

Madison, Wisconsin

CITY OF MADISON

CITY ENGINEERING DIVISION

DEPARTMENT OF PUBLIC WORKS

PLAN OF PROPOSED IMPROVEMENT

PUBLIC IMPROVEMENT PROJECT APPROVED

FEBRUARY 3, 2015

BY THE COMMON COUNCIL
OF MADISON, WISCONSIN

PUBLIC IMPROVEMENT DESIGN
APPROVED BY:

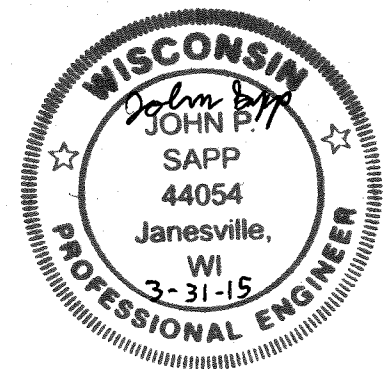
[Signature] 4/22/15
City Engineer Date

INDEX OF SHEETS

SHEET NO.	TITLE
1	STANDARD NOTES
D1	PAVING PLAN DETAILS
D2-D4	PAVING PLAN
P1	SITE GRADING PLAN
P2	FITCH COURT PLAN
P3	STREETSCAPE AND PLANTING PLAN
P4	UTILITY PLAN
U1	ELECTRICAL PLAN
E1	

723 STATE STREET - ST. PAUL'S REDEVELOPMENT
CITY PROJECT NO. 10523
CONTRACT NO. 2302

STREET PLAN
DESIGNED BY:



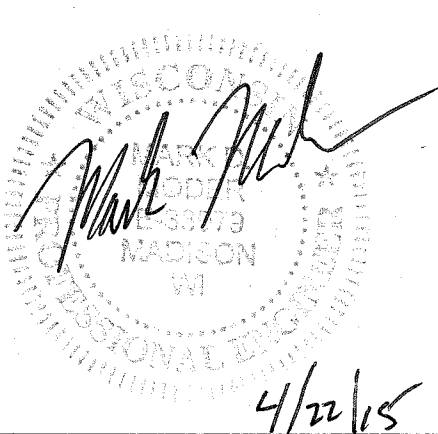
STORM SEWER
DESIGNED BY:



ELECTRICAL
DESIGNED BY:



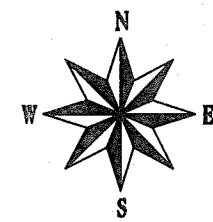
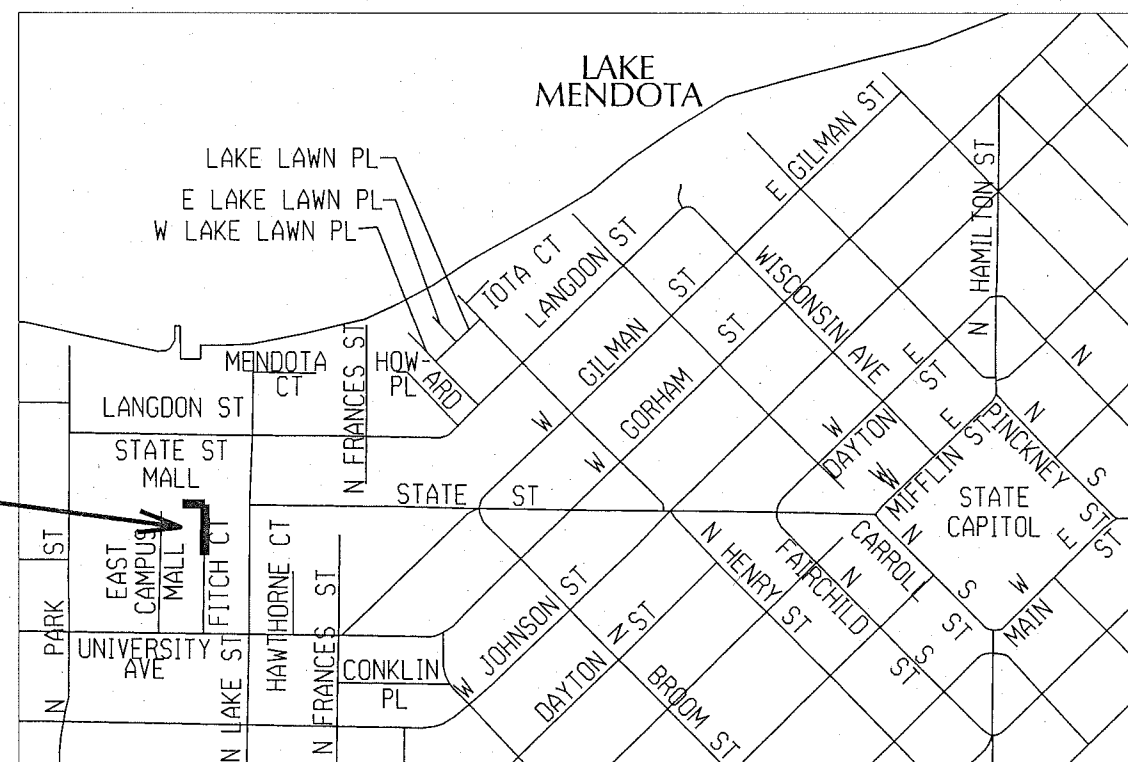
SANITARY SEWER
DESIGNED BY:



CONVENTIONAL SIGNS

FIELD VERIFY ALL UTILITY LOCATIONS

GAS	— G —
STORM SEWER	— ST —
SANITARY SEWER	— SAN —
WATER	— W —
OVERHEAD ELECTRIC	— OH —
POWER POLE	⊞
ADA COMPLIANT RAMP W/ DETECTABLE WARNING FIELD	▣
COMBUSTIBLE FLUIDS	☠



PROJECT
LOCATION

CONTRACTOR/DEVELOPER SHALL SUBMIT A TRAFFIC CONTROL PLAN TO CITY TRAFFIC ENGINEERING AT LEAST 10 WORKING DAYS PRIOR TO THE START OF WORK. WORK WITHIN THE RIGHT-OF-WAY SHALL NOT BEGIN UNTIL THE TRAFFIC CONTROL PLAN IS APPROVED.

ANY PAVEMENT MARKINGS THAT ARE REMOVED OR DAMAGED SHALL BE REPLACED BY THE DEVELOPER/CONTRACTOR AS DIRECTED BY CITY TRAFFIC ENGINEERING.

THE LOCATION AND INFORMATION FOR PROPOSED NEW TREES, IN THE PUBLIC RIGHT OF WAY OR ON PUBLIC LANDS ARE APPROXIMATE AND ARE SHOWN FOR REFERENCE ONLY.

NO TREES IN THE RIGHT OF WAY OR ON PUBLIC LANDS SHALL BE TRIMMED, PRUNED, REMOVED OR ADVERSELY AFFECTED IN ANY WAY UNTIL THE DEVELOPER HAS RECEIVED WRITTEN PERMISSION FROM THE CITY ENGINEER OR CITY FORESTER. SAID WRITTEN PERMISSION SHALL INCLUDE LANGUAGE INDICATING THAT SECTION 10.101 OF THE MADISON GENERAL ORDINANCES AND ADMINISTRATIVE PROCEDURE MEMORANDUM NO. 6-2, REFERING TO NOTIFICATION OF PROPERTY OCCUPANTS AND/OR OWNERS, HAS BEEN COMPLIED WITH.

STREET TREES SHALL BE PROTECTED. CONTRACTORS SHALL INSTALL TREE PROTECTION FENCING THAT COMPLETELY SURROUNDS THE TREE GRATES. CONTACT DEAN KAHL (266-4891 OR 266-4816) TO COORDINATE ANY WORK AROUND TREES.

THE DEVELOPER SHALL COORDINATE THE REMOVAL OF THE EXISTING LIGHT POLES ADJACENT TO THE DEVELOPMENT WITH CITY OF MADISON TRAFFIC ENGINEERING (CONTACT BRIAN SMITH AT 608-261-9625). UPON COMPLETION OF THE PROJECT, THE CONTRACTOR SHALL CONTACT CITY TRAFFIC ENGINEERING TO REINSTALL THE POLES. ANY DAMAGE TO THE POLES CAUSED BY THE CONTRACTOR SHALL BE AT THE CONTRACTOR'S EXPENSE.

THE DEVELOPER OR THEIR CONTRACTOR SHALL PROVIDE PROTECTION OF THE EXPOSED LIGHT POLE BASES AND EXPOSED WIRING FOR THE DURATION OF THE PROJECT, FROM THE DAY THE POLES ARE REMOVED BY CITY CREWS UNTIL THE DAY THE POLES ARE REINSTALLED. ANY DAMAGE TO THE LIGHT POLE BASES AND WIRING DURING THE PROJECT SHALL BE BILLED TO THE CONTRACTOR.

THE EXISTING CONDUIT AND HAND HOLE FOR THE B-STATION AT THE CORNER OF FITCH COURT AND STATE STREET SHALL BE PROTECTED AND IS TO REMAIN DURING CONSTRUCTION. IF THE CONDUIT OR HAND HOLE ARE DAMAGED THE CONTRACTOR SHALL REPLACE AT THEIR EXPENSE.

THE DEVELOPER SHALL SALVAGE OR MAKE ARRANGEMENTS TO SALVAGE THE AMENITIES ON STATE STREET AND FITCH COURT INCLUDING BIKE RACKS, KIOSKS, TRASH RECEPTACLES AND BENCHES. COORDINATE THE REMOVAL WITH LISA LASCHINGER WITH THE STATE STREET MALL MAINTENANCE AT 608-266-6031 A MINIMUM OF 48 HRS IN ADVANCE.

THE DEVELOPER AND THEIR CONTRACTOR SHALL COORDINATE ALL CONSTRUCTION WITH WARREN HANSEN, THE CITY OF MADISON'S STREET VENDING COORDINATOR, A MINIMUM OF 2 WEEKS IN ADVANCE OF CLOSING OFF STATE STREET MALL OR REMOVING ANY OF THE EXISTING POLES ON STATE STREET. WARREN CAN BE CONTACTED AT 608-261-9171 OR WHANSEN@CITYOFMADISON.COM.

ALL GUTTERS SHALL DRAIN WITH A MINIMUM GRADES OF 0.5% TOWARD STORM SEWER INLETS.

THE CROSS SLOPE OF SIDEWALKS AND BARRIER FREE SIDEWALK CURB RAMPS SHALL BE 1.5%. THE LONGITUDINAL GRADE OF BARRIER FREE SIDEWALK CURB RAMPS SHALL NOT EXCEED 8.33%. ALL SIDEWALK RAMPS SHALL BE CONSTRUCTED ACCORDING TO S.D.D. 3.03. AT ALL OTHER LOCATIONS THE LONGITUDINAL GRADE OF SIDEWALKS SHALL NOT EXCEED 5.0 % OR THE ADJACENT STREET GRADE WHICHEVER IS GREATER NOR BE LESS THAN 0.4% AND SHALL DRAIN TOWARD STORM SEWER INLETS. SIDE SLOPES WITHIN TEN FEET OF A PUBLIC SIDEWALK SHALL NOT EXCEED 4.00:1. ALL SIDEWALK AND SIDEWALK RAMP ELEVATIONS AND GRADES SHALL BE FIELD VERIFIED AND SET TO COMPLY WITH THE CITY OF MADISON STANDARD SPECIFICATIONS AND THE A.D.A. GUIDELINES.

OBTAIN A PRINT OUT OF THE ALIGNMENT FROM THE CITY ENGINEER PRIOR TO STAKING THIS PROJECT.

CURB STATION AND OFFSETS SHALL BE TO THE FACE OF CURB UNLESS OTHERWISE INDICATED. CURB ELEVATIONS SHALL BE TO THE TOP OF CURB (OR EXTENDED TOP OF CURB FOR DRIVEWAYS OR RAMPS) UNLESS OTHERWISE INDICATED.

POWER POLES AND OTHER OBSTRUCTIONS SHALL BE MOVED TO PROVIDE 2 FEET MINIMUM OF CLEAR DISTANCE FROM ANY FACE OF CURB OR EDGE OF SIDEWALK.

ANY INFORMATION SHOWN ON THIS PLAN, WHICH IS NOT PART OF THIS PROJECT, IS PRELIMINARY AND NOT FOR CONSTRUCTION.

THERE MAY BE EXISTING UTILITIES OR OTHER FEATURES WHICH ARE EITHER NOT SHOWN OR SHOWN INCORRECTLY ON THIS PLAN. IT IS THE RESPONSIBILITY OF THE DEVELOPER TO LOCATE AND IDENTIFY ALL UTILITIES AND TOPOGRAPHY WHICH MAY AFFECT THE CONSTRUCTION OF THESE IMPROVEMENTS.

ALL PERMANENT SIGNING AND POSTING WILL BE DETERMINED AND PROVIDED BY THE TRAFFIC ENGINEERING DIVISION, FOLLOWING CONSTRUCTION OF THESE IMPROVEMENTS.

THE DEVELOPER SHALL PROVIDE, INSTALL AND MAINTAIN ALL STREET END BARRICADES, SIGNING AND TRAFFIC CONTROL, AS REQUIRED BY THE CITY TRAFFIC ENGINEER.

PAVEMENT SAWCUTS SHALL BE AS DIRECTED BY THE CITY CONSTRUCTION ENGINEER. SAWCUTS SHOWN ON THE PLAN ARE APPROXIMATE.

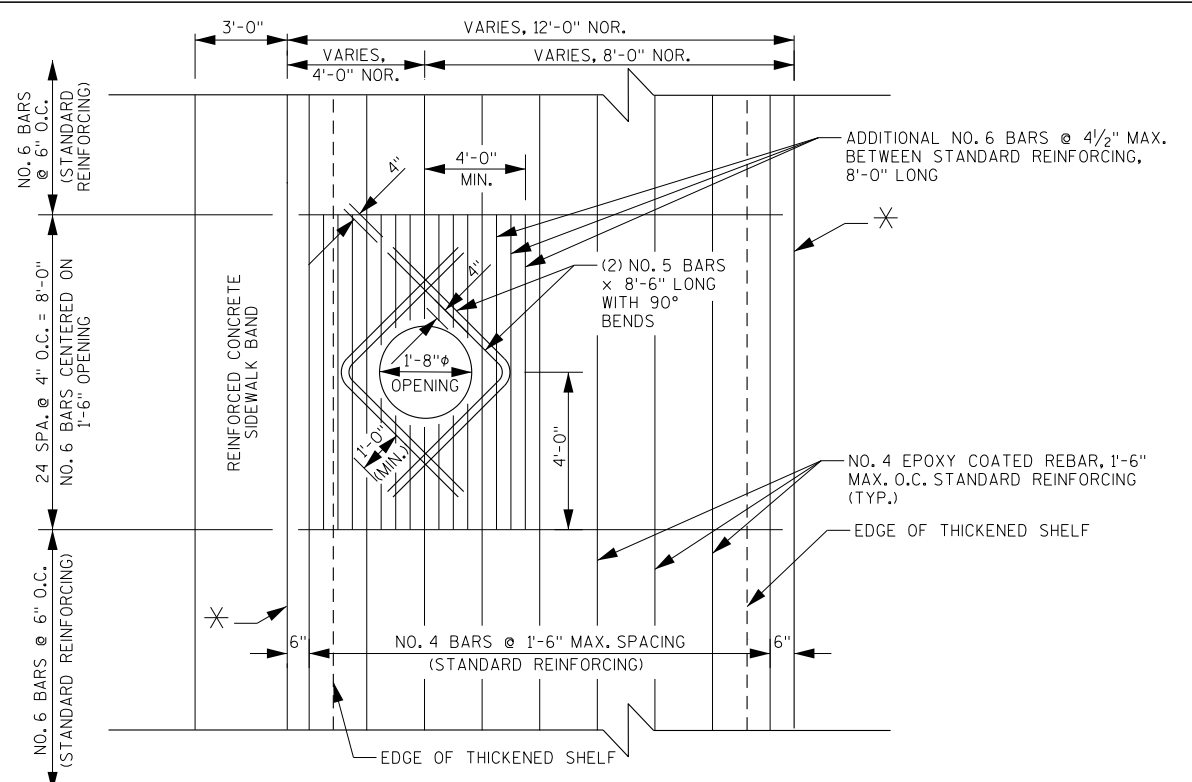
DAMAGE TO ANY EXISTING CURB, PAVEMENT, SIDEWALK, ETC. THAT IS TO REMAIN SHALL BE REPAIRED BY THE DEVELOPER/CONTRACTOR AS DIRECTED BY THE ENGINEER.

PLOT SCALE:

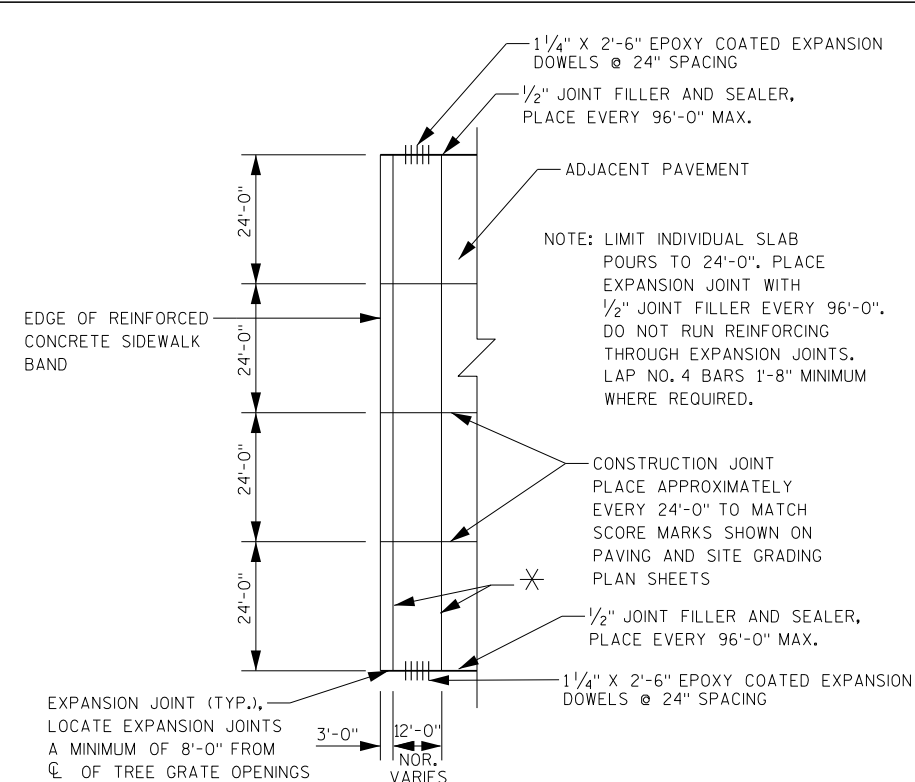
PLOT NAME:

REV. DATE:

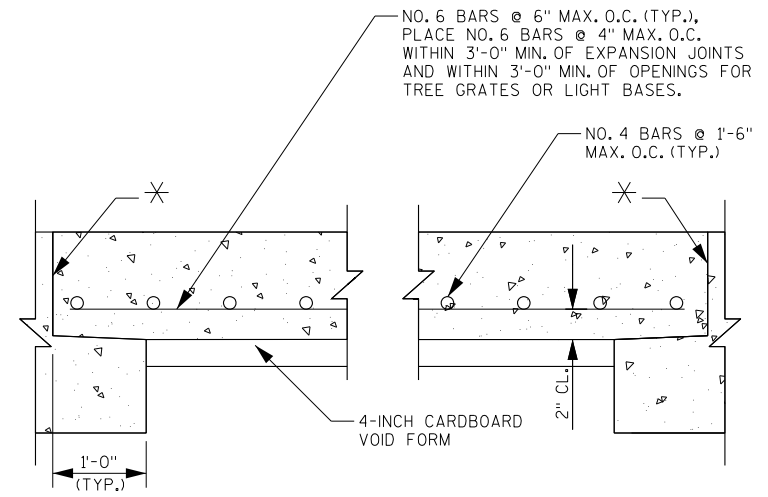
ORIGINATOR: CITY OF MADISON, STREETS DIVISION



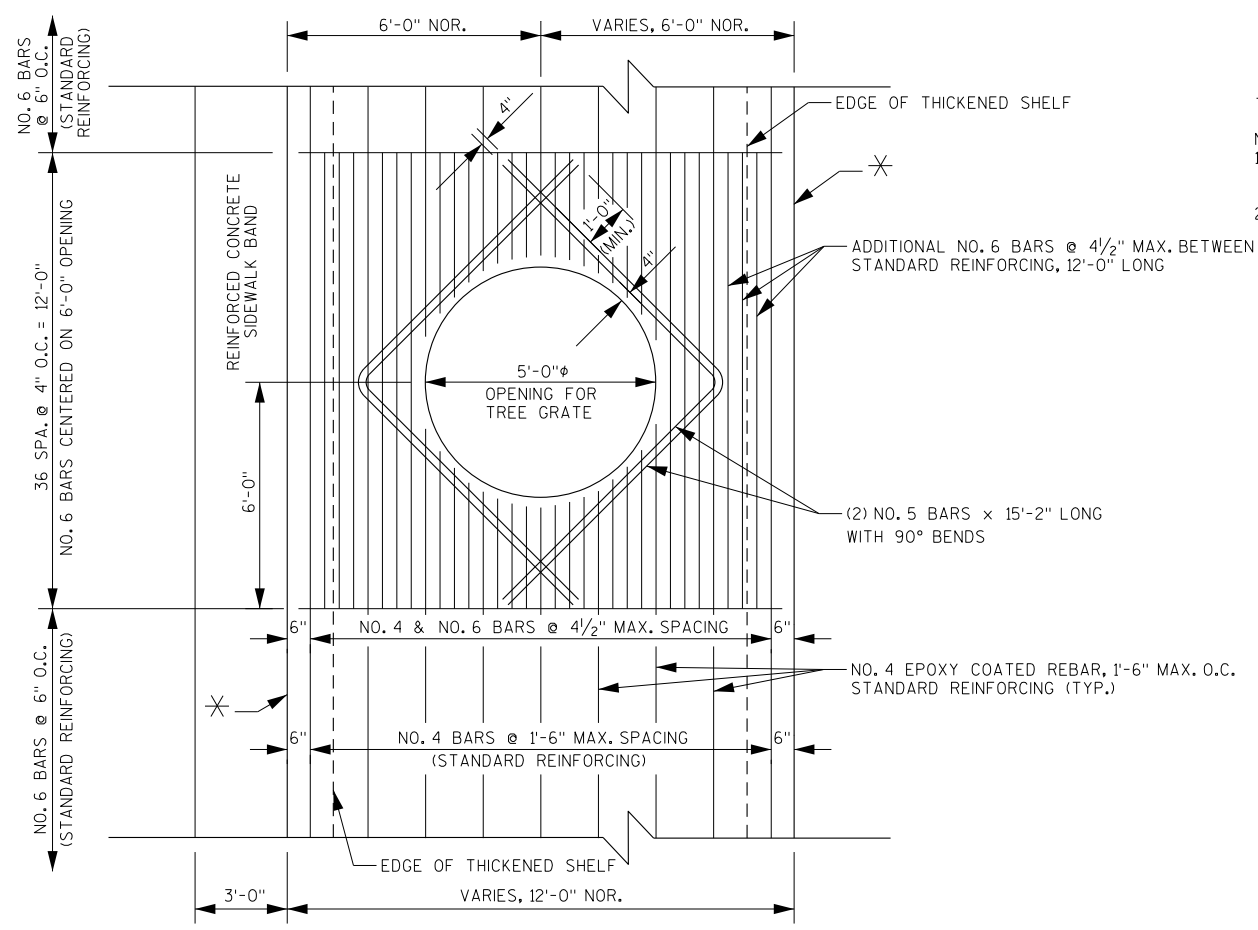
REINFORCEMENT PLAN - PEDESTRIAN LIGHT BASE OPENINGS



JOINT PLAN

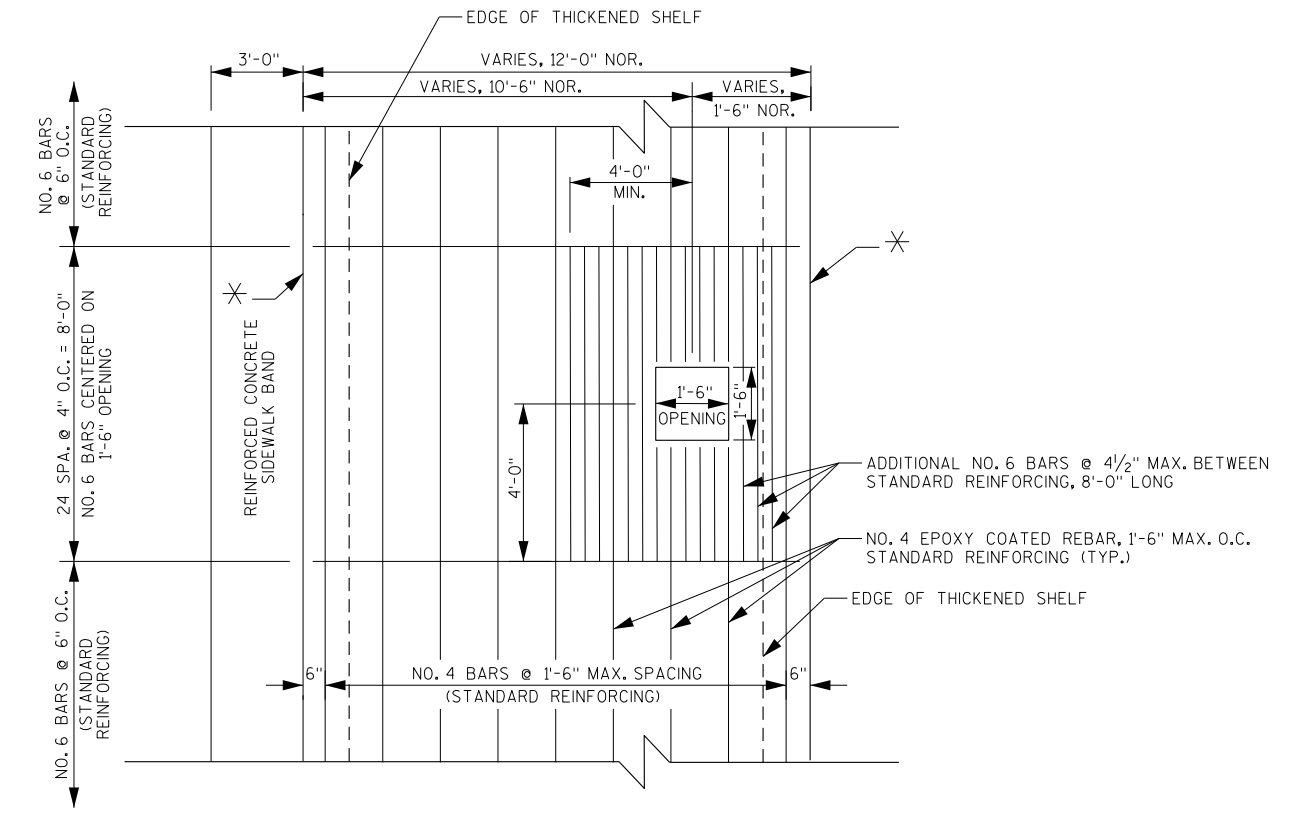


TYPICAL SECTION THRU CONCRETE STRUCTURAL SLAB 8-INCH
SEE PAVING PLANS FOR LOCATIONS OF COLORED AND NON COLORED STRUCTURAL SLABS



REINFORCEMENT PLAN - TREE OPENINGS

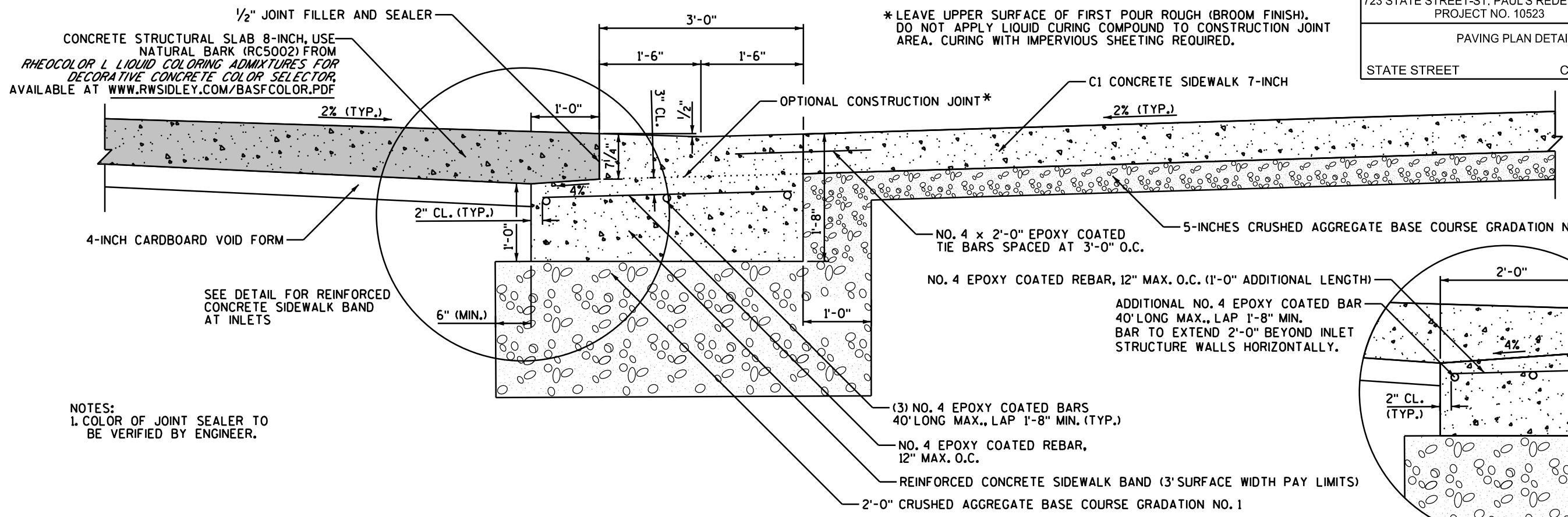
- ✱ 1/2" JOINT FILLER AND SEALER.
- NOTES:
1. COLOR OF JOINT SEALER TO BE DETERMINED BY ENGINEER.
2. CUT REINFORCEMENT AT OPENING AND HOLD 2" CLEAR. COAT ENDS OF REINFORCEMENT WITH EPOXY IN ACCORDANCE WITH SUBSECTION 505.2.4.2 OF THE LATEST EDITION OF THE STANDARD SPECIFICATIONS FOR HIGHWAY AND STRUCTURE CONSTRUCTION OF THE STATE OF WISCONSIN, DEPARTMENT OF TRANSPORTATION.



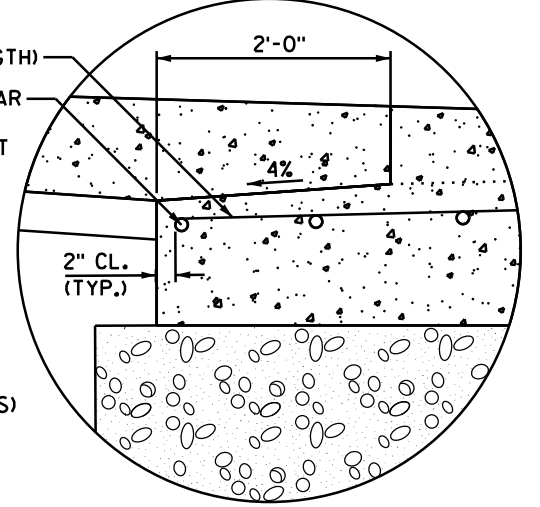
REINFORCEMENT PLAN - AREA LIGHT BASE OPENINGS

CONCRETE STRUCTURAL SLAB 8-INCH
SCALE: NONE

PLOT SCALE: PLOT NAME: REV. DATE: ORIGINATOR: CITY OF MADISON, STREETS DIVISION

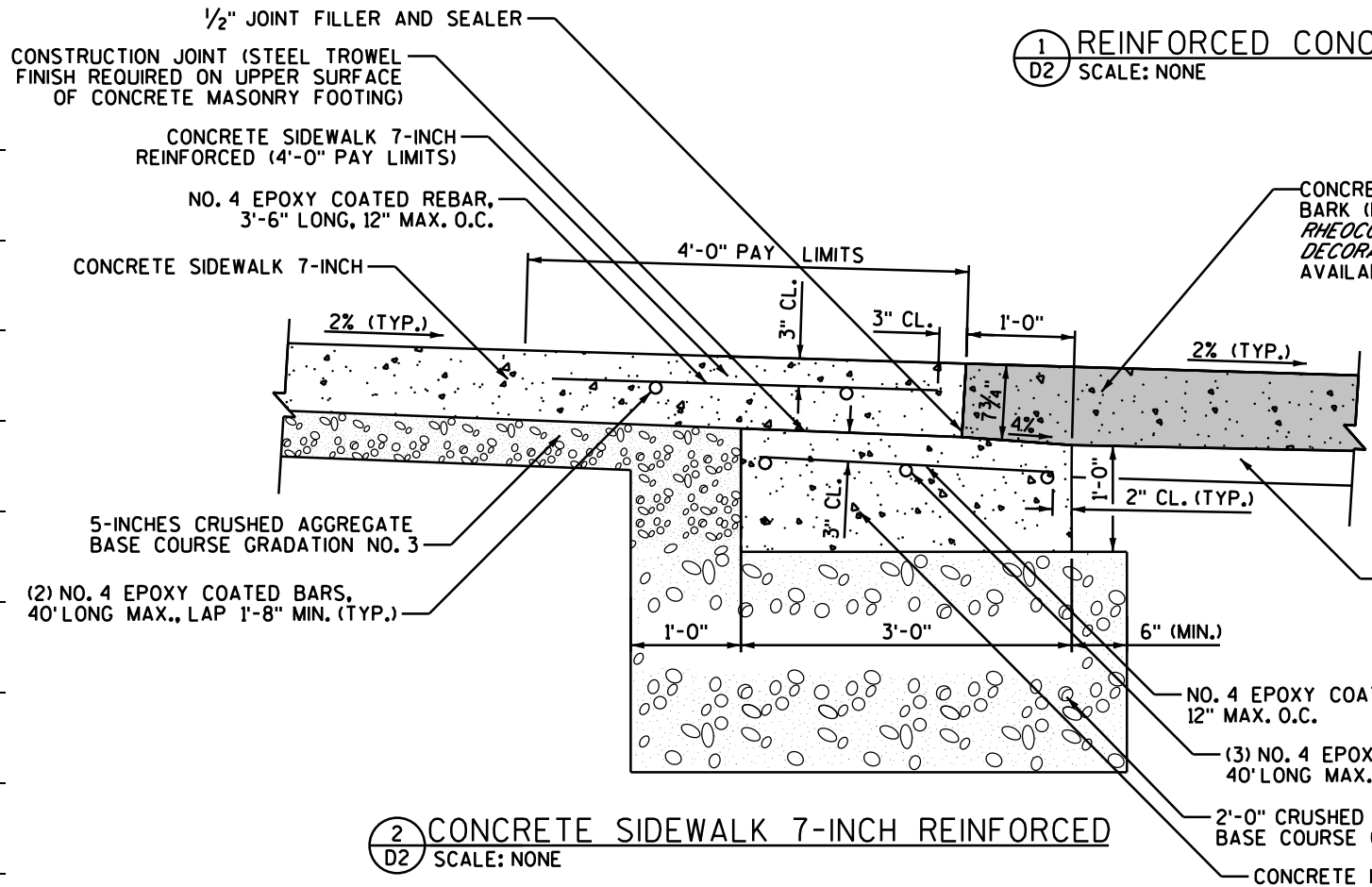


NOTES:
 1. COLOR OF JOINT SEALER TO BE VERIFIED BY ENGINEER.

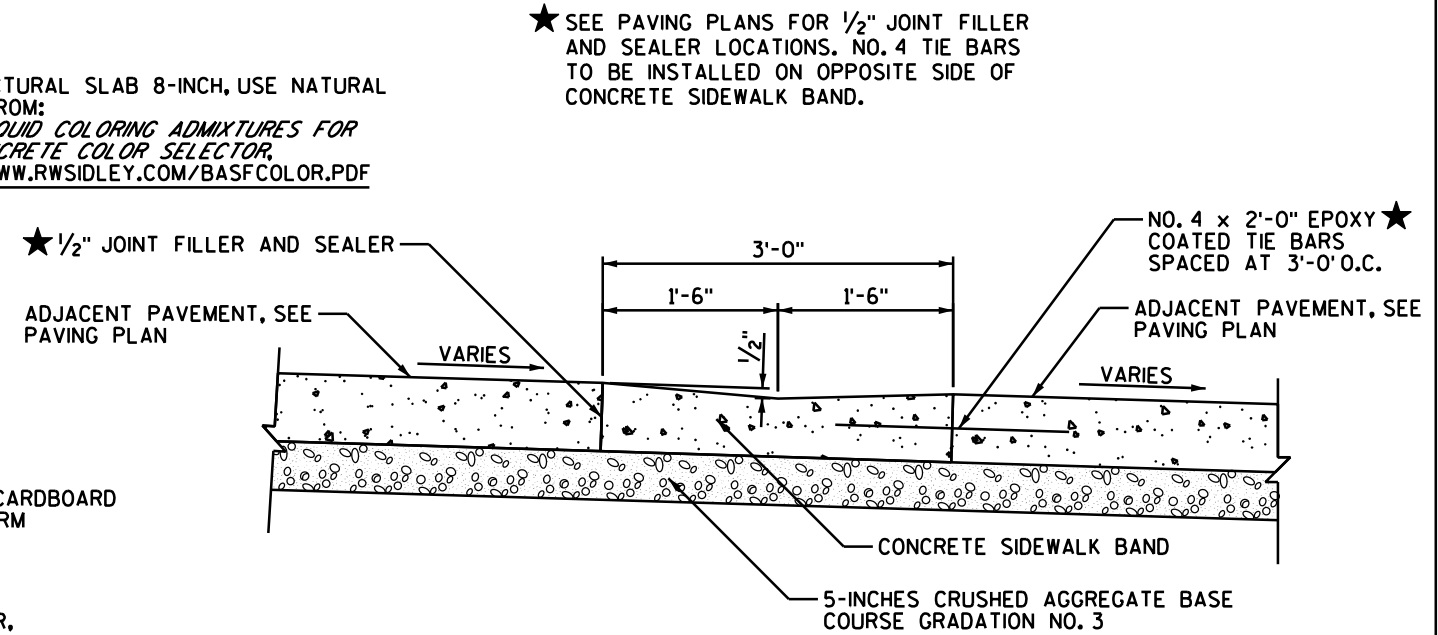


REINFORCED CONCRETE SIDEWALK BAND AT INLETS

1 REINFORCED CONCRETE SIDEWALK BAND
 D2 SCALE: NONE

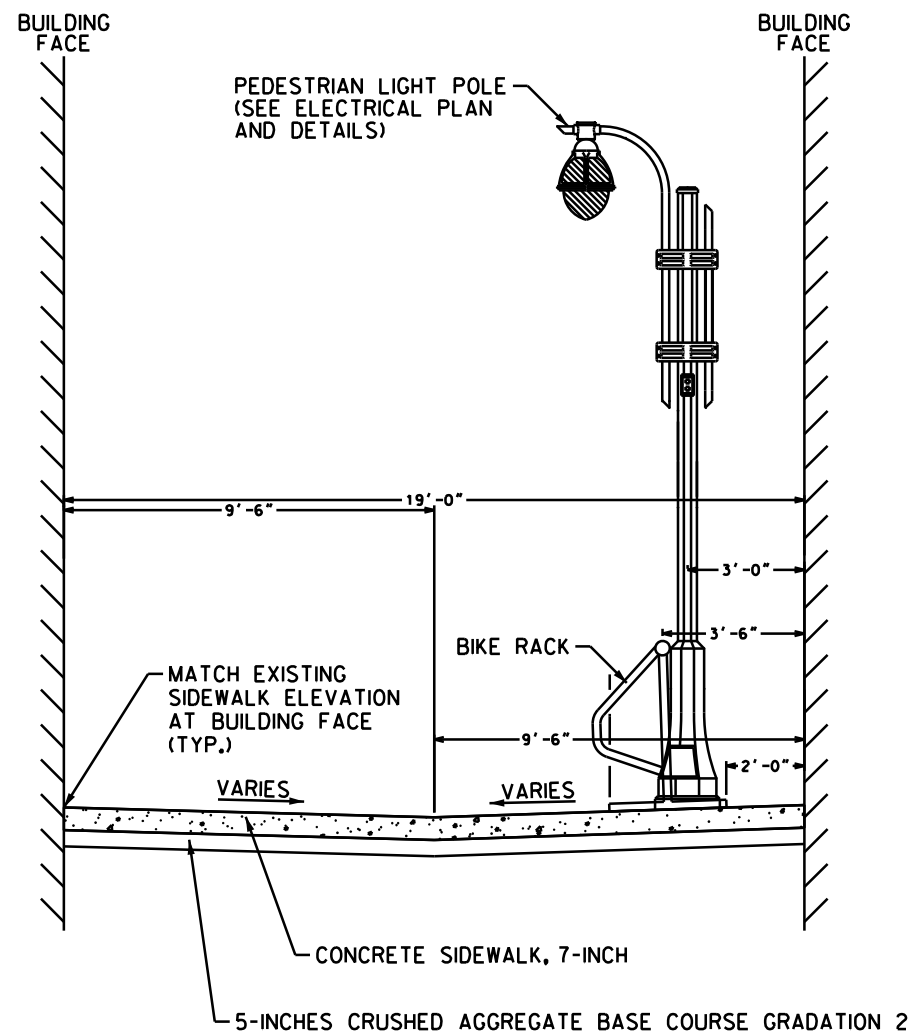


2 CONCRETE SIDEWALK 7-INCH REINFORCED
 D2 SCALE: NONE

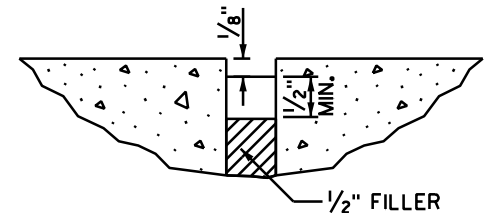


3 CONCRETE SIDEWALK BAND
 D3 SCALE: NONE

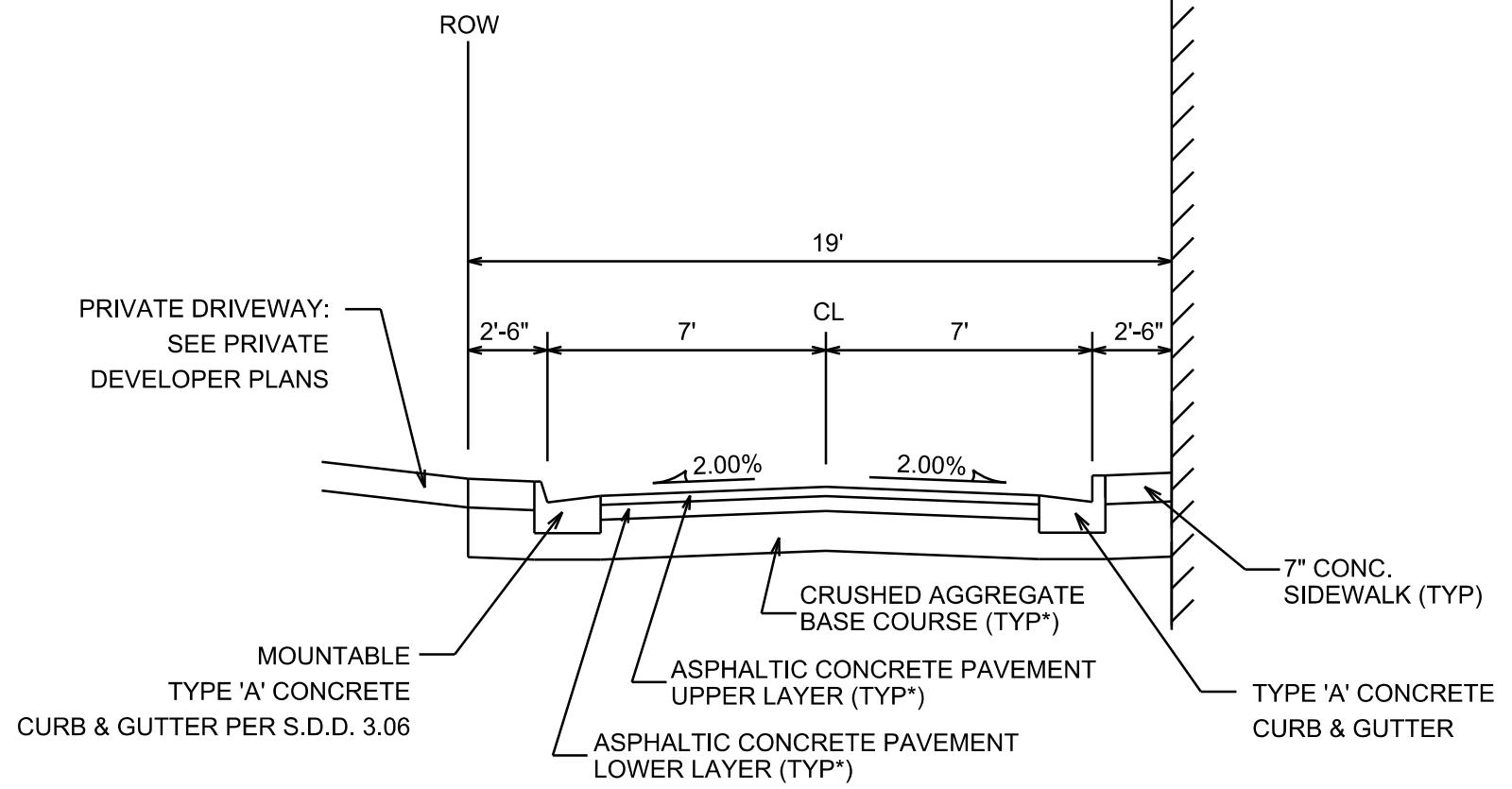
PLOT SCALE: _____
 PLOT NAME: _____
 REV. DATE: _____
 ORIGINATOR: CITY OF MADISON, STREETS DIVISION



1 FINISHED TYPICAL SECTION - FITCH COURT SIDEWALK
 D4 SCALE: NONE (LOOKING NORTH)



NOTE: SEAL ALL EXPOSED SURFACES OF 1/2" JOINT FILLER (1/2" MIN. DEEP AND HOLD 1/8" BELOW SURFACE OF CONCRETE). COLOR OF JOINT SEALER TO BE VERIFIED BY ENGINEER.
 3 1/2-INCH JOINT FILLER AND SEALER
 D4 SCALE: NONE



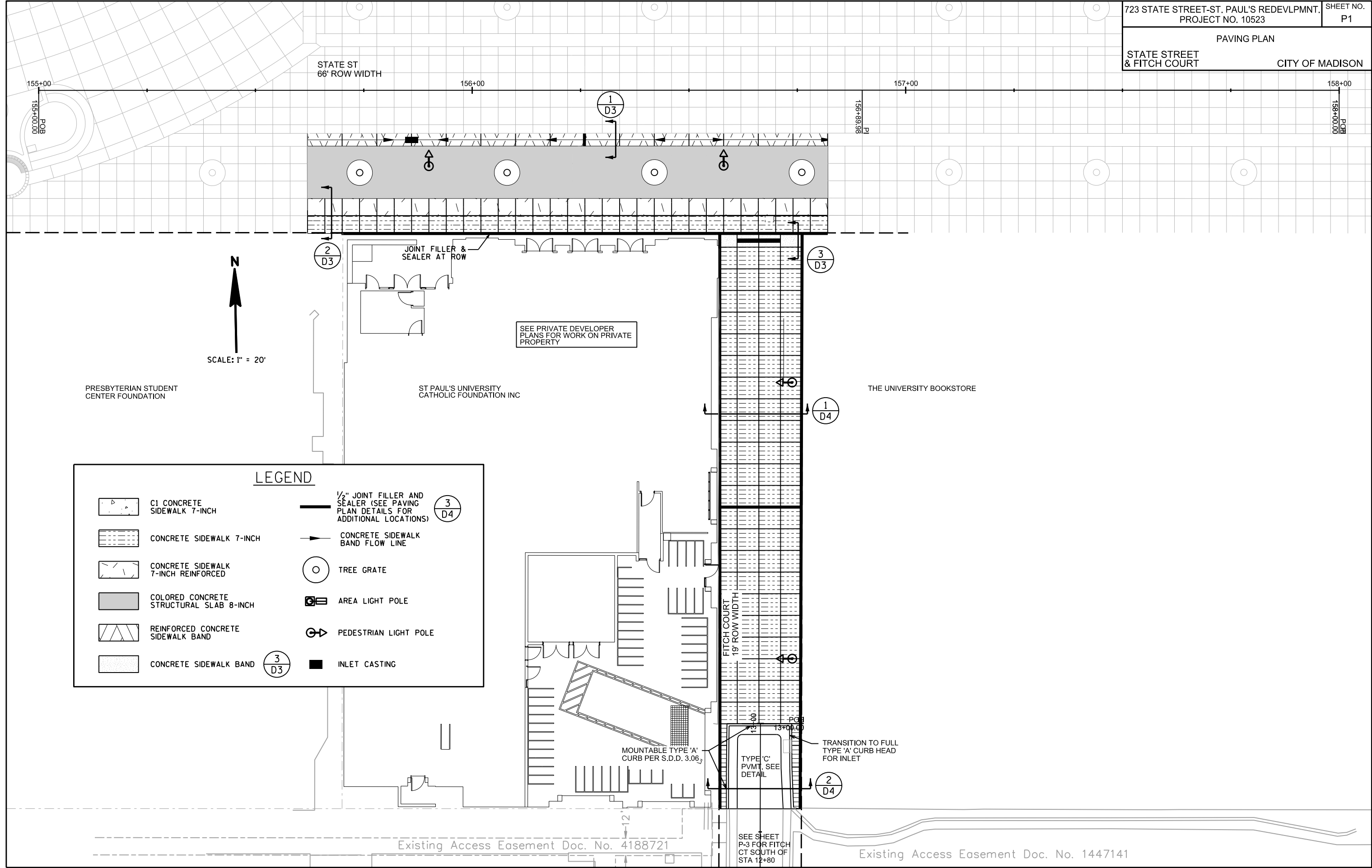
NOTE:
 * FITCH COURT TO BE CONSTRUCTED AS TYPE 'C' PAVEMENT PER CITY OF MADISON MINIMUM PAVEMENT DESIGN

CITY OF MADISON MINIMUM PAVEMENT DESIGN

TYPE	CRUSHED AGG. BASE COURSE		ASPHALTIC CONCRETE PAVEMENT			
	LOWER LAYER GRADATION 1	UPPER LAYER GRADATION 2	TYPE	THICKNESS	TYPE	THICKNESS
A	6"	4"	E-0.3	1.75"	E-0.3	1.75"
B	6"	4"	E-1	2.25"	E-1	2"
C	6"	4"	E-3	3.25"	E-3	2"

2 FINISHED TYPICAL SECTION - FITCH COURT PAVEMENT
 D4 SCALE: NONE

PLOT SCALE: _____ PLOT NAME: _____ REV. DATE: _____ ORIGINATOR: CITY OF MADISON, STREETS DIVISION



LEGEND

	C1 CONCRETE SIDEWALK 7-INCH		1/2" JOINT FILLER AND SEALER (SEE PAVING PLAN DETAILS FOR ADDITIONAL LOCATIONS)	
	CONCRETE SIDEWALK 7-INCH		CONCRETE SIDEWALK BAND FLOW LINE	
	CONCRETE SIDEWALK 7-INCH REINFORCED		TREE GRATE	
	COLORED CONCRETE STRUCTURAL SLAB 8-INCH		AREA LIGHT POLE	
	REINFORCED CONCRETE SIDEWALK BAND		PEDESTRIAN LIGHT POLE	
	CONCRETE SIDEWALK BAND		INLET CASTING	

PLOT SCALE:
 PLOT NAME:
 REV. DATE:
 ORIGINATOR: CITY OF MADISON, STREETS DIVISION

N
SCALE: 1" = 20'

SEE PRIVATE DEVELOPER PLANS FOR WORK ON PRIVATE PROPERTY

MOUNTABLE TYPE 'A' CURB PER S.D.D. 3.06

TYPE 'C' PVMT, SEE DETAIL

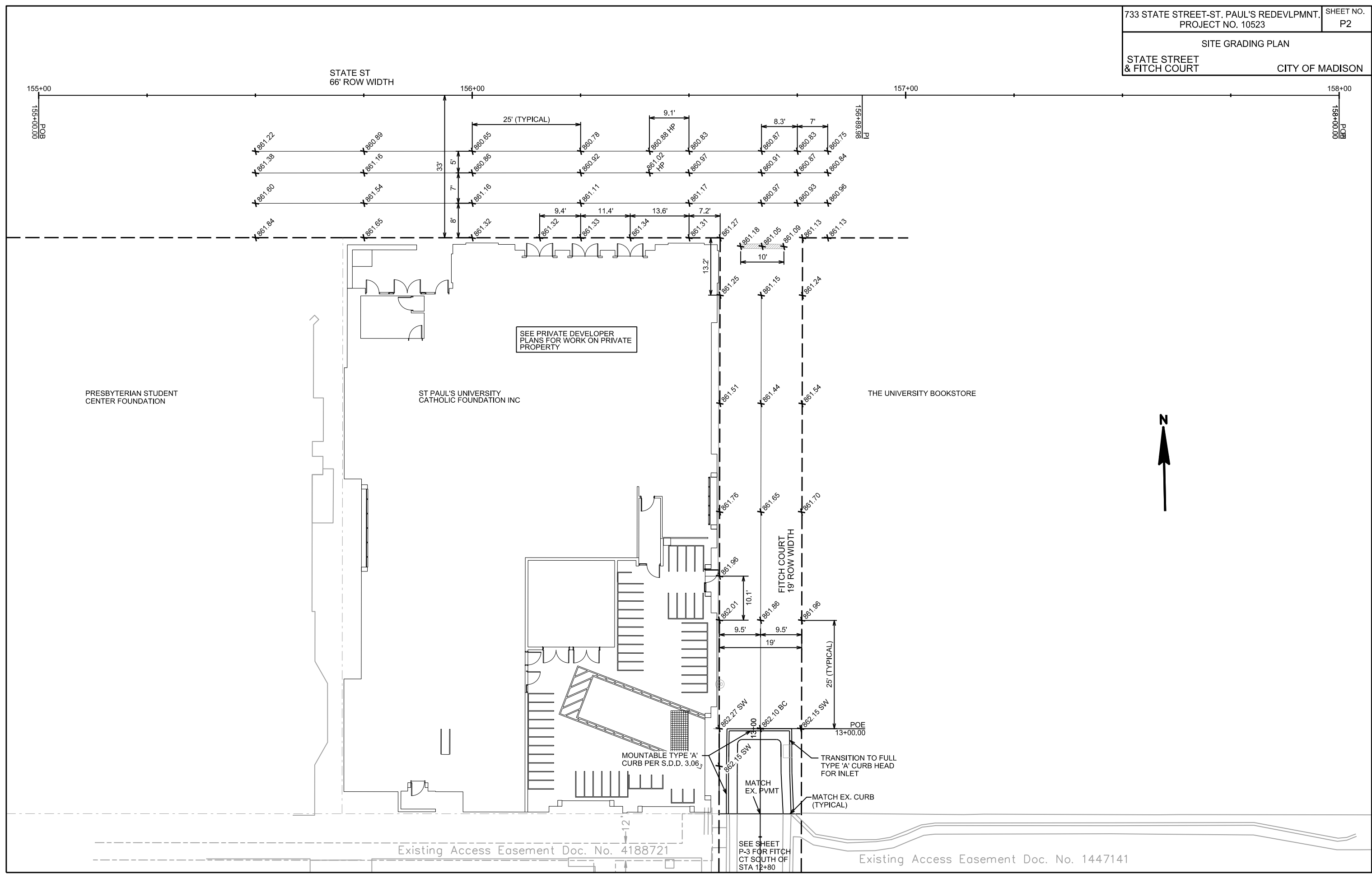
TRANSITION TO FULL TYPE 'A' CURB HEAD FOR INLET

Existing Access Easement Doc. No. 4188721

Existing Access Easement Doc. No. 1447141

SEE SHEET P-3 FOR FITCH CT SOUTH OF STA 12+80

PLOT SCALE: PLOTTING: R/W REV. DATE: ORIGINATOR: CITY OF MADISON, STREETS DIVISION



CHAZEN MUSEUM OF ART

PRESBYTERIAN STUDENT CENTER FOUNDATION

REV. 2018 10-04 JPS
COORDINATED WORK WITH UW SCHOOL OF MUSIC AND UW EXTENSION PROJECTS TO DETERMINE CURB LIMITS AND CURB OPENINGS. REVISED SCOPE OF WORK TO COMPLETELY RECONSTRUCT FITCH COURT

723 STATE STREET-ST. PAUL'S REDEVELOPMENT PROJECT NO. 10523 SHEET NO. P3

FITCH COURT PLAN

FITCH COURT CITY OF MADISON

ST PAUL'S UNIVERSITY CATHOLIC FOUNDATION INC.

MINIMUM SLOPE ON FLOWLINE OF CURB SHALL BE 0.50% FROM STA 11+93.62 TO STA 12+80.34

MOUNTABLE TYPE 'A' CURB

MODIFIED MOUNTABLE TYPE 'A' CURB

STA 11+93.62, LT 7.30'
TC/MATCH EX. CURB MOUNTABLE TY 'A'

12+00 FITCH CT.

RECONSTRUCT FITCH COURT AS TYPE 'C' PAVEMENT. MATCH EXISTING CURB TYPE.

STA 12+80.33, LT 7.30'
TC/BEGIN MODIFIED MOUNTABLE CURB

MATCH EX. CURB

STA 11+93.62, RT 7.24'
TC/MATCH EX. CURB

STA 12+05.86, RT 7.24'
TC/

STA 12+08.45, RT 8.06'
TC/

STA 12+30.29, RT 8.08'
TC/

STA 12+32.78, RT 7.26'
TC/

STA 12+44.05, RT 7.25'
TC/END CURB RADIUS/
BEGIN DWAY CURB

STA 12+80.34, RT 7.27'
TC/MATCH EX. CURB

13+00

PROJECT NO. 10753. WORK BY OTHERS

PROJECT NO. 11523

STA 12+35.49, RT 7.26'
TC/PC

STA 12+42.98, RT 9.44'
TC/PT

STA 12+74.36, RT 16.23'
TC/MATCH EX. CURB

POB
STOKW. INLET #10.2
RIM: 862.03
IE: 857.65
IE N: 853.51
IE W: 853.52

THE UNIVERSITY BOOKSTORE

UW EXTENSION BUILDING

Existing Access Easement
Doc. No. 144/141

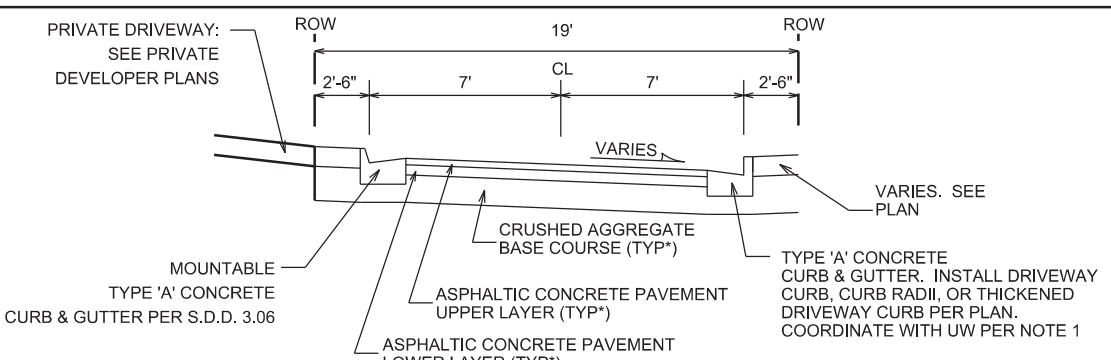
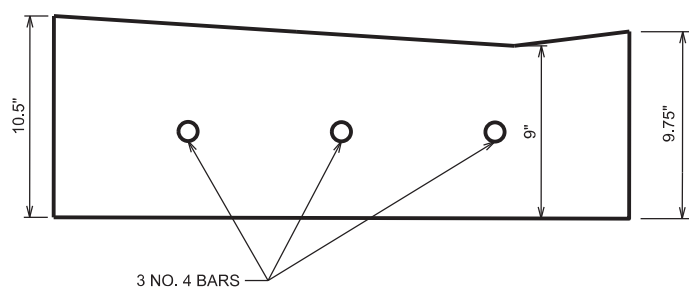
PLOT SCALE:

PLOT NAME:

REV. DATE:

ORIGINATOR: CITY OF MADISON, STREETS DIVISION

- NOTES:
- COORDINATE LAYOUT OF CURB RETURNS WITH THE UW EXTENSION BUILDING PARKING STALL PROJECT. CONTACT JONATHAN BRONK FROM UW CAMPUS PLANNING & LANDSCAPE ARCHITECTURE OFFICE AT 608-263-0977
 - FROM STA 12+35.49 TO STA 12+42.98, REJECT CURB FROM FACE TO FLOWLINE
 - FROM STA 12+35.49 TO STA 12+80.34, INSTALL 9" THICK CURB PER DETAIL:



NOTE:
FITCH COURT TO BE CONSTRUCTED AS TYPE 'C' PAVEMENT PER CITY OF MADISON MINIMUM PAVEMENT DESIGN *

* CITY OF MADISON MINIMUM PAVEMENT DESIGN

TYPE	CRUSHED AGGREGATE BASE COURSE		ASPHALTIC CONCRETE PAVEMENT		UPPER LAYER	
	LOWER LAYER GRADATION 1	UPPER LAYER GRADATION 2	TYPE	THICKNESS	TYPE	THICKNESS
A	6"	6"	4 LT 58-28 S	1.75"	4 LT 58-28 S	1.75"
B	6"	6"	3 LT 58-28 S	2.50"	4 LT 58-28 S	2.00"
C	6"	6"	3 MT 58-28 S/H	3.50"	4 MT 58-28 S/H	2.00"

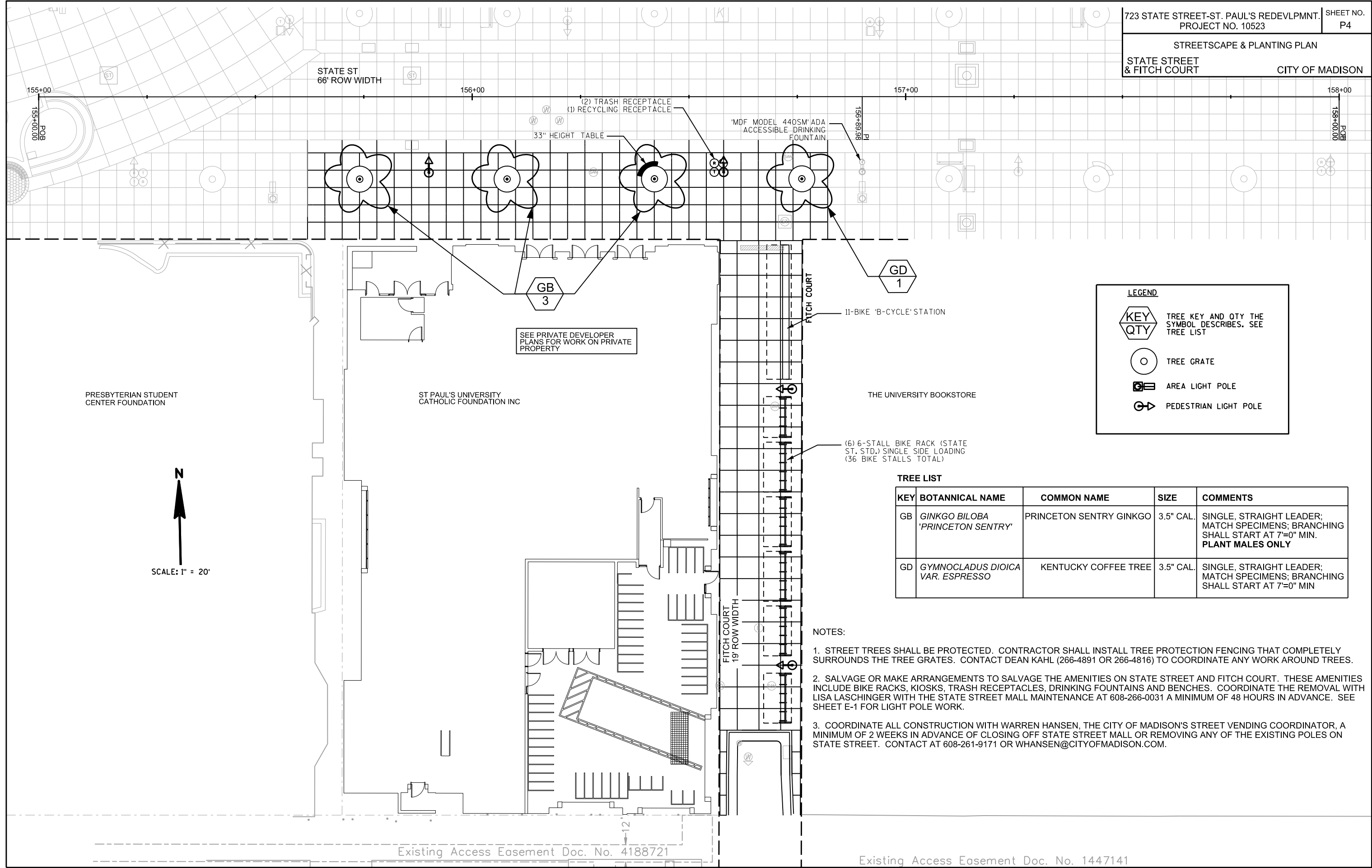
SCALE: 1"=10'



THE COORDINATES OF THIS CITY OF MADISON (COM) DESIGN FILE ARE OFFSET FROM THE UW MUSIC BUILDING AND UW EXTENSION BUILDING SITE PLAN CAD DATA. CONFIRM ALL CURB LAYOUT IN THE FIELD WITH UW PER NOTE 1

NORTHING (COM) = NORTHING (UW) + 1.05
EASTING (COM) = EASTING (UW) + 1.78

STREETSCAPE & PLANTING PLAN
STATE STREET & FITCH COURT CITY OF MADISON



LEGEND

KEY
QTY

○ TREE GRATE

□ AREA LIGHT POLE

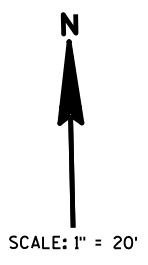
⊕ PEDESTRIAN LIGHT POLE

○ TREE KEY AND QTY THE SYMBOL DESCRIBES. SEE TREE LIST

TREE LIST

KEY	BOTANNICAL NAME	COMMON NAME	SIZE	COMMENTS
GB	<i>GINKGO BILOBA</i> <i>'PRINCETON SENTRY'</i>	PRINCETON SENTRY GINKGO	3.5" CAL.	SINGLE, STRAIGHT LEADER; MATCH SPECIMENS; BRANCHING SHALL START AT 7'=0" MIN. PLANT MALES ONLY
GD	<i>GYMNOCLADUS DIOICA</i> <i>VAR. ESPRESSO</i>	KENTUCKY COFFEE TREE	3.5" CAL.	SINGLE, STRAIGHT LEADER; MATCH SPECIMENS; BRANCHING SHALL START AT 7'=0" MIN

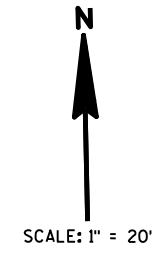
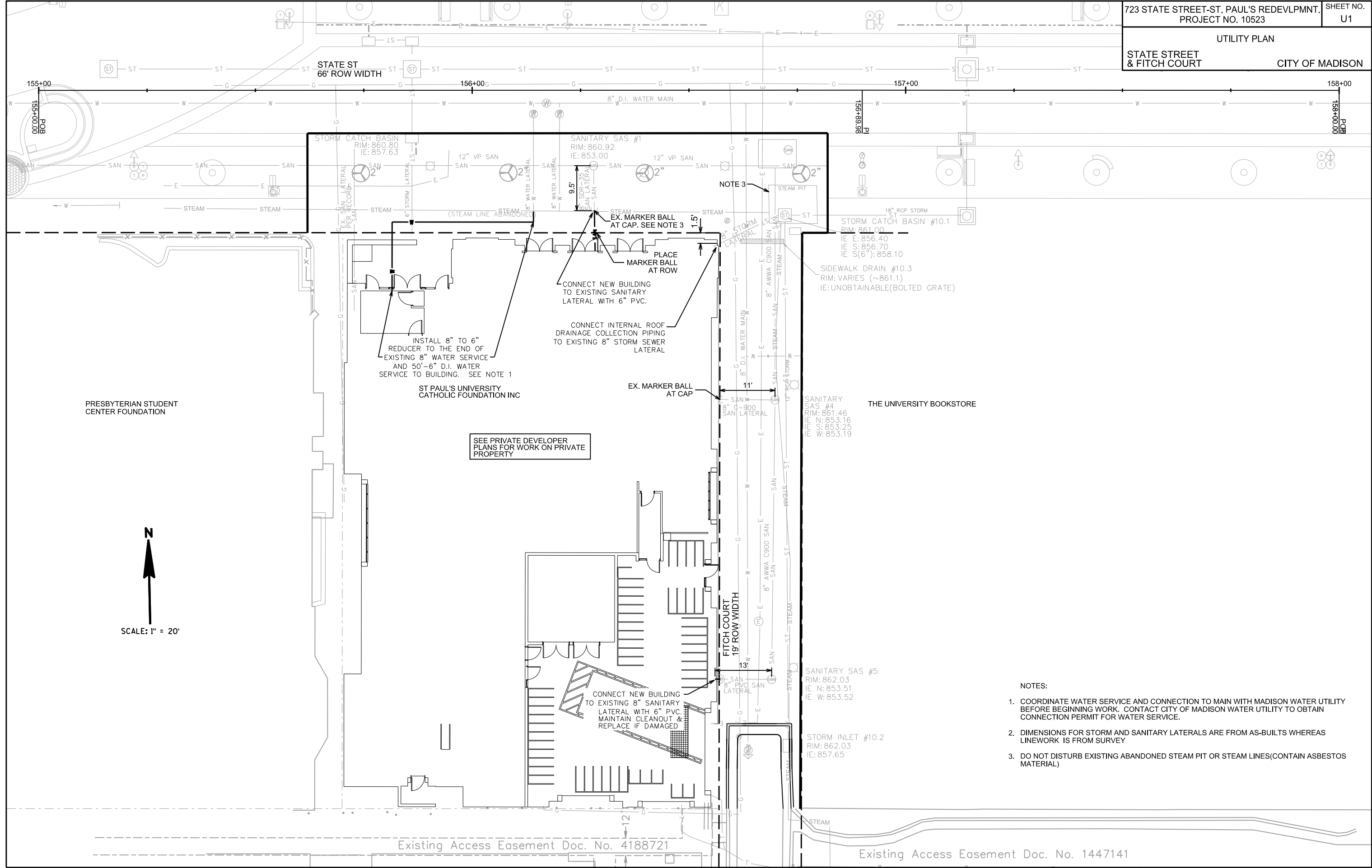
- NOTES:**
- STREET TREES SHALL BE PROTECTED. CONTRACTOR SHALL INSTALL TREE PROTECTION FENCING THAT COMPLETELY SURROUNDS THE TREE GRATES. CONTACT DEAN KAHL (266-4891 OR 266-4816) TO COORDINATE ANY WORK AROUND TREES.
 - SALVAGE OR MAKE ARRANGEMENTS TO SALVAGE THE AMENITIES ON STATE STREET AND FITCH COURT. THESE AMENITIES INCLUDE BIKE RACKS, KIOSKS, TRASH RECEPTACLES, DRINKING FOUNTAINS AND BENCHES. COORDINATE THE REMOVAL WITH LISA LASCHINGER WITH THE STATE STREET MALL MAINTENANCE AT 608-266-0031 A MINIMUM OF 48 HOURS IN ADVANCE. SEE SHEET E-1 FOR LIGHT POLE WORK.
 - COORDINATE ALL CONSTRUCTION WITH WARREN HANSEN, THE CITY OF MADISON'S STREET VENDING COORDINATOR, A MINIMUM OF 2 WEEKS IN ADVANCE OF CLOSING OFF STATE STREET MALL OR REMOVING ANY OF THE EXISTING POLES ON STATE STREET. CONTACT AT 608-261-9171 OR WHANSEN@CITYOFMADISON.COM.



PLOT SCALE:
REV. DATE:
ORIGINATOR: CITY OF MADISON, STREETS DIVISION

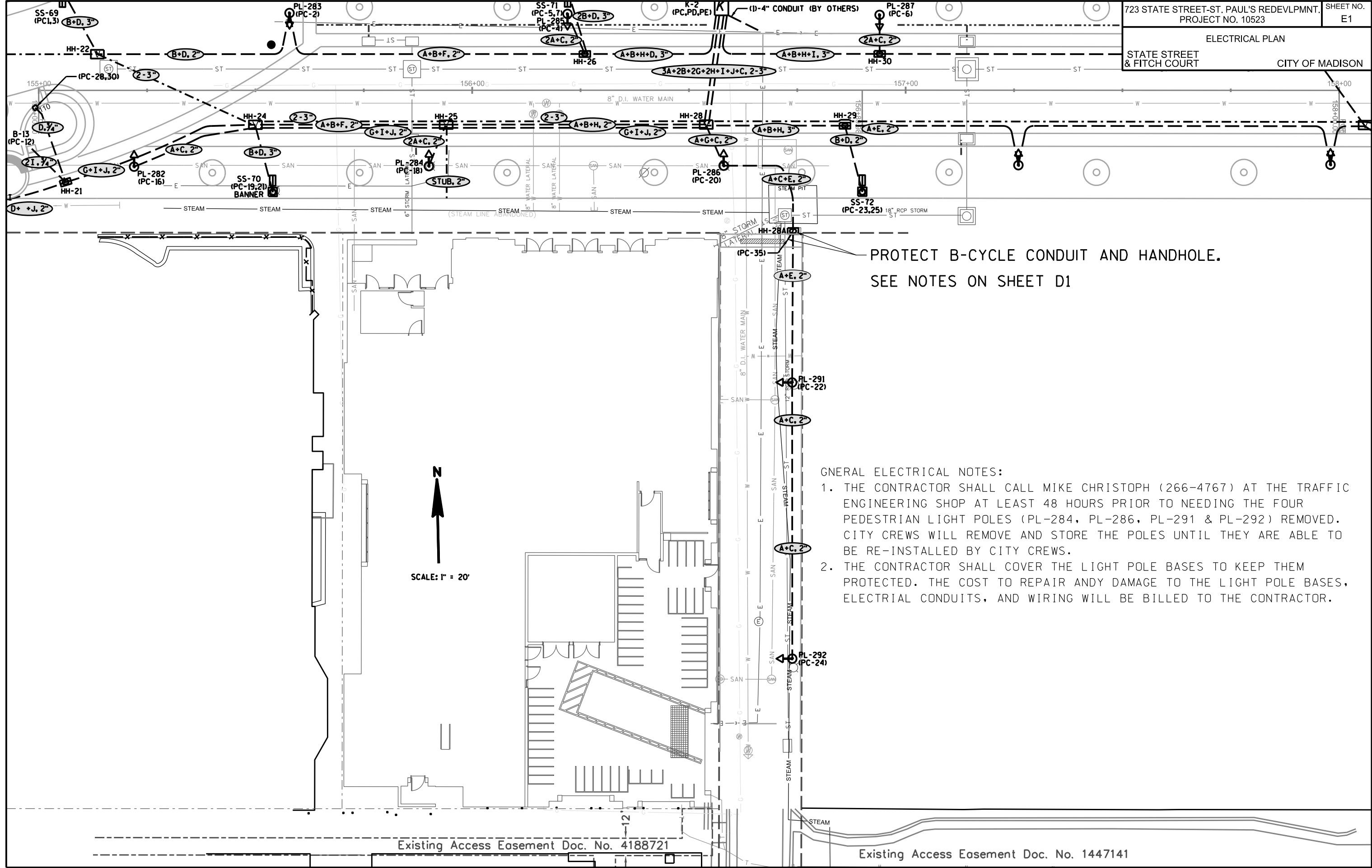
Existing Access Easement Doc. No. 4188721

Existing Access Easement Doc. No. 1447141

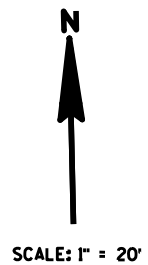


- NOTES:
- COORDINATE WATER SERVICE AND CONNECTION TO MAIN WITH MADISON WATER UTILITY BEFORE BEGINNING WORK. CONTACT CITY OF MADISON WATER UTILITY TO OBTAIN CONNECTION PERMIT FOR WATER SERVICE.
 - DIMENSIONS FOR STORM AND SANITARY LATERALS ARE FROM AS-BUILTS WHEREAS LINWORK IS FROM SURVEY
 - DO NOT DISTURB EXISTING ABANDONED STEAM PIT OR STEAM LINES (CONTAIN ASBESTOS MATERIAL)

PLOT SCALE:
PLOT NAME:
REV. DATE:
ORIGINATOR: CITY OF MADISON, STREETS DIVISION



PROTECT B-CYCLE CONDUIT AND HANDHOLE.
SEE NOTES ON SHEET D1



- GENERAL ELECTRICAL NOTES:
1. THE CONTRACTOR SHALL CALL MIKE CHRISTOPH (266-4767) AT THE TRAFFIC ENGINEERING SHOP AT LEAST 48 HOURS PRIOR TO NEEDING THE FOUR PEDESTRIAN LIGHT POLES (PL-284, PL-286, PL-291 & PL-292) REMOVED. CITY CREWS WILL REMOVE AND STORE THE POLES UNTIL THEY ARE ABLE TO BE RE-INSTALLED BY CITY CREWS.
 2. THE CONTRACTOR SHALL COVER THE LIGHT POLE BASES TO KEEP THEM PROTECTED. THE COST TO REPAIR ANY DAMAGE TO THE LIGHT POLE BASES, ELECTRICAL CONDUITS, AND WIRING WILL BE BILLED TO THE CONTRACTOR.

Existing Access Easement Doc. No. 4188721

Existing Access Easement Doc. No. 1447141

PLOT SCALE:
PLOT NAME:
REV. DATE:
ORIGINATOR: CITY OF MADISON, STREETS DIVISION