

Madison, Wisconsin

# CITY OF MADISON

## CITY ENGINEERING DIVISION

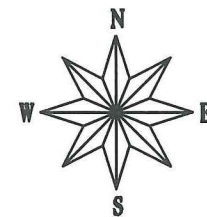
### DEPARTMENT OF PUBLIC WORKS

## PLAN OF PROPOSED IMPROVEMENT

INDEX OF SHEETS

SHEET NO.	TITLE
1	GENERAL NOTES
D1	TYPICAL SECTIONS
D2	TREE GRATE DETAILS
D3	S. HANCOCK STREET TERRACE DETAIL
D4	STREET AND SIDEWALK PLAN
P1	STREET AND SIDEWALK PLAN
U1	STORM SEWER PLAN

### 320 E. WILSON STREET

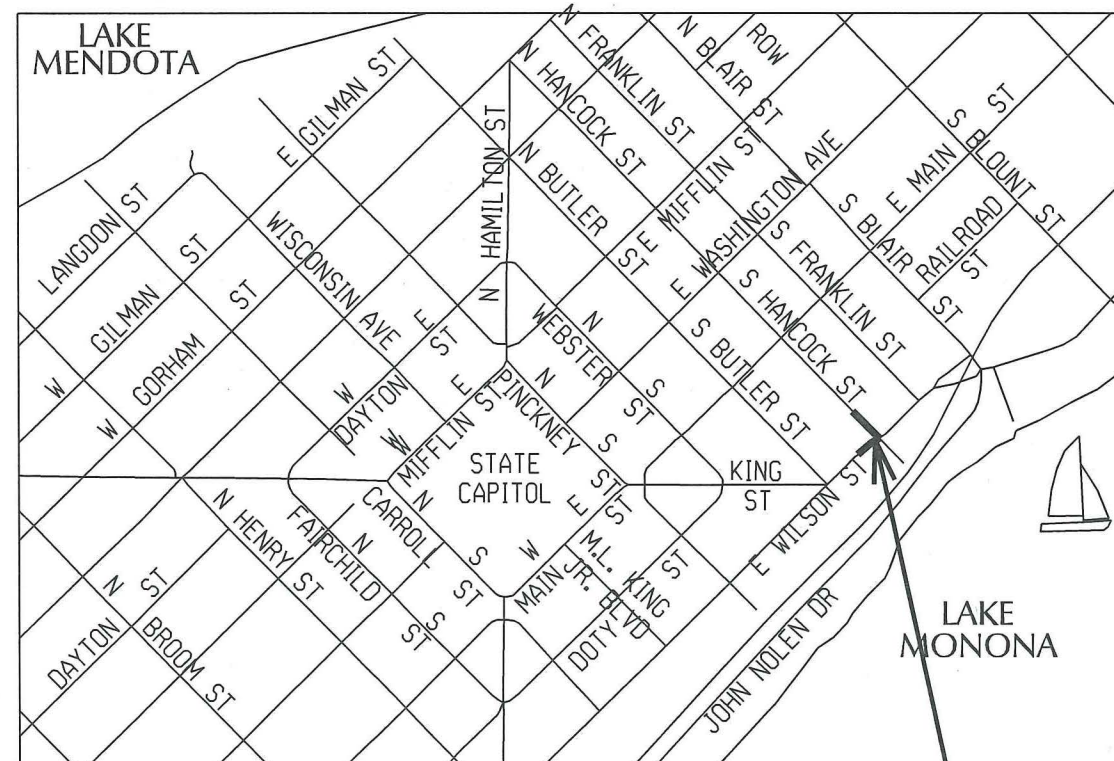


CITY PROJECT NO. 10919  
 CONTRACT NO. 2395  
 MUNIS NO. 10919

CONVENTIONAL SIGNS

FIELD VERIFY ALL UTILITY LOCATIONS

GAS	— G —
STORM SEWER	— ST —
SANITARY SEWER	— SAN —
WATER	— W —
OVERHEAD ELECTRIC	— OH —
POWER POLE	□
PARKING SPACE NUMBER SIGN	P 0
MULTI-SPACE PARKING PAY STATION	P
ADA COMPLIANT RAMP W/ DETECTABLE WARNING FIELD	▣
COMBUSTIBLE FLUIDS	☀



PROJECT LOCATION

PUBLIC IMPROVEMENT PROJECT APPROVED

MAY 19, 2015

BY THE COMMON COUNCIL OF MADISON, WISCONSIN

PUBLIC IMPROVEMENT DESIGN APPROVED BY:

*Michael Rowley* 10/20/2015  
 City Engineer Date

STORM SEWER DESIGNED BY:



STREET DESIGNED BY:



CONTRACTOR/DEVELOPER SHALL SUBMIT A TRAFFIC CONTROL PLAN TO CITY TRAFFIC ENGINEERING AT LEAST 10 WORKING DAYS PRIOR TO THE START OF WORK. WORK WITHIN THE RIGHT-OF-WAY SHALL NOT BEGIN UNTIL THE TRAFFIC CONTROL PLAN IS APPROVED.

ANY PAVEMENT MARKINGS THAT ARE REMOVED OR DAMAGED SHALL BE REPLACED BY THE DEVELOPER/CONTRACTOR AS DIRECTED BY CITY TRAFFIC ENGINEERING.

THE LOCATION AND INFORMATION FOR PROPOSED NEW TREES, IN THE PUBLIC RIGHT OF WAY OR ON PUBLIC LANDS ARE APPROXIMATE AND ARE SHOWN FOR REFERENCE ONLY.

CONTRACTOR SHALL CONTACT DEAN KAHL WITH CITY FORESTRY (266-4891 OR 266-4816) AT LEAST ONE WEEK PRIOR TO PLANTING TO ALLOW FORESTRY TO MARK THE PLANTING SITES AND REVIEW PLANTING SPECIFICATIONS WITH THE LANDSCAPING CONTRACTOR. TREE PLANTING WITHIN THE PUBLIC RIGHT OF WAY OR ON PUBLIC LANDS SHALL BE APPROVED BY THE CITY FORESTER PRIOR TO INSTALLATION.

NO TREES IN THE RIGHT OF WAY OR ON PUBLIC LANDS SHALL BE TRIMMED, PRUNED, REMOVED OR ADVERSELY AFFECTED IN ANY WAY UNTIL THE DEVELOPER HAS RECEIVED WRITTEN PERMISSION FROM THE CITY ENGINEER OR CITY FORESTER. SAID WRITTEN PERMISSION SHALL INCLUDE LANGUAGE INDICATING THAT SECTION 10.101 OF THE MADISON GENERAL ORDINANCES AND ADMINISTRATIVE PROCEDURE MEMORANDUM NO. 6-2, REFERING TO NOTIFICATION OF PROPERTY OCCUPANTS AND/OR OWNERS, HAS BEEN COMPLIED WITH.

ALL PAVEMENT WITHIN THE EAST WILSON STREET RIGHT-OF-WAY SHALL BE TYPE C PAVEMENT

ALL PAVEMENT WITHIN THE SOUTH HANCOCK STREET RIGHT-OF-WAY SHALL BE TYPE B PAVEMENT.

ALL GUTTERS SHALL DRAIN WITH A MINIMUM GRADES OF 0.5% TOWARD STORM SEWER INLETS.

THE CROSS SLOPE OF SIDEWALKS AND BARRIER FREE SIDEWALK CURB RAMPS SHALL BE 1.5%. THE LONGITUDINAL GRADE OF BARRIER FREE SIDEWALK CURB RAMPS SHALL NOT EXCEED 8.33%. ALL SIDEWALK RAMPS SHALL BE CONSTRUCTED ACCORDING TO S.D.D. 3.03. AT ALL OTHER LOCATIONS THE LONGITUDINAL GRADE OF SIDEWALKS SHALL NOT EXCEED 5.0 % OR THE ADJACENT STREET GRADE WHICHEVER IS GREATER NOR BE LESS THAN 0.5% AND SHALL DRAIN TOWARD STORM SEWER INLETS. SIDE SLOPES WITHIN TEN FEET OF A PUBLIC SIDEWALK SHALL NOT EXCEED 4:00:1. ALL SIDEWALK AND SIDEWALK RAMP ELEVATIONS AND GRADES SHALL BE FIELD VERIFIED AND SET TO COMPLY WITH THE CITY OF MADISON STANDARD SPECIFICATIONS AND THE A.D.A. GUIDELINES.

OBTAIN A PRINT OUT OF THE ALIGNMENT FROM THE CITY ENGINEER PRIOR TO STAKING THIS PROJECT.

CURB STATION AND OFFSETS SHALL BE TO THE FACE OF CURB UNLESS OTHERWISE INDICATED. CURB ELEVATIONS SHALL BE TO THE TOP OF CURB (OR EXTENDED TOP OF CURB FOR DRIVEWAYS OR RAMPS) UNLESS OTHERWISE INDICATED.

POWER POLES AND OTHER OBSTRUCTIONS SHALL BE MOVED TO PROVIDE 2 FEET MINIMUM OF CLEAR DISTANCE FROM ANY FACE OF CURB OR EDGE OF SIDEWALK.

ANY INFORMATION SHOWN ON THIS PLAN, WHICH IS NOT PART OF THIS PROJECT, IS PRELIMINARY AND NOT FOR CONSTRUCTION.

THERE MAY BE EXISTING UTILITIES OR OTHER FEATURES WHICH ARE EITHER NOT SHOWN OR SHOWN INCORRECTLY ON THIS PLAN. IT IS THE RESPONSIBILITY OF THE DEVELOPER TO LOCATE AND IDENTIFY ALL UTILITIES AND TOPOGRAPHY WHICH MAY AFFECT THE CONSTRUCTION OF THESE IMPROVEMENTS.

ALL PERMANENT SIGNING AND POSTING WILL BE DETERMINED AND PROVIDED BY THE TRAFFIC ENGINEERING DIVISION, FOLLOWING CONSTRUCTION OF THESE IMPROVEMENTS.

THE DEVELOPER SHALL PROVIDE, INSTALL AND MAINTAIN ALL STREET END BARRICADES, SIGNING AND TRAFFIC CONTROL, AS REQUIRED BY THE CITY TRAFFIC ENGINEER.

PAVEMENT SAWCUTS SHALL BE AS DIRECTED BY THE CITY CONSTRUCTION ENGINEER. SAWCUTS SHOWN ON THE PLAN ARE APPROXIMATE.

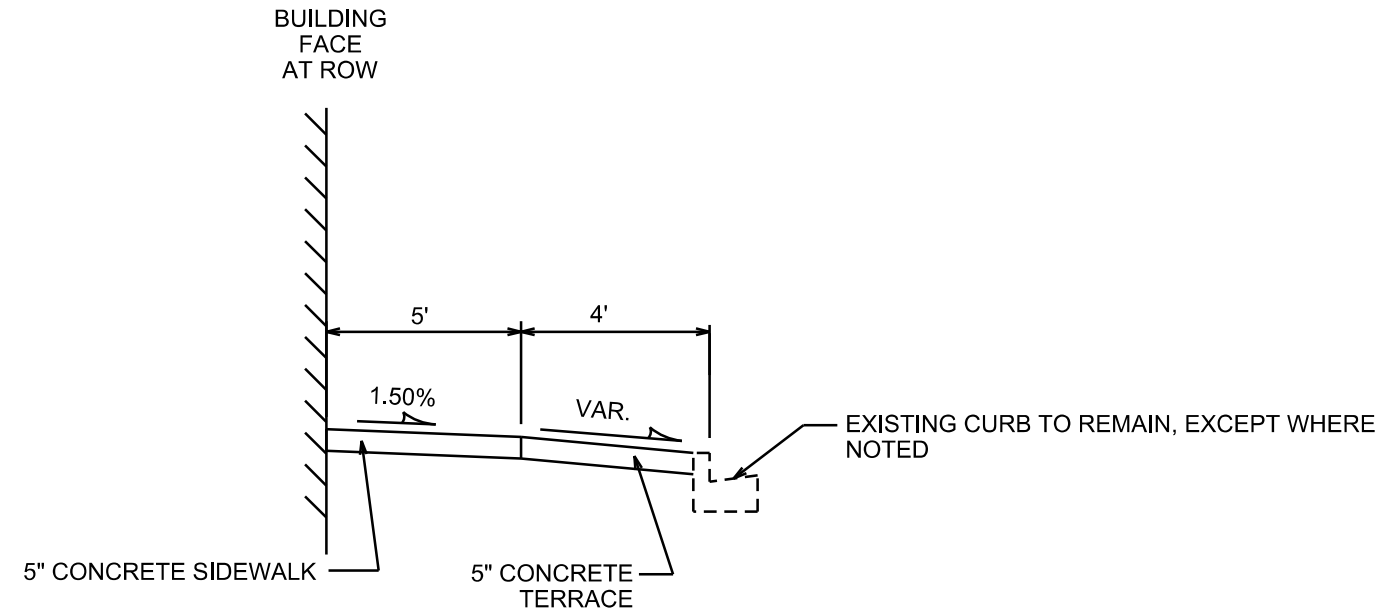
DAMAGE TO ANY EXISTING CURB, PAVEMENT, SIDEWALK, ETC. THAT IS TO REMAIN SHALL BE REPAIRED BY THE DEVELOPER/CONTRACTOR AS DIRECTED BY THE ENGINEER.

PLOT SCALE: \_\_\_\_\_

PLOT NAME: \_\_\_\_\_

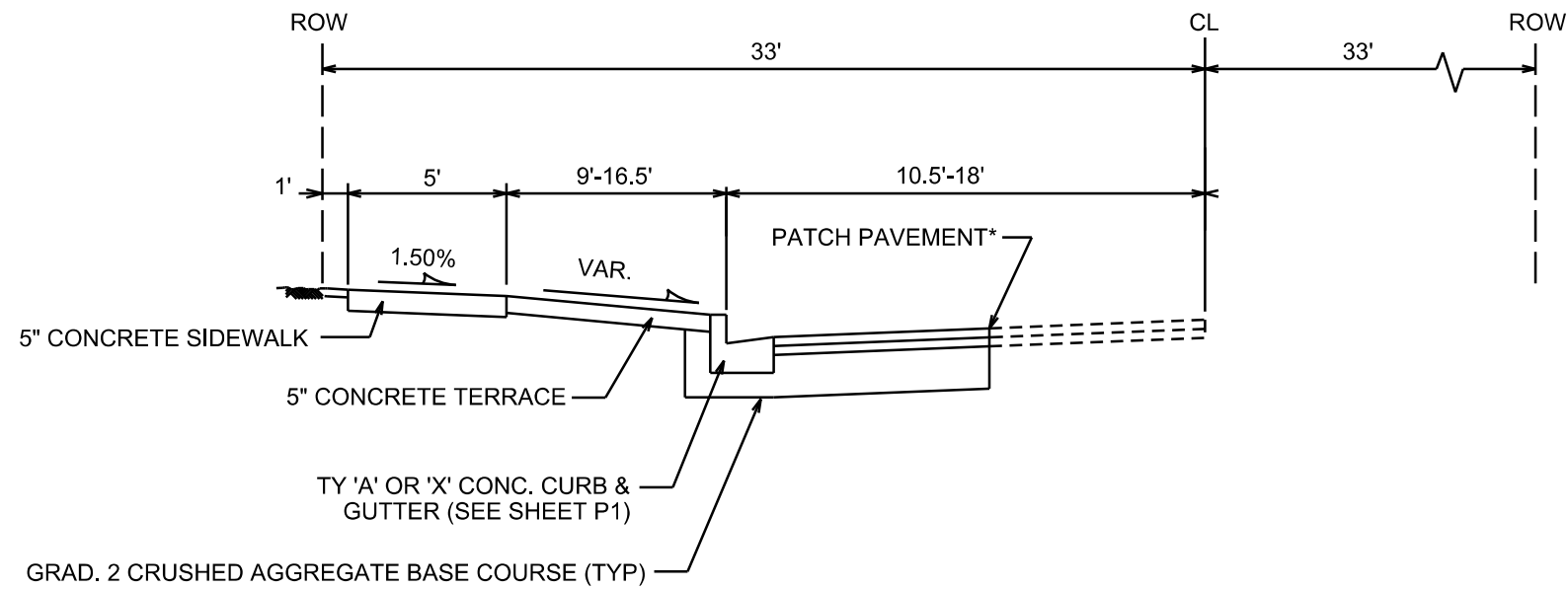
REV. DATE: \_\_\_\_\_

ORIGINATOR: CITY OF MADISON, STREETS DIVISION



**TYPICAL SECTION**

EAST WILSON STREET  
NOT TO SCALE



**TYPICAL SECTION**

NORTH HANCOCK STREET  
NOT TO SCALE

NOTES:

\* MILL & OVERLAY LIMITS ARE APPROXIMATE. PATCH PAVEMENT PER CITY'S PATCHING CRITERIA. MILL & OVERLAY MAY NOT BE NECESSARY IF PAVEMENT IS UNDAMAGED, AS DECIDED BY THE CONSTRUCTION ENGINEER. FINAL MILL & OVERLAY LIMITS TO BE DETERMINED BY THE CONSTRUCTION ENGINEER.

PLOT SCALE: \_\_\_\_\_

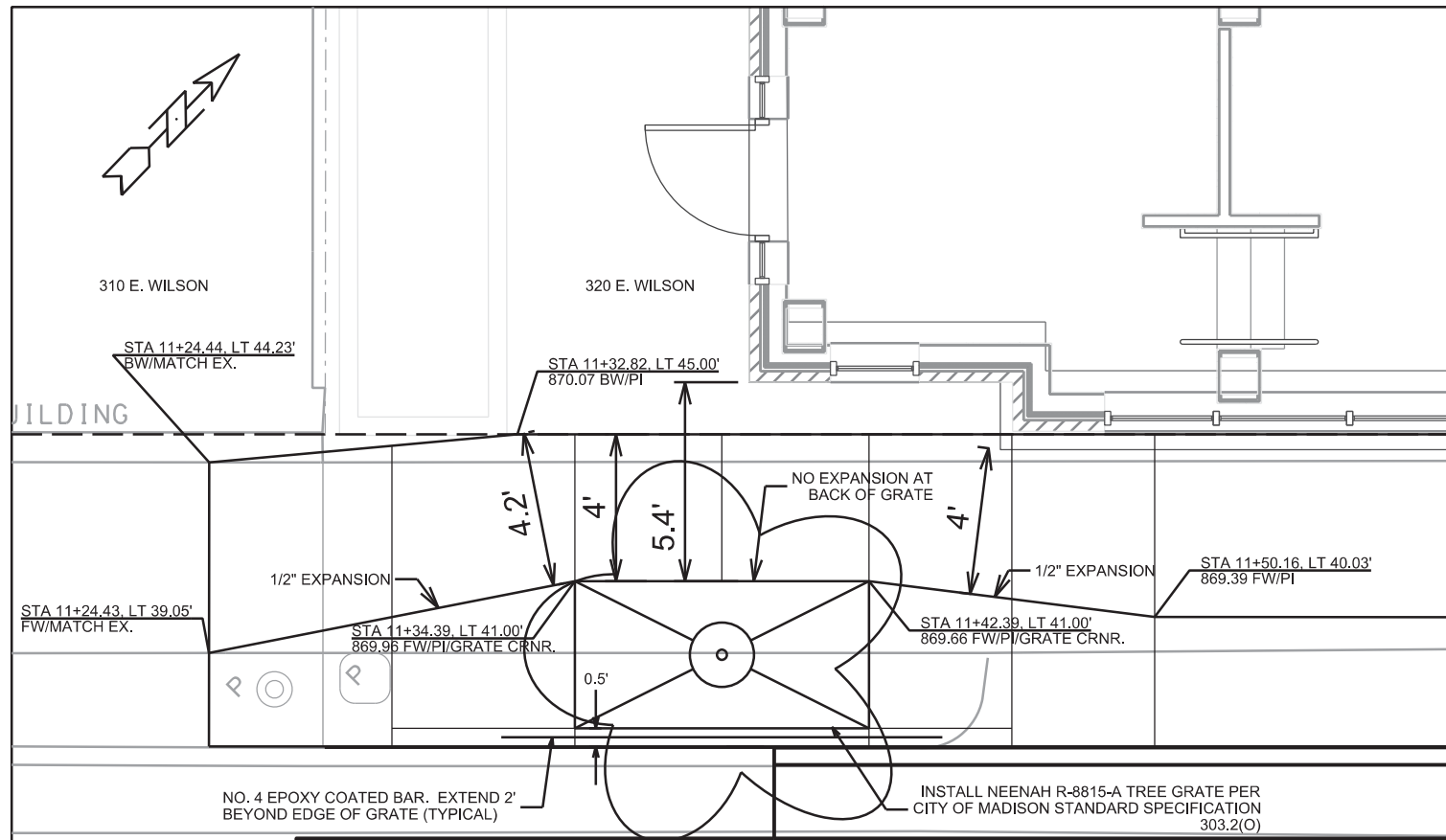
PLOT NAME: \_\_\_\_\_

REV. DATE: \_\_\_\_\_

ORIGINATOR: CITY OF MADISON, STREETS DIVISION

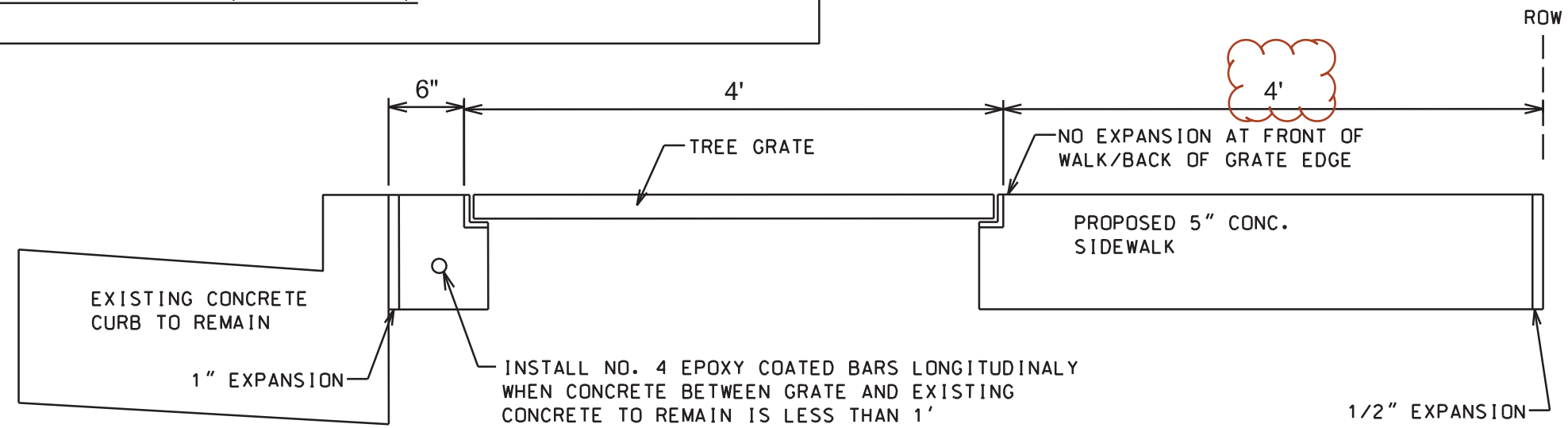
TREE GRATE DETAIL

E. WILSON ST. CITY OF MADISON  
REV. 2015 10-28 BY JPS



TREE GRATE SIDEWALK AND TERRACE DETAIL (AT STA 11+38)

SCALE 1"=5'



TREE GRATE SECTION DETAIL  
NOT TO SCALE

NOTES:

1. TREE GRATE LOCATIONS TO BE VERIFIED WITH CITY FORESTRY
2. VERIFY JOINT PATTERN WITH ENGINEER
3. REFER TO S.D.D. 2.02 FOR BACKFILL DETAILS

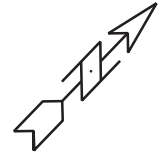
PLOT SCALE: \_\_\_\_\_

PLOT NAME: \_\_\_\_\_

REV. DATE: \_\_\_\_\_

ORIGINATOR: CITY OF MADISON, STREETS DIVISION





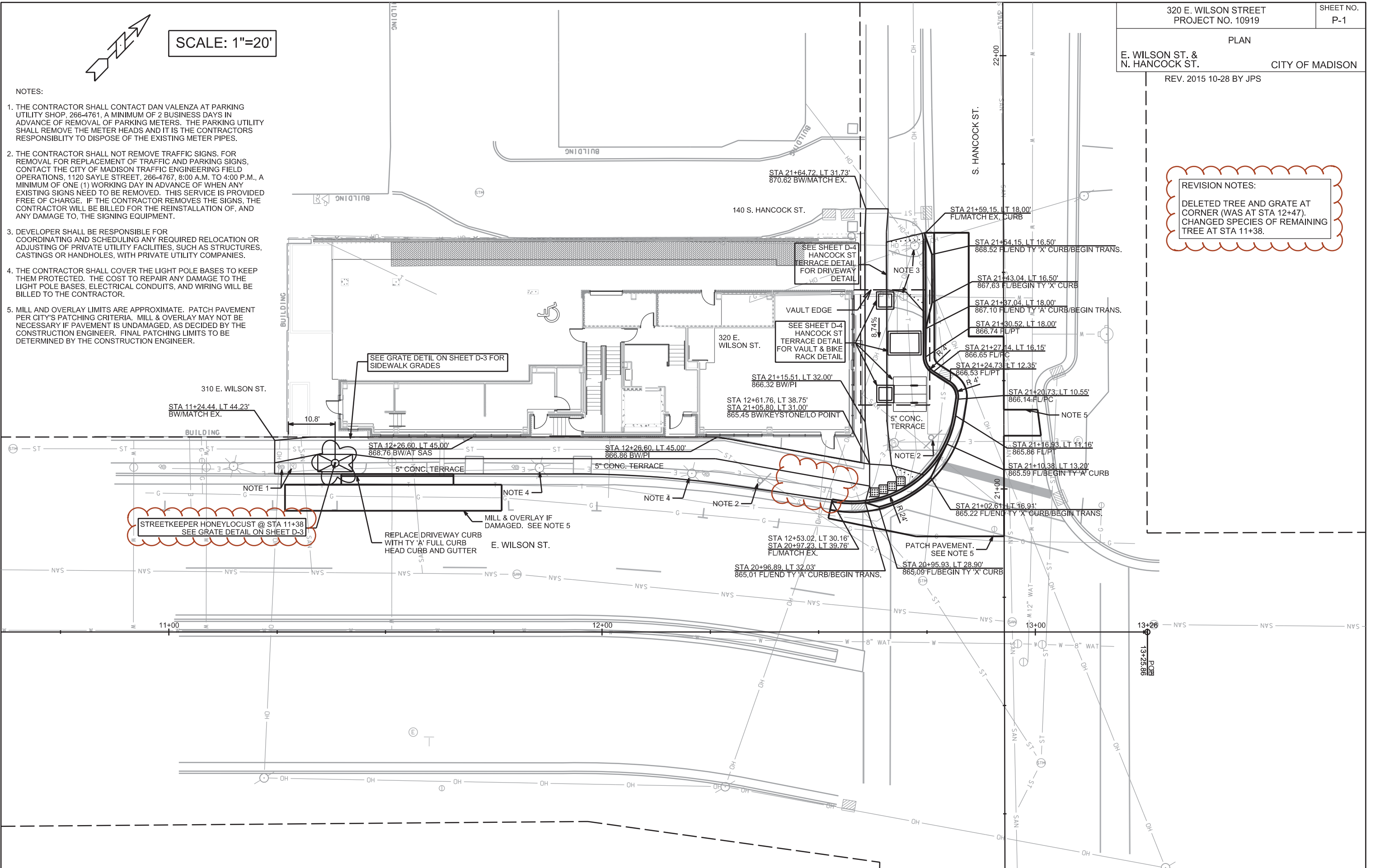
SCALE: 1"=20'

NOTES:

1. THE CONTRACTOR SHALL CONTACT DAN VALENZA AT PARKING UTILITY SHOP, 266-4761, A MINIMUM OF 2 BUSINESS DAYS IN ADVANCE OF REMOVAL OF PARKING METERS. THE PARKING UTILITY SHALL REMOVE THE METER HEADS AND IT IS THE CONTRACTORS RESPONSIBILITY TO DISPOSE OF THE EXISTING METER PIPES.
2. THE CONTRACTOR SHALL NOT REMOVE TRAFFIC SIGNS. FOR REMOVAL FOR REPLACEMENT OF TRAFFIC AND PARKING SIGNS, CONTACT THE CITY OF MADISON TRAFFIC ENGINEERING FIELD OPERATIONS, 1120 SAYLE STREET, 266-4767, 8:00 A.M. TO 4:00 P.M., A MINIMUM OF ONE (1) WORKING DAY IN ADVANCE OF WHEN ANY EXISTING SIGNS NEED TO BE REMOVED. THIS SERVICE IS PROVIDED FREE OF CHARGE. IF THE CONTRACTOR REMOVES THE SIGNS, THE CONTRACTOR WILL BE BILLED FOR THE REINSTALLATION OF, AND ANY DAMAGE TO, THE SIGNING EQUIPMENT.
3. DEVELOPER SHALL BE RESPONSIBLE FOR COORDINATING AND SCHEDULING ANY REQUIRED RELOCATION OR ADJUSTING OF PRIVATE UTILITY FACILITIES, SUCH AS STRUCTURES, CASTINGS OR HANDHOLES, WITH PRIVATE UTILITY COMPANIES.
4. THE CONTRACTOR SHALL COVER THE LIGHT POLE BASES TO KEEP THEM PROTECTED. THE COST TO REPAIR ANY DAMAGE TO THE LIGHT POLE BASES, ELECTRICAL CONDUITS, AND WIRING WILL BE BILLED TO THE CONTRACTOR.
5. MILL AND OVERLAY LIMITS ARE APPROXIMATE. PATCH PAVEMENT PER CITY'S PATCHING CRITERIA. MILL & OVERLAY MAY NOT BE NECESSARY IF PAVEMENT IS UNDAMAGED, AS DECIDED BY THE CONSTRUCTION ENGINEER. FINAL PATCHING LIMITS TO BE DETERMINED BY THE CONSTRUCTION ENGINEER.

REVISION NOTES:

DELETED TREE AND GRATE AT CORNER (WAS AT STA 12+47).  
CHANGED SPECIES OF REMAINING TREE AT STA 11+38.



PLOT SCALE:

PLOT NAME:

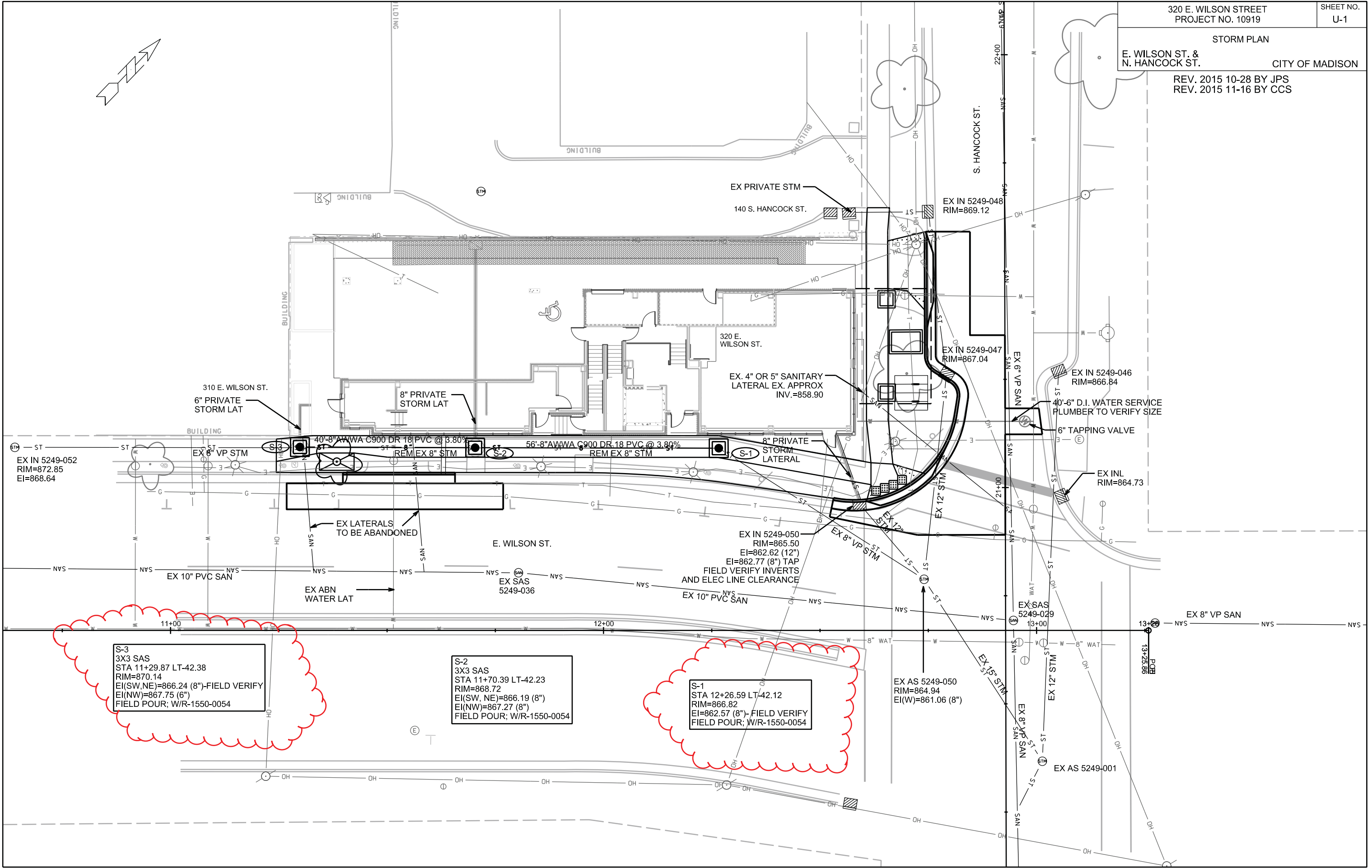
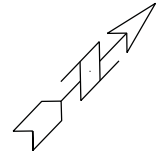
REV. DATE:

ORIGINATOR: CITY OF MADISON, STREETS DIVISION

STORM PLAN

E. WILSON ST. &  
N. HANCOCK ST. CITY OF MADISON

REV. 2015 10-28 BY JPS  
REV. 2015 11-16 BY CCS



S-3  
3X3 SAS  
STA 11+29.87 LT-42.38  
RIM=870.14  
EI(SW,NE)=866.24 (8")-FIELD VERIFY  
EI(NW)=867.75 (6")  
FIELD POUR; W/R-1550-0054

S-2  
3X3 SAS  
STA 11+70.39 LT-42.23  
RIM=868.72  
EI(SW, NE)=866.19 (8")  
EI(NW)=867.27 (8")  
FIELD POUR; W/R-1550-0054

S-1  
STA 12+26.59 LT-42.12  
RIM=866.82  
EI=862.57 (8")- FIELD VERIFY  
FIELD POUR; W/R-1550-0054

PLOT SCALE:

PLOT NAME:

REV. DATE:

ORIGINATOR: CITY OF MADISON, STREETS DIVISION