



Madison, Wisconsin

CITY OF MADISON

CITY ENGINEERING DIVISION
DEPARTMENT OF PUBLIC WORKS

PLAN OF PROPOSED IMPROVEMENT

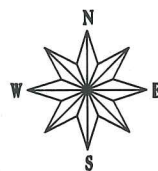
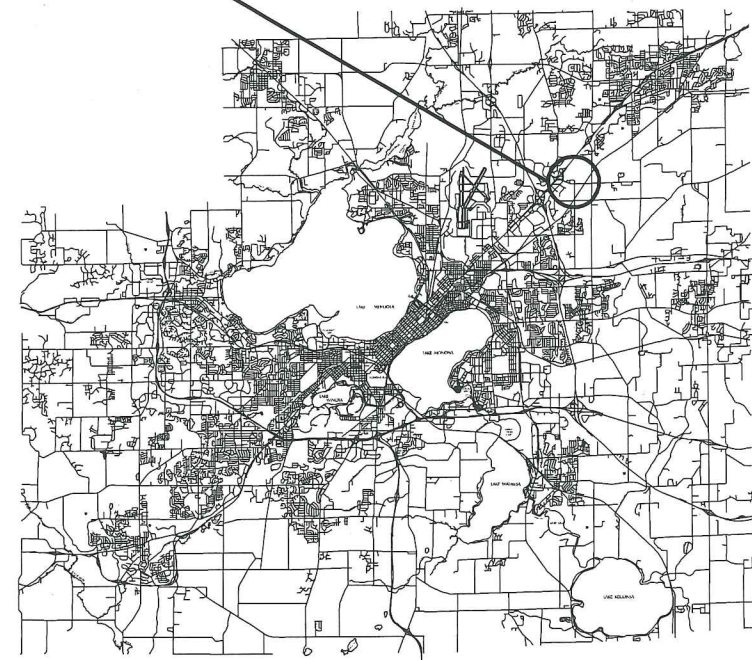
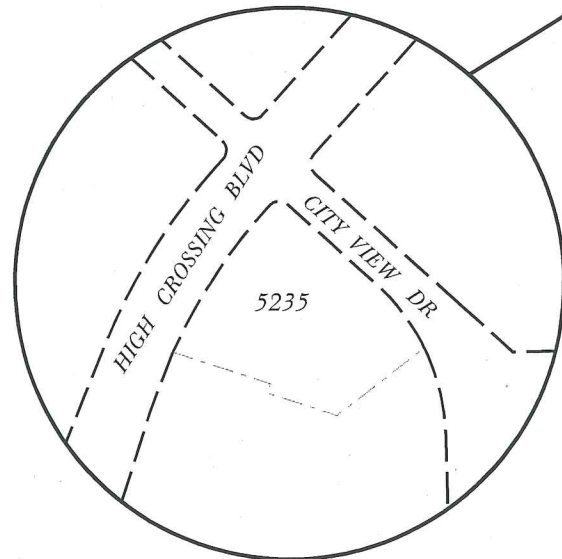
5235 HIGH CROSSING BOULEVARD

PROJECT NO. 11274

MUNIS NO. 11274

CITY CONTRACT NO. 7571

PROJECT LOCATION



INDEX OF SHEETS

SHEET NO.	TITLE
1	GENERAL NOTES
D1	TYPICAL SECTION
D2	STREET PLAN
P1	SANITARY SEWER UTILITY PLAN & PROFILE
U1	SANITARY SEWER UTILITY PLAN & PROFILE
U2	STORM SEWER AND WATER UTILITY PLAN

CONVENTIONAL SIGNS	
FIELD VERIFY ALL UTILITY LOCATIONS	
GAS	— G —
STORM SEWER	— ST —
SANITARY SEWER	— SAN —
WATER	— W —
OVERHEAD ELECTRIC	— OH —
FIBER OPTIC	— FO —
POWER POLE	⊕
ADA COMPLIANT RAMP W/ DETECTABLE WARNING FIELD	[Symbol]
COMBUSTIBLE FLUIDS	[Symbol]

PUBLIC IMPROVEMENT PROJECT APPROVED

NOVEMBER 3, 2015

BY THE COMMON COUNCIL OF MADISON, WISCONSIN

PUBLIC IMPROVEMENT DESIGN APPROVED BY:

[Signature] 4/24/15
City Engineer Date

SANITARY SEWER DESIGNED BY:
[Signature]
11/24/15

STORM SEWER LATERALS DESIGNED BY:
[Signature]
11/24/15

STREET DESIGNED BY:
[Signature]
JOHN P. SAPP
44054
Janesville, WI
11-24-15
PROFESSIONAL ENGINEER

PLOT SCALE: _____
PLOT NAME: _____
REV. DATE: _____
ORIGINATOR: CITY OF MADISON, STREETS DIVISION

DETAIL

STANDARD NOTES
AND COMMENTS

CITY OF MADISON

CONTRACTOR/DEVELOPER SHALL SUBMIT A TRAFFIC CONTROL PLAN TO CITY TRAFFIC ENGINEERING AT LEAST 10 WORKING DAYS PRIOR TO THE START OF WORK. WORK WITHIN THE RIGHT-OF-WAY SHALL NOT BEGIN UNTIL THE TRAFFIC CONTROL PLAN IS APPROVED.

ANY PAVEMENT MARKINGS THAT ARE REMOVED OR DAMAGED SHALL BE REPLACED BY THE DEVELOPER/CONTRACTOR AS DIRECTED BY CITY TRAFFIC ENGINEERING.

THE LOCATION AND INFORMATION FOR PROPOSED NEW TREES, IN THE PUBLIC RIGHT OF WAY OR ON PUBLIC LANDS ARE APPROXIMATE AND ARE SHOWN FOR REFERENCE ONLY.

CONTRACTOR SHALL CONTACT DEAN KAHL WITH CITY FORESTRY (266-4891 OR 266-4816) AT LEAST ONE WEEK PRIOR TO PLANTING TO ALLOW FORESTRY TO MARK THE PLANTING SITES AND REVIEW PLANTING SPECIFICATIONS WITH THE LANDSCAPING CONTRACTOR. TREE PLANTING WITHIN THE PUBLIC RIGHT OF WAY OR ON PUBLIC LANDS SHALL BE APPROVED BY THE CITY FORESTER PRIOR TO INSTALLATION.

NO TREES IN THE RIGHT OF WAY OR ON PUBLIC LANDS SHALL BE TRIMMED, PRUNED, REMOVED OR ADVERSELY AFFECTED IN ANY WAY UNTIL THE DEVELOPER HAS RECEIVED WRITTEN PERMISSION FROM THE CITY ENGINEER OR CITY FORESTER. SAID WRITTEN PERMISSION SHALL INCLUDE LANGUAGE INDICATING THAT SECTION 10.101 OF THE MADISON GENERAL ORDINANCES AND ADMINISTRATIVE PROCEDURE MEMORANDUM NO. 6-2, REFERRING TO NOTIFICATION OF PROPERTY OCCUPANTS AND/OR OWNERS, HAS BEEN COMPLIED WITH. CONTACT BRIAN MEILLER WITH CITY FORESTRY AT 266-4816 TO COORDINATE ANY TREE REMOVALS.

ALL PAVEMENT WITHIN THE HIGH CROSSING BOULEVARD AND CITY VIEW DRIVE RIGHT-OF-WAYS SHALL BE TYPE C PAVEMENT.

ALL GUTTERS SHALL DRAIN WITH A MINIMUM GRADES OF 0.5% TOWARD STORM SEWER INLETS.

THE CROSS SLOPE OF SIDEWALKS AND BARRIER FREE SIDEWALK CURB RAMPS SHALL BE 1.5%. THE LONGITUDINAL GRADE OF BARRIER FREE SIDEWALK CURB RAMPS SHALL NOT EXCEED 8.33%. ALL SIDEWALK RAMPS SHALL BE CONSTRUCTED ACCORDING TO S.D.D. 3.03. AT ALL OTHER LOCATIONS THE LONGITUDINAL GRADE OF SIDEWALKS SHALL NOT EXCEED 5.0 % OR THE ADJACENT STREET GRADE WHICHEVER IS GREATER NOR BE LESS THAN 0.5% AND SHALL DRAIN TOWARD STORM SEWER INLETS. SIDE SLOPES WITHIN TEN FEET OF A PUBLIC SIDEWALK SHALL NOT EXCEED 4.00:1. ALL SIDEWALK AND SIDEWALK RAMP ELEVATIONS AND GRADES SHALL BE FIELD VERIFIED AND SET TO COMPLY WITH THE CITY OF MADISON STANDARD SPECIFICATIONS AND THE A.D.A. GUIDELINES.

OBTAIN A PRINT OUT OF THE ALIGNMENT FROM THE CITY ENGINEER PRIOR TO STAKING THIS PROJECT.

CURB STATION AND OFFSETS SHALL BE TO THE FACE OF CURB UNLESS OTHERWISE INDICATED. CURB ELEVATIONS SHALL BE TO THE TOP OF CURB (OR EXTENDED TOP OF CURB FOR DRIVEWAYS OR RAMPS) UNLESS OTHERWISE INDICATED.

POWER POLES AND OTHER OBSTRUCTIONS SHALL BE MOVED TO PROVIDE 2 FEET MINIMUM OF CLEAR DISTANCE FROM ANY FACE OF CURB OR EDGE OF SIDEWALK.

ANY INFORMATION SHOWN ON THIS PLAN, WHICH IS NOT PART OF THIS PROJECT, IS PRELIMINARY AND NOT FOR CONSTRUCTION.

THERE MAY BE EXISTING UTILITIES OR OTHER FEATURES WHICH ARE EITHER NOT SHOWN OR SHOWN INCORRECTLY ON THIS PLAN. IT IS THE RESPONSIBILITY OF THE DEVELOPER TO LOCATE AND IDENTIFY ALL UTILITIES AND TOPOGRAPHY WHICH MAY AFFECT THE CONSTRUCTION OF THESE IMPROVEMENTS.

ALL PERMANENT SIGNING AND POSTING WILL BE DETERMINED AND PROVIDED BY THE TRAFFIC ENGINEERING DIVISION, FOLLOWING CONSTRUCTION OF THESE IMPROVEMENTS.

THE DEVELOPER SHALL PROVIDE, INSTALL AND MAINTAIN ALL STREET END BARRICADES, SIGNING AND TRAFFIC CONTROL, AS REQUIRED BY THE CITY TRAFFIC ENGINEER.

PAVEMENT SAWCUTS SHALL BE AS DIRECTED BY THE CITY CONSTRUCTION ENGINEER. SAWCUTS SHOWN ON THE PLAN ARE APPROXIMATE.

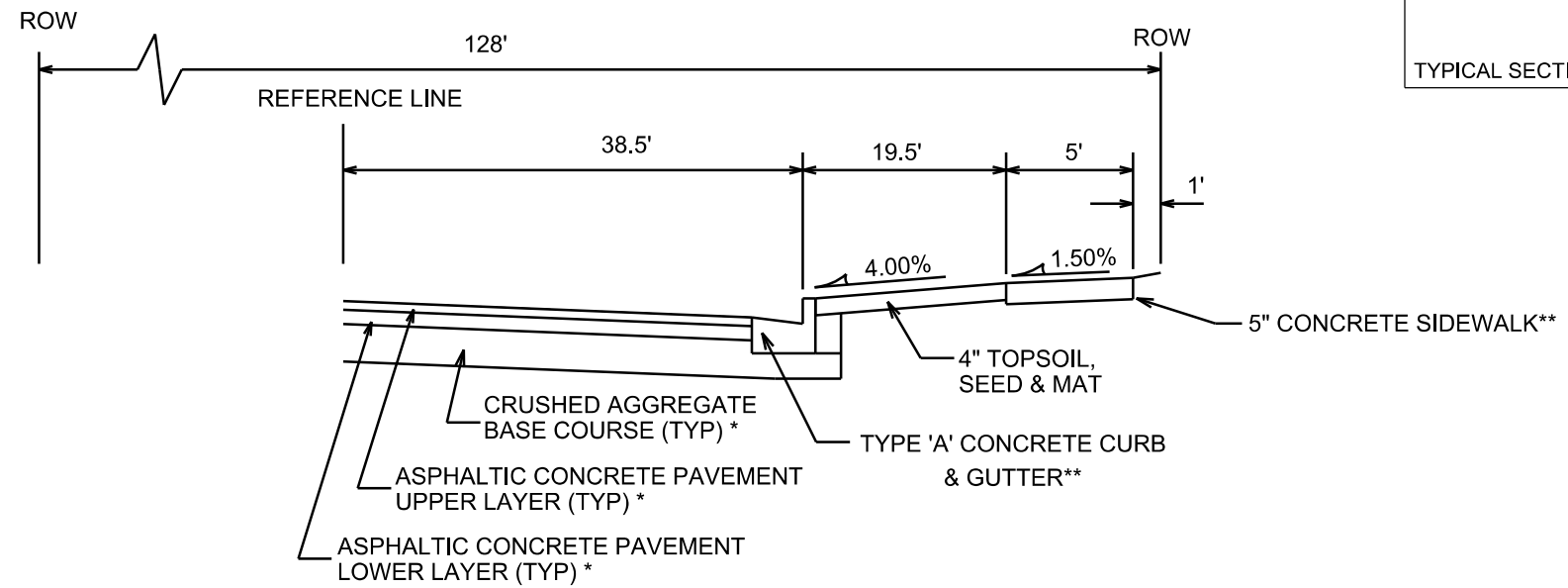
DAMAGE TO ANY EXISTING CURB, PAVEMENT, SIDEWALK, ETC. THAT IS TO REMAIN SHALL BE REPAIRED BY THE DEVELOPER/CONTRACTOR AS DIRECTED BY THE ENGINEER.

PLOT SCALE: _____

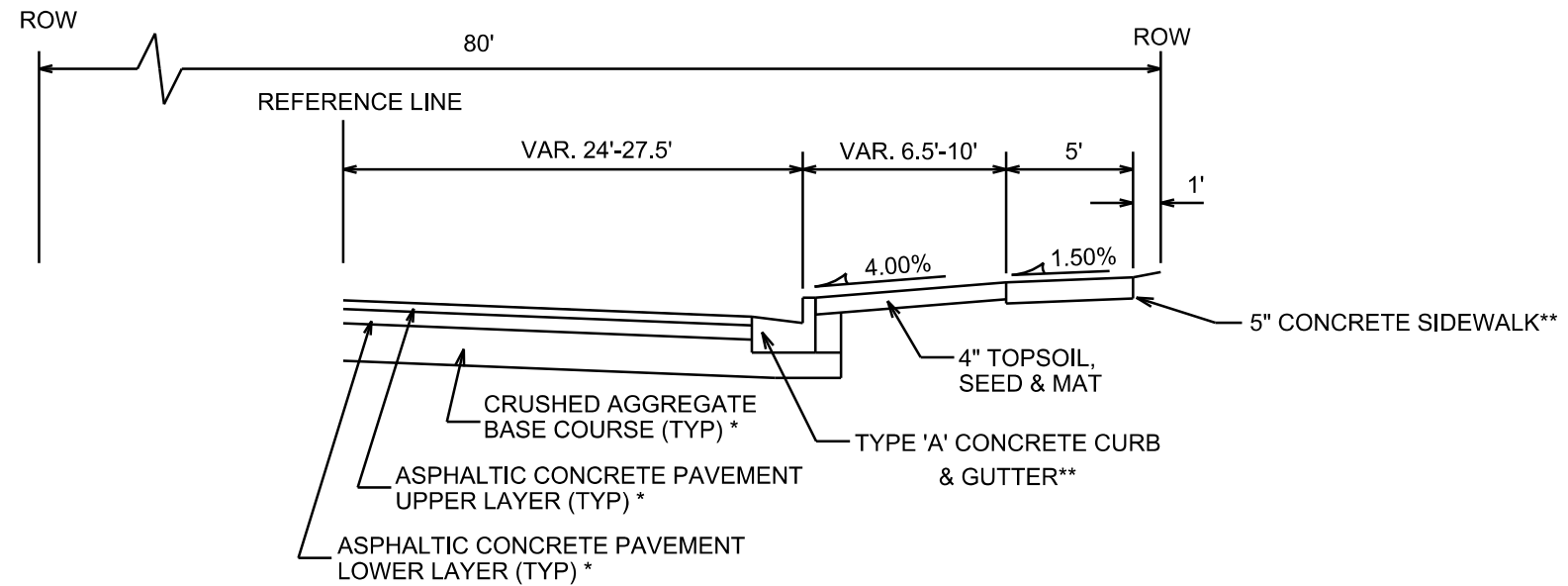
PLOT NAME: _____

REV. DATE: _____

ORIGINATOR: CITY OF MADISON, STREETS DIVISION



TYPICAL SECTION
HIGH CROSSING BLVD.



TYPICAL SECTION
CITY VIEW DR.

CITY OF MADISON MINIMUM PAVEMENT DESIGN

TYPE	CRUSHED AGG. BASE COURSE		ASPHALTIC CONCRETE PAVEMENT			
	LOWER LAYER GRADATION 1	UPPER LAYER GRADATION 2	LOWER LAYER TYPE	LOWER LAYER THICKNESS	UPPER LAYER TYPE	UPPER LAYER THICKNESS
A	6"	4"	E-0.3	1.75"	E-0.3	1.75"
B	6"	4"	E-1	2.25"	E-1	2"
C	6"	4"	E-3	3.25"	E-3	2"

NOTES:

TYPICAL SECTIONS NOT TO SCALE

* HIGH CROSSING BLVD. AND CITY VIEW DR. ARE TYPE 'C' PAVEMENT PER CITY OF MADISON MINIMUM PAVEMENT DESIGN. REPLACE PAVEMENT AS SHOWN ON THE PLANS.

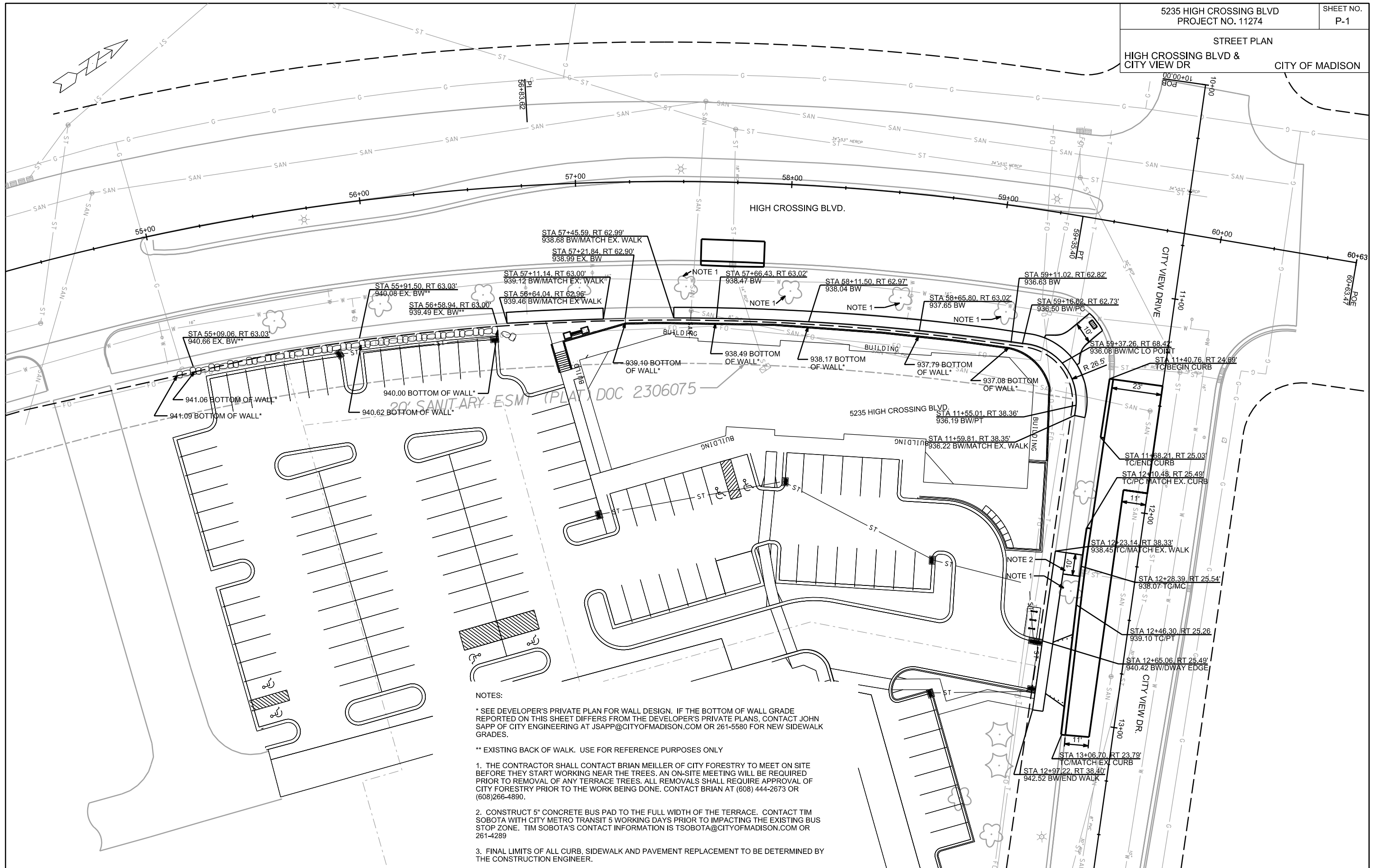
** REPLACE CURB AND SIDEWALK AS SHOWN ON THE PLANS.

PLOT SCALE: _____

PLOT NAME: _____

REV. DATE: _____

ORIGINATOR: CITY OF MADISON, STREETS DIVISION



NOTES:

* SEE DEVELOPER'S PRIVATE PLAN FOR WALL DESIGN. IF THE BOTTOM OF WALL GRADE REPORTED ON THIS SHEET DIFFERS FROM THE DEVELOPER'S PRIVATE PLANS, CONTACT JOHN SAPP OF CITY ENGINEERING AT JSAPP@CITYOFMADISON.COM OR 261-5580 FOR NEW SIDEWALK GRADES.

** EXISTING BACK OF WALK. USE FOR REFERENCE PURPOSES ONLY

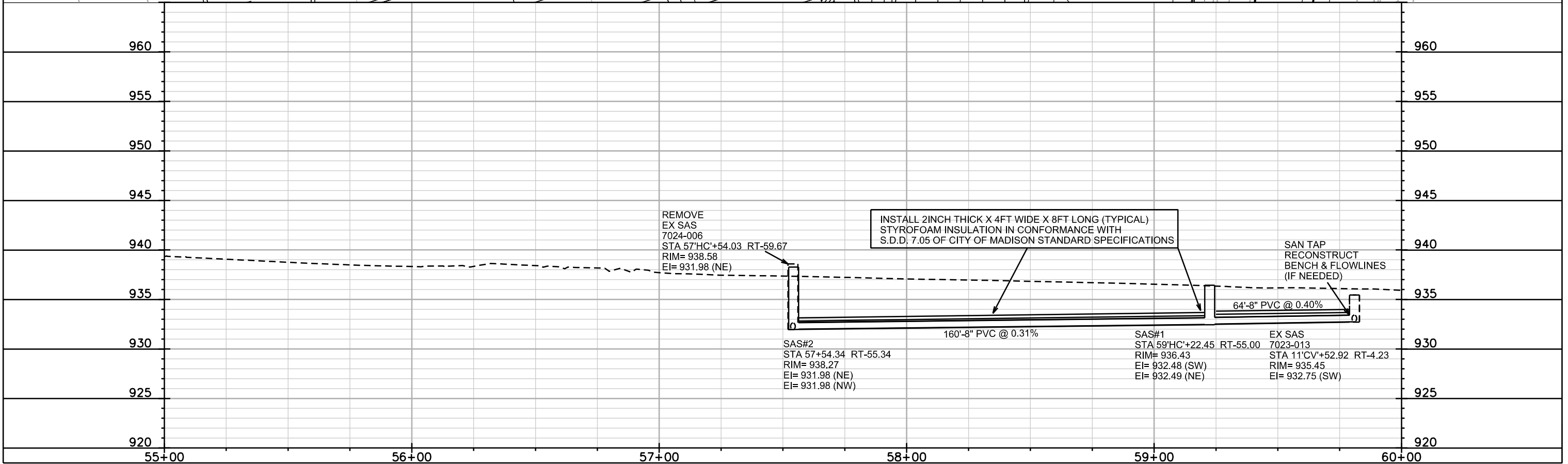
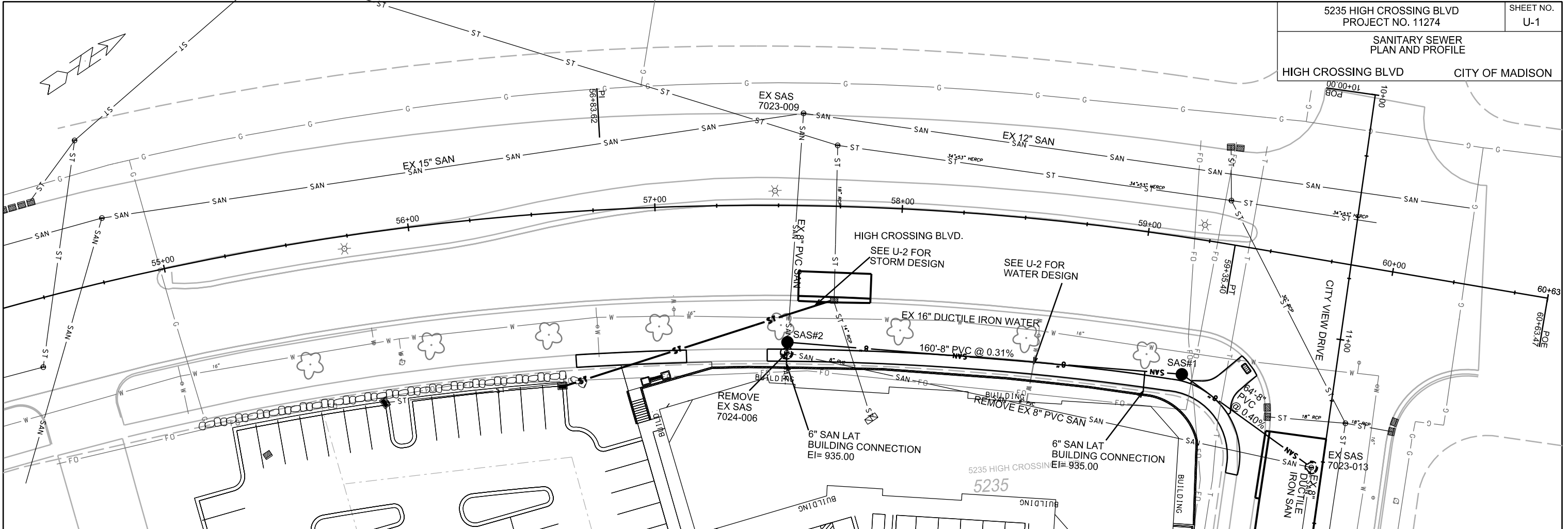
1. THE CONTRACTOR SHALL CONTACT BRIAN MEILLER OF CITY FORESTRY TO MEET ON SITE BEFORE THEY START WORKING NEAR THE TREES. AN ON-SITE MEETING WILL BE REQUIRED PRIOR TO REMOVAL OF ANY TERRACE TREES. ALL REMOVALS SHALL REQUIRE APPROVAL OF CITY FORESTRY PRIOR TO THE WORK BEING DONE. CONTACT BRIAN AT (608) 444-2673 OR (608)266-4890.
2. CONSTRUCT 5" CONCRETE BUS PAD TO THE FULL WIDTH OF THE TERRACE. CONTACT TIM SOBOTA WITH CITY METRO TRANSIT 5 WORKING DAYS PRIOR TO IMPACTING THE EXISTING BUS STOP ZONE. TIM SOBOTA'S CONTACT INFORMATION IS TSOBOTA@CITYOFMADISON.COM OR 261-4289
3. FINAL LIMITS OF ALL CURB, SIDEWALK AND PAVEMENT REPLACEMENT TO BE DETERMINED BY THE CONSTRUCTION ENGINEER.

PLOT SCALE:

PLOT NAME:

REV. DATE:

ORIGINATOR: CITY OF MADISON, STREETS DIVISION

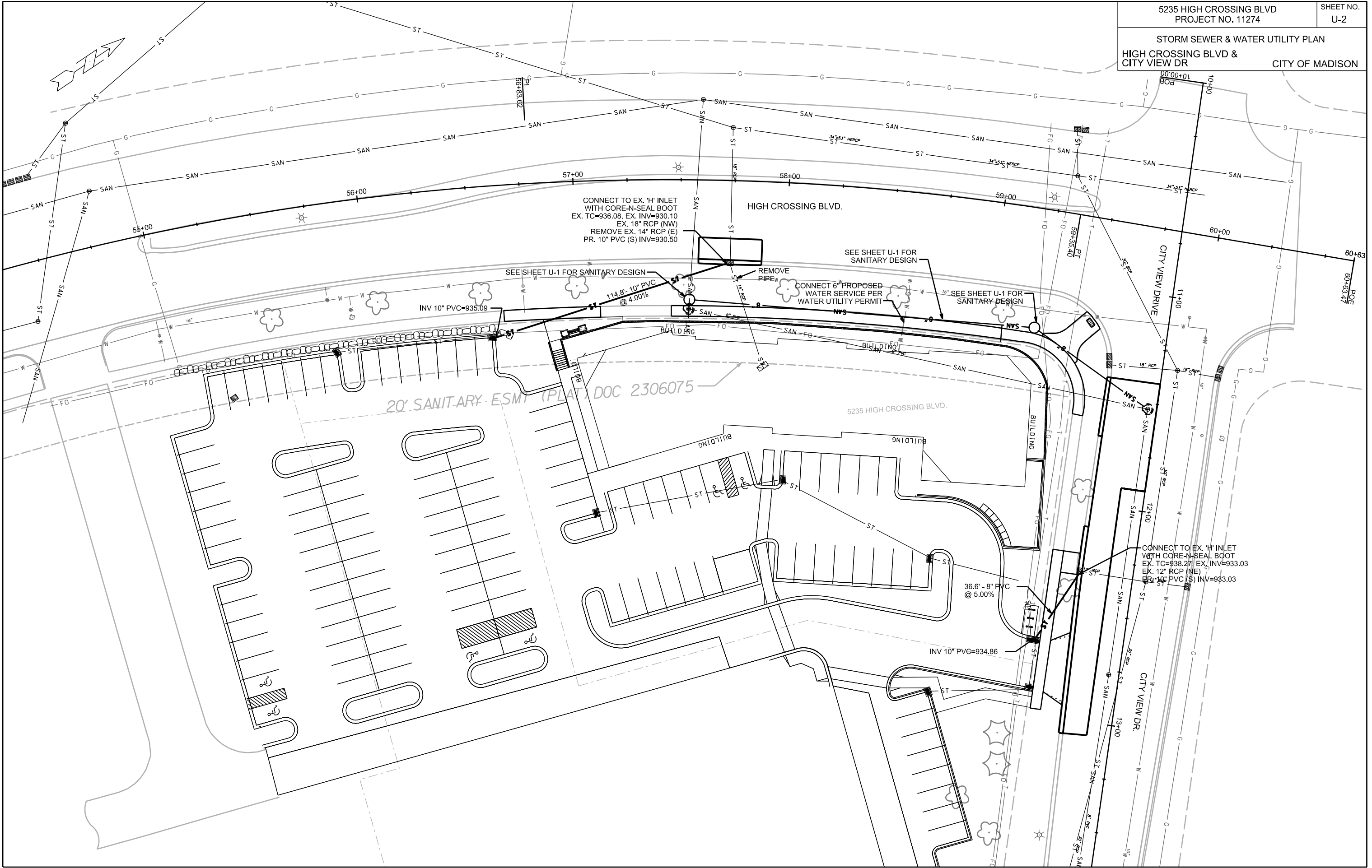


PLOT SCALE: _____

PLOT NAME: _____

REV. DATE: _____

ORIGINATOR: CITY OF MADISON, STREETS DIVISION



PLOT SCALE:

PLOT NAME:

REV. DATE:

ORIGINATOR: CITY OF MADISON, STREETS DIVISION