

Madison, Wisconsin

# CITY OF MADISON

## CITY ENGINEERING DIVISION

### DEPARTMENT OF PUBLIC WORKS

# PLAN OF PROPOSED IMPROVEMENT

PUBLIC IMPROVEMENT PROJECT APPROVED

MAY 2, 2017

BY THE COMMON COUNCIL OF MADISON, WISCONSIN

PUBLIC IMPROVEMENT DESIGN APPROVED BY:

*[Signature]* 3/14/18  
City Engineer Date

WATER AND STORM & SANITARY SEWERS DESIGNED BY:

SEE C400 SHEET

STREET DESIGNED BY:



ELECTRICAL DESIGNED BY:

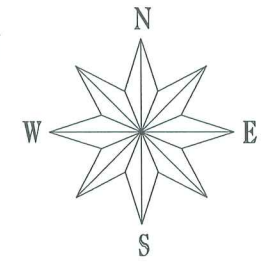


#### INDEX OF SHEETS

SHEET NO.	TITLE
1	DETAILS
DI-D2	ELECTRICAL PLAN
E1	SIDEWALK PLAN AND PROFILE
P1	LANDSCAPING PLAN
L1	UTILITY PLAN
C400	

### 801 E. WASHINGTON AVENUE - THE COSMOS

CITY PROJECT NO. 11521  
CITY CONTRACT NO. 7875  
MUNIS NO. 11521

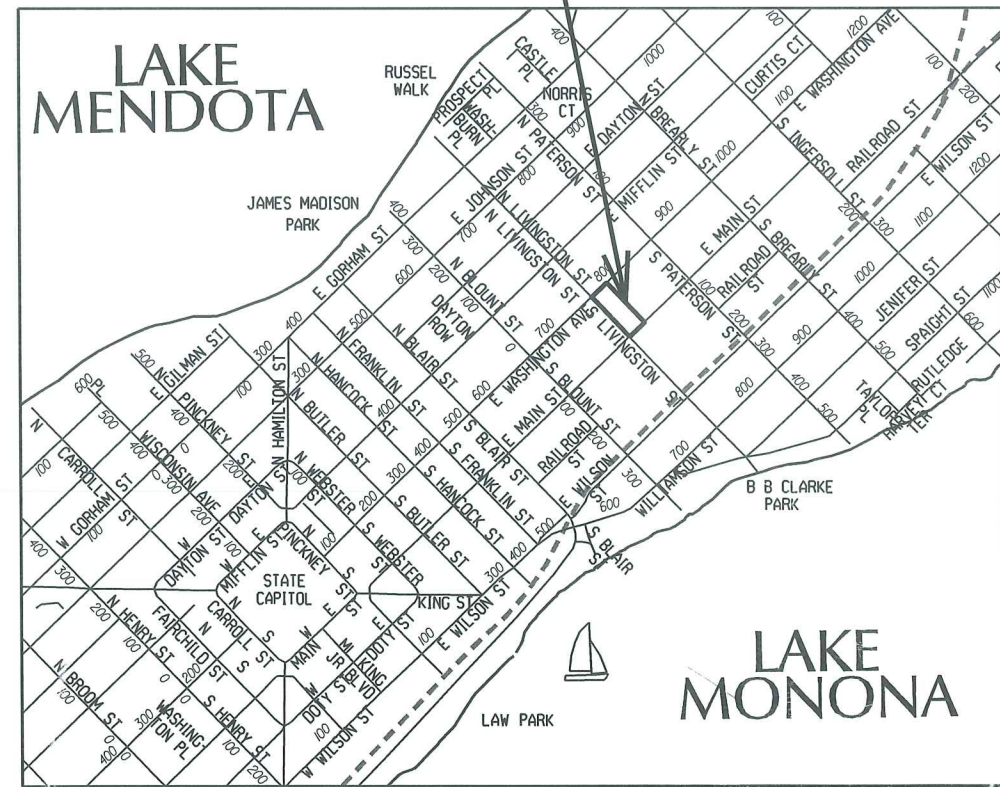


## CONSTRUCTION PROJECT LOCATION

CONVENTIONAL SIGNS

FIELD VERIFY ALL UTILITY LOCATIONS

- GAS — G —
- STORM SEWER — ST —
- SANITARY SEWER — SAN —
- WATER — W —
- OVERHEAD ELECTRIC — OH —
- POWER POLE —
- ADA COMPLIANT RAMP W/ DETECTABLE WARNING FIELD —
- COMBUSTIBLE FLUIDS —



PLOT SCALE:

PLOT NAME:

REV. DATE:

ORIGINATOR: CITY OF MADISON, STREETS DIVISION

EXISTING STREET TREES SHALL BE PROTECTED. CONTRACTOR SHALL INSTALL TREE PROTECTION FENCING IN THE AREA BETWEEN THE CURB AND SIDEWALK AND EXTEND IT AT LEAST 5 FEET FROM BOTH SIDES OF THE TREE ALONG THE LENGTH OF THE TERRACE. NO EXCAVATION IS PERMITTED WITHIN 5 FEET OF THE OUTSIDE EDGE OF A TREE TRUNK. IF EXCAVATION WITHIN 5 FEET OF ANY TREE IS NECESSARY, CONTRACTOR SHALL CONTACT CITY FORESTRY (266-4816) 48 HOURS PRIOR TO EXCAVATION TO ASSESS THE IMPACT TO THE TREE AND ROOT SYSTEM. TREE PRUNING SHALL BE COORDINATED WITH CITY FORESTRY PRIOR TO THE START OF CONSTRUCTION. TREE PROTECTION SPECIFICATIONS CAN BE FOUND IN SECTION 107.13 OF CITY OF MADISON STANDARD SPECIFICATIONS FOR PUBLIC WORKS CONSTRUCTION  
-[HTTP://WWW.CITYOFMADISON.COM/BUSINESS/PW/DOCUMENTS/STDSPESCS2013/PART1.PDF](http://www.cityofmadison.com/business/pw/documents/stdspecs2013/part1.pdf)

CONTRACTOR SHALL CONTACT CITY FORESTRY BRAD HOFMANN BHOFMANN@CITYOFMADISON.COM OR 266-4816 AT LEAST ONE WEEK PRIOR TO PLANTING TO SCHEDULE INSPECTING THE NURSERY STOCK AND REVIEW PLANTING SPECIFICATIONS WITH THE LANDSCAPER.

ANY TREE REMOVALS THAT ARE REQUIRED FOR CONSTRUCTION WILL REQUIRE AT LEAST A 72 HOUR WAIT PERIOD BEFORE A TREE REMOVAL PERMIT CAN BE ISSUED BY FORESTRY, TO NOTIFY THE ALDER OF THE CHANGE IN THE TREE PLAN.

CONTRACTOR/DEVELOPER SHALL SUBMIT A TRAFFIC CONTROL PLAN TO CITY TRAFFIC ENGINEERING AT LEAST 10 WORKING DAYS PRIOR TO THE START OF WORK. WORK WITHIN THE RIGHT-OF-WAY SHALL NOT BEGIN UNTIL THE TRAFFIC CONTROL PLAN IS APPROVED.

ANY PAVEMENT MARKINGS THAT ARE REMOVED OR DAMAGED SHALL BE REPLACED BY THE DEVELOPER/CONTRACTOR AS DIRECTED BY CITY TRAFFIC ENGINEERING.

ALL CURB & PAVEMENT WITHIN THE SOUTH LIVINGSTON ROW TO BE BY CITY PUBLIC PROJECT NUMBER 11599. THIS ALSO INCLUDES THE CURB BUMPOUT AND PAVEMENT WORK THAT TERMINATES ON E. MAIN ST. AT STA 18+42.

FURTHER DOWN E. MAIN ST., THE CURB FROM STA 18+90 TO STA 19+75 TO BE COMPLETED BY CITY PRIVATE PROJECT NO. 11521

SEVERAL CONSTRUCTION PROJECTS ARE TAKING PLACE AT THE SAME TIME ADJACENT TO PROJECT NO. 11521:

PROJECT NAME	PROJECT NO.	LOCATION RELATIVE TO 11521
S. LIVINGSTON ST. RECONSTRUCTION	CITY PUBLIC PROJECT NO. 11599	ADJACENT CURB & PAVEMENT ON S. LIVINGSTON
819 E. WASHINGTON AVE SPARK PROJECT	CITY PRIVATE PROJECT NO. 11520	NEIGHBORING PROPERTY TO THE NORTHEAST
CAPITAL EAST GARAGE	CITY PUBLIC PROJECT NO. 1627	ACROSS E. MAIN ST. ACROSS S. LIVINGSTON AND
MG&E ROW & SITE WORK		OPPOSITE CORNER FROM S. LIVINGSTON ST. & E. MAIN ST.

COORDINATE WORK WITH NEIGHBORING CONSTRUCTION PROJECTS TO AVOID CONFLICTS.

ALL PAVEMENT WITHIN THE EAST MAIN STREET RIGHT-OF-WAY SHALL BE TYPE C PAVEMENT.

ALL PAVEMENT WITHIN THE EAST WASHINGTON AVENUE RIGHT-OF-WAY SHALL BE 10" DOWELED CONCRETE PAVEMENT.

ALL GUTTERS SHALL DRAIN WITH A MINIMUM GRADES OF 0.5% TOWARD STORM SEWER INLETS.

THE CROSS SLOPE OF SIDEWALKS AND BARRIER FREE SIDEWALK CURB RAMPS SHALL BE 1.5%. THE LONGITUDINAL GRADE OF BARRIER FREE SIDEWALK CURB RAMPS SHALL NOT EXCEED 8.33%. ALL SIDEWALK RAMPS SHALL BE CONSTRUCTED ACCORDING TO S.D.D. 3.03. AT ALL OTHER LOCATIONS THE LONGITUDINAL GRADE OF SIDEWALKS SHALL NOT EXCEED 5.0 % OR THE ADJACENT STREET GRADE WHICHEVER IS GREATER NOR BE LESS THAN 0.4% AND SHALL DRAIN TOWARD STORM SEWER INLETS. SIDE SLOPES WITHIN TEN FEET OF A PUBLIC SIDEWALK SHALL NOT EXCEED 4.00:1. ALL SIDEWALK AND SIDEWALK RAMP ELEVATIONS AND GRADES SHALL BE FIELD VERIFIED AND SET TO COMPLY WITH THE CITY OF MADISON STANDARD SPECIFICATIONS AND THE A.D.A. GUIDELINES.

POWER POLES AND OTHER OBSTRUCTIONS SHALL BE MOVED TO PROVIDE 2 FEET MINIMUM OF CLEAR DISTANCE FROM ANY FACE OF CURB OR EDGE OF SIDEWALK.

THERE MAY BE EXISTING UTILITIES OR OTHER FEATURES WHICH ARE EITHER NOT SHOWN OR SHOWN INCORRECTLY ON THIS PLAN. IT IS THE RESPONSIBILITY OF THE DEVELOPER TO LOCATE AND IDENTIFY ALL UTILITIES AND TOPOGRAPHY WHICH MAY AFFECT THE CONSTRUCTION OF THESE IMPROVEMENTS.

ALL PERMANENT SIGNING AND POSTING WILL BE DETERMINED AND PROVIDED BY THE TRAFFIC ENGINEERING DIVISION, FOLLOWING CONSTRUCTION OF THESE IMPROVEMENTS.

THE DEVELOPER SHALL PROVIDE, INSTALL AND MAINTAIN ALL STREET END BARRICADES, SIGNING AND TRAFFIC CONTROL, AS REQUIRED BY THE CITY TRAFFIC ENGINEER.

PAVEMENT SAWCUTS SHALL BE AS DIRECTED BY THE CITY CONSTRUCTION ENGINEER. SAWCUTS SHOWN ON THE PLAN ARE APPROXIMATE.

DAMAGE TO ANY EXISTING CURB, PAVEMENT, SIDEWALK, ETC. THAT IS TO REMAIN SHALL BE REPAIRED BY THE DEVELOPER/CONTRACTOR AS DIRECTED BY THE ENGINEER.

DEVELOPER/CONTRACTOR SHALL COORDINATE WITH ALL UTILITY COMPANIES TO ADJUST STRUCTURES, MANHOLES, HANDHOLES, ETC. AS NEEDED TO MATCH THE GRADE OF THE NEW PAVEMENT.

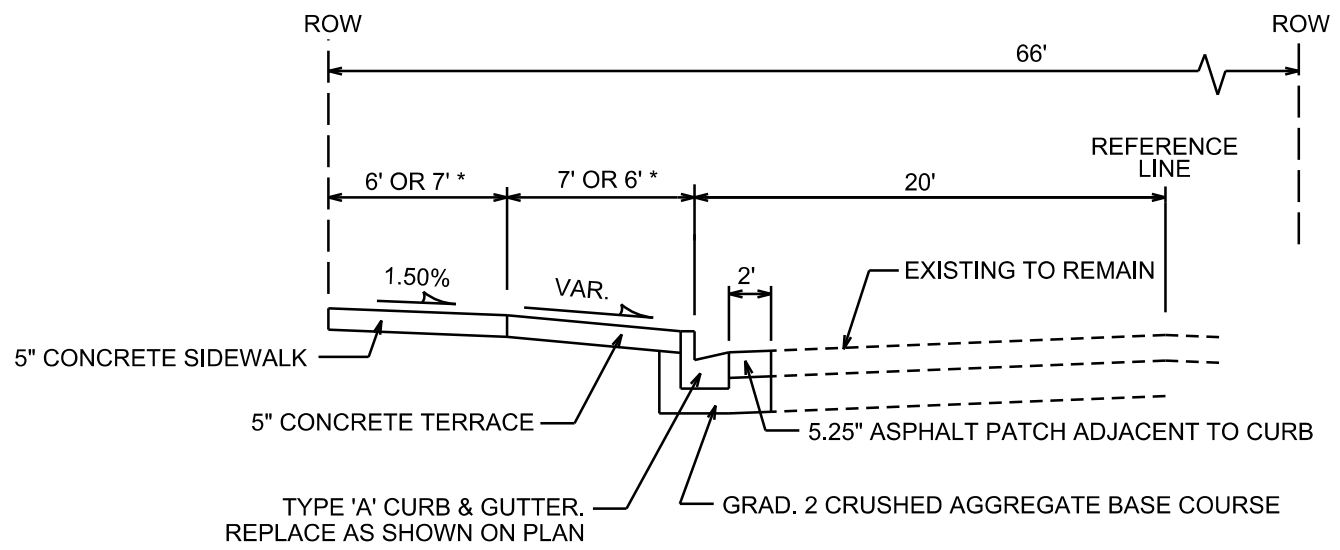
ANY WORK SHOWN ON THIS PLAN THAT IS OUTSIDE OF THE RIGHT-OF-WAY OR BEYOND THE LIMITS OF THIS PROJECT SHALL BE CONSIDERED APPROXIMATE AND NOT FOR CONSTRUCTION.

PLOT SCALE: \_\_\_\_\_

PLOT NAME: \_\_\_\_\_

REV. DATE: \_\_\_\_\_

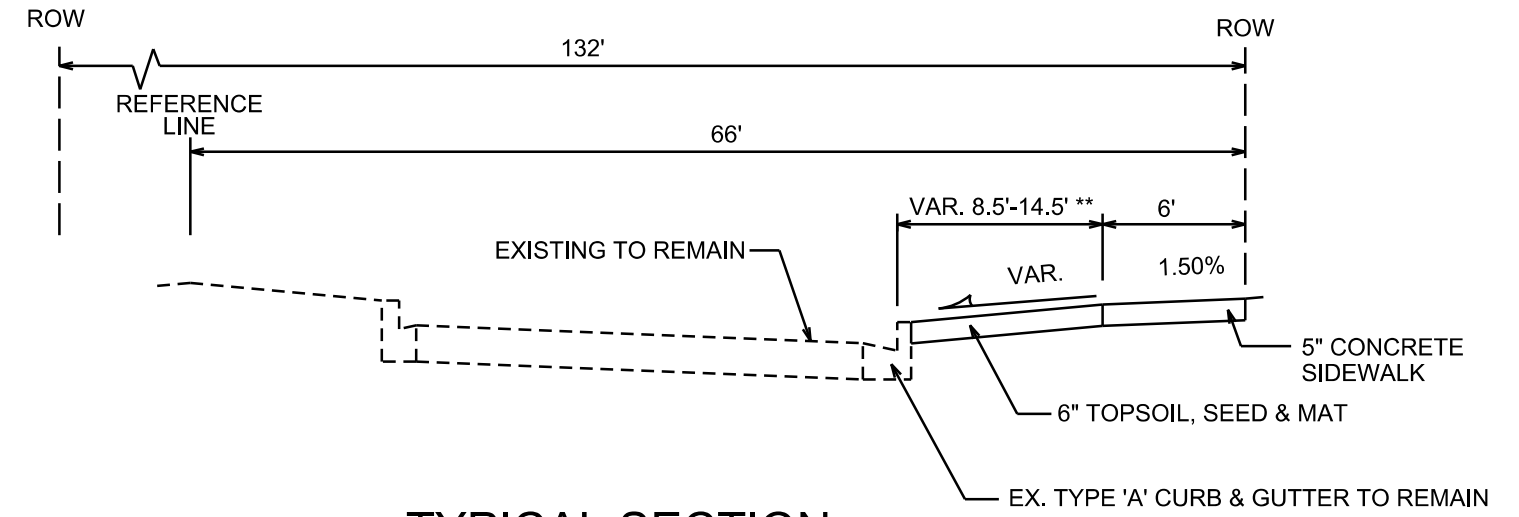
ORIGINATOR: CITY OF MADISON, STREETS DIVISION



**TYPICAL SECTION**

E. MAIN ST.  
FROM STA 18+20 TO STA 19+76  
NOT TO SCALE

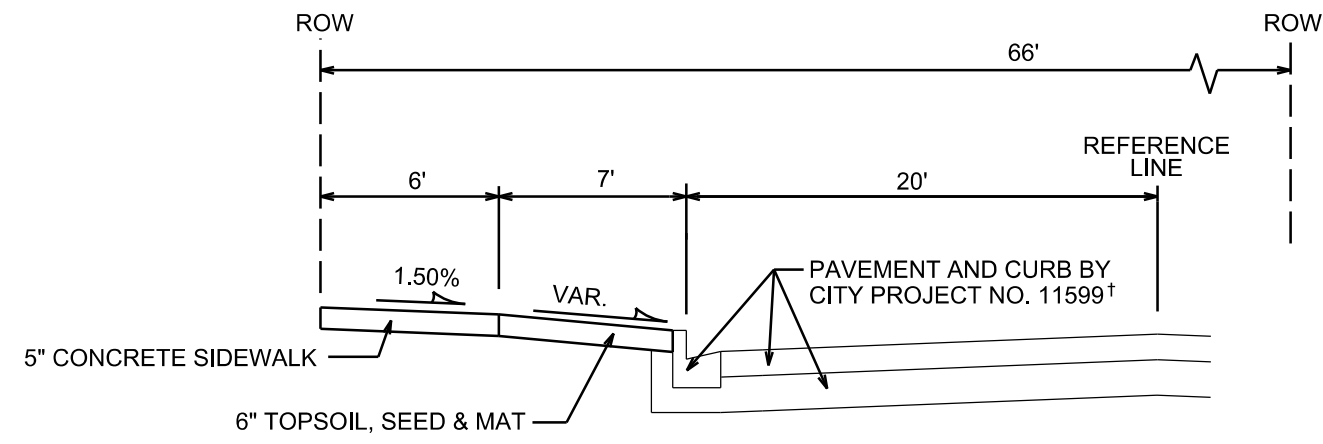
\* 7' SIDEWALK / 6' TERRACE FROM STA 18+20 TO 18+55  
6' SIDEWALK / 7' TERRACE FROM STA 18+55 TO 19+76



**TYPICAL SECTION**

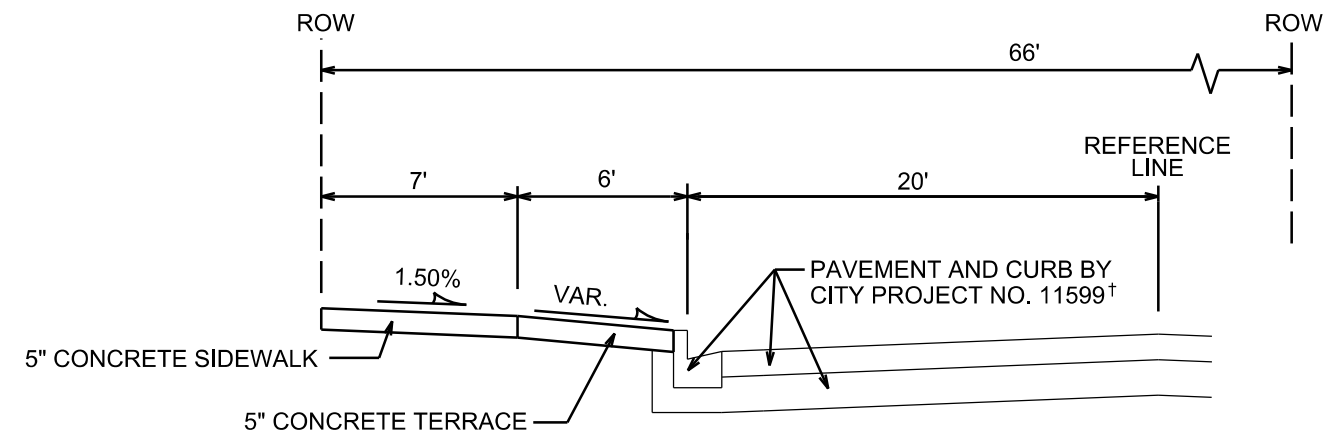
E. WASHINGTON AVE.  
FROM STA 241+41 TO 242+67  
NOT TO SCALE

\*\* 14.5' TERRACE FROM STA 241+41 TO 241+91  
VAR. FROM STA 241+91 TO 242+19  
8.5' FROM STA 241+19 TO 242+67



**TYPICAL SECTION**

S. LIVINGSTON ST.  
FROM STA 118+63 TO STA 120+70  
NOT TO SCALE



**TYPICAL SECTION**

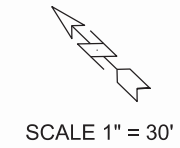
S. LIVINGSTON ST.  
FROM STA 120+70 TO STA 121+95  
NOT TO SCALE

† ALL CURB & PAVEMENT WITHIN THE SOUTH LIVINGSTON ROW TO BE BY CITY PUBLIC PROJECT NUMBER 11599. THIS ALSO INCLUDES THE CURB BUMPOUT AND PAVEMENT WORK THAT TERMINATES ON E MAIN AT STA 18+42. SEE SHEET D1 FOR ADDITIONAL PROJECT COORDINATION INFORMATION.

FARTHER DOWN E. MAIN ST., THE CURB FROM STA 18+90 TO STA 19+75 TO BE COMPLETED BY PROJECT NO. 11521

PLOT SCALE: \_\_\_\_\_  
PLOT NAME: \_\_\_\_\_  
REV. DATE: \_\_\_\_\_  
ORIGINATOR: CITY OF MADISON, STREETS DIVISION

ELECTRICAL SHEET



GENERAL ELECTRICAL NOTES:

1. ALL LOCATIONS ARE APPROXIMATE. THE TRAFFIC ENGINEER SHALL APPROVE FINAL LOCATIONS INCLUDING SETBACK IN THE FIELD. AFTER CONTRACTOR SURVEYS STAKING, THE CONTRACTOR SHALL NOTIFY BRIAN SMITH (261-9625) CITY TRAFFIC ENGINEERING, AT LEAST 24-HOURS IN ADVANCE OF NEEDING BASE LOCATIONS MARKED.
2. THE CONTRACTOR SHALL DO ALL WORK IN ACCORDANCE WITH CITY OF MADISON STANDARD SPECIFICATIONS FOR PUBLIC WORKS CONSTRUCTION 2017 EDITION AND ALL ADDENDUMS THERETO. ALL CONDUIT SHALL BE PVC SCHEDULE 80 UNDER PAVEMENT OR SCHEDULE 40 OTHERWISE. PULL WIRE REQUIRED AS PER STANDARD SPECIFICATIONS.
3. THE CONTRACTOR SHALL CALL MIKE BENZSCHAWEL (266-4767) AT THE TRAFFIC ENGINEERING SHOP AT LEAST 24-HOURS IN ADVANCE OF POURING BASES, INSTALLING ELECTRICAL HANDHOLES OR BURYING CONDUIT TO ARRANGE FOR INSPECTION.
4. ALL EXISTING STREET LIGHT, TRAFFIC SIGNALS AND CONDUITS ARE TO REMAIN UNLESS AND UNTIL AUTHORIZED TO REMOVE BY TRAFFIC ENGINEERING.
5. THE FOLLOWING CITY FURNISHED MATERIALS ARE TO BE PICKED UP AT THE TRAFFIC TRAFFIC OPERATION SHOP, 1120 SAYLE STREET. NOTIFY DENNIS ROWE AT 266-9034 TWENTY FOUR (24) HOURS PRIOR TO PICKING UP THE MATERIAL.

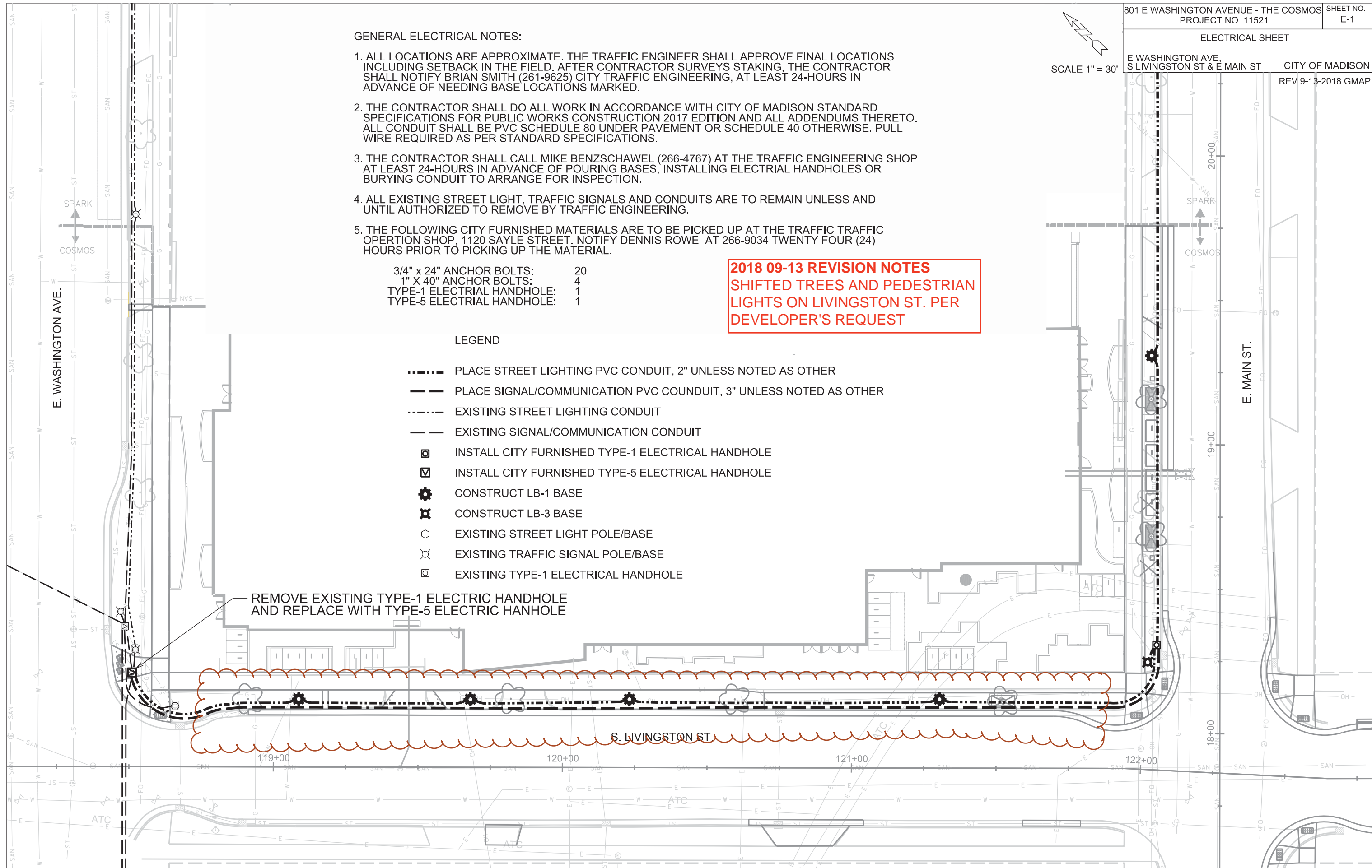
- 3/4" x 24" ANCHOR BOLTS: 20
- 1" X 40" ANCHOR BOLTS: 4
- TYPE-1 ELECTRICAL HANDHOLE: 1
- TYPE-5 ELECTRICAL HANDHOLE: 1

**2018 09-13 REVISION NOTES**  
 SHIFTED TREES AND PEDESTRIAN LIGHTS ON LIVINGSTON ST. PER DEVELOPER'S REQUEST

LEGEND

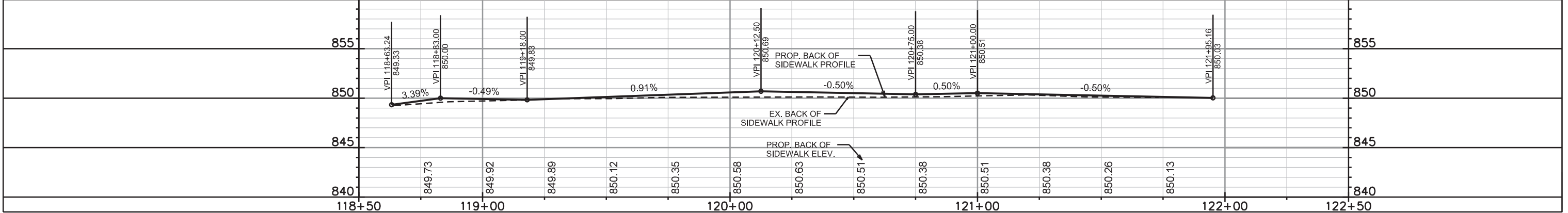
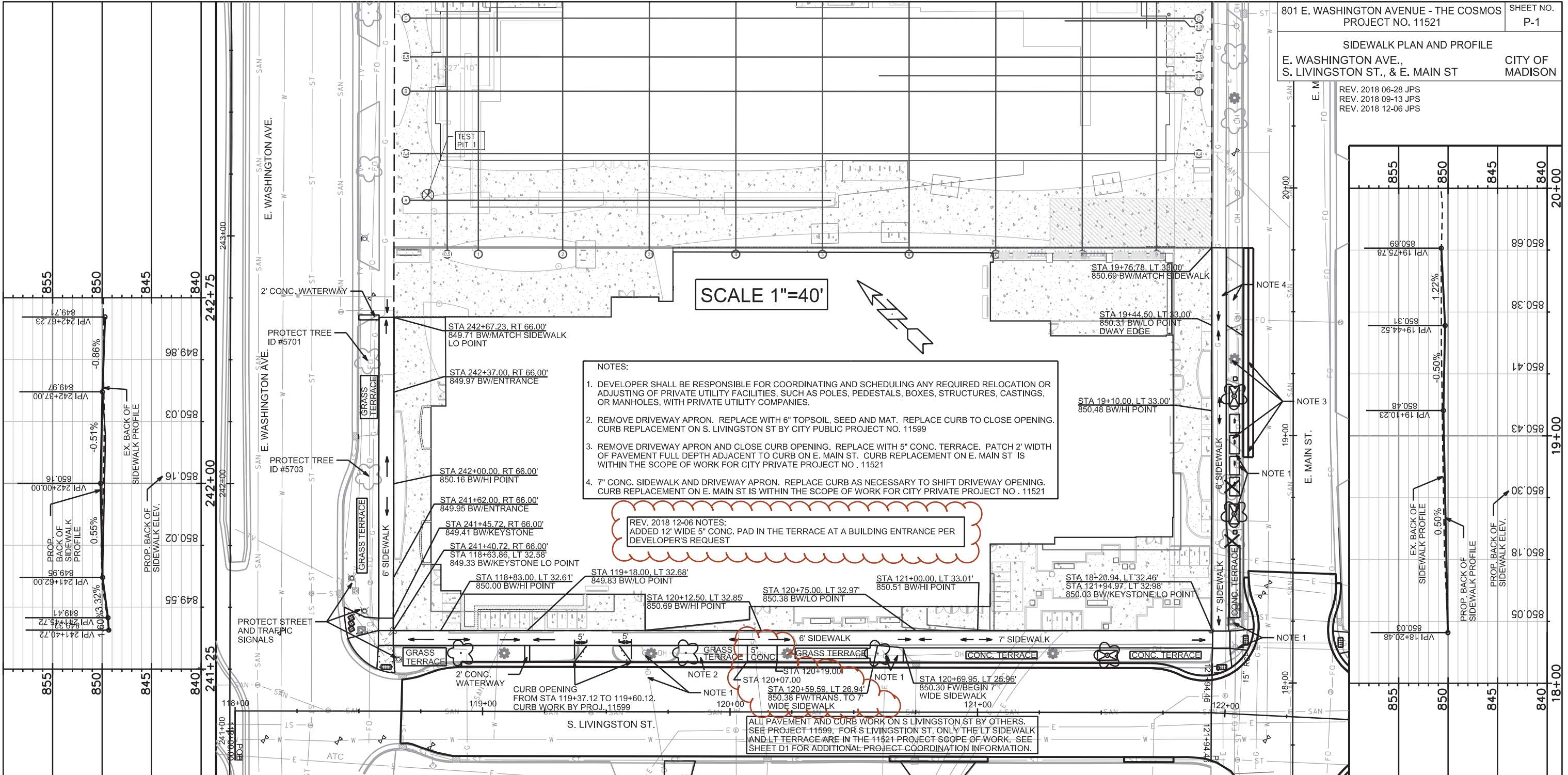
- PLACE STREET LIGHTING PVC CONDUIT, 2" UNLESS NOTED AS OTHER
- PLACE SIGNAL/COMMUNICATION PVC CONDUIT, 3" UNLESS NOTED AS OTHER
- EXISTING STREET LIGHTING CONDUIT
- EXISTING SIGNAL/COMMUNICATION CONDUIT
- ☐ INSTALL CITY FURNISHED TYPE-1 ELECTRICAL HANDHOLE
- ☑ INSTALL CITY FURNISHED TYPE-5 ELECTRICAL HANDHOLE
- ⚙ CONSTRUCT LB-1 BASE
- ⊗ CONSTRUCT LB-3 BASE
- EXISTING STREET LIGHT POLE/BASE
- ⊗ EXISTING TRAFFIC SIGNAL POLE/BASE
- ⊗ EXISTING TYPE-1 ELECTRICAL HANDHOLE

REMOVE EXISTING TYPE-1 ELECTRIC HANDHOLE AND REPLACE WITH TYPE-5 ELECTRIC HANHOLE



PLOT SCALE: PLOT NAME: REV. DATE: ORIGINATOR: CITY OF MADISON, TRAFFIC ENG. DIV.

REV. 2018 06-28 JPS  
 REV. 2018 09-13 JPS  
 REV. 2018 12-06 JPS



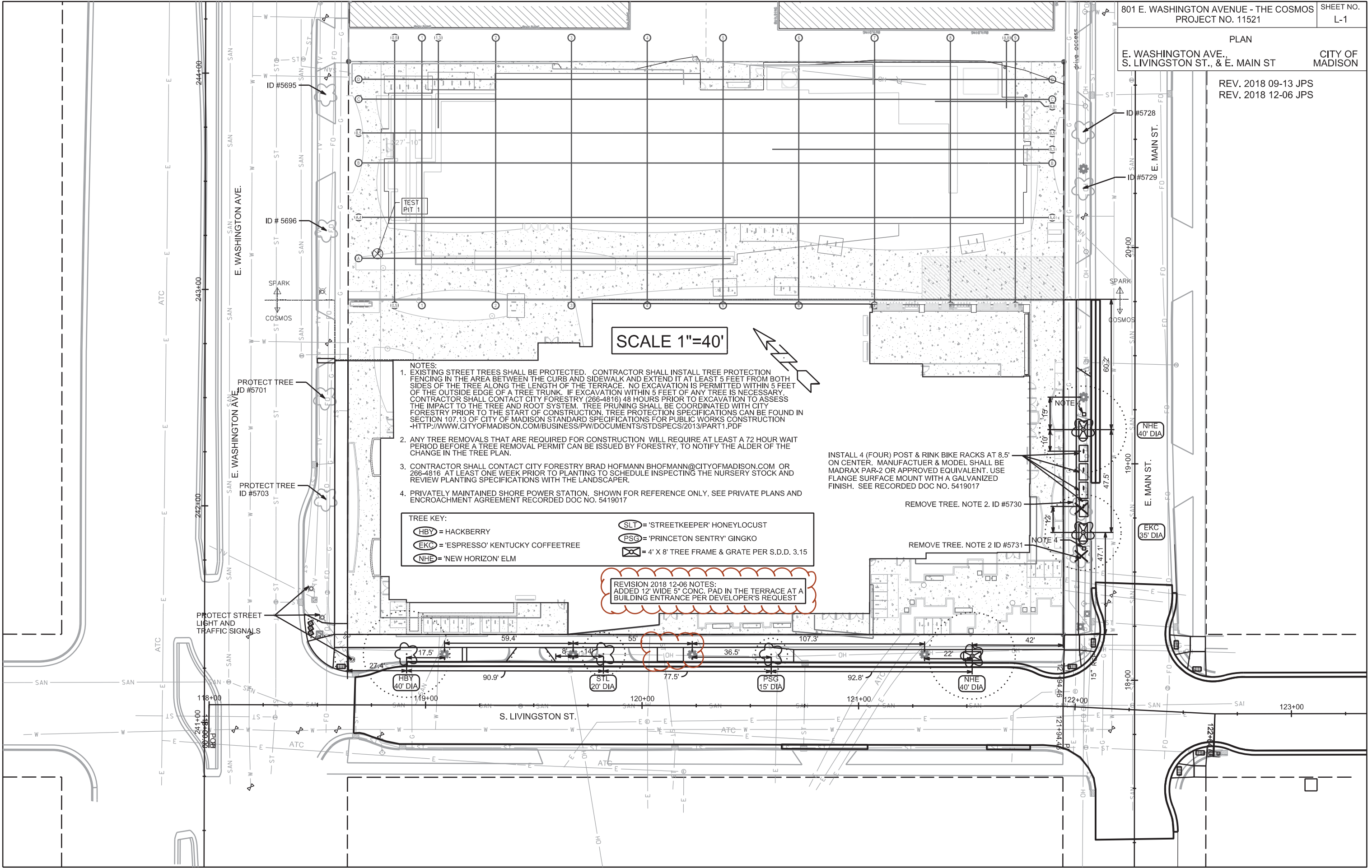
PLOT SCALE: \_\_\_\_\_

PLOT NAME: \_\_\_\_\_

REV. DATE: \_\_\_\_\_

ORIGINATOR: CITY OF MADISON, STREETS DIVISION

REV. 2018 09-13 JPS  
REV. 2018 12-06 JPS

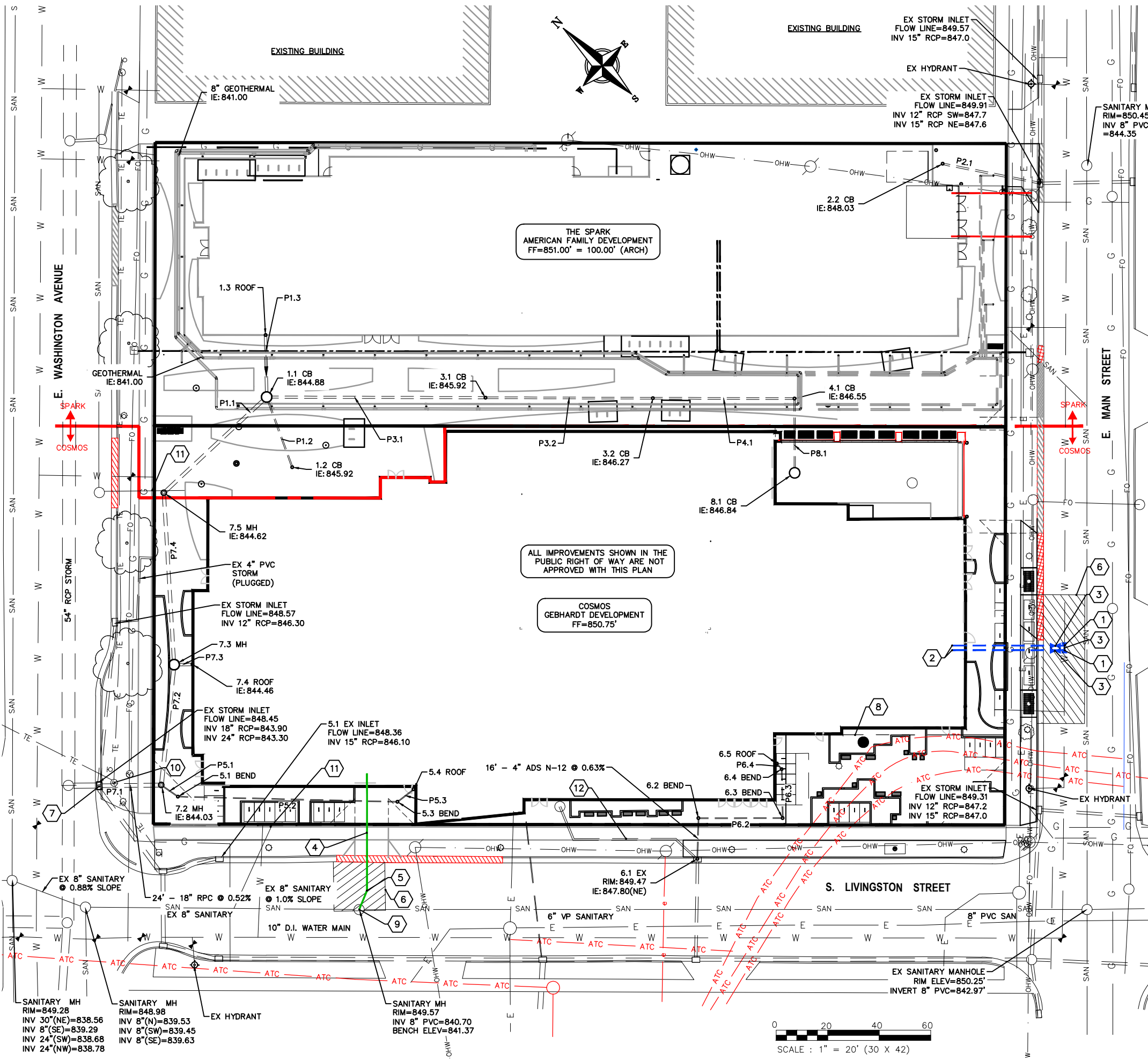


- NOTES:**
- EXISTING STREET TREES SHALL BE PROTECTED. CONTRACTOR SHALL INSTALL TREE PROTECTION FENCING IN THE AREA BETWEEN THE CURB AND SIDEWALK AND EXTEND IT AT LEAST 5 FEET FROM BOTH SIDES OF THE TREE ALONG THE LENGTH OF THE TERRACE. NO EXCAVATION IS PERMITTED WITHIN 5 FEET OF THE OUTSIDE EDGE OF A TREE TRUNK. IF EXCAVATION WITHIN 5 FEET OF ANY TREE IS NECESSARY, CONTRACTOR SHALL CONTACT CITY FORESTRY (266-4816) 48 HOURS PRIOR TO EXCAVATION TO ASSESS THE IMPACT TO THE TREE AND ROOT SYSTEM. TREE PRUNING SHALL BE COORDINATED WITH CITY FORESTRY PRIOR TO THE START OF CONSTRUCTION. TREE PROTECTION SPECIFICATIONS CAN BE FOUND IN SECTION 107.13 OF CITY OF MADISON STANDARD SPECIFICATIONS FOR PUBLIC WORKS CONSTRUCTION -[HTTP://WWW.CITYOFMADISON.COM/BUSINESS/PW/DOCUMENTS/STDSPECS/2013/PART1.PDF](http://www.cityofmadison.com/business/pw/documents/stdspecs/2013/part1.pdf)
  - ANY TREE REMOVALS THAT ARE REQUIRED FOR CONSTRUCTION WILL REQUIRE AT LEAST A 72 HOUR WAIT PERIOD BEFORE A TREE REMOVAL PERMIT CAN BE ISSUED BY FORESTRY, TO NOTIFY THE ALDER OF THE CHANGE IN THE TREE PLAN.
  - CONTRACTOR SHALL CONTACT CITY FORESTRY BRAD HOFMANN BHOFMANN@CITYOFMADISON.COM OR 266-4816 AT LEAST ONE WEEK PRIOR TO PLANTING TO SCHEDULE INSPECTING THE NURSERY STOCK AND REVIEW PLANTING SPECIFICATIONS WITH THE LANDSCAPER.
  - PRIVATELY MAINTAINED SHORE POWER STATION. SHOWN FOR REFERENCE ONLY, SEE PRIVATE PLANS AND ENCROACHMENT AGREEMENT RECORDED DOC NO. 5419017

**TREE KEY:**

(HBY) = HACKBERRY	(SLT) = 'STREETKEEPER' HONEYLOCUST
(EKC) = 'ESPRESSO' KENTUCKY COFFEETREE	(PSG) = 'PRINCETON SENTRY' GINKGO
(NHE) = 'NEW HORIZON' ELM	(X) = 4' X 8' TREE FRAME & GRATE PER S.D.D. 3.15

**REVISION 2018 12-06 NOTES:**  
ADDED 12" WIDE 5" CONC. PAD IN THE TERRACE AT A BUILDING ENTRANCE PER DEVELOPER'S REQUEST



- ### PLAN KEY
- 1 CONNECT TO EXISTING WATER MAIN WITH 8"x8"x8" CUT-IN TEE. COORDINATE INSTALLATION WITH MADISON WATER UTILITY
  - 2 8" WATER SERVICE
  - 3 8" VALVE
  - 4 8" SANITARY LATERAL @ 0.52% MIN. SLOPE
  - 5 22.5" BEND
  - 6 UTILITY PATCH PER CITY REQUIREMENTS
  - 7 CONNECT TO EXISTING STORM SEWER INLET PER CITY STANDARDS
  - 8 EXCEPTION 10: 35'x85' PERPETUAL RIGHT AND EASEMENT FOR UNDERGROUND ELECTRIC TRANSMISSION AND DISTRIBUTION IN DOC. NO. 2070527.
  - 9 CONNECT TO EX SANITARY MANHOLE PER CITY REQUIREMENTS, INVERT=841.40
  - 10 INSTALL STORM UNDER TRAFFIC ENGINEERING VAULT
  - 11 EXISTING SANITARY LATERAL PLUGGED AT PROPERTY LINE
  - 12 REMOVE EXISTING STORM SEWER



**STRANG**  
6411 Mineral Point Road  
Madison, WI 53705  
(608) 276 - 9200

**PROFESSIONAL ENGINEERING LLC**  
818 N Meadowbrook Ln  
Waunakee, WI 53597  
(608) 849-9378

PROJECT INFORMATION  
**THE COSMOS**  
811 E WASHINGTON AVE  
MADISON, WI



ISSUANCE AND REVISIONS

City Plan

#	DATE	DESCRIPTION

SHEET INFORMATION

PROJECT MANAGER	RJ
PROJECT NUMBER	1249
DATE	8/1/17

UTILITY PLAN  
**C400**

