

Madison, Wisconsin

# CITY OF MADISON

## CITY ENGINEERING DIVISION

### DEPARTMENT OF PUBLIC WORKS

## PLAN OF PROPOSED IMPROVEMENT

PUBLIC IMPROVEMENT PROJECT APPROVED

JULY 11, 2017

BY THE COMMON COUNCIL OF MADISON, WISCONSIN

PUBLIC IMPROVEMENT DESIGN APPROVED BY:

*[Signature]* 10/6/17  
City Engineer Date

STORM SEWER LATERALS ONLY:

Lateral by developer.

*[Signature]*  
10/6/2017

SANITARY SEWER LATERALS ONLY:

Lateral by developer.

*[Signature]*  
10/5/17

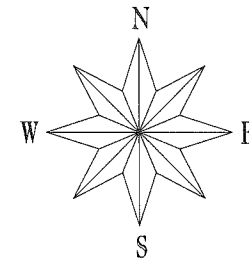
INDEX OF SHEETS

SHEET NO.	TITLE
1	
U-1	UTILITY PLAN

4601 FREY STREET

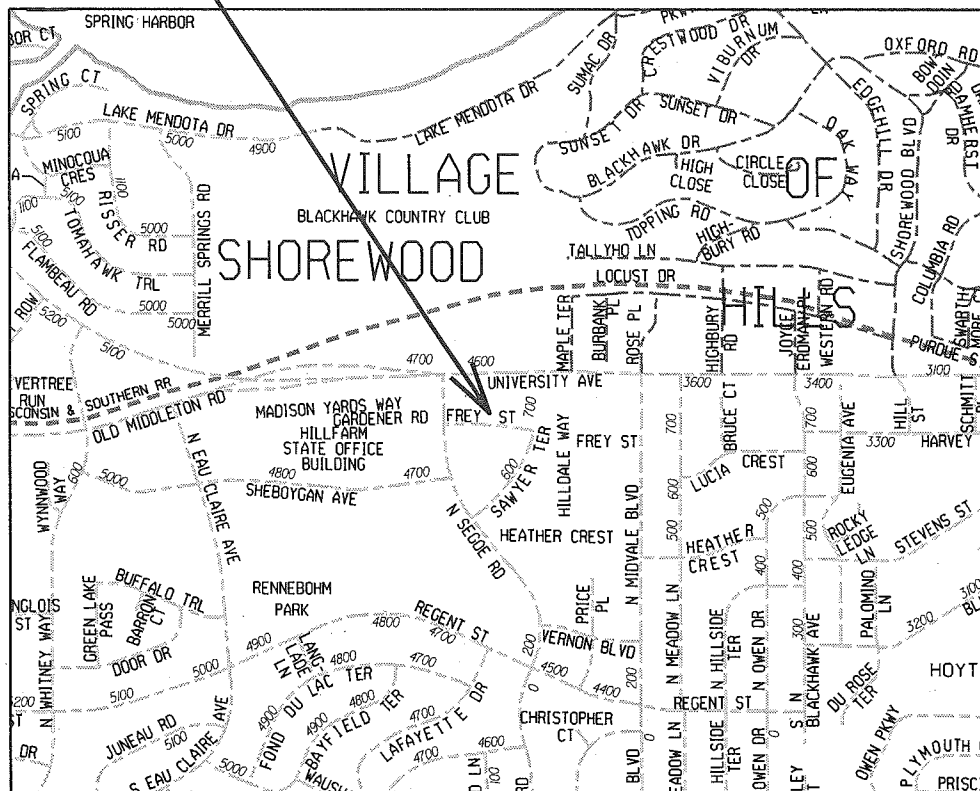
UTILITIES ONLY

CITY PROJECT NO. 11651  
CITY CONTRACT NO. 7943  
MUNIS NO. 11651



CONSTRUCTION PROJECT LOCATION

CONVENTIONAL SIGNS	
FIELD VERIFY ALL UTILITY LOCATIONS	
GAS	— G —
STORM SEWER	— ST —
SANITARY SEWER	— SAN —
WATER	— W —
OVERHEAD ELECTRIC	— OH —
POWER POLE	⊕
ADA COMPLIANT RAMP W/ DETECTABLE WARNING FIELD	▤
COMBUSTIBLE FLUIDS	☀



PLOT SCALE: PLOT NAME: REV. DATE: ORIGINATOR: CITY OF MADISON, STREETS DIVISION

REV. 2017 10-05  
BY AJZ

FREY STREET

EXISTING  
AS 3650-036  
INSTALL NEW  
R-1879-B7L GRATE  
TAP AT EI= 906.00

15" HDPE STM  
@ 1.78%

SEE CRANE LOCATION  
AND SLEEVE PLAN  
FOR SANITARY SEWER  
ON APPROVED  
SOIL RETENTION PLAN

4601

8" PVC SAN LATERAL  
INSTALL ELECTRONIC  
MARKER BELL ABOVE  
LATERAL AT PROPERTY  
LINE

NEW 4' DIA.  
SANITARY MANHOLE  
W/ R-1550  
RIM= 910.19  
EI= 901.83 (N)  
EI = 901.97 (S) TAP  
EI = 901.97 (W)

CONTRACTOR IS RESPONSIBLE FOR  
TELEVISIONING EXISTING SANITARY SEWER  
BEFORE AND AFTER CONSTRUCTION AND  
PROVIDE COPIES TO CITY OF MADISON ENGINEERING.  
CONTRACTOR IS RESPONSIBLE FOR ANY DAMAGE TO  
EXISTING SANITARY SEWER.

INSTALL 8'X4'2" THICK INSULATION  
BOARDS OVER 6" WATER SERVICES  
FROM VALVES TO BUILDING

6" GATE VALVE  
(INSTALL 3' OFF  
FACE OF CURB)

12" PVC STM @ 1.93%

INSTALL NEW  
H INLET  
W/ R-3067-7004-VB  
TC= 914.05  
EI = 908.15 (NE)  
EI = 908.65 (NW)  
EI = 908.15 (SW)

6"X6" TEE

6" GATE VALVE  
(INSTALL 3' OFF  
FACE OF CURB)

6" GATE VALVE

EXISTING  
IN 3650-037  
TC= 914.90  
EI = 909.27 (NE)  
EI = 910.68 (NW)  
EI = 910.14 (SE)

NOTE:  
FUTURE SAWYER TERRACE WATERMAIN  
REPLACEMENT LOCATION IS UNKNOWN  
AT THIS TIME.  
6" GATE VALVES FOR WATER SERVICE  
LINES SHALL BE INSTALLED 3' FROM  
THE PROPOSED CURB TO GIVE ROOM  
FOR FUTURE WATERMAIN IF NEEDED.



SCALE:  
1" = 30'

PLOT SCALE:

PLOT NAME:

REV. DATE:

ORIGINATOR: CITY OF MADISON, STREETS DIVISION