

Madison, Wisconsin

# CITY OF MADISON

## CITY ENGINEERING DIVISION

### DEPARTMENT OF PUBLIC WORKS

## PLAN OF PROPOSED IMPROVEMENT

PUBLIC IMPROVEMENT PROJECT APPROVED

SEPTEMBER 17, 2013

BY THE COMMON COUNCIL OF MADISON, WISCONSIN

PUBLIC IMPROVEMENT DESIGN APPROVED BY:

*[Signature]* 9/23/14  
City Engineer Date

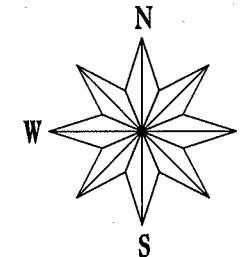
INDEX OF SHEETS

SHEET NO.	TITLE
1	DETAILS
DI-D4	STATE STREET SIDEWALK PLAN & PROFILE
P1	FRANCES STREET SIDEWALK PLAN & PROFILE
P2	GILMAN STREET SIDEWALK PLAN & PROFILE
P3	FRANCES STREET MALL GRADING PLAN
P4	ELECTRICAL PLAN
E1	WATERING SYSTEM DETAILS
WI-W5	RELEVANT DETAILS FROM PRIOR RECONSTRUCT
AI-A5	

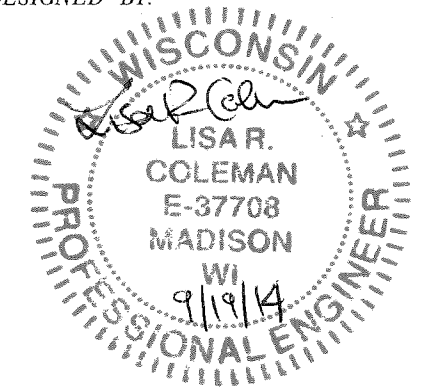
529-557 STATE STREET, 431-441 N. FRANCES STREET,  
AND 432 W. GILMAN STREET (THE HUB)

CITY PROJECT NO. 53B2363

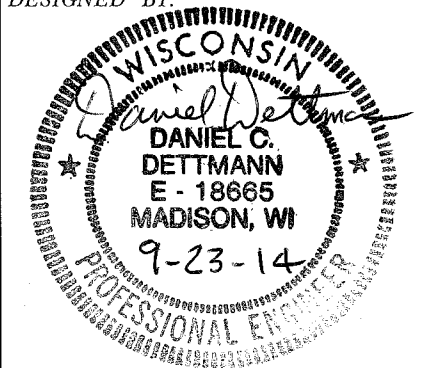
CITY CONTRACT NO. 2363



SIDEWALK DESIGNED BY:



ELECTRICAL DESIGNED BY:



CONVENTIONAL SIGNS

FIELD VERIFY ALL UTILITY LOCATIONS

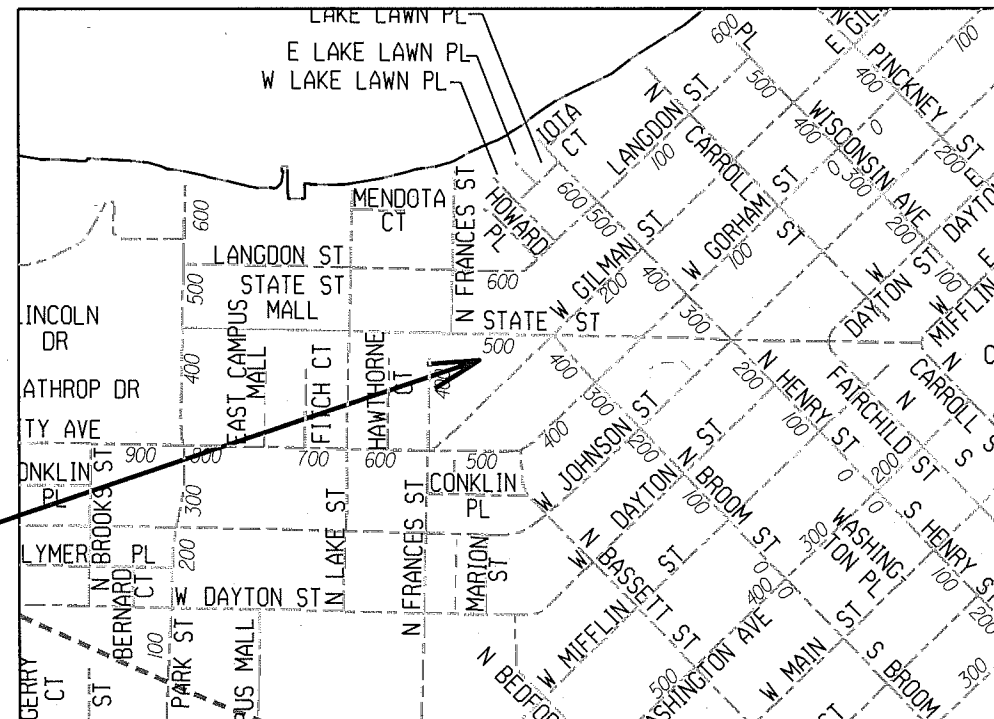
GAS	— G —
STORM SEWER	— ST —
SANITARY SEWER	— SAN —
WATER	— W —
OVERHEAD ELECTRIC	— OH —
POWER POLE	⊕
ADA COMPLIANT RAMP W/ DETECTABLE WARNING FIELD	
COMBUSTIBLE FLUIDS	

## CONSTRUCTION PROJECT LOCATION

NOTES:

ALL GUTTERS SHALL DRAIN WITH A MINIMUM GRADE OF 0.50% TOWARD STORM SEWER INLETS.

SIDEWALK RAMPS AND CURB THRU SIDEWALK RAMPS SHALL HAVE A MAXIMUM SLOPE OF 1" PER 12". SIDEWALK AND CURB RAMPS SHALL BE CONSTRUCTED WITH A SIDE SLOPE OF 2.00%. SIDEWALK SHALL HAVE A MINIMUM LONGITUDINAL SLOPE OF 0.50% AND A MAXIMUM LONGITUDINAL SLOPE OF 5.00% EXCEPT WHERE STREET GRADES EXCEED 5.00%.



PLOT SCALE:

PLOT NAME:

REV. DATE:

ORIGINATOR: CITY OF MADISON, STREETS DIVISION

THE LOCATION AND INFORMATION FOR PROPOSED NEW TREES, IN THE PUBLIC RIGHT OF WAY OR ON PUBLIC LANDS ARE APPROXIMATE AND ARE SHOWN FOR REFERENCE ONLY. THE LOCATIONS, SPECIFICATIONS AND PLANTING METHODS OF ALL PROPOSED NEW OR REPLACEMENT TREES IN THE PUBLIC RIGHT OF WAY OR ON PUBLIC LANDS SHALL BE APPROVED BY THE CITY FORESTER PRIOR TO INSTALLATION.

NO TREES IN THE RIGHT OF WAY OR ON PUBLIC LANDS SHALL BE TRIMMED, PRUNED, REMOVED OR ADVERSELY AFFECTED IN ANY WAY UNTIL THE DEVELOPER HAS RECEIVED WRITTEN PERMISSION FROM THE CITY ENGINEER OR CITY FORESTER. SAID WRITTEN PERMISSION SHALL INCLUDE LANGUAGE INDICATING THAT SECTION 10.101 OF THE MADISON GENERAL ORDINANCES AND ADMINISTRATIVE PROCEDURE MEMORANDUM NO. 6-2, REFERING TO NOTIFICATION OF PROPERTY OCCUPANTS AND/OR OWNERS, HAS BEEN COMPLIED WITH.

THE DEVELOPER/CONTRACTOR SHALL CONTACT CITY FORESTRY (DEAN KAHL 266-4891 OR 266-4816) PRIOR TO EXCAVATING WITHIN 5 FT. OF AN EXISTING TREE SO THAT THEY MAY PROVIDE DIRECTION ON THE WORK. THE DEVELOPER/CONTRACTOR SHALL ALSO CONTACT CITY FORESTRY AT LEAST ONE WEEK PRIOR TO ANY TREE REMOVALS OR PRUNING TO OBTAIN A PERMIT FOR TREE REMOVAL OR PRUNING WITHIN THE RIGHT-OF-WAY.

FOR THE TREES ADJACENT TO THE PROJECT TO BE SAVED, CONTRACTOR SHALL INSTALL TREE PROTECTION FENCING AROUND THE PERIMETER OF THE TREE GRATE AREA (5 FT DIAMETER).

FOR TREES TO BE REMOVED, GRIND STUMPS TO A MINIMUM DEPTH OF 24 INCHES.

CONTRACTOR SHALL REPLACE TREES WITH REPLACEMENT SPECIES AS NOTED ON THE PLANS WITHIN THE TERRACES. ALL REPLACEMENT TREES SHALL BE 2.5" CALIPER B&B PLANTING STOCK. CONTRACTOR SHALL CONTACT DEAN KAHL WITH CITY FORESTRY (266-4891 OR 266-4816) AT LEAST ONE WEEK PRIOR TO PLANTING TO ALLOW FORESTRY TO SCHEDULE INSPECTION AND REVIEW PLANTING SPECIFICATIONS WITH THE LANDSCAPING CONTRACTOR.

THE DEVELOPER/CONTRACTOR SHALL SUBMIT A TRAFFIC CONTROL PLAN FOR REVIEW TO CITY TRAFFIC ENGINEERING AT LEAST 10 WORKING DAYS PRIOR TO WORK BEGINNING WITHIN THE RIGHT OF WAY. WORK SHALL NOT PROCEED IN THE RIGHT OF WAY UNTIL THE TRAFFIC CONTROL PLAN HAS BEEN APPROVED. THE TRAFFIC CONTROL PLAN MAY INCLUDE BUT IS NOT LIMITED TO: LANE CLOSURE RESTRICTIONS, PEAK HOUR WORKING RESTRICTIONS, ACCESS REQUIREMENTS, ETC. THE DEVELOPER/CONTRACTOR SHALL BE RESPONSIBLE FOR PHASING WORK AS NECESSARY TO MEET THE REQUIREMENTS OF THE APPROVED TRAFFIC CONTROL PLAN.

ALL PAVEMENT IN THE FRANCES STREET AND GILMAN STREET RIGHT OF WAY SHALL BE TYPE C PAVEMENT. PAVEMENT IN STATE STREET ROW IS 10" CONCRETE PAVEMENT WITH INTEGRAL CURB - FOR FULL PLANS OF STATE STREET SEE CITY PROJECT NO. 53W0123.

UNDERDRAINS SHALL BE INSTALLED, PER STANDARD DETAIL DRAWING 4.05 FOR 75' ON EACH SIDE OF THE LOW POINT, OR TO THE NEAREST CURB HIGH POINT. ALL UNDERDRAIN SHALL BE WRAPPED.

ALL GUTTERS SHALL DRAIN WITH A MINIMUM GRADES OF 0.5% TOWARD STORM SEWER INLETS.

THE CROSS SLOPE OF SIDEWALKS AND BARRIER FREE SIDEWALK CURB RAMPS SHALL BE 2%. THE LONGITUDINAL GRADE OF BARRIER FREE SIDEWALK CURB RAMPS SHALL NOT EXCEED 8.33%. ALL SIDEWALK RAMPS SHALL BE CONSTRUCTED ACCORDING TO S.D.D. 3.03. AT ALL OTHER LOCATIONS THE LONGITUDINAL GRADE OF SIDEWALKS SHALL NOT EXCEED 5.0 % OR THE ADJACENT STREET GRADE WHICHEVER IS GREATER NOR BE LESS THAN 0.4% AND SHALL DRAIN TOWARD STORM SEWER INLETS. SIDE SLOPES WITHIN TEN FEET OF A PUBLIC SIDEWALK SHALL NOT EXCEED 4.00:1. ALL SIDEWALK AND SIDEWALK RAMP ELEVATIONS AND GRADES SHALL BE FIELD VERIFIED AND SET TO COMPLY WITH THE CITY OF MADISON STANDARD SPECIFICATIONS AND THE A.D.A. GUIDELINES.

OBTAIN A PRINT OUT OF THE ALIGNMENT FROM THE CITY ENGINEER PRIOR TO STAKING THIS PROJECT.

CURB STATION AND OFFSETS SHALL BE TO THE FACE OF CURB UNLESS OTHERWISE INDICATED. CURB ELEVATIONS SHALL BE TO THE TOP OF CURB (OR EXTENDED TOP OF CURB FOR DRIVEWAYS OR RAMPS) UNLESS OTHERWISE INDICATED.

POWER POLES AND OTHER OBSTRUCTIONS SHALL BE MOVED TO PROVIDE 2 FEET MINIMUM OF CLEAR DISTANCE FROM ANY FACE OF CURB OR EDGE OF SIDEWALK.

ANY INFORMATION SHOWN ON THIS PLAN, WHICH IS NOT PART OF THIS PROJECT, IS PRELIMINARY AND NOT FOR CONSTRUCTION.

THERE MAY BE EXISTING UTILITIES OR OTHER FEATURES WHICH ARE EITHER NOT SHOWN OR SHOWN INCORRECTLY ON THIS PLAN. IT IS THE RESPONSIBILITY OF THE DEVELOPER TO LOCATE AND IDENTIFY ALL UTILITIES AND TOPOGRAPHY WHICH MAY AFFECT THE CONSTRUCTION OF THESE IMPROVEMENTS.

ALL PERMANENT SIGNING AND POSTING WILL BE DETERMINED AND PROVIDED BY THE TRAFFIC ENGINEERING DIVISION, FOLLOWING CONSTRUCTION OF THESE IMPROVEMENTS.

THE DEVELOPER SHALL PROVIDE, INSTALL AND MAINTAIN ALL STREET END BARRICADES, SIGNING AND TRAFFIC CONTROL, AS REQUIRED BY THE CITY TRAFFIC ENGINEER.

PAVEMENT SAWCUTS SHALL BE AS DIRECTED BY THE CITY CONSTRUCTION ENGINEER. SAWCUTS SHOWN ON THE PLAN ARE APPROXIMATE.

CURB ON CUL DE SACS SHALL BE INSTALLED ACCORDING TO SDD 3.05.

PLOT SCALE: \_\_\_\_\_

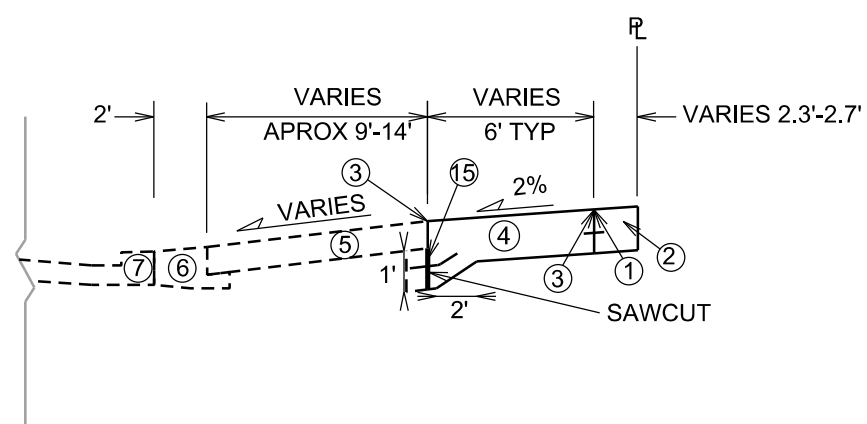
PLOT NAME: \_\_\_\_\_

REV. DATE: \_\_\_\_\_

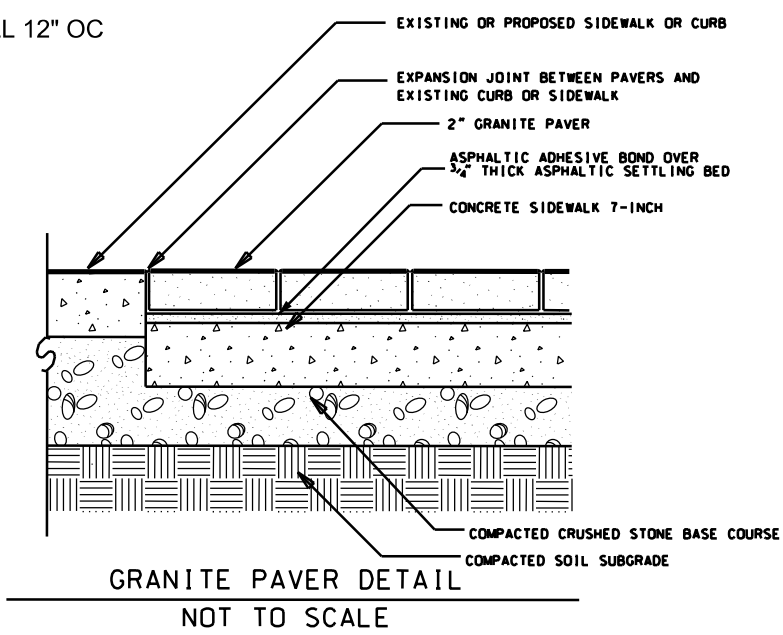
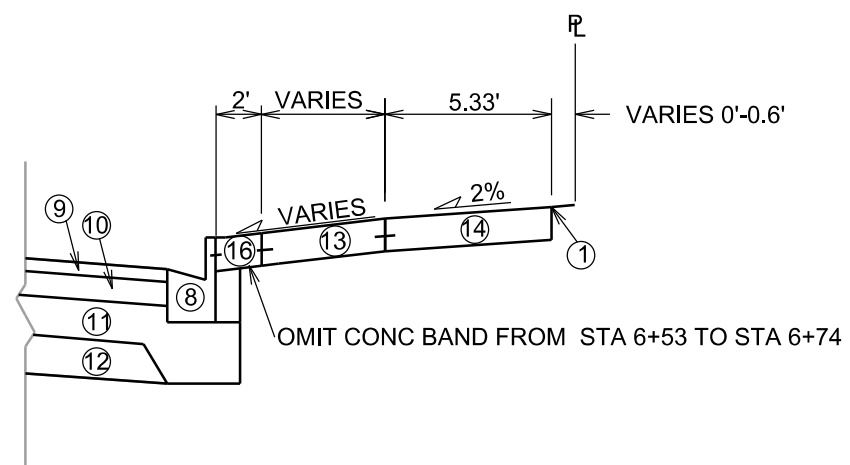
ORIGINATOR: CITY OF MADISON, STREETS DIVISION

- ① REFERENCE LINE AND/OR POINT REFERRED TO ON PROFILE
- ② 7" CONCRETE BAND
- ③ PLACE JOINT FILLER AND JOINT SEALER
- ④ 7" EXPOSED C1 AGGREGATE CONCRETE SIDEWALK
- ⑤ EXISTING 7" STRUCTURAL TREE VAULT SLAB - EXPOSED AGGREGATE (REPLACE IF DAMAGED)
- ⑥ EXISTING REINFORCED CONCRETE BAND (REPLACE IF DAMAGED)
- ⑦ EXISTING 10" CONCRETE PAVEMENT WITH INTEGRAL CURB (REPLACE IF DAMAGED)
- ⑧ TYPE 'A' CONCRETE CURB AND GUTTER (USE TYPE 'A' MOUNTABLE WHERE NOTED ON CUL-DE-SAC BULB)
- ⑨ 2" UPPER LAYER BIT PVMT, 12.5 mm, TYPE E-3
- ⑩ 3.25" LOWER LAYER BIT PVMT, 19 mm, TYPE E-3
- ⑪ 4" BASE AGGREGATE GRADATION 2
- ⑫ 6" BASE AGGREGATE GRADATION 1
- ⑬ 7" CONCRETE TERRACE (7" C1 EXPOSED CONCRETE ADJACENT TO TREE GRATES ONLY)
- ⑭ 7" CONCRETE SIDEWALK
- ⑮ #5 EPOXY COATED REBAR, INSTALL 12" OC
- ⑯ 7" CONCRETE BAND

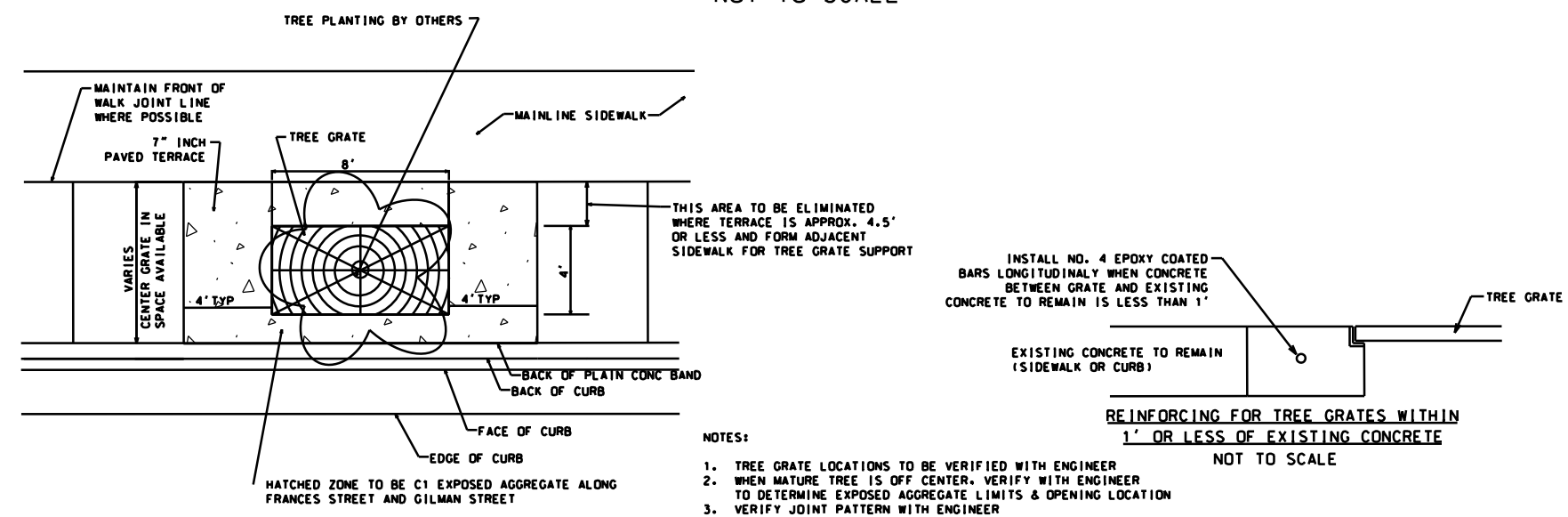
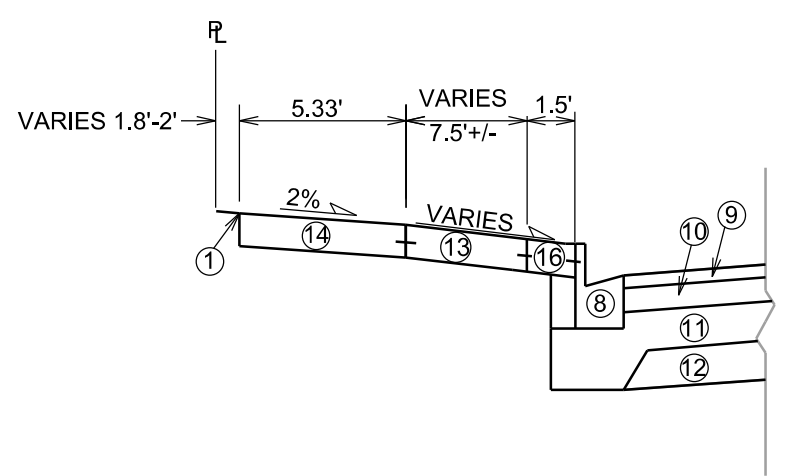
TYPICAL SECTION  
STATE STREET  
STA 1+40 TO 3+90  
NTS



TYPICAL SECTION  
FRANCES STREET  
(STA 5+25 TO STA 6+84)  
NTS



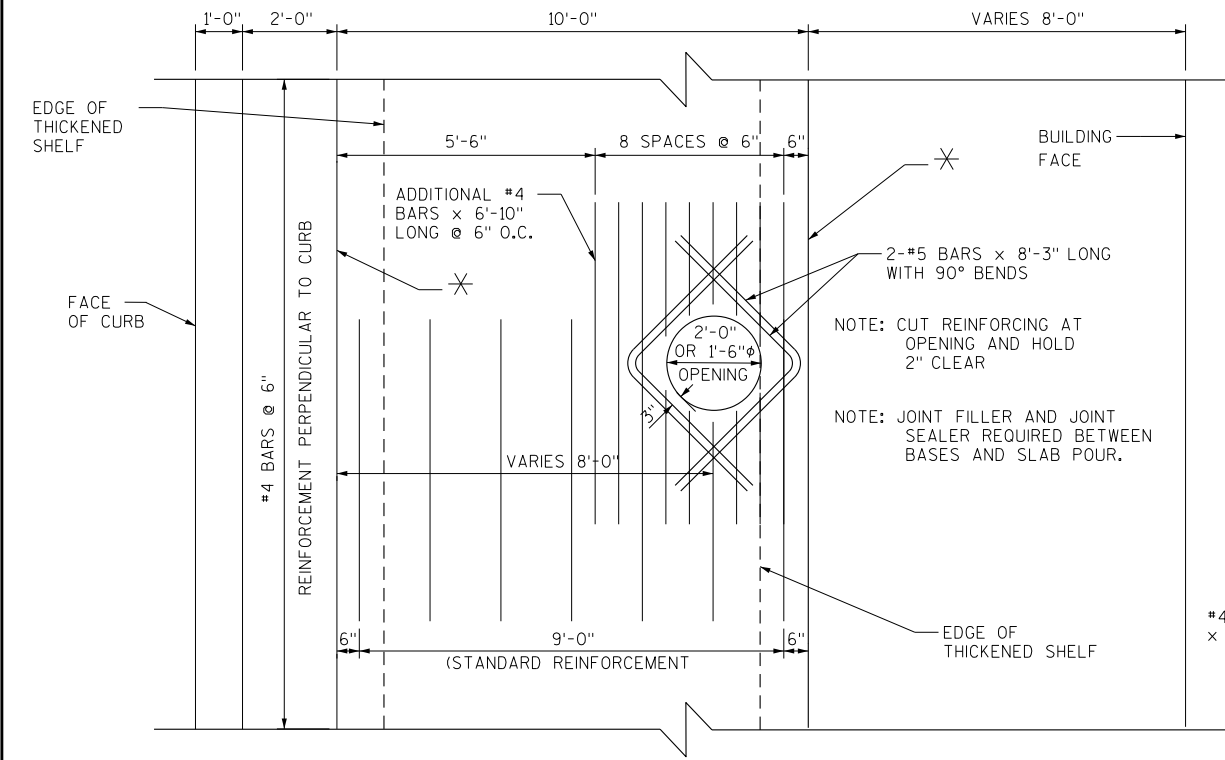
TYPICAL SECTION  
GILMAN STREET  
NTS



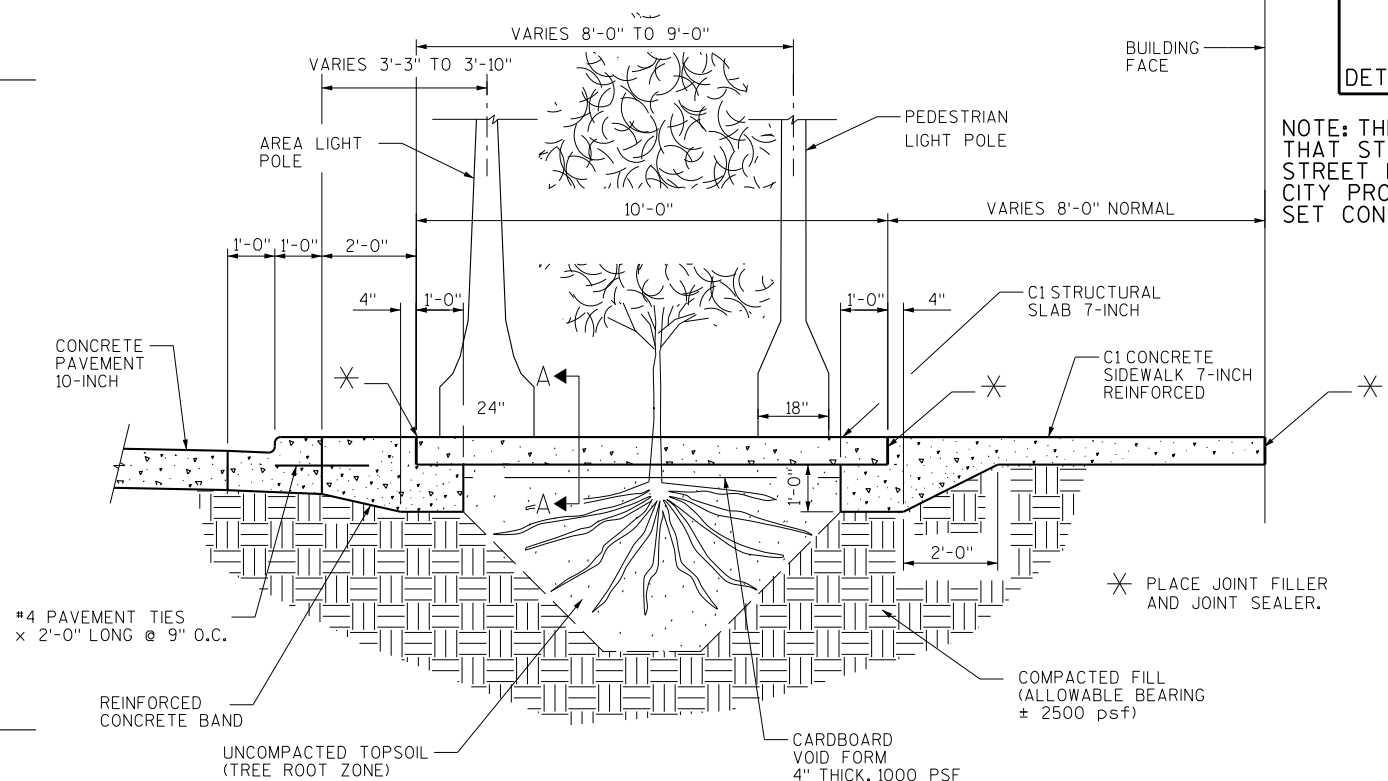
- NOTES:
1. TREE GRATE LOCATIONS TO BE VERIFIED WITH ENGINEER
  2. WHEN MATURE TREE IS OFF CENTER. VERIFY WITH ENGINEER TO DETERMINE EXPOSED AGGREGATE LIMITS & OPENING LOCATION
  3. VERIFY JOINT PATTERN WITH ENGINEER
  4. REFER TO S.D.D. 2-02 FOR BACKFILL DETAILS

PLOT SCALE: \_\_\_\_\_  
PLOT NAME: \_\_\_\_\_  
REV. DATE: \_\_\_\_\_  
ORIGINATOR: CITY OF MADISON, STREETS DIVISION

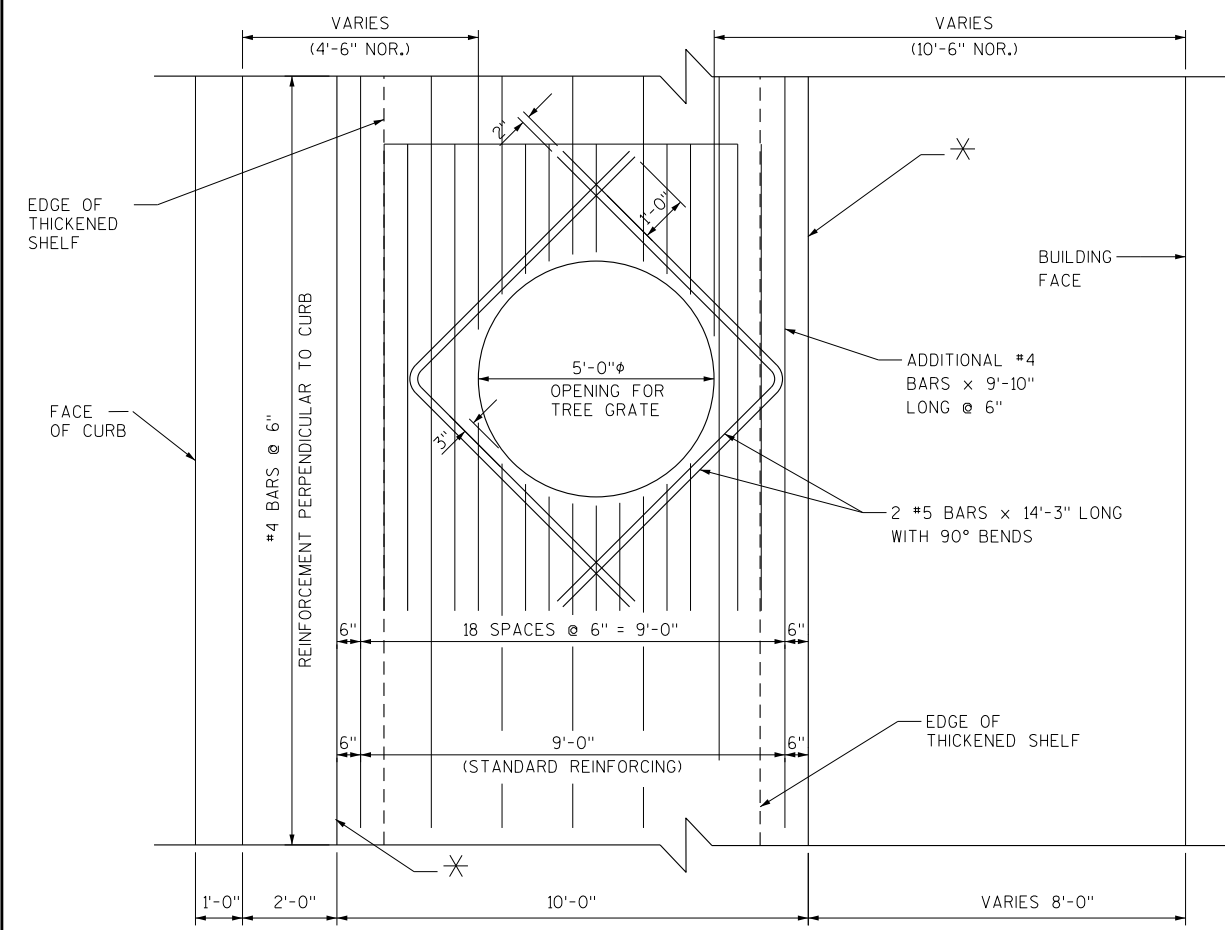
NOTE: THESE DETAILS PROVIDED IN THE EVENT THAT STRUCTURAL TREE VAULT SLAB ON STATE STREET IS DAMAGED AND MUST BE REPLACED. SEE CITY PROJECT NO. 53W0123 FOR FULL SET CONSTRUCTION PLANS FOR STATE STREET.



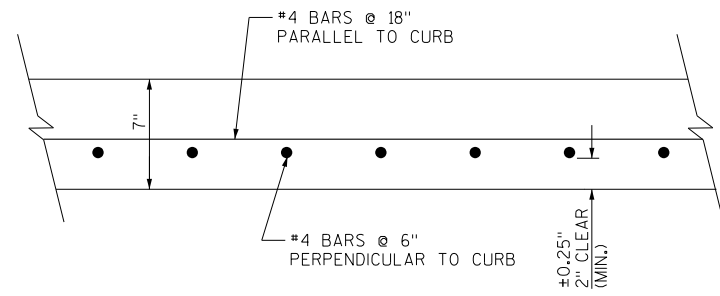
REINFORCEMENT PLAN - LIGHT BASE OPENINGS



ROOT ZONE DETAIL



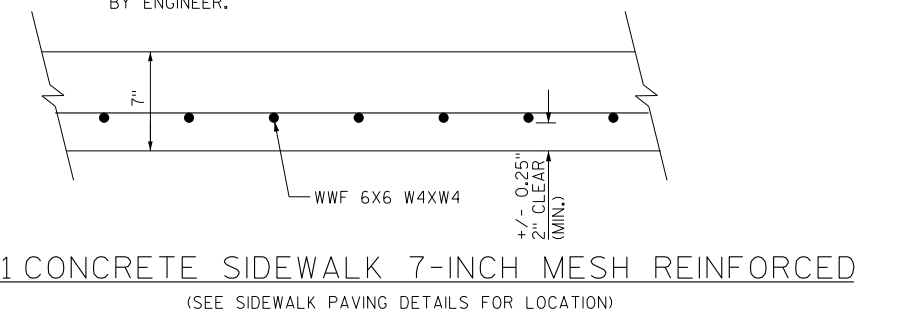
REINFORCEMENT PLAN - TREE OPENINGS



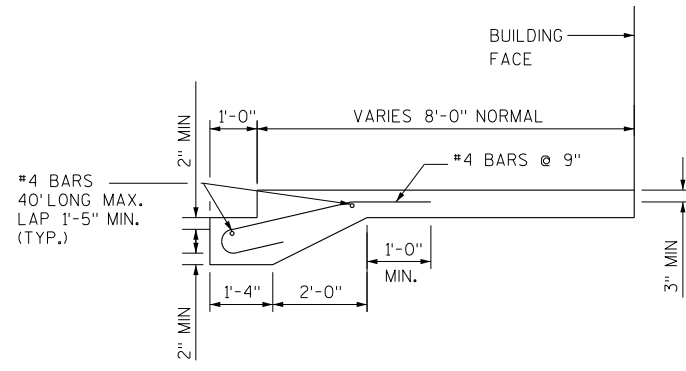
SECTION A - C1 STRUCTURAL SLAB 7-INCH REINFORCEMENT

NOTE: THIS CONFIGURATION MAY BE REPLACED AT THE CONTRACTOR'S DISCRETION BY WELDED WIRE FABRIC MESH HAVING AN EQUIVALENT OR GREATER AREA OF STEEL IN EACH DIRECTION. IN THAT CASE, ADDITIONAL BARS MUST BE ADDED AT SLAB OPENINGS AS SHOWN IN REINFORCEMENT PLAN DETAILS

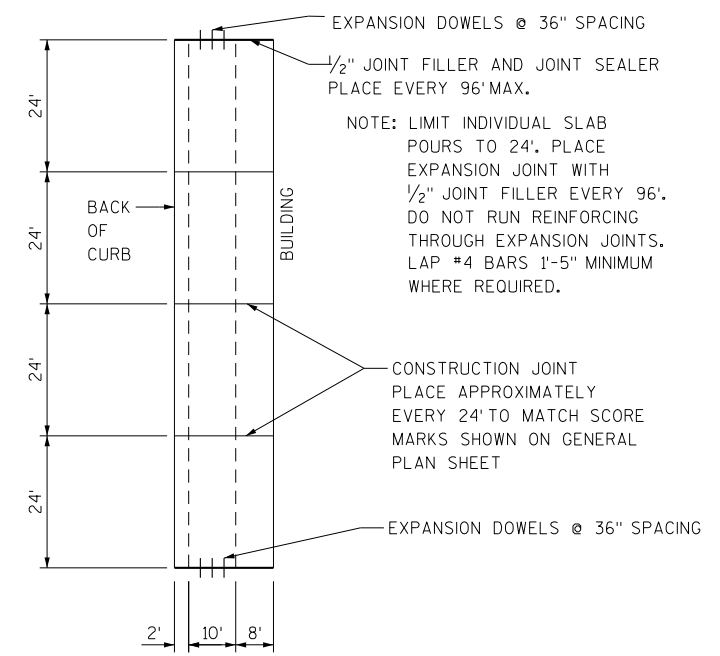
- POSSIBLE EQUIVALENT MESH CONFIGURATIONS INCLUDE:
- WWF 6x12 W18xW14;
  - WWF 6x6 W18xW6;
  - WWF 6x18 W18xW18;
  - WWF 9x18 W26xW18



C1 CONCRETE SIDEWALK 7-INCH MESH REINFORCED  
(SEE SIDEWALK PAVING DETAILS FOR LOCATION)



C1 CONCRETE SIDEWALK 7-INCH REINFORCED REINFORCEMENT



JOINT PLAN

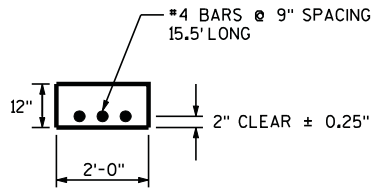
PLOT SCALE: \_\_\_\_\_  
PLOT NAME: \_\_\_\_\_  
REV. DATE: \_\_\_\_\_

ORIGINATOR: CITY OF MADISON, STREETS DIVISION

REPRODUCED FROM PROJECT NO 53W0123. NOTE THAT NOT ALL DETAILS MAY BE RELEVANT TO THE HUB PROJECT. CONSTRUCTION ENGINEER SHALL DETERMINE FINAL LIMITS OF REQUIRED RESTORATION

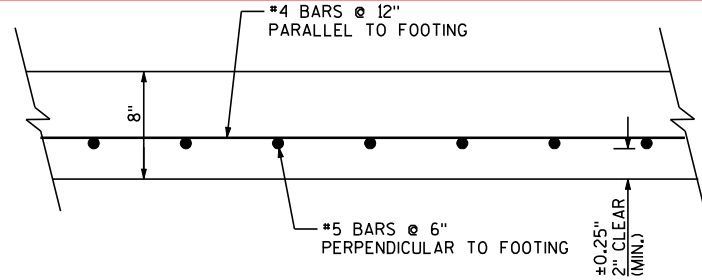
2

2



CONCRETE FOOTING

TO BE PAID AS PART OF  
C1 STRUCTURAL SLAB 8-INCH



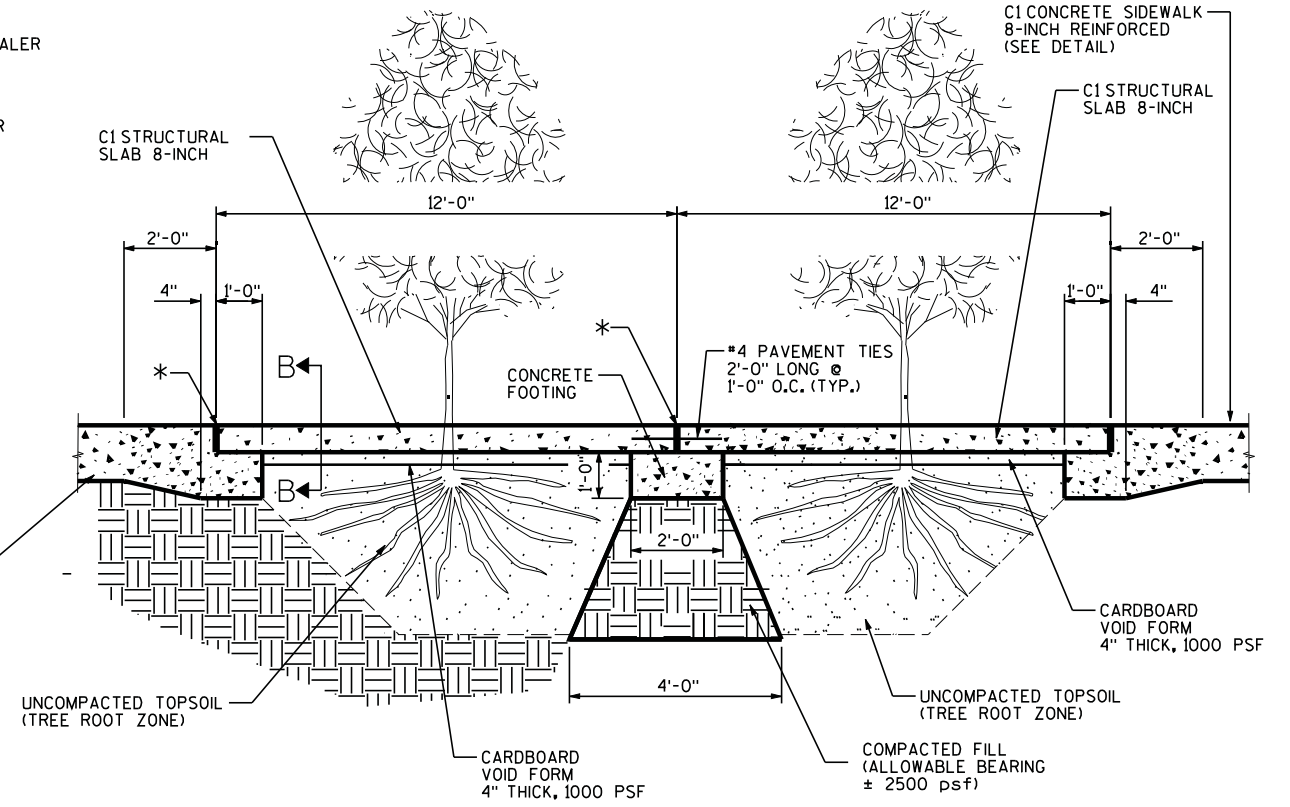
SECTION B-B, C1 STRUCTURAL SLAB 8-INCH REINFORCEMENT

NOTE: THIS CONFIGURATION MAY BE REPLACED AT THE CONTRACTOR'S DISCRETION BY WELDED WIRE FABRIC MESH HAVING AN EQUIVALENT OR GREATER AREA OF STEEL IN EACH DIRECTION. IN THAT CASE, ADDITIONAL BARS MUST BE ADDED AT SLAB OPENINGS AS SHOWN IN REINFORCEMENT PLAN DETAILS

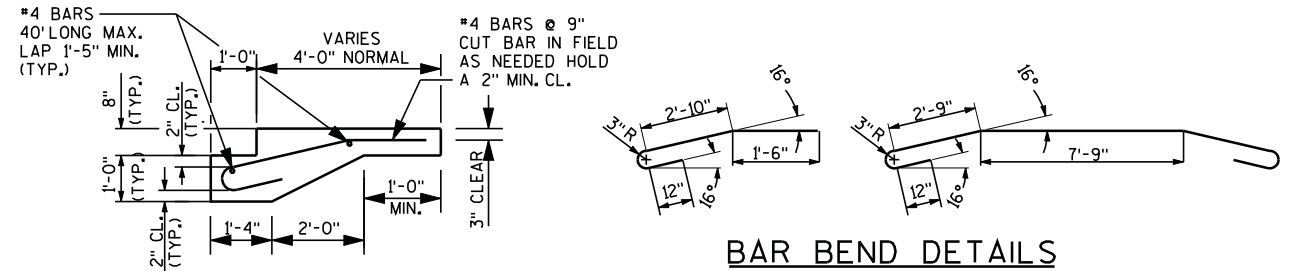
POSSIBLE EQUIVALENT MESH CONFIGURATIONS INCLUDE:  
- WWF 6x12 W31xW20; - WWF 6x6 W31xW10;

NOTE: COLOR OF JOINT SEALER TO BE DETERMINED BY ENGINEER.

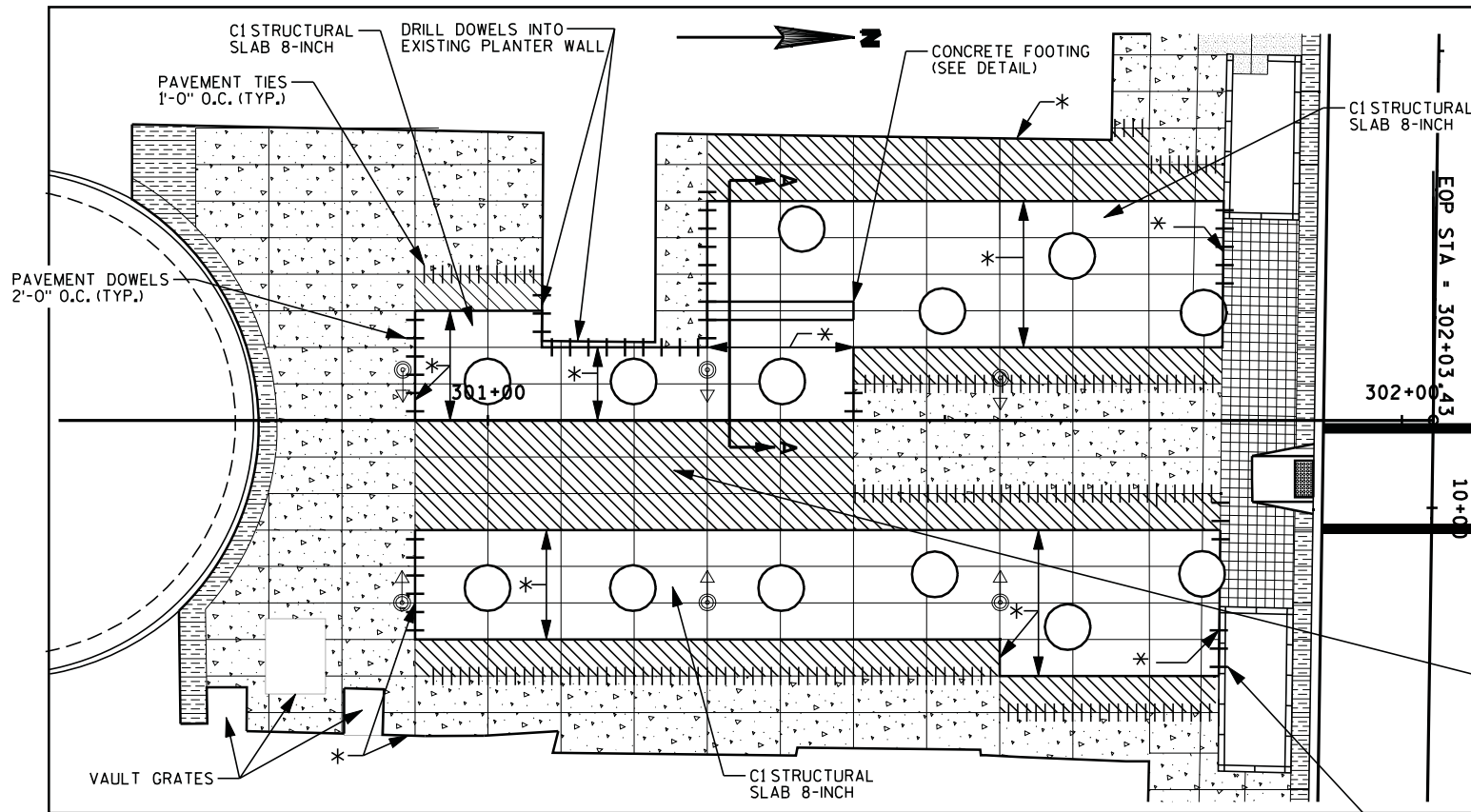
\* PLACE JOINT FILLER AND JOINT SEALER.



SECTION A-A



BAR BEND DETAILS



NORTH FRANCES STREET PLAN VIEW

(SEE JOINT PLAN DETAIL FOR ELEVATIONS)  
SCALE: 1" = 20'

PLACE DOWELS INTO GRANITE CURB FOOTING 2'-0" O.C. (TYP.)

LEGEND

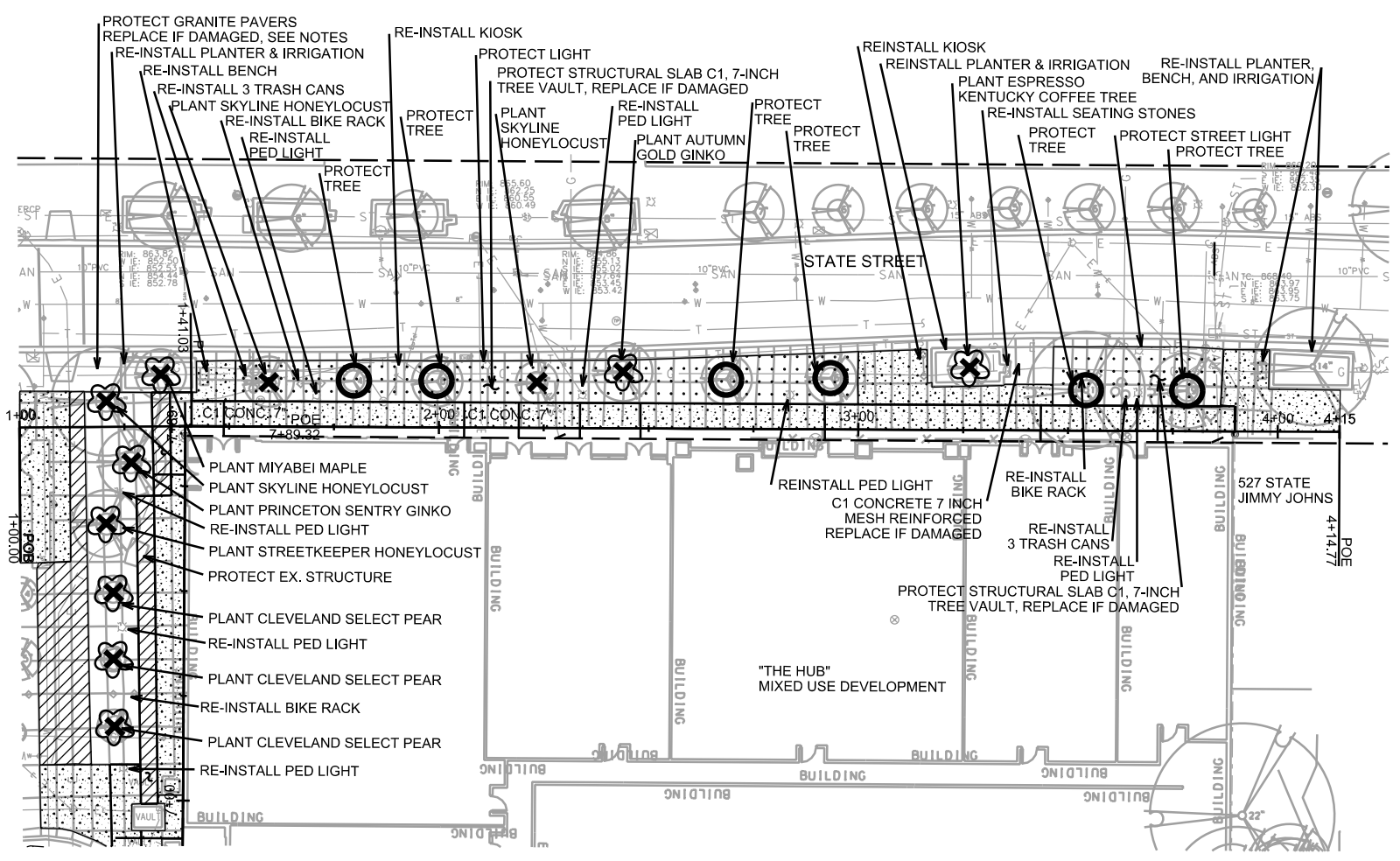
- C1 CONCRETE SIDEWALK 7-INCH
- C1 CONCRETE SIDEWALK 8-INCH REINFORCED
- 7-INCH CONCRETE SIDEWALK
- 3/4" CHAMFER
- TREE GRATE
- PEDESTRIAN LIGHT

NOTE: ADDITIONAL REINFORCEMENT REQ'D. AT TREE & LIGHT BASE OPENINGS. SEE REINFORCEMENT PLAN FOR TREE OPENINGS & LIGHT BASE OPENINGS

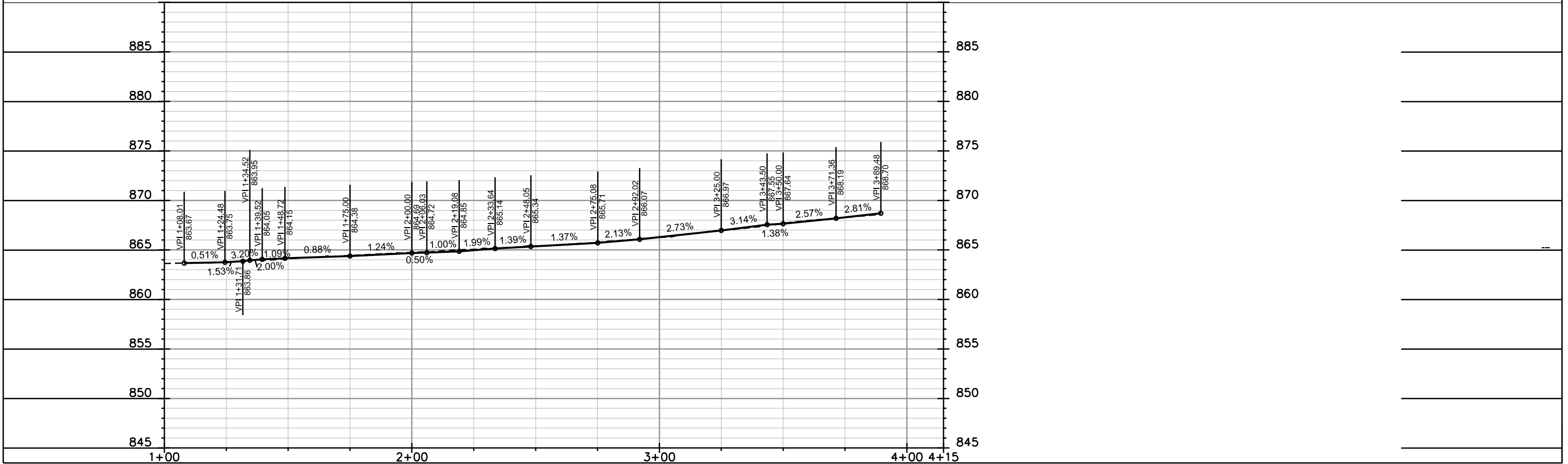
\* PLACE JOINT FILLER AND SEALER

C1 CONCRETE SIDEWALK 8-INCH REINFORCED REINFORCEMENT

NOTE: SEE BAR BEND DETAILS



- NOTES:
1. REPLACE GRANITE PAVERS IF DAMAGED. SALVAGED PAVERS PLANNED FOR RE-INSTALLATION SHALL BE INSPECTED BY CITY STAFF TO ENSURE THAT DAMAGE HAS NOT OCCURED. NEW PAVERS, IF REQUIRED, SHALL BE FURNISHED AND INSTALLED BY DEVELOPER IN ACORDANCE WITH SPECIFICATION PROVIDED BY CITY ENGINEERING. CONTACT CHRIS PETYKOWSKI AT 267-8678 TO APPROVE NEW PAVERS PRIOR TO INSTALLATION. PAVERS MUST MATCH EX. PAVERS ELSEWHERE OR THEY SHALL BE REJECTED.
  2. RESTORATION LIMITS SHOWN ARE APPROXIMATE. CONSTRUCTION ENGINEER SHALL DETERMINE THE LIMITS OF REQUIRED RESTORATION.
  3. CONTRACTOR SHALL CONTACT CITY FORESTRY AT LEAST ONE WEEK BEFORE POURING TREE GRATE LOCATIONS SO FORESTRY AND ENGINEERING CAN REVIEW PLACEMENT OF TREE GRATES. EXISTING GRATE CASTINGS SHALL BE STORED BY CONTRACTOR AND REINSTALLED. NEW GRATES SHALL BE SUPPLIED BY CONTRACTOR AS NEEDED- 4'X8' GRATE CASTINGS ARE NEENAH R-8815-A
  4. ALL TREES SHALL BE AT LEAST 2.5" CALIPER B&B PLANTING STOCK. CONTRACTOR SHALL CONTACT DEAN KAHL AT CITY FORESTRY (266-4891 OR 266-4816) AT LEAST ONE WEEK BEFORE PLANTING SO FORESTRY CAN INSPECT PLANTING STOCK AND REVIEW PLANTING SPECIFICATIONS WITH LANDSCAPE CONTRACTOR.



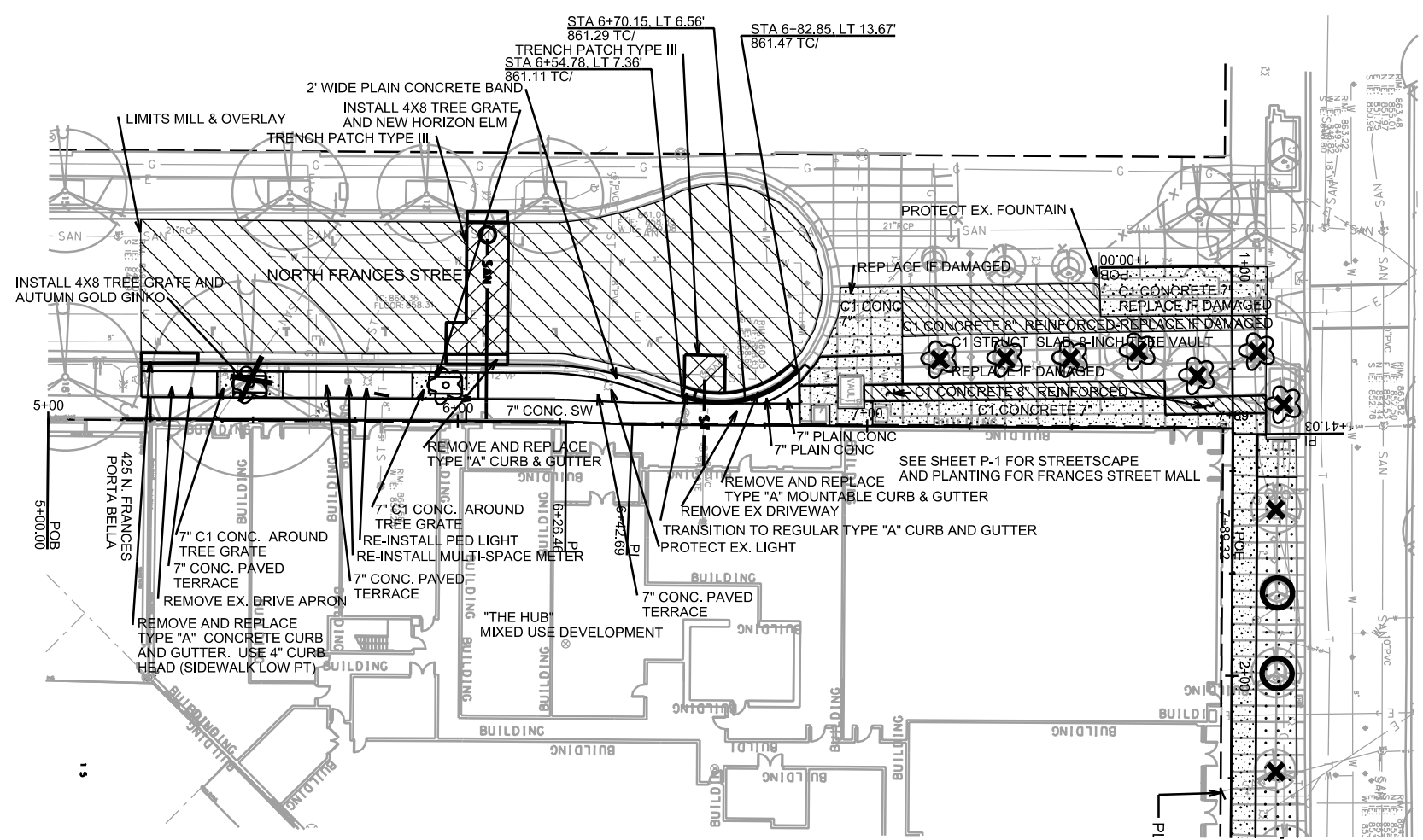
PLOT SCALE: \_\_\_\_\_

PLOT NAME: \_\_\_\_\_

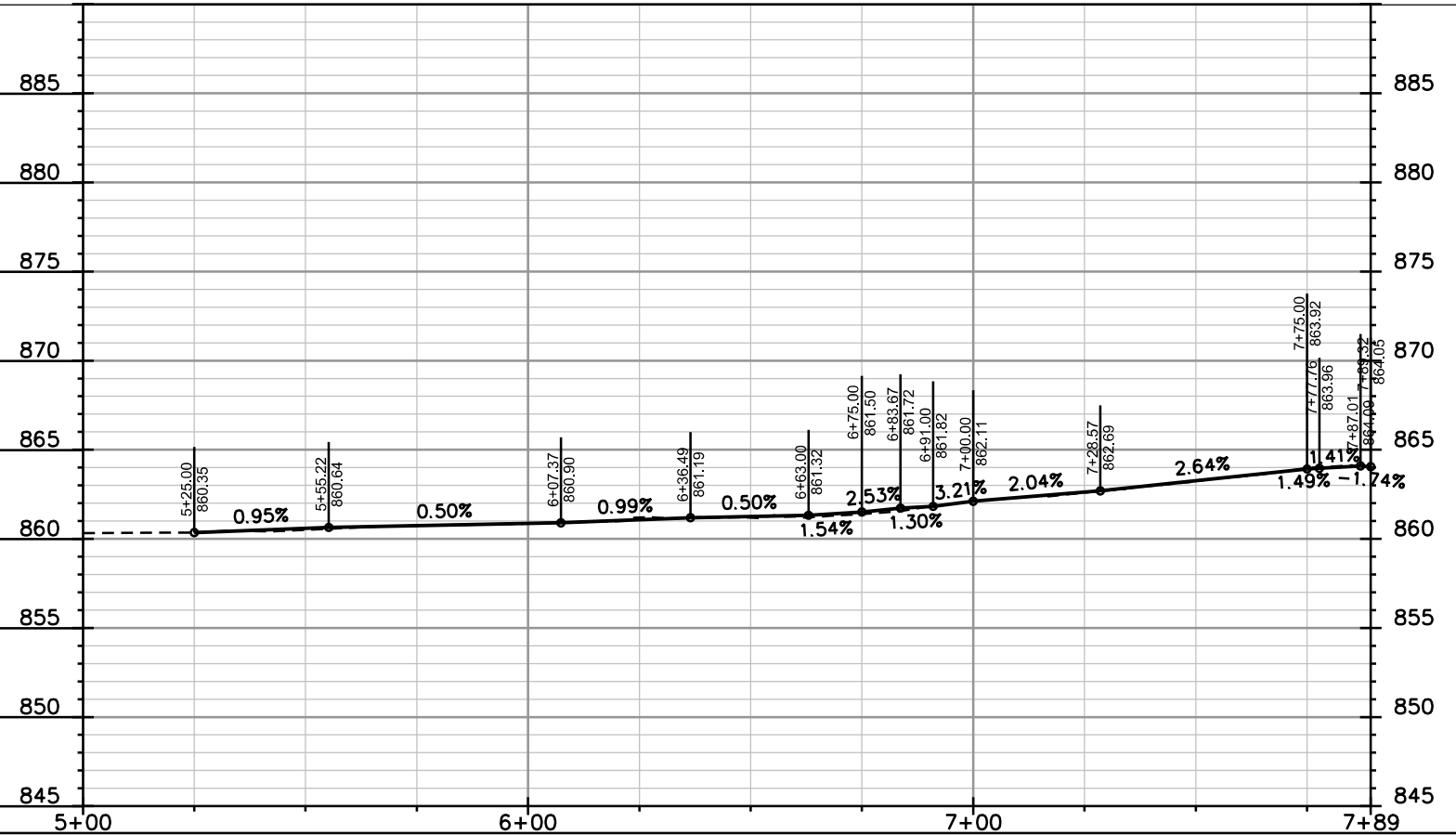
REV. DATE: \_\_\_\_\_

ORIGINATOR: CITY OF MADISON, STREETS DIVISION





1. RESTORATION LIMITS SHOWN ARE APPROXIMATE, CONSTRUCTION ENGINEER SHALL DETERMINE LIMITS OF REQUIRED RESTORATION.
2. CONTRACTOR SHALL CONTACT CITY FORESTRY AT LEAST ONE WEEK BEFORE POURING TREE GRATE LOCATIONS SO FORESTRY AND ENGINEERING CAN REVIEW PLACEMENT OF TREE GRATES. EXISTING GRATE CASTINGS SHALL BE STORED BY CONTRACTOR AND REINSTALLED. NEW GRATES SHALL BE SUPPLIED BY CONTRACTOR AS NEEDED- 4'X8' GRATE CASTINGS ARE NEENAH R-8815-A
3. ALL TREES SHALL BE AT LEAST 2.5" CALIPER B&B PLANTING STOCK. CONTRACTOR SHALL CONTACT DEAN KAHL WITH CITY FORESTRY (266-4891 OR 266-4816) AT LEAST ONE WEEK BEFORE PLANTING SO FORESTRY CAN INSPECT PLANTING STOCK AND REVIEW PLANTING SPECIFICATIONS WITH LANDSCAPE CONTRACTOR.
4. CONTRACTOR SHALL INSTALL MULTI-SPACE PARKING METER BASE AT THE LOCATION SHOWN. CONTACT DAN VALENZA (266-4767) AT CITY PARKING UTILITY AT LEAST 48 HOURS IN ADVANCE OF CONCRETE POUR TO COORDINATE INSPECTION. REFER TO ARTICLE 604.7 OF THE STANDARD SPECIFICATIONS, AND REFER TO STANDARD DETAIL DRAWING 6.47 FOR DETAILS OF BASE INSTALLATION.
5. ALL PORTIONS OF WATERING SYSTEM ON FRANCES STREET AND STATE STREET SHALL BE REPLACED IN-KIND, SEE SHEETS W1-W5

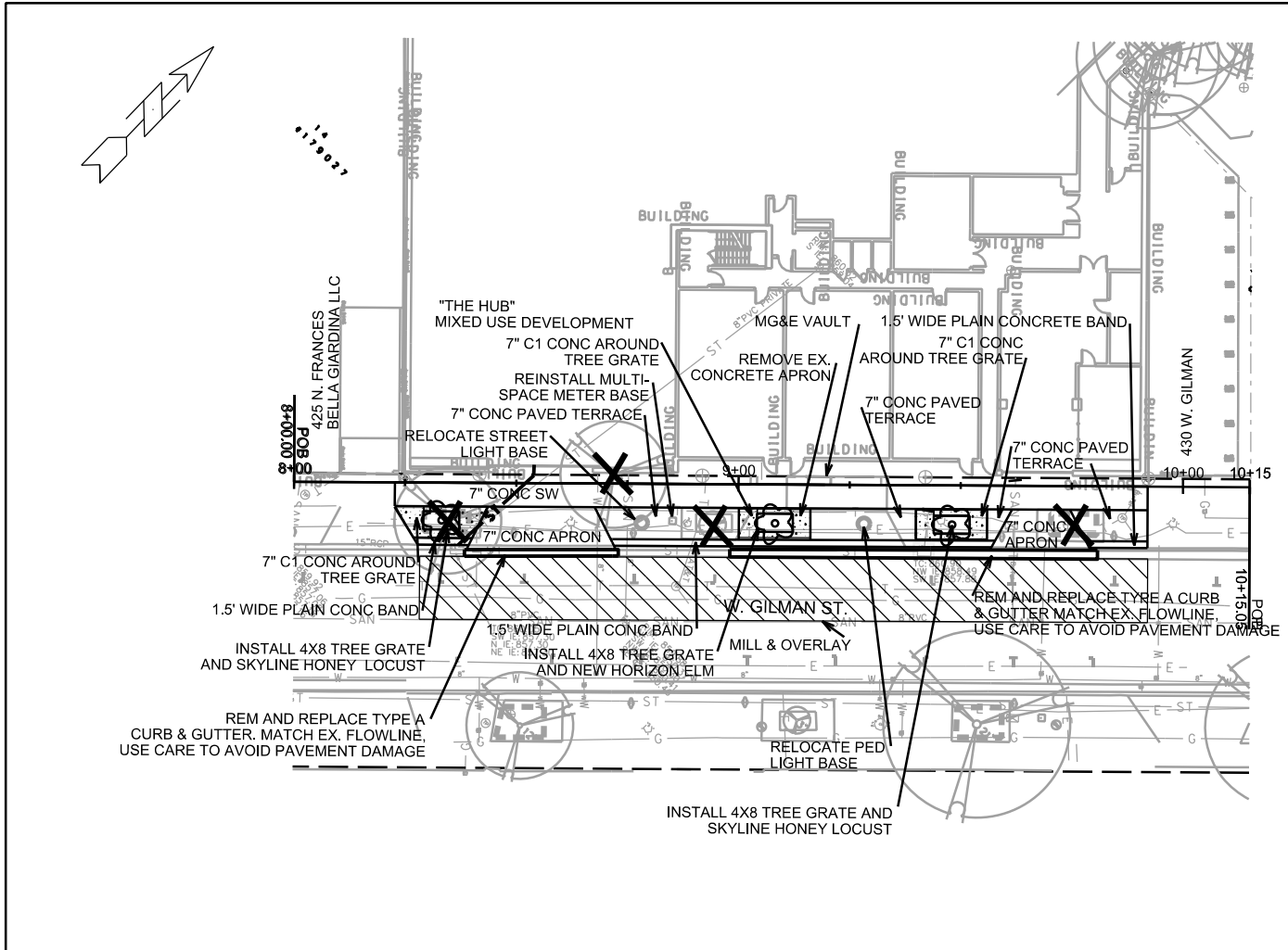


PLOT SCALE: \_\_\_\_\_

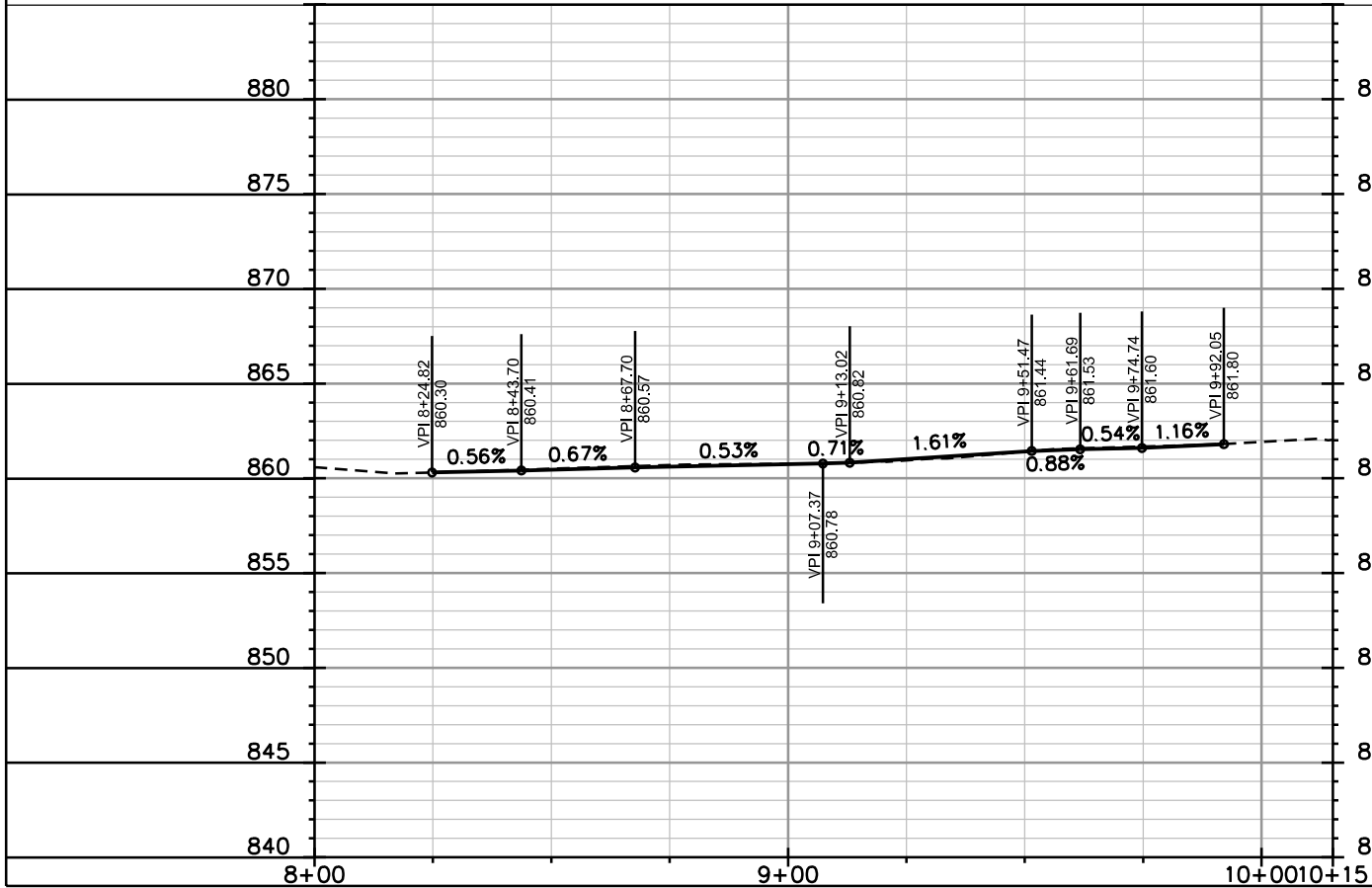
PLOT NAME: \_\_\_\_\_

REV. DATE: \_\_\_\_\_

ORIGINATOR: CITY OF MADISON, STREETS DIVISION



1. RESTORATION LIMITS SHOWN ARE APPROXIMATE, CONSTRUCTION ENGINEER SHALL DETERMINE THE LIMITS OF REQUIRED RESTORATION.
2. CONTRACTOR SHALL CONTACT CITY FORESTRY AT LEAST ONE WEEK BEFORE POURING TREE GRATE LOCATIONS SO FORESTRY AND ENGINEERING CAN REVIEW PLACEMENT OF TREE GRATES. EXISTING GRATE CASTINGS SHALL BE STORED BY CONTRACTOR AND REINSTALLED. NEW GRATES SHALL BE SUPPLIED BY CONTRACTOR AS NEEDED- 4'X8' GRATE CASTINGS ARE NEENAH R-8815-A
3. ALL TREES SHALL BE AT LEAST 2.5\" CALIPER B&B PLANTING STOCK. CONTRACTOR SHALL CONTACT DEAN KAHL WITH CITY FORESTRY (266-4891 OR 266-4816) AT LEAST ONE WEEK BEFORE PLANTING SO FORESTRY CAN INSPECT PLANTING STOCK AND REVIEW PLANTING SPECIFICATIONS WITH LANDSCAPE CONTRACTOR.
4. CONTRACTOR SHALL INSTALL MULTI-SPACE PARKING METER BASE AT THE LOCATION SHOWN. CONTACT DAN VALENZA (266-4767) AT CITY PARKING UTILITY AT LEAST 48 HOURS IN ADVANCE OF CONCRETE POUR TO COORDINATE INSPECTION. REFER TO ARTICLE 604.7 OF THE STANDARD SPECIFICATIONS, AND REFER TO STANDARD DETAIL DRAWING 6.47 FOR DETAILS OF BASE INSTALLATION.



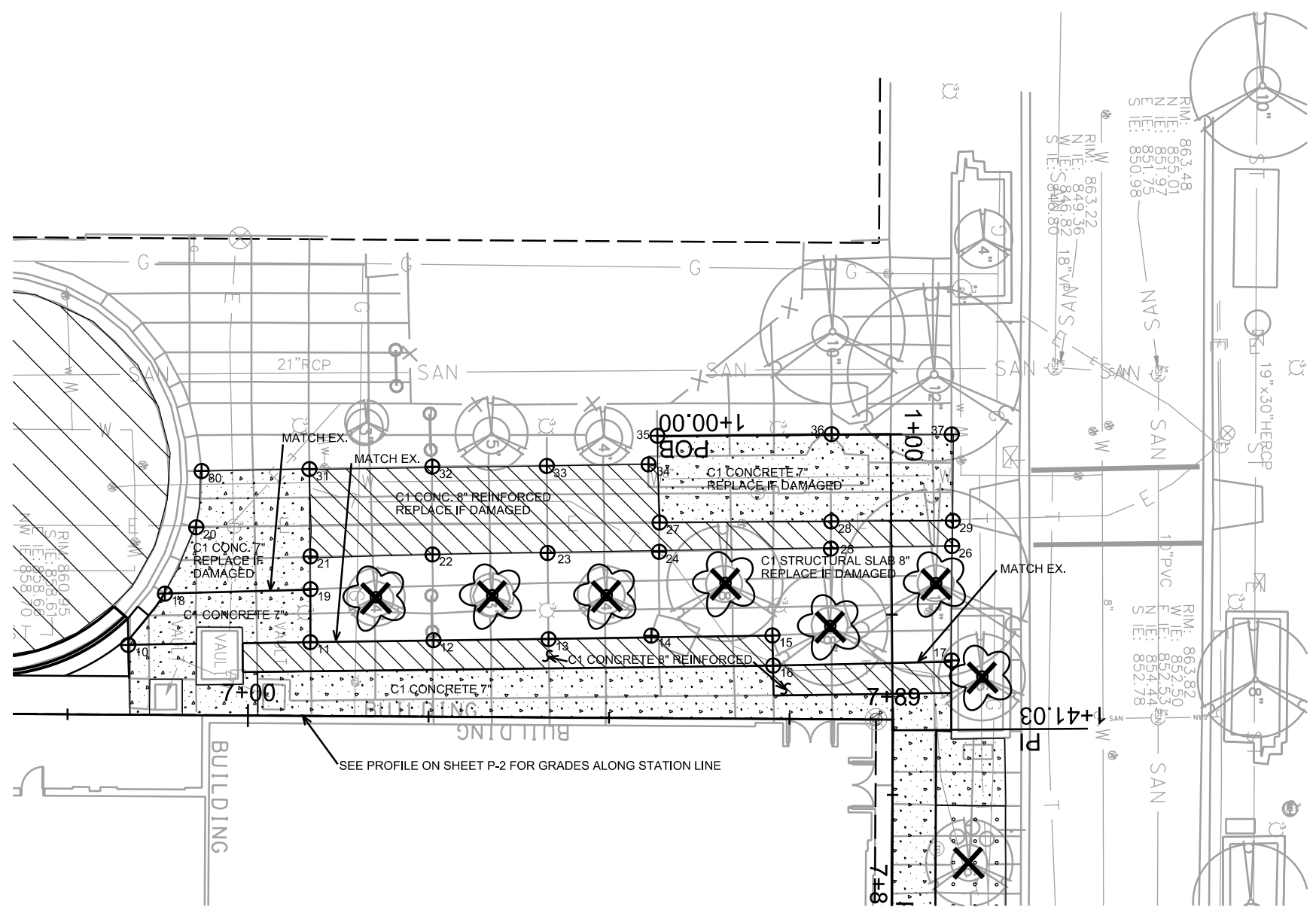
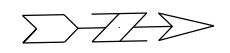
PLOT SCALE: \_\_\_\_\_

PLOT NAME: \_\_\_\_\_

REV. DATE: \_\_\_\_\_

ORIGINATOR: CITY OF MADISON, STREETS DIVISION





PT	STATION, OFFSET	ELEV.
10	STA 6+83.36, LT 9.67'	861.43
11	STA 7+08.54, LT 10.20'	862.00
12	STA 7+25.60, LT 10.57'	862.42
13	STA 7+41.57, LT 10.84'	862.89
14	STA 7+55.79, LT 11.43'	863.30
15	STA 7+72.55, LT 11.54'	863.79
16	STA 7+72.55, LT 11.54'	863.81
17	STA 1+31.45, LT 8.20'	863.75
18	STA 6+88.38, LT 16.80'	861.56
19	STA 7+08.53, LT 17.53'	862.03
20	STA 6+92.65, LT 26.01'	861.82
21	STA 7+08.51, LT 22.11'	861.97
22	STA 7+25.41, LT 22.48'	862.34
23	STA 7+41.35, LT 22.80'	862.77
24	STA 7+56.81, LT 23.06'	863.26
25	STA 7+80.59, LT 23.65'	863.65
26	STA 1+15.57, LT 8.41"	863.62
27	STA 7+56.83, LT 27.12'	863.25
28	STA 7+80.62, LT 27.41'	863.66
29	STA 1+12.07, LT 8.54"	863.65
30	STA 6+93.34, LT 33.82'	861.86
31	STA 7+08.29, LT 34.21'	861.96
32	STA 7+25.30, LT 34.64'	862.17
33	STA 7+41.17, LT 34.85'	862.52
34	STA 7+55.46, LT 35.18'	862.83
35	STA 7+56.46, LT 39.14'	862.93
36	STA 7+80.57, LT 39.52'	863.66
37	STA 1+00.09, LT 8.48"	863.61

\* STATE STREET STATIONING

- NOTES:
- SEE SHEETS P-1 AND P-2 FOR IMPROVEMENTS ON STATE STREET AND FRANCES STREET MALL.
  - RESTORATION LIMITS SHOWN ARE APPROXIMATE, CONSTRUCTION ENGINEER SHALL DETERMINE FINAL LIMITS OF REQUIRED RESTORATION.
  - GRADES GIVEN OUTSIDE THE RESTORATION ARE FOR INFORMATION ONLY, IN THE EVENT THAT THE LIMITS OF RESTORATION MUST BE EXPANDED.

PLOT SCALE: \_\_\_\_\_

PLOT NAME: \_\_\_\_\_

REV. DATE: \_\_\_\_\_









ORIGINATOR: CITY OF MADISON, STREETS DIVISION

ELECTRICAL PLAN

GILMAN ST.

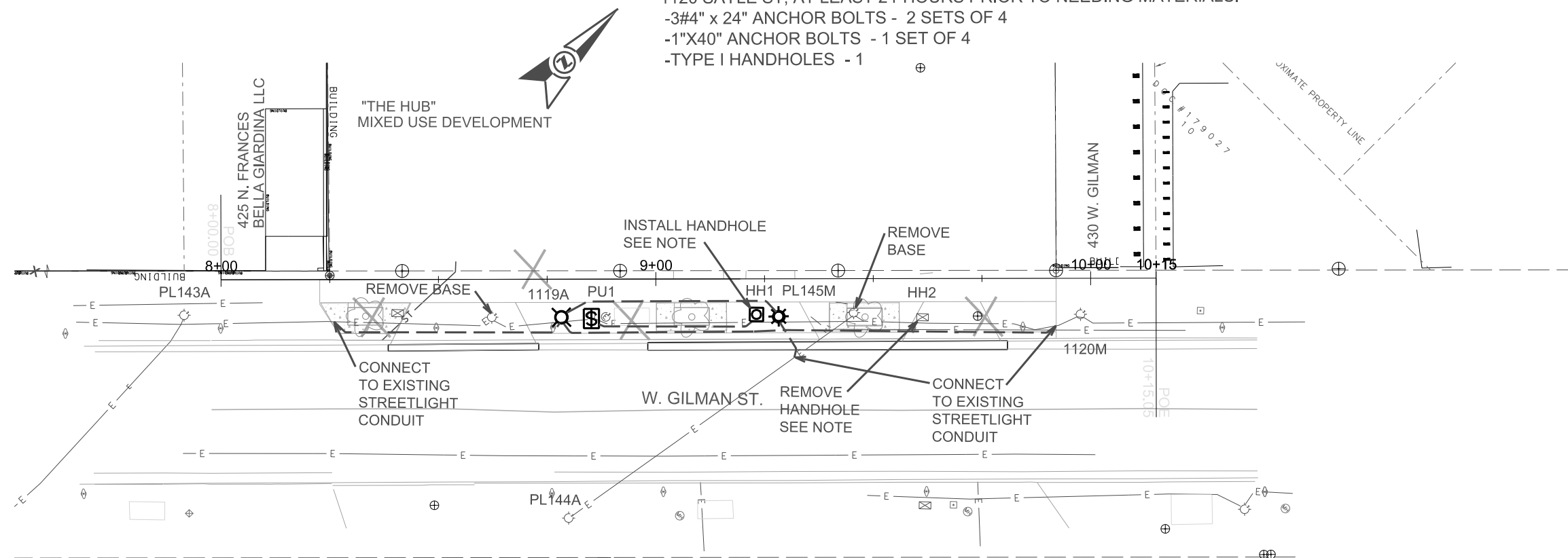
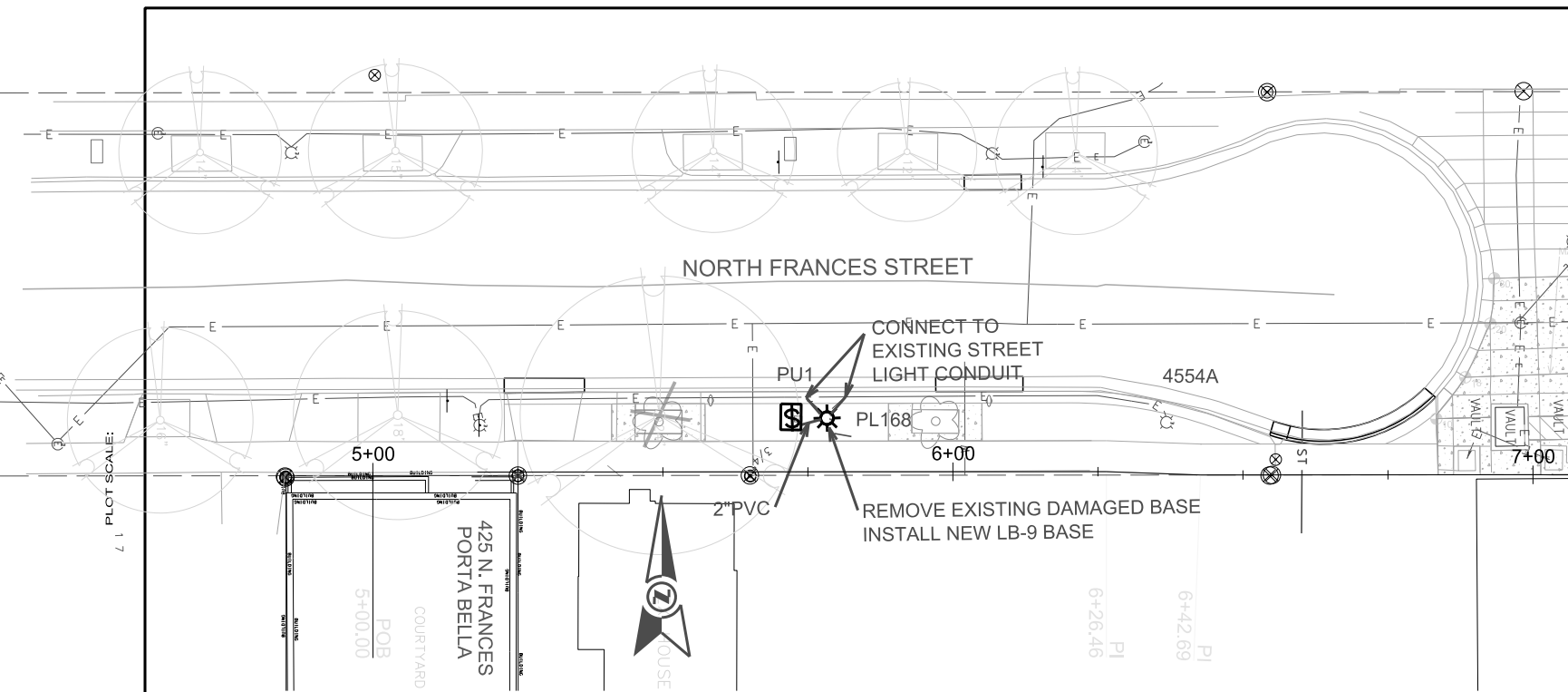
CITY OF MADISON

9/19/14 KF

- LEGEND
-  LB-3 BASE
  -  LB-9 BASE, 5' DEPTH
  -  TYPE I HANDHOLE
  -  BASE FOR MULTI-SPACE PARKING METER
  -  INSTALL 2" PVC (UNLESS NOTED)
  -  EXISTING CONDUIT
  -  EXISTING STREETLIGHT
  -  EXISTING ELECTRICAL HANDHOLE

GENERAL ELECTRIC NOTES:

1. ALL LOCATIONS ARE APPROXIMATE. THE TRAFFIC ENGINEER SHALL APPROVE FINAL LOCATIONS, INCLUDING SETBACK, IN THE FIELD AFTER CONTRACTOR SURVEYS STAKING. THE CONTRACTOR SHALL NOTIFY DAN DETTMANN (266-6536) CITY TRAFFIC ENGINEERING, AT LEAST 24-HOURS IN ADVANCE OF NEEDING CONDUIT OR BASE LOCATIONS MARKED.
2. BASES INSTALLED IN TERRACE SHALL BE 4' FROM FACE OF CURB UNLESS OTHERWISE NOTED. SUBJECT TO NOTE 1 ABOVE.
3. THE CONTRACTOR SHALL DO ALL WORK IN ACCORDANCE WITH "CITY OF MADISON STANDARD SPECIFICATIONS FOR PUBLIC WORKS CONSTRUCTION, MOST CURRENT EDITION" AND ALL ADDENDUMS THERE TO. ALL CONDUIT SHALL BE PVC, SCHEDULE 80 UNDER PAVEMENT OR SCHEDULE 40 OTHERWISE. PULL WIRE REQUIRED AS PER STANDARD SPECIFICATIONS.
4. THE CONTRACTOR SHALL CALL MIKE CHRISTOPH (266-9031) AT THE TRAFFIC ENGINEERING SHOP AT LEAST 24-HOURS IN ADVANCE OF POURING BASES OR BURYING CONDUIT TO ARRANGE FOR INSPECTION. ANY WORK COMPLETED WITHOUT INSPECTION IS SUBJECT TO REJECTION.
5. REMOVE HH1, CONNECT CONDUIT ENDS WITH SPLIT DUCT OVER EXISTING FIBER OPTIC CABLE; CONTACT MIKE CHRISTOPH FOR FURTHER DIRECTION BEFORE BEGINNING.
6. CONSTRUCT HH1 TO INTERCEPT EXISTING FIBER OPTIC CONDUIT. CAREFULLY RING CUT TO AVOID DAMAGING FIBER CABLE WITHIN. CONTACT MIKE CHRISTOPH FOR FURTHER DIRECTION BEFORE BEGINNING.
7. THE CONTRACTOR SHALL ARRANGE FOR PICK UP OF THE FOLLOWING CITY FURNISHED MATERIALS, WHICH SHOULD BE ARRANGED FOR PICKUP BY CALLING DENNIS ROWE, TRAFFIC ENGINEERING SHOP, 266-9034 1120 SAYLE ST, AT LEAST 24-HOURS PRIOR TO NEEDING MATERIALS:
  - 3#4" x 24" ANCHOR BOLTS - 2 SETS OF 4
  - 1"X40" ANCHOR BOLTS - 1 SET OF 4
  - TYPE I HANDHOLES - 1



PLOT SCALE: 1" = 7'

PLOT NAME:

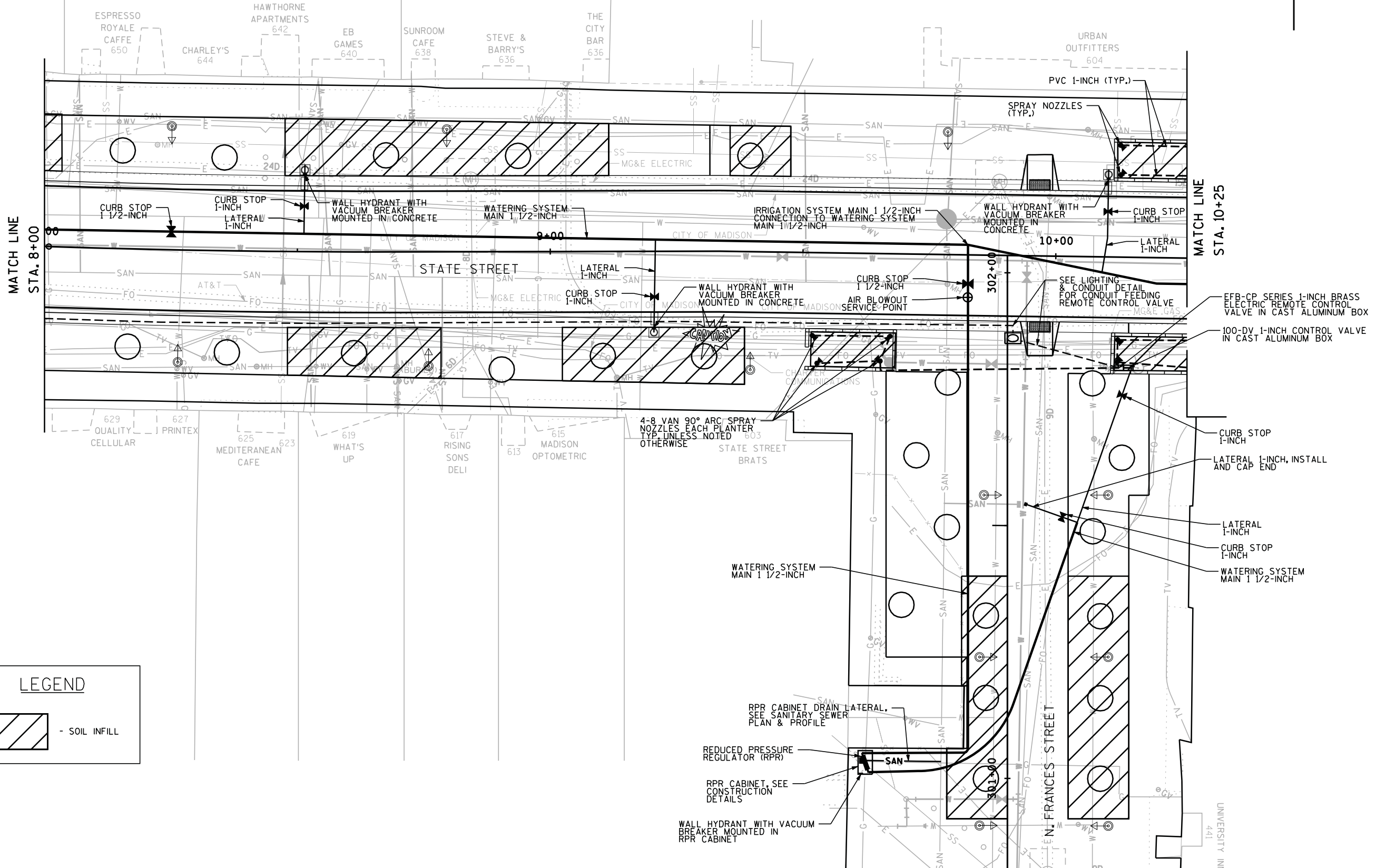
REV. DATE:

ORIGINATOR: CITY OF MADISON, TRAFFIC ENG. DIV.

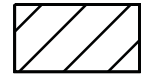
REPRODUCED FROM PROJECT NO 53W0123. NOTE THAT NOT ALL DETAILS MAY BE RELEVANT TO THE HUB PROJECT. CONSTRUCTION ENGINEER SHALL DETERMINE FINAL LIMITS OF REQUIRED RESTORATION.

2

2




**LEGEND**

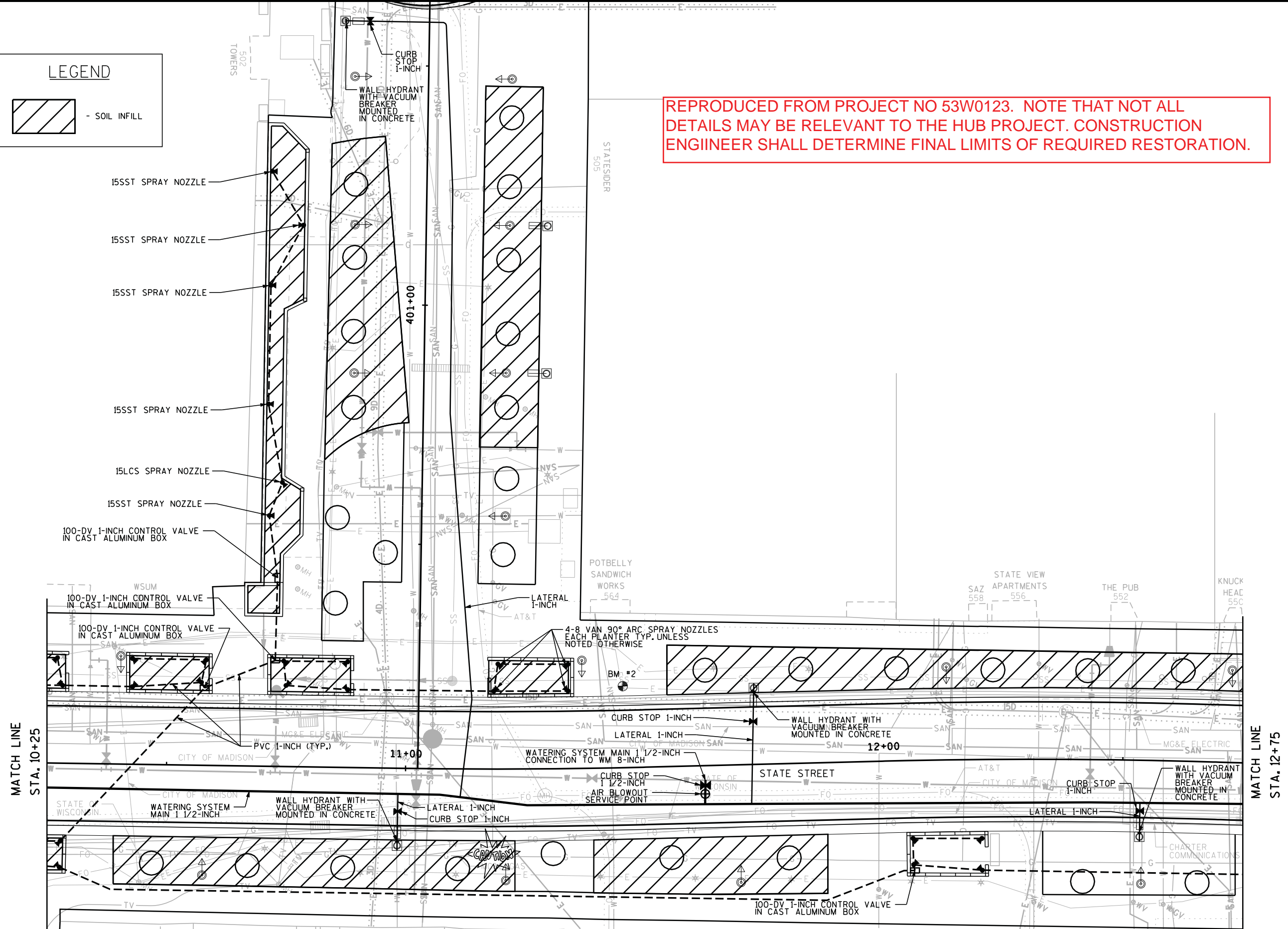
 - SOIL INFILL



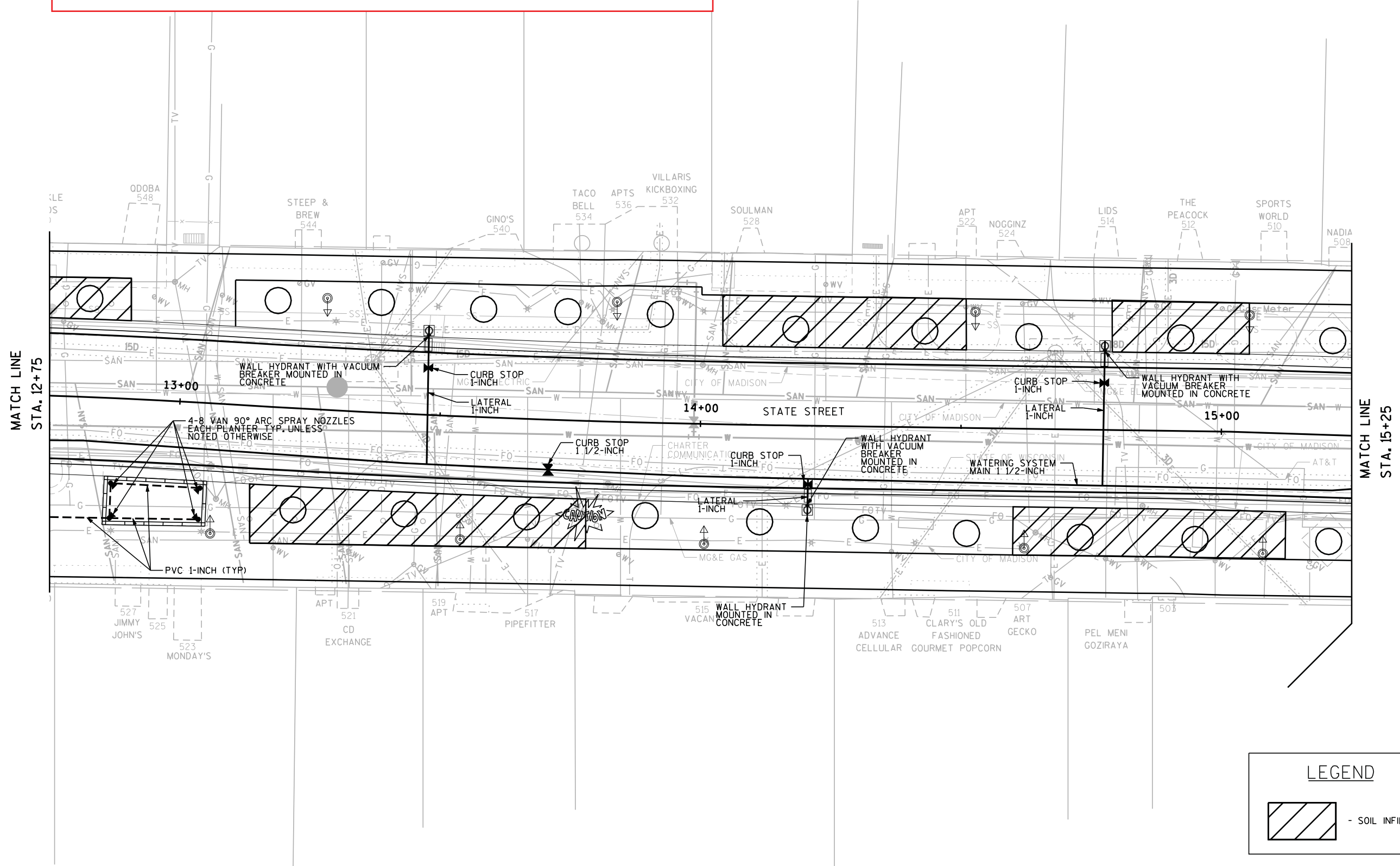
**LEGEND**

 - SOIL INFILL

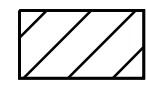
REPRODUCED FROM PROJECT NO 53W0123. NOTE THAT NOT ALL DETAILS MAY BE RELEVANT TO THE HUB PROJECT. CONSTRUCTION ENGINEER SHALL DETERMINE FINAL LIMITS OF REQUIRED RESTORATION.



REPRODUCED FROM PROJECT NO 53W0123. NOTE THAT NOT ALL DETAILS MAY BE RELEVANT TO THE HUB PROJECT. CONSTRUCTION ENGINEER SHALL DETERMINE FINAL LIMITS OF REQUIRED RESTORATION.



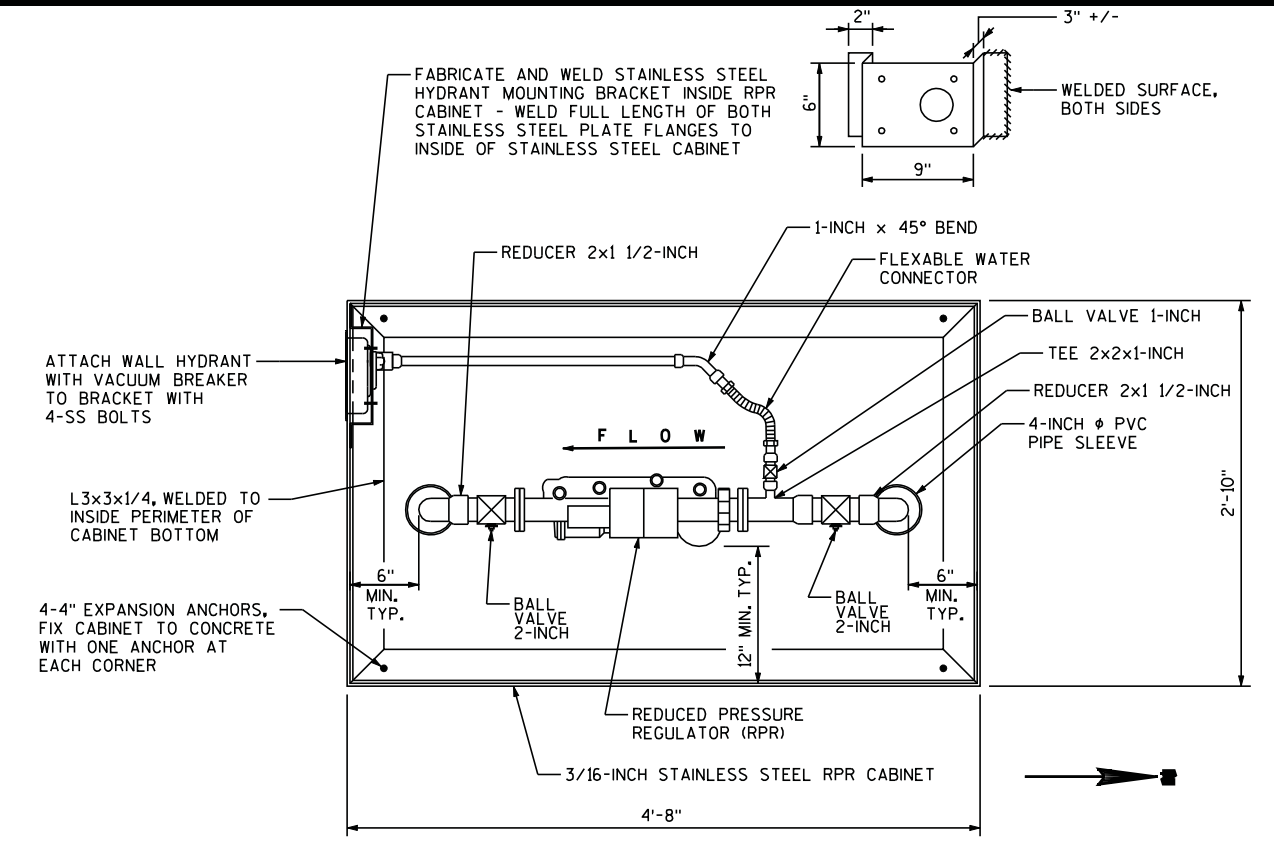
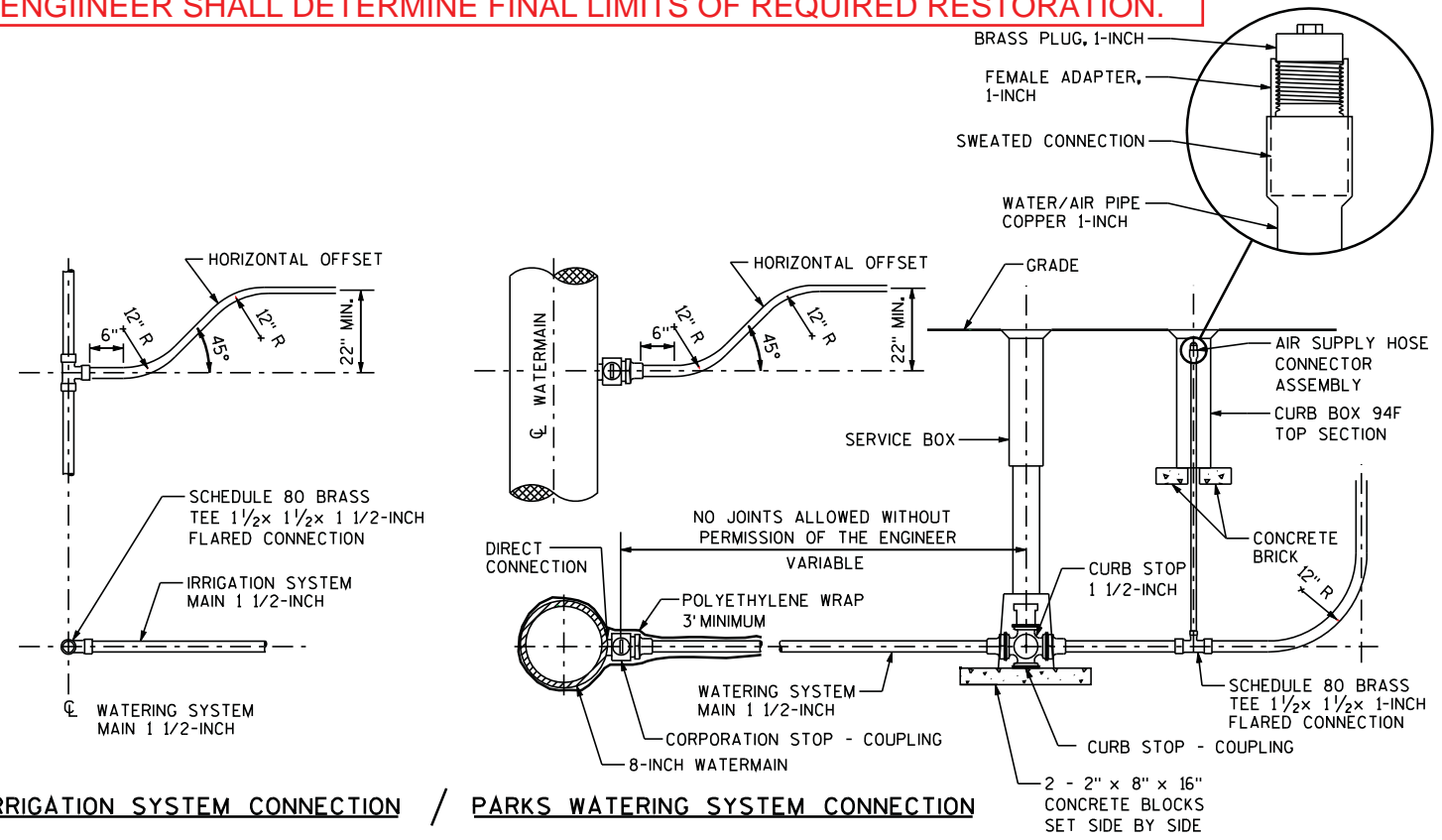
**LEGEND**



- SOIL INFILL

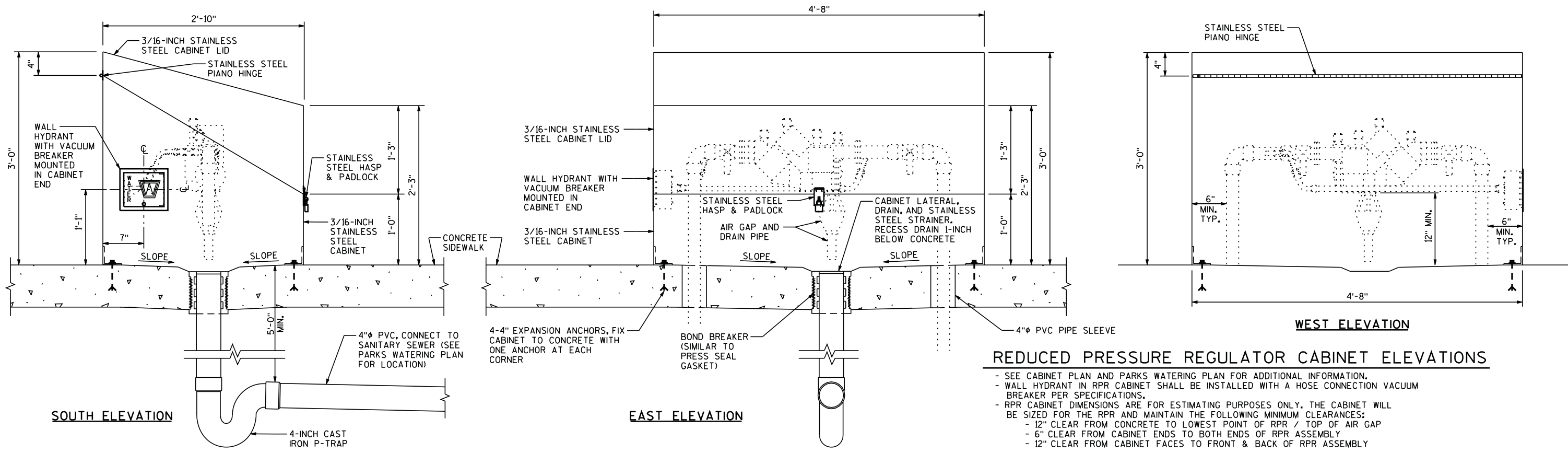


REPRODUCED FROM PROJECT NO 53W0123. NOTE THAT NOT ALL DETAILS MAY BE RELEVANT TO THE HUB PROJECT. CONSTRUCTION ENGINEER SHALL DETERMINE FINAL LIMITS OF REQUIRED RESTORATION.



**WATER SERVICE & AIR SERVICE DETAIL**

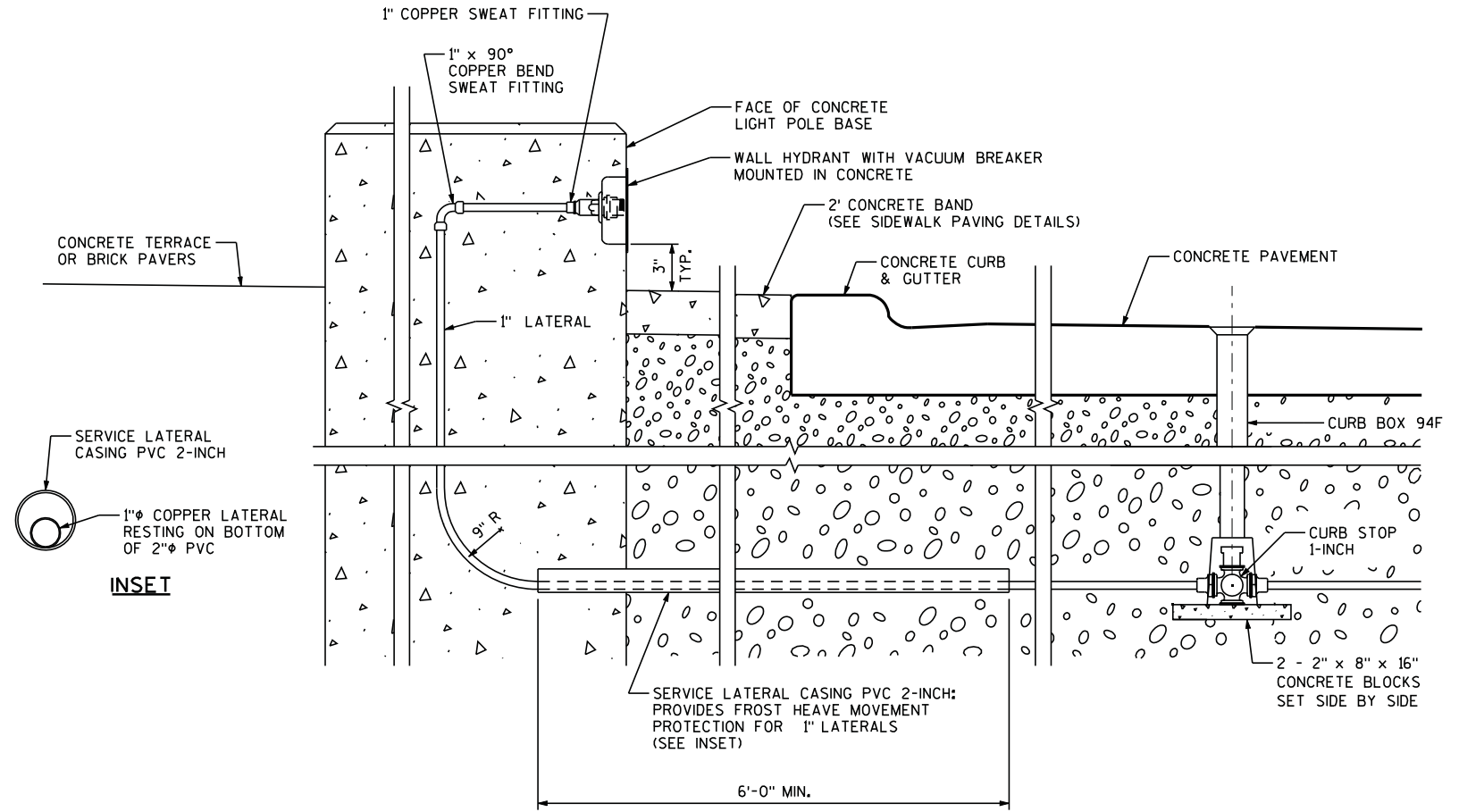
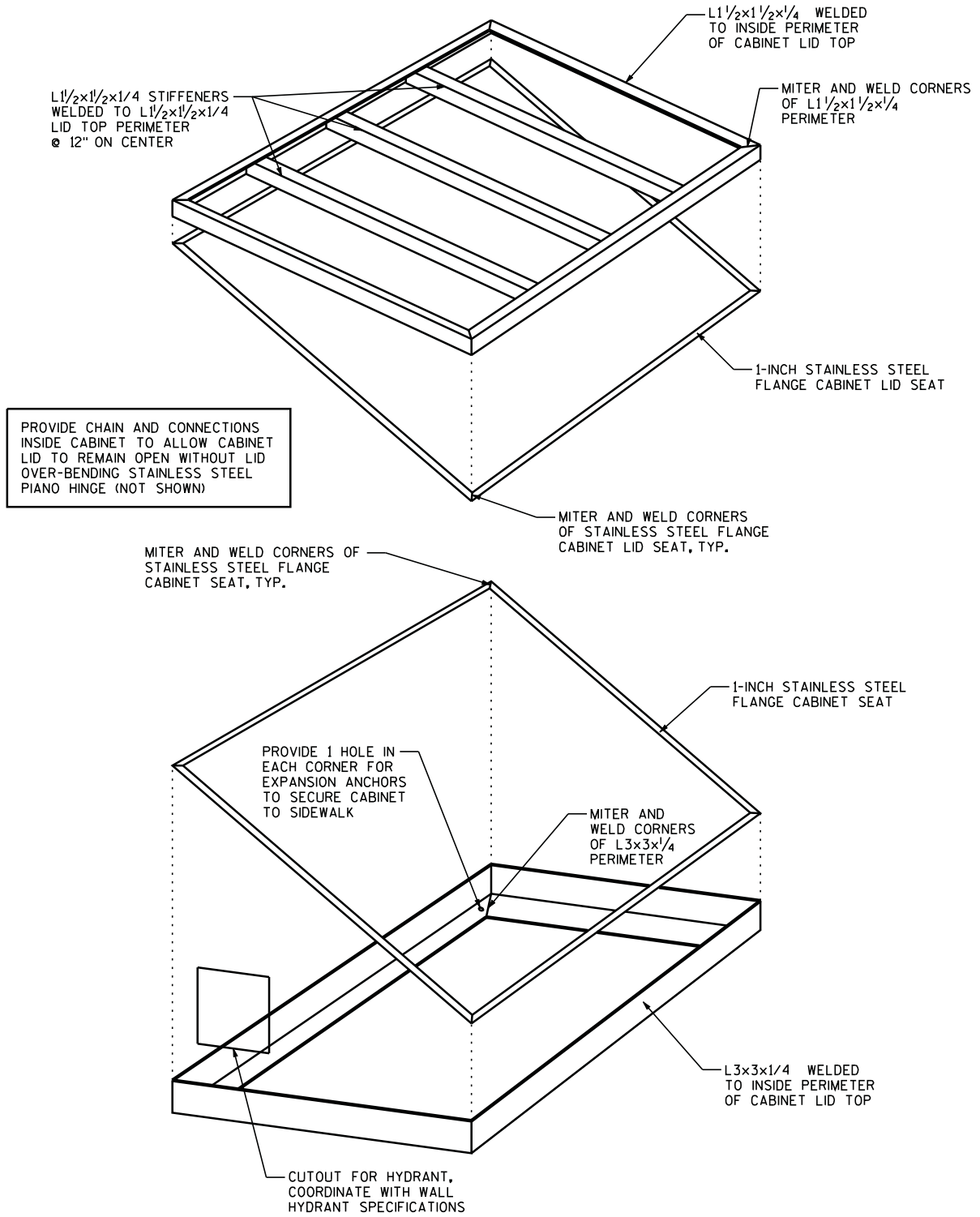
- IRRIGATION SYSTEM (AND FUTURE WATER FEATURE): NON-POTABLE WATER
- ALL PARKS WATERING SYSTEM WALL HYDRANTS: POTABLE WATER



REPRODUCED FROM PROJECT NO 53W0123. NOTE THAT NOT ALL DETAILS MAY BE RELEVANT TO THE HUB PROJECT. CONSTRUCTION ENGINEER SHALL DETERMINE FINAL LIMITS OF REQUIRED RESTORATION.

2

2



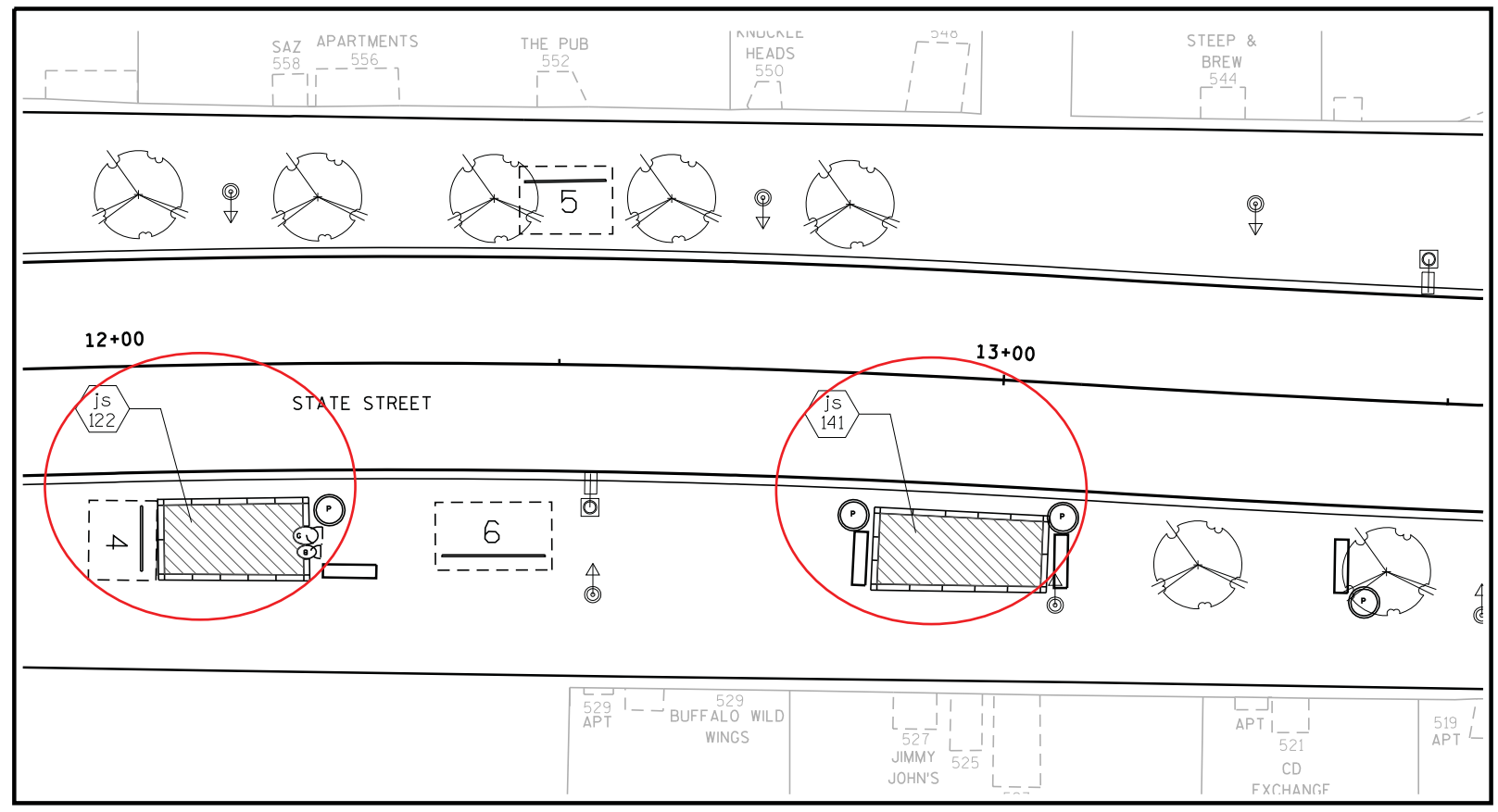
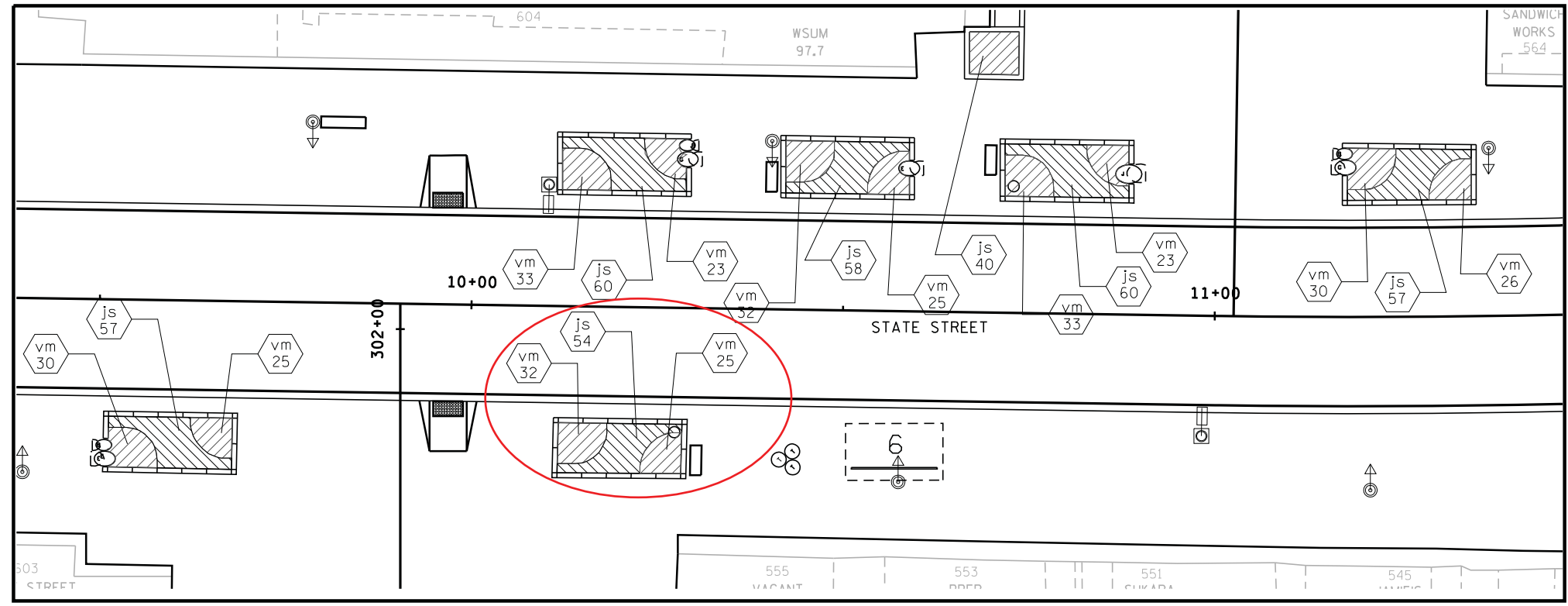


REPRODUCED FROM PROJECT NO. 53W0123. NOTE THAT NOT ALL DETAILS MAY BE RELEVANT TO THE HUB PROJECT.

SHEET A-1 RELEVANT DETAILS FROM PRIOR PROJECT

2

2



PERENNIAL PLANTING DETAIL

REPRODUCED FROM PROJECT NO. 53W0123. NOTE THAT NOT ALL DETAILS MAY BE RELEVANT TO THE HUB PROJECT.

2

2

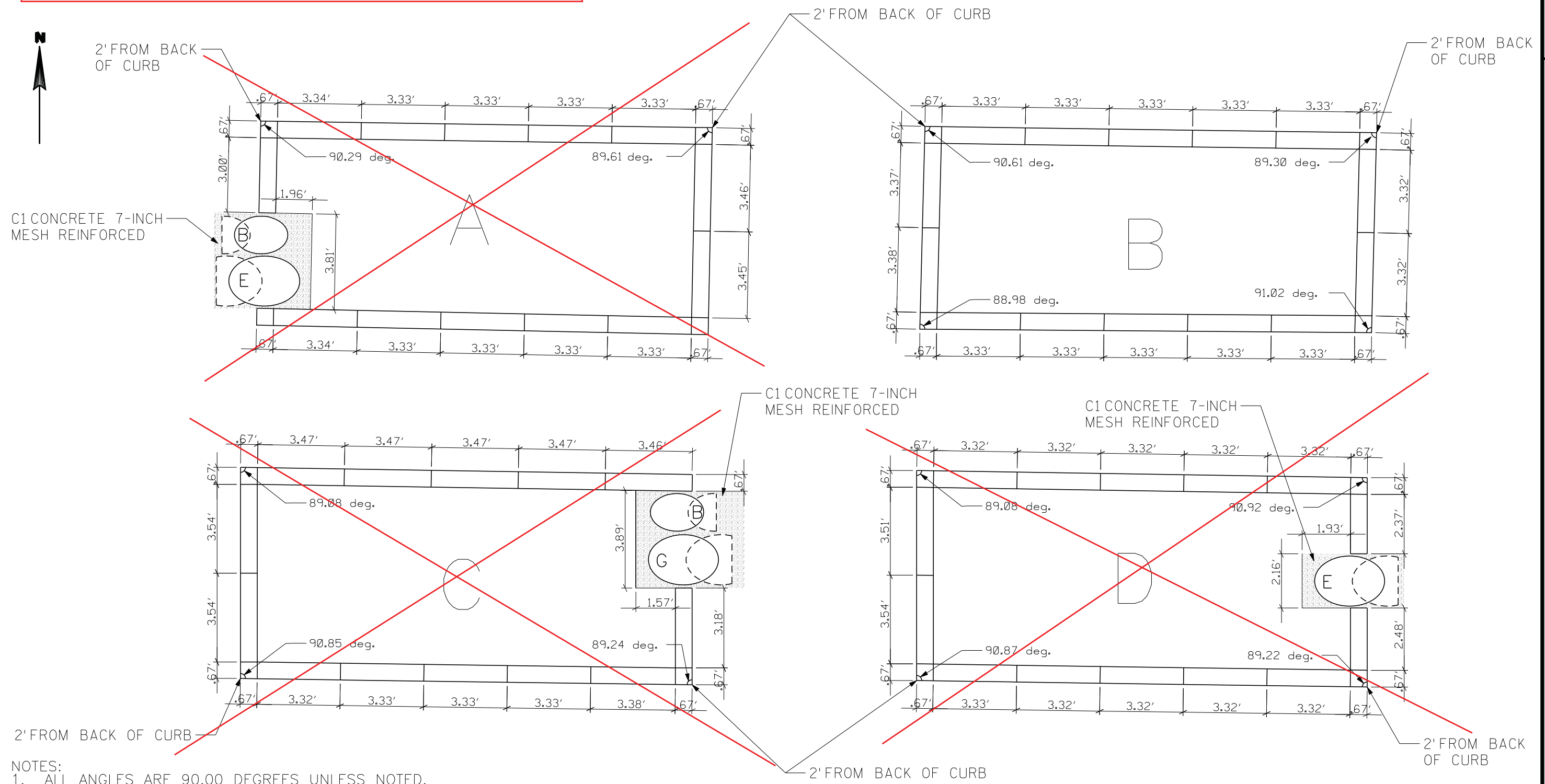
PLANT DATA CHART														
SYM.	COMMON NAME	SCIENTIFIC NAME	TYPE	AVE.	SIZE	ROOT ZONE	MINIMUM BALL OR POT SIZE		MINIMUM HOLE SIZE		BRACE OR GUY	RODENT PROTCT.	FERT. UNITS	MULCH RING DIA.
				MATURE HT.	WHEN PLANTED	MODE	DIAM.	DEPTH	DIAM.	DEPTH				
TALL GROWING DECIDUOUS TREES														
AF	Maple, Armstrong Freeman	Acer fremanii 'Armstrong'	T1	45'	3.5" Cal.	B&B	42"	26"	54"	26"	NO	NO	4	66"
AM	Maple, Miyabi State Street	Acer miyabi 'Morton'	T1	45'	3.5" Cal.	B&B	42"		54"	26"	NO	NO	4	66"
GT	Honeylocust, Skyline	Gleditsia triacanthos var. inermis 'Skyline'	T1	45'	3.5" Cal.	B&B	42"	26"	54"	26"	NO	NO	4	66"
UN	Elm, New Horizon	Ulmus 'New Horizon'	T1	45'	3.5" Cal.	B&B	42"	26"	54"	26"	NO	NO	4	66"
LOW DECIDUOUS TREES														
PC	Pear, Callery	Pyrus calleryana 'Autumn Blaze'	T3	20'	3" Cal.	B&B	32"	20"	44"	20"	NO	NO	4	66"
SHRUBS														
Tc	Hemlock, dwarf	Tsuga canadensis 'Jeddeloh'	T1	36"	18-24" spread	CG			Accommodate Roots		NO	-	NO	BED
GROUNDCOVERS														
is	Spurge, Japanese	Pachysandra terminalis	-	8"	MIN. 2 YEARS	CG	4 - 1/2", two-year old		Accommodate Roots		NO	-	NO	BED
vm	Periwinkle	Vinca minor	-	8"	MIN. 2 YEARS	CG	4 - 1/2", two-year old		Accommodate Roots		NO	-	NO	BED

PLANT QUANTITIES										
SYM.	COMMON NAME	SCIENTIFIC NAME	SIZE WHEN PLANTED	SITE PLANTING PLAN SHEET						TOTALS
				SHT 1	SHT 2	SHT 3	SHT 4	SHT 5	SHT 6	
LARGE DECIDUOUS TREES										
AF	Maple, Armstrong Freeman	Acer fremanii 'Armstrong'	3.5" CAL. B&B	0	3	0	5	0	0	8
AM	Maple, Miyabi State Street	Acer miyabi 'Morton'	3.5" CAL. B&B	0	3	3	0	0	0	6
GT	Honeylocust, Skyline	Gleditsia triacanthos var. inermis 'Skyline'	3.5" CAL. B&B	1	1	3	3	5	0	13
UN	Elm, New Horizon	Ulmus 'New Horizon'	3.5" CAL. B&B	4	3	9	0	0	0	16
SMALL DECIDUOUS TREES										
PC	Pear, Callery	Pyrus calleryana 'Autumn Blaze'	3" CAL. B&B	0	6	9	0	0	0	15
SHRUBS										
Tc	Hemlock, dwarf	Tsuga canadensis 'Jeddeloh'	18-24" spread	0	0	51	0	0	0	51
GROUNDCOVERS										
is	Spurge, Japanese	Pachysandra terminalis	4 - 1/2" CG, 2-yr old	0	0	0	0	0	649	649
vm	Periwinkle	Vinca minor	4 - 1/2" CG, 2-yr old	0	0	0	0	0	337	337

REPRODUCED FROM PROJECT NO. 53W0123. NOTE THAT NOT ALL DETAILS MAY BE RELEVANT TO THE HUB PROJECT.

2

2



- NOTES:
1. ALL ANGLES ARE 90.00 DEGREES UNLESS NOTED.
  2. ALL CORNER AND END PIECES SHALL HAVE A 1.5" BEVEL.
  3. JOINT FILLER AND BLACK JOINT SEALER REQUIRED BETWEEN GRANITE CURB AND GRANITE STREETFORMS.
  4. JOINT SEALER SHALL BE PLACED ON THE THREE (3) EXPOSED EDGES OF THE JOINT FILLER.
  5. WHERE STREETFORMS ARE LOCATED ON TOP OF GRANITE PAVERS, CUT PAVERS AROUND STREETFORMS SO AS TO NOT EXPOSE C1 PAVEMENT.

GRANITE CURB LAYOUT

REPRODUCED FROM PROJECT NO. 53W0123. NOTE THAT NOT ALL DETAILS MAY BE RELEVANT TO THE HUB PROJECT.

2

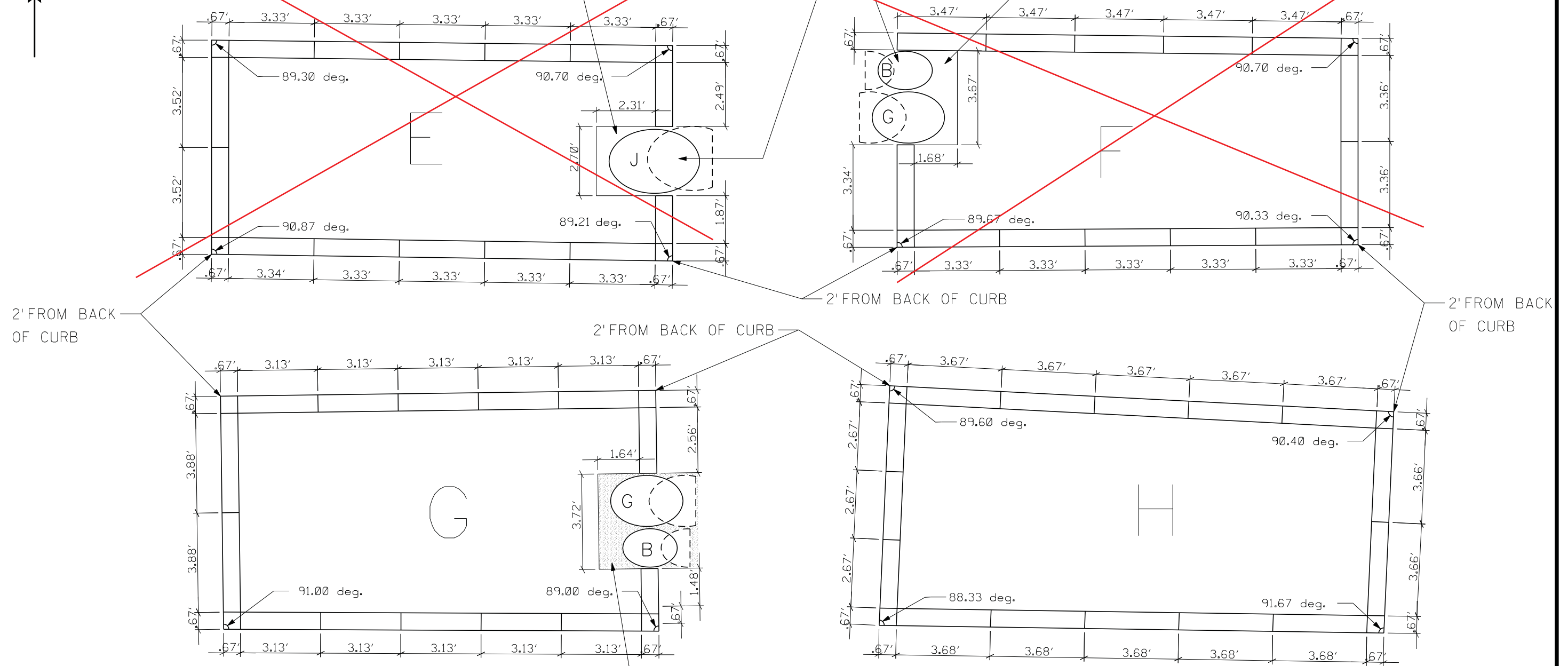
2



GRANITE CURB FOUNDATION SHALL EXTEND BEHIND GRANITE CURB TO SUPPORT THE STREET FORM. (INCIDENTAL TO GRANITE CURB ITEM)

STREETFORMS WILL REST ON GRANITE PAVERS

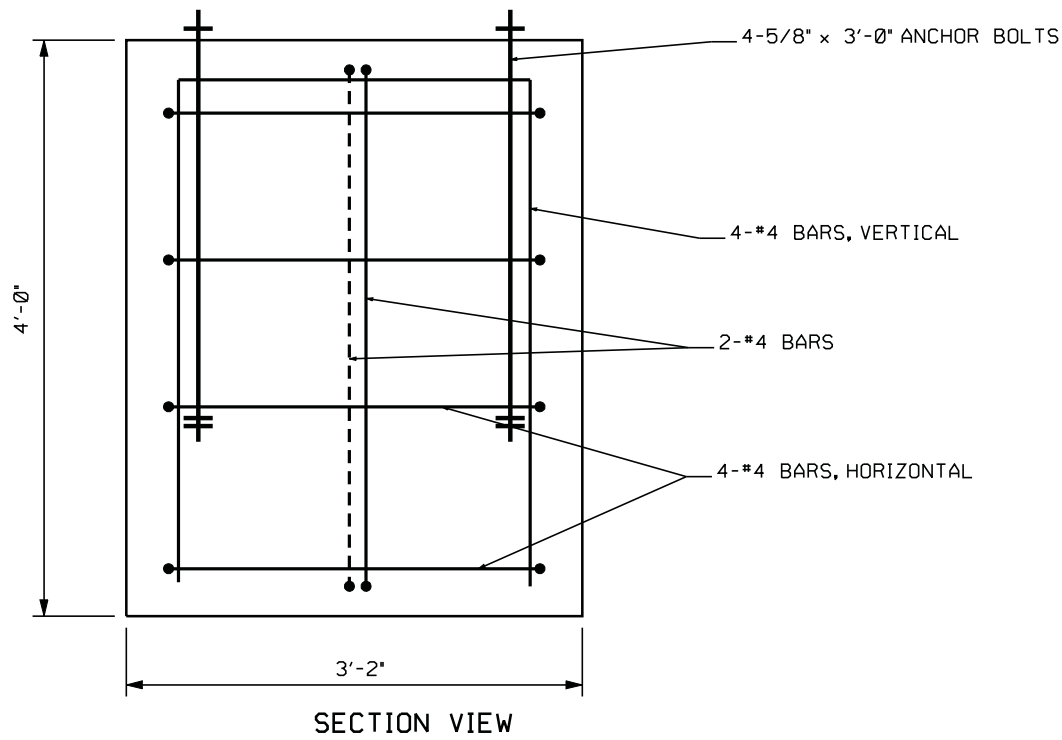
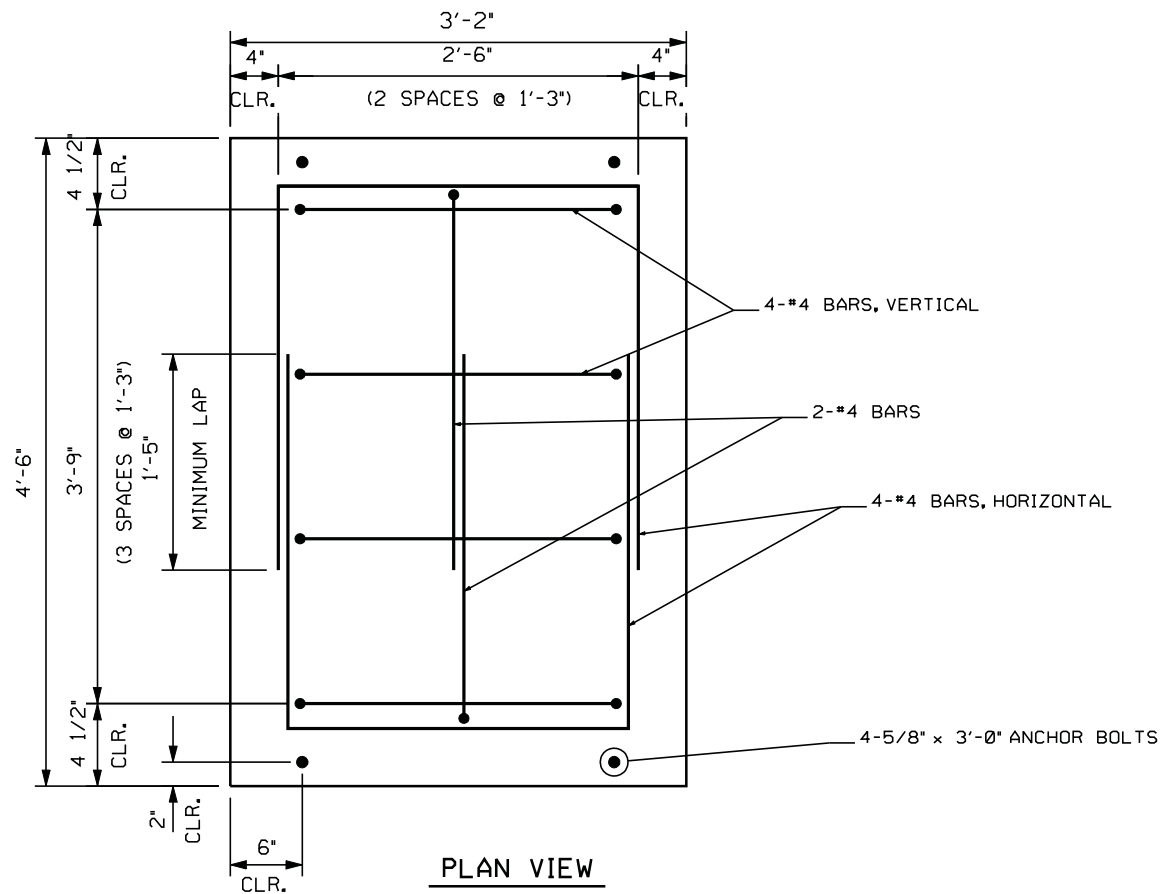
GRANITE CURB FOUNDATION SHALL EXTEND BEHIND GRANITE CURB TO SUPPORT THE STREET FORM. (INCIDENTAL TO GRANITE CURB ITEM)



C1 CONCRETE 7-INCH MESH REINFORCED

**GRANITE CURB LAYOUT**

- NOTES:
1. ALL ANGLES ARE 90.00 DEGREES UNLESS NOTED.
  2. ALL CORNER AND END PIECES SHALL HAVE A 1.5" BEVEL.
  3. JOINT FILLER AND BLACK JOINT SEALER REQUIRED BETWEEN GRANITE CURB AND GRANITE STREETFORMS.
  4. JOINT SEALER SHALL BE PLACED ON THE THREE (3) EXPOSED EDGES OF THE JOINT FILLER.
  5. WHERE STREETFORMS ARE LOCATED ON TOP OF GRANITE PAVERS, CUT PAVERS AROUND STREETFORMS SO AS TO NOT EXPOSE C1 PAVEMENT.



KIOSK FOUNDATION

- SEE KIOSK DETAILS FOR ADDITIONAL INFORMATION  
- TO BE PAID FOR AS KIOSK