

Madison, Wisconsin

# CITY OF MADISON

## CITY ENGINEERING DIVISION

### DEPARTMENT OF PUBLIC WORKS

## PLAN OF PROPOSED IMPROVEMENT

PUBLIC IMPROVEMENT PROJECT APPROVED

APRIL 21, 2015

BY THE COMMON COUNCIL  
OF MADISON, WISCONSIN

PUBLIC IMPROVEMENT DESIGN  
APPROVED BY:

*Michael R. Dailey* 10/21/2015  
City Engineer Date

STREET PLAN  
DESIGNED BY:



INDEX OF SHEETS

SHEET NO.	TITLE
1	
D1	STANDARD NOTES
D2	TYPICAL SECTIONS
D3	DETAILS
E1	ELECTRICAL PLAN
M1	MARKING PLAN
P1	STREET PLAN
U1	UTILITY PLAN

202 E. WASHINGTON AVENUE – AC HOTEL

CITY PROJECT NO. 10874

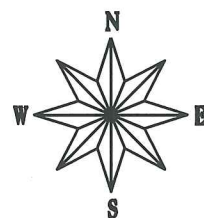
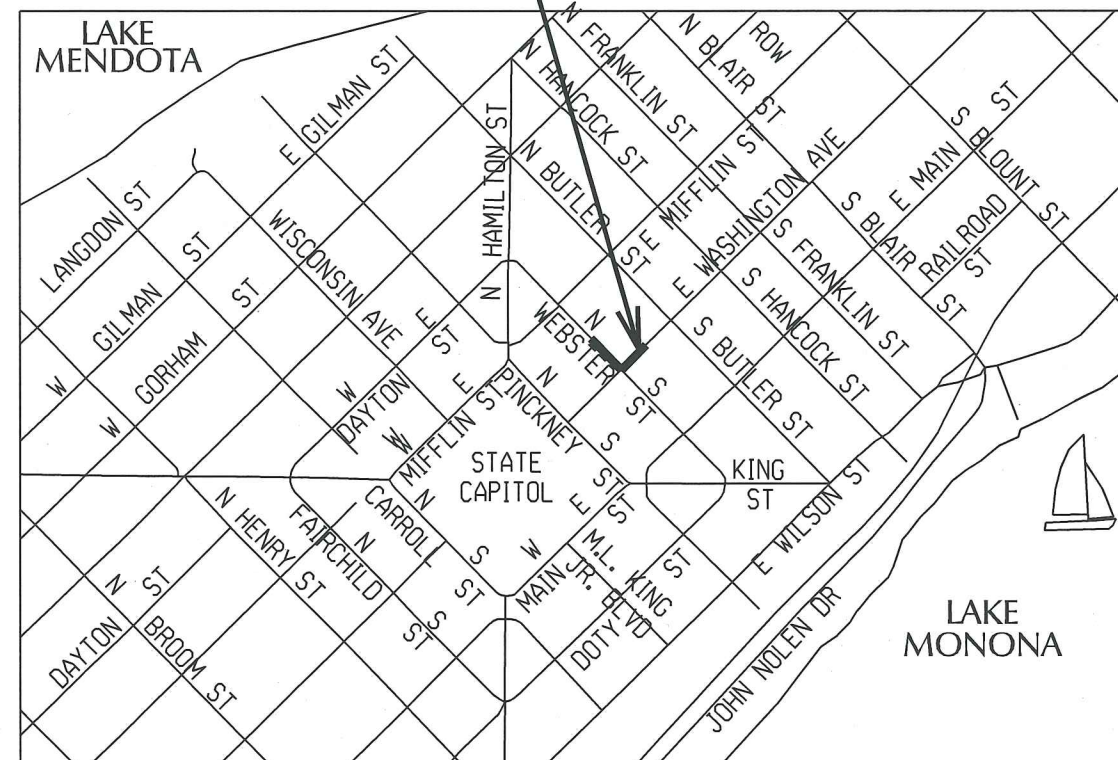
CONTRACT NO. 2405

MUNIS NO. 10874

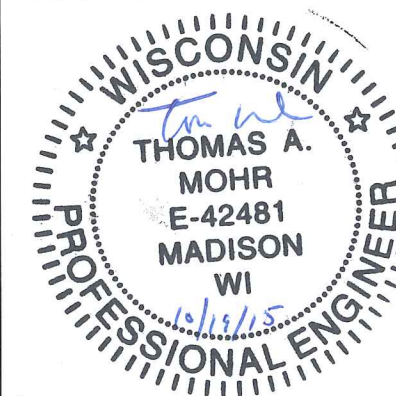
PROJECT LOCATION:

1 N. WEBSTER ST.

CONVENTIONAL SIGNS	
FIELD VERIFY ALL UTILITY LOCATIONS	
GAS	— G —
STORM SEWER	— ST —
SANITARY SEWER	— SAN —
WATER	— W —
OVERHEAD ELECTRIC	— OH —
POWER POLE	□
ADA COMPLIANT RAMP W/ DETECTABLE WARNING FIELD	▣
COMBUSTIBLE FLUIDS	☀



MARKING PLAN  
DESIGNED BY:



STORM SEWER  
DESIGNED BY:



ELECTRICAL PLAN  
DESIGNED BY:



SANITARY SEWER  
DESIGNED BY:

NO PUBLIC SEWER  
MAIN.  
LATERAL PLAN ONLY

9/21/15 *John Mah*

CONTRACTOR/DEVELOPER SHALL SUBMIT A TRAFFIC CONTROL PLAN TO CITY TRAFFIC ENGINEERING AT LEAST 10 WORKING DAYS PRIOR TO THE START OF WORK. WORK WITHIN THE RIGHT-OF-WAY SHALL NOT BEGIN UNTIL THE TRAFFIC CONTROL PLAN IS APPROVED.

ANY PAVEMENT MARKINGS THAT ARE REMOVED OR DAMAGED SHALL BE REPLACED BY THE DEVELOPER/CONTRACTOR AS DIRECTED BY CITY TRAFFIC ENGINEERING.

THE LOCATION AND INFORMATION FOR PROPOSED NEW TREES, IN THE PUBLIC RIGHT OF WAY OR ON PUBLIC LANDS ARE APPROXIMATE AND ARE SHOWN FOR REFERENCE ONLY.

CONTRACTOR SHALL CONTACT DEAN KAHL WITH CITY FORESTRY (266-4891 OR 266-4816) AT LEAST ONE WEEK PRIOR TO PLANTING TO ALLOW FORESTRY TO MARK THE PLANTING SITES AND REVIEW PLANTING SPECIFICATIONS WITH THE LANDSCAPING CONTRACTOR. TREE PLANTING WITHIN THE PUBLIC RIGHT OF WAY OR ON PUBLIC LANDS SHALL BE APPROVED BY THE CITY FORESTER PRIOR TO INSTALLATION.

NO TREES IN THE RIGHT OF WAY OR ON PUBLIC LANDS SHALL BE TRIMMED, PRUNED, REMOVED OR ADVERSELY AFFECTED IN ANY WAY UNTIL THE DEVELOPER HAS RECEIVED WRITTEN PERMISSION FROM THE CITY ENGINEER OR CITY FORESTER. SAID WRITTEN PERMISSION SHALL INCLUDE LANGUAGE INDICATING THAT SECTION 10.101 OF THE MADISON GENERAL ORDINANCES AND ADMINISTRATIVE PROCEDURE MEMORANDUM NO. 6-2, REFERING TO NOTIFICATION OF PROPERTY OCCUPANTS AND/OR OWNERS, HAS BEEN COMPLIED WITH.

ALL PAVEMENT WITHIN THE RIGHT-OF-WAY SHALL BE TYPE C PAVEMENT.

ALL GUTTERS SHALL DRAIN WITH A MINIMUM GRADES OF 0.5% TOWARD STORM SEWER INLETS.

THE CROSS SLOPE OF SIDEWALKS AND BARRIER FREE SIDEWALK CURB RAMPS SHALL BE 2%. THE LONGITUDINAL GRADE OF BARRIER FREE SIDEWALK CURB RAMPS SHALL NOT EXCEED 8.33%. ALL SIDEWALK RAMPS SHALL BE CONSTRUCTED ACCORDING TO S.D.D. 3.03. AT ALL OTHER LOCATIONS THE LONGITUDINAL GRADE OF SIDEWALKS SHALL NOT EXCEED 5.0 % OR THE ADJACENT STREET GRADE WHICHEVER IS GREATER NOR BE LESS THAN 0.4% AND SHALL DRAIN TOWARD STORM SEWER INLETS. SIDE SLOPES WITHIN TEN FEET OF A PUBLIC SIDEWALK SHALL NOT EXCEED 4:00:1. ALL SIDEWALK AND SIDEWALK RAMP ELEVATIONS AND GRADES SHALL BE FIELD VERIFIED AND SET TO COMPLY WITH THE CITY OF MADISON STANDARD SPECIFICATIONS AND THE A.D.A. GUIDELINES.

OBTAIN A PRINT OUT OF THE ALIGNMENT FROM THE CITY ENGINEER PRIOR TO STAKING THIS PROJECT.

CURB STATION AND OFFSETS SHALL BE TO THE FACE OF CURB UNLESS OTHERWISE INDICATED. CURB ELEVATIONS SHALL BE TO THE TOP OF CURB (OR EXTENDED TOP OF CURB FOR DRIVEWAYS OR RAMPS) UNLESS OTHERWISE INDICATED.

POWER POLES AND OTHER OBSTRUCTIONS SHALL BE MOVED TO PROVIDE 2 FEET MINIMUM OF CLEAR DISTANCE FROM ANY FACE OF CURB OR EDGE OF SIDEWALK.

ANY INFORMATION SHOWN ON THIS PLAN, WHICH IS NOT PART OF THIS PROJECT, IS PRELIMINARY AND NOT FOR CONSTRUCTION.

THERE MAY BE EXISTING UTILITIES OR OTHER FEATURES WHICH ARE EITHER NOT SHOWN OR SHOWN INCORRECTLY ON THIS PLAN. IT IS THE RESPONSIBILITY OF THE DEVELOPER TO LOCATE AND IDENTIFY ALL UTILITIES AND TOPOGRAPHY WHICH MAY AFFECT THE CONSTRUCTION OF THESE IMPROVEMENTS.

ALL PERMANENT SIGNING AND POSTING WILL BE DETERMINED AND PROVIDED BY THE TRAFFIC ENGINEERING DIVISION, FOLLOWING CONSTRUCTION OF THESE IMPROVEMENTS.

THE DEVELOPER SHALL PROVIDE, INSTALL AND MAINTAIN ALL STREET END BARRICADES, SIGNING AND TRAFFIC CONTROL, AS REQUIRED BY THE CITY TRAFFIC ENGINEER.

PAVEMENT SAWCUTS SHALL BE AS DIRECTED BY THE CITY CONSTRUCTION ENGINEER. SAWCUTS SHOWN ON THE PLAN ARE APPROXIMATE.

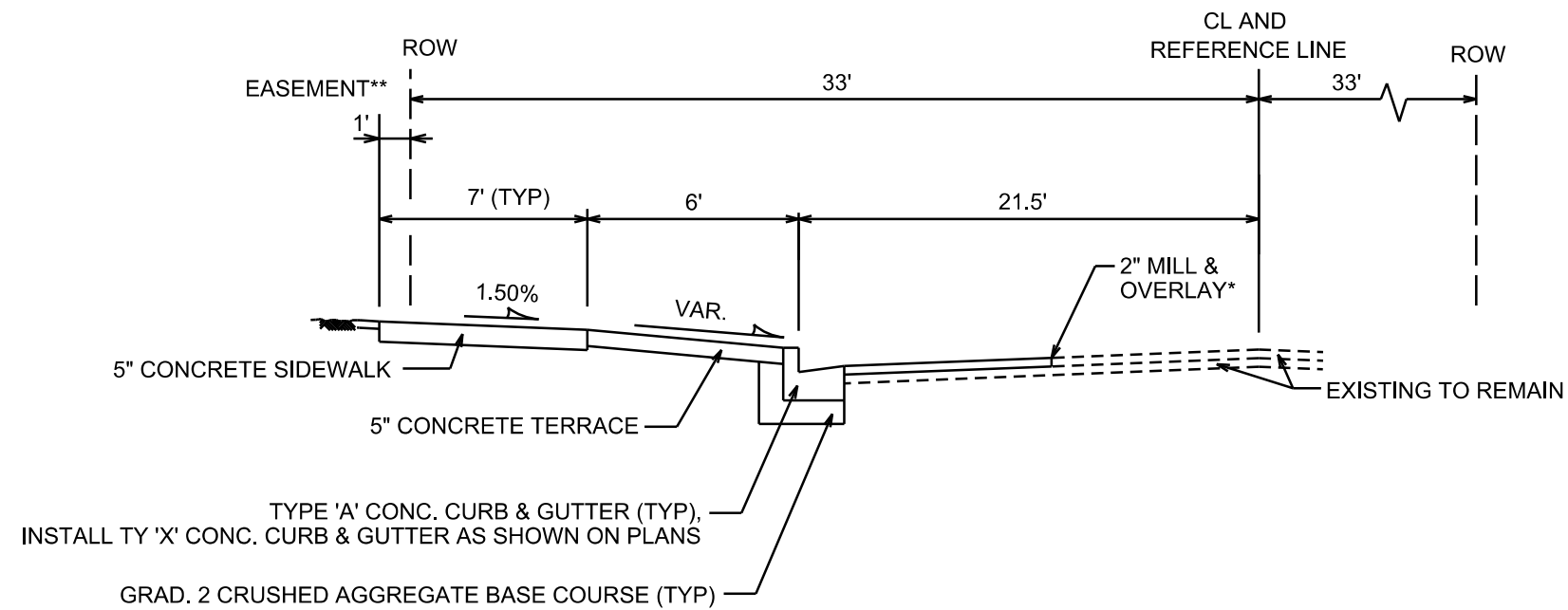
DAMAGE TO ANY EXISTING CURB, PAVEMENT, SIDEWALK, ETC. THAT IS TO REMAIN SHALL BE REPAIRED BY THE DEVELOPER/CONTRACTOR AS DIRECTED BY THE ENGINEER.

PLOT SCALE: \_\_\_\_\_

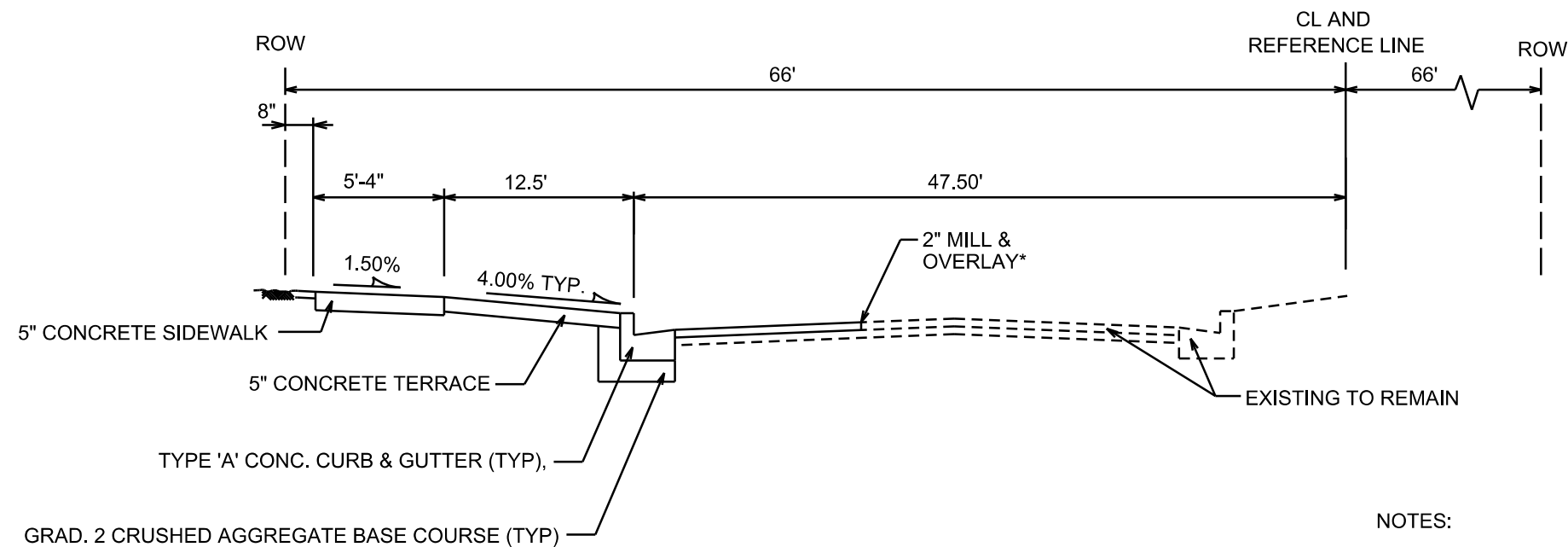
PLOT NAME: \_\_\_\_\_

REV. DATE: \_\_\_\_\_

ORIGINATOR: CITY OF MADISON, STREETS DIVISION



**TYPICAL SECTION**  
N. WEBSTER STREET  
NOT TO SCALE



**TYPICAL SECTION**  
E. WASHINGTON AVENUE  
NOT TO SCALE

- NOTES:
- \* MILL & OVERLAY LIMITS ARE APPROXIMATE. PATCH PAVEMENT PER CITY'S PATCHING CRITERIA. MILL & OVERLAY MAY NOT BE NECESSARY IF PAVEMENT IS UNDAMAGED, AS DECIDED BY THE CONSTRUCTION ENGINEER. FINAL MILL & OVERLAY LIMITS TO BE DETERMINED BY THE CONSTRUCTION ENGINEER.
  - \*\* PUBLIC ACCESS SIDEWALK EASEMENT. SEE RECORDED DOCUMENT NO. 5175143

PLOT SCALE: \_\_\_\_\_

PLOT NAME: \_\_\_\_\_

REV. DATE: \_\_\_\_\_

ORIGINATOR: CITY OF MADISON, STREETS DIVISION

**SCALE 1"=5'**

**NOTE:**

\*W = THE VAULT CHIMNEY GRATES CORNER ELEVATION. THE ELEVATIONS WERE COMPUTED AT THE STATION OFFSET LOCATIONS SHOWN BASED OFF OF THE SURVEYED LOCATION OF FORMWORK. IF FIELD CHANGES OCCUR SUCH THAT THE GRATE CORNERS ARE NO LONGER AT THE SAME STATION OFFSET LOCATIONS, CONTACT THE DESIGN ENGINEER FOR UPDATED GRADES. THE DESIGN ENGINEER IS JOHN SAPP (608) 261-5580 JSAPP@CITYOFMADISON.COM

STA 50+79.97, LT 67.95'  
919.60 W\*/GRATE CRNR.

STA 50+82.97, LT 67.97'  
919.55 W\*/GRATE CRNR.

STA 50+79.99, LT 64.95'  
919.55 W\*/GRATE CRNR.

STA 50+82.99, LT 64.97'  
919.50 W\*/GRATE CRNR.

STA 50+86.21, LT 62.15'  
919.40 W\*/GRATE CRNR.

STA 50+93.88, LT 62.19'  
919.26 W\*/GRATE CRNR.

STA 50+86.24, LT 56.48'  
919.31 W\*/GRATE CRNR.

STA 50+93.91, LT 56.52'  
919.17 W\*/GRATE CRNR.

STA 50+97.04, LT 53.70'  
919.01 W\*/GRATE CRNR.

STA 51+00.04, LT 53.72'  
918.94 W\*/GRATE CRNR.

STA 51+00.06, LT 50.72'  
918.86 W\*/GRATE CRNR.

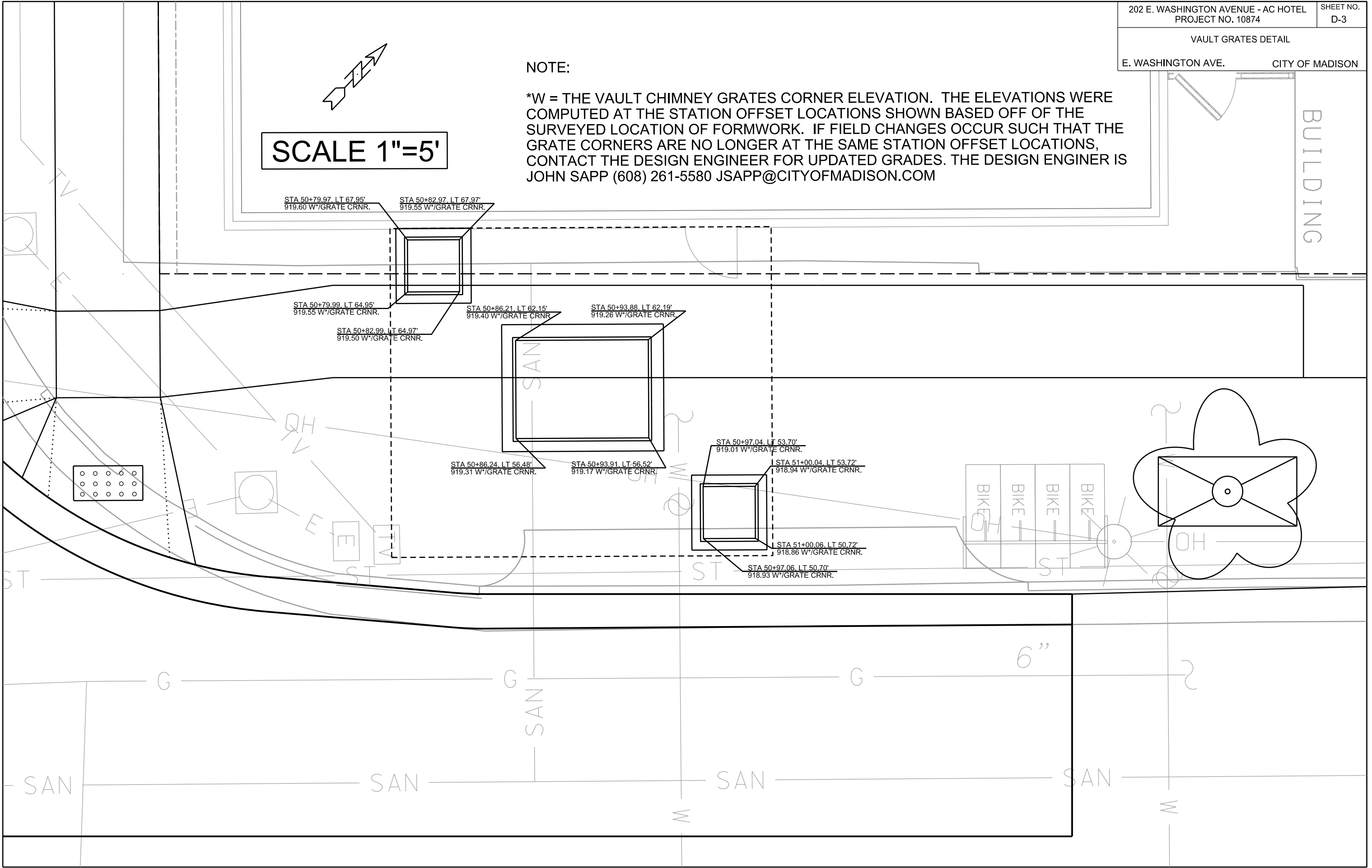
STA 50+97.06, LT 50.70'  
918.93 W\*/GRATE CRNR.

PLOT SCALE: \_\_\_\_\_

PLOT NAME: \_\_\_\_\_

REV. DATE: \_\_\_\_\_

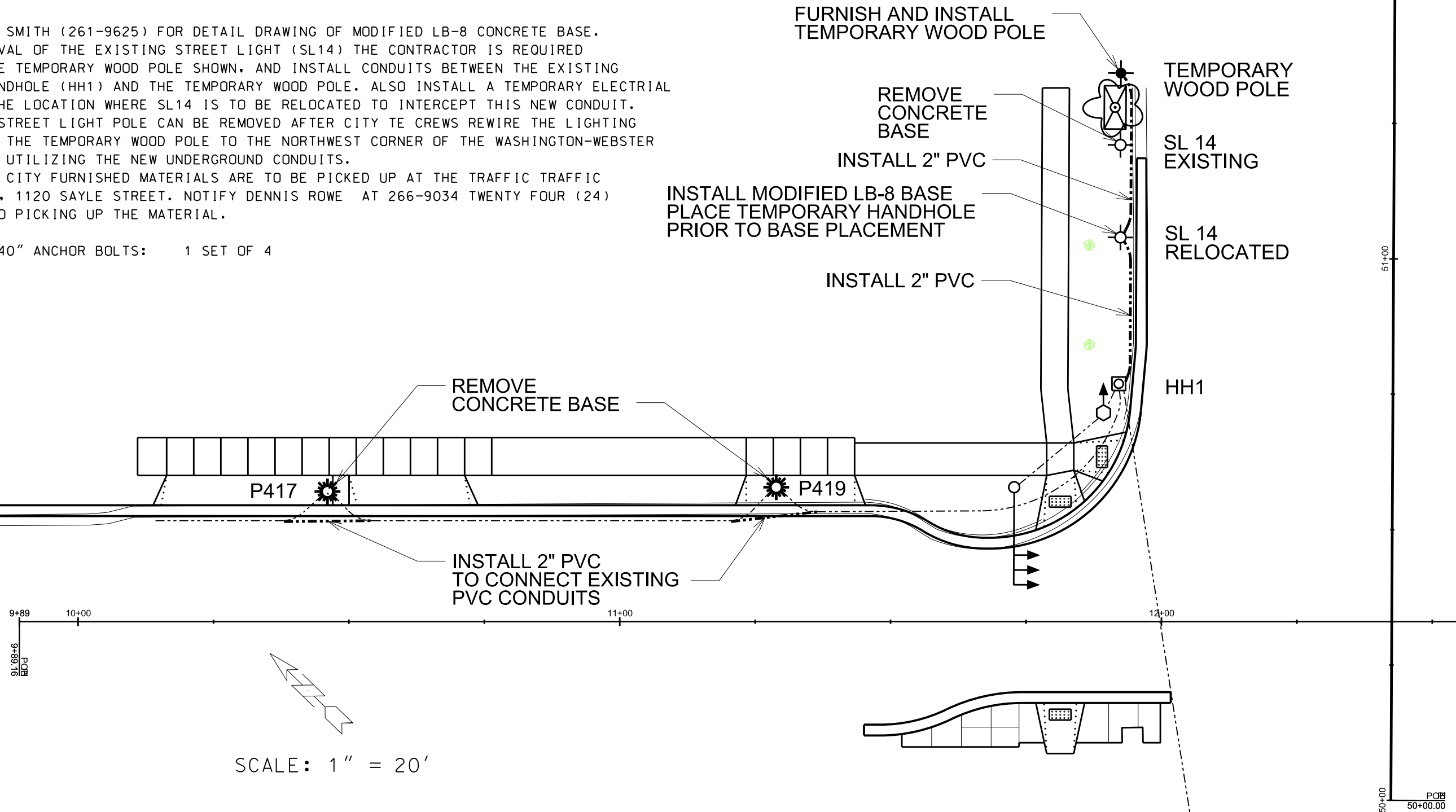
ORIGINATOR: CITY OF MADISON, STREETS DIVISION



GENERAL ELECTRICAL NOTES:

1. ALL LOCATIONS ARE APPROXIMATE. THE TRAFFIC ENGINEER SHALL APPROVE FINAL LOCATIONS INCLUDING SETBACK IN THE FIELD. AFTER CONTRACTOR SURVEYS STAKING, THE CONTRACTOR SHALL NOTIFY BRIAN SMITH (261-9625) CITY TRAFFIC ENGINEERING, AT LEAST 24-HOURS IN ADVANCE OF NEEDING BASE LOCATIONS MARKED.
2. THE CONTRACTOR SHALL DO ALL WORK IN ACCORDANCE WITH CITY OF MADISON STANDARD SPECIFICATIONS FOR PUBLIC WORKS CONSTRUCTION 2015 EDITION AND ALL ADDENDUMS THERETO. ALL CONDUIT SHALL BE PVC SCHEDULE 80 UNDER PAVEMENT OR SCHEDULE 40 OTHERWISE. PULL WIRE REQUIRED AS PER STANDARD SPECIFICATIONS.
3. THE CONTRACTOR SHALL CALL MIKE CHRISTOPH (266-4767) AT THE TRAFFIC ENGINEERING SHOP AT LEAST 24-HOURS IN ADVANCE OF POURING BASES OR BURYING CONDUIT TO ARRANGE FOR INSPECTION.
4. CONTACT BRIAN SMITH (261-9625) FOR DETAIL DRAWING OF MODIFIED LB-8 CONCRETE BASE.
5. PRIOR TO REMOVAL OF THE EXISTING STREET LIGHT (SL14) THE CONTRACTOR IS REQUIRED TO INSTALL THE TEMPORARY WOOD POLE SHOWN, AND INSTALL CONDUITS BETWEEN THE EXISTING ELECTRICAL HANDHOLE (HH1) AND THE TEMPORARY WOOD POLE. ALSO INSTALL A TEMPORARY ELECTRICAL HANDHOLE AT THE LOCATION WHERE SL14 IS TO BE RELOCATED TO INTERCEPT THIS NEW CONDUIT. THE EXISTING STREET LIGHT POLE CAN BE REMOVED AFTER CITY TE CREWS REWIRE THE LIGHTING CIRCUITS FROM THE TEMPORARY WOOD POLE TO THE NORTHWEST CORNER OF THE WASHINGTON-WEBSTER INTERSECTION UTILIZING THE NEW UNDERGROUND CONDUITS.
6. THE FOLLOWING CITY FURNISHED MATERIALS ARE TO BE PICKED UP AT THE TRAFFIC TRAFFIC OPERATION SHOP, 1120 SAYLE STREET. NOTIFY DENNIS ROWE AT 266-9034 TWENTY FOUR (24) HOURS PRIOR TO PICKING UP THE MATERIAL.

1" X 40" ANCHOR BOLTS: 1 SET OF 4



SCALE: 1" = 20'

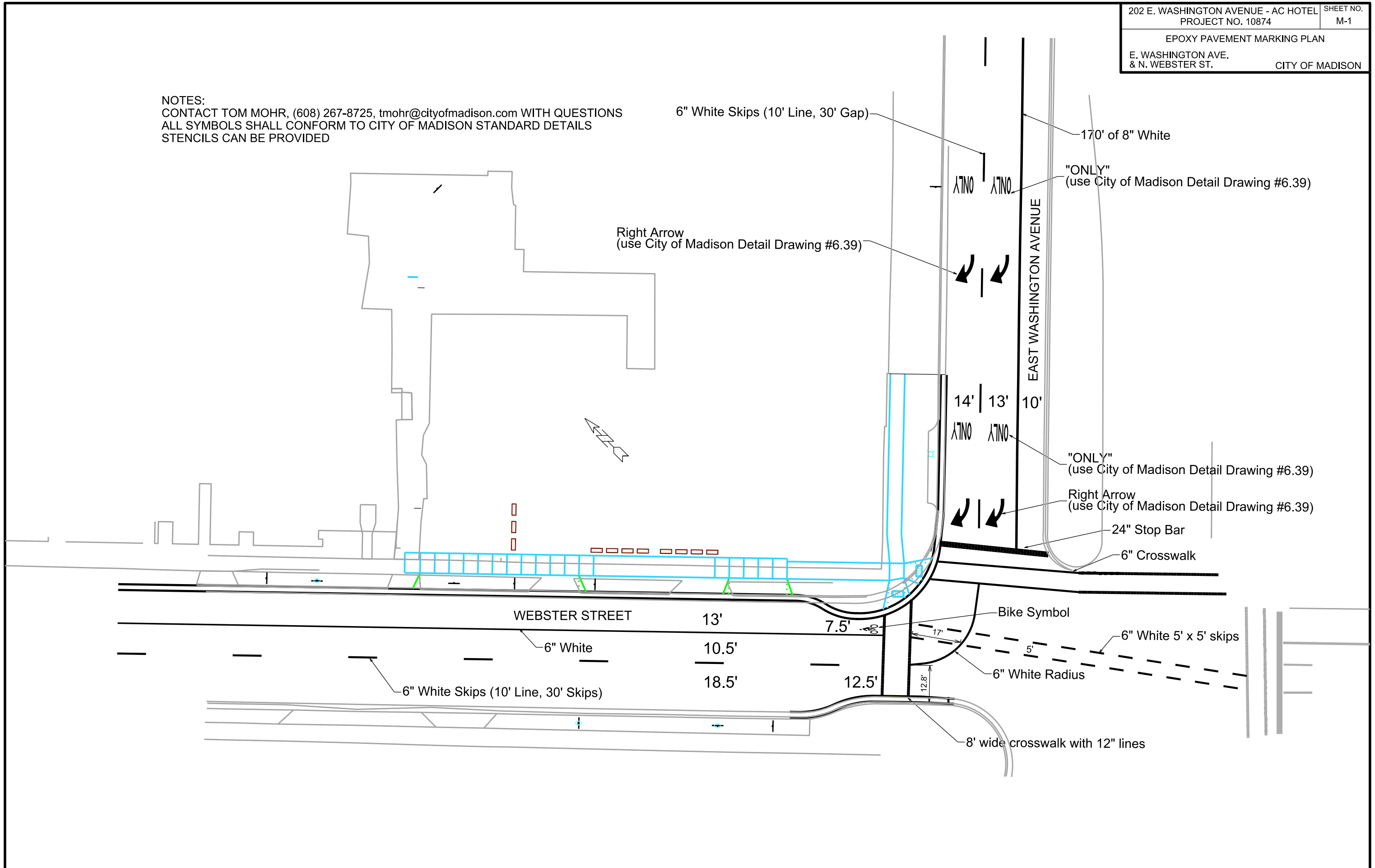
NOTES:  
 CONTACT TOM MOHR, (608) 267-8725, tmohr@cityofmadison.com WITH QUESTIONS  
 ALL SYMBOLS SHALL CONFORM TO CITY OF MADISON STANDARD DETAILS  
 STENCILS CAN BE PROVIDED

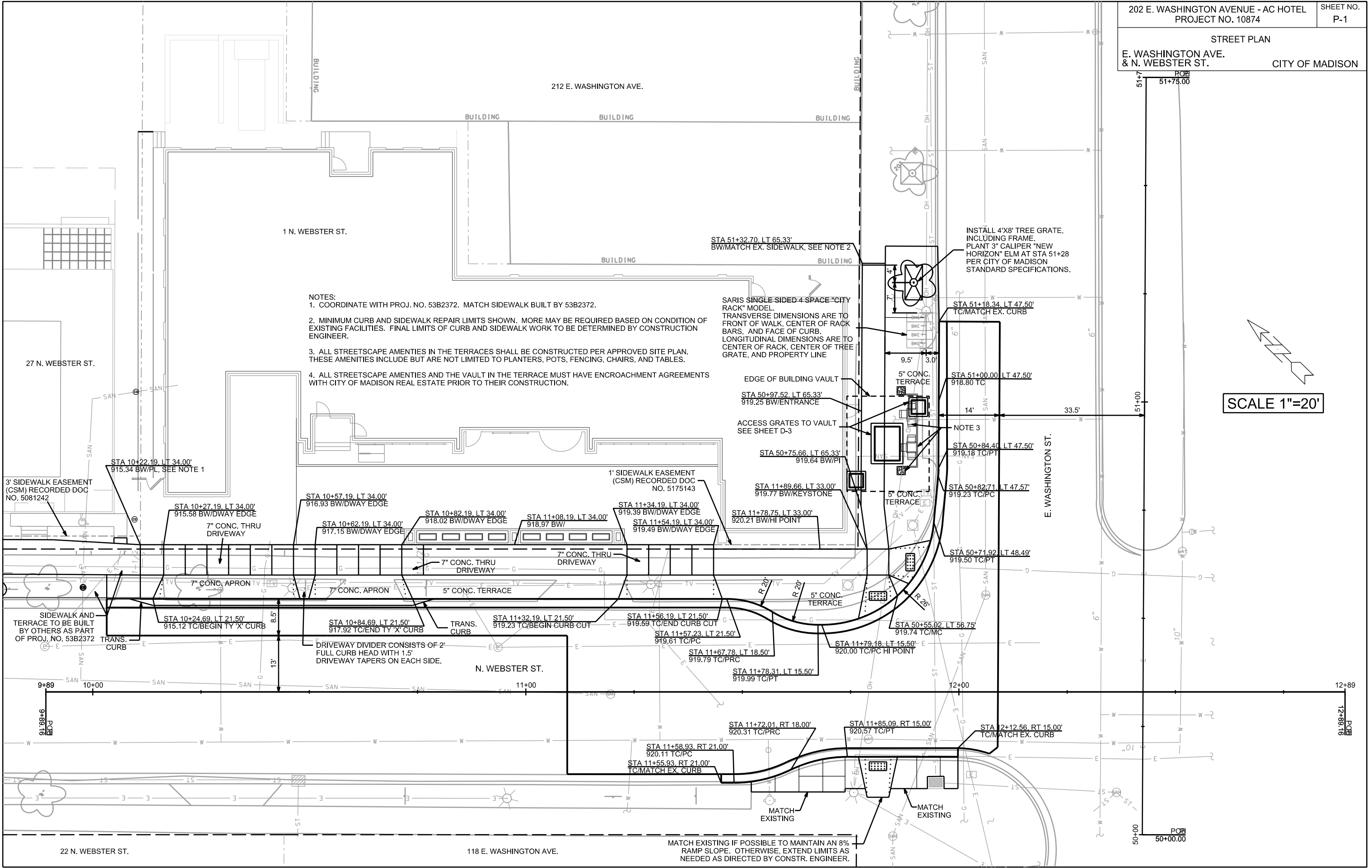
PLOT SCALE:

PLOT NAME:

REV. DATE:

ORIGINATOR: CITY OF MADISON, TRAFFIC ENG. DIV.





- NOTES:
- COORDINATE WITH PROJ. NO. 53B2372. MATCH SIDEWALK BUILT BY 53B2372.
  - MINIMUM CURB AND SIDEWALK REPAIR LIMITS SHOWN. MORE MAY BE REQUIRED BASED ON CONDITION OF EXISTING FACILITIES. FINAL LIMITS OF CURB AND SIDEWALK WORK TO BE DETERMINED BY CONSTRUCTION ENGINEER.
  - ALL STREETScape AMENITIES IN THE TERRACES SHALL BE CONSTRUCTED PER APPROVED SITE PLAN. THESE AMENITIES INCLUDE BUT ARE NOT LIMITED TO PLANTERS, POTS, FENCING, CHAIRS, AND TABLES.
  - ALL STREETScape AMENITIES AND THE VAULT IN THE TERRACE MUST HAVE ENCROACHMENT AGREEMENTS WITH CITY OF MADISON REAL ESTATE PRIOR TO THEIR CONSTRUCTION.

SARIS SINGLE-SIDED 4-SPACE "CITY RACK" MODEL. TRANSVERSE DIMENSIONS ARE TO FRONT OF WALK, CENTER OF RACK BARS, AND FACE OF CURB. LONGITUDINAL DIMENSIONS ARE TO CENTER OF RACK, CENTER OF TREE GRATE, AND PROPERTY LINE

INSTALL 4'X8' TREE GRATE, INCLUDING FRAME. PLANT 3" CALIPER "NEW HORIZON" ELM AT STA 51+28 PER CITY OF MADISON STANDARD SPECIFICATIONS.

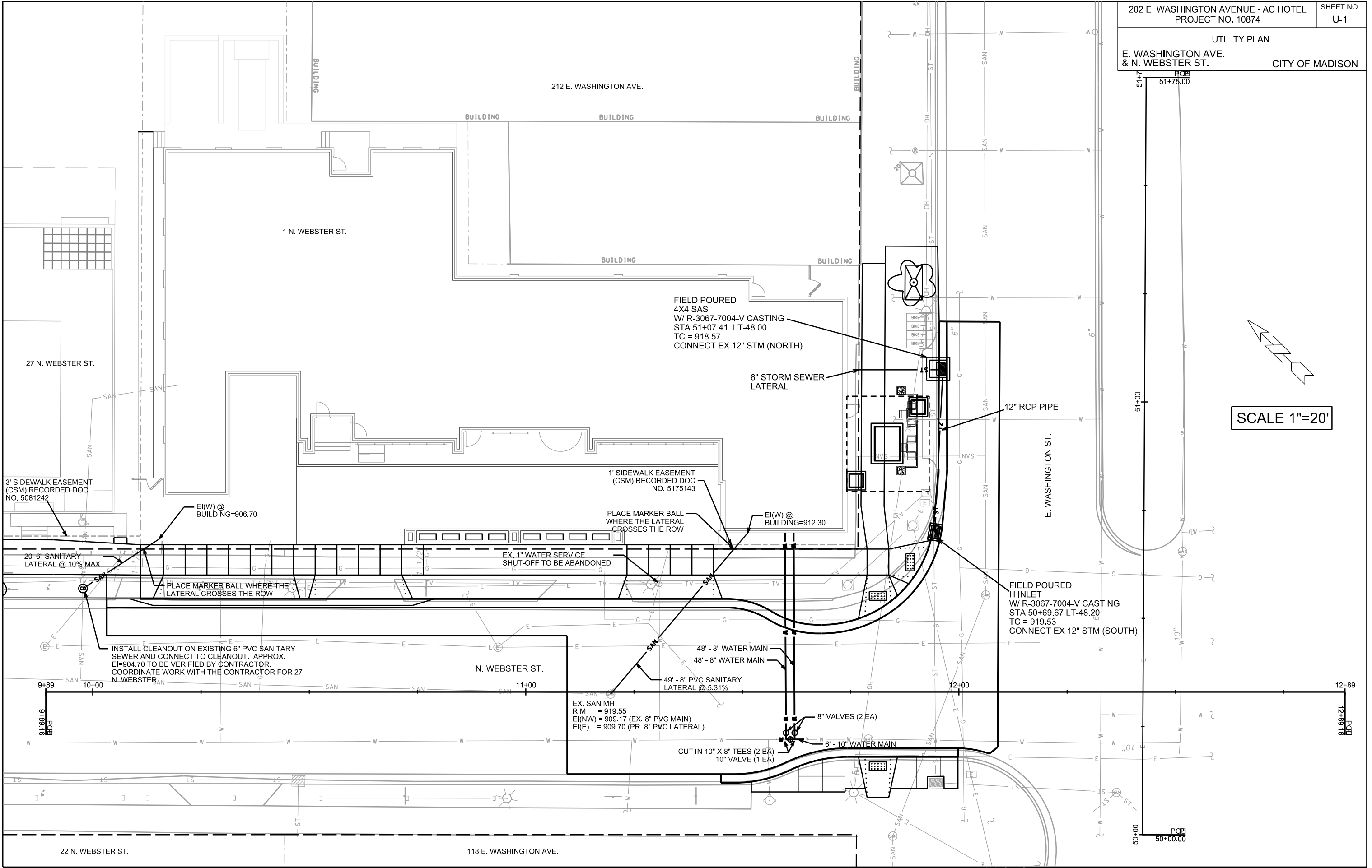
SCALE 1"=20'

PLOT SCALE: \_\_\_\_\_

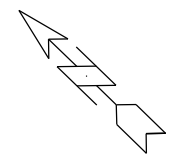
PLOT NAME: \_\_\_\_\_

REV. DATE: \_\_\_\_\_

ORIGINATOR: CITY OF MADISON, STREETS DIVISION



SCALE 1"=20'



PLOT SCALE: \_\_\_\_\_

PLOT NAME: \_\_\_\_\_

REV. DATE: \_\_\_\_\_

ORIGINATOR: CITY OF MADISON, STREETS DIVISION