

MAP LEGEND

- Employment
- Residential
- Commercial
- Recreation/Open Space
- Employment/Residential
- Residential/Commercial
- Commercial/Residential
- Madison Historic Landmark
- Potential Landmark or Contributing Building
- Potential Shared Parking Structure Sites
- Potential Commercial Frontage
- Rail

Bulk Standards
(for each block's street frontage)

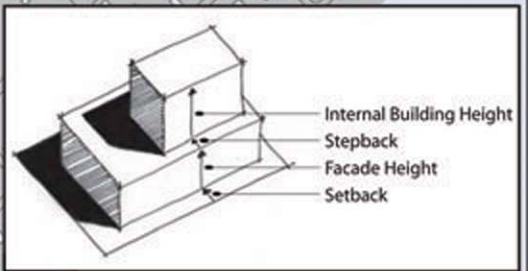
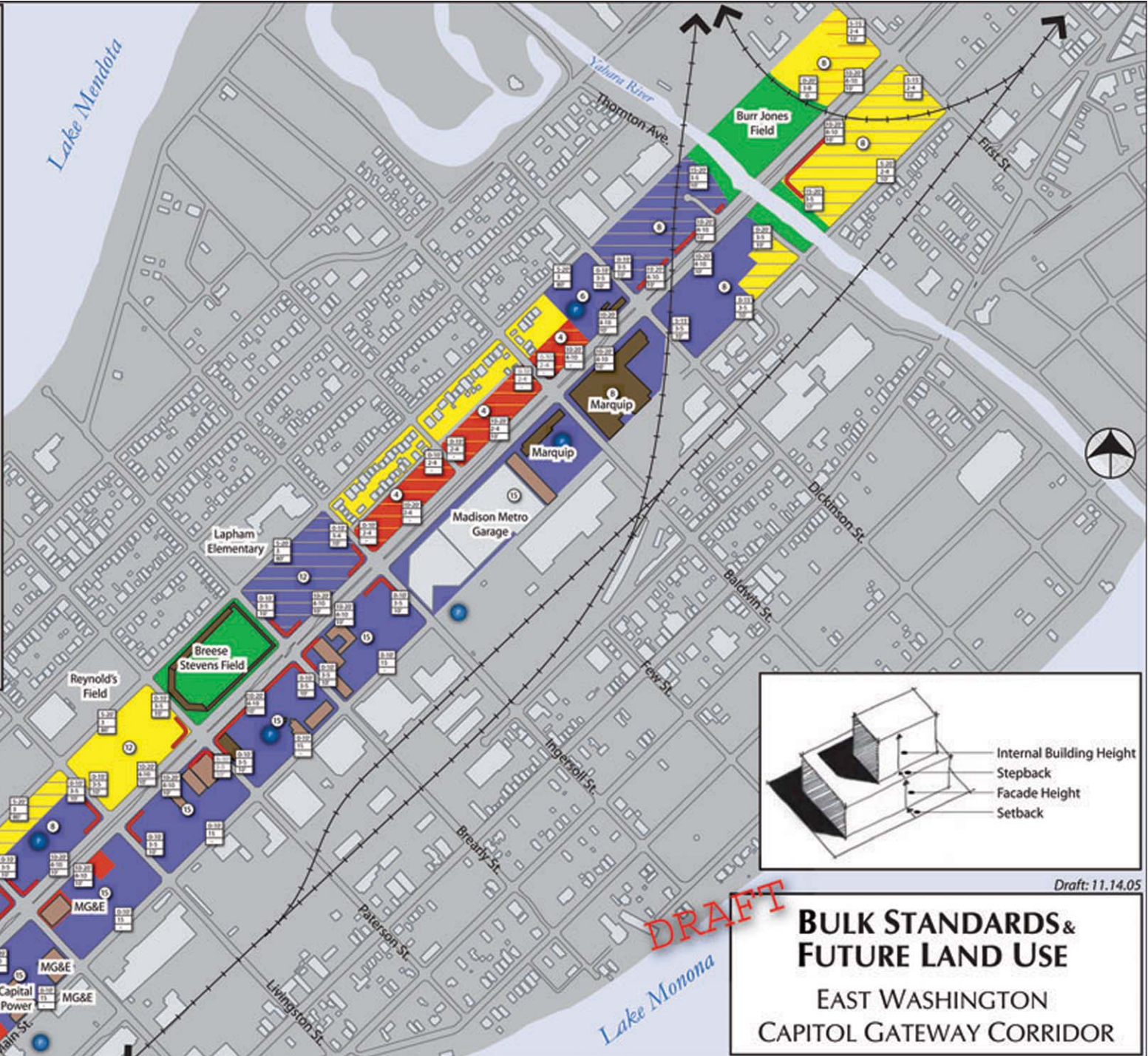
Setback (in feet)
Facade Height (in stories)
Stepback (in feet)

Internal Building Height

NOTES:

- For mixed-use areas, base color is primary land use - stripe color is secondary land use
- Not all bulk standards have been agreed to by the Committee.
- 15 stories is approximate allowable height (180 feet) under FAA regulations.

Vandeville & Associates
© 2005



Draft: 11.14.05

DRAFT

BULK STANDARDS & FUTURE LAND USE
EAST WASHINGTON
CAPITOL GATEWAY CORRIDOR