

Guide to the Madison Map for Bicyclists

Detailed explanation of symbols

The Madison Map for Bicyclists shows two levels of information about Madison's streets to help bicyclists choose their preferred routes between points in the urban area.

First, there is information about types of streets and special facilities for bicyclists. What streets you choose to use will depend upon your skill and confidence level for bicycling in traffic, as well as your origin and destination.

————— **Local or neighborhood streets** primarily provide access to homes. These streets have low volumes of traffic and slow speeds. Local streets do not need any special accommodations for bicyclists. Many bicyclists, however, find local streets inconvenient for longer trips due to frequent stops or circuitous routes.

————— **Collector and arterial streets suitable for most bicyclists, but without any special facilities for bicyclists.**

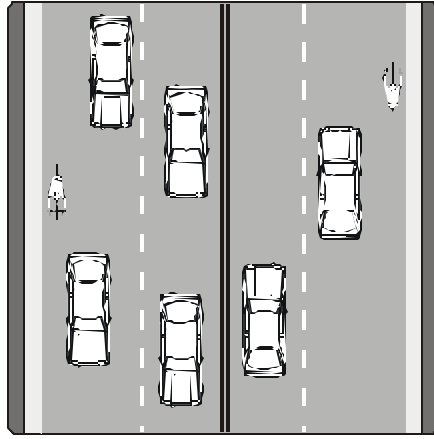
Collector streets connect the neighborhood streets to the main streets. Collector streets have higher volumes of traffic and higher speeds than local streets, but generally are acceptable to most bicyclists without the need for special facilities.

Arterial streets are the main routes through the city. Arterials carry the heaviest volumes and highest speeds of traffic. Arterials are also the major truck routes through the city. Many bicyclists do not feel comfortable riding on arterial streets unless special accommodations for bicyclists have been made on that street.

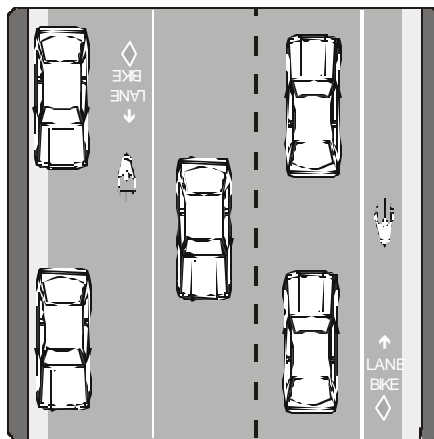
Two bicycle treatments are used on some of Madison's busier streets: wide curb lanes and bike lanes.



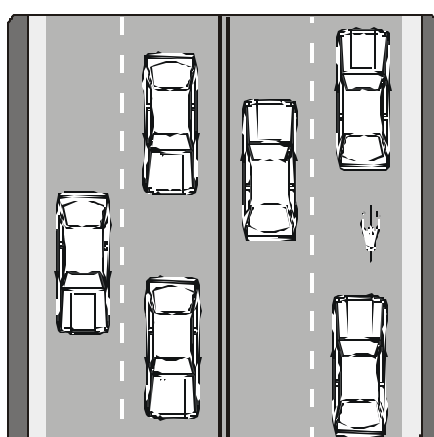
A **wide curb lane** means that the traffic lane next to the curb (the right most lane) is extra wide so a motorist can safely pass a bicyclist without having to change lanes. There is no line painted on the street separating the motorists from the bicyclists.



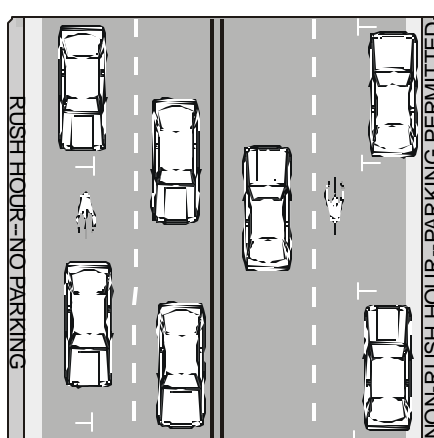
A **bike lane** is a separate lane on the street for bicyclists. This lane is sometimes shared with parked cars or buses.



Many busier streets, however, **lack adequate accommodations for most bicyclists.** Experienced bicyclists may be skilled enough to use these streets, but most bicyclists will prefer to find an alternate route.



Rush hour parking restrictions apply on some major streets in the central area. *During non-rush hour times*, these extra wide parking lanes provide a similar accommodation for bicyclists as a wide curb lane or bicycle lane.



●●●●●●●●●● **Bike paths** are streets for bicyclists, on which motorized vehicles are prohibited. Bike paths, however, are shared with pedestrians, skaters, and other non-motorized users. Please ride responsibly on bike paths, and share the paths with others.

)(■ Overpasses and underpasses allow bicyclists and pedestrians easy access across some of Madison's busiest roads.

▲▲▲▲▲▲▲▲▲▲ **Bicycling is prohibited or not recommended** only on limited access highways such as the Beltline.



Bike routes are the second level of information shown on the map. These routes are intended to indicate major routes through the city (mobility) that most bicyclists will feel comfortable using. They are not intended to link all possible locations (access). Bicyclists are not required to use these routes. New bicyclists, and bicyclists new to Madison, will find these routes useful for getting to know Madison by bicycle.

Bike routes use a combination of local and collector streets, arterial streets with bike lanes or wide curb lanes, overpasses and underpasses.

●●●●●●●●●● **Bike routes on a sidewalk** are used in a few areas due to difficult roadway conditions in order to insure route continuity.

Conditions on roads vary depending on the time of day, the day of the week and the season. Increased traffic congestion during rush hours and construction may call for extra caution. Be prepared to make your own evaluation of traffic and road conditions, and plan routes appropriate to your riding skills.

The user of this map bears full responsibility for his or her safety. The bicyclist assumes the risks encountered and is advised to use good judgement and obey traffic laws on all roads, regardless of their designation on this map.