

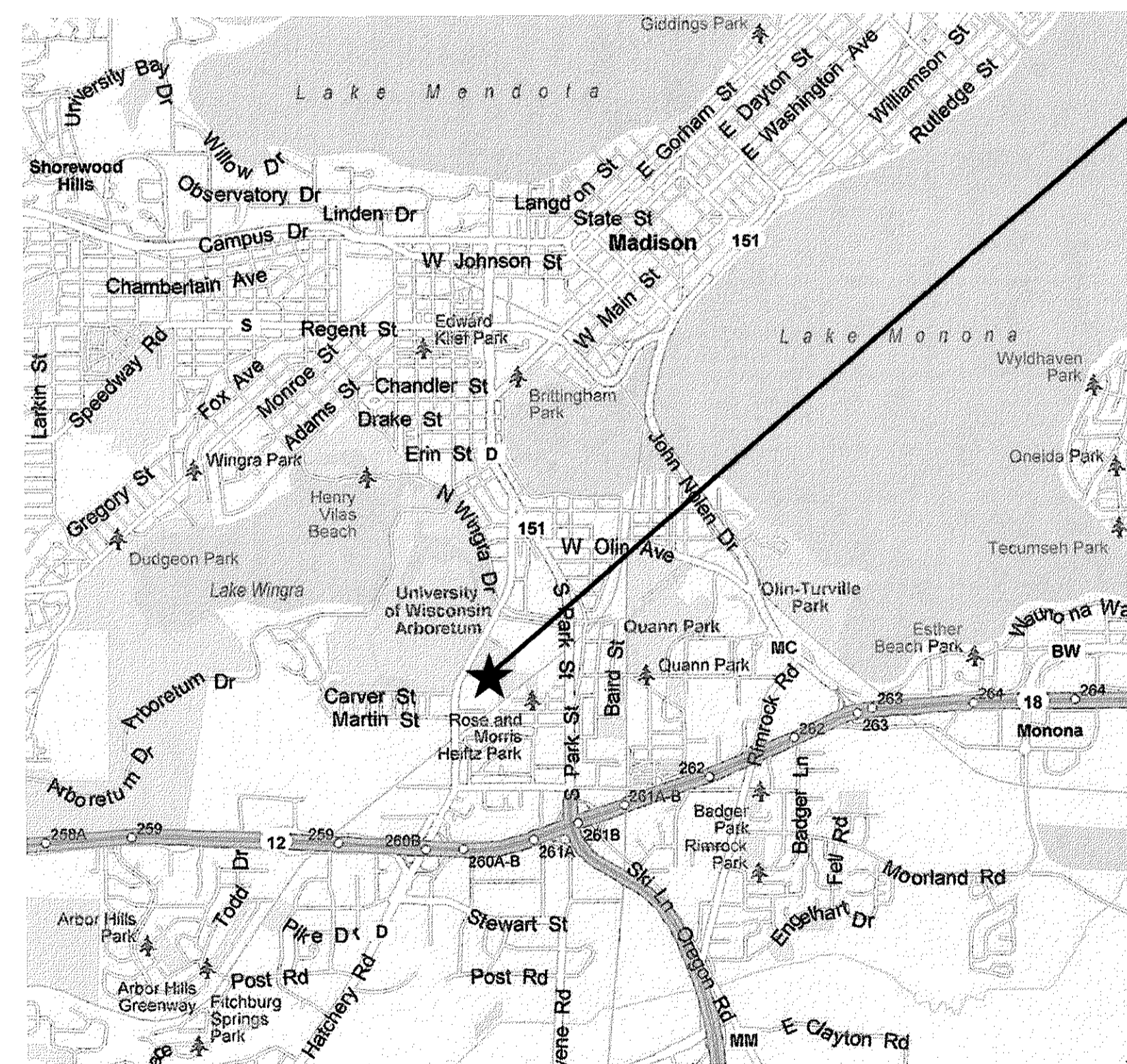
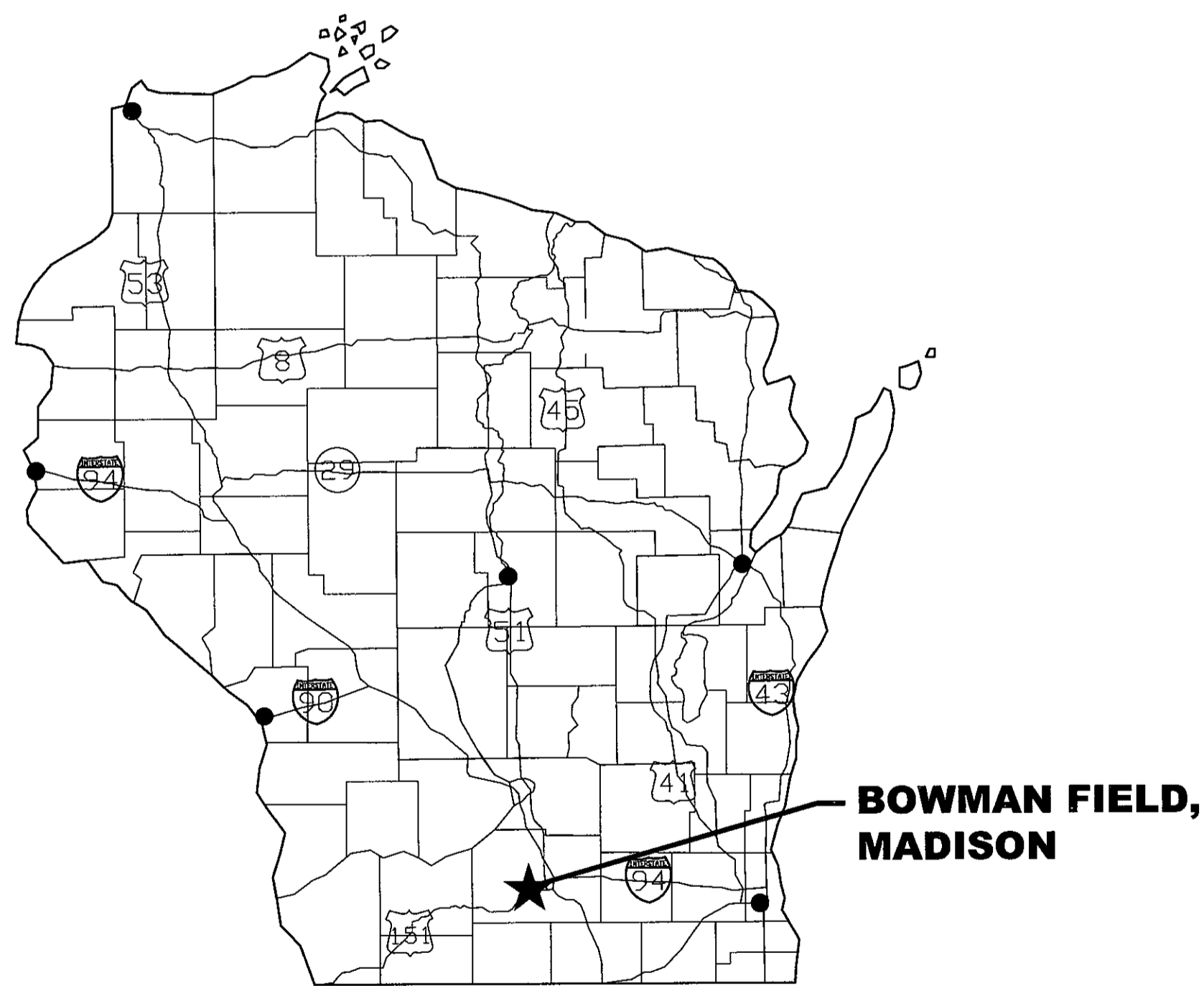
BOWMAN LIGHTING DISTRIBUTION SYSTEM

FOR THE

CITY OF MADISON

MADISON, WISCONSIN

JULY 2013



**BOWMAN FIELD
1801 FISH HATCHERY ROAD
MADISON, WISCONSIN**

LIST OF DRAWINGS		
SHEET NO.	DRAWING NO.	DRAWING TITLE
1	G0.1	TITLE SHEET, LOCATION MAP, AND LIST OF DRAWINGS
2	G0.2	ELECTRICAL SYMBOLS AND ABBREVIATIONS
3	E1.0	ELECTRICAL SITE PLAN
4	E5.1	ELECTRICAL DETAILS
5	E6.1	ELECTRICAL ONE-LINE DIAGRAM AND SCHEDULES

PROJECT LOCATION MAP
NO SCALE



910 West Wingra Drive
Madison, WI 53715
608-251-4843
608-251-8655 fax
www.strand.com

CONTRACT 7135



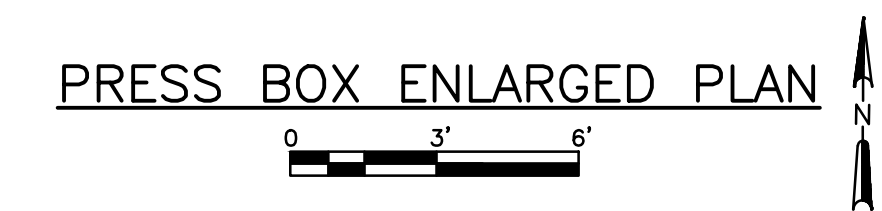
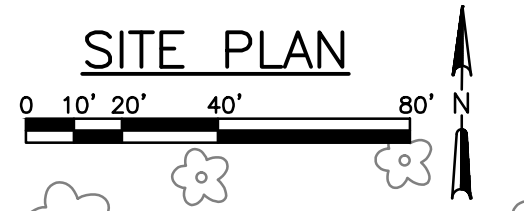
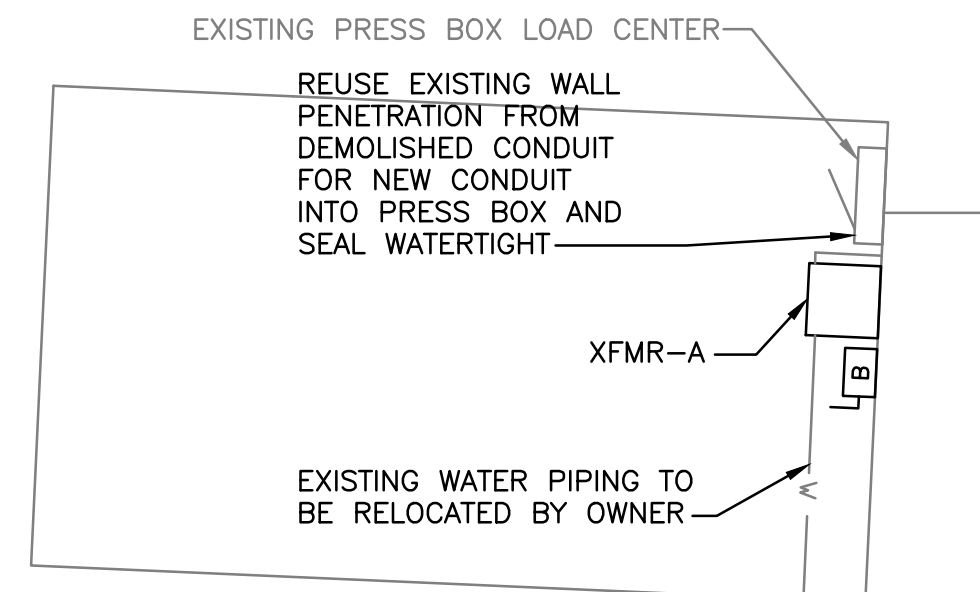
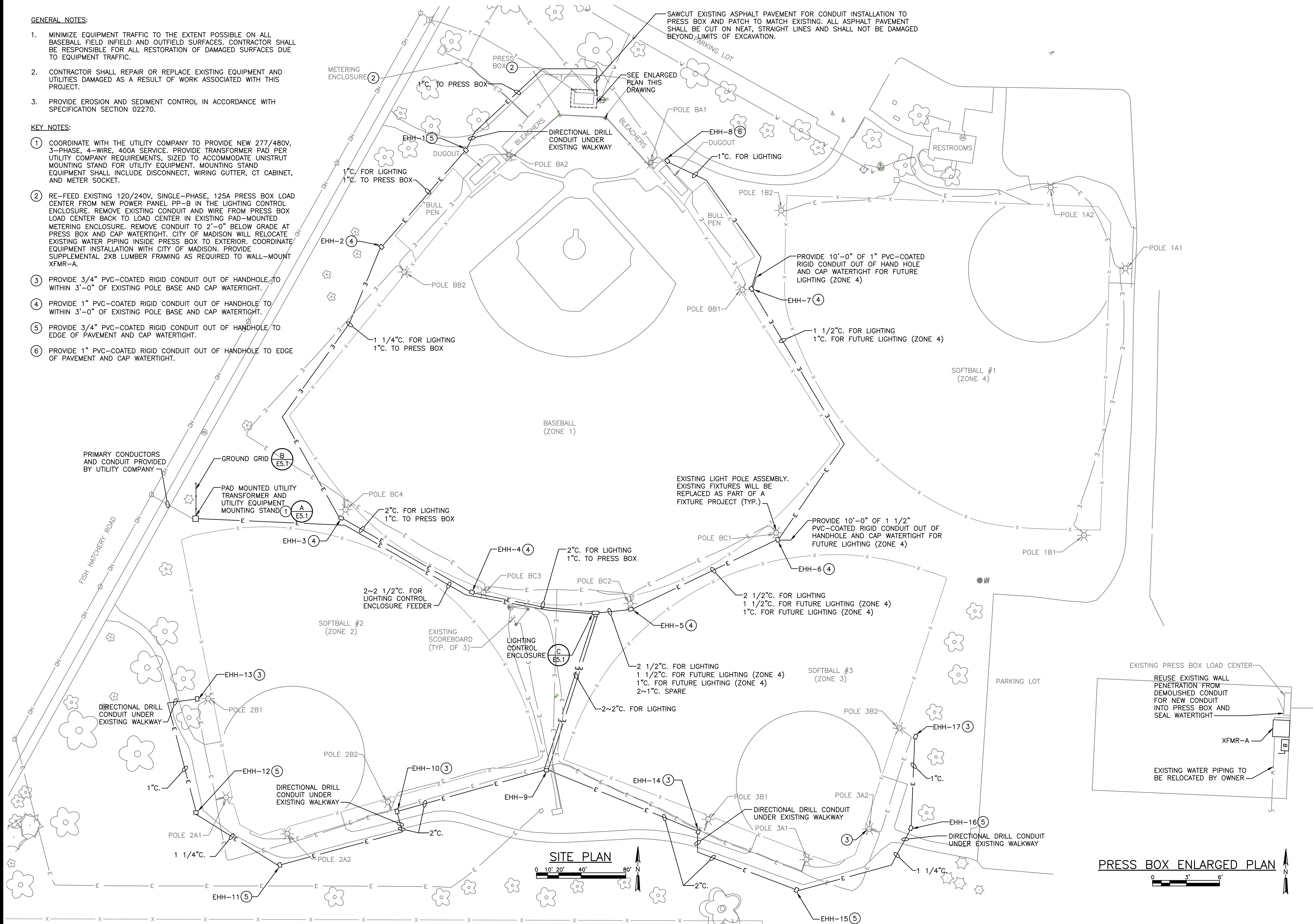
SHEET
1
G0.1

GENERAL NOTES:

1. MINIMIZE EQUIPMENT TRAFFIC TO THE EXTENT POSSIBLE ON ALL BASEBALL FIELD INFIELD AND OUTFIELD SURFACES. CONTRACTOR SHALL BE RESPONSIBLE FOR ALL RESTORATION OF DAMAGED SURFACES DUE TO EQUIPMENT TRAFFIC.
2. CONTRACTOR SHALL REPAIR OR REPLACE EXISTING EQUIPMENT AND UTILITIES DAMAGED AS A RESULT OF WORK ASSOCIATED WITH THIS PROJECT.
3. PROVIDE EROSION AND SEDIMENT CONTROL IN ACCORDANCE WITH SPECIFICATION SECTION 02270.

KEY NOTES:

- ① COORDINATE WITH THE UTILITY COMPANY TO PROVIDE NEW 277/480V, 3-PHASE, 4-WIRE, 400A SERVICE. PROVIDE TRANSFORMER PAD PER UTILITY COMPANY REQUIREMENTS, SIZED TO ACCOMMODATE UNISTRUT MOUNTING STAND FOR UTILITY EQUIPMENT. MOUNTING STAND EQUIPMENT SHALL INCLUDE DISCONNECT, WIRING GUTTER, CT CABINET, AND METER SOCKET.
- ② RE-FEED EXISTING 120/240V, SINGLE-PHASE, 125A PRESS BOX LOAD CENTER FROM NEW POWER PANEL PP-B IN THE LIGHTING CONTROL ENCLOSURE. REMOVE EXISTING CONDUIT AND WIRE FROM PRESS BOX LOAD CENTER BACK TO LOAD CENTER IN EXISTING PAD-MOUNTED METERING ENCLOSURE. REMOVE CONDUIT TO 2'-0" BELOW GRADE AT PRESS BOX AND CAP WATER TIGHT. CITY OF MADISON WILL RELOCATE EXISTING WATER PIPING INSIDE PRESS BOX TO EXTERIOR. COORDINATE EQUIPMENT INSTALLATION WITH CITY OF MADISON. PROVIDE SUPPLEMENTAL 2X8 LUMBER FRAMING AS REQUIRED TO WALL-MOUNT XFMR-A.
- ③ PROVIDE 3/4" PVC-COATED RIGID CONDUIT OUT OF HANDHOLE TO WITHIN 3'-0" OF EXISTING POLE BASE AND CAP WATER TIGHT.
- ④ PROVIDE 1" PVC-COATED RIGID CONDUIT OUT OF HANDHOLE TO WITHIN 3'-0" OF EXISTING POLE BASE AND CAP WATER TIGHT.
- ⑤ PROVIDE 3/4" PVC-COATED RIGID CONDUIT OUT OF HANDHOLE TO EDGE OF PAVEMENT AND CAP WATER TIGHT.
- ⑥ PROVIDE 1" PVC-COATED RIGID CONDUIT OUT OF HANDHOLE TO EDGE OF PAVEMENT AND CAP WATER TIGHT.



DATE:							

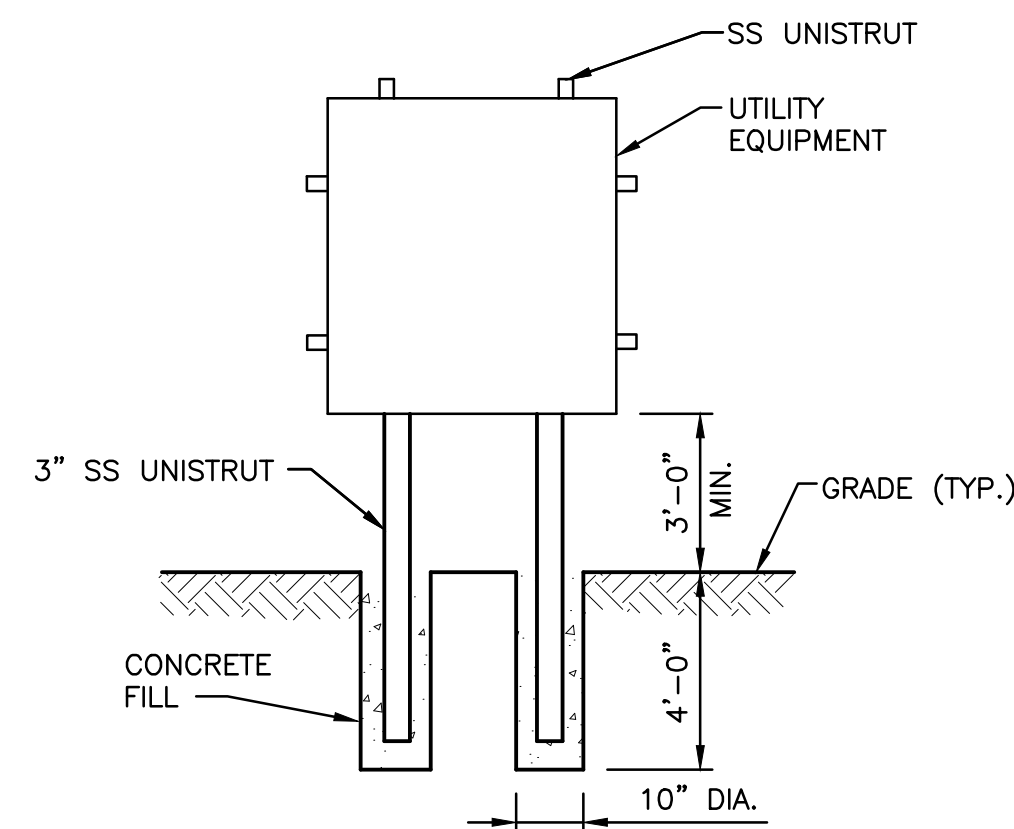
NO.	REVISIONS

ELECTRICAL SITE PLAN
BOWMAN LIGHTING DISTRIBUTION SYSTEM
CITY OF MADISON
MADISON, WISCONSIN

JOB NO.
1020.076
PROJECT MGR.

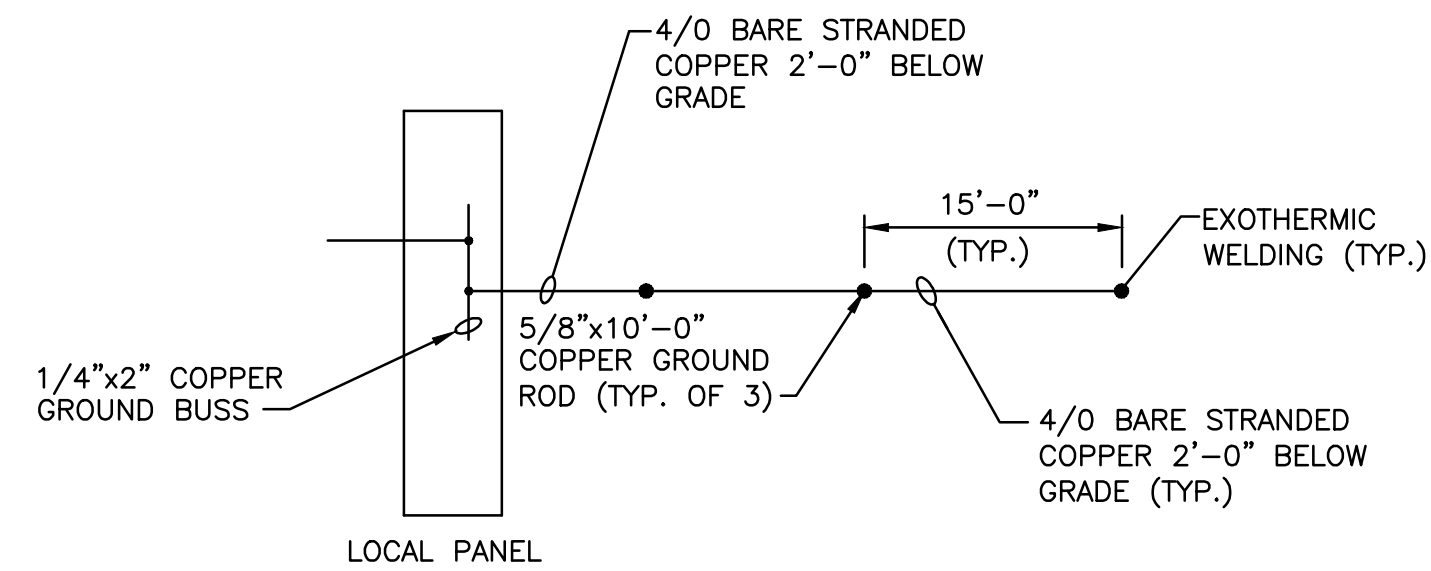


SHEET
3
E1.0

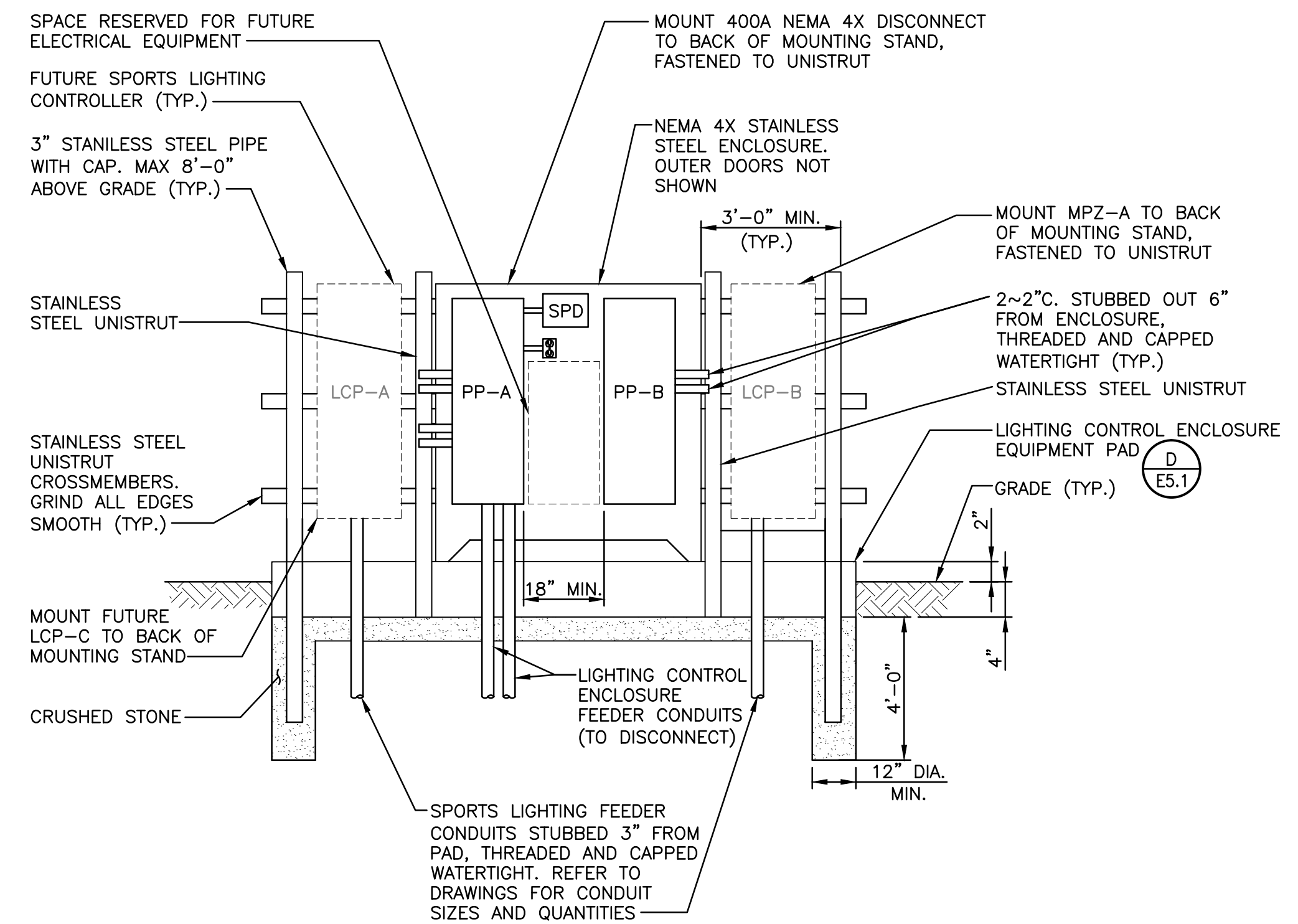


NOTE: MOUNT UTILITY EQUIPMENT PER DRAWING COM-7 IN MG&E ELECTRICAL CONTRACTOR'S HANDBOOK.

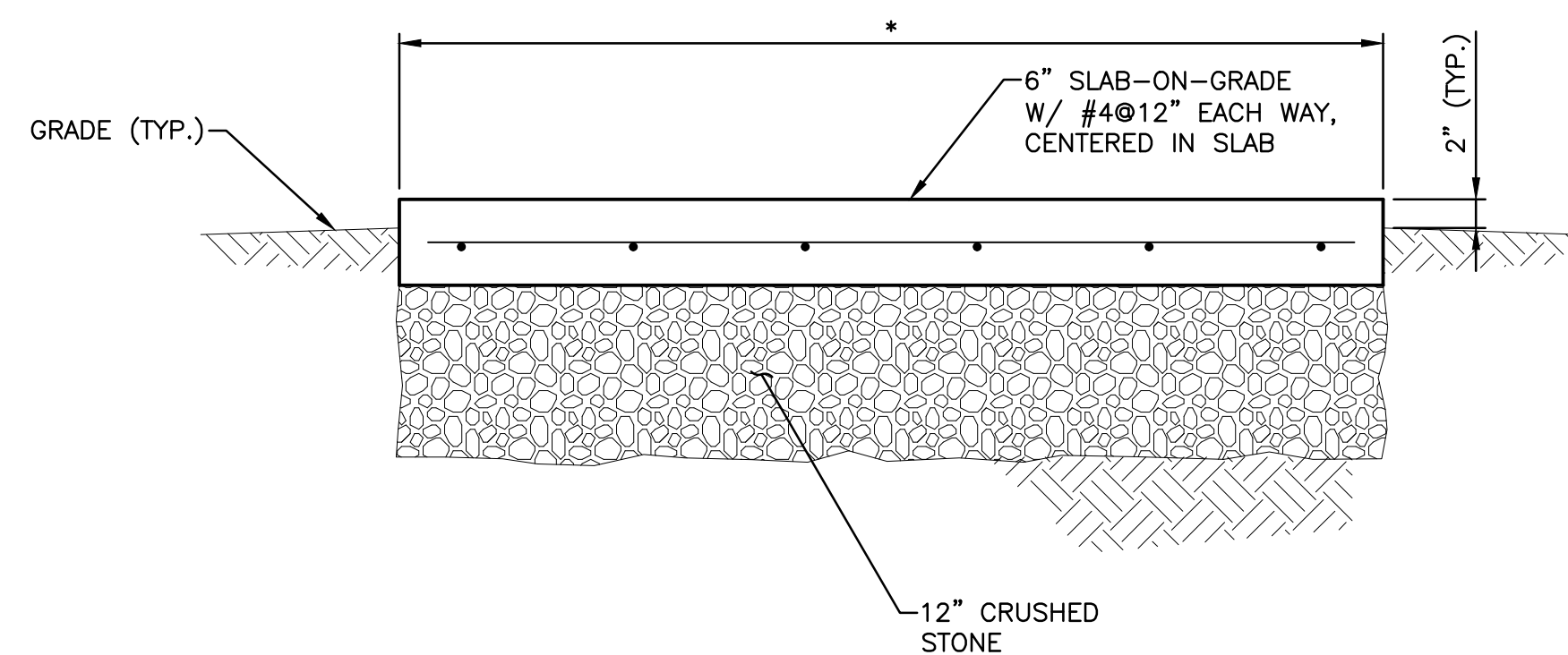
A UTILITY EQUIPMENT MOUNTING STAND
E5.1 NO SCALE



B GROUND GRID
E5.1 NO SCALE



C LIGHTING CONTROL ENCLOSURE ELEVATION
E5.1 NO SCALE



* VERIFY WITH EQUIPMENT MANUFACTURER. EXTEND PAD 12" PAST EQUIPMENT BASE ON ALL SIDES.

D LIGHTING CONTROL ENCLOSURE EQUIPMENT PAD
E5.1 NO SCALE

DATE:					

NO.	REVISIONS

ELECTRICAL DETAILS
BOWMAN LIGHTING DISTRIBUTION SYSTEM
 CITY OF MADISON
 MADISON, WISCONSIN

JOB NO.
1020.076
PROJECT MGR.



SHEET
4
E5.1

