

Madison, Wisconsin

# CITY OF MADISON

## MADISON WATER UTILITY

### DEPARTMENT OF PUBLIC WORKS

## PLAN OF PROPOSED IMPROVEMENT

### STRUCTURAL REHABILITATION OF WATER MAINS - 2015

CITY PROJECT NO. 53W1797  
CONTRACT NO. 7487

INDEX OF SHEETS

SHEET NO.	1	TITLE SHEET
SHEET NO.	W1	PROJECT OVERVIEW
SHEET NO.	W2-W4	WATER MAIN REHABILITATION PLAN

PUBLIC IMPROVEMENT PROJECT  
APPROVED

FEBRUARY 24, 2015

BY THE COMMON COUNCIL  
OF MADISON, WISCONSIN

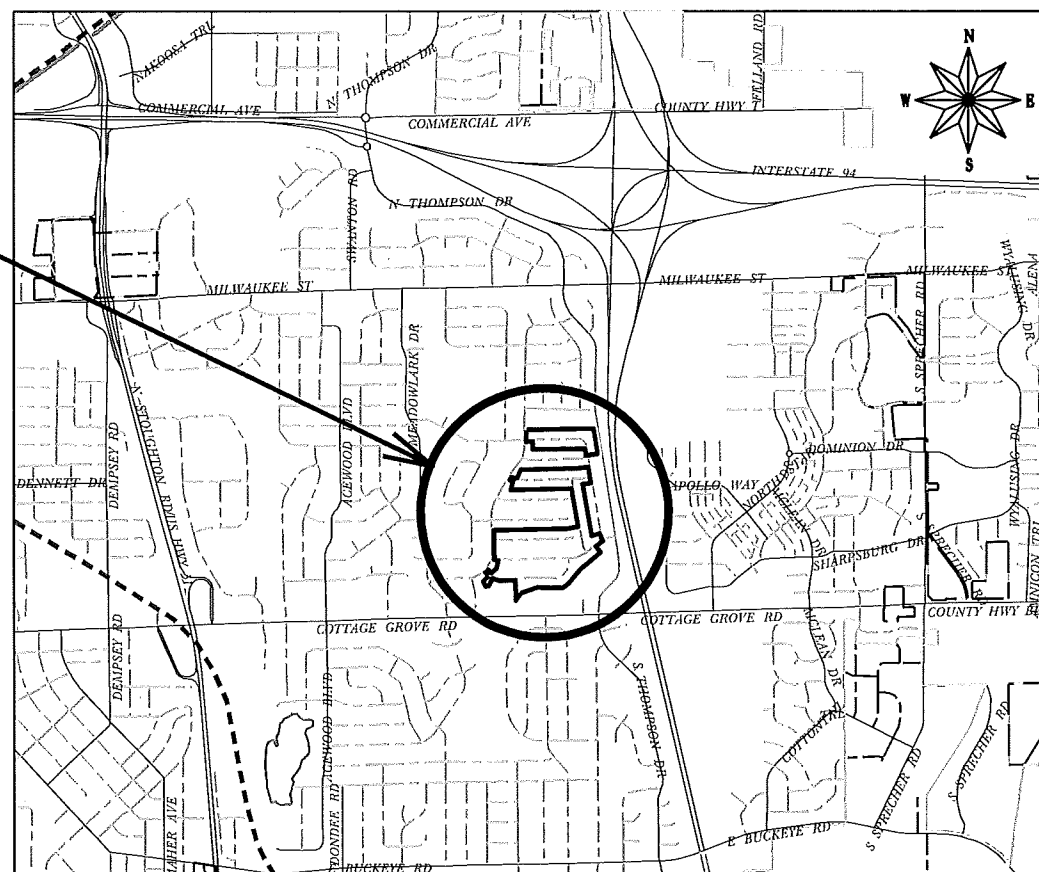
PUBLIC IMPROVEMENT DESIGN  
APPROVED BY:

*[Signature]* 2/20/15  
Principal Engineer Date  
Madison Water Utility

WATER  
DESIGNED BY:

WISCONSIN PROFESSIONAL ENGINEER  
ADAM R. WIEDERHOEFT  
E-41559  
MADISON WI  
*[Signature]*  
2-20-15

CONSTRUCTION  
PROJECT LOCATION



CONVENTIONAL SIGNS	
FIELD VERIFY ALL UTILITY LOCATIONS	
GAS	— G —
STORM SEWER	— ST —
SANITARY SEWER	— SAN —
WATER	— W —
BURIED ELECTRIC	— E —
OVERHEAD ELECTRIC	— OH —
POWER POLE	□
ADA COMPLIANT RAMP W/ DETECTABLE WARNING FIELD	▣
COMBUSTIBLE FLUIDS	☀

PLOT SCALE:

PLOT NAME:

REV. DATE:

ORIGINATOR: CITY OF MADISON, STREETS DIVISION

SEE SHEET W-4

PROJECT AREA /  
IMPACTED PROPERTIES

2015 RESURFACING  
PROJECT AREA - SEE  
SPECIAL PROVISIONS  
FOR COORDINATION  
REQUIREMENTS/DATES

SEE SHEET W-2

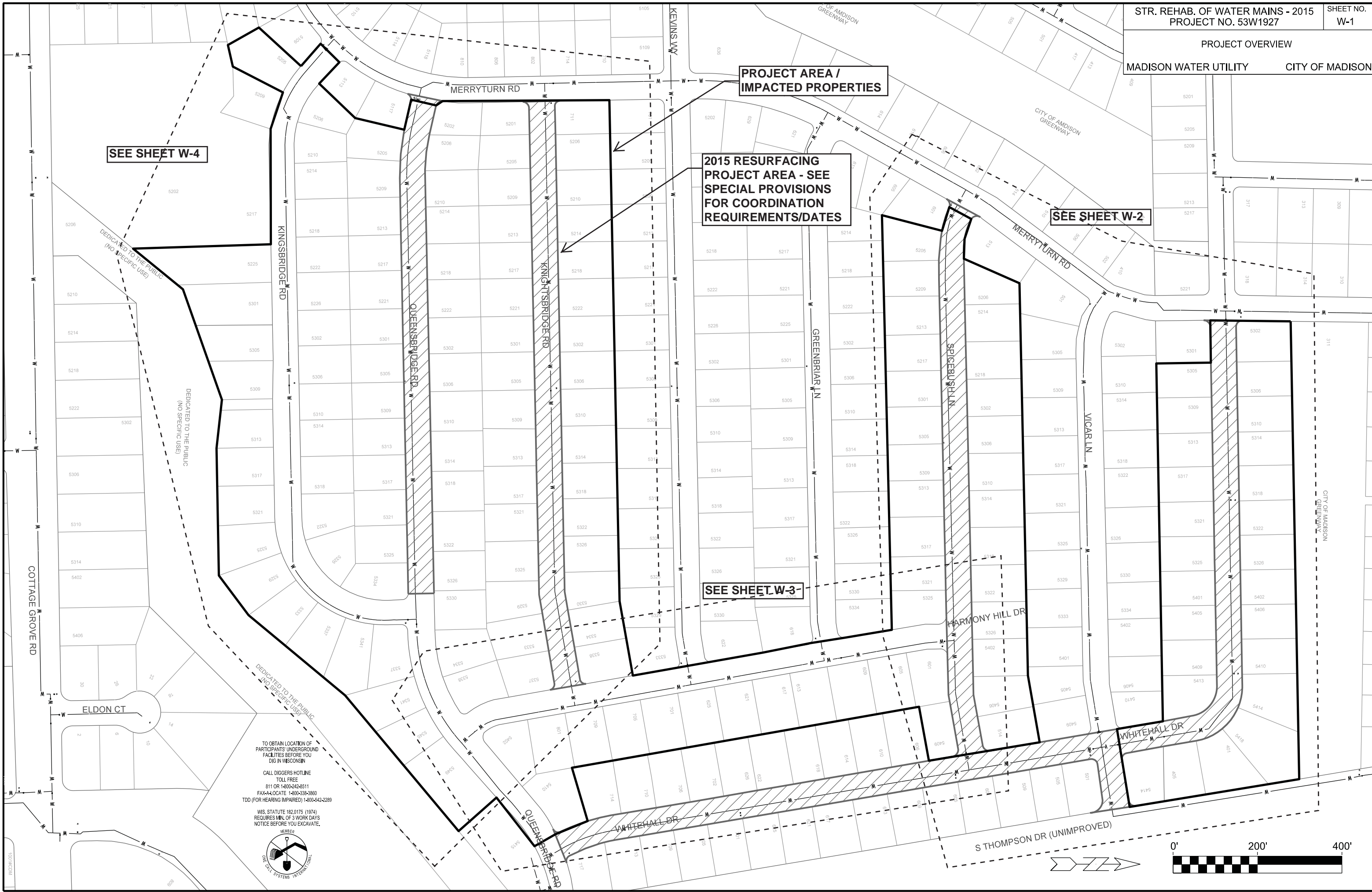
SEE SHEET W-3

PLOT SCALE: \_\_\_\_\_

PLOT NAME: \_\_\_\_\_

REV. DATE: \_\_\_\_\_

ORIGINATOR: CITY OF MADISON, STREETS DIVISION



DEDICATED TO THE PUBLIC  
(NO SPECIFIC USE)

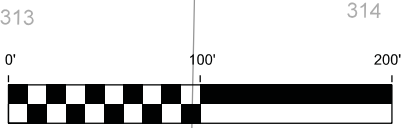
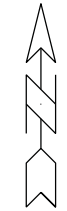
DEDICATED TO THE PUBLIC  
(NO SPECIFIC USE)

TO OBTAIN LOCATION OF  
PARTICIPANTS' UNDERGROUND  
FACILITIES BEFORE YOU  
DIG IN WISCONSIN  
CALL DIGGERS HOTLINE  
TOLL FREE  
811 OR 1-800-242-8511  
FAX-A-LOCATE 1-800-338-3860  
TDD (FOR HEARING IMPAIRED) 1-800-542-2289

WIS. STATUTE 182.0175 (1974)  
REQUIRES MIN. OF 3 WORK DAYS  
NOTICE BEFORE YOU EXCAVATE.



TO OBTAIN LOCATION OF PARTICIPANTS' UNDERGROUND FACILITIES BEFORE YOU DIG IN WISCONSIN  
CALL DIGGERS HOTLINE TOLL FREE  
811 OR 1-800-242-8511  
FAX-4 LOCATE 1-800-338-3860  
TDD (FOR HEARING IMPAIRED) 1-800-542-2289  
WS. STATUTE 182.0175 (1974) REQUIRES MIN. OF 3 WORK DAYS NOTICE BEFORE YOU EXCAVATE.



MADISON WATER UTILITY WILL PROVIDE ACCESS PIT EXCAVATION AND RECONNECTIONS, VALVE REPLACEMENTS AND HYDRANT REPLACEMENTS. COORDINATE WORKPLAN WITH MWU (SEE SPECS).

PROVIDE ENGINEER PROPOSED BYPASS SYSTEM PLAN, PROPOSED ACCESS PIT LOCATIONS AND CUSTOMER NOTICE LETTER PRIOR TO BEGINING WORK (SEE SPECS).

BEGIN 8-IN STRUCTURAL WATER MAIN REHABILITATION

BOUNDARY OF AFFECTED PROPERTIES. BYPASS SERVICE REQUIRED (TYP).

END 8-IN STRUCTURAL WATER MAIN REHABILITATION

BOLD R-O-W INDICATES LIMITS OF 2015 RESURFACING PROJECTS. SEE SPECIAL PROVISIONS FOR COORDINATION REQUIREMENTS

MADISON WATER UTILITY WILL PROVIDE ACCESS PIT EXCAVATION AND RECONNECTIONS, VALVE REPLACEMENTS AND HYDRANT REPLACEMENTS. COORDINATE WORKPLAN WITH MWU (SEE SPECS).

END 6-IN STRUCTURAL WATER MAIN REHABILITATION

BEGIN 6-IN STRUCTURAL WATER MAIN REHABILITATION

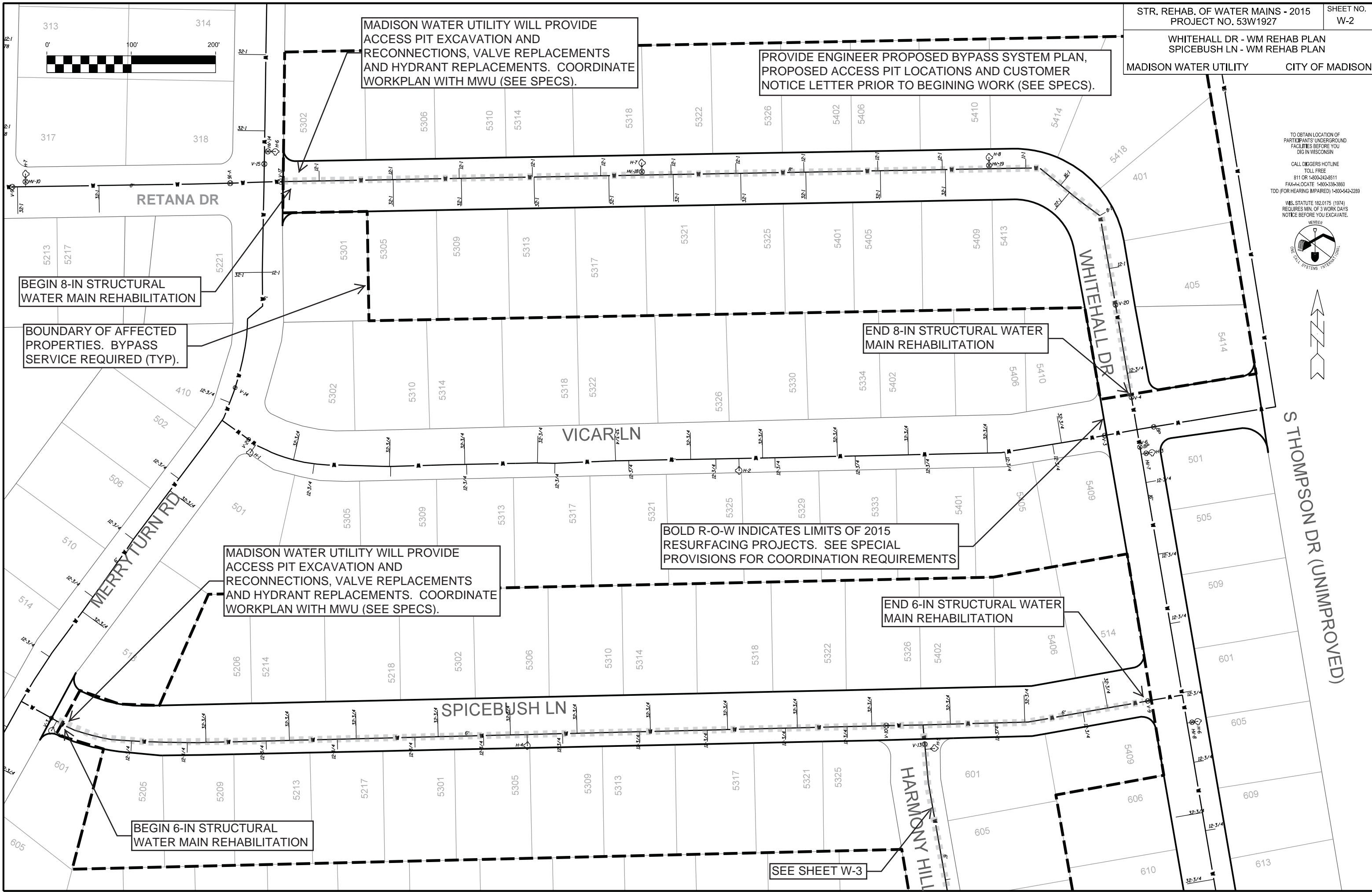
SEE SHEET W-3

PLOT SCALE: \_\_\_\_\_

PLOT NAME: \_\_\_\_\_

REV. DATE: \_\_\_\_\_

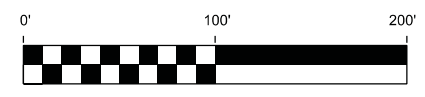
ORIGINATOR: CITY OF MADISON, WATER UTILITY



MPSON DR (UNIMPROVED)

HARMONY HILL DR - WM REHAB PLAN

MADISON WATER UTILITY CITY OF MADISON



END 6-IN STRUCTURAL WATER MAIN REHABILITATION - DO NOT INTERRUPT WATER SERVICE FROM WELL 25 VIA WHITEHALL DR

BOLD R-O-W INDICATES LIMITS OF 2015 RESURFACING PROJECTS. SEE SPECIAL PROVISIONS FOR COORDINATION REQUIREMENTS

BOUNDARY OF AFFECTED PROPERTIES. BYPASS SERVICE REQUIRED (TYP).

BEGIN 6-IN STRUCTURAL WATER MAIN REHABILITATION

BEGIN 6-IN STRUCTURAL WATER MAIN REHABILITATION

MADISON WATER UTILITY WILL PROVIDE ACCESS PIT EXCAVATION AND RECONNECTIONS, VALVE REPLACEMENTS AND HYDRANT REPLACEMENTS. COORDINATE WORKPLAN WITH MWU (SEE SPECS).

PROVIDE ENGINEER PROPOSED BYPASS SYSTEM PLAN, PROPOSED ACCESS PIT LOCATIONS AND CUSTOMER NOTICE LETTER PRIOR TO BEGINING WORK (SEE SPECS).

END 6-IN STRUCTURAL WATER MAIN REHABILITATION

SEE SHEET W-4

SEE SHEET W-2

TO OBTAIN LOCATION OF PARTICIPANTS UNDERGROUND FACILITIES BEFORE YOU DIG IN WISCONSIN  
CALL DIGGERS HOTLINE TOLL FREE  
811 OR 1-800-242-8511  
FAX-4 LOCATE 1-800-338-3860  
TDD (FOR HEARING IMPAIRED) 1-800-542-2289

WIS. STATUTE 182.0175 (1974) REQUIRES MIN. OF 3 WORK DAYS NOTICE BEFORE YOU EXCAVATE.



PLOT SCALE: \_\_\_\_\_

PLOT NAME: \_\_\_\_\_

REV. DATE: \_\_\_\_\_

ORIGINATOR: CITY OF MADISON, WATER UTILITY

MADISON WATER UTILITY WILL PROVIDE ACCESS PIT EXCAVATION AND RECONNECTIONS, VALVE REPLACEMENTS AND HYDRANT REPLACEMENTS. COORDINATE WORKPLAN WITH MWU (SEE SPECS). (TYP.)

BOUNDARY OF AFFECTED PROPERTIES. BYPASS SERVICE REQUIRED (TYP.)

END 6-IN STRUCTURAL WATER MAIN REHABILITATION

MERRYTURN RD

KNIGHTSBRIDGE RD

BEGIN 6-IN STRUCTURAL WATER MAIN REHABILITATION

PROVIDE ENGINEER PROPOSED BYPASS SYSTEM PLAN, PROPOSED ACCESS PIT LOCATIONS AND CUSTOMER NOTICE LETTER PRIOR TO BEGINING WORK (SEE SPECS).

BOLD R-O-W INDICATES LIMITS OF 2015 RESURFACING PROJECTS. SEE SPECIAL PROVISIONS FOR COORDINATION REQUIREMENTS

SEE SHEET W-3

BEGIN 6-IN STRUCTURAL WATER MAIN REHABILITATION

QUEENSBRIDGE RD

BEGIN 6-IN STRUCTURAL WATER MAIN REHABILITATION

END 6-IN STRUCTURAL WATER MAIN REHABILITATION

END 6-IN STRUCTURAL WATER MAIN REHABILITATION (AT INTERSECTION)

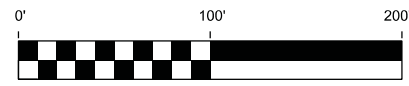
KINGSBRIDGE RD

DEDICATED TO THE PUBLIC (NO SPECIFIC USE)

TO OBTAIN LOCATION OF PARTICIPANTS UNDERGROUND FACILITIES BEFORE YOU DIG IN WISCONSIN

CALL DIGGERS HOTLINE TOLL FREE 811 OR 1-800-242-8511 FAX-ALOCATE 1-800-338-3860 TDD (FOR HEARING IMPAIRED) 1-800-642-2289

WIS. STATUTE 182.0175 (1974) REQUIRES MIN. OF 3 WORK DAYS NOTICE BEFORE YOU EXCAVATE.



PLOT SCALE: \_\_\_\_\_

PLOT NAME: \_\_\_\_\_

REV. DATE: \_\_\_\_\_

ORIGINATOR: CITY OF MADISON, WATER UTILITY