



Madison, Wisconsin

CITY OF MADISON

CITY ENGINEERING DIVISION

DEPARTMENT OF PUBLIC WORKS

PLAN OF PROPOSED IMPROVEMENT

E. GORHAM STREET RESURFACING: UTILITIES

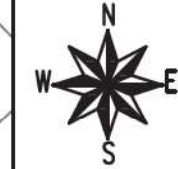
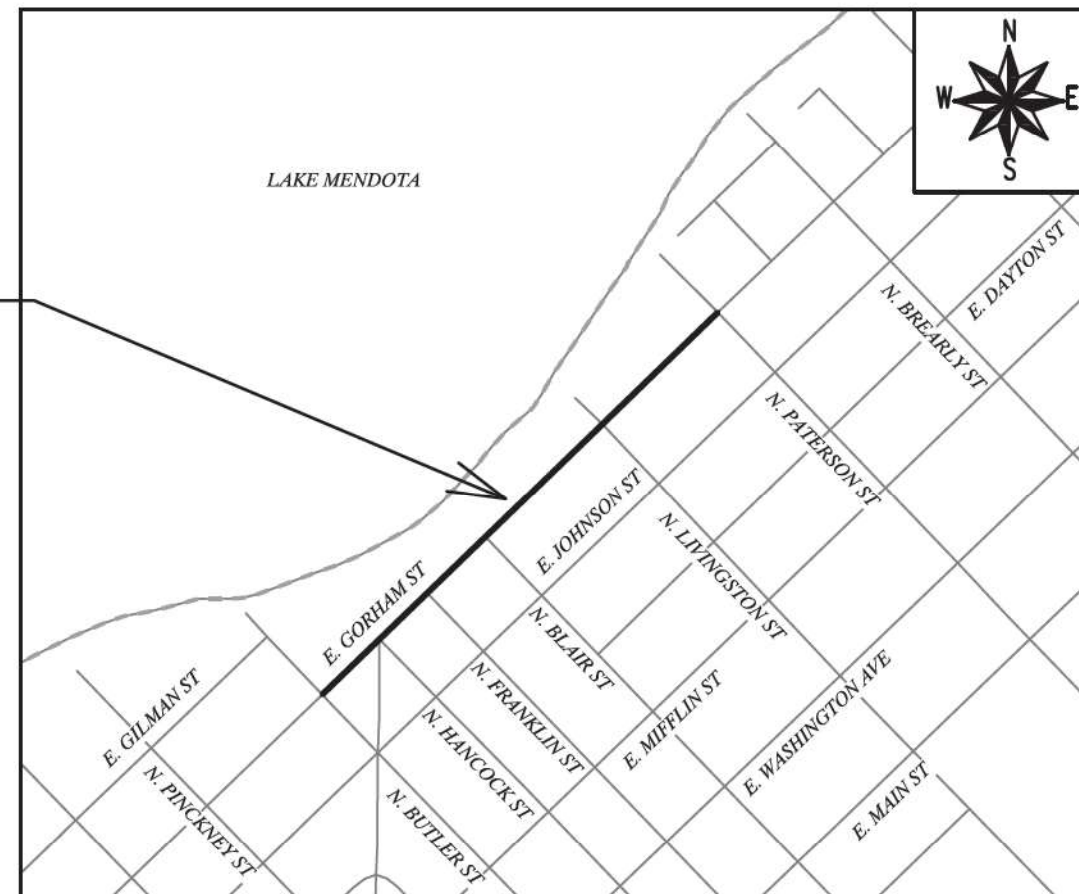
INDEX OF SHEETS

| | |
|-----------------|-------------------------|
| SHEET NO. U1-U5 | UTILITY PLAN & PROFILES |
| SHEET NO. U6 | SANITARY SEWER SCHEDULE |

| CONVENTIONAL SIGNS | |
|---|---------|
| FIELD VERIFY ALL UTILITY LOCATIONS | |
| GAS | — G — |
| STORM SEWER | — ST — |
| SANITARY SEWER | — SAN — |
| WATER | — W — |
| BURIED ELECTRIC | — E — |
| OVERHEAD ELECTRIC | — OH — |
| POWER POLE | |
| ADA COMPLIANT RAMP W/ DETECTABLE WARNING FIELD | |
| COMBUSTIBLE FLUIDS | |

PROJECT LOCATION

CITY PROJECT NO. 12989
CONTRACT NO. 8864



NOTES:

ALL GUTTERS SHALL DRAIN WITH A MINIMUM GRADE OF 0.50% TOWARD STORM SEWER INLETS.

SIDEWALK RAMPS SHALL HAVE A MAXIMUM SLOPE OF 1" PER 12". SIDEWALK AND CURB RAMPS SHALL BE CONSTRUCTED WITH A SIDE SLOPE OF 2.00%. SIDEWALK SHALL HAVE A MINIMUM LONGITUDINAL SLOPE OF 0.50% AND A MAXIMUM LONGITUDINAL SLOPE OF 5.00% EXCEPT WHERE STREET GRADES EXCEED 5.00%.

PUBLIC IMPROVEMENT PROJECT APPROVED

JUNE 2, 2020

BY THE COMMON COUNCIL OF MADISON, WISCONSIN

PUBLIC IMPROVEMENT DESIGN APPROVED BY:

Christy Bachmann for May 15, 2020
Christy Bachmann for (May 15, 2020)

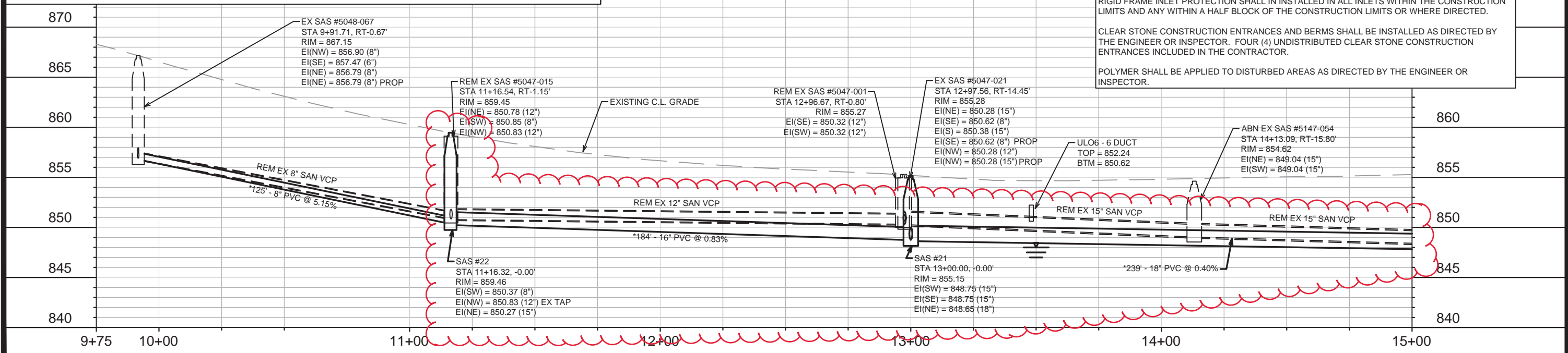
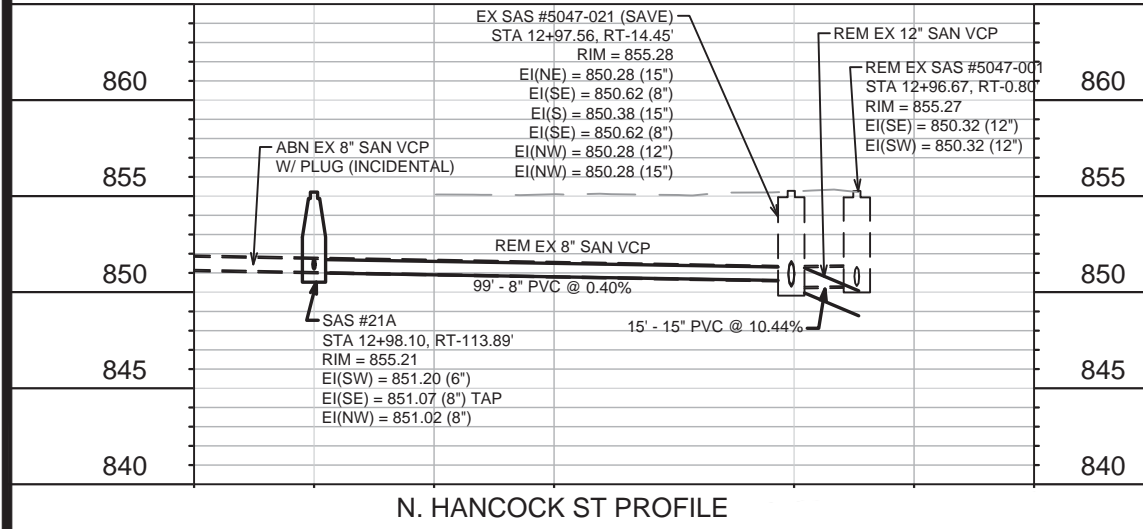
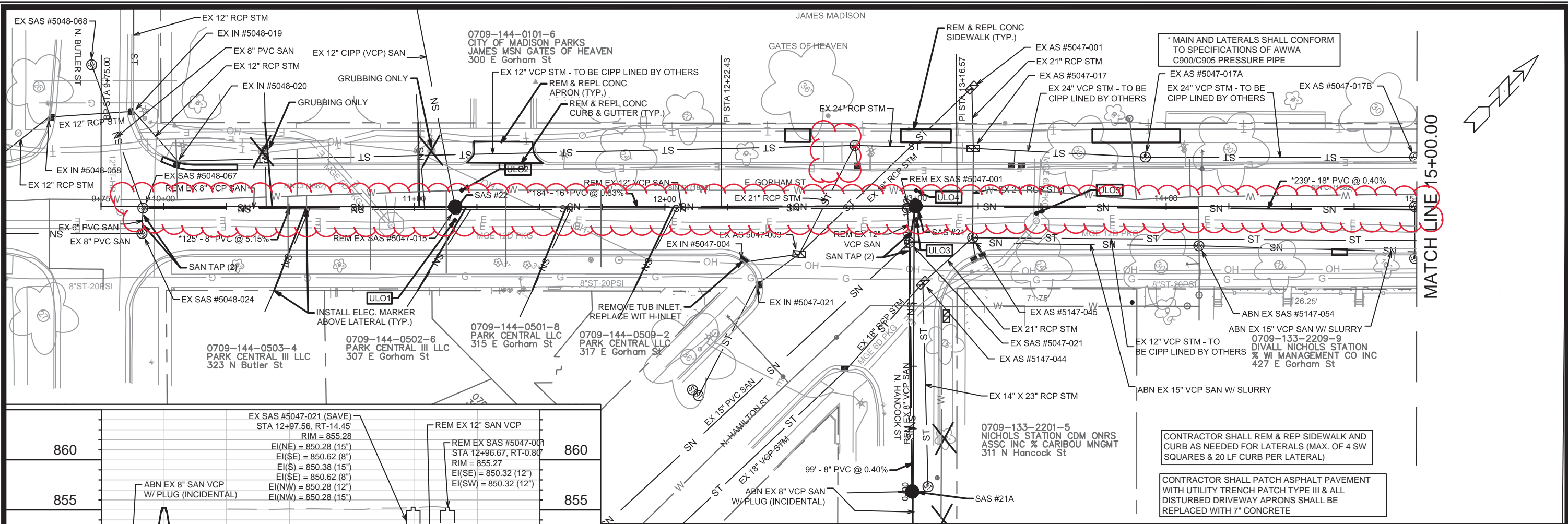
City Engineer Date

SANITARY SEWER DESIGNED BY:

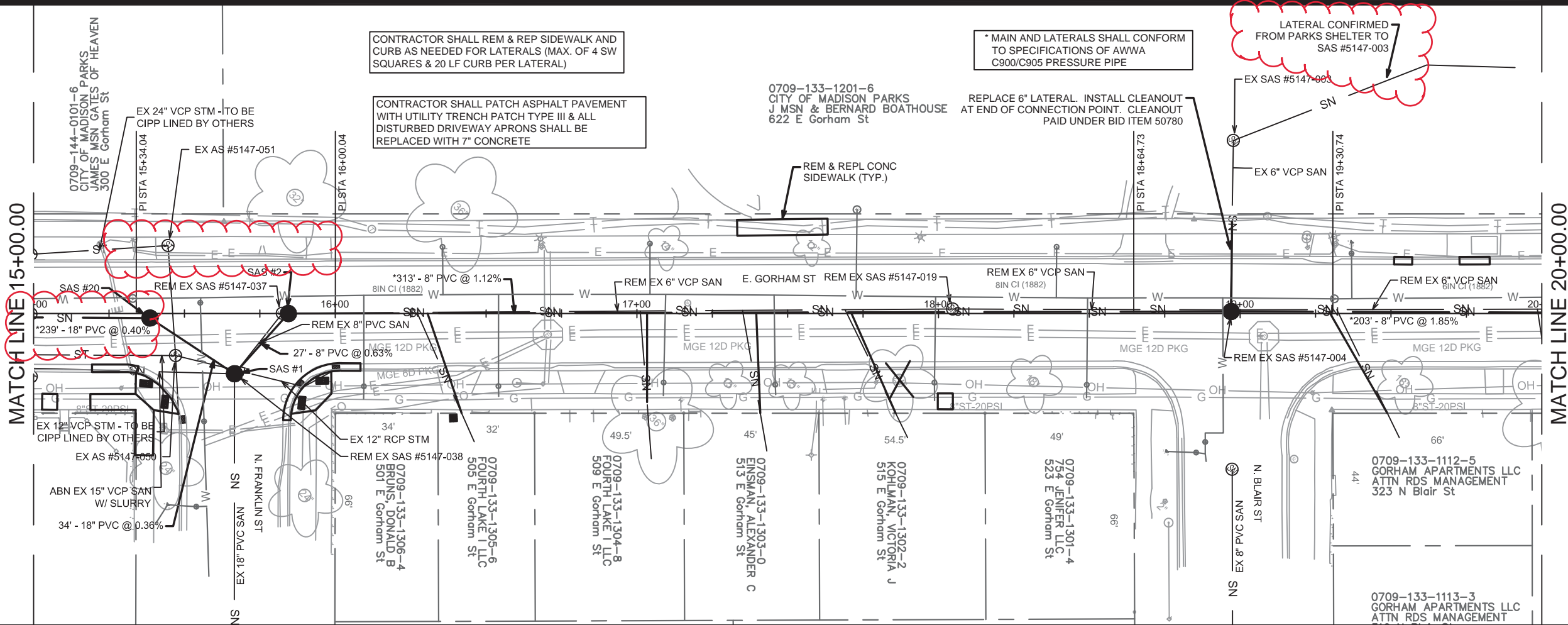


May 15, 2020

PLOT SCALE: 1 IN:1 FT_XREF
PLOT NAME: —
REV. DATE: 5/13/2020 8:02 PM
ORIGINATOR: CITY_OF_MADISON



| | | | |
|---|-------------|---------------|-----|
| 12989 | MADISON, WI | 8864 | U-1 |
| UTILITY PLAN & PROFILE | | CONTRACT NO.: | |
| E. GORHAM STREET RESURFACING: UTILITIES | | 12989 | |
| M:\DESIGN\Projects\12756\CAD\Sanitary\12756SAN-Pipe Network.dwg | | U-1 | |
| SAN SWR UPDATES: RAMP REMOVED 8-5-20 SAN SWR UPDATES: ULOS ADDED 5-26-20 DATE: 8/6/2020 3:25 PM SCALE: 1" = 40' DESIGNED BY: KDF REVISION: | | U-1 12989 | |

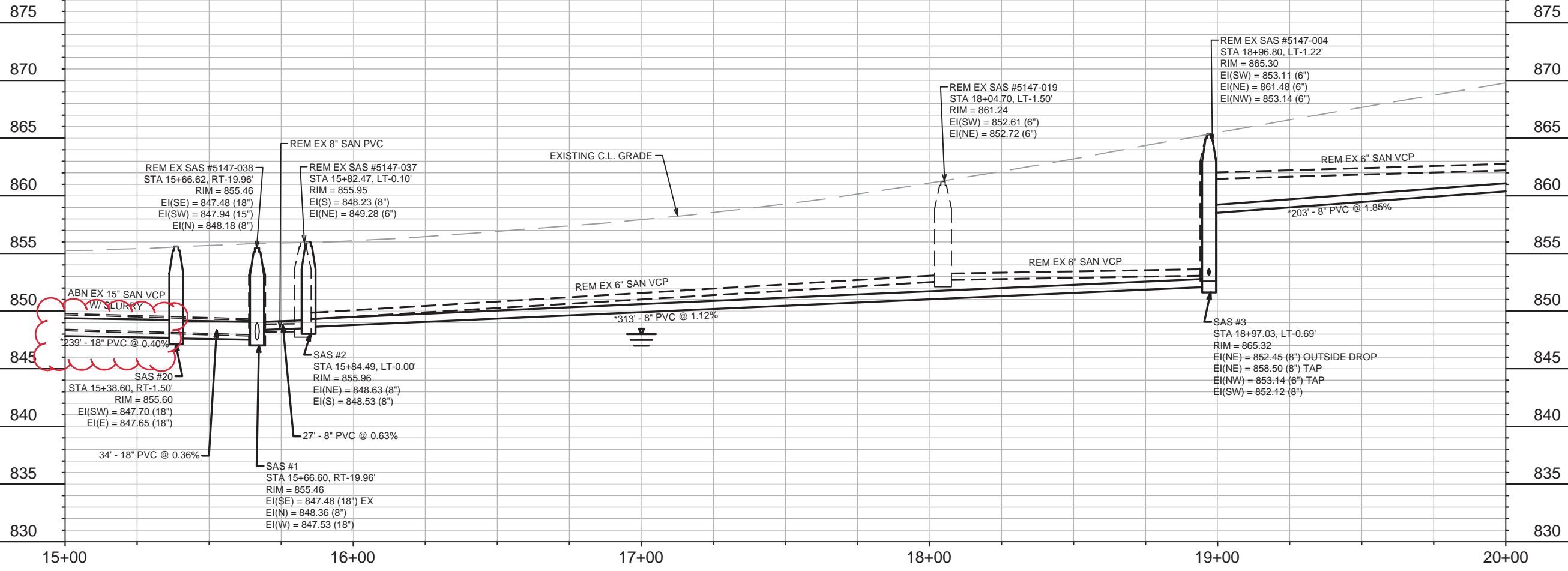


CONTRACTOR SHALL REM & REP SIDEWALK AND CURB AS NEEDED FOR LATERALS (MAX. OF 4 SW SQUARES & 20 LF CURB PER LATERAL)

CONTRACTOR SHALL PATCH ASPHALT PAVEMENT WITH UTILITY TRENCH PATCH TYPE III & ALL DISTURBED DRIVEWAY APRONS SHALL BE REPLACED WITH 7" CONCRETE

* MAIN AND LATERALS SHALL CONFORM TO SPECIFICATIONS OF AWWA C900/C905 PRESSURE PIPE

LATERAL CONFIRMED FROM PARKS SHELTER TO SAS #5147-003



| | | | |
|------|---------------------------------|---------|-----|
| MARK | REVISION | DATE | BY |
| 1 | SAN SWR UPDATES: RAMPS REMOVED | 8-5-20 | KDF |
| 2 | SANITARY SEWER STRUCTURES MOVED | 5-26-20 | KDF |

Designed By: KDF Date: 8/6/2020 3:25 PM Scale: 1" = 40'

12989
MADISON, WI
8864
CONTRACT NO:

UTILITY PLAN & PROFILE
E. GORHAM STREET RESURFACING: UTILITIES
M:\DESIGN\Projects\12756\CAD\Sanitary\12756SAN-Pipe Network.dwg

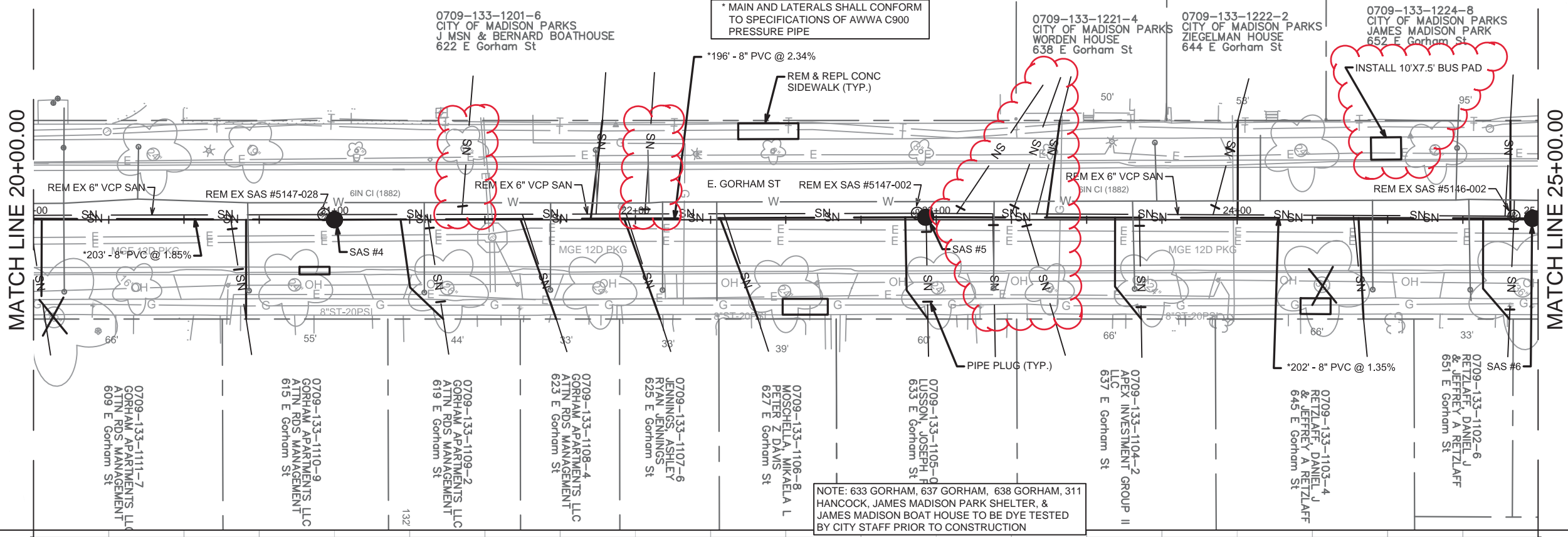


12989
U-2

CONTRACTOR SHALL PATCH ASPHALT PAVEMENT WITH UTILITY TRENCH PATCH TYPE III & ALL DISTURBED DRIVEWAY APRONS SHALL BE REPLACED WITH 7" CONCRETE

CONTRACTOR SHALL REM & REP SIDEWALK AND CURB AS NEEDED FOR LATERALS (MAX. OF 4 SW SQUARES & 20 LF CURB PER LATERAL)

* MAIN AND LATERALS SHALL CONFORM TO SPECIFICATIONS OF AWWA C900 PRESSURE PIPE



0709-133-1111-7
GORHAM APARTMENTS LLC
ATTN: RDS MANAGEMENT
609 E Gorham St

0709-133-1110-9
GORHAM APARTMENTS LLC
ATTN: RDS MANAGEMENT
615 E Gorham St

0709-133-1109-2
GORHAM APARTMENTS LLC
ATTN: RDS MANAGEMENT
619 E Gorham St

0709-133-1108-4
GORHAM APARTMENTS LLC
ATTN: RDS MANAGEMENT
623 E Gorham St

0709-133-1107-6
JENNINGS, ASHLEY
RYAN JENNINGS
625 E Gorham St

0709-133-1106-8
MOSCHIELLA, MIKALIA L
PETER Z DAVIS
627 E Gorham St

0709-133-1105-0
LUSSON, JOSEPH F
633 E Gorham St

0709-133-1104-2
APEX INVESTMENT GROUP II
LLC
637 E Gorham St

0709-133-1103-4
RETZLAFF, DANIEL J
& JEFFREY A RETZLAFF
645 E Gorham St

0709-133-1102-6
RETZLAFF, DANIEL J
& JEFFREY A RETZLAFF
651 E Gorham St

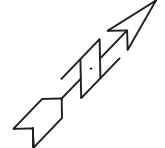
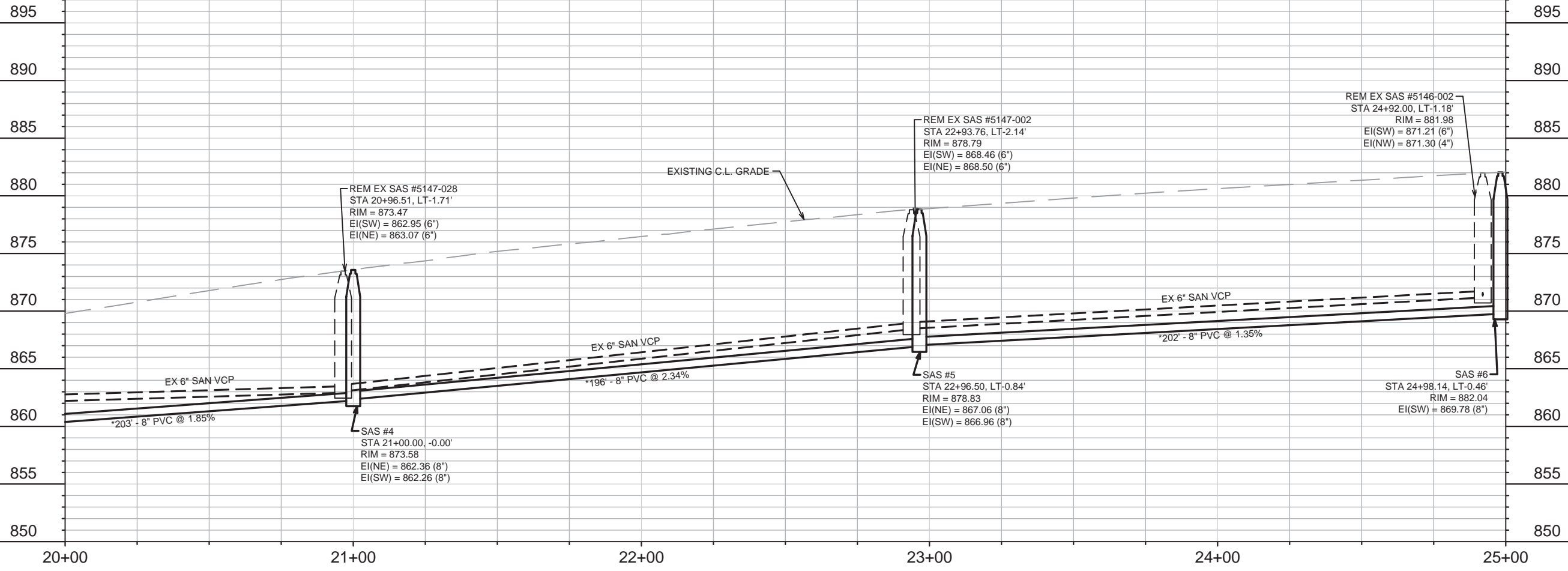
0709-133-1201-6
CITY OF MADISON PARKS
J MSN & BERNARD BOATHOUSE
622 E Gorham St

0709-133-1221-4
CITY OF MADISON PARKS
WORDEN HOUSE
638 E Gorham St

0709-133-1222-2
CITY OF MADISON PARKS
ZIEGELMAN HOUSE
644 E Gorham St

0709-133-1224-8
CITY OF MADISON PARKS
JAMES MADISON PARK
652 E Gorham St

NOTE: 633 GORHAM, 637 GORHAM, 638 GORHAM, 311 HANCOCK, JAMES MADISON PARK SHELTER, & JAMES MADISON BOAT HOUSE TO BE DYE TESTED BY CITY STAFF PRIOR TO CONSTRUCTION

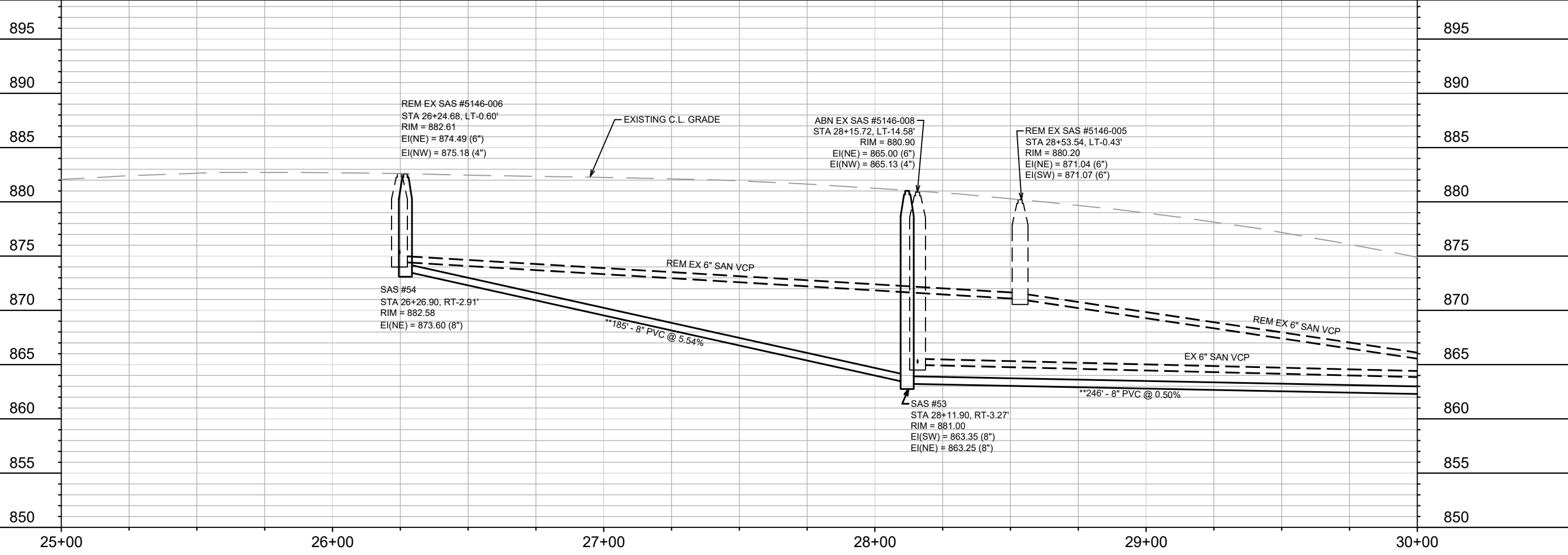
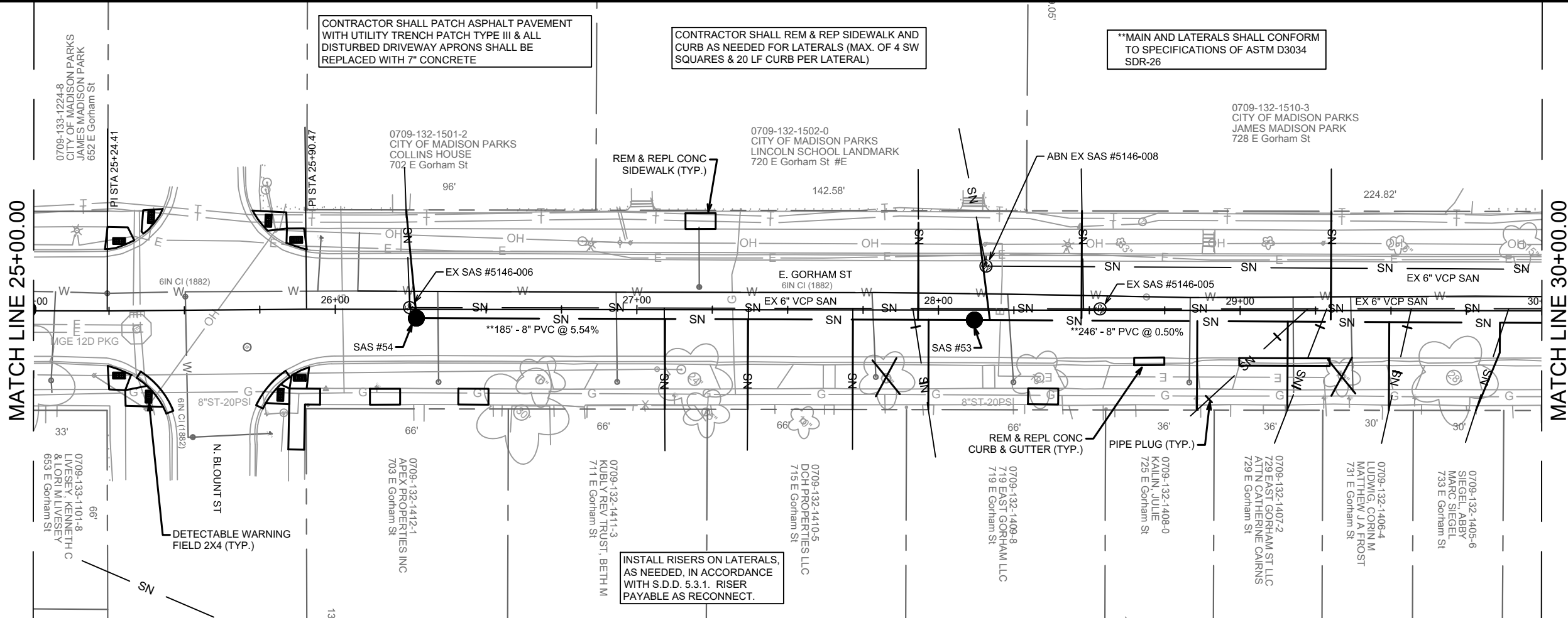


| | | | |
|------|-------------------------------|---------|-----|
| MARK | REVISION | DATE | BY |
| 2 | BUS PAD CHANGED, LAT. UPDATES | 8-5-20 | KDF |
| 1 | BUS PAD ADDED, LAT. UPDATES | 5-26-20 | KDF |

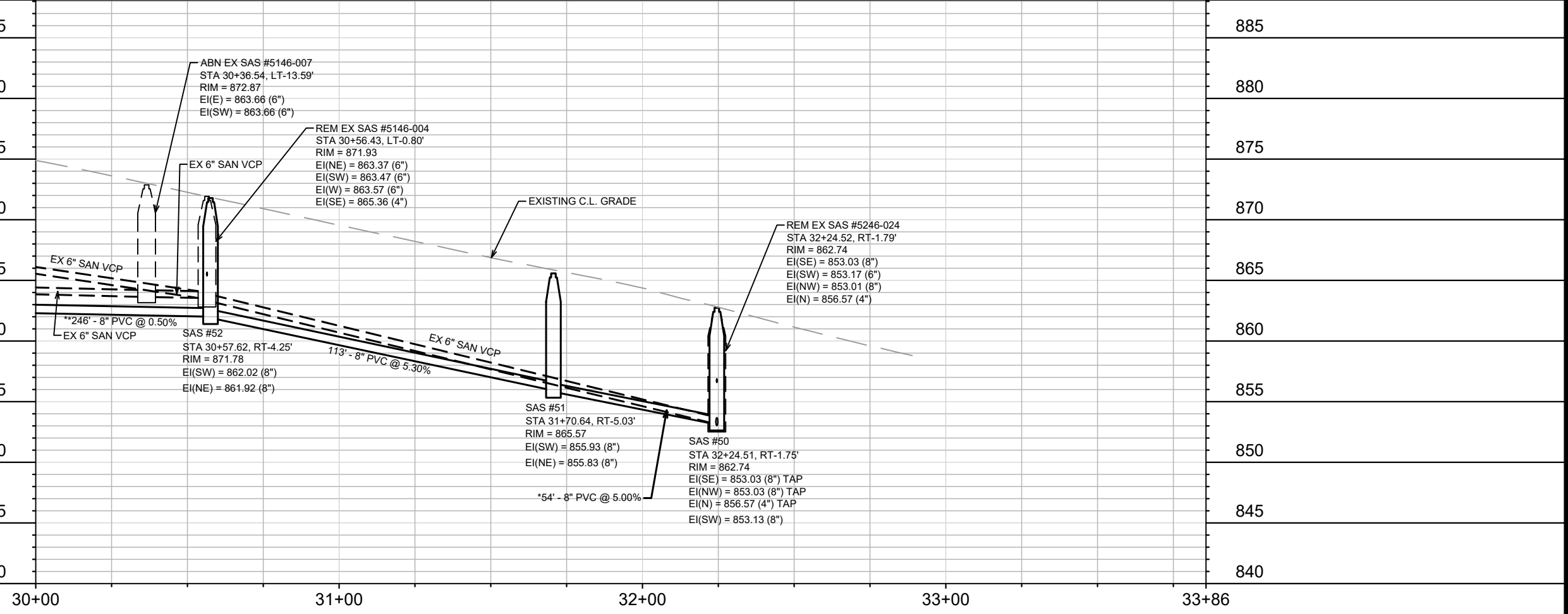
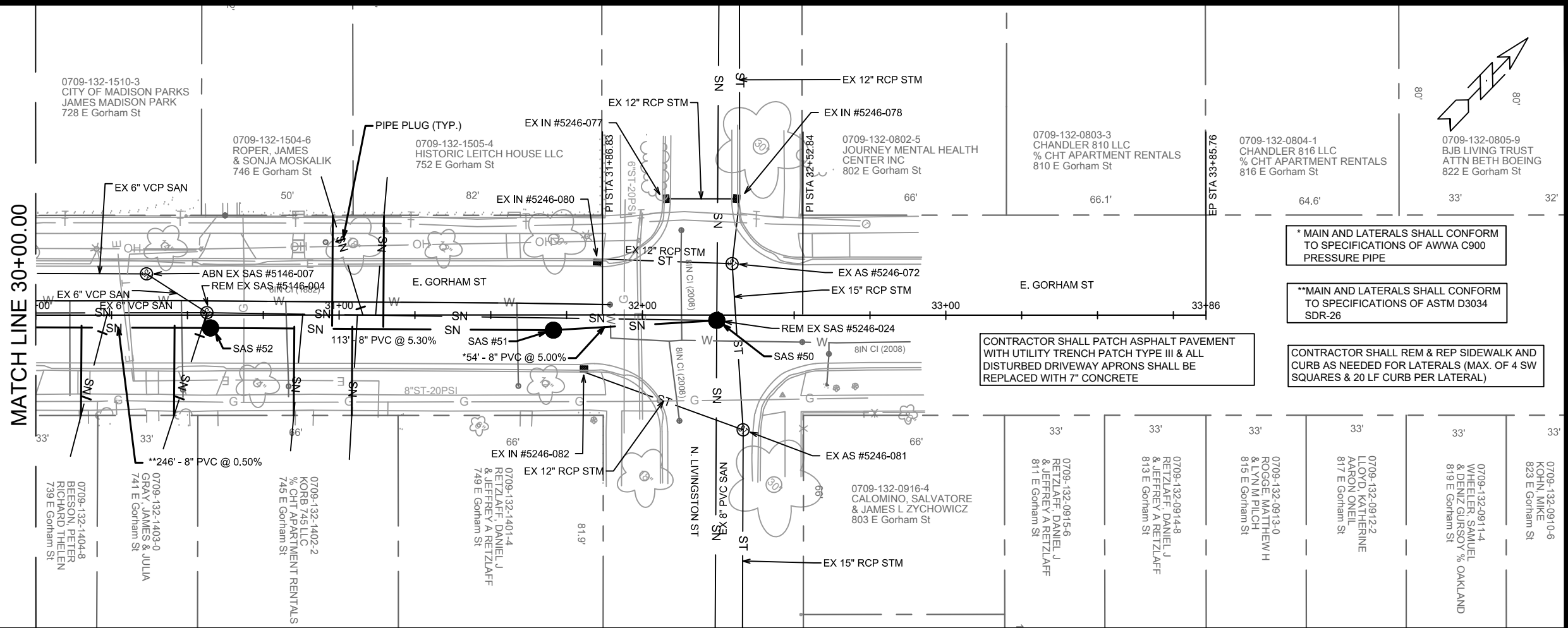
Designed By: KDF Date: 8/6/2020 3:25 PM Scale: 1" = 40'

12989 U-3

12989
MADISON, WI
CONTRACT NO.: 8864
UTILITY PLAN & PROFILE
E. GORHAM STREET RESURFACING: UTILITIES
M:\DESIGN\Projects\12756\CAD\Sanitary\12756SAN-Pipe Network.dwg



| | | | |
|---|-------------|-------------------|-----|
| 12989 | MADISON, WI | 8864 | U-4 |
| UTILITY PLAN & PROFILE | | CONTRACT NO: 8864 | |
| E. GORHAM STREET RESURFACING: UTILITIES | | U-4 | |
| M:\DESIGN\Projects\12756\CAD\Sanitary\12756SAN-Pipe Network.dwg | | | |
| | | | |
| 12989 | | U-4 | |



* MAIN AND LATERALS SHALL CONFORM TO SPECIFICATIONS OF AWWA C900 PRESSURE PIPE

** MAIN AND LATERALS SHALL CONFORM TO SPECIFICATIONS OF ASTM D3034 SDR-26

CONTRACTOR SHALL PATCH ASPHALT PAVEMENT WITH UTILITY TRENCH PATCH TYPE III & ALL DISTURBED DRIVEWAY APRONS SHALL BE REPLACED WITH 7" CONCRETE

CONTRACTOR SHALL REM & REP SIDEWALK AND CURB AS NEEDED FOR LATERALS (MAX. OF 4 SW SQUARES & 20 LF CURB PER LATERAL)

| | |
|-----------------|-------------------------|
| DATE | BY |
| REVISION | DATE |
| MARK | DESIGNED BY: ## |
| 12989 | Date: 5/14/2020 3:23 PM |
| Scale: 1" = 40' | U-5 |

12989
MADISON, WI
8864
CONTRACT NO:

UTILITY PLAN & PROFILE
E. GORHAM STREET RESURFACING: UTILITIES
M:\DESIGN\Projects\12756\CAD\Sanitary\12756SAN-Pipe Network.dwg

12989
U-5

SANITARY SEWER SCHEDULE

*REV 5/26/20 KDF
**REV 7/28/20 KDF

| | |
|--|------------------|
| E. GORHAM STREET RESURFACING: PROJECT NO. 11865 | SHEET NO. U-6 |
| SANITARY SEWER SCHEDULE | |
| CITY OF MADISON | |

PROPOSED SANITARY STRUCTURES

| SAS NO. | STATION | LOCATION (OFFSET) | TOP OF CASTING | E.I. | DEPTH | NOTES |
|-------------------------|-----------------|-------------------|----------------|---------------|-------------|--------------|
| E. GORHAM STREET | | | | | | |
| SAS #1 | 15+66.60 | RT-19.96 | 855.46 | 847.48 | 7.98 | [1], [2] |
| SAS #2 | 15+84.49 | CL | 855.96 | 848.53 | 7.43 | [1], [2] |
| SAS #3 | 18+97.03 | LT-0.69 | 865.32 | 852.12 | 13.20 | OUTSIDE DROP |
| SAS #4 | 21+00.00 | CL | 873.58 | 862.26 | 11.32 | - |
| SAS #5 | 22+96.50 | LT-0.84 | 878.83 | 866.96 | 11.87 | - |
| SAS #6 | 24+98.14 | LT-0.46 | 882.04 | 869.78 | 12.26 | - |
| SAS #20 | 15+38.60 | RT-1.50 | 855.6 | 847.65 | 7.95 | [1], [2] |
| ** SAS #21 | 13+00.00 | CL | 855.15 | 848.65 | 6.50 | - |
| SAS #21A | 12+98.10 | RT-113.89 | 855.21 | 851.02 | 4.19 | - |
| ** SAS #22 | 11+16.32 | CL | 859.46 | 850.27 | 9.19 | - |
| SAS #50 | 32+24.51 | RT-1.75 | 862.74 | 853.03 | 9.71 | - |
| SAS #51 | 31+70.64 | RT-5.03 | 865.57 | 855.83 | 9.74 | [3] |
| SAS #52 | 30+57.62 | RT-4.25 | 871.78 | 861.91 | 9.87 | [3] |
| SAS #53 | 28+11.90 | RT-3.27 | 881.00 | 863.25 | 17.75 | [3] |
| SAS #54 | 26+26.90 | RT-2.91 | 882.58 | 873.60 | 8.98 | [3] |

PROPOSED SANITARY PIPES

| FROM (DNSTM) | TO (UPSTM) | DWNSTRM E.I. | UPSTRM E.I. | PLAN (PAY) LGTH (FT) | SLOPE (%) | PIPE SIZE | PVC TYPE | NOTES |
|-------------------------|------------------|---------------|---------------|----------------------|---------------|------------|----------|-------|
| E. GORHAM STREET | | | | | | | | |
| SAS #1 | SAS #2 | 848.36 | 848.53 | 27 | 0.63% | 8" | SDR-35 | - |
| SAS #2 | SAS #3 | 848.63 | 852.12 | 313 | 1.12% | 8" | C900 | - |
| SAS #3 | SAS #4 | 858.50 | 862.26 | 203 | 1.85% | 8" | C900 | - |
| SAS #4 | SAS #5 | 862.36 | 866.96 | 197 | 2.34% | 8" | C900 | - |
| SAS #5 | SAS #6 | 867.06 | 869.78 | 202 | 1.35% | 8" | C900 | - |
| SAS #1 | SAS #20 | 847.53 | 847.65 | 34 | 0.36% | 18" | SDR-35 | - |
| ** SAS #20 | SAS #21 | 847.70 | 848.65 | 239 | 0.40% | 18" | C900 | - |
| ** SAS #21 | SAS #22 | 848.75 | 850.27 | 183 | 0.83% | 16" | C900 | - |
| SAS #22 | EX SAS #5048-067 | 850.37 | 856.79 | 125 | 5.15% | 8" | C900 | - |
| ** SAS #21 | EX SAS #5047-021 | 848.75 | 850.28 | 15 | 10.44% | 15" | SDR-35 | - |
| EX SAS #5047-021 | SAS #21A | 850.62 | 851.02 | 99 | 0.40% | 8" | SDR-35 | - |
| SAS #50 | SAS #51 | 853.13 | 855.83 | 54 | 5.00% | 8" | C900 | - |
| SAS #51 | SAS #52 | 855.93 | 861.91 | 113 | 5.30% | 8" | SDR-35 | - |
| SAS #52 | SAS #53 | 862.02 | 863.25 | 246 | 0.50% | 8" | SDR-26 | - |
| SAS #53 | SAS #54 | 863.35 | 873.60 | 185 | 5.54% | 8" | SDR-26 | - |

SANITARY STRUCTURE REMOVALS & ABANDONMENTS

| STRUCTURE ID NO. | STATION | LOCATION (OFFSET) | TOP OF CASTING | E.I. | DEPTH | NOTES |
|-------------------------|----------|-------------------|----------------|--------|-------|---------|
| E. GORHAM STREET | | | | | | |
| SAS #5047-015 | 11+16.54 | RT-1.15 | 859.45 | 850.78 | 8.67 | REMOVE |
| SAS #5047-001 | 12+96.67 | RT-0.80 | 855.27 | 850.32 | 4.95 | REMOVE |
| SAS #5147-054 | 14+13.09 | RT-15.80 | 854.62 | 849.04 | 5.58 | ABANDON |
| SAS #5147-038 | 15+66.62 | RT-19.96 | 855.46 | 847.48 | 7.98 | REMOVE |
| SAS #5147-037 | 15+82.47 | LT-1.00 | 855.95 | 848.23 | 7.72 | REMOVE |
| SAS #5147-019 | 18+04.70 | LT-1.50 | 861.24 | 852.61 | 8.63 | REMOVE |
| SAS #5147-004 | 18+96.80 | LT-1.22 | 865.30 | 853.11 | 12.19 | REMOVE |
| SAS #5147-028 | 20+96.51 | LT-1.71 | 873.47 | 862.95 | 10.52 | REMOVE |
| SAS #5147-002 | 22+93.76 | LT-2.14 | 878.79 | 868.46 | 10.33 | REMOVE |
| SAS #5146-002 | 24+92.00 | LT-1.18 | 881.98 | 871.21 | 10.77 | REMOVE |
| SAS #5146-006 | 26+24.68 | LT-0.60 | 882.61 | 874.49 | 8.12 | REMOVE |
| SAS #5146-008 | 28+15.72 | LT-14.58 | 880.90 | 865.00 | 15.90 | ABANDON |
| SAS #5146-005 | 28+53.54 | LT-0.43 | 880.20 | 871.04 | 9.16 | REMOVE |
| SAS #5146-007 | 30+36.54 | LT-13.59 | 872.87 | 863.66 | 9.21 | ABANDON |
| SAS #5146-004 | 30+56.43 | LT-0.80 | 871.93 | 863.37 | 8.56 | REMOVE |
| SAS #5246-024 | 32+24.52 | RT-1.79 | 862.74 | 853.03 | 9.71 | REMOVE |

SANITARY PIPES REMOVALS & ABANDONMENTS

| REMOVE FROM | REMOVE TO | LGTH (FT) | PIPE SIZE | PIPE TYPE | PAID (Y/N) | NOTES |
|-------------------------|---------------|-----------|-----------|-----------|------------|------------------------|
| E. GORHAM STREET | | | | | | |
| SAS #5048-067 | SAS #5048-024 | 10 | 6" | PVC | N | REMOVE |
| SAS #5047-015 | SAS #5048-067 | 125 | 8" | VCP | N | REMOVE |
| SAS #5047-001 | SAS #5047-015 | 180 | 12" | VCP | N | REMOVE |
| SAS #5047-021 | SAS #5047-001 | 12 | 12" | VCP | N | REMOVE |
| SAS #5047-021 | SAS #21A | 99 | 8" | VCP | N | REMOVE |
| SAS #5147-054 | SAS #5047-021 | 110 | 15" | VCP | Y | ABAN W/ SLURRY (5CY) |
| SAS #5147-038 | SAS #5147-054 | 149 | 15" | VCP | Y | ABAN W/ SLURRY (6.8CY) |
| SAS #5147-038 | SAS #5147-037 | 21 | 8" | PVC | N | REMOVE |
| SAS #5147-037 | SAS #5147-019 | 218 | 6" | VCP | N | REMOVE |
| SAS #5147-019 | SAS #5147-004 | 88 | 6" | VCP | N | REMOVE |
| SAS #5147-004 | SAS #5147-028 | 195 | 6" | VCP | N | REMOVE |
| SAS #5147-028 | SAS #5147-002 | 193 | 6" | VCP | N | REMOVE |
| SAS #5147-002 | SAS #5146-002 | 194 | 6" | VCP | N | REMOVE |
| SAS #5146-005 | SAS #5146-006 | 224 | 6" | VCP | N | REMOVE |
| SAS #5146-004 | SAS #5146-005 | 199 | 6" | VCP | N | REMOVE |
| SAS #5246-024 | SAS #5146-004 | 164 | 6" | VCP | N | REMOVE |
| SAS #5146-007 | SAS #5146-008 | 216 | 6" | VCP | Y | ABAN W/ SLURRY (1.6CY) |
| SAS #5146-004 | SAS #5146-007 | 20 | 6" | VCP | Y | ABAN W/ SLURRY (0.2CY) |

* UTILITY LINE OPENINGS - ULOs (5 ADDITIONAL INDISTRIBUTED ULOs INCLUDED)

| ULO NO. | STATION | LOCATION TYPE (OFFSET) | TOP ELEV. | NOTES |
|-------------------------|----------|------------------------|-----------|------------------------------|
| E. GORHAM STREET | | | | |
| ** ULO1 | 11+16.75 | RT-6.11 ELECT DUCT | 856.97 | BTM =854.47 |
| ** ULO2 | 11+18.90 | LT-6.63 8" WATER | 854.73 | - |
| ** ULO3 | 13+00.80 | RT-5.90 ELECT DUCT | 853.11 | BTM=850.49 |
| ** ULO4 | 13+00.30 | LT-6.31 8" WATER | 850.06 | - |
| ** ULO5 | 13+48.10 | RT-2.90 ELECT STRUCT | 854.68 | ULO WAS AT EDGE OF STRUCTURE |
| ** ULO6 | 13+48.05 | RT-0.70 ELECT DUCT | 852.24 | BTM=850.62 |

SPECIFIC NOTES

- [1] INSTALL INTERNAL CHIMNEY SEAL PER S.D.D. 5.7.17
- [2] INSTALL EXTERNAL SEWER ACCESS STRUCTURE JOINT SEAL
- [3] PROVIDE OFFSET CONE TO PLACE CONE AT EDGE OF TRAVEL LANE