



Madison, Wisconsin

INDEX OF SHEETS

SHEET NO. D1-D2	TYPICAL SECTIONS
SHEET NO. EC-1	GRADING AND EROSION CONTROL
SHEET NO. R1-R2	SIDEWALK REMOVALS
SHEET NO. P1-P4	PLAN & PROFILES
SHEET NO. PM-1	PAVEMENT MARKINGS
SHEET NO. X1-X7	CROSS SECTIONS
SHEET NO. MQ-1	MISCELLANEOUS QUANTITIES

CITY OF MADISON

CITY ENGINEERING DIVISION

DEPARTMENT OF PUBLIC WORKS

PLAN OF PROPOSED IMPROVEMENT

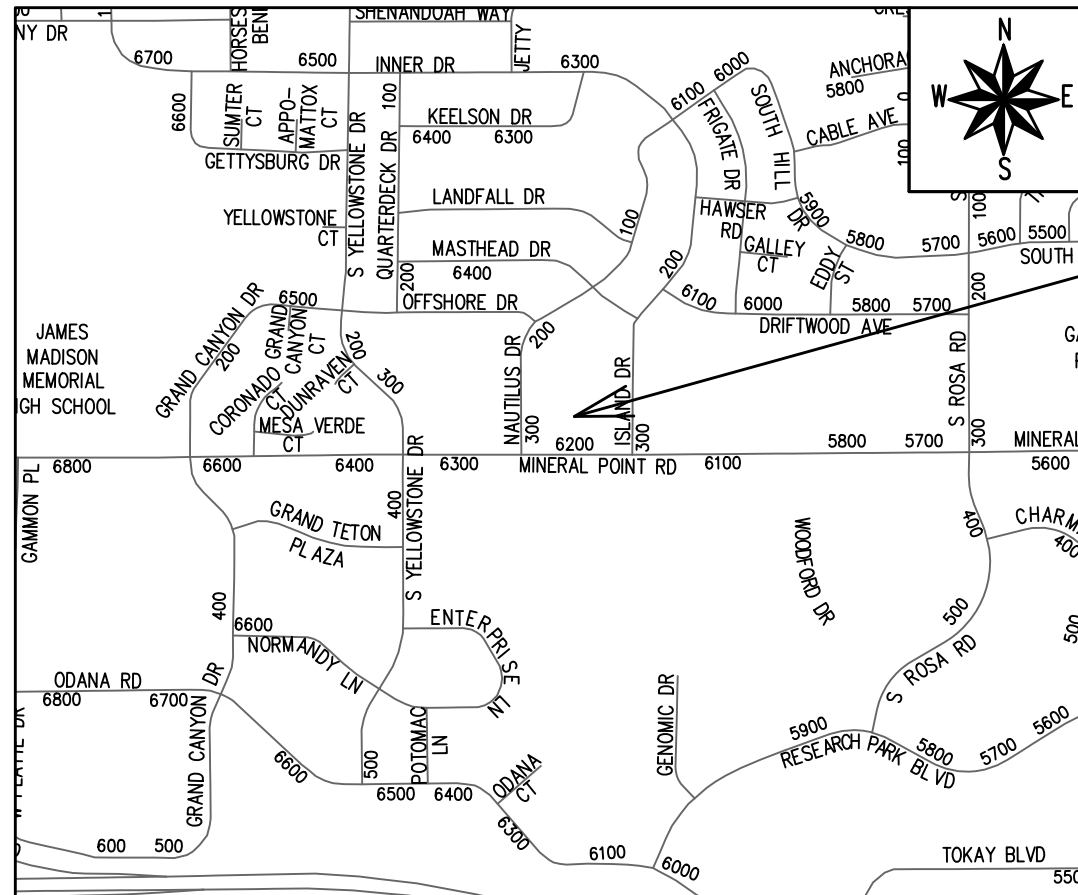
NAUTILUS POINT PARK WIDENED SIDEWALK

CONTRACT 8717 PLAN SUPPLEMENT

CITY PROJECT NO. 12777B
 CONTRACT NO. 8717

CONVENTIONAL SIGNS	
FIELD VERIFY ALL UTILITY LOCATIONS	
GAS	— G —
STORM SEWER	— ST —
SANITARY SEWER	— SN —
WATER	— W —
BURIED ELECTRIC	— E —
OVERHEAD ELECTRIC	— OH —
POWER POLE	
ADA COMPLIANT RAMP W/ DETECTABLE WARNING FIELD	
COMBUSTIBLE FLUIDS	

NOTES:
 - ALL GUTTERS SHALL DRAIN WITH A MINIMUM GRADE OF 0.5% TOWARD STORM SEWER INLETS
 - SIDEWALK RAMPS SHALL HAVE A MAXIMUM SLOPE OF 1" PER 12". SIDEWALK AND CURB RAMPS SHALL BE CONSTRUCTED WITH A SIDE SLOPE OF 2.00%.
 SIDEWALK SHALL HAVE A MINIMUM LONGITUDINAL SLOPE OF 0.5% AND A MAXIMUM LONGITUDINAL SLOPE OF 5.00% EXCEPT WHERE STREET GRADES EXCEED 5.00%



PROJECT
 LOCATION

PUBLIC IMPROVEMENT PROJECT APPROVED

07/16/2024

BY THE COMMON COUNCIL OF MADISON, WISCONSIN

PUBLIC IMPROVEMENT DESIGN APPROVED BY:

Aug 8, 2024

City Engineer

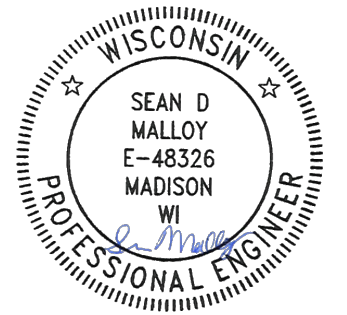
Date

STREET DESIGNED BY:



Aug 8, 2024

PAVEMENT MARKINGS DESIGNED BY:



Aug 8, 2024

PLOT SCALE: 1:1_XREF

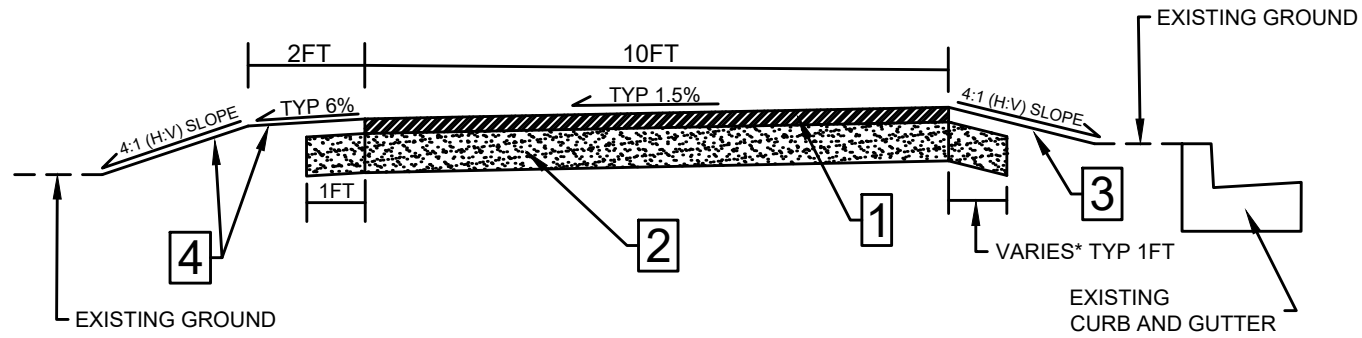
PLOT NAME: ---

REV. DATE: 7/24/2024 6:41 PM

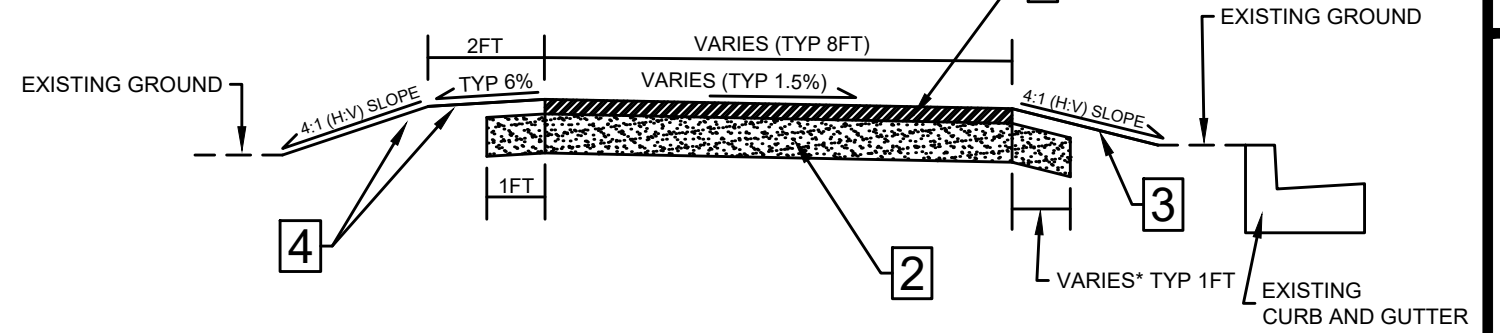
ORIGINATOR: CITY_OF_MADISON

GENERAL NOTES:

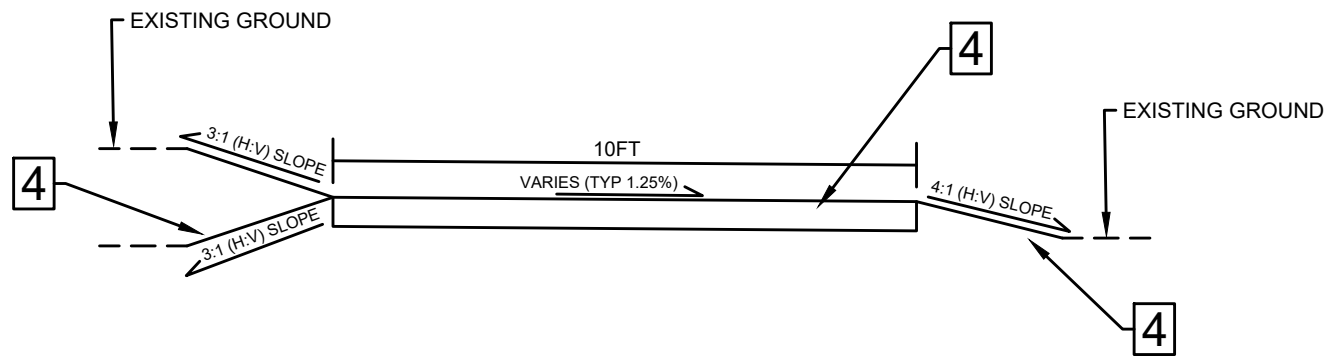
- 1) 3" HMA PAVEMENT - TYPE 4 LT 58-28 S
- 2) 8" BASE AGGREGATE DENSE 1 1/4-INCH
- 3) 6" TOPSOIL, TERRACE SEED MIX, CLASS I, URBAN TYPE B ORGANIC MATTING
- 4) 6" TOPSOIL, AGGRESSIVE NATIVE SEED MIX, CLASS I, URBAN TYPE A ORGANIC MATTING
- 5) *CONTRACTOR CAN NARROW 1' EXTENSION OF 8" BASE AGGREGATE DENSE 1 1/4-INCH TO 0.5' WHEN WITHIN 5' OF TREES



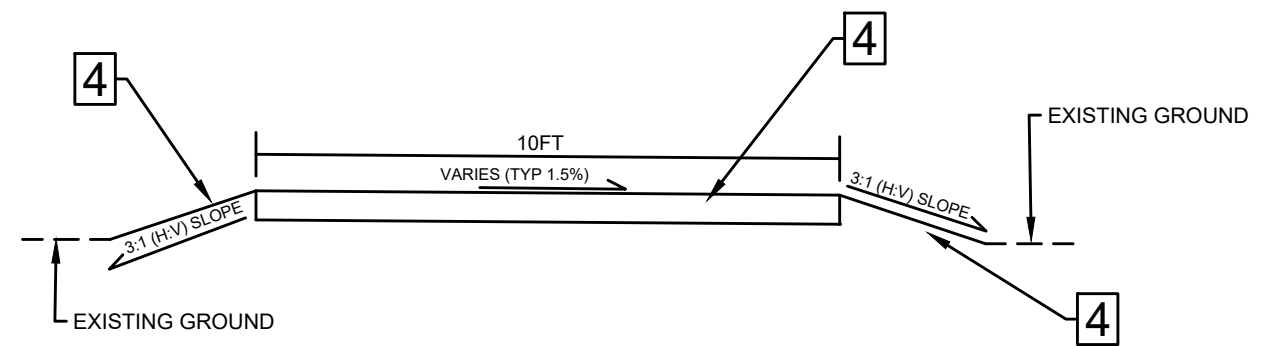
FINISHED TYPICAL SECTION
WIDENED SIDEWALK - MINERAL PT RD
(STA 100+10 - 103+00)



FINISHED TYPICAL SECTION
WIDENED SIDEWALK - MINERAL PT RD
(STA 103+00 - 103+80.06)



FINISHED TYPICAL SECTION
MAINTENANCE PATH WEST - MINERAL PT RD
(STA 300+00 - 301+00)



FINISHED TYPICAL SECTION
MAINTENANCE PATH EAST - MINERAL PT RD
(STA 200+00 - 201+00)

DATE	BY
REVISION	Scale: Custom
Designed By: JN	Date: 8/7/2024 5:58 PM
12777B	D-1

12777B
MADISON, WI
CONTRACT NO: 8717

TYPICAL SECTIONS
NAUTILUS POINT PARK WIDENED SIDEWALK
M:\DESIGN\Projects\13925\CAD\Streets\13925EN-Typical.dwg



12777B
D-1

GENERAL NOTES:
SEE CITY CONTRACT 8717
FOR HATCHED AREA/FLOW
LINE DETAILS

CURB RAMPS SHOWN HAVE
NON-TRAVERSABLE FLARES

INSTALL DETECTABLE WARNINGS
PER ORIGINAL CONTRACT 8717

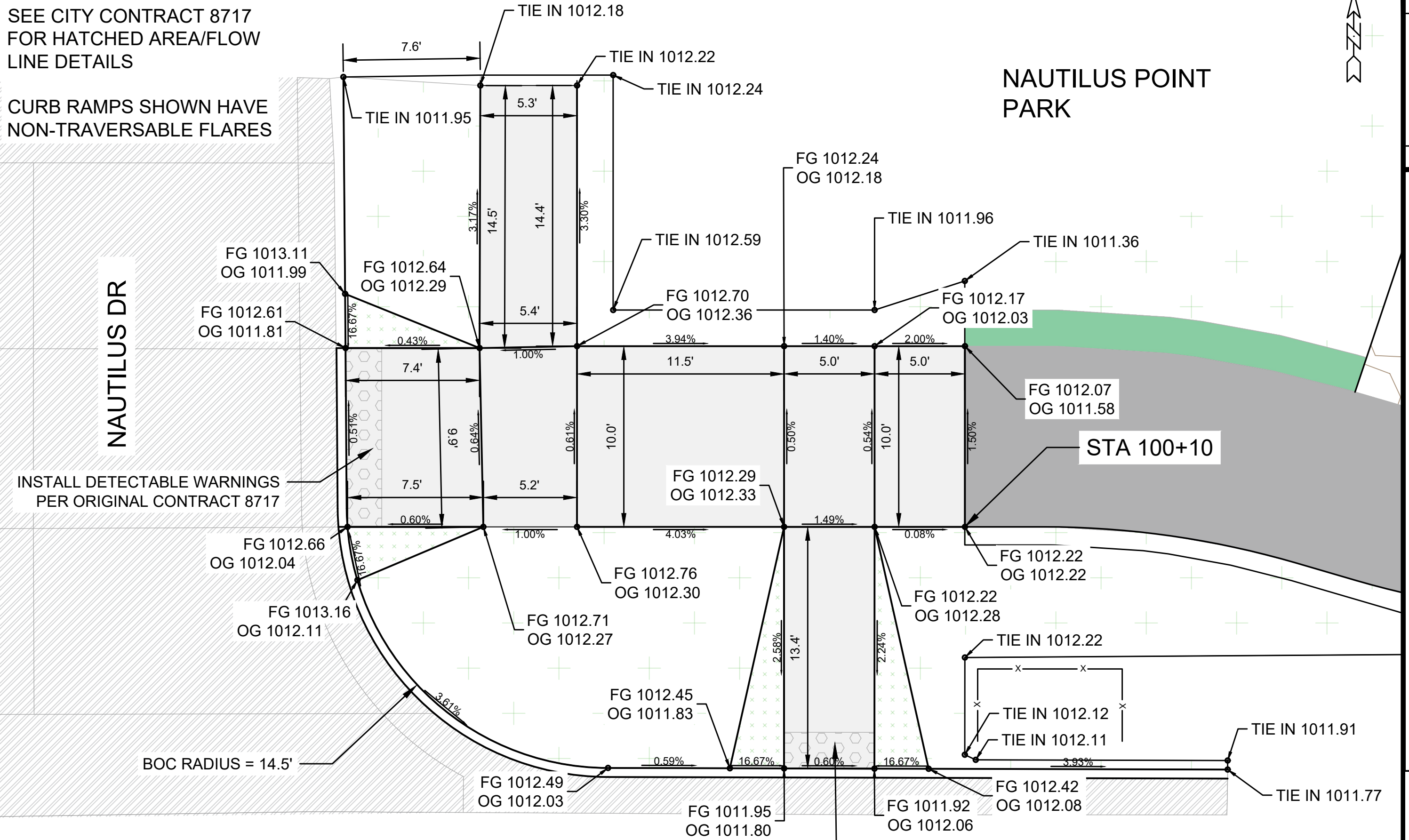
INSTALL DETECTABLE WARNINGS
PER ORIGINAL CONTRACT 8717



NAUTILUS POINT PARK

NAUTILUS DR

STA 100+10



INSTALL DETECTABLE WARNINGS
PER ORIGINAL CONTRACT 8717

INSTALL DETECTABLE WARNINGS
PER ORIGINAL CONTRACT 8717

MARK	REVISION	DATE	BY

12777B
MADISON, WI
CONTRACT NO.: 8717

12777B
MADISON, WI
CONTRACT NO.: 8717

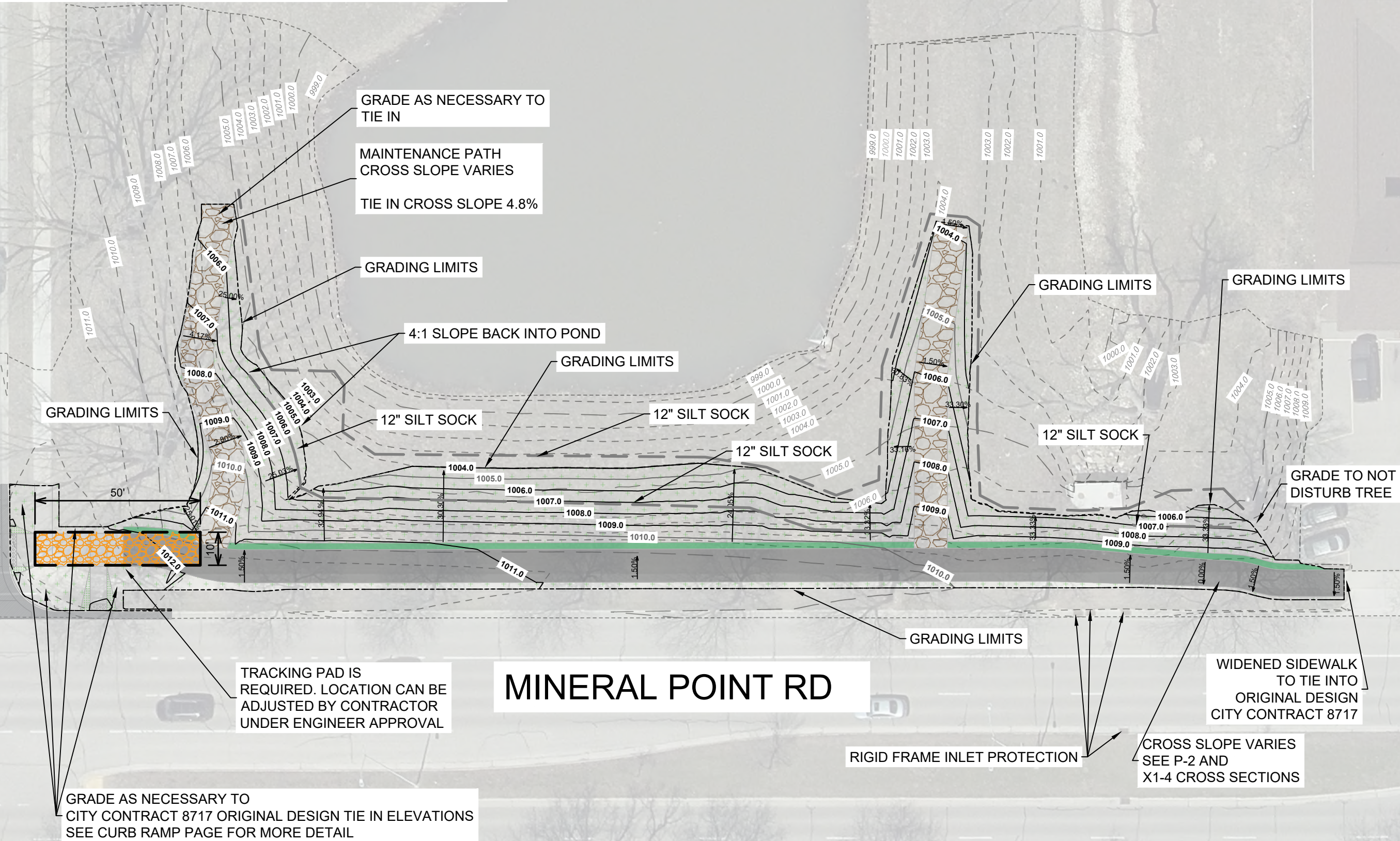


NOTES:

1. SEED ALL AREAS WITHIN THE TERRACE (BETWEEN SIDEWALK AND STREET) WITH TERRACE SEED MIX PER ARTICLE 207 OF THE CITY OF MADISON STANDARD SPECIFICATIONS FOR PUBLIC WORKS CONSTRUCTION.
2. SEED ALL OTHER AREAS WITH AGGRESSIVE NATIVE SEED MIX PER ARTICEL 207 OF THE CITY OF MADISON STANDARD SPECIFICATIONS FOR PUBLIC WORKS CONSTRUCTION.
3. ALL AREAS SHALL RECEIVE CLASS I, URBAN TYPE A ORGANIC MATTING.
4. NO ROOT CUTTING IS ALLOWED WITHOUT CITY OF MADISON FORESTRY APPROVAL

NAUTILUS DR

MINERAL POINT RD



GRADING LIMITS

GRADING LIMITS

GRADING LIMITS

GRADING LIMITS

GRADING LIMITS

12" SILT SOCK

GRADING LIMITS

12" SILT SOCK

12" SILT SOCK

12" SILT SOCK

GRADE TO NOT DISTURB TREE

GRADING LIMITS

TRACKING PAD IS REQUIRED. LOCATION CAN BE ADJUSTED BY CONTRACTOR UNDER ENGINEER APPROVAL

GRADE AS NECESSARY TO CITY CONTRACT 8717 ORIGINAL DESIGN TIE IN ELEVATIONS SEE CURB RAMP PAGE FOR MORE DETAIL

GRADE AS NECESSARY TO TIE IN

MAINTENANCE PATH CROSS SLOPE VARIES

TIE IN CROSS SLOPE 4.8%

4:1 SLOPE BACK INTO POND

WIDENED SIDEWALK TO TIE INTO ORIGINAL DESIGN CITY CONTRACT 8717

RIGID FRAME INLET PROTECTION

CROSS SLOPE VARIES SEE P-2 AND X1-4 CROSS SECTIONS

MARK	REVISION	DATE	BY
12777B		8/7/2024 5:59 PM	
Scale: 1:30			EC-1

12777B
MADISON, WI
CONTRACT NO: 8717

GRADING PLAN AND EROSION CONTROL
NAUTILUS POINT PARK WIDENED SIDEWALK
M:\DESIGN\Projects\13925\CAD\Streets\13925EN-EC.dwg



12777B
EC-1

NAUTILUS DR

NAUTILUS POINT PARK



HYDRANT TO BE RELOCATED
(BY CONTRACTOR)



PEDESTAL TO BE REMOVED
(BY CHARTER)

REMOVE SIDEWALK

ADJUSTING PULL BOX
(BY CHARTER)

SEE ORIGINAL DESIGN PLAN
FOR CURB REMOVAL
CITY CONTRACT 8717

MINERAL POINT RD

MARK	REVISION	DATE	BY
12777B	Date: 8/7/2024 6:00 PM		R-1

12777B
MADISON, WI
CONTRACT NO: 8717

WIDENED SIDEWALK REMOVALS
NAUTILUS POINT PARK WIDENED SIDEWALK
M:\DESIGN\Projects\13925\CAD\Plan Sheets\Widened Sidewalk Removals - (2).dwg



12777B
R-1

NAUTILUS POINT
PARK

REMOVE BUSHES

EXISTING FENCE
TO REMAIN

REMOVE SIDEWALK

TREE REMOVED BY
CITY FORESTRY

SEE ORIGINAL DESIGN PLAN
FOR CURB REMOVALS
CITY CONTRACT 8717

MINERAL POINT RD

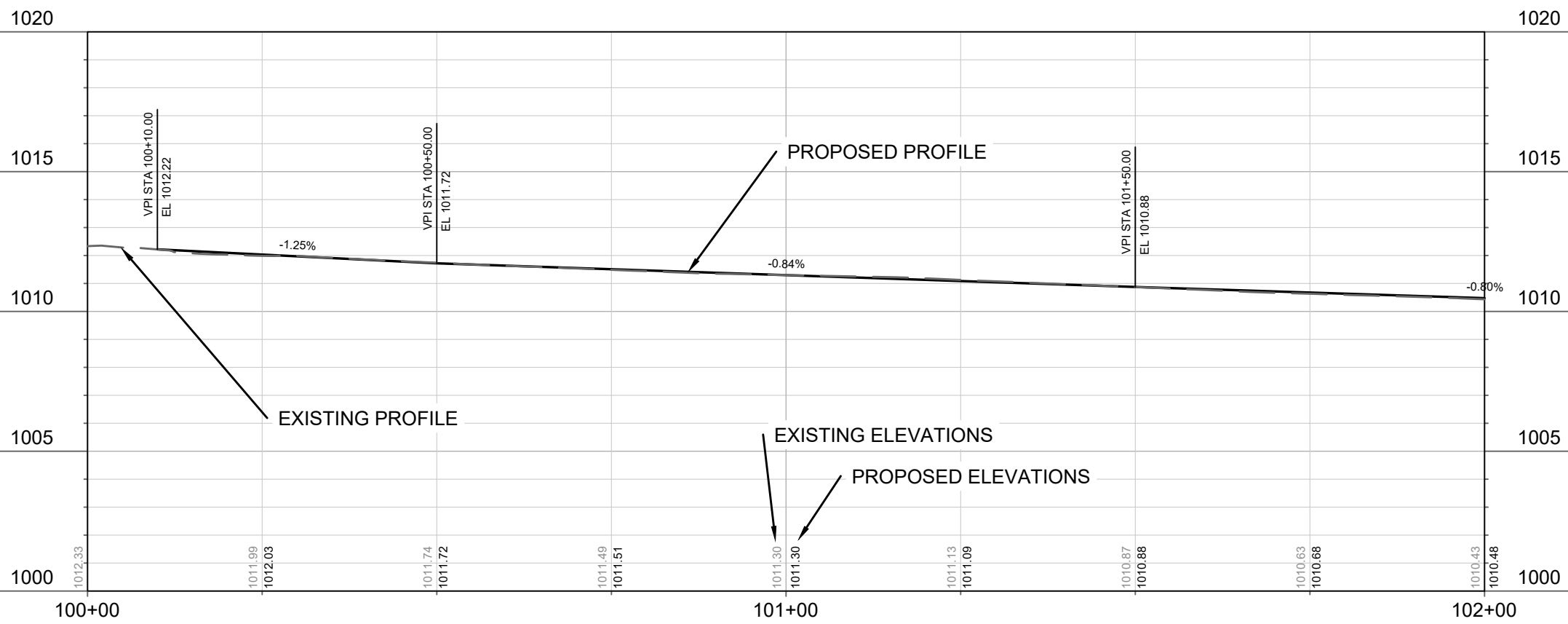
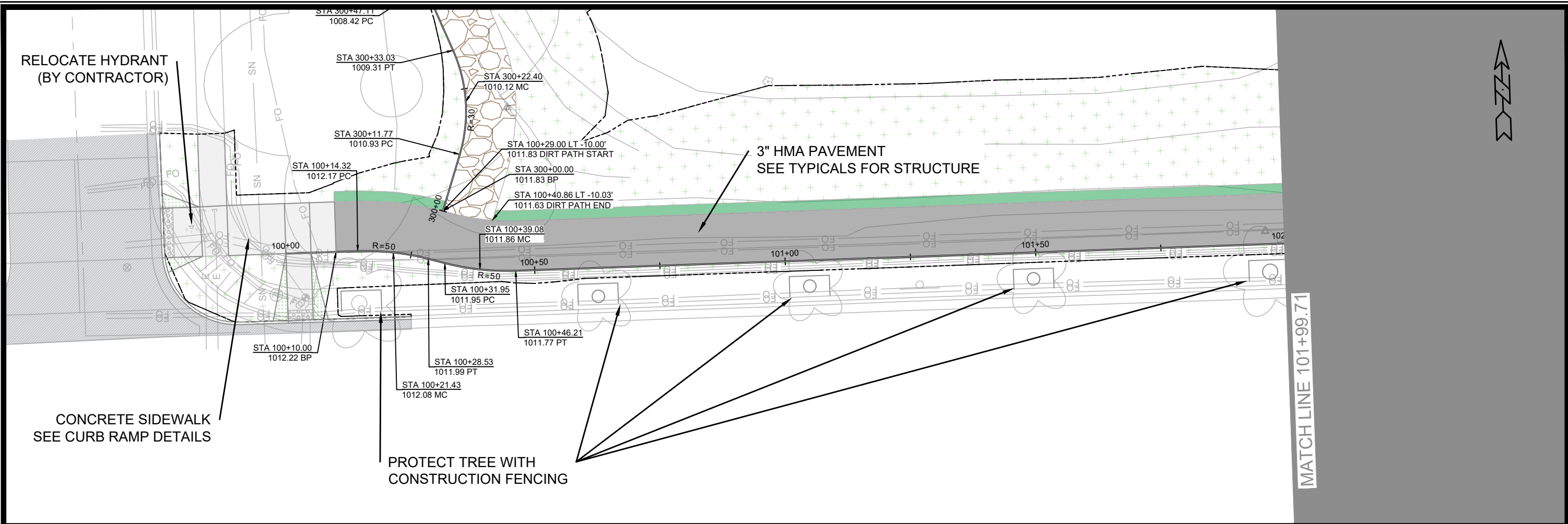


##	##	##	##
MARK	REVISION	DATE	BY
12777B		Date: 8/7/2024 6:01 PM	Scale: 1" = 20'
			R-2

12777B
 MADISON, WI
 CONTRACT NO: 8717
 WIDENED SIDEWALK REMOVALS
 NAUTILUS POINT PARK WIDENED SIDEWALK
 M:\DESIGN\Projects\13925\CAD\Plan Sheets\Widened Sidewalk Removals - (2).dwg



12777B
 R-2



MARK	REVISION	DATE	BY
12777B			

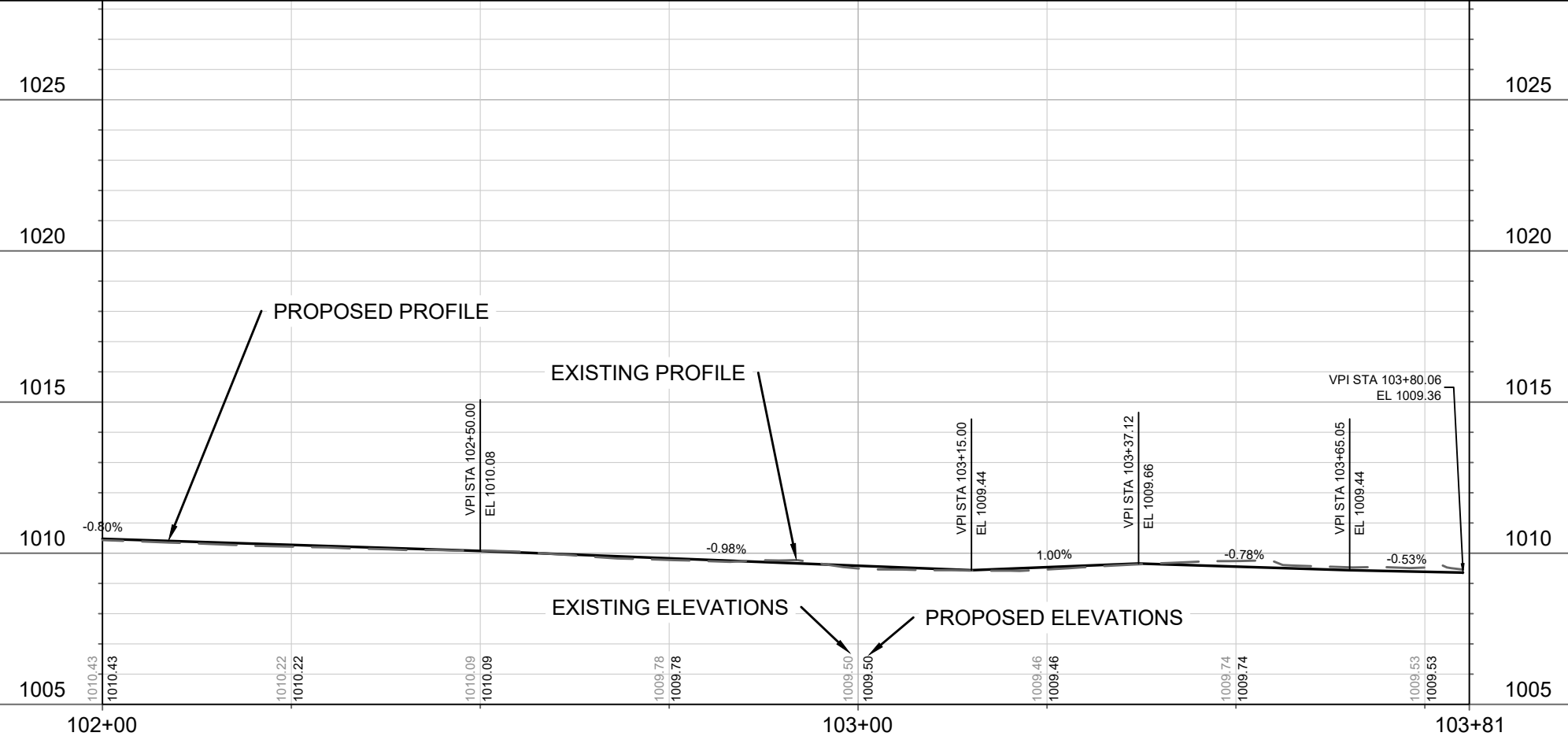
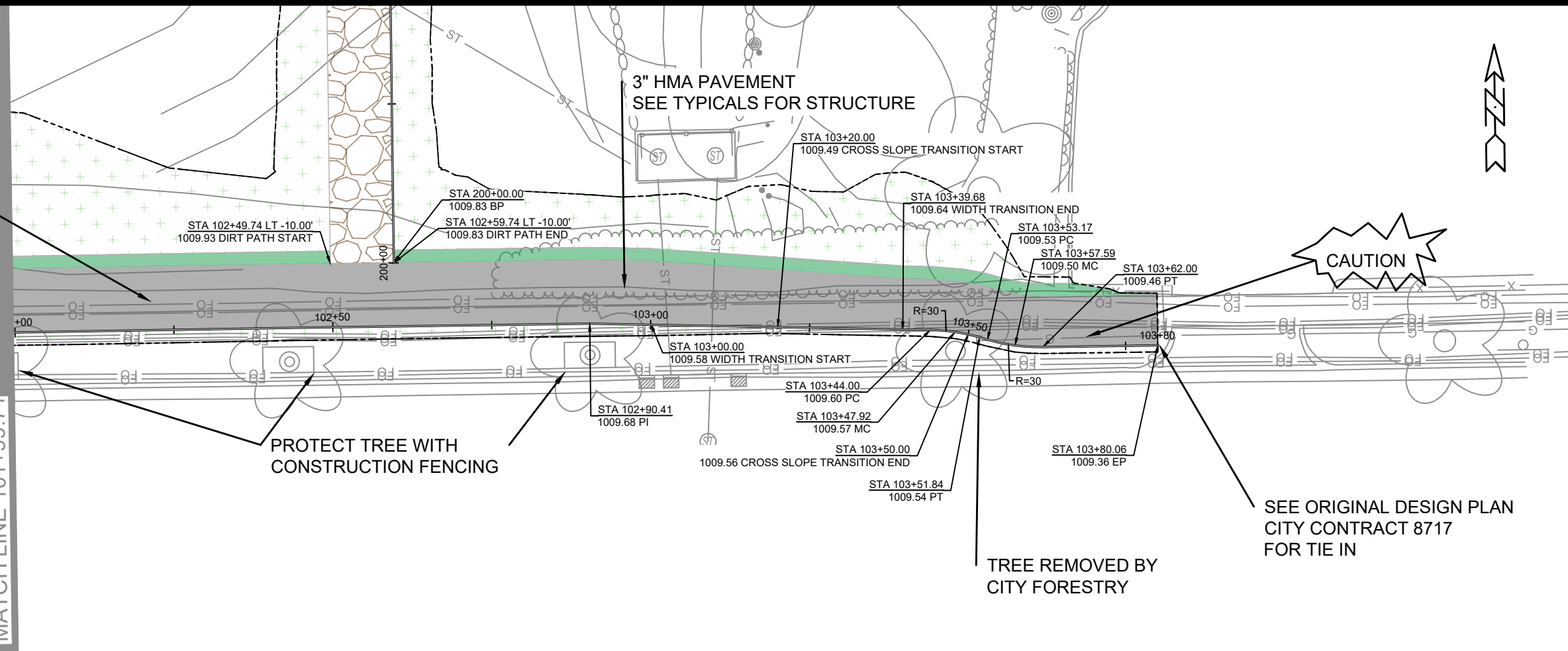
12777B
MADISON, WI
CONTRACT NO: 8717

WIDENED SIDEWALK PLAN AND PROFILE
NAUTILUS POINT PARK WIDENED SIDEWALK
M:\DESIGN\Projects\13925\CAD\Plan Sheets\Widened Sidewalk - (1).dwg

12777B
P-1

3" HMA PAVEMENT
SEE TYPICALS FOR STRUCTURE

MATCH LINE 101+99.71



DATE	BY
REVISION	
DESIGNED BY: JN	DATE: 8/7/2024 6:02 PM
MARK	Scale: 1" = 20'
12777B	P-2

12777B
MADISON, WI
CONTRACT NO: 8717

WIDENED SIDEWALK PLAN AND PROFILE
NAUTILUS POINT PARK WIDENED SIDEWALK
M:\DESIGN\Projects\13925\CAD\Plan Sheets\Widened Sidewalk - (1).dwg



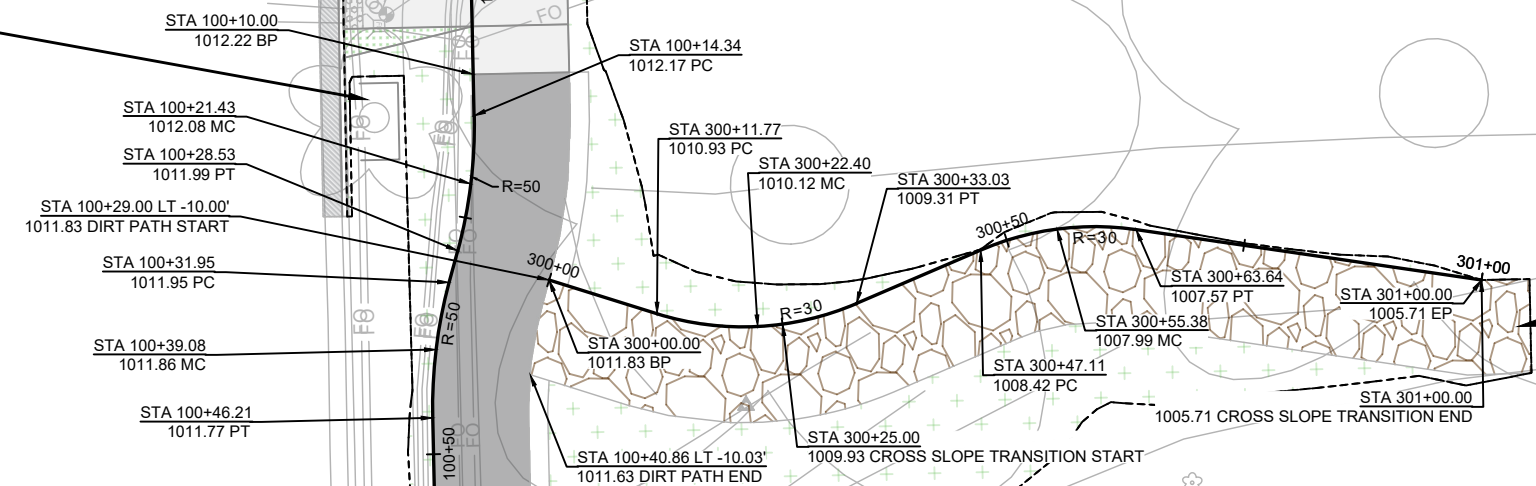
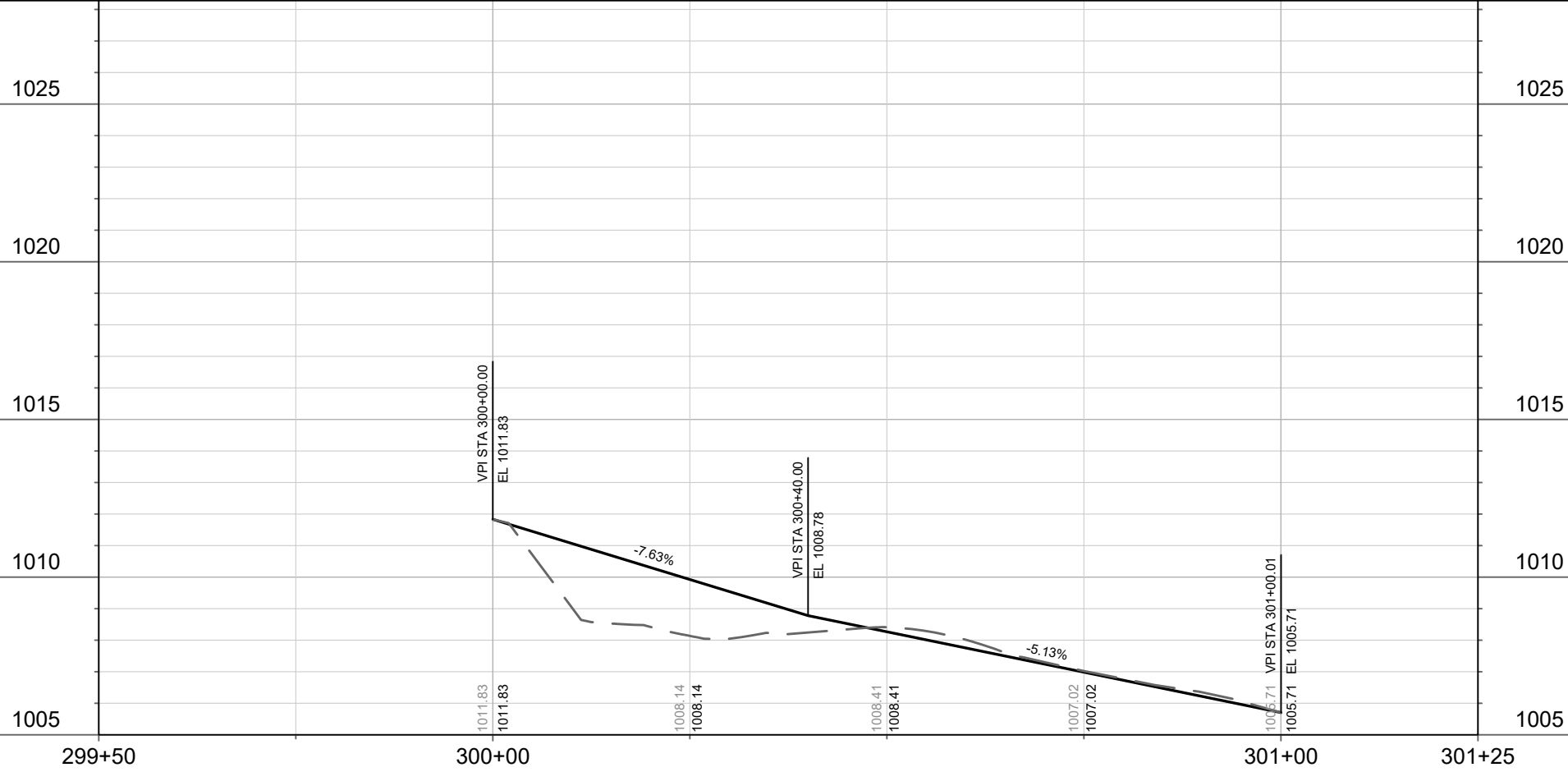
PROTECT TREE WITH
CONSTRUCTION FENCING

PROTECT TREE WITH
CONSTRUCTION FENCING

3" HMA PAVEMENT
SEE TYPICALS FOR STRUCTURE

CONCRETE SIDEWALK
SEE CURB RAMP DETAILS

ADDITIONAL GRADING
TO SMOOTH TIE IN



MARK	REVISION	DATE	BY
12777B <td>Design By: JN <td>Date: 8/7/2024 6:03 PM <td>Scale: 1" = 20'</td> </td></td>	Design By: JN <td>Date: 8/7/2024 6:03 PM <td>Scale: 1" = 20'</td> </td>	Date: 8/7/2024 6:03 PM <td>Scale: 1" = 20'</td>	Scale: 1" = 20'

12777B
MADISON, WI
CONTRACT NO: 8717

MAINTENANCE PATH WEST PLAN AND PROFILE
NAUTILUS POINT PARK WIDENED SIDEWALK
M:\DESIGN\Projects\13925\CAD\Plan Sheets\Maintenance Path West - (2).dwg



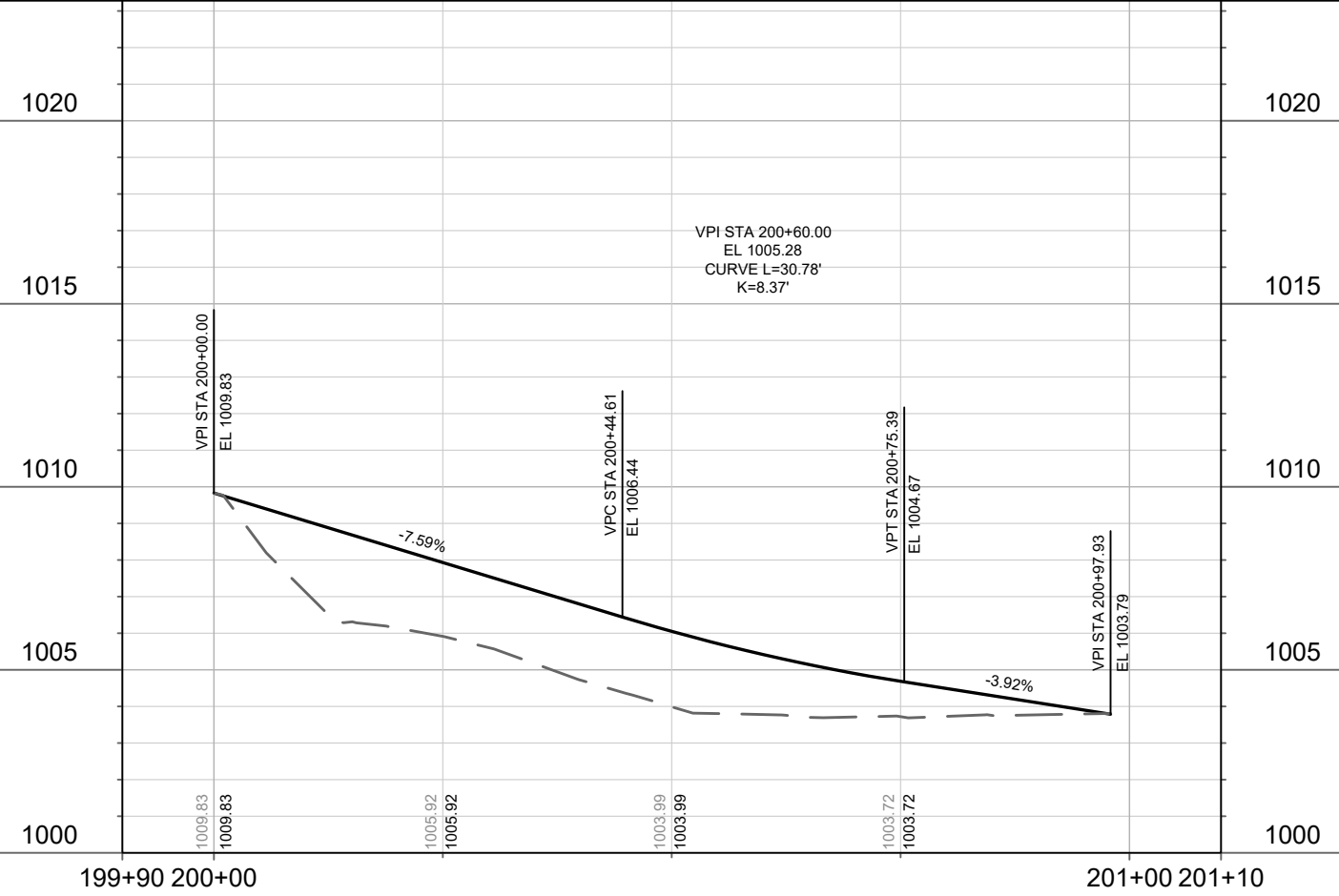
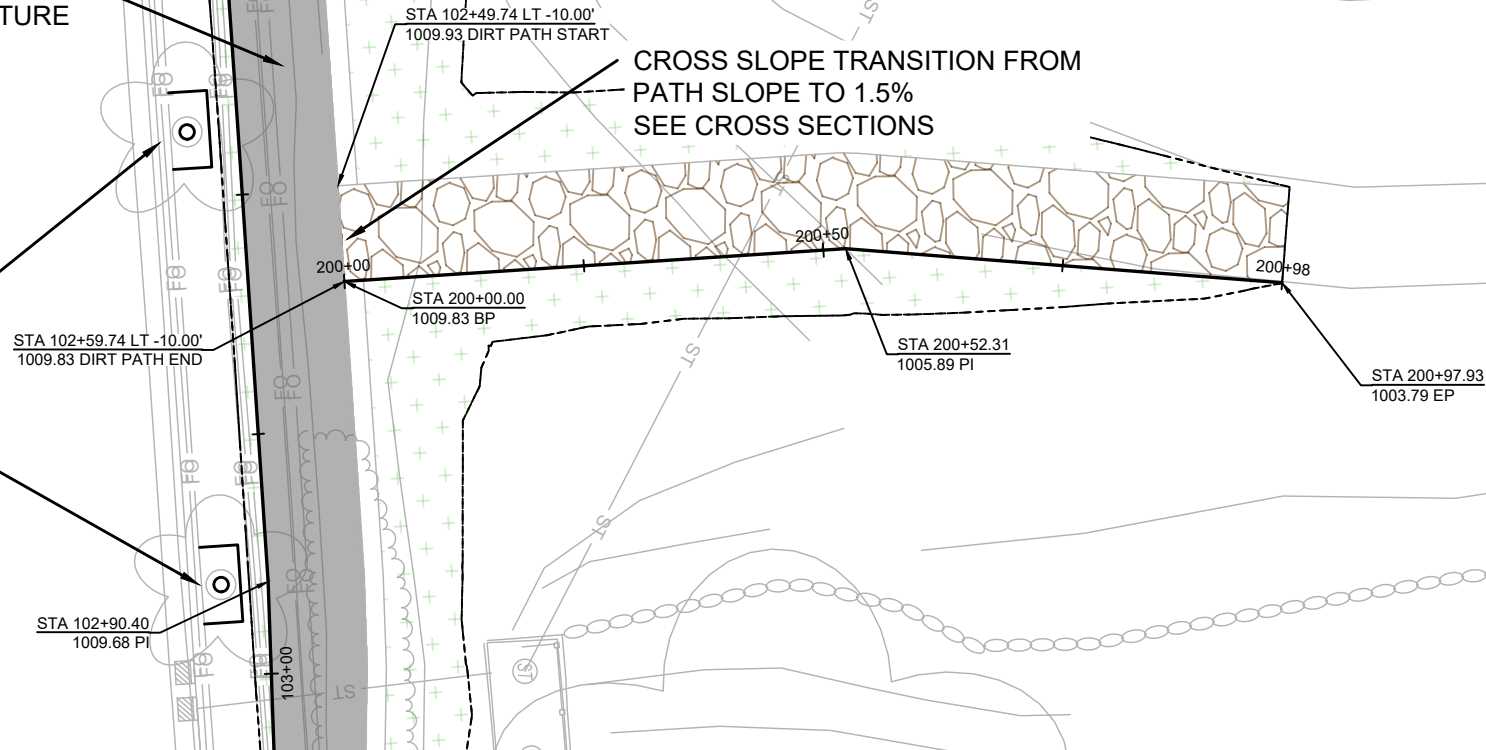
12777B
P-3



3" HMA PAVEMENT
SEE TYPICALS FOR STRUCTURE

PROTECT TREE WITH
CONSTRUCTION FENCING

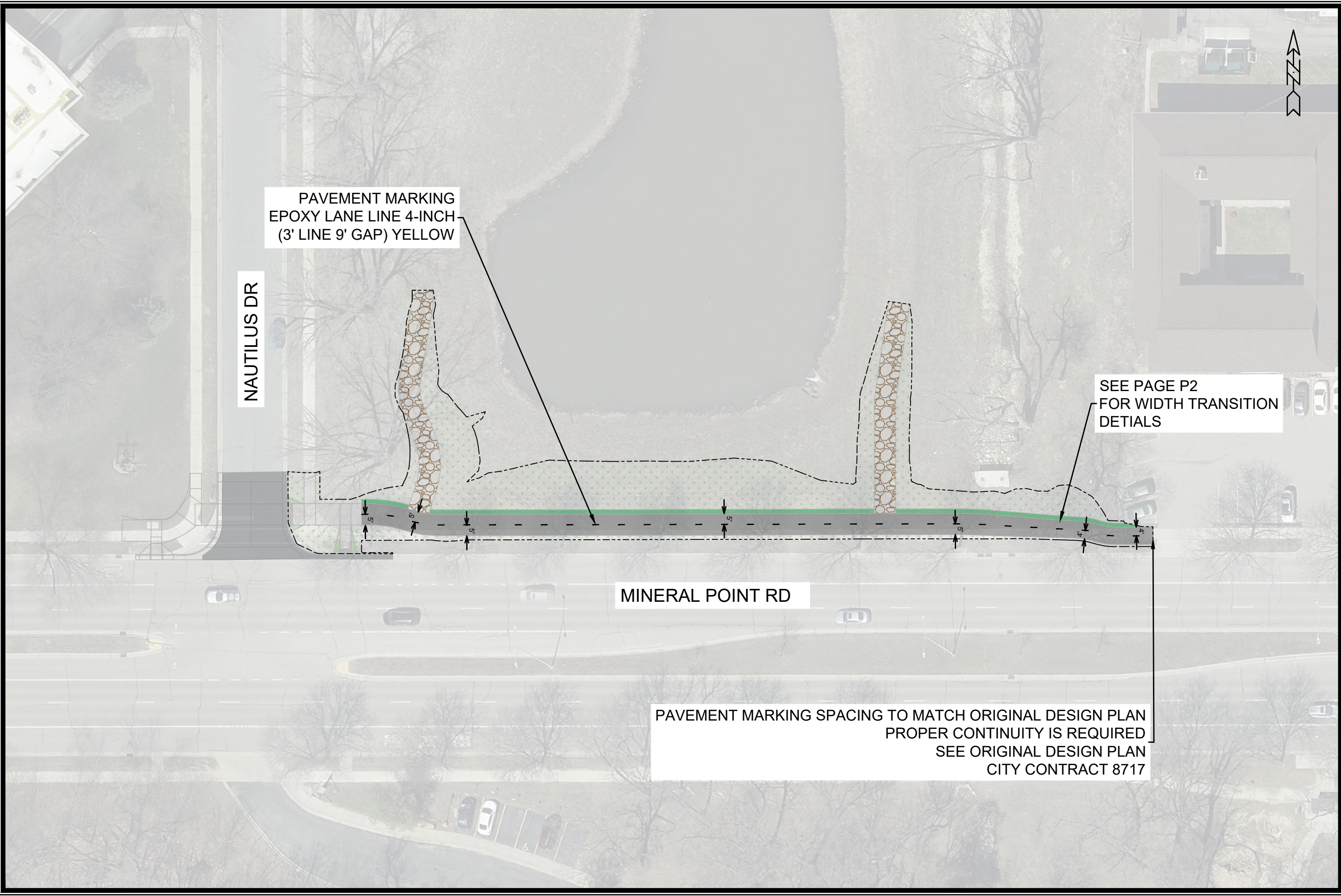
CROSS SLOPE TRANSITION FROM
PATH SLOPE TO 1.5%
SEE CROSS SECTIONS



MARK	REVISION	DATE	BY
12777B	12777B	07/2024	P-4

12777B
MADISON, WI
CONTRACT NO: 8717
M:\DESIGN\Projects\13925\CAD\Plan Sheets\Maintenance Path East - (2).dwg





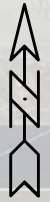
PAVEMENT MARKING
EPOXY LANE LINE 4-INCH
(3' LINE 9' GAP) YELLOW

NAUTILUS DR

MINERAL POINT RD

SEE PAGE P2
FOR WIDTH TRANSITION
DETAILS

PAVEMENT MARKING SPACING TO MATCH ORIGINAL DESIGN PLAN
PROPER CONTINUITY IS REQUIRED
SEE ORIGINAL DESIGN PLAN
CITY CONTRACT 8717

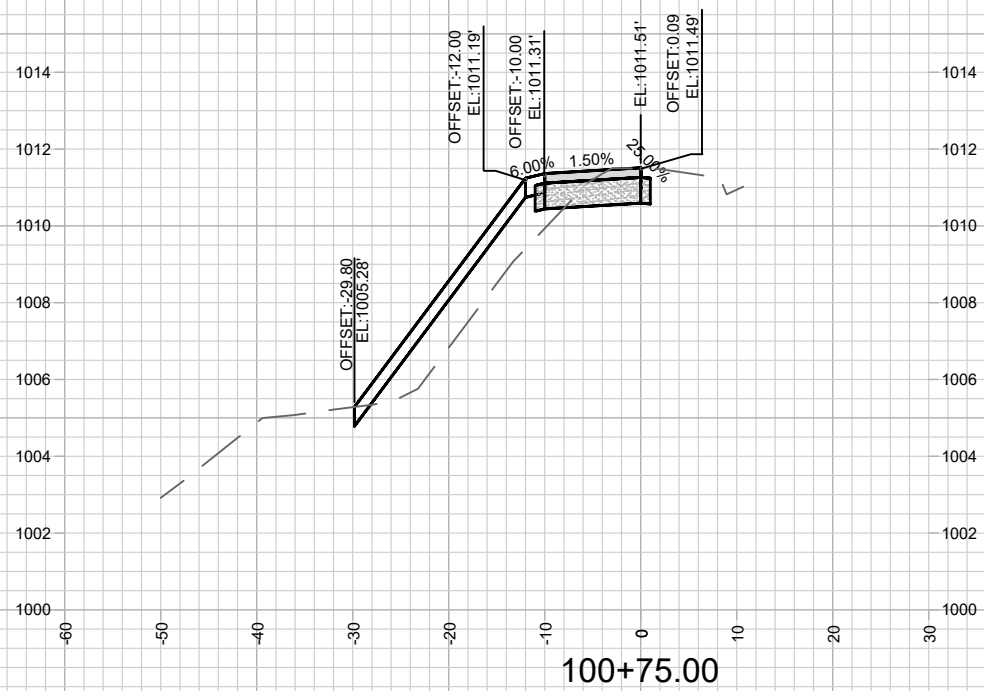
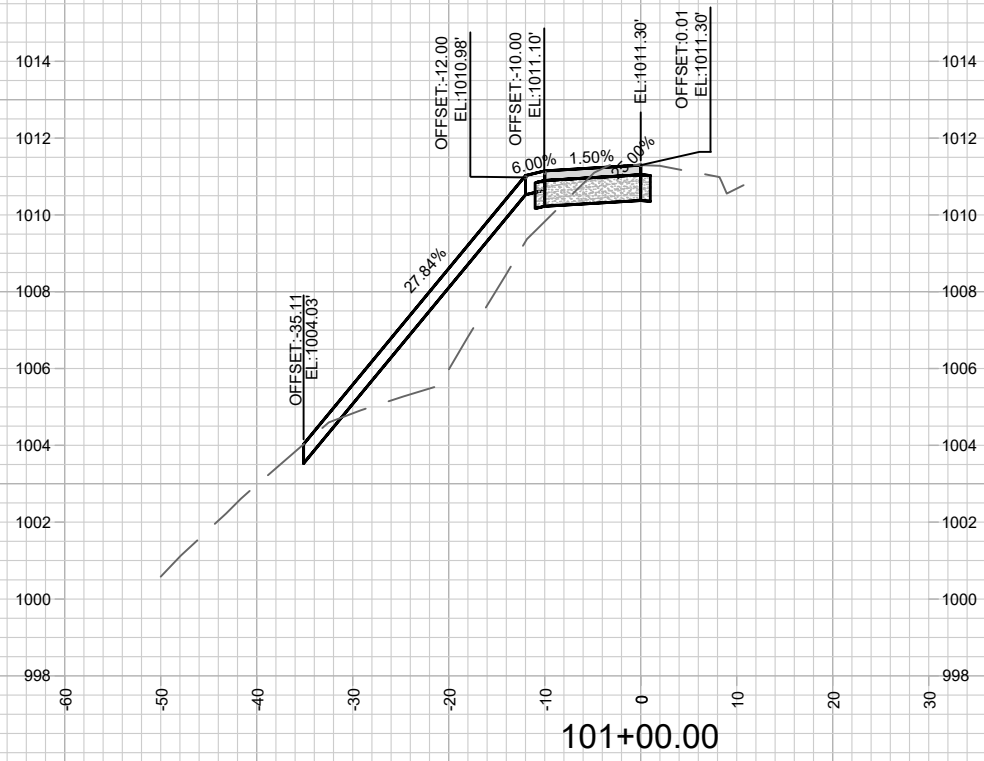
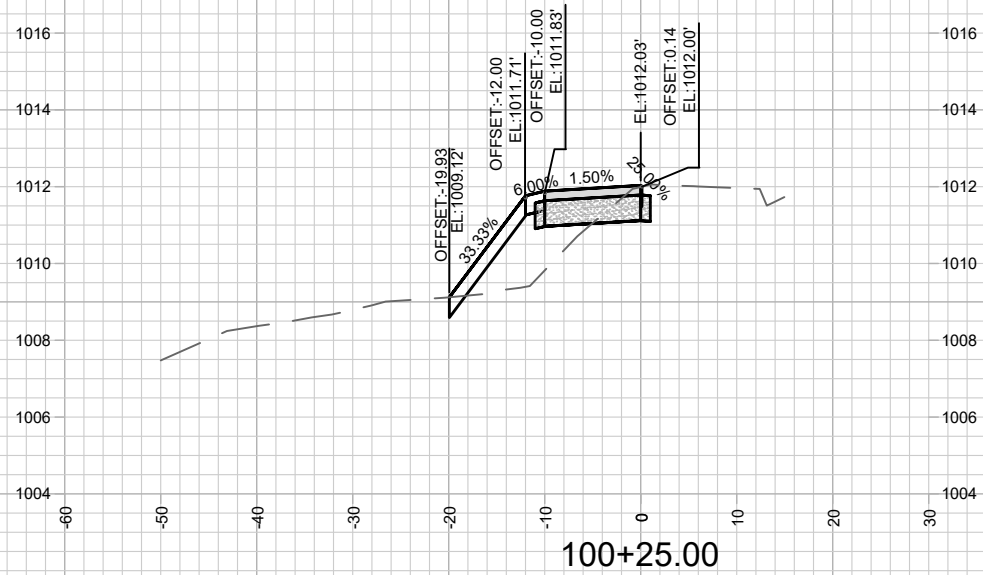


MARK	REVISION	DATE	BY
12777B <td>12777B <td>8/7/2024 6:06 PM <td>PM-1</td> </td></td>	12777B <td>8/7/2024 6:06 PM <td>PM-1</td> </td>	8/7/2024 6:06 PM <td>PM-1</td>	PM-1

12777B
MADISON, WI
CONTRACT NO: 8717
PAVEMENT MARKING
NAUTILUS POINT PARK WIDENED SIDEWALK
M:\DESIGN\Projects\13925\CAD\Traffic\13925EN-PAVEMENT MARKING.dwg



12777B
PM-1



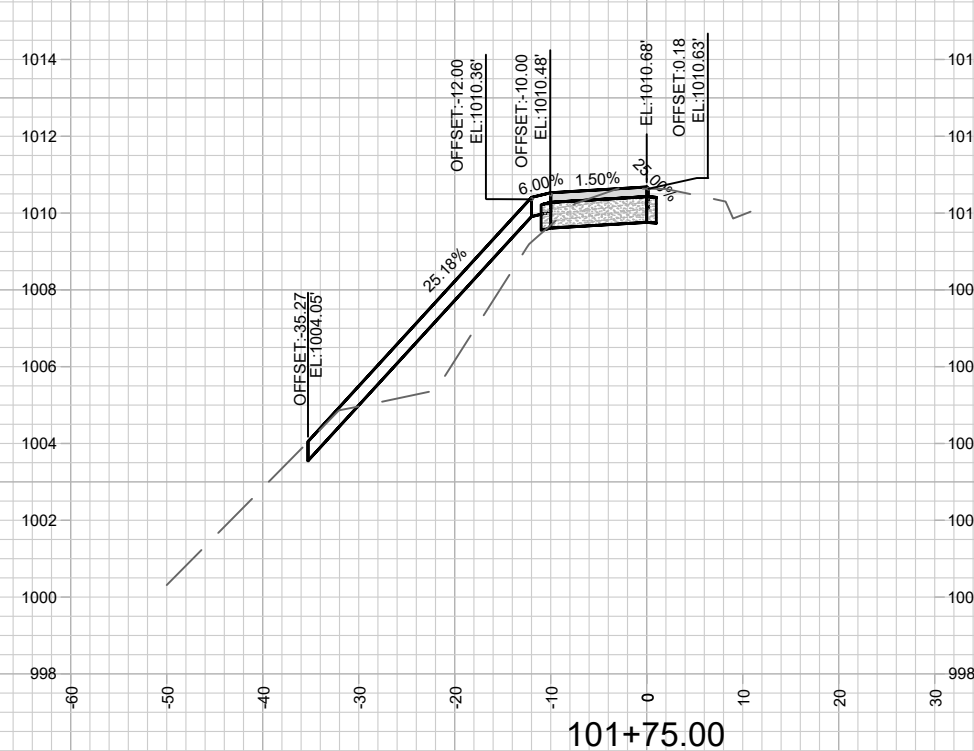
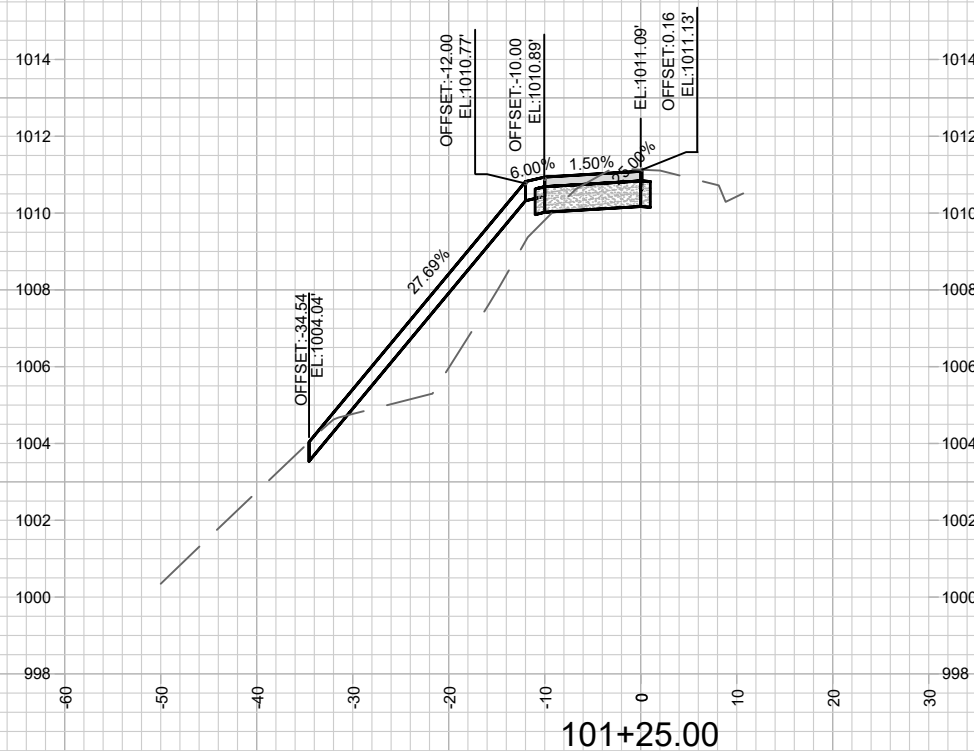
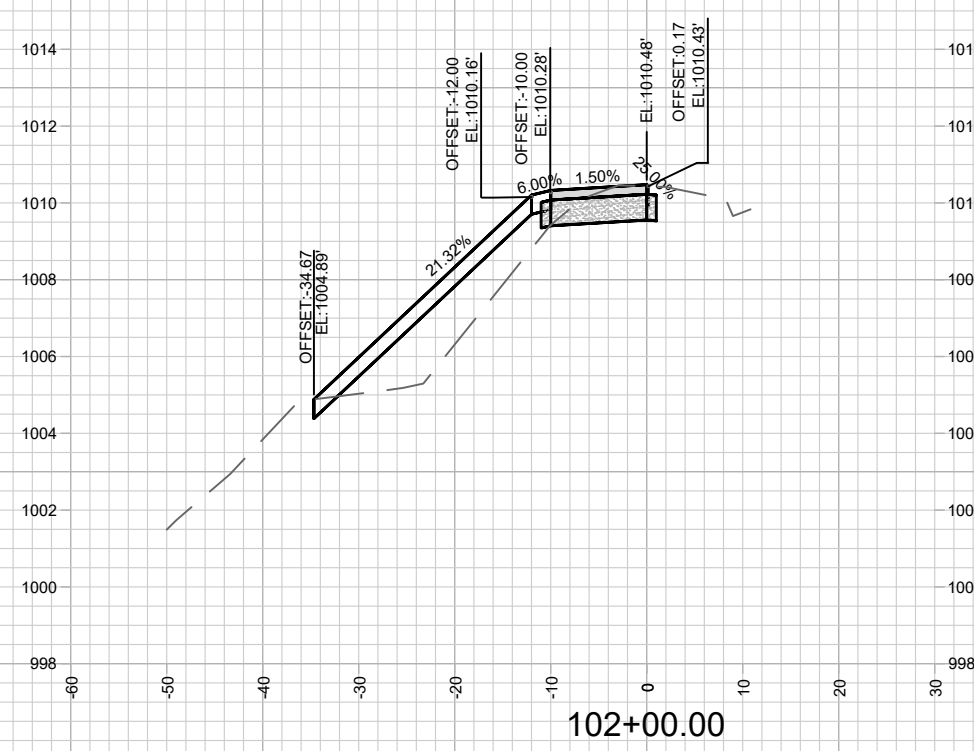
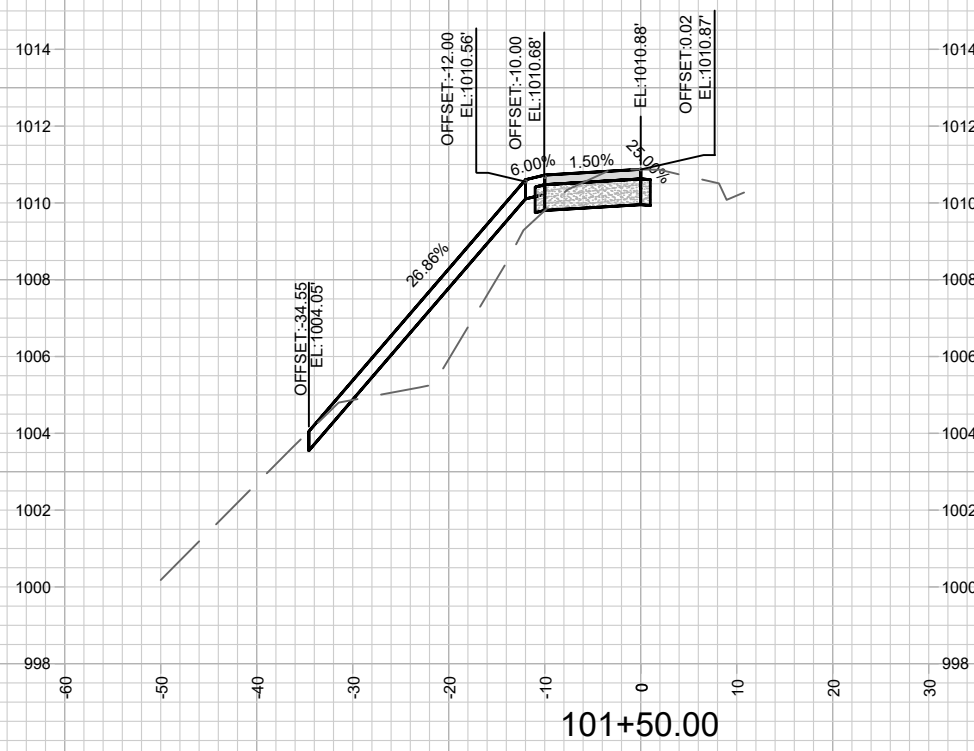
12777B
X-1

WIDENED SIDEWALK CROSS SECTIONS
NAUTILUS POINT PARK WIDENED SIDEWALK

12777B
MADISON, WI

CONTRACT NO: 8717


MARK	REVISION	DATE	BY
12777B <td>Designed By: JN <td>Date: 8/7/2024 6:06 PM <td>Scale: 1" = 20'</td> </td></td>	Designed By: JN <td>Date: 8/7/2024 6:06 PM <td>Scale: 1" = 20'</td> </td>	Date: 8/7/2024 6:06 PM <td>Scale: 1" = 20'</td>	Scale: 1" = 20'
			X-1



MARK	REVISION	DATE	BY

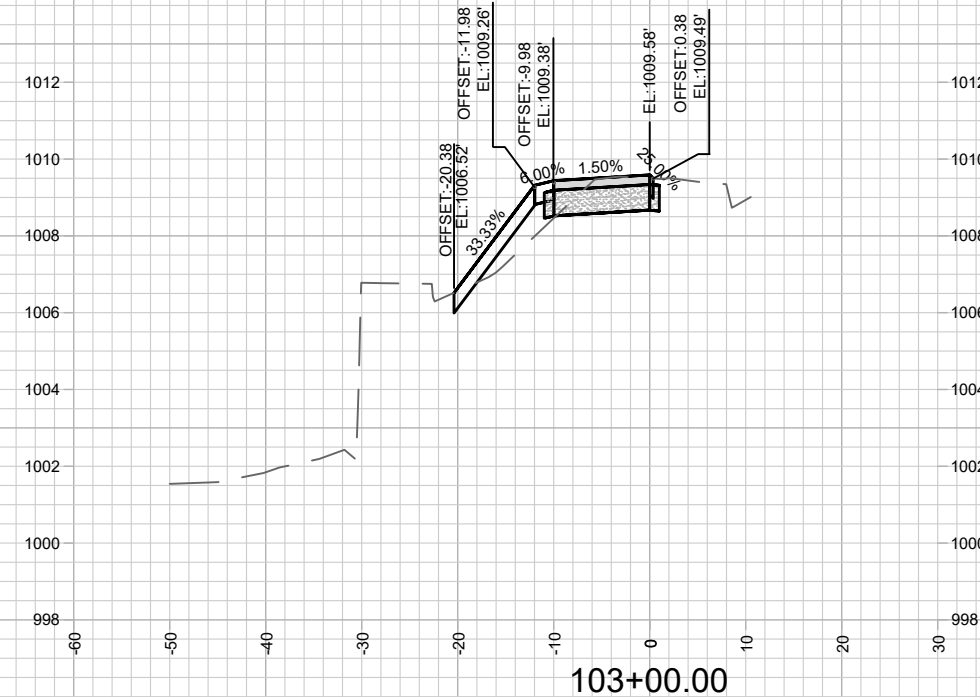
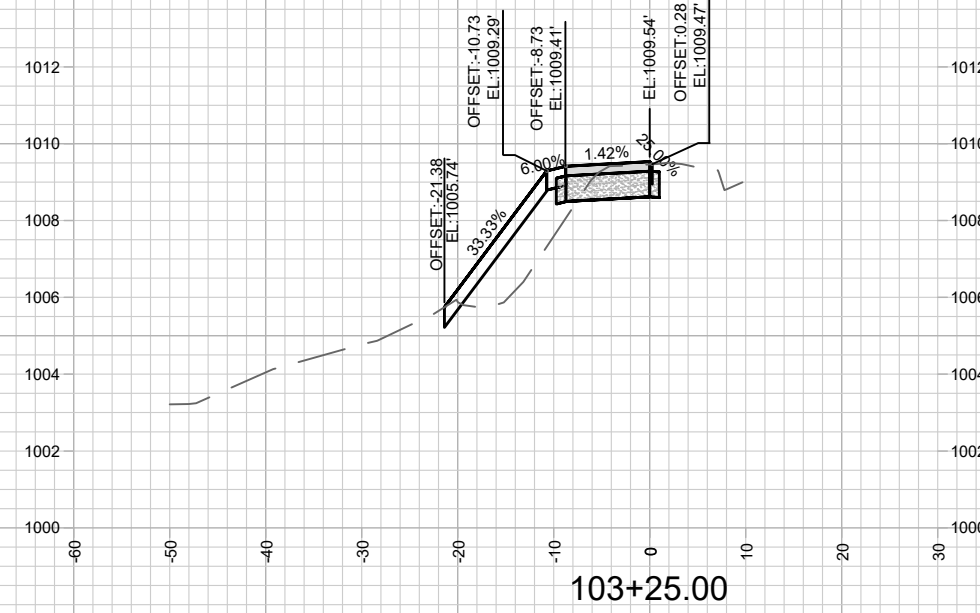
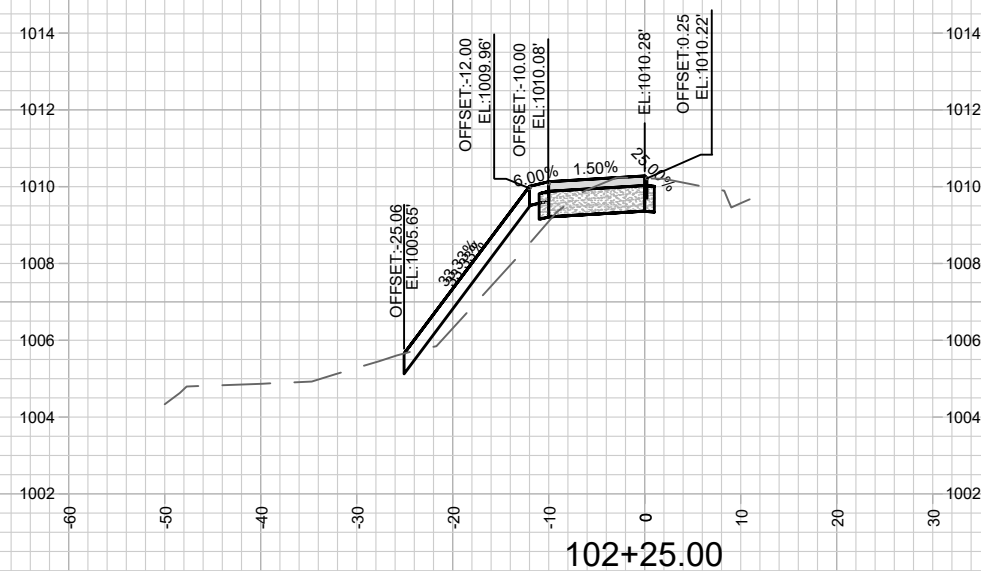
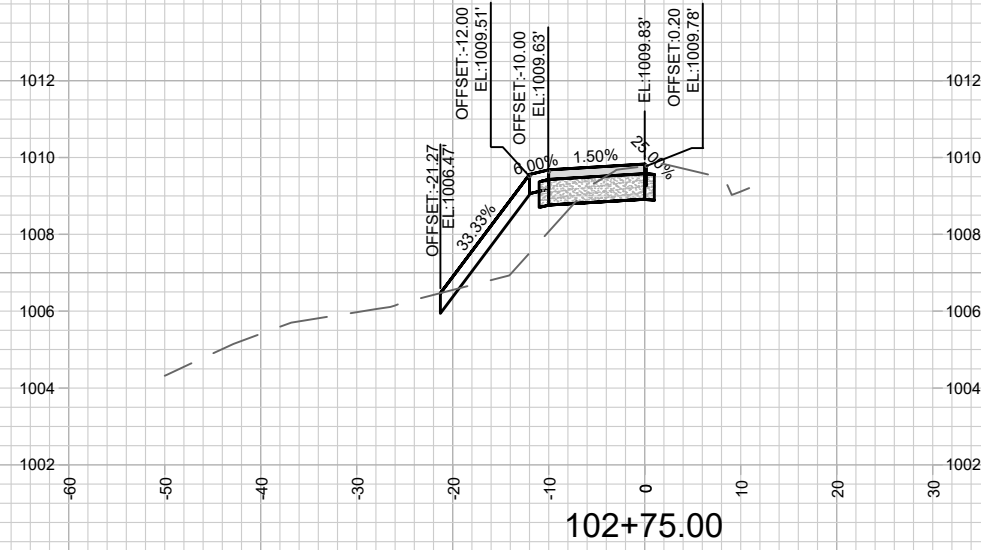
12777B
 MADISON, WI
 CONTRACT NO: 8717

WIDENED SIDEWALK CROSS SECTIONS
 NAUTILUS POINT PARK WIDENED SIDEWALK
 M:\DESIGN\Projects\13925\CAD\Streets\13925EN-Street.dwg



12777B
 X-2

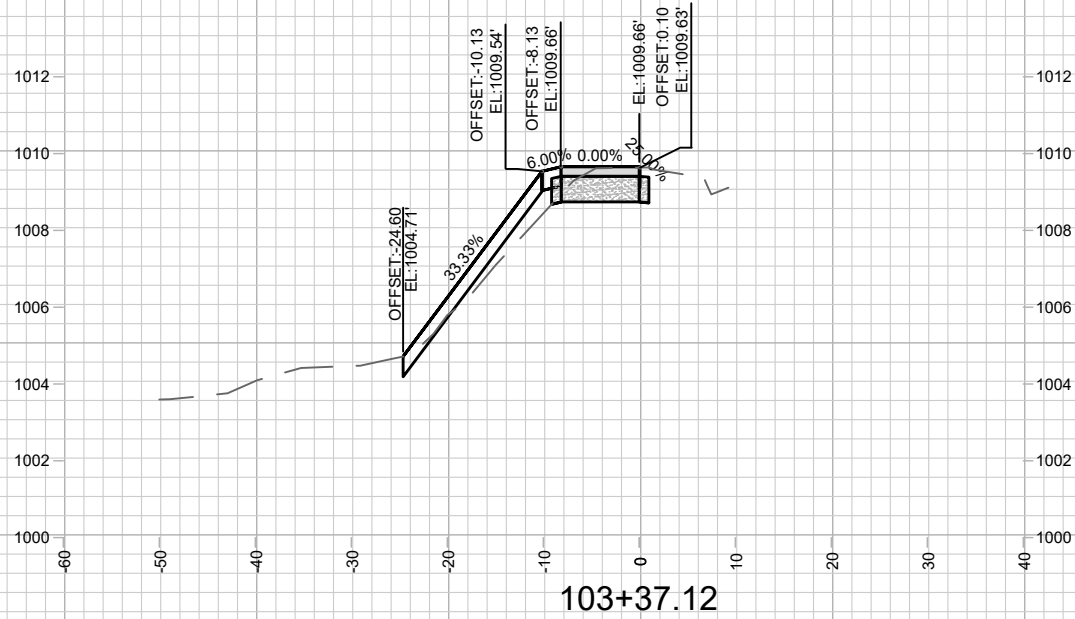
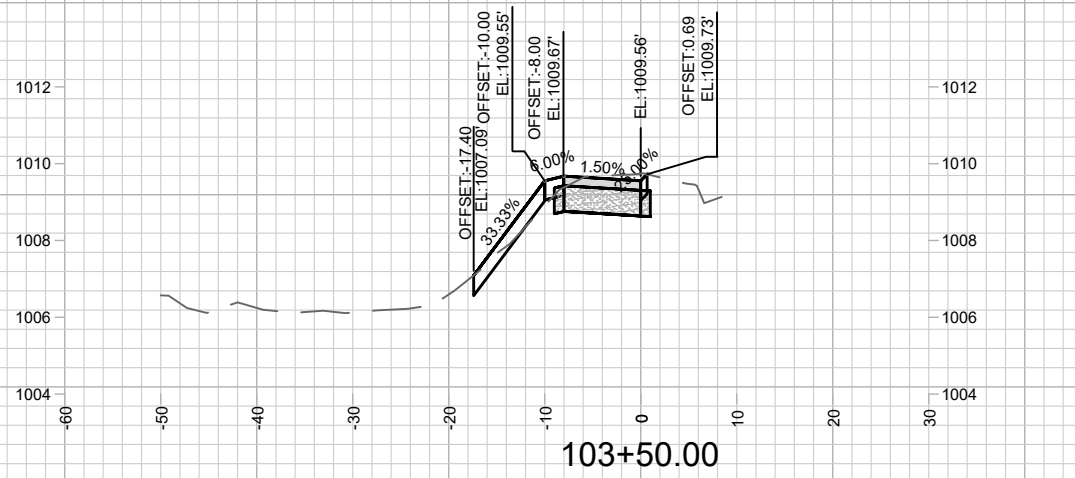
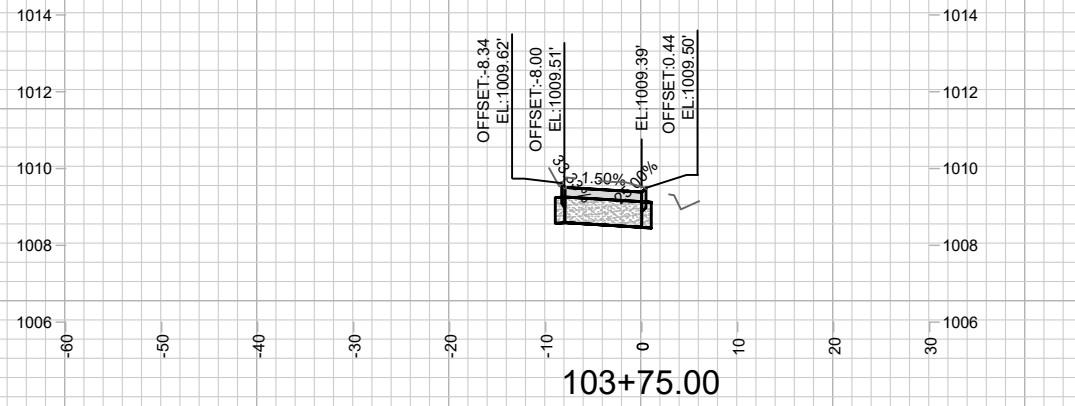
Designed By: JN
 Date: 8/7/2024 6:06 PM
 Scale: 1" = 20'
 X-2



MARK	REVISION	DATE	BY
12777B <td>8/7/2024 6:07 PM <td></td> <td></td> </td>	8/7/2024 6:07 PM <td></td> <td></td>		

12777B
 MADISON, WI
 CONTRACT NO: 8717
 WIDENED SIDEWALK CROSS SECTIONS
 NAUTILUS POINT PARK WIDENED SIDEWALK
 M:\DESIGN\Projects\13925\CAD\Streets\13925EN-Street.dwg

12777B
 X-3



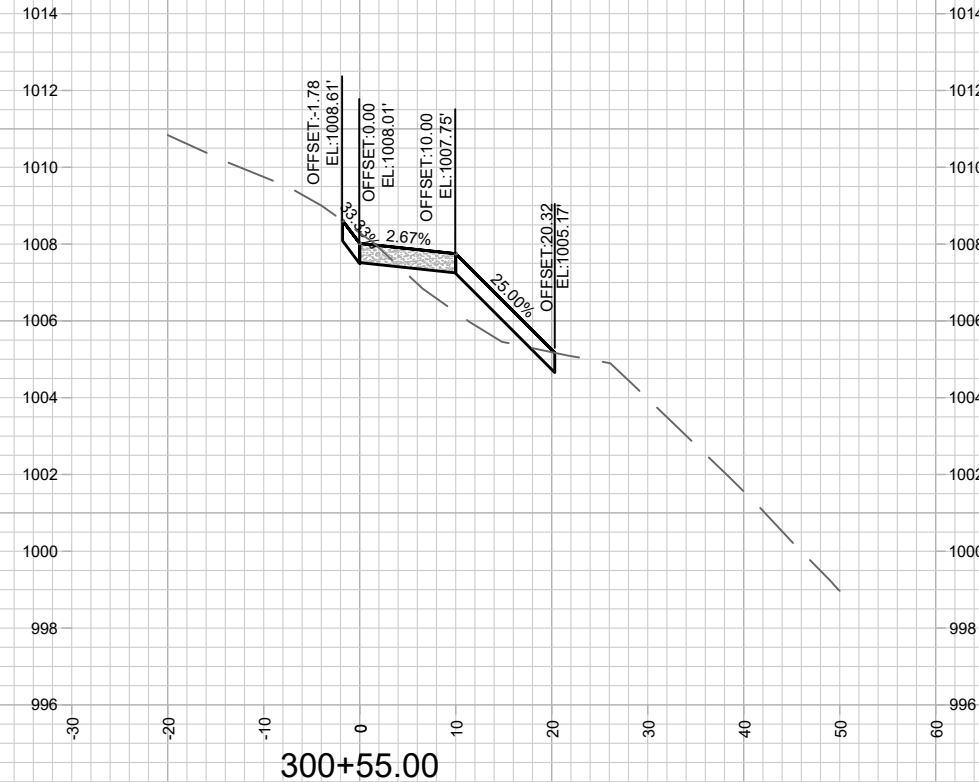
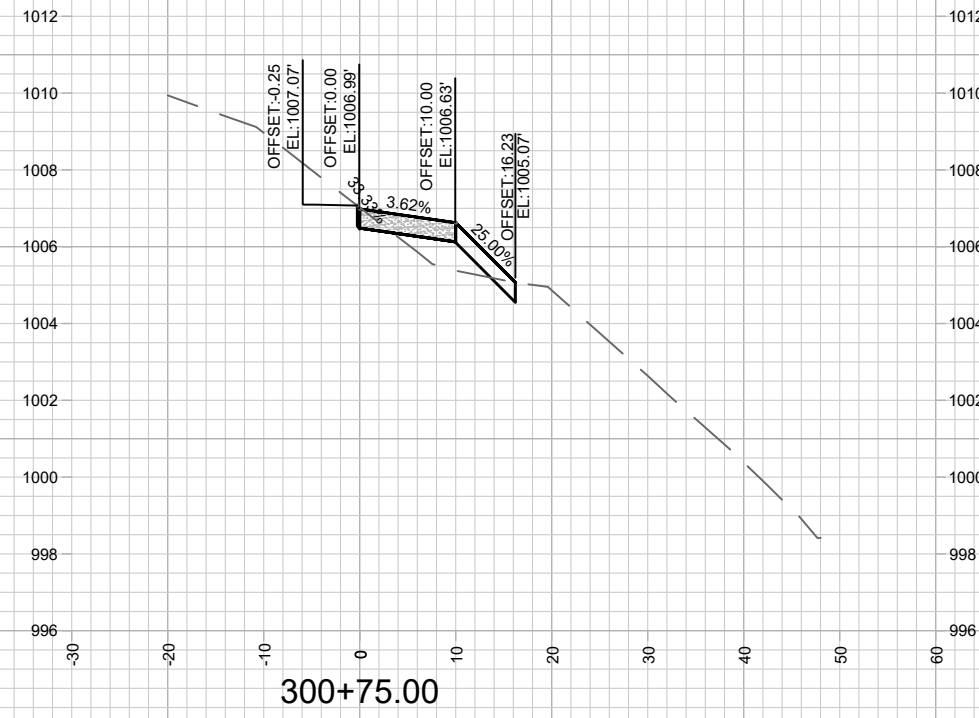
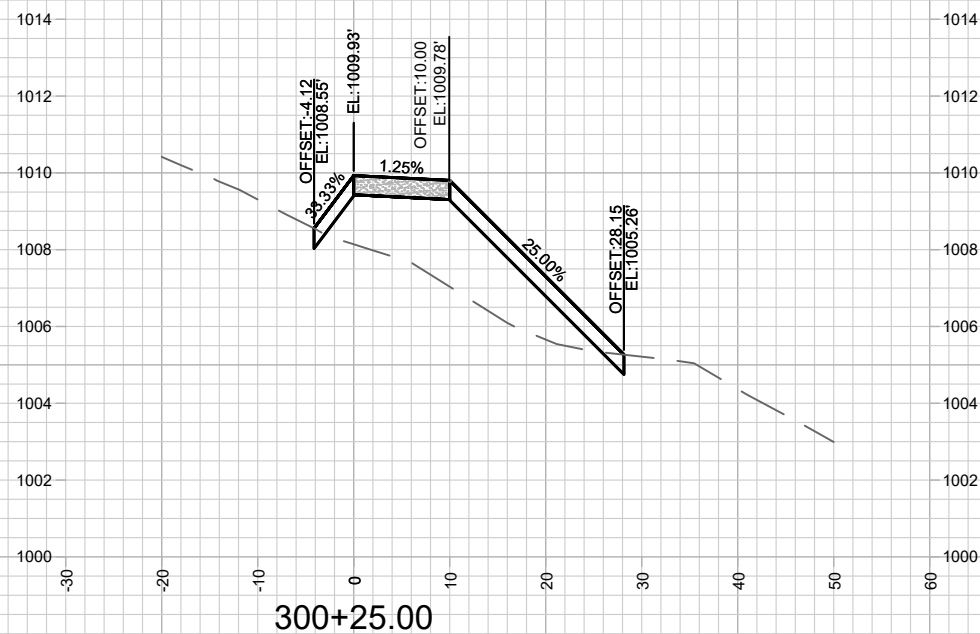
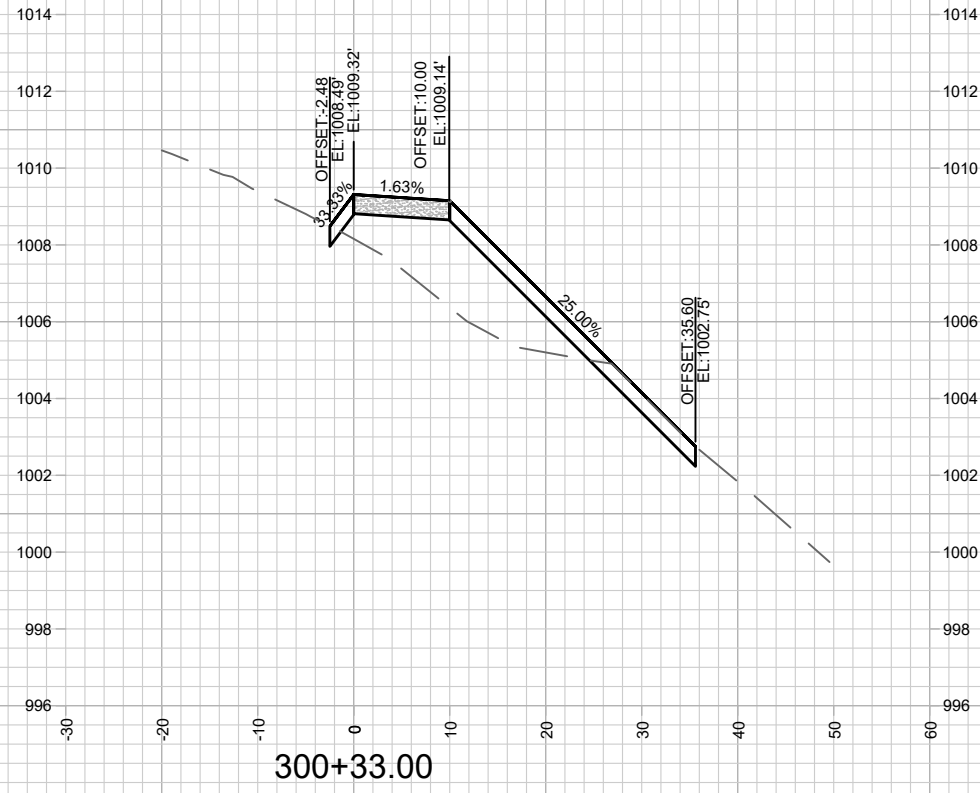
MARK	REVISION	DATE	BY
12777B	8/7/2024 6:07 PM		X-4

12777B
MADISON, WI
8717
CONTRACT NO:

WIDENED SIDEWALK CROSS SECTIONS
NAUTILUS POINT PARK WIDENED SIDEWALK
M:\DESIGN\Projects\13925\CAD\Streets\13925EN-Street.dwg



12777B
X-4



MARK	REVISION	DATE	BY

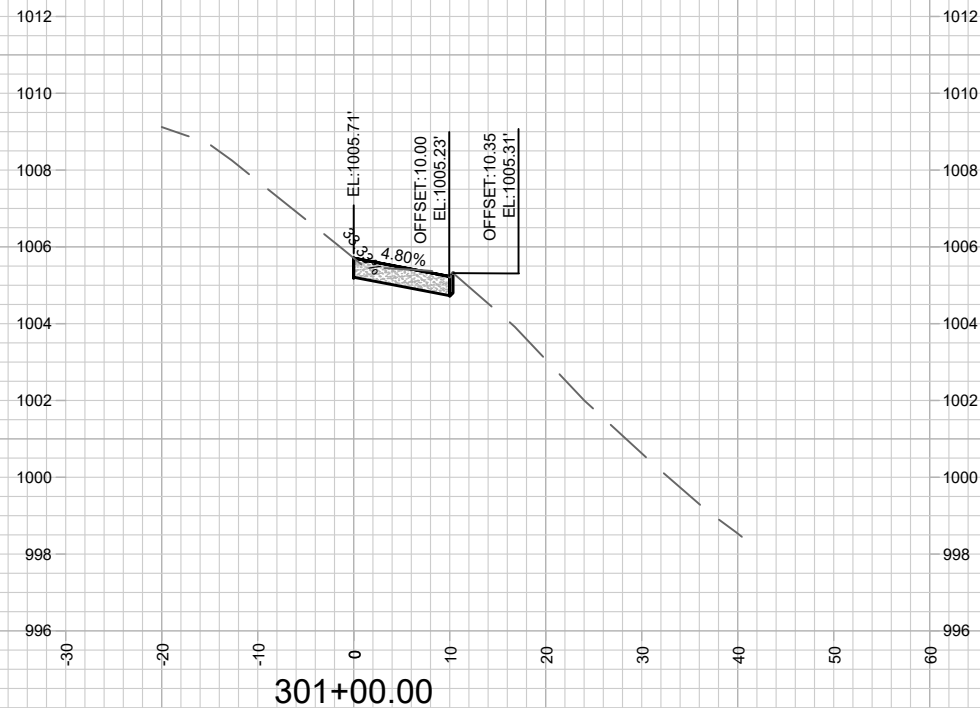
12777B
 MADISON, WI
 8717
 CONTRACT NO:

MAINTENANCE PATH WEST CROSS SECTIONS
 NAUTILUS POINT PARK WIDENED SIDEWALK
 M:\DESIGN\Projects\13925\CAD\Streets\13925EN-Street.dwg



12777B
 X-5

Designed By: JN
 12777B
 Date: 8/7/2024 6:07 PM
 Scale: 1" = 20'
 X-5



12777B
X-6

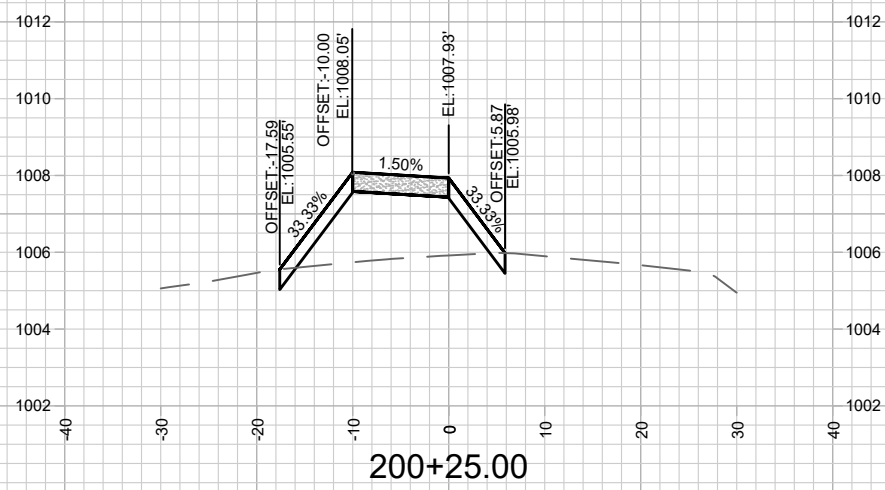
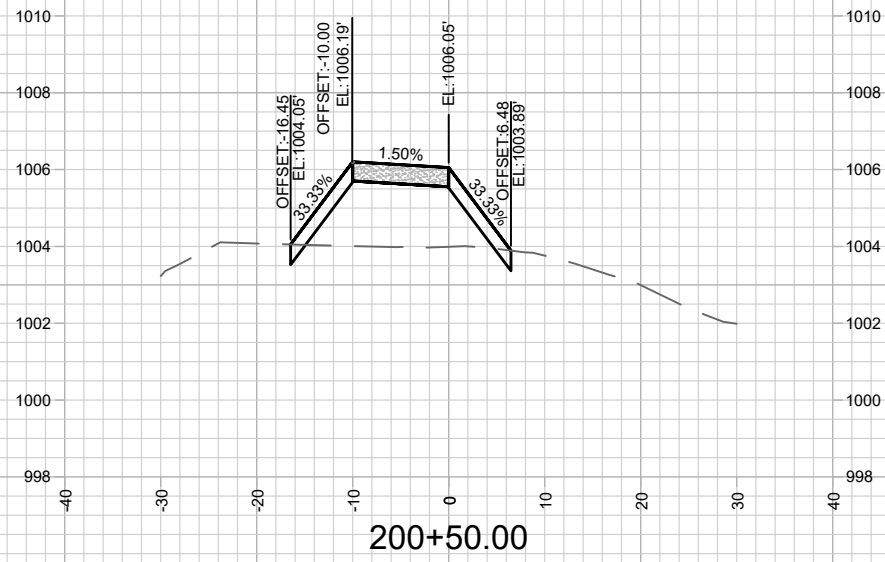
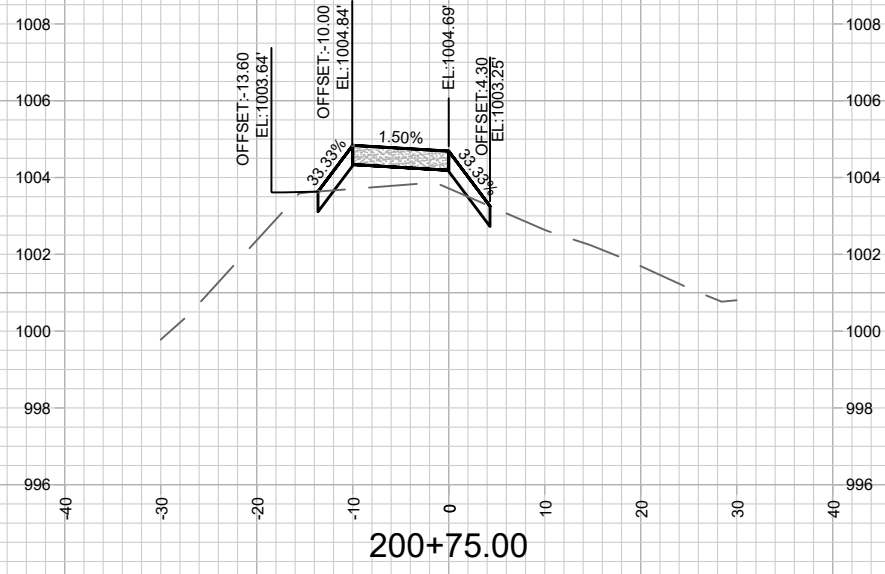
MAINTENANCE PATH WEST CROSS SECTIONS
NAUTILUS POINT PARK WIDENED SIDEWALK

M:\DESIGN\Projects\13925\CAD\Streets\13925EN-Street.dwg

12777B
MADISON, WI
8717

CONTRACT NO:

MARK	REVISION	DATE	BY
12777B <td>Designed By: JN <td>Date: 8/7/2024 6:07 PM <td>Scale: 1" = 20'</td> </td></td>	Designed By: JN <td>Date: 8/7/2024 6:07 PM <td>Scale: 1" = 20'</td> </td>	Date: 8/7/2024 6:07 PM <td>Scale: 1" = 20'</td>	Scale: 1" = 20'
			X-6



MARK	REVISION	DATE	BY
12777B <td>8/7/2024 6:07 PM <td></td> <td>X-7</td> </td>	8/7/2024 6:07 PM <td></td> <td>X-7</td>		X-7

12777B
MADISON, WI
8717

MAINTENANCE PATH EAST CROSS SECTIONS
NAUTILUS POINT PARK WIDENED SIDEWALK
M:\DESIGN\Projects\13925\CAD\Streets\13925EN-Street.dwg



12777B
X-7

SCC Code	SCC Description	Item Number	Description	Units	Quantity Total
40.01	Demolition, Clearing, Earthwork	204.0155	Removing Concrete Sidewalk	SY	166
40.01	Demolition, Clearing, Earthwork	205.0100	Excavation Common	CY	121
40.01	Demolition, Clearing, Earthwork	208.0100	Borrow	CY	308
40.06	Pedestrian / bike access and accommodation, landscaping	305.0120	Base Aggregate Dense 1 1/4-Inch	TON	176
40.06	Pedestrian / bike access and accommodation, landscaping	460.5223	HMA Pavement 3" 4 LT 58-28 S	TON	64
40.07	Automobile, bus, van accessways including roads, parking lots	601.0411	Concrete Curb & Gutter 30-Inch Type D	LF	81
40.06	Pedestrian / bike access and accommodation, landscaping	602.0410	Concrete Sidewalk 5-Inch	SF	130
40.06	Pedestrian / bike access and accommodation, landscaping	602.0420	Concrete Sidewalk 7-Inch	SF	0
40.06	Pedestrian / bike access and accommodation, landscaping	602.0515	Curb Ramp Detectable Warning Field Natural Patina	SF	0
40.08	Temporary Facilities and other indirect costs during construction	619.1000	Mobilization	EACH	1
40.06	Pedestrian / bike access and accommodation, landscaping	625.0500	Salvaged Topsoil	SY	1046
40.08	Temporary Facilities and other indirect costs during construction	628.1905	Mobilizations Erosion Control	EACH	1
40.08	Temporary Facilities and other indirect costs during construction	628.1910	Mobilizations Emergency Erosion Control	EACH	2
40.06	Pedestrian / bike access and accommodation, landscaping	628.6505	Soil Stabilizer Type A	ACRE	0.24
40.02	Site Utilities, Utility Relocation	628.7020	Inlet Protection Type D	EACH	4
40.08	Temporary Facilities and other indirect costs during construction	628.756	Tracking Pad	EACH	1
40.06	Pedestrian / bike access and accommodation, landscaping	629.0210	Fertilizer Type B	CWT	0.08
40.06	Pedestrian / bike access and accommodation, landscaping	630.0500	Seed Water	MGAL	10
40.08	Temporary Facilities and other indirect costs during construction	650.5500	Construction Staking Curb Gutter and Curb & Gutter	LF	81
40.06	Pedestrian / bike access and accommodation, landscaping	650.9000	Construction Staking Curb Ramps	EACH	30
40.06	Pedestrian / bike access and accommodation, landscaping	SPV.0060.501	Tree Protection	EACH	7
40.06	Pedestrian / bike access and accommodation, landscaping	SPV.0085.501	Seeding	LB	2.54
40.07	Automobile, bus, van accessways including roads, parking lots	SPV.0090.022	Remove, Salvage and Reinstall Fence	LF	17
40.06	Pedestrian / bike access and accommodation, landscaping	SPV.0090.114	Pavement Marking Epoxy Lane Line 4-Inch	LF	371
40.02	Site Utilities, Utility Relocation	SPV.0090.2008	Silt sock (8 Inch) -Complete	LF	773
40.06	Pedestrian / bike access and accommodation, landscaping	SPV.0180.2009	EROSION MATTING, CLASS I, TYPE A - ORGANIC	SY	1247
40.06	Pedestrian / bike access and accommodation, landscaping	SPV.0180.2010	Aggressive Native Seed Mix	SY	892

12777B
MISCELLANEOUS QUANTITIES
MADISON, WI
NAUTILUS POINT PARK WIDENED SIDEWALK
CONTRACT NO: 8717



12777B
MQ-1

MARK	DESIGNED BY: ###	DATE	BY
12777B	12777B	07/2024 6:07 PM	MQ-1

M:\DESIGN\Projects\13925\CAD\Streets\13925EN-Street.dwg