

Madison, Wisconsin

INDEX OF SHEETS

SHEET NO.	D1	STANDARD NOTES AND COMMENTS
SHEET NO.	D2	TYPICAL SECTIONS
SHEET NO.	P1	STREET PLAN & PROFILES
SHEET NO.	U1	UTILITIES SHEET
SHEET NO.	X1-X4	CROSS SECTIONS

NO MAINTENANCE PLAN

CITY OF MADISON

CITY ENGINEERING DIVISION

DEPARTMENT OF PUBLIC WORKS

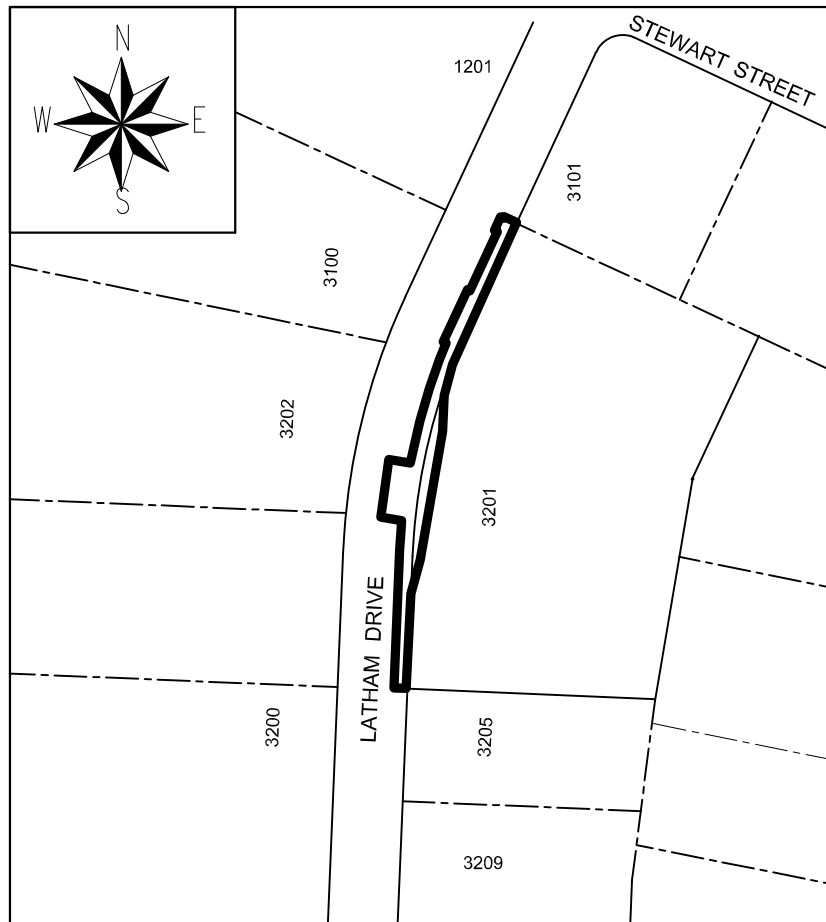
PLAN OF PROPOSED IMPROVEMENT

3201 LATHAM DRIVE

CITY PROJECT NO. 12917

CITY CONTRACT NO. 8545

PROJECT LOCATION



PUBLIC IMPROVEMENT PROJECT APPROVED

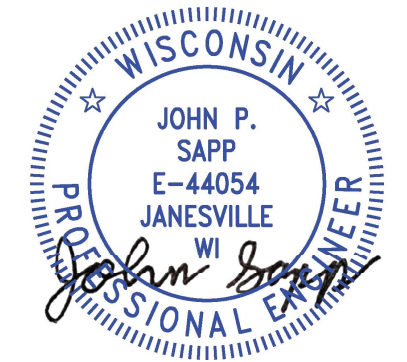
MARCH 3, 2020

BY THE COMMON COUNCIL OF MADISON, WISCONSIN

PUBLIC IMPROVEMENT DESIGN APPROVED BY:

Greg Fries Oct 21, 2020
 City Engineer Date

STREET DESIGNED BY:



Oct 21, 2020

PLOT SCALE:

PLOT NAME:

REV. DATE:

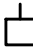
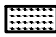

ORIGINATOR: CITY_OF_MADISON_STREETS_DIVISION

ALL PROPOSED STREET TREE REMOVALS WITHIN THE RIGHT OF WAY SHALL BE REVIEWED BY CITY FORESTRY BEFORE THE PLAN COMMISSION MEETING. STREET TREE REMOVALS REQUIRE APPROVAL AND A TREE REMOVAL PERMIT ISSUED BY CITY FORESTRY. ANY STREET TREE REMOVALS REQUESTED AFTER THE DEVELOPMENT PLAN IS APPROVED BY THE PLAN COMMISSION OR THE BOARD OF PUBLIC WORKS AND CITY FORESTRY WILL REQUIRE A MINIMUM OF A 72-HOUR REVIEW PERIOD WHICH SHALL INCLUDE THE NOTIFICATION OF THE ALDERPERSON WITHIN WHO'S DISTRICT IS AFFECTED BY THE STREET TREE REMOVAL(S) PRIOR TO A TREE REMOVAL PERMIT BEING ISSUED.

AS DEFINED BY THE SECTION 107.13 OF CITY OF MADISON STANDARD SPECIFICATIONS FOR PUBLIC WORKS CONSTRUCTION: NO EXCAVATION IS PERMITTED WITHIN 5 FEET OF THE TRUNK OF THE STREET TREE OR WHEN CUTTING ROOTS OVER 3 INCHES IN DIAMETER. IF EXCAVATION IS NECESSARY, THE CONTRACTOR SHALL CONTACT MADISON CITY FORESTRY (266-4816) PRIOR TO EXCAVATION. CITY OF MADISON FORESTRY PERSONNEL SHALL ASSESS THE IMPACT TO THE TREE AND TO ITS ROOT SYSTEM PRIOR TO WORK COMMENCING. TREE PROTECTION SPECIFICATIONS CAN BE FOUND ON THE FOLLOWING WEBSITE: [HTTPS://WWW.CITYOFMADISON.COM/BUSINESS/PW/SPECS.CFM](https://www.cityofmadison.com/business/pw/specs.cfm)

DEVELOPER MUST SUBMIT A TRAFFIC CONTROL PLAN TO CITY TRAFFIC ENGINEERING AT LEAST 14 DAYS PRIOR TO THE START OF WORK. WORK SHALL NOT PROCEED UNTIL AN APPROVED TRAFFIC CONTROL PLAN IS IN PLACE.

CONTACT PROJECT ENGINEER AND STREET DESIGNER IKO KAFOR AT IKOAFOR@CITYOFMADISON.COM FOR CAD AND ALIGNMENT DATA PRIOR TO STAKING.

CONVENTIONAL SIGNS	
FIELD VERIFY ALL UTILITY LOCATIONS	
GAS	—— G ——
STORM SEWER	—— ST ——
SANITARY SEWER	—— SAN ——
WATER	—— W ——
BURIED ELECTRIC	—— E ——
OVERHEAD ELECTRIC	—— OH ——
POWER POLE	
ADA COMPLIANT RAMP W/ DETECTABLE WARNING FIELD	
COMBUSTIBLE FLUIDS	

ALL PAVEMENT IN THE LATHAM DRIVE RIGHTS-OF-WAY SHALL BE TYPE A PAVEMENT PER STANDARD DETAIL DRAWING 4.02.

UNDERDRAINS SHALL BE INSTALLED PER STANDARD DETAIL DRAWING 4.05 FOR 75' ON EACH SIDE OF THE LOW POINT, OR TO THE NEAREST CURB HIGH POINT. ALL UNDERDRAIN SHALL BE WRAPPED.

ALL GUTTERS SHALL DRAIN WITH A MINIMUM GRADE OF 0.5% TOWARD STORM SEWER INLETS.

ALL DITCHES SHALL DRAIN WITH A MINIMUM GRADE OF 0.5%

THE CROSS SLOPE OF SIDEWALKS AND BARRIER FREE SIDEWALK CURB RAMPS SHALL TYPICALLY BE 1.5%. THE LONGITUDINAL GRADE OF BARRIER FREE SIDEWALK CURB RAMPS SHALL NOT EXCEED 8.33%. ALL SIDEWALK RAMPS SHALL BE CONSTRUCTED ACCORDING TO S.D.D. 3.04. AT ALL OTHER LOCATIONS THE LONGITUDINAL GRADE OF SIDEWALKS SHALL NOT BE LESS THAN 0.5% AND SHALL DRAIN TOWARD STORM SEWER INLETS. ALL SIDEWALK AND SIDEWALK RAMP ELEVATIONS AND GRADES SHALL BE FIELD VERIFIED AND SET TO COMPLY WITH THE CITY OF MADISON STANDARD SPECIFICATIONS AND THE A.D.A. GUIDELINES.

CURB STATION AND OFFSETS SHALL BE TO THE EDGE OF PAVEMENT UNLESS OTHERWISE INDICATED. CURB ELEVATIONS SHALL BE TO THE EDGE OF PAVEMENT UNLESS OTHERWISE INDICATED.

POWER POLES AND OTHER OBSTRUCTIONS SHALL BE MOVED TO PROVIDE 2 FEET MINIMUM OF CLEAR DISTANCE FROM ANY FACE OF CURB OR EDGE OF SIDEWALK.

ANY INFORMATION SHOWN ON THIS PLAN, WHICH IS NOT PART OF THIS RIGHT-OF-WAY PROJECT, IS PRELIMINARY AND NOT FOR CONSTRUCTION.


THERE MAY BE EXISTING UTILITIES OR OTHER FEATURES WHICH ARE EITHER NOT SHOWN OR SHOWN INCORRECTLY ON THIS PLAN. IT IS THE RESPONSIBILITY OF THE DEVELOPER TO LOCATE AND IDENTIFY ALL UTILITIES AND TOPOGRAPHY WHICH MAY AFFECT THE CONSTRUCTION OF THESE IMPROVEMENTS.

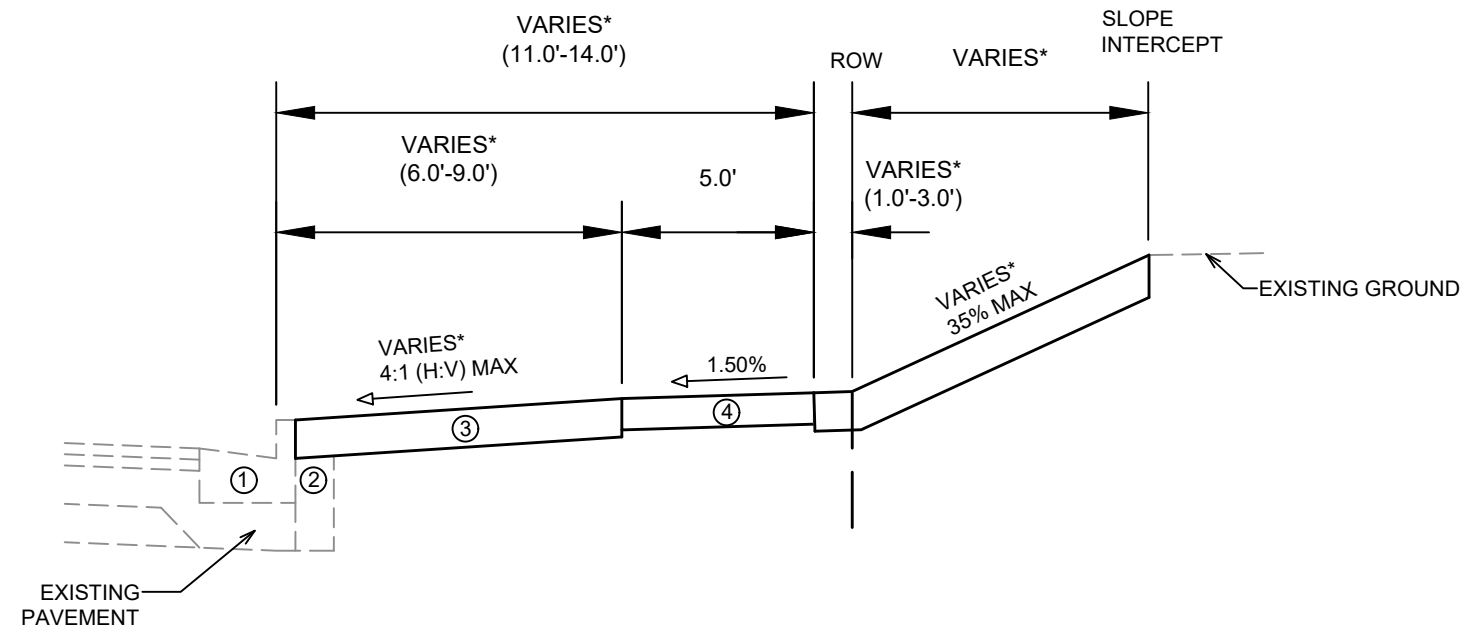
ALL PERMANENT SIGNING AND POSTING WILL BE DETERMINED AND PROVIDED BY THE TRAFFIC ENGINEERING DIVISION, FOLLOWING CONSTRUCTION OF THESE IMPROVEMENTS.

THE DEVELOPER SHALL PROVIDE, INSTALL AND MAINTAIN ALL STREET END BARRICADES, SIGNING AND TRAFFIC CONTROL, AS REQUIRED BY THE CITY TRAFFIC ENGINEER.

PAVEMENT SAWCUTS SHALL BE AS DIRECTED BY THE CITY CONSTRUCTION ENGINEER. SAWCUTS SHOWN ON THE PLAN ARE APPROXIMATE.

ALL WORK IN THE RIGHT OF WAY AND PUBLIC EASEMENTS SHALL BE IN ACCORDANCE WITH THE CITY OF MADISON STANDARD SPECIFICATIONS FOR PUBLIC WORKS CONSTRUCTION

12917	MADISON, WI	8545
STANDARD NOTES AND COMMENTS		
3201 LATHAM DRIVE		
M:\DESIGN\Projects\12917\CAD\Streets\12917EN_GenNote&TypSection.dwg		
		
12917		
D-1		



**TYPICAL SECTION
LATHAM DRIVE SIDEWALK
(STA 58+11 TO 62+23)**

NOTES:

- * SEE X-SHEETS FOR CROSS SLOPES AND GRADES.
- ① CONCRETE CURB AND GUTTER TYPE 'A' OR TYPE 'X', SEE P-SHEETS FOR LOCATIONS
- ② FILL INCIDENTAL TO CURB AND GUTTER INSTALLATION
- ③ RESTORE DISTURBED AREAS W/ 6" TOPSOIL, SEED AND MATTING
- ④ 5" CONCRETE SIDEWALK, REMOVE AND REPLACE AS SHOWN ON THE PLAN OR AS DIRECTED BY THE ENGINEER

MARK	REVISION	DATE	BY
12917		10/13/2020 12:21 PM	Scale: #####
Designed By: IO			D-2

12917
MADISON, WI
8545
CONTRACT NO:

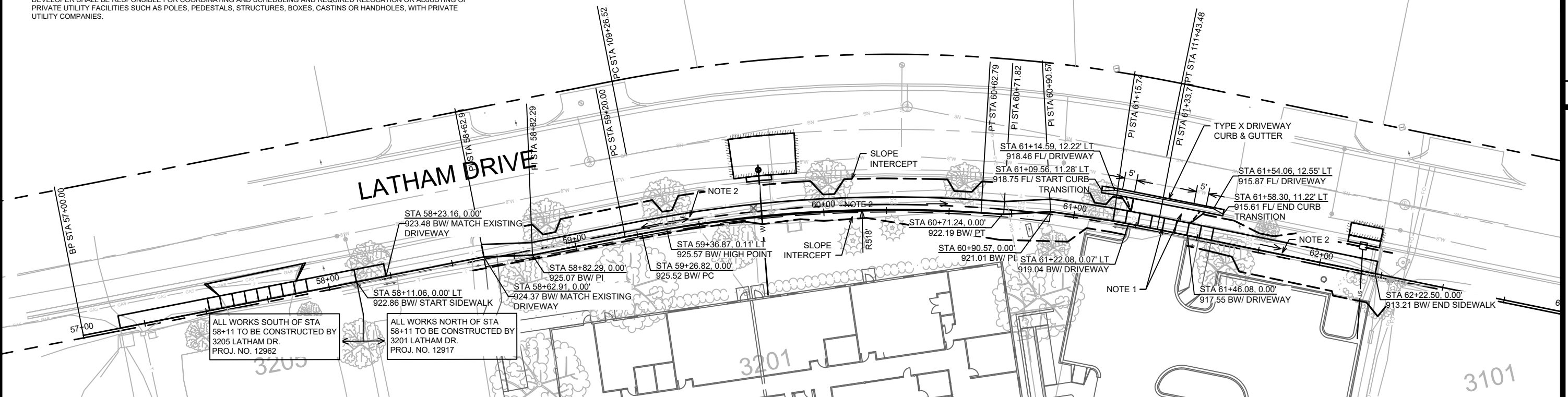
TYPICAL SECTIONS
3201 LATHAM DRIVE
M:\DESIGN\Projects\12917\CAD\Streets\12917EN_GenNotes&TypSection.dwg

CONTRACTOR SHALL TAKE PRECAUTIONS DURING CONSTRUCTION TO NOT DISFIGURE, SCAR, OR IMPAIR THE HEALTH OF ANY STREET TREE. CONTRACTOR SHALL OPERATE EQUIPMENT IN A MANNER AS TO NOT DAMAGE THE BRANCHES OF THE STREET TREE(S). THIS MAY REQUIRE USING SMALLER EQUIPMENT AND LOADING AND UNLOADING MATERIALS IN A DESIGNATED SPACE AWAY FROM TREES ON THE CONSTRUCTION SITE. ANY DAMAGE OR INJURY TO EXISTING STREET TREES (EITHER ABOVE OR BELOW GROUND) SHALL BE REPORTED IMMEDIATELY TO CITY FORESTRY AT 608-266-4816. PENALTIES AND REMEDIATION SHALL BE REQUIRED.

SECTION 107.13(G) OF CITY OF MADISON STANDARD SPECIFICATIONS FOR PUBLIC WORKS CONSTRUCTION ADDRESSES SOIL COMPACTION NEAR STREET TREES AND SHALL BE FOLLOWED BY CONTRACTOR. THE STORAGE OF PARKED VEHICLES, CONSTRUCTION EQUIPMENT, BUILDING MATERIALS, REFUSE, EXCAVATED SPOILS OR DUMPING OF POISONOUS MATERIALS ON OR AROUND TREES AND ROOTS WITHIN FIVE (5) FEET OF THE TREE OR WITHIN THE PROTECTION ZONE IS PROHIBITED.

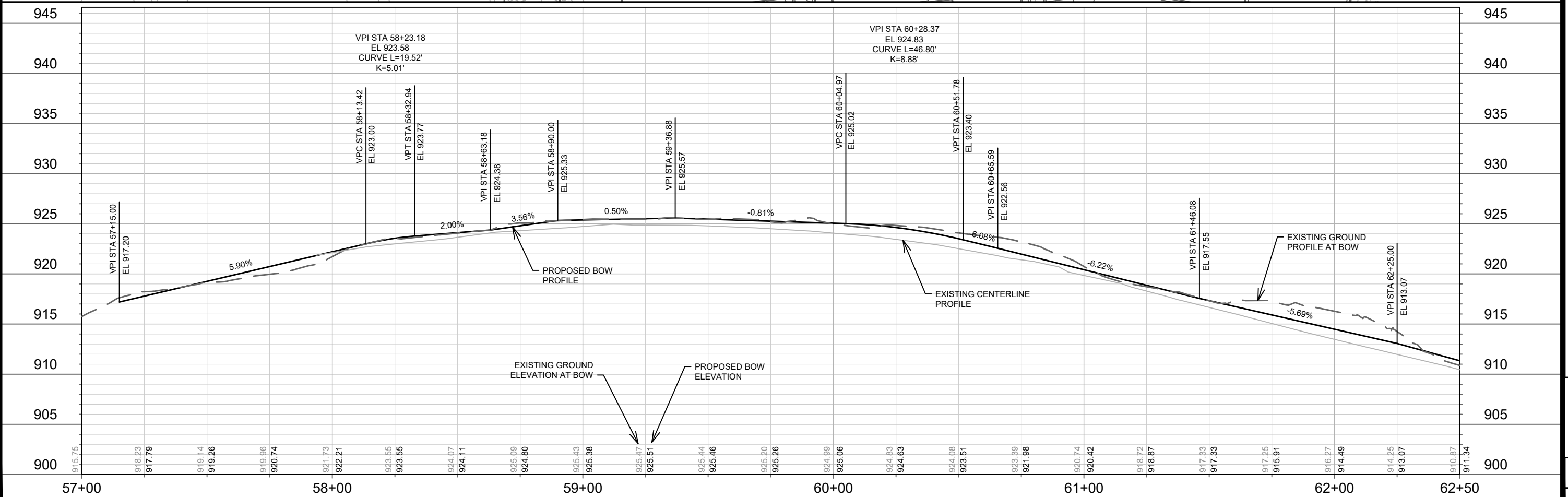
DEVELOPER SHALL BE RESPONSIBLE FOR COORDINATING AND SCHEDULING AND REQUIRED RELOCATION OR ADJUSTING OF PRIVATE UTILITY FACILITIES SUCH AS POLES, PEDESTALS, STRUCTURES, BOXES, CASTINGS OR HANDHOLES, WITH PRIVATE UTILITY COMPANIES.

- NOTE
- 7" CONCRETE SIDEWALK & DRIVEWAY APRON, SEE COMMERCIAL DRIVEWAY PERMIT NO. LNDUSE-2019-00113
 - M:\DESIGN\Traffic\Maps_Plans\ParkingLotPlans\TELL\Latham Dr 3201
 - 5' CONCRETE SIDEWALK. CONTRACTOR SHALL CONTACT CITY FORESTRY AT 608-266-4816 BEFORE EXCAVATION FOR SIDEWALK INSTALLATION



ALL WORKS SOUTH OF STA 58+11 TO BE CONSTRUCTED BY 3205 LATHAM DR. PROJ. NO. 12962

ALL WORKS NORTH OF STA 58+11 TO BE CONSTRUCTED BY 3201 LATHAM DR. PROJ. NO. 12917



MARK	REVISION	DATE	BY

12917
MADISON, WI
CONTRACT NO.: 8545

LATHAM DRIVE SIDEWALK PLAN & PROFILE
3201 LATHAM DRIVE
M:\DESIGN\Projects\12917\CAD\Streets\12917EN-PnP.dwg

12917
P-1

CONTRACTOR SHALL TAKE PRECAUTIONS DURING CONSTRUCTION TO NOT DISFIGURE, SCAR, OR IMPAIR THE HEALTH OF ANY STREET TREE. CONTRACTOR SHALL OPERATE EQUIPMENT IN A MANNER AS TO NOT DAMAGE THE BRANCHES OF THE STREET TREE(S). THIS MAY REQUIRE USING SMALLER EQUIPMENT AND LOADING AND UNLOADING MATERIALS IN A DESIGNATED SPACE AWAY FROM TREES ON THE CONSTRUCTION SITE. ANY DAMAGE OR INJURY TO EXISTING STREET TREES (EITHER ABOVE OR BELOW GROUND) SHALL BE REPORTED IMMEDIATELY TO CITY FORESTRY AT 266-4816. PENALTIES AND REMEDIATION SHALL BE REQUIRED.

SECTION 107.13(G) OF CITY OF MADISON STANDARD SPECIFICATIONS FOR PUBLIC WORKS CONSTRUCTION ADDRESSES SOIL COMPACTION NEAR STREET TREES AND SHALL BE FOLLOWED BY CONTRACTOR. THE STORAGE OF PARKED VEHICLES, CONSTRUCTION EQUIPMENT, BUILDING MATERIALS, REFUSE, EXCAVATED SPOILS OR DUMPING OF POISONOUS MATERIALS ON OR AROUND TREES AND ROOTS WITHIN FIVE (5) FEET OF THE TREE OR WITHIN THE PROTECTION ZONE IS PROHIBITED.

DEVELOPER SHALL BE RESPONSIBLE FOR COORDINATING AND SCHEDULING AND REQUIRED RELOCATION OR ADJUSTING OF PRIVATE UTILITY FACILITIES SUCH AS POLES, PEDESTALS, STRUCTURES, BOXES, CASTINS OR HANDHOLES, WITH PRIVATE UTILITY COMPANIES.

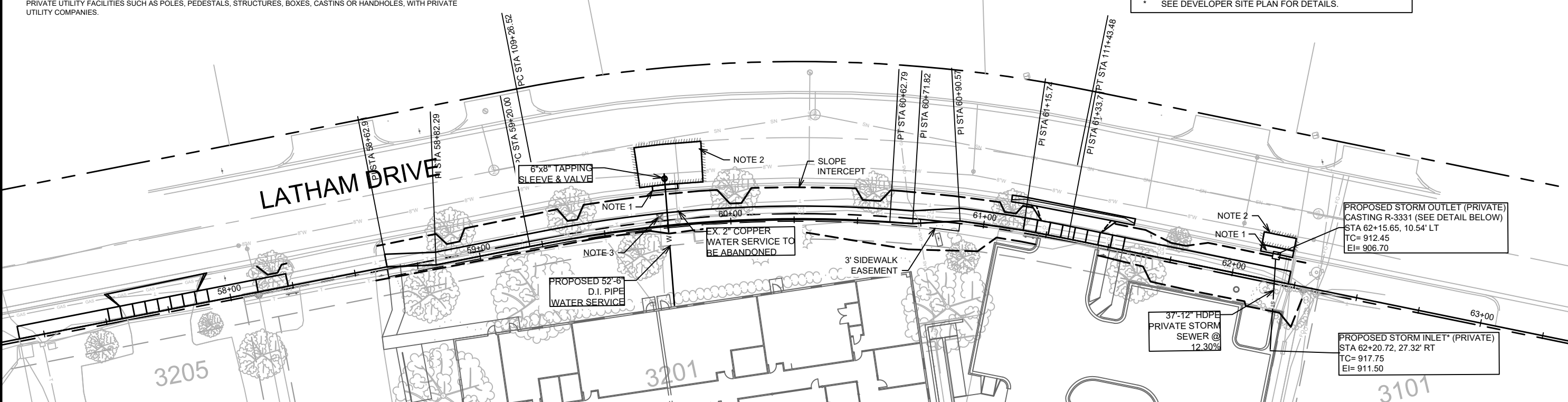
3202

3100

NOTES

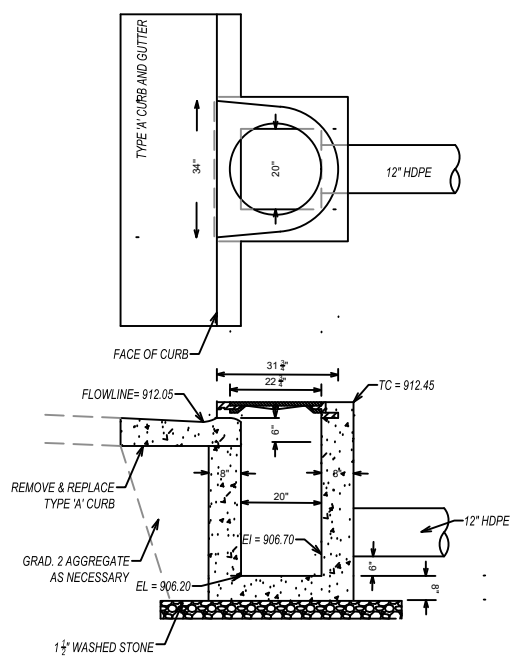
1. REMOVE & REPLACE CURB & GUTTER AS NECESSARY FOR PROPOSED UTILITY WORK.
2. PAVEMENT SAWCUT AND FINAL PAVEMENT PATCHING LIMITS SHALL BE AS DIRECTED BY CITY CONSTRUCTION ENGINEER.
3. ADJUST UTILITY VAULT TO MATCH PROPOSED SIDEWALK.

* SEE DEVELOPER SITE PLAN FOR DETAILS.



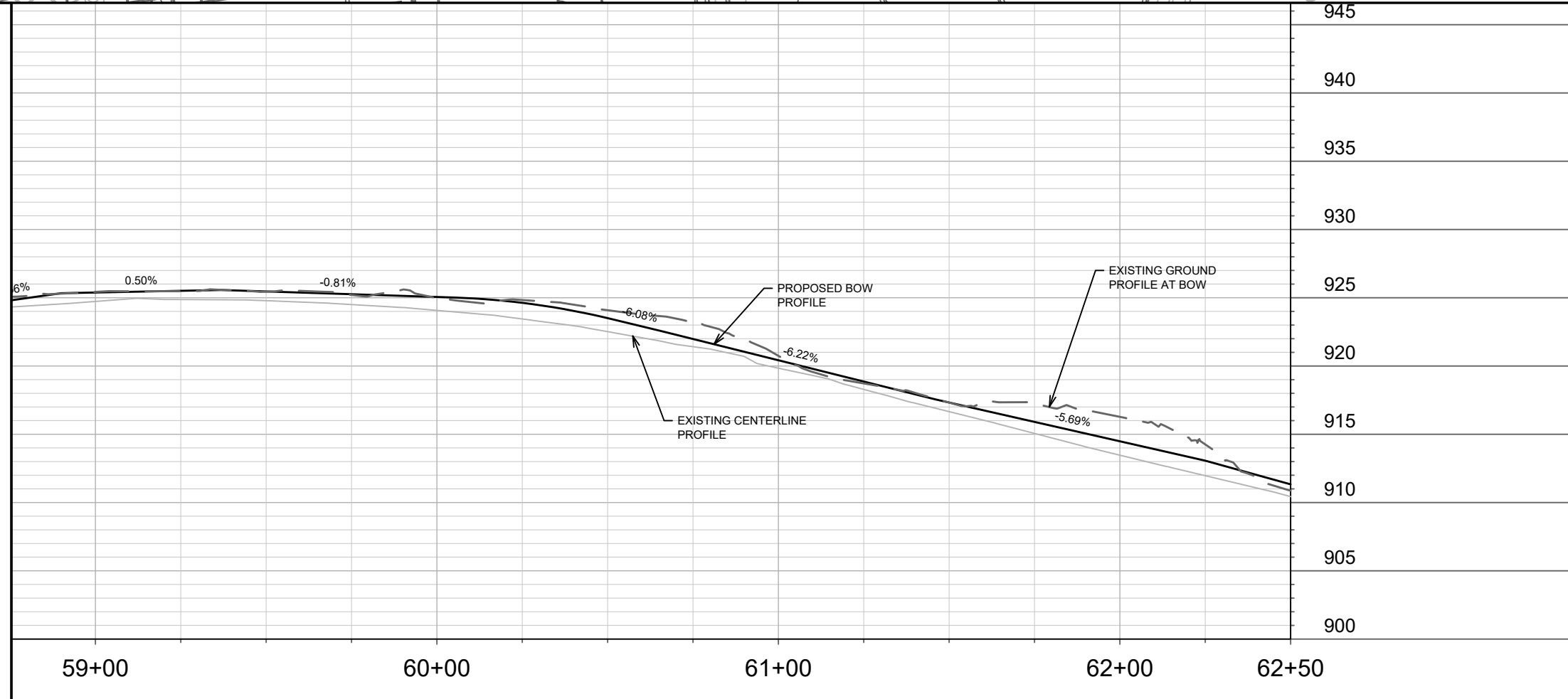
MARK	REVISION	DATE	BY
Designed By: IO			Date: 10/20/2020 12:26 PM
Scale: 1" = 40'			P-1
12917			8545

12917
 MADISON, WI
 CONTRACT NO: 8545



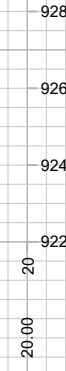
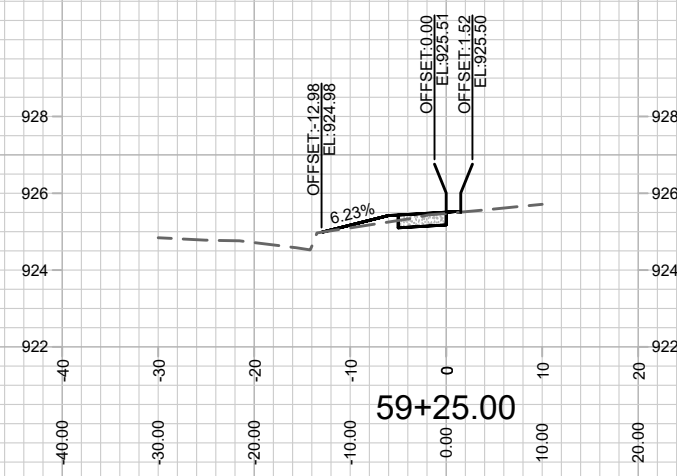
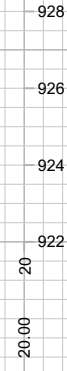
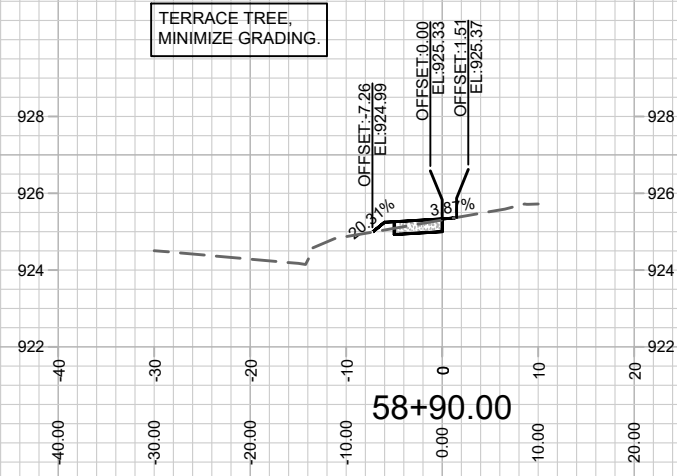
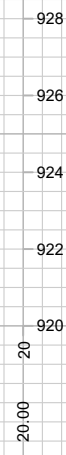
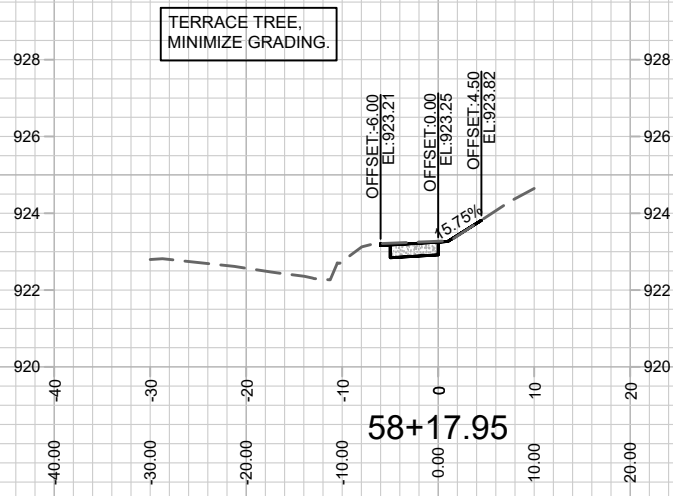
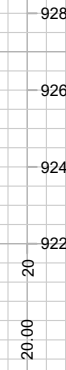
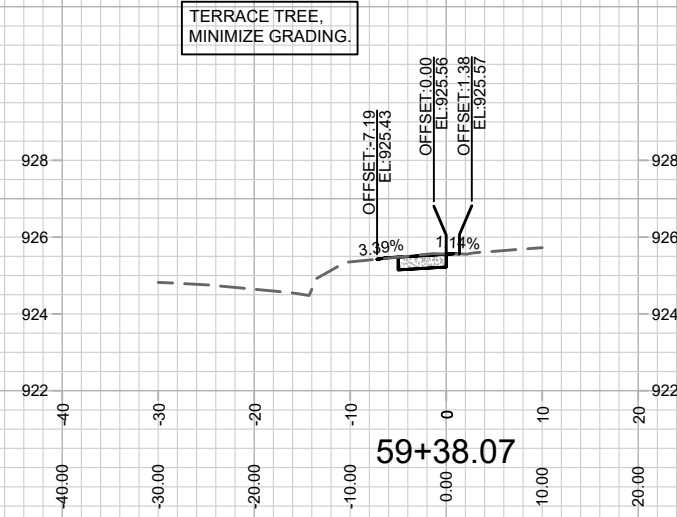
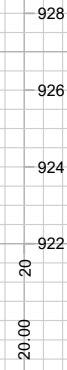
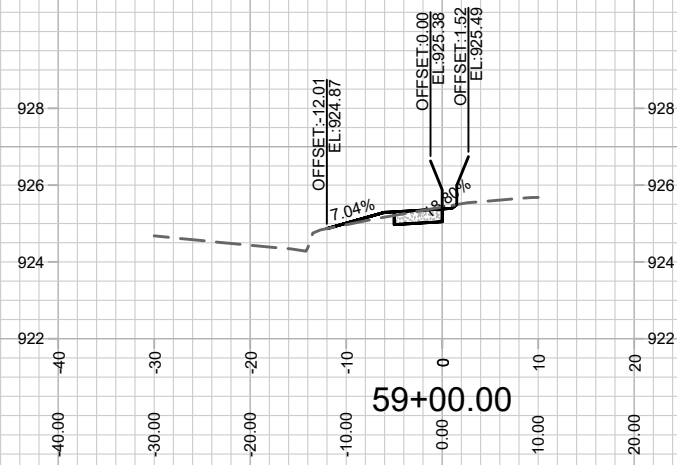
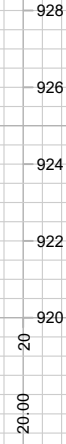
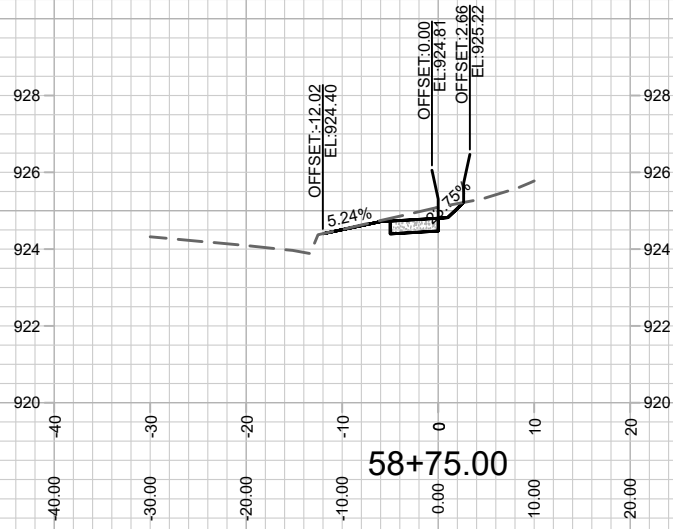
**CURB OUTLET STRUCTURE
 STA 62+15 (NOT TO SCALE)**

- NOTES:**
- ① TYPICAL LOCATION FOR INCOMING PIPE SHOWN, ALTERNATE INCOMING LOCATIONS ON EITHER SIDE.
 - ② CURB OUTLET STRUCTURE FRAME AND LID ARE NEENAH CASTING R-3331.
 - ③ THIS DETAIL IS REVISED CITY S.D.D. 5.7.13. CONSTRUCT PER CITY STANDARD SPECIFICATIONS.



LATHAM DRIVE UTILITIES SHEET
 3201 LATHAM DRIVE
 M:\DESIGN\Projects\12917\CAD\Streets\12917EN-U-Utilities.dwg

12917
 U-1



MARK	REVISION	DATE	BY

Designed By: IO
12917

Date: 10/13/2020 12:04 PM
Scale: 1" = 20'

X-1

12917

MADISON, WI

8545

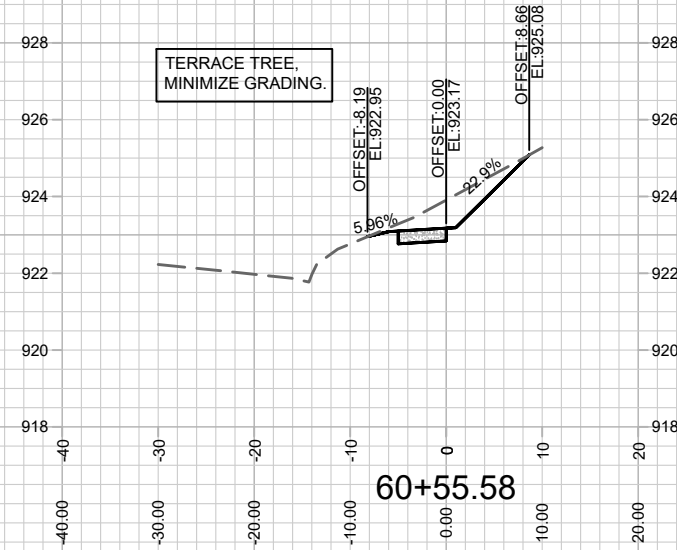
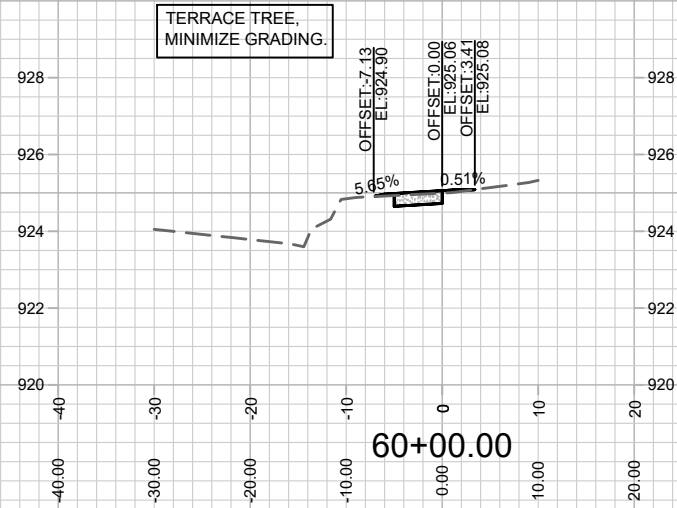
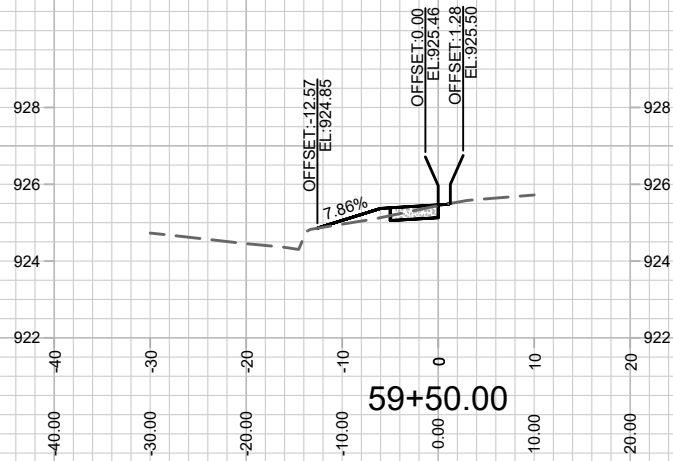
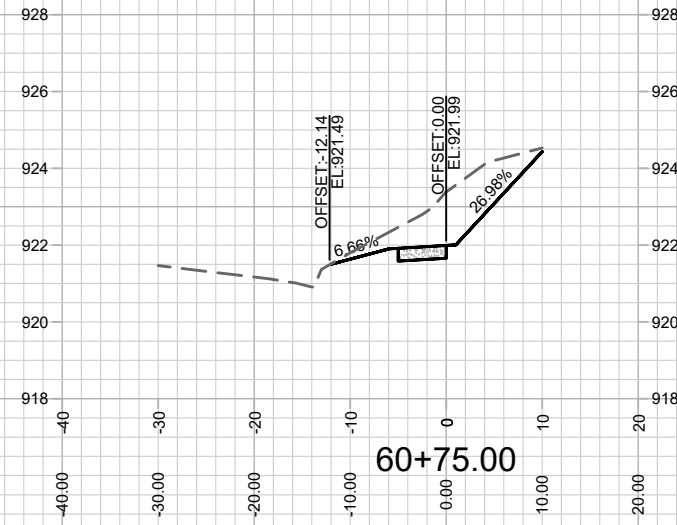
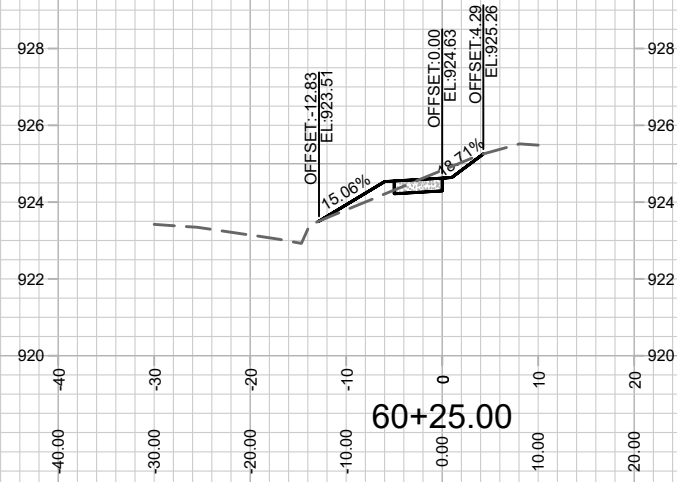
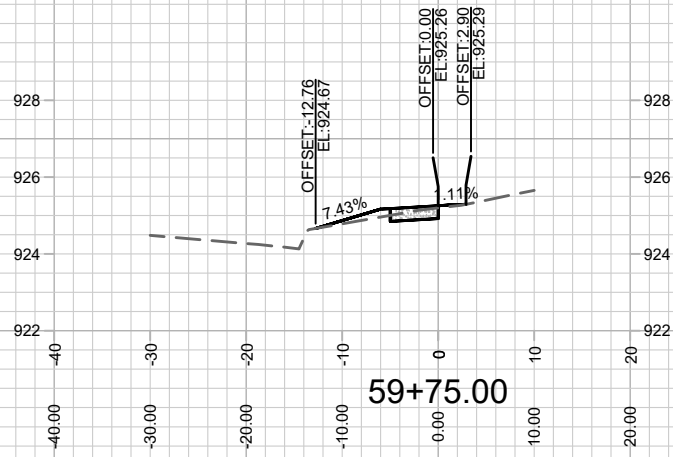
CONTRACT NO:

3201 LATHAM DRIVE CROSS SECTION

3201 LATHAM DRIVE

M:\DESIGN\Projects\12917\CAD\Streets\12917EN-Corridor.dwg

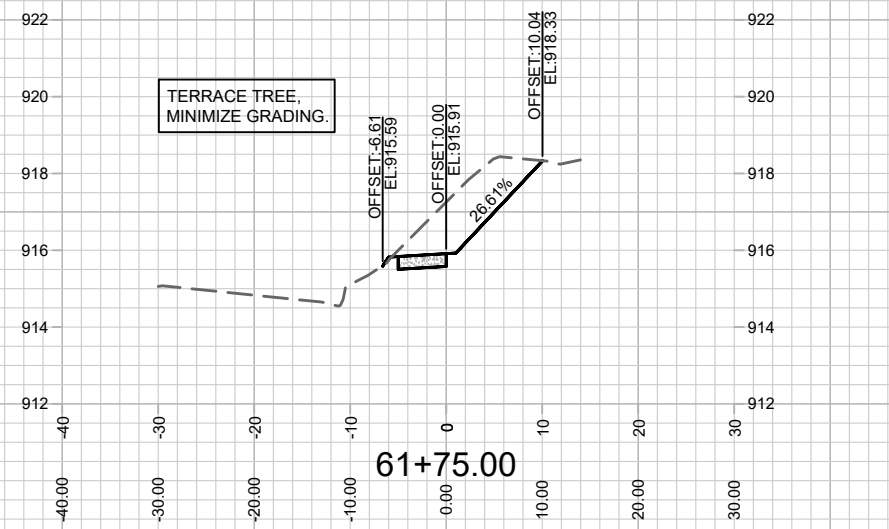
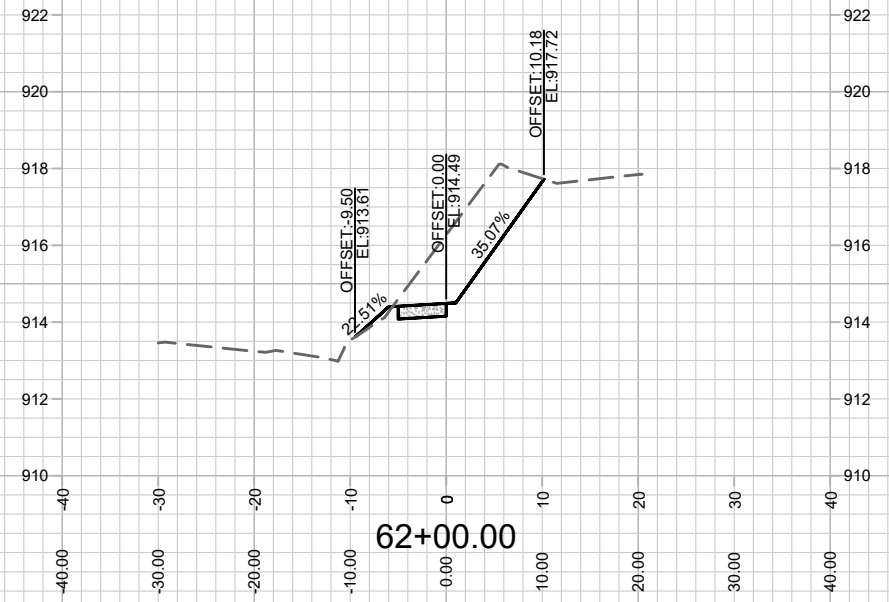
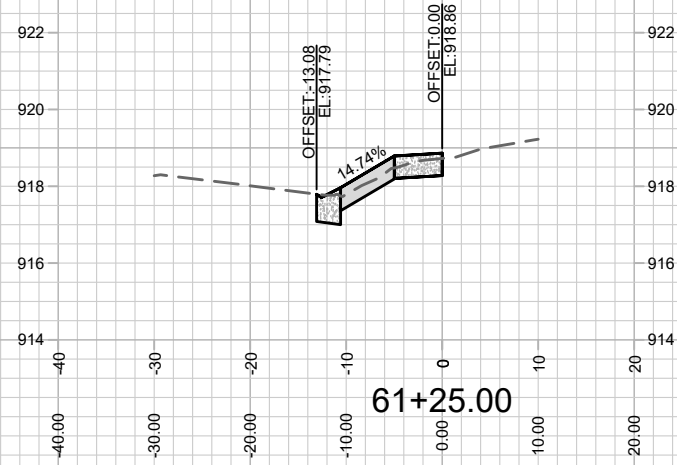
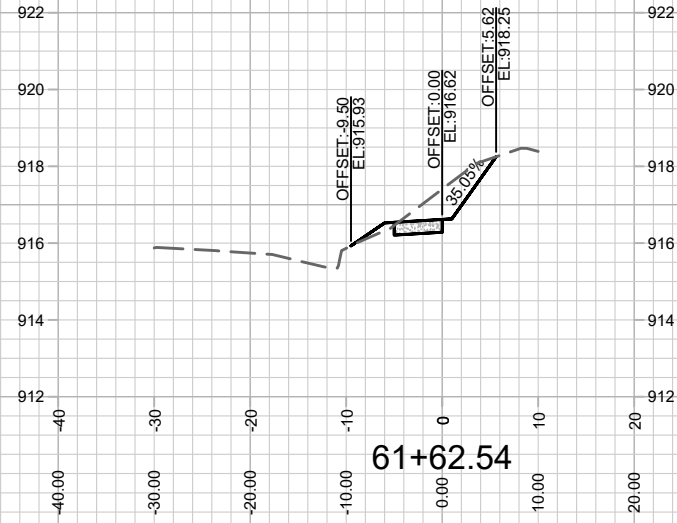
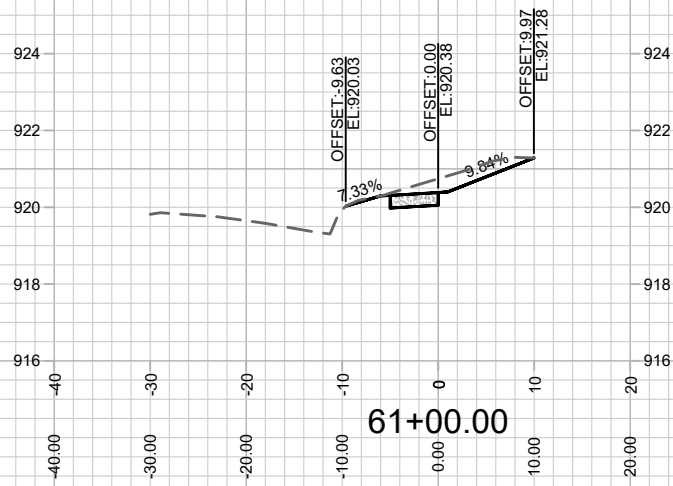
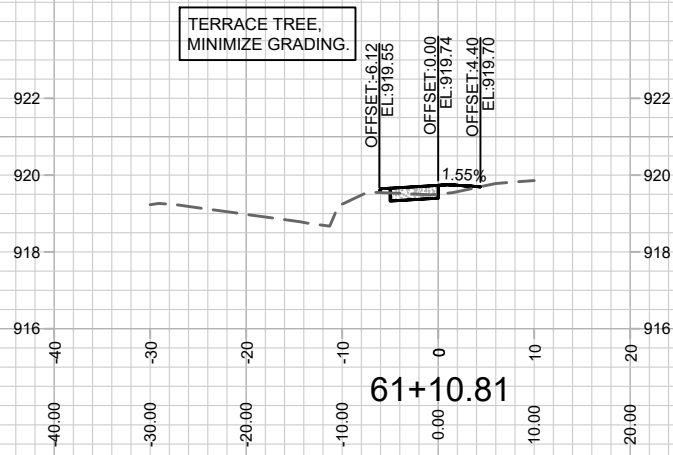




MARK	REVISION	DATE	BY
12917	12917	10/13/2020 12:03 PM	X-2

12917
MADISON, WI
8545
CONTRACT NO:

3201 LATHAM DRIVE CROSS SECTION
3201 LATHAM DRIVE
M:\DESIGN\Projects\12917\CAD\Streets\12917EN-Corridor.dwg



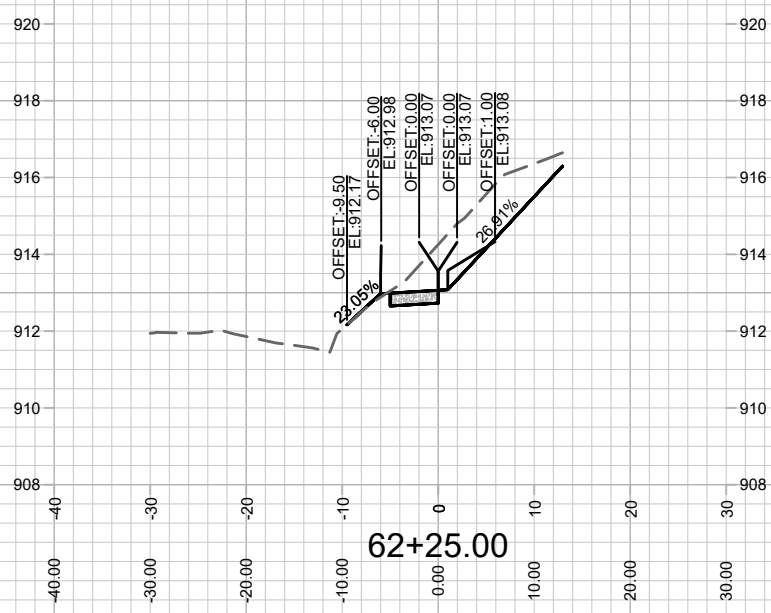
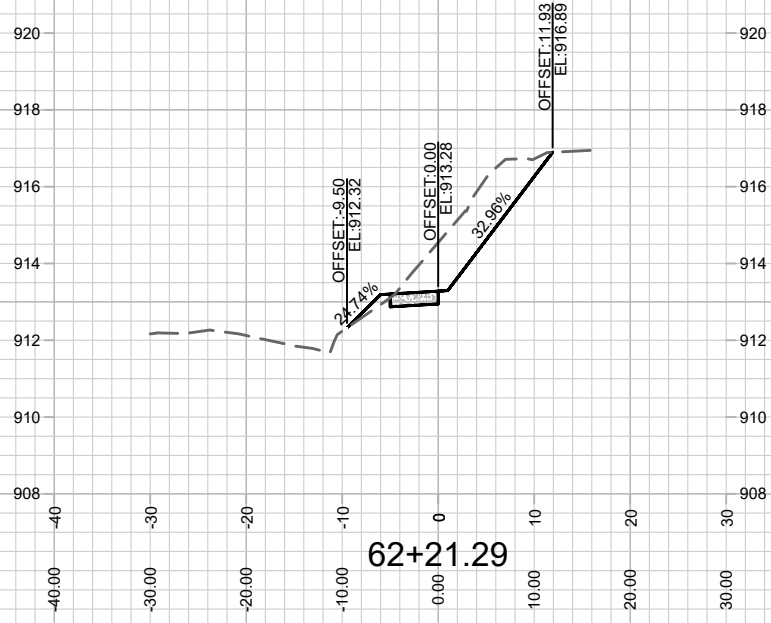
MARK	REVISION	DATE	BY

Designed By: ###
Date: 10/13/2020 11:56 AM
Scale: 1" = 20'
12917

12917
MADISON, WI
CONTRACT NO: 8545

3201 LATHAM DRIVE CROSS SECTION
3201 LATHAM DRIVE
M:\DESIGN\Projects\12917\CAD\Streets\12917EN-Corridor.dwg





3201 LATHAM DRIVE CROSS SECTION

3201 LATHAM DRIVE

M:\DESIGN\Projects\12917\CAD\Streets\12917EN-Corridor.dwg

12917

MADISON, WI

CONTRACT NO: 8545

MARK	REVISION	DATE	BY
12917	12917	10/13/2020 11:59 AM	X-4

12917
X-4