

Madison, Wisconsin

# CITY OF MADISON

## CITY ENGINEERING DIVISION

### DEPARTMENT OF PUBLIC WORKS

# PLAN OF PROPOSED IMPROVEMENT

**INDEX OF SHEETS**

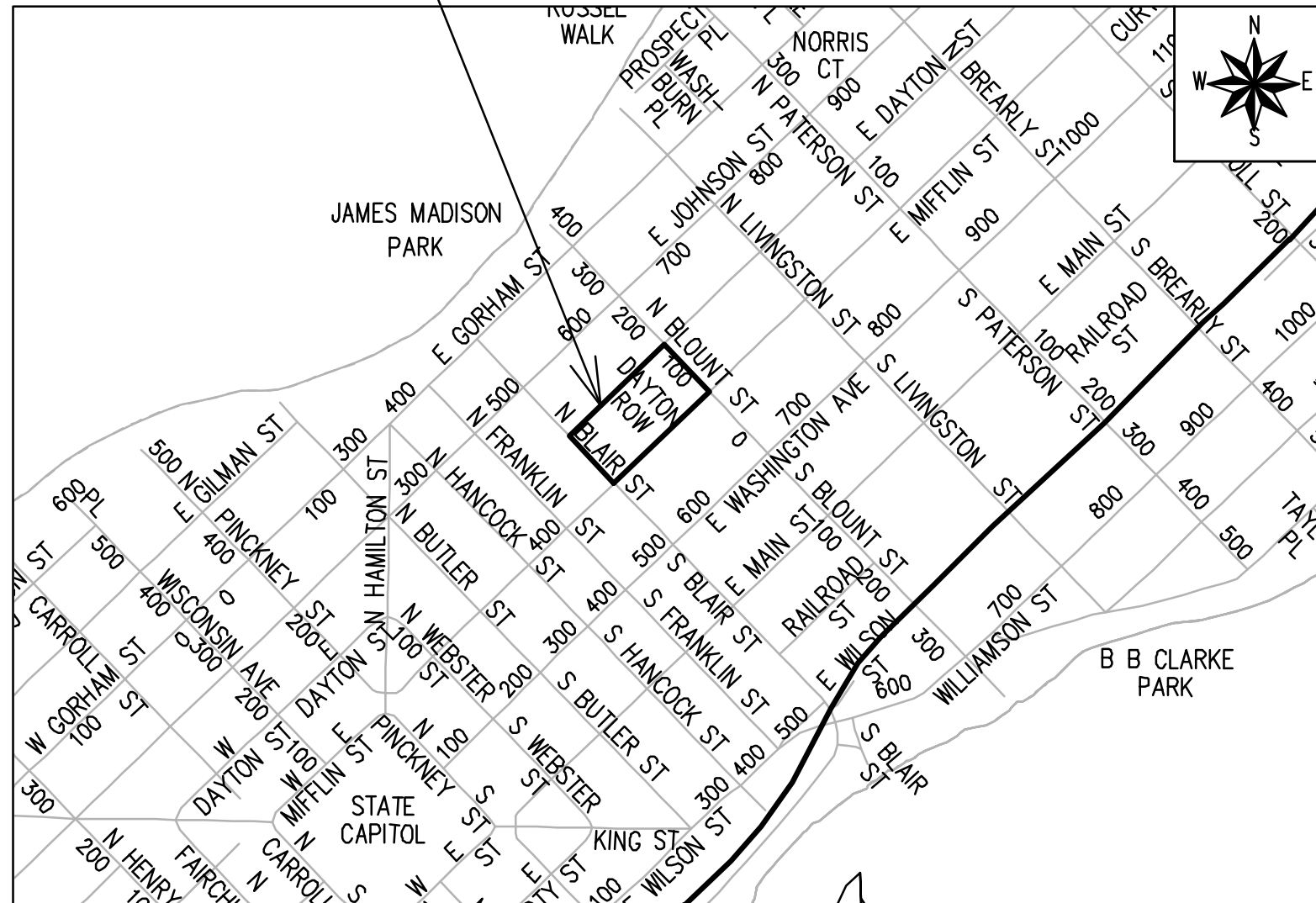
SHEET NO.	TITLE
1	
D1	STANDARD NOTES
D2	TYPICAL SECTIONS
P1-P2	PLAN & PROFILE
U1-U2	UTILITIES PLAN & PROFILE
U3	SANITARY SEWER SCHEDULE
U4	STORM SEWER SCHEDULE
X1-X2	CROSS SECTIONS

NO MAINTENANCE PLAN REQUIRED

Revision 4 - 6/21/24  
Sheets U1, U2, U4

**PROJECT LOCATION**

CITY PROJECT NO. 14513  
CONTRACT NO. 9277



PUBLIC IMPROVEMENT PROJECT APPROVED

APPROVED DATE: FEBRUARY 7, 2023

BY THE COMMON COUNCIL OF MADISON, WISCONSIN

PUBLIC IMPROVEMENT DESIGN APPROVED BY:

*[Signature]* Dec 15, 2023

City Engineer Date

STREET DESIGNED BY:



Dec 15, 2023

STORM SEWER DESIGNED BY:



Dec 15, 2023

WATER DESIGNED BY:

LATERALS ONLY

SANITARY SEWER DESIGNED BY:



Dec 15, 2023

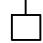


PLOT SCALE: 1 IN=1 FT\_XREF  
PLOT NAME: ----  
REV. DATE: 12/15/2023 11:47 AM  
ORIGINATOR: CITY\_OF\_MADISON  
FILE NAME: M:\DESIGN\Projects\14513\CAD\Streets\14513CN-TitleSheet.dwg DATE: 12/15/2023 11:48 AM

THE LOCATION AND INFORMATION FOR PROPOSED NEW TREES, IN THE PUBLIC RIGHT OF WAY OR ON PUBLIC LANDS ARE APPROXIMATE AND ARE SHOWN FOR REFERENCE ONLY. THE LOCATIONS, SPECIFICATIONS AND PLANTING METHODS OF ALL PROPOSED NEW OR REPLACEMENT TREES IN THE PUBLIC RIGHT OF WAY OR ON PUBLIC LANDS SHALL BE APPROVED BY THE CITY FORESTER PRIOR TO INSTALLATION.

NO TREES IN THE RIGHT OF WAY OR ON PUBLIC LANDS SHALL BE TRIMMED, PRUNED, REMOVED OR ADVERSELY AFFECTED IN ANY WAY UNTIL THE DEVELOPER HAS RECEIVED WRITTEN PERMISSION FROM THE CITY ENGINEER OR CITY FORESTER. SAID WRITTEN PERMISSION SHALL INCLUDE LANGUAGE INDICATING THAT SECTION 10.101 OF THE MADISON GENERAL ORDINANCES AND ADMINISTRATIVE PROCEDURE MEMORANDUM NO. 6-2, REFERRING TO NOTIFICATION OF PROPERTY OCCUPANTS AND/OR OWNERS, HAS BEEN COMPLIED WITH.

DEVELOPER MUST SUBMIT A TRAFFIC CONTROL PLAN TO CITY TRAFFIC ENGINEERING AT LEAST 14 DAYS PRIOR TO THE START OF WORK. WORK SHALL NOT PROCEED UNTIL AN APPROVED TRAFFIC CONTROL PLAN IS IN PLACE.

CONTACT THE PROJECT ENGINEER AND DESIGNER, FADI EL MUSA, AT FELMUSAGONZALEZ@CITYOFMADISON.COM FOR CAD FILES AND ALIGNMENT DATA PRIOR TO STAKING.

CONVENTIONAL SIGNS	
FIELD VERIFY ALL UTILITY LOCATIONS	
GAS	—— G ——
STORM SEWER	—— ST ——
SANITARY SEWER	—— SAN ——
WATER	—— W ——
BURIED ELECTRIC	—— E ——
OVERHEAD ELECTRIC	—— OH ——
POWER POLE	
ADA COMPLIANT RAMP W/ DETECTABLE WARNING FIELD	
COMBUSTIBLE FLUIDS	

UNDERDRAINS SHALL BE INSTALLED PER STANDARD DETAIL DRAWING 4.05 FOR 75' ON EACH SIDE OF THE LOW POINT, OR TO THE NEAREST CURB HIGH POINT. ALL UNDERDRAIN SHALL BE WRAPPED.

ALL GUTTERS SHALL DRAIN WITH A MINIMUM GRADE OF 0.5% TOWARD STORM SEWER INLETS.

ALL DITCHES SHALL DRAIN WITH A MINIMUM GRADE OF 0.5%

THE CROSS SLOPE OF SIDEWALKS AND BARRIER FREE SIDEWALK CURB RAMPS SHALL TYPICALLY BE 1.5%. THE LONGITUDINAL GRADE OF BARRIER FREE SIDEWALK CURB RAMPS SHALL NOT EXCEED 8.33%. ALL SIDEWALK RAMPS SHALL BE CONSTRUCTED ACCORDING TO S.D.D. 3.04. AT ALL OTHER LOCATIONS THE LONGITUDINAL GRADE OF SIDEWALKS SHALL NOT EXCEED 5.0 % OR THE ADJACENT STREET GRADE WHICHEVER IS GREATER NOR BE LESS THAN 0.5% AND SHALL DRAIN TOWARD STORM SEWER INLETS. SIDE SLOPES WITHIN TEN FEET OF A PUBLIC SIDEWALK SHALL NOT EXCEED 4:1. ALL SIDEWALK AND SIDEWALK RAMP ELEVATIONS AND GRADES SHALL BE FIELD VERIFIED AND SET TO COMPLY WITH THE CITY OF MADISON STANDARD SPECIFICATIONS AND THE A.D.A. GUIDELINES.

OBTAIN A PRINT OUT OF THE ALIGNMENTS FROM THE CITY PROJECT ENGINEER PRIOR TO STAKING THIS PROJECT. THE CITY PROJECT ENGINEER IS FADI EL MUSA, EMAIL: FELMUSAGONZALEZ@CITYOFMADISON.COM

CURB STATION AND OFFSETS SHALL BE TO THE EDGE OF PAVEMENT UNLESS OTHERWISE INDICATED. CURB ELEVATIONS SHALL BE TO THE EDGE OF PAVEMENT UNLESS OTHERWISE INDICATED.

POWER POLES AND OTHER OBSTRUCTIONS SHALL BE MOVED TO PROVIDE 2 FEET MINIMUM OF CLEAR DISTANCE FROM ANY FACE OF CURB OR EDGE OF SIDEWALK UNLESS OTHERWISE INDICATED ON THE PLANS.

ANY INFORMATION SHOWN ON THIS PLAN, WHICH IS NOT PART OF THIS RIGHT-OF-WAY PROJECT, IS PRELIMINARY AND NOT FOR CONSTRUCTION.

THERE MAY BE EXISTING UTILITIES OR OTHER FEATURES WHICH ARE EITHER NOT SHOWN OR SHOWN INCORRECTLY ON THIS PLAN. IT IS THE RESPONSIBILITY OF THE DEVELOPER TO LOCATE AND IDENTIFY ALL UTILITIES AND TOPOGRAPHY WHICH MAY AFFECT THE CONSTRUCTION OF THESE IMPROVEMENTS.

ALL PERMANENT SIGNING AND POSTING WILL BE DETERMINED AND PROVIDED BY THE TRAFFIC ENGINEERING DIVISION, FOLLOWING CONSTRUCTION OF THESE IMPROVEMENTS.

THE DEVELOPER SHALL PROVIDE, INSTALL AND MAINTAIN ALL STREET END BARRICADES, SIGNING AND TRAFFIC CONTROL, AS REQUIRED BY THE CITY TRAFFIC ENGINEER.

PAVEMENT SAWCUTS SHALL BE AS DIRECTED BY THE CITY CONSTRUCTION ENGINEER. SAWCUTS SHOWN ON THE PLAN ARE APPROXIMATE.


CURB ON CUL DE SACS SHALL BE INSTALLED ACCORDING TO S.D.D 3.05.

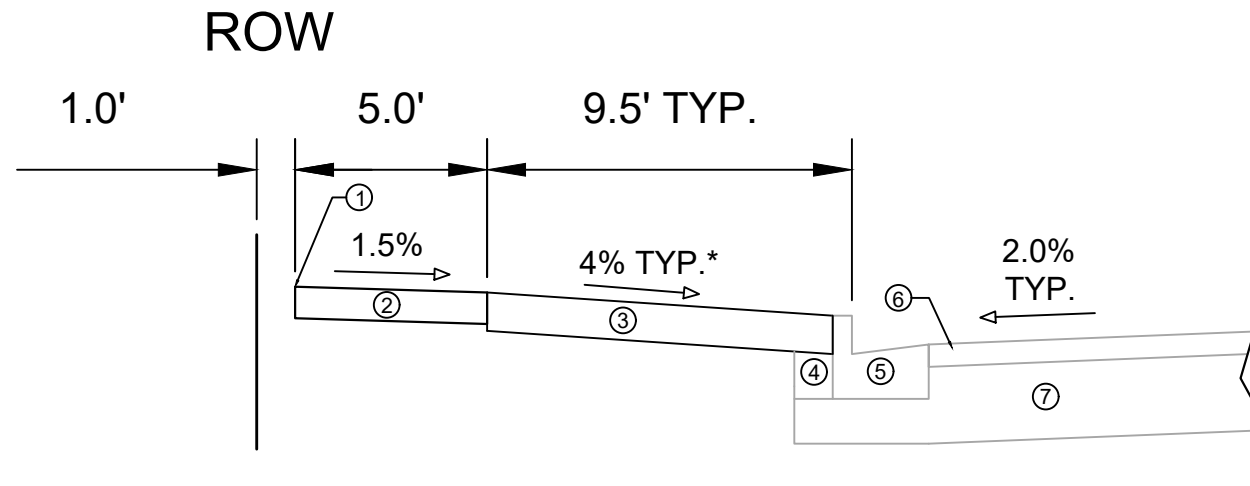
ALL WORK IN THE RIGHT OF WAY AND PUBLIC EASEMENTS SHALL BE IN ACCORDANCE WITH THE CITY OF MADISON STANDARD SPECIFICATIONS FOR PUBLIC WORKS CONSTRUCTION LATEST EDITION.

ALL PROPOSED IMPROVEMENTS IN THE RIGHT-OF-WAY ARE BASED ON SURVEY DATA PROVIDED BY THE DEVELOPER OR ITS CONSULTANT. IN THE CASE THAT THE PROPOSED IMPROVEMENTS CAN NOT BE INSTALLED PER THESE PLANS OR THE CITY OF MADISON STANDARD SPECIFICATION FOR PUBLIC WORKS CONSTRUCTION, LATEST EDITION, THE DEVELOPER SHALL BE RESPONSIBLE FOR THE COST OF EXTRA WORK DUE TO INACCURACIES OF THE SURVEY.

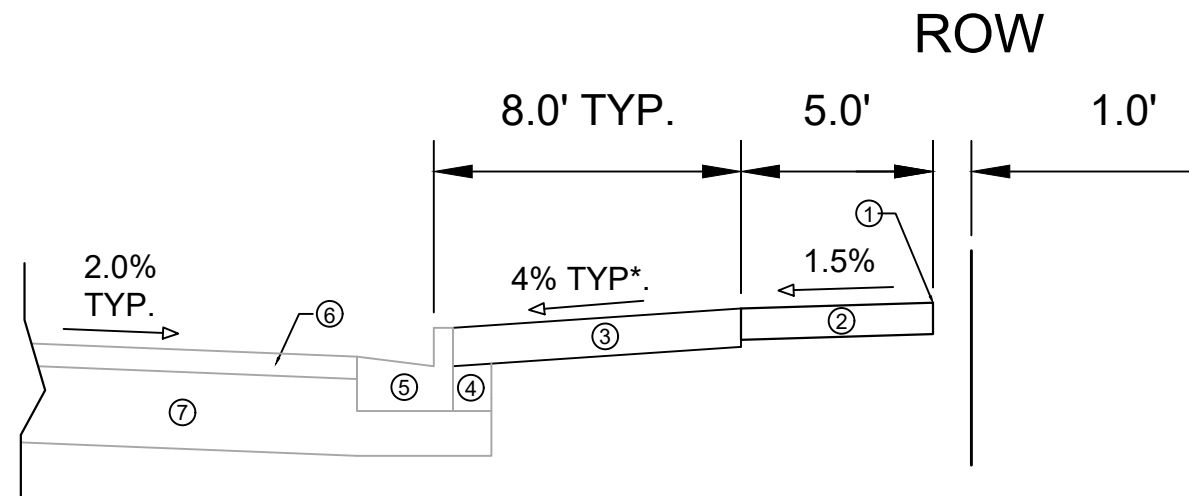
ALL UTILITY VERIFICATIONS AND ACCURACY OF THE DRAWINGS ARE THE RESPONSIBILITY OF THE DEVELOPER. ANY CONFLICTS THAT ARISE FROM MISSING OR ERRONEOUS INFORMATION WILL BE AT THE EXPENSE OF THE DEVELOPER. NO PRECAST STRUCTURES WILL BE APPROVED FOR STORM OR SANITARY SEWER UNTIL ALL POTENTIAL UTILITY CONFLICTS ARE RESOLVED.

IN LOCATIONS WHERE PAVEMENT RESTORATION IS NOT IDENTIFIED ADJACENT TO CURB AND GUTTER REPLACEMENT, IT IS ASSUMED THAT CURB AND GUTTER WILL BE REPLACED WITHOUT DAMAGING ADJACENT PAVEMENT. IF DAMAGED, THE MILL AND OVERLAY LIMITS SHALL BE EXTENDED BY THE CITY CONSTRUCTION ENGINEER AS NECESSARY TO MEET THE STANDARD PATCHING CRITERIA.

14513	MADISON, WI	9277
STANDARD NOTES	611 E DAYTON STREET	CONTRACT NO:
M:\DESIGN\Projects\14513\CAD\Streets\14513EN-Details.dwg		
		
14513		
D-1		



TYPICAL SECTION  
E. MIFFLIN ST.



TYPICAL SECTION  
E. DAYTON ST.

- ① POINT REFERRED TO ON PROFILE.
- ② 5" CONCRETE SIDEWALK, 7" AT DRIVEWAYS.
- ③ 6" TOPSOIL, SEED AND MAT.
- ④ EXISTING FILL TO REMAIN, INSTALL AT CURB REPLACEMENT LOCATIONS.
- ⑤ EXISTING CURB & GUTTER TYPE A, REPLACE AT LOCATIONS SHOWN IN P SHEETS OR AS DETERMINED BY THE ENGINEER.
- ⑥ EXISTING ASPHALTIC PAVEMENT TO REMAIN.
- ⑦ EXISTING ROAD BASE TO REMAIN.

SPECIAL NOTES:

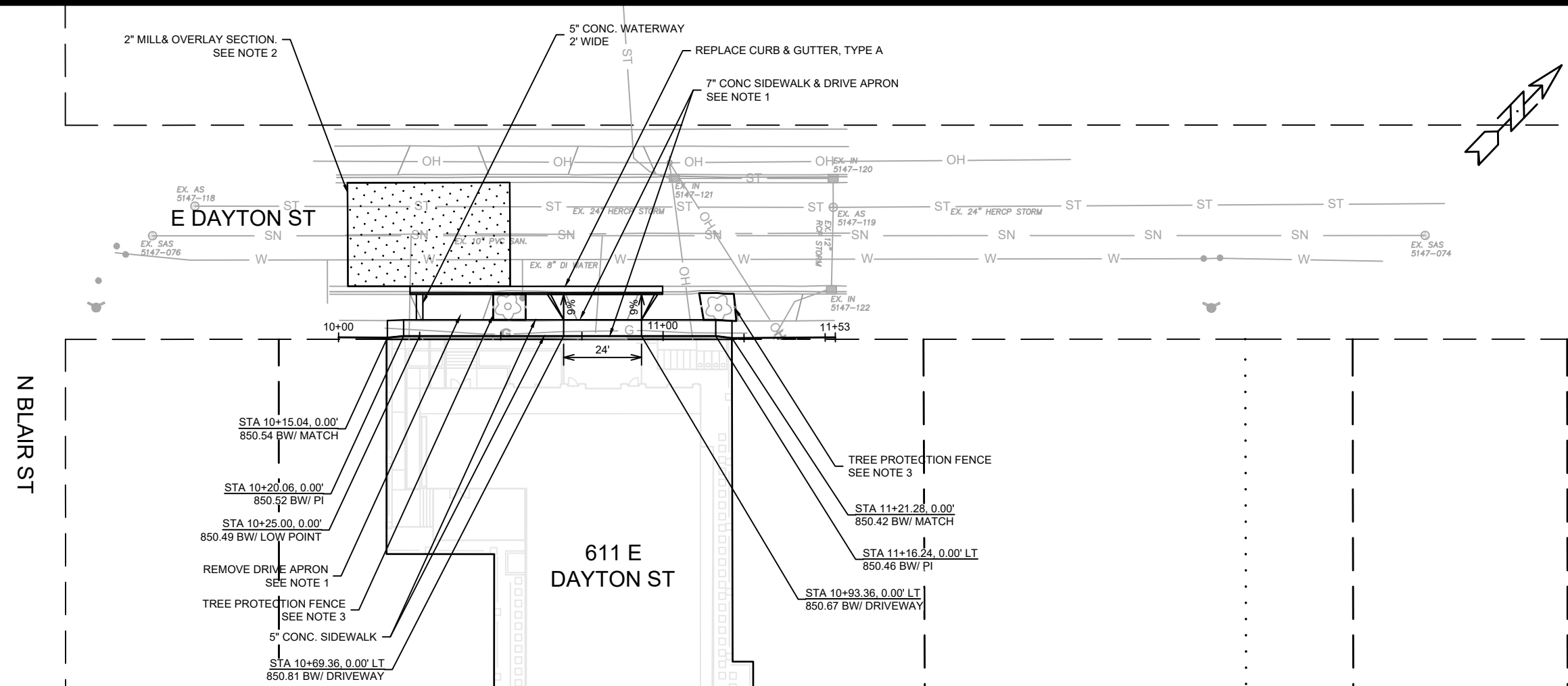
\* SEE X-SHEETS FOR CROSS SLOPES

MARK	REVISION	DATE	BY
14513		1/13/2023 9:26 AM	
Designed By: FBEG			Scale: D-2

14513  
MADISON, WI  
CONTRACT NO: 9277

TYPICAL SECTIONS  
611 E DAYTON STREET  
M:\DESIGN\Projects\14513\CAD\Streets\14513EN-Details.dwg

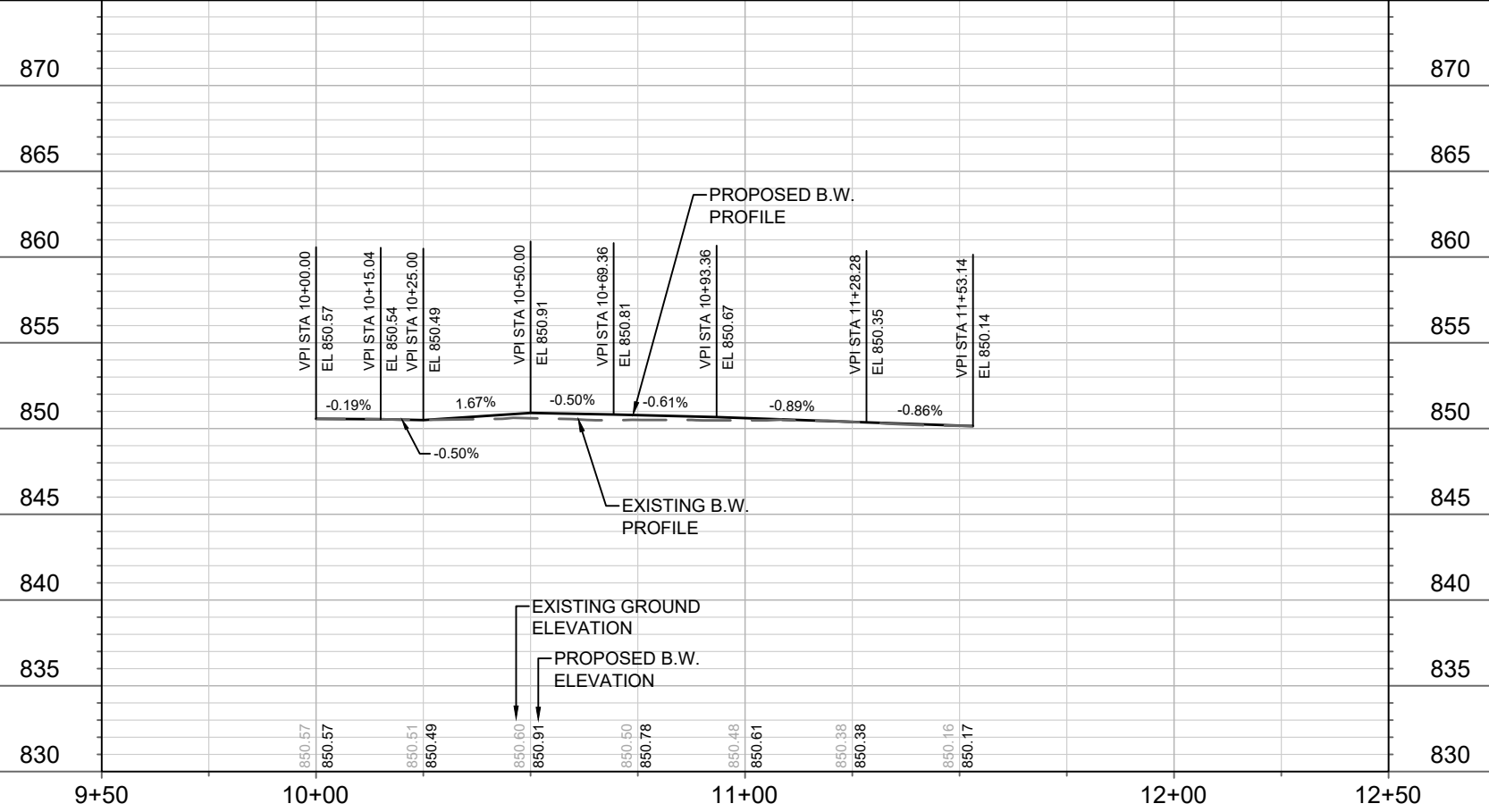




**LEGEND**

2" MILL AND OVERLAY APPROX. LIMITS

- NOTES**
- SEE COMMERCIAL DRIVEWAY PERMIT LNDUSE-2022-00069 M:\DESIGN\Traffic\Maps\_Plans\ParkingLotPlans\TE\ID\Dayton St E 609
  - AREA SHOWN IS APPROXIMATE. ACTUAL LIMITS WILL BE DETERMINED BY THE CITY CONSTRUCTION ENGINEER. OVERLAY MIX SHALL BE 4 LT 58-28-S
  - PLACE FENCE AT A MIN. OF 5' AWAY FROM THE TRUNK AND EXTEND THE ENTIRE CROSS SECTION WIDTH OF THE TERRACE



MARK	REVISION	DATE	BY
14513	14513	4/17/2023	12:04 PM
Scale: #####			P-1

14513  
MADISON, WI  
CONTRACT NO: 9277

PLAN & PROFILE - E DAYTON STREET  
611 E DAYTON STREET

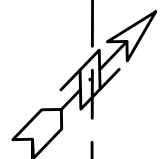
M:\DESIGN\Projects\14513\CAD\Streets\14513EN-PnP.dwg

14513  
P-1

N BLAIR ST

611 E DAYTON ST

E MIFFLIN ST



850.83 BW/ DRIVEWAY/ LOW POINT  
 STA 20+77.37, 0.00'  
 5" CONC. SIDEWALK  
 TREE PROTECTION FENCE  
 SEE NOTE 3  
 REMOVE CONC. DRIVE APRON  
 SEE NOTE 1  
 STA 20+18.31, 0.00'  
 851.12 BW/ PI  
 STA 20+13.30, 0.00'  
 851.15 BW/ MATCH  
 STA 20+89.37, 0.00'  
 850.92 BW/ DRIVEWAY/ HIGH POINT  
 STA 20+94.37, 0.00'  
 850.87 BW/ PI  
 STA 20+99.37, 0.00'  
 850.78 BW/ MATCH

20+00 21+00 21+11

EX. SAS  
5148-042

EX. IN  
5148-082

EX. SAS  
5247-056

EX. IN  
5147-063

EX. 24" RCP STORM

EX. IN  
5147-062

EX. 24" RCP STORM

LEGEND

2" MILL AND OVERLAY APPROX. LIMITS

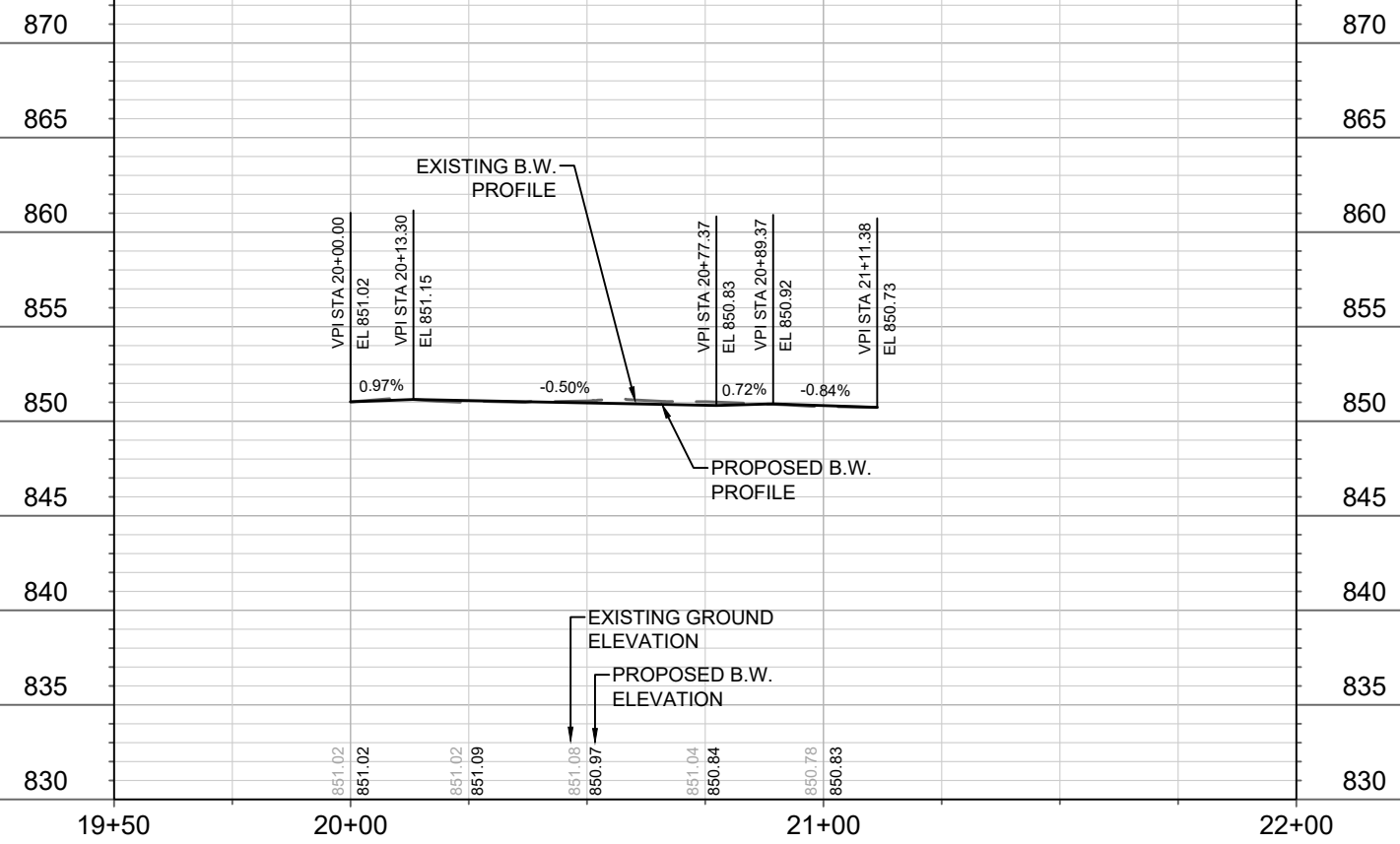
NOTES

- SEE COMMERCIAL DRIVEWAY PERMIT LNDUSE- 2022-00069  
M:\DESIGN\Traffic\Maps\_Plans\ParkingLotPlans\TEID\Dayton St E 609
- AREA SHOWN IS APPROXIMATE. ACTUAL LIMITS WILL BE DETERMINED BY THE CITY CONSTRUCTION ENGINEER. OVERLAY MIX SHALL BE 4 LT 58-28-S
- PLACE FENCE AT A MIN. OF 5' FROM THE TRUNK AND EXTEND THE ENTIRE CROSS SECTION WIDTH OF THE TERRACE

2" MILL & OVERLAY SECTION.  
SEE NOTE 2

7" CONC SIDEWALK & DRIVE APRON  
SEE NOTE 1

REPLACE CURB & GUTTER, TYPE A



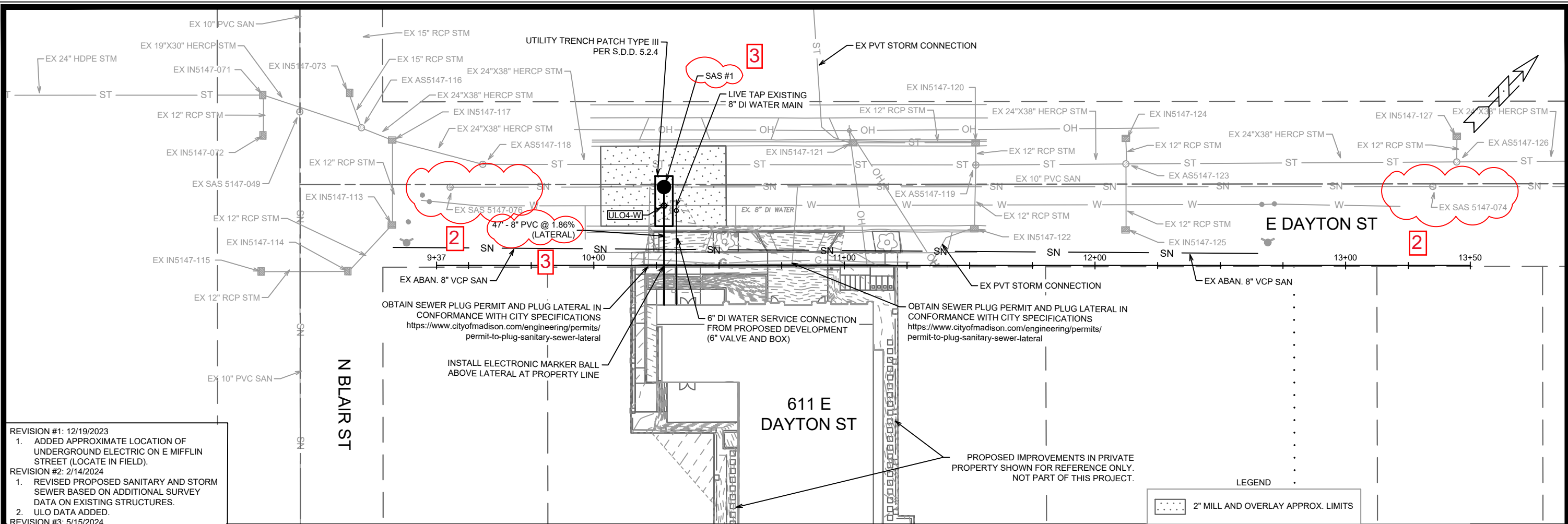
MARK	REVISION	DATE	BY
14513	14513	4/16/2023	12:04 PM

14513  
 MADISON, WI  
 CONTRACT NO: 9277

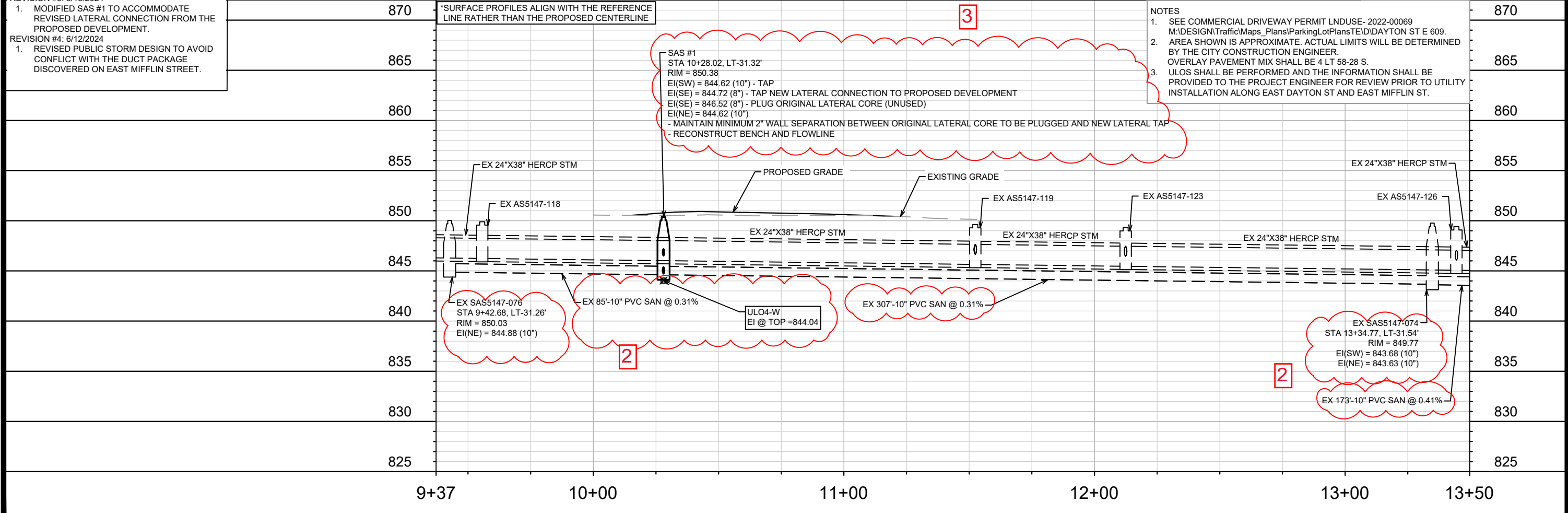
PLAN & PROFILE - E MIFFLIN STREET  
 611 E DAYTON STREET  
 M:\DESIGN\Projects\14513\CAD\Streets\14513EN-PnP.dwg



14513  
 P-2



- REVISION #1: 12/19/2023  
 1. ADDED APPROXIMATE LOCATION OF UNDERGROUND ELECTRIC ON E MIFFLIN STREET (LOCATE IN FIELD).
- REVISION #2: 2/14/2024  
 1. REVISED PROPOSED SANITARY AND STORM SEWER BASED ON ADDITIONAL SURVEY DATA ON EXISTING STRUCTURES.  
 2. ULO DATA ADDED.
- REVISION #3: 5/15/2024  
 1. MODIFIED SAS #1 TO ACCOMMODATE REVISED LATERAL CONNECTION FROM THE PROPOSED DEVELOPMENT.
- REVISION #4: 6/12/2024  
 1. REVISED PUBLIC STORM DESIGN TO AVOID CONFLICT WITH THE DUCT PACKAGE DISCOVERED ON EAST MIFFLIN STREET.



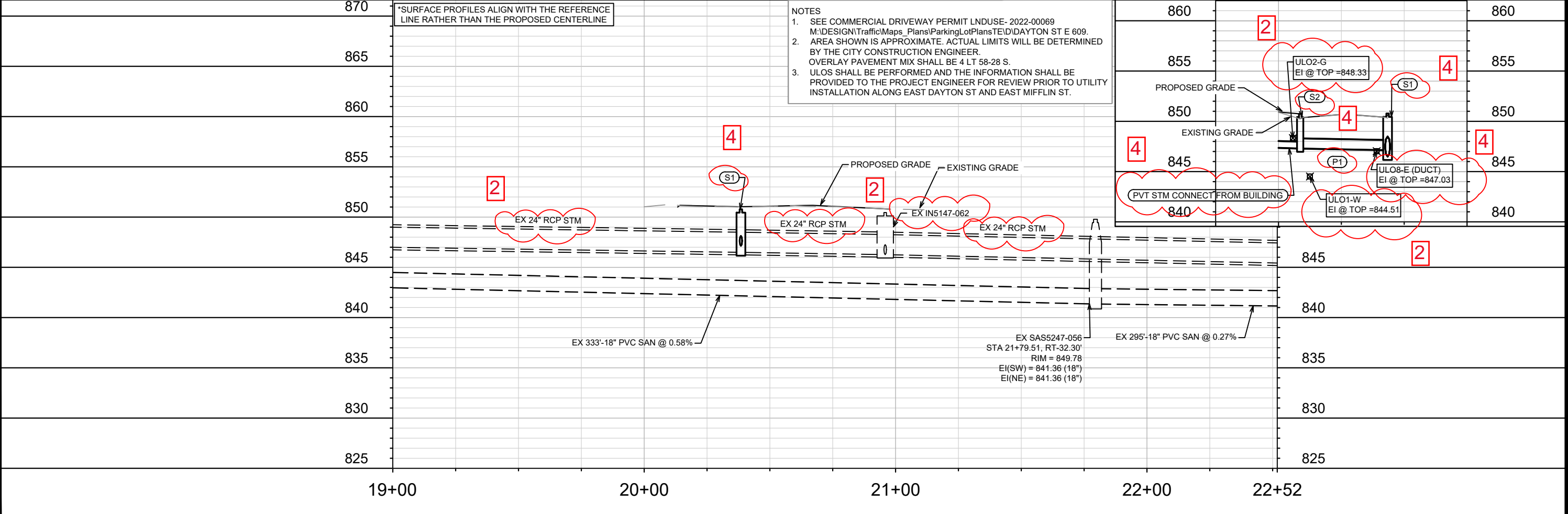
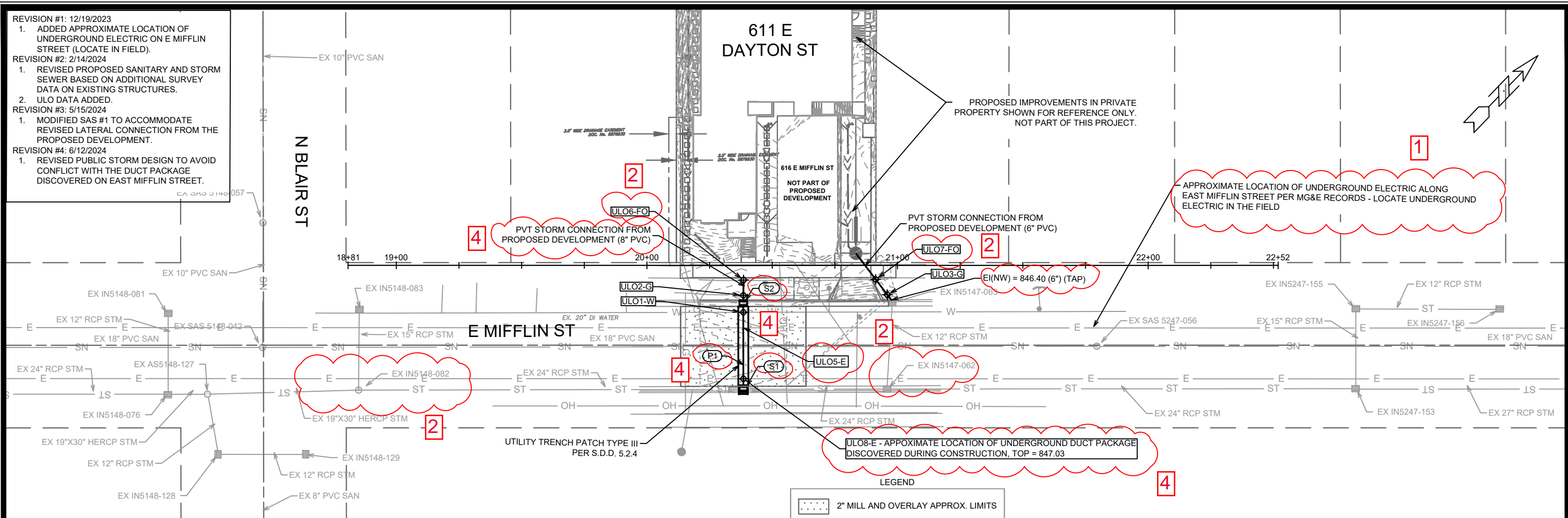
LEGEND  
 ..... 2" MILL AND OVERLAY APPROX. LIMITS

- NOTES
- SEE COMMERCIAL DRIVEWAY PERMIT LNDUSE- 2022-00069 M:\DESIGN\Traffic\Maps\_Plans\ParkingLotPlans\TE\DAYTON ST E 609.
  - AREA SHOWN IS APPROXIMATE. ACTUAL LIMITS WILL BE DETERMINED BY THE CITY CONSTRUCTION ENGINEER. OVERLAY PAVEMENT MIX SHALL BE 4 LT 58-28 S.
  - ULOS SHALL BE PERFORMED AND THE INFORMATION SHALL BE PROVIDED TO THE PROJECT ENGINEER FOR REVIEW PRIOR TO UTILITY INSTALLATION ALONG EAST DAYTON ST AND EAST MIFFLIN ST.

14513	U-1
MADISON, WI	U-1
CONTRACT NO: 9277	U-1
UTILITIES PLAN & PROFILE - EAST DAYTON STREET	U-1
611 E DAYTON STREET	U-1
M:\DESIGN\Projects\14513\CAD\Sewers\14513SWR-PipeNetwork.dwg	U-1
14513	U-1
U-1	U-1



- REVISION #1: 12/19/2023  
 1. ADDED APPROXIMATE LOCATION OF UNDERGROUND ELECTRIC ON E MIFFLIN STREET (LOCATE IN FIELD).
- REVISION #2: 2/14/2024  
 1. REVISED PROPOSED SANITARY AND STORM SEWER BASED ON ADDITIONAL SURVEY DATA ON EXISTING STRUCTURES.  
 2. ULO DATA ADDED.
- REVISION #3: 5/15/2024  
 1. MODIFIED SAS #1 TO ACCOMMODATE REVISED LATERAL CONNECTION FROM THE PROPOSED DEVELOPMENT.
- REVISION #4: 6/12/2024  
 1. REVISED PUBLIC STORM DESIGN TO AVOID CONFLICT WITH THE DUCT PACKAGE DISCOVERED ON EAST MIFFLIN STREET.



NO.	REVISION	DATE	BY
4	STORM SEWER DESIGN REVISION	6/12/24	EAC
2	RIM/IN/ELEV REVISIONS & ULOS	2/14/24	EAC
1	UNDERGROUND ELECTRIC ADD	12/19/23	EAC

MARK: #14513  
 REVISION: #14513  
 Scale: #14513  
 Date: 6/11/2024 5:03 PM  
 U-2

14513  
 MADISON, WI  
 CONTRACT NO: 9277

UTILITIES PLAN & PROFILE - E MIFFLIN STREET  
 611 E DAYTON STREET

M:\DESIGN\Projects\14513\CAD\Severs\14513SWR-PipeNetwork.dwg

14513  
 U-2

# SANITARY SEWER SCHEDULE

φ  
X

REVISION 2 - 2/14/2024 EAC  
REVISION 3 - 5/15/2024 EAC

611 EAST DAYTON STREET  
PROJECT NO. 14513

SHEET NO.  
U-3

SANITARY SEWER SCHEDULE

CITY OF MADISON

## PROPOSED SANITARY STRUCTURES

SAS NO.	STATION	LOCATION (OFFSET)	TOP OF CASTING	E.I.	DEPTH	NOTES
<b>EAST DAYTON STREET</b>						
φ X SAS #1	10+28.02'	LT-31.32	850.38	<b>844.62</b>	<b>5.76</b>	[1] [2] <b>[3] [4] [5]</b>

## SANITARY SEWER ULOS

ULO NO.	STATION	LOCATION (OFFSET)	TYPE	TOP ELEV.	NOTES
<b>EAST DAYTON STREET</b>					
φ ULO4-W	10+28.02'	LT-23.91	8" DI WATER MAIN	<b>844.04</b>	<b>NO CONFLICT, &gt;18" BELOW - 8" WAT, TOP @ 844.04'</b>

## SPECIFIC NOTES

- [1] CONNECT STRUCTURE TO EXISTING 10" PVC SANITARY SEWER MAIN. TAP STRUCTURE ON THE UPSTREAM CONNECTION.
- [2] INSTALL EXTERNAL SAS WRAP IN CONFORMANCE WITH SDD 5.7.2.
- [3] TAP NEW LATERAL CONNECTION TO PROPOSED DEVELOPMENT (EI(SE) = 844.72) AND PLUG ORIGINAL PRE-FABRICATED LATERAL CORE (EI(SE) = 846.52).
- [4] MAINTAIN 2" MINIMUM WALL SEPARATION B/W ORIGINAL CORE TO BE PLUGGED AND NEW LATERAL TAP.
- [5] RECONSTRUCT BENCH AND FLOWLINE.



# STORM SEWER SCHEDULE

● REVISION 1 - 12/19/2023 EAC  
 φ REVISION 2 - 2/14/2024 EAC  
 + REVISION 4 - 6/12/2024 EAC

611 EAST DAYTON STREET  
 PROJECT NO. 14513

SHEET NO.  
 U-4

STORM SEWER SCHEDULE

CITY OF MADISON

## PROPOSED STORM STRUCTURES

## PROPOSED STORM PIPES

STRUC. NO.	STATION	LOCATION (OFFSET)	TYPE	TOP OF CASTING	E.I.	DEPTH	NOTES	PIPE NO.	FROM (DNSTM)	TO (UPSTM)	DISCH. E.I.	INLET E.I.	PLAN (PAY) LGTH (FT)	PIPE LGTH (FT)	SLOPE (%)	PIPE SIZE	TYPE	NOTES
<b>EAST MIFFLIN STREET</b>								<b>EAST MIFFLIN STREET</b>										
+ S1	20+38.48'	RT-49.63	3X3 SAS	850.78	846.49	4.29	W/R-3067-7004-V; [1]	+ P1	S1	S2	847.13	847.30	35	33	0.52%	12"	PVC C-900	NCM
+ S2	20+38.45'	RT-14.86	H-INLET	850.75	847.30	3.45	W/R-3067-7004-V											

## STORM SEWER ULOs

ULO NO.	STATION	LOCATION (OFFSET)	TYPE	TOP ELEV.	NOTES
<b>EAST MIFFLIN STREET</b>					
φ ULO1-W	20+38.46'	RT-18.74	20" DI WATER MAIN	844.51	NO CONFLICT, >18" BELOW - 20" WAT, TOP @ 844.51'
φ ULO2-G	20+38.49'	RT-11.96	GAS	848.33	[2]; COORDINATE WITH MG&E, <18" ABOVE - GAS (UNKNOWN DIA), TOP @ 848.33'
φ ULO3-G	20+95.91'	RT-11.71	GAS	847.69	[2]; COORDINATE WITH MG&E, <18" ABOVE - GAS (UNKNOWN DIA), TOP @ 847.69'
● ULO5-E	20+38.45'	RT-24.93	ELECTRIC	--	[3]
φ ULO6-FO	20+38.60'	RT-5.97	FIBER OPTIC	846.58	[4]; COORDINATE WITH UTILITY, ASSUMED TO BE <18" BELOW - FIBER OPTIC (UNKNOWN DIA), TOP @ 846.58
φ ULO7-FO	20+91.29'	RT-5.72	FIBER OPTIC	846.23	[4]; COORDINATE WITH UTILITY, ASSUMED TO BE <18" BELOW - FIBER OPTIC (UNKNOWN DIA), TOP @ 846.23
+ ULO8-E	20+38.46'	RT-45.28	ELECTRIC DUCT PACKAGE	847.03	[5]

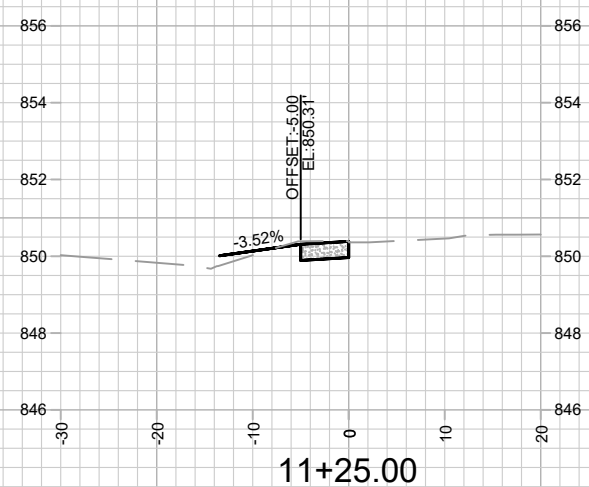
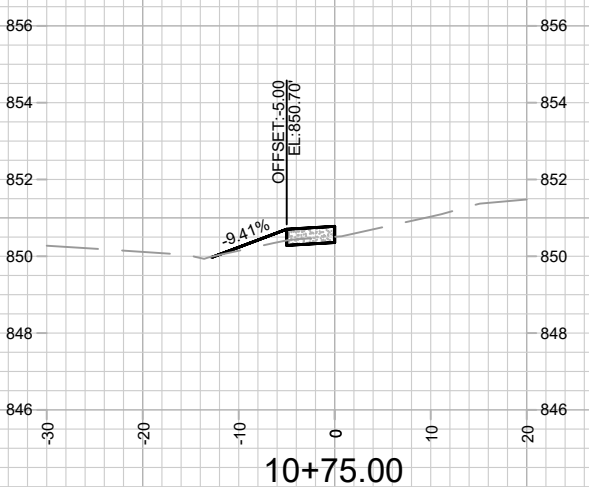
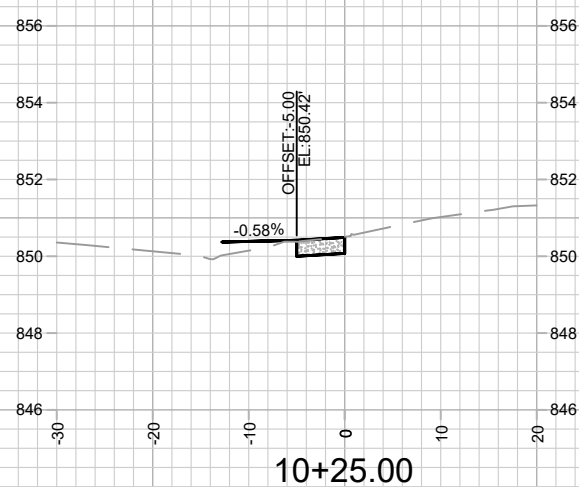
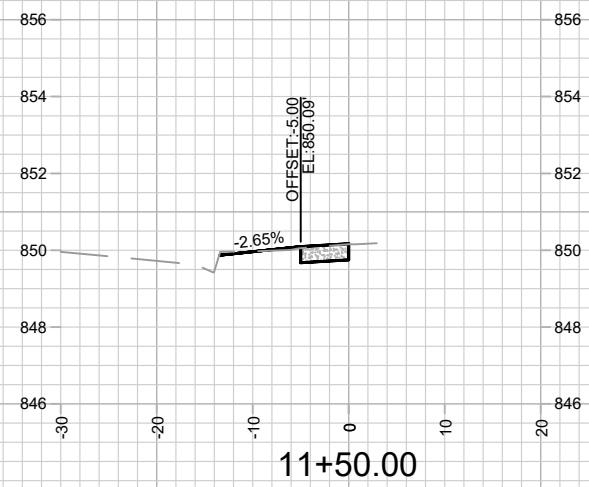
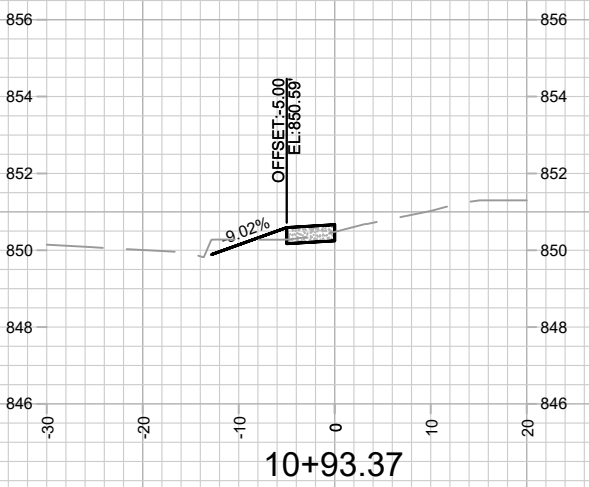
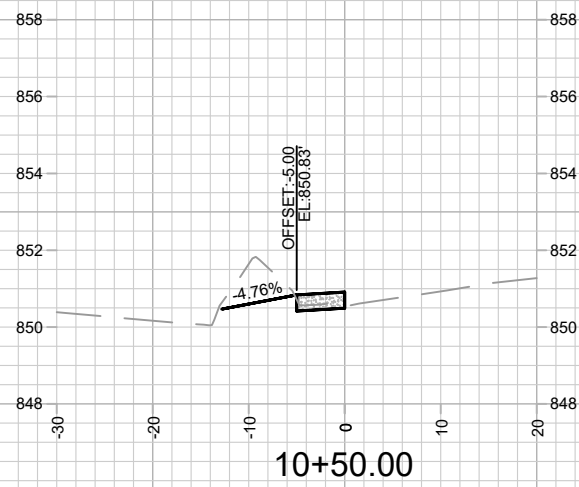
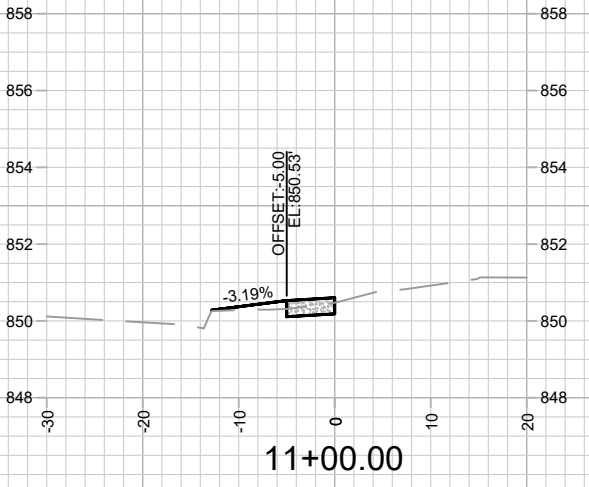
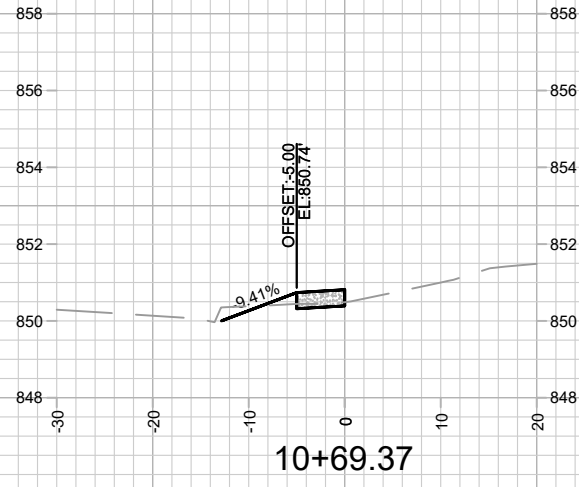
## SPECIFIC NOTES

- [1] CONNECT STRUCTURE TO EXISTING 24" RCP STORM SEWER MAIN
- [2] ALSO LOCATE EXISTING FIBER OPTIC FOR PROPOSED DEVELOPMENT'S PRIVATE STORM CONNECTIONS
- [3] LOCATION OF UNDERGROUND ELECTRIC ON EAST MIFFLIN ST IS APPROXIMATE - LOCATE IN FIELD
- φ [4] LOCATED WITH GAS ULOS - SEE NOTE 2
- + [5] PLAN LOCATION OF DUCT PACKAGE APPROXIMATE. DUCT PACKAGE WAS LOCATED IN FIELD.

**NOTE:** PLAN LENGTH (PAY LENGTH) IS FROM CENTER OF STRUCTURE TO CENTER OF STRUCTURE. PIPE LENGTH IS ACTUAL LENGTH OF PIPE FROM STRUCTURE WALL TO STRUCTURE WALL. SLOPE CALCULATED USING PIPE LENGTH.

## STANDARD NOTES:

- ABBREVIATIONS: AE = APRON ENDWALL; RCP = REINFORCED CONCRETE PIPE; HERCP = HORIZONTAL ELLIPTICAL REINFORCED CONCRETE PIPE; DNA = DOES NOT APPLY; SAS = SEWER ACCESS STRUCTURE; LP = LOW POINT INLET STRUCTURE; FP = FIELD POURED STRUCTURE; TR = TOP OF CONCRETE ROOF; NCM = NO CROWN MATCH FOR PIPES; UD = UNDERDRAIN
- TOP OF CASTING GRADE GIVEN IS THE TOP OF CURB FOR INLET STRUCTURES AND THE FLOWLINE OF THE CLOSED CASTING FOR SASs.
- TOP OF CONCRETE ROOF (TR) IS 1.25 BELOW TOP OF CASTING UNLESS OTHERWISE NOTED.
- ALL REINFORCED CONCRETE PIPES TO BE CLASS III UNLESS OTHERWISE NOTED.
- SURVEYOR TO CONFIRM THAT ALL INLET STATION / OFFSETS LINE UP WITH PROPOSED CURB AND GUTTER.
- ALL REBAR FOR FIELD POUR STRUCTURES SHALL BE EPOXY COATED. ANY EXPOSED STEEL SHALL BE TOUCHED UP OR RECOATED PRIOR TO USE.
- ALL FIELD POURED SAS STORM STRUCTURES SHALL BE CONSTRUCTED IN ACCORDANCE WITH STANDARD DETAIL DRAWING 5.7.3.
- ALL PRECAST SAS STORM STRUCTURES SHALL BE CONSTRUCTED IN ACCORDANCE WITH STANDARD DETAIL DRAWING 5.7.5.
- ALL STRUCTURES CALLED OUT AS FIELD POURED SHALL BE FIELD POURED. ALL OTHER STRUCTURES (NOT INDICATED AS FIELD POURED) SHALL BE SUBMITTED TO CITY ENGINEERING FOR APPROVAL IF PRECAST STRUCTURES ARE PREFERRED. CONTACT ERIC CEFALU OF CITY ENGINEERING AT (608) 243-5894 FOR PRECAST APPROVALS, FAX SHOP DRAWINGS TO (608)264-9275, OR EMAIL SHOP DRAWINGS TO ECEFALU@CITYOFMADISON.COM.



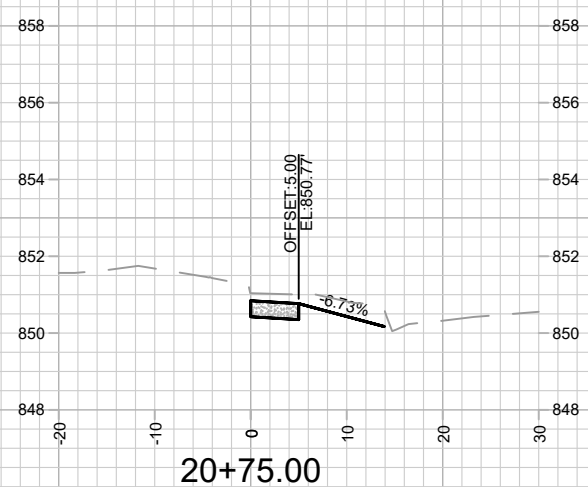
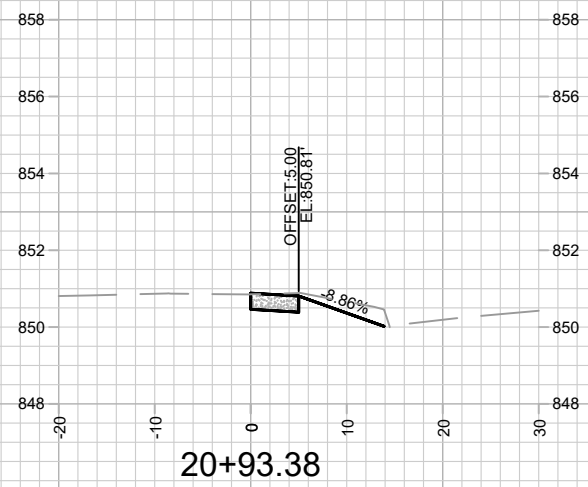
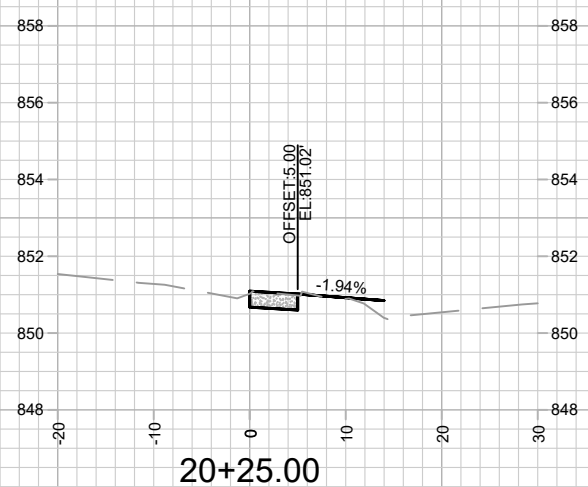
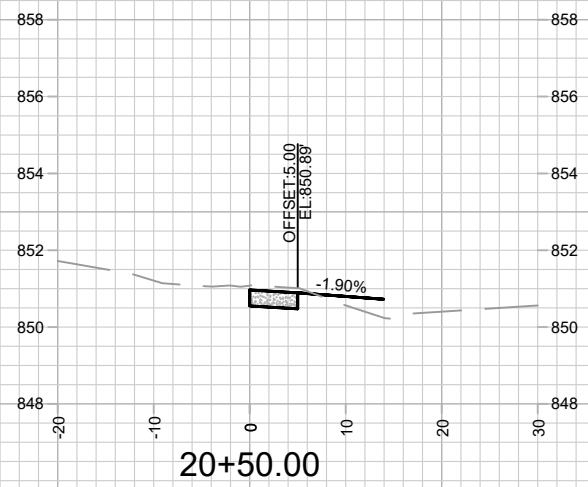
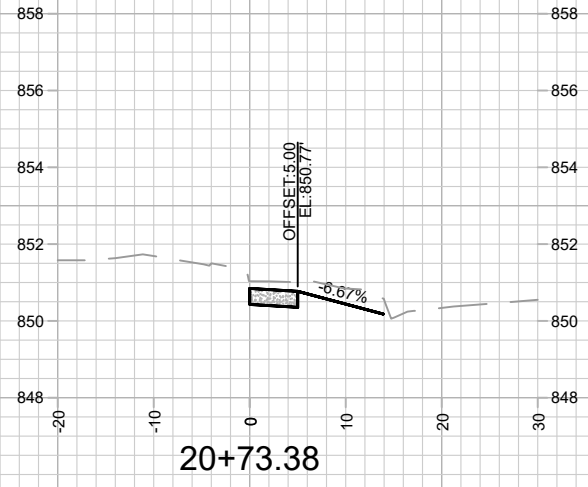
MARK	REVISION	DATE	BY
14513	4/17/2023	12:27 PM	Scale: #####
Designed By: FBEG			X-1

14513  
MADISON, WI  
9277  
CONTRACT NO:

CROSS SECTIONS - E DAYTON ST  
611 E DAYTON STREET  
M:\DESIGN\Projects\14513\CAD\Streets\14513EN-Xsections.dwg



14513  
X-1



MARK	REVISION	DATE	BY
Designed By: FBEG	Date: 4/16/2023	12:27 PM	Scale: #####
14513	9277		X-2

14513  
 MADISON, WI  
 CONTRACT NO: 9277



14513  
 X-2

CROSS SECTIONS - E MIFFLIN ST  
 611 E DAYTON STREET  
 M:\DESIGN\Projects\14513\CAD\Streets\14513EN-Xsections.dwg