

Madison, Wisconsin

CITY OF MADISON

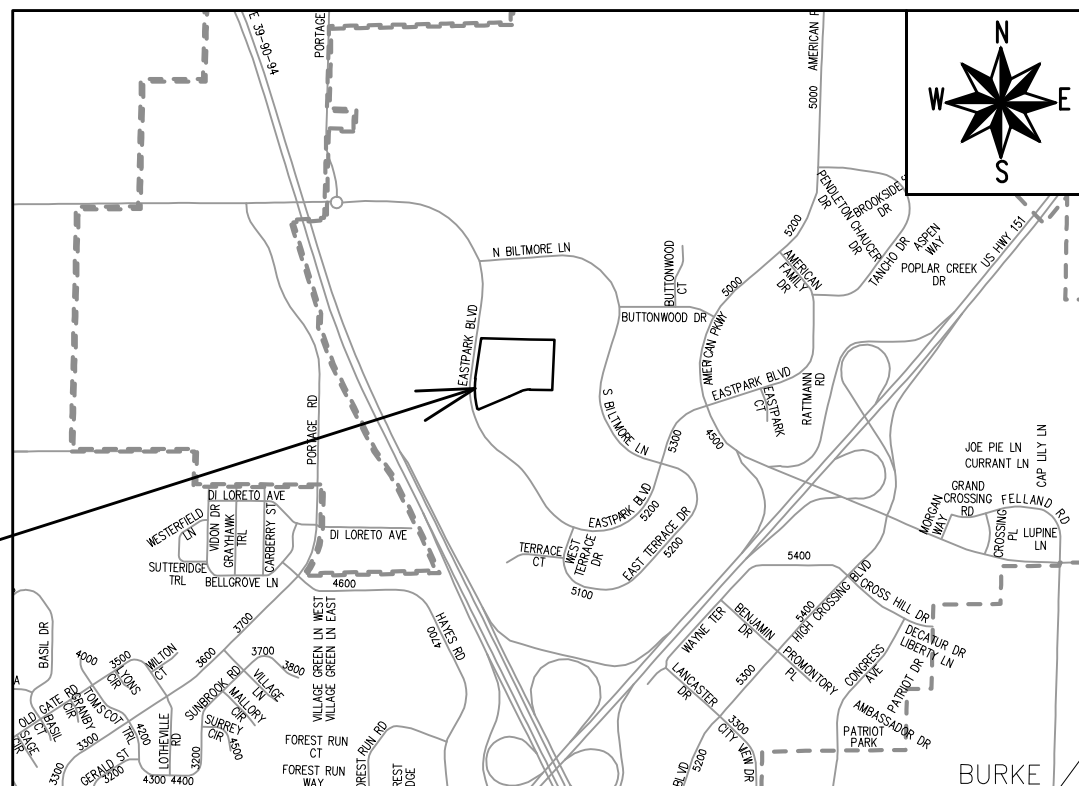
CITY ENGINEERING DIVISION

DEPARTMENT OF PUBLIC WORKS

PLAN OF PROPOSED IMPROVEMENT

THE AMERICAN CENTER PLAT EASTPARK FIFTH ADDITION - PHASE 1

CITY PROJECT NO. 14548
CONTRACT NO. 9291



**PROJECT
LOCATION**

INDEX OF SHEETS

SHEET NO. D1	STANDARD NOTES
SHEET NO. D2	TYPICAL SECTIONS
SHEET NO. D3	STORMWATER MANAGEMENT FACILITY DETAILS
SHEET NO. D4	TERRACE EXCAVATION DETAIL
SHEET NO. O1	OVERVIEW PLAN
SHEET NO. P1-P3	PLAN & PROFILES
SHEET NO. U1-U3	UTILITY PLAN & PROFILES
SHEET NO. U-SAN	SANITARY SEWER SCHEDULE
SHEET NO. U-STM	STORM SEWER SCHEDULE
SHEET NO. W1-W2	WATER PLAN & PROFILE
SHEET NO. W3	WATER IMPACT PLAN
SHEET NO. W4	WATER ESTIMATE OF MATERIALS
SHEET NO. E1-E2	ELECTRICAL PLAN
SHEET NO. M1-M2	MARKING PLAN
SHEET NO. X1-X4	CROSS SECTIONS
SHEET NO. MN1	MAINTENANCE PLAN (CITY USE ONLY)

PUBLIC IMPROVEMENT PROJECT APPROVED

MAY 5, 2022

BY THE COMMON COUNCIL OF MADISON, WISCONSIN

PUBLIC IMPROVEMENT DESIGN APPROVED BY:

Aug 30, 2024

City Engineer

Date

ELECTRICAL DESIGNED BY:



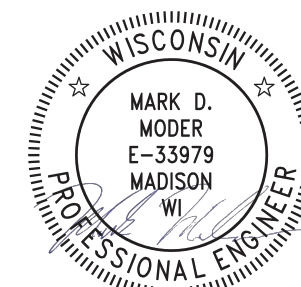
Aug 30, 2024

STREET GRADES DESIGNED BY:



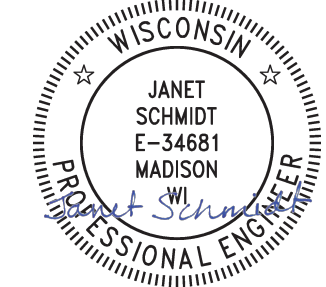
Aug 30, 2024

SANITARY SEWER DESIGNED BY:



Sep 3, 2024

STORM SEWER DESIGNED BY:



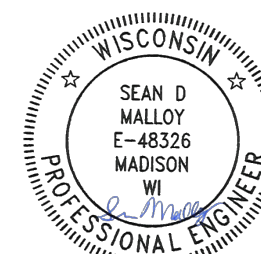
Aug 30, 2024

STORM WATER MANAGEMENT DETAILS DESIGNED BY:



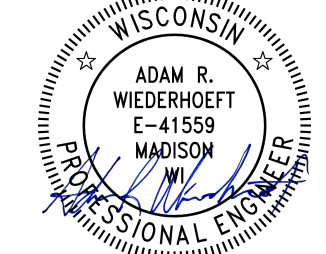
Aug 30, 2024

STREET GEOMETRICS & PAVEMENT MARKINGS DESIGNED BY:



Aug 30, 2024

WATER DESIGNED BY:



Aug 30, 2024

REVISION 1 - 10/21/2024
- REVISED SHEETS: U1-U2, USTM

PLOT SCALE: 1 IN=1 FT_XREF

PLOT NAME: ---

REV. DATE: 8/30/2024 9:08 AM

ORIGINATOR: CITY_OF_MADISON

NO TREES IN THE RIGHT OF WAY OR ON PUBLIC LANDS SHALL BE TRIMMED, PRUNED, REMOVED OR ADVERSELY AFFECTED IN ANY WAY UNTIL THE DEVELOPER HAS RECEIVED WRITTEN PERMISSION FROM THE CITY ENGINEER OR CITY FORESTER. SAID WRITTEN PERMISSION SHALL INCLUDE LANGUAGE INDICATING THAT SECTION 10.101 OF THE MADISON GENERAL ORDINANCES AND ADMINISTRATIVE PROCEDURE MEMORANDUM NO. 6-2, REFERRING TO NOTIFICATION OF PROPERTY OCCUPANTS AND/OR OWNERS, HAS BEEN COMPLIED WITH.

DEVELOPER MUST SUBMIT A TRAFFIC CONTROL PLAN TO CITY TRAFFIC ENGINEERING AT LEAST 14 DAYS PRIOR TO THE START OF WORK. WORK SHALL NOT PROCEED UNTIL AN APPROVED TRAFFIC CONTROL PLAN IS IN PLACE.

CONTACT THE PROJECT ENGINEER AND DESIGNER, NASHALY GUTIERREZ VAZQUEZ, AT NGUTIERREZ@CITYOFMADISON.COM FOR CAD FILES AND ALIGNMENT DATA PRIOR TO STAKING.

ALL PAVEMENT IN THE LUMINOUS LANE RIGHTS-OF-WAY SHALL BE TYPE A PAVEMENT PER STANDARD DETAIL DRAWING 4.02.

ALL PAVEMENT IN THE EASTPARK BOULEVARD RIGHTS-OF-WAY SHALL BE 9" CONCRETE PAVEMENT PER STANDARD DETAIL DRAWING 3.10.

SPEED HUMP PER STANDARD DETAIL DRAWING 4.10.

UNDERDRAINS SHALL BE INSTALLED PER STANDARD DETAIL DRAWING 4.05 FOR 75' ON EACH SIDE OF THE LOW POINT, OR TO THE NEAREST CURB HIGH POINT. ALL UNDERDRAIN SHALL BE WRAPPED.

ALL GUTTERS SHALL DRAIN WITH A MINIMUM GRADE OF 0.5% TOWARD STORM SEWER INLETS.

ALL DITCHES SHALL DRAIN WITH A MINIMUM GRADE OF 0.5%

THE CROSS SLOPE OF SIDEWALKS AND BARRIER FREE SIDEWALK CURB RAMPS SHALL TYPICALLY BE 1.5%. THE LONGITUDINAL GRADE OF BARRIER FREE SIDEWALK CURB RAMPS SHALL NOT EXCEED 8.33%. ALL SIDEWALK RAMPS SHALL BE CONSTRUCTED ACCORDING TO S.D.D. 3.04. AT ALL OTHER LOCATIONS THE LONGITUDINAL GRADE OF SIDEWALKS SHALL NOT EXCEED 5.0 % OR THE ADJACENT STREET GRADE WHICHEVER IS GREATER NOR BE LESS THAN 0.5% AND SHALL DRAIN TOWARD STORM SEWER INLETS. SIDE SLOPES WITHIN TEN FEET OF A PUBLIC SIDEWALK SHALL NOT EXCEED 4:1. ALL SIDEWALK AND SIDEWALK RAMP ELEVATIONS AND GRADES SHALL BE FIELD VERIFIED AND SET TO COMPLY WITH THE CITY OF MADISON STANDARD SPECIFICATIONS AND THE A.D.A. GUIDELINES.

CURB STATION AND OFFSETS SHALL BE TO THE EDGE OF PAVEMENT UNLESS OTHERWISE INDICATED. CURB ELEVATIONS SHALL BE TO THE EDGE OF PAVEMENT UNLESS OTHERWISE INDICATED.

POWER POLES AND OTHER OBSTRUCTIONS SHALL BE MOVED TO PROVIDE 2 FEET MINIMUM OF CLEAR DISTANCE FROM ANY FACE OF CURB OR EDGE OF SIDEWALK UNLESS OTHERWISE INDICATED ON THE PLANS.

ANY INFORMATION SHOWN ON THIS PLAN, WHICH IS NOT PART OF THIS RIGHT-OF-WAY PROJECT, IS PRELIMINARY AND NOT FOR CONSTRUCTION.

THERE MAY BE EXISTING UTILITIES OR OTHER FEATURES WHICH ARE EITHER NOT SHOWN OR SHOWN INCORRECTLY ON THIS PLAN. IT IS THE RESPONSIBILITY OF THE DEVELOPER TO LOCATE AND IDENTIFY ALL UTILITIES AND TOPOGRAPHY WHICH MAY AFFECT THE CONSTRUCTION OF THESE IMPROVEMENTS.

ALL PERMANENT SIGNING AND POSTING WILL BE DETERMINED AND PROVIDED BY THE TRAFFIC ENGINEERING DIVISION, FOLLOWING CONSTRUCTION OF THESE IMPROVEMENTS.

THE DEVELOPER SHALL PROVIDE, INSTALL AND MAINTAIN ALL STREET END BARRICADES, SIGNING AND TRAFFIC CONTROL, AS REQUIRED BY THE CITY TRAFFIC ENGINEER.

PAVEMENT SAWCUTS SHALL BE AS DIRECTED BY THE CITY CONSTRUCTION ENGINEER. SAWCUTS SHOWN ON THE PLAN ARE APPROXIMATE.

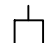
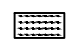

CURB ON CUL DE SACS SHALL BE INSTALLED ACCORDING TO S.D.D 3.05.


ALL WORK IN THE RIGHT OF WAY AND PUBLIC EASEMENTS SHALL BE IN ACCORDANCE WITH THE CITY OF MADISON STANDARD SPECIFICATIONS FOR PUBLIC WORKS CONSTRUCTION LATEST EDITION.

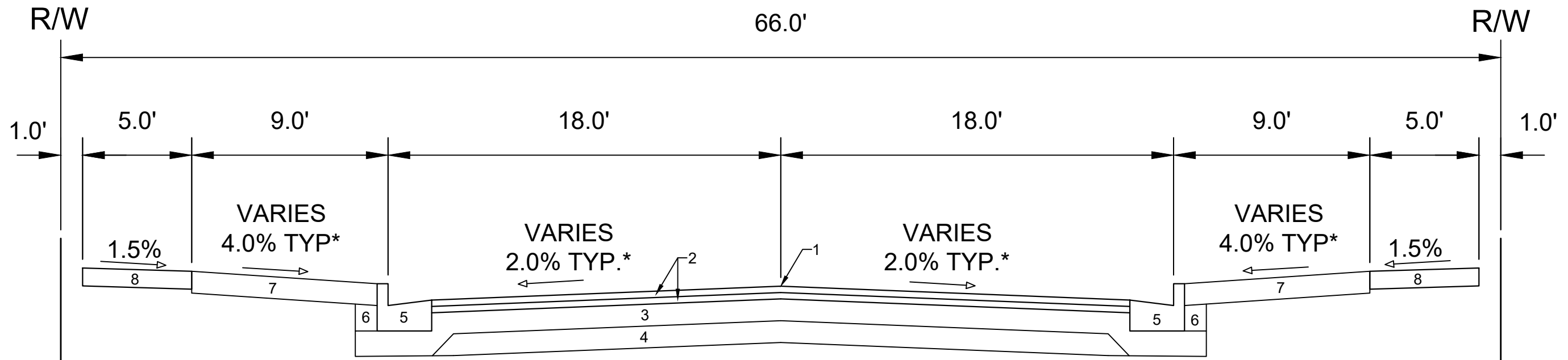
ALL PROPOSED IMPROVEMENTS IN THE RIGHT-OF-WAY ARE BASED ON SURVEY DATA PROVIDED BY THE DEVELOPER OR ITS CONSULTANT. IN THE CASE THAT THE PROPOSED IMPROVEMENTS CAN NOT BE INSTALLED PER THESE PLANS OR THE CITY OF MADISON STANDARD SPECIFICATION FOR PUBLIC WORKS CONSTRUCTION, LATEST EDITION, THE DEVELOPER SHALL BE RESPONSIBLE FOR THE COST OF EXTRA WORK DUE TO INACCURACIES OF THE SURVEY.

ALL UTILITY VERIFICATIONS AND ACCURACY OF THE DRAWINGS ARE THE RESPONSIBILITY OF THE DEVELOPER. ANY CONFLICTS THAT ARISE FROM MISSING OR ERRONEOUS INFORMATION WILL BE AT THE EXPENSE OF THE DEVELOPER. NO PRECAST STRUCTURES WILL BE APPROVED FOR STORM OR SANITARY SEWER UNTIL ALL POTENTIAL UTILITY CONFLICTS ARE RESOLVED.

CONVENTIONAL SIGNS
FIELD VERIFY ALL UTILITY LOCATIONS

GAS	—— G ——
STORM SEWER	—— ST ——
SANITARY SEWER	—— SAN ——
WATER	—— W ——
BURIED ELECTRIC	—— E ——
OVERHEAD ELECTRIC	—— OH ——
POWER POLE	
ADA COMPLIANT RAMP W/ DETECTABLE WARNING FIELD	
COMBUSTIBLE FLUIDS	

14548	MADISON, WI	9291	D-1		
STANDARD NOTES		CONTRACT NO:		14548	D-1
THE AMERICAN CENTER EASTPARK FIFTH ADDITION					
M:\DESIGN\Projects\14548\CAD\Streets\14548EN-Details.dwg					
					
14548					
D-1					

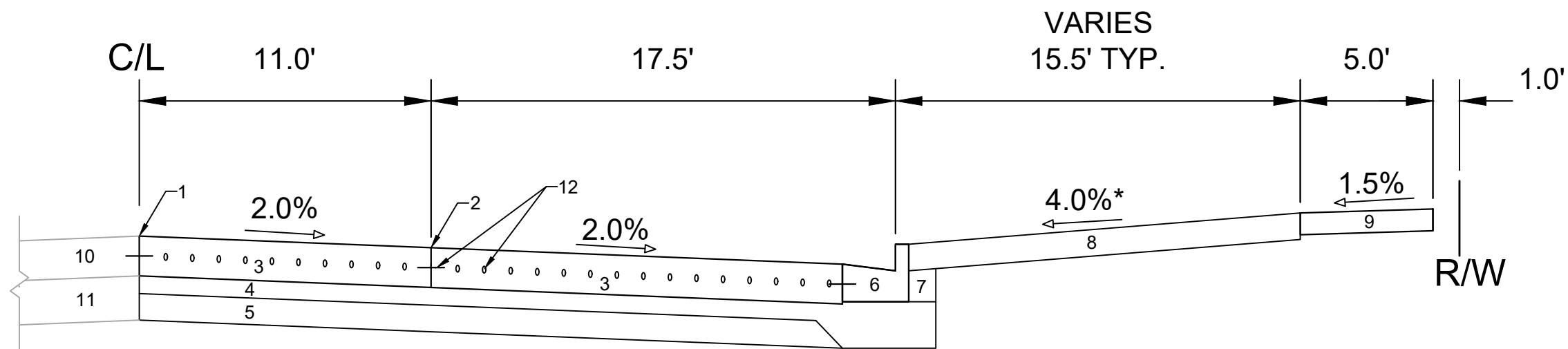


TYPICAL SECTION
LUMINOUS LANE

- 1 POINT REFERRED TO ON PROFILE
- 2 1.75" H.M.A. PAVEMENT- TYPE 4 LT 58-28 S
- 3 6" CRUSHED AGGREGATE BASE COURSE GRADATION 2
- 4 6" CRUSHED AGGREGATE BASE COURSE GRADATION 1
- 5 CONCRETE CURB AND GUTTER TYPE 'A'.
- 6 FILL
- 7 6" TOPSOIL, SEED AND MATTING
- 8 5" CONCRETE SIDEWALK

SPECIAL NOTES:

*SEE P & X SHEETS FOR CROSS SLOPES



TYPICAL SECTION
EASTPARK BOULEVARD

- 1 POINT REFERRED TO ON PROFILE
- 2 CONCRETE LONGITUDINAL JOINTS
- 3 9" CONCRETE PAVEMENT
- 4 4" CRUSHED AGGREGATE BASE COURSE GRADATION 2
- 5 6" CRUSHED AGGREGATE BASE COURSE GRADATION 1
- 6 CONCRETE CURB & GUTTER TYPE 'A'
- 7 FILL
- 8 6" TOPSOIL, SEED, AND MATTING
- 9 5" CONCRETE SIDEWALK
- 10 EX. CONCRETE PAVEMENT TO REMAIN
- 11 EX. BASE COURSE TO REMAIN
- 12 TIE AND DOWEL BARS*

SPECIAL NOTES:

*SEE STANDARD DETAIL DRAWINGS 3.10 AND 3.11 FOR PLACEMENT SPECIFICATIONS

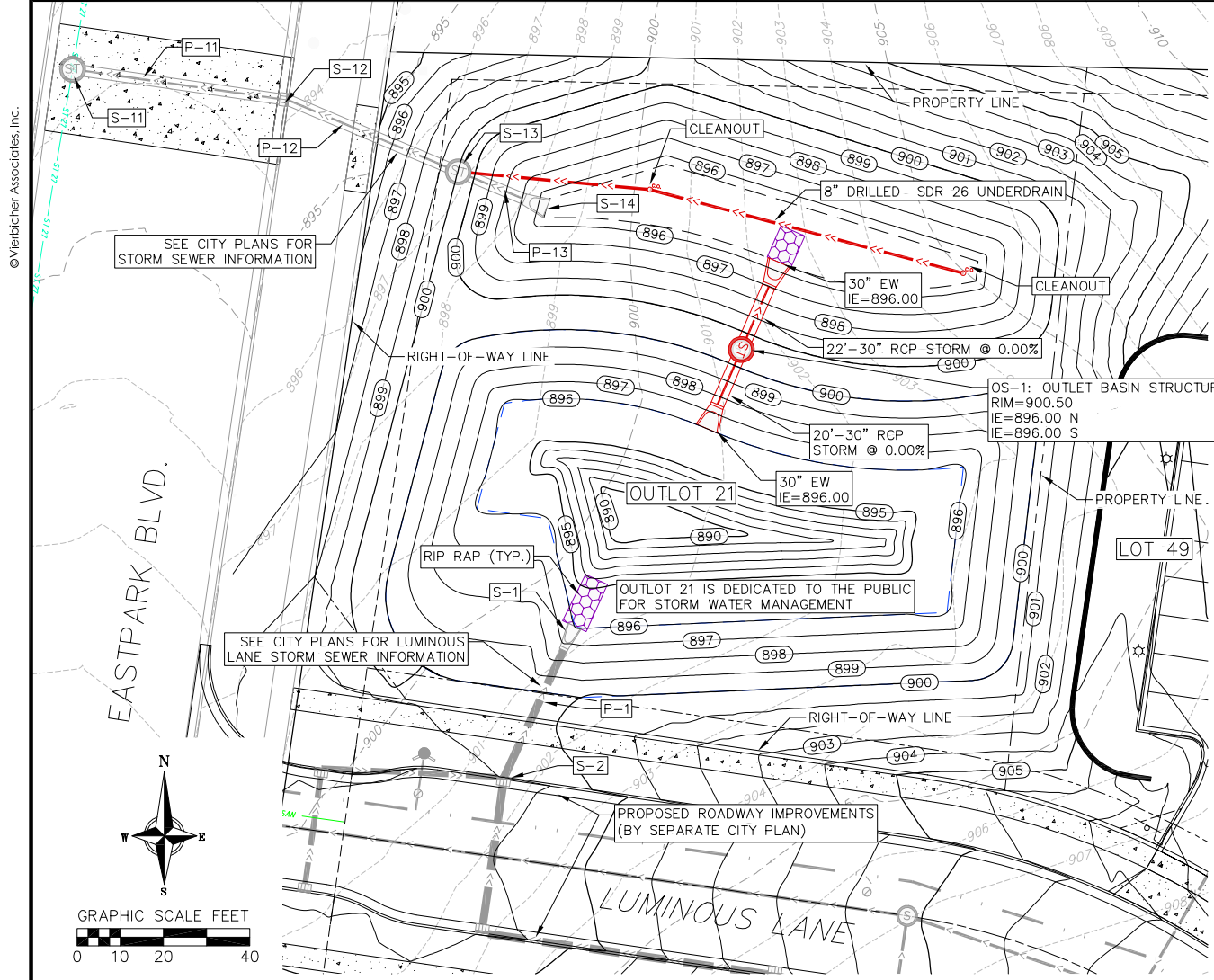
DATE	BY
REVISION	
Designed By: NGV	Date: 8/29/2024 3:16 PM
Scale:	
14548	D-2

14548
MADISON, WI
9291
CONTRACT NO:

TYPICAL SECTIONS
THE AMERICAN CENTER EASTPARK FIFTH ADDITION
M:\DESIGN\Projects\14548\CAD\Streets\14548EN-Details.dwg



14548
D-2



INFILTRATION AREA SPECIFICATIONS:
INFILTRATION AREA MUST CONFORM TO WISCONSIN DNR TECHNICAL STANDARD 1003 (INFILTRATION BASIN).

HEAVY EQUIPMENT SHALL NOT BE ALLOWED ON AREA OF INFILTRATION DURING CONSTRUCTION OPERATIONS. INFILTRATION AREA MUST NOT BE CONSTRUCTED (INSTALLED) UNTIL THE SITE IS STABILIZED, I.E. THE GRASS COVER IS WELL ESTABLISHED; OTHERWISE, CONSTRUCTION SITE RUNOFF FROM DISTURBED AREAS SHALL BE DIVERTED AWAY FROM INFILTRATION DEVICE. DO NOT ALLOW SURROUNDING SOILS TO ERODE INTO BASINS ONCE ENGINEERED SOIL AND PLANTINGS HAVE BEEN INSTALLED.

SEED MIX AS SPECIFIED ON THIS PAGE. IF TREES ARE TO BE USED, SPECIES SHALL BE SELECTED THAT WILL NOT INTERFERE WITH THE FUNCTION OF THE BASIN, OR CAUSE MAINTENANCE PROBLEMS.

CONTRACTOR IS RESPONSIBLE FOR PREPARING VEGETATION PLAN, ENSURING PLANT ESTABLISHMENT, INITIAL MAINTENANCE (SEE BELOW), AS WELL AS MAINTAINING PROPER INFILTRATION RATES OVER INFILTRATIVE SURFACE (I.E. NO PONDING WATER 24 HOURS AFTER RAIN EVENT) THROUGHOUT WARRANTY PERIOD AND ONE COMPLETE GROWING SEASON, OR UNTIL ACCEPTANCE BY THE OWNER (WHICHEVER IS SOONER).

RESTORATION AND INITIAL MAINTENANCE NOTES (DURING FIRST GROWING SEASON):

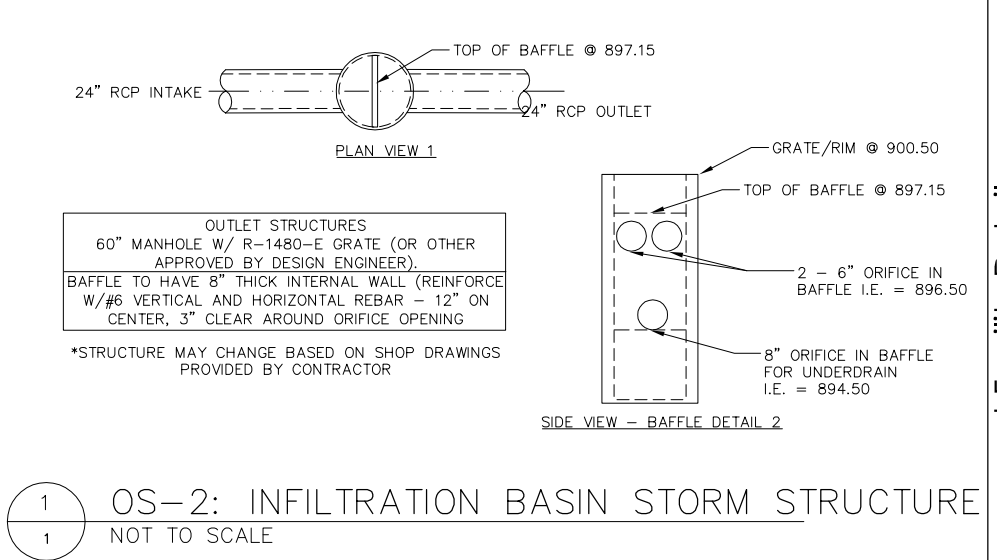
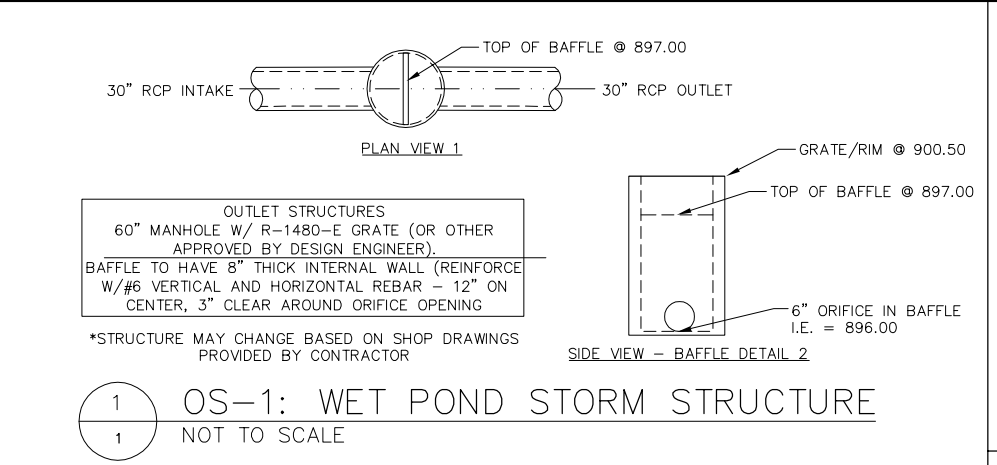
- NATIVE (PRAIRIE) SEEDING SHALL BE COMPLETED IN THE FALL (AS DORMANT SEEDING PRIOR TO FIRST SNOWFALL) OR IN THE SPRING (BETWEEN MAY 1 AND JUNE 20), OR PLUGS SHALL BE USED.
- FERTILIZER -SOIL TESTING SHALL BE USED TO DETERMINE PROPER APPLICATIONS FOR NUTRIENTS AND LIMING. FERTILIZER APPLICATION SHALL CONFORM TO THE CRITERIA LOCATED IN NRCS CONSERVATION PRACTICE STANDARD, CRITICAL AREA PLANTING (342) OR WDNR TECHNICAL STANDARD SEEDING FOR CONSTRUCTION SITE EROSION CONTROL (1059).
- MULCH OR EROSION MAT -MULCH SHALL CONFORM TO THE CRITERIA LOCATED IN WDNR TECHNICAL STANDARD MULCHING FOR CONSTRUCTION SITES (1058). EROSION MAT SHALL BE CLASS 1, TYPE A URBAN AND PLACED ON THE SURFACE OF THE INFILTRATION AREA.
- WATER AS NECESSARY, DEPENDING ON WEATHER, RE-MULCH VOID AREAS, TREAT DISEASED OR DISTRESSED PLANTS, SPOT TREAT THE AREA WITH HERBICIDE TO REMOVE WEEDS, REMOVE DEBRIS AND LITTER, AND INSPECT AND REPAIR ERODED AREAS, AS NEEDED.

CONSTRUCTION NOTES (NOT INCLUDING SIDESLOPES):

- OVER-EXCAVATE THE AREA TO INFILTRATIVE LAYER REQUIRED PER DETAIL. NATIVE LAYER OF DEVICE TO BE VISUALLY INSPECTED BY DESIGN ENGINEER IN THE FIELD AFTER THE AREA IS EXCAVATED.
- CHISEL PLOW, OR ROTO-TILL THE BASE OF THE AREA TO BREAK UP ANY HARDPAN IN THE NATIVE SOIL LAYER.
- PLACE GRANULAR FILL, DEPTH AS REQUIRED BY DETAIL, AND UNDERDRAIN COMPONENTS.
- PLACE ENGINEERED SOIL IN MAXIMUM 12" LIFTS (OVERFILL BY 2" TO ALLOW FOR SETTLING), COMPRISED OF:
70-85% WASHED SAND
15-30% COMPOST (PER DNR TECHNICAL STANDARD S100)
- SEED, MULCH/EROSION MAT, WATER, AND MAINTAIN AS DIRECTED ABOVE. LEAVE UNDERDRAIN DRAWDOWN OPEN UNTIL PLANT ESTABLISHMENT.

LONG-TERM MAINTENANCE OF INFILTRATION AREA:

- REFER TO DNR TECHNICAL STANDARD 1003



INFILTRATION BASIN BOTTOM SEED MIX: THE SEED MIX SHALL CONSIST OF ANY OF THE FOLLOWING OR APPROVED EQUAL:

- DETENTION BASIN SEED MIX* AS MANUFACTURED BY PRAIRIE NURSERY, WESTFIELD, WI. SEED SHALL BE PLACED AT A RATE OF 10 LBS PER ACRE.
- DETENTION BASIN SEED MIX* AS MANUFACTURED BY PRAIRIE MOON NURSERY, WINONA, MN. SEED SHALL BE PLACED AT A RATE OF 9.44 LBS PER ACRE.
- RAINWATER RENEWAL MIX* AS MANUFACTURED BY AGRECOL LLC, EVANSVILLE, WI. SEED SHALL BE PLACED AT A RATE OF 8 LBS PER ACRE.
- DETENTION BASIN & RAINGARDEN MIX* AS MANUFACTURED BY SHOOTING STAR NATIVE SEED, SPRING GROVE, MN. SEED SHALL BE PLACED AT A RATE OF 8 LBS PER ACRE.

SUBSTITUTION REQUESTS SHALL BE SUBMITTED TO CITY ENGINEERING FOR REVIEW AND APPROVAL. CONTRACTOR IS NOTIFIED THAT IF AN ALTERNATIVE IS ALLOWED, THE RATE OF SEED MAY BE ALTERED AS A CONDITION OF APPROVAL, AND SEED SHALL BE NATIVE ECOTYPES. NO IMPROVED VARIETIES ARE ALLOWED. SEED SOURCE SHALL BE NATIVE ECOTYPES FROM SOUTHEASTERN MINNESOTA, EASTERN IOWA, SOUTHERN WISCONSIN OR NORTHERN ILLINOIS.

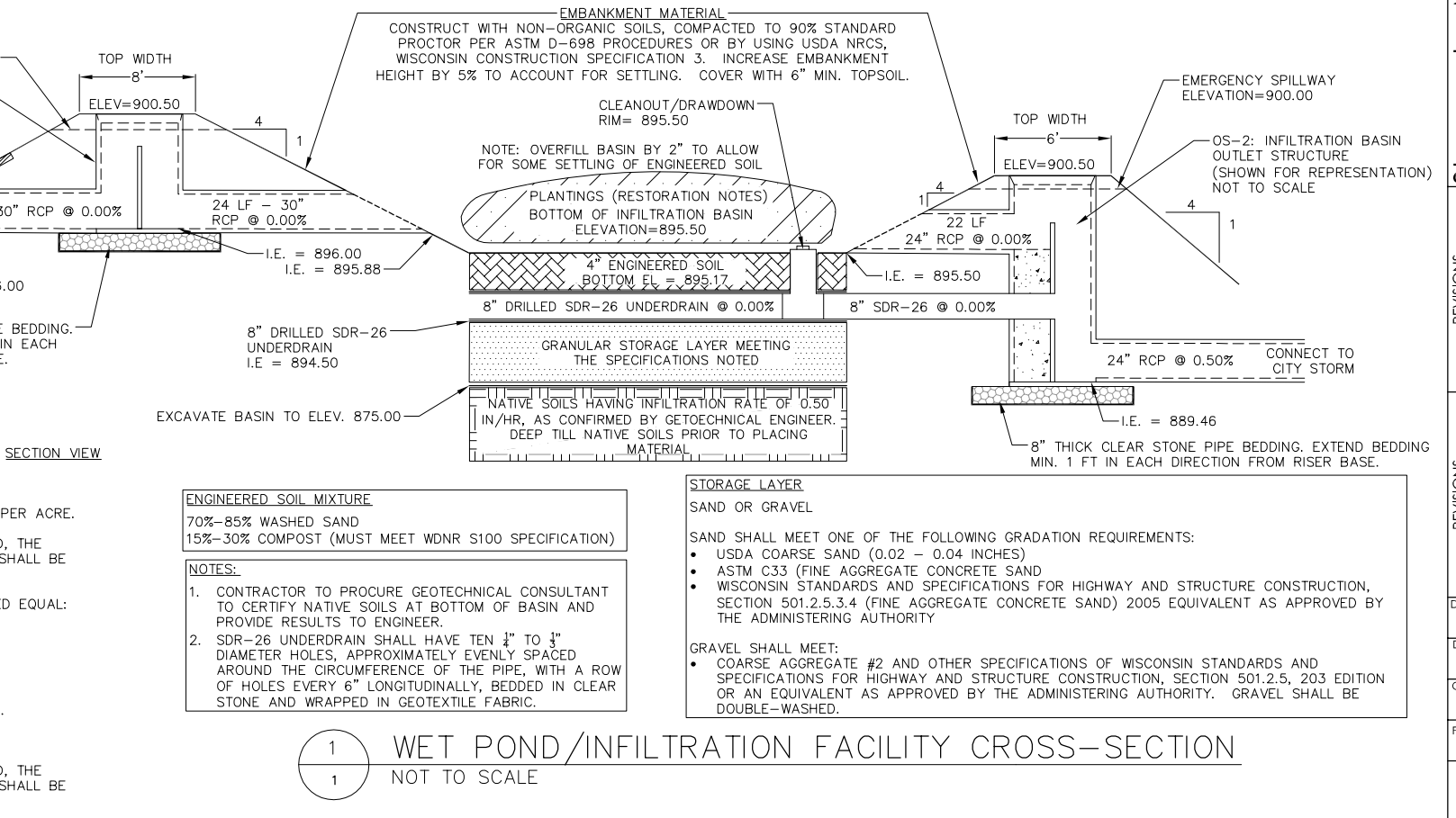
INFILTRATION BASIN AND WET POND SIDE SLOPES AND TALLGRASS PRAIRIE SEED MIX: 85% OF THE SEED MIX SHALL CONSIST OF ANY OF THE FOLLOWING OR APPROVED EQUAL:

- TALL PRAIRIE FOR MEDIUM TO CLAY SOILS* AS MANUFACTURED BY PRAIRIE NURSERY, WESTFIELD, WI. SEED SHALL BE PLACED AT A RATE OF 10 LBS PER ACRE.
- POLLINATOR-PALOOSA SEED MIX* AS MANUFACTURED BY PRAIRIE MOON NURSERY, WINONA, MN. SEED SHALL BE PLACED AT A RATE OF 6.59 LBS PER ACRE.
- TALLGRASS PRAIRIE FOR MEDIUM SOILS* AS MANUFACTURED BY AGRECOL LLC, EVANSVILLE, WI. SEED SHALL BE PLACED AT A RATE OF 13.25 LBS PER ACRE.
- BASIC PRAIRIE MIX* AS MANUFACTURED BY SHOOTING STAR NATIVE SEED, SPRING GROVE, MN. SEED SHALL BE PLACED AT A RATE OF 10 LBS PER ACRE.

15% OF THE SEED MIX SHALL CONSIST OF ANY OF THE FOLLOWING OR APPROVED EQUAL:

- GRAND DIVERSITY PRAIRIE SEED MIX* AS MANUFACTURED BY PRAIRIE MOON NURSERY, WINONA, MN. SEED SHALL BE PLACED AT A RATE OF 13.85 LBS PER ACRE.
- DIVERSE PRAIRIE FOR MEDIUM SOILS* AS MANUFACTURED BY PRAIRIE NURSERY, WESTFIELD, WI. SEED SHALL BE PLACED AT A RATE OF 10 LBS PER ACRE.
- BIRD & BUTTERFLY MIX* AS MANUFACTURED BY AGRECOL LLC, EVANSVILLE, WI. SEED SHALL BE PLACED AT A RATE OF 13 LBS PER ACRE.

SUBSTITUTION REQUESTS SHALL BE SUBMITTED TO CITY ENGINEERING FOR REVIEW AND APPROVAL. CONTRACTOR IS NOTIFIED THAT IF AN ALTERNATIVE IS ALLOWED, THE RATE OF SEED MAY BE ALTERED AS A CONDITION OF APPROVAL, AND SEED SHALL BE NATIVE ECOTYPES. NO IMPROVED VARIETIES ARE ALLOWED. SEED SOURCE SHALL BE NATIVE ECOTYPES FROM SOUTHEASTERN MINNESOTA, EASTERN IOWA, SOUTHERN WISCONSIN OR NORTHERN ILLINOIS.



26 Aug 2024 - 9:35a M:\Cascade Development\210303_4902 Eastpark Blvd\CADD\210303 - Stormwater.dwg by: bbar



Sarah V. Church

vierbicher
planners engineers advisors

Stormwater Management Facility Details
The American Center Plat Eastpark Fifth Addition
City of Madison
Dane County, Wisconsin

NO.	DATE	REVISIONS	REMARKS

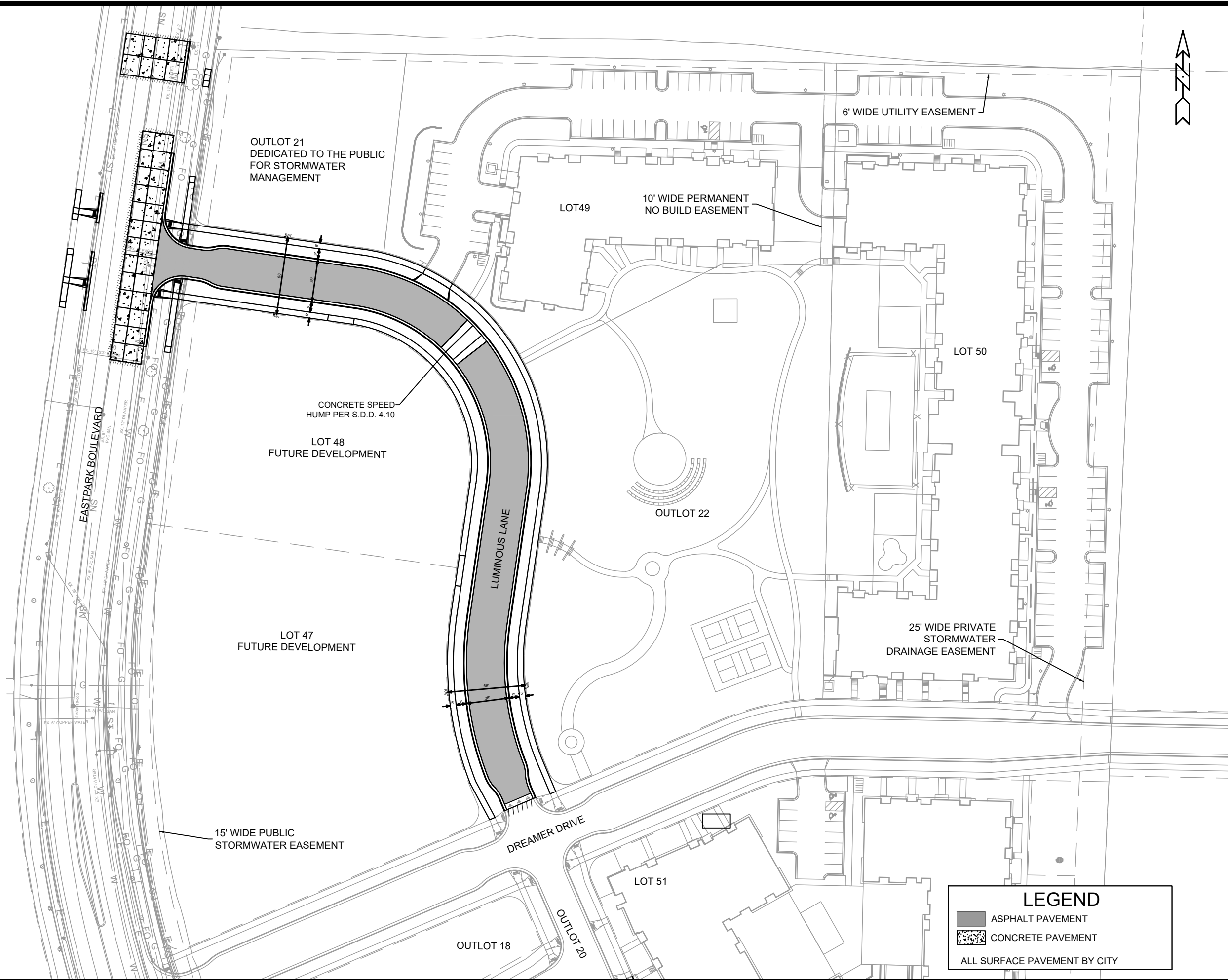
DATE: August 2024

DRAFTER: SCHU

CHECKED: SCHU

PROJECT NO.: 210303

D-3



LEGEND	
	ASPHALT PAVEMENT
	CONCRETE PAVEMENT
ALL SURFACE PAVEMENT BY CITY	

MARK	REVISION	DATE	BY

14548
 MADISON, WI
 CONTRACT NO: 9291

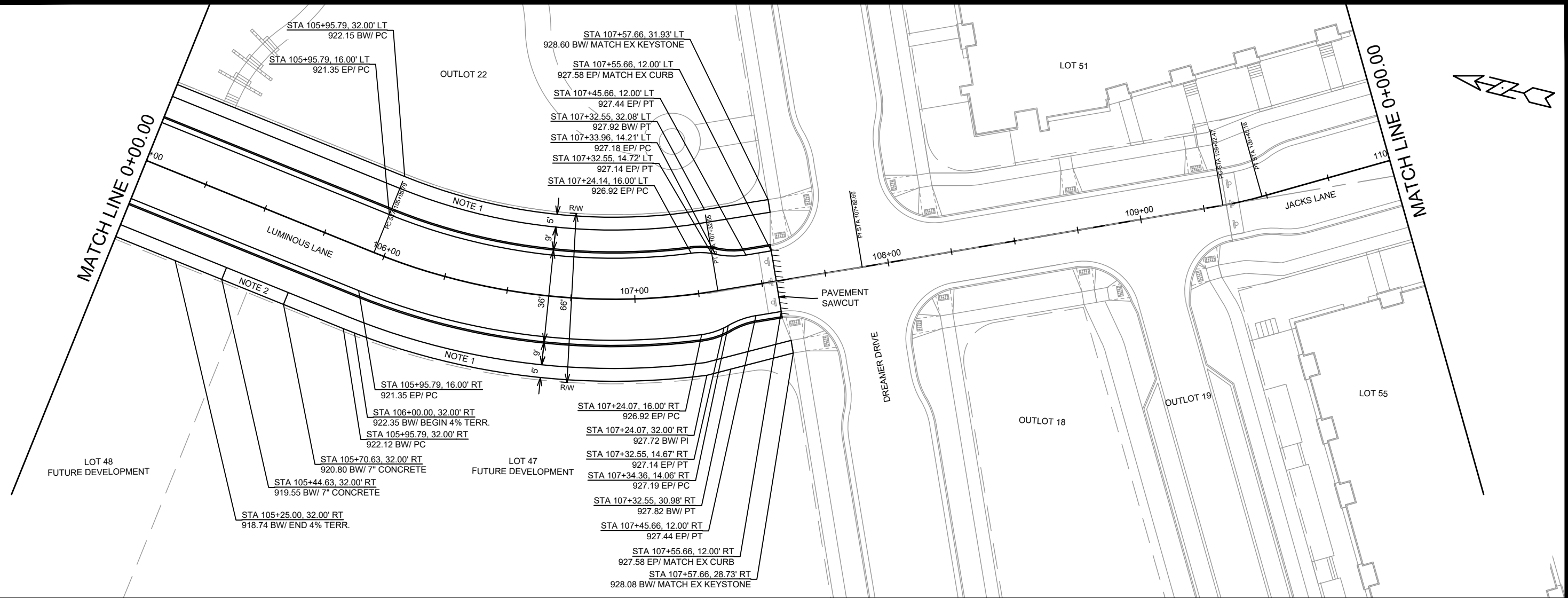
OVERVIEW PLAN
 THE AMERICAN CENTER EASTPARK FIFTH ADDITION
 M:\DESIGN\Projects\14548\CAD\Streets\14548EN-OverviewPlan.dwg



14548
 O-1

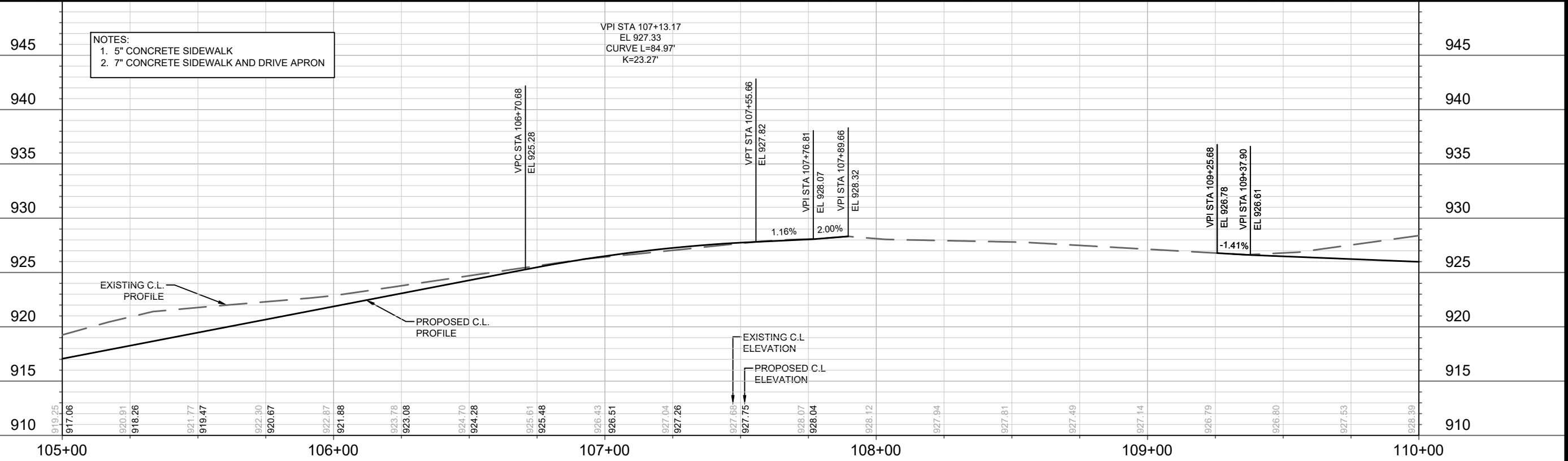
MATCH LINE 0+00.00

MATCH LINE 0+00.00



NOTES:
 1. 5" CONCRETE SIDEWALK
 2. 7" CONCRETE SIDEWALK AND DRIVE APRON

VPI STA 107+13.17
 EL 927.33
 CURVE L=84.97'
 K=23.27'



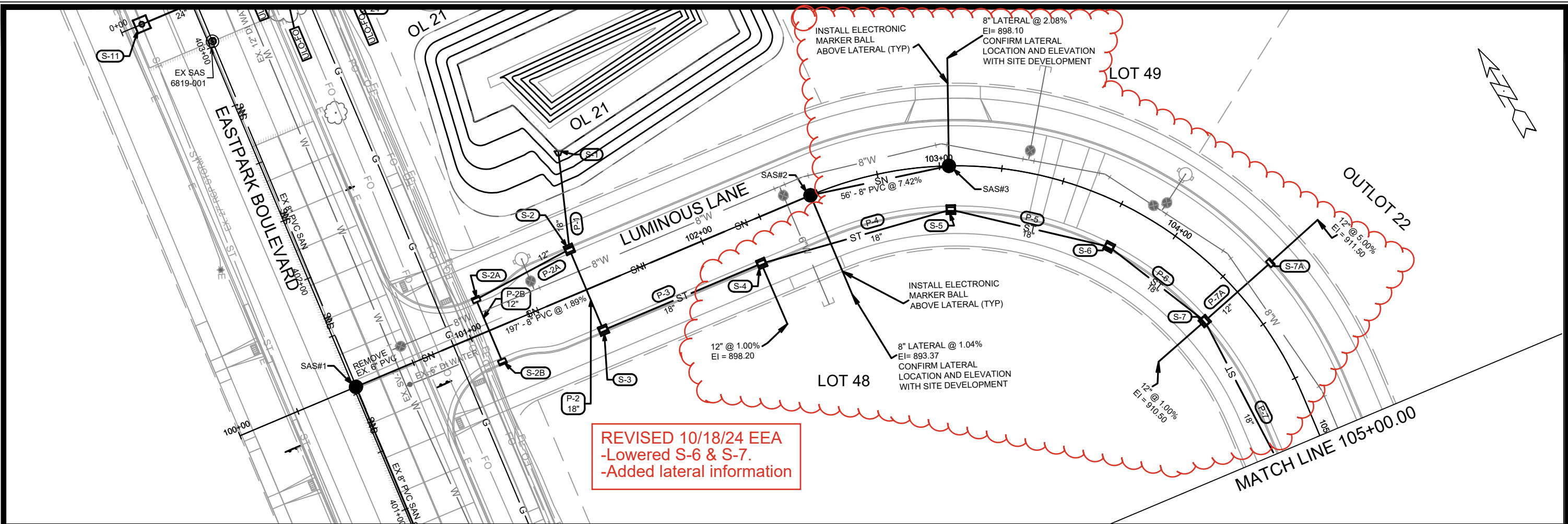
MARK	REVISION	DATE	BY
14548	14548	8/29/2024 3:39 PM	14548
Scale: #####			P-2

14548
 MADISON, WI
 CONTRACT NO: 9291

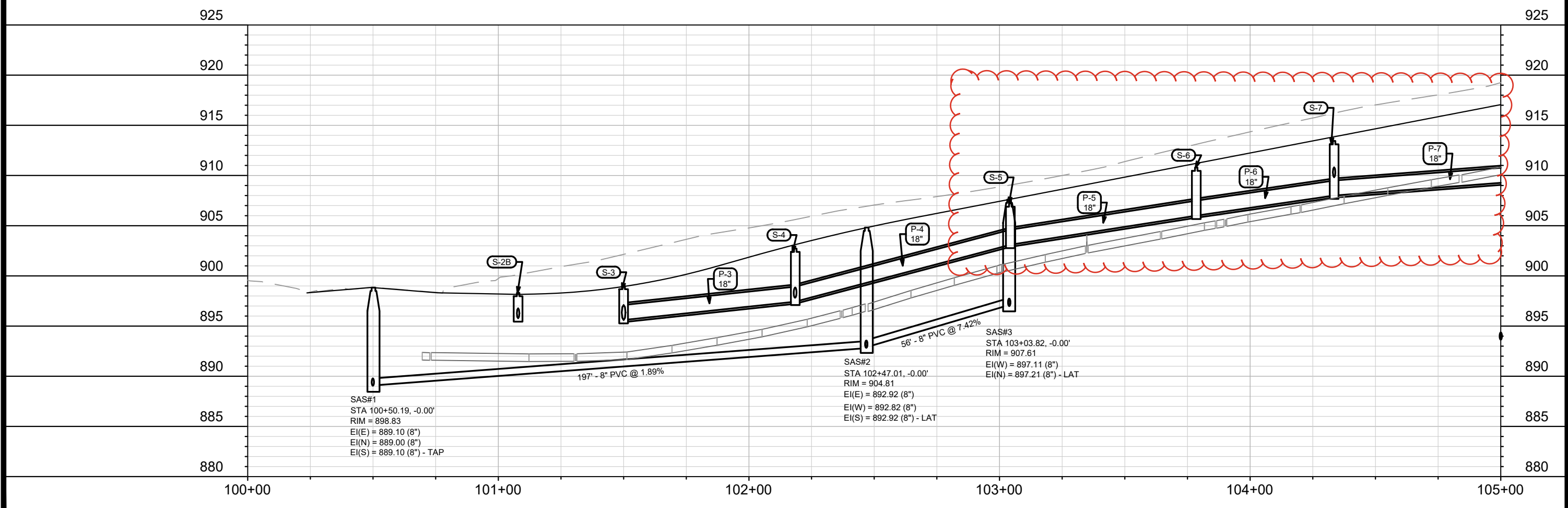
PLAN & PROFILE - LUMINOUS LANE
 THE AMERICAN CENTER EASTPARK FIFTH ADDITION
 M:\DESIGN\Projects\14548\CAD\Streets\14548EN-PnP.dwg



14548
 P-2



REVISED 10/18/24 EEA
 -Lowered S-6 & S-7.
 -Added lateral information



SAS#1
 STA 100+50.19, -0.00'
 RIM = 898.83
 EI(E) = 889.10 (8")
 EI(N) = 889.00 (8")
 EI(S) = 889.10 (8") - TAP

SAS#2
 STA 102+47.01, -0.00'
 RIM = 904.81
 EI(E) = 892.92 (8")
 EI(W) = 892.82 (8")
 EI(S) = 892.92 (8") - LAT

SAS#3
 STA 103+03.82, -0.00'
 RIM = 907.61
 EI(W) = 897.11 (8")
 EI(N) = 897.21 (8") - LAT

MARK	REVISION	DATE	BY
U-1	14548	10/21/2024 11:03 AM	Scale: 1" = 40'

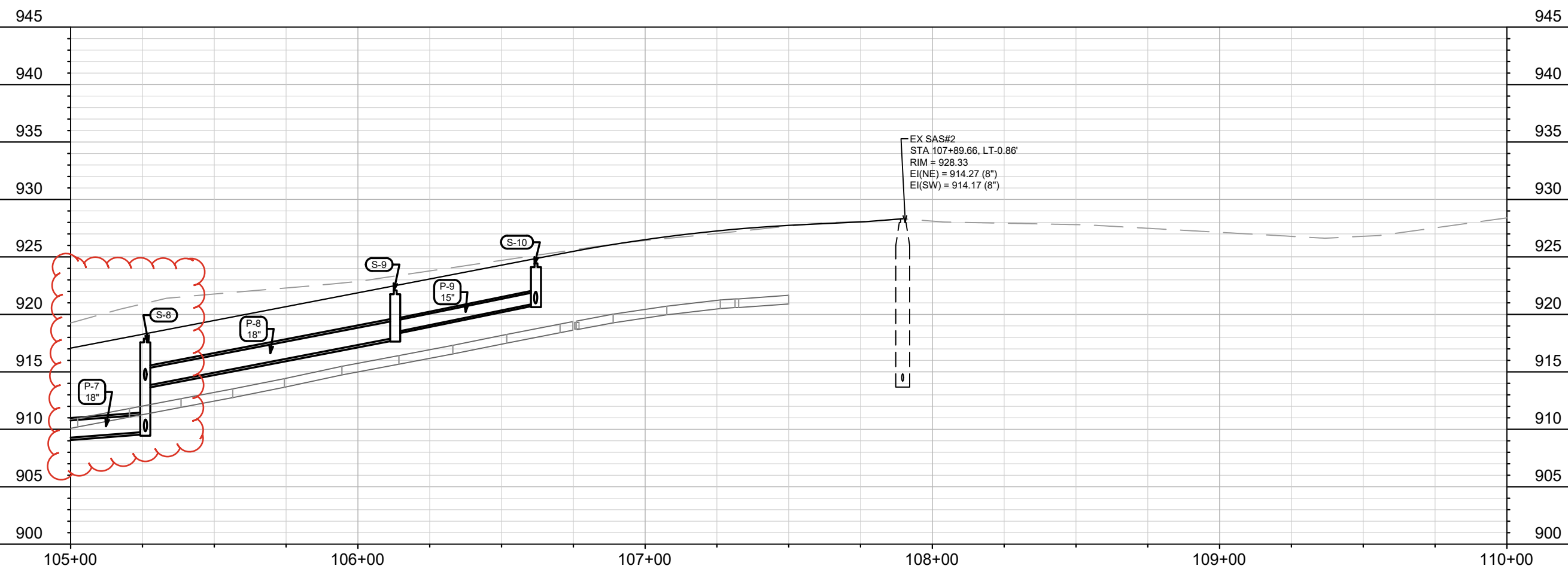
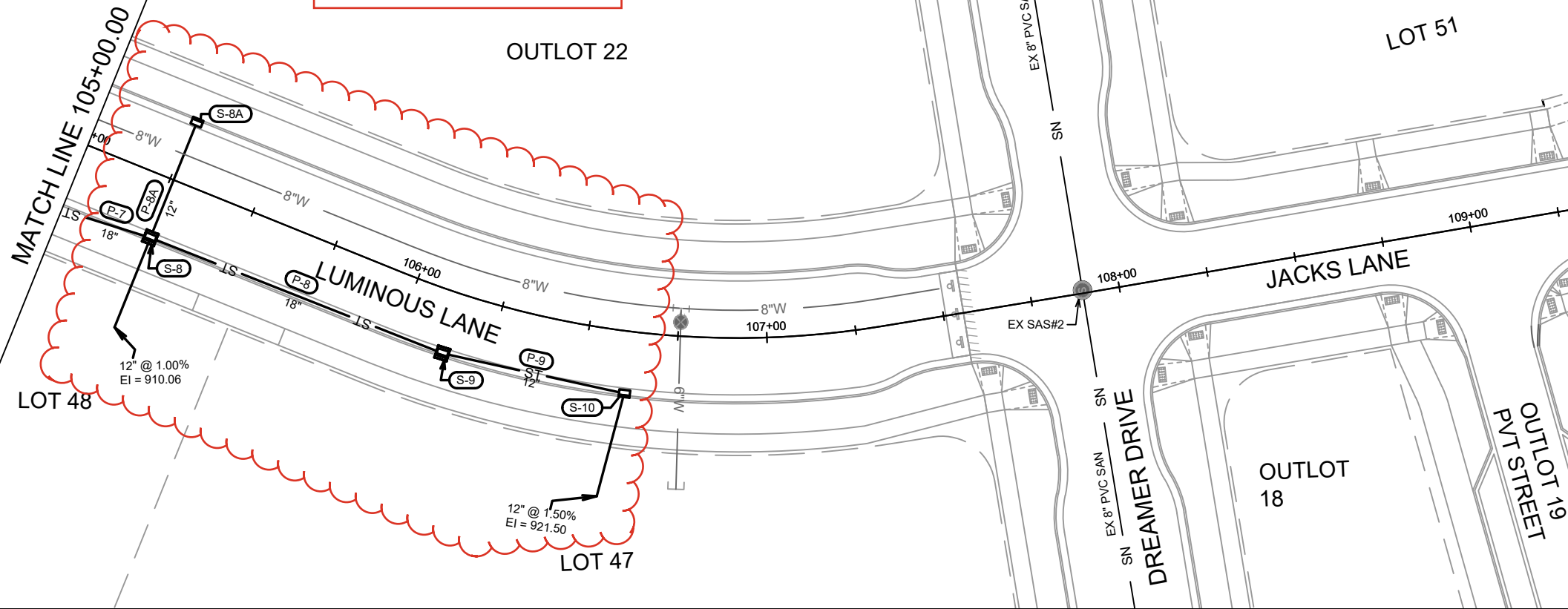
14548
 MADISON, WI
 CONTRACT NO: 9291

LUMINOUS LANE - UTILITIES PLAN & PROFILE
 THE AMERICAN CENTER EASTPARK FIFTH ADDITION
 M:\DESIGN\Projects\14548\CAD\Sewers\14548SWR-PipeNetwork.dwg



14548
 U-1

REVISED 10/18/24 EEA
 -Lowered S-8
 -Added lateral information



EX SAS#2
 STA 107+89.66, LT-0.86'
 RIM = 928.33
 EI(NE) = 914.27 (8")
 EI(SW) = 914.17 (8")

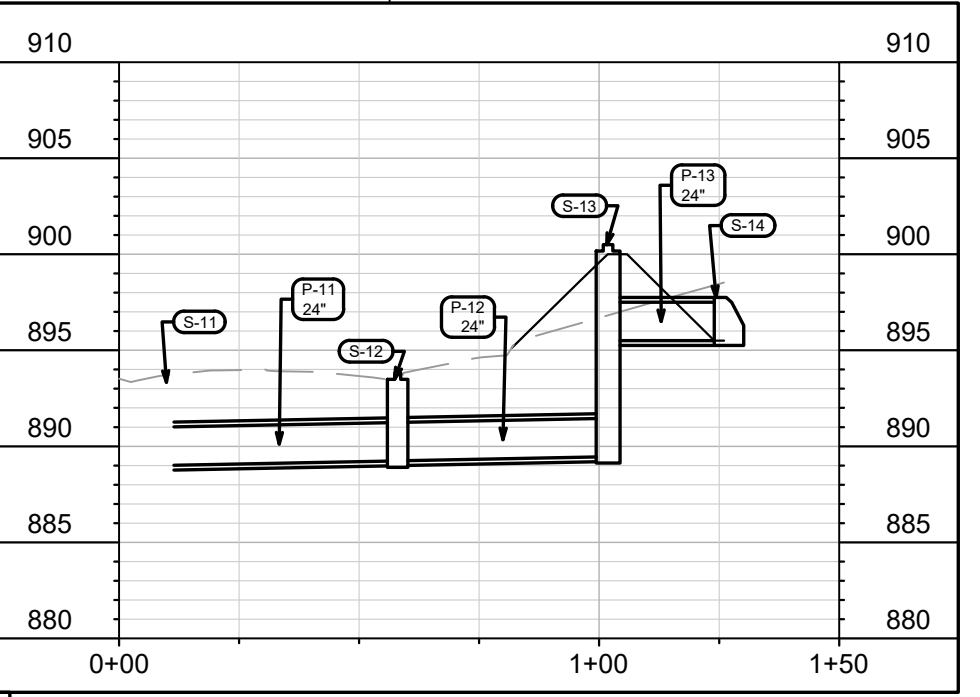
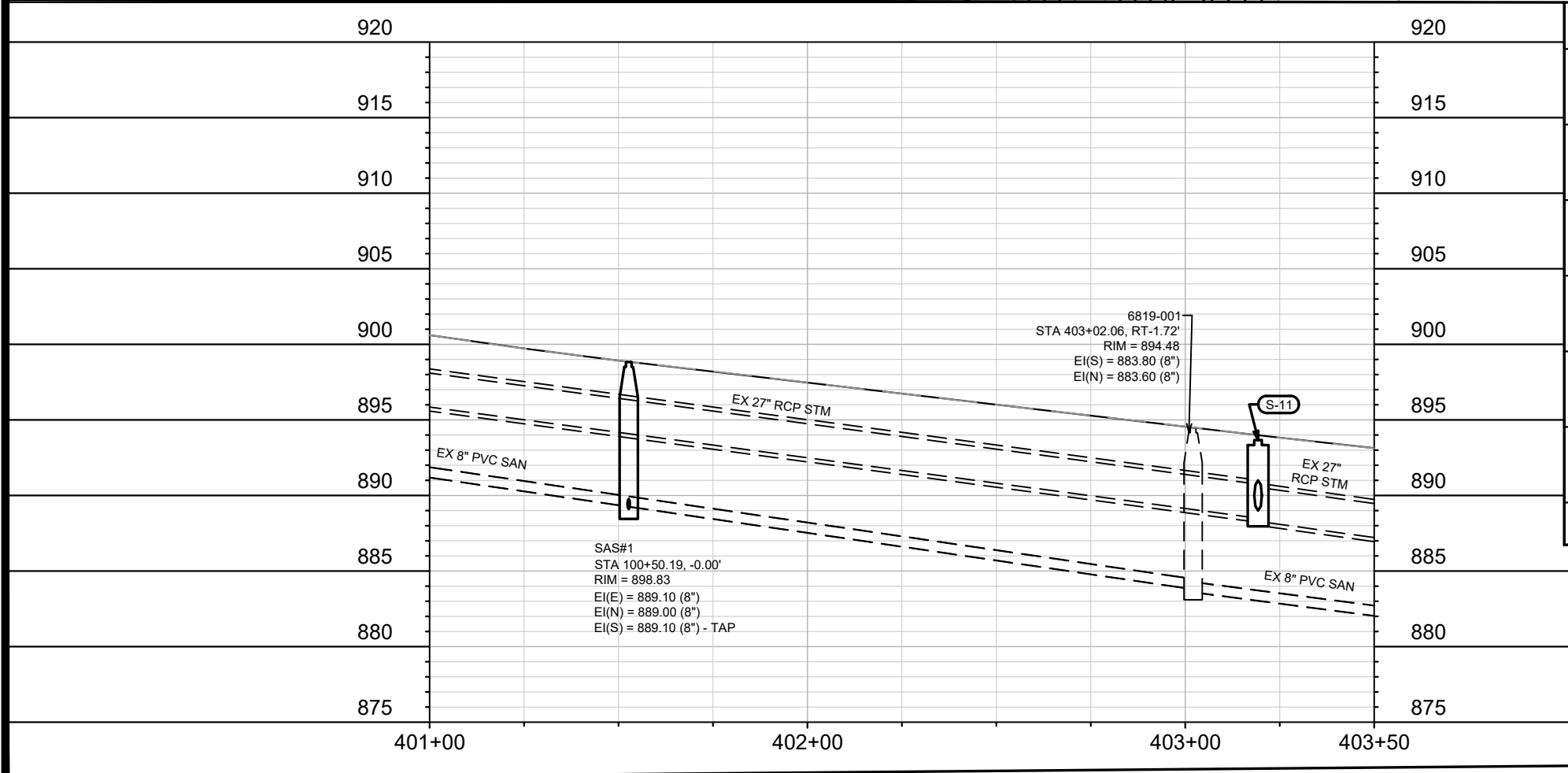
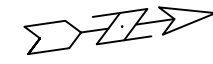
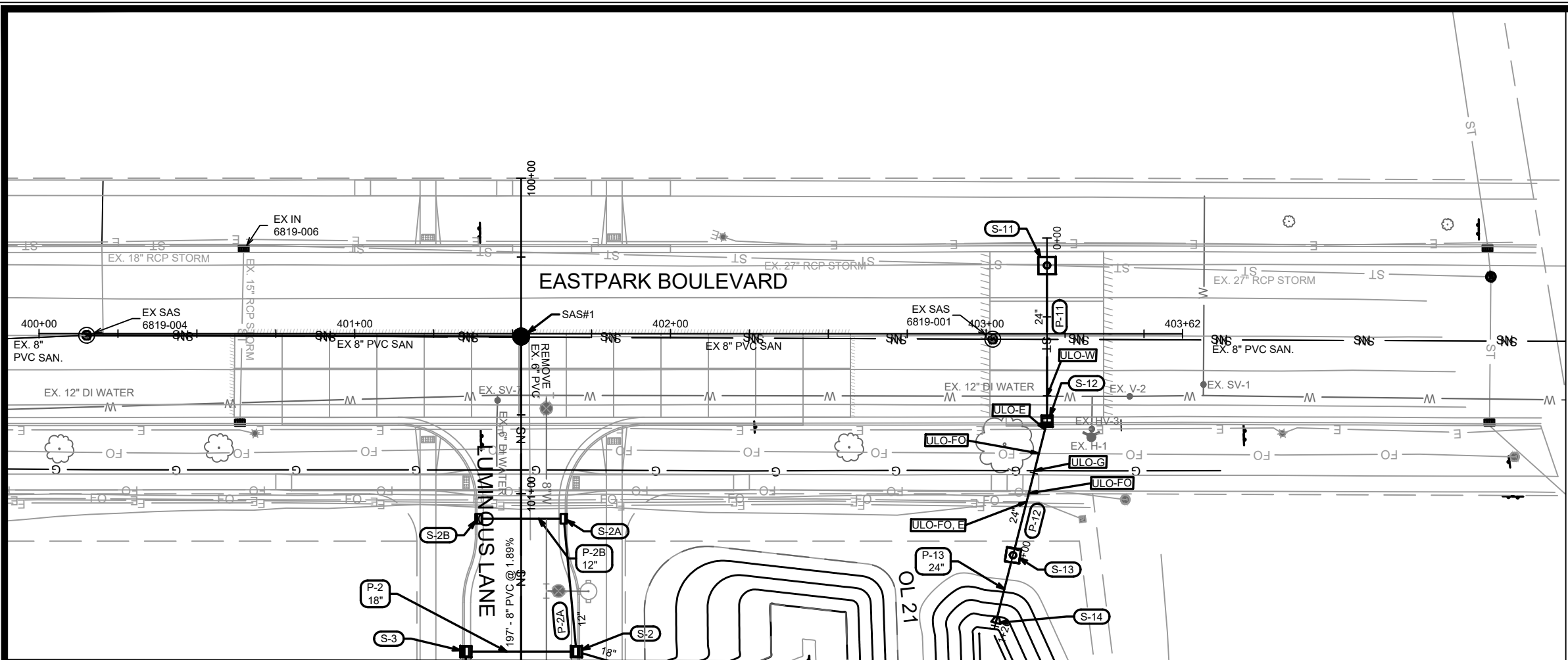
MARK	REVISION	DATE	BY
14548	U-2	10/21/2024 8:49 AM	

14548
 MADISON, WI
 CONTRACT NO: 9291

LUMINOUS & JACKS LANE - UTILITIES PLAN & PROFILE
 THE AMERICAN CENTER EASTPARK FIFTH ADDITION
 M:\DESIGN\Projects\14548\CAD\sewers\14548SWR-PipeNetwork.dwg



14548
 U-2



MARK	REVISION	DATE	BY
14548	U-3	08/29/2024	1:06 PM

14548
 MADISON, WI
 CONTRACT NO: 9291

EASTPARK BOULEVARD - UTILITIES PLAN & PROFILE
 THE AMERICAN CENTER EASTPARK FIFTH ADDITION
 M:\DESIGN\Projects\14548\CAD\Servers\14548SWR-PipeNetwork.dwg



14548
 U-3

SANITARY SEWER SCHEDULE

THE AMERICAN CENTER EASTPARK 5TH ADD	SHEET NO.
PROJECT NO. 14548	U-SAN
SANITARY SEWER SCHEDULE	
CITY OF MADISON	

PROPOSED SANITARY STRUCTURES

SAS NO.	STATION	LOCATION (OFFSET)	TOP OF CASTING	E.I.	DEPTH (FT)	NOTES
LUMINOUS LANE						
SAS#1	100+50.19	CL	898.83	889.00	9.83	-
SAS#2	102+47.01	CL	904.81	892.82	11.99	-
SAS#3	103+03.82	CL	907.61	897.11	10.50	-

PROPOSED SANITARY PIPES

FROM (DNSTM)	TO (UPSTM)	DWNSTRM E.I.	UPSTRM E.I.	PLAN LGTH (FT)	SLOPE (%)	PIPE SIZE	PVC TYPE	NOTES
SAS#1	SAS#2	889.10	892.82	197	1.89%	8"	SDR-35	-
SAS#2	SAS#3	892.92	897.11	56	7.42%	8"	SDR-35	-

NOTES:

- ALL STRUCTURES SHALL BE SUBMITTED TO CITY ENGINEERING FOR APPROVAL. CONTACT ELIA E ACOSTA OF CITY ENGINEERING AT (608) 266-4096 FOR PRECAST APPROVALS, FAX SHOP DRAWINGS TO (608)264-9275, OR EMAIL SHOP DRAWINGS TO EACOSTA@CITYOFMADISON.COM.

STORM SEWER SCHEDULE

* REVISED 10/18/2024 EEA

THE AMERICAN CENTER EASTPARK 5TH ADD	SHEET NO.
PROJECT NO. 14548	U-STM
STORM SEWER SCHEDULE	
CITY OF MADISON	

PROPOSED STORM STRUCTURES

STRUC. NO.	STATION	LOCATION (OFFSET)	TYPE	TOP OF CASTING	E.I.	DEPTH	NOTES
LUMINOUS LANE							
S-1	101+61.13	LT-55.42	18" RCP APRON END	-	895.25	-	W/ GATE
S-2	101+50.00	LT-17.50	3X3 SAS	899.00	895.44	3.56	FP; W/ R-3067-7004-V
S-2A	101+07.91	LT-13.50	H INLET	898.30	895.64	2.66	FP; LP; W/ R-3067-7004-VB
S-2B	101+07.91	RT-13.50	H INLET	898.78	895.77	3.01	LP; W/ R-3067-7004-VB
S-3	101+50.00	RT-17.50	3X3 SAS	899.48	895.60	3.88	FP; W/ R-3067-7004-V
S-4	102+18.50	RT-17.50	3X3 SAS	903.19	897.43	5.76	W/ R-3067-7004-V
S-5	103+04.30	RT-17.50	3X3 SAS	907.70	903.10	4.60	W/ R-3067-7004-V
* S-6	103+78.50	RT-17.50	3X3 SAS	911.27	906.00	5.27	W/ R-3067-7004-V
* S-7	104+33.50	RT-17.50	3X3 SAS	913.92	908.00	5.92	W/ R-3067-7004-V
S-7A	104+33.50	LT-17.50	H INLET	913.92	910.32	3.60	W/ R-3067-7004-V
* S-8	105+26.00	RT-17.50	3X3 SAS	918.37	909.77	8.60	W/ R-3067-7004-V
S-8A	105+26.00	LT-17.50	H INLET	918.37	914.77	3.60	W/ R-3067-7004-V
S-9	106+13.00	RT-17.50	3X3 SAS	922.56	917.96	4.60	W/ R-3067-7004-V
* S-10	106+62.00	RT-17.50	H INLET	924.92	920.96	3.96	W/ R-3067-7004-V

PROPOSED STORM PIPES

PIPE NO.	FROM (DNSTM)	TO (UPSTM)	DISCH. E.I.	INLET E.I.	PLAN (PAY) LGTH (FT)	PIPE LGTH (FT)	SLOPE (%)	PIPE SIZE	TYPE	NOTES
LUMINOUS LANE										
P-1	S-1	S-2	895.25	895.44	40	38	0.50%	18"	TYPE II	-
P-2	S-2	S-3	895.44	895.60	35	32	0.50%	18"	TYPE I	-
P-2A	S-2	S-2A	895.44	895.64	42	39	0.51%	12"	TYPE II	NCM
P-2B	S-2A	S-2B	895.64	895.77	27	25	0.52%	12"	TYPE I	-
P-3	S-3	S-4	895.60	897.43	69	66	2.77%	18"	TYPE II	-
P-4	S-4	S-5	897.43	903.10	79	76	7.46%	18"	TYPE II	-
* P-5	S-5	S-6	903.10	906.00	65	62	4.68%	18"	TYPE II	-
* P-6	S-6	S-7	906.00	908.00	48	45	4.44%	18"	TYPE II	-
* P-7	S-7	S-8	908.00	909.77	86	83	2.13%	18"	TYPE II	-
P-7A	S-7	S-7A	909.82	910.32	35	33	1.52%	12"	TYPE I	-
P-8	S-8	S-9	913.77	917.96	88	85	4.93%	18"	TYPE II	-
P-8A	S-8	S-8A	914.27	914.77	35	33	1.52%	12"	TYPE I	-
* P-9	S-9	S-10	918.46	920.96	52	49	5.10%	12"	TYPE II	-

EASTPARK BOULEVARD

S-11	403+19.28	LT-22.34	5X5 SAS	893.67	888.29	5.38	W/ R-1550
S-12	403+19.31	RT-27.00	3X3 SAS	893.84	889.24	4.60	FP; W/ R-3067-7004-V
S-13	403+08.51	RT-69.48	INFILTRATION BASIN STRUCTURE	900.50	889.46	11.04	W/ R-1480-E; (1)
S-14	403+03.05	RT-90.92	24" RCP APRON END	-	895.50	-	W/ GATE

EASTPARK BOULEVARD

P-11	S-11	S-12	889.00	889.24	49	45	0.54%	24"	TYPE I	-
P-12	S-12	S-13	889.24	889.46	44	40	0.54%	24"	TYPE II	-
P-13	S-13	S-14	895.50	895.50	22	20	0.00%	24"	TYPE II	-

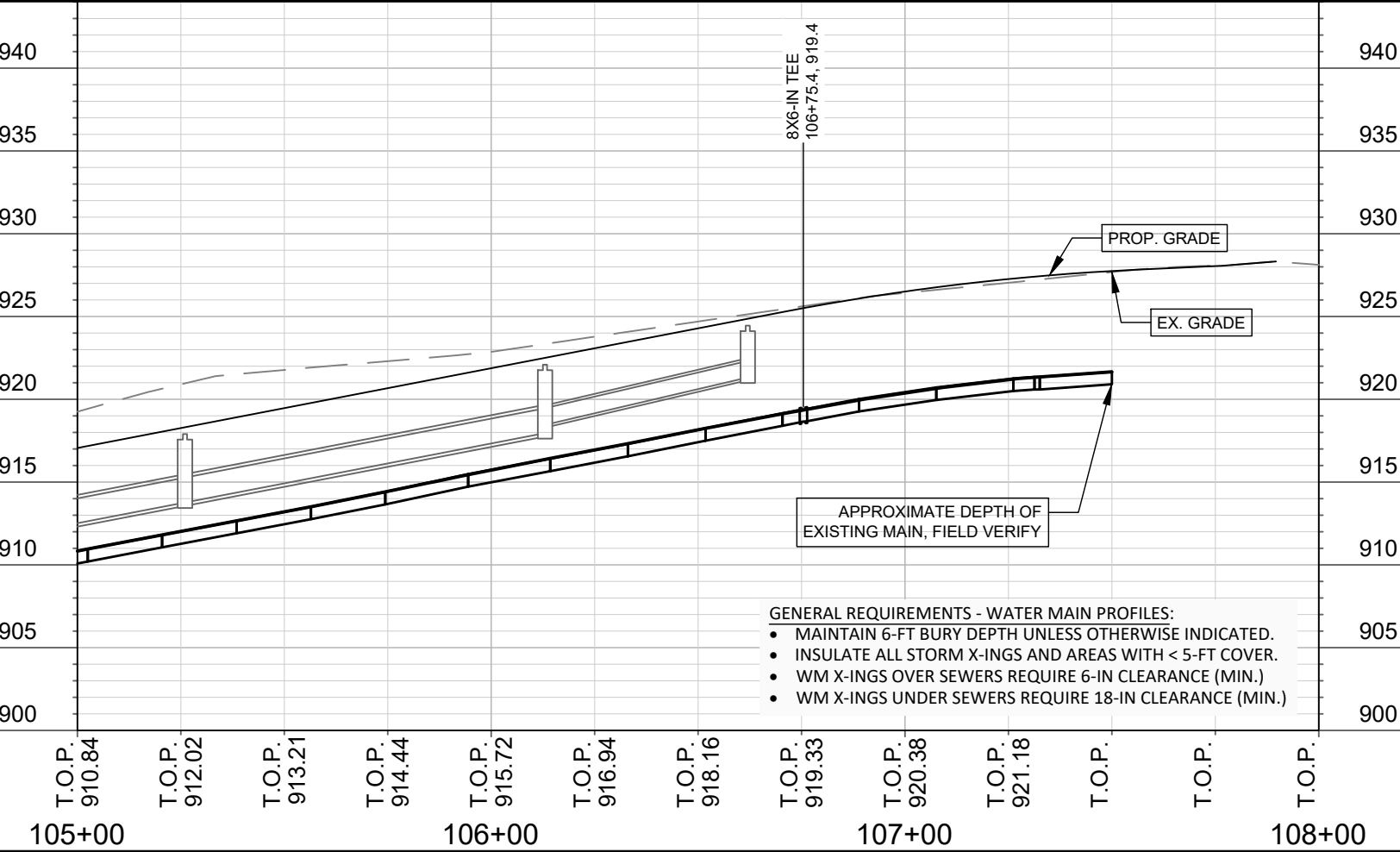
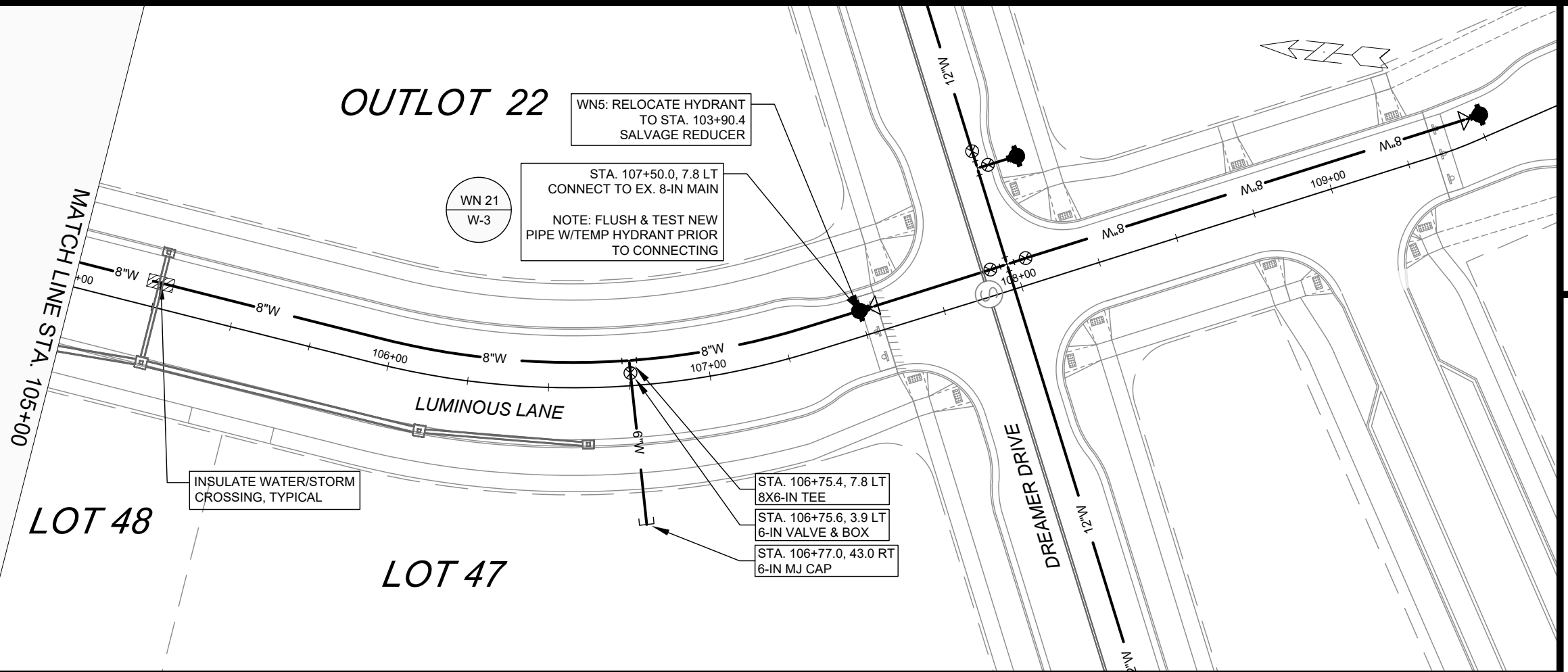
NOTES:

(1) TOP OF BAFFLE AT 897.15; 2-6" ORIFICE EI= 896.50; 8" ORIFICE FOR UNDERDRAIN EI= 894.50

STANDARD NOTES:

- PLAN LENGTH (PAY LENGTH) IS FROM CENTER OF STRUCTURE TO CENTER OF STRUCTURE. PIPE LENGTH IS ACTUAL LENGTH OF PIPE FROM STRUCTURE WALL TO STRUCTURE WALL. SLOPE CALCULATED USING PIPE LENGTH.
- ABBREVIATIONS: AE = APRON ENDWALL; RCP = REINFORCED CONCRETE PIPE; HERCP = HORIZONTAL ELLIPTICAL REINFORCED CONCRETE PIPE; DNA = DOES NOT APPLY; SAS = SEWER ACCESS STRUCTURE; LP = LOW POINT INLET STRUCTURE; FP = FIELD POURED STRUCTURE; TR = TOP OF CONCRETE ROOF; NCM = NO CROWN MATCH FOR PIPES; UD = UNDERDRAIN
- APPROXIMATE DISCHARGE E.I. GIVEN, ADJUST E.I. AND PIPE SLOPE IN THE FIELD.
- TOP OF CASTING GRADE GIVEN IS THE TOP OF CURB FOR INLET STRUCTURES AND THE FLOWLINE OF THE CLOSED CASTING FOR SAS'S.
- ALL REINFORCED CONCRETE PIPES TO BE CLASS III UNLESS OTHERWISE NOTED.
- SURVEYOR TO CONFIRM THAT ALL INLET STATION / OFFSETS LINE UP WITH PROPOSED CURB AND GUTTER.

- ALL FIELD POURED SAS STORM STRUCTURES SHALL BE CONSTRUCTED IN ACCORDANCE WITH STANDARD DETAIL DRAWING 5.7.3. ALL PRECAST SAS STORM STRUCTURES SHALL BE CONSTRUCTED IN ACCORDANCE WITH STANDARD DETAIL DRAWING 5.7.5.
- ALL STRUCTURES CALLED OUT AS FIELD POURED SHALL BE FIELD POURED. ALL OTHER STRUCTURES (NOT INDICATED AS FIELD POURED) SHALL BE SUBMITTED TO CITY ENGINEERING FOR APPROVAL IF PRECAST STRUCTURES ARE PREFERRED. CONTACT ELIA E ACOSTA OF CITY ENGINEERING AT (608) 266-4096 FOR STORM SEWER PRECAST APPROVALS, FAX SHOP DRAWINGS TO (608)264-9275, OR EMAIL SHOP DRAWINGS TO EACOSTA@CITYOFMADISON.COM.
- FOR SWM PRECAST APPROVALS CONTACT PHIL GAEBLER AT (608) 266-4059 OR EMAIL SWM SHOP DRAWINGS TO PGAEBLER@CITYOFMADISON.COM



- GENERAL REQUIREMENTS - WATER MAIN PROFILES:**
- MAINTAIN 6-FT BURY DEPTH UNLESS OTHERWISE INDICATED.
 - INSULATE ALL STORM X-INGS AND AREAS WITH < 5-FT COVER.
 - WM X-INGS OVER SEWERS REQUIRE 6-IN CLEARANCE (MIN.)
 - WM X-INGS UNDER SEWERS REQUIRE 18-IN CLEARANCE (MIN.)

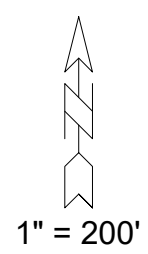
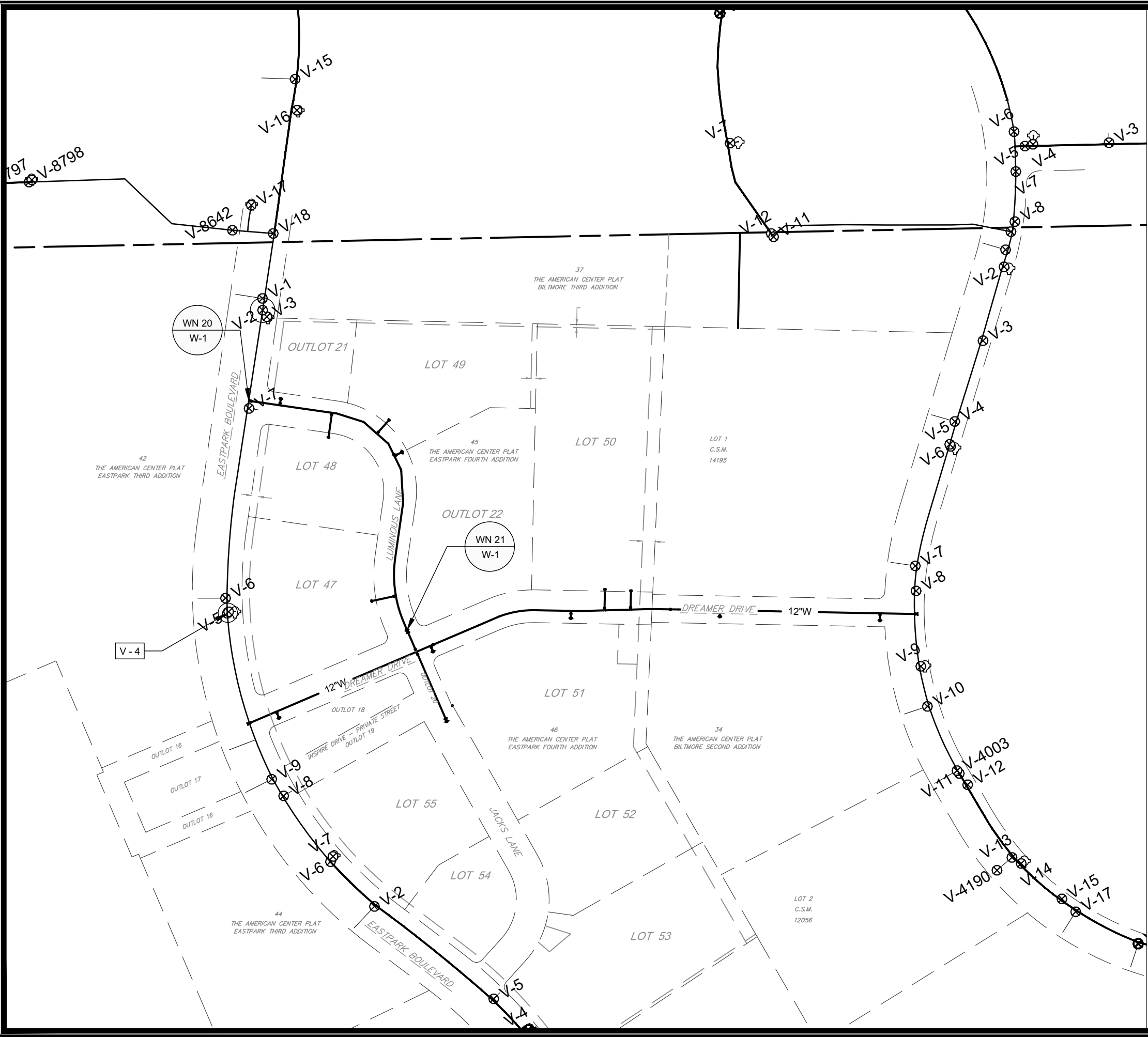
THE AMERICAN CENTER EASTPARK FIFTH ADDITION
 WATER PLAN AND PROFILE - LUMINOUS LANE
 CITY OF MADISON, WISCONSIN

SCALE: 1" = 40'
 DESIGNED BY: NGM
 MADISON WATER UTILITY
 119 E OLIN AVE, MADISON, WI 53713
 PRINTING DATE: 8/28/24

CONTRACT NO: 9291



14548
 W-2



WN20: CUT-IN CONNECTION
EASTPARK BLVD AT LUMINOUS LANE

- ISOLATION VALVES:
 - V-2 (12-IN, EASTPARK BLVD NORTH OF LUMINOUS LANE)
 - V-4 (12-IN, EASTPARK BLVD SOUTH OF LUMINOUS LANE)

WN21: CUT-IN CONNECTION
LUMINOUS LANE AT DREAMER DRIVE

- ISOLATION VALVES:
 - V-XXXX (8-IN)

DISCLAIMER NOTE:
 THE WATER IMPACT PLAN IS PROVIDED FOR REFERENCE PURPOSES TO AID PLANNING CONNECTION POINT ISOLATION AND PREPARING NOTIFICATION LISTS DURING PLANNED OUTAGES. REQUEST ANY ALTERNATIVE CONNECTION METHODS IN WRITING, PER SPECS.

SCALE: 1" = 200'
 DESIGNED BY: NGM
 MADISON WATER UTILITY
 119 E OLIN AVE, MADISON, WI 53713
 PRINTING DATE: 8/28/24

CONTRACT NO: 9122

THE AMERICAN CENTER EASTPARK FIFTH ADDITION
 WATER IMPACT PLAN
CITY OF MADISON, WISCONSIN



14548
 W-3



CONSTRUCTION NOTES:

- | | |
|---|--|
| <ol style="list-style-type: none"> CONSTRUCT NEW WATER MAIN 6.0' BELOW FINISHED GRADE, UNLESS OTHERWISE NOTED. INSULATE MAIN WITH POLYSTYRENE BOARD AT STORM CROSSINGS AND OTHER AREAS IDENTIFIED BY ENGINEER AS HAVING INADEQUATE COVER. VERIFY SIZE OF EXISTING WATER SERVICES AND RECONNECT SERVICES AS INDICATED. MINIMIZE DISRUPTION OF SERVICE TO CUSTOMERS. NOTIFY PER CONTRACT REQUIREMENTS OF ANY PLANNED WATER OUTAGE. | <p>WN-1 REPLACE THE EXISTING LEAD SERVICE WITH A NEW COPPER SERVICE.</p> <p>WN-2 EXTEND AND RECONNECT THE EXISTING COPPER SERVICE TO THE NEW WATER MAIN.</p> <p>WN-3 EXISTING SERVICE TO BE ABANDONED WHEN THE WATER MAIN IS CUT OFF.</p> <p>WN-4 DISCONNECT FROM THE OLD WATER MAIN AND RECONNECT THE EXISTING COPPER WATER SERVICE LATERAL TO THE NEW WATER MAIN.</p> <p>WN-5 RELOCATE THE EXISTING FIRE HYDRANT.</p> <p>WN-6 ABANDON WATER VALVE ACCESS STRUCTURE.</p> <p>WN-7 FURNISH AND INSTALL THE NEW TOP SECTION FOR THE WATER ACCESS STRUCTURE.</p> <p>WN-8 ABANDON THE VALVE BOX.</p> <p>WN-9 FURNISH THE DITCH, COMPACTION, AND ALL MATERIALS AND LABOR FOR THE INSTALLATION OF NEW SERVICE LATERAL.</p> <p>WN-10 REMOVE AND SALVAGE EXISTING HYDRANT</p> <p>WN-11 REPLACE THE EXISTING COPPER SERVICE WITH A COPPER SERVICE</p> <p>WN-20+ SEE WATER IMPACT PLAN FOR CONNECTION POINT ISOLATION AND WATER SHUT-OFF NOTIFICATION INFORMATION.</p> |
|---|--|

***ESTIMATE OF MATERIALS SUPPLIED BY CONTRACTOR:**

PAY_ITEM_ID	DESCRIPTION	QUANTITY	UNIT
70002	FURNISH AND INSTALL 6-INCH PIPE & FITTINGS	198	LNFT
70003	FURNISH AND INSTALL 8-INCH PIPE & FITTINGS	743	LNFT
70031	FURNISH AND INSTALL 6-INCH WATER VALVE	5	EACH
70032	FURNISH AND INSTALL 8-INCH WATER VALVE	2	EACH
70040	FURNISH AND INSTALL AND SALVAGE HYDRANT	1	EACH
70101	FURNISH AND INSTALL STYROFOAM	6	EACH
71001	6-IN MJ CAP	3	EACH
71013	6-IN MJ PLUG	1	EACH
71135	8-IN 22-1/2° BEND	3	EACH
71147	8-IN 11-1/4° BEND	2	EACH
71210	8X6-IN TEE	5	EACH
71218	12X8-IN TEE	1	EACH

***ESTIMATE OF MATERIALS SUPPLIED BY WATER UTILITY:**

***ESTIMATE OF MATERIALS SALVAGED:**

RELOCATED HYDRANT	1	EACH
-------------------	---	------

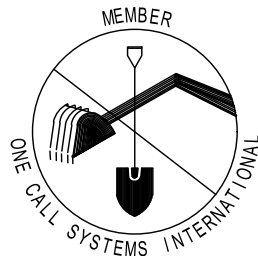
* ESTIMATE OF MATERIALS IS FOR INFORMATION ONLY. ENGINEER DOES NOT GUARANTEE ACCURACY OF MATERIAL TAKE-OFF.

TO OBTAIN LOCATION OF PARTICIPANTS' UNDERGROUND FACILITIES BEFORE YOU DIG IN WISCONSIN

CALL DIGGERS HOTLINE TOLL FREE
811 OR 1-800-242-8511

FAX-A-LOCATE 1-800-338-3860
TDD (FOR HEARING IMPAIRED) 1-800-542-2289

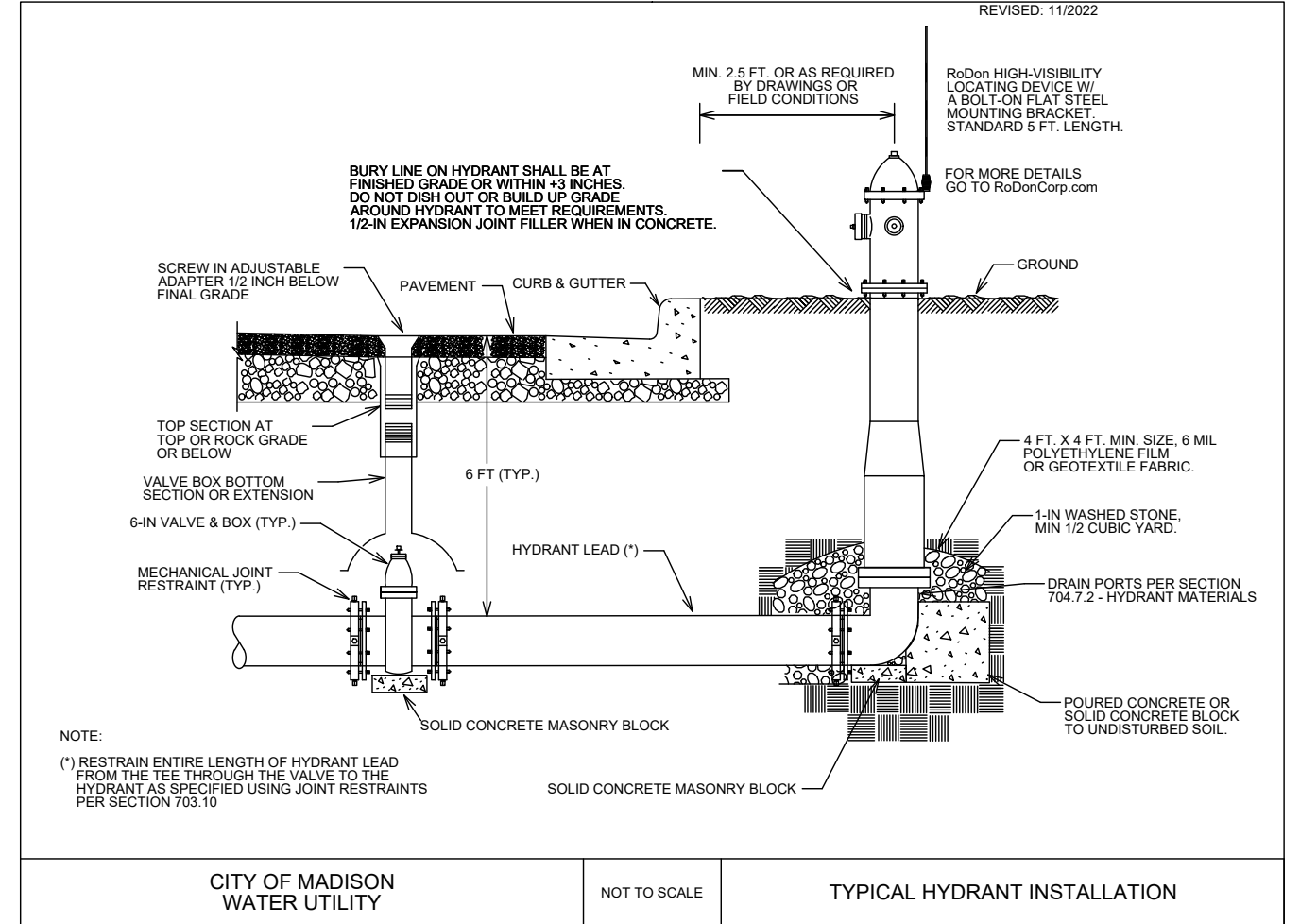
WIS. STATUTE 182.0175 (1974) REQUIRES MIN. OF 3 WORK DAYS NOTICE BEFORE YOU EXCAVATE.



DISCLAIMER NOTE: UTILITY LOCATIONS SHOWN ARE APPROXIMATE ONLY. IT SHALL BE THE CONTRACTOR'S RESPONSIBILITY TO DETERMINE THE EXACT HORIZONTAL AND VERTICAL LOCATION OF ALL EXISTING UNDERGROUND AND OVERHEAD UTILITIES PRIOR TO COMMENCING WORK.

PART VII - WATER MAINS AND SERVICE LATERALS

DETAIL DRAWING NO. 7.04
REVISED: 11/2022



CITY OF MADISON WATER UTILITY

NOT TO SCALE

TYPICAL HYDRANT INSTALLATION

THE AMERICAN CENTER EASTPARK FIFTH ADDITION

WATER ESTIMATE OF MATERIALS

CITY OF MADISON, WISCONSIN

SCALE: N/A

DESIGNED BY: NGM

MADISON WATER UTILITY

119 E OLIN AVE, MADISON, WI 53713

PRINTING DATE: 3/27/24

CONTRACT NO: 9291



14548

W-4



GENERAL ELECTRICAL NOTES:

1. ALL LOCATIONS ARE APPROXIMATE. TRAFFIC ENGINEER SHALL APPROVE FINAL LOCATIONS INCLUDING SETBACK IN THE FIELD. AFTER CONTRACTOR SURVEY STAKING, THE CONTRACTOR SHALL NOTIFY GRETCHEN AVILES PINEIRO (266-4899), AT LEAST 24-HOURS IN ADVANCE OF NEEDING BASE LOCATIONS MARKED.
2. THE CONTRACTOR SHALL DO ALL WORK IN ACCORDANCE WITH CITY OF MADISON STANDARD SPECIFICATIONS FOR PUBLIC WORKS CONSTRUCTION 2023 EDITION AND ALL ADDENDUMS THERETO. [HTTPS://WWW.CITYOFMADISON.COM/ENGINEERING/DOCUMENTS/STANDARD-SPECIFICATIONS/COMPLETESPECBOOK.PDF](https://www.cityofmadison.com/engineering/documents/standard-specifications/completespecbook.pdf)
3. ALL CONDUIT SHALL BE PVC SCHEDULE 80 UNDER PAVEMENT OR SCHEDULE 40 OTHERWISE. PULL WIRE REQUIRED AS PER STANDARD SPECIFICATIONS.
4. THE CONTRACTOR SHALL CALL CITY TE SHOP (266-4767) AT THE TRAFFIC ENGINEERING SHOP AT LEAST 24-HOURS IN ADVANCE OF POURING BASES AND BURYING CONDUIT TO ARRANGE FOR INSPECTION AND PRIOR TO REMOVING OR CONNECTING TO EXISTING CONDUIT OR HANDHOLES. ANY WORK COMPLETED WITHOUT INSPECTION IS SUBJECT TO REJECTION.
5. MATERIALS DESIGNATED TO BE FURNISHED AND INSTALLED BY THE CONTRACTOR SHALL BE SENT FOR APPROVAL TO GRETCHEN AVILES PINEIRO (GAVILESPINEIRO@CITYOFMADISON.COM).
6. THE CONTRACTOR SHALL ARRANGE FOR PICKUP OF THE FOLLOWING CITY MATERIALS:
 - 1" X 40" ANCHOR BOLTS: 6 SETS OF 4 FOR LB-3R BASES
 - 5 5 POLES: 30FT, 11GA, BLACK, DRILLED FOR SINGLE FIXTURE
 - 5 5 FIXTURES: USSL-PA1B-730-U-T2R-SA-BK-PR7 + MOUNTING BRACKET, PART NO. 5010B77

REMOVE EXISTING SL8126 BASE, POLE & FIXTURE ONCE NEW BASE HAS BEEN INSTALLED. INSTALL 2" CONDUIT. RELOCATE POLE AND FIXTURE TO NEW BASE. COORDINATE WITH CITY TE

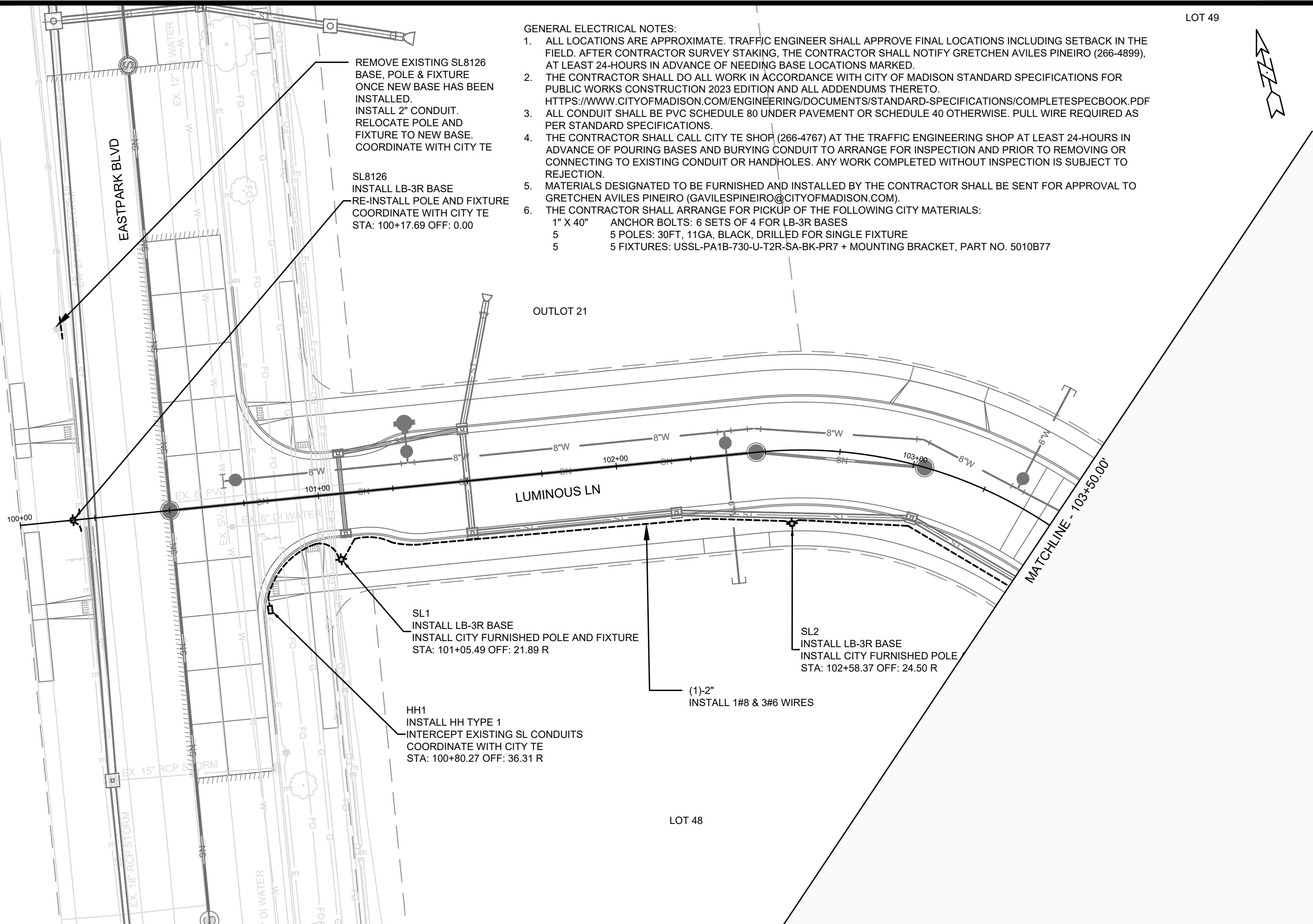
SL8126
INSTALL LB-3R BASE
RE-INSTALL POLE AND FIXTURE
COORDINATE WITH CITY TE
STA: 100+17.69 OFF: 0.00

SL1
INSTALL LB-3R BASE
INSTALL CITY FURNISHED POLE AND FIXTURE
STA: 101+05.49 OFF: 21.89 R

SL2
INSTALL LB-3R BASE
INSTALL CITY FURNISHED POLE
STA: 102+58.37 OFF: 24.50 R

HH1
INSTALL HH TYPE 1
INTERCEPT EXISTING SL CONDUITS
COORDINATE WITH CITY TE
STA: 100+80.27 OFF: 36.31 R

(1)-2"
INSTALL 1#8 & 3#6 WIRES



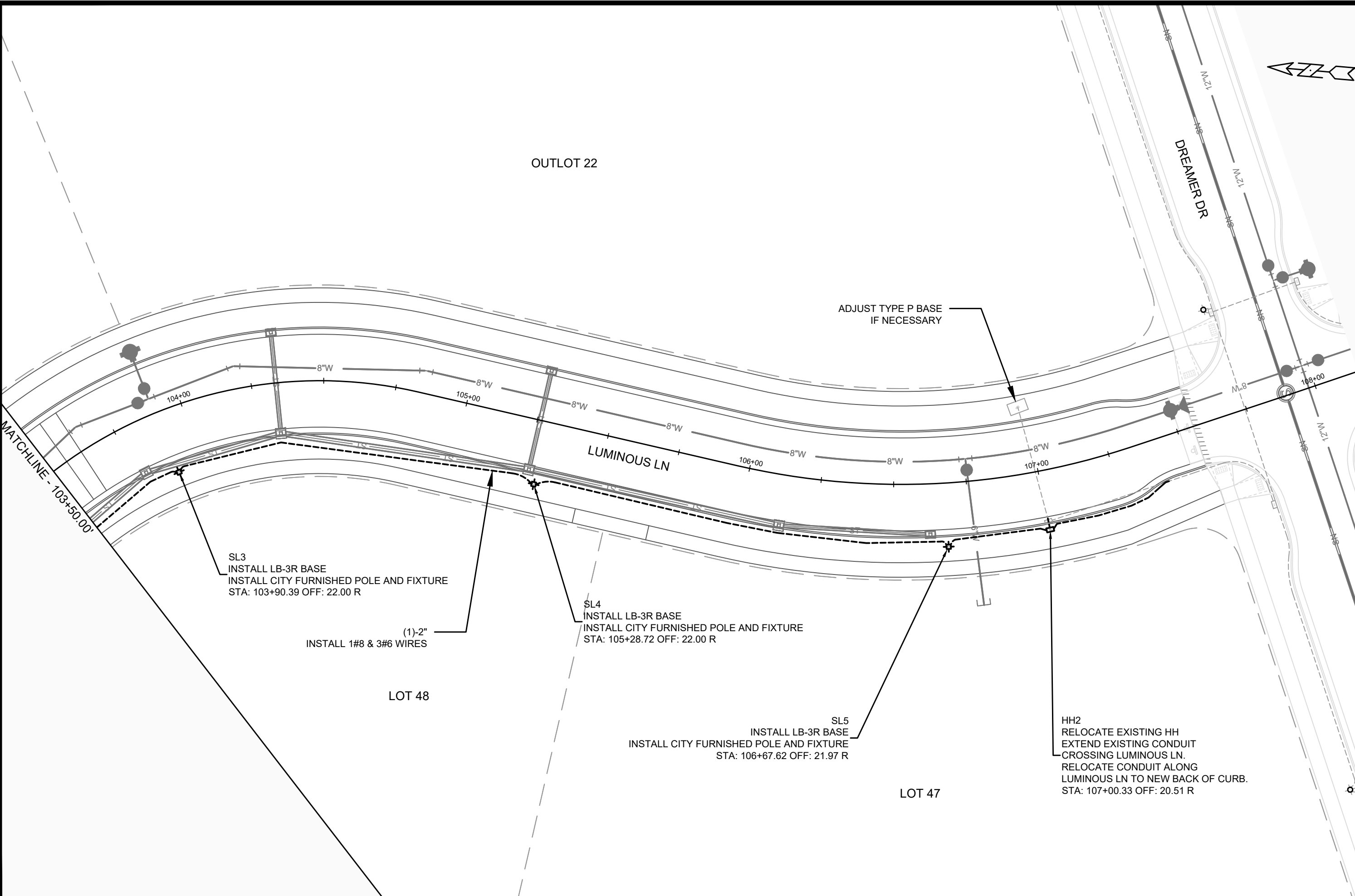
MARK	REVISION	DATE	BY

14548
MADISON, WI
9291

ELECTRICAL PLAN
THE AMERICAN CENTER EASTPARK FIFTH ADDITION
M:\DESIGN\Projects\14548\CAD\Traffic\14548TE-Electrical.dwg



CONTRACT NO:



SL3
 INSTALL LB-3R BASE
 INSTALL CITY FURNISHED POLE AND FIXTURE
 STA: 103+90.39 OFF: 22.00 R

(1)-2"
 INSTALL 1#8 & 3#6 WIRES

SL4
 INSTALL LB-3R BASE
 INSTALL CITY FURNISHED POLE AND FIXTURE
 STA: 105+28.72 OFF: 22.00 R

SL5
 INSTALL LB-3R BASE
 INSTALL CITY FURNISHED POLE AND FIXTURE
 STA: 106+67.62 OFF: 21.97 R

HH2
 RELOCATE EXISTING HH
 EXTEND EXISTING CONDUIT
 CROSSING LUMINOUS LN.
 RELOCATE CONDUIT ALONG
 LUMINOUS LN TO NEW BACK OF CURB.
 STA: 107+00.33 OFF: 20.51 R

ADJUST TYPE P BASE
 IF NECESSARY

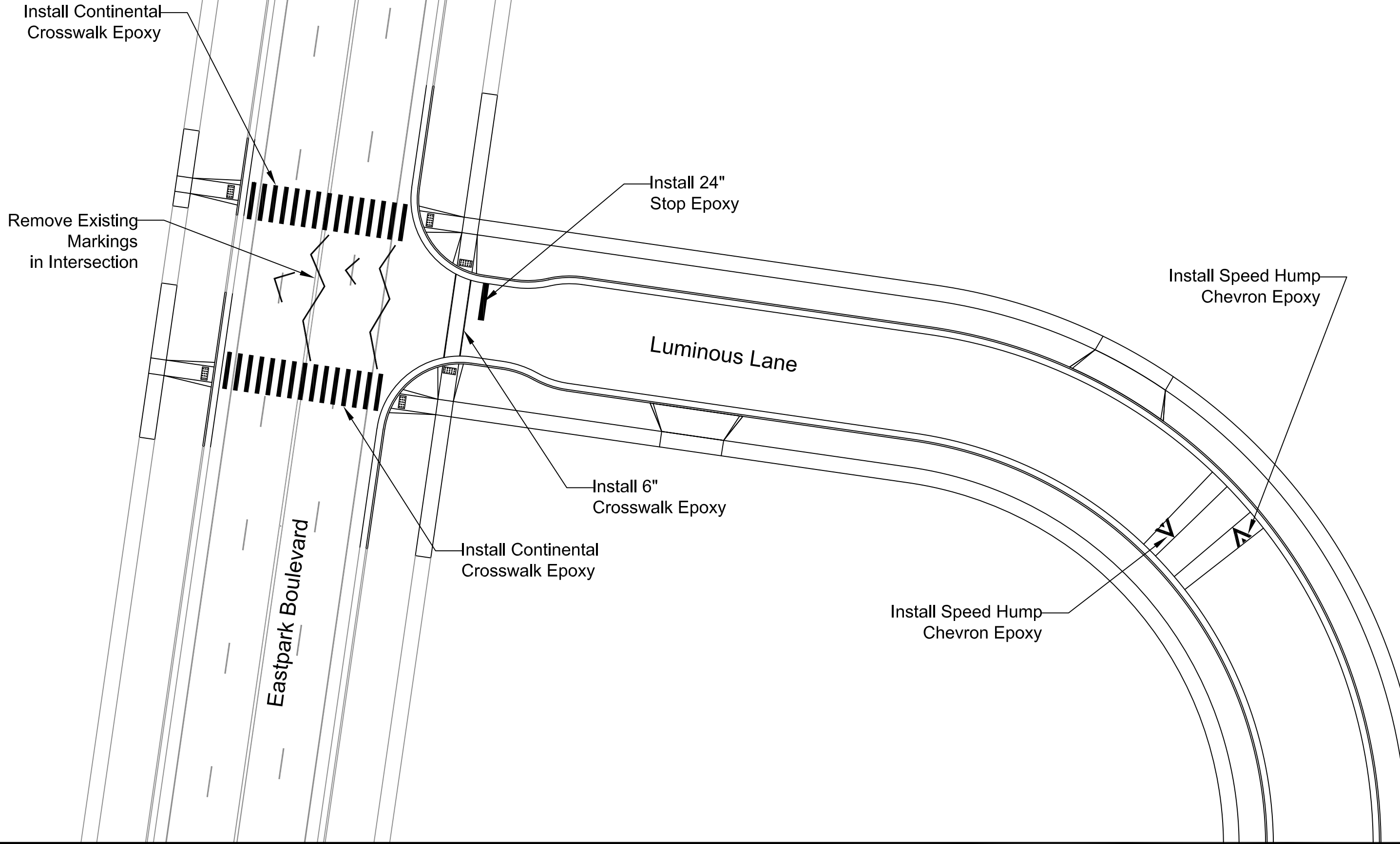
MARK	REVISION	DATE	BY
Designed By: GMA			Date: 8/28/2024 3:18 PM
14548			Scale: 1" = 30'

14548
 MADISON, WI
 CONTRACT NO: 9291

ELECTRICAL PLAN
 THE AMERICAN CENTER EASTPARK FIFTH ADDITION
 M:\DESIGN\Projects\14548\CAD\Traffic\14548TE-Electrical.dwg



14548
 E-2



MARK	REVISION	DATE	BY
14548	Designed By: SDM	Date: 10/9/2023 3:27 PM	Scale: 1:30
			M-1

14548
MADISON, WI
CONTRACT NO: 9291

MARKING PLAN
THE AMERICAN CENTER EASTPARK FIFTH ADDITION
M:\DESIGN\Projects\14548\CAD\Traffic\14548TE-PavementMarking.dwg



14548
M-1

Install 24"
Stop Epoxy

Luminous
Lane

Install 6"
Crosswalk
Epoxy

Dreamer Lane

Dreamer Lane

Luminous Lane



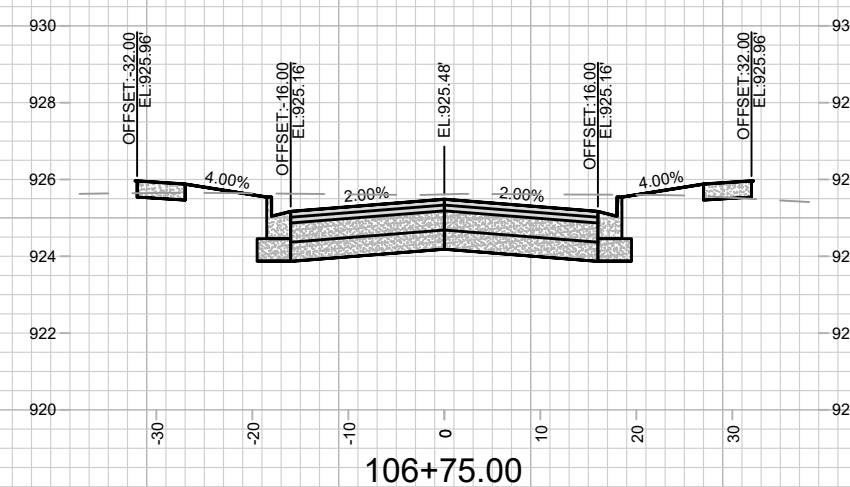
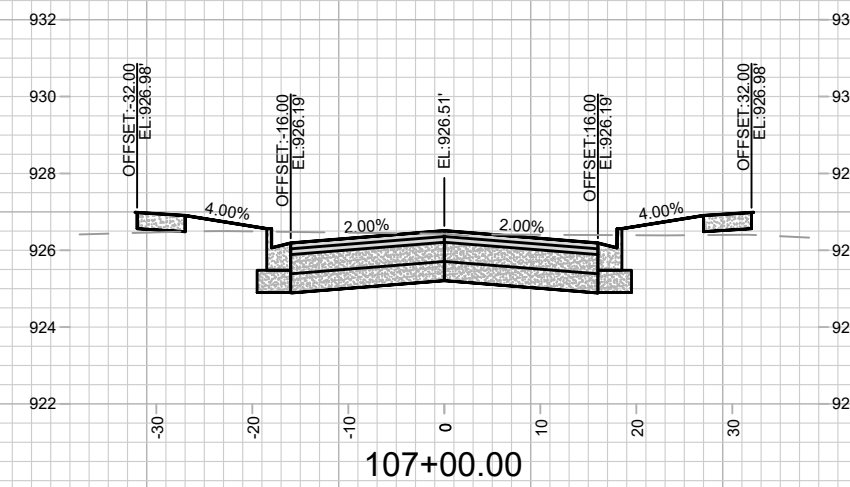
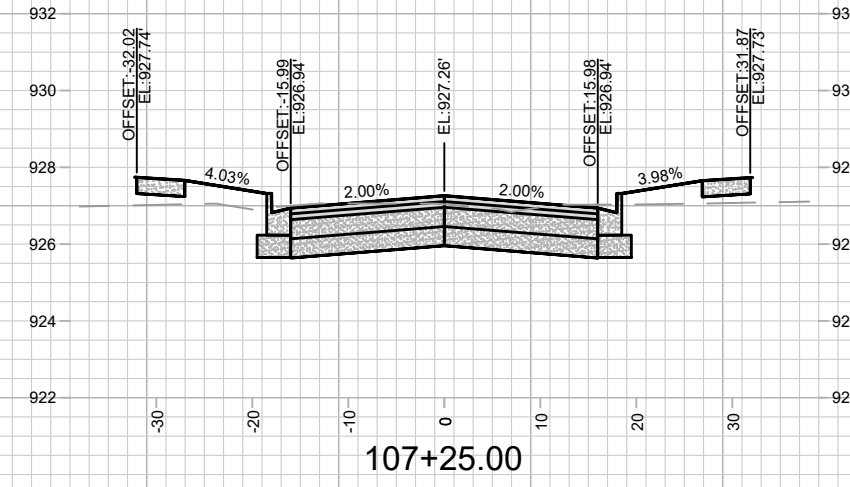
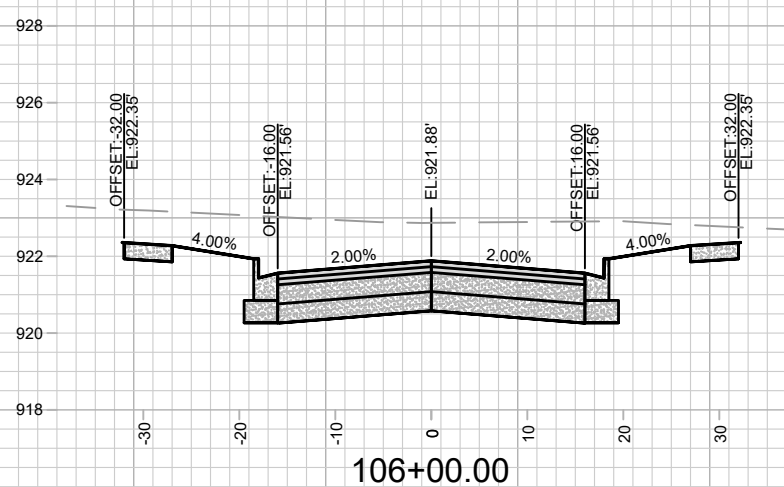
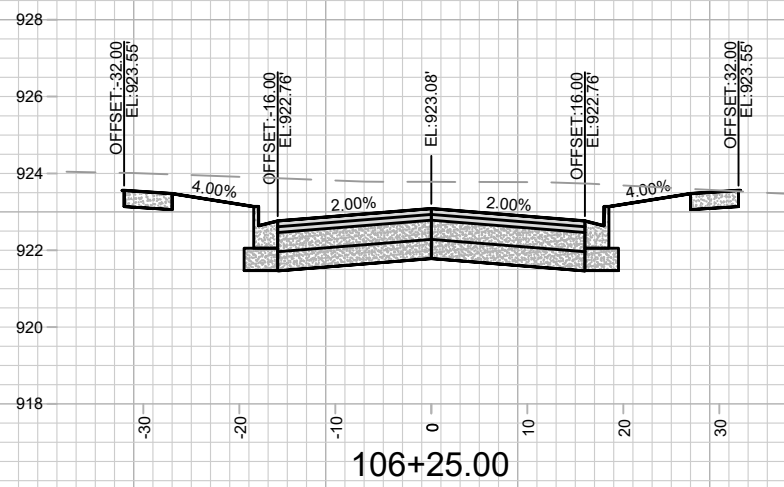
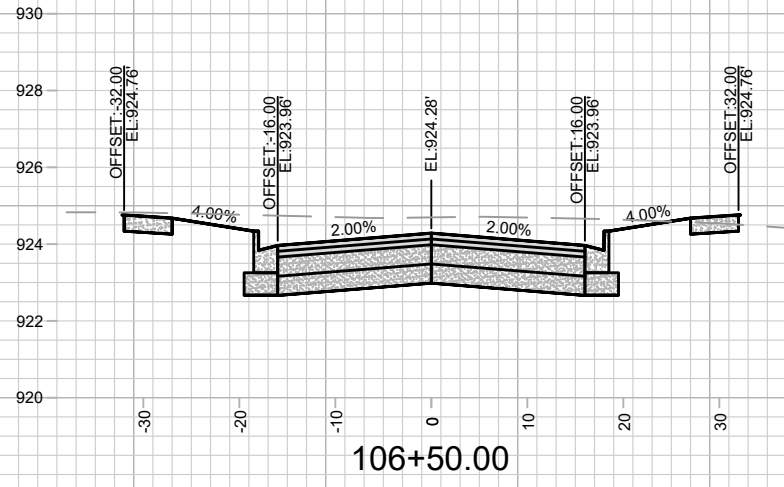
MARK	REVISION	DATE	BY
---	---	---	---
---	---	---	---
---	---	---	---

14548
MADISON, WI
9291

MARKING PLAN
THE AMERICAN CENTER EASTPARK FIFTH ADDITION
M:\DESIGN\Projects\14548\CAD\Traffic\14548TE-PavementMarking.dwg
CONTRACT NO:



14548
M-2

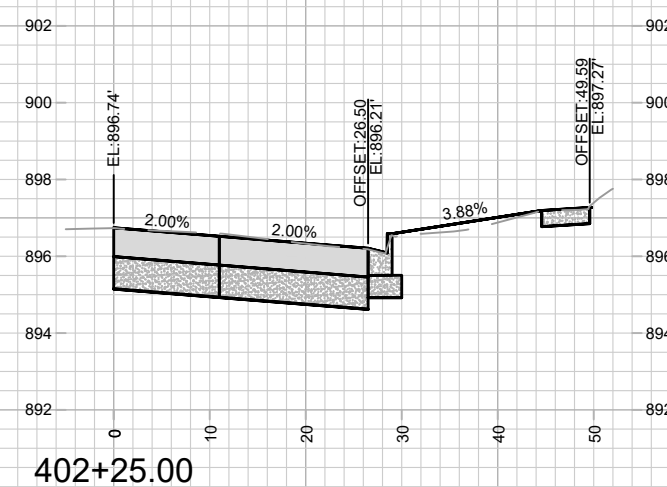
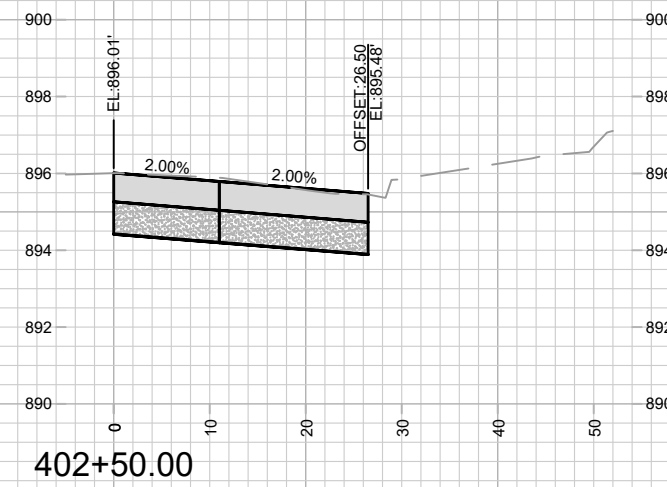
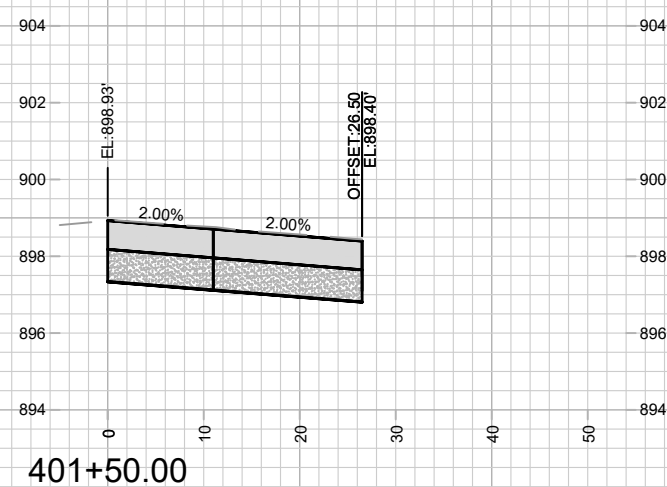
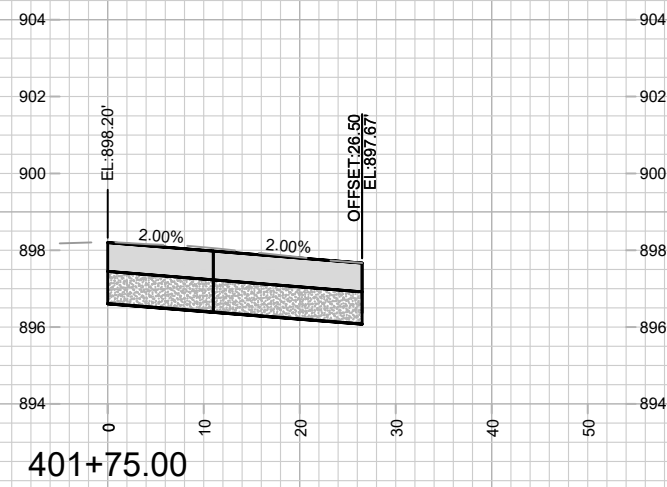
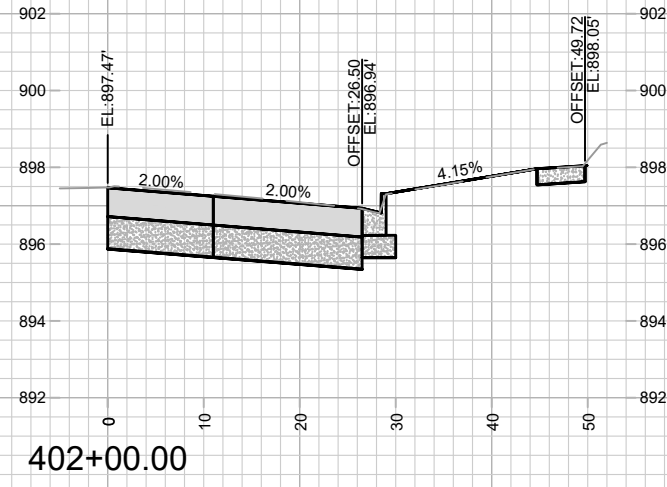
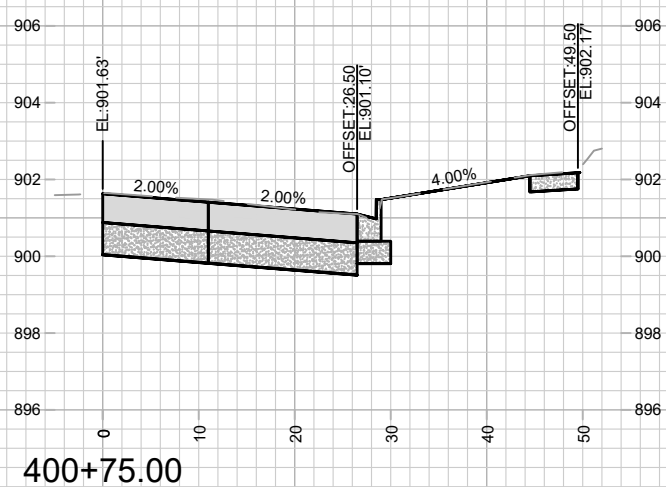
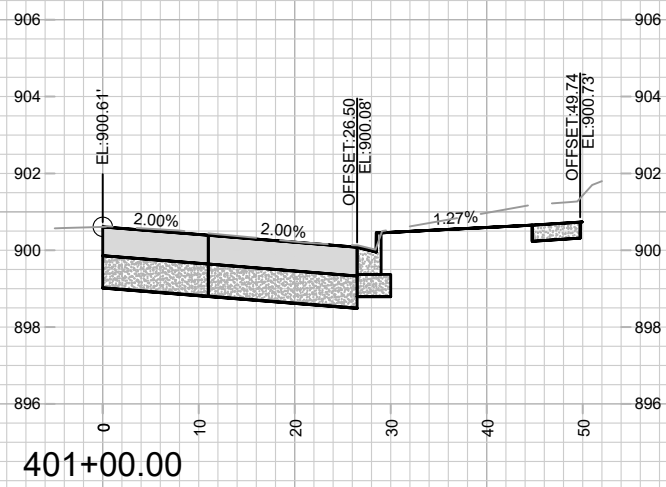
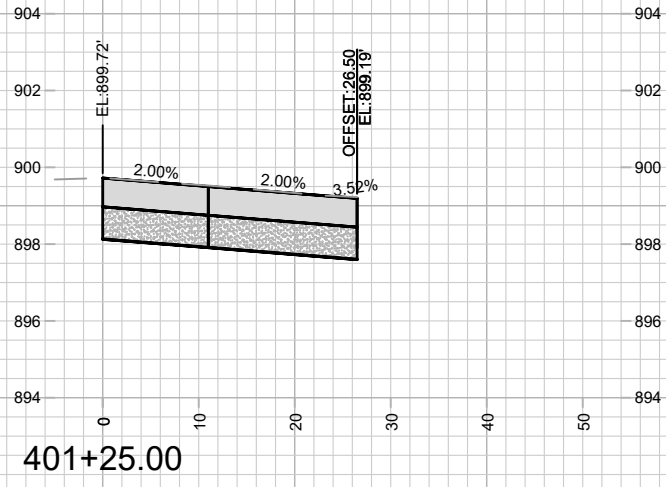


MARK	REVISION	DATE	BY
14548	14548	8/29/2024	14548
Designed By: NGV			Date: 8/29/2024 3:43 PM
Scale: #####			X-3

14548
 MADISON, WI
 CONTRACT NO: 9291
 CROSS SECTION - LUMINOUS LANE
 THE AMERICAN CENTER EASTPARK FIFTH ADDITION
 M:\DESIGN\Projects\14548\CAD\Streets\14548EN-Xsections.dwg



14548
 X-3



MARK	REVISION	DATE	BY

14548
MADISON, WI
9291
CONTRACT NO:

CROSS SECTION - EASTPARK BOULEVARD
THE AMERICAN CENTER EASTPARK FIFTH ADDITION
M:\DESIGN\Projects\14548\CAD\Streets\14548EN-Xsections.dwg



14548
X-4

