

Madison, Wisconsin

# CITY OF MADISON

## CITY ENGINEERING DIVISION

### DEPARTMENT OF PUBLIC WORKS

# PLAN OF PROPOSED IMPROVEMENT

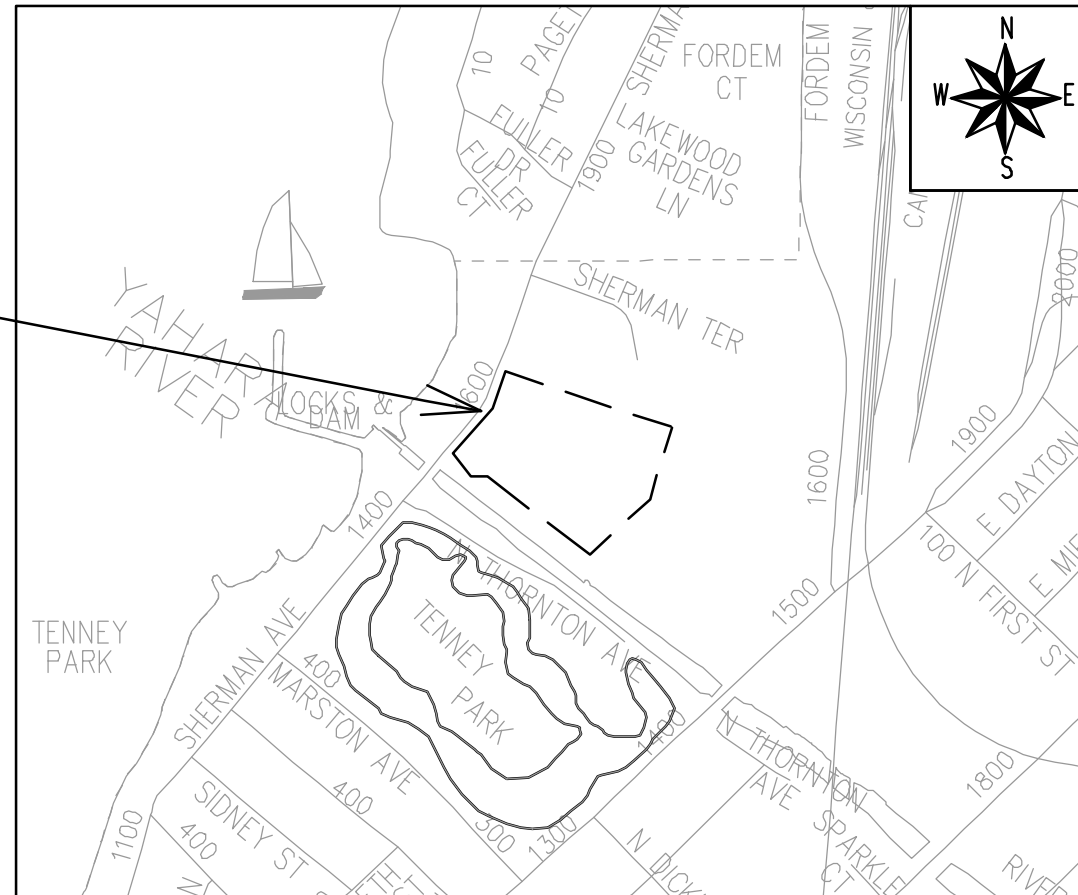
## 1601 - 1617 SHERMAN AVENUE CSM

**INDEX OF SHEETS**

SHEET NO. D1	STANDARD NOTES
SHEET NO. D2	TYPICAL SECTION
SHEET NO. D3	TREE EXCAVATION DETAIL
SHEET NO. D4	STORMWATER FACILITY DETAIL
SHEET NO. O1	OVERVIEW PLAN
SHEET NO. P1-P3	STREET PLAN & PROFILES
SHEET NO. U1-U3	UTILITY PLAN & PROFILES
SHEET NO. U4	SANITARY SEWER SCHEDULE
SHEET NO. U5	STORM SEWER SCHEDULE
SHEET NO. W1-W2	WATER PLAN & PROFILES
SHEET NO. W3	WATER IMPACT PLAN
SHEET NO. W4	WATER ESTIMATE OF MATERIALS
SHEET NO. E1	ELECTRICAL PLAN
SHEET NO. PM1	MARKING PLANS
SHEET NO. L1	LANDSCAPING PLAN
SHEET NO. X1-X5	CROSS SECTIONS
SHEET NO. MN1	MAINTENANCE PLAN (CITY USE ONLY)

CITY PROJECT NO. 14792  
CONTRACT NO. 9332

**PROJECT  
LOCATION**



**REVISION 1 - 08/22/24**  
**- UPDATED SHEETS: U1-U2, U-4, W1-W4, L1**

PUBLIC IMPROVEMENT PROJECT APPROVED

OCTOBER 17, 2023

BY THE COMMON COUNCIL OF MADISON, WISCONSIN

PUBLIC IMPROVEMENT DESIGN APPROVED BY:

*Julie* Jun 26, 2024

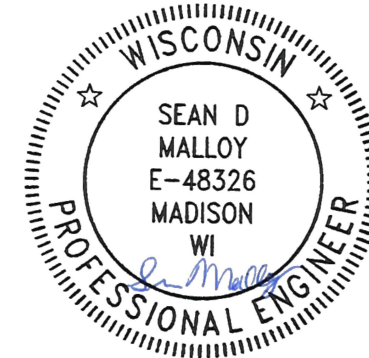
City Engineer Date

STREET DESIGNED BY:



Jun 26, 2024

STREET GEOMETRY AND MARKINGS DESIGNED BY:



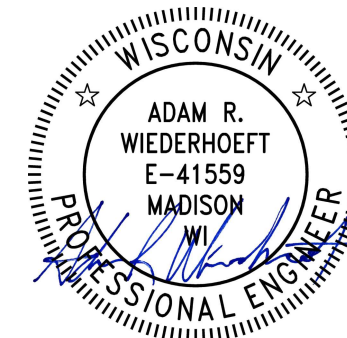
Jun 27, 2024

STORM SEWER DESIGNED BY:



Jun 27, 2024

WATER DESIGNED BY:



Jun 26, 2024

SANITARY SEWER DESIGNED BY:



Jun 26, 2024

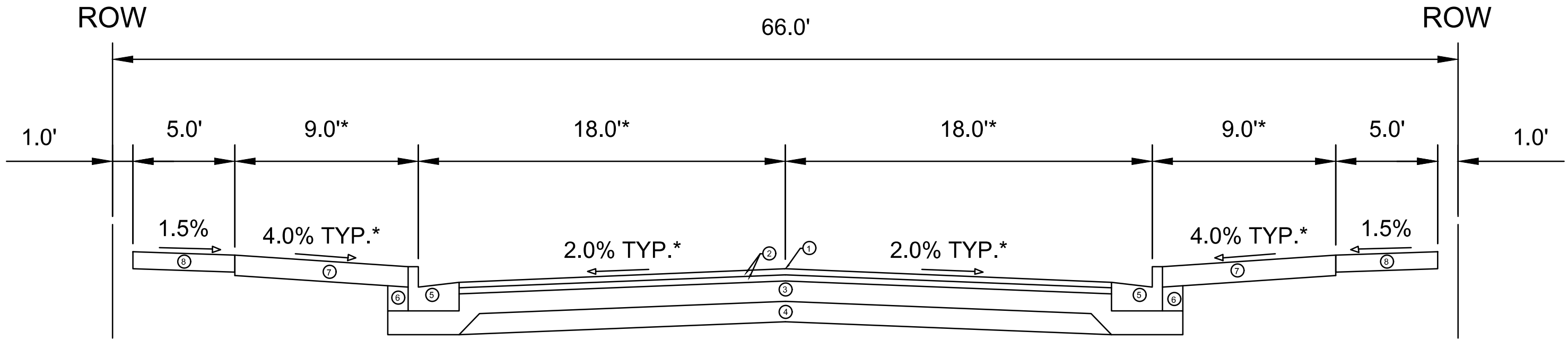
PLOT SCALE: 1 IN = 1 FT XREF

PLOT NAME: ---

REV. DATE: 6/20/2024 8:00 AM

ORIGINATOR: CITY OF MADISON





TYPICAL SECTION  
LOCK LANE

NOTES:

\* SEE P AND X-SHEETS FOR CROSS SLOPES AND WIDTHS

- ① POINT REFERRED TO ON PROFILE
- ② 1.75" H.M.A. PAVEMENT - TYPE 4 LT 58-28 S
- ③ 6" CRUSHED AGGREGATE BASE COURSE GRADATION 2
- ④ 6" CRUSHED AGGREGATE BASE COURSE GRADATION 1
- ⑤ CONCRETE CURB AND GUTTER TYPE 'A'
- ⑥ FILL
- ⑦ 6" TOPSOIL, SEED AND MATTING
- ⑧ 5" CONCRETE SIDEWALK, 7" AT DRIVEWAY LOCATIONS

DATE	BT
RFVISION	
DATE: 07/2024 8:18 AM	Scale:
Designed By: ###	14792

14792  
MADISON, WI  
9332  
CONTRACT NO:

TYPICAL SECTION - LOCK LANE  
1601 - 1617 SHERMAN AVENUE CSM  
M:\DESIGN\Projects\14792\CAD\Streets\14792EN-Details.dwg

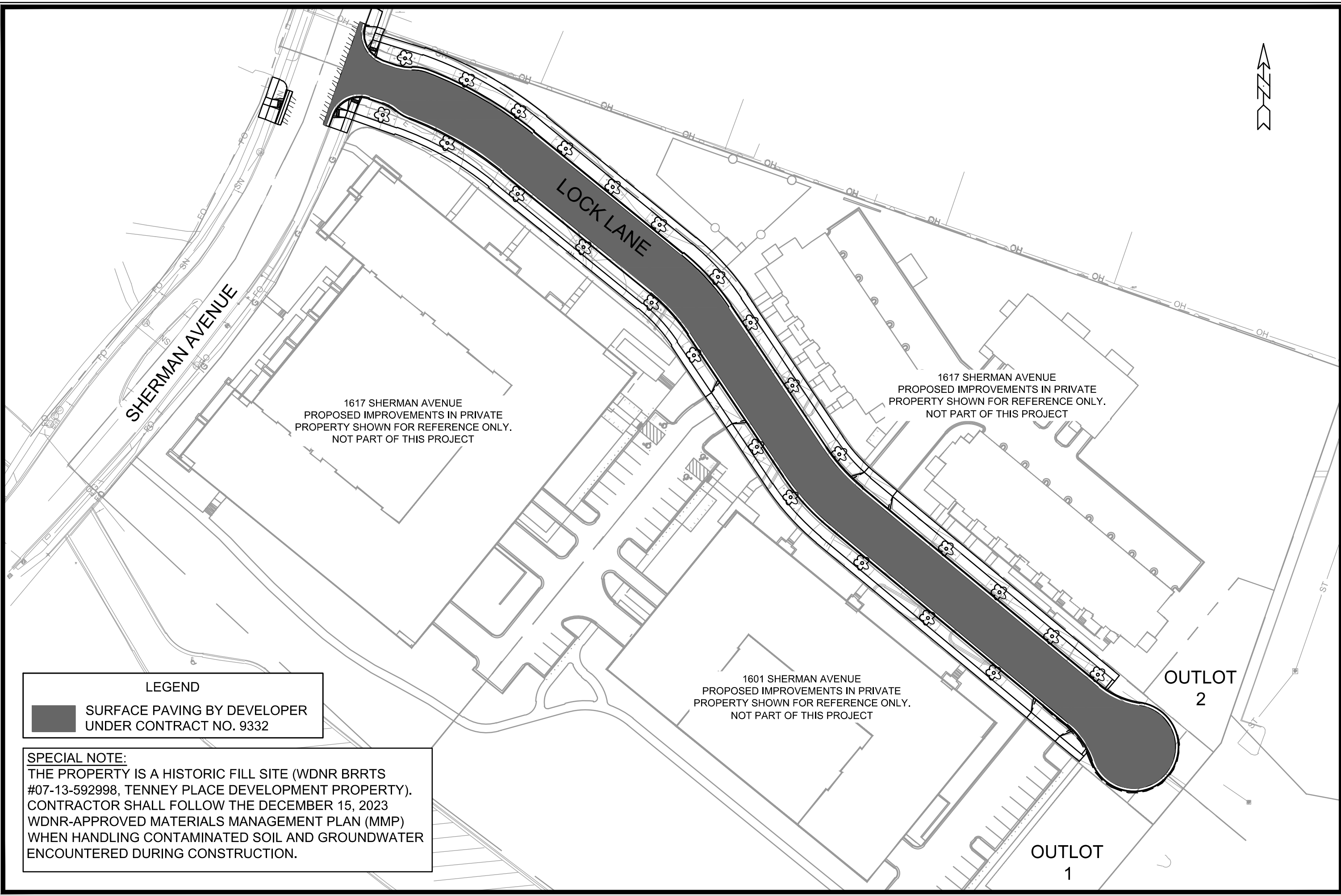


14792  
D-2









**LEGEND**

 SURFACE PAVING BY DEVELOPER UNDER CONTRACT NO. 9332

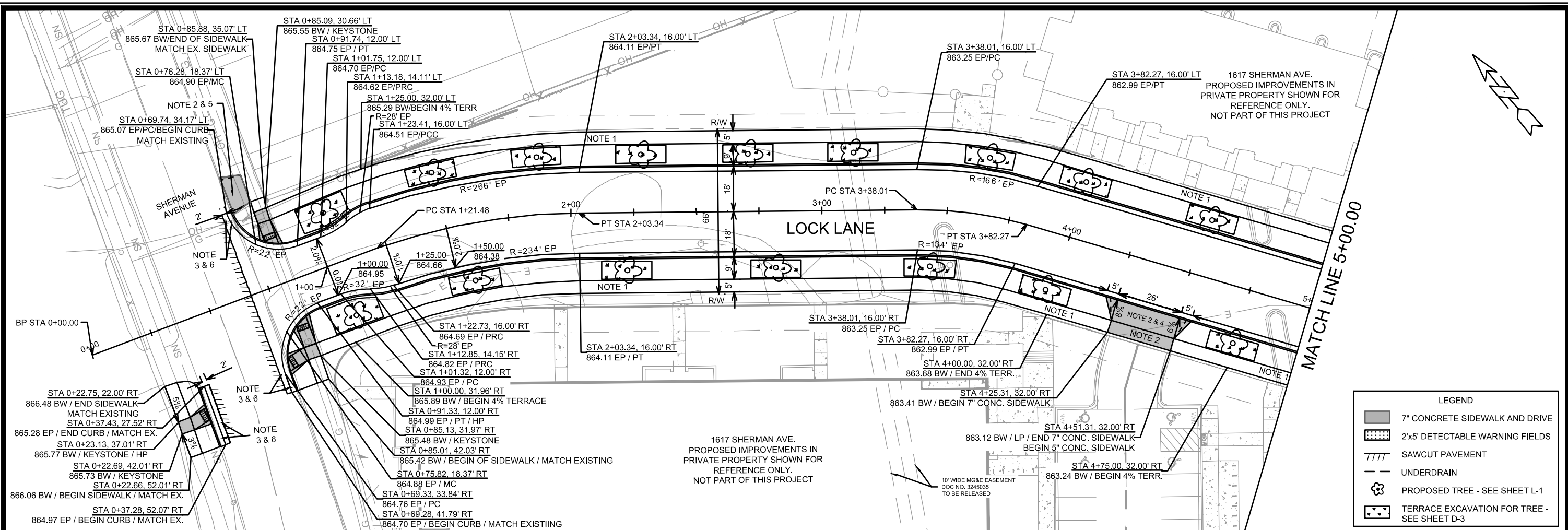
**SPECIAL NOTE:**  
 THE PROPERTY IS A HISTORIC FILL SITE (WDNR BRRTS #07-13-592998, TENNEY PLACE DEVELOPMENT PROPERTY). CONTRACTOR SHALL FOLLOW THE DECEMBER 15, 2023 WDNR-APPROVED MATERIALS MANAGEMENT PLAN (MMP) WHEN HANDLING CONTAMINATED SOIL AND GROUNDWATER ENCOUNTERED DURING CONSTRUCTION.

MARK	REVISION	DATE	BY

14792  
 MADISON, WI  
 CONTRACT NO: 9332

OVERVIEW PLAN  
 1601 - 1617 SHERMAN AVENUE CSM  
 M:\DESIGN\Projects\14792\CAD\Streets\14792EN-OverviewPlan.dwg

  
 14792  
 0-1

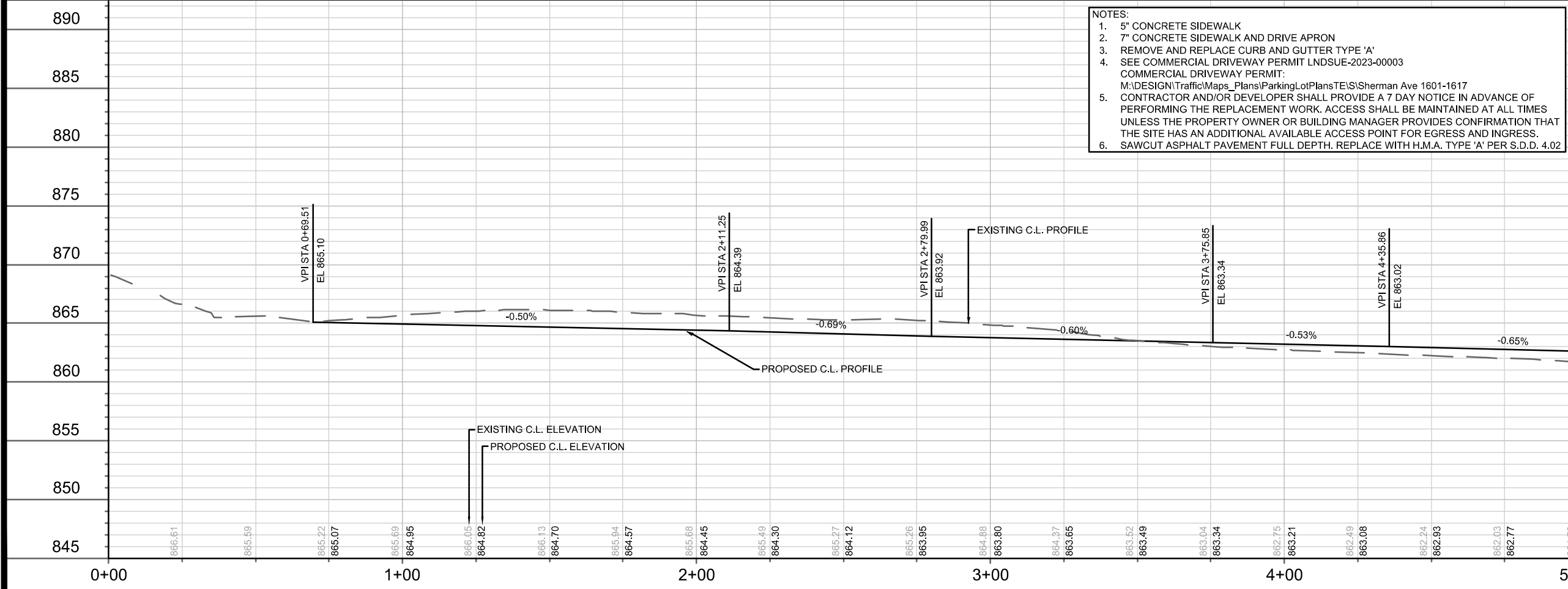


**LEGEND**

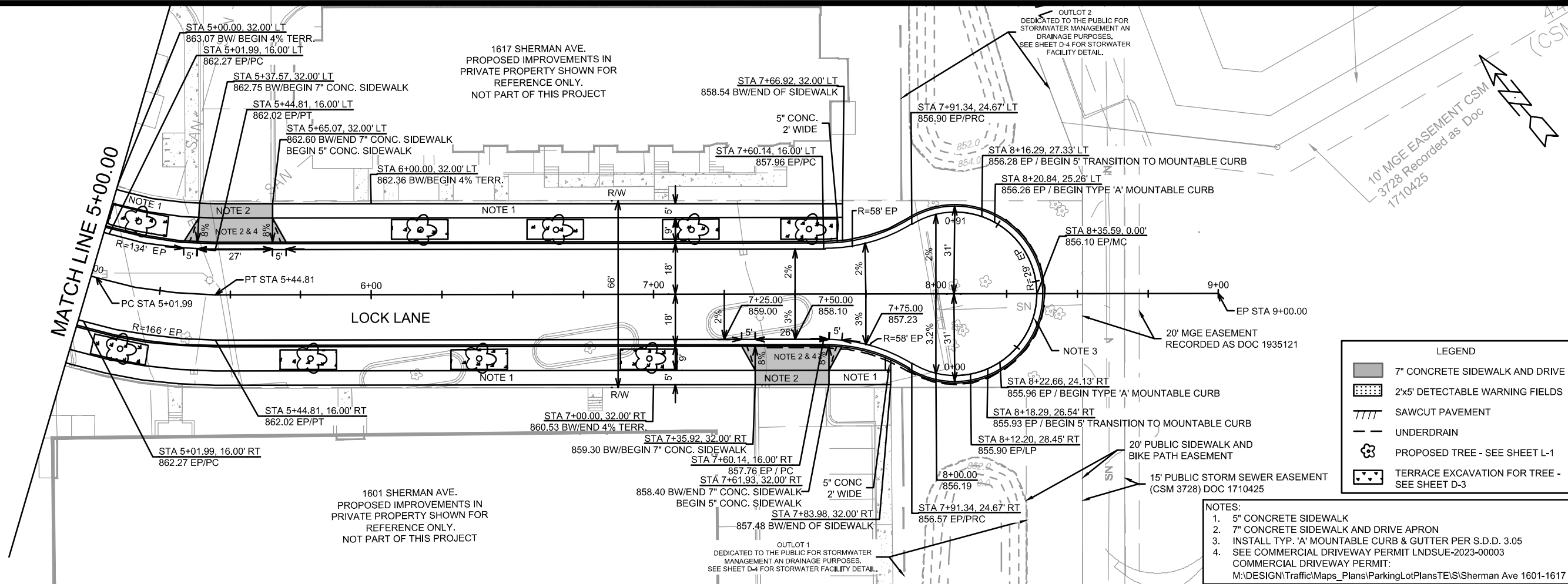
- 7" CONCRETE SIDEWALK AND DRIVE
- 2x5' DETECTABLE WARNING FIELDS
- SAWCUT PAVEMENT
- UNDERDRAIN
- PROPOSED TREE - SEE SHEET L-1
- TERRACE EXCAVATION FOR TREE - SEE SHEET D-3

**NOTES:**

1. 5" CONCRETE SIDEWALK
2. 7" CONCRETE SIDEWALK AND DRIVE APRON
3. REMOVE AND REPLACE CURB AND GUTTER TYPE 'A'
4. SEE COMMERCIAL DRIVEWAY PERMIT LNSUE-2023-00003 COMMERCIAL DRIVEWAY PERMIT:  
M:\DESIGN\Traffic\Maps\_Plans\ParkingLotPlans\TE\IS\Sherman Ave 1601-1617 CONTRACTOR AND/OR DEVELOPER SHALL PROVIDE A 7 DAY NOTICE IN ADVANCE OF PERFORMING THE REPLACEMENT WORK. ACCESS SHALL BE MAINTAINED AT ALL TIMES UNLESS THE PROPERTY OWNER OR BUILDING MANAGER PROVIDES CONFIRMATION THAT THE SITE HAS AN ADDITIONAL AVAILABLE ACCESS POINT FOR EGRESS AND INGRESS.
- 5.
6. SAWCUT ASPHALT PAVEMENT FULL DEPTH. REPLACE WITH H.M.A. TYPE 'A' PER S.D.D. 4.02



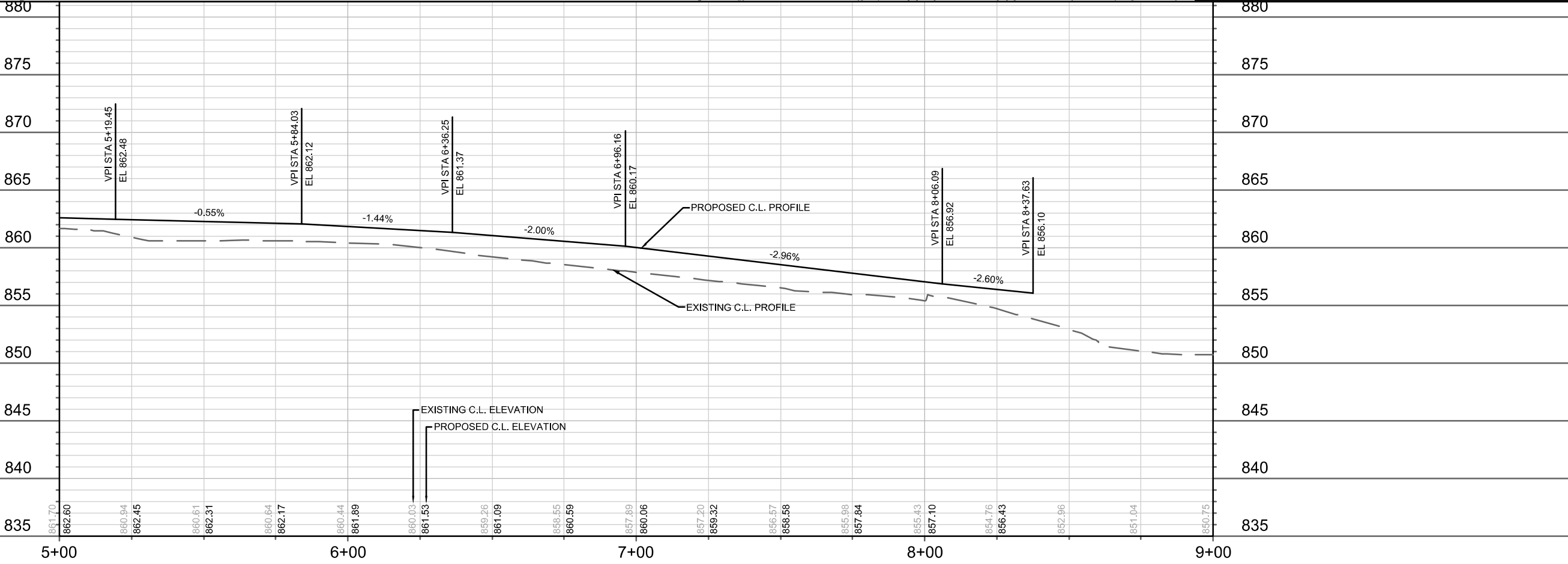
14792	MADISON, WI	9332	CONTRACT NO:	14792	P-1
<p>PLAN AND PROFILE - LOCK LANE</p> <p>1601 - 1617 SHERMAN AVENUE CSM</p> <p>M:\DESIGN\Projects\14792\CAD\Streets\14792EN-P\IP.dwg</p>					
<p>14792</p> <p>P-1</p>					



**LEGEND**

- 7" CONCRETE SIDEWALK AND DRIVE
- 2'x5' DETECTABLE WARNING FIELDS
- SAWCUT PAVEMENT
- UNDERDRAIN
- PROPOSED TREE - SEE SHEET L-1
- TERRACE EXCAVATION FOR TREE - SEE SHEET D-3

- NOTES:**
1. 5" CONCRETE SIDEWALK
  2. 7" CONCRETE SIDEWALK AND DRIVE APRON
  3. INSTALL TYP. 'A' MOUNTABLE CURB & GUTTER PER S.D.D. 3.05
  4. SEE COMMERCIAL DRIVEWAY PERMIT LND3UE-2023-00003
- COMMERCIAL DRIVEWAY PERMIT:  
M:\DESIGN\Traffic\Maps\_Plans\ParkingLotPlans\TE\IS\Sherman Ave 1601-1617

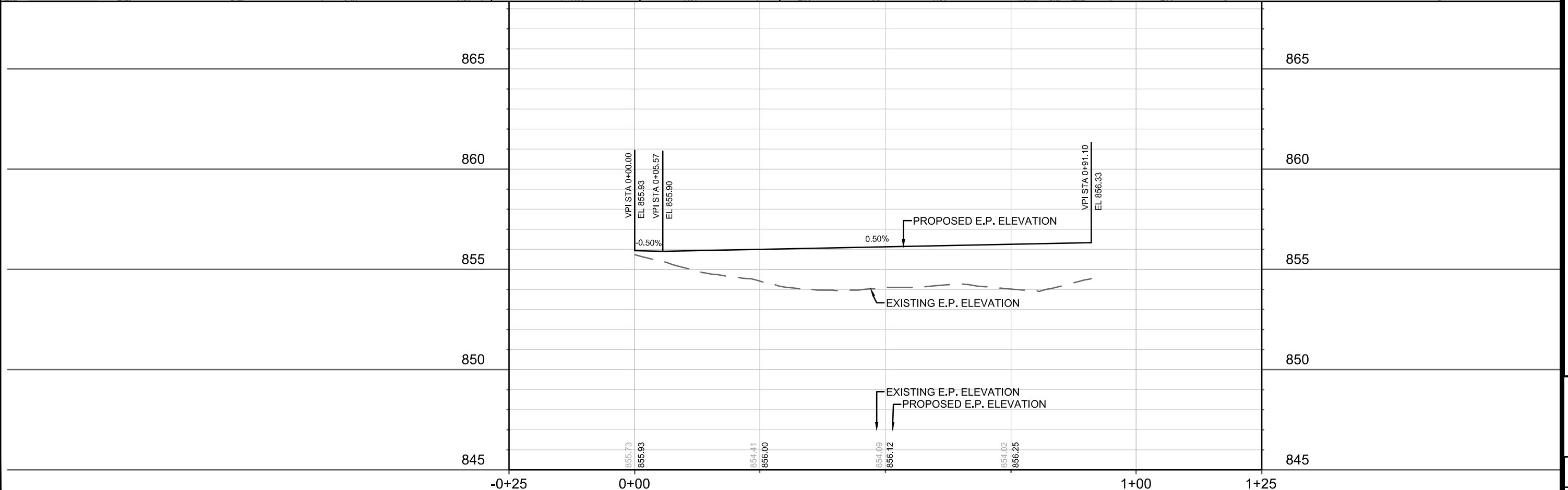
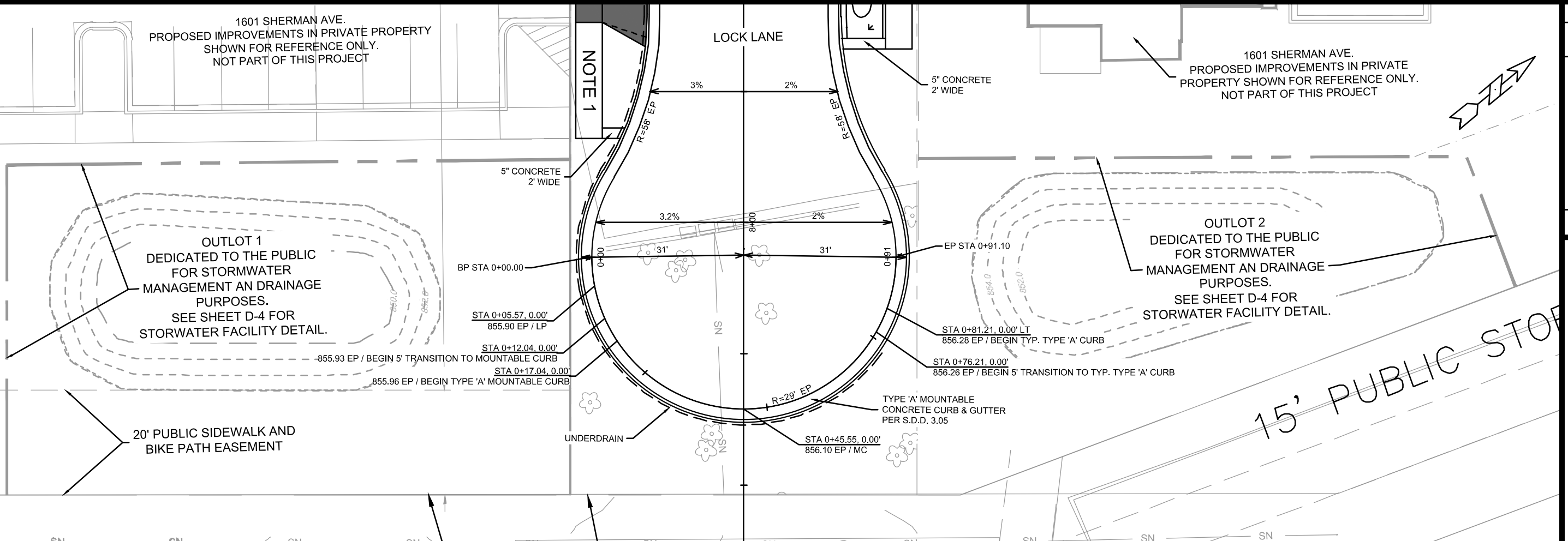


14792	MADISON, WI	9332	CONTRACT NO:	14792	P-2
PLAN AND PROFILE - LOCK LANE					
1601 - 1617 SHERMAN AVENUE CSM					
M:\DESIGN\Projects\14792\CAD\Streets\14792EN-P\P.dwg					
14792					
P-2					

1601 SHERMAN AVE.  
PROPOSED IMPROVEMENTS IN PRIVATE PROPERTY  
SHOWN FOR REFERENCE ONLY.  
NOT PART OF THIS PROJECT

1601 SHERMAN AVE.  
PROPOSED IMPROVEMENTS IN PRIVATE  
PROPERTY SHOWN FOR REFERENCE ONLY.  
NOT PART OF THIS PROJECT

NOTE 1



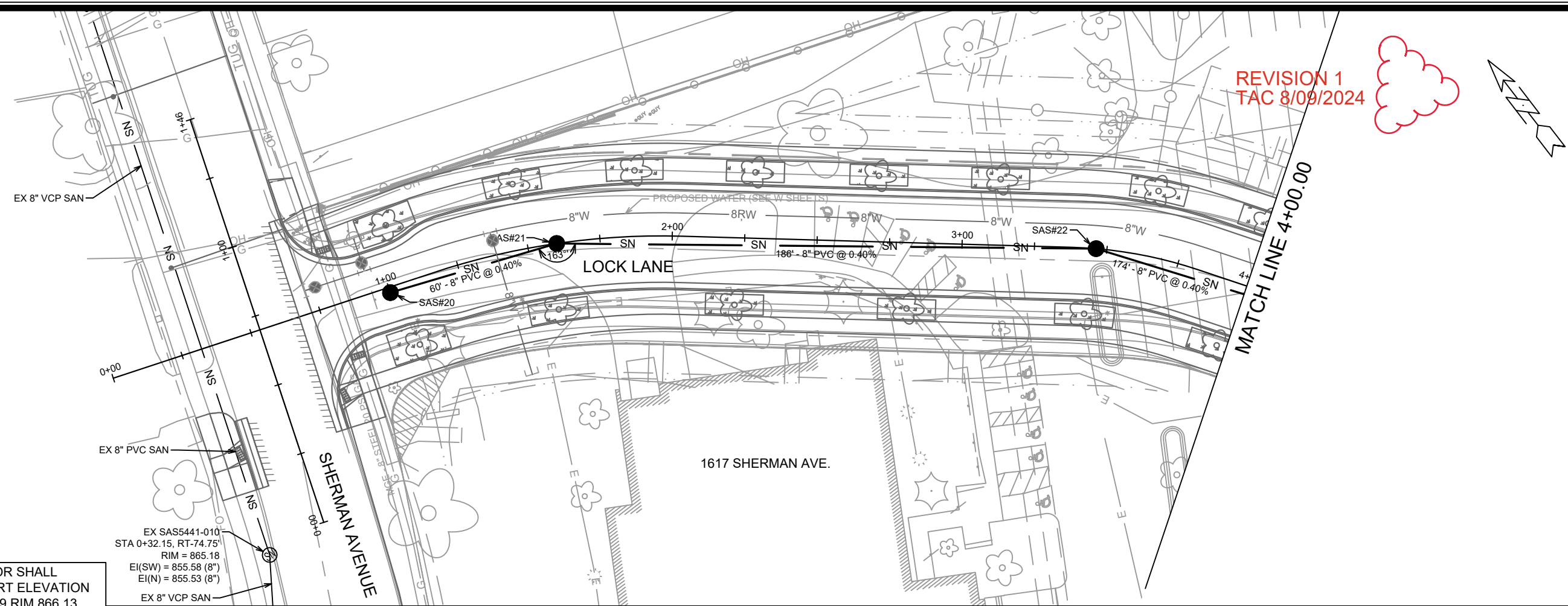
DATE	BY
REVISION	
Designated By: ###	Date: 6/26/2024 8:54 AM
14792	Scale: 1:20
14792	P-3

14792  
MADISON, WI  
9332  
CONTRACT NO:

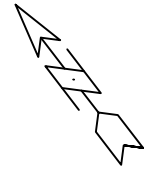
PLAN & PROFILE - LOCK LANE (CUL-DE-SAC)  
1601 - 1617 SHERMAN AVENUE CSM  
M:\DESIGN\Projects\14792\CAD\Streets\14792EN-P\IP.dwg

14792  
P-3



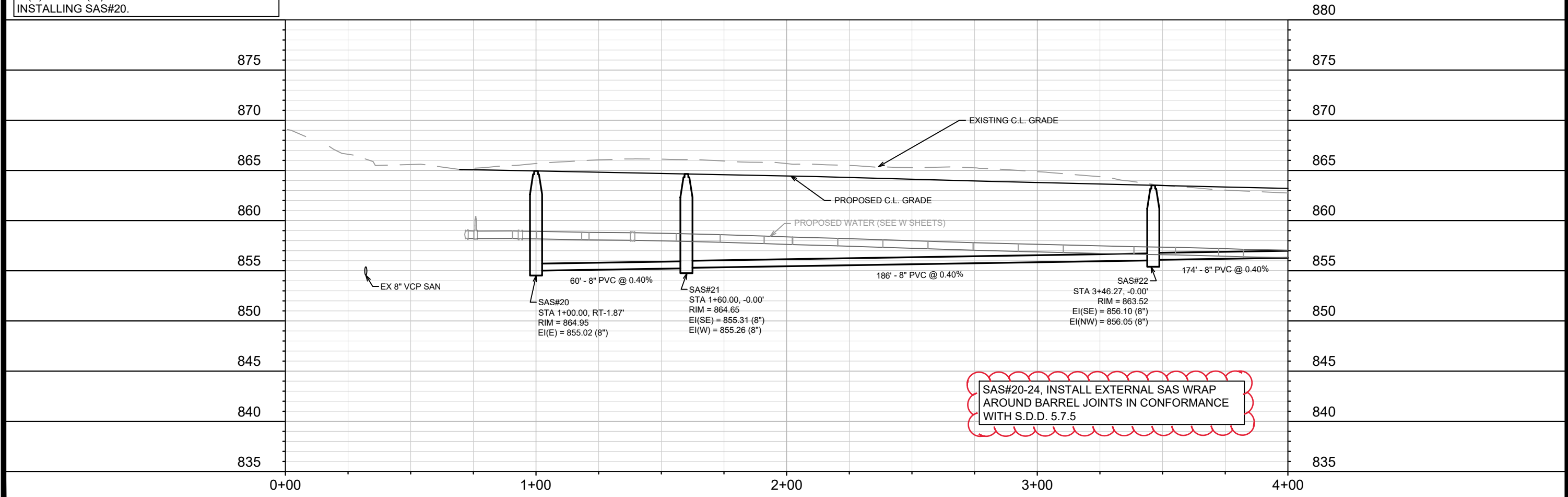


REVISION 1  
TAC 8/09/2024



NOTE: DEVELOPER'S SURVEYOR SHALL CHECK & CONFIRM THAT INVERT ELEVATION OF FUTURE SAS AT STA 0+32.09 RIM 866.13 EI(E)=854.75 (8") WILL WORK PRIOR TO INSTALLING SAS#20.

EX SAS5441-010  
STA 0+32.15, RT-74.75'  
RIM = 865.18  
EI(SW) = 855.58 (8")  
EI(N) = 855.53 (8")  
EX 8" VCP SAN



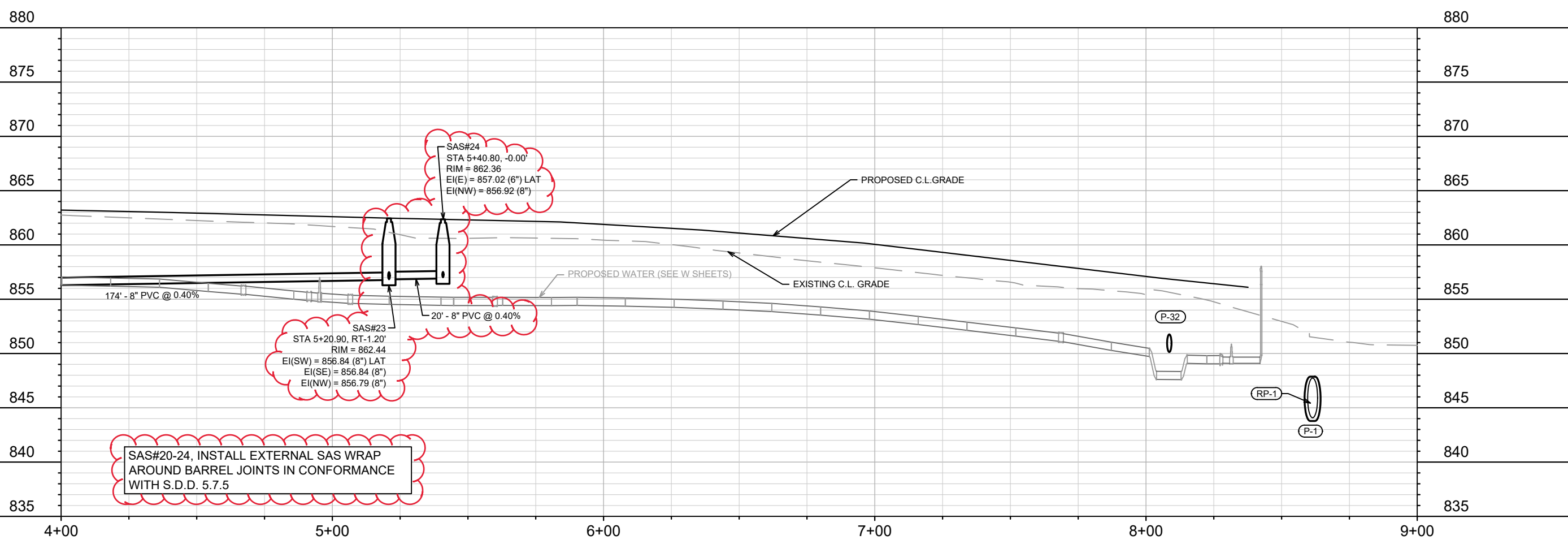
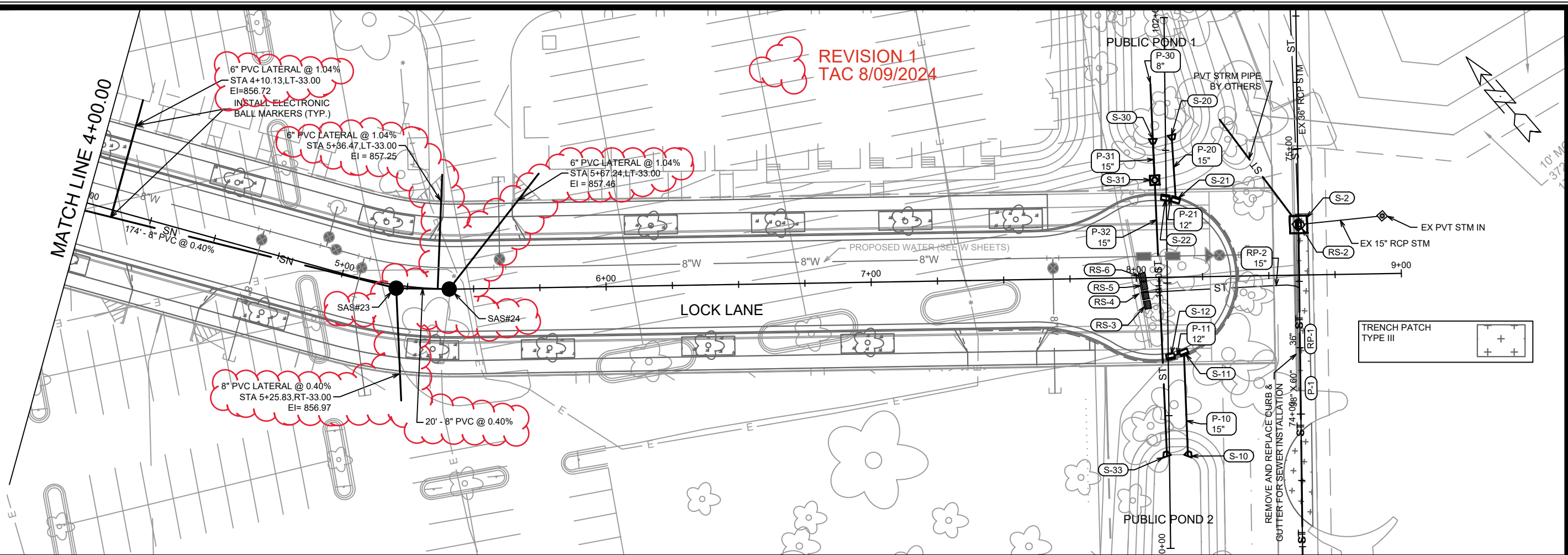
MARK	REVISION	DATE	BY
14792	U-1	8/13/2024 11:32 AM	

14792  
MADISON, WI  
9332  
CONTRACT NO:

UTILITY PLAN & PROFILE LOCK LANE  
1601 - 1617 SHERMAN AVENUE CSM  
M:\DESIGN\Projects\14792\CAD\Sewers\14792SWR-PipeNetwork.dwg



14792  
U-1



SAS#20-24, INSTALL EXTERNAL SAS WRAP AROUND BARREL JOINTS IN CONFORMANCE WITH S.D.D. 5.7.5

14792	MADISON, WI	9332	U-2
UTILITY PLAN & PROFILE LOCK LANE		1601 - 1617 SHERMAN AVENUE CSM	
M:\DESIGN\Projects\14792\CAD\Sewers\14792SWR-PipeNetwork.dwg			
14792		U-2	



# SANITARY SEWER SCHEDULE

\* REVISION 1 TAC 8/9/2024

1601-1617 SHERMAN AVENUE

SHEET NO.

PROJECT NO. 14792

U-4

SANITARY SEWER SCHEDULE

CITY OF MADISON

## PROPOSED SANITARY STRUCTURES

SAS NO.	STATION	LOCATION (OFFSET)	TOP OF CASTING	E.I.	DEPTH	NOTES
<b>LOCK LANE</b>						
SAS#20	1+00.00	RT-1.87	864.95	855.02	9.93	TEMP SAS
SAS#21	1+60.00	CL	864.65	855.26	9.39	[1]
SAS#22	3+46.27	CL	863.52	856.05	7.47	[1]
SAS#23	5+20.90	RT-1.20	862.44	856.79	5.65	[1]
* SAS#24	<b>5+40.80</b>	<b>CL</b>	<b>862.36</b>	<b>856.92</b>	<b>5.44</b>	[1]

## PROPOSED SANITARY PIPES

FROM (DNSTM)	TO (UPSTM)	DWNSTRM E.I.	UPSTRM E.I.	PLAN (PAY) LGTH (FT)	SLOPE (%)	PIPE SIZE	PVC TYPE	NOTES
<b>LOCK LANE</b>								
SAS#20	SAS#21	855.02	855.26	60	0.40%	8"	SDR-35	-
SAS#21	SAS#22	855.31	856.05	186	0.40%	8"	SDR-35	-
SAS#22	SAS#23	856.10	856.79	174	0.40%	8"	SDR-35	-
* SAS#23	<b>SAS#24</b>	<b>856.84</b>	<b>856.92</b>	<b>20</b>	<b>0.40%</b>	<b>8"</b>	<b>SDR-35</b>	-

## SPECIFIC NOTES

\* [1] INSTALL EXTERNAL SAS WRAP AROUND BARREL JOINTS IN CONFORMANCE WITH S.D.D. 5.7.5

# STORM SEWER SCHEDULE

1601-1617 SHERMAN AVENUE  
PROJECT NO. 14792

SHEET NO.  
U-5

STORM SEWER SCHEDULE

CITY OF MADISON

## PROPOSED STORM STRUCTURES

STRUC. NO.	STATION	LOCATION (OFFSET)	TYPE	TOP OF CASTING	E.I.	DEPTH	NOTES
<b>LOCK LANE</b>							
S-10	8+18.38	RT-67.52	15" AE	-	850.00	-	-
S-11	8+17.50	RT-28.44	H INLET	856.31	852.57	3.74	W/R-3067-7004-V
S-12	8+12.75	RT-29.90	H INLET	856.28	852.94	3.34	LP,W/R-3067-7004-VB
S-20	8+14.23	LT-53.60	15" AE W/ GATE	-	852.00	-	-
S-21	8+15.37	LT-29.17	H INLET	856.67	852.93	3.74	W/R-3067-7004-V
S-22	8+11.44	LT-30.07	H INLET	856.69	853.35	3.34	W/R-3067-7004-V
S-30	8+07.12	LT-52.22	15" AE W/ GATE	-	852.00	-	-
S-31	8+07.56	LT-36.68	3'X3' STORM SAS	857.20	850.50	6.70	W/ R-1550-0054 [2]
S-33	8+10.49	RT-67.43	15" AE W/ GATE	-	850.00	-	-
<b>STORM EASEMENT</b>							
S-1	8+59.78	RT-415.71		-	843.24	-	[1]
S-2	8+61.50	LT-19.04	6'X6' CATCHBASIN	851.36	844.29	7.07	FP,W/ TWO R-1550-0054 (3' SUMP)

## REMOVE STORM STRUCTURES

STRUC. NO.	STATION	LOCATION (OFFSET)	TYPE	TOP OF CASTING	E.I.	DEPTH	NOTES
<b>LOCK LANE</b>							
RS-3	8+03.75	RT-10.27	H INLET	XX	XX	UNKNOWN	PVT IN
RS-4	8+01.84	RT-5.63	H INLET	XX	XX	UNKNOWN	PVT IN
RS-5	8+02.51	RT-2.99	H INLET	XX	XX	UNKNOWN	PVT IN
RS-6	8+01.96	LT-0.32	H INLET	XX	XX	UNKNOWN	PVT IN
<b>STORM EASEMENT</b>							
RS-1	8+59.78	RT-415.71	36" AE	-	843.41	-	-
RS-2	8+61.50	LT-19.04	3'X3' STORM SAS	851.36	844.46	6.90	UN-NUMBERED INLET

## PROPOSED STORM PIPES

PIPE NO.	FROM (DNSTM)	TO (UPSTM)	DISCH. E.I.	INLET E.I.	PLAN (PAY) LGTH (FT)	PIPE LGTH (FT)	SLOPE (%)	PIPE SIZE	TYPE	NOTES
<b>LOCK LANE</b>										
P-10	S-10	S-11	850.00	852.57	39	38	6.74%	15"	TYPE II	-
P-11	S-11	S-12	852.82	852.94	6	2	5.06%	12"	TYPE I - RCP	-
P-20	S-20	S-21	852.00	852.93	25	23	3.97%	15"	TYPE II	-
P-21	S-21	S-22	853.18	853.35	4	1	15.04%	12"	TYPE I - RCP	-
P-30	8+06.53, LT-73.34	S-31	850.50	850.50	37	35	0.00%	8"	UNDERDRAIN	[3]
P-31	S-31	S-30	851.92	852.00	16	14	0.56%	15"	TYPE II	-
P-32	S-33	S-31	850.00	850.50	104	103	0.49%	15"	TYPE I - RCP	-
<b>STORM EASEMENT</b>										
P-1	S-1	S-2	843.24	844.29	435.00	432	0.24%	38" X 60"	HERCP	-

## REMOVE STORM PIPES

REMOVE NO.	REMOVE FROM	REMOVE TO	LGTH (FT)	PAY LGTH (FT)	PIPE SIZE	PIPE TYPE	NOTES
<b>LOCK LANE</b>							
RP-2	RP-1	RP-2	60	60	XX	XX	UNKOWN PVT PIPE
<b>STORM EASEMENT</b>							
RP-1	RS-1	RS-2	435	0	36"	RCP	-

**NOTE:** PLAN LENGTH (PAY LENGTH) IS FROM CENTER OF STRUCTURE TO CENTER OF STRUCTURE. PIPE LENGTH IS ACTUAL LENGTH OF PIPE FROM STRUCTURE WALL TO STRUCTURE WALL. SLOPE CALCULATED USING PIPE LENGTH.

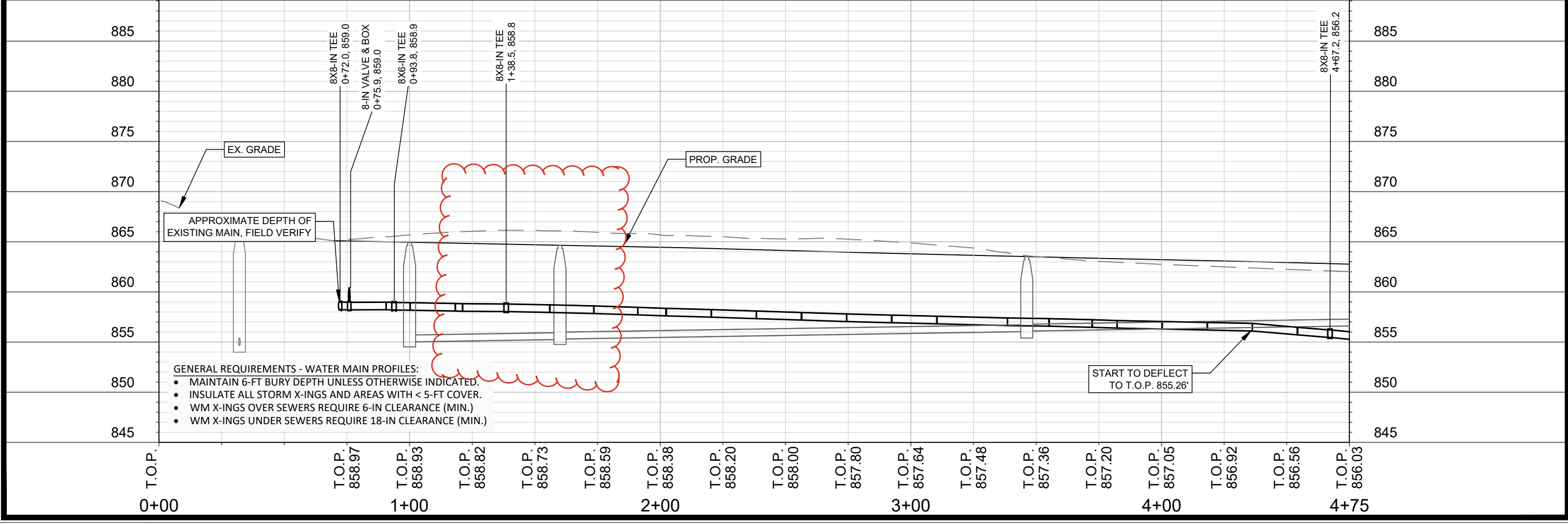
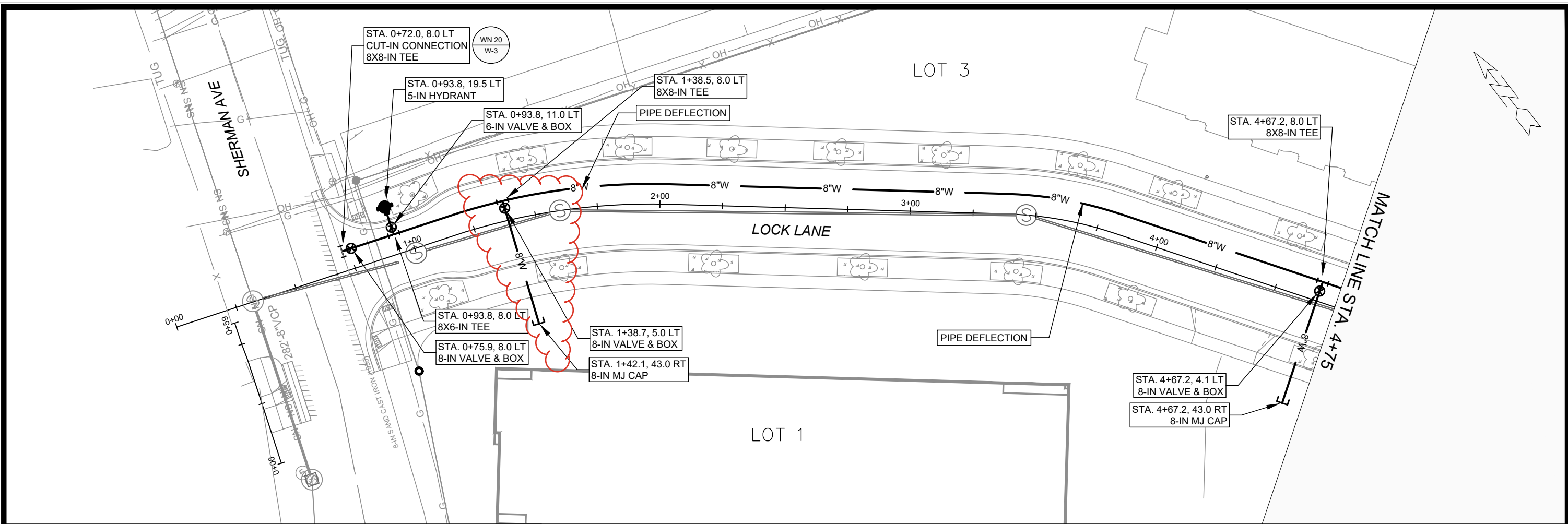
## SPECIFIC NOTES

- [1] REMOVE & SALVAGE SHORELINE RIPRAP, INSTALL PIPE & AE, BACKFILL WITH CLAY GENERAL FILL, GRADE, INSTALL FILTER FABRIC (PAID AS BID ITEM 20256 - RIPRAP FILTER FABRIC, TYPE HR), AND REINSTALL SHORELINE RIPRAP
- [2] WEIR WALL INSIDE SAS SET TO EL = 854.00
- [3] PVC UNDERDRAIN SHALL BE CONSTRUCTED IN CONFORMANCE WITH S.S. 504.2(Q) DRILLED POLY (VINYL CHLORIDE) (PVC) SEWER PIPE AND FITTINGS

## STANDARD NOTES:

- ABBREVIATIONS: AE = APRON ENDWALL; RCP = REINFORCED CONCRETE PIPE; HERCP = HORIZONTAL ELLIPTICAL REINFORCED CONCRETE PIPE; DNA = DOES NOT APPLY; SAS = SEWER ACCESS STRUCTURE; LP = LOW POINT INLET STRUCTURE; FP = FIELD POURED STRUCTURE; TR = TOP OF CONCRETE ROOF; NCM = NO CROWN MATCH FOR PIPES; UD = UNDERDRAIN
- TOP OF CASTING GRADE GIVEN IS THE TOP OF CURB FOR INLET STRUCTURES AND THE FLOWLINE OF THE CLOSED CASTING FOR SASs.
- TOP OF CONCRETE ROOF (TR) IS 1.25 BELOW TOP OF CASTING UNLESS OTHERWISE NOTED.
- ALL REINFORCED CONCRETE PIPES TO BE CLASS III UNLESS OTHERWISE NOTED.
- SURVEYOR TO CONFIRM THAT ALL INLET STATION / OFFSETS LINE UP WITH PROPOSED CURB AND GUTTER.
- ALL REBAR FOR FIELD POUR STRUCTURES SHALL BE EPOXY COATED. ANY EXPOSED STEEL SHALL BE TOUCHED UP OR RECOATED PRIOR TO USE.
- ALL FIELD POURED SAS STORM STRUCTURES SHALL BE CONSTRUCTED IN ACCORDANCE WITH STANDARD DETAIL DRAWING 5.7.3.
- ALL PRECAST SAS STORM STRUCTURES SHALL BE CONSTRUCTED IN ACCORDANCE WITH STANDARD DETAIL DRAWING 5.7.5.
- ALL STRUCTURES CALLED OUT AS FIELD POURED SHALL BE FIELD POURED. ALL OTHER STRUCTURES (NOT INDICATED AS FIELD POURED) SHALL BE SUBMITTED TO CITY ENGINEERING FOR APPROVAL IF PRECAST STRUCTURES ARE PREFERRED. CONTACT TODD CHOJNOWSKI OF CITY ENGINEERING AT (608) 266-4094 FOR PRECAST APPROVALS, FAX SHOP DRAWINGS TO (608)264-9275, OR EMAIL SHOP DRAWINGS TO TCHOJNOWSKI@CITYOFMADISON.COM.





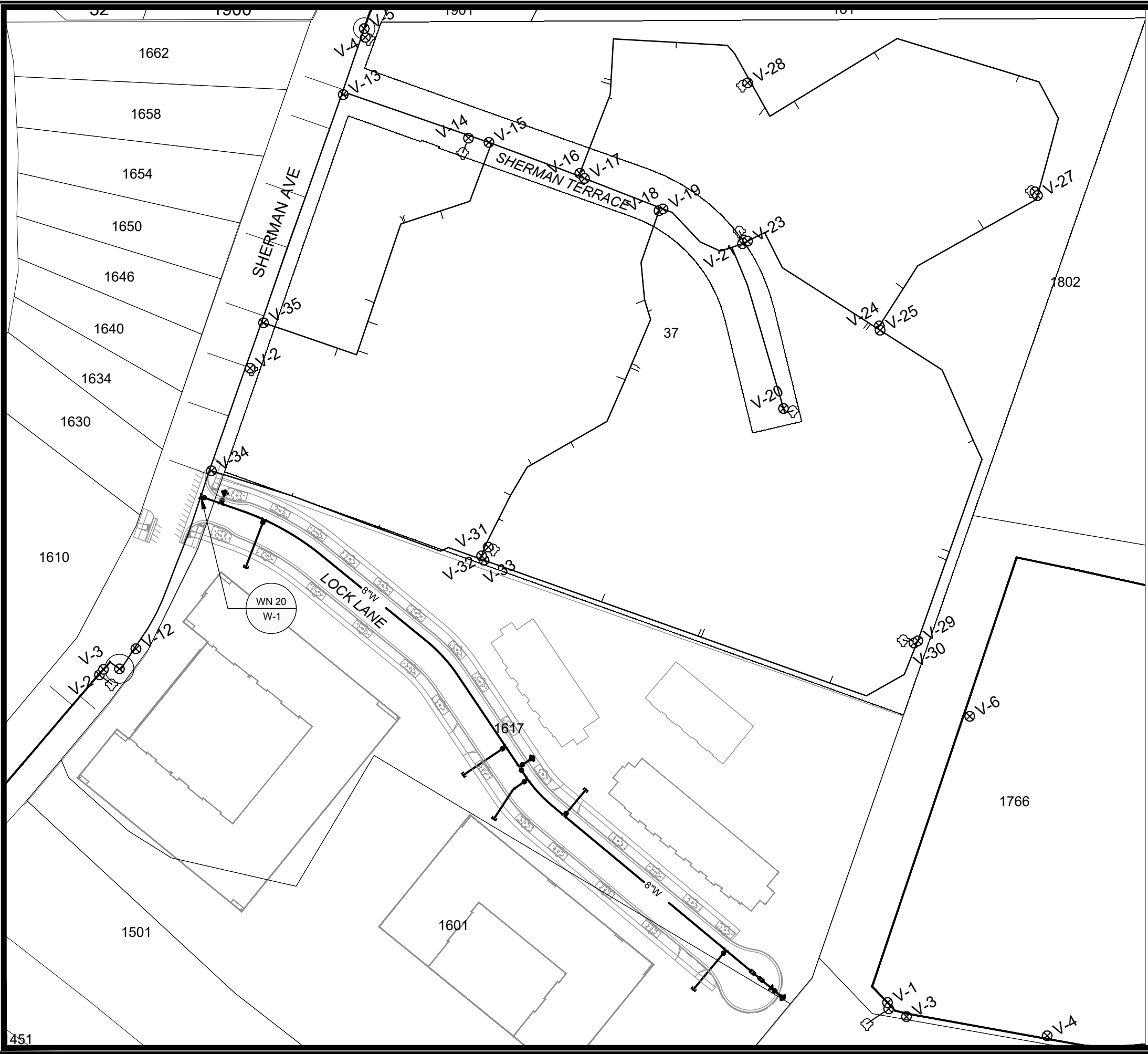
MARK	REVISION	DATE	BY
14792	W-1	8/13/2024 10:34 AM	NGM

14792  
MADISON, WI  
9332  
CONTRACT NO:

LOCK LANE - WATER PLAN AND PROFILE  
1601 - 1617 SHERMAN AVENUE CSM  
M:\DESIGN\Projects\14792\CAD\Water\14792\_WU-Water.dwg

14792  
W-1





1" = 100'

WN20: CUT-IN CONNECTION  
SHERMAN AVE

- ISOLATION VALVES:
- V-5 (8-IN)
  - V-11 (8-IN)

NOTIFY: 1630, 1634, 1640, 1646, 1650, 1654, 1658, 1662 SHERMAN AVE, AND THE CONDOMINIUM RESIDENTS OF SHERMAN TERRACE ASSOCIATION.

CONTACT INFO FOR ASSOCIATION:  
608.244.7171  
management@shermanterrace.org

BIRWOOD PROPERTY MANAGEMENT INFO:  
608.241.4449  
Info@birwood.net

DISCLAIMER NOTE:  
THE WATER IMPACT PLAN IS PROVIDED FOR REFERENCE PURPOSES TO AID PLANNING CONNECTION POINT ISOLATION AND PREPARING NOTIFICATION LISTS DURING PLANNED OUTAGES. REQUEST ANY ALTERNATIVE CONNECTION METHODS IN WRITING, PER SPECS.

SCALE: #####  
DESIGNED BY: NGM  
MADISON WATER UTILITY  
119 E OLIN AVE, MADISON, WI 53713  
PRINTING DATE: 8/13/24

CONTRACT NO: 9332

1601 - 1617 SHERMAN AVENUE CSM  
WATER IMPACT PLAN  
CITY OF MADISON, WISCONSIN



14792  
W-3



CONSTRUCTION NOTES:

- |   |  |
|---|--|
| <ol style="list-style-type: none"> <li>CONSTRUCT NEW WATER MAIN 6.0' BELOW FINISHED GRADE, UNLESS OTHERWISE NOTED. INSULATE MAIN WITH POLYSTYRENE BOARD AT STORM CROSSINGS AND OTHER AREAS IDENTIFIED BY ENGINEER AS HAVING INADEQUATE COVER.</li> <li>VERIFY SIZE OF EXISTING WATER SERVICES AND RECONNECT SERVICES AS INDICATED.</li> <li>MINIMIZE DISRUPTION OF SERVICE TO CUSTOMERS. NOTIFY PER CONTRACT REQUIREMENTS OF ANY PLANNED WATER OUTAGE.</li> </ol> | <p>WN-1 REPLACE THE EXISTING LEAD SERVICE WITH A NEW COPPER SERVICE.</p> <p>WN-2 EXTEND AND RECONNECT THE EXISTING COPPER SERVICE TO THE NEW WATER MAIN.</p> <p>WN-3 EXISTING SERVICE TO BE ABANDONED WHEN THE WATER MAIN IS CUT OFF.</p> <p>WN-4 DISCONNECT FROM THE OLD WATER MAIN AND RECONNECT THE EXISTING COPPER WATER SERVICE LATERAL TO THE NEW WATER MAIN.</p> <p>WN-5 RELOCATE THE EXISTING FIRE HYDRANT.</p> <p>WN-6 ABANDON WATER VALVE ACCESS STRUCTURE.</p> <p>WN-7 FURNISH AND INSTALL THE NEW TOP SECTION FOR THE WATER ACCESS STRUCTURE.</p> <p>WN-8 ABANDON THE VALVE BOX.</p> <p>WN-9 FURNISH THE DITCH, COMPACTION, AND ALL MATERIALS AND LABOR FOR THE INSTALLATION OF NEW SERVICE LATERAL.</p> <p>WN-10 REMOVE AND SALVAGE EXISTING HYDRANT</p> <p>WN-11 REPLACE THE EXISTING COPPER SERVICE WITH A COPPER SERVICE</p> <p>WN-20+ SEE WATER IMPACT PLAN FOR CONNECTION POINT ISOLATION AND WATER SHUT-OFF NOTIFICATION INFORMATION.</p> |
|---|--|

WATER UTILITY ULO SCHEDULE

**\*ESTIMATE OF MATERIALS SUPPLIED BY CONTRACTOR:**

PAY_ITEM_ID	DESCRIPTION	QUANTITY	UNIT
70002	FURNISH AND INSTALL 6-INCH PIPE & FITTINGS	42	LNFT
70003	FURNISH AND INSTALL 8-INCH PIPE & FITTINGS	1075	LNFT
70031	FURNISH AND INSTALL 6-INCH WATER VALVE	3	EACH
70032	FURNISH AND INSTALL 8-INCH WATER VALVE	7	EACH
70040	FURNISH AND INSTALL AND SALVAGE HYDRANT	3	EACH
70101	FURNISH AND INSTALL STYROFOAM	1	EACH
71002	8-IN MJ CAP	5	EACH
71135	8-IN 22-1/2° BEND	1	EACH
71159	8X6-IN REDUCER	1	EACH
71210	8X6-IN TEE	2	EACH
71211	8X8-IN TEE	6	EACH
71341	8X18-IN OFFSET	1	EACH
71342	8X24-IN OFFSET	1	EACH

**\*ESTIMATE OF MATERIALS SUPPLIED BY WATER UTILITY:**

N/A

**\*ESTIMATE OF MATERIALS SALVAGED:**

N/A

\* ESTIMATE OF MATERIALS IS FOR INFORMATION ONLY. ENGINEER DOES NOT GUARANTEE ACCURACY OF MATERIAL TAKE-OFF.

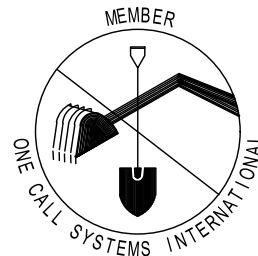
TO OBTAIN LOCATION OF PARTICIPANTS' UNDERGROUND FACILITIES BEFORE YOU DIG IN WISCONSIN

CALL DIGGERS HOTLINE TOLL FREE 811 OR 1-800-242-8511

FAX-A-LOCATE 1-800-338-3860

TDD (FOR HEARING IMPAIRED) 1-800-542-2289

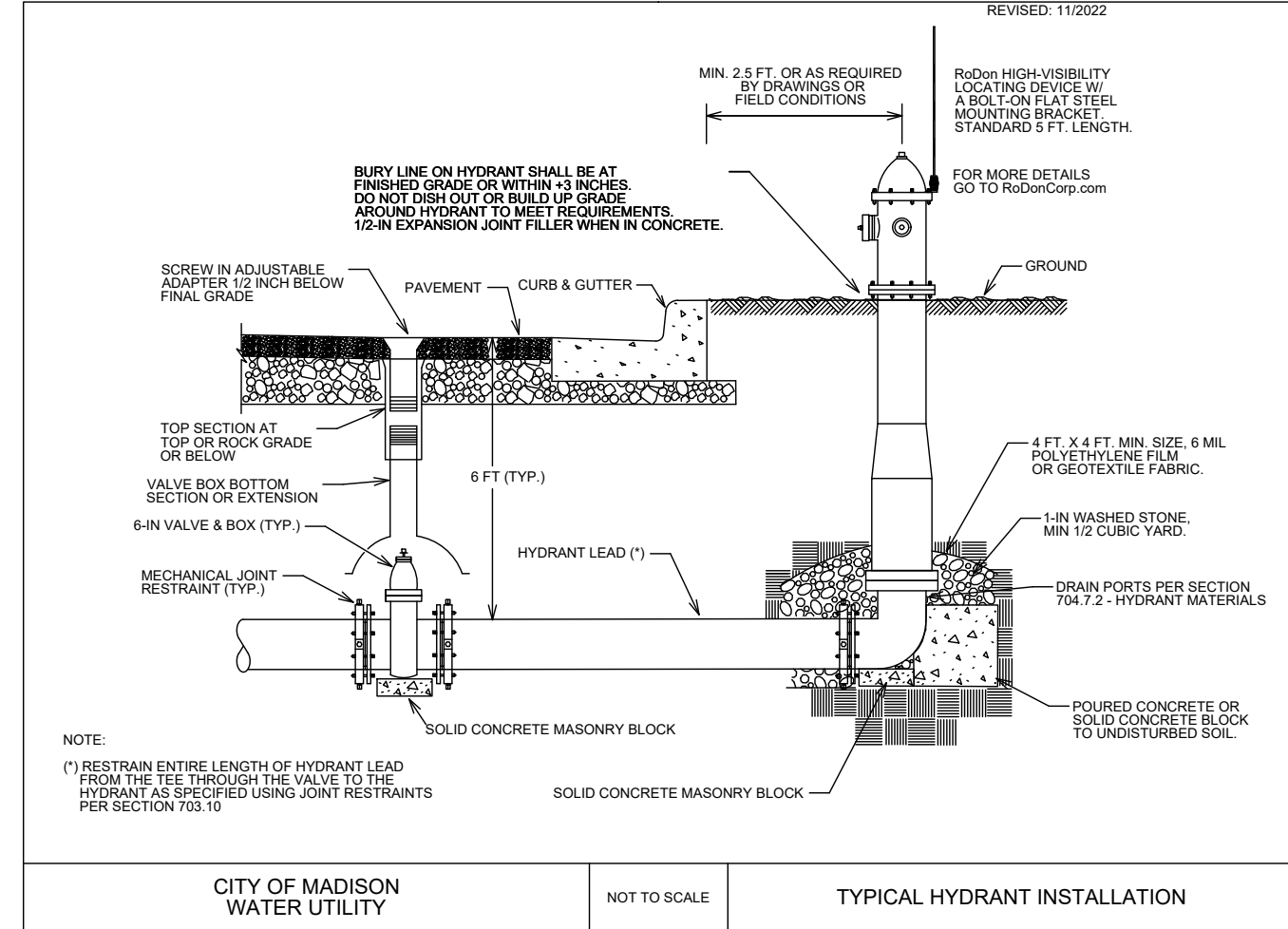
WIS. STATUTE 182.0175 (1974) REQUIRES MIN. OF 3 WORK DAYS NOTICE BEFORE YOU EXCAVATE.



DISCLAIMER NOTE: UTILITY LOCATIONS SHOWN ARE APPROXIMATE ONLY. IT SHALL BE THE CONTRACTOR'S RESPONSIBILITY TO DETERMINE THE EXACT HORIZONTAL AND VERTICAL LOCATION OF ALL EXISTING UNDERGROUND AND OVERHEAD UTILITIES PRIOR TO COMMENCING WORK.

PART VII - WATER MAINS AND SERVICE LATERALS

DETAIL DRAWING NO. 7.04  
REVISED: 11/2022



CITY OF MADISON WATER UTILITY

NOT TO SCALE

TYPICAL HYDRANT INSTALLATION

SCALE: N/A

DESIGNED BY: NGM  
MADISON WATER UTILITY  
119 E OLIN AVE, MADISON, WI 53713  
PRINTING DATE: 8/13/24

CONTRACT NO: 9332

1601 - 1617 SHERMAN AVENUE CSM  
WATER ESTIMATE OF MATERIALS  
CITY OF MADISON, WISCONSIN



14792

W-4





SHERMAN AVE

LOCK LANE

LOCK LANE

- GENERAL ELECTRIC NOTES:
1. LOCATIONS ARE APPROXIMATE. THE CONTRACTOR SHALL NOTIFY REBECCA QUREISHI (267-8849) AT LEAST 24 HOURS IN ADVANCE OF NEEDING BASE LOCATION MARKED
  2. BASE INSTALLED IN TERRACE SHALL BE 4' FROM FACE OF CURB UNLESS OTHERWISE NOTED.
  3. CONTRACTOR SHALL DO ALL WORK IN ACCORDANCE WITH "CITY OF MADISON STANDARD SPECIFICATIONS FOR PUBLIC WORKS CONSTRUCTION" AND ALL ADDENDUMS THERETO.
  4. THE CONTRACTOR SHALL CALL TRAFFIC OPERATIONS AT LEAST 24 HOURS IN ADVANCE OF POURING BASES TO ARRANGE FOR INSPECTION
  5. THE CONTRACOR SHALL ARRANGE FOR PICK UP OF THE FOLLOWING CITY FURNISHED MATERIALS BY CALLING ED SMITH AT THE TRAFFIC ENGINEERING OPERATIONS SHOP 266-9034  
-1'X40" ANCHOR BOLTS 1 SET OF 4

1601-1617 SHERMAN AVE STREETLIGHTS

	PROPOSED
	EXISTING

INSTALL LB-3 BASE  
UTILITY LIGHT TO BE FED  
DIRECTLY BY MG&E

1617

1617



NO.	REVISION	DATE	BY

14792  
MADISON, WI  
CONTRACT NO: 9332

ELECTRICAL PLAN  
1601 - 1617 SHERMAN AVENUE CSM  
M:\DESIGN\Projects\14792\CAD\Traffic\14792TE-Electrical Streetlights.dwg



14792  
E-1



Install Continental  
Crosswalk

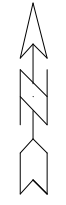
Remove Markings in  
intersection

Sherman Avenue

Install 6'  
Crosswalk

Lock Lane

Install Stop Bar



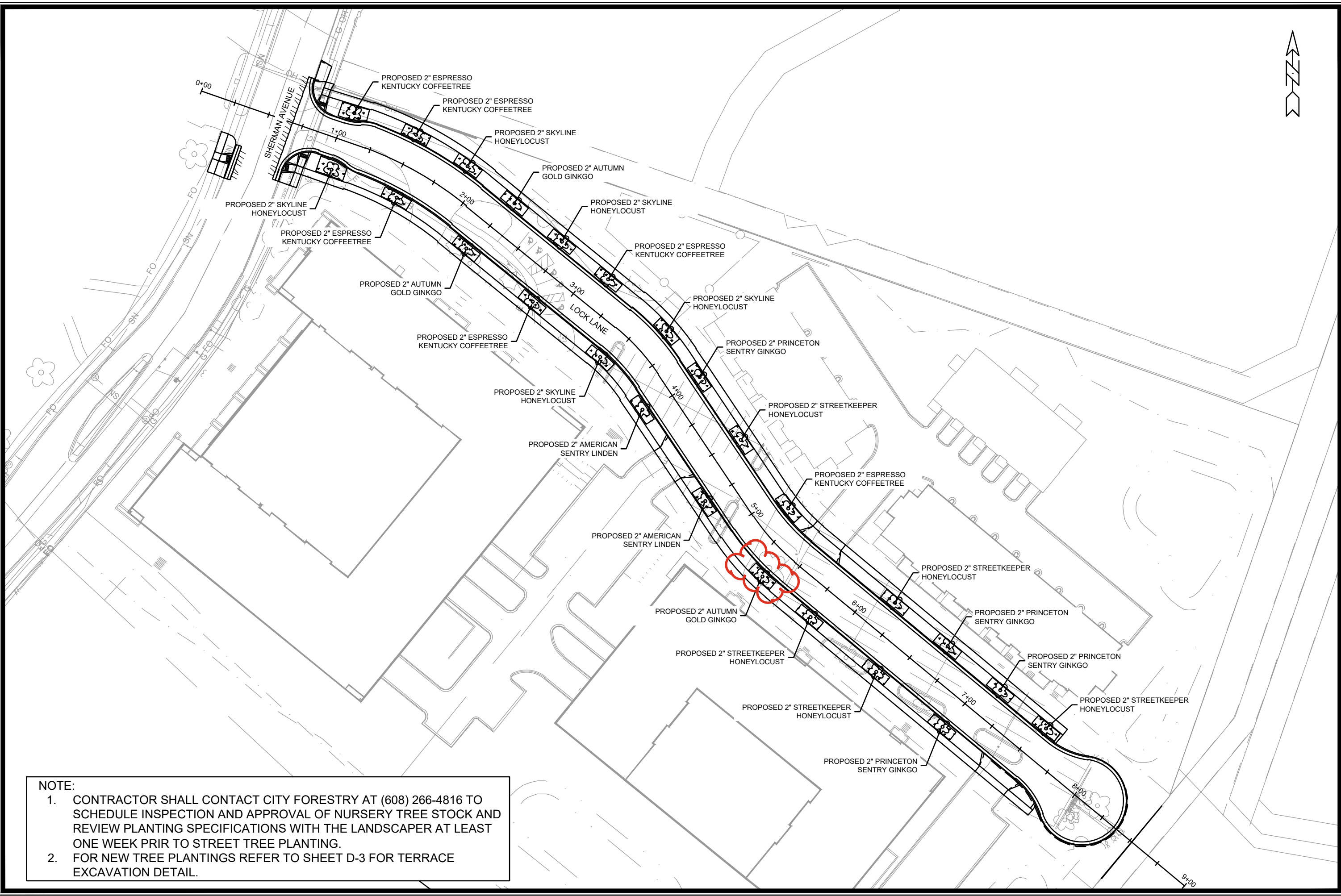
MARK	REVISION	DATE	BY
#####	#####	#####	#####
14792	Date: 6/7/2024 7:51 AM		PM-1

MARKING PLAN  
14792  
MADISON, WI  
CONTRACT NO: 9332

1601 - 1617 SHERMAN AVENUE CSM  
M:\DESIGN\Projects\14792\CAD\Traffic\14792TE-PavementMarking.dwg



14792  
PM-1




**NOTE:**

1. CONTRACTOR SHALL CONTACT CITY FORESTRY AT (608) 266-4816 TO SCHEDULE INSPECTION AND APPROVAL OF NURSERY TREE STOCK AND REVIEW PLANTING SPECIFICATIONS WITH THE LANDSCAPER AT LEAST ONE WEEK PRIOR TO STREET TREE PLANTING.
2. FOR NEW TREE PLANTINGS REFER TO SHEET D-3 FOR TERRACE EXCAVATION DETAIL.

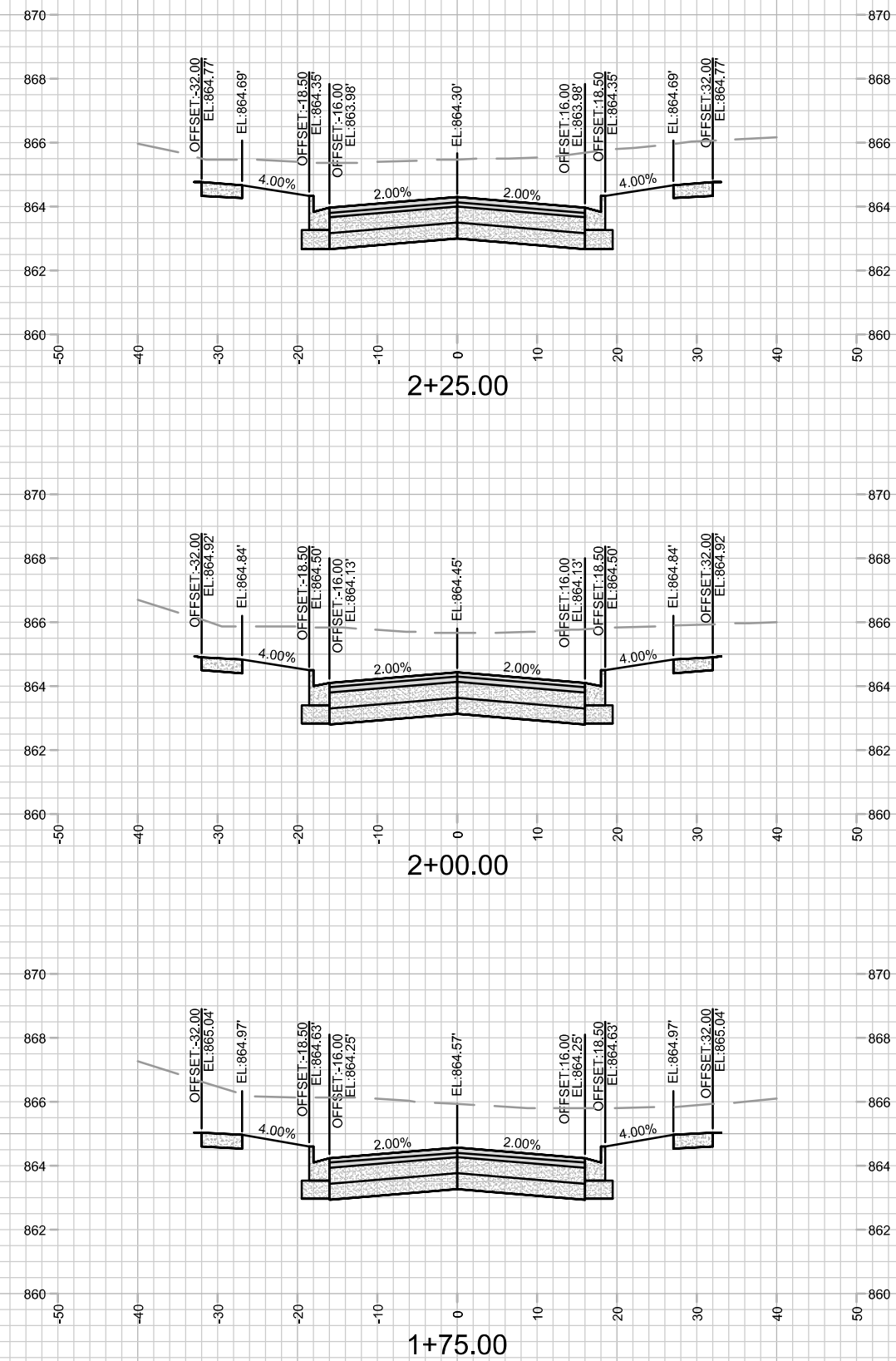
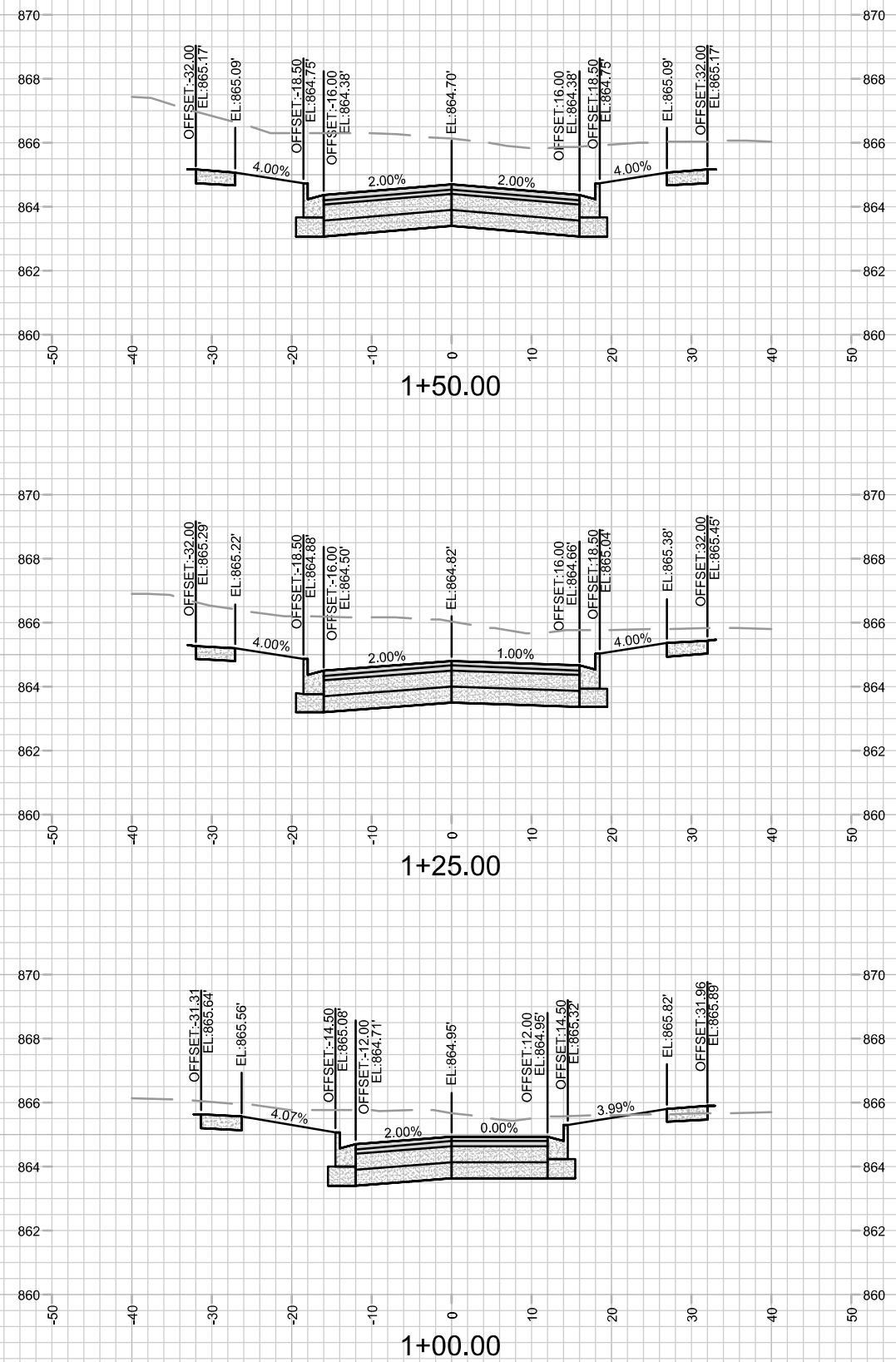
REV#	SHIFT IN TREE LOCATION	DATE	BY
1	08/13/24		
DATE	08/13/24	10:30 AM	
DESIGNED BY	14792		

14792  
 MADISON, WI  
 CONTRACT NO: 9332

LANDSCAPING PLAN  
 1601 - 1617 SHERMAN AVENUE CSM  
 M:\DESIGN\Projects\14792\CAD\Streets\14792EN-LandscapingPlan.dwg



14792  
 L-1

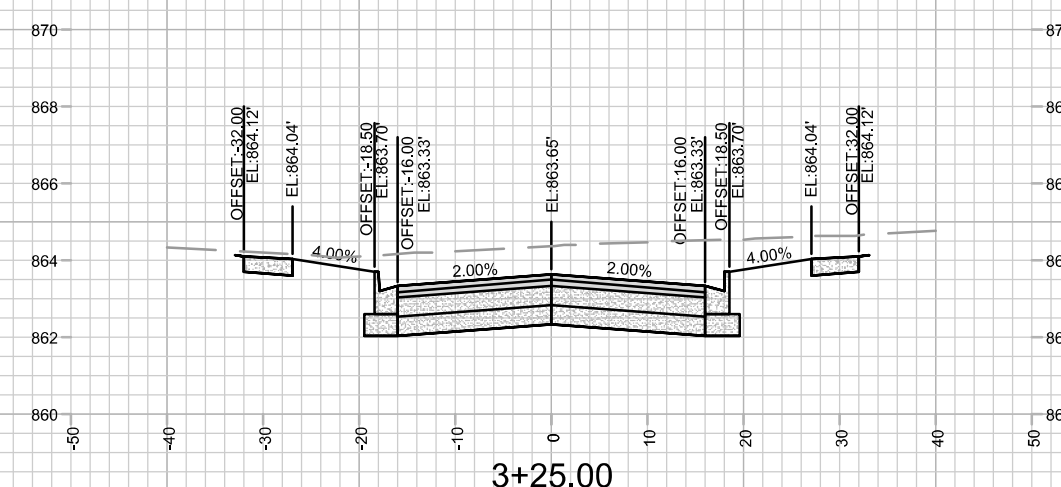
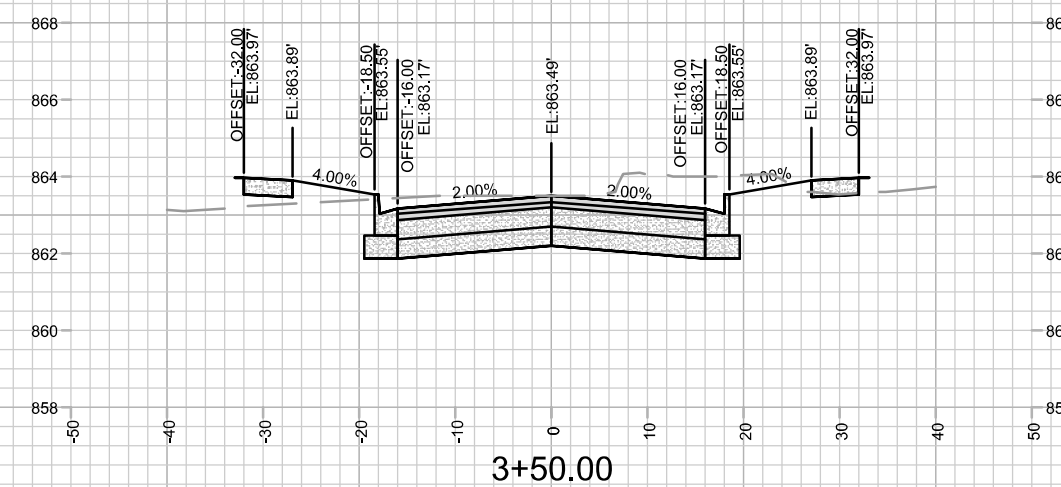
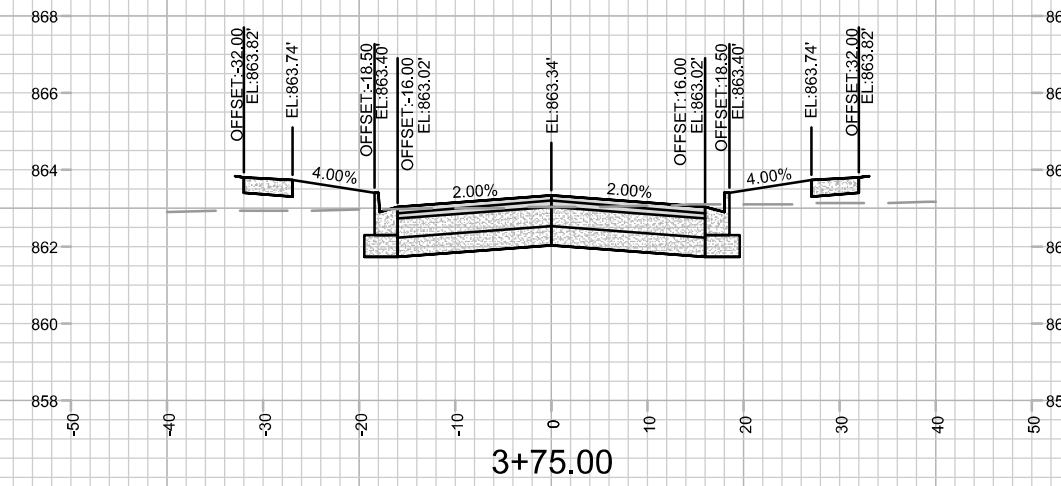
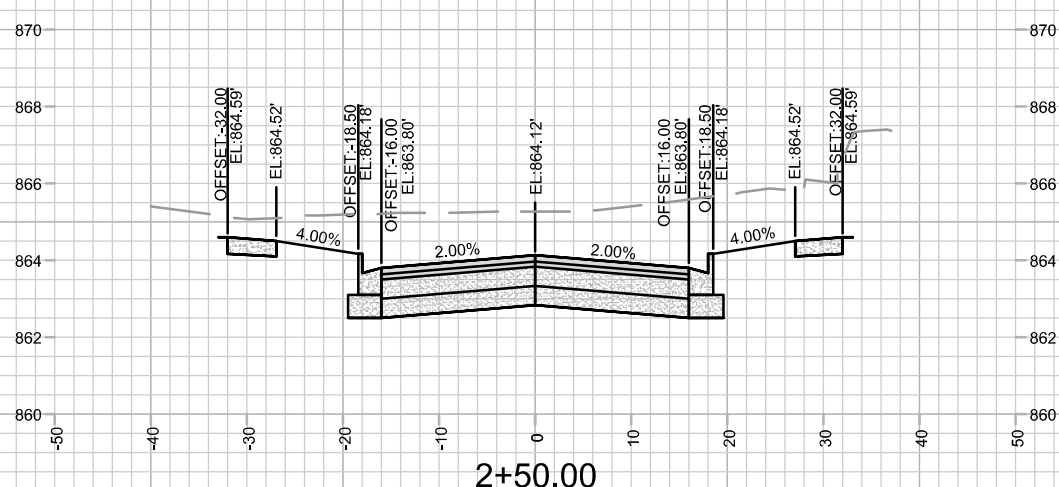
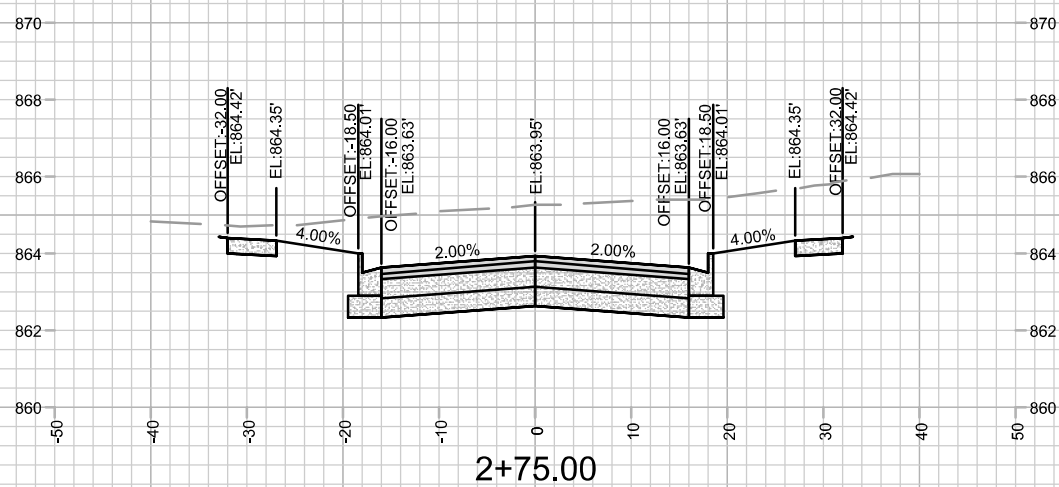
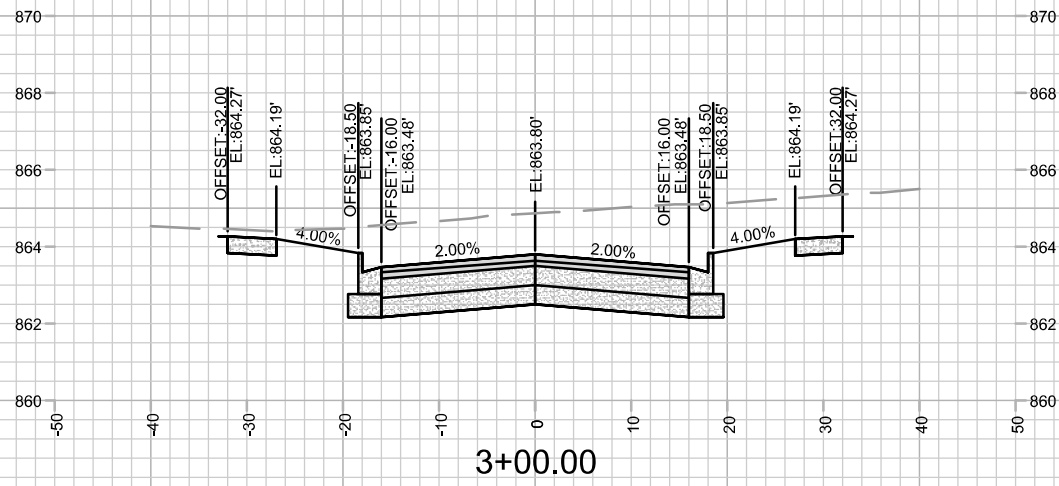


14792  
X-1

CROSS SECTION - LOCK LANE  
1601 - 1617 SHERMAN AVENUE CSM  
M:\DESIGN\Projects\14792\CAD\Streets\14792EN-Xsections.dwg

14792  
MADISON, WI  
9332  
CONTRACT NO:

DATE	BY
REVISION	BY
Designated By: ###	Scale: #####
Date: 6/7/2024 9:46 AM	14792
14792	X-1



NO.	DATE	BY
1		
2		
3		
4		
5		

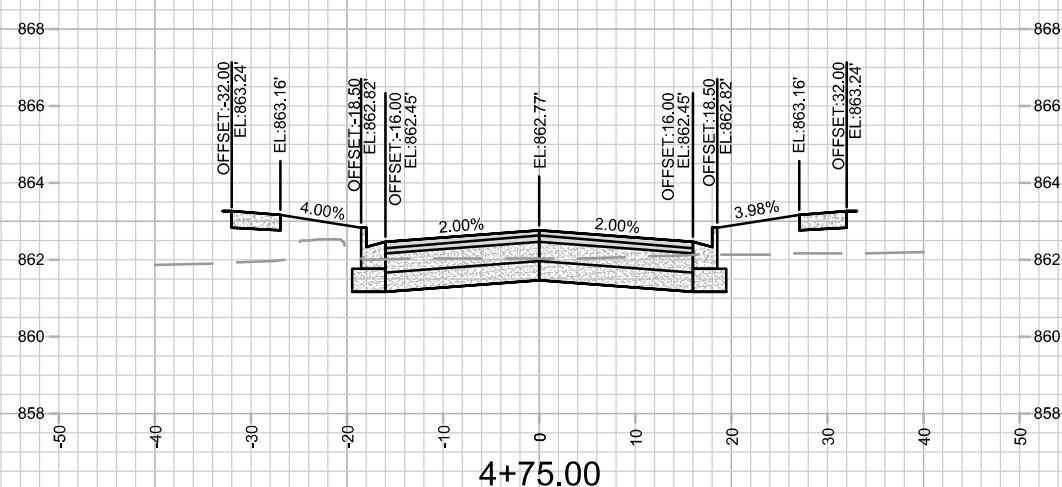
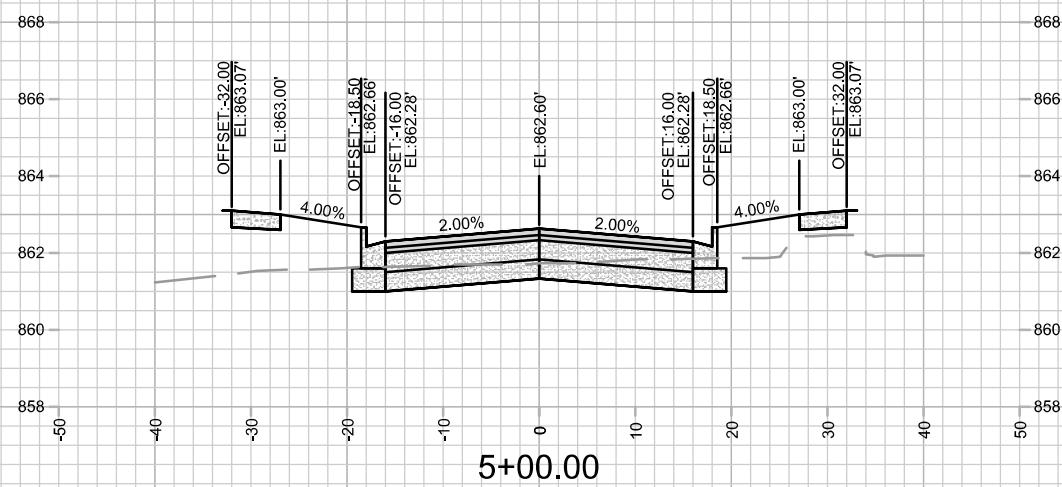
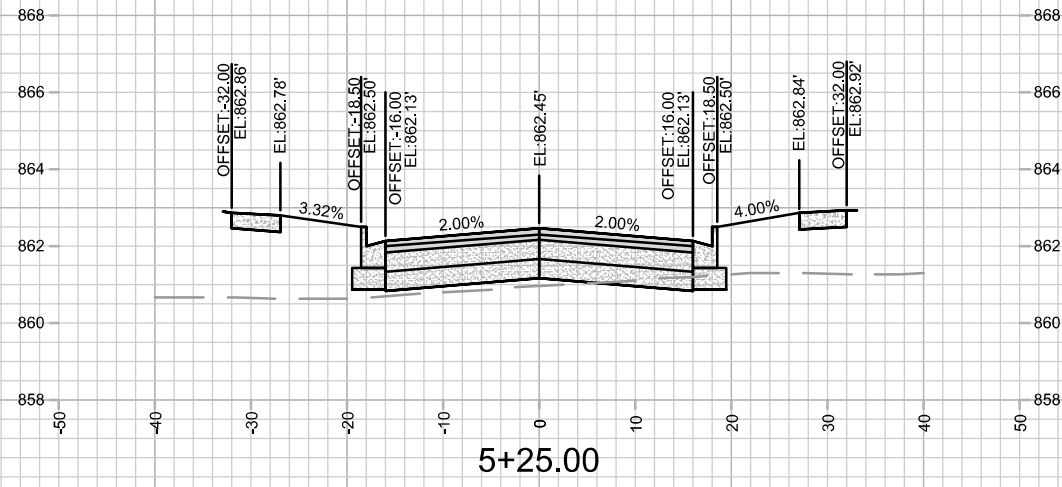
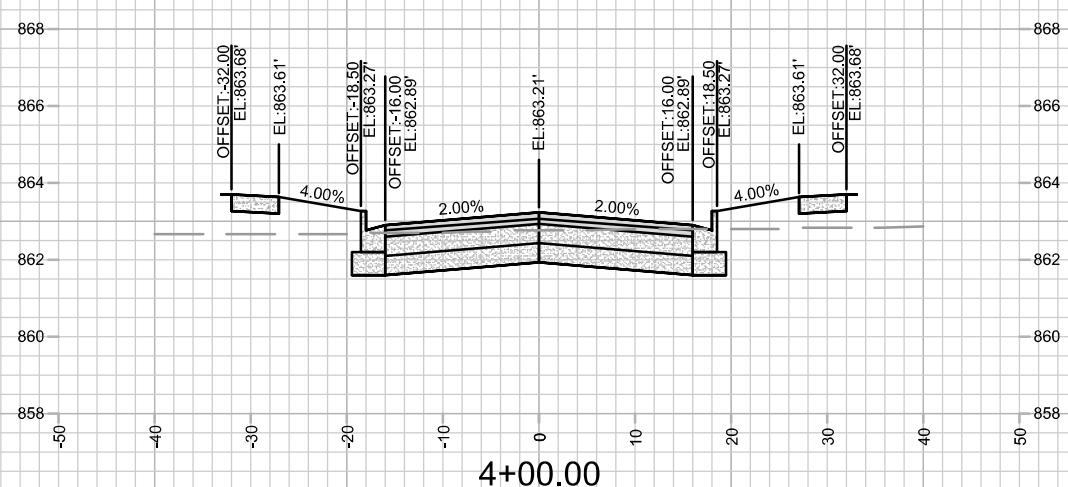
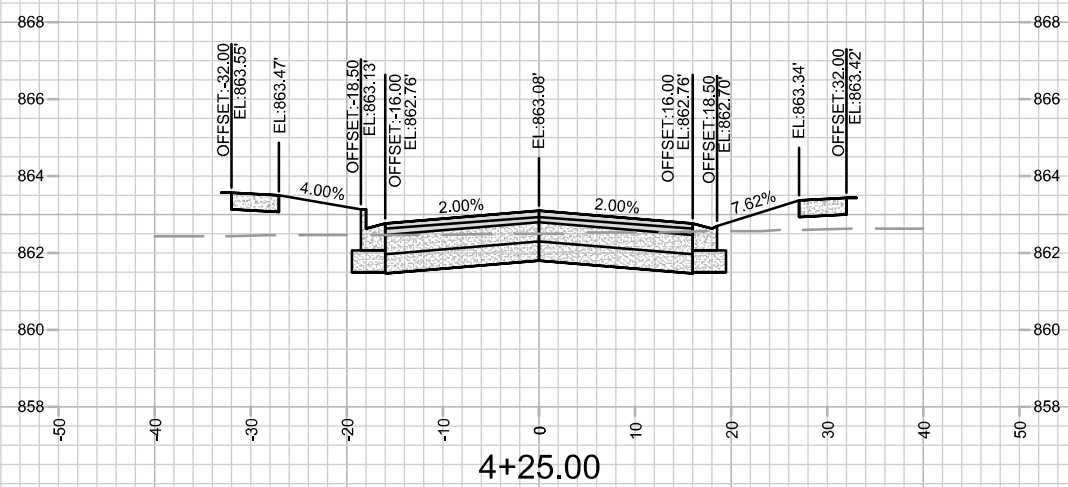
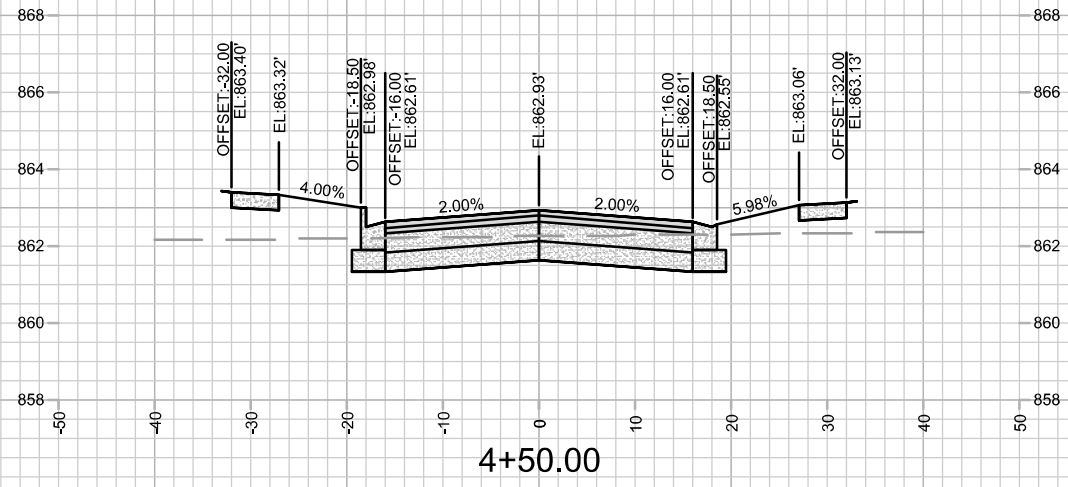
14792  
 MADISON, WI  
 9332  
 CONTRACT NO:

DESIGNED BY: ###  
 DATE: 6/7/2024 9:46 AM  
 SCALE: #####  
 X-2

CROSS SECTION - LOCK LANE  
 1601 - 1617 SHERMAN AVENUE CSM  
 M:\DESIGN\Projects\14792\CAD\Streets\14792EN-Xsections.dwg



14792  
 X-2



NO.	REVISION	DATE	BY

14792  
 MADISON, WI  
 9332  
 CONTRACT NO:

CROSS SECTION - LOCK LANE  
 1601 - 1617 SHERMAN AVENUE CSM  
 M:\DESIGN\Projects\14792\CAD\Streets\14792EN-Xsections.dwg

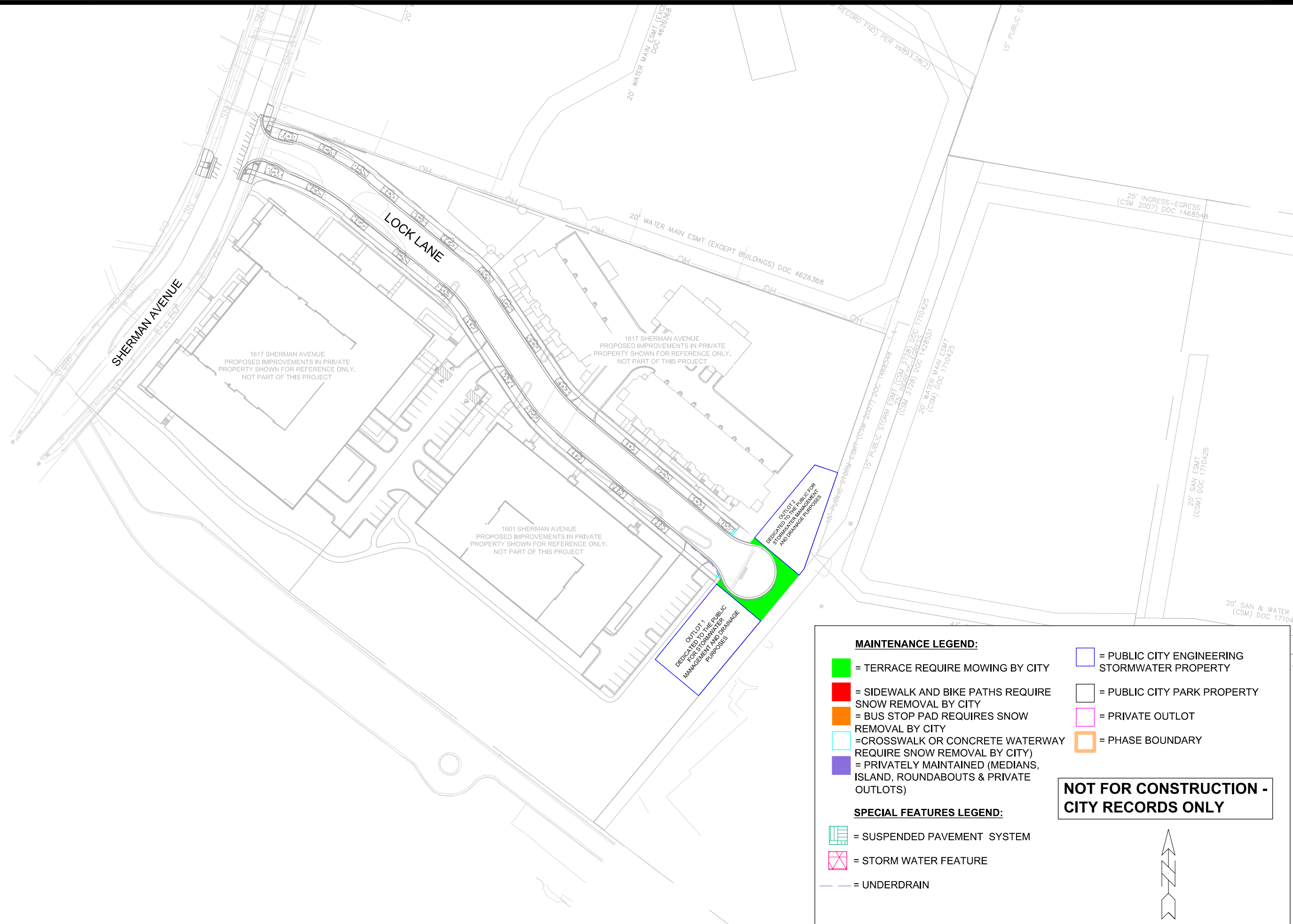


14792  
 X-3









**MAINTENANCE LEGEND:**

- = TERRACE REQUIRE MOWING BY CITY
- = SIDEWALK AND BIKE PATHS REQUIRE SNOW REMOVAL BY CITY
- = BUS STOP PAD REQUIRES SNOW REMOVAL BY CITY
- = CROSSWALK OR CONCRETE WATERWAY REQUIRE SNOW REMOVAL BY CITY
- = PRIVATELY MAINTAINED (MEDIANS, ISLAND, ROUNDABOUTS & PRIVATE OUTLOTS)
- = PUBLIC CITY ENGINEERING STORMWATER PROPERTY
- = PUBLIC CITY PARK PROPERTY
- = PRIVATE OUTLOT
- = PHASE BOUNDARY

**SPECIAL FEATURES LEGEND:**

- = SUSPENDED PAVEMENT SYSTEM
- = STORM WATER FEATURE
- = UNDERDRAIN

**NOT FOR CONSTRUCTION - CITY RECORDS ONLY**

14792	MADISON, WI	9332	CONTRACT NO:
<p><b>MAINTENANCE PLAN</b></p> <p><b>1601 - 1617 SHERMAN AVENUE CSM</b></p> <p>M:\DESIGN\Projects\14792\CAD\Streets\14792EN-Maintenance.dwg</p>			
	<p>14792</p> <p>MN-1</p>		