



Madison, Wisconsin

CITY OF MADISON

CITY ENGINEERING DIVISION

DEPARTMENT OF PUBLIC WORKS

PLAN OF PROPOSED IMPROVEMENT

686 GRAND CANYON DRIVE

INDEX OF SHEETS

SHEET NO. 1	TITLE SHEET
SHEET NO. D 1	STANDARD NOTES
SHEET NO. D 2	TYPICAL SECTIONS
SHEET NO. D 3	TERRACE EXCAVATION FOR TREE PLANTING
SHEET NO. L 1	LANDSCAPING PLAN
SHEET NO. P 1-P 4	PLAN & PROFILE
SHEET NO. U 1-U 3	SEWER PLAN & PROFILE
SHEET NO. U 4	SEWER SCHEDULE
SHEET NO. X 1-X 2	CROSS SECTIONS
NO MAINTENANCE PLAN REQUIRED	

CITY PROJECT NO. 14937
CONTRACT NO. 9148

REVISION 1 - 05/XX/2024:
UPDATED SHEETS: P1, P2, P3, P4, U3, U4

PROJECT
LOCATION



PUBLIC IMPROVEMENT PROJECT
APPROVED

APPROVED DATE: MARCH 5, 2024

BY THE COMMON COUNCIL
OF MADISON, WISCONSIN

PUBLIC IMPROVEMENT DESIGN
APPROVED BY:

Chris Petrykowski Apr 16, 2024

City Engineer Date

STREET
DESIGNED BY:



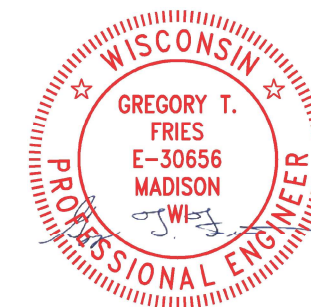
Apr 16, 2024

SANITARY SEWER
DESIGNED BY:



Apr 16, 2024

STORM SEWER
DESIGNED BY:



Apr 16, 2024

WATER
DESIGNED BY:

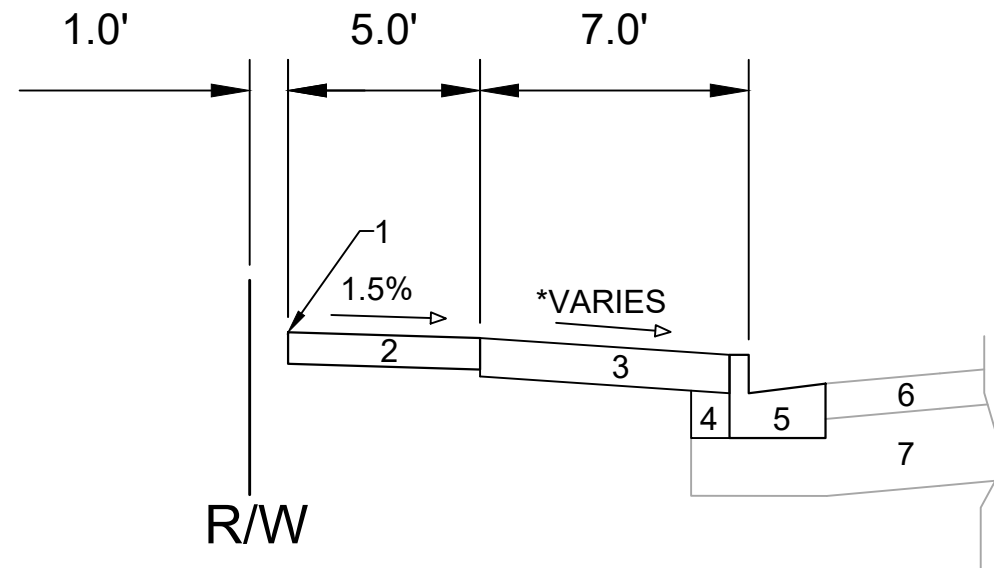
LATERAL ONLY

PLOT SCALE: 1"=0' = 1"=0" XREF

PLOT NAME: ----

REV. DATE: 4/10/2024 11:24 AM

ORIGINATOR: CITY_OF_MADISON



TYPICAL SECTION
GRAND CANYON DR

SPECIAL NOTES:

*SEE X-SHEETS FOR CROSS SLOPES

- 1 POINT REFERRED TO ON PROFILE FOR B.W.
- 2 5" CONCRETE SIDEWALK
- 3 6" TOPSOIL, SEED & MAT
- 4 EX. FILL TO REMAIN, INSTALL AT CURB REPLACEMENT LOCATIONS
- 5 EX. TYPE "A" CONCRETE CURB & GUTTER, REPLACE AT LOCATIONS IDENTIFIED ON P-SHEETS
- 6 EX. PAVEMENT TO REMAIN
- 7 EX. ROAD BASE TO REMAIN

MARK	REVISION	DATE	BY
14937	4/16/2024 10:42 AM		

14937
MADISON, WI
14937
9148
CONTRACT NO:

TYPICAL SECTIONS
686 GRAND CANYON DRIVE
M:\DESIGN\Projects\14937\CAD\Streets\14937EN-Details.dwg



W PLATTE DRIVE

686 GRAND CANYON DRIVE

GRAND CANYON DRIVE

PROPOSED 2" LONDON PLANETREE EXCLAMATION

PROPOSED 2" SWAMP WHITE OAK

PROPOSED 2" HACKBERRY

PROPOSED 2" LINDEN "SWEET STREET"

PROPOSED 2" STREETKEEPER HONEY LOCUST

NOTES:


1. CONTRACTOR SHALL CONTACT CITY FORESTRY AT (608) 266-4816 TO SCHEDULE INSPECTION AND APPROVAL OF NURSERY TREE STOCK AND REVIEW PLANTING SPECIFICATIONS WITH THE LANDSCAPER AT LEAST ONE WEEK PRIOR TO STREET PLANTING.
2. FOR NEW TREE PLANTINGS REFER TO SHEET D-3 FOR TERRACE EXCAVATION FOR TREE PLANTING DETAILS.



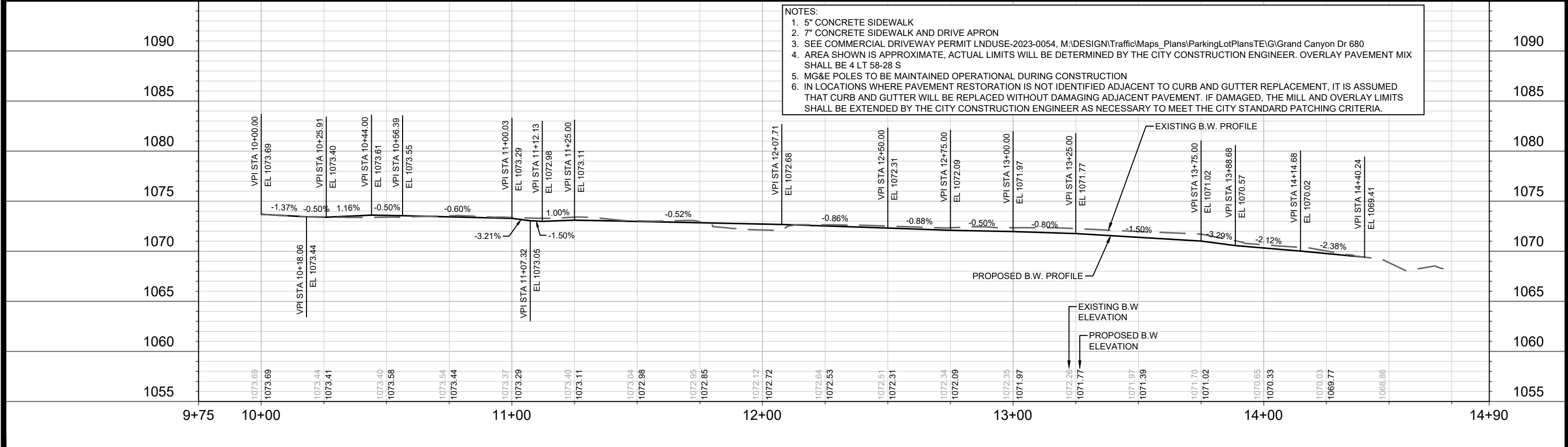
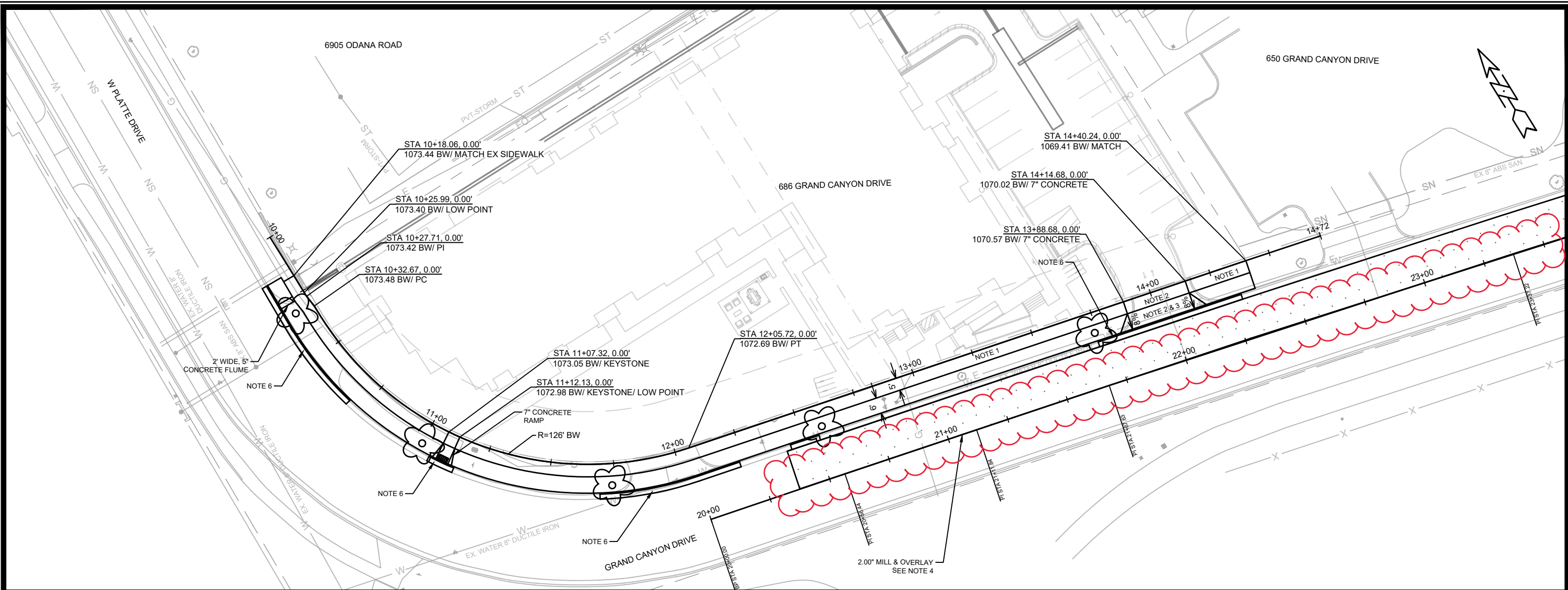
MARK	REVISION	DATE	BY
14937	14937	4/8/2024	10:45 AM
Designed By: ##	14937	Scale: 1:30	L-1

14937
MADISON, WI
CONTRACT NO: 9148

LANDSCAPING PLAN
686 GRAND CANYON DRIVE
M:\DESIGN\Projects\14937\CAD\Streets\14937\EN-Landscaping.dwg



14937
L-1



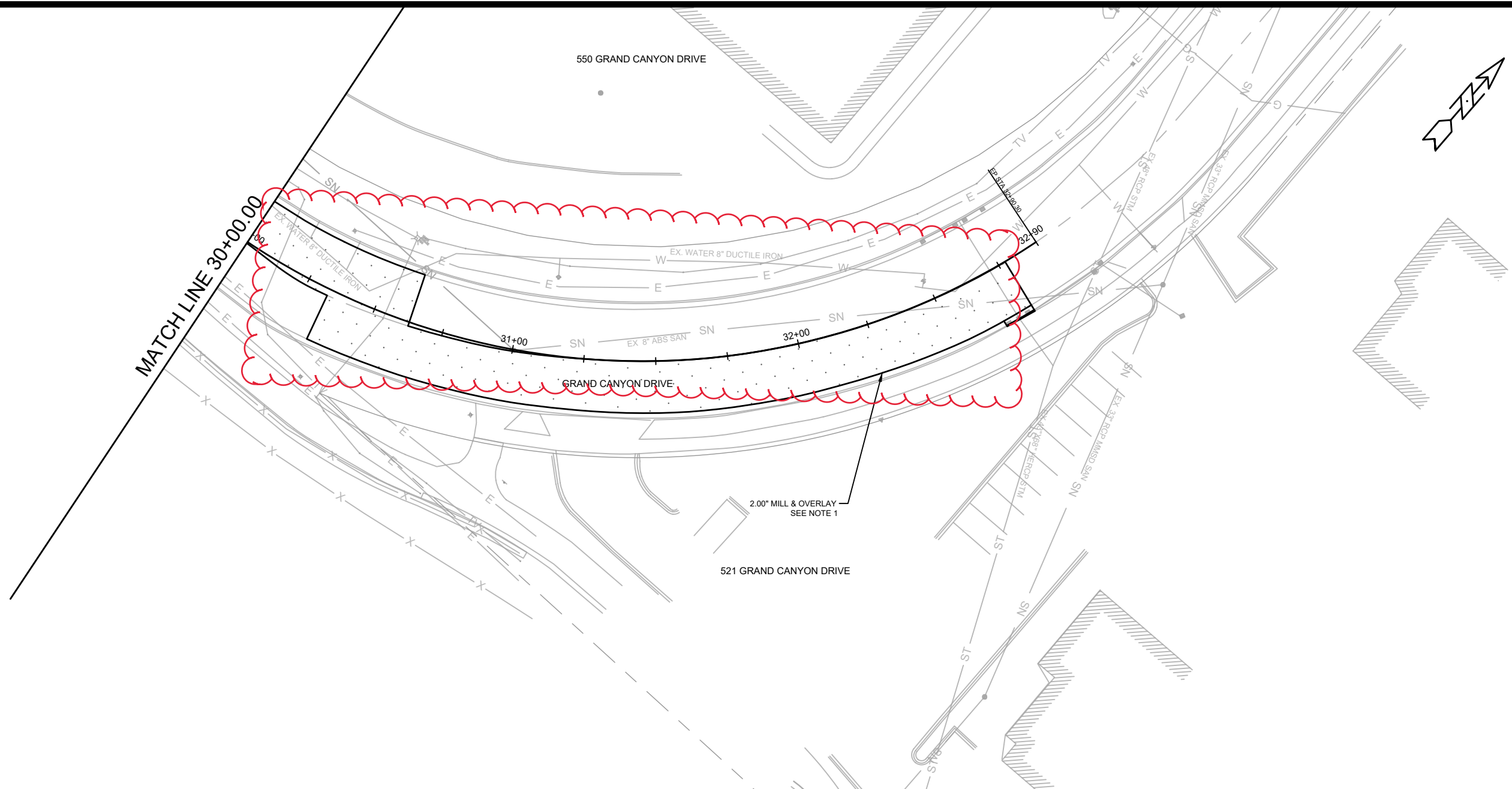
NOTES:
 1. 5" CONCRETE SIDEWALK
 2. 7" CONCRETE SIDEWALK AND DRIVE APRON
 3. SEE COMMERCIAL DRIVEWAY PERMIT LNDUSE-2023-0054, M:\DESIGN\Traffic\Maps_Plans\ParkingLotPlans\TE\G\Grand Canyon Dr 680
 4. AREA SHOWN IS APPROXIMATE, ACTUAL LIMITS WILL BE DETERMINED BY THE CITY CONSTRUCTION ENGINEER. OVERLAY PAVEMENT MIX SHALL BE 4 LT 58-28 S
 5. MG&E POLES TO BE MAINTAINED OPERATIONAL DURING CONSTRUCTION
 6. IN LOCATIONS WHERE PAVEMENT RESTORATION IS NOT IDENTIFIED ADJACENT TO CURB AND GUTTER REPLACEMENT, IT IS ASSUMED THAT CURB AND GUTTER WILL BE REPLACED WITHOUT DAMAGING ADJACENT PAVEMENT. IF DAMAGED, THE MILL AND OVERLAY LIMITS SHALL BE EXTENDED BY THE CITY CONSTRUCTION ENGINEER AS NECESSARY TO MEET THE CITY STANDARD PATCHING CRITERIA.

DATE	BY
REVISION	DATE
MARK	DESIGNED BY: ##
14937	14937
14937	P-1

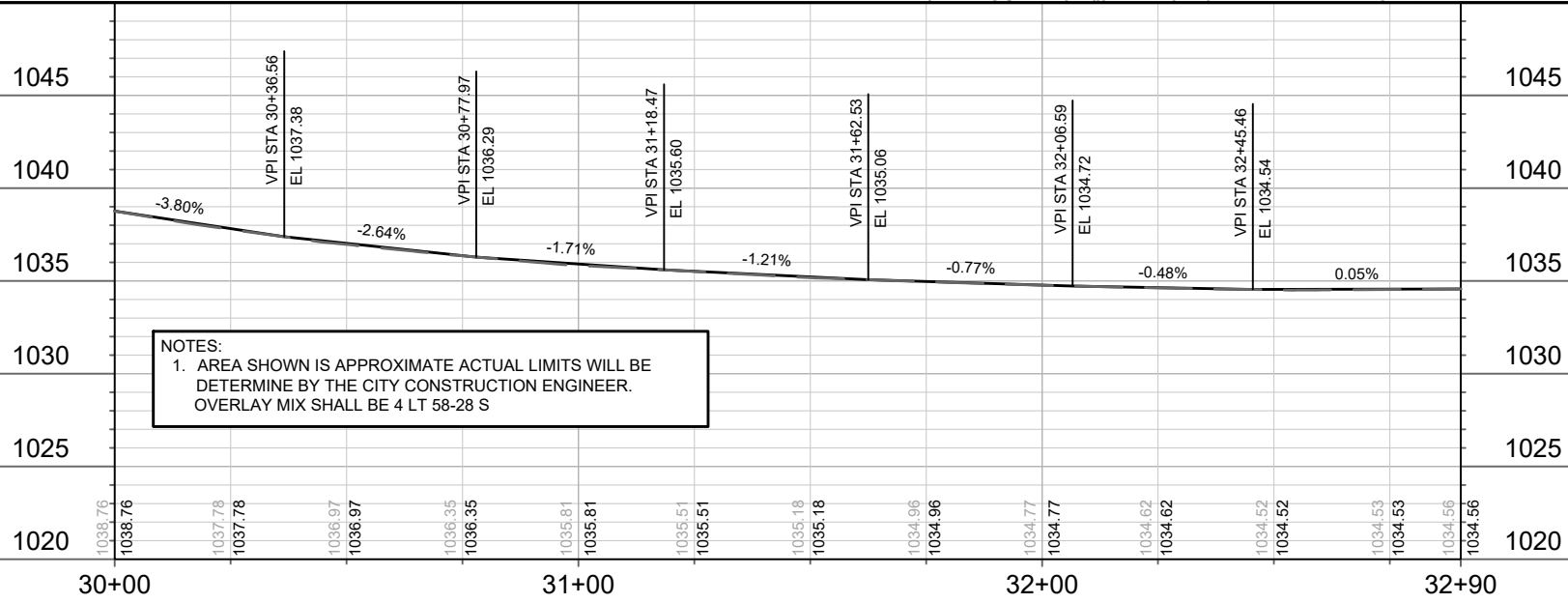
14937
 MADISON, WI
 9148
 CONTRACT NO:

PLAN & PROFILE - GRAND CANYON DR
 686 GRAND CANYON DRIVE
 M:\DESIGN\Projects\14937\CAD\Streets\14937\EN-PnP.dwg

14937
 P-1



MATCH LINE 30+00.00

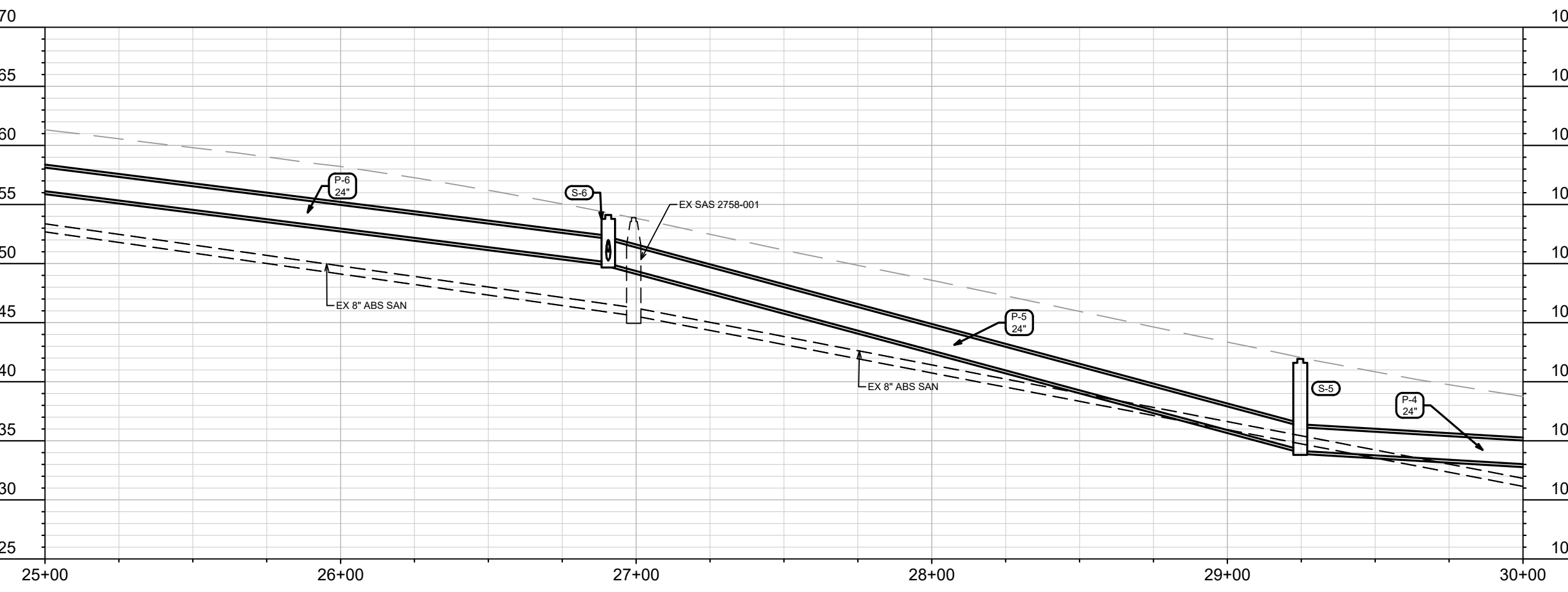
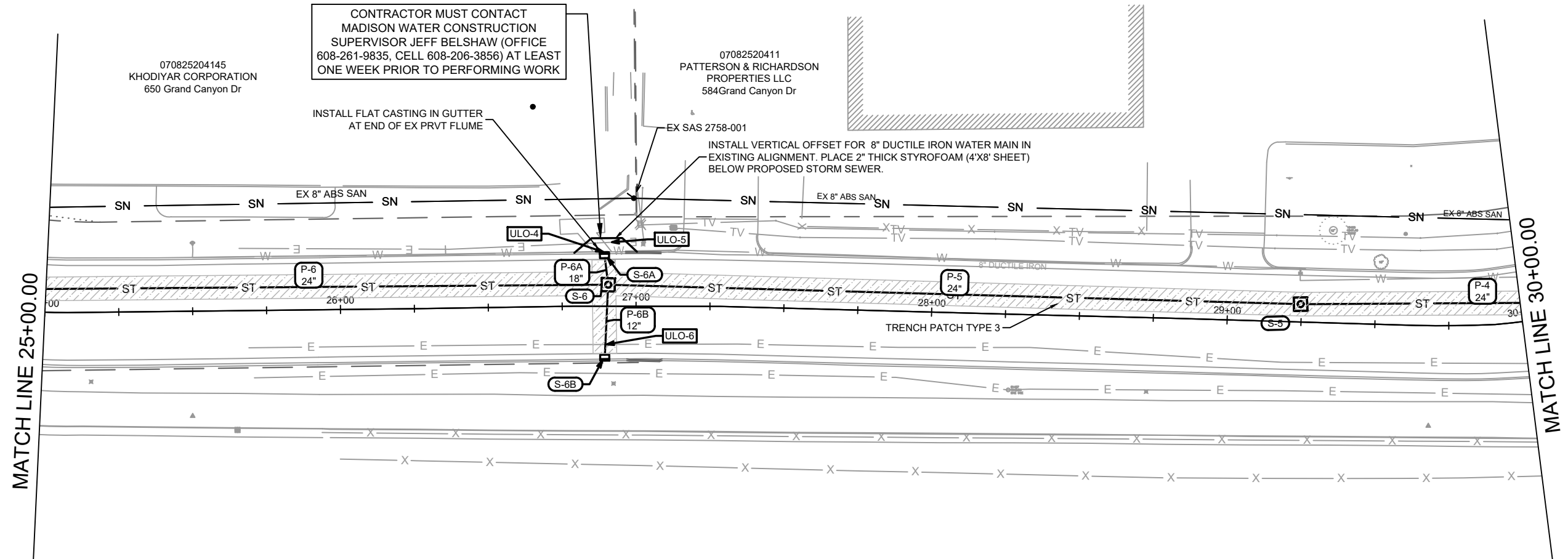


NOTES:
 1. AREA SHOWN IS APPROXIMATE ACTUAL LIMITS WILL BE DETERMINE BY THE CITY CONSTRUCTION ENGINEER.
 OVERLAY MIX SHALL BE 4 LT 58-28 S

MARK	REVISION	DATE	BY

14937
 MADISON, WI
 686 GRAND CANYON DRIVE
 CONTRACT NO: 9148
 M:\DESIGN\Projects\14937\CAD\Streets\14937EN-PnP.dwg





070825204145
KHODIYAR CORPORATION
650 Grand Canyon Dr

CONTRACTOR MUST CONTACT
MADISON WATER CONSTRUCTION
SUPERVISOR JEFF BELSHAW (OFFICE
608-261-9835, CELL 608-206-3856) AT LEAST
ONE WEEK PRIOR TO PERFORMING WORK

07082520411
PATTERSON & RICHARDSON
PROPERTIES LLC
584 Grand Canyon Dr



DATE	BY
REVISION	
Designed By: DAO	Date: 4/10/2024 11:47 AM
Scale: 1" = 40'	
14937	U-2

14937
MADISON, WI
CONTRACT NO.: 9148

SEWER PLAN & PROFILE - GRAND CANYON DR
686 GRAND CANYON DRIVE
M:\DESIGN\Projects\14937\CAD\Sewers\14937SWR-PfP.dwg



14937
U-2

SEWER SCHEDULE

* REVISION 1 - 4/25/2024 DAO

PROJECT NAME	SHEET NO.	U-4
PROJECT NO. 14937	U-4	
SEWER SCHEDULE		
CITY OF MADISON		

PROPOSED STORM STRUCTURES

STRUC. NO.	STATION	LOCATION (OFFSET)	TYPE	TOP OF CASTING	E.I.	DEPTH	NOTES
GRAND CANYON DR							
S-1	32+72.55	RT-23.30	TERR. INLET TYPE 1	1034.41	1029.87	4.54	FP; [1]
S-2	32+02.22	RT-9.69	4X4 STORM SAS	1034.59	1030.45	4.14	FP; W/R-1050-1550-0054
S-3	30+97.96	RT-10.26	4X4 STORM SAS	1035.69	1031.36	4.33	W/R-1050-1550-0054
S-4	30+48.01	RT-4.20	4X4 STORM SAS	1036.98	1032.22	4.76	W/R-1050-1550-0054
S-5	29+24.67	LT-6.05	4X4 STORM SAS	1039.99	1034.15	5.84	W/R-1050-1550-0054
S-6	26+90.56	LT-7.30	4X4 STORM SAS	1054.12	1050.00	4.12	W/R-1050-1550-0054
S-6A	26+89.30	LT-17.29	H INLET	1053.90	1050.35	3.55	W/R-3290-A; [4]
S-6B	26+89.42	RT-17.39	H INLET	1054.29	1051.15	3.14	W/R-3067-7004-V
S-7	24+87.10	LT-6.66	4X4 STORM SAS	1061.53	1056.53	5.00	W/R-1050-1550-0054
S-8	22+22.28	LT-8.22	4X4 STORM SAS	1069.39	1061.94	7.45	W/R-1050-1550-0054
S-8A	22+19.99	LT-17.65	H INLET	1069.22	1062.54	6.68	W/R-3067-7004-V; [2]
S-9	20+45.07	LT-7.95	3X3 STORM SAS	1071.81	1065.73	6.08	W/R-1050-1550-0054
S-10	20+43.67	LT-17.28	H INLET	1072.78	1066.07	6.71	W/R-3067-7004-V; [3]

PROPOSED STORM PIPES

PIPE NO.	FROM (DNSTM)	TO (UPSTM)	DISCH. E.I.	INLET E.I.	PLAN (PAY) LGTH (FT)	PIPE LGTH (FT)	SLOPE (%)	PIPE SIZE	TYPE	NOTES
GRAND CANYON DR										
* P-1	S-1	S-2	1030.00	1030.45	76	72	0.62%	24"	RCP	-
* P-2	S-2	S-3	1030.45	1031.36	108	104	0.88%	24"	RCP	-
P-3	S-3	S-4	1031.46	1032.22	52	47	1.60%	24"	RCP	-
P-4	S-4	S-5	1032.32	1034.15	123	119	1.54%	24"	RCP	-
P-5	S-5	S-6	1034.25	1050.00	234	231	6.82%	24"	RCP	-
P-6	S-6	S-7	1050.10	1056.53	203	199	3.24%	24"	RCP	-
P-6A	S-6	S-6A	1050.25	1050.35	10	7	1.42%	18"	RCP	NCM
P-6B	S-6	S-6B	1051.00	1051.15	25	22	0.69%	12"	RCP	-
P-7	S-7	S-8	1056.63	1061.94	264	260	2.04%	24"	RCP	-
P-8	S-8	S-9	1062.69	1065.73	177	174	1.75%	15"	RCP	-
P-8A	S-8	S-8A	1062.44	1062.54	10	7	1.51%	18"	RCP	-
P-9	S-9	S-10	1065.98	1066.07	9	7	1.30%	12"	RCP	-

STORM STRUCTURE REMOVALS

STRUC. NO.	ID NO.	STATION	LOCATION (OFFSET)	TYPE	DEPTH (FT)	NOTES
GRAND CANYON DR						
R-1	IN2858-041	32+72.17	RT-19.03	HHH INLET	3.69	-

STORM PIPE REMOVALS

PIPE REMOVAL NO.	REMOVE FROM	REMOVE TO	LGTH (FT)	PIPE SIZE	PIPE TYPE	NOTES
GRAND CANYON DR						
RP-1	S-1	R-1	5	24"	RCP	-

SANITARY STRUCTURE REMOVALS

STRUC ID NO.	STATION	LOCATION (OFFSET)	TOP OF CASTING	E.I.	DEPTH	NOTES
GRAND CANYON DR						
SAS2758-003	62+67.25	LT-36.17	1069.40	1060.50	8.90	-

ULO SCHEDULE

ID NO.	STATION (OFFSET)	LOCATION (OFFSET)	TYPE	NOTES
GRAND CANYON DR				
ULO-1	20+43.49	LT-18.59	8" WAT MAIN	-
ULO-2	20+89.55	LT-7.86	GAS	-
ULO-3	22+19.91	LT-18.99	8" WAT MAIN	-
ULO-4	26+89.28	LT-18.28	8" WAT MAIN	-
ULO-5	26+91.32	LT-21.64	UG ELEC	-
ULO-6	26+89.63	RT-12.97	UG ELEC	-
ULO-7	30+12.06	LT-4.68	UG TEL	-
ULO-8	30+53.06	RT-4.34	UG TEL	-

PROPOSED SANITARY STRUCTURES

SAS NO.	STATION	LOCATION (OFFSET)	TOP OF CASTING	E.I.	DEPTH (FT)	NOTES
GRAND CANYON DR						
SAS#1	62+67.25	LT-36.17	1069.40	1060.50	8.90	-

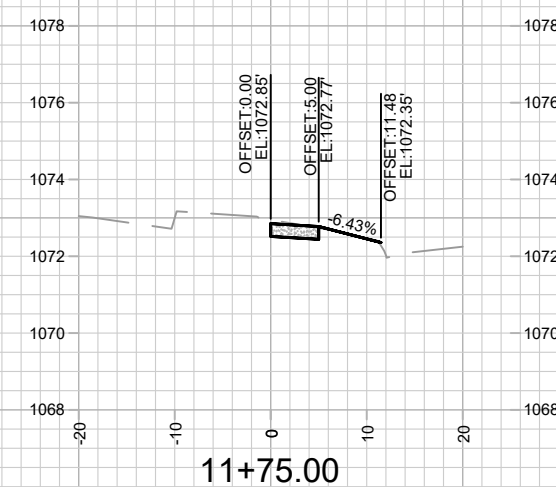
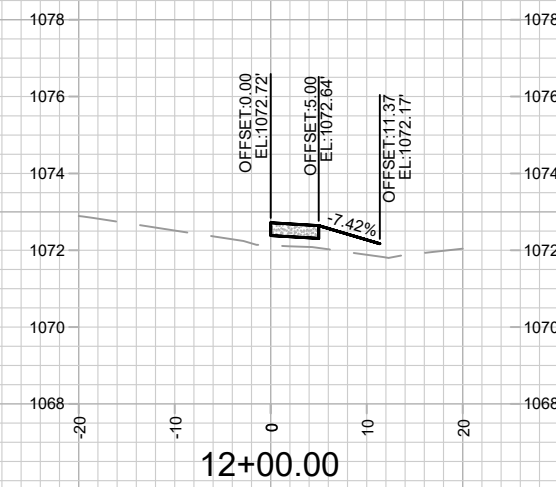
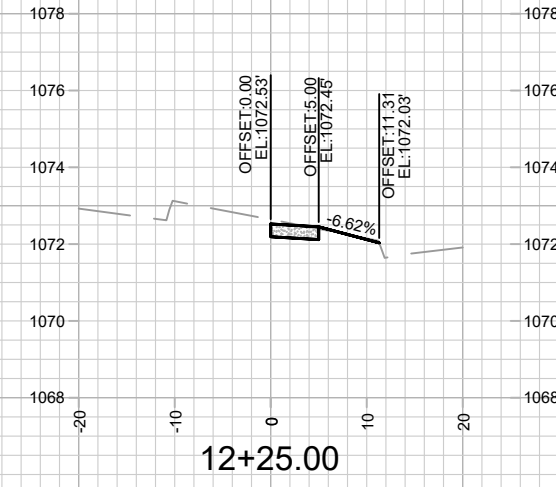
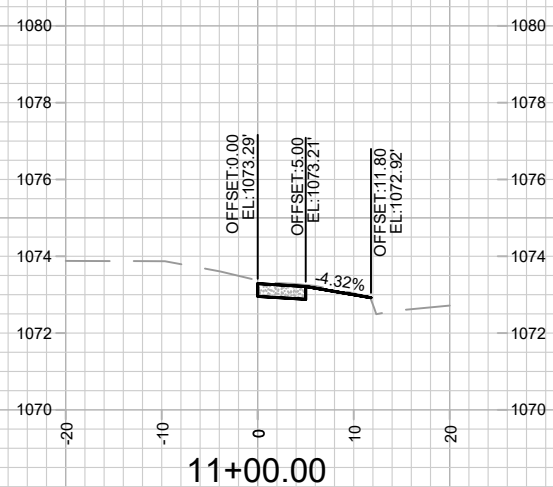
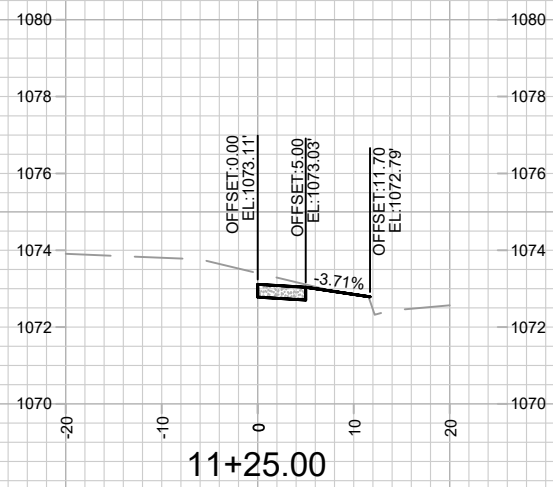
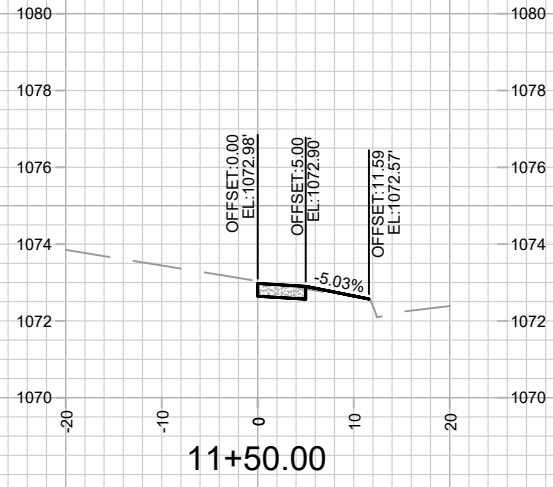
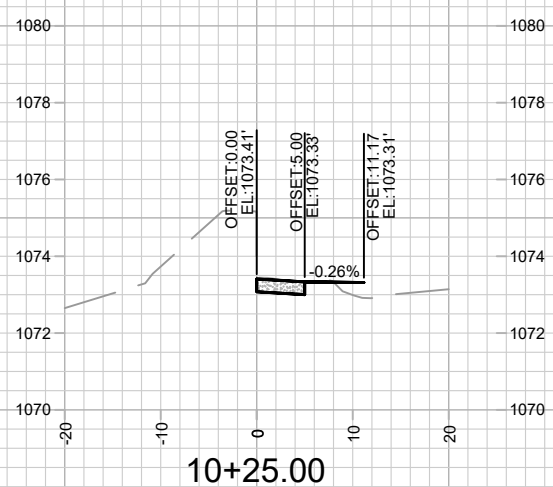
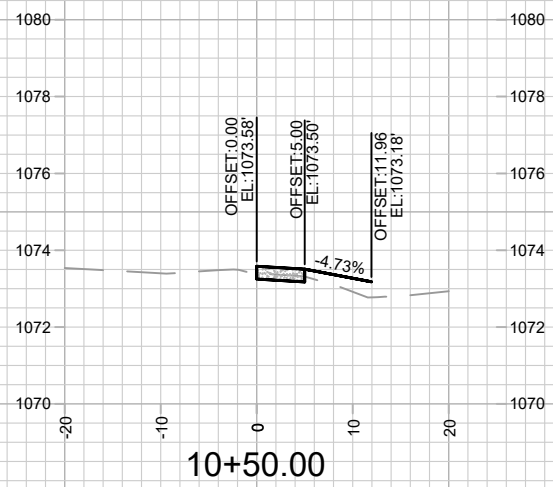
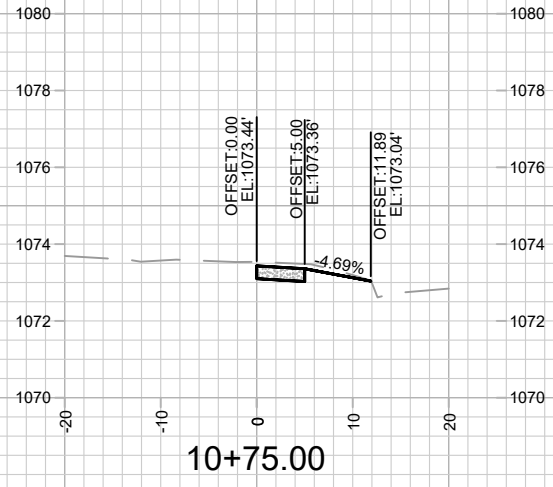
SPECIFIC NOTES:

- [1] TOP OF CURB GIVEN IN TABLE; SET CASTING 0.2' BELOW TOP OF CURB; RECONNECT EXISTING 24" RCP AT EI(SE)= 1029.87
- [2] CONNECT PRIVATE 12" STORM AT EI(N) = 1063.04
- [3] CONNECT PRIVATE 12" STORM AT EI(N) = 1066.17
- [4] TOC AT CENTER OF STRUCTURE GIVEN IN CHART; FLAT CASTING FOR END OF EX PRVT FLUME

STANDARD NOTES:

- PLAN LENGTH (PAY LENGTH) IS FROM CENTER OF STRUCTURE TO CENTER OF STRUCTURE. PIPE LENGTH IS ACTUAL LENGTH OF PIPE FROM STRUCTURE WALL TO STRUCTURE WALL. SLOPE CALCULATED USING PIPE LENGTH.
- ALL FIELD POURED SAS STORM STRUCTURES SHALL BE CONSTRUCTED IN ACCORDANCE WITH STANDARD DETAIL DRAWING 5.7.3. ALL PRECAST SAS STORM STRUCTURES SHALL BE CONSTRUCTED IN ACCORDANCE WITH STANDARD DETAIL DRAWING 5.7.5.
- ALL REBAR FOR FIELD POURED STRUCTURES SHALL BE EPOXY COATED. ANY EXPOSED STEEL SHALL BE TOUCHED UP OR RECOATED

- ABBREVIATIONS: AE = APRON ENDWALL; RCP = REINFORCED CONCRETE PIPE; HERCP = HORIZONTAL ELLIPTICAL REINFORCED CONCRETE PIPE; DNA = DOES NOT APPLY; SAS = SEWER ACCESS STRUCTURE; LP = LOW POINT INLET STRUCTURE; FP = FIELD POURED STRUCTURE; TR = TOP OF CONCRETE ROOF; NCM = NO CROWN MATCH FOR PIPES; UD = UNDERDRAIN
- APPROXIMATE DISCHARGE E.I. GIVEN, ADJUST E.I. AND PIPE SLOPE IN THE FIELD.
- TOP OF CASTING GRADE GIVEN IS THE TOP OF CURB FOR INLET STRUCTURES AND THE FLOWLINE OF THE CLOSED CASTING FOR SAS'S.
- ALL REINFORCED CONCRETE PIPES TO BE CLASS 3 UNLESS OTHERWISE NOTED.
- SURVEYOR TO CONFIRM THAT ALL INLET STATION / OFFSETS LINE UP WITH PROPOSED CURB AND GUTTER.
- ALL STRUCTURES CALLED OUT AS FIELD POURED SHALL BE FIELD POURED. ALL OTHER STRUCTURES (NOT INDICATED AS FIELD POURED) SHALL BE SUBMITTED TO CITY ENGINEERING FOR APPROVAL IF PRECAST STRUCTURES ARE PREFERRED. CONTACT DANIEL OLIVARES OF CITY ENGINEERING AT (608) 261-9285 FOR PRECAST APPROVALS, OR EMAIL SHOP DRAWINGS TO DAOLIVARES@CITYOFMADISON.COM.



MARK	REVISION	DATE	BY

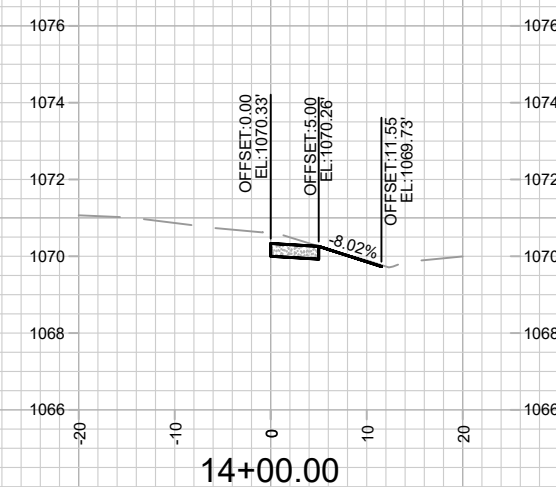
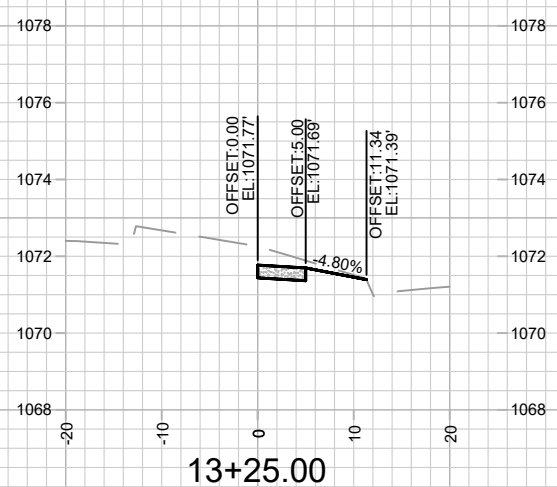
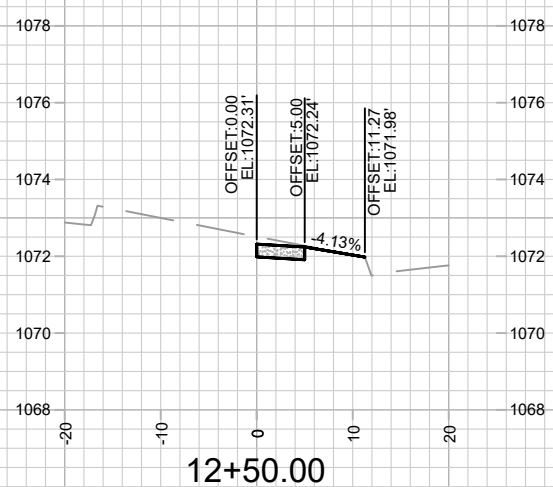
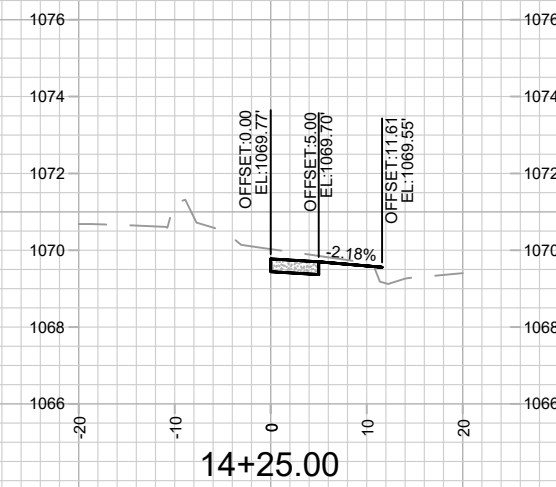
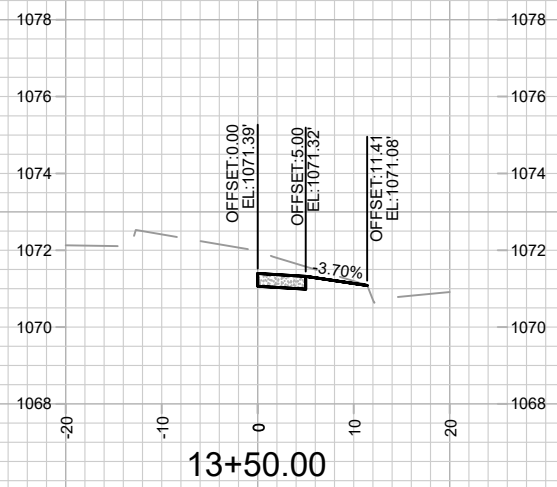
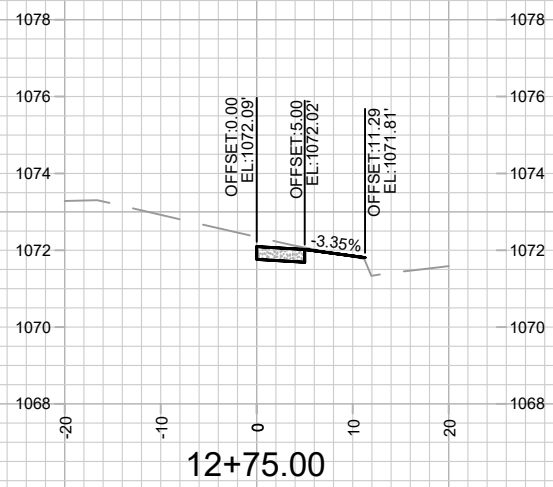
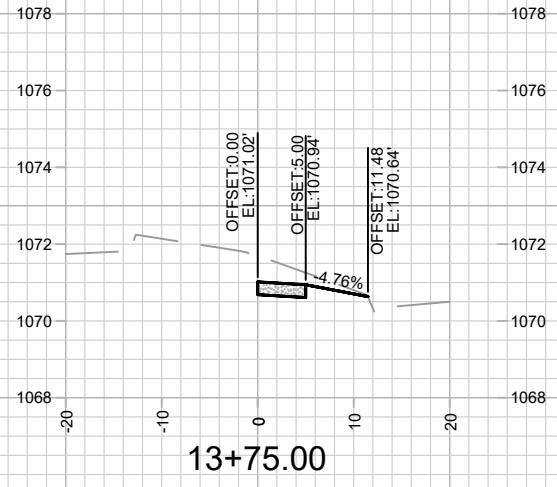
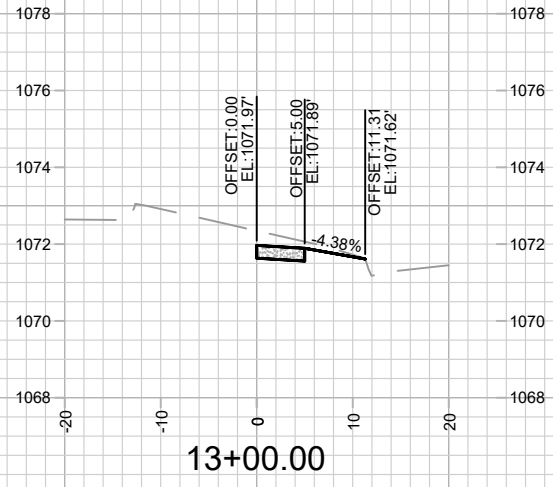
14937
MADISON, WI
9148
CONTRACT NO:

CROSS SECTION - GRAND CANYON DRIVE
686 GRAND CANYON DRIVE
M:\DESIGN\Projects\14937\CAD\Streets\14937\EN-Xsections.dwg



14937
X-1

Designed By: ##
Date: 4/8/2024 10:47 AM
Scale: 1" = 20'
X-1



MARK	REVISION	DATE	BY

Designed By: ##
Date: 4/8/2024 10:47 AM
Scale: 1" = 20'

14937
MADISON, WI
9148
CONTRACT NO:

CROSS SECTION - GRAND CANYON DRIVE
686 GRAND CANYON DRIVE
M:\DESIGN\Projects\14937\CAD\Streets\14937\EN-Xsections.dwg



14937
X-2