

Madison, Wisconsin

CITY OF MADISON

CITY ENGINEERING DIVISION

DEPARTMENT OF PUBLIC WORKS

PLAN OF PROPOSED IMPROVEMENT

PUBLIC IMPROVEMENT PROJECT APPROVED

APPROVED DATE: DEC. 05, 2023

BY THE COMMON COUNCIL OF MADISON, WISCONSIN

PUBLIC IMPROVEMENT DESIGN APPROVED BY:

Sep 30, 2024

City Engineer

Date

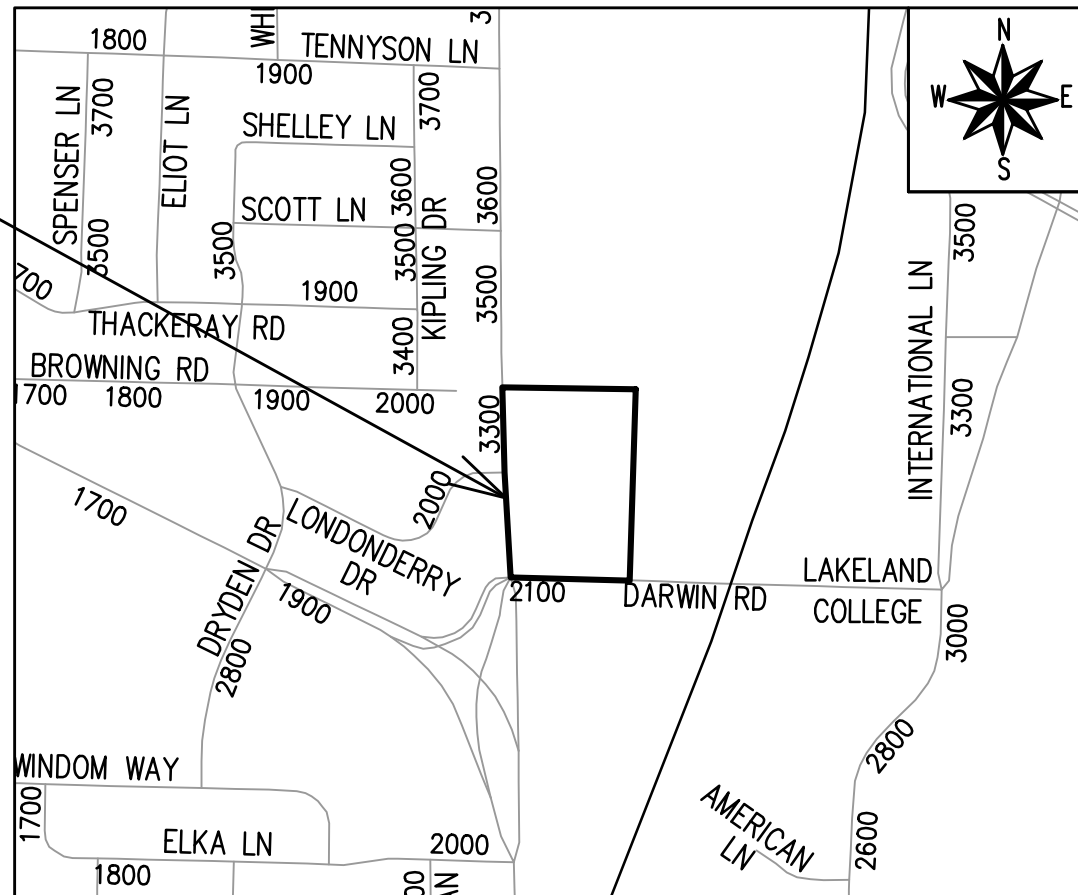
INDEX OF SHEETS

SHEET NO. D 1	STANDARD NOTES
SHEET NO. D 2	TYPICAL SECTIONS
SHEET NO. D 3	TREE EXCAVATION DETAIL
SHEET NO. P 1-P3	PLAN & PROFILES
SHEET NO. U 1-U2	SEWER PLAN & PROFILES
SHEET NO. U 3	SANITARY SEWER SCHEDULE
SHEET NO. U 4	STORM SEWER SCHEDULE
SHEET NO. E 1	ELECTRICAL PLAN
SHEET NO. PM 1	PAVEMENT MARKING PLAN
SHEET NO. L 1-L 3	LANDSCAPING PLAN
SHEET NO. X 1-X 6	CROSS SECTIONS
SHEET NO. MN 1	MAINTENANCE PLAN

2102-2202 DARWIN ROAD CSM

CITY PROJECT NO. 14973
CONTRACT NO. 9484

PROJECT LOCATION



REVISION 1: 11/20/2024
- REVISED SHEETS: U1-U4

STORM SEWER DESIGNED BY:

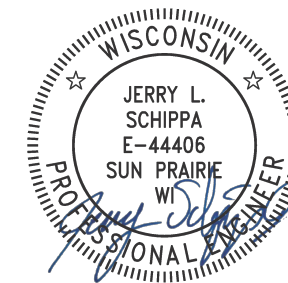
LATERALS ONLY

STREET DESIGNED BY:



Sep 30, 2024

ELECTRICAL DESIGNED BY:



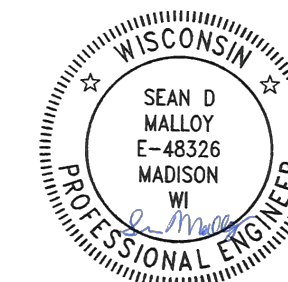
Sep 30, 2024

SANITARY SEWER DESIGNED BY:



Sep 30, 2024

PAVEMENT MARKING DESIGNED BY:



Sep 30, 2024

WATER DESIGNED BY:

LATERALS ONLY

PLOT SCALE: 1"=0' = 1"=0" XREF

PLOT NAME: ---

REV. DATE: 9/30/2024 10:22 AM

ORIGINATOR: CITY_OF_MADISON

ALL PROPOSED STREET TREE REMOVALS WITHIN THE RIGHT OF WAY SHALL BE REVIEWED BY CITY FORESTRY BEFORE THE PLAN COMMISSION MEETING. STREET TREE REMOVALS REQUIRE APPROVAL AND A TREE REMOVAL PERMIT ISSUED BY CITY FORESTRY. ANY STREET TREE REMOVALS REQUESTED AFTER THE DEVELOPMENT PLANS ARE APPROVED BY THE PLAN COMMISSION OR THE BOARD OF PUBLIC WORKS AND CITY FORESTRY WILL REQUIRE A MINIMUM OF A 72-HOUR REVIEW PERIOD WHICH SHALL INCLUDE THE NOTIFICATION OF THE ALDERPERSON WITHIN WHO'S DISTRICT IS AFFECTED BY THE STREET TREE REMOVAL(S) PRIOR TO A TREE REMOVAL PERMIT BEING ISSUED.

AS DEFINED BY SECTION 107.13 OF THE CITY OF MADISON STANDARD SPECIFICATIONS FOR PUBLIC WORKS CONSTRUCTION, LATEST EDITION: NO EXCAVATION IS PERMITTED WITHIN 5 FEET OF THE TRUNK OF THE STREET TREE OR WHEN CUTTING ROOTS OVER 3 INCHES IN DIAMETER. IF EXCAVATION IS NECESSARY, THE CONTRACTOR SHALL CONTACT MADISON CITY FORESTRY (266-4816) PRIOR TO EXCAVATION. CITY OF MADISON FORESTRY PERSONNEL SHALL ASSESS THE IMPACT TO THE TREE AND TO ITS ROOT SYSTEM PRIOR TO WORK COMMENCING.

NO TREES IN THE RIGHT OF WAY OR ON PUBLIC LANDS SHALL BE TRIMMED, PRUNED, REMOVED OR ADVERSELY AFFECTED IN ANY WAY UNTIL THE DEVELOPER HAS RECEIVED WRITTEN PERMISSION FROM THE CITY ENGINEER OR CITY FORESTER. SAID WRITTEN PERMISSION SHALL INCLUDE LANGUAGE INDICATING THAT SECTION 10.101 OF THE MADISON GENERAL ORDINANCES AND ADMINISTRATIVE PROCEDURE MEMORANDUM NO. 6-2, REFERRING TO NOTIFICATION OF PROPERTY OCCUPANTS AND/OR OWNERS, HAS BEEN COMPLIED WITH.

DEVELOPER MUST SUBMIT A TRAFFIC CONTROL PLAN TO CITY TRAFFIC ENGINEERING AT LEAST 14 DAYS PRIOR TO THE START OF WORK. WORK SHALL NOT PROCEED UNTIL AN APPROVED TRAFFIC CONTROL PLAN IS IN PLACE.

CONTACT THE PROJECT ENGINEER AND DESIGNER, FADI EL MUSA GONZALEZ, AT FELMUSAGONZALEZ@CITYOFMADISON.COM FOR CAD FILES AND ALIGNMENT DATA PRIOR TO STAKING.

UNDERDRAINS SHALL BE INSTALLED PER STANDARD DETAIL DRAWING 4.05 FOR 75' ON EACH SIDE OF THE LOW POINT, OR TO THE NEAREST CURB HIGH POINT. ALL UNDERDRAIN SHALL BE WRAPPED.

ALL GUTTERS SHALL DRAIN WITH A MINIMUM GRADE OF 0.5% TOWARD STORM SEWER INLETS.

ALL DITCHES SHALL DRAIN WITH A MINIMUM GRADE OF 0.5%

THE CROSS SLOPE OF SIDEWALKS AND BARRIER FREE SIDEWALK CURB RAMPS SHALL TYPICALLY BE 1.5%. THE LONGITUDINAL GRADE OF BARRIER FREE SIDEWALK CURB RAMPS SHALL NOT EXCEED 8.33%. ALL SIDEWALK RAMPS SHALL BE CONSTRUCTED ACCORDING TO S.D.D. 3.04. AT ALL OTHER LOCATIONS THE LONGITUDINAL GRADE OF SIDEWALKS SHALL NOT EXCEED 5.0 % OR THE ADJACENT STREET GRADE WHICHEVER IS GREATER NOR BE LESS THAN 0.5% AND SHALL DRAIN TOWARD STORM SEWER INLETS. SIDE SLOPES WITHIN TEN FEET OF A PUBLIC SIDEWALK SHALL NOT EXCEED 4:1. ALL SIDEWALK AND SIDEWALK RAMP ELEVATIONS AND GRADES SHALL BE FIELD VERIFIED AND SET TO COMPLY WITH THE CITY OF MADISON STANDARD SPECIFICATIONS AND THE A.D.A. GUIDELINES.

CURB STATION AND OFFSETS SHALL BE TO THE EDGE OF PAVEMENT UNLESS OTHERWISE INDICATED. CURB ELEVATIONS SHALL BE TO THE EDGE OF PAVEMENT UNLESS OTHERWISE INDICATED.

POWER POLES AND OTHER OBSTRUCTIONS SHALL BE MOVED TO PROVIDE 2 FEET MINIMUM OF CLEAR DISTANCE FROM ANY FACE OF CURB OR EDGE OF SIDEWALK UNLESS OTHERWISE INDICATED ON THE PLANS.

ANY INFORMATION SHOWN ON THIS PLAN, WHICH IS NOT PART OF THIS RIGHT-OF-WAY PROJECT, IS PRELIMINARY AND NOT FOR CONSTRUCTION.

THERE MAY BE EXISTING UTILITIES OR OTHER FEATURES WHICH ARE EITHER NOT SHOWN OR SHOWN INCORRECTLY ON THIS PLAN. IT IS THE RESPONSIBILITY OF THE DEVELOPER TO LOCATE AND IDENTIFY ALL UTILITIES AND TOPOGRAPHY WHICH MAY AFFECT THE CONSTRUCTION OF THESE IMPROVEMENTS.

ALL PERMANENT SIGNING AND POSTING WILL BE DETERMINED AND PROVIDED BY THE TRAFFIC ENGINEERING DIVISION, FOLLOWING CONSTRUCTION OF THESE IMPROVEMENTS.

THE DEVELOPER SHALL PROVIDE, INSTALL AND MAINTAIN ALL STREET END BARRICADES, SIGNING AND TRAFFIC CONTROL, AS REQUIRED BY THE CITY TRAFFIC ENGINEER.

PAVEMENT SAWCUTS SHALL BE AS DIRECTED BY THE CITY CONSTRUCTION ENGINEER. SAWCUTS SHOWN ON THE PLAN ARE APPROXIMATE.

CURB ON CUL DE SACS SHALL BE INSTALLED ACCORDING TO S.D.D 3.05.

ALL WORK IN THE RIGHT OF WAY AND PUBLIC EASEMENTS SHALL BE IN ACCORDANCE WITH THE CITY OF MADISON STANDARD SPECIFICATIONS FOR PUBLIC WORKS CONSTRUCTION, LATEST EDITION.

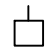


ALL PROPOSED IMPROVEMENTS IN THE RIGHT-OF-WAY ARE BASED ON SURVEY DATA PROVIDED BY THE DEVELOPER OR ITS CONSULTANT. IN THE CASE THAT THE PROPOSED IMPROVEMENTS CAN NOT BE INSTALLED PER THESE PLANS OR THE CITY OF MADISON STANDARD SPECIFICATION FOR PUBLIC WORKS CONSTRUCTION, LATEST EDITION, THE DEVELOPER SHALL BE RESPONSIBLE FOR THE COST OF EXTRA WORK DUE TO INACCURACIES OF THE SURVEY.


ALL UTILITY VERIFICATIONS AND ACCURACY OF THE DRAWINGS ARE THE RESPONSIBILITY OF THE DEVELOPER. ANY CONFLICTS THAT ARISE FROM MISSING OR ERRONEOUS INFORMATION WILL BE AT THE EXPENSE OF THE DEVELOPER. NO PRECAST STRUCTURES WILL BE APPROVED FOR STORM OR SANITARY SEWER UNTIL ALL POTENTIAL UTILITY CONFLICTS ARE RESOLVED.

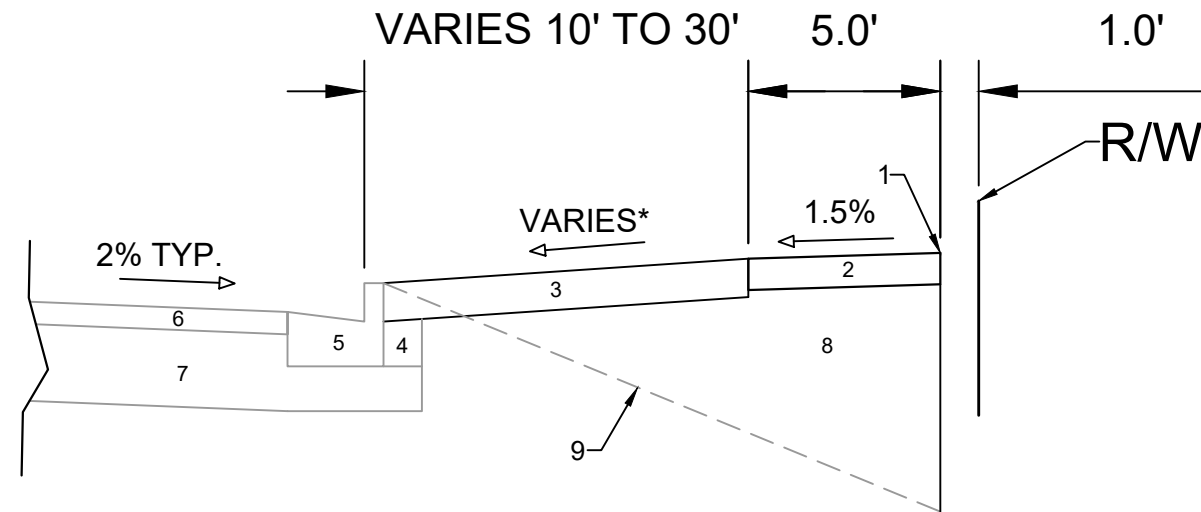
IN LOCATIONS WHERE PAVEMENT RESTORATION IS NOT IDENTIFIED ADJACENT TO CURB AND GUTTER REPLACEMENT, IT IS ASSUMED THAT CURB AND GUTTER WILL BE REPLACED WITHOUT DAMAGING ADJACENT PAVEMENT. IF DAMAGED, THE MILL AND OVERLAY LIMITS SHALL BE EXTENDED BY THE CITY CONSTRUCTION ENGINEER AS NECESSARY TO MEET THE STANDARD PATCHING CRITERIA.

CONVENTIONAL SIGNS

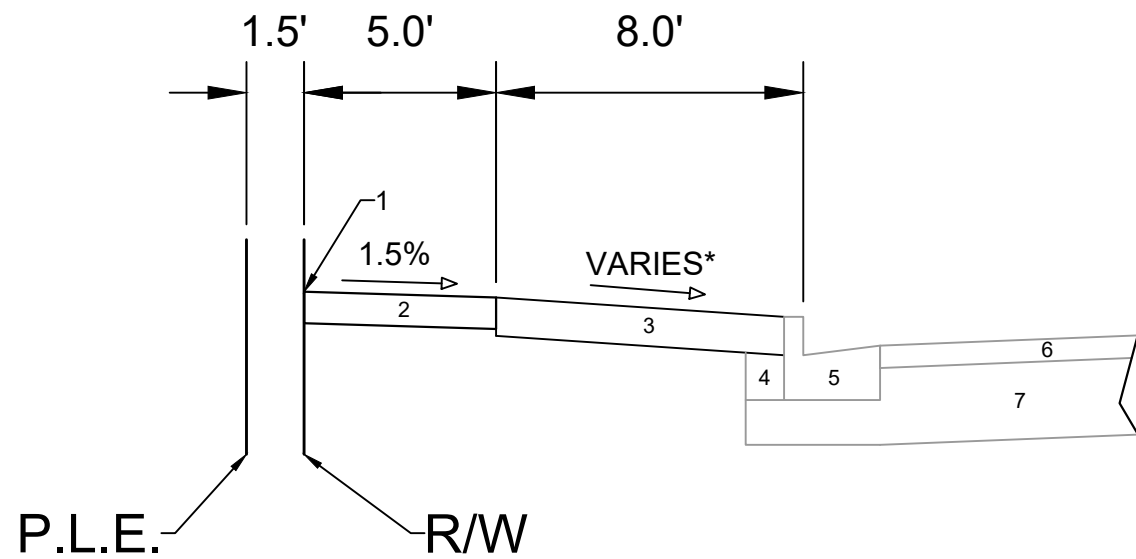
FIELD VERIFY ALL UTILITY LOCATIONS

GAS	—— G ——
STORM SEWER	—— ST ——
SANITARY SEWER	—— SAN ——
WATER	—— W ——
BURIED ELECTRIC	—— E ——
OVERHEAD ELECTRIC	—— OH ——
POWER POLE	
ADA COMPLIANT RAMP W/ DETECTABLE WARNING FIELD	
COMBUSTIBLE FLUIDS	

14973	MADISON, WI	9484	D-1		
STANDARD NOTES		2102-2202 DARWIN ROAD CSM		M:\DESIGN\Projects\14973\CAD\Streets\14973EN-Details.dwg	
14973		D-1			



TYPICAL SECTION
PACKERS AVE



TYPICAL SECTION
DARWIN RD

SPECIAL NOTES:

*SEE X-SHEETS FRO CROSS SLOPES

- 1 POINT REFERRED TO ON PROFILE
- 2 5" CONCRETE SIDEWALK
- 3 6" TOPSOIL, SEED AND MATTING
- 4 EX. FILL
- 5 EX. CURB TYPE 'A' TO REMAIN
- 6 EX. PAVEMENT SURFACE TO REMAIN
- 7 EX. ROAD BASE COURSE TO REMAIN
- 8 FILL
- 9 EX. GROUND SURFACE

DATE	BY
9/17/2024	6:00 PM
REVISION	
MARK	14973
Designed By: ##	14973
Scale:	D-2

14973
MADISON, WI
CONTRACT NO: 9484
M:\DESIGN\Projects\14973\CAD\Streets\14973EN-Details.dwg

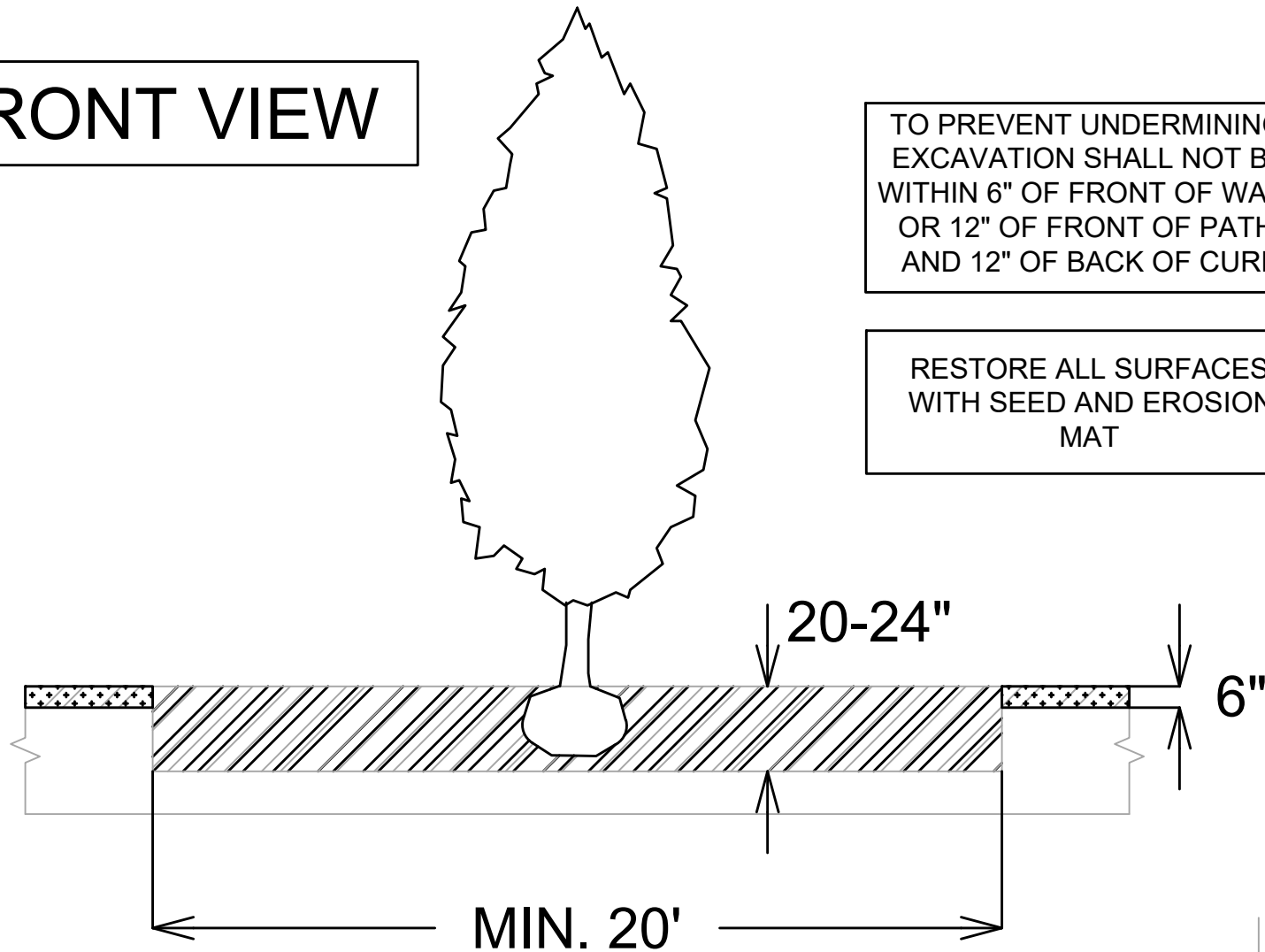


14973
D-2

TERRACE EXCAVATION FOR TREE PLANTING:

THIS INCLUDES ALL WORK NECESSARY TO EXCAVATE AREAS WITHIN GRASS TERRACES TO AN APPROPRIATE DEPTH SUITABLE FOR NEW TREE PLANTINGS. ALL WORK SHALL BE IN ACCORDANCE WITH ARTICLE 201 OF THE STANDARD SPECIFICATIONS. THE PROPOSED LOCATIONS FOR TREE PLANTINGS ARE IDENTIFIED ON THE LANDSCAPING PLAN INCLUDED WITHIN THIS PLAN SET. PRIOR TO THE CONTRACTOR STARTING THE EXCAVATION WORK, THE ENGINEER AND FORESTRY REPRESENTATIVE SHALL REVIEW THE PLAN LOCATIONS ON-SITE AND CONFIRM THAT NO CONFLICTS ARE ANTICIPATED. ONCE THE LOCATIONS MARKED, THE CONTRACTOR SHALL EXCAVATE THE TERRACE AREA TO A SUITABLE DEPTH FOR NEW TREE PLANTINGS, APPROXIMATELY TWENTY (20) INCHES TO TWENTY-FOUR (24) INCHES. THE TERRACE SHALL BE EXCAVATED TO A MINIMUM LENGTH OF TWENTY (20) FEET, BUT THAT MAY BE REDUCED BY THE CONSTRUCTION ENGINEER TO FIT SITE CONSTRAINTS AS NECESSARY. THE WIDTH OF THE TERRACE SHALL ALSO BE EXCAVATED TO AS CLOSE TO THE SIDEWALK/PATH AND CURB AS IS REASONABLE. WHILE PERFORMING THE EXCAVATION, THE CONTRACTOR SHALL TAKE CARE TO NOT UNDERMINE OR DAMAGE THE ADJACENT CURB OR SIDEWALK. IF DAMAGED DURING THE EXCAVATION PROCESS, THE DEVELOPER SHALL REPLACE CURB OR SIDEWALK/PATH AT THEIR COST. ONCE THE AREA IS EXCAVATED, THE CONTRACTOR SHALL BACKFILL THE EXCAVATED AREA WITH REGULAR TOPSOIL, AND THE SURFACE SHALL BE RESTORED WITH SEED AND EROSION MAT.

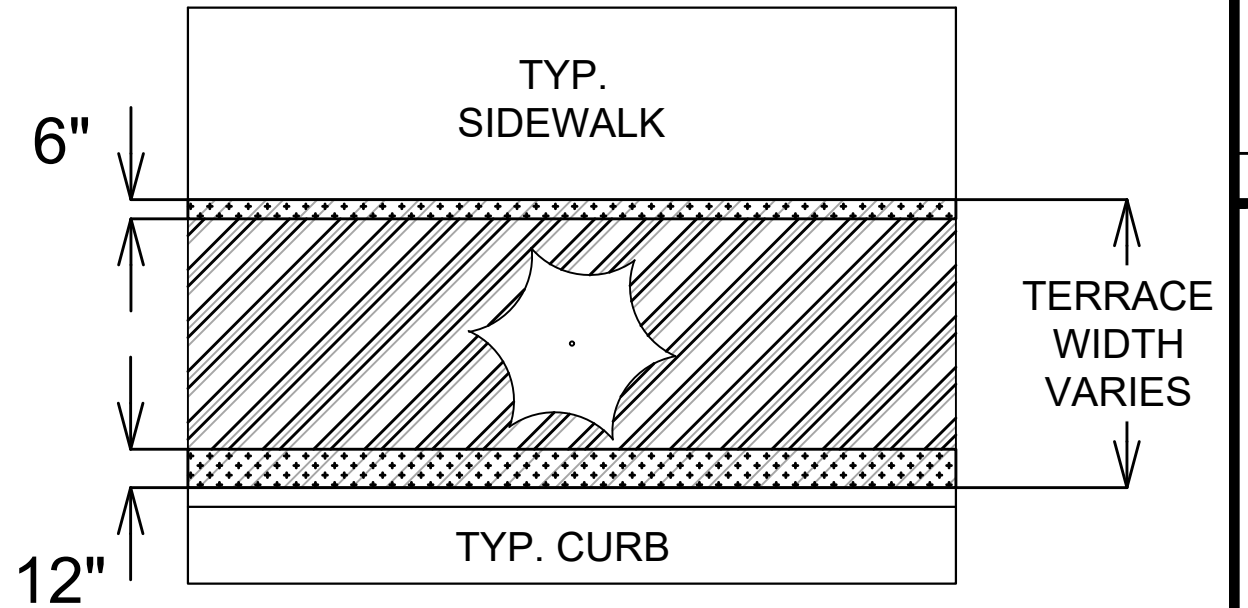
FRONT VIEW



TO PREVENT UNDERMINING, EXCAVATION SHALL NOT BE WITHIN 6" OF FRONT OF WALK OR 12" OF FRONT OF PATH, AND 12" OF BACK OF CURB

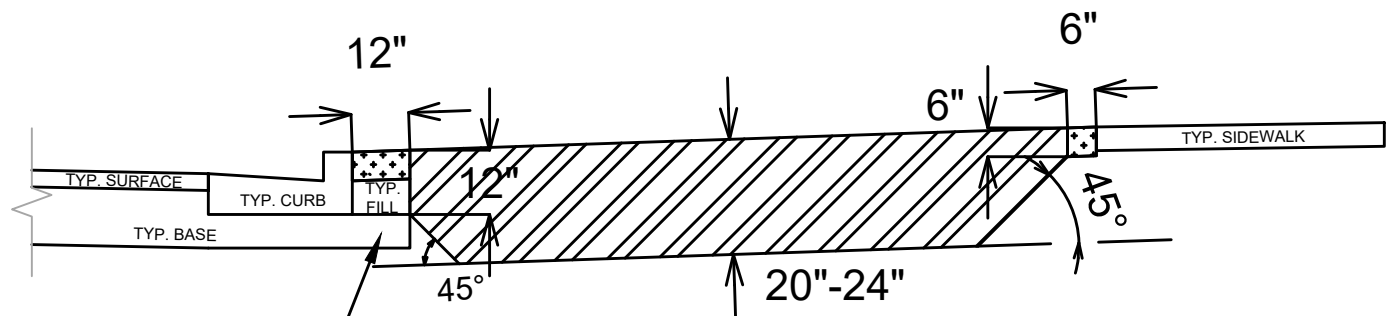
RESTORE ALL SURFACES WITH SEED AND EROSION MAT

TOP VIEW



LEGEND

- AREA TO BE EXCAVATED 20-24" DEEP AND BACKFILLED WITH TOPSOIL
- AREA TO BE 6" TOPSOIL



SECTION VIEW

SPECIAL NOTES:

REFER TO S.D.D. 2.01 FOR STANDARD PLANTING TECHNIQUE FOR TREES IN TURF AREAS.

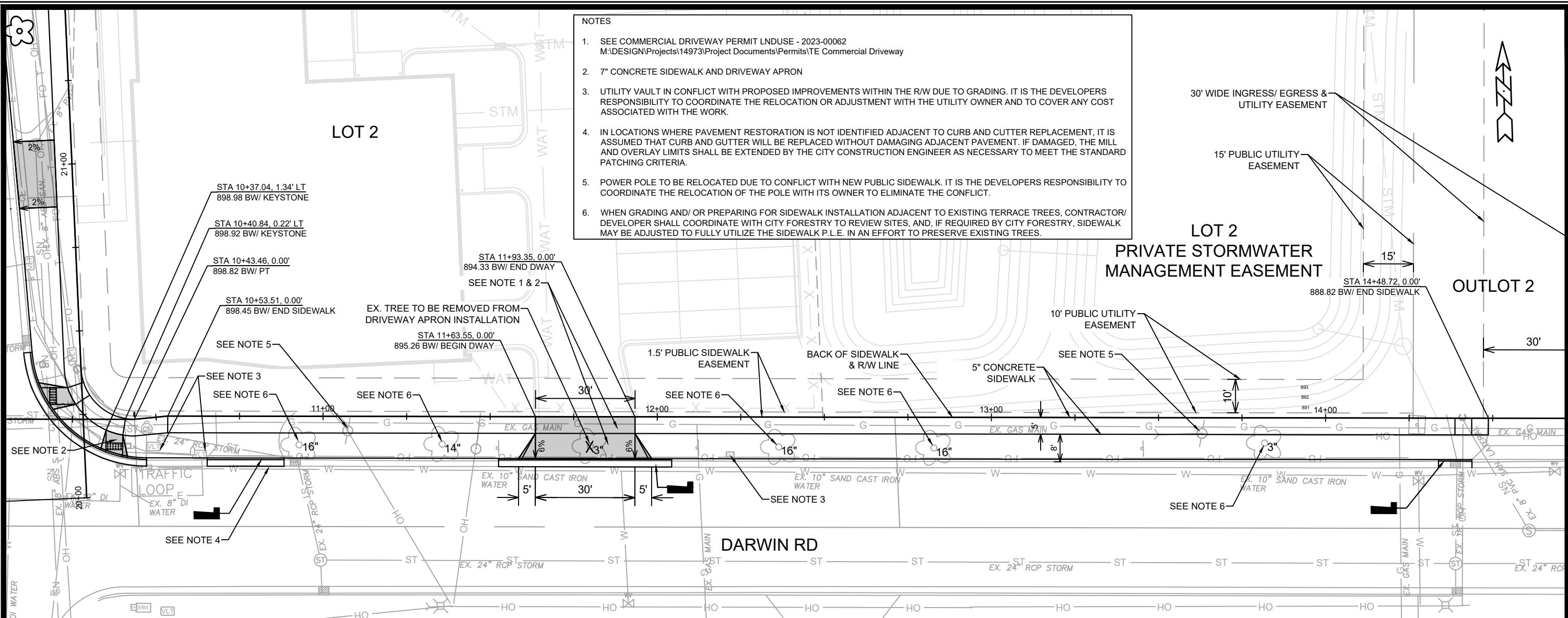
DATE	BY
REVISION	
Scale:	D-3
Designed By: #14973	

14973
MADISON, WI
9484
CONTRACT NO:

TREE EXCAVATION DETAIL
2102-2202 DARWIN ROAD CSM
M:\DESIGN\Projects\14973\CAD\Streets\14973EN-Details.dwg

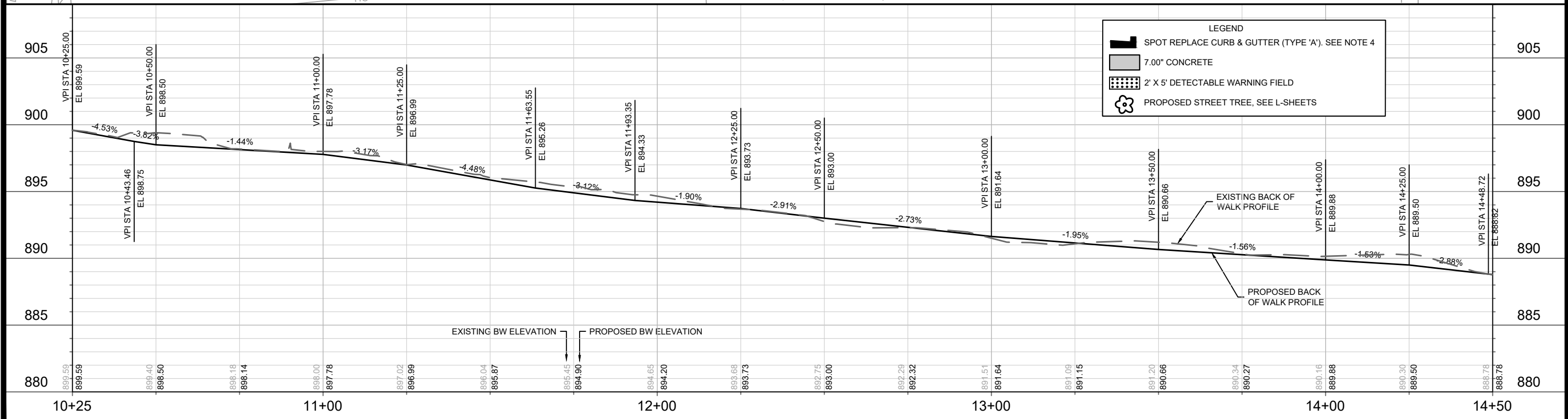


14973
D-3



- NOTES**
- SEE COMMERCIAL DRIVEWAY PERMIT LNDUSE - 2023-00062
M:\DESIGN\Projects\14973\Project Documents\Permits\TE Commercial Driveway
 - 7" CONCRETE SIDEWALK AND DRIVEWAY APRON
 - UTILITY VAULT IN CONFLICT WITH PROPOSED IMPROVEMENTS WITHIN THE R/W DUE TO GRADING. IT IS THE DEVELOPERS RESPONSIBILITY TO COORDINATE THE RELOCATION OR ADJUSTMENT WITH THE UTILITY OWNER AND TO COVER ANY COST ASSOCIATED WITH THE WORK.
 - IN LOCATIONS WHERE PAVEMENT RESTORATION IS NOT IDENTIFIED ADJACENT TO CURB AND CUTTER REPLACEMENT, IT IS ASSUMED THAT CURB AND GUTTER WILL BE REPLACED WITHOUT DAMAGING ADJACENT PAVEMENT. IF DAMAGED, THE MILL AND OVERLAY LIMITS SHALL BE EXTENDED BY THE CITY CONSTRUCTION ENGINEER AS NECESSARY TO MEET THE STANDARD PATCHING CRITERIA.
 - POWER POLE TO BE RELOCATED DUE TO CONFLICT WITH NEW PUBLIC SIDEWALK. IT IS THE DEVELOPERS RESPONSIBILITY TO COORDINATE THE RELOCATION OF THE POLE WITH ITS OWNER TO ELIMINATE THE CONFLICT.
 - WHEN GRADING AND/ OR PREPARING FOR SIDEWALK INSTALLATION ADJACENT TO EXISTING TERRACE TREES, CONTRACTOR/ DEVELOPER SHALL COORDINATE WITH CITY FORESTRY TO REVIEW SITES, AND, IF REQUIRED BY CITY FORESTRY, SIDEWALK MAY BE ADJUSTED TO FULLY UTILIZE THE SIDEWALK P.L.E. IN AN EFFORT TO PRESERVE EXISTING TREES.

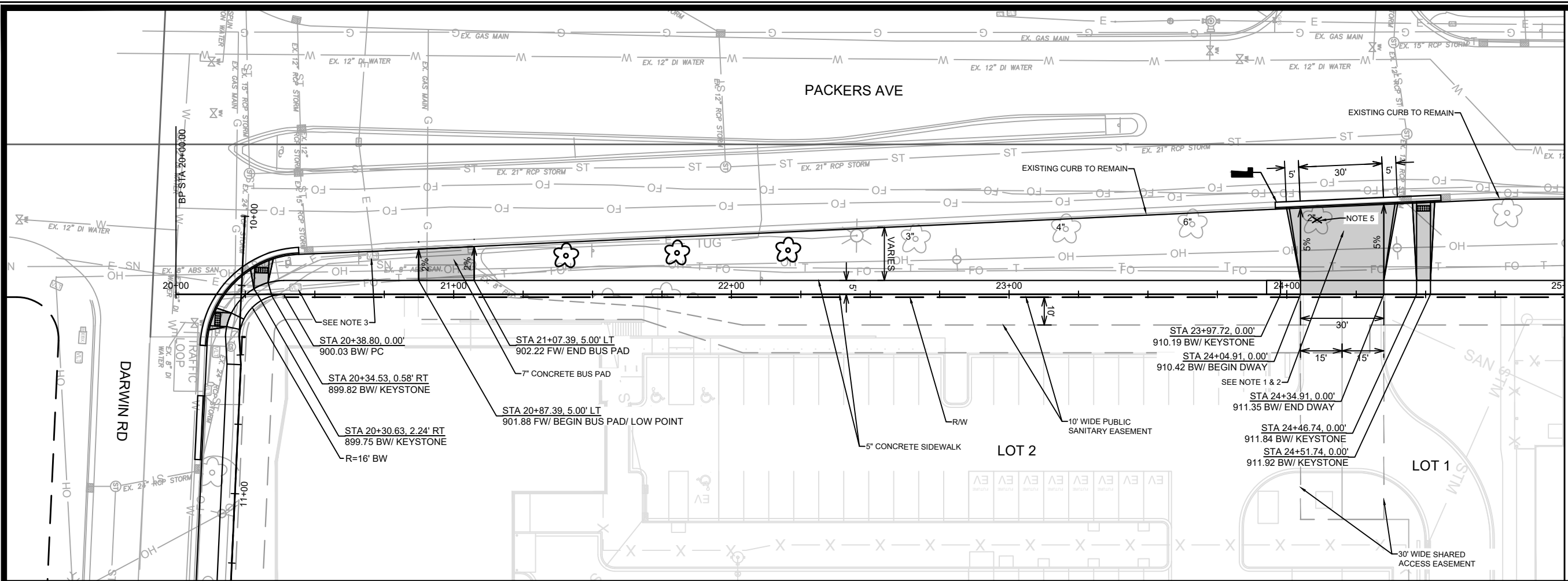
LOT 2 PRIVATE STORMWATER MANAGEMENT EASEMENT



LEGEND

- SPOT REPLACE CURB & GUTTER (TYPE 'A'). SEE NOTE 4
- 7.00" CONCRETE
- 2' X 5' DETECTABLE WARNING FIELD
- PROPOSED STREET TREE, SEE L-SHEETS

DATE	BY	Scale: 1:30	P-1
REVISION	DATE		
MARK	DESIGNED BY: ###	14973	
CONTRACT NO:		9484	
PLAN & PROFILE - DARWIN ROAD		14973	
2102-2202 DARWIN ROAD CSM		MADISON, WI	
M:\DESIGN\Projects\14973\CAD\Streets\14973EN-PnP.dwg			
CITY OF MADISON WISCONSIN			
14973			
P-1			

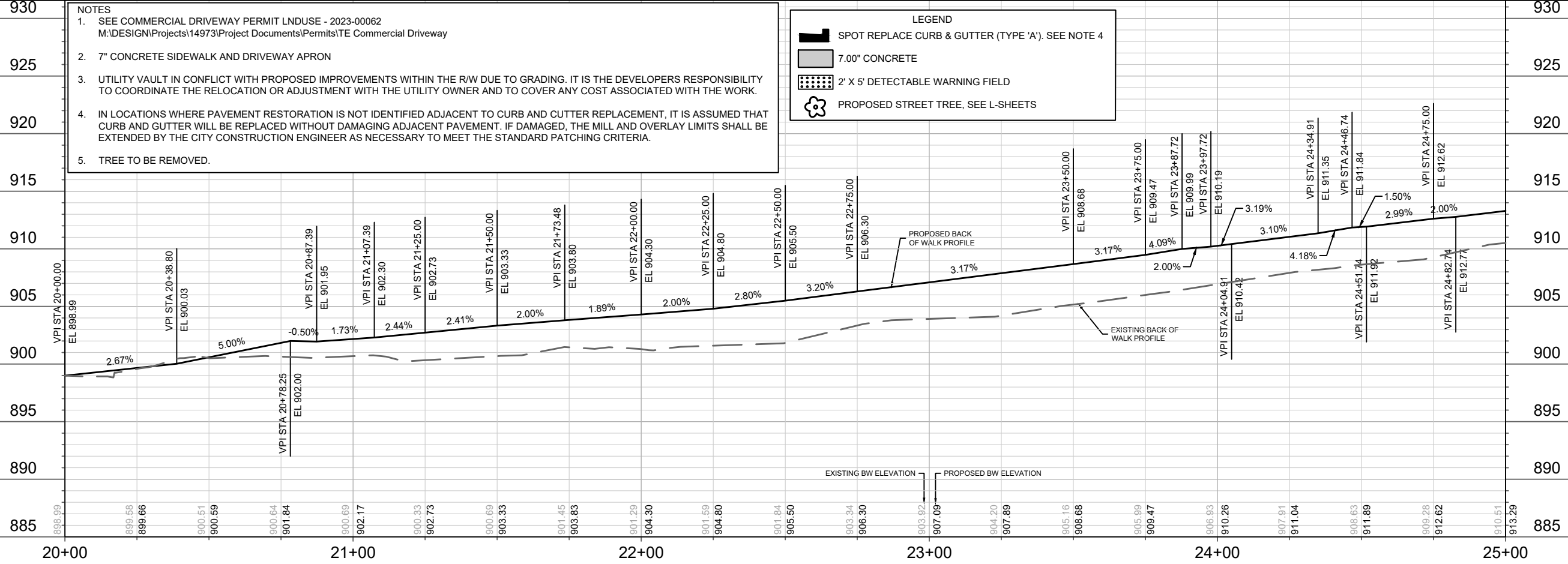


MATCH LINE 25+00.00

- NOTES**
- SEE COMMERCIAL DRIVEWAY PERMIT LNDUSE - 2023-00062
M:\DESIGN\Projects\14973\Project Documents\Permits\TE Commercial Driveway
 - 7" CONCRETE SIDEWALK AND DRIVEWAY APRON
 - UTILITY VAULT IN CONFLICT WITH PROPOSED IMPROVEMENTS WITHIN THE R/W DUE TO GRADING. IT IS THE DEVELOPERS RESPONSIBILITY TO COORDINATE THE RELOCATION OR ADJUSTMENT WITH THE UTILITY OWNER AND TO COVER ANY COST ASSOCIATED WITH THE WORK.
 - IN LOCATIONS WHERE PAVEMENT RESTORATION IS NOT IDENTIFIED ADJACENT TO CURB AND CUTTER REPLACEMENT, IT IS ASSUMED THAT CURB AND GUTTER WILL BE REPLACED WITHOUT DAMAGING ADJACENT PAVEMENT. IF DAMAGED, THE MILL AND OVERLAY LIMITS SHALL BE EXTENDED BY THE CITY CONSTRUCTION ENGINEER AS NECESSARY TO MEET THE STANDARD PATCHING CRITERIA.
 - TREE TO BE REMOVED.

LEGEND

- SPOT REPLACE CURB & GUTTER (TYPE 'A'). SEE NOTE 4
- 7.00" CONCRETE
- 2' X 5' DETECTABLE WARNING FIELD
- PROPOSED STREET TREE, SEE L-SHEETS



REVISION	DATE	BY

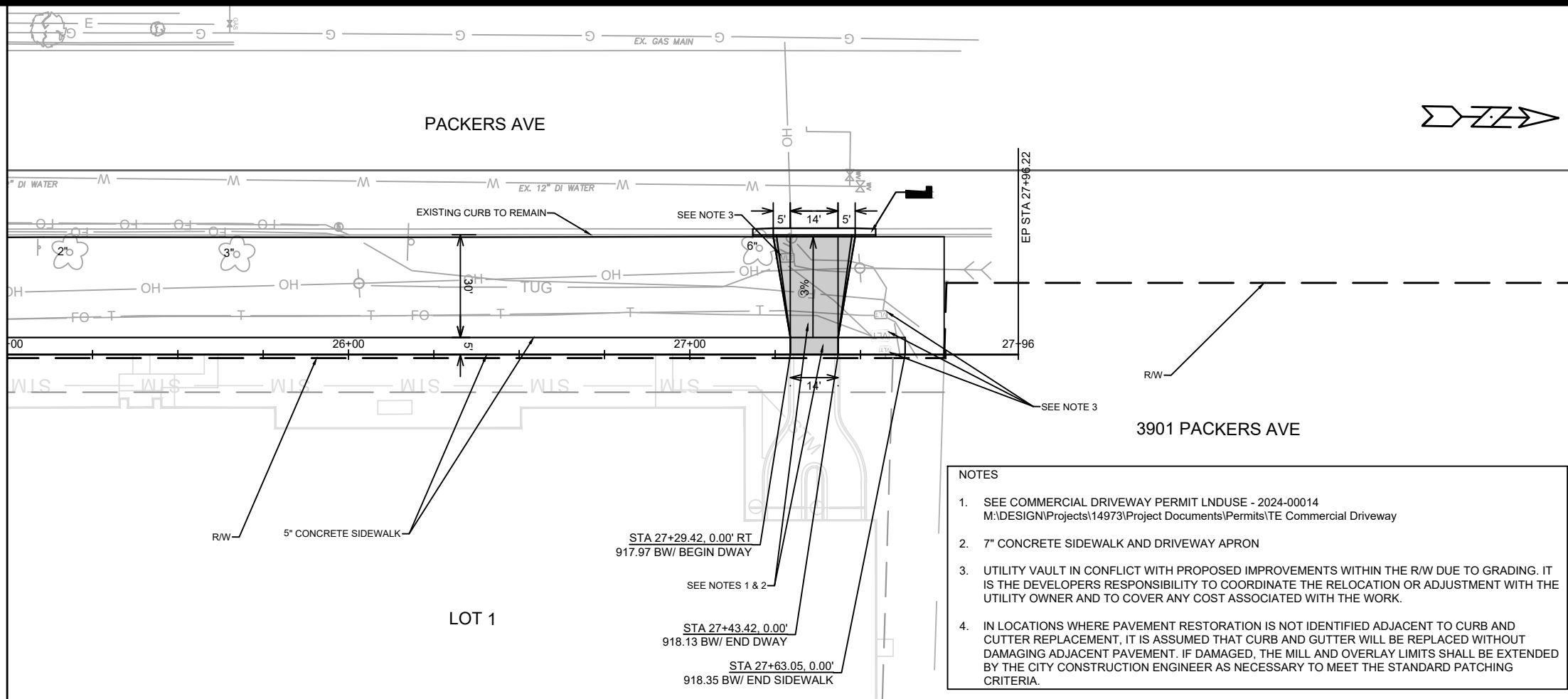
Designed By: 14973
Scale: 1" = 40'
P-2

14973
MADISON, WI
9484
CONTRACT NO:

PLAN & PROFILE - PACKERS AVENUE
2102-2202 DARWIN ROAD CSM
M:\DESIGN\Projects\14973\CAD\Streets\14973EN-PnP.dwg



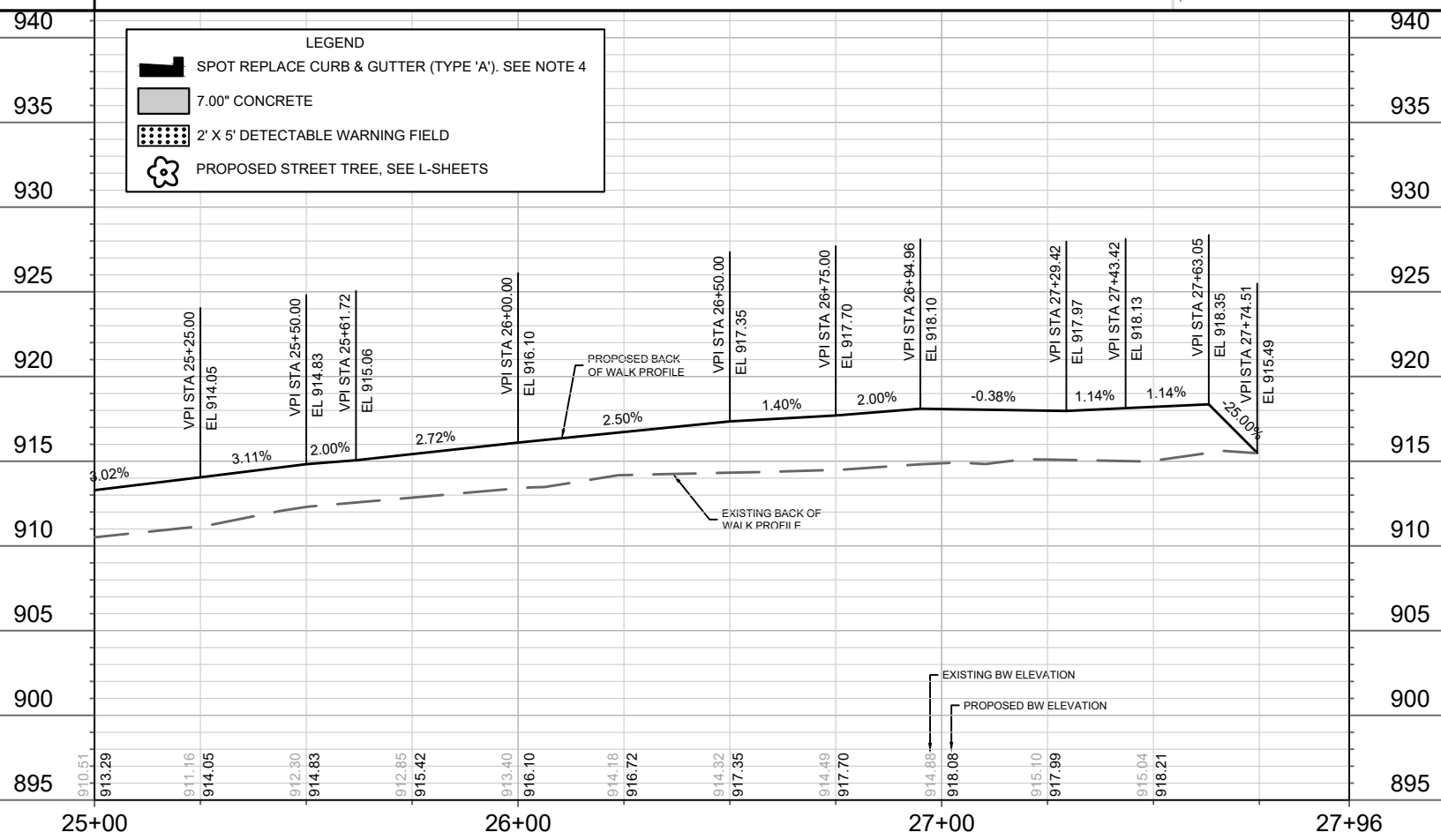
MATCH LINE 25+00.00



- NOTES**
- SEE COMMERCIAL DRIVEWAY PERMIT LNDUSE - 2024-00014
M:\DESIGN\Projects\14973\Project Documents\Permits\TE Commercial Driveway
 - 7" CONCRETE SIDEWALK AND DRIVEWAY APRON
 - UTILITY VAULT IN CONFLICT WITH PROPOSED IMPROVEMENTS WITHIN THE R/W DUE TO GRADING. IT IS THE DEVELOPERS RESPONSIBILITY TO COORDINATE THE RELOCATION OR ADJUSTMENT WITH THE UTILITY OWNER AND TO COVER ANY COST ASSOCIATED WITH THE WORK.
 - IN LOCATIONS WHERE PAVEMENT RESTORATION IS NOT IDENTIFIED ADJACENT TO CURB AND CUTTER REPLACEMENT, IT IS ASSUMED THAT CURB AND GUTTER WILL BE REPLACED WITHOUT DAMAGING ADJACENT PAVEMENT. IF DAMAGED, THE MILL AND OVERLAY LIMITS SHALL BE EXTENDED BY THE CITY CONSTRUCTION ENGINEER AS NECESSARY TO MEET THE STANDARD PATCHING CRITERIA.

LEGEND

- SPOT REPLACE CURB & GUTTER (TYPE 'A'). SEE NOTE 4
- 7.00" CONCRETE
- 2' X 5' DETECTABLE WARNING FIELD
- PROPOSED STREET TREE, SEE L-SHEETS



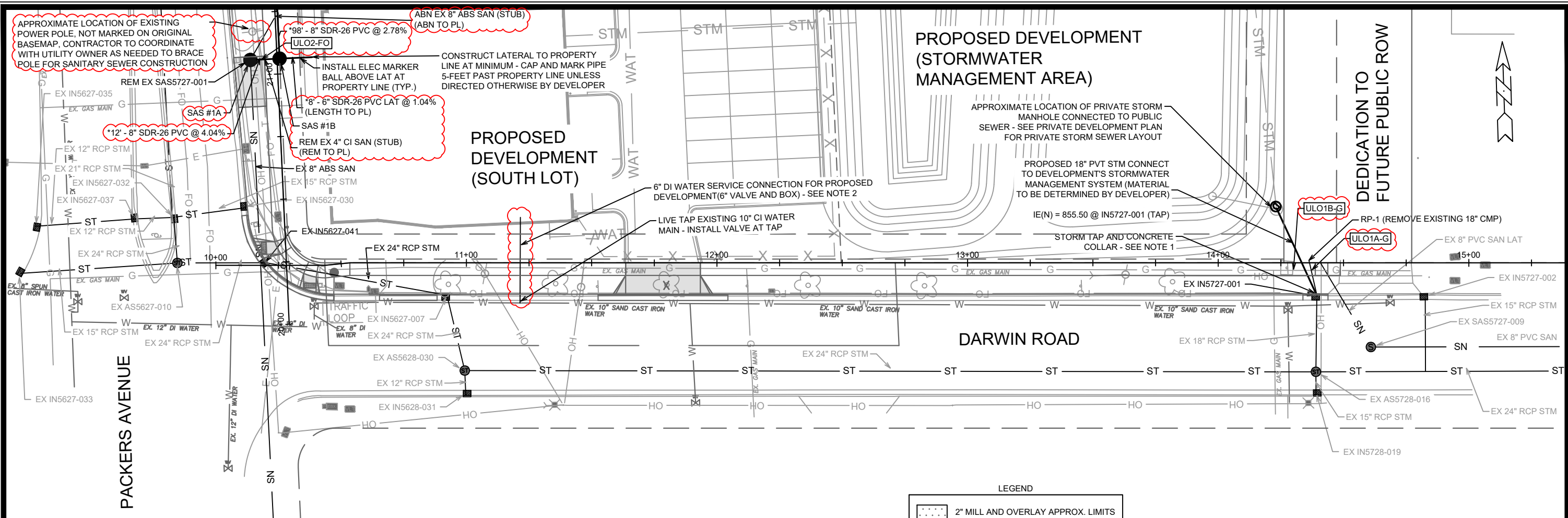
DATE	BY
REVISION	
MARK	
Designated By: ##	14973
Date: 9/27/2024 12:29 PM	
Scale: 1" = 40'	
P-3	

14973
MADISON, WI
9484
CONTRACT NO:

PLAN & PROFILE - PACKERS AVENUE
2102-2202 DARWIN ROAD CSM
M:\DESIGN\Projects\14973\CAD\Streets\14973EN-PnP.dwg



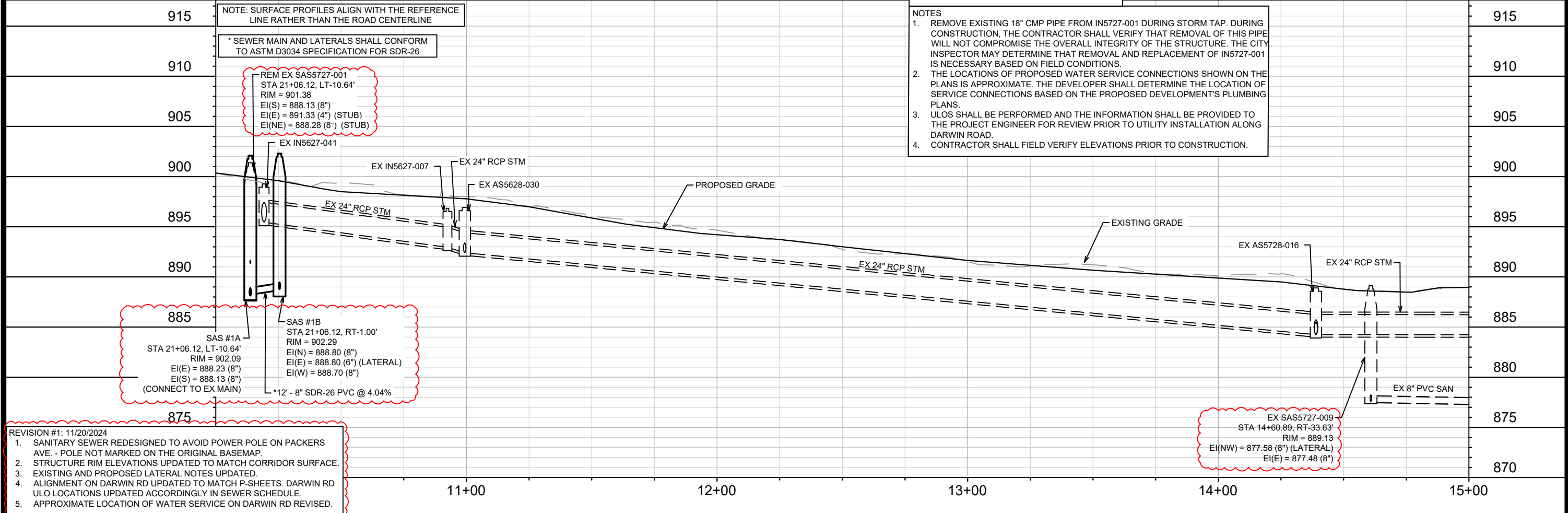
14973
P-3



LEGEND

2" MILL AND OVERLAY APPROX. LIMITS

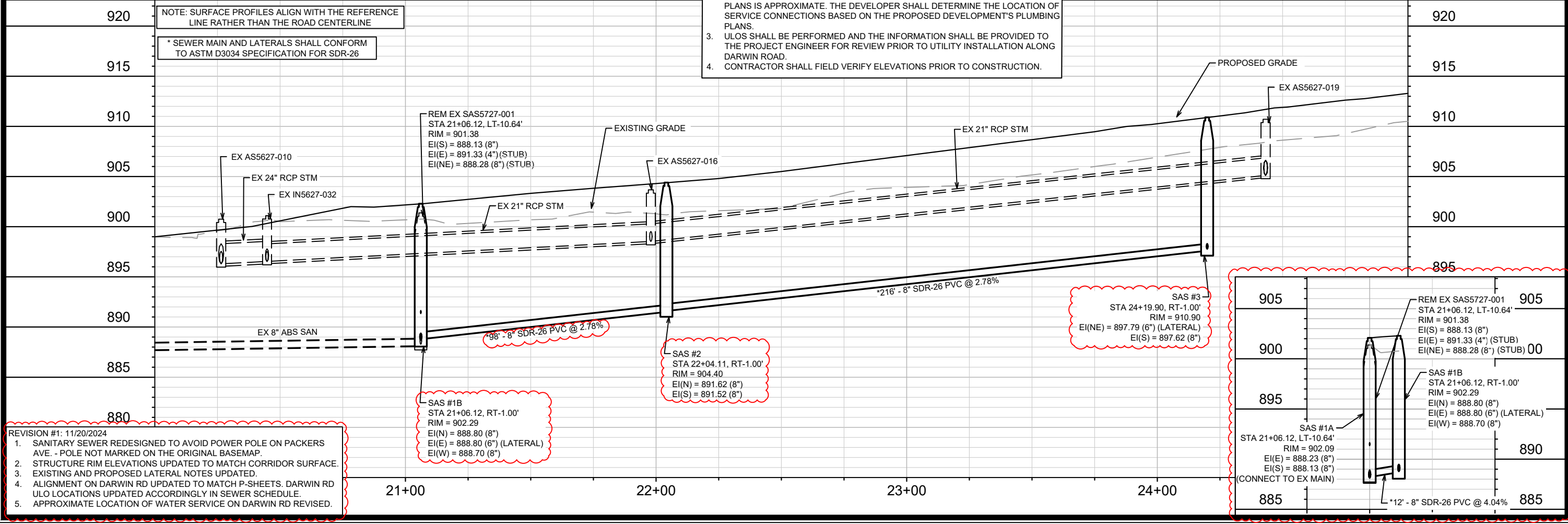
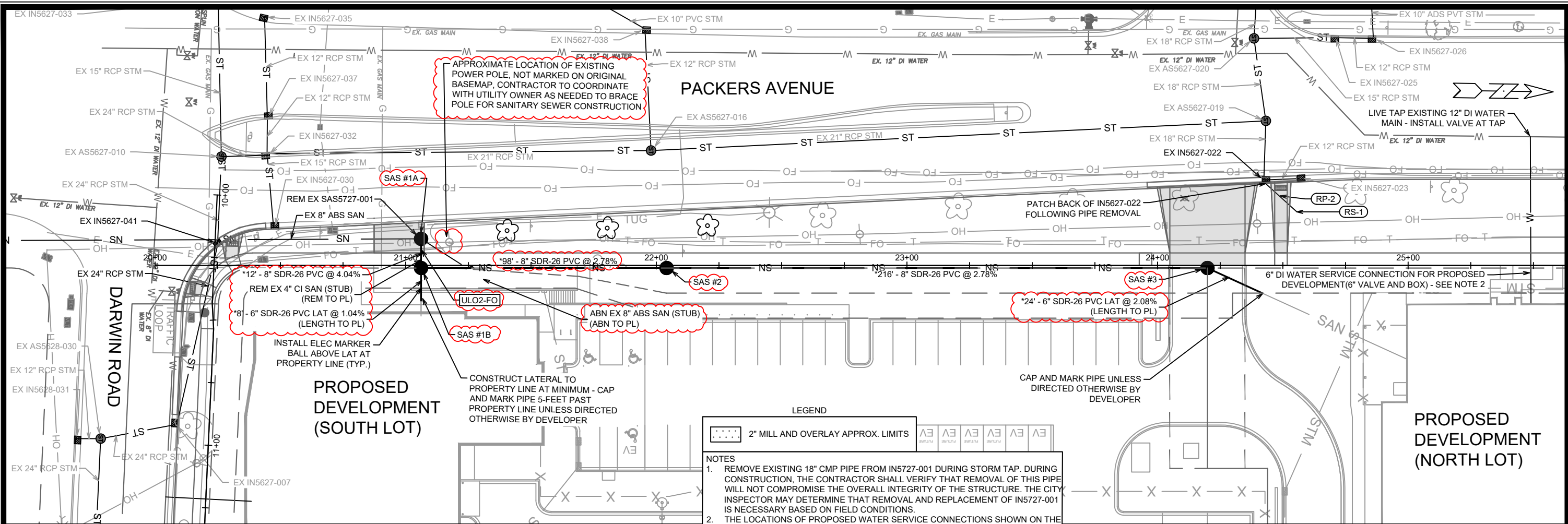
- NOTES**
1. REMOVE EXISTING 18" CMP PIPE FROM IN5727-001 DURING STORM TAP. DURING CONSTRUCTION, THE CONTRACTOR SHALL VERIFY THAT REMOVAL OF THIS PIPE WILL NOT COMPROMISE THE OVERALL INTEGRITY OF THE STRUCTURE. THE CITY INSPECTOR MAY DETERMINE THAT REMOVAL AND REPLACEMENT OF IN5727-001 IS NECESSARY BASED ON FIELD CONDITIONS.
 2. THE LOCATIONS OF PROPOSED WATER SERVICE CONNECTIONS SHOWN ON THE PLANS IS APPROXIMATE. THE DEVELOPER SHALL DETERMINE THE LOCATION OF SERVICE CONNECTIONS BASED ON THE PROPOSED DEVELOPMENT'S PLUMBING PLANS.
 3. ULOS SHALL BE PERFORMED AND THE INFORMATION SHALL BE PROVIDED TO THE PROJECT ENGINEER FOR REVIEW PRIOR TO UTILITY INSTALLATION ALONG DARWIN ROAD.
 4. CONTRACTOR SHALL FIELD VERIFY ELEVATIONS PRIOR TO CONSTRUCTION.



- REVISION #1: 11/20/2024**
1. SANITARY SEWER REDESIGNED TO AVOID POWER POLE ON PACKERS AVE. - POLE NOT MARKED ON THE ORIGINAL BASEMAP.
 2. STRUCTURE RIM ELEVATIONS UPDATED TO MATCH CORRIDOR SURFACE.
 3. EXISTING AND PROPOSED LATERAL NOTES UPDATED.
 4. ALIGNMENT ON DARWIN RD UPDATED TO MATCH P-SHEETS. DARWIN RD ULO LOCATIONS UPDATED ACCORDINGLY IN SEWER SCHEDULE.
 5. APPROXIMATE LOCATION OF WATER SERVICE ON DARWIN RD REVISED.

14973	11/20/24	EAC	U-1
14973	11/20/24	BY	
14973	11/20/24	DATE	
14973	11/20/24	REVISION	
14973	11/20/24	SAN SEWER REVISION	
14973	11/20/24	MARK	
14973	11/20/24	Designed By: EAC	Scale: 1" = 40'
14973	11/20/24	Date: 11/21/2024 8:19 AM	

14973
MADISON, WI
9484
CONTRACT NO.:
SEWER PLAN AND PROFILE - DARWIN ROAD
2102-2202 DARWIN ROAD CSM
M:\DESIGN\Projects\14973\CAD\Sewers\14973SWR-PipeNetwork.dwg
14973
U-1



- REVISION #1: 11/20/2024
- SANITARY SEWER REDESIGNED TO AVOID POWER POLE ON PACKERS AVE. - POLE NOT MARKED ON THE ORIGINAL BASEMAP.
 - STRUCTURE RIM ELEVATIONS UPDATED TO MATCH CORRIDOR SURFACE.
 - EXISTING AND PROPOSED LATERAL NOTES UPDATED.
 - ALIGNMENT ON DARWIN RD UPDATED TO MATCH P-SHEETS. DARWIN RD ULO LOCATIONS UPDATED ACCORDINGLY IN SEWER SCHEDULE.
 - APPROXIMATE LOCATION OF WATER SERVICE ON DARWIN RD REVISED.

LEGEND

..... 2" MILL AND OVERLAY APPROX. LIMITS

NOTES

- REMOVE EXISTING 18" CMP PIPE FROM IN5727-001 DURING STORM TAP. DURING CONSTRUCTION, THE CONTRACTOR SHALL VERIFY THAT REMOVAL OF THIS PIPE WILL NOT COMPROMISE THE OVERALL INTEGRITY OF THE STRUCTURE. THE CITY INSPECTOR MAY DETERMINE THAT REMOVAL AND REPLACEMENT OF IN5727-001 IS NECESSARY BASED ON FIELD CONDITIONS.
- THE LOCATIONS OF PROPOSED WATER SERVICE CONNECTIONS SHOWN ON THE PLANS IS APPROXIMATE. THE DEVELOPER SHALL DETERMINE THE LOCATION OF SERVICE CONNECTIONS BASED ON THE PROPOSED DEVELOPMENT'S PLUMBING PLANS.
- ULOS SHALL BE PERFORMED AND THE INFORMATION SHALL BE PROVIDED TO THE PROJECT ENGINEER FOR REVIEW PRIOR TO UTILITY INSTALLATION ALONG DARWIN ROAD.
- CONTRACTOR SHALL FIELD VERIFY ELEVATIONS PRIOR TO CONSTRUCTION.

DATE	11/20/24	EAC	BY	U-2
REVISION				
SAN SEWER REVISION				
MARK	14973	Scale: 1" = 40'		
Designed By: EAC	Date: 11/21/2024 8:20 AM			

14973
MADISON, WI
9484
CONTRACT NO:

SEWER PLAN AND PROFILE - PACKERS AVENUE
2102-2202 DARWIN ROAD CSM
M:\DESIGN\Projects\14973\CAD\Sewers\14973SWR-PipeNetwork.dwg

14973
U-2

SANITARY SEWER SCHEDULE

REVISION 1 - 11/20/2024 EAC

2102-2202 DARWIN ROAD CSM
PROJECT NO. 14973

SHEET NO.
U-3

SANITARY SEWER SCHEDULE

CITY OF MADISON

PROPOSED SANITARY STRUCTURES

SAS NO.	STATION	LOCATION (OFFSET)	TOP OF CASTING	E.I.	DEPTH	NOTES
PACKERS AVENUE						
● SAS #1A	21+06.12	LT-10.64	902.09	888.13	13.96	[1]
● SAS #1B	21+06.12	RT-1.00	902.29	888.70	13.59	[2]
● SAS #2	22+04.11	RT-1.00	904.40	891.52	12.88	[2]
● SAS #3	24+19.90	RT-1.00	910.90	897.62	13.28	[2]

PROPOSED SANITARY PIPES

FROM (DNSTM)	TO (UPSTM)	DWNSTRM E.I.	UPSTRM E.I.	PLAN LGTH (FT)	SLOPE (%)	PVC TYPE	NOTES
PACKERS AVENUE							
● SAS #1A	SAS #1B	888.23	888.70	12	4.04%	8"	SDR-26
● SAS #1B	SAS #2	888.80	891.52	98	2.78%	8"	SDR-26
SAS #2	SAS #3	891.62	897.62	216	2.78%	8"	SDR-26

SANITARY STRUCTURE REMOVALS & ABANDONMENTS

STRUC ID NO.	STATION	LOCATION (OFFSET)	TOP OF CASTING	E.I.	DEPTH	NOTES
PACKERS AVENUE						
● SAS5727-001	21+06.12	LT-10.64	901.38	888.13	13.25	[3]; REMOVE

SPECIFIC NOTES

- [1] CONNECT STRUCTURE TO EXISTING 8" ABS SANITARY SEWER MAIN @ 888.13
- [2] OFFSET CONE STRUCTURE - INSTALL RIM TO EAST SO CASTING IS OUTSIDE OF SIDEWALK
- [3] ABANDON / REMOVE EXISTING LATERAL CONNECTIONS TO PROPERTY LINE (4" CI AND 8" ABS) - SEE U-1 & U-2

STORM SEWER SCHEDULE

STORM SEWER SCHEDULE

CITY OF MADISON

STORM STRUCTURE REMOVALS & ABANDONMENTS

STRUC. NO.	ID NO.	STATION	LOCATION (OFFSET)	TYPE	DEPTH (FT)	NOTES
PACKERS AVENUE						
RS-1	AE5627-024	24+55.59	LT-21.41	12" RCP END/ENDWALL	--	

STORM PIPE REMOVALS & ABANDONMENTS

PIPE REMOVAL NO.	REMOVE FROM	REMOVE TO	LGTH (FT)	REM LGTH PAID (FT)	PIPE SIZE	PIPE TYPE	NOTES
DARWIN ROAD							
RP-1	IN5727-001	18" CMP END	17	17	18"	CMP	[1]
PACKERS AVENUE							
RP-2	IN5627-022	RS-1	19	19	12"	RCP	[2]

SEWER ULOs

ULO NO.	STATION	LOCATION (OFFSET)	TYPE	NOTES
DARWIN ROAD				
• ULO1A-G	14+37.11	RT-3.02	GAS	STM
• ULO1B-G	14+29.97	RT-3.00	GAS	STM
PACKERS AVENUE				
• ULO2-FO	21+06.12	LT-6.42	FIBER OPTIC	SAN

SPECIFIC NOTES

- [1] REMOVE OF EXISTING 18" CMP PIPE FROM IN5727-001 DURING STORM TAP.
- [2] PATCH BACK OF IN5627-022 FOLLOWING PIPE REMOVAL.

NOTE: PLAN LENGTH (PAY LENGTH) IS FROM CENTER OF STRUCTURE TO CENTER OF STRUCTURE. PIPE LENGTH IS ACTUAL LENGTH OF PIPE FROM STRUCTURE WALL TO STRUCTURE WALL. SLOPE CALCULATED USING PIPE LENGTH.

STANDARD NOTES:

- ABBREVIATIONS: AE = APRON ENDWALL; RCP = REINFORCED CONCRETE PIPE; HERCP = HORIZONTAL ELLIPTICAL REINFORCED CONCRETE PIPE; DNA = DOES NOT APPLY; SAS = SEWER ACCESS STRUCTURE; LP = LOW POINT INLET STRUCTURE; FP = FIELD POURED STRUCTURE; TR = TOP OF CONCRETE ROOF; NCM = NO CROWN MATCH FOR PIPES; UD = UNDERDRAIN
- TOP OF CASTING GRADE GIVEN IS THE TOP OF CURB FOR INLET STRUCTURES AND THE FLOWLINE OF THE CLOSED CASTING FOR SASs.
- TOP OF CONCRETE ROOF (TR) IS 1.25 BELOW TOP OF CASTING UNLESS OTHERWISE NOTED.
- ALL REINFORCED CONCRETE PIPES TO BE CLASS III UNLESS OTHERWISE NOTED.
- SURVEYOR TO CONFIRM THAT ALL INLET STATION / OFFSETS LINE UP WITH PROPOSED CURB AND GUTTER.
- ALL REBAR FOR FIELD POUR STRUCTURES SHALL BE EPOXY COATED. ANY EXPOSED STEEL SHALL BE TOUCHED UP OR RECOATED PRIOR TO USE.
- ALL FIELD POURED SAS STORM STRUCTURES SHALL BE CONSTRUCTED IN ACCORDANCE WITH STANDARD DETAIL DRAWING 5.7.3.
- ALL PRECAST SAS STORM STRUCTURES SHALL BE CONSTRUCTED IN ACCORDANCE WITH STANDARD DETAIL DRAWING 5.7.5.
- ALL STRUCTURES CALLED OUT AS FIELD POURED SHALL BE FIELD POURED. ALL OTHER STRUCTURES (NOT INDICATED AS FIELD POURED) SHALL BE SUBMITTED TO CITY ENGINEERING FOR APPROVAL IF PRECAST STRUCTURES ARE PREFERRED. CONTACT ERIC CEFALU OF CITY ENGINEERING AT (608) 243-5894 FOR PRECAST APPROVALS, FAX SHOP DRAWINGS TO (608)264-9275, OR EMAIL SHOP DRAWINGS TO ECEFALU@CITYOFMADISON.COM.

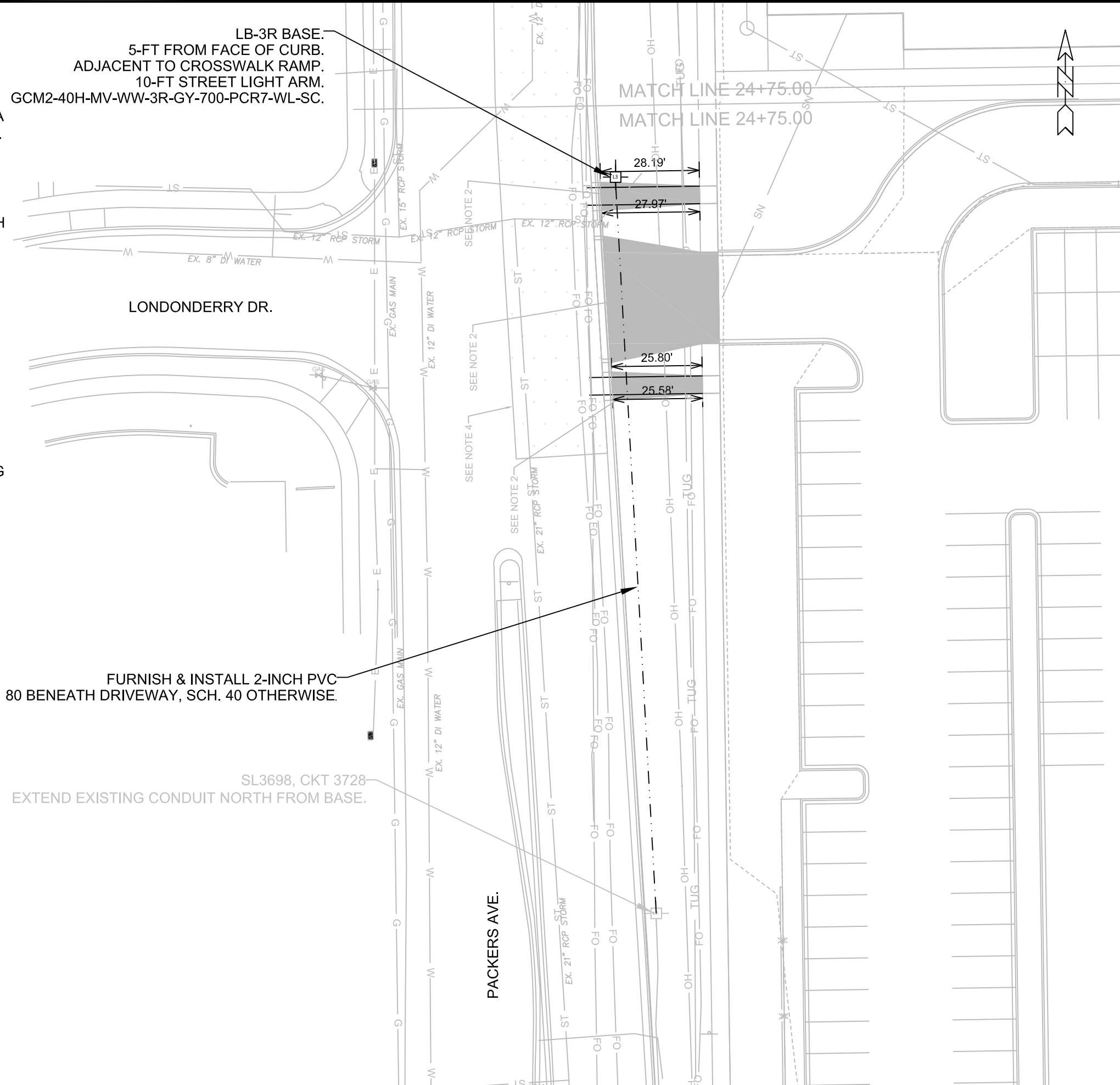
ELECTRICAL NOTES:

1. ALL LOCATIONS ARE APPROXIMATE, THE TRAFFIC ENGINEER SHALL APPROVE FINAL LOCATIONS, INCLUDING SETBACK, IN THE FIELD. THE CONTRACTOR SHALL NOTIFY JERRY SCHIPPA 608 267 1969, 24 HOURS PRIOR TO NEEDING BASES LOCATED.
2. THE CONTRACTOR SHALL DO ALL WORK IN ACCORDANCE WITH "CITY OF MADISON STANDARD SPECIFICATIONS FOR PUBLIC WORKS CONSTRUCTION, 2023 EDITION" AND ALL ADDENDUM THERETO.
3. ALL CONDUITS SHALL BE 2-INCH PVC, SCHEDULE 80 BENEATH PAVEMENT, AND 2-INCH SCHEDULE 40 OTHERWISE, UNLESS OTHERWISE NOTED.
4. THE CONTRACTOR SHALL CALL THE TRAFFIC ENGINEERING SHOP AT LEAST 24-HOURS PRIOR TO NEEDING INSPECTION ON BURIED CONDUIT OR BASES.
5. ANY WORK COMPLETED WITHOUT INSPECTION IS SUBJECT TO REJECTION.
6. CONTRACTOR SHALL NOTIFY JERRY SCHIPPA (608) 267-1969 AT THE START OF THE PROJECT TO SCHEDULE MG&E TO REMOVE THE EXISTING STREET LIGHT ON THE MG&E WOOD POLE AT PACKERS AVE. & LONDONDERRY.
7. THE CONTRACTOR SHALL ARRANGE FOR PICKUP OF THE FOLLOWING CITY FURNISHED MATERIALS, BY CALLING ED SMITH (608) 266 9034, AT LEAST 24 HOURS PRIOR TO NEEDING MATERIALS.
 - 7.1. (4) 1-INCH X 40-INCH ANCHOR BOLT FOR LB-3R BASE.

QUANTITIES:

1	EA	60415	LB-3R BASE
155	LF	60232	FURNISH AND INSTALL PVC SCHEDULE 40
60	LF	60230	FURNISH AND INSTALL PVC SCHEDULE 80
215	LF	60261	ELECTRICAL TRENCH
245	LF	60253	FURNISH & INSTALL 3 #4 AND 1 #8 WIRES IN EXISTING OR CONTRACTOR INSTALLED CONDUIT.
1	EA		FURNISH & INSTALL 30-FT 11 GAUGE STREET LIGHT POLE
1	EA		FURNISH & INSTALL 10-FT STREET LIGHT ARM
1	EA		FURNISH & INSTALL STREET LIGHT FIXTURES

ACCEPTANCE OF PROJECT WILL BE UPON DEMONSTRATING EXISTING STREET LIGHTING CIRCUIT HAS BEEN EXTENDED TO THE NEW STREET LIGHT AND ALL STREET LIGHTS ARE FUNCTIONAL.




LB-3R BASE.
5-FT FROM FACE OF CURB.
ADJACENT TO CROSSWALK RAMP.
10-FT STREET LIGHT ARM.
GCM2-40H-MV-WW-3R-GY-700-PCR7-WL-SC.

LONDONDERRY DR.

FURNISH & INSTALL 2-INCH PVC
SCH. 80 BENEATH DRIVEWAY, SCH. 40 OTHERWISE.

SL3698, CKT 3728
EXTEND EXISTING CONDUIT NORTH FROM BASE.

PACKERS AVE.

	14973 E-1	ELECTRICAL PLANS 2102-2202 DARWIN ROAD MADISON, WI	CONTRACT NO: 9484	Scale: 1" = 30' Date: 3/18/2024 REVISION MARK DESIGNED BY: JLS
---	---------------------	--	----------------------	--

Londonderry Drive

Continental Crosswalk Epoxy

Packers Avenue



PAVEMENT MARKING PLAN

2202 DARWIN ROAD

M:\DESIGN\Projects\14973\CAD\Traffic\14973TE-PavementMarking.dwg

14973

MADISON, WI

9484

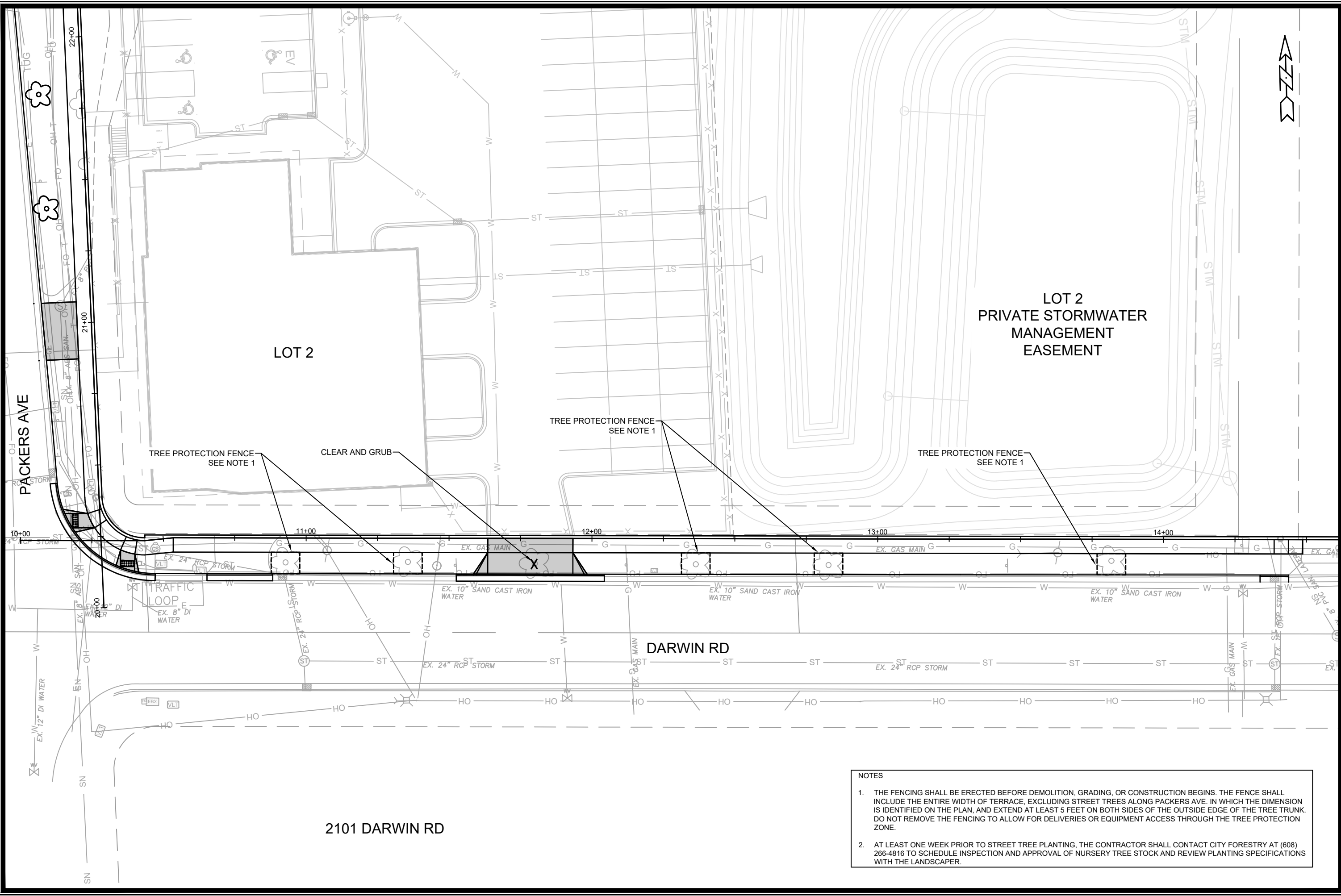
CONTRACT NO:

14973

PM-1

MARK	REVISION	DATE	BY
14973	Designed By: SDM	Date: 5/21/2024 5:44 PM	Scale: 1:10

PM-1



LOT 2
PRIVATE STORMWATER
MANAGEMENT
EASEMENT

TREE PROTECTION FENCE
SEE NOTE 1

CLEAR AND GRUB

TREE PROTECTION FENCE
SEE NOTE 1

TREE PROTECTION FENCE
SEE NOTE 1

DARWIN RD

2101 DARWIN RD

- NOTES
1. THE FENCING SHALL BE ERECTED BEFORE DEMOLITION, GRADING, OR CONSTRUCTION BEGINS. THE FENCE SHALL INCLUDE THE ENTIRE WIDTH OF TERRACE, EXCLUDING STREET TREES ALONG PACKERS AVE. IN WHICH THE DIMENSION IS IDENTIFIED ON THE PLAN, AND EXTEND AT LEAST 5 FEET ON BOTH SIDES OF THE OUTSIDE EDGE OF THE TREE TRUNK. DO NOT REMOVE THE FENCING TO ALLOW FOR DELIVERIES OR EQUIPMENT ACCESS THROUGH THE TREE PROTECTION ZONE.
 2. AT LEAST ONE WEEK PRIOR TO STREET TREE PLANTING, THE CONTRACTOR SHALL CONTACT CITY FORESTRY AT (608) 266-4816 TO SCHEDULE INSPECTION AND APPROVAL OF NURSERY TREE STOCK AND REVIEW PLANTING SPECIFICATIONS WITH THE LANDSCAPER.

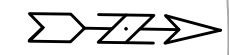
MARK	REVISION	DATE	BY
14973	14973	9/17/2024	PM
Designed By: ##	Scale: 1:30		

14973
MADISON, WI
CONTRACT NO: 9484

LANDSCAPING PLAN - DARWIN RD
2102-2202 DARWIN ROAD CSM
M:\DESIGN\Projects\14973\CAD\Streets\14973EN-Landscaping Plan.dwg



14973
L-1



2033 LONDONDERRY DR


PACKERS AVE

DARWIN RD

2101 DARWIN RD

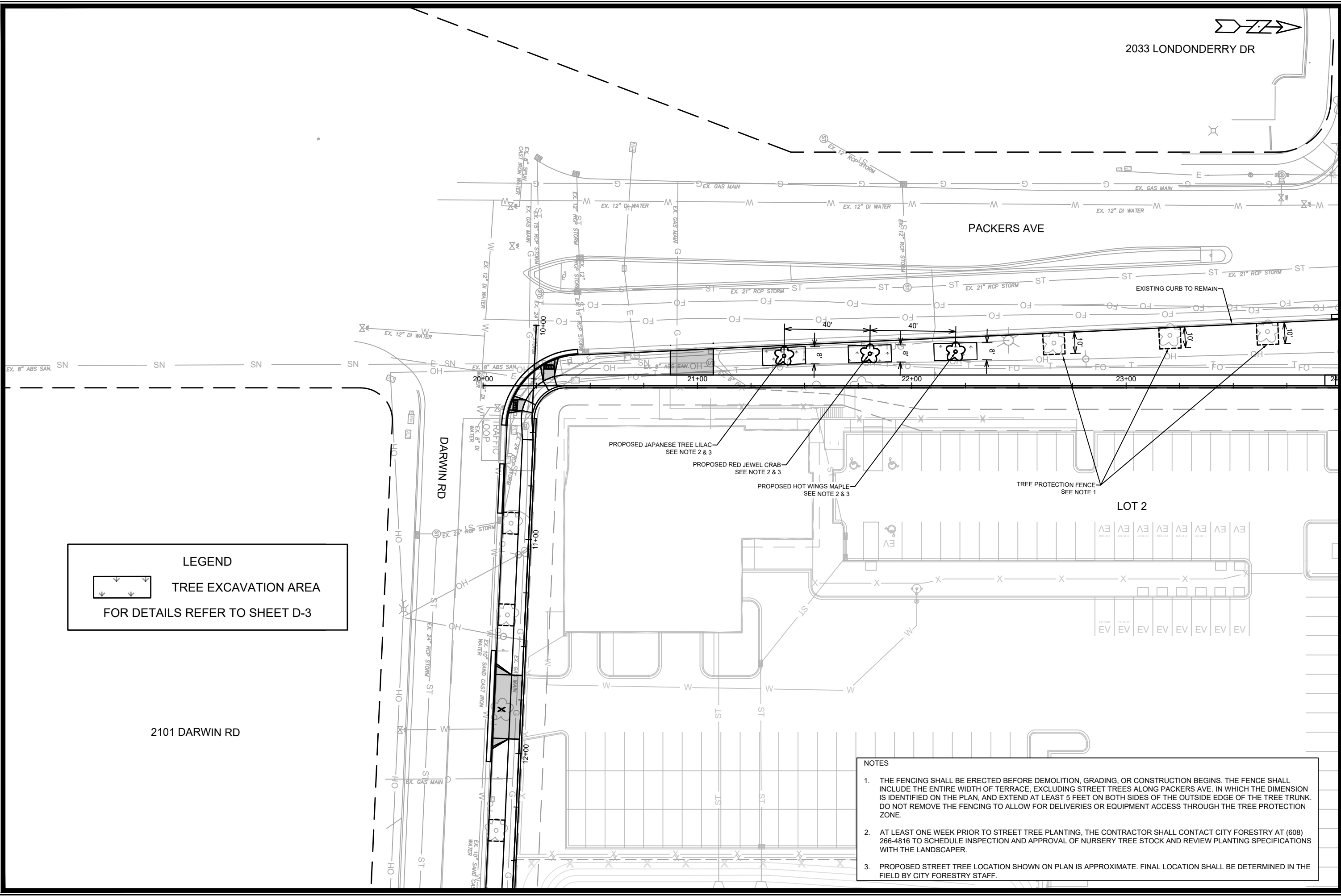
LOT 2

LEGEND

 TREE EXCAVATION AREA
FOR DETAILS REFER TO SHEET D-3

NOTES

1. THE FENCING SHALL BE ERECTED BEFORE DEMOLITION, GRADING, OR CONSTRUCTION BEGINS. THE FENCE SHALL INCLUDE THE ENTIRE WIDTH OF TERRACE, EXCLUDING STREET TREES ALONG PACKERS AVE. IN WHICH THE DIMENSION IS IDENTIFIED ON THE PLAN, AND EXTEND AT LEAST 5 FEET ON BOTH SIDES OF THE OUTSIDE EDGE OF THE TREE TRUNK. DO NOT REMOVE THE FENCING TO ALLOW FOR DELIVERIES OR EQUIPMENT ACCESS THROUGH THE TREE PROTECTION ZONE.
2. AT LEAST ONE WEEK PRIOR TO STREET TREE PLANTING, THE CONTRACTOR SHALL CONTACT CITY FORESTRY AT (608) 266-4816 TO SCHEDULE INSPECTION AND APPROVAL OF NURSERY TREE STOCK AND REVIEW PLANTING SPECIFICATIONS WITH THE LANDSCAPER.
3. PROPOSED STREET TREE LOCATION SHOWN ON PLAN IS APPROXIMATE. FINAL LOCATION SHALL BE DETERMINED IN THE FIELD BY CITY FORESTRY STAFF.



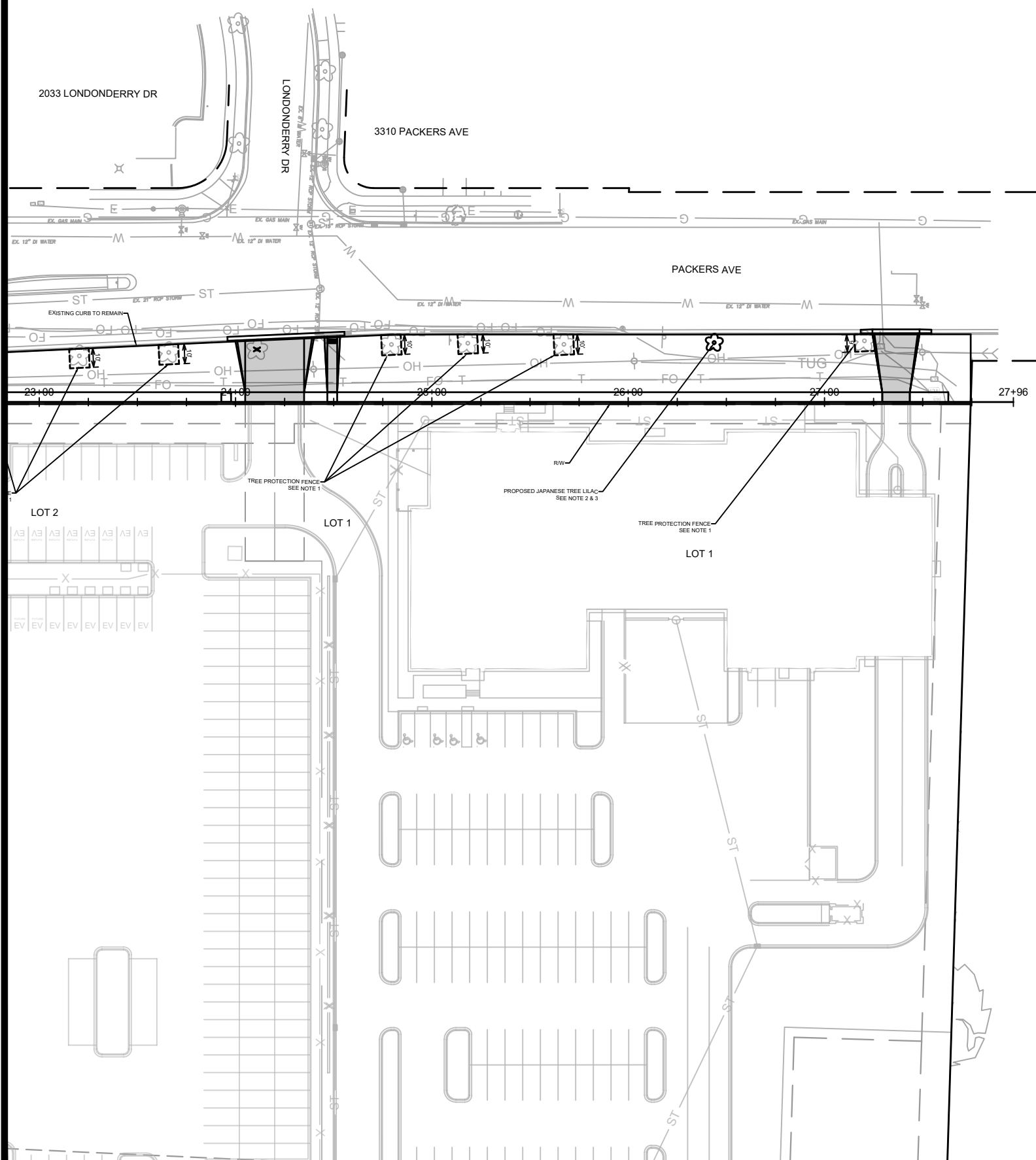
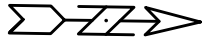
DATE	BY
REVISION	
DESIGNED BY: ###	14973
DATE: 9/01/2024 2:59 PM	
SCALE: 1" = 40'	L-2

14973
MADISON, WI
9484
CONTRACT NO:

LANDSCAPING PLAN - PACKERS AVE
2102-2202 DARWIN ROAD CSM
M:\DESIGN\Projects\14973\CAD\Streets\14973EN-Landscaping Plan.dwg



14973
L-2



- NOTES**
1. THE FENCING SHALL BE ERECTED BEFORE DEMOLITION, GRADING, OR CONSTRUCTION BEGINS. THE FENCE SHALL INCLUDE THE ENTIRE WIDTH OF TERRACE, EXCLUDING STREET TREES ALONG PACKERS AVE. IN WHICH THE DIMENSION IS IDENTIFIED ON THE PLAN, AND EXTEND AT LEAST 5 FEET ON BOTH SIDES OF THE OUTSIDE EDGE OF THE TREE TRUNK. DO NOT REMOVE THE FENCING TO ALLOW FOR DELIVERIES OR EQUIPMENT ACCESS THROUGH THE TREE PROTECTION ZONE.
 2. AT LEAST ONE WEEK PRIOR TO STREET TREE PLANTING, THE CONTRACTOR SHALL CONTACT CITY FORESTRY AT (608) 266-4816 TO SCHEDULE INSPECTION AND APPROVAL OF NURSERY TREE STOCK AND REVIEW PLANTING SPECIFICATIONS WITH THE LANDSCAPER.
 3. PROPOSED STREET TREE LOCATION SHOWN ON PLAN IS APPROXIMATE. FINAL LOCATION SHALL BE DETERMINED IN THE FIELD BY CITY FORESTRY STAFF.

MARK	REVISION	DATE	BY

14973
MADISON, WI
9484

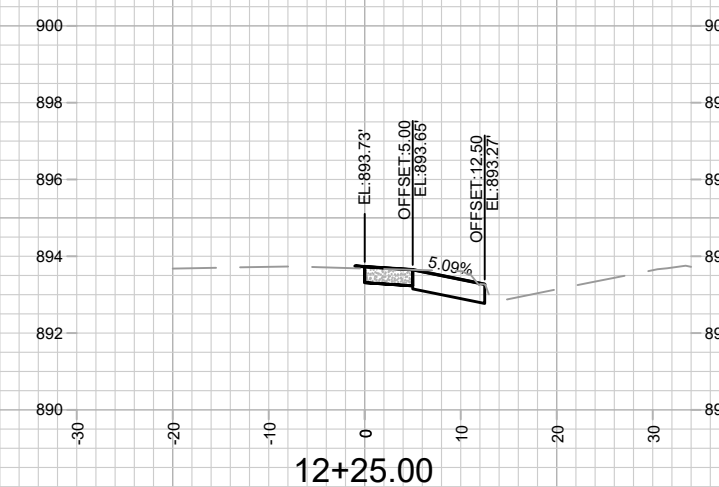
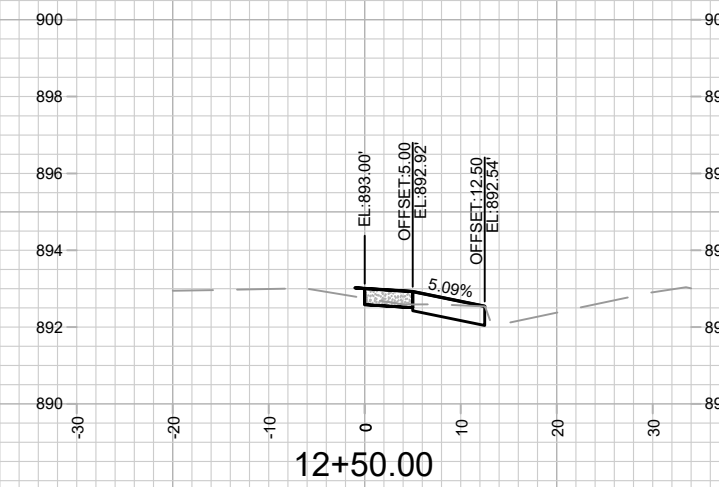
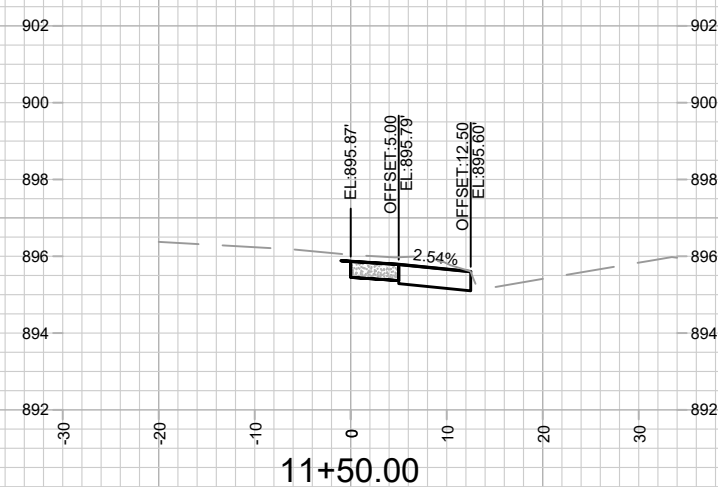
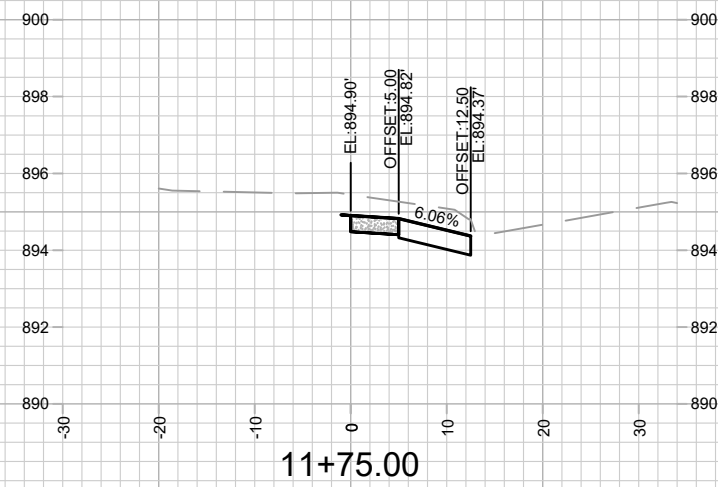
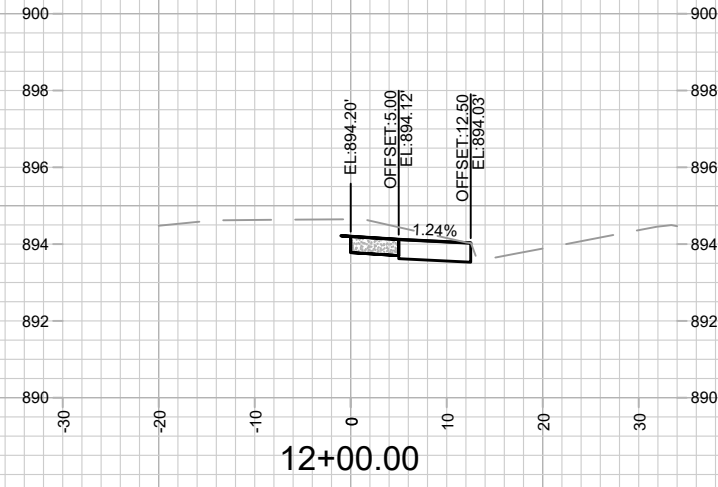
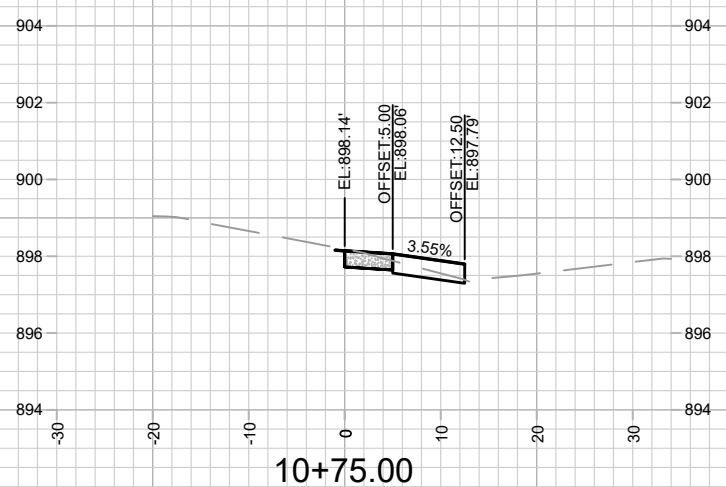
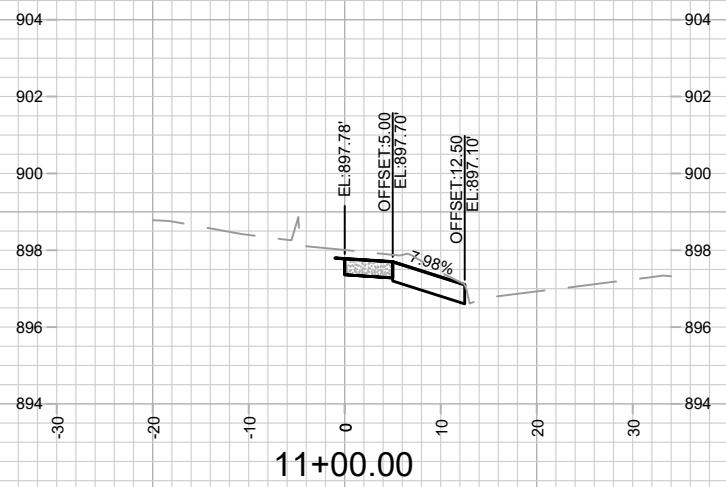
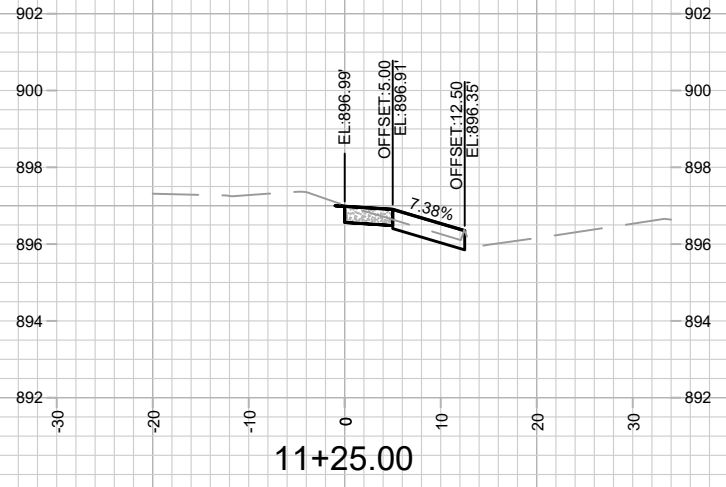
CONTRACT NO:
14973

Scale: ###
Date: 9/17/2024 2:59 PM
L-3

LANDSCAPING PLAN - PACKERS AVE
2102-2202 DARWIN ROAD CSM
M:\DESIGN\Projects\14973\CAD\Streets\14973EN-Landscaping Plan.dwg



14973
L-3

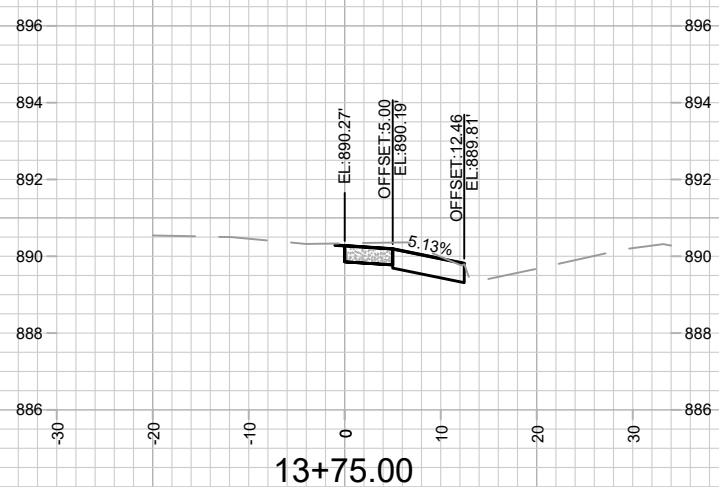
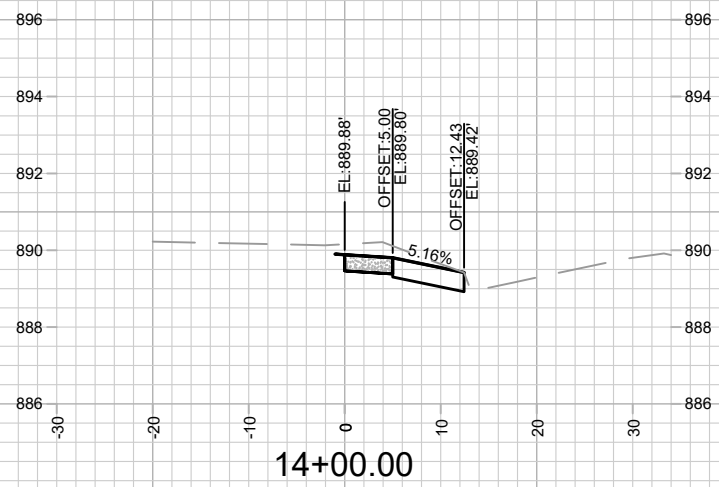
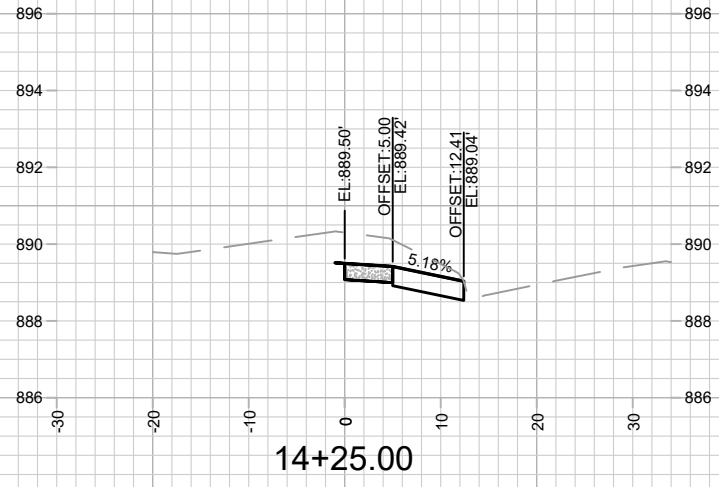
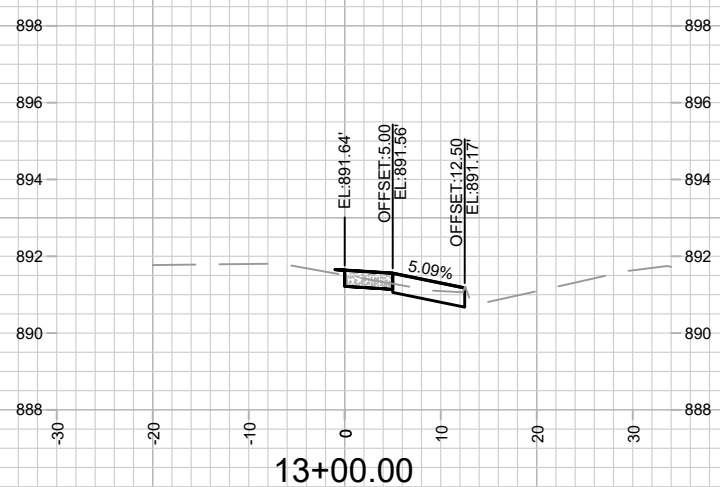
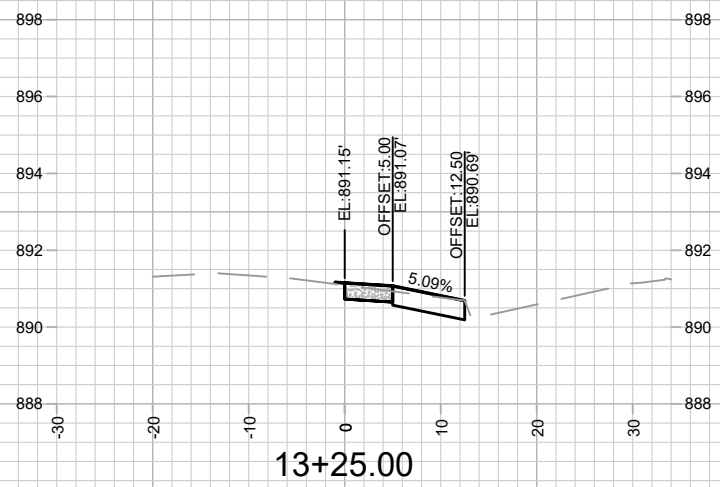
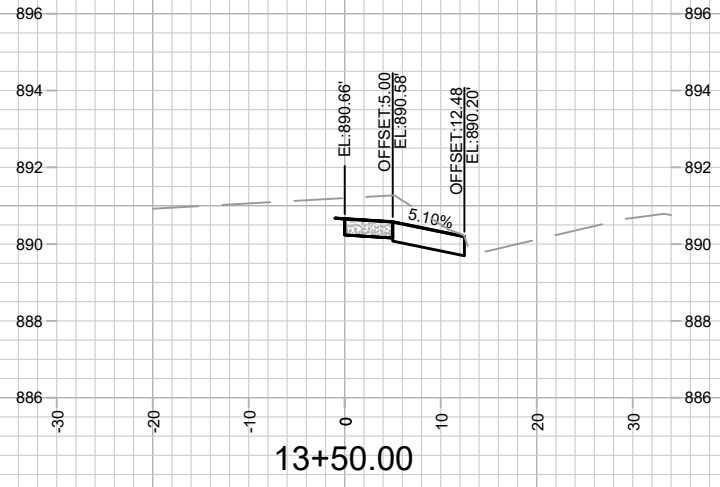


MARK	REVISION	DATE	BY

Designed By: ##
14973
Date: 9/17/2024 2:46 PM
Scale: 1" = 20'
X-1

14973
MADISON, WI
CONTRACT NO.: 9484
CROSS SECTIONS - DARWIN RD
2102-2202 DARWIN ROAD CSM
M:\DESIGN\Projects\14973\CAD\Streets\14973EN-Xsections.dwg

14973
X-1



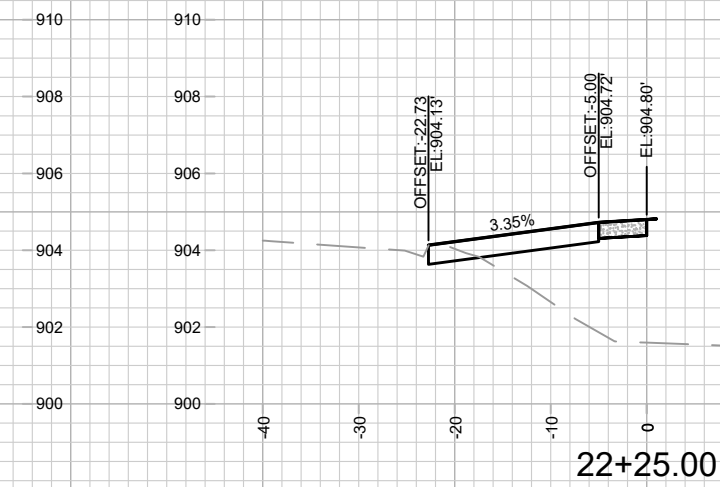
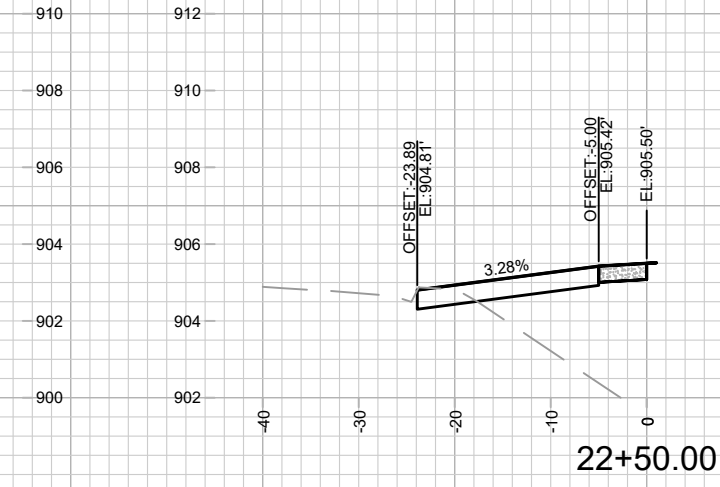
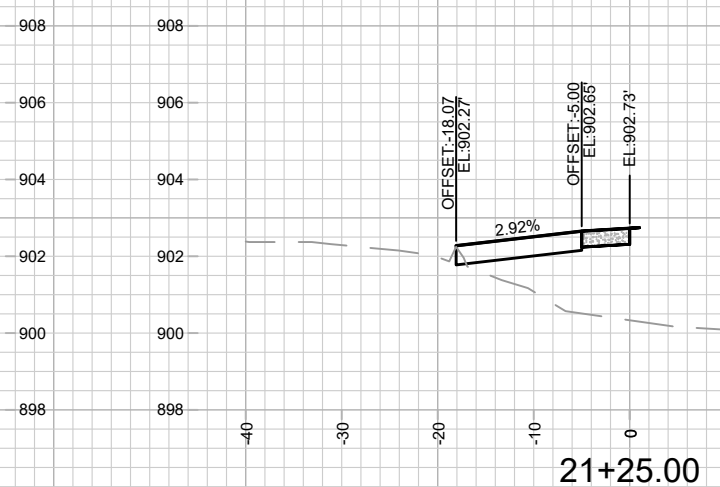
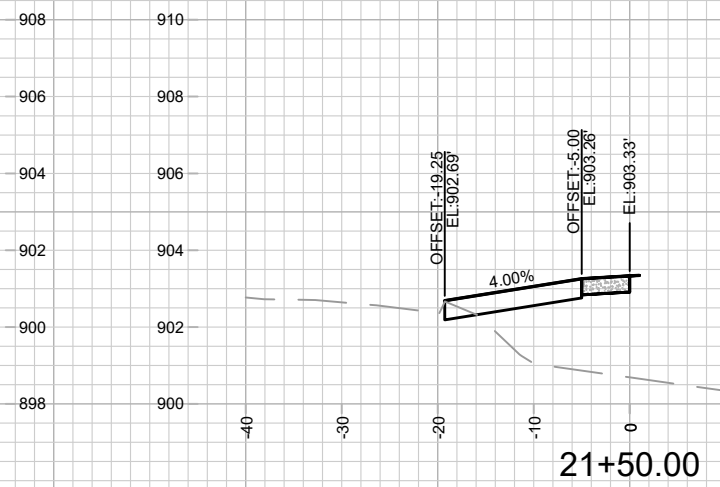
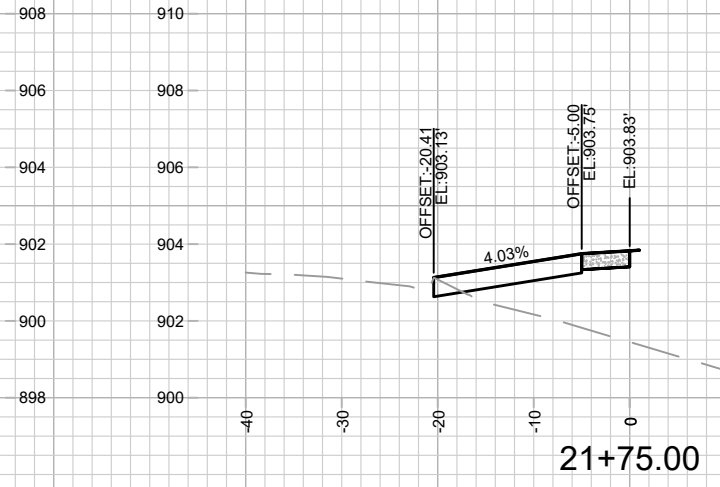
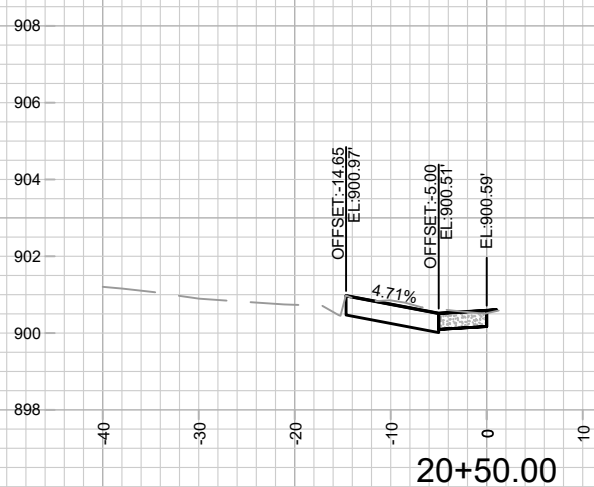
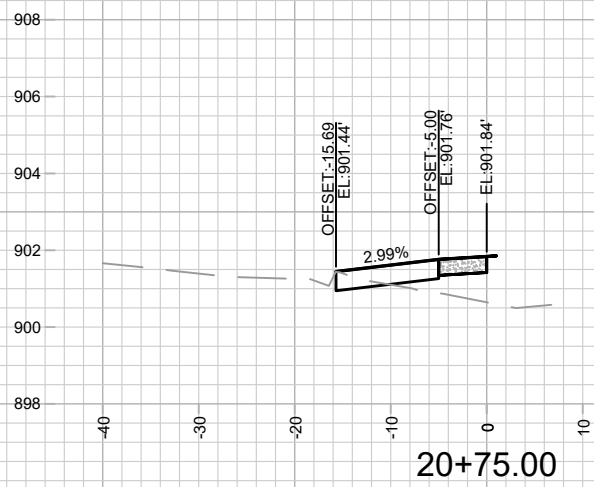
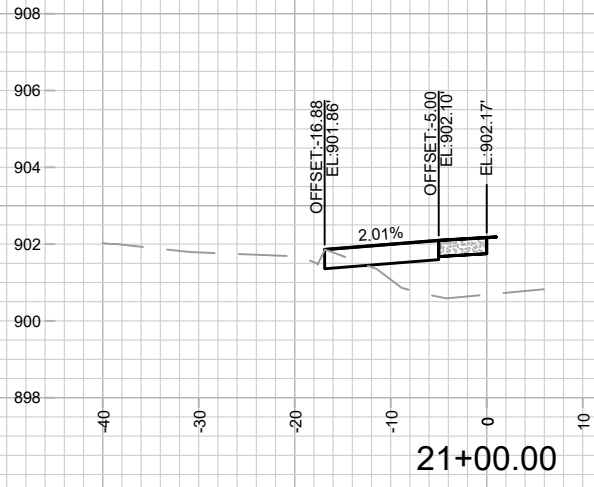
14973
 X-2

CROSS SECTIONS - DARWIN RD
 2102-2202 DARWIN ROAD CSM
 M:\DESIGN\Projects\14973\CAD\Streets\14973EN-Xsections.dwg

CONTRACT NO: 9484

14973
 MADISON, WI

MARK	REVISION	DATE	BY
14973 <td>Designed By: ### <td>Date: 9/4/2024 2:46 PM <td>Scale: 1" = 20'</td> </td></td>	Designed By: ### <td>Date: 9/4/2024 2:46 PM <td>Scale: 1" = 20'</td> </td>	Date: 9/4/2024 2:46 PM <td>Scale: 1" = 20'</td>	Scale: 1" = 20'
			X-2



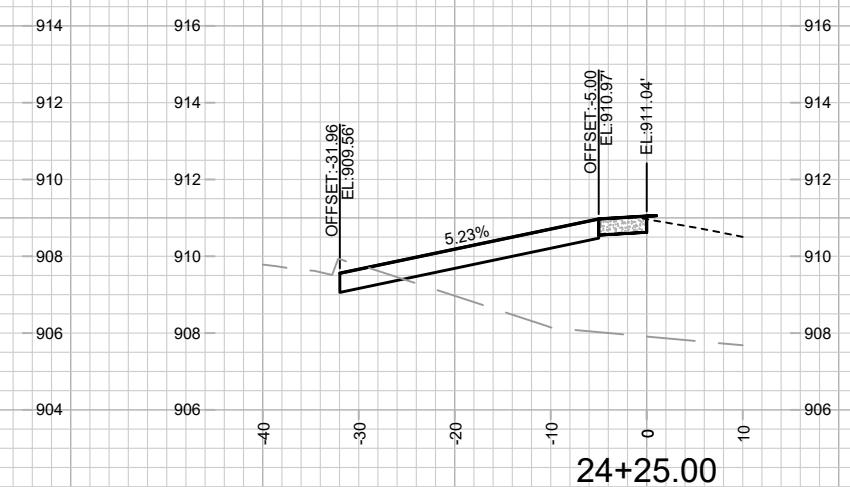
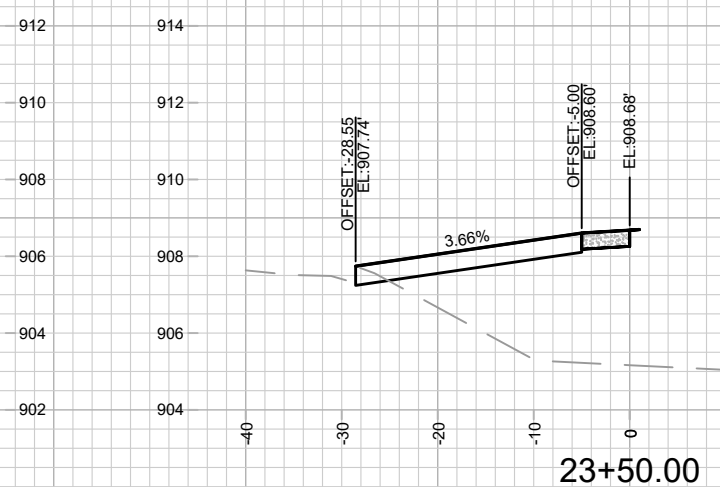
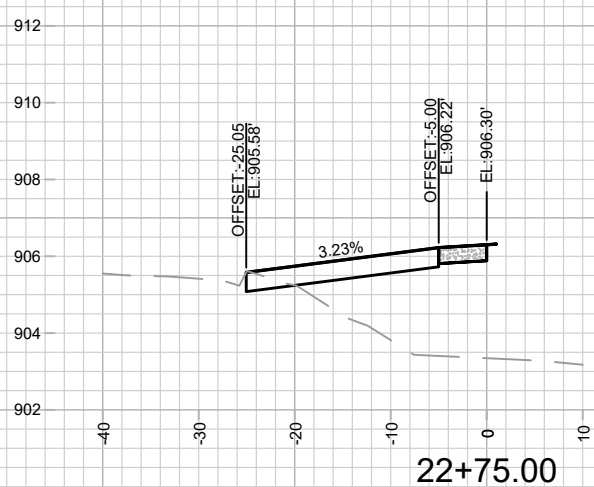
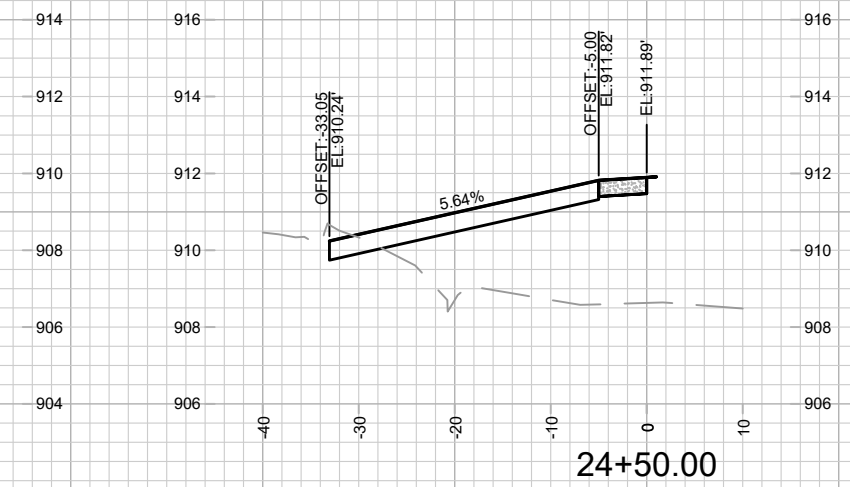
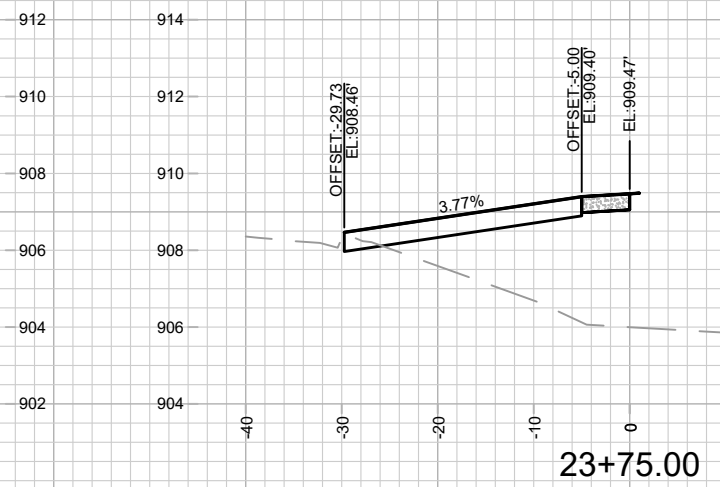
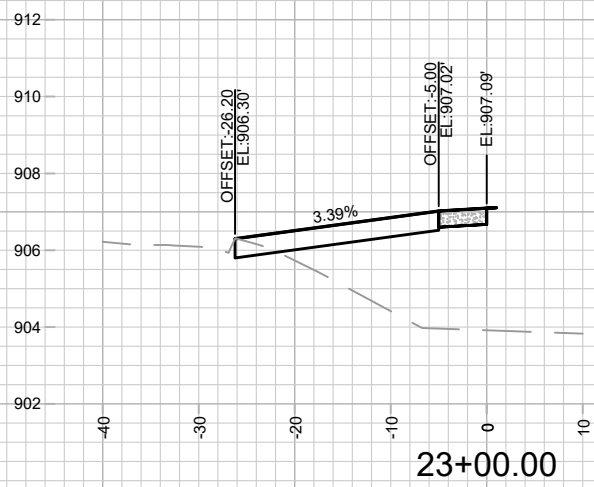
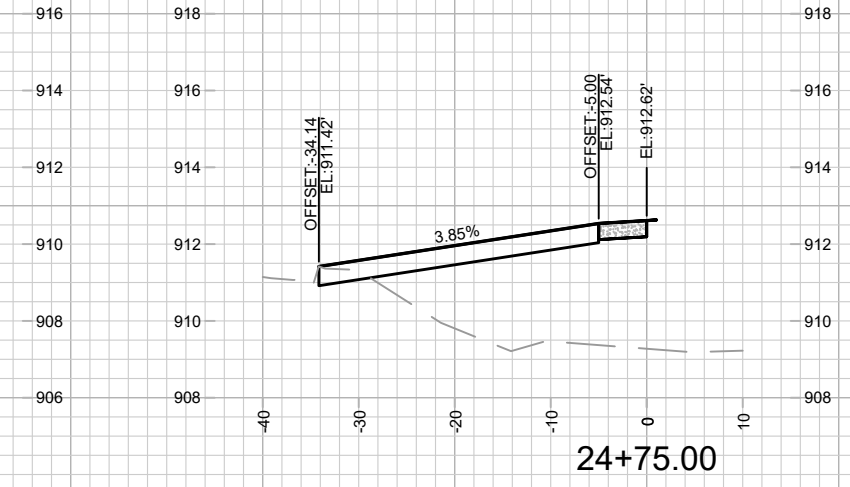
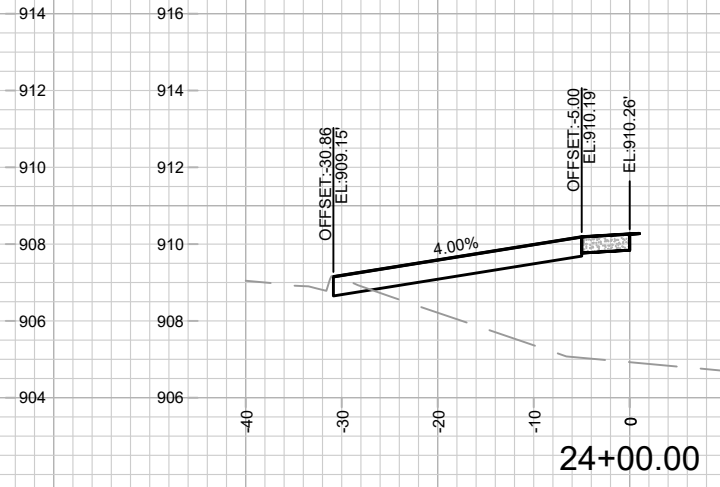
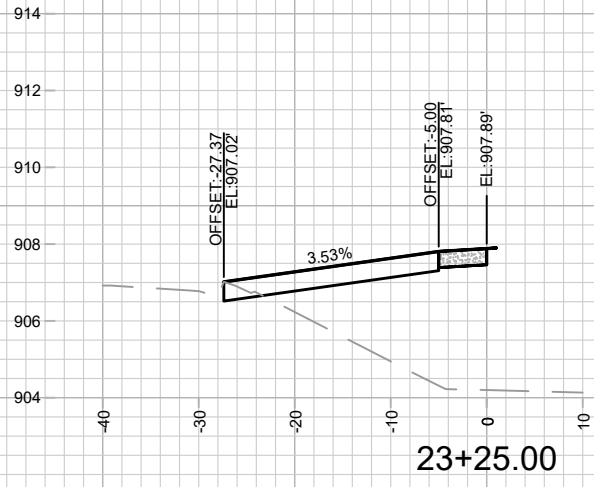
MARK	REVISION	DATE	BY
14973	14973	9/17/2024	X-3

14973
MADISON, WI
9484
CONTRACT NO:

CROSS SECTIONS - PACKERS AVE
2102-2202 DARWIN ROAD CSM
M:\DESIGN\Projects\14973\CAD\Streets\14973EN-Xsections.dwg



14973
X-3



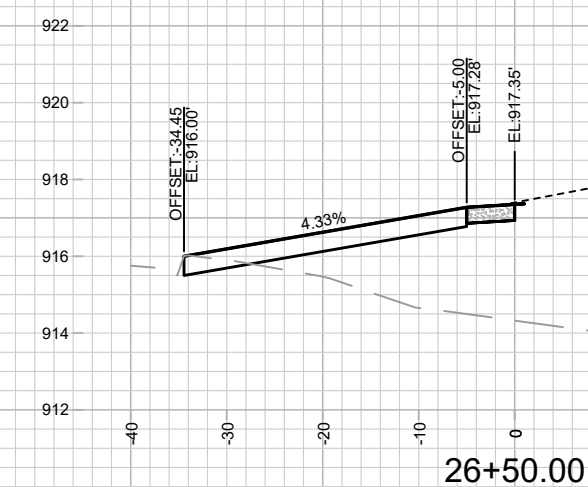
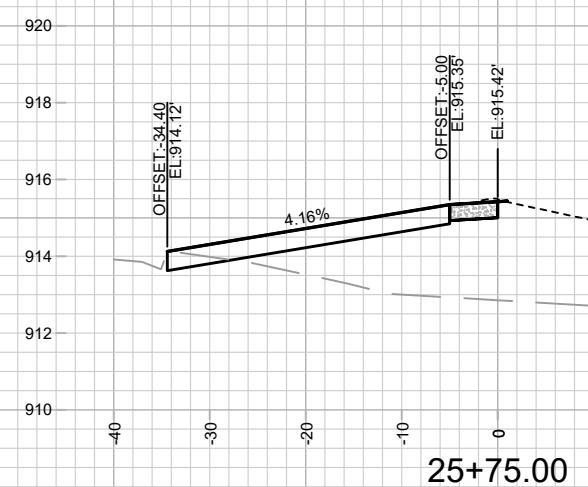
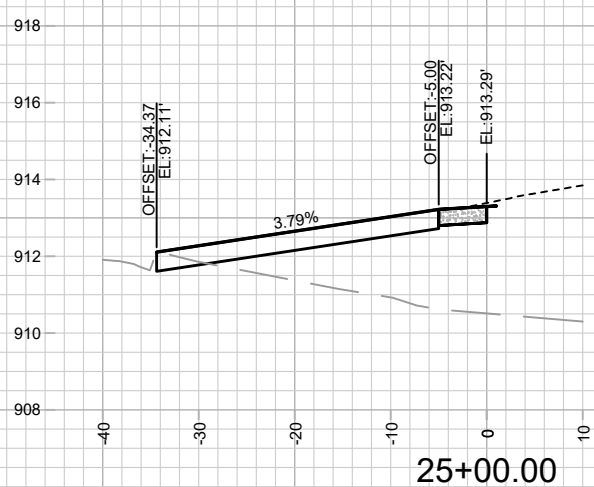
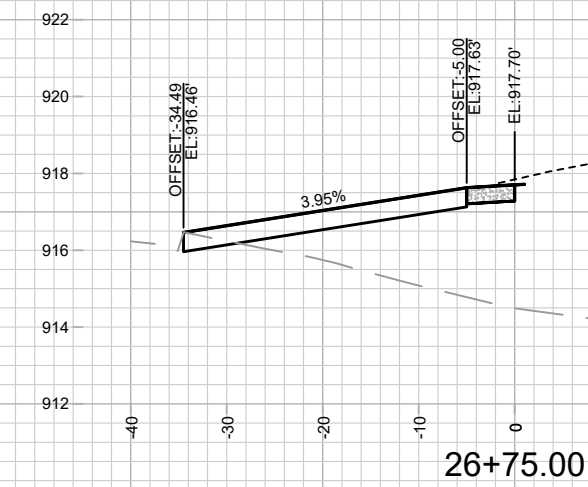
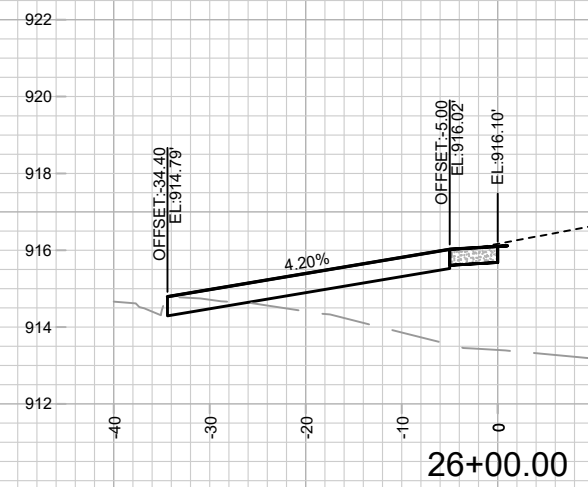
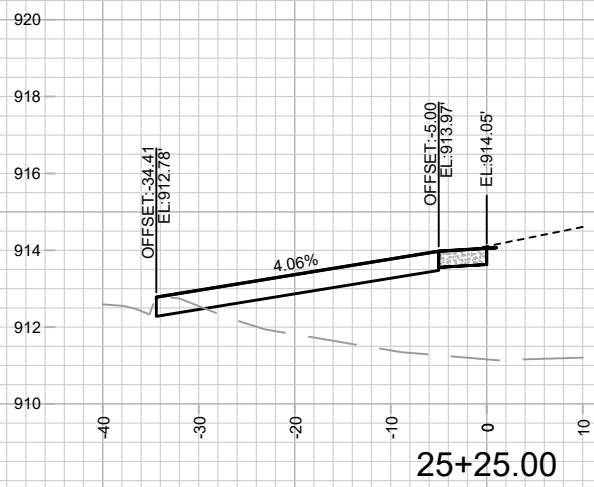
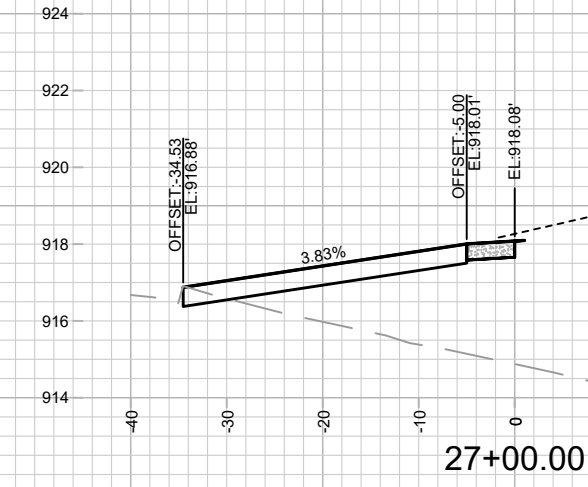
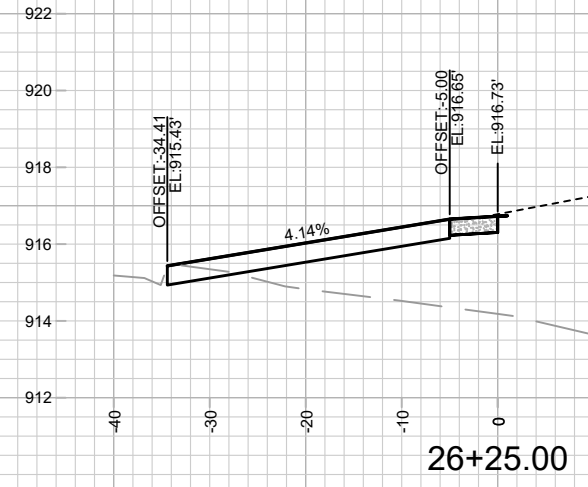
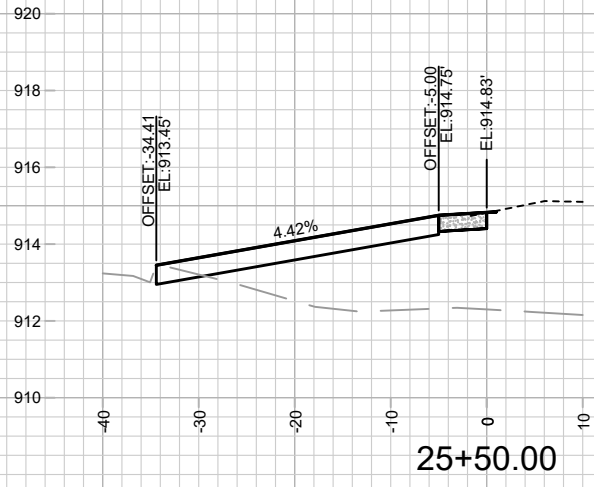
MARK	REVISION	DATE	BY
14973	14973	9/17/2024	X-4

14973
MADISON, WI
9484
CONTRACT NO:

CROSS SECTIONS - PACKERS AVE
2102-2202 DARWIN ROAD CSM
M:\DESIGN\Projects\14973\CAD\Streets\14973EN-Xsections.dwg



14973
X-4



MARK	REVISION	DATE	BY
14973	14973	9/17/2024	X-5

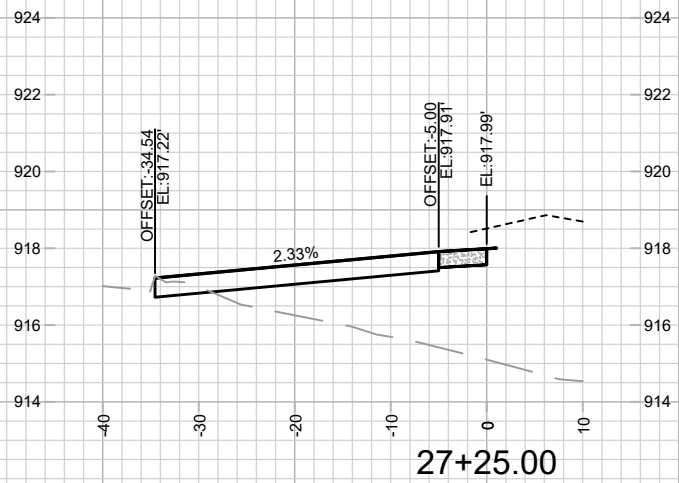
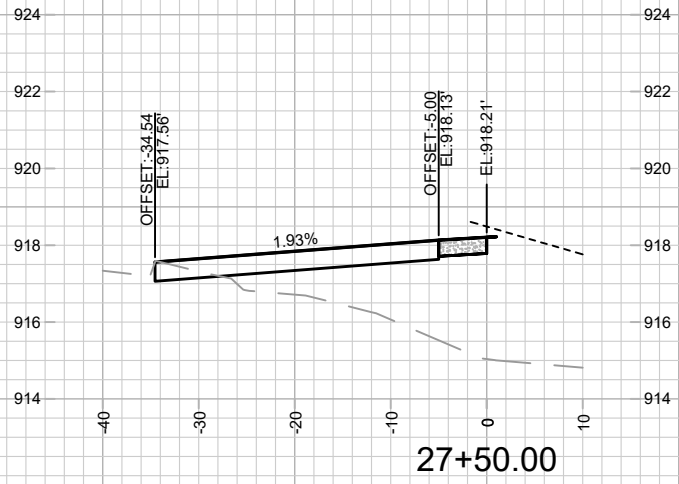
14973
MADISON, WI
9484

CONTRACT NO:

CROSS SECTIONS - PACKERS AVE
2102-2202 DARWIN ROAD CSM
M:\DESIGN\Projects\14973\CAD\Streets\14973EN-Xsections.dwg



14973
X-5



14973
X-6

CROSS SECTIONS - PACKERS AVE
2102-2202 DARWIN ROAD CSM
M:\DESIGN\Projects\14973\CAD\Streets\14973EN-Xsections.dwg

14973
MADISON, WI
CONTRACT NO: 9484

MARK	REVISION	DATE	BY
14973		Date: 9/17/2024 2:46 PM	
		Scale: 1" = 20'	X-6



MAINTENANCE LEGEND:


- = TERRACE REQUIRE MOWING BY CITY
- = SIDEWALK AND BIKE PATHS REQUIRE SNOW REMOVAL BY CITY
- = BUS STOP PAD REQUIRES SNOW REMOVAL BY CITY
- = CROSSWALK OR CONCRETE WATERWAY REQUIRE SNOW REMOVAL BY CITY
- = PRIVATELY MAINTAINED (MEDIANS, ISLAND, ROUNDABOUTS & PRIVATE OUTLOTS)
- = PUBLIC CITY ENGINEERING STORMWATER PROPERTY
- = PUBLIC CITY PARK PROPERTY
- = PRIVATE OUTLOT
- = PHASE BOUNDARY

SPECIAL FEATURES LEGEND:

- = SUSPENDED PAVEMENT SYSTEM
- = STORM WATER FEATURE
- = UNDERDRAIN

NOT FOR CONSTRUCTION - CITY RECORDS ONLY



	14973 MN-1	MAINTENANCE PLAN 2102-2202 DARWIN ROAD CSM	14973 MADISON, WI 9484 CONTRACT NO:
M:\DESIGN\Projects\14973\CAD\Streets\14973EN-Maintenance.dwg			
MARK: _____ Design: By: 14973	REVISION: _____ Date: 8/23/2024 12:12 PM	SCALE: _____ Scale: #####	BY: _____ DATE: _____ MN-1