

Madison, Wisconsin

CITY OF MADISON

CITY ENGINEERING DIVISION

DEPARTMENT OF PUBLIC WORKS

PLAN OF PROPOSED IMPROVEMENT

INDEX OF SHEETS

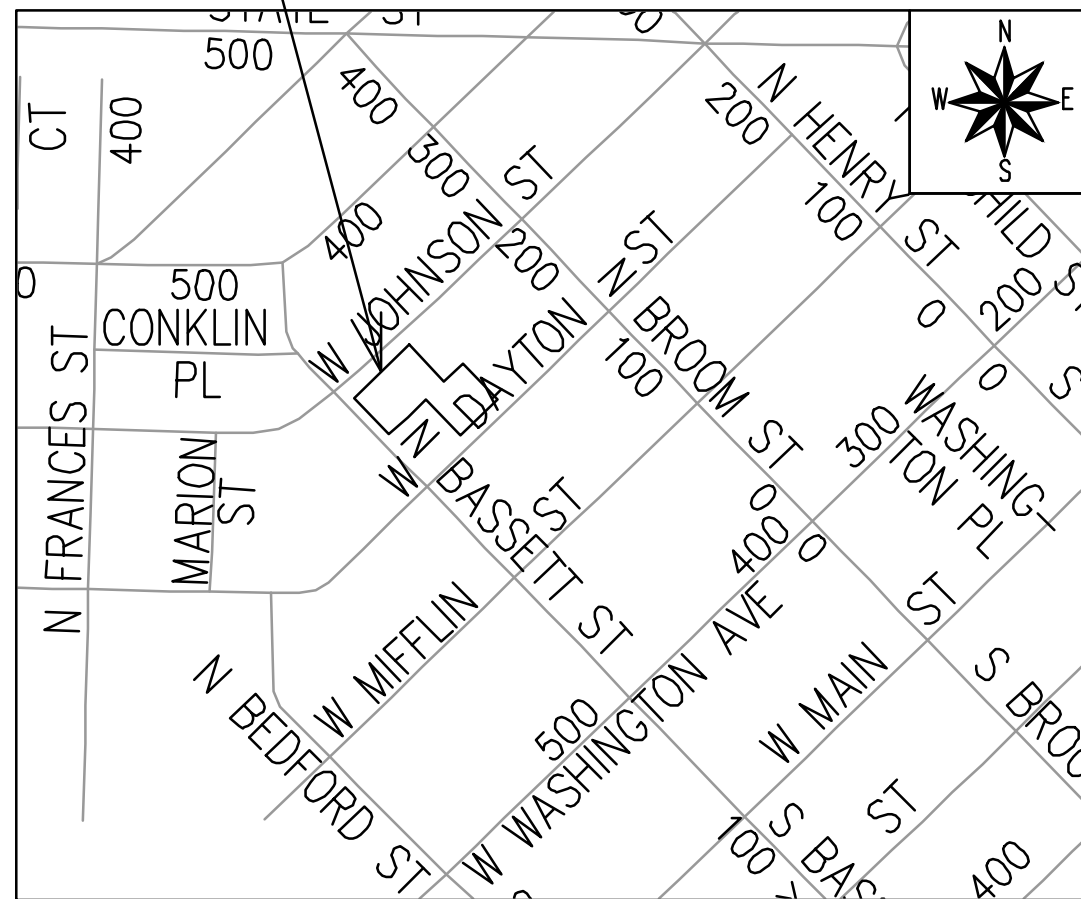
SHEET NO. D1	STANDARD NOTES
SHEET NO. D2-D3	TYPICAL SECTIONS
SHEET NO. D4	TERRACE EXCAVATION DETAIL
SHEET NO. P1-P3	PLAN & PROFILES
SHEET NO. U1-U3	UTILITY PLAN
SHEET NO. PM1	MARKING PLAN
SHEET NO. L1-L3	LANDSCAPING PLAN
SHEET NO. X1-X3	CROSS SECTIONS
SHEET NO. MN1	MAINTENANCE PLAN (CITY USE ONLY)

449 W JOHNSON ST

CITY PROJECT NO. 15030

CONTRACT NO. 9499

PROJECT LOCATION



PUBLIC IMPROVEMENT PROJECT APPROVED

MARCH 19, 2024

BY THE COMMON COUNCIL OF MADISON, WISCONSIN

PUBLIC IMPROVEMENT DESIGN APPROVED BY:

Chris Potykowski Oct 10, 2024

City Engineer Date

STREET DESIGNED BY:

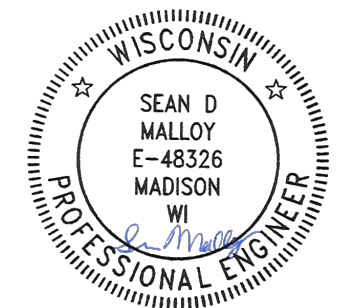


Oct 9, 2024

WATER DESIGNED BY:

LATERAL ONLY

PAVEMENT MARKINGS DESIGNED BY:



Oct 9, 2024

SANITARY SEWER DESIGNED BY:

LATERAL ONLY

STORM SEWER DESIGNED BY:

LATERAL ONLY

PLOT SCALE: 1 IN = 11.1 XREF

PLOT NAME: ---

REV. DATE: 8/15/2024 7:50 AM

ORIGINATOR: CITY_OF_MADISON

THE LOCATION AND INFORMATION FOR PROPOSED NEW TREES, IN THE PUBLIC RIGHT OF WAY OR ON PUBLIC LANDS ARE APPROXIMATE AND ARE SHOWN FOR REFERENCE ONLY. THE LOCATIONS, SPECIFICATIONS AND PLANTING METHODS OF ALL PROPOSED NEW OR REPLACEMENT TREES IN THE PUBLIC RIGHT OF WAY OR ON PUBLIC LANDS SHALL BE APPROVED BY THE CITY FORESTER PRIOR TO INSTALLATION.

NO TREES IN THE RIGHT OF WAY OR ON PUBLIC LANDS SHALL BE TRIMMED, PRUNED, REMOVED OR ADVERSELY AFFECTED IN ANY WAY UNTIL THE DEVELOPER HAS RECEIVED WRITTEN PERMISSION FROM THE CITY ENGINEER OR CITY FORESTER. SAID WRITTEN PERMISSION SHALL INCLUDE LANGUAGE INDICATING THAT SECTION 10.101 OF THE MADISON GENERAL ORDINANCES AND ADMINISTRATIVE PROCEDURE MEMORANDUM NO. 6-2, REFERRING TO NOTIFICATION OF PROPERTY OCCUPANTS AND/OR OWNERS, HAS BEEN COMPLIED WITH.

DEVELOPER MUST SUBMIT A TRAFFIC CONTROL PLAN TO CITY TRAFFIC ENGINEERING AT LEAST 14 DAYS PRIOR TO THE START OF WORK. WORK SHALL NOT PROCEED UNTIL AN APPROVED TRAFFIC CONTROL PLAN IS IN PLACE.

CONTACT THE PROJECT ENGINEER AND DESIGNER, GRECIA IZQUIERDO, AT GIZQUIERDO@CITYOFMADISON.COM FOR CAD FILES AND ALIGNMENT DATA PRIOR TO STAKING.

UNDERDRAINS SHALL BE INSTALLED PER STANDARD DETAIL DRAWING 4.05 FOR 75' ON EACH SIDE OF THE LOW POINT, OR TO THE NEAREST CURB HIGH POINT. ALL UNDERDRAIN SHALL BE WRAPPED.

ALL GUTTERS SHALL DRAIN WITH A MINIMUM GRADE OF 0.5% TOWARD STORM SEWER INLETS.

ALL DITCHES SHALL DRAIN WITH A MINIMUM GRADE OF 0.5%

THE CROSS SLOPE OF SIDEWALKS AND BARRIER FREE SIDEWALK CURB RAMPS SHALL TYPICALLY BE 1.5%. THE LONGITUDINAL GRADE OF BARRIER FREE SIDEWALK CURB RAMPS SHALL NOT EXCEED 8.33%. ALL SIDEWALK RAMPS SHALL BE CONSTRUCTED ACCORDING TO S.D.D. 3.04. AT ALL OTHER LOCATIONS THE LONGITUDINAL GRADE OF SIDEWALKS SHALL NOT EXCEED 5.0 % OR THE ADJACENT STREET GRADE WHICHEVER IS GREATER NOR BE LESS THAN 0.5% AND SHALL DRAIN TOWARD STORM SEWER INLETS. SIDE SLOPES WITHIN TEN FEET OF A PUBLIC SIDEWALK SHALL NOT EXCEED 4:1. ALL SIDEWALK AND SIDEWALK RAMP ELEVATIONS AND GRADES SHALL BE FIELD VERIFIED AND SET TO COMPLY WITH THE CITY OF MADISON STANDARD SPECIFICATIONS AND THE A.D.A. GUIDELINES.

OBTAIN A PRINT OUT OF THE ALIGNMENTS FROM THE CITY PROJECT ENGINEER PRIOR TO STAKING THIS PROJECT. THE CITY PROJECT ENGINEER IS GRECIA IZQUIERDO, EMAIL: GIZQUIERDO@CITYOFMADISON.COM

CURB STATION AND OFFSETS SHALL BE TO THE EDGE OF PAVEMENT UNLESS OTHERWISE INDICATED. CURB ELEVATIONS SHALL BE TO THE EDGE OF PAVEMENT UNLESS OTHERWISE INDICATED.

POWER POLES AND OTHER OBSTRUCTIONS SHALL BE MOVED TO PROVIDE 2 FEET MINIMUM OF CLEAR DISTANCE FROM ANY FACE OF CURB OR EDGE OF SIDEWALK UNLESS OTHERWISE INDICATED ON THE PLANS.

ANY INFORMATION SHOWN ON THIS PLAN, WHICH IS NOT PART OF THIS RIGHT-OF-WAY PROJECT, IS PRELIMINARY AND NOT FOR CONSTRUCTION.

THERE MAY BE EXISTING UTILITIES OR OTHER FEATURES WHICH ARE EITHER NOT SHOWN OR SHOWN INCORRECTLY ON THIS PLAN. IT IS THE RESPONSIBILITY OF THE DEVELOPER TO LOCATE AND IDENTIFY ALL UTILITIES AND TOPOGRAPHY WHICH MAY AFFECT THE CONSTRUCTION OF THESE IMPROVEMENTS.

ALL PERMANENT SIGNING AND POSTING WILL BE DETERMINED AND PROVIDED BY THE TRAFFIC ENGINEERING DIVISION, FOLLOWING CONSTRUCTION OF THESE IMPROVEMENTS.

THE DEVELOPER SHALL PROVIDE, INSTALL AND MAINTAIN ALL STREET END BARRICADES, SIGNING AND TRAFFIC CONTROL, AS REQUIRED BY THE CITY TRAFFIC ENGINEER.

PAVEMENT SAWCUTS SHALL BE AS DIRECTED BY THE CITY CONSTRUCTION ENGINEER. SAWCUTS SHOWN ON THE PLAN ARE APPROXIMATE.

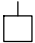
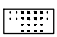

CURB ON CUL DE SACS SHALL BE INSTALLED ACCORDING TO S.D.D 3.05.

ALL WORK IN THE RIGHT OF WAY AND PUBLIC EASEMENTS SHALL BE IN ACCORDANCE WITH THE CITY OF MADISON STANDARD SPECIFICATIONS FOR PUBLIC WORKS CONSTRUCTION LATEST EDITION.

ALL PROPOSED IMPROVEMENTS IN THE RIGHT-OF-WAY ARE BASED ON SURVEY DATA PROVIDED BY THE DEVELOPER OR ITS CONSULTANT. IN THE CASE THAT THE PROPOSED IMPROVEMENTS CAN NOT BE INSTALLED PER THESE PLANS OR THE CITY OF MADISON STANDARD SPECIFICATION FOR PUBLIC WORKS CONSTRUCTION, LATEST EDITION, THE DEVELOPER SHALL BE RESPONSIBLE FOR THE COST OF EXTRA WORK DUE TO INACCURACIES OF THE SURVEY.

ALL UTILITY VERIFICATIONS AND ACCURACY OF THE DRAWINGS ARE THE RESPONSIBILITY OF THE DEVELOPER. ANY CONFLICTS THAT ARISE FROM MISSING OR ERRONEOUS INFORMATION WILL BE AT THE EXPENSE OF THE DEVELOPER. NO PRECAST STRUCTURES WILL BE APPROVED FOR STORM OR SANITARY SEWER UNTIL ALL POTENTIAL UTILITY CONFLICTS ARE RESOLVED.

IN LOCATIONS WHERE PAVEMENT RESTORATION IS NOT IDENTIFIED ADJACENT TO CURB AND GUTTER REPLACEMENT, IT IS ASSUMED THAT CURB AND GUTTER WILL BE REPLACED WITHOUT DAMAGING ADJACENT PAVEMENT. IF DAMAGED, THE PAVEMENT RESTORATION LIMITS SHALL BE EXTENDED BY THE CITY CONSTRUCTION ENGINEER AS NECESSARY TO MEET THE STANDARD PATCHING CRITERIA.

CONVENTIONAL SIGNS	
<i>FIELD VERIFY ALL UTILITY LOCATIONS</i>	
<i>GAS</i>	—— G ——
<i>STORM SEWER</i>	—— ST ——
<i>SANITARY SEWER</i>	—— SAN ——
<i>WATER</i>	—— W ——
<i>BURIED ELECTRIC</i>	—— E ——
<i>OVERHEAD ELECTRIC</i>	—— OH ——
<i>POWER POLE</i>	
<i>ADA COMPLIANT RAMP W/ DETECTABLE WARNING FIELD</i>	
<i>COMBUSTIBLE FLUIDS</i>	

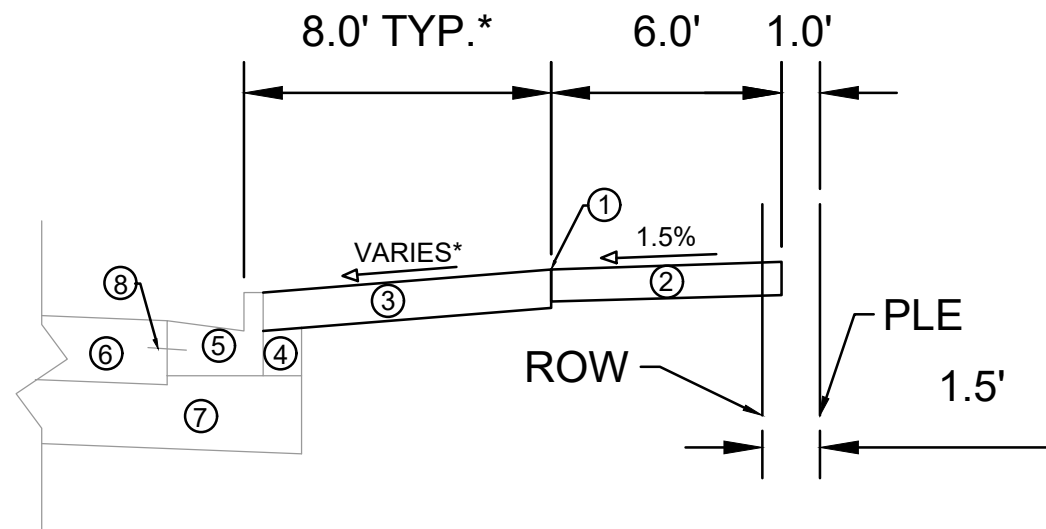
DATE	BY
10/24/24	
REVISION	
DATE	BY
10/24/24 3:22 PM	
MARK	
15030	

15030
MADISON, WI
9499
CONTRACT NO:

STANDARD NOTES
449 W JOHNSON ST
M:\DESIGN\Projects\15030\CAD\Streets\15030EN-Details.dwg



15030
D-1

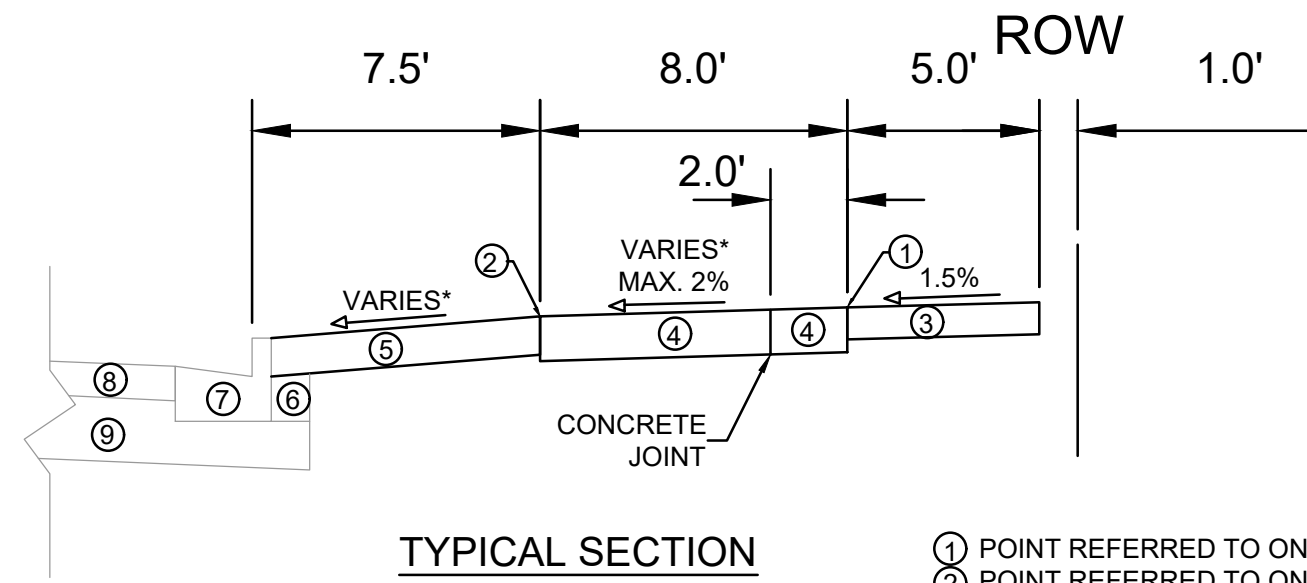


**TYPICAL SECTION
W JOHNSON ST**

- ① POINT REFERRED TO ON PROFILE
- ② 5" CONCRETE SIDEWALK
- ③ 6" TOPSOIL, SEED AND MAT
- ④ EXISTING FILL TO REMAIN, INSTALL AT CURB REPLACEMENT LOCATIONS
- ⑤ EXISTING CURB TYPE A, REPLACE AT LOCATIONS SHOWN IN P SHEETS OR AS DETERMINED BY THE CONSTRUCTION ENGINEER**
- ⑥ EXISTING CONCRETE PAVEMENT TO REMAIN
- ⑦ EXISTING ROAD BASE TO REMAIN
- ⑧ EXISTING TIE BAR

SPECIAL NOTES:

- * SEE X-SHEETS AND P-SHEETS FOR CROSS SECTIONS AND SLOPES
- ** ANY CURB REPLACEMENT SHALL INCLUDE TIE BARS INTO THE ADJACENT CONCRETE PAVEMENT IN ACCORDANCE WITH THE CITY OF MADISON S.D.D. 3.10



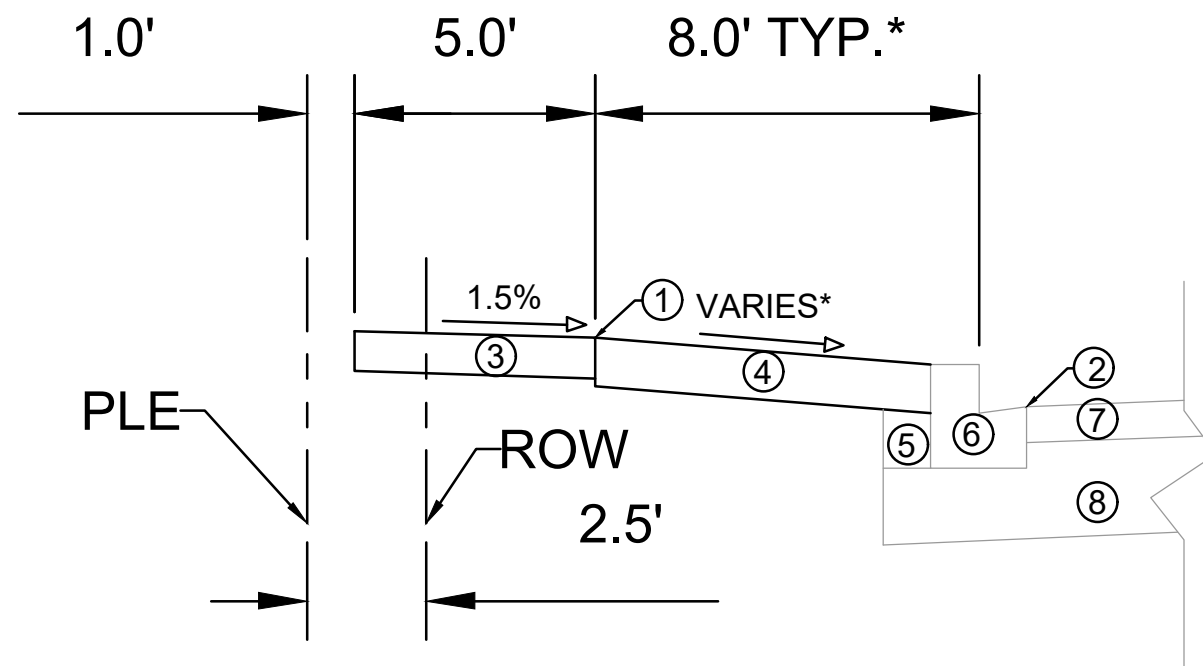
**TYPICAL SECTION
N BASSETT ST**

- ① POINT REFERRED TO ON FRONT OF WALK PROFILE
- ② POINT REFERRED TO ON FRONT OF BIKE LANE PROFILE
- ③ 5" CONCRETE SIDEWALK
- ④ 7" COLORED CONCRETE BIKE LANE. COLOR SHALL BE 'BASE MIDNIGHT' MC7001 OR APPROVED EQUAL**
- ⑤ 6" TOPSOIL, SEED AND MAT.
- ⑥ EXISTING FILL TO REMAIN, INSTALL AT CURB REPLACEMENT LOCATIONS
- ⑦ EXISTING CONCRETE CURB TYPE A, REPLACE AT LOCATIONS SHOWN IN P SHEETS OR AS DETERMINED BY THE CONSTRUCTION ENGINEER
- ⑧ EXISTING ASPHALTIC PAVEMENT TO REMAIN
- ⑨ EXISTING ROAD BASE TO REMAIN

SPECIAL NOTES:

- * SEE X-SHEETS AND P-SHEETS FOR CROSS SECTIONS AND SLOPES
- ** TRANSVERSE JOINTS FOR BUFFER BETWEEN PATH AND SIDEWALK SHALL BE PLACED AT APPROXIMATELY 2FT. INSTALL 1/8" THICK FELT BOND BREAKER ON EITHER SIDE OF THE BUFFER.

15030	MADISON, WI	9499	CONTRACT NO:	D-2
M:\DESIGN\Projects\15030\CAD\Streets\15030EN-Details.dwg				
TYPICAL SECTIONS	449 W JOHNSON ST			
15030				
D-2				



TYPICAL SECTION
W DAYTON ST

SPECIAL NOTES:

*SEE X-SHEETS AND P-SHEETS FOR CROSS SECTIONS AND SLOPES

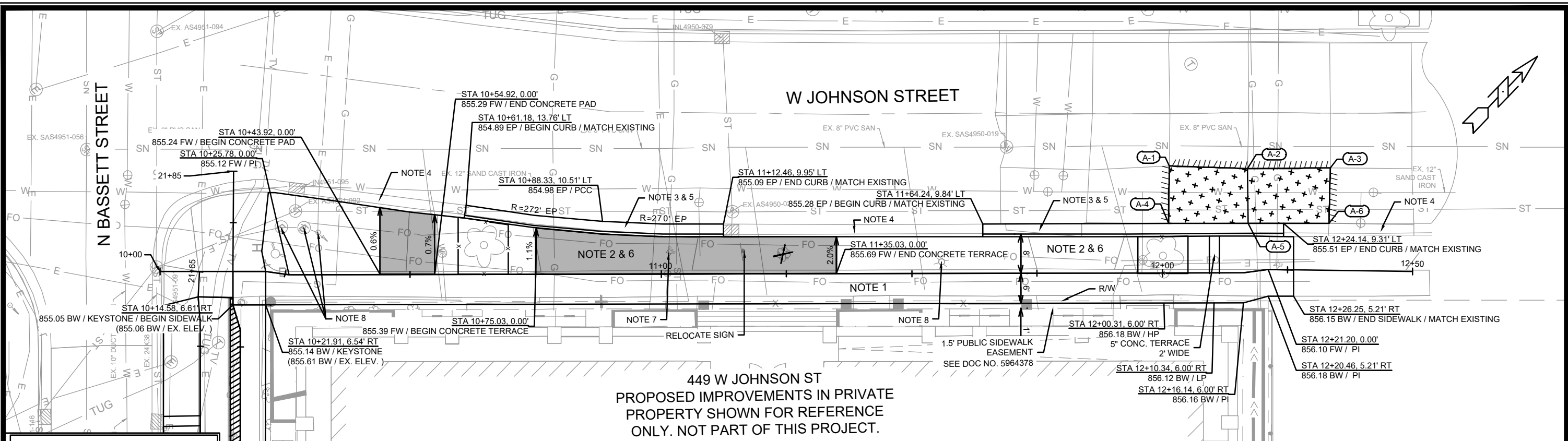
- ① POINT REFERRED TO ON FRONT OF WALK PROFILE
- ② POINT REFERRED TO ON EDGE OF PAVEMENT PROFILE
- ③ 5" CONCRETE SIDEWALK
- ④ 6" TOPSOIL, SEED AND MAT.
- ⑤ EXISTING FILL TO REMAIN, INSTALL AT CURB REPLACEMENT LOCATIONS
- ⑥ EXISTING CONCRETE CURB TYPE H, REPLACE AT LOCATIONS SHOWN IN P SHEETS OR AS DETERMINED BY THE CONSTRUCTION ENGINEER
- ⑦ EXISTING ASPHALTIC PAVEMENT TO REMAIN
- ⑧ EXISTING ROAD BASE TO REMAIN

MARK	REVISION	DATE	BY
15030	10/28/2024 3:22 PM		

15030
MADISON, WI
9499
CONTRACT NO:

TYPICAL SECTIONS
449 W JOHNSON ST
M:\DESIGN\Projects\15030\CAD\Streets\15030EN-Details.dwg





449 W JOHNSON ST
 PROPOSED IMPROVEMENTS IN PRIVATE
 PROPERTY SHOWN FOR REFERENCE
 ONLY. NOT PART OF THIS PROJECT.

POINT	STATION AND OFFSET	ELEVATION
A-1	12+01.42, -21.39LT	855.75*
A-2	12+19.88, -20.54LT	855.53*
A-3	12+33.28, -20.46LT	855.87*
A-4	12+01.23, -9.95LT	855.40*
A-5	12+18.55, -9.68LT	855.52*
A-6	12+33.15, -9.40LT	855.56*

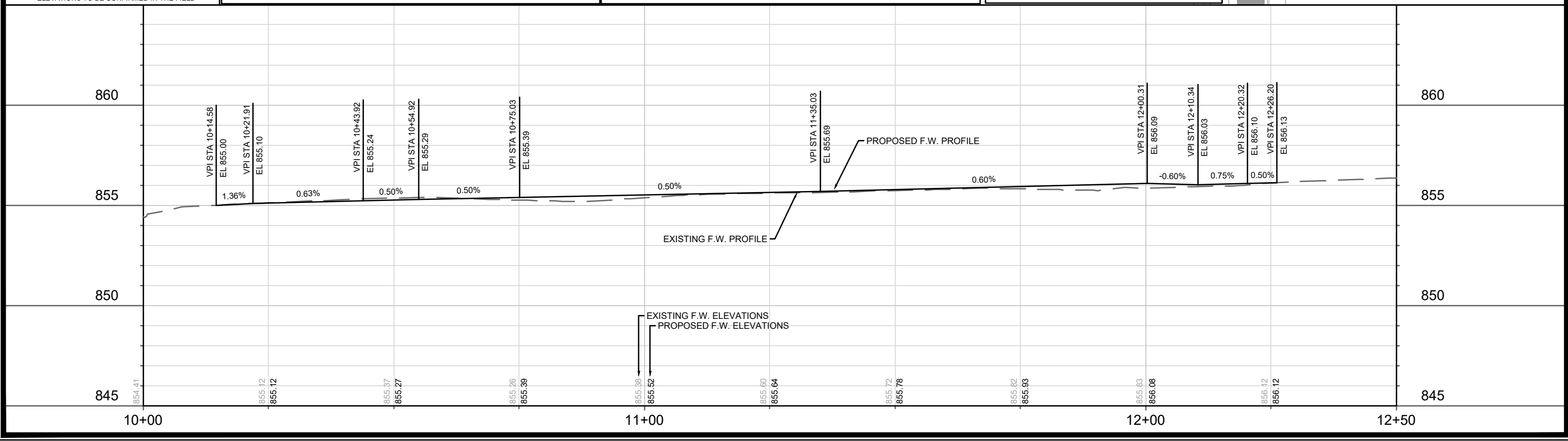
* ELEVATIONS TO BE CONFIRMED IN THE FIELD

- NOTES:
- 5" CONCRETE SIDEWALK
 - REMOVE CONCRETE
 - REMOVE AND REPLACE CONCRETE CURB AND GUTTER TYPE 'A'. LIMITS SHALL BE DETERMINED ON-SITE BY CONSTRUCTION ENGINEER.
 - EXISTING CURB AND GUTTER TYPE 'A' TO REMAIN
 - IN LOCATIONS WHERE PAVEMENT RESTORATION IS NOT IDENTIFIED ADJACENT TO CURB AND GUTTER REPLACEMENT ITS ASSUMED THAT CURB AND GUTTER WILL BE REPLACED WITHOUT DAMAGING ADJACENT PAVEMENT. IF DAMAGED, PAVEMENT RESTORATION LIMITS SHALL BE EXTENDED BY THE CITY CONSTRUCTION ENGINEER AS NECESSARY TO MEET THE STANDARD PATCHING CRITERIA.
 - SEE COMMERCIAL DRIVEWAY PERMIT LNDUSE-2023-00015
 M:\DESIGN\Traffic\Maps_Plans\ParkingLotPlans\TE\Johnson St W 437 to 449
 - DEVELOPER SHALL COORDINATE RELOCATION OR ADJUSTMENT OF PRIVATE UTILITY INFRASTRUCTURE

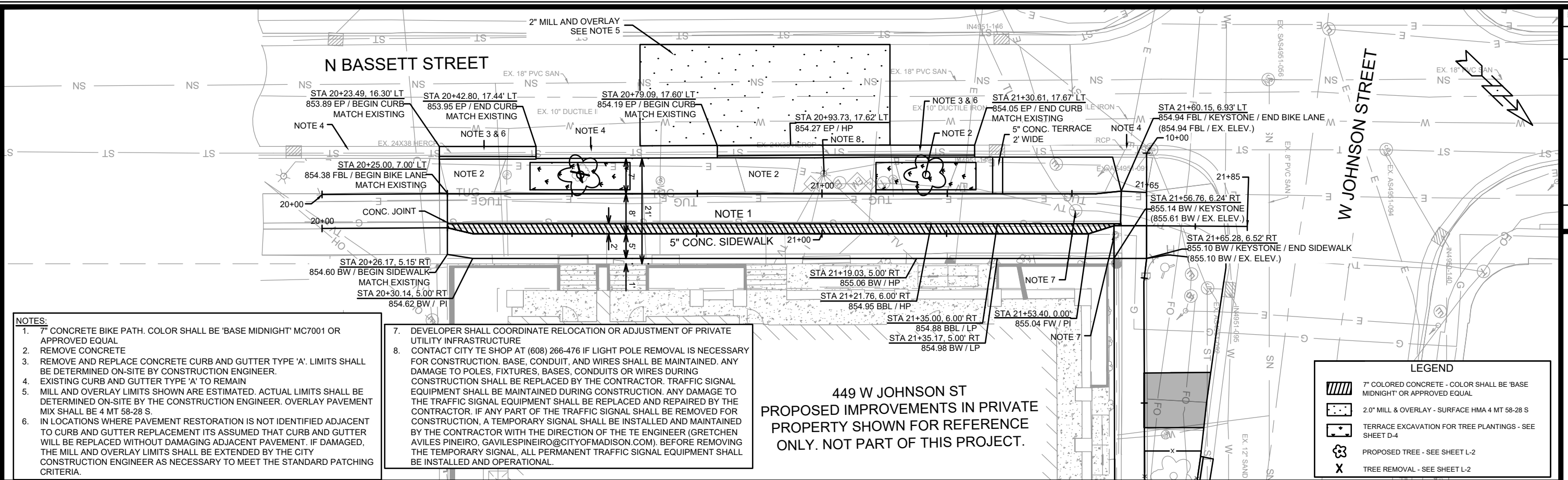
- CONTACT CITY TE SHOP AT (608) 266-476 IF LIGHT POLE REMOVAL IS NECESSARY FOR CONSTRUCTION. BASE, CONDUIT, AND WIRES SHALL BE MAINTAINED. ANY DAMAGE TO POLES, FIXTURES, BASES, CONDUITS OR WIRES DURING CONSTRUCTION SHALL BE REPLACED BY THE CONTRACTOR. TRAFFIC SIGNAL EQUIPMENT SHALL BE MAINTAINED DURING CONSTRUCTION. ANY DAMAGE TO THE TRAFFIC SIGNAL EQUIPMENT SHALL BE REPLACED AND REPAIRED BY THE CONTRACTOR. IF ANY PART OF THE TRAFFIC SIGNAL SHALL BE REMOVED FOR CONSTRUCTION, A TEMPORARY SIGNAL SHALL BE INSTALLED AND MAINTAINED BY THE CONTRACTOR WITH THE DIRECTION OF THE TE ENGINEER (GRETCHEN AVILES PINEIRO, GAVILESPINEIRO@CITYOFMADISON.COM). BEFORE REMOVING THE TEMPORARY SIGNAL, ALL PERMANENT TRAFFIC SIGNAL EQUIPMENT SHALL BE INSTALLED AND OPERATIONAL.

LEGEND

- 7" CONCRETE BUS PAD AND TERRACE
- 10" CONCRETE PAVEMENT
- SAWCUT PAVEMENT LIMITS
- TREE PROTECTION - SEE SHEET L-1
- TREE REMOVAL - SEE SHEET L-1



15030	MADISON, WI	9499	CONTRACT NO.:
PLAN AND PROFILE - W JOHNSON ST 449 W JOHNSON ST M:\DESIGN\Projects\15030\CAD\Streets\15030EN-PnP.dwg			
15030			P-1



NOTES:

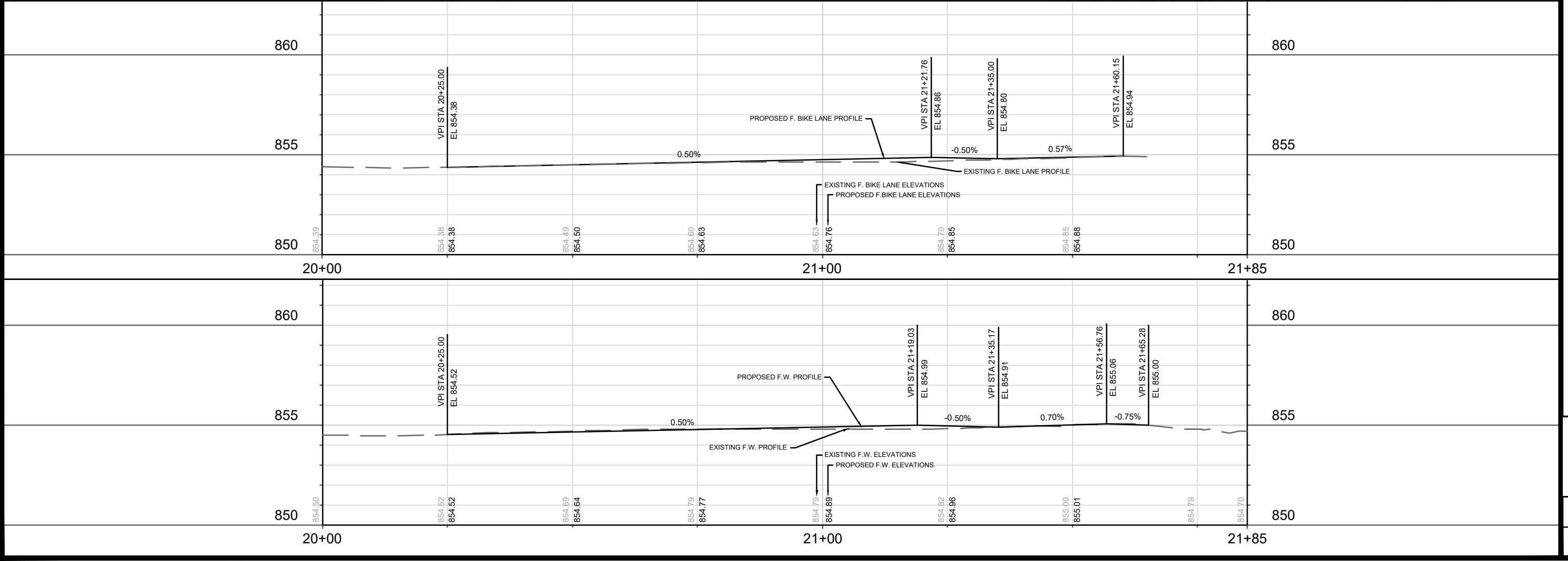
- 7" CONCRETE BIKE PATH. COLOR SHALL BE 'BASE MIDNIGHT' MC7001 OR APPROVED EQUAL
- REMOVE CONCRETE
- REMOVE AND REPLACE CONCRETE CURB AND GUTTER TYPE 'A'. LIMITS SHALL BE DETERMINED ON-SITE BY CONSTRUCTION ENGINEER.
- EXISTING CURB AND GUTTER TYPE 'A' TO REMAIN
- MILL AND OVERLAY LIMITS SHOWN ARE ESTIMATED. ACTUAL LIMITS SHALL BE DETERMINED ON-SITE BY THE CONSTRUCTION ENGINEER. OVERLAY PAVEMENT MIX SHALL BE 4 MT 58-28 S.
- IN LOCATIONS WHERE PAVEMENT RESTORATION IS NOT IDENTIFIED ADJACENT TO CURB AND GUTTER REPLACEMENT ITS ASSUMED THAT CURB AND GUTTER WILL BE REPLACED WITHOUT DAMAGING ADJACENT PAVEMENT. IF DAMAGED, THE MILL AND OVERLAY LIMITS SHALL BE EXTENDED BY THE CITY CONSTRUCTION ENGINEER AS NECESSARY TO MEET THE STANDARD PATCHING CRITERIA.

- DEVELOPER SHALL COORDINATE RELOCATION OR ADJUSTMENT OF PRIVATE UTILITY INFRASTRUCTURE
- CONTACT CITY TE SHOP AT (608) 266-476 IF LIGHT POLE REMOVAL IS NECESSARY FOR CONSTRUCTION. BASE, CONDUIT, AND WIRES SHALL BE MAINTAINED. ANY DAMAGE TO POLES, FIXTURES, BASES, CONDUITS OR WIRES DURING CONSTRUCTION SHALL BE REPLACED BY THE CONTRACTOR. TRAFFIC SIGNAL EQUIPMENT SHALL BE MAINTAINED DURING CONSTRUCTION. ANY DAMAGE TO THE TRAFFIC SIGNAL EQUIPMENT SHALL BE REPLACED AND REPAIRED BY THE CONTRACTOR. IF ANY PART OF THE TRAFFIC SIGNAL SHALL BE REMOVED FOR CONSTRUCTION, A TEMPORARY SIGNAL SHALL BE INSTALLED AND MAINTAINED BY THE CONTRACTOR WITH THE DIRECTION OF THE TE ENGINEER (GRETCHEN AVILES PINEIRO, GAVILESPINEIRO@CITYOFMADISON.COM). BEFORE REMOVING THE TEMPORARY SIGNAL, ALL PERMANENT TRAFFIC SIGNAL EQUIPMENT SHALL BE INSTALLED AND OPERATIONAL.

449 W JOHNSON ST
 PROPOSED IMPROVEMENTS IN PRIVATE
 PROPERTY SHOWN FOR REFERENCE
 ONLY. NOT PART OF THIS PROJECT.

LEGEND

- 7" COLORED CONCRETE - COLOR SHALL BE 'BASE MIDNIGHT' OR APPROVED EQUAL
- 2.0" MILL & OVERLAY - SURFACE HMA 4 MT 58-28 S
- TERRACE EXCAVATION FOR TREE PLANTINGS - SEE SHEET D-4
- PROPOSED TREE - SEE SHEET L-2
- TREE REMOVAL - SEE SHEET L-2

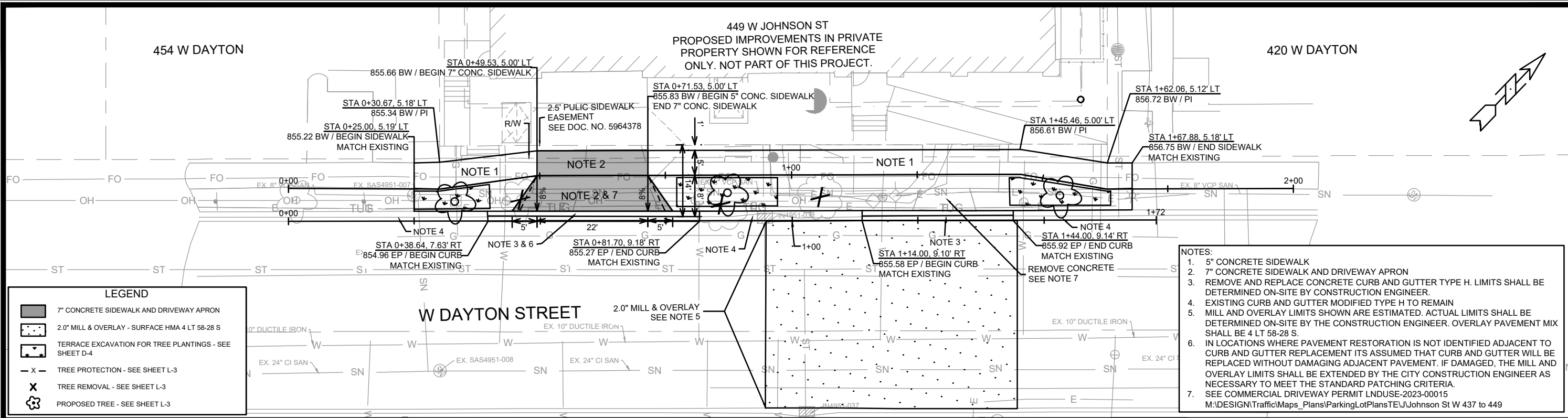


15030	MADISON, WI	9499	15030
PLAN AND PROFILE - N BASSETT ST		449 W JOHNSON ST	
M:\DESIGN\Projects\15030\CAD\Streets\15030EN-PnP.dwg		15030	
P-2		P-2	

454 W DAYTON

420 W DAYTON

449 W JOHNSON ST
PROPOSED IMPROVEMENTS IN PRIVATE
PROPERTY SHOWN FOR REFERENCE
ONLY. NOT PART OF THIS PROJECT.

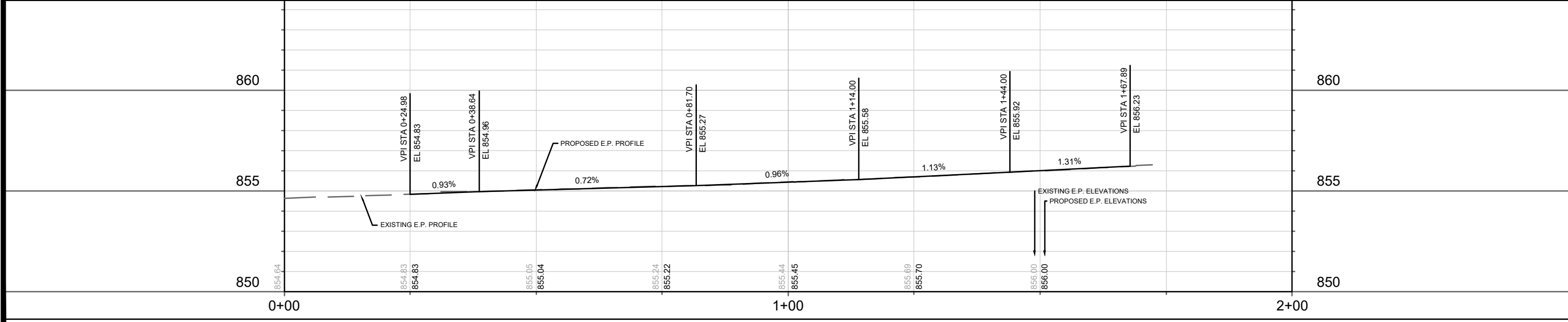
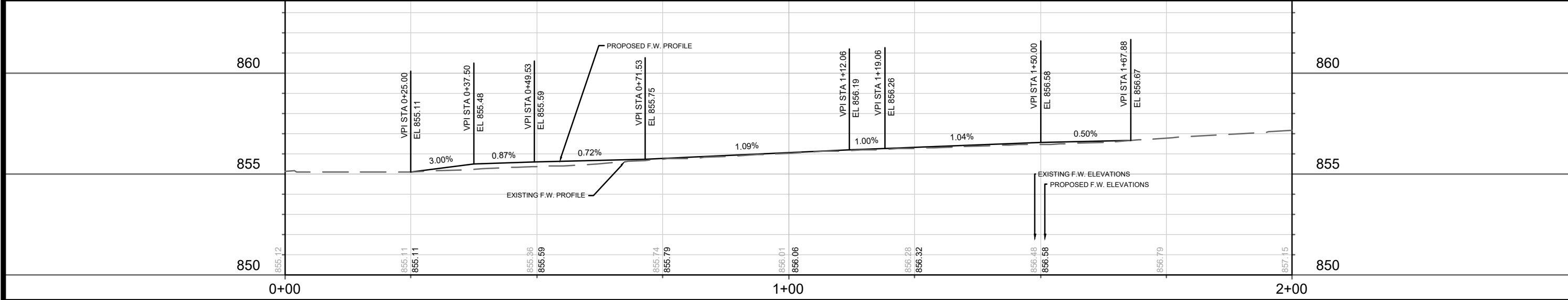


LEGEND

- 7" CONCRETE SIDEWALK AND DRIVEWAY APRON
- 2.0" MILL & OVERLAY - SURFACE HMA 4 LT 58-28 S
- TERRACE EXCAVATION FOR TREE PLANTINGS - SEE SHEET D-4
- TREE PROTECTION - SEE SHEET L-3
- TREE REMOVAL - SEE SHEET L-3
- PROPOSED TREE - SEE SHEET L-3

NOTES:

- 5" CONCRETE SIDEWALK
- 7" CONCRETE SIDEWALK AND DRIVEWAY APRON
- REMOVE AND REPLACE CONCRETE CURB AND GUTTER TYPE H. LIMITS SHALL BE DETERMINED ON-SITE BY CONSTRUCTION ENGINEER.
- EXISTING CURB AND GUTTER MODIFIED TYPE H TO REMAIN
- MILL AND OVERLAY LIMITS SHOWN ARE ESTIMATED. ACTUAL LIMITS SHALL BE DETERMINED ON-SITE BY THE CONSTRUCTION ENGINEER. OVERLAY PAVEMENT MIX SHALL BE 4 LT 58-28 S.
- IN LOCATIONS WHERE PAVEMENT RESTORATION IS NOT IDENTIFIED ADJACENT TO CURB AND GUTTER REPLACEMENT ITS ASSUMED THAT CURB AND GUTTER WILL BE REPLACED WITHOUT DAMAGING ADJACENT PAVEMENT. IF DAMAGED, THE MILL AND OVERLAY LIMITS SHALL BE EXTENDED BY THE CITY CONSTRUCTION ENGINEER AS NECESSARY TO MEET THE STANDARD PATCHING CRITERIA.
- SEE COMMERCIAL DRIVEWAY PERMIT LNDUSE-2023-00015
M:\DESIGN\TrafficMaps_Plans\ParkingLotPlans\TE\Johnson St W 437 to 449

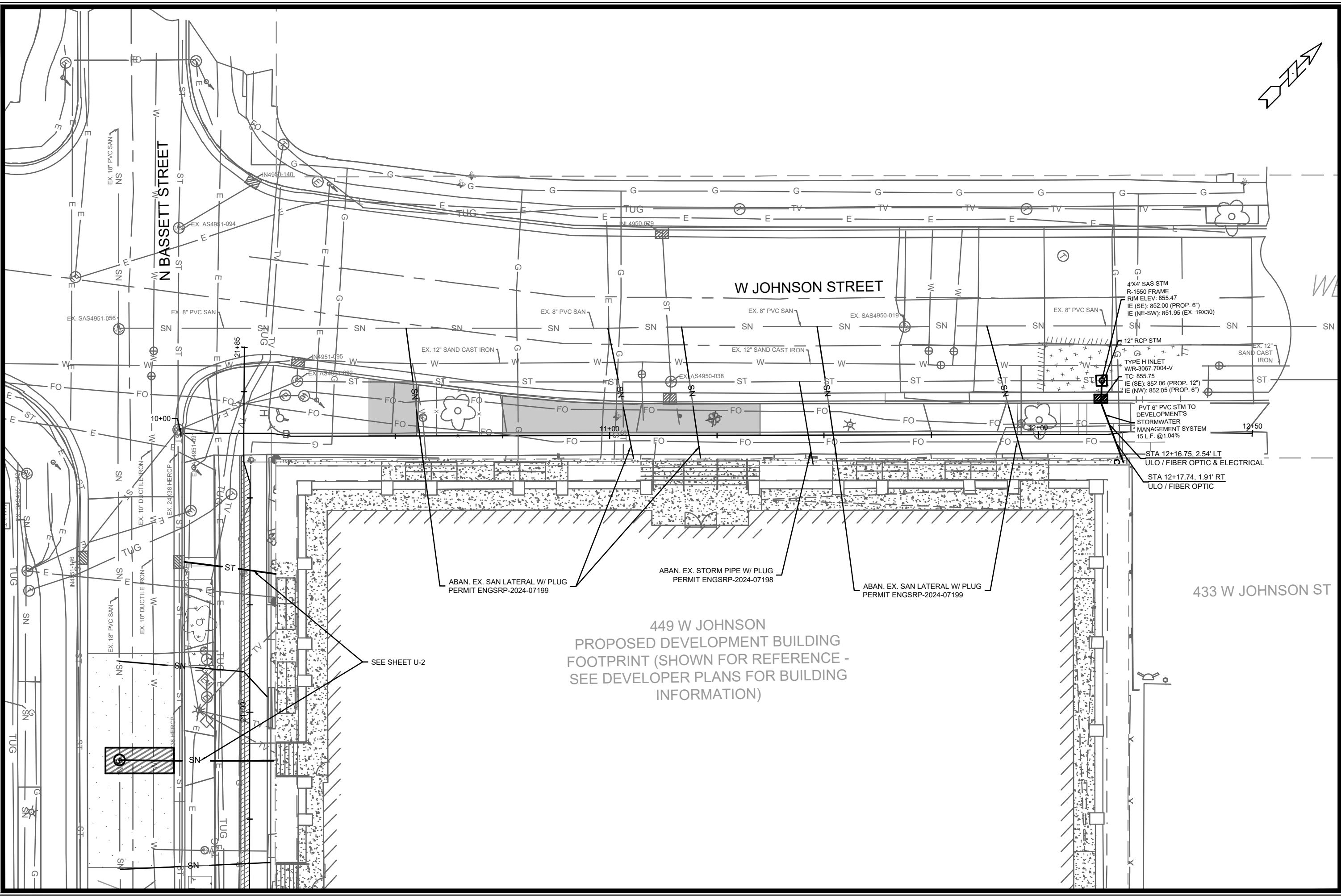


DATE	9/12/2024
REVISION	
MARK	
Designated By	GCIT
Date	9/12/2024
Scale	1:20
Sheet	P-3

15030
MADISON, WI
9499
CONTRACT NO:

PLAN AND PROFILE - W DAYTON ST


449 W JOHNSON ST
M:\DESIGN\Projects\15030\CAD\Streets\15030EN-PnP.dwg
15030
P-3



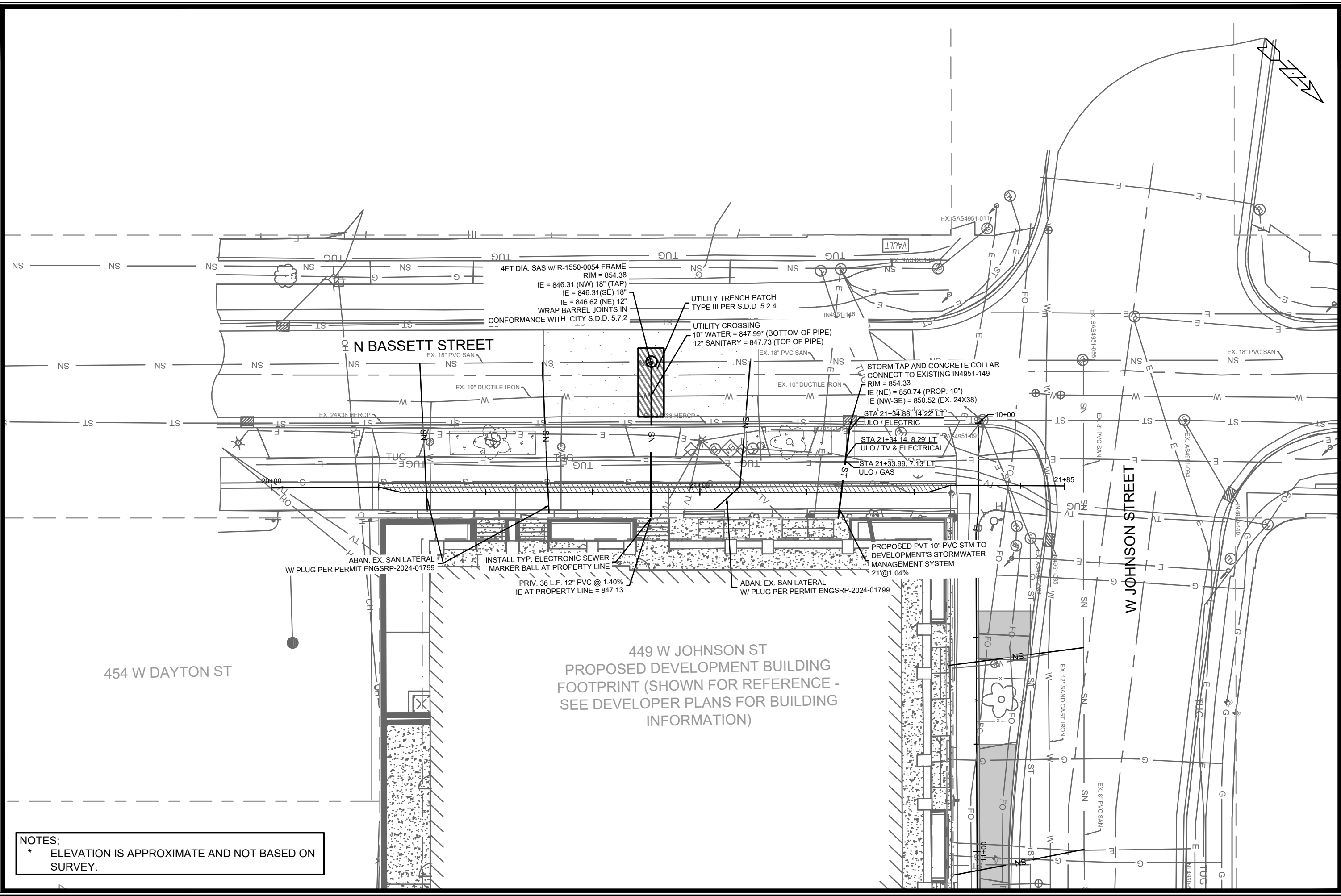
MARK	REVISION	DATE	BY
15030	10/08/2024	11:22 AM	U-1

15030
 MADISON, WI
 CONTRACT NO.: 9499

UTILITIES PLAN - W JOHNSON STREET
 449 W JOHNSON ST
 M:\DESIGN\Projects\15030\CAD\Sewers\15030SWR-PnP.dwg



15030
 U-1




NOTES:
 * ELEVATION IS APPROXIMATE AND NOT BASED ON SURVEY.

MARK	REVISION	DATE	BY
15030	15030	10/08/2024	11:22 AM
Designated By: ##	15030		U-2

15030
 MADISON, WI
 CONTRACT NO.: 9499

UTILITIES PLAN - N BASSETT STREET
 449 W JOHNSON ST
 M:\DESIGN\Projects\15030\CAD\Sewers\15030SWR-PnP.dwg

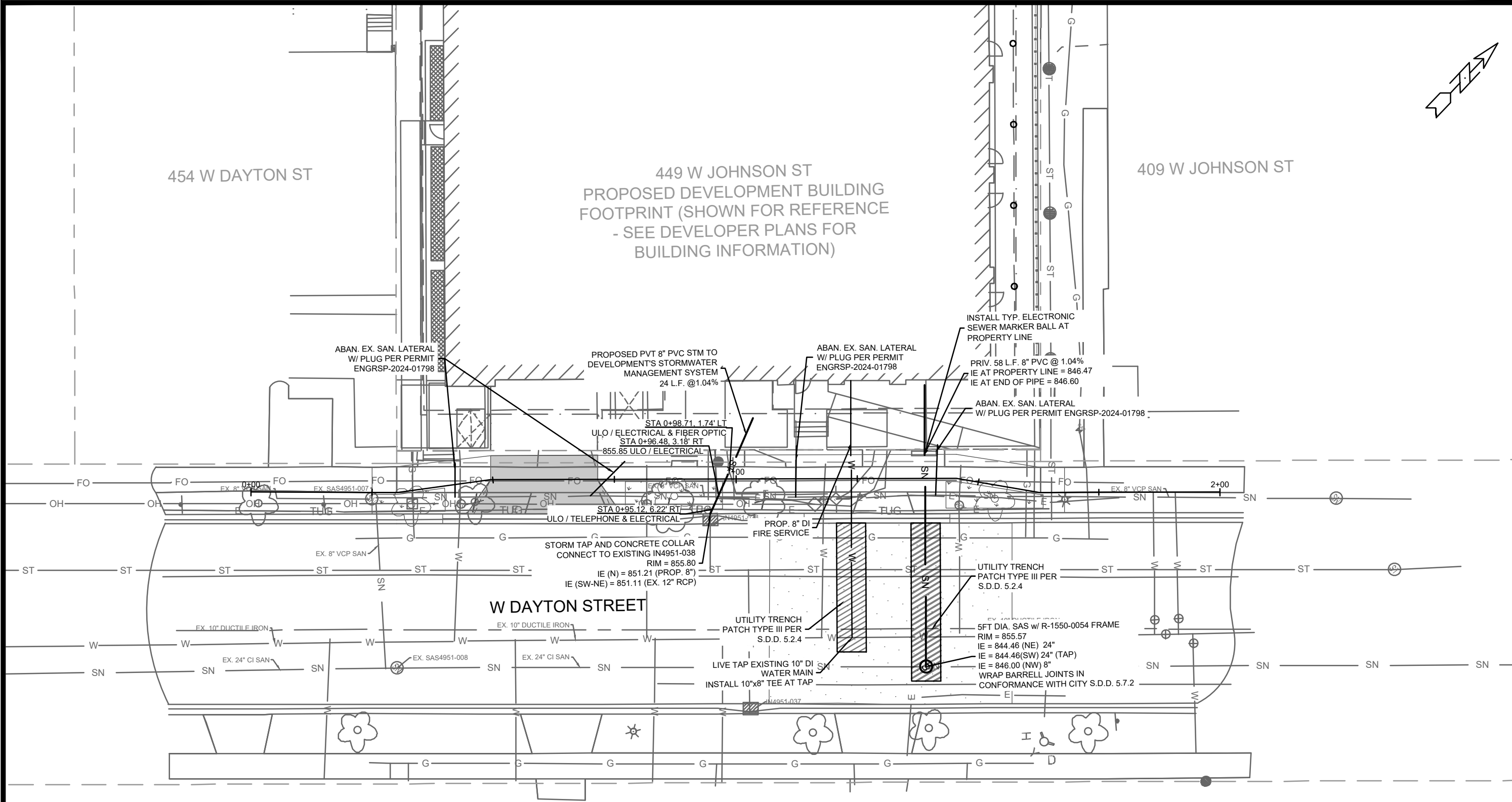
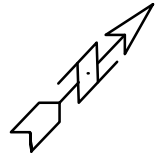


15030
 U-2

454 W DAYTON ST

449 W JOHNSON ST
PROPOSED DEVELOPMENT BUILDING
FOOTPRINT (SHOWN FOR REFERENCE
- SEE DEVELOPER PLANS FOR
BUILDING INFORMATION)

409 W JOHNSON ST



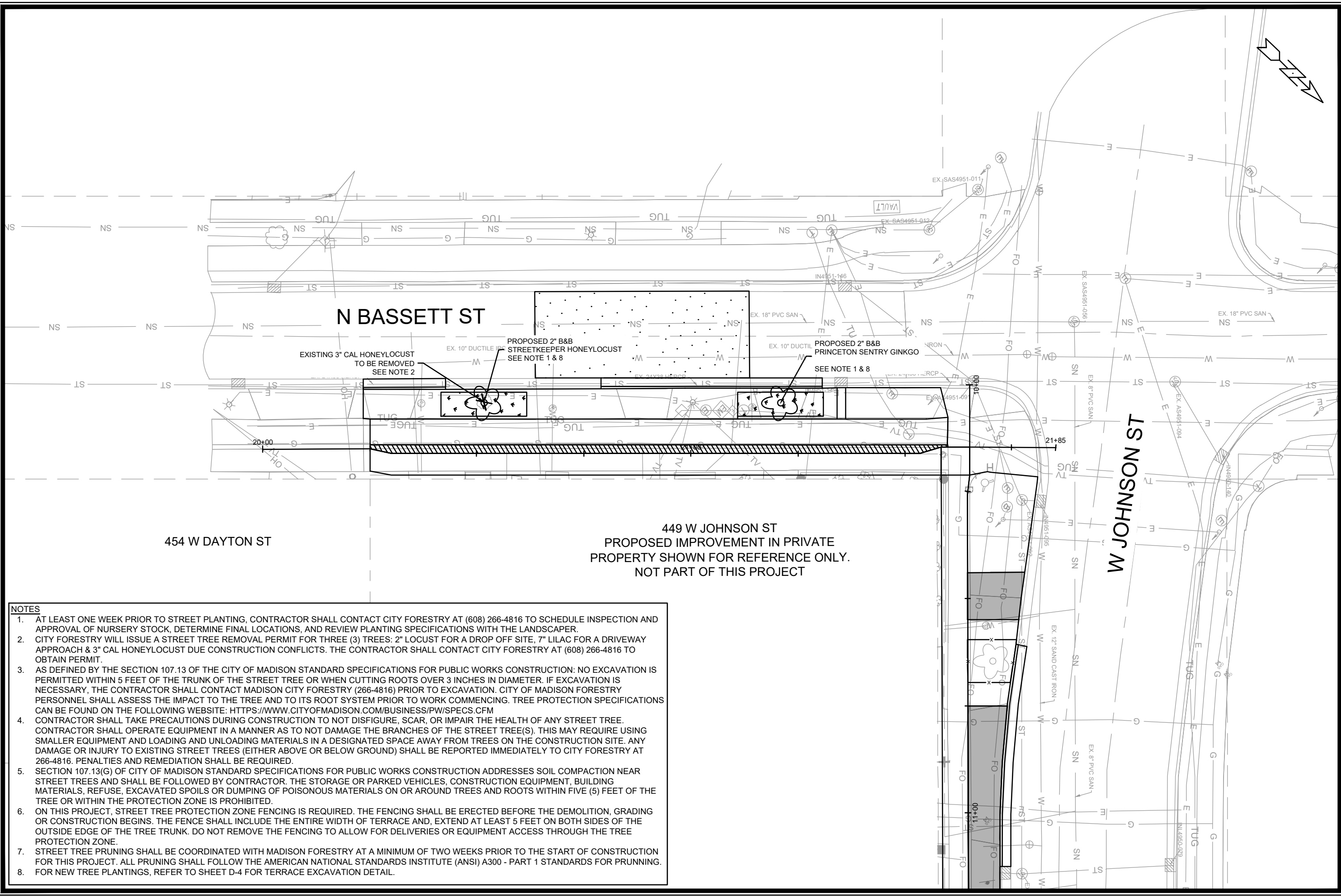
DATE	BT
REVISION	
MARK	
Designated By: /##	15030
Date: 10/08/2024 11:22 AM	U-3
Scale: 1:20	

15030
MADISON, WI
9499
CONTRACT NO:

UTILITIES PLAN - W DAYTON STREET
449 W JOHNSON ST
M:\DESIGN\Projects\15030\CAD\Sewers\15030SWR-PnP.dwg



15030
U-3



N BASSETT ST

W JOHNSON ST

454 W DAYTON ST


449 W JOHNSON ST
 PROPOSED IMPROVEMENT IN PRIVATE
 PROPERTY SHOWN FOR REFERENCE ONLY.
 NOT PART OF THIS PROJECT

- NOTES**
1. AT LEAST ONE WEEK PRIOR TO STREET PLANTING, CONTRACTOR SHALL CONTACT CITY FORESTRY AT (608) 266-4816 TO SCHEDULE INSPECTION AND APPROVAL OF NURSERY STOCK, DETERMINE FINAL LOCATIONS, AND REVIEW PLANTING SPECIFICATIONS WITH THE LANDSCAPER.
 2. CITY FORESTRY WILL ISSUE A STREET TREE REMOVAL PERMIT FOR THREE (3) TREES: 2" LOCUST FOR A DROP OFF SITE, 7" LILAC FOR A DRIVEWAY APPROACH & 3" CAL HONEYLOCUST DUE CONSTRUCTION CONFLICTS. THE CONTRACTOR SHALL CONTACT CITY FORESTRY AT (608) 266-4816 TO OBTAIN PERMIT.
 3. AS DEFINED BY THE SECTION 107.13 OF THE CITY OF MADISON STANDARD SPECIFICATIONS FOR PUBLIC WORKS CONSTRUCTION: NO EXCAVATION IS PERMITTED WITHIN 5 FEET OF THE TRUNK OF THE STREET TREE OR WHEN CUTTING ROOTS OVER 3 INCHES IN DIAMETER. IF EXCAVATION IS NECESSARY, THE CONTRACTOR SHALL CONTACT MADISON CITY FORESTRY (266-4816) PRIOR TO EXCAVATION. CITY OF MADISON FORESTRY PERSONNEL SHALL ASSESS THE IMPACT TO THE TREE AND TO ITS ROOT SYSTEM PRIOR TO WORK COMMENCING. TREE PROTECTION SPECIFICATIONS CAN BE FOUND ON THE FOLLOWING WEBSITE: [HTTPS://WWW.CITYOFMADISON.COM/BUSINESS/PW/SPECS.CFM](https://www.cityofmadison.com/business/pw/specs.cfm)
 4. CONTRACTOR SHALL TAKE PRECAUTIONS DURING CONSTRUCTION TO NOT DISFIGURE, SCAR, OR IMPAIR THE HEALTH OF ANY STREET TREE. CONTRACTOR SHALL OPERATE EQUIPMENT IN A MANNER AS TO NOT DAMAGE THE BRANCHES OF THE STREET TREE(S). THIS MAY REQUIRE USING SMALLER EQUIPMENT AND LOADING AND UNLOADING MATERIALS IN A DESIGNATED SPACE AWAY FROM TREES ON THE CONSTRUCTION SITE. ANY DAMAGE OR INJURY TO EXISTING STREET TREES (EITHER ABOVE OR BELOW GROUND) SHALL BE REPORTED IMMEDIATELY TO CITY FORESTRY AT 266-4816. PENALTIES AND REMEDIATION SHALL BE REQUIRED.
 5. SECTION 107.13(G) OF CITY OF MADISON STANDARD SPECIFICATIONS FOR PUBLIC WORKS CONSTRUCTION ADDRESSES SOIL COMPACTION NEAR STREET TREES AND SHALL BE FOLLOWED BY CONTRACTOR. THE STORAGE OR PARKED VEHICLES, CONSTRUCTION EQUIPMENT, BUILDING MATERIALS, REFUSE, EXCAVATED SPOILS OR DUMPING OF POISONOUS MATERIALS ON OR AROUND TREES AND ROOTS WITHIN FIVE (5) FEET OF THE TREE OR WITHIN THE PROTECTION ZONE IS PROHIBITED.
 6. ON THIS PROJECT, STREET TREE PROTECTION ZONE FENCING IS REQUIRED. THE FENCING SHALL BE ERECTED BEFORE THE DEMOLITION, GRADING OR CONSTRUCTION BEGINS. THE FENCE SHALL INCLUDE THE ENTIRE WIDTH OF TERRACE AND, EXTEND AT LEAST 5 FEET ON BOTH SIDES OF THE OUTSIDE EDGE OF THE TREE TRUNK. DO NOT REMOVE THE FENCING TO ALLOW FOR DELIVERIES OR EQUIPMENT ACCESS THROUGH THE TREE PROTECTION ZONE.
 7. STREET TREE PRUNING SHALL BE COORDINATED WITH MADISON FORESTRY AT A MINIMUM OF TWO WEEKS PRIOR TO THE START OF CONSTRUCTION FOR THIS PROJECT. ALL PRUNING SHALL FOLLOW THE AMERICAN NATIONAL STANDARDS INSTITUTE (ANSI) A300 - PART 1 STANDARDS FOR PRUNNING.
 8. FOR NEW TREE PLANTINGS, REFER TO SHEET D-4 FOR TERRACE EXCAVATION DETAIL.

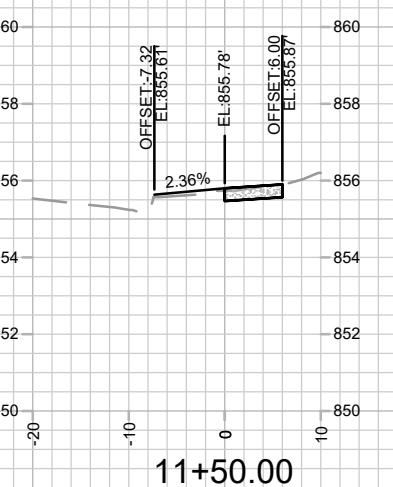
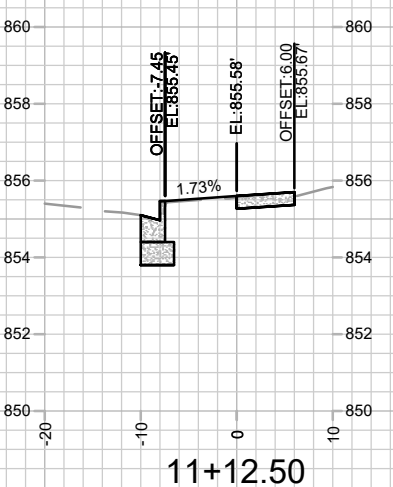
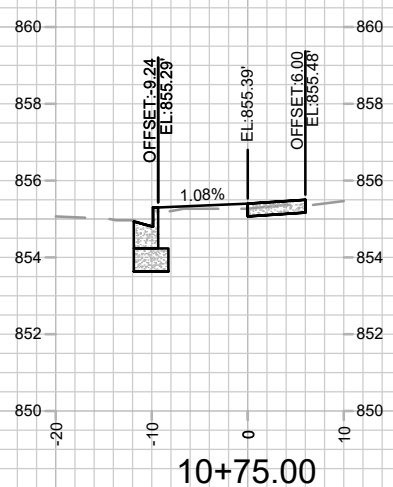
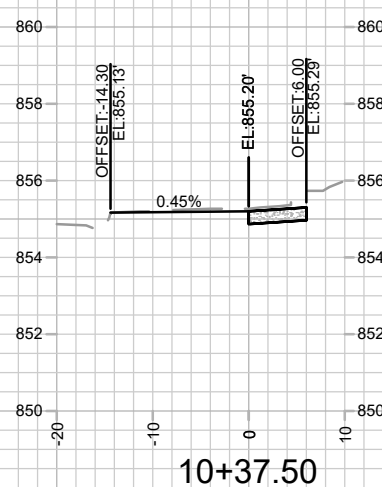
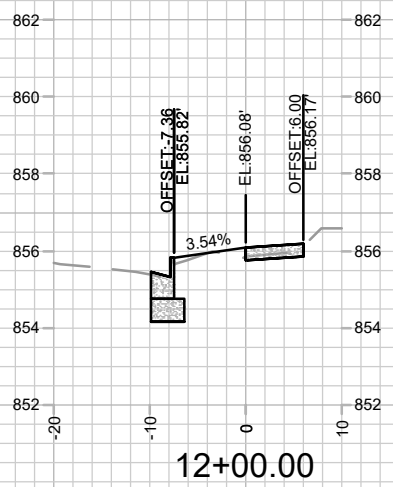
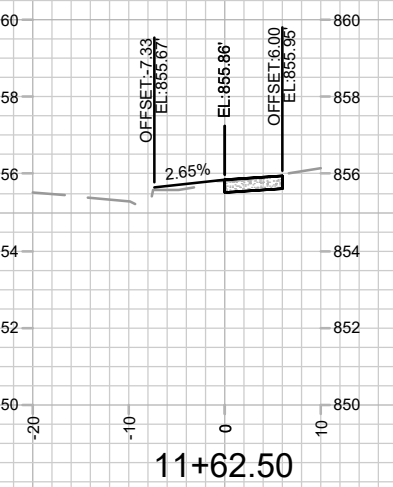
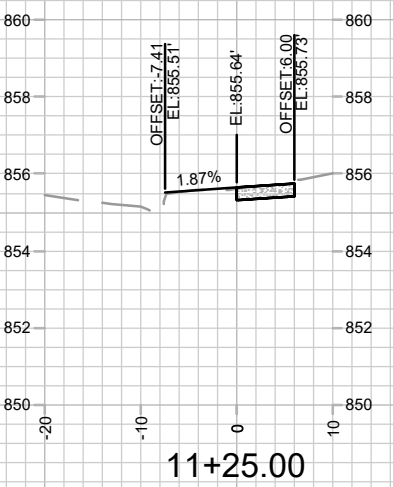
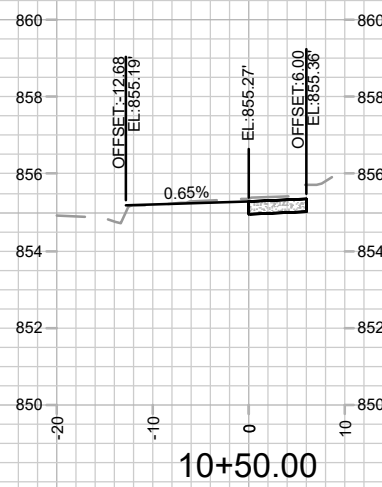
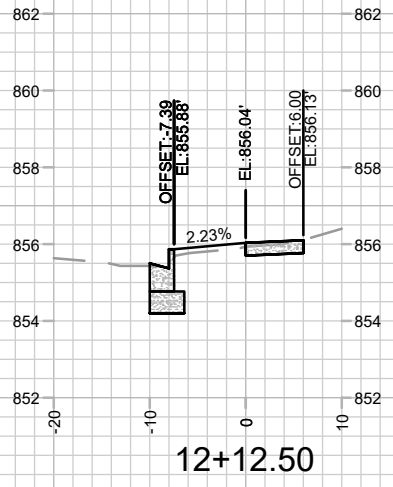
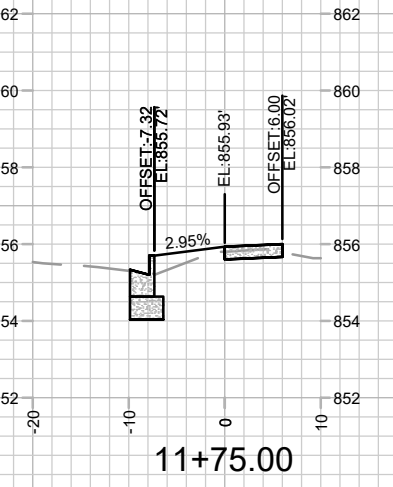
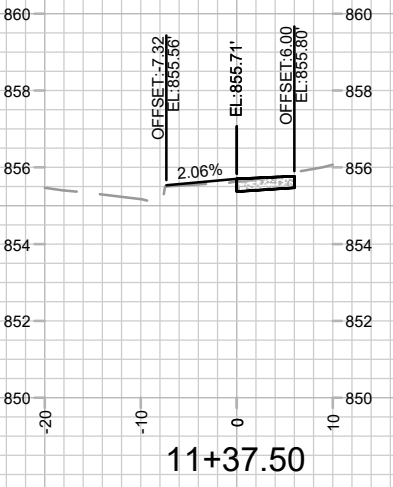
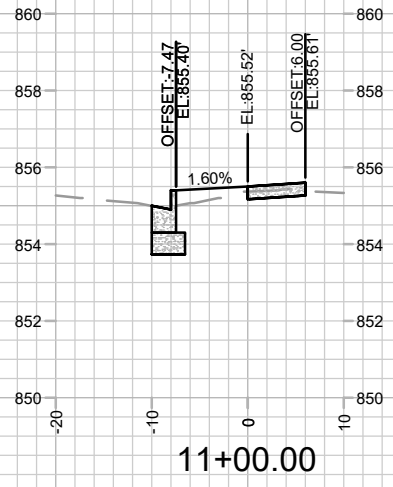
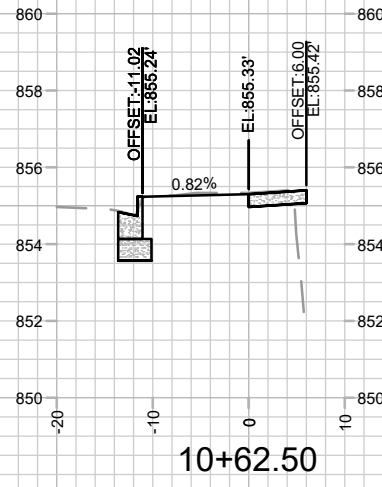
DATE	11/20
REVISION	
DESIGNED BY: ##	15030
DATE	9/27/2024 3:23 PM
SCALE	1:20
PROJECT NO.	15030

15030
 MADISON, WI
 9499
 CONTRACT NO.:

LANDSCAPING PLAN - N BASSETT ST
 449 W JOHNSON ST
 M:\DESIGN\Projects\15030\CAD\Streets\15030EN\LandscapingPlan.dwg



15030
 L-2



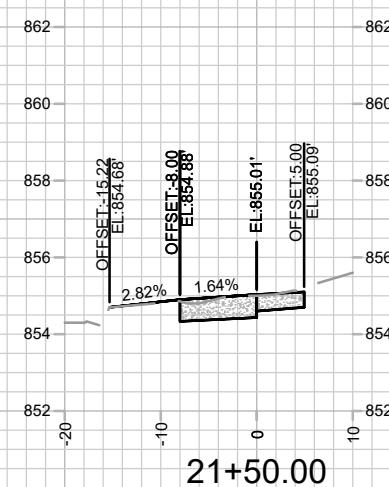
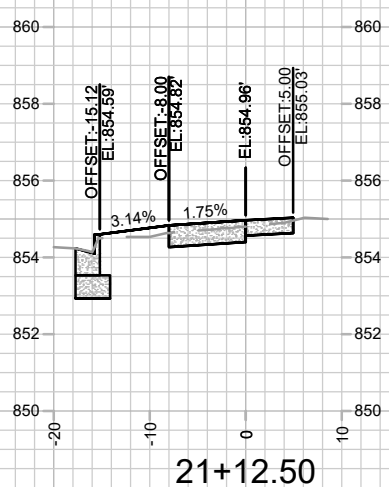
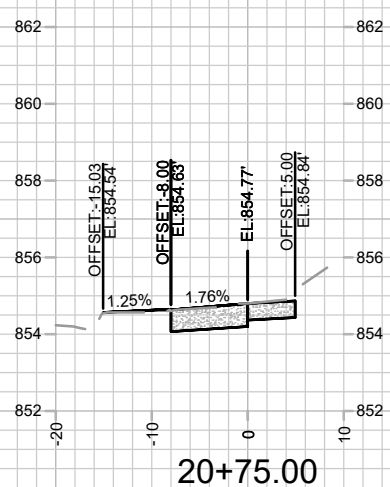
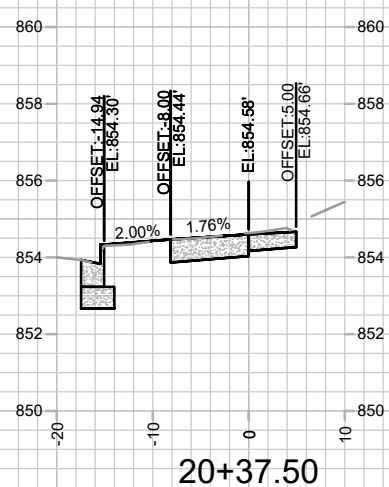
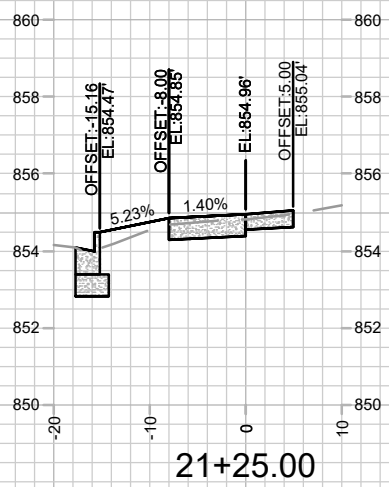
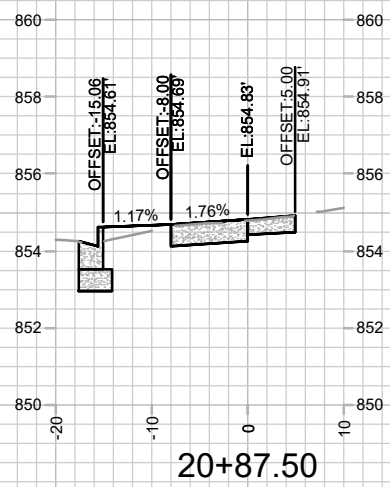
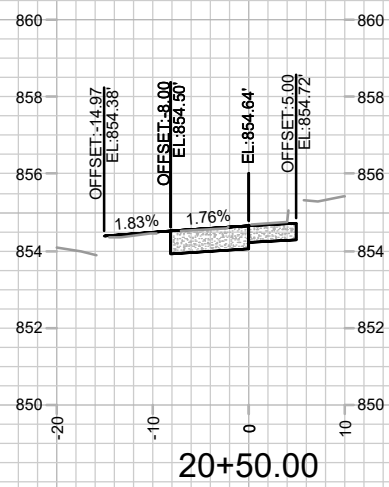
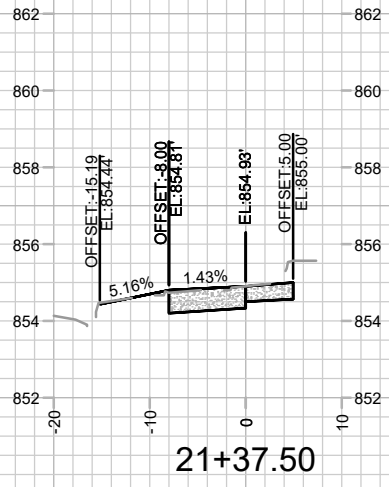
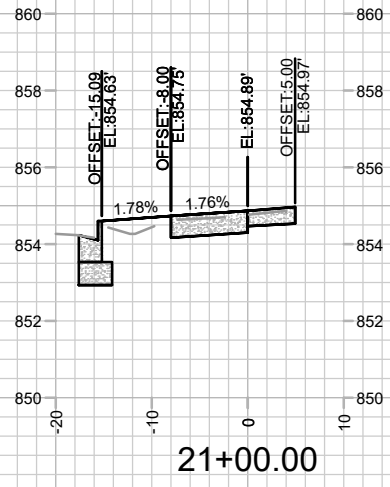
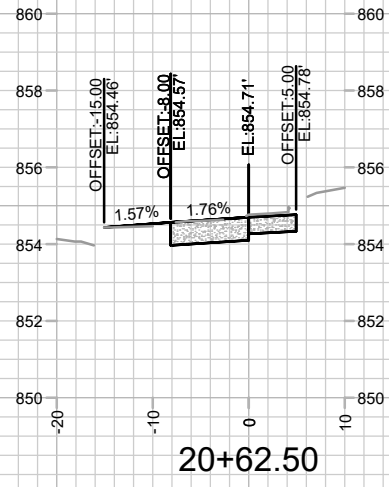
MARK	REVISION	DATE	BY

15030
MADISON, WI
9499
CONTRACT NO:

CROSS SECTIONS - W JOHNSON ST
449 W JOHNSON ST
M:\DESIGN\Projects\15030\CAD\Streets\15030EN-Xsections.dwg



15030
X-1



MARK	REVISION	DATE	BY

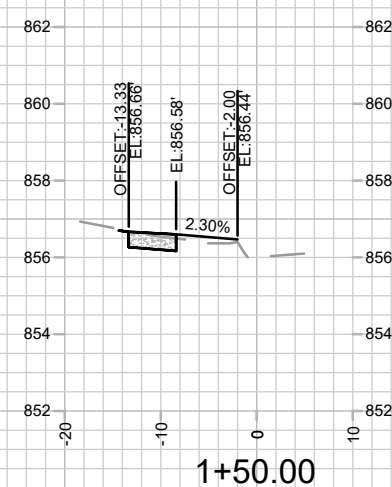
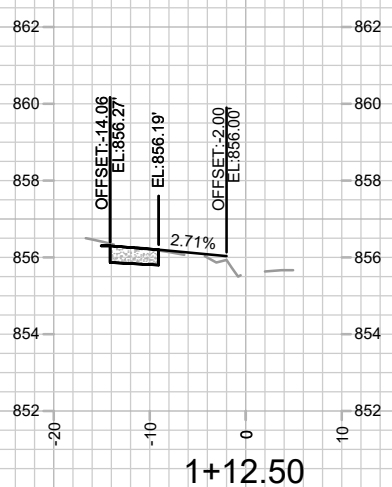
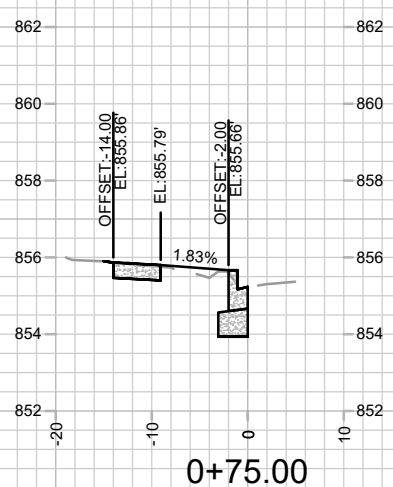
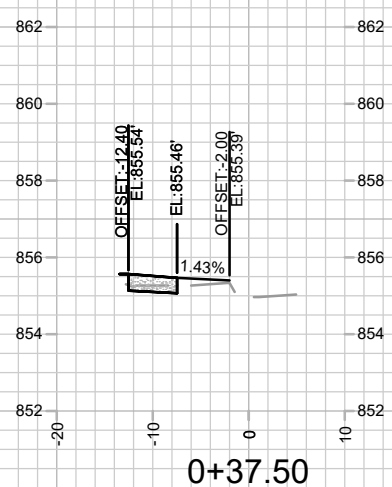
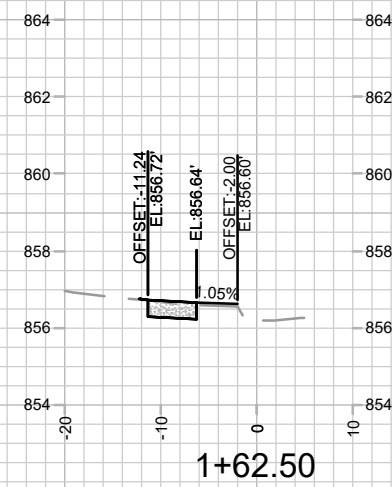
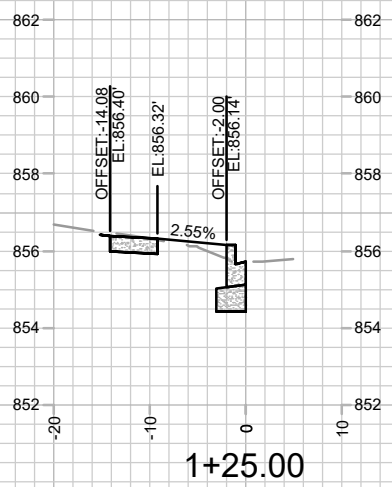
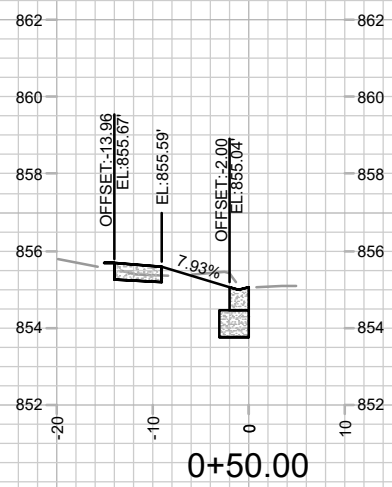
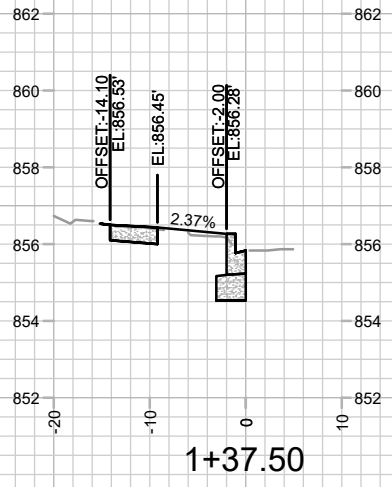
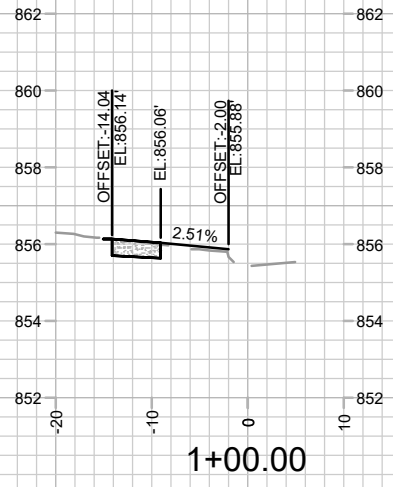
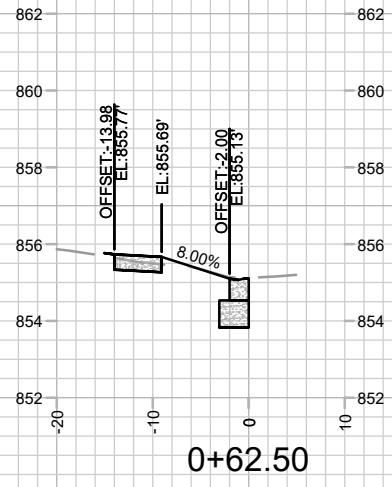
Designated By: #15030
Date: 07/20/24 9:44 AM
Scale: 1" = 20'
X-2

15030
MADISON, WI
9499
CONTRACT NO:

CROSS SECTIONS - N BASSETT ST
449 W JOHNSON ST
M:\DESIGN\Projects\15030\CAD\Streets\15030EN-Xsections.dwg



15030
X-2



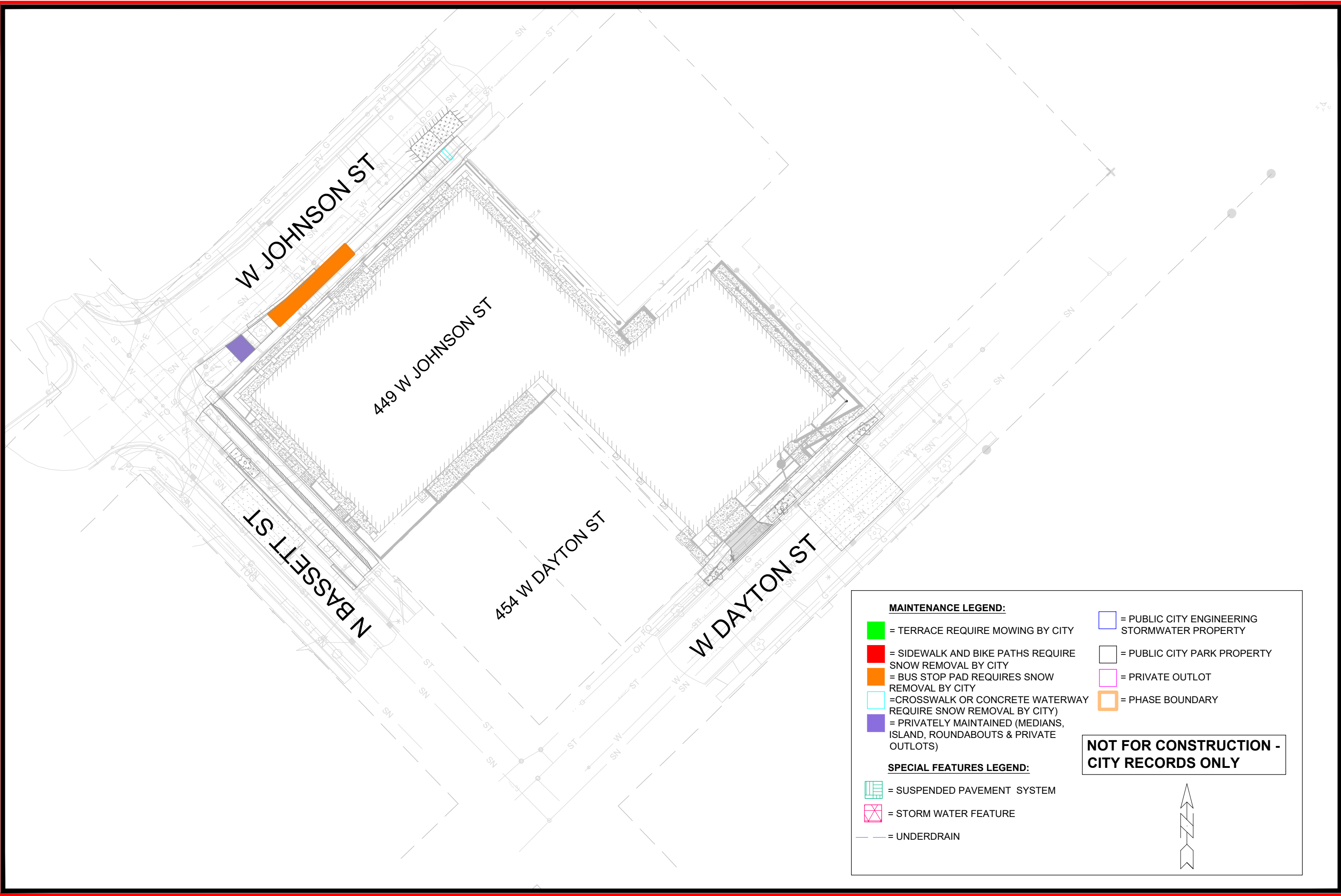
MARK	REVISION	DATE	BY

15030
MADISON, WI
9499
CONTRACT NO:

CROSS SECTIONS - W DAYTON ST
449 W JOHNSON ST
M:\DESIGN\Projects\15030\CAD\Streets\15030EN-Xsections.dwg



15030
X-3



MAINTENANCE LEGEND:

- = TERRACE REQUIRE MOWING BY CITY
- = SIDEWALK AND BIKE PATHS REQUIRE SNOW REMOVAL BY CITY
- = BUS STOP PAD REQUIRES SNOW REMOVAL BY CITY
- = CROSSWALK OR CONCRETE WATERWAY REQUIRE SNOW REMOVAL BY CITY
- = PRIVATELY MAINTAINED (MEDIANS, ISLAND, ROUNDABOUTS & PRIVATE OUTLOTS)
- = PUBLIC CITY ENGINEERING STORMWATER PROPERTY
- = PUBLIC CITY PARK PROPERTY
- = PRIVATE OUTLOT
- = PHASE BOUNDARY

SPECIAL FEATURES LEGEND:

- = SUSPENDED PAVEMENT SYSTEM
- = STORM WATER FEATURE
- = UNDERDRAIN

NOT FOR CONSTRUCTION - CITY RECORDS ONLY



MARK	REVISION	DATE	BY

15030
MADISON, WI
9499

CONTRACT NO:

MAINTENANCE PLAN
449 W JOHNSON ST
M:\DESIGN\Projects\15030\CAD\Streets\15030EN-Maintenance.dwg



15030
MN-1