

Madison, Wisconsin

# CITY OF MADISON

## CITY ENGINEERING DIVISION

### DEPARTMENT OF PUBLIC WORKS

# PLAN OF PROPOSED IMPROVEMENT

#### INDEX OF SHEETS

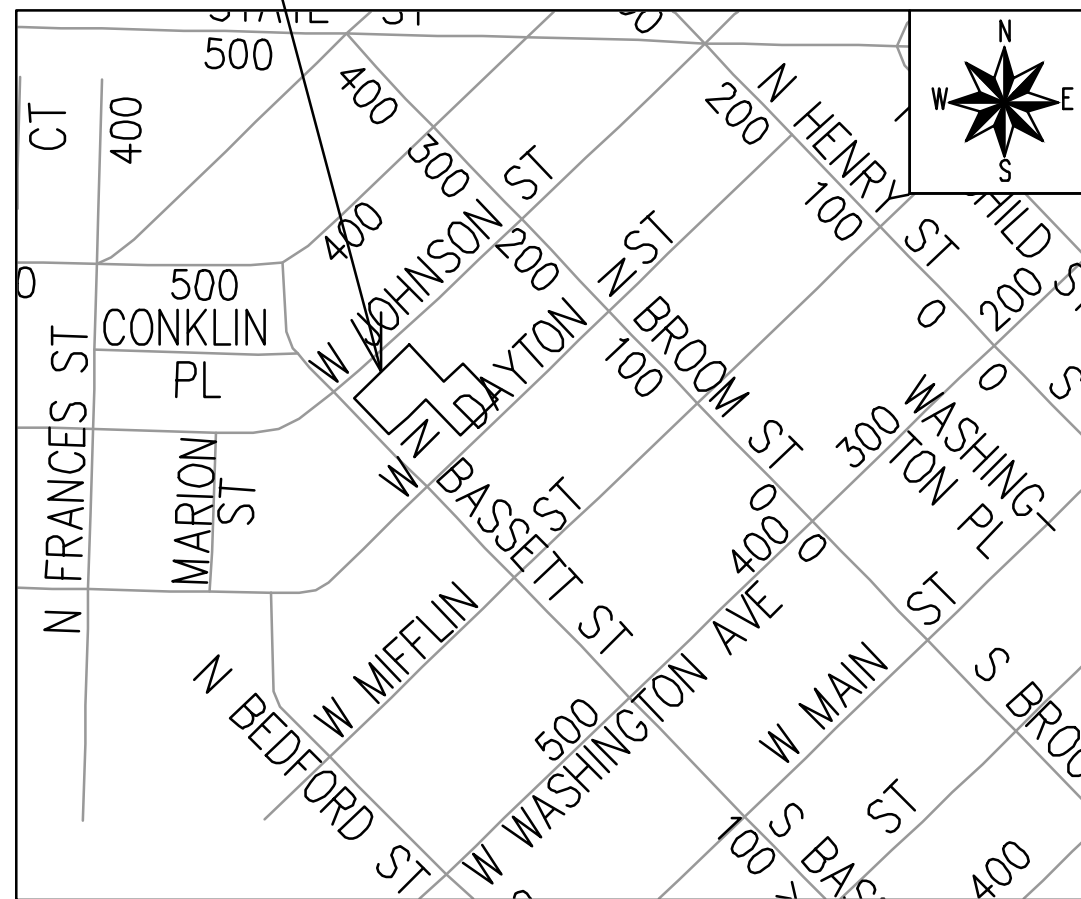
SHEET NO. D1	STANDARD NOTES
SHEET NO. D2-D3	TYPICAL SECTIONS
SHEET NO. D4	TERRACE EXCAVATION DETAIL
SHEET NO. P1-P3	PLAN & PROFILES
SHEET NO. U1-U3	UTILITY PLAN
SHEET NO. PM1	MARKING PLAN
SHEET NO. L1-L3	LANDSCAPING PLAN
SHEET NO. X1-X3	CROSS SECTIONS
SHEET NO. MN1	MAINTENANCE PLAN (CITY USE ONLY)

### 449 W JOHNSON ST

CITY PROJECT NO. 15030

CONTRACT NO. 9499

### PROJECT LOCATION



PUBLIC IMPROVEMENT PROJECT APPROVED

MARCH 19, 2024

BY THE COMMON COUNCIL OF MADISON, WISCONSIN

PUBLIC IMPROVEMENT DESIGN APPROVED BY:

*Chris Potykowski* Oct 10, 2024

City Engineer Date

STREET DESIGNED BY:

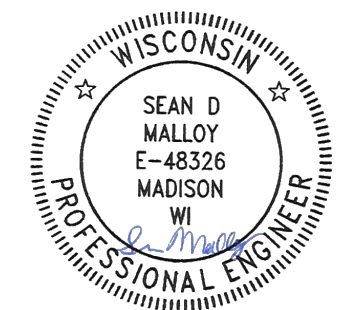


Oct 9, 2024

WATER DESIGNED BY:

LATERAL ONLY

PAVEMENT MARKINGS DESIGNED BY:



Oct 9, 2024

SANITARY SEWER DESIGNED BY:

LATERAL ONLY

STORM SEWER DESIGNED BY:

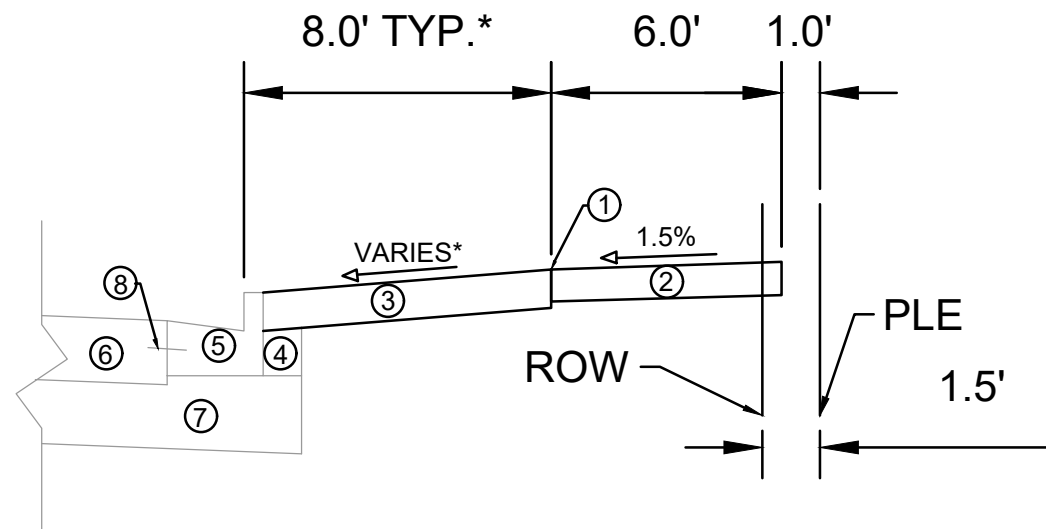
LATERAL ONLY

**REVISION 1 - 12/11/2024**  
- UPDATED SHEETS: P2, U2

**REVISION 2 - 02/19/2024**  
- UPDATED SHEETS: U1

FILE NAME: M:\DESIGN\Project\15030\CAD\Streets\15030FN-TLK\Sheet.dwg DATE: 8/15/2024 7:50 AM



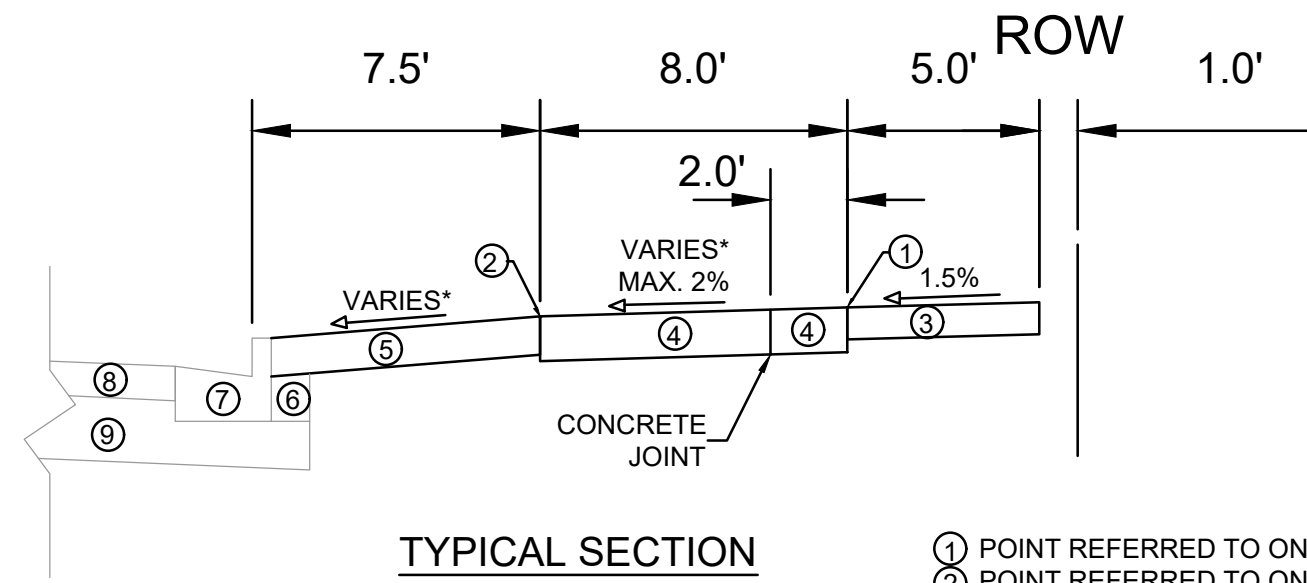


**TYPICAL SECTION  
W JOHNSON ST**

- ① POINT REFERRED TO ON PROFILE
- ② 5" CONCRETE SIDEWALK
- ③ 6" TOPSOIL, SEED AND MAT
- ④ EXISTING FILL TO REMAIN, INSTALL AT CURB REPLACEMENT LOCATIONS
- ⑤ EXISTING CURB TYPE A, REPLACE AT LOCATIONS SHOWN IN P SHEETS OR AS DETERMINED BY THE CONSTRUCTION ENGINEER\*\*
- ⑥ EXISTING CONCRETE PAVEMENT TO REMAIN
- ⑦ EXISTING ROAD BASE TO REMAIN
- ⑧ EXISTING TIE BAR

**SPECIAL NOTES:**

- \* SEE X-SHEETS AND P-SHEETS FOR CROSS SECTIONS AND SLOPES
- \*\* ANY CURB REPLACEMENT SHALL INCLUDE TIE BARS INTO THE ADJACENT CONCRETE PAVEMENT IN ACCORDANCE WITH THE CITY OF MADISON S.D.D. 3.10



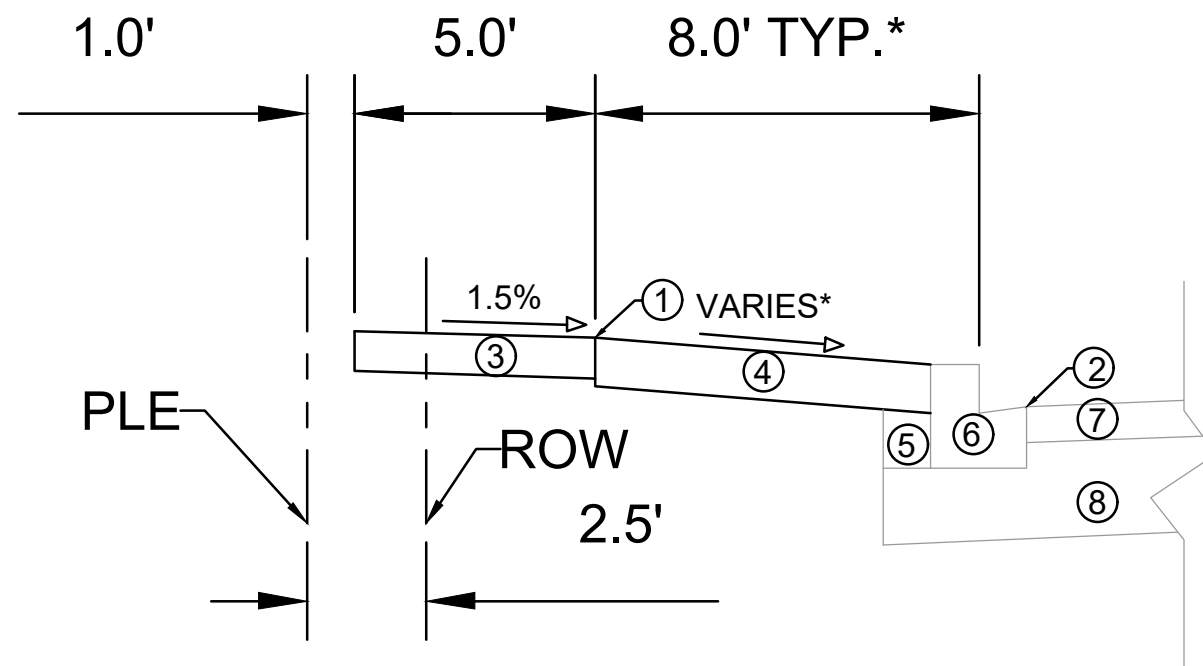
**TYPICAL SECTION  
N BASSETT ST**

- ① POINT REFERRED TO ON FRONT OF WALK PROFILE
- ② POINT REFERRED TO ON FRONT OF BIKE LANE PROFILE
- ③ 5" CONCRETE SIDEWALK
- ④ 7" COLORED CONCRETE BIKE LANE. COLOR SHALL BE 'BASE MIDNIGHT' MC7001 OR APPROVED EQUAL\*\*
- ⑤ 6" TOPSOIL, SEED AND MAT.
- ⑥ EXISTING FILL TO REMAIN, INSTALL AT CURB REPLACEMENT LOCATIONS
- ⑦ EXISTING CONCRETE CURB TYPE A, REPLACE AT LOCATIONS SHOWN IN P SHEETS OR AS DETERMINED BY THE CONSTRUCTION ENGINEER
- ⑧ EXISTING ASPHALTIC PAVEMENT TO REMAIN
- ⑨ EXISTING ROAD BASE TO REMAIN

**SPECIAL NOTES:**

- \* SEE X-SHEETS AND P-SHEETS FOR CROSS SECTIONS AND SLOPES
- \*\* TRANSVERSE JOINTS FOR BUFFER BETWEEN PATH AND SIDEWALK SHALL BE PLACED AT APPROXIMATELY 2FT. INSTALL 1/8" THICK FELT BOND BREAKER ON EITHER SIDE OF THE BUFFER.

15030	MADISON, WI	9499	CONTRACT NO:	D-2
M:\DESIGN\Projects\15030\CAD\Streets\15030EN-Details.dwg				
<b>15030</b> <b>D-2</b>				



**TYPICAL SECTION  
W DAYTON ST**

**SPECIAL NOTES:**

\*SEE X-SHEETS AND P-SHEETS FOR CROSS SECTIONS AND SLOPES

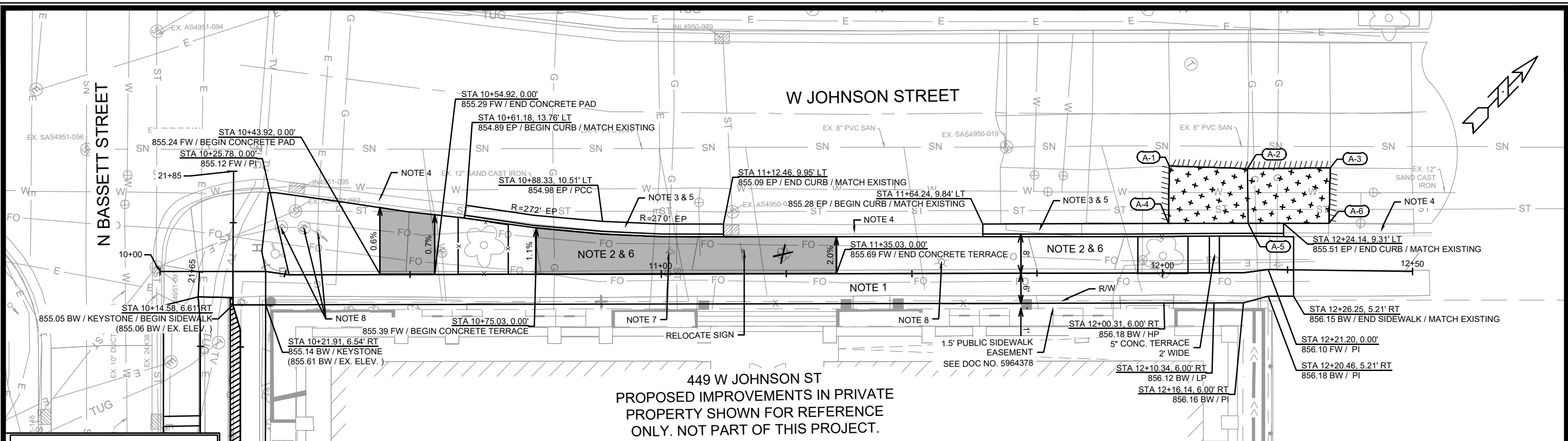
- ① POINT REFERRED TO ON FRONT OF WALK PROFILE
- ② POINT REFERRED TO ON EDGE OF PAVEMENT PROFILE
- ③ 5" CONCRETE SIDEWALK
- ④ 6" TOPSOIL, SEED AND MAT.
- ⑤ EXISTING FILL TO REMAIN, INSTALL AT CURB REPLACEMENT LOCATIONS
- ⑥ EXISTING CONCRETE CURB TYPE H, REPLACE AT LOCATIONS SHOWN IN P SHEETS OR AS DETERMINED BY THE CONSTRUCTION ENGINEER
- ⑦ EXISTING ASPHALTIC PAVEMENT TO REMAIN
- ⑧ EXISTING ROAD BASE TO REMAIN

MARK	REVISION	DATE	BY
15030	10/28/2024 3:22 PM		

15030  
MADISON, WI  
9499  
CONTRACT NO:

TYPICAL SECTIONS  
449 W JOHNSON ST  
M:\DESIGN\Projects\15030\CAD\Streets\15030EN-Details.dwg





449 W JOHNSON ST  
 PROPOSED IMPROVEMENTS IN PRIVATE  
 PROPERTY SHOWN FOR REFERENCE  
 ONLY. NOT PART OF THIS PROJECT.

POINT	STATION AND OFFSET	ELEVATION
A-1	12+01.42, -21.39LT	855.75*
A-2	12+19.88, -20.54LT	855.53*
A-3	12+33.28, -20.46LT	855.87*
A-4	12+01.23, -9.95LT	855.40*
A-5	12+18.55, -9.68LT	855.52*
A-6	12+33.15, -9.40LT	855.56*

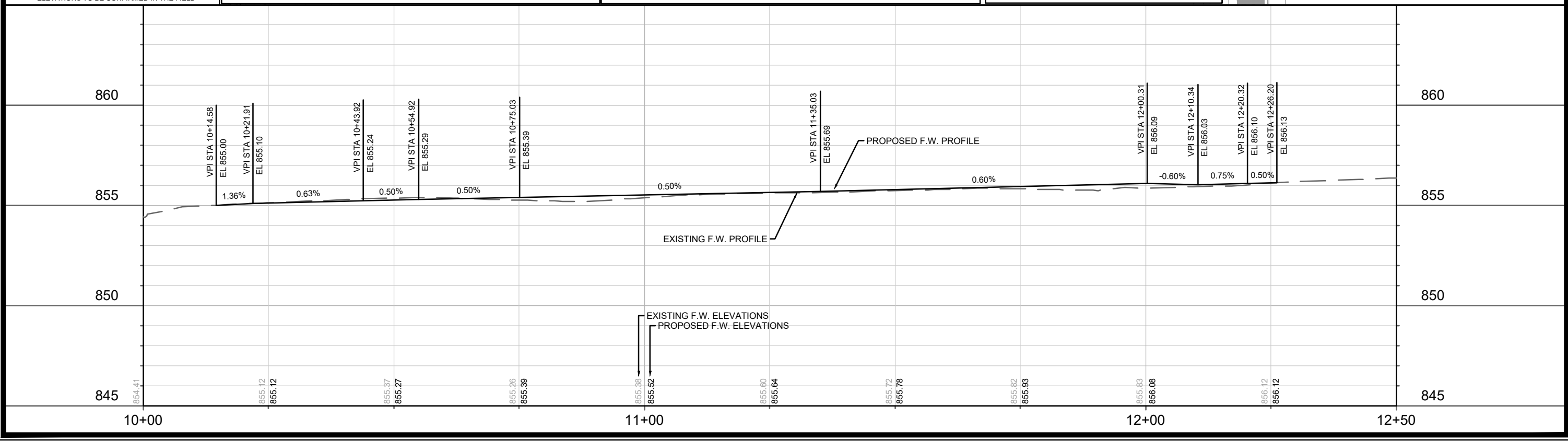
\* ELEVATIONS TO BE CONFIRMED IN THE FIELD

- NOTES:
- 5" CONCRETE SIDEWALK
  - REMOVE CONCRETE
  - REMOVE AND REPLACE CONCRETE CURB AND GUTTER TYPE 'A'. LIMITS SHALL BE DETERMINED ON-SITE BY CONSTRUCTION ENGINEER.
  - EXISTING CURB AND GUTTER TYPE 'A' TO REMAIN
  - IN LOCATIONS WHERE PAVEMENT RESTORATION IS NOT IDENTIFIED ADJACENT TO CURB AND GUTTER REPLACEMENT ITS ASSUMED THAT CURB AND GUTTER WILL BE REPLACED WITHOUT DAMAGING ADJACENT PAVEMENT. IF DAMAGED, PAVEMENT RESTORATION LIMITS SHALL BE EXTENDED BY THE CITY CONSTRUCTION ENGINEER AS NECESSARY TO MEET THE STANDARD PATCHING CRITERIA.
  - SEE COMMERCIAL DRIVEWAY PERMIT LNDUSE-2023-00015  
 M:\DESIGN\Traffic\Maps\_Plans\ParkingLotPlans\TE\Johnson St W 437 to 449
  - DEVELOPER SHALL COORDINATE RELOCATION OR ADJUSTMENT OF PRIVATE UTILITY INFRASTRUCTURE

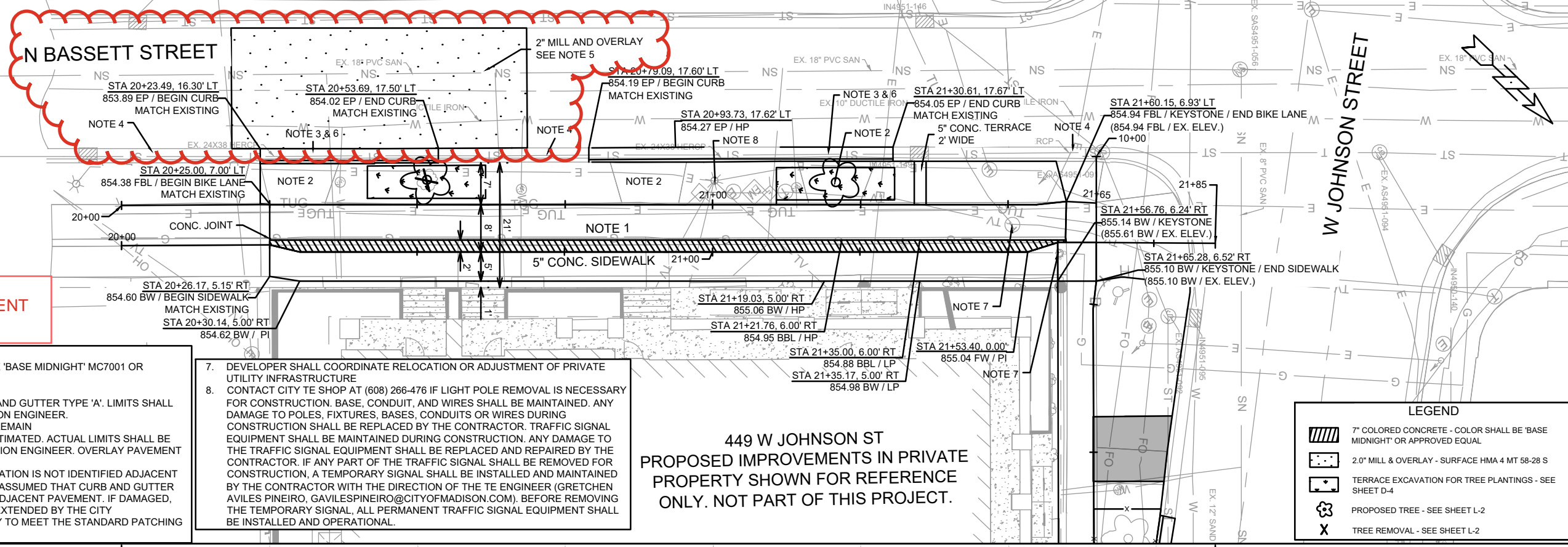
- CONTACT CITY TE SHOP AT (608) 266-476 IF LIGHT POLE REMOVAL IS NECESSARY FOR CONSTRUCTION. BASE, CONDUIT, AND WIRES SHALL BE MAINTAINED. ANY DAMAGE TO POLES, FIXTURES, BASES, CONDUITS OR WIRES DURING CONSTRUCTION SHALL BE REPLACED BY THE CONTRACTOR. TRAFFIC SIGNAL EQUIPMENT SHALL BE MAINTAINED DURING CONSTRUCTION. ANY DAMAGE TO THE TRAFFIC SIGNAL EQUIPMENT SHALL BE REPLACED AND REPAIRED BY THE CONTRACTOR. IF ANY PART OF THE TRAFFIC SIGNAL SHALL BE REMOVED FOR CONSTRUCTION, A TEMPORARY SIGNAL SHALL BE INSTALLED AND MAINTAINED BY THE CONTRACTOR WITH THE DIRECTION OF THE TE ENGINEER (GRETCHEN AVILES PINEIRO, GAVILESPINEIRO@CITYOFMADISON.COM). BEFORE REMOVING THE TEMPORARY SIGNAL, ALL PERMANENT TRAFFIC SIGNAL EQUIPMENT SHALL BE INSTALLED AND OPERATIONAL.

**LEGEND**

- 7' CONCRETE BUS PAD AND TERRACE
- 10' CONCRETE PAVEMENT
- SAWCUT PAVEMENT LIMITS
- TREE PROTECTION - SEE SHEET L-1
- TREE REMOVAL - SEE SHEET L-1



15030	MADISON, WI	9499	15030
PLAN AND PROFILE - W JOHNSON ST		CONTRACT NO.:	
449 W JOHNSON ST			
M:\DESIGN\Projects\15030\CAD\Streets\15030EN-PnP.dwg			
15030		P-1	



**REV 1 - 12/11/2024**  
 - UPDATED CURB REPLACEMENT  
 AND MILL & OVERLAY LIMITS

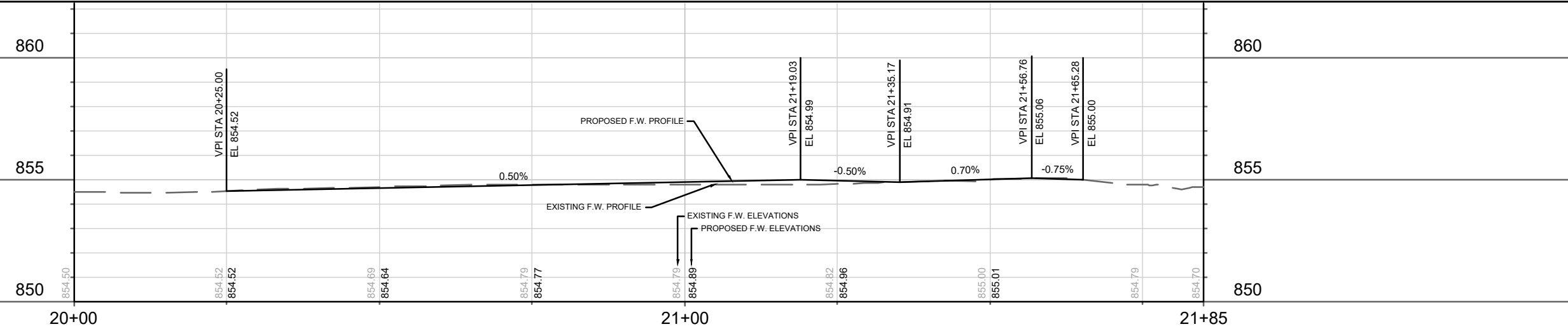
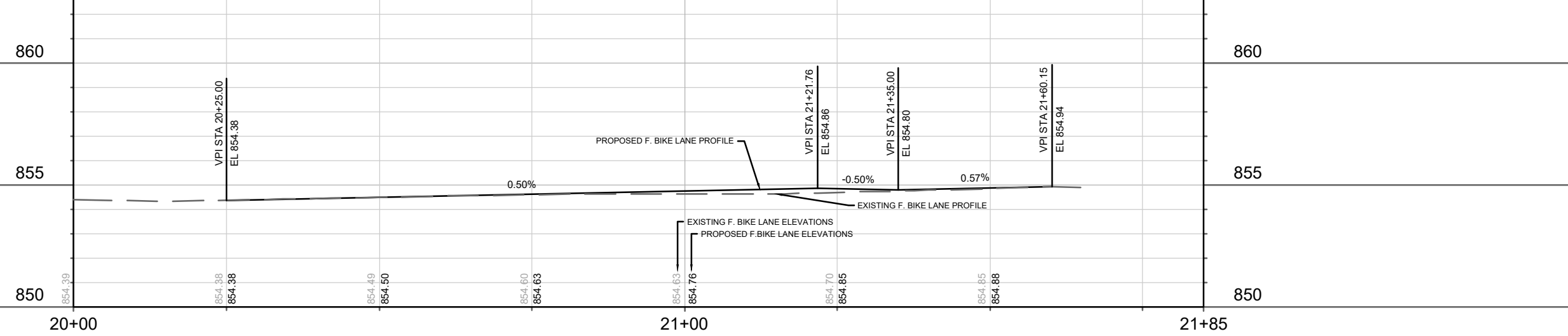
**NOTES:**

- 7" CONCRETE BIKE PATH. COLOR SHALL BE 'BASE MIDNIGHT' MC7001 OR APPROVED EQUAL
- REMOVE CONCRETE
- REMOVE AND REPLACE CONCRETE CURB AND GUTTER TYPE 'A'. LIMITS SHALL BE DETERMINED ON-SITE BY CONSTRUCTION ENGINEER.
- EXISTING CURB AND GUTTER TYPE 'A' TO REMAIN
- MILL AND OVERLAY LIMITS SHOWN ARE ESTIMATED. ACTUAL LIMITS SHALL BE DETERMINED ON-SITE BY THE CONSTRUCTION ENGINEER. OVERLAY PAVEMENT MIX SHALL BE 4 MT 58-28 S.
- IN LOCATIONS WHERE PAVEMENT RESTORATION IS NOT IDENTIFIED ADJACENT TO CURB AND GUTTER REPLACEMENT ITS ASSUMED THAT CURB AND GUTTER WILL BE REPLACED WITHOUT DAMAGING ADJACENT PAVEMENT. IF DAMAGED, THE MILL AND OVERLAY LIMITS SHALL BE EXTENDED BY THE CITY CONSTRUCTION ENGINEER AS NECESSARY TO MEET THE STANDARD PATCHING CRITERIA.

- DEVELOPER SHALL COORDINATE RELOCATION OR ADJUSTMENT OF PRIVATE UTILITY INFRASTRUCTURE
- CONTACT CITY TE SHOP AT (608) 266-476 IF LIGHT POLE REMOVAL IS NECESSARY FOR CONSTRUCTION. BASE, CONDUIT, AND WIRES SHALL BE MAINTAINED. ANY DAMAGE TO POLES, FIXTURES, BASES, CONDUITS OR WIRES DURING CONSTRUCTION SHALL BE REPLACED BY THE CONTRACTOR. TRAFFIC SIGNAL EQUIPMENT SHALL BE MAINTAINED DURING CONSTRUCTION. ANY DAMAGE TO THE TRAFFIC SIGNAL EQUIPMENT SHALL BE REPLACED AND REPAIRED BY THE CONTRACTOR. IF ANY PART OF THE TRAFFIC SIGNAL SHALL BE REMOVED FOR CONSTRUCTION, A TEMPORARY SIGNAL SHALL BE INSTALLED AND MAINTAINED BY THE CONTRACTOR WITH THE DIRECTION OF THE TE ENGINEER (GRETCHEN AVILES PINEIRO, GAVILESPINEIRO@CITYOFMADISON.COM). BEFORE REMOVING THE TEMPORARY SIGNAL, ALL PERMANENT TRAFFIC SIGNAL EQUIPMENT SHALL BE INSTALLED AND OPERATIONAL.

**LEGEND**

- 7" COLORED CONCRETE - COLOR SHALL BE 'BASE MIDNIGHT' OR APPROVED EQUAL
- 2.0" MILL & OVERLAY - SURFACE HMA 4 MT 58-28 S
- TERRACE EXCAVATION FOR TREE PLANTINGS - SEE SHEET D-4
- PROPOSED TREE - SEE SHEET L-2
- TREE REMOVAL - SEE SHEET L-2

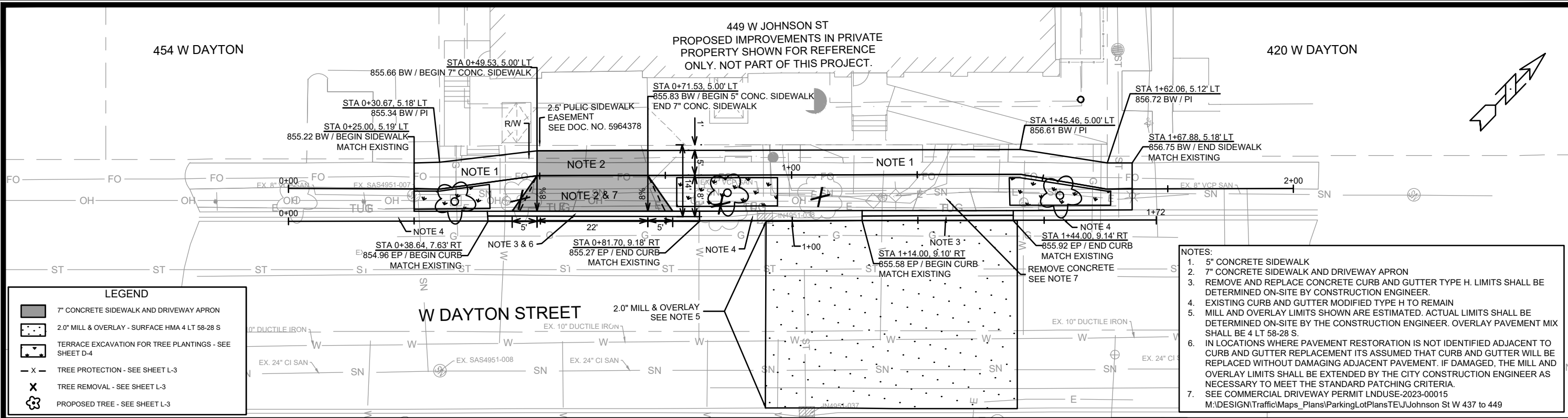


15030	MADISON, WI	9499	15030								
PLAN AND PROFILE - N BASSETT ST		CONTRACT NO.:									
449 W JOHNSON ST		P-2									
M:\DESIGN\Projects\15030\CAD\Streets\15030EN-PnP.dwg											
<table border="1"> <tr> <th>REV</th> <th>DATE</th> <th>BY</th> <th>DESCRIPTION</th> </tr> <tr> <td>1</td> <td>12/11/24</td> <td>GIT</td> <td>UPDATED C&amp;G AND MILL &amp; OVERLAY</td> </tr> </table>				REV	DATE	BY	DESCRIPTION	1	12/11/24	GIT	UPDATED C&G AND MILL & OVERLAY
REV	DATE	BY	DESCRIPTION								
1	12/11/24	GIT	UPDATED C&G AND MILL & OVERLAY								
<table border="1"> <tr> <td>15030</td> <td>12/11/24</td> <td>GIT</td> <td>15030</td> </tr> <tr> <td>15030</td> <td>12/11/24</td> <td>GIT</td> <td>15030</td> </tr> </table>				15030	12/11/24	GIT	15030	15030	12/11/24	GIT	15030
15030	12/11/24	GIT	15030								
15030	12/11/24	GIT	15030								

454 W DAYTON

420 W DAYTON

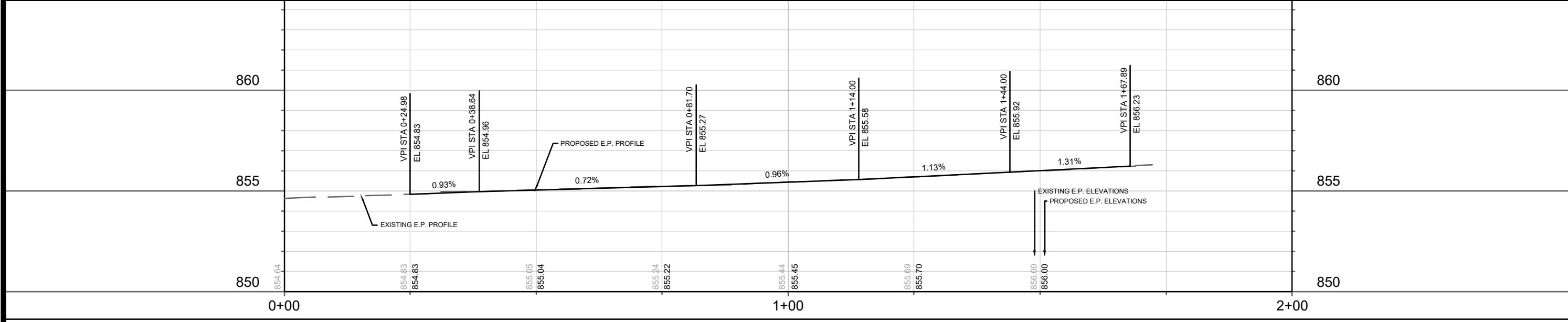
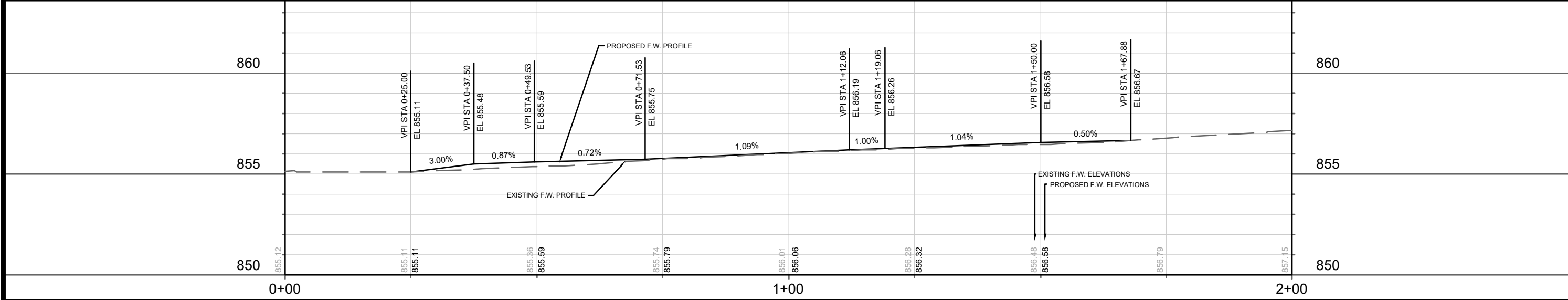
449 W JOHNSON ST  
PROPOSED IMPROVEMENTS IN PRIVATE  
PROPERTY SHOWN FOR REFERENCE  
ONLY. NOT PART OF THIS PROJECT.



**LEGEND**

- 7" CONCRETE SIDEWALK AND DRIVEWAY APRON
- 2.0" MILL & OVERLAY - SURFACE HMA 4 LT 58-28 S
- TERRACE EXCAVATION FOR TREE PLANTINGS - SEE SHEET D-4
- TREE PROTECTION - SEE SHEET L-3
- TREE REMOVAL - SEE SHEET L-3
- PROPOSED TREE - SEE SHEET L-3

- NOTES:**
1. 5" CONCRETE SIDEWALK
  2. 7" CONCRETE SIDEWALK AND DRIVEWAY APRON
  3. REMOVE AND REPLACE CONCRETE CURB AND GUTTER TYPE H. LIMITS SHALL BE DETERMINED ON-SITE BY CONSTRUCTION ENGINEER.
  4. EXISTING CURB AND GUTTER MODIFIED TYPE H TO REMAIN
  5. MILL AND OVERLAY LIMITS SHOWN ARE ESTIMATED. ACTUAL LIMITS SHALL BE DETERMINED ON-SITE BY THE CONSTRUCTION ENGINEER. OVERLAY PAVEMENT MIX SHALL BE 4 LT 58-28 S.
  6. IN LOCATIONS WHERE PAVEMENT RESTORATION IS NOT IDENTIFIED ADJACENT TO CURB AND GUTTER REPLACEMENT ITS ASSUMED THAT CURB AND GUTTER WILL BE REPLACED WITHOUT DAMAGING ADJACENT PAVEMENT. IF DAMAGED, THE MILL AND OVERLAY LIMITS SHALL BE EXTENDED BY THE CITY CONSTRUCTION ENGINEER AS NECESSARY TO MEET THE STANDARD PATCHING CRITERIA.
  7. SEE COMMERCIAL DRIVEWAY PERMIT LNDUSE-2023-00015  
M:\DESIGN\TrafficMaps\_Plans\ParkingLotPlans\TE\Johnson St W 437 to 449



DATE	BT
REVISION	
MARK	
Designated By: GCIT	Date: 9/12/2024 3:37 PM
Scale:	1:20
15030	P-3

15030  
MADISON, WI  
9499  
CONTRACT NO:

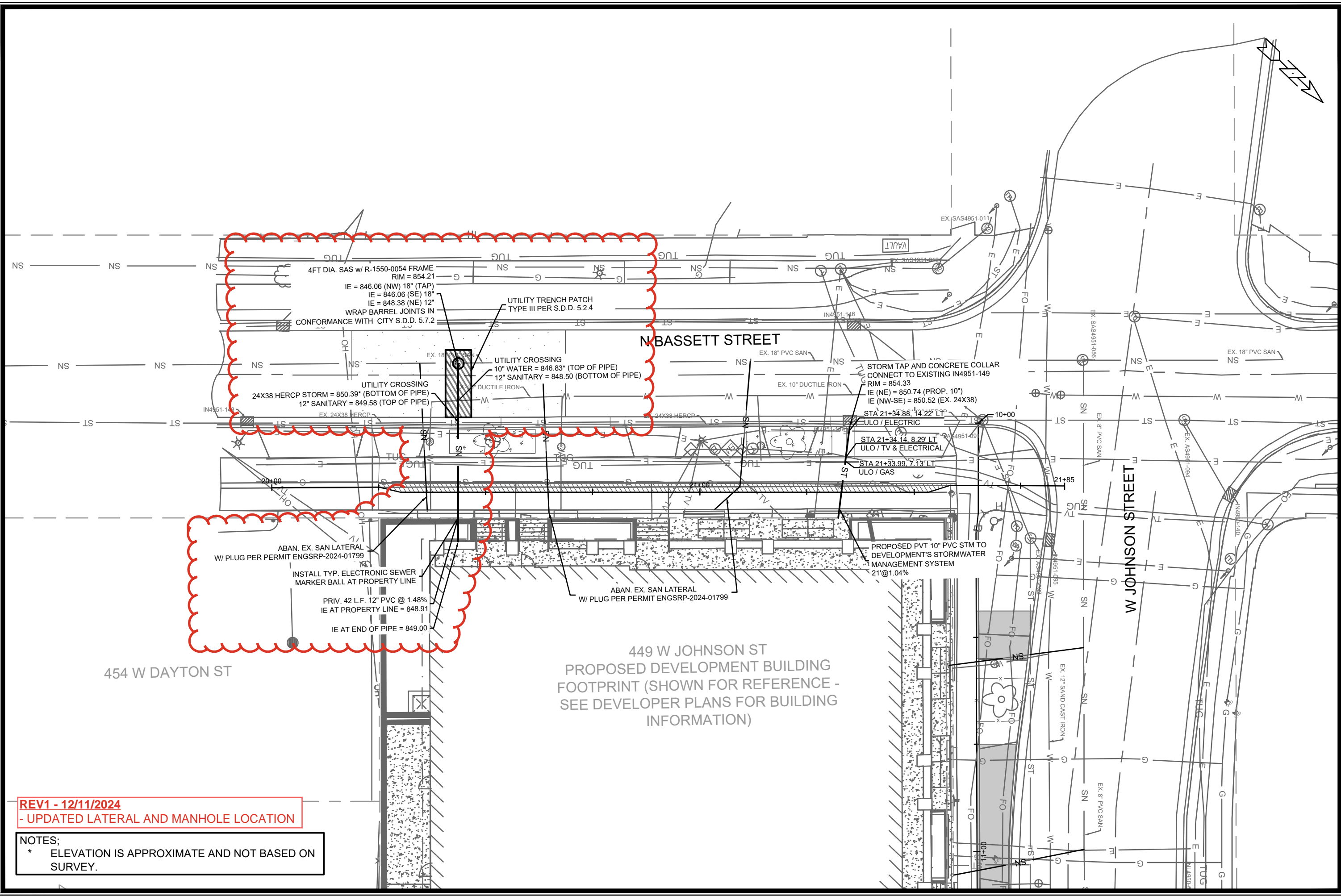
PLAN AND PROFILE - W DAYTON ST

449 W JOHNSON ST  
M:\DESIGN\Projects\15030\CAD\Streets\15030EN-PnP.dwg  
15030  
P-3









**REV1 - 12/11/2024**  
- UPDATED LATERAL AND MANHOLE LOCATION


NOTES:  
\* ELEVATION IS APPROXIMATE AND NOT BASED ON SURVEY.

NO.	DATE	BY	REVISION
1	12/11/24	GIT	UPDATED LOCATION OF SAN LATERAL
2		BT	

Designated By: GCIT Date: 12/11/2024 8:20 AM Scale: 1:20  
15030 U-2

15030  
MADISON, WI  
9499  
CONTRACT NO.:

UTILITIES PLAN - N BASSETT STREET  
449 W JOHNSON ST  
M:\DESIGN\Projects\15030\CAD\Sewers\15030SWR-PnP.dwg

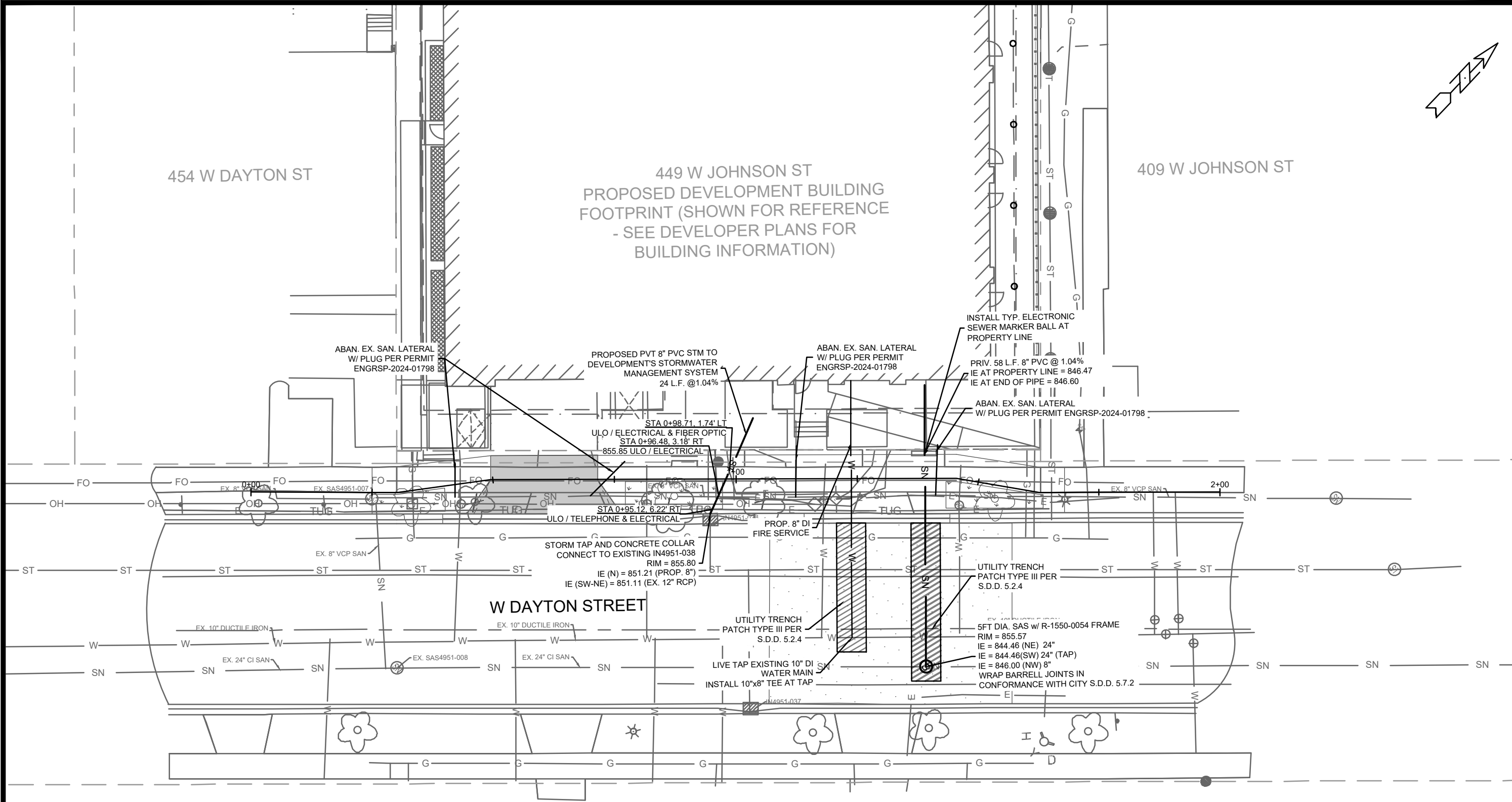
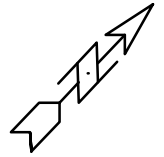


15030  
U-2

454 W DAYTON ST

449 W JOHNSON ST  
PROPOSED DEVELOPMENT BUILDING  
FOOTPRINT (SHOWN FOR REFERENCE  
- SEE DEVELOPER PLANS FOR  
BUILDING INFORMATION)

409 W JOHNSON ST



MARK	REVISION	DATE	BY
15030			
Designated By: ##	Date: 10/08/2024 11:22 AM	Scale: 1:20	U-3

15030  
MADISON, WI  
9499  
CONTRACT NO:

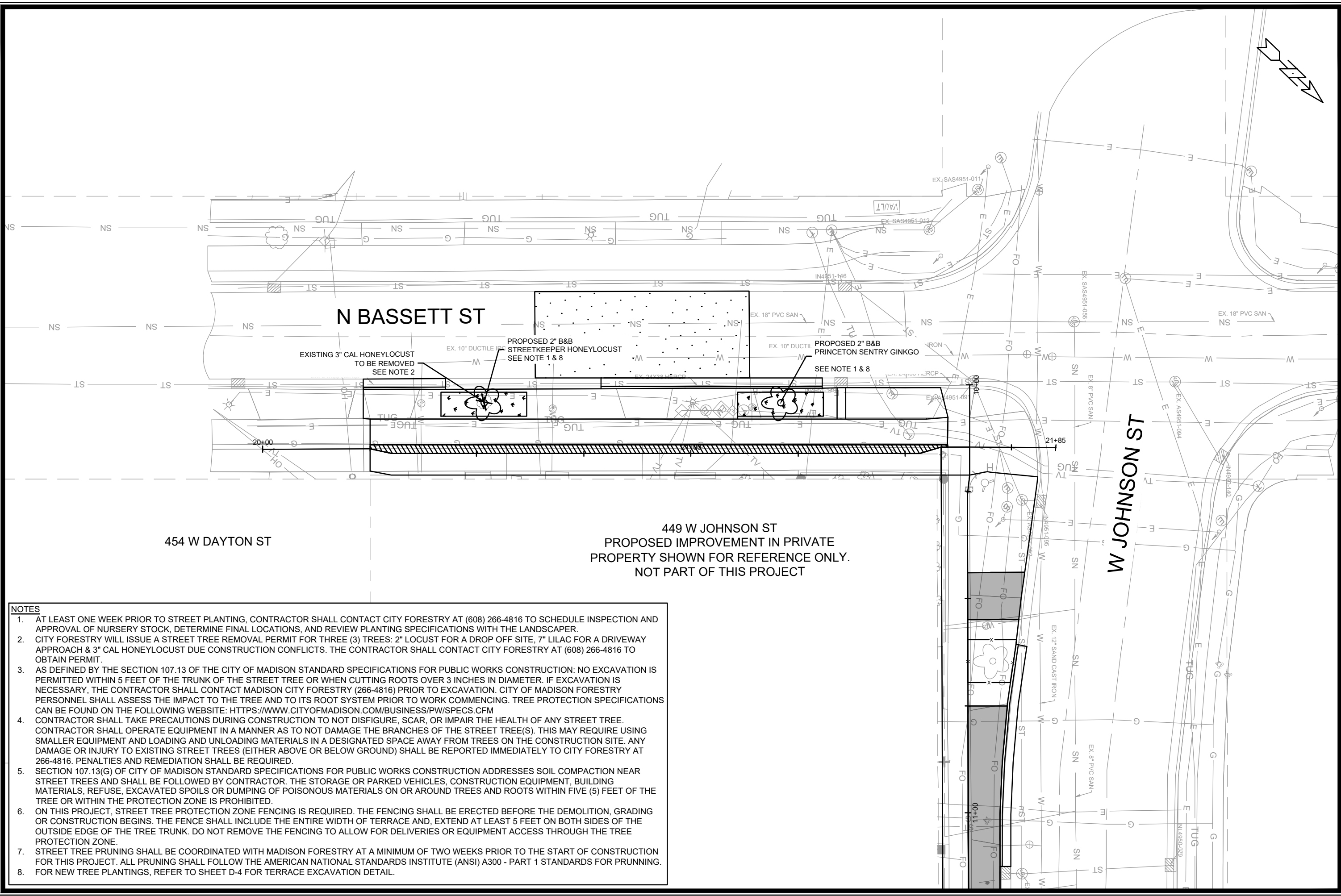
UTILITIES PLAN - W DAYTON STREET  
449 W JOHNSON ST  
M:\DESIGN\Projects\15030\CAD\Sewers\15030SWR-PnP.dwg



15030  
U-3







N BASSETT ST

W JOHNSON ST

454 W DAYTON ST


449 W JOHNSON ST  
 PROPOSED IMPROVEMENT IN PRIVATE  
 PROPERTY SHOWN FOR REFERENCE ONLY.  
 NOT PART OF THIS PROJECT

- NOTES**
1. AT LEAST ONE WEEK PRIOR TO STREET PLANTING, CONTRACTOR SHALL CONTACT CITY FORESTRY AT (608) 266-4816 TO SCHEDULE INSPECTION AND APPROVAL OF NURSERY STOCK, DETERMINE FINAL LOCATIONS, AND REVIEW PLANTING SPECIFICATIONS WITH THE LANDSCAPER.
  2. CITY FORESTRY WILL ISSUE A STREET TREE REMOVAL PERMIT FOR THREE (3) TREES: 2" LOCUST FOR A DROP OFF SITE, 7" LILAC FOR A DRIVEWAY APPROACH & 3" CAL HONEYLOCUST DUE CONSTRUCTION CONFLICTS. THE CONTRACTOR SHALL CONTACT CITY FORESTRY AT (608) 266-4816 TO OBTAIN PERMIT.
  3. AS DEFINED BY THE SECTION 107.13 OF THE CITY OF MADISON STANDARD SPECIFICATIONS FOR PUBLIC WORKS CONSTRUCTION: NO EXCAVATION IS PERMITTED WITHIN 5 FEET OF THE TRUNK OF THE STREET TREE OR WHEN CUTTING ROOTS OVER 3 INCHES IN DIAMETER. IF EXCAVATION IS NECESSARY, THE CONTRACTOR SHALL CONTACT MADISON CITY FORESTRY (266-4816) PRIOR TO EXCAVATION. CITY OF MADISON FORESTRY PERSONNEL SHALL ASSESS THE IMPACT TO THE TREE AND TO ITS ROOT SYSTEM PRIOR TO WORK COMMENCING. TREE PROTECTION SPECIFICATIONS CAN BE FOUND ON THE FOLLOWING WEBSITE: [HTTPS://WWW.CITYOFMADISON.COM/BUSINESS/PW/SPECS.CFM](https://www.cityofmadison.com/business/pw/specs.cfm)
  4. CONTRACTOR SHALL TAKE PRECAUTIONS DURING CONSTRUCTION TO NOT DISFIGURE, SCAR, OR IMPAIR THE HEALTH OF ANY STREET TREE. CONTRACTOR SHALL OPERATE EQUIPMENT IN A MANNER AS TO NOT DAMAGE THE BRANCHES OF THE STREET TREE(S). THIS MAY REQUIRE USING SMALLER EQUIPMENT AND LOADING AND UNLOADING MATERIALS IN A DESIGNATED SPACE AWAY FROM TREES ON THE CONSTRUCTION SITE. ANY DAMAGE OR INJURY TO EXISTING STREET TREES (EITHER ABOVE OR BELOW GROUND) SHALL BE REPORTED IMMEDIATELY TO CITY FORESTRY AT 266-4816. PENALTIES AND REMEDIATION SHALL BE REQUIRED.
  5. SECTION 107.13(G) OF CITY OF MADISON STANDARD SPECIFICATIONS FOR PUBLIC WORKS CONSTRUCTION ADDRESSES SOIL COMPACTION NEAR STREET TREES AND SHALL BE FOLLOWED BY CONTRACTOR. THE STORAGE OR PARKED VEHICLES, CONSTRUCTION EQUIPMENT, BUILDING MATERIALS, REFUSE, EXCAVATED SPOILS OR DUMPING OF POISONOUS MATERIALS ON OR AROUND TREES AND ROOTS WITHIN FIVE (5) FEET OF THE TREE OR WITHIN THE PROTECTION ZONE IS PROHIBITED.
  6. ON THIS PROJECT, STREET TREE PROTECTION ZONE FENCING IS REQUIRED. THE FENCING SHALL BE ERECTED BEFORE THE DEMOLITION, GRADING OR CONSTRUCTION BEGINS. THE FENCE SHALL INCLUDE THE ENTIRE WIDTH OF TERRACE AND, EXTEND AT LEAST 5 FEET ON BOTH SIDES OF THE OUTSIDE EDGE OF THE TREE TRUNK. DO NOT REMOVE THE FENCING TO ALLOW FOR DELIVERIES OR EQUIPMENT ACCESS THROUGH THE TREE PROTECTION ZONE.
  7. STREET TREE PRUNING SHALL BE COORDINATED WITH MADISON FORESTRY AT A MINIMUM OF TWO WEEKS PRIOR TO THE START OF CONSTRUCTION FOR THIS PROJECT. ALL PRUNING SHALL FOLLOW THE AMERICAN NATIONAL STANDARDS INSTITUTE (ANSI) A300 - PART 1 STANDARDS FOR PRUNNING.
  8. FOR NEW TREE PLANTINGS, REFER TO SHEET D-4 FOR TERRACE EXCAVATION DETAIL.

MARK	REVISION	DATE	BY
15030	9/27/2024	3:23 PM	L-2

15030  
 MADISON, WI  
 9499  
 CONTRACT NO:

LANDSCAPING PLAN - N BASSETT ST  
 449 W JOHNSON ST  
 M:\DESIGN\Projects\15030\CAD\Streets\15030EN\LandscapingPlan.dwg

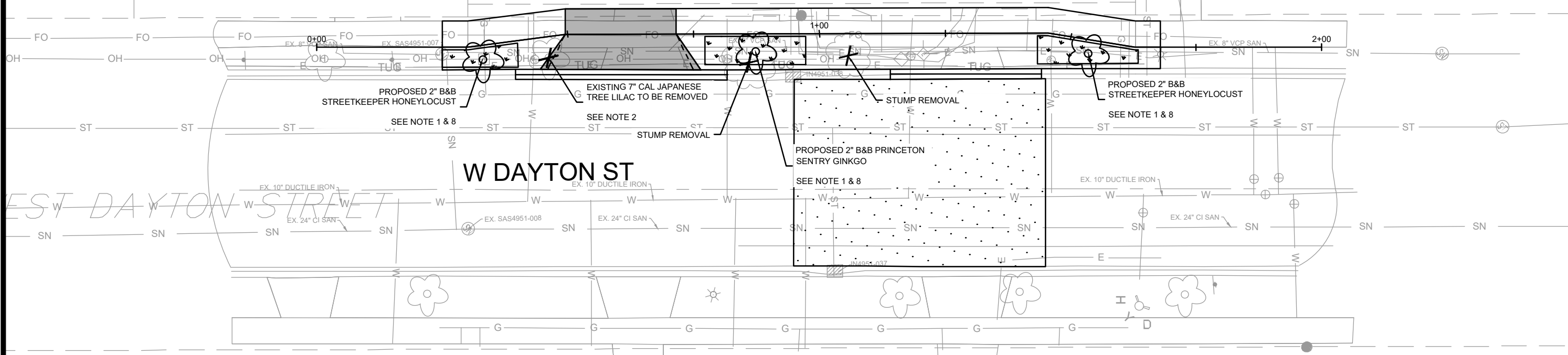
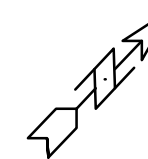


15030  
 L-2

449 W JOHNSON ST  
 PROPOSED IMPROVEMENT IN PRIVATE  
 PROPERTY SHOWN FOR REFERENCE  
 ONLY. NOT PART OF THIS PROJECT

454 W DAYTON

409 W JOHNSON ST



- NOTES**
1. AT LEAST ONE WEEK PRIOR TO STREET PLANTING, CONTRACTOR SHALL CONTACT CITY FORESTRY AT (608) 266-4816 TO SCHEDULE INSPECTION AND APPROVAL OF NURSERY STOCK, DETERMINE FINAL LOCATIONS, AND REVIEW PLANTING SPECIFICATIONS WITH THE LANDSCAPER.
  2. CITY FORESTRY WILL ISSUE A STREET TREE REMOVAL PERMIT FOR THREE (3) TREES: 2" LOCUST FOR A DROP OFF SITE, 7" LILAC FOR A DRIVEWAY APPROACH & 3" CAL HONEYLOCUST DUE CONSTRUCTION CONFLICTS. THE CONTRACTOR SHALL CONTACT CITY FORESTRY AT (608) 266-4816 TO OBTAIN PERMIT.
  3. AS DEFINED BY THE SECTION 107.13 OF THE CITY OF MADISON STANDARD SPECIFICATIONS FOR PUBLIC WORKS CONSTRUCTION: NO EXCAVATION IS PERMITTED WITHIN 5 FEET OF THE TRUNK OF THE STREET TREE OR WHEN CUTTING ROOTS OVER 3 INCHES IN DIAMETER. IF EXCAVATION IS NECESSARY, THE CONTRACTOR SHALL CONTACT MADISON CITY FORESTRY (266-4816) PRIOR TO EXCAVATION. CITY OF MADISON FORESTRY PERSONNEL SHALL ASSESS THE IMPACT TO THE TREE AND TO ITS ROOT SYSTEM PRIOR TO WORK COMMENCING. TREE PROTECTION SPECIFICATIONS CAN BE FOUND ON THE FOLLOWING WEBSITE: [HTTPS://WWW.CITYOFMADISON.COM/BUSINESS/PW/SPECS.CFM](https://www.cityofmadison.com/business/pw/specs.cfm)
  4. CONTRACTOR SHALL TAKE PRECAUTIONS DURING CONSTRUCTION TO NOT DISFIGURE, SCAR, OR IMPAIR THE HEALTH OF ANY STREET TREE. CONTRACTOR SHALL OPERATE EQUIPMENT IN A MANNER AS TO NOT DAMAGE THE BRANCHES OF THE STREET TREE(S). THIS MAY REQUIRE USING SMALLER EQUIPMENT AND LOADING AND UNLOADING MATERIALS IN A DESIGNATED SPACE AWAY FROM TREES ON THE CONSTRUCTION SITE. ANY DAMAGE OR INJURY TO EXISTING STREET TREES (EITHER ABOVE OR BELOW GROUND) SHALL BE REPORTED IMMEDIATELY TO CITY FORESTRY AT 266-4816. PENALTIES AND REMEDIATION SHALL BE REQUIRED.
  5. SECTION 107.13(G) OF CITY OF MADISON STANDARD SPECIFICATIONS FOR PUBLIC WORKS CONSTRUCTION ADDRESSES SOIL COMPACTION NEAR STREET TREES AND SHALL BE FOLLOWED BY CONTRACTOR. THE STORAGE OR PARKED VEHICLES, CONSTRUCTION EQUIPMENT, BUILDING MATERIALS, REFUSE, EXCAVATED SPOILS OR DUMPING OF POISONOUS MATERIALS ON OR AROUND TREES AND ROOTS WITHIN FIVE (5) FEET OF THE TREE OR WITHIN THE PROTECTION ZONE IS PROHIBITED.
  6. ON THIS PROJECT, STREET TREE PROTECTION ZONE FENCING IS REQUIRED. THE FENCING SHALL BE ERECTED BEFORE THE DEMOLITION, GRADING OR CONSTRUCTION BEGINS. THE FENCE SHALL INCLUDE THE ENTIRE WIDTH OF TERRACE AND, EXTEND AT LEAST 5 FEET ON BOTH SIDES OF THE OUTSIDE EDGE OF THE TREE TRUNK. DO NOT REMOVE THE FENCING TO ALLOW FOR DELIVERIES OR EQUIPMENT ACCESS THROUGH THE TREE PROTECTION ZONE.
  7. STREET TREE PRUNING SHALL BE COORDINATED WITH MADISON FORESTRY AT A MINIMUM OF TWO WEEKS PRIOR TO THE START OF CONSTRUCTION FOR THIS PROJECT. ALL PRUNING SHALL FOLLOW THE AMERICAN NATIONAL STANDARDS INSTITUTE (ANSI) A300 - PART 1 STANDARDS FOR PRUNNING.
  8. FOR NEW TREE PLANTINGS, REFER TO SHEET D-4 FOR TERRACE EXCAVATION DETAIL.

DATE	BT
REVISION	DATE
DESIGNED BY: ##	DATE: 9/27/2024 3:23 PM
15030	Scale: 1:20
15030	L-3

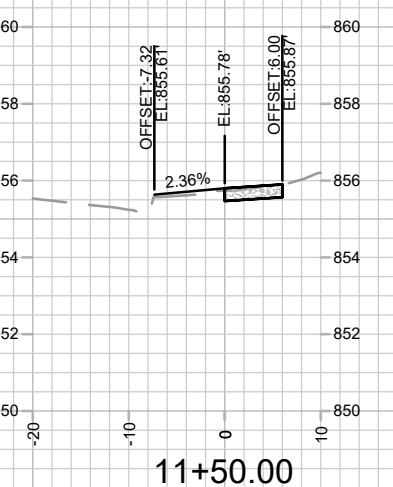
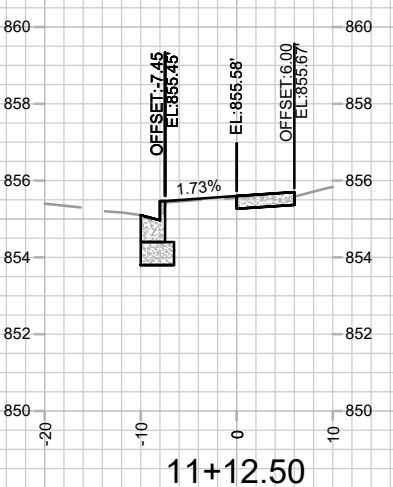
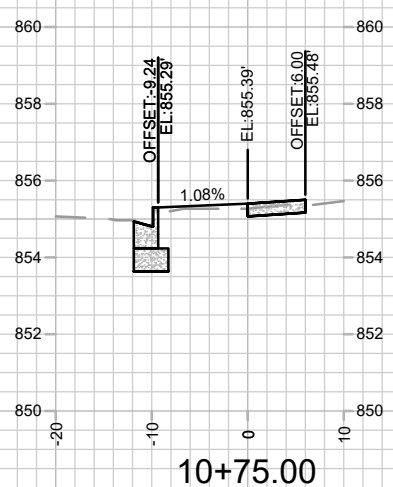
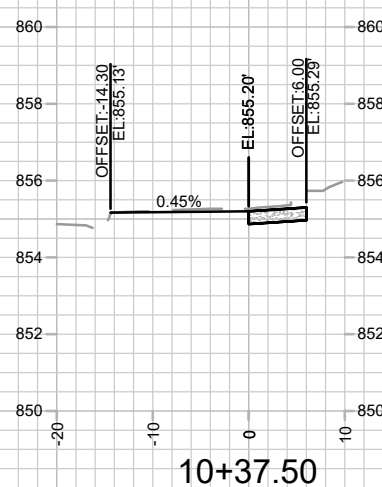
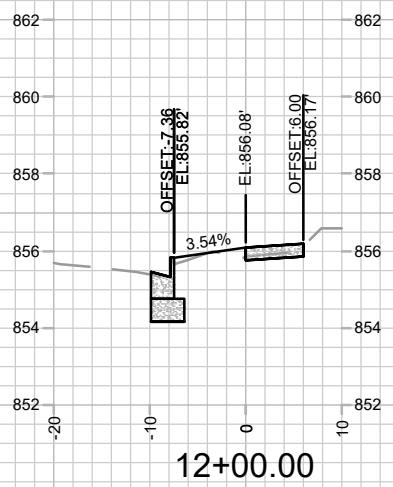
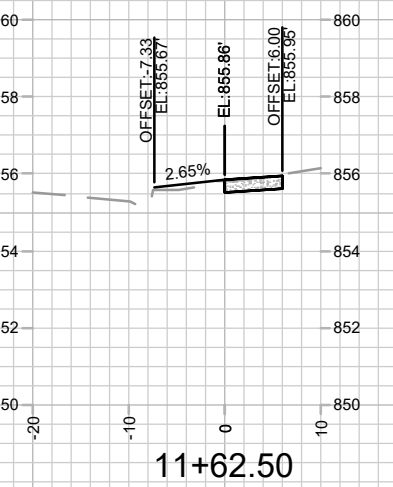
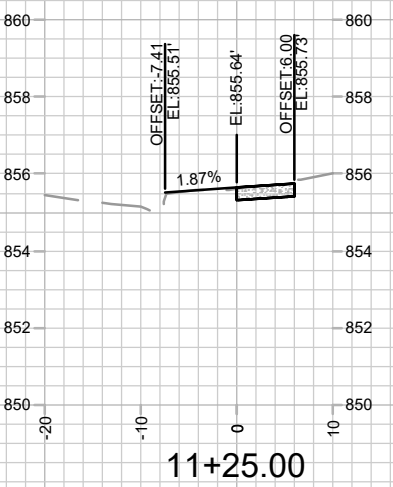
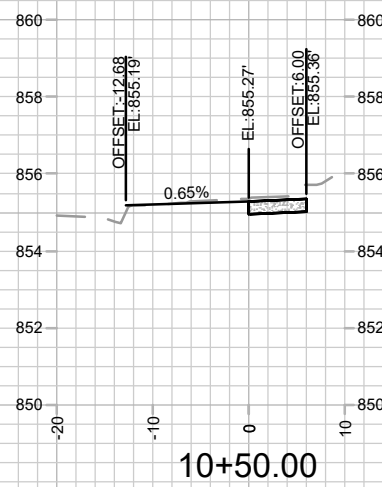
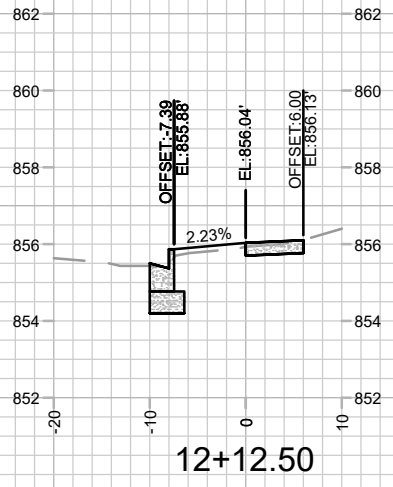
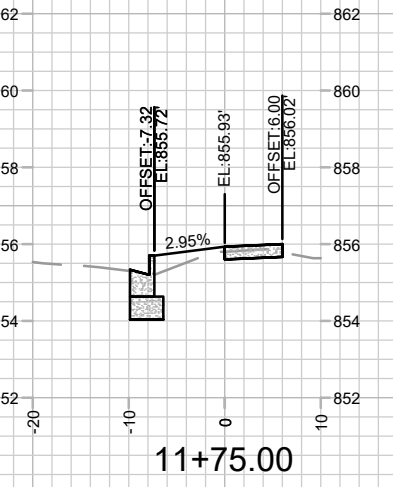
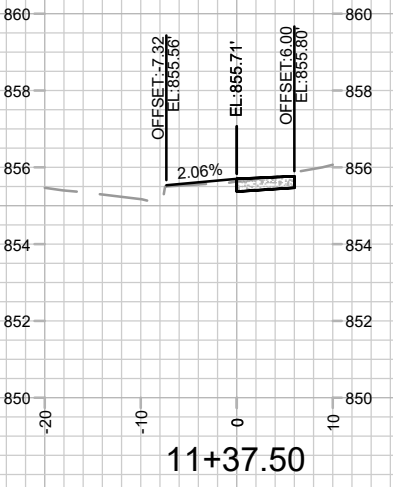
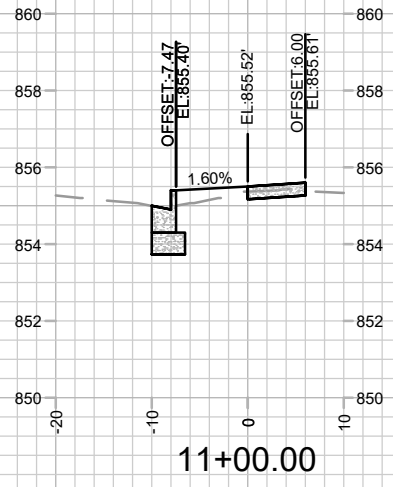
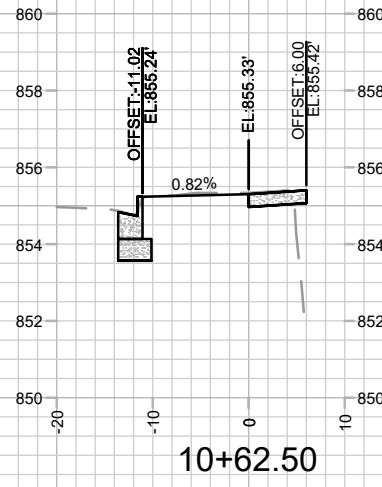
15030	15030
MADISON, WI	9499
CONTRACT NO:	

LANDSCAPING PLAN - W DAYTON ST
449 W JOHNSON ST
M:\DESIGN\Projects\15030\CAD\Streets\15030EN-LandscapingPlan.dwg

15030
L-3



MARK	REVISION	DATE	BY

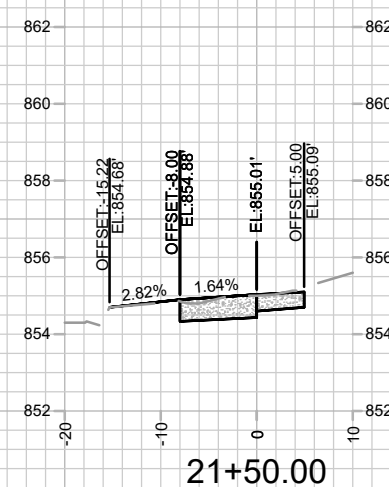
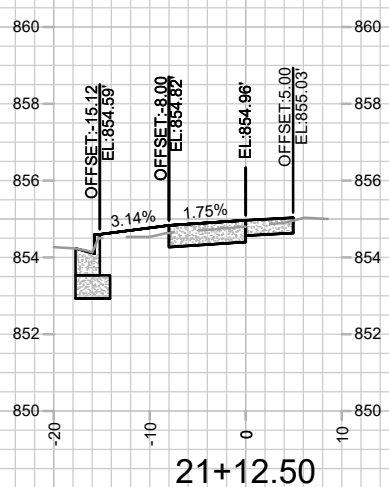
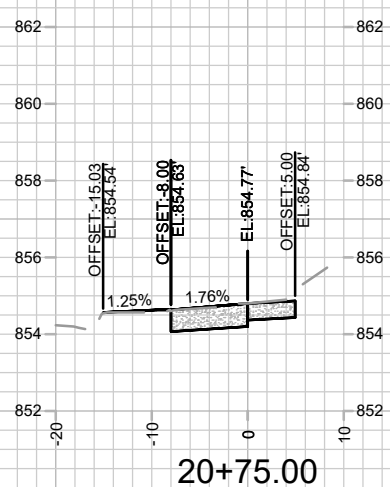
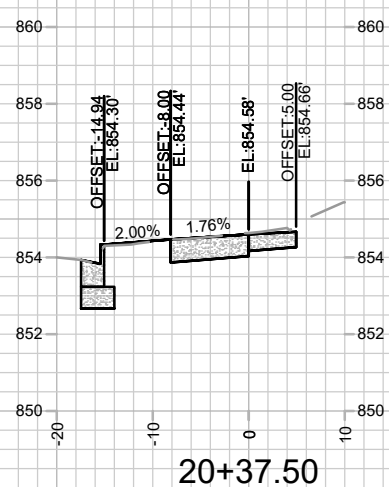
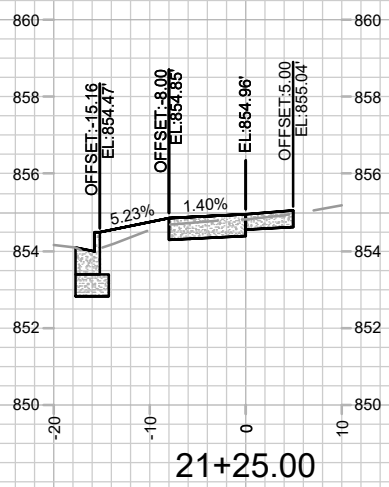
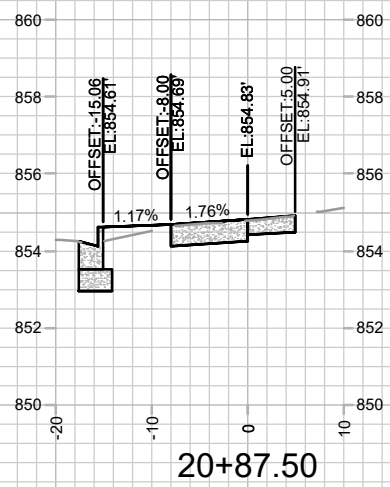
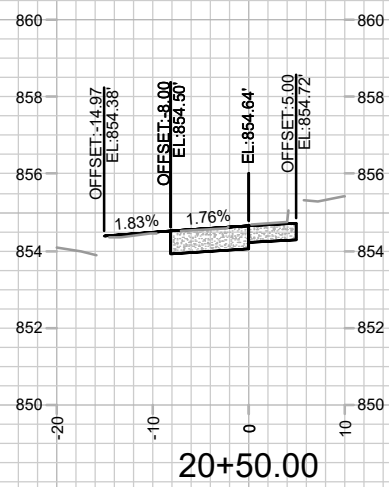
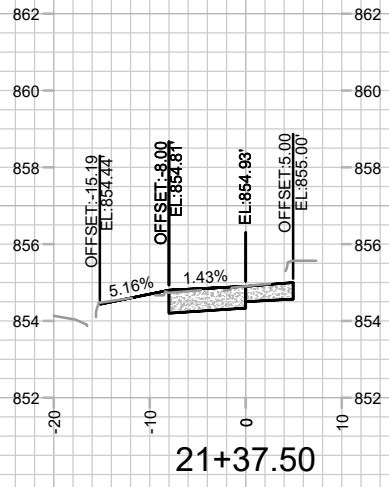
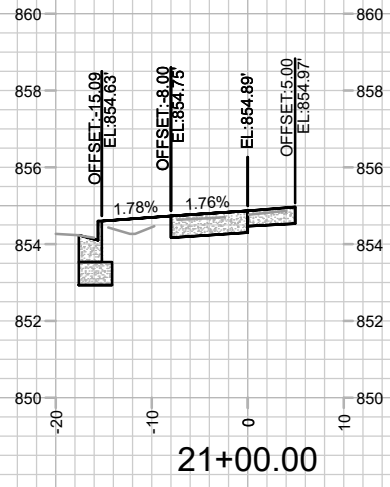
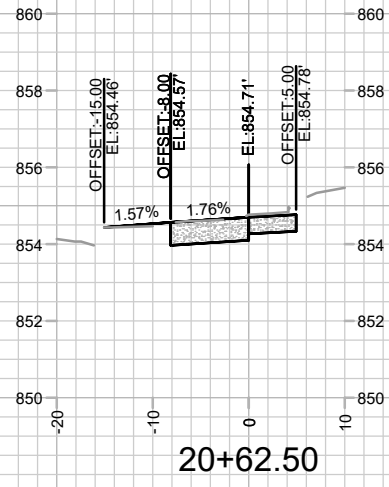
15030  
MADISON, WI  
9499  
CONTRACT NO:

CROSS SECTIONS - W JOHNSON ST  
449 W JOHNSON ST  
M:\DESIGN\Projects\15030\CAD\Streets\15030EN-Xsections.dwg



15030  
X-1





MARK	REVISION	DATE	BY

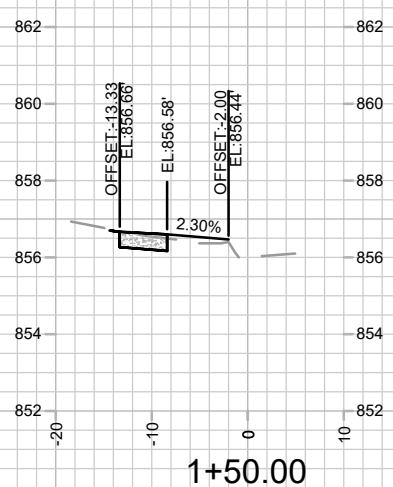
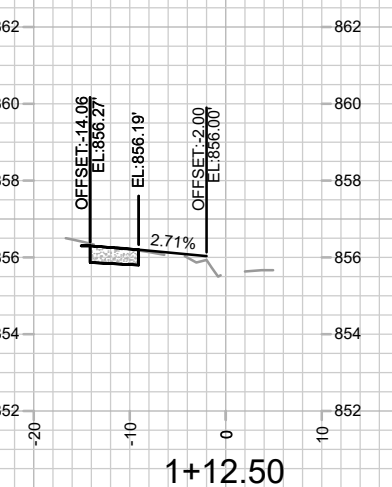
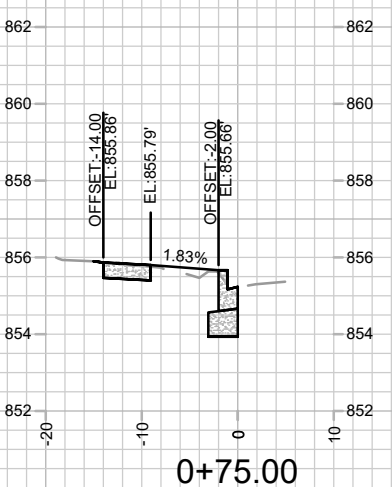
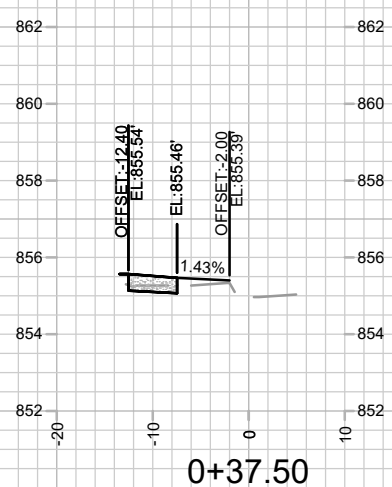
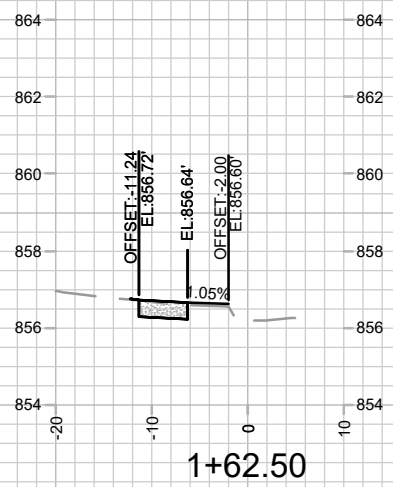
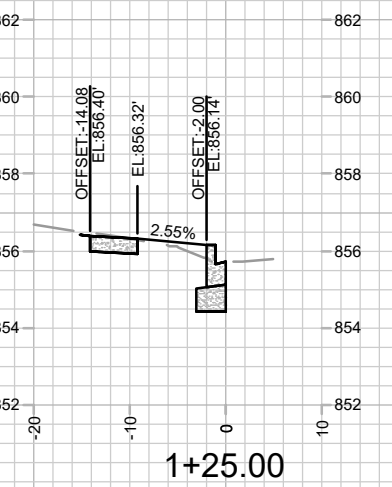
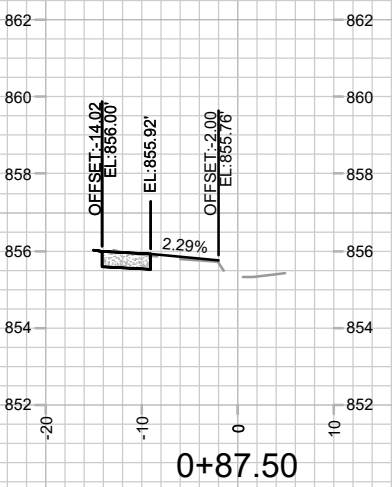
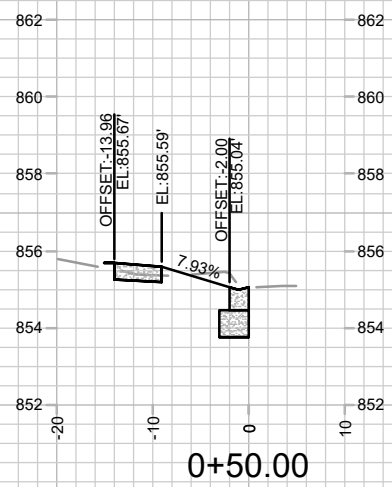
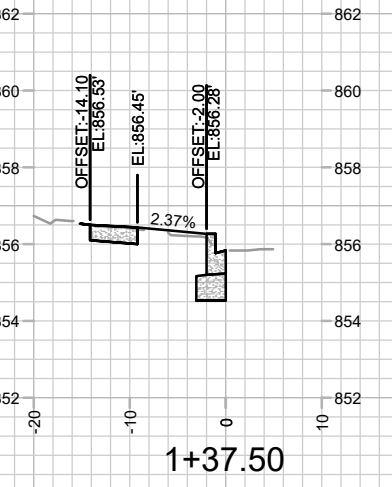
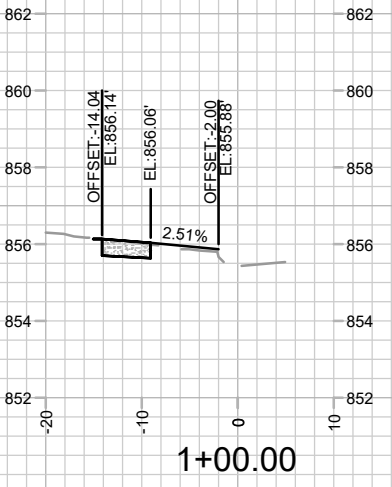
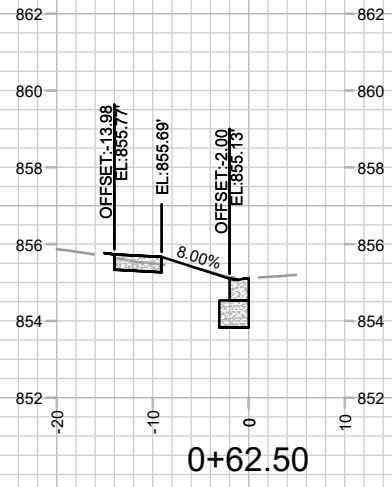
Designated By: #15030  
Date: 07/20/24 9:44 AM  
Scale: 1" = 20'  
X-2

15030  
MADISON, WI  
9499  
CONTRACT NO:

CROSS SECTIONS - N BASSETT ST  
449 W JOHNSON ST  
M:\DESIGN\Projects\15030\CAD\Streets\15030EN-Xsections.dwg



15030  
X-2



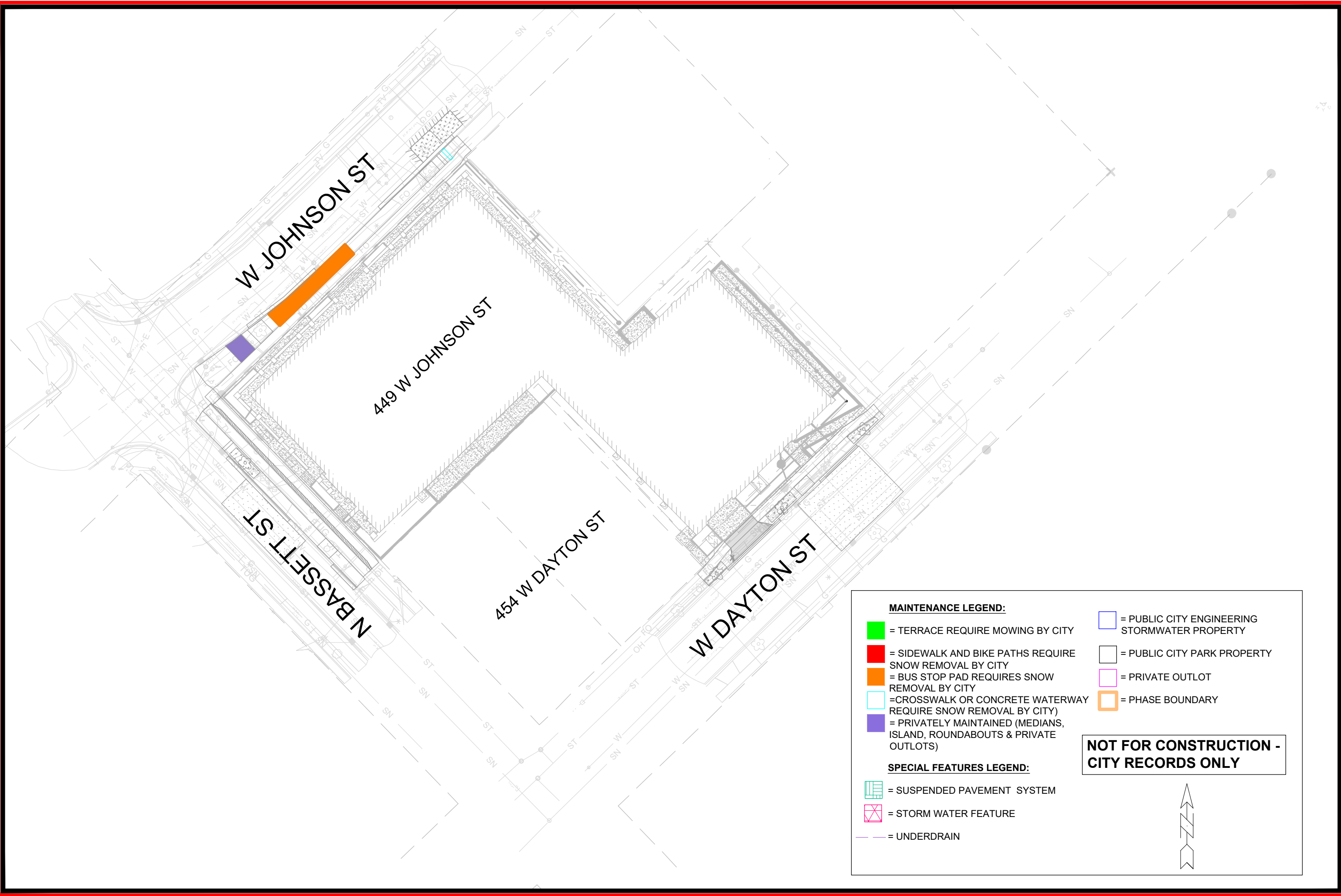
MARK	REVISION	DATE	BY

15030  
MADISON, WI  
9499  
CONTRACT NO:

CROSS SECTIONS - W DAYTON ST  
449 W JOHNSON ST  
M:\DESIGN\Projects\15030\CAD\Streets\15030EN-Xsections.dwg



15030  
X-3



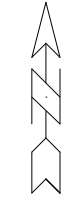
**MAINTENANCE LEGEND:**

- = TERRACE REQUIRE MOWING BY CITY
- = SIDEWALK AND BIKE PATHS REQUIRE SNOW REMOVAL BY CITY
- = BUS STOP PAD REQUIRES SNOW REMOVAL BY CITY
- = CROSSWALK OR CONCRETE WATERWAY REQUIRE SNOW REMOVAL BY CITY
- = PRIVATELY MAINTAINED (MEDIANS, ISLAND, ROUNDABOUTS & PRIVATE OUTLOTS)
- = PUBLIC CITY ENGINEERING STORMWATER PROPERTY
- = PUBLIC CITY PARK PROPERTY
- = PRIVATE OUTLOT
- = PHASE BOUNDARY

**SPECIAL FEATURES LEGEND:**

- = SUSPENDED PAVEMENT SYSTEM
- = STORM WATER FEATURE
- = UNDERDRAIN

**NOT FOR CONSTRUCTION - CITY RECORDS ONLY**



MARK	REVISION	DATE	BY

15030  
MADISON, WI  
9499  
CONTRACT NO:

15030  
MADISON, WI  
9499  
CONTRACT NO:



15030  
MN-1