



Madison, Wisconsin

# CITY OF MADISON

## CITY ENGINEERING DIVISION

### DEPARTMENT OF PUBLIC WORKS

# PLAN OF PROPOSED IMPROVEMENT

#### INDEX OF SHEETS

SHEET NO. C14-C18 UTILITY PLAN & PROFILES

## 3030 OHMEDA DRIVE CSM

CITY PROJECT NO. 13825

CONTRACT NO. ~~9802~~ 9082

Rev4 - 07-19-23 - AJZ

Revise contract #

PUBLIC IMPROVEMENT PROJECT APPROVED

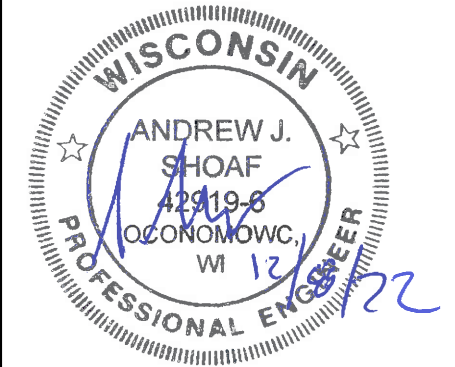
APPROVED DATE November 16, 2021

BY THE COMMON COUNCIL OF MADISON, WISCONSIN

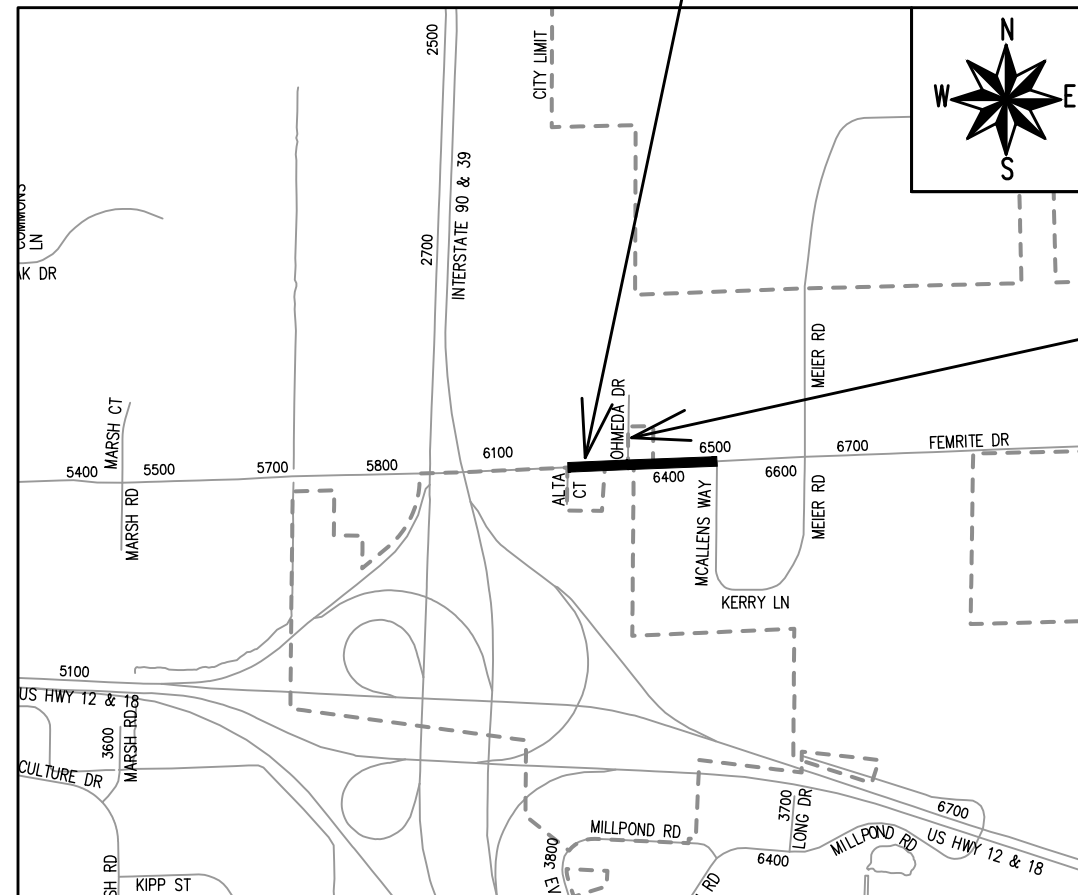
PUBLIC IMPROVEMENT DESIGN APPROVED BY:

City Engineer \_\_\_\_\_ Date \_\_\_\_\_

SANITARY SEWER DESIGNED BY:



### PROJECT LOCATION



OHMEDA DRIVE STREET PLANS (SEE PROJECT NO. 13810, CONTRACT NO. 8631)

#### CONVENTIONAL SIGNS

FIELD VERIFY ALL UTILITY LOCATIONS

- GAS — G —
- STORM SEWER — ST —
- SANITARY SEWER — SN —
- WATER — W —
- BURIED ELECTRIC — E —
- OVERHEAD ELECTRIC — OH —
- POWER POLE
- ADA COMPLIANT RAMP W/ DETECTABLE WARNING FIELD
- COMBUSTIBLE FLUIDS

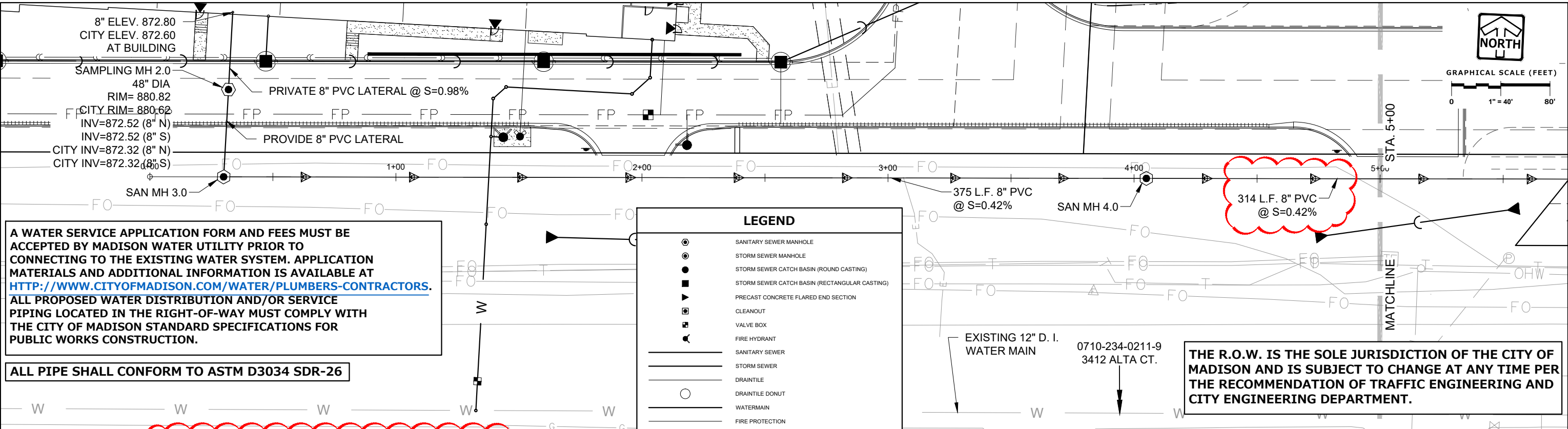
PLOT SCALE: 1 IN. = 1 FT. XREF

PLOT NAME: ---

REV. DATE: 9/1/2022 11:14 AM

ORIGINATOR: CITY\_OF\_MADISON

DRAFTED: MRC    DESIGNED: TOM    REVIEWED: TOM    THESE PLANS AND DESIGNS ARE COPYRIGHT PROTECTED AND MAY NOT BE USED IN WHOLE OR IN PART WITHOUT THE WRITTEN CONSENT OF PINNACLE ENGINEERING GROUP, LLC



**A WATER SERVICE APPLICATION FORM AND FEES MUST BE ACCEPTED BY MADISON WATER UTILITY PRIOR TO CONNECTING TO THE EXISTING WATER SYSTEM. APPLICATION MATERIALS AND ADDITIONAL INFORMATION IS AVAILABLE AT [HTTP://WWW.CITYOFMADISON.COM/WATER/PLUMBERS-CONTRACTORS](http://www.cityofmadison.com/water/plumbers-contractors). ALL PROPOSED WATER DISTRIBUTION AND/OR SERVICE PIPING LOCATED IN THE RIGHT-OF-WAY MUST COMPLY WITH THE CITY OF MADISON STANDARD SPECIFICATIONS FOR PUBLIC WORKS CONSTRUCTION.**

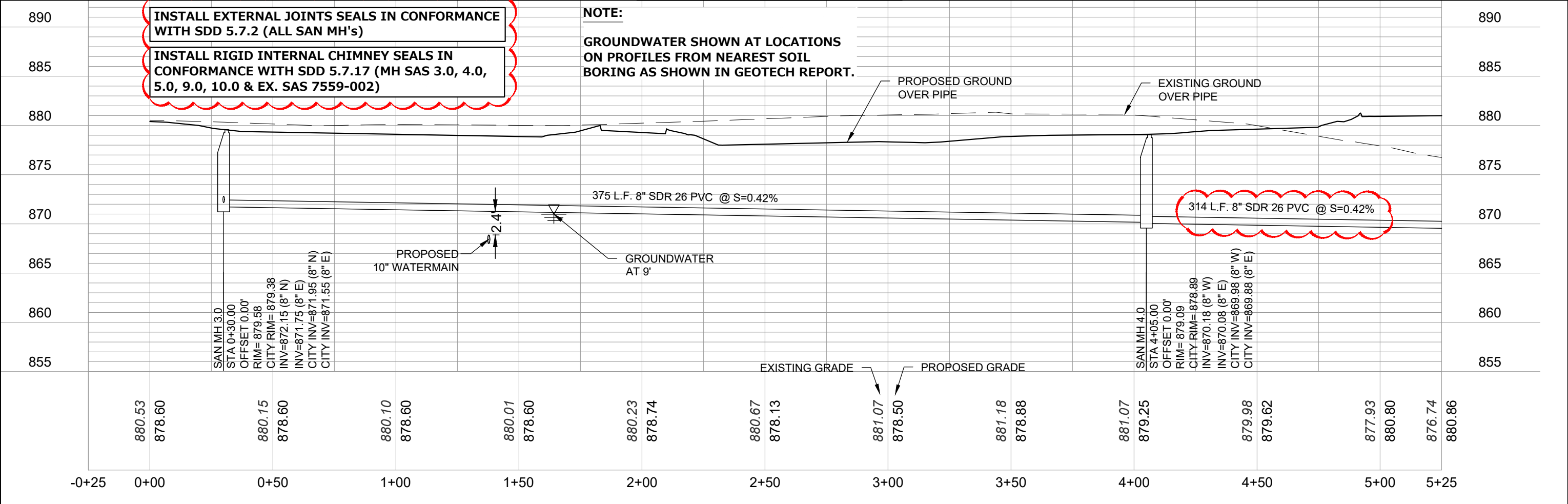
**ALL PIPE SHALL CONFORM TO ASTM D3034 SDR-26**

LEGEND	
	SANITARY SEWER MANHOLE
	STORM SEWER MANHOLE
	STORM SEWER CATCH BASIN (ROUND CASTING)
	STORM SEWER CATCH BASIN (RECTANGULAR CASTING)
	PRECAST CONCRETE FLARED END SECTION
	CLEANOUT
	VALVE BOX
	FIRE HYDRANT
	SANITARY SEWER
	STORM SEWER
	DRAIN TILE
	DRAIN TILE DONUT
	WATERMAIN
	FIRE PROTECTION

**THE R.O.W. IS THE SOLE JURISDICTION OF THE CITY OF MADISON AND IS SUBJECT TO CHANGE AT ANY TIME PER THE RECOMMENDATION OF TRAFFIC ENGINEERING AND CITY ENGINEERING DEPARTMENT.**

**INSTALL EXTERNAL JOINTS SEALS IN CONFORMANCE WITH SDD 5.7.2 (ALL SAN MH's)**  
**INSTALL RIGID INTERNAL CHIMNEY SEALS IN CONFORMANCE WITH SDD 5.7.17 (MH SAS 3.0, 4.0, 5.0, 9.0, 10.0 & EX. SAS 7559-002)**

**NOTE:**  
**GROUNDWATER SHOWN AT LOCATIONS ON PROFILES FROM NEAREST SOIL BORING AS SHOWN IN GEOTECH REPORT.**



**PINNACLE ENGINEERING GROUP**  
 ENGINEERING | NATURAL RESOURCES | SURVEYING  
 WISCONSIN OFFICE:  
 20725 WATERTOWN ROAD, SUITE 100  
 BROOKFIELD, WI 53186  
 (262) 754-8888  
 CHICAGO | MILWAUKEE | NATIONWIDE

**3030 OHMEDA DRIVE CSM**  
**MADISON, WISCONSIN**

**UTILITY PLAN**

REVISIONS	
1	CITY REVISIONS 12/08/22
2	ADD CITY DATUM INVERTS 01/20/23
3	SANITARY REALIGNMENT 05/09/23
4	MOVE SANITARY MH 5.0 07/19/23

SHEET  
**C-14**  
**C-29**

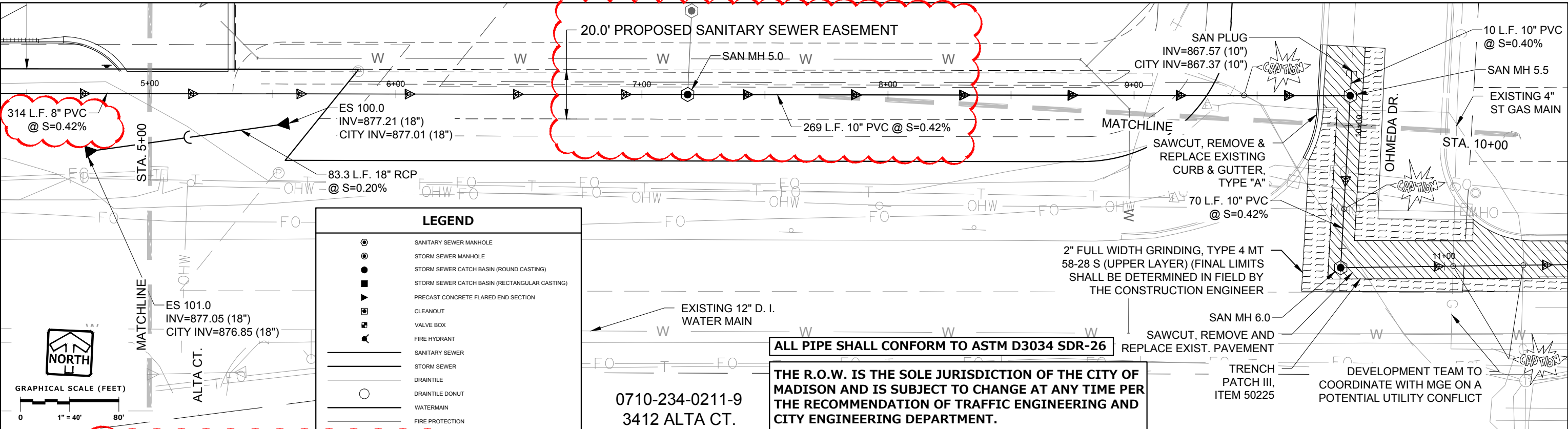
www.pinnacle-engr.com  
**FOR CONSTRUCTION**  
**UTILITY PLAN**  
 © COPYRIGHT 2019

THESE PLANS AND DESIGNS ARE COPYRIGHT PROTECTED AND MAY NOT BE USED IN WHOLE OR IN PART WITHOUT THE WRITTEN CONSENT OF PINNACLE ENGINEERING GROUP, LLC

REVIEWED: TOM

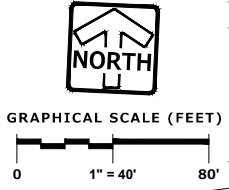
DESIGNED: TOM

DRAWN: MRC



**LEGEND**

- SANITARY SEWER MANHOLE
- STORM SEWER MANHOLE
- STORM SEWER CATCH BASIN (ROUND CASTING)
- STORM SEWER CATCH BASIN (RECTANGULAR CASTING)
- ▴ PRECAST CONCRETE FLARED END SECTION
- CLEANOUT
- VALVE BOX
- FIRE HYDRANT
- SANITARY SEWER
- STORM SEWER
- DRAIN TILE
- DRAIN TILE DONUT
- WATERMAIN
- FIRE PROTECTION



0710-234-0211-9  
3412 ALTA CT.

**ALL PIPE SHALL CONFORM TO ASTM D3034 SDR-26**

**THE R.O.W. IS THE SOLE JURISDICTION OF THE CITY OF MADISON AND IS SUBJECT TO CHANGE AT ANY TIME PER THE RECOMMENDATION OF TRAFFIC ENGINEERING AND CITY ENGINEERING DEPARTMENT.**

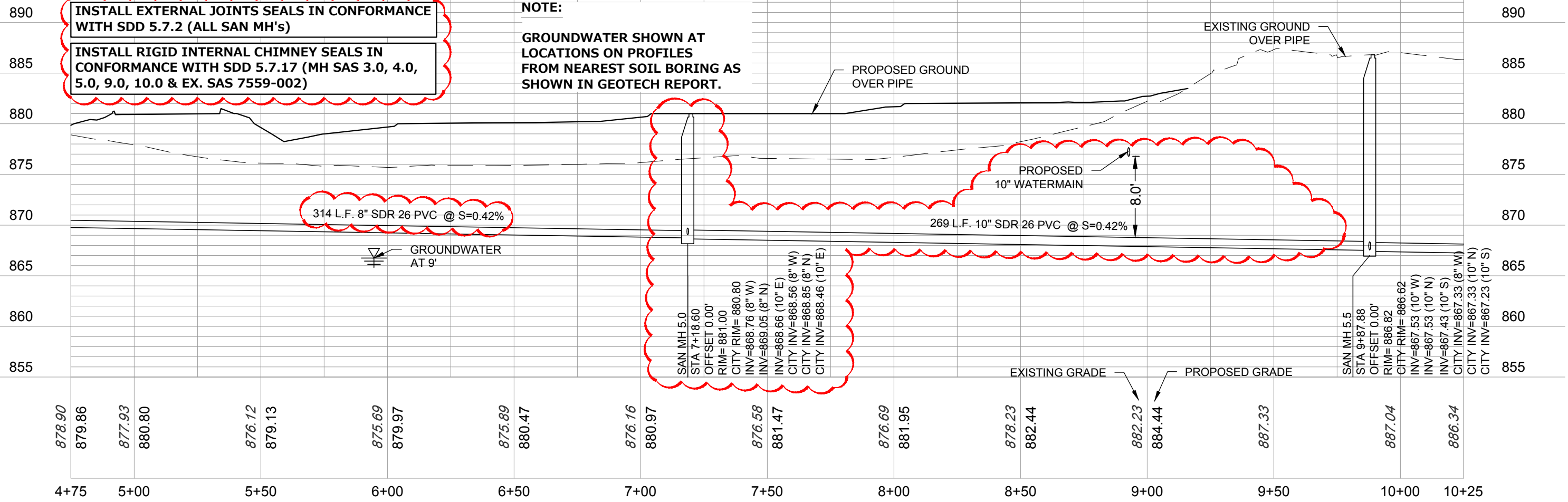
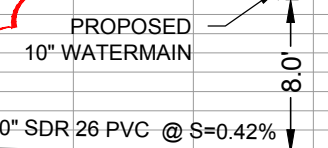
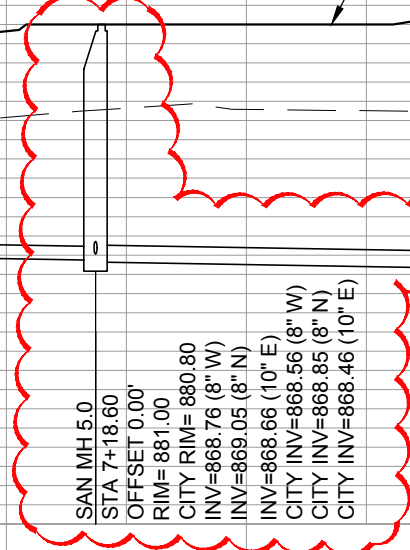
**INSTALL EXTERNAL JOINTS SEALS IN CONFORMANCE WITH SDD 5.7.2 (ALL SAN MH'S)**

**INSTALL RIGID INTERNAL CHIMNEY SEALS IN CONFORMANCE WITH SDD 5.7.17 (MH SAS 3.0, 4.0, 5.0, 9.0, 10.0 & EX. SAS 7559-002)**

**NOTE:**

**GROUNDWATER SHOWN AT LOCATIONS ON PROFILES FROM NEAREST SOIL BORING AS SHOWN IN GEOTECH REPORT.**

314 L.F. 8" SDR 26 PVC @ S=0.42%



PLAN | DESIGN | DELIVER  
www.pinnacle-engr.com

**PINNACLE ENGINEERING GROUP**  
ENGINEERING | NATURAL RESOURCES | SURVEYING

WISCONSIN OFFICE:  
20725 WATERTOWN ROAD, SUITE 100  
BROOKFIELD, WI 53186  
(262) 754-8888  
CHICAGO | MILWAUKEE | NATIONWIDE

**3030 OHMEDA DRIVE CSM**

**MADISON, WISCONSIN**

**UTILITY PLAN**

**REVISIONS**

NO.	DESCRIPTION	DATE
1	CITY REVISIONS	12/08/22
2	ADD CITY DATUM INVERTS	01/20/23
3	SANITARY REALIGNMENT	05/09/23
4	MOVE SANITARY MH 5.0	07/19/23

PEG JOB No. 1933.00  
PEG PIN ABA  
START DATE 08/05/20  
SCALE 1" = 40'

**SHEET C-15 C-29**

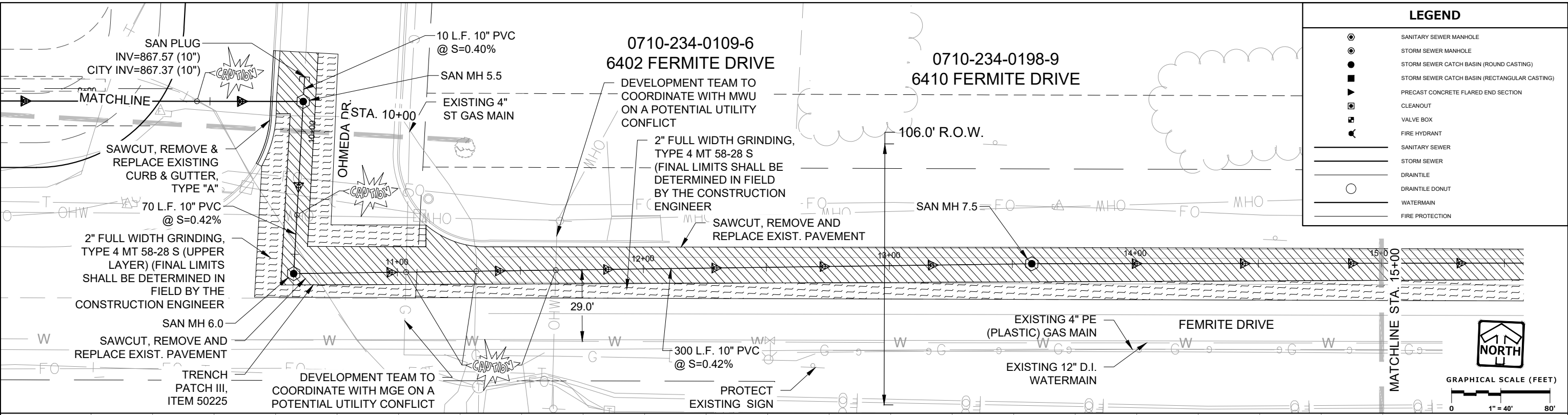
© COPYRIGHT 2019

THESE PLANS AND DESIGNS ARE COPYRIGHT PROTECTED AND MAY NOT BE USED IN WHOLE OR IN PART WITHOUT THE WRITTEN CONSENT OF PINNACLE ENGINEERING GROUP, LLC

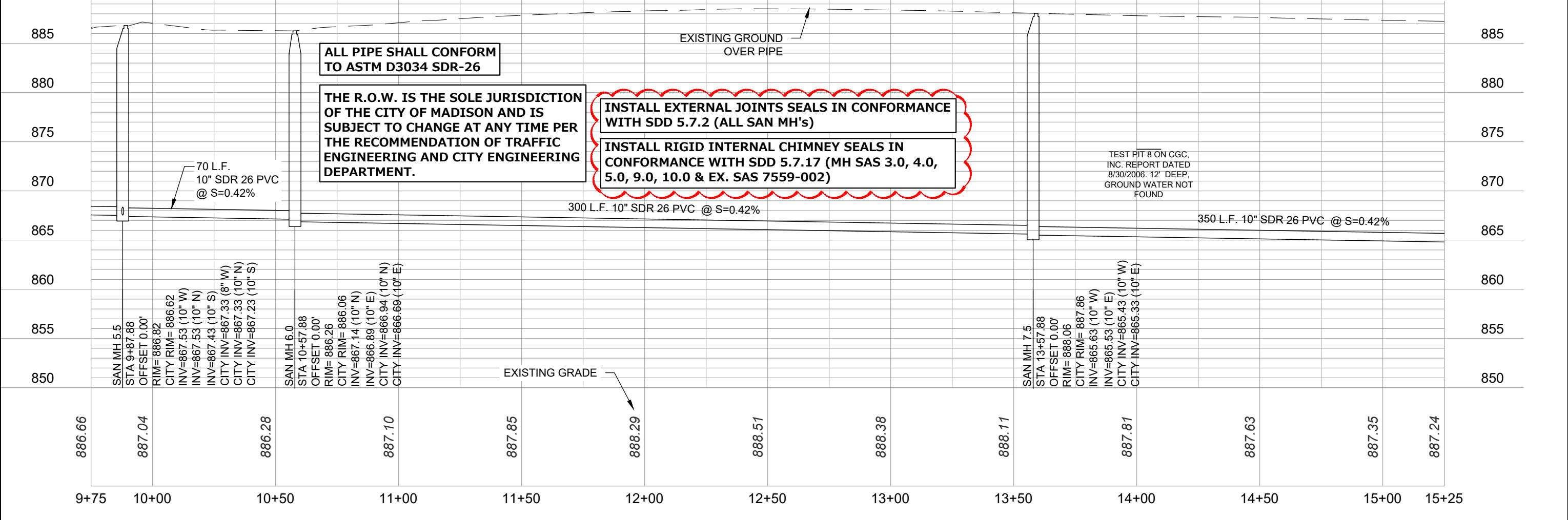
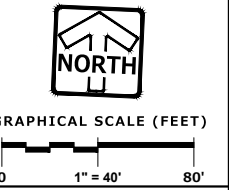
REVIEWED: TOM

DESIGNED: TOM

DRAWN: MRC



LEGEND	
	SANITARY SEWER MANHOLE
	STORM SEWER MANHOLE
	STORM SEWER CATCH BASIN (ROUND CASTING)
	STORM SEWER CATCH BASIN (RECTANGULAR CASTING)
	PRECAST CONCRETE FLARED END SECTION
	CLEANOUT
	VALVE BOX
	FIRE HYDRANT
	SANITARY SEWER
	STORM SEWER
	DRAINTILE
	DRAINTILE DONUT
	WATERMAIN
	FIRE PROTECTION



**ALL PIPE SHALL CONFORM TO ASTM D3034 SDR-26**

**THE R.O.W. IS THE SOLE JURISDICTION OF THE CITY OF MADISON AND IS SUBJECT TO CHANGE AT ANY TIME PER THE RECOMMENDATION OF TRAFFIC ENGINEERING AND CITY ENGINEERING DEPARTMENT.**

**INSTALL EXTERNAL JOINTS SEALS IN CONFORMANCE WITH SDD 5.7.2 (ALL SAN MH's)**  
**INSTALL RIGID INTERNAL CHIMNEY SEALS IN CONFORMANCE WITH SDD 5.7.17 (MH SAS 3.0, 4.0, 5.0, 9.0, 10.0 & EX. SAS 7559-002)**

TEST PIT 8 ON CGC, INC. REPORT DATED 8/30/2006. 12\"/>

**PINNACLE ENGINEERING GROUP**  
 ENGINEERING | NATURAL RESOURCES | SURVEYING  
 WISCONSIN OFFICE: 20725 WATERTOWN ROAD, SUITE 100, BROOKFIELD, WI 53186 (262) 754-8888  
 CHICAGO | MILWAUKEE | NATIONWIDE

**3030 OHMEDA DRIVE CSM**  
**MADISON, WISCONSIN**

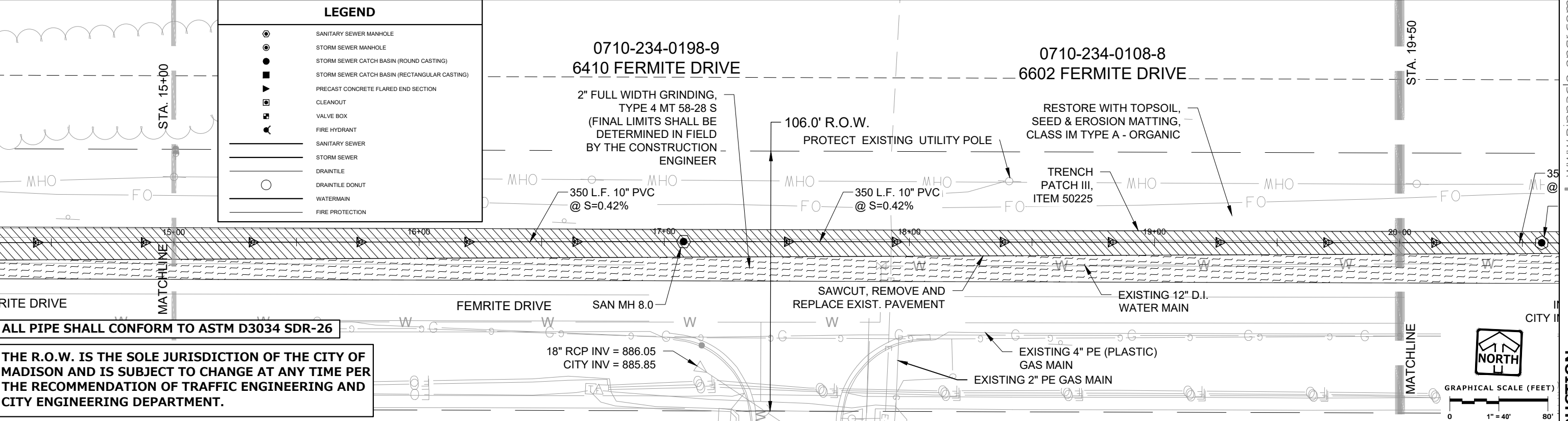
**UTILITY PLAN**

REVISIONS	
1	CITY REVISIONS 12/08/22
2	ADD CITY DATUM INVERTS 01/20/23
3	SANITARY REALIGNMENT 05/09/23
4	MOVE SANITARY MH 5.0 07/19/23

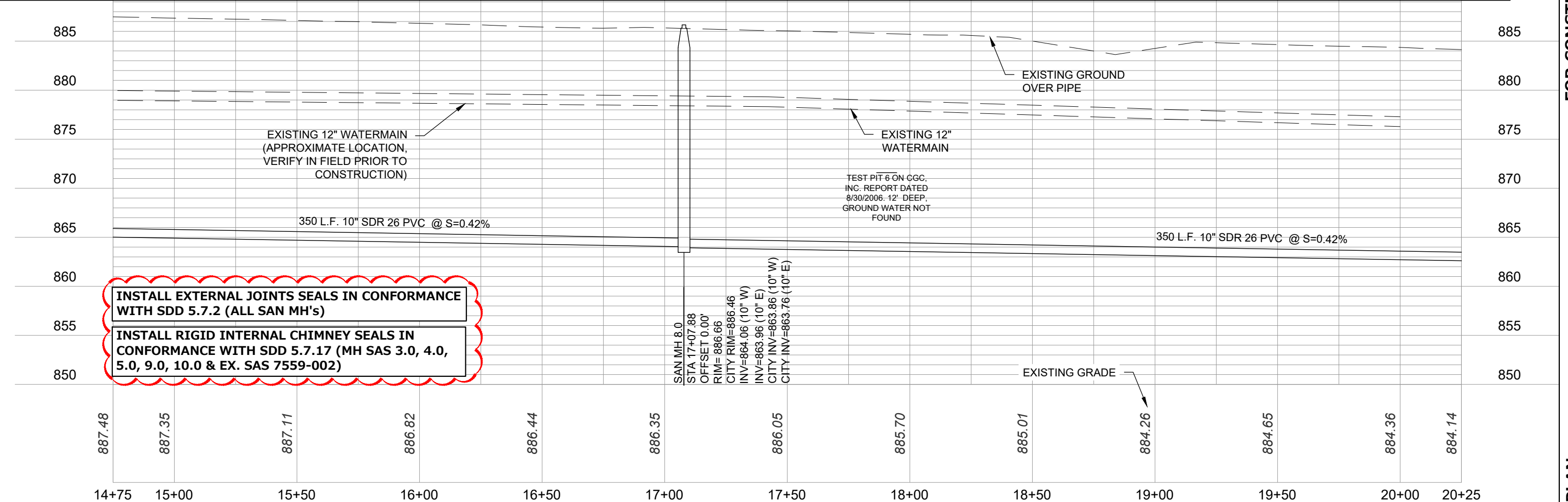
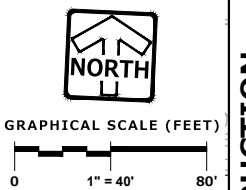
SHEET **C-16**  
**C-29**  
 PEG JOB No. 1933.00  
 PEG PIN AREA  
 START DATE 08/05/20  
 SCALE 1" = 40'  
 © COPYRIGHT 2019

DRAFTED: MRC    DESIGNED: TOM    REVIEWED: TOM    THESE PLANS AND DESIGNS ARE COPYRIGHT PROTECTED AND MAY NOT BE USED IN WHOLE OR IN PART WITHOUT THE WRITTEN CONSENT OF PINNACLE ENGINEERING GROUP, LLC

LEGEND	
	SANITARY SEWER MANHOLE
	STORM SEWER MANHOLE
	STORM SEWER CATCH BASIN (ROUND CASTING)
	STORM SEWER CATCH BASIN (RECTANGULAR CASTING)
	PRECAST CONCRETE FLARED END SECTION
	CLEANOUT
	VALVE BOX
	FIRE HYDRANT
	SANITARY SEWER
	STORM SEWER
	DRAIN TILE
	DRAIN TILE DONUT
	WATERMAIN
	FIRE PROTECTION



**ALL PIPE SHALL CONFORM TO ASTM D3034 SDR-26**  
**THE R.O.W. IS THE SOLE JURISDICTION OF THE CITY OF MADISON AND IS SUBJECT TO CHANGE AT ANY TIME PER THE RECOMMENDATION OF TRAFFIC ENGINEERING AND CITY ENGINEERING DEPARTMENT.**



**INSTALL EXTERNAL JOINTS SEALS IN CONFORMANCE WITH SDD 5.7.2 (ALL SAN MH'S)**  
**INSTALL RIGID INTERNAL CHIMNEY SEALS IN CONFORMANCE WITH SDD 5.7.17 (MH SAS 3.0, 4.0, 5.0, 9.0, 10.0 & EX. SAS 7559-002)**

SAN MH 8.0  
 STA 17+07.88  
 OFFSET 0.00'  
 RIM = 886.66  
 CITY RIM = 886.46  
 INV = 864.06 (10" W)  
 INV = 863.96 (10" E)  
 CITY INV = 863.86 (10" W)  
 CITY INV = 863.76 (10" E)

 <b>PINNACLE ENGINEERING GROUP</b> <small>ENGINEERING   NATURAL RESOURCES   SURVEYING</small> <small>WISCONSIN OFFICE: 20725 WATERTOWN ROAD, SUITE 100, BROOKFIELD, WI 53186 (262) 754-8888 CHICAGO   MILWAUKEE: NATIONWIDE</small>	<b>3030 OHMEDA DRIVE CSM</b> <b>MADISON, WISCONSIN</b>	<b>UTILITY PLAN</b>	<b>REVISIONS</b> <table border="1" style="width: 100%; border-collapse: collapse;"> <tr> <td style="width: 70%;">1 - CITY REVISIONS</td> <td style="width: 30%;">12/08/22</td> </tr> <tr> <td>2 - ADD CITY DATUM INVERTS</td> <td>01/20/23</td> </tr> <tr> <td>3 - SANITARY REALIGNMENT</td> <td>05/09/23</td> </tr> <tr> <td>4 - MOVE SANITARY MH 5.0</td> <td>07/19/23</td> </tr> </table>	1 - CITY REVISIONS	12/08/22	2 - ADD CITY DATUM INVERTS	01/20/23	3 - SANITARY REALIGNMENT	05/09/23	4 - MOVE SANITARY MH 5.0	07/19/23	<table border="1" style="width: 100%; border-collapse: collapse;"> <tr> <td style="font-size: 8px;">SHEET</td> <td style="text-align: center;">C-17</td> </tr> <tr> <td style="font-size: 8px;">C-29</td> <td style="text-align: center;">C-29</td> </tr> </table>	SHEET	C-17	C-29	C-29
1 - CITY REVISIONS	12/08/22															
2 - ADD CITY DATUM INVERTS	01/20/23															
3 - SANITARY REALIGNMENT	05/09/23															
4 - MOVE SANITARY MH 5.0	07/19/23															
SHEET	C-17															
C-29	C-29															

www.pinnacle-engr.com  
**FOR CONSTRUCTION**  
**UTILITY PLAN**  
 © COPYRIGHT 2019

