

OUR CITY OF MADISON



Fleet Division Introduction

Mahanth Joishy, *Fleet Superintendent*

Rachel Darken, *Assistant Fleet Superintendent*

Vision and Mission

Inclusive – Innovative – Thriving



CITY OF MADISON

Our Agency's Vision and Mission

Vision

- Our Madison: Inclusive, Innovative, & Thriving

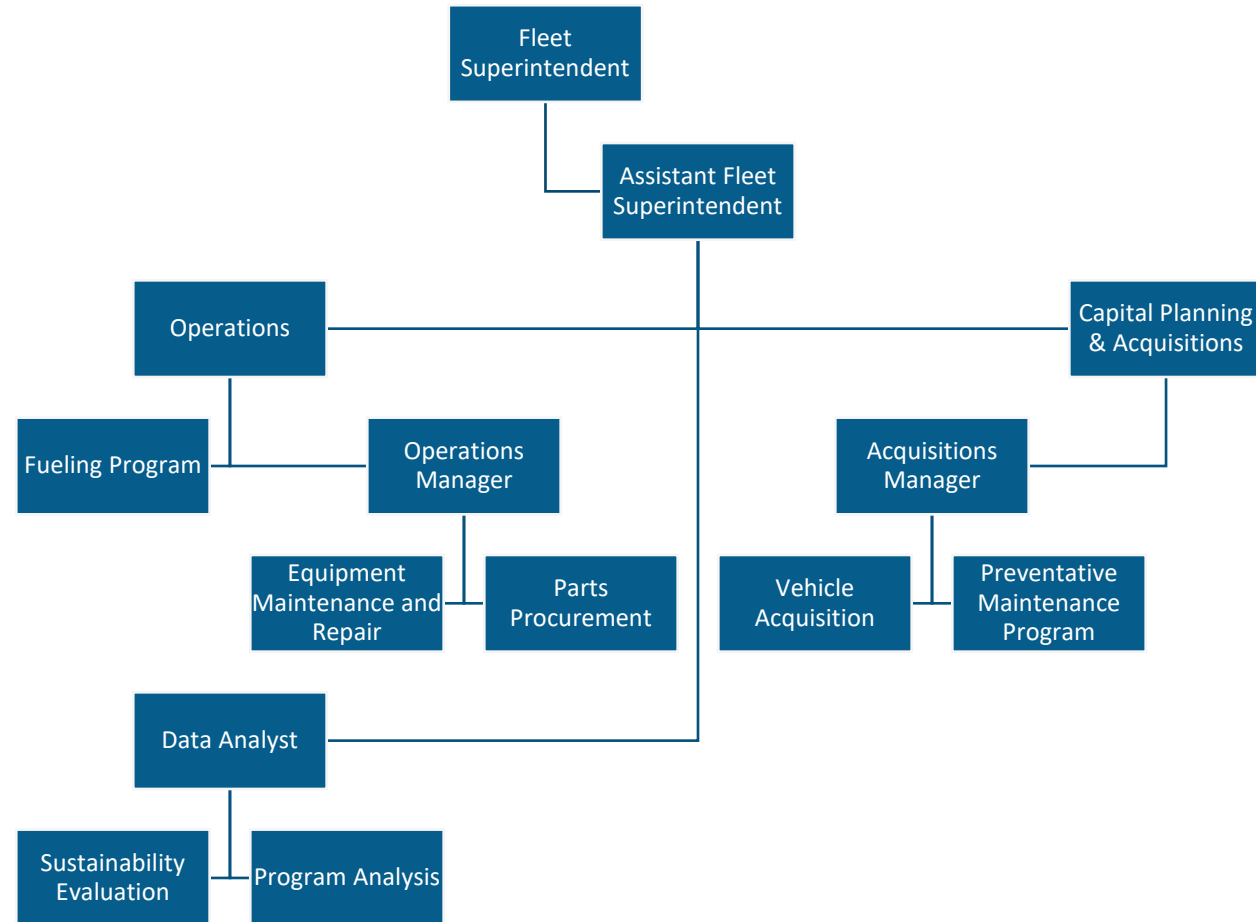
Mission

- Fleet's mission is to ensure other City agencies and departments have the equipment they need to safely and effectively serve our community.

Structure, Services, and Staff



Structure



Services

- Vehicle and equipment acquisition and set-up
- Preventative maintenance and repair
- Parts inventory
- Fueling operations
- Pool cars
- Auction of equipment at end of useful life

Key Staff

- Mahanth Joishy, Fleet Superintendent
- Rachel Darken, Assistant Fleet Superintendent
 - Operating and Capital Budgets, Strategic Planning, Personnel
- Randy Koch, Operations Manager
 - Parts, Maintenance, and Repair
- Brett Rosenau, Acquisitions Manager
 - Acquisitions, Equipment Set-Up, EV's and Fuel Program
- Ilknur Uludag, Data Analyst
 - Analysis, GPS, Vision Zero

Common Citywide Collaborations

Inclusive – Innovative – Thriving



Common Citywide Collaborations

Staff in our agency most often collaborate with these agencies across TeamCity:

Agency	Topic(s)
Traffic Engineering	Vision Zero
Mayor's Office	Sustainability Efforts
All Agencies	Service Operations

Agency Resources

Inclusive – Innovative – Thriving



Our Agency's Key Links

- Agency Website: <https://www.cityofmadison.com/fleet-service>
- [APM 2-13 Policy Regarding City Vehicle Driver Policy](#)

Our Agency's Acronyms

Common acronyms used by our agency include:

B5, B20, and B100

- Fuel blends denoting the percentage of biodiesel (5%, 20%, and 100%).

CO2

- Carbon dioxide. We track all pounds of CO2 reduced through our implementation of hybrid vehicles, EVs, biodiesel, and the installation of solar panels on our facility.

EVs

- Electric Vehicles. We are continuously adding EVs to the fleet to reach our goal of eliminating nearly all carbon dioxide emissions by 2030.

GPS

- Global Positioning System. Public Works equipment has Geotab GPS units installed.

OS

- Out of Service. We track the time that any piece of equipment is down and not available for service.

PM

- Preventative Maintenance. Regular service performed on equipment to keep it running well into its planned useful life.

R25, R99

- Fuel blends denoting the percentage of renewable diesel (25% and 99%/100%)

OUR CITY OF MADISON



Let's Connect!

Mahanth Joishy, *Fleet
Superintendent*

mjoishy@cityofmadison.com

(608) 246-4546

Rachel Darken, *Assistant Fleet
Superintendent*

rdarken@cityofmadison.com

(608) 246-4540

CITY OF MADISON