

# City of Madison Streets & Urban Forestry Division

ONBOARDING VIDEO #1

Agency Introduction and Organization Chart

March 2025





# What is the StUF Division mission?

*Provide a clean, safe, welcoming atmosphere for City of Madison residents, businesses, and guests by providing high quality, cost-effective, and essential public works services.*





# What does the Streets Division do?







# What does Urban Forestry do?





# Where to get more information?

- Streets Division websites:
  - [www.cityofmadison.com/Streets](http://www.cityofmadison.com/Streets)
  - [www.cityofmadison.com/Recycling](http://www.cityofmadison.com/Recycling)
  - [www.cityofmadison.com/Forestry](http://www.cityofmadison.com/Forestry)
  - [www.cityofmadison.com/FoodScraps](http://www.cityofmadison.com/FoodScraps)
  - [www.cityofmadison.com/eCycle](http://www.cityofmadison.com/eCycle)
  - [www.cityofmadison.com/BatteryRecycling](http://www.cityofmadison.com/BatteryRecycling)
  - [www.cityofmadison.com/LargeItem](http://www.cityofmadison.com/LargeItem)
  - [www.cityofmadison.com/Mulch](http://www.cityofmadison.com/Mulch)
  - [www.cityofmadison.com/DropOffSites](http://www.cityofmadison.com/DropOffSites)
  - [www.cityofmadison.com/Winter](http://www.cityofmadison.com/Winter)
  - [www.cityofmadison.com/YardWaste](http://www.cityofmadison.com/YardWaste)
  - [www.cityofmadison.com/BrushCollection](http://www.cityofmadison.com/BrushCollection)

## And our publications, too!

### RECYCLOPEDIA MINI



#### LARGE ITEM FEE CHANGES FOR 2024

If your home pays the Resource Recovery Special Charge, you will not be charged additional fees for certain large items when you make the required large item work orders for curbside collection or when these certain large items are delivered to a drop-off site.

If you do not pay the Resource Recovery Special Charge, then you will still need to pay the necessary fee for these certain items when making your required work orders for curbside pickup. Any necessary fee would also need to be paid prior to bringing these certain items to a drop-off site.

#### Who pays the Resource Recovery Special Charge?

If your recycling is collected by the City of Madison Streets Division, then you pay the Resource Recovery Special Charge. The charge appears on the Madison Municipal Services Bill. This is the same monthly bill that includes the charges for your water usage.

#### What are "Large Items"?

Items too large for the trash cart, or items requiring special handling such as appliances, furniture, tires, exercise equipment, and many other bulky items.

#### Large Items Requiring an Additional Fee

A list of the large items requiring an additional fee can be found on the large item website.



#### LARGE ITEM COLLECTION [cityofmadison.com/largeitem](http://cityofmadison.com/largeitem)

Large item work orders are required to have your items picked up at the curb. Create your work order online. Call the Streets Division offices for assistance with the form. If you set large items out for collection without a work order, you may be fined by Building Inspection.

Set the item out on the date you selected in the work order. Do not set the item out early. Items are collected during the work week following the set out Sunday.

#### Defining "Large Item"

Large items are big things too large for the trash cart, items requiring a fee, or items that require special handling. This includes appliances, microwaves, furniture, tires, exercise equipment, toilets, pianos, and many other bulky items.

Large items are **not** oversized cardboard boxes, or excess bags of trash from a household cleanup

#### Large Item Placement Guidelines

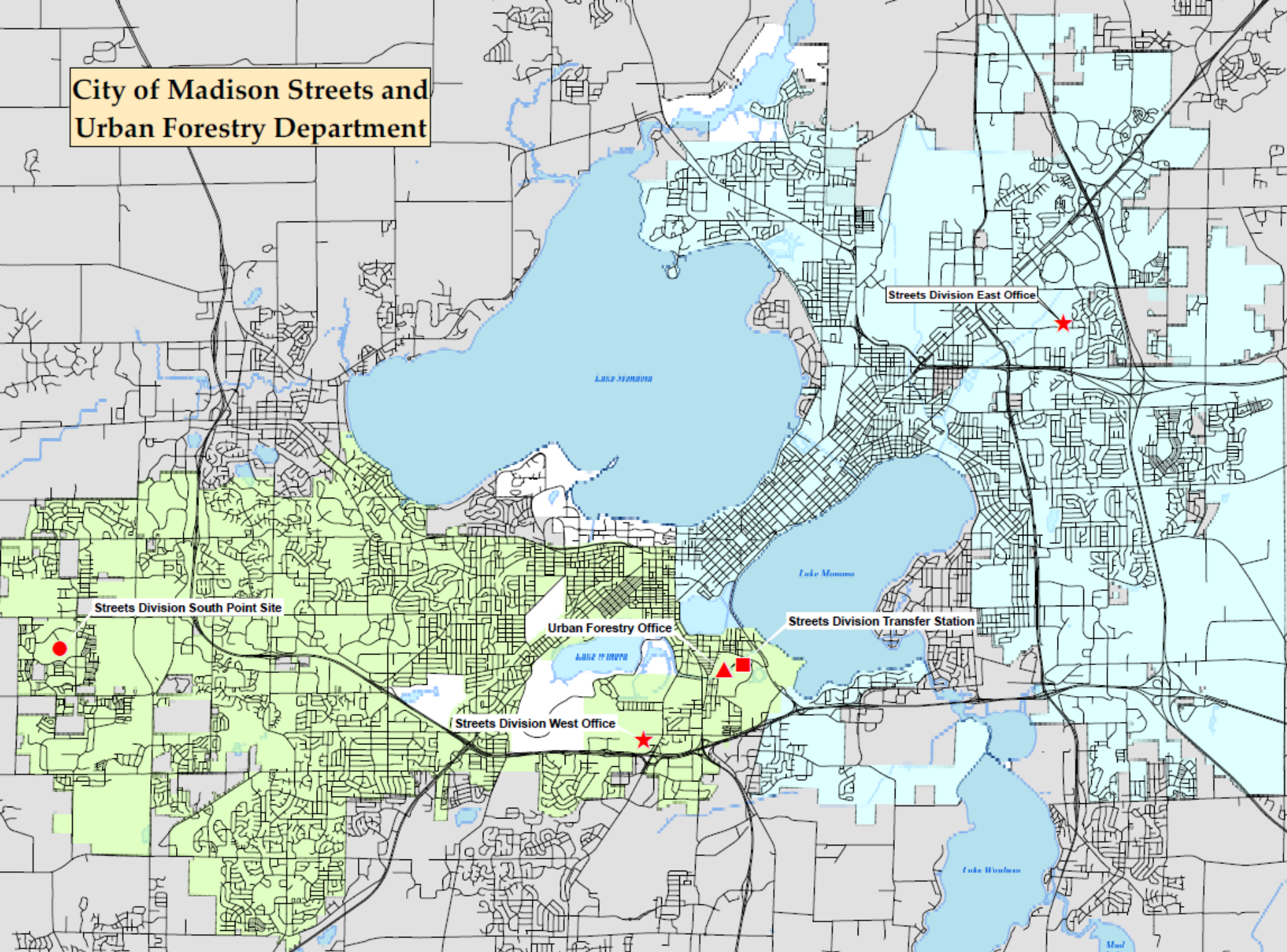
- » Stack items neatly in the right of way / terrace along public streets.
- » Keep metal items/appliances and non-metal items separated.
- » Keep items four feet from obstructions like utility poles, street signs, etc.
- » Avoid setting items underneath low-hanging wires or branches.
- » All large items must be less than 8 feet in length.

#### Streets & Urban Forestry [cityofmadison.com/streets](http://cityofmadison.com/streets)



- » **Streets Division - East**
  - 4602 Sycamore Ave.
  - (608) 246-4532
  - Office hours: Monday-Friday, 7:30am to 4:00pm
  - [streets@cityofmadison.com](mailto:streets@cityofmadison.com)
- » **Streets Division - West**
  - 1501 W. Badger Rd.
  - (608) 266-4681
  - Office hours: Monday-Friday, 7:30am to 4:00pm
  - [streets@cityofmadison.com](mailto:streets@cityofmadison.com)
- » **Urban Forestry**
  - 1402 Wingra Creek Parkway
  - (608) 266-4816
  - Office hours: Monday-Friday, 7:00am to 3:00pm
  - [streets@cityofmadison.com](mailto:streets@cityofmadison.com)
- » **Wood Mulch & Brush Processing**
  - 121 E. Olin Ave.
  - (608) 266-4911
  - Hours: Monday-Friday, 7:30am to 2:30pm
  - [streets@cityofmadison.com](mailto:streets@cityofmadison.com)
- » **Hotlines**
  - Special Charges: (608) 243-5899
  - Winter Parking: (608) 261-9111
- » **Report-a-problem**
  - [cityofmadison.com/reportaproblem](http://cityofmadison.com/reportaproblem)

**City of Madison Streets and  
Urban Forestry Department**



**Office  
Phone  
Numbers**

Streets West  
608-266-4681

Streets East  
608-246-4532

Forestry  
608-266-4816





Charlie Romines

*Streets Division  
Superintendent &  
Public Works Lead*



Roger Kleist  
*Assistant Streets Superintendent*



Ian Brown  
*City Forester*



Bryan Johnson  
*Recycling Coordinator / Public Information Officer*





# Contact Information

## **Charlie Romines (Streets Superintendent)**

608-266-4680

[cromines@cityofmadison](mailto:cromines@cityofmadison)

## **Roger Kleist (Assistant Superintendent)**

608-246-4535

[rkleist@cityofmadison.com](mailto:rkleist@cityofmadison.com)

## **Ian Brown (City Forester)**

608-266-4816

[ibrown@cityofmadison.com](mailto:ibrown@cityofmadison.com)

[forestry@cityofmadison.com](mailto:forestry@cityofmadison.com)

## **Bryan Johnson (Recycling Coordinator / PIO)**

608-267-2626

[byjohnson@cityofmadison.com](mailto:byjohnson@cityofmadison.com)

[streets@cityofmadison.com](mailto:streets@cityofmadison.com)



# Report – a – Problem

[www.cityofmadison.com/  
ReportAProblem](http://www.cityofmadison.com/ReportAProblem)

Bikeway Concerns

+

Brush Collection

+

[Graffiti](#)

[Mailbox Damaged by a City Snow Plow](#)

Recycling Collection

+

Refuse Collection

+

Refuse & Recycling Carts

+

Snow Removal

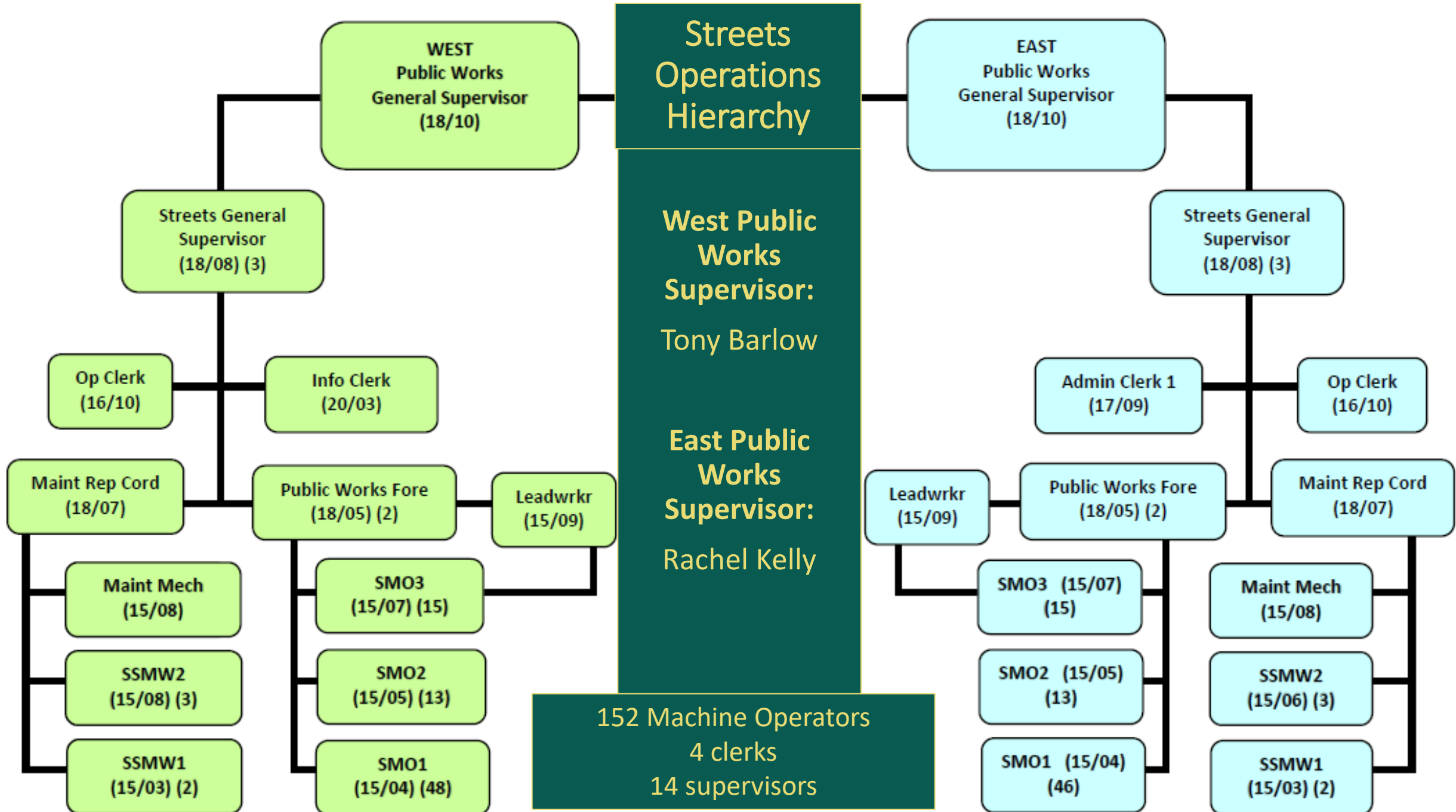
+

Tree Concerns

+

[Weeds & Overgrown Vegetation](#)



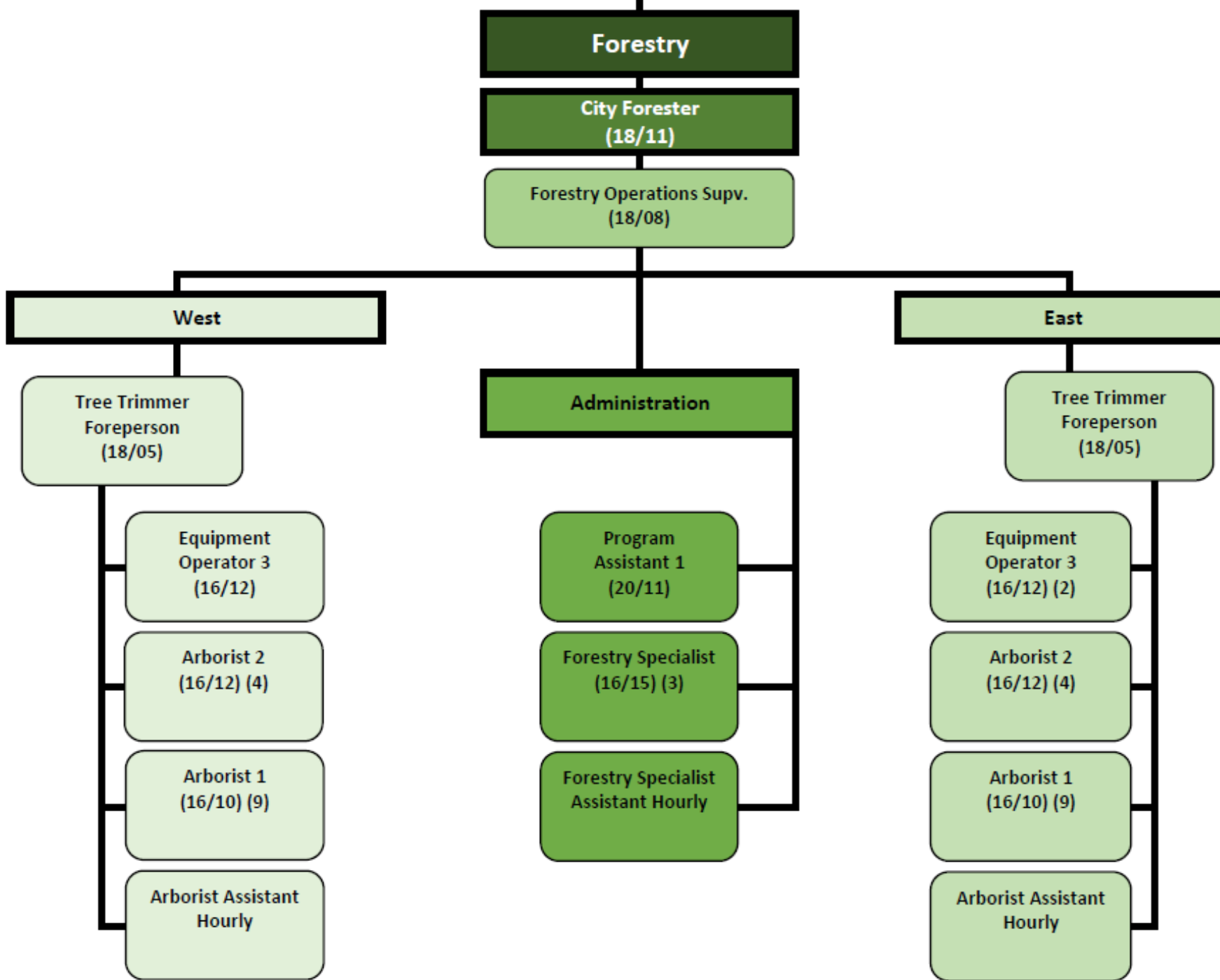




# Urban Forestry Hierarchy

City Forester:  
Ian Brown

29 individuals are handling the planting & pruning of trees in the right-of-way.





# Other Streets Division Positions

## Public Works Laborer

- Lead Worker (2) (15/09)
  - Laborer (10) (15/02)

*Laborer & lead worker positions will float between Public Works agencies*

## Olin Avenue Transfer Station & Brush Processing

### Process Plant Supervisor (18/08)

- Operating Assistant (15/09)
- Operating Maintenance Workers (6) (15/07)

## GIS Specialist (18/10)

## Streets Operations Analyst (18/10)

- Accounting Tech (20/13)





**Charlie Romines (Streets Superintendent)**

608-266-4680

[cromines@cityofmadison](mailto:cromines@cityofmadison)

**Bryan Johnson (PIO)**

608-267-2626

[byjohnson@cityofmadison.com](mailto:byjohnson@cityofmadison.com)

[streets@cityofmadison.com](mailto:streets@cityofmadison.com)

[www.cityofmadison.com/Streets](http://www.cityofmadison.com/Streets)