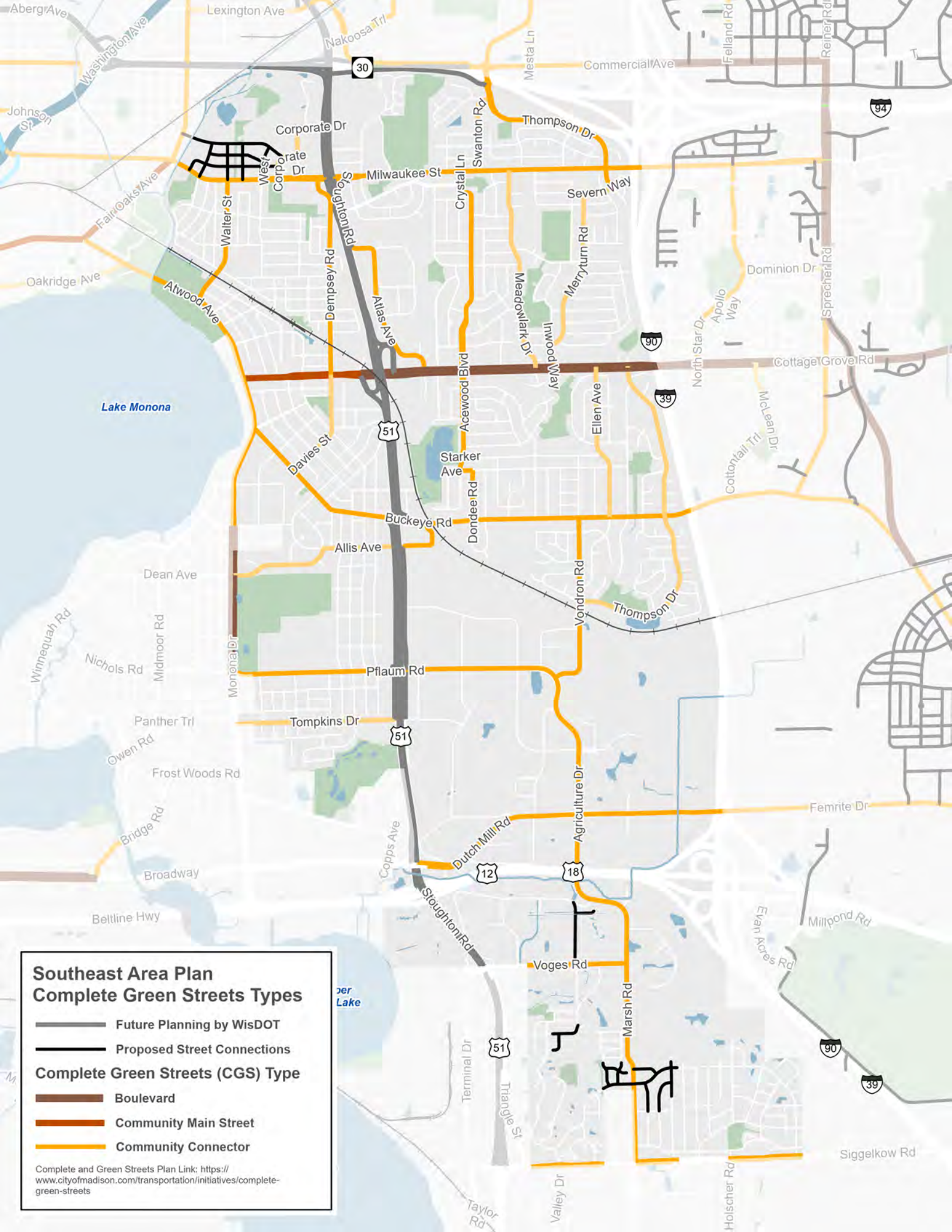


Southeast Area Plan Shared-Use Path & Bicycle Network

- Existing Shared-Use Path/Two-Way Bike Facility
- Planned Shared-Use Path/Two-Way Bike Facility
- Existing On-Street Route/Protected Bike Facility
- Planned On-Street Route/Protected Bike Facility
- Existing Bicycle/Pedestrian Overpass or Underpass
- Proposed Bicycle/Pedestrian Overpass or Underpass
- Public Schools
- Private Schools
- Greenway
- City of Madison Parks / Open Space



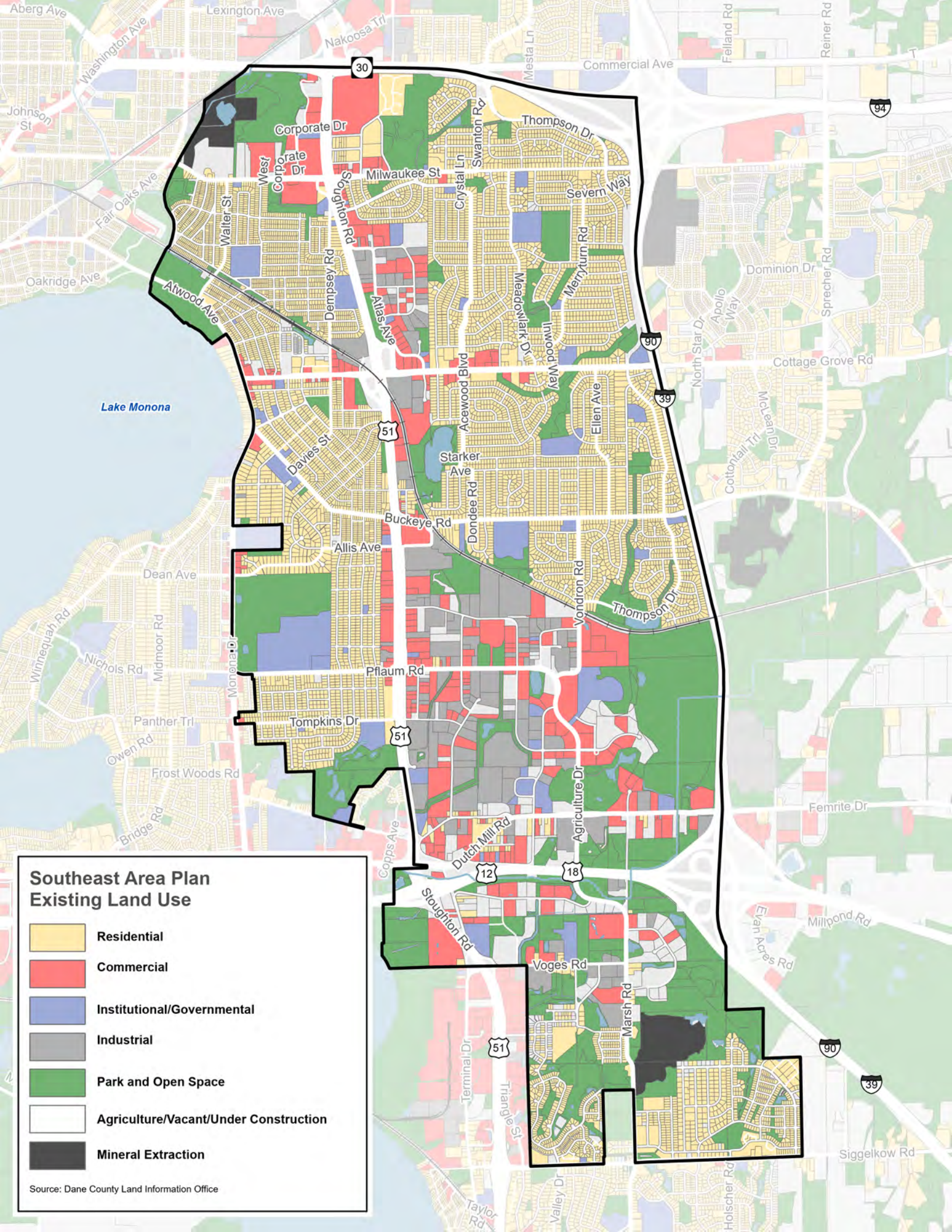
Southeast Area Plan Complete Green Streets Types

- Future Planning by WisDOT
- Proposed Street Connections

Complete Green Streets (CGS) Type

- Boulevard
- Community Main Street
- Community Connector

Complete and Green Streets Plan Link: <https://www.cityofmadison.com/transportation/initiatives/complete-green-streets>




Southeast Area Plan Existing Land Use

- Residential
- Commercial
- Institutional/Governmental
- Industrial
- Park and Open Space
- Agriculture/Vacant/Under Construction
- Mineral Extraction

Source: Dane County Land Information Office

Southeast Area Plan Existing Zoning

 Transit Oriented Development
Overlay Zoning

Residential Zoning

-  SR-C1
-  SR-C2
-  SR-C3
-  SR-V1
-  SR-V2
-  TR-C1
-  TR-C2
-  TR-C3
-  TR-C4
-  TR-P
-  TR-U2
-  TR-V1

Employment Zoning

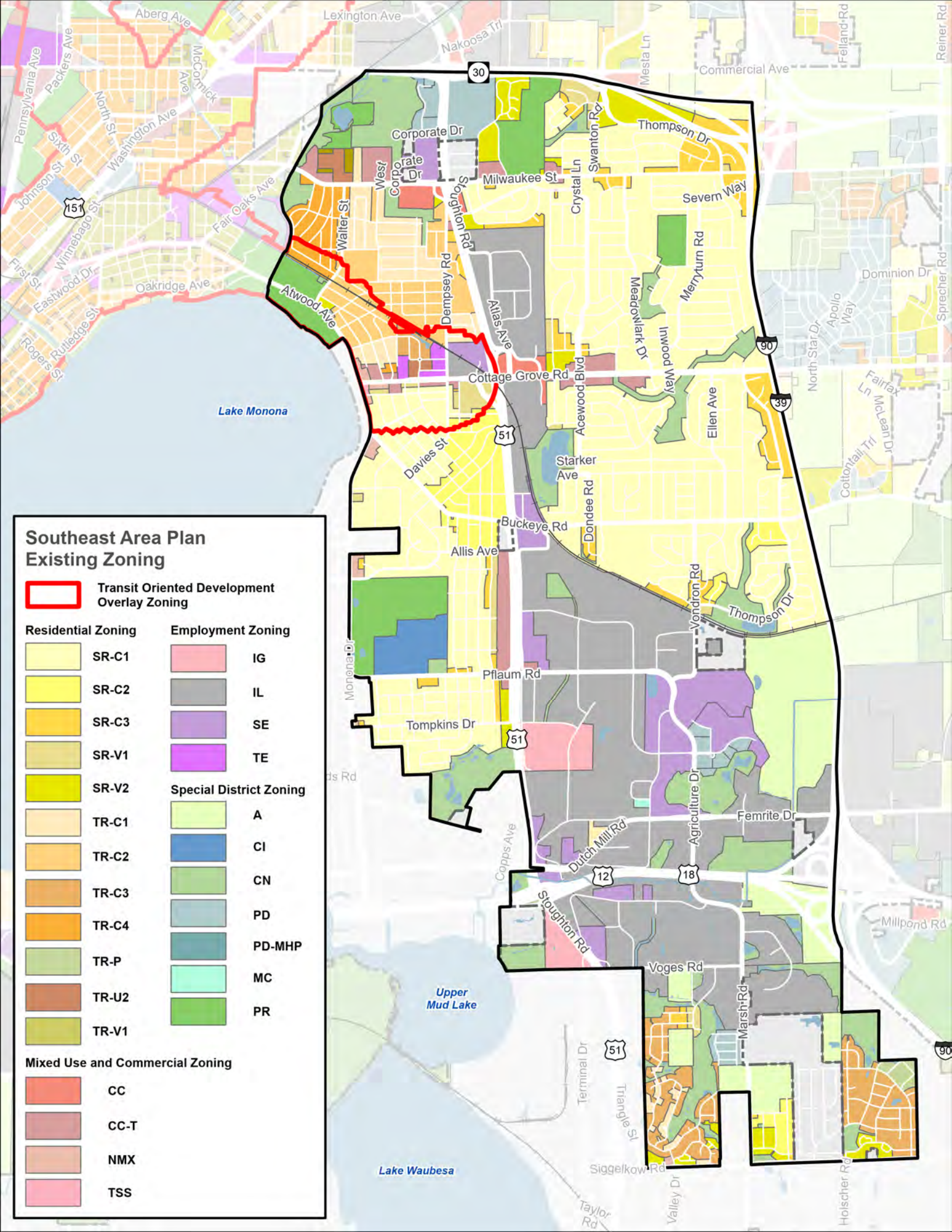
-  IG
-  IL
-  SE
-  TE

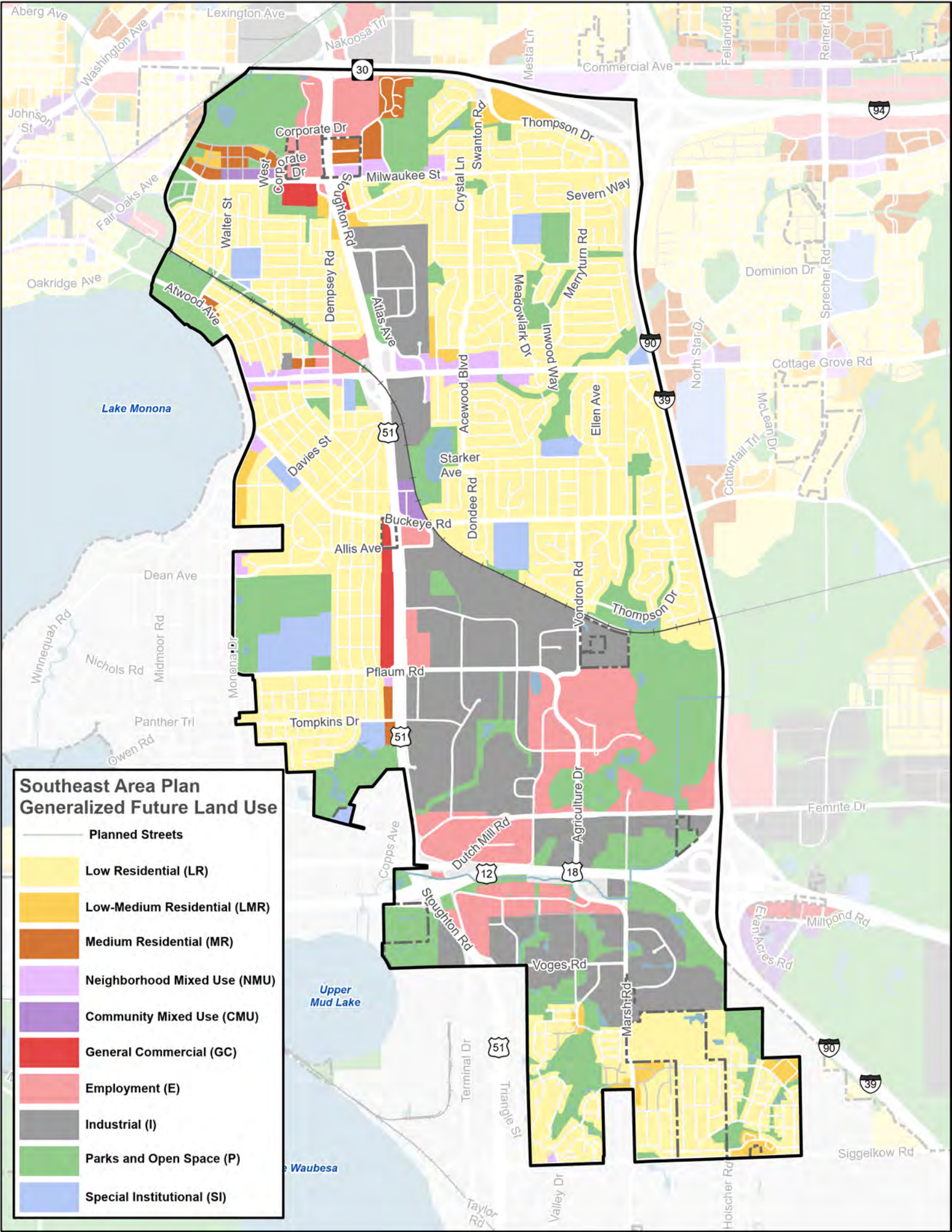
Special District Zoning

-  A
-  CI
-  CN
-  PD
-  PD-MHP
-  MC
-  PR

Mixed Use and Commercial Zoning

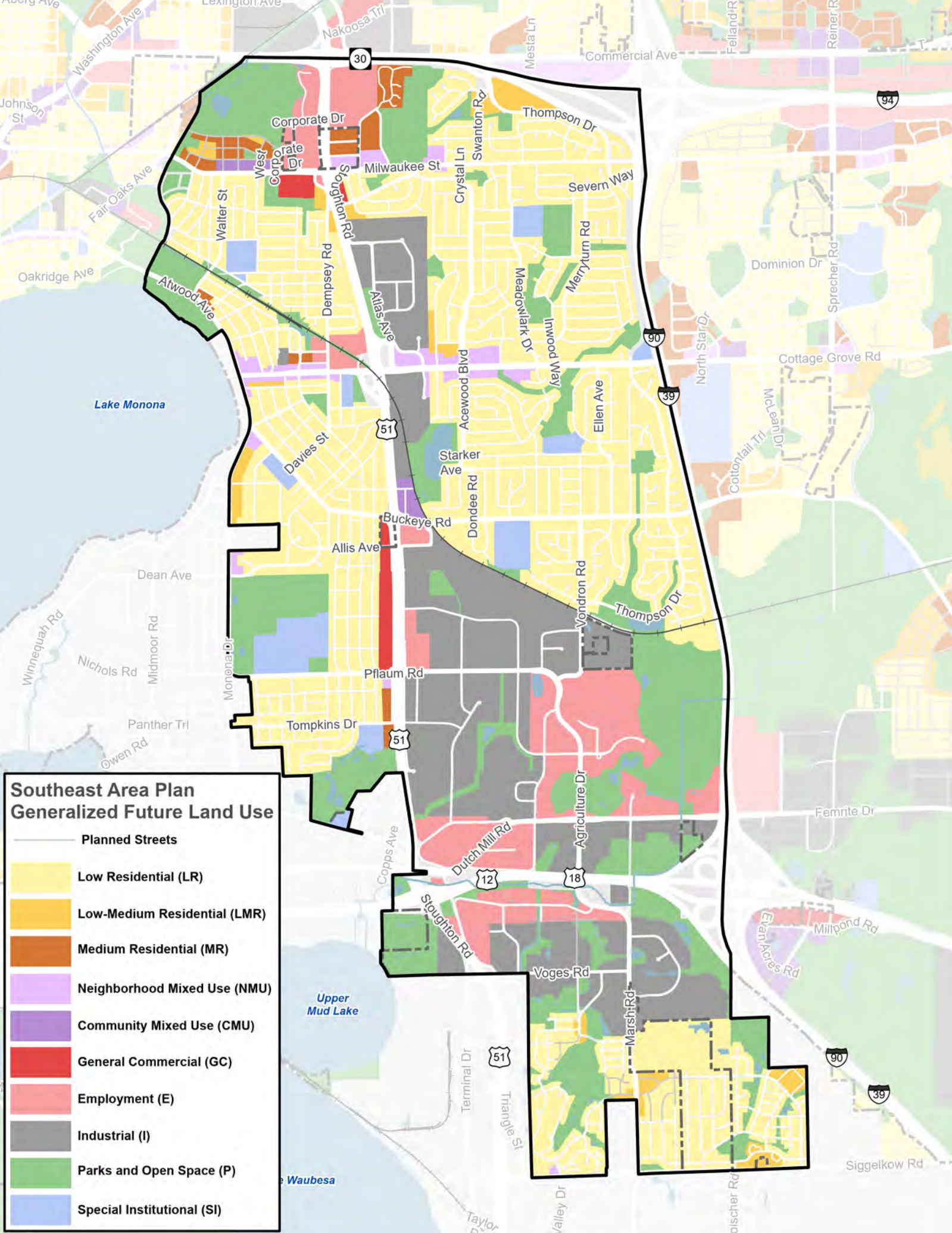
-  CC
-  CC-T
-  NMX
-  TSS

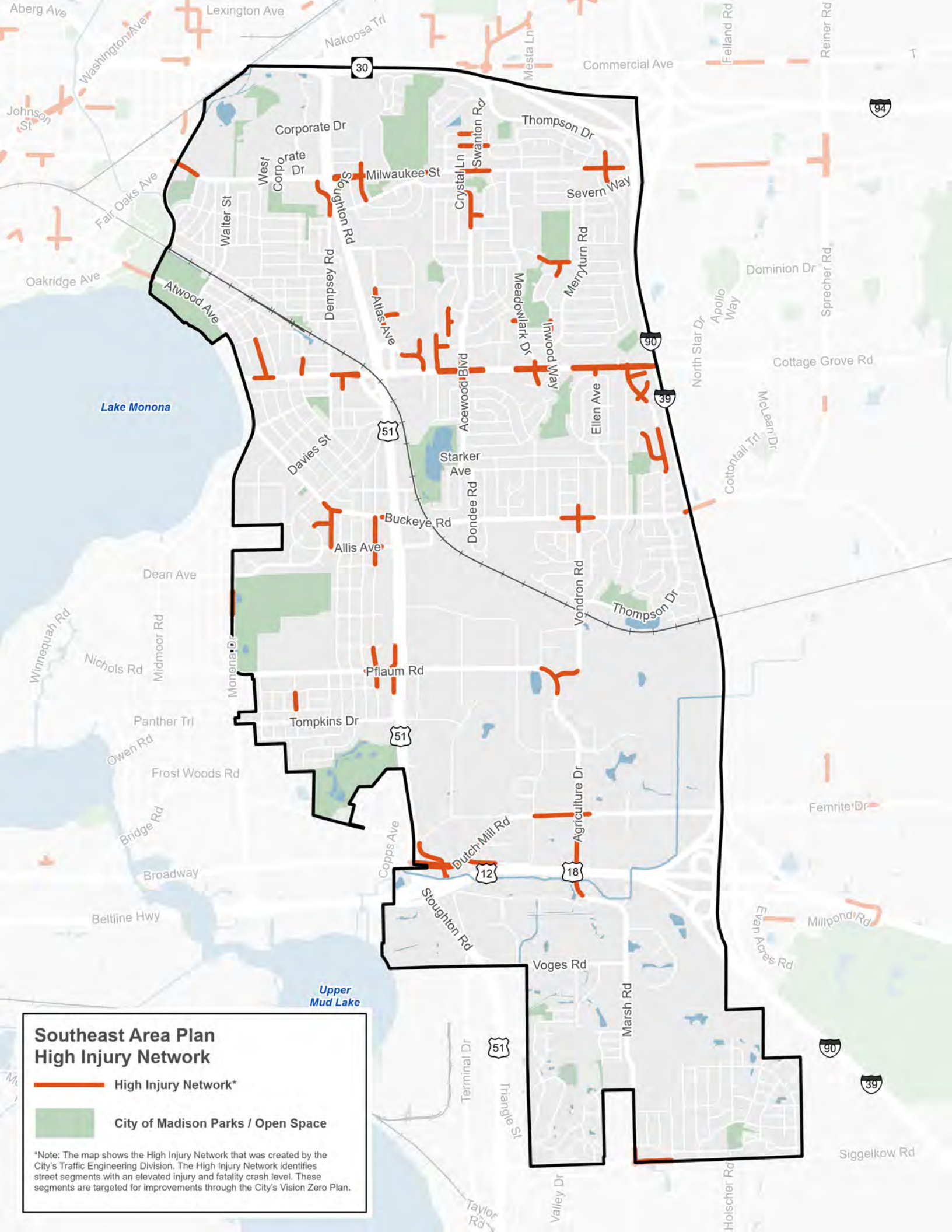





**Southeast Area Plan
Generalized Future Land Use**

-  **Planned Streets**
-  **Low Residential (LR)**
-  **Low-Medium Residential (LMR)**
-  **Medium Residential (MR)**
-  **Neighborhood Mixed Use (NMU)**
-  **Community Mixed Use (CMU)**
-  **General Commercial (GC)**
-  **Employment (E)**
-  **Industrial (I)**
-  **Parks and Open Space (P)**
-  **Special Institutional (SI)**



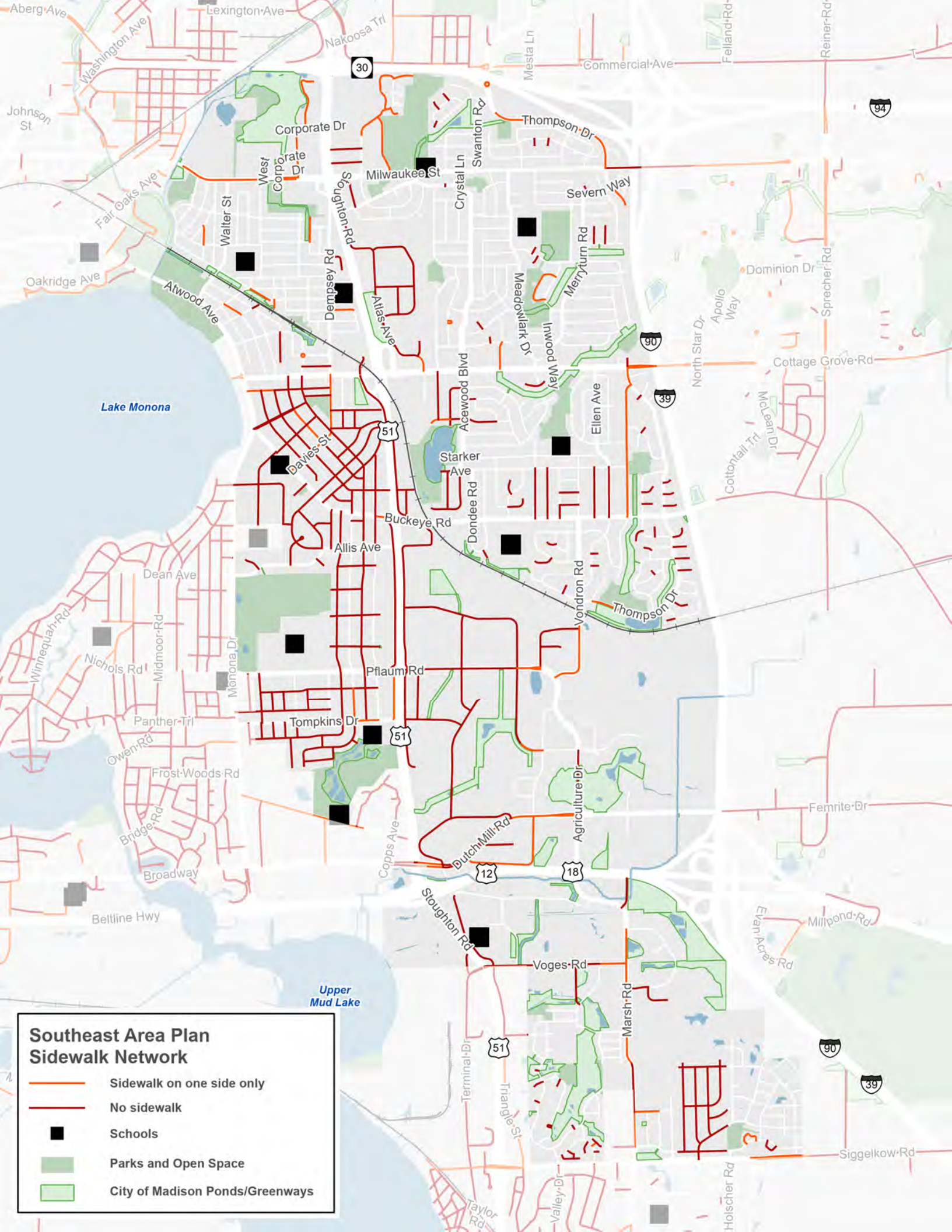


Southeast Area Plan High Injury Network

 High Injury Network*

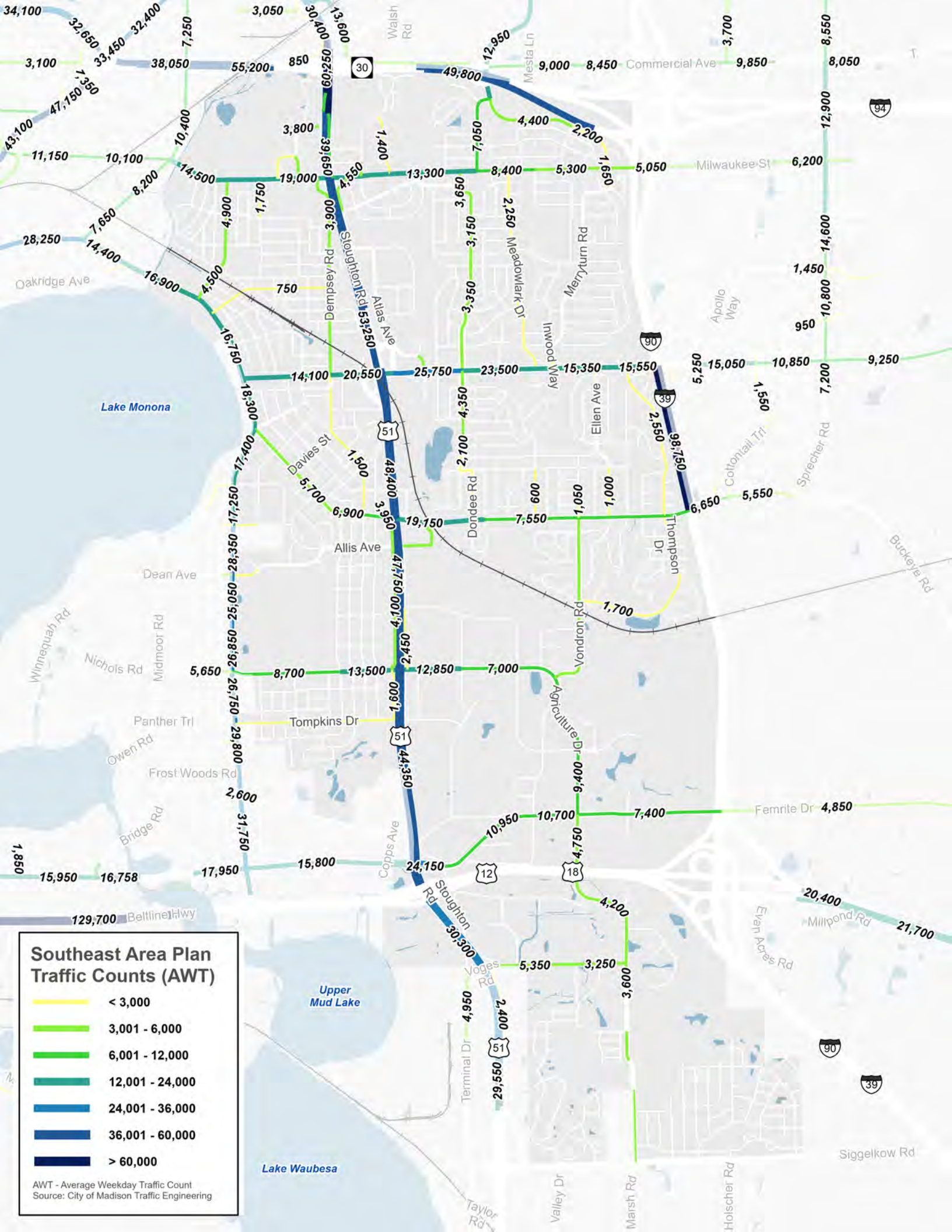
 City of Madison Parks / Open Space

*Note: The map shows the High Injury Network that was created by the City's Traffic Engineering Division. The High Injury Network identifies street segments with an elevated injury and fatality crash level. These segments are targeted for improvements through the City's Vision Zero Plan.



**Southeast Area Plan
Sidewalk Network**

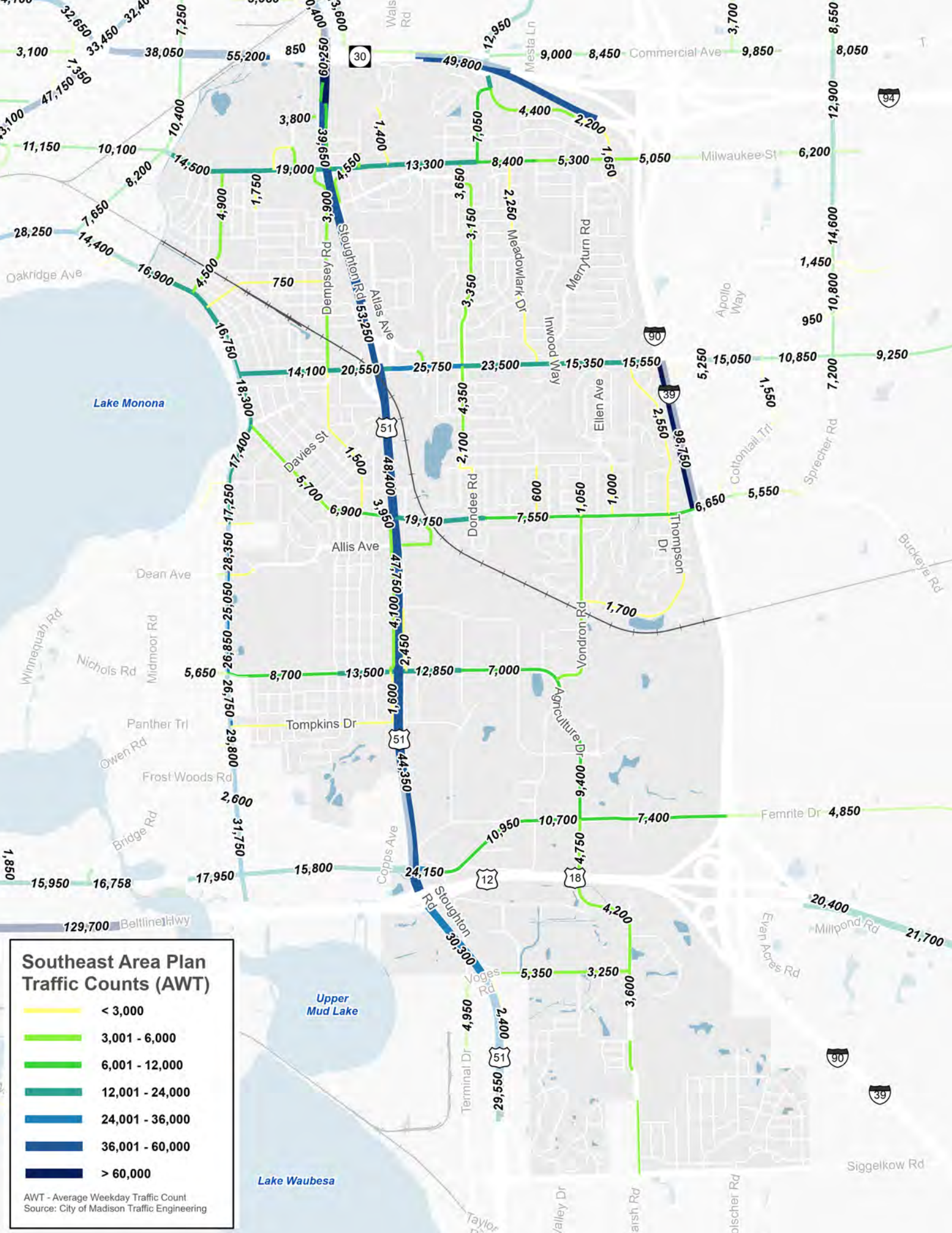
- Sidewalk on one side only
- No sidewalk
- Schools
- Parks and Open Space
- City of Madison Ponds/Greenways

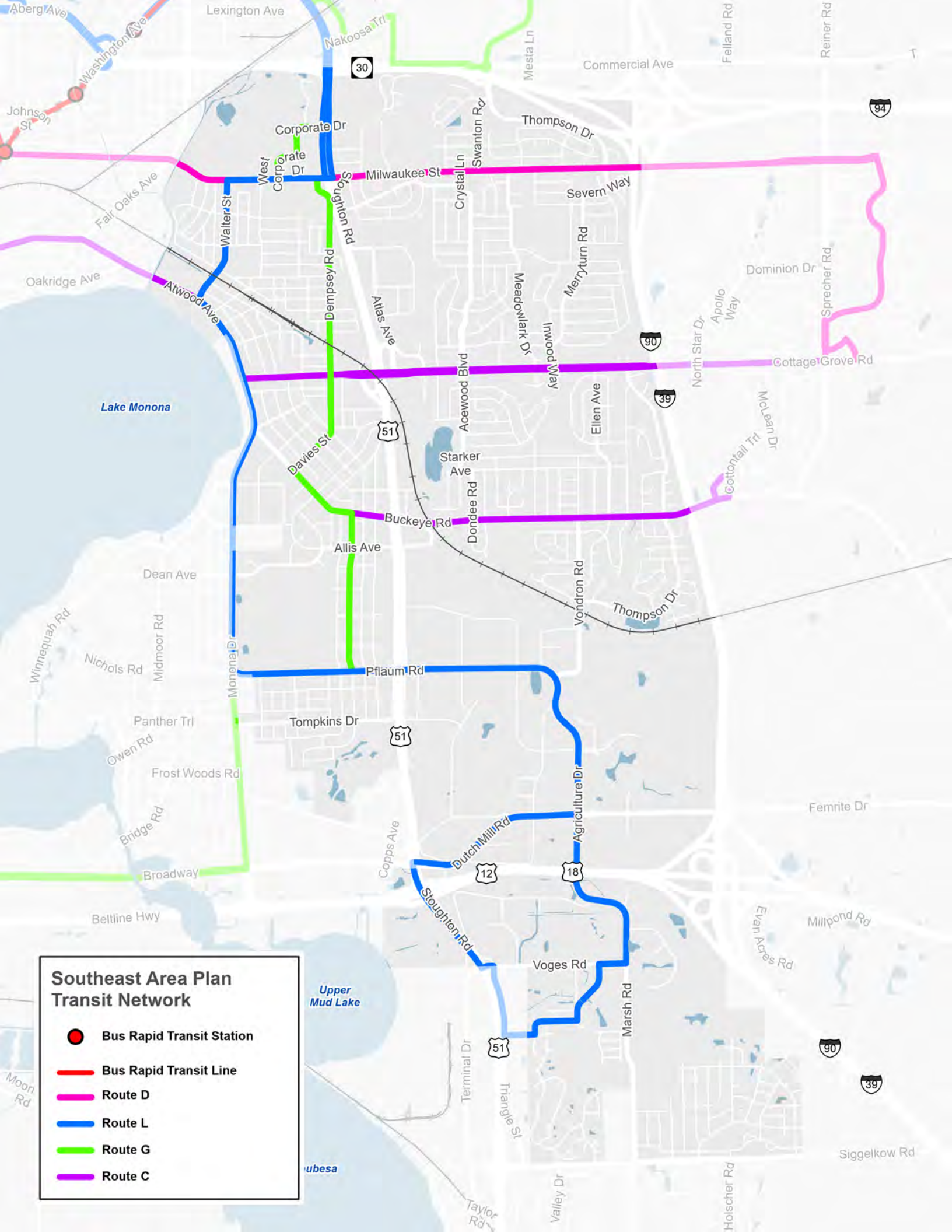


Southeast Area Plan Traffic Counts (AWT)







- < 3,000
- 3,001 - 6,000
- 6,001 - 12,000
- 12,001 - 24,000
- 24,001 - 36,000
- 36,001 - 60,000
- > 60,000

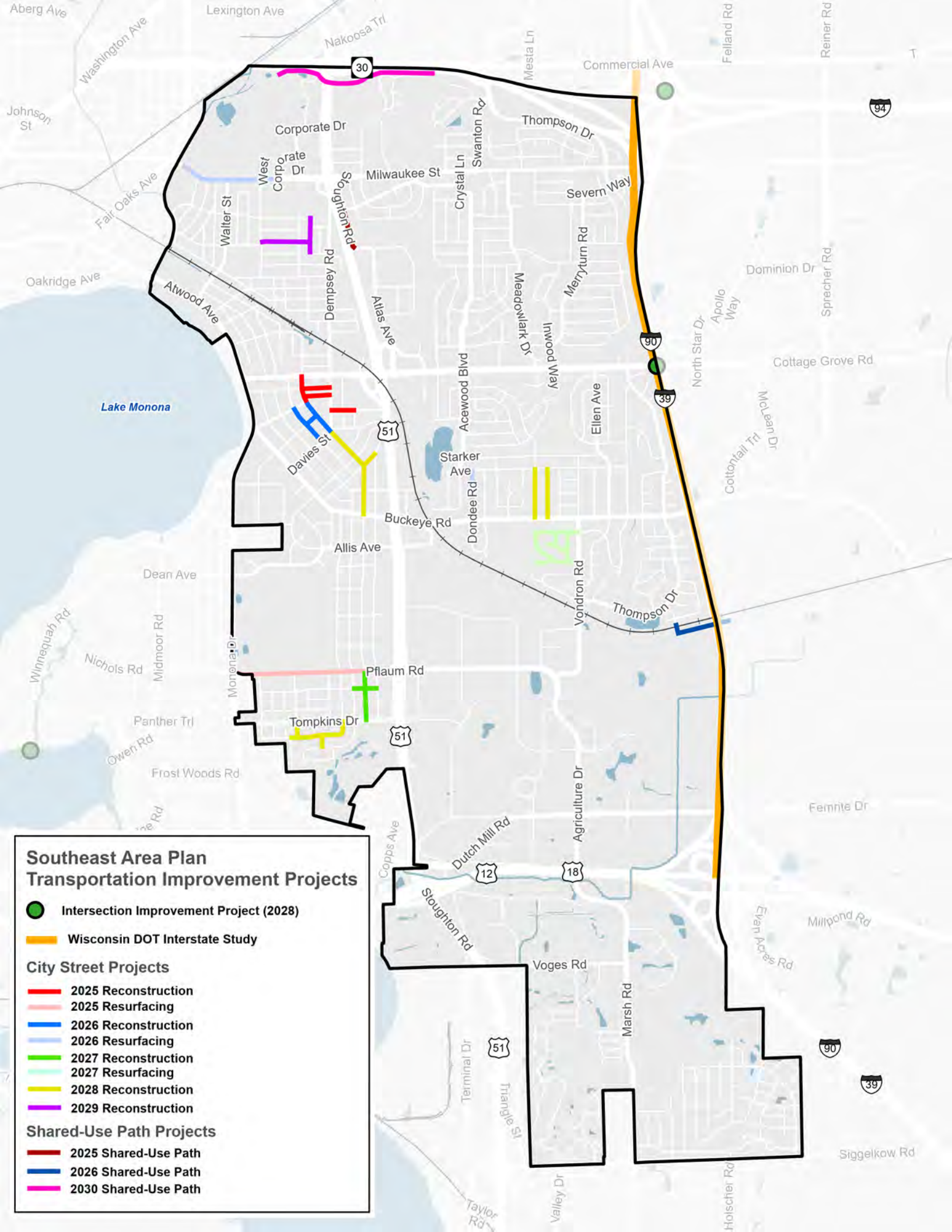
AWT - Average Weekday Traffic Count
 Source: City of Madison Traffic Engineering





Southeast Area Plan Transit Network

-  Bus Rapid Transit Station
-  Bus Rapid Transit Line
-  Route D
-  Route L
-  Route G
-  Route C



Southeast Area Plan Transportation Improvement Projects

- Intersection Improvement Project (2028)
- Wisconsin DOT Interstate Study

City Street Projects

- 2025 Reconstruction
- 2025 Resurfacing
- 2026 Reconstruction
- 2026 Resurfacing
- 2027 Reconstruction
- 2027 Resurfacing
- 2028 Reconstruction
- 2029 Reconstruction

Shared-Use Path Projects

- 2025 Shared-Use Path
- 2026 Shared-Use Path
- 2030 Shared-Use Path