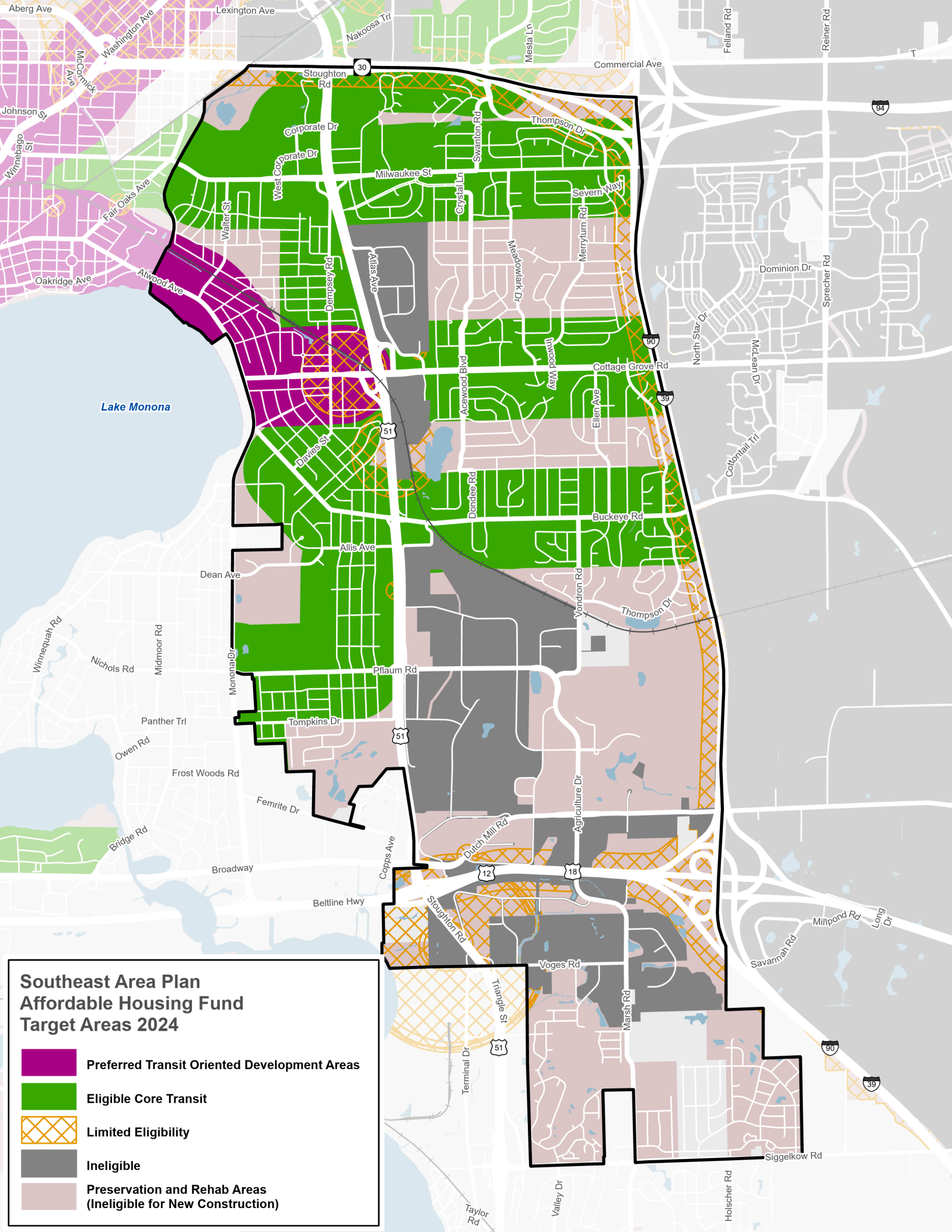
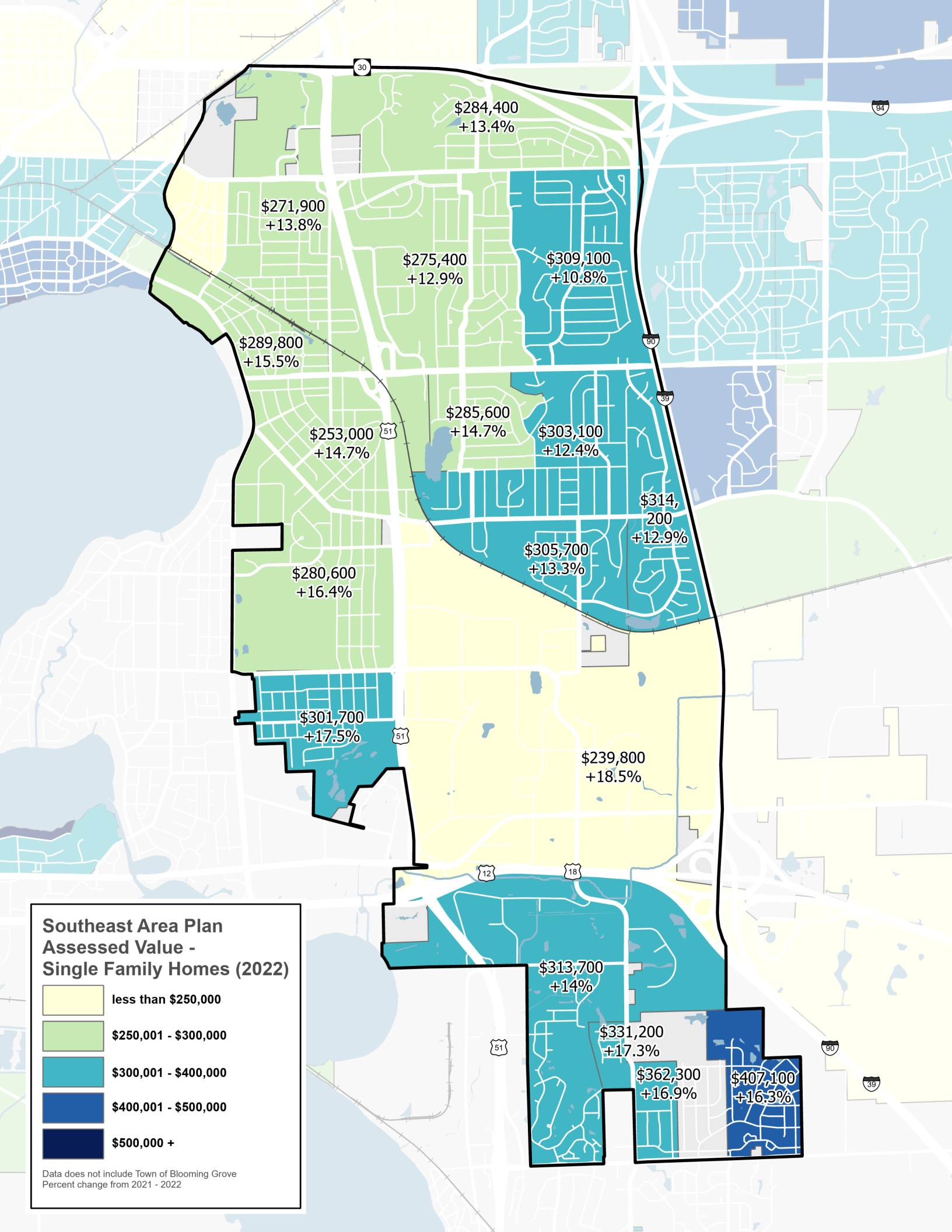
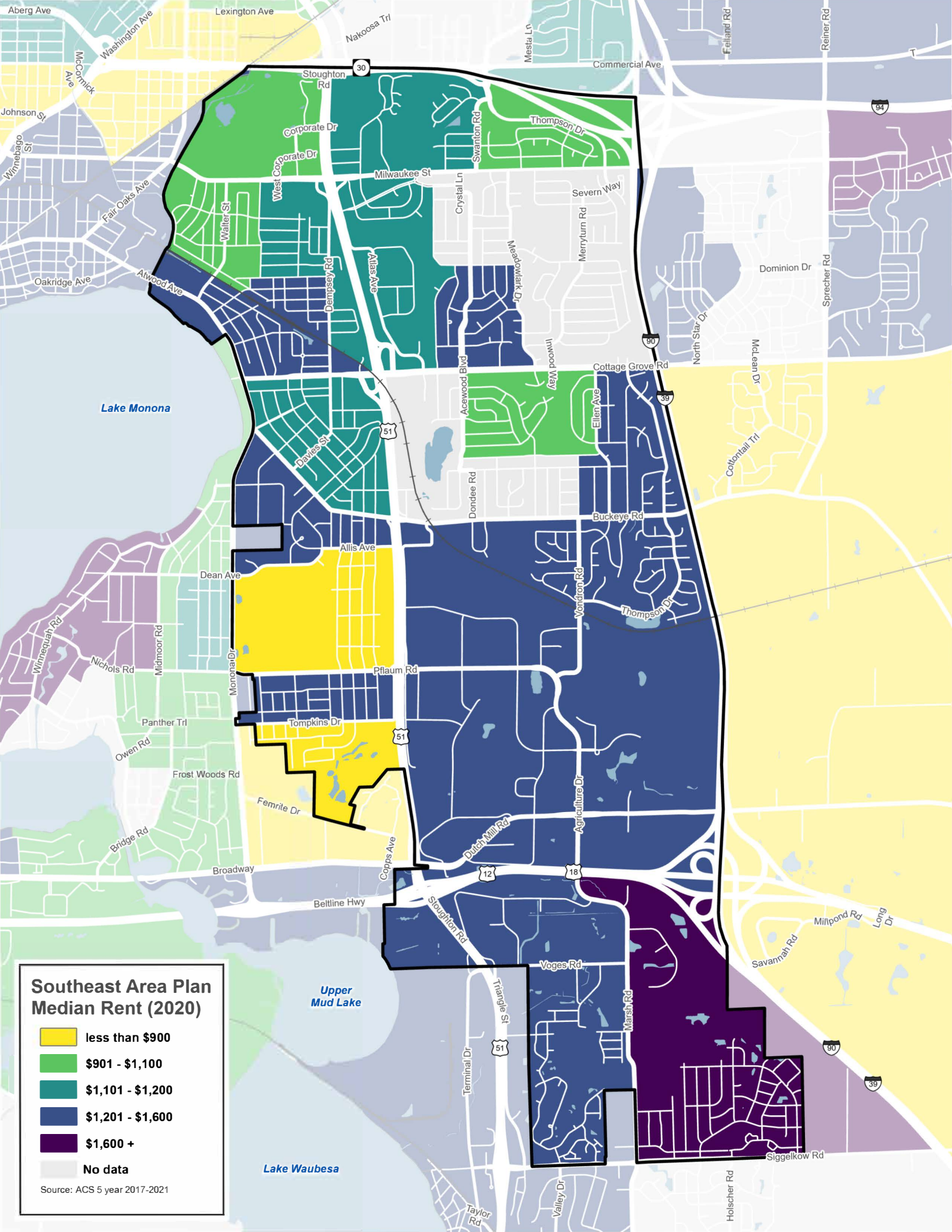


# Southeast Area Plan Affordable Housing Fund Target Areas 2024

- Preferred Transit Oriented Development Areas
- Eligible Core Transit
- Limited Eligibility
- Ineligible
- Preservation and Rehab Areas  
(Ineligible for New Construction)



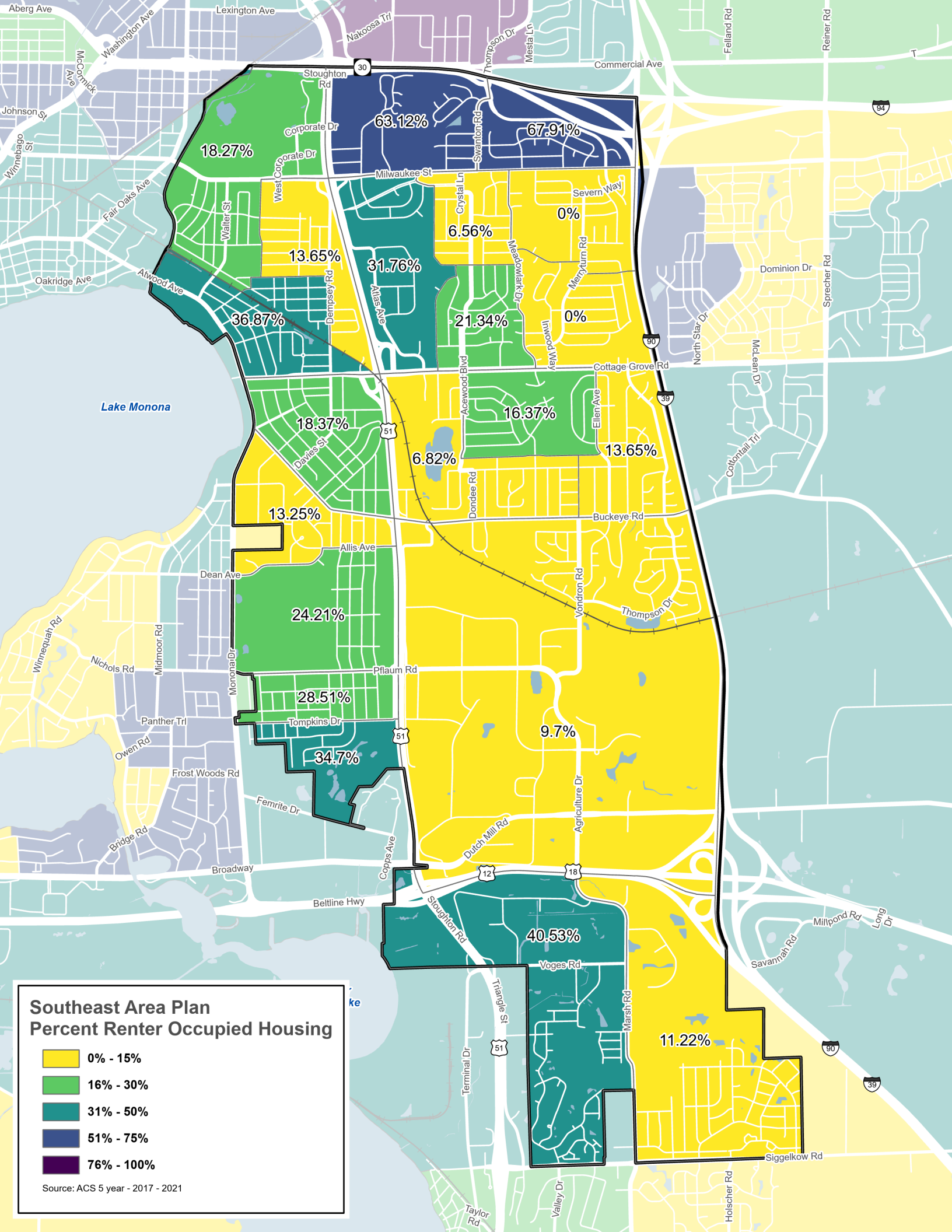




### Southeast Area Plan Median Rent (2020)

- less than \$900
- \$901 - \$1,100
- \$1,101 - \$1,200
- \$1,201 - \$1,600
- \$1,600 +
- No data

Source: ACS 5 year 2017-2021



### Southeast Area Plan Percent Renter Occupied Housing

- 0% - 15%
- 16% - 30%
- 31% - 50%
- 51% - 75%
- 76% - 100%

Source: ACS 5 year - 2017 - 2021

18.27%

63.12%

67.91%

13.65%

31.76%

6.56%

0%

36.87%

21.34%

0%

18.37%

16.37%

6.82%

13.65%

13.25%

24.21%

9.7%

28.51%

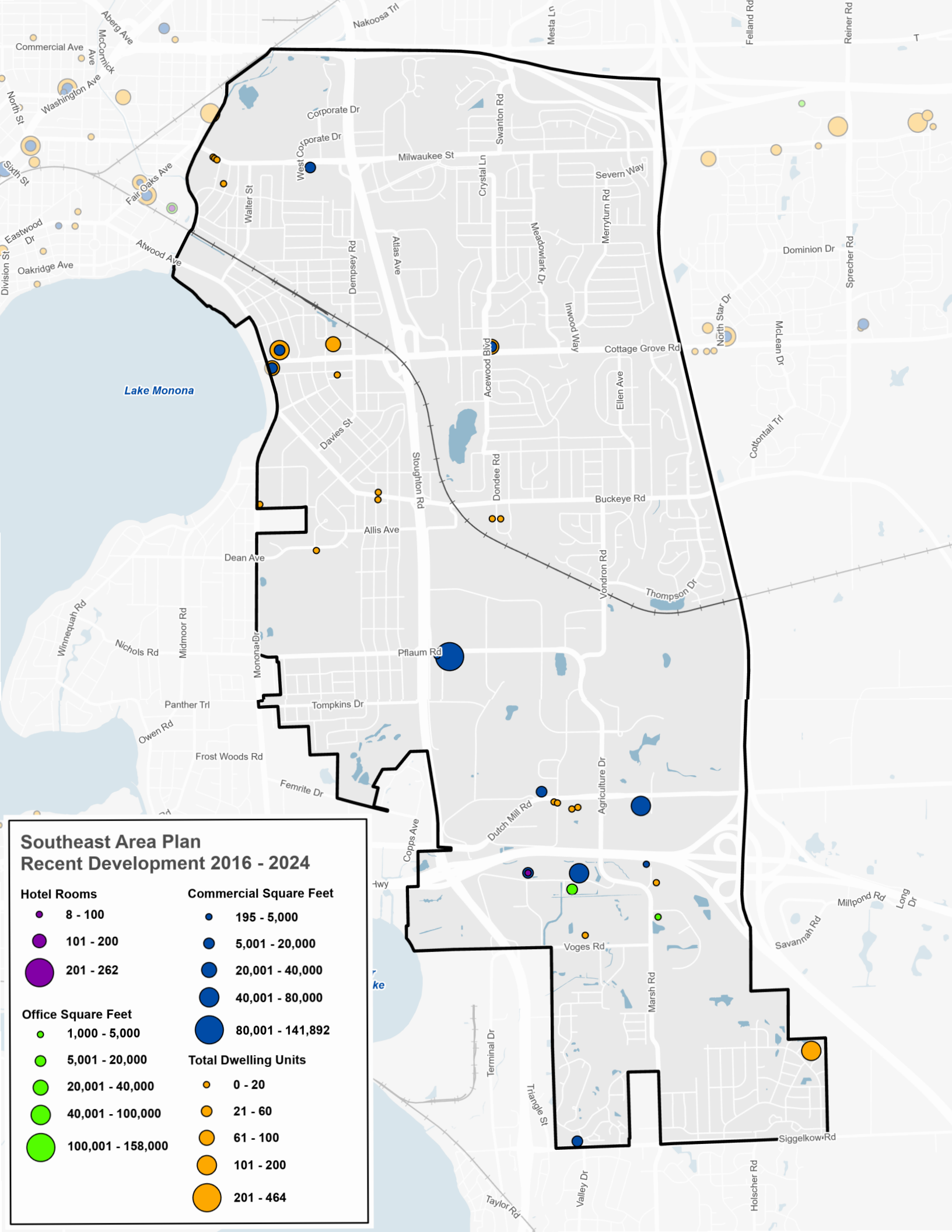
34.7%

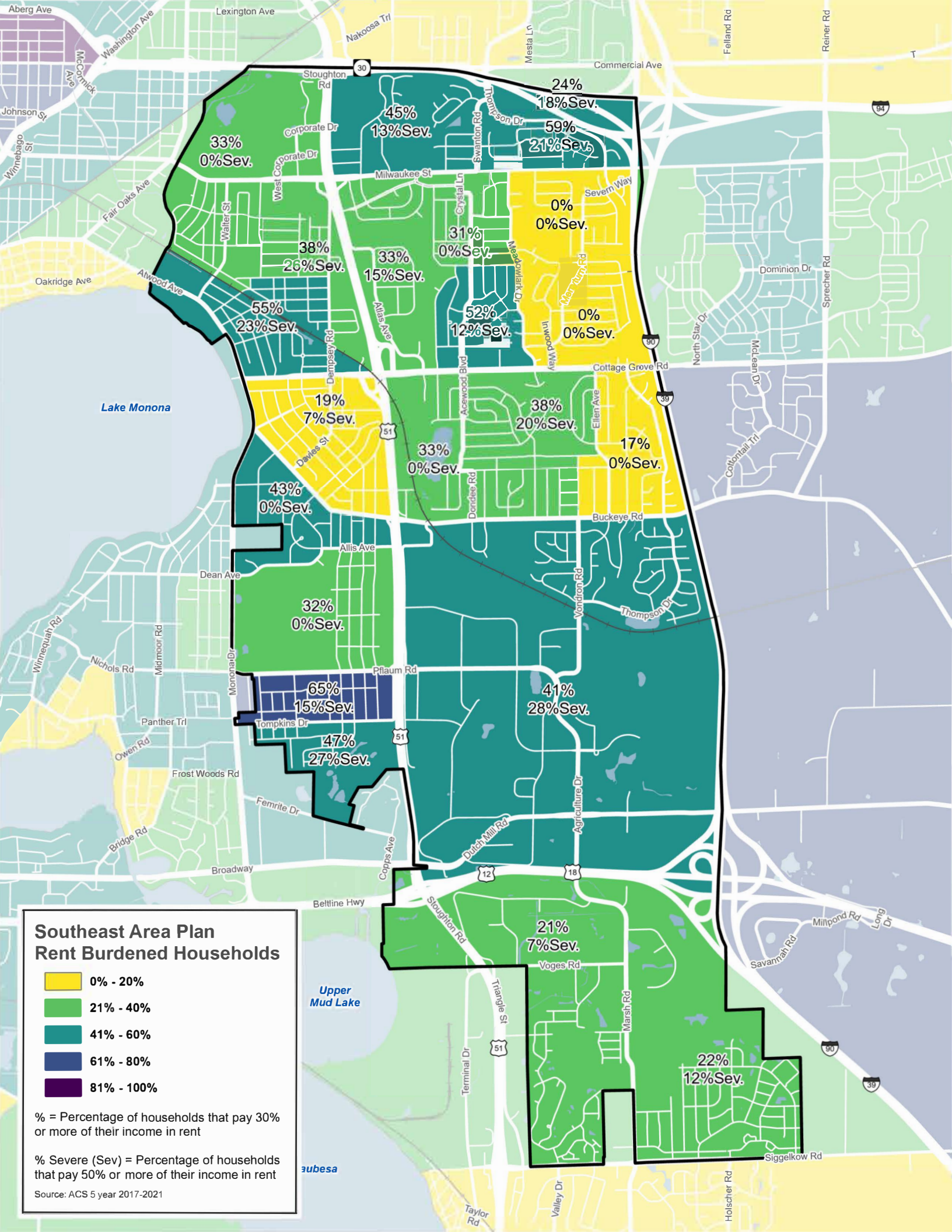
40.53%

11.22%

### Southeast Area Plan Recent Development 2016 - 2024

<b>Hotel Rooms</b>	<b>Commercial Square Feet</b>
● 8 - 100	● 195 - 5,000
● 101 - 200	● 5,001 - 20,000
● 201 - 262	● 20,001 - 40,000
<b>Office Square Feet</b>	● 40,001 - 80,000
● 1,000 - 5,000	● 80,001 - 141,892
● 5,001 - 20,000	<b>Total Dwelling Units</b>
● 20,001 - 40,000	● 0 - 20
● 40,001 - 100,000	● 21 - 60
● 100,001 - 158,000	● 61 - 100
	● 101 - 200
	● 201 - 464





### Southeast Area Plan Rent Burdened Households

- 0% - 20%
- 21% - 40%
- 41% - 60%
- 61% - 80%
- 81% - 100%

% = Percentage of households that pay 30% or more of their income in rent

% Severe (Sev) = Percentage of households that pay 50% or more of their income in rent

Source: ACS 5 year 2017-2021

**0% - 20%**

**21% - 40%**

**41% - 60%**

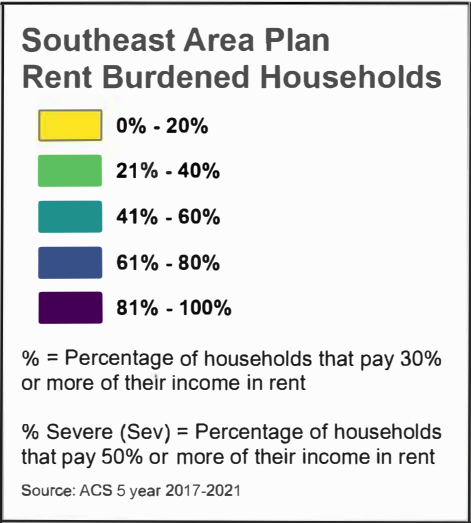
**61% - 80%**

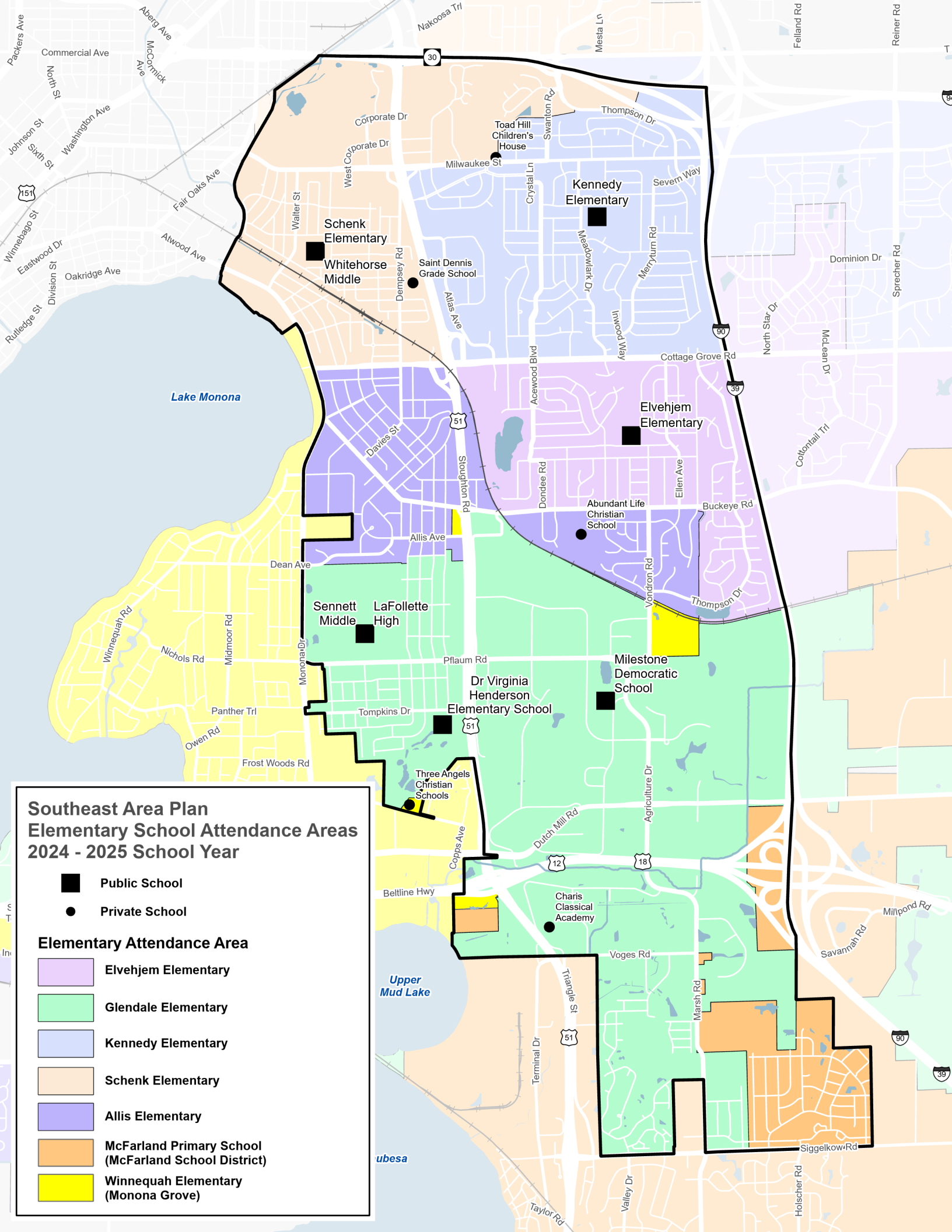
**81% - 100%**

% = Percentage of households that pay 30% or more of their income in rent

% Severe (Sev) = Percentage of households that pay 50% or more of their income in rent

Source: ACS 5 year 2017-2021



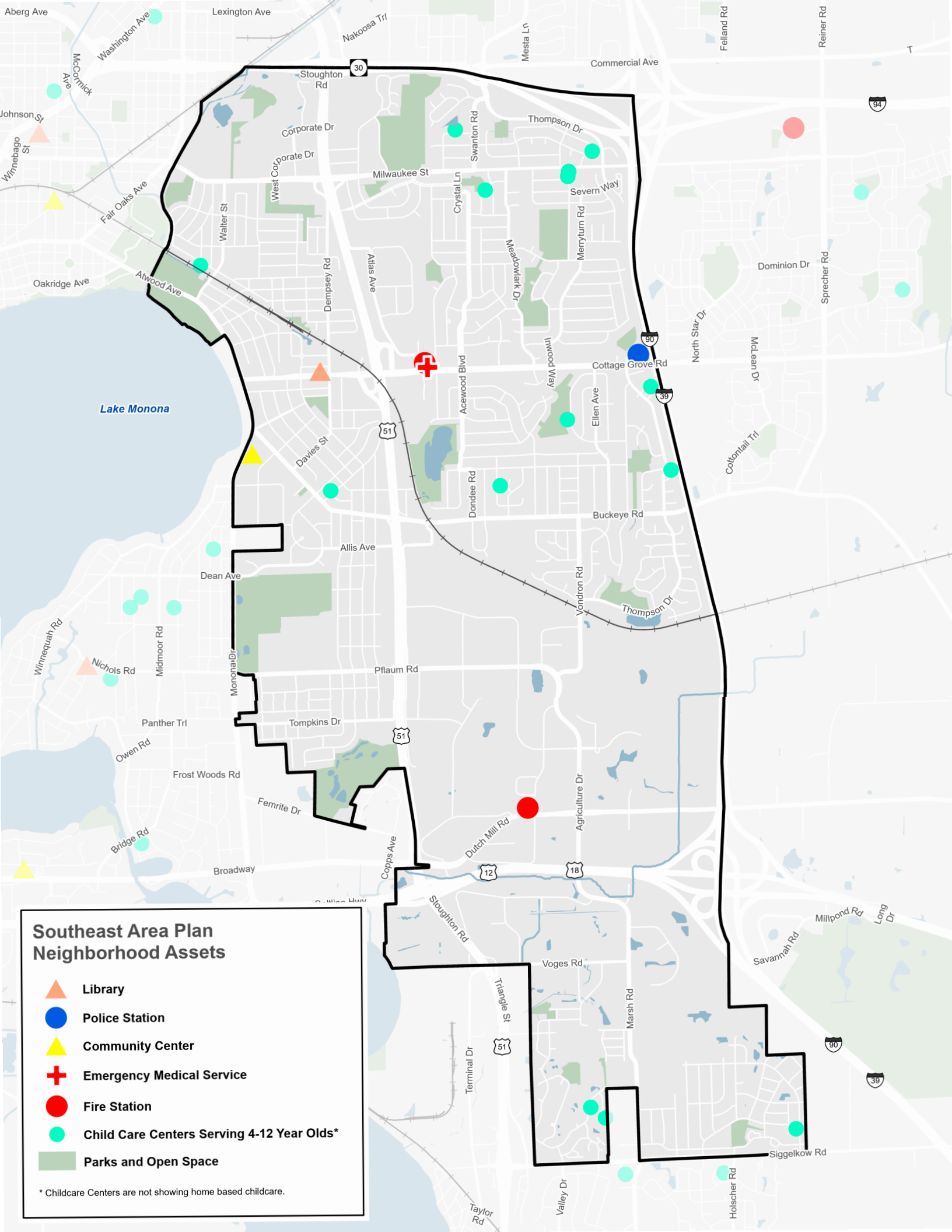


**Southeast Area Plan  
Elementary School Attendance Areas  
2024 - 2025 School Year**

- Public School**
- Private School**

**Elementary Attendance Area**

- Elvehjem Elementary**
- Glendale Elementary**
- Kennedy Elementary**
- Schenk Elementary**
- Allis Elementary**
- McFarland Primary School  
(McFarland School District)**
- Winnequah Elementary  
(Monona Grove)**



### Southeast Area Plan Neighborhood Assets

-  **Library**
-  **Police Station**
-  **Community Center**
-  **Emergency Medical Service**
-  **Fire Station**
-  **Child Care Centers Serving 4-12 Year Olds\***
-  **Parks and Open Space**

\* Childcare Centers are not showing home based childcare.