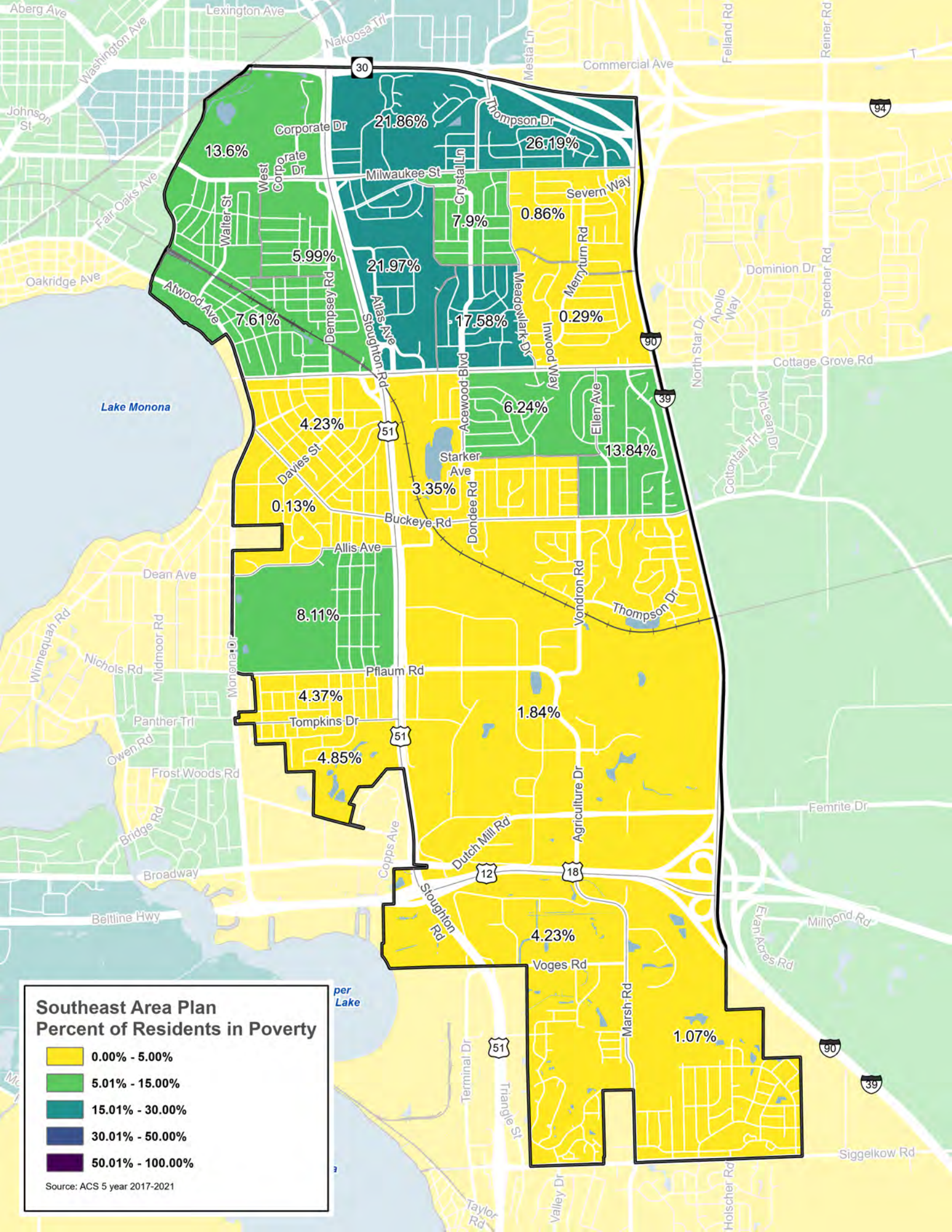


Southeast Area Plan Employment Density

Jobs per Acre

- 0 to 2.0
- 2.1 to 5.0
- 5.1 to 10.0
- 10.1 to 25.0
- 25.1 to 75.0
- 75.1 or Greater

Source: Data Axle, 2021



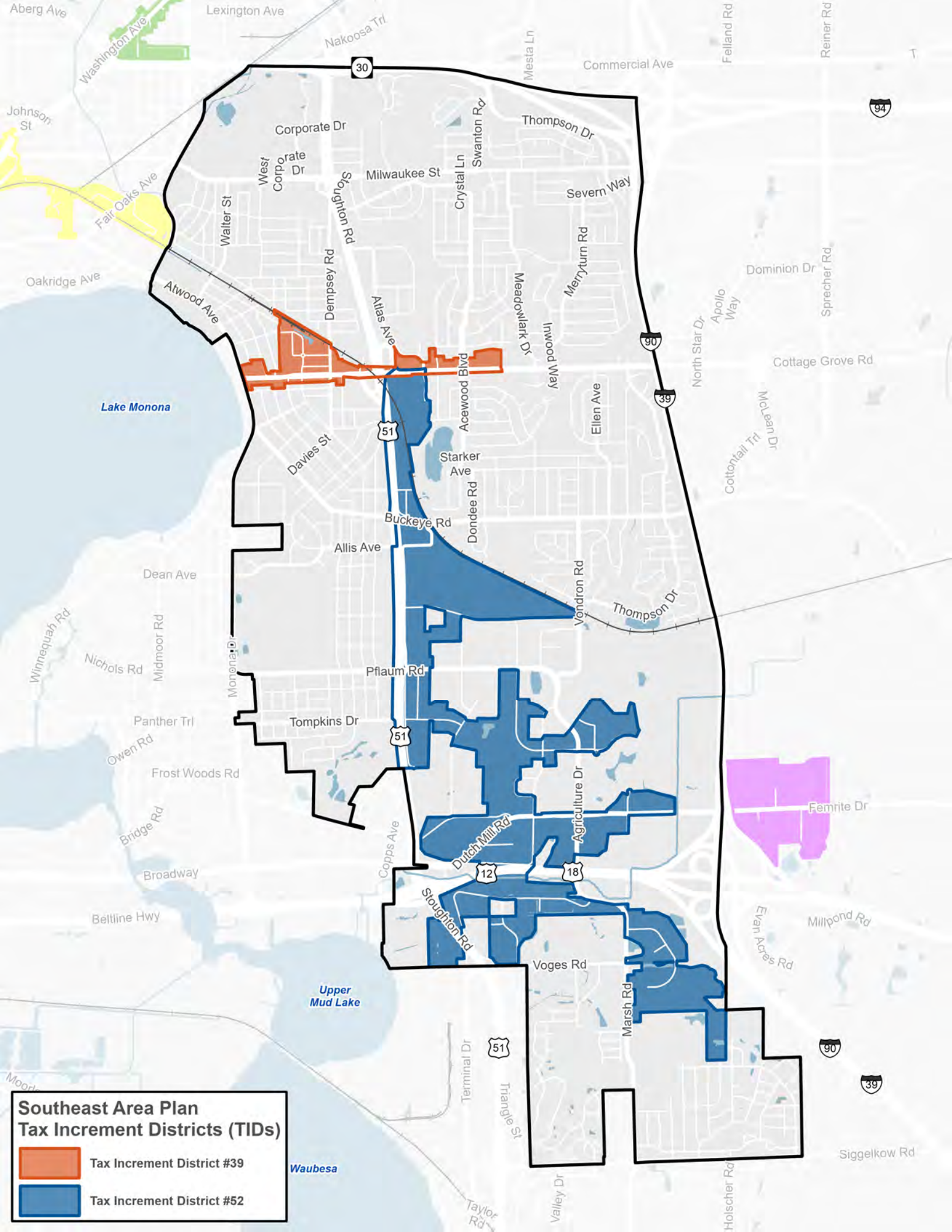
Southeast Area Plan Percent of Residents in Poverty

- 0.00% - 5.00%
- 5.01% - 15.00%
- 15.01% - 30.00%
- 30.01% - 50.00%
- 50.01% - 100.00%

Source: ACS 5 year 2017-2021

per Lake

Census Tract	Percent of Residents in Poverty
Corporate Dr	21.86%
Thompson Dr	26.19%
West Corporate Dr	13.6%
Milwaukee St	7.9%
Severn Way	0.86%
Walter St	5.99%
21.97%	
17.58%	
7.61%	
0.29%	
4.23%	
6.24%	
13.84%	
0.13%	
3.35%	
8.11%	
4.37%	
1.84%	
4.85%	
4.23%	
1.07%	



**Southeast Area Plan
Tax Increment Districts (TIDs)**

-  Tax Increment District #39
-  Tax Increment District #52