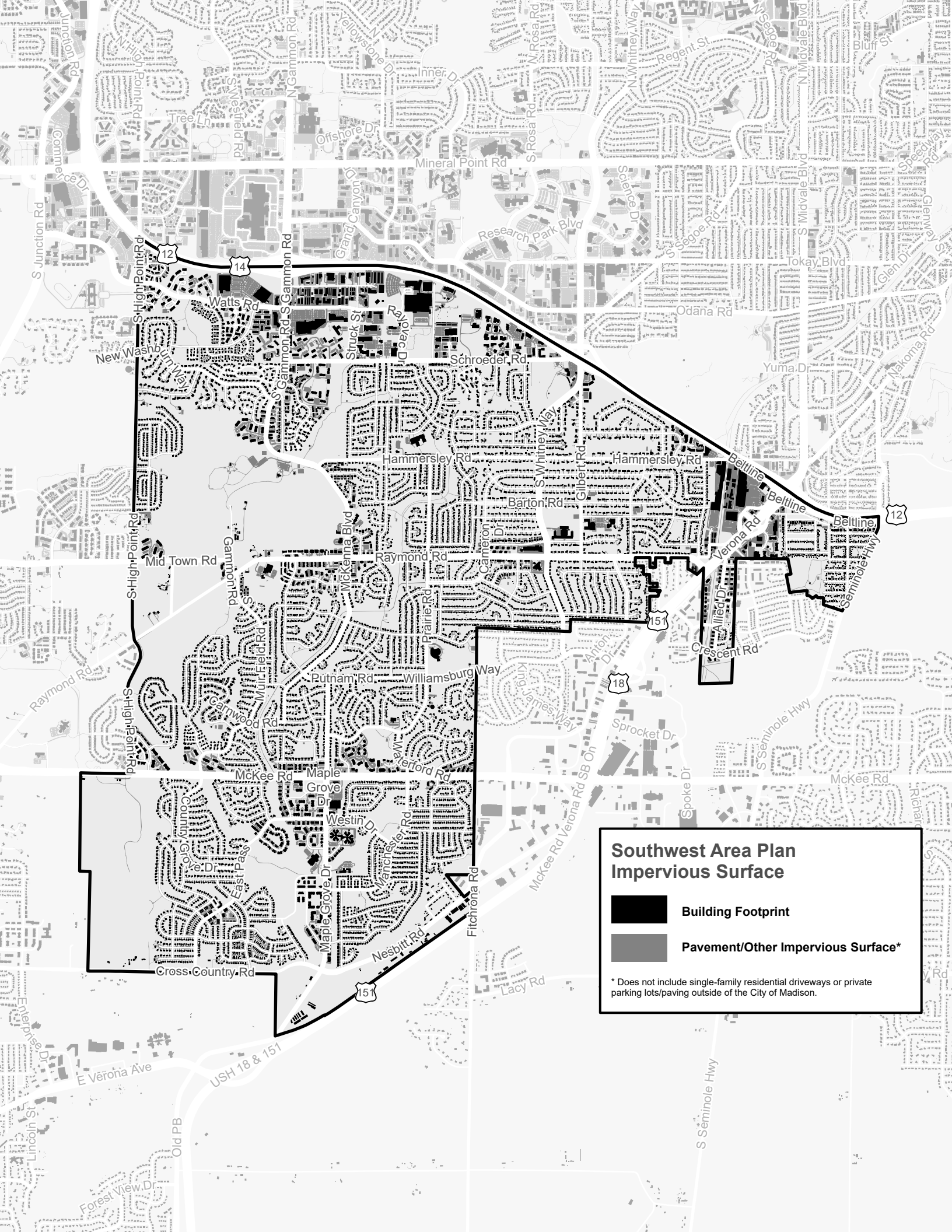



**Southwest Area Plan  
Natural Features: Hydrology**

- Surface Water
- Perennial Stream
- Intermittent Stream
- Wetlands
- Hydric Soils
- Soils with Hydric Inclusions

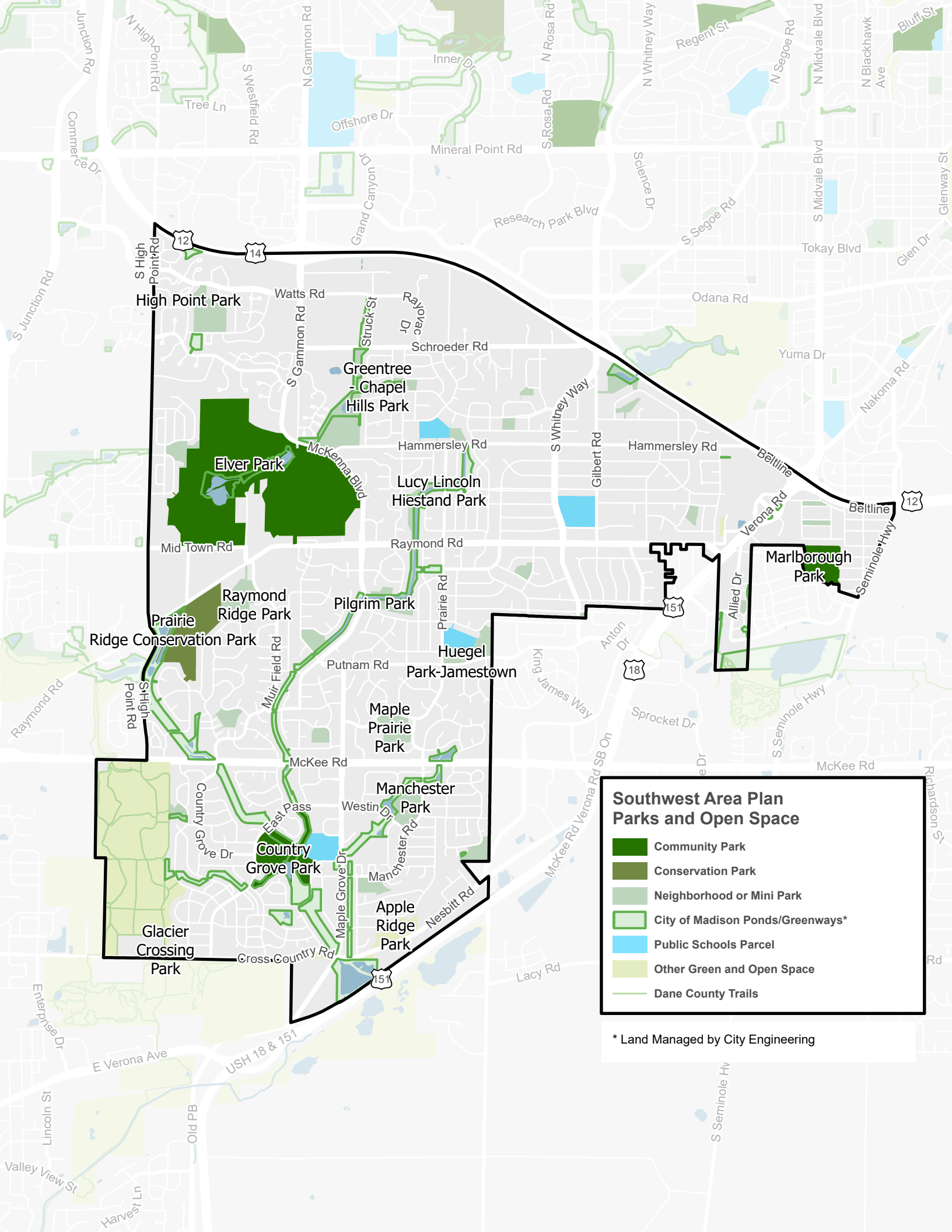




**Southwest Area Plan  
Impervious Surface**

-  Building Footprint
-  Pavement/Other Impervious Surface\*

\* Does not include single-family residential driveways or private parking lots/paving outside of the City of Madison.



**Southwest Area Plan  
Parks and Open Space**

- Community Park
- Conservation Park
- Neighborhood or Mini Park
- City of Madison Ponds/Greenways\*
- Public Schools Parcel
- Other Green and Open Space
- Dane County Trails

\* Land Managed by City Engineering



