

Growing Resilience



MADISON

Jessica Price, PhD
Sustainability and Resilience Manager
jprice2@cityofmadison.com

Photo by Devlik Photography
Mural by Liubov Szwako

Scaling Resilience



Photo: Abigail Becker

City Resilience

Resilience at the city scale requires action in multiple addressed from multiple angles.

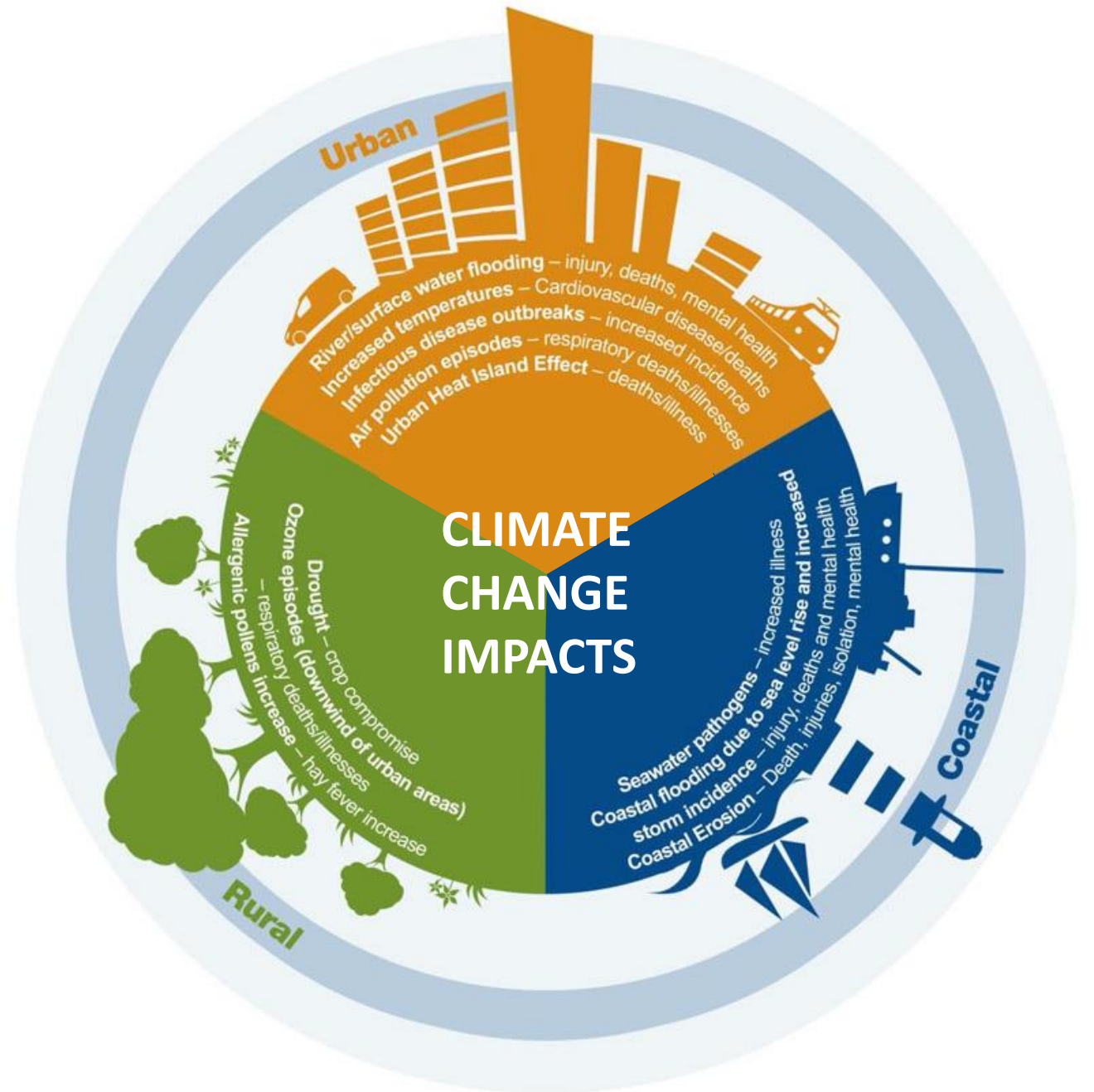
Scaling up resilience requires us to build equity and diversity into our actions.





Climate Resilience

The ability of an individual, household, population group or system to anticipate, absorb, and recover from impacts of climate change and stresses without compromising (and potentially enhancing) long-term prospects.



Climate Adaptation and Transformation

- **Adaptation** involves adopting deliberate actions and planned decisions to increase our ability to respond to existing and future climatic shocks and stresses.
- **Transformation** involves implementing fundamental changes to significantly reduce our vulnerability to climate change and create a system that better serves everyone.
- **Equitable climate resilience** means embedding equity into planning and implementation, addressing the disproportionate impacts that affect communities at the forefront of climate change, and working to dismantle barriers that have prevented communities from thriving.

Climate Resilience in Action

Green
infrastructure

Affordable
housing

Urban tree
canopy

Infrastructure
designed for
future climate

Equitable
access to info
& resources

Diverse &
healthy local
economy

Community
gathering
spaces

Access to
health care &
health equity

Preparedness
for extreme
weather

Socially
connected
residents

Poor air
quality action
plan

Energy
efficient
buildings

Healthy urban
ecosystems

Locally
sourced food
& goods

Multimodal
low carbon
transportation

Growing green
economy &
workforce

Inclusive
planning &
action

Resources for
forefront
communities

Mural by Caetano Cal



Please reach out! Email - jprice2@cityofmadison.com Phone -608 267 1992