



Finance Department

David P. Schmiedicke, Finance Director

City-County Building, Room 406
210 Martin Luther King, Jr. Boulevard
Madison, Wisconsin 53703
Phone: (608) 266-4521
Fax: (608) 266-5948

finance@cityofmadison.com
www.cityofmadison.com/finance/purchasing

Purchasing Services

DATE: Wednesday, November 13, 2024

RE: **ADDENDUM 2**
13102-0-2024-TJ
2025-2026 Ecological Restoration and Maintenance

Notice to All Bidders:

This addendum is to add 10 terrace rain gardens to RFB 13102-0-2024-TJ. Please see attached maps and form D-2 (excel work book) for additional bid items.

Bidders must acknowledge receipt of this addendum accordingly on RFP Form B, Receipt Forms and Submittal Checklist.

Please direct any other questions to the Purchasing contact person below.

Tammy Jones
City of Madison Purchasing Services
tjones@cityofmadison.com

TOTAL AREA = 2760 SF 1110 SPRING HARBOR DR

SPRING HARBOR MIDDLE SCHOOL

TOP OF BASIN (2' OFFSET FROM SIDEWALK)

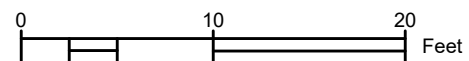
5:1 SIDE SLOPE

DRILLED UNDERDRAIN SHALL BE PLACED IN PEA GRAVEL (6" THICKNESS AROUND ALL SIDES)

GRADING LIMITS

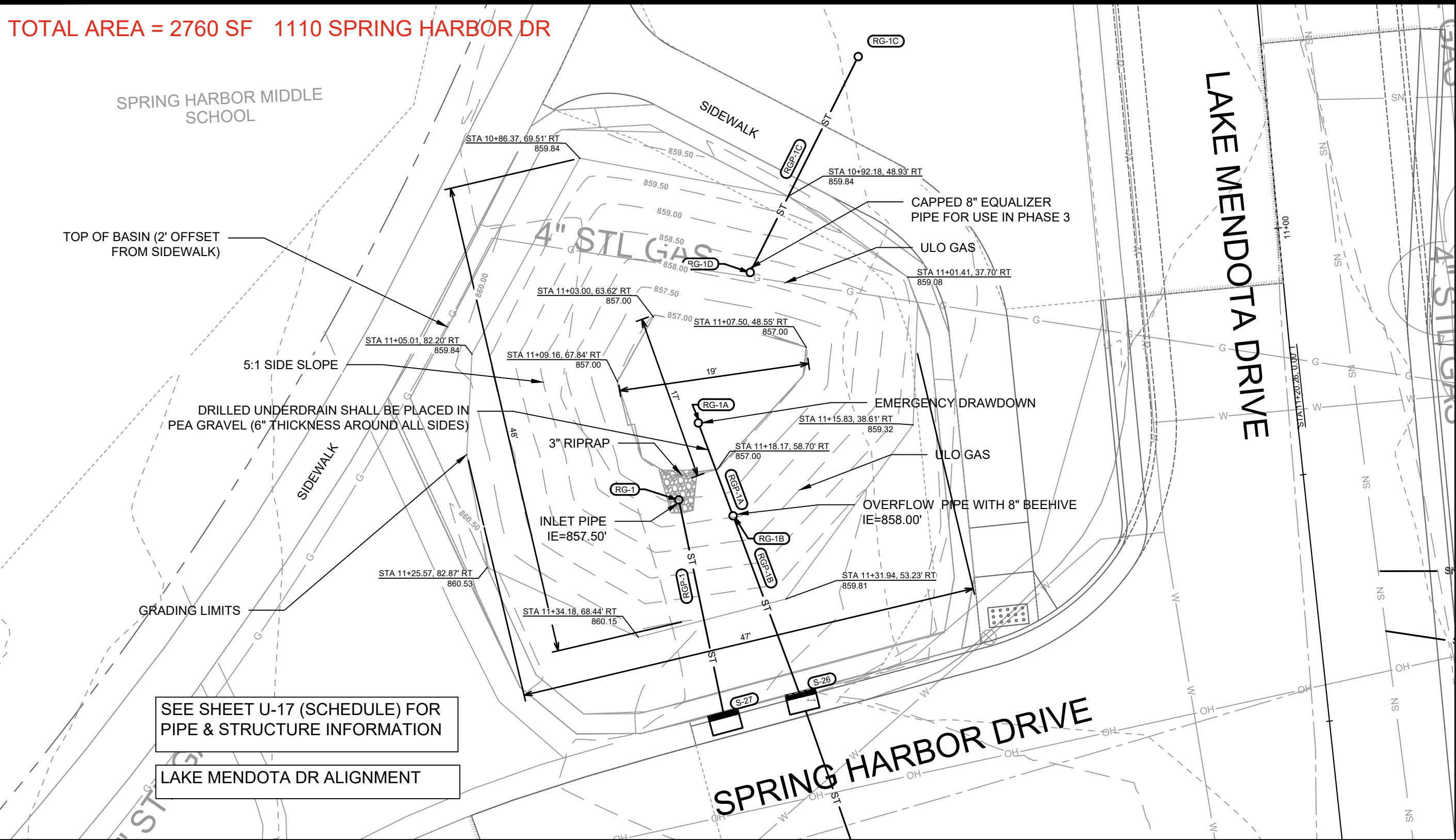
SEE SHEET U-17 (SCHEDULE) FOR PIPE & STRUCTURE INFORMATION

LAKE MENDOTA DR ALIGNMENT



NOTES:

1. ALL AREAS WITHIN GRADING LIMITS TO RECEIVE CLASS I, TYPE A - ORGANIC EROSION CONTROL MATTING IF COMPLETED OUTSIDE OF GROWING SEASONS, SEE SPECIAL PROVISIONS
2. DO NOT SEED WITHIN SIDE SLOPES OR BOTTOM OF BASIN.



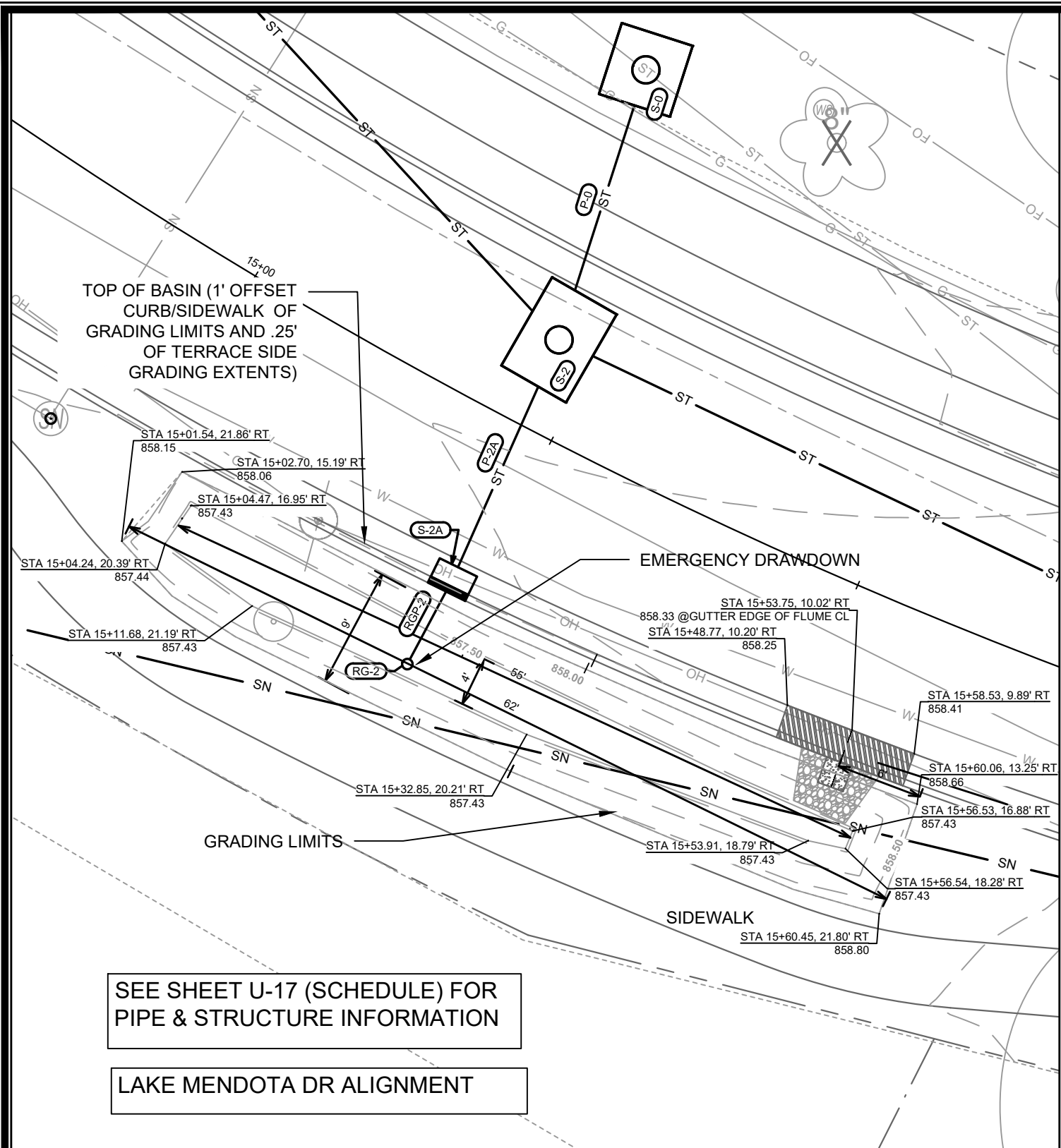
ADD 1	PLAN UPDATE	2/21/23	PDG
MARK	REVISION	DATE	BY
Designed By:	PDG	Date: 2/21/2023 12:37 PM	Scale:
14082	14082		GI-1

14082
MADISON, WI
8622
CONTRACT NO:

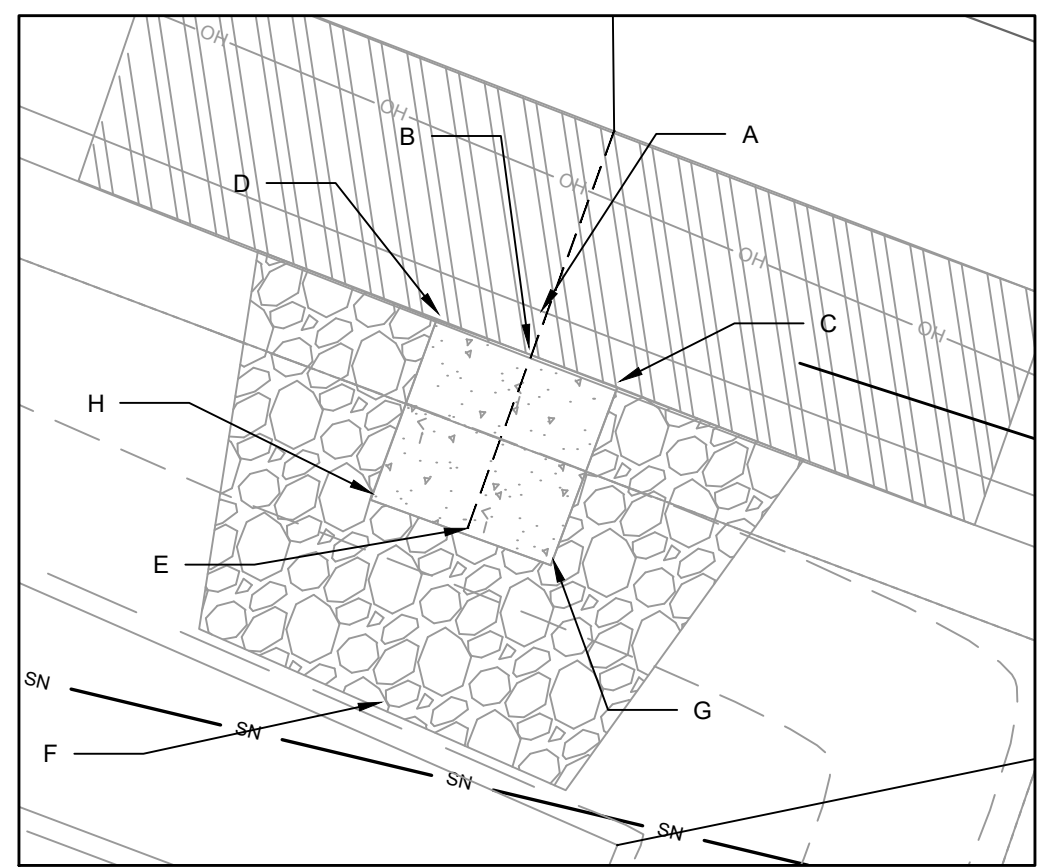
GREENINF - 1110 SPRING HARBOR DR
LAKE MENDOTA DR ASSESSMENT DISTRICT - 2023
M:\DESIGN\Projects\14082\CAD\sewers\14082SWR-GreenInf_V3.dwg



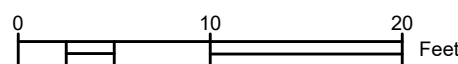
14082
GI-1



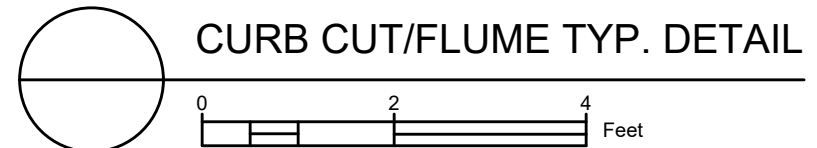
DETAIL POINT ELEVATIONS/DESCRIPTIONS			
Point	Point Description	Distance from Existing FlowLine (ft)	Elevation
	Ex. EOG at CL of Flume	+0.125	858.41
A	Standard Gutter Flow Line at CL of Flume	0	858.29
B	o. Gutter Flow Line at CL of Flume Meeting Cu	-.17'(2")	858.12
C	Edge of Flume @ Gutter (Uphill)	varies	858.24
D	Edge of Flume @ Gutter (Downhill)	varies	858.18
E	Bottom of Flume at CL	-.33'(4")	857.95
F	Bottom of Stone/Pond	-.5'(6")	857.43
G	Edge of Flume @ Bottom of Basin (Uphill)	varies	858.07
H	Edge of Flume @ Bottom of Basin (Downhill)	varies	858.02



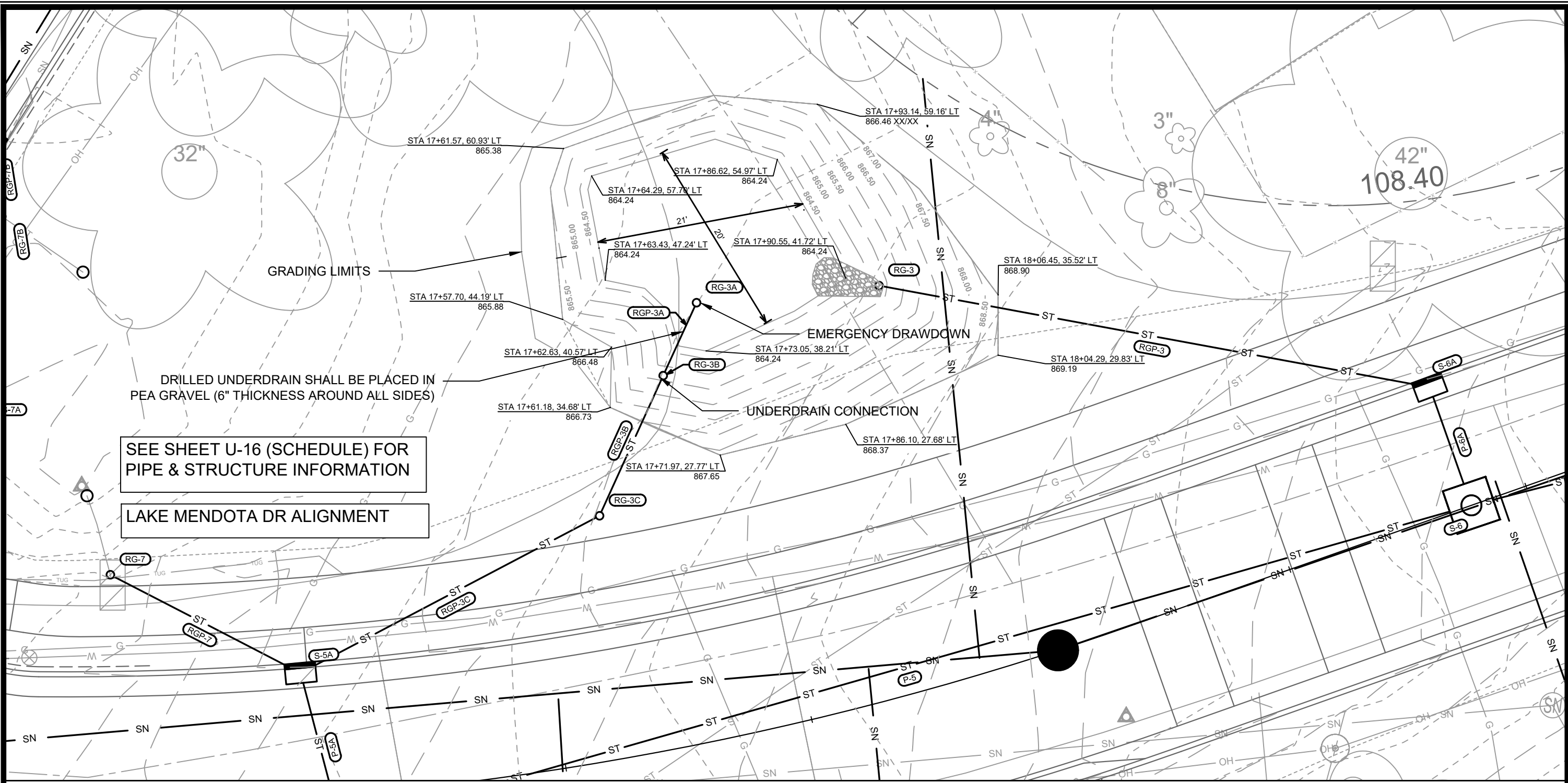
TOTAL AREA = 540 SF 5209 LAKE MENDOTA DR



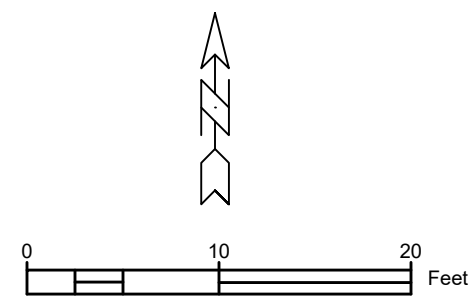
NOTES:
 1. ALL AREAS WITHIN GRADING LIMITS TO RECEIVE CLASS I, TYPE A - ORGANIC EROSION CONTROL MATTING IF COMPLETED OUTSIDE OF GROWING SEASONS, SEE SPECIAL PROVISIONS
 2. ALL AREAS OUTSIDE OF TOP OF BASIN SHALL RECEIVE TERRACE SEED MIX, DO NOT SEED WITHIN SIDE SLOPES OR BOTTOM OF BASIN.
 3. SEE DETAIL D-1 AND D-2.



14082	ADD.1	PLAN UPDATES	2/21/23	PDG	BY
14082	MARK	REVISION		DATE	
14082	DESIGNED BY	PDG	DATE: 2/21/2023	12:38 PM	Scale:
14082	CONTRACT NO:		8622		
GREENINF - 5209 LAKE MENDOTA DR		MADISON, WI			
LAKE MENDOTA DR ASSESSMENT DISTRICT - 2023		CONTRACT NO: 8622			
M:\DESIGN\Projects\14082\CAD\Sewers\14082SWR-GreenInf_V3.dwg		GI-2			
CITY OF MADISON WISCONSIN		14082			
		GI-2			



TOTAL AREA = 1260 SF 5140 LAKE MENDOTA DR



- NOTES:
1. ALL AREAS WITHIN GRADING LIMITS TO RECEIVE CLASS I, TYPE A - ORGANIC EROSION CONTROL MATTING IF COMPLETED OUTSIDE OF GROWING SEASONS, SEE SPECIAL PROVISIONS
 2. DO NOT SEED WITHIN SIDE SLOPES OR BOTTOM OF BASIN.
 3. SEE DETAIL D-1 AND D-2.

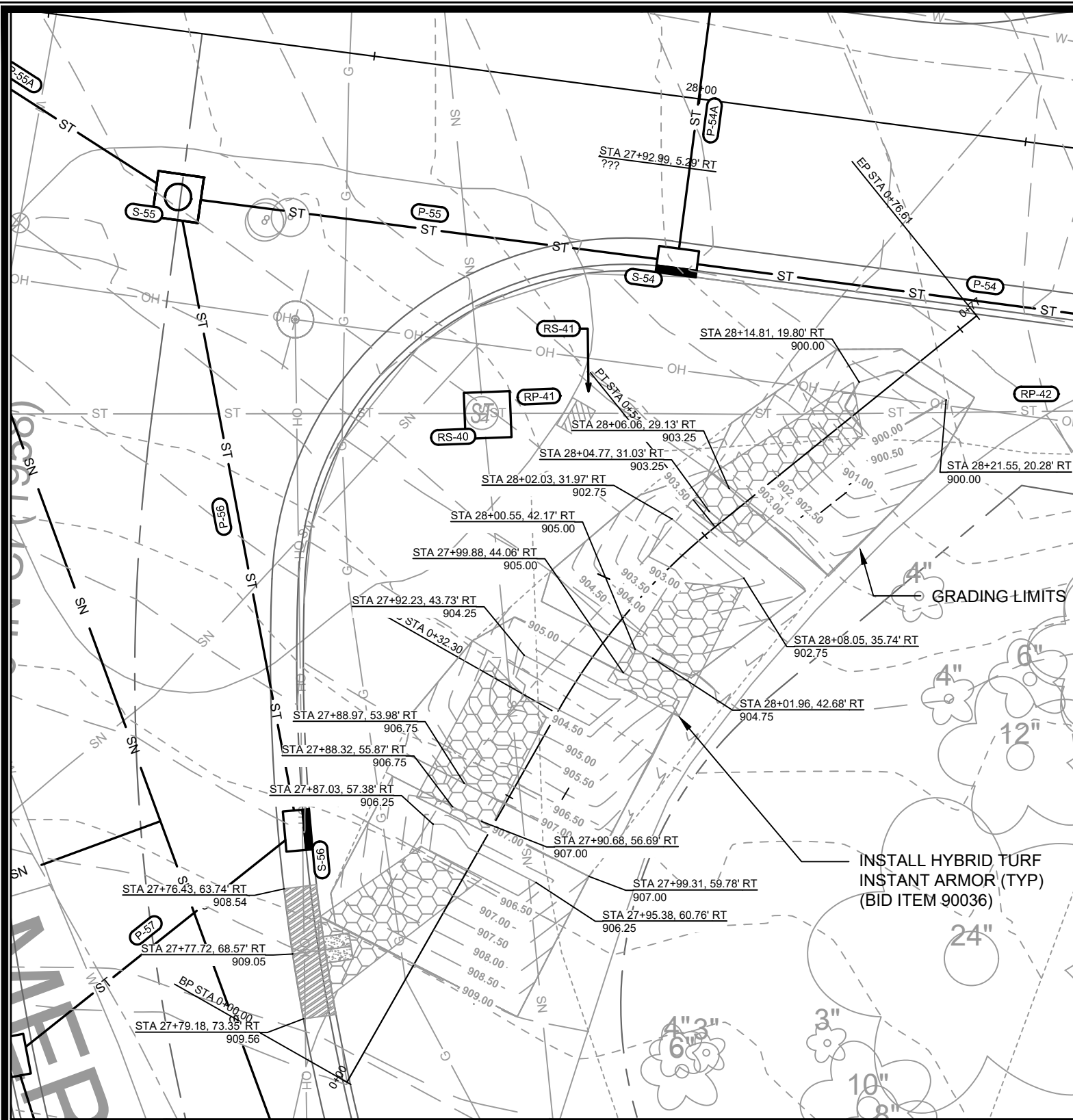
ADD 1	PLAN UPDATES	2/21/23	PDG
MARK	REVISION	DATE	BY
Designed By: PDG			Date: 2/21/2023 12:38 PM
Scale:			GI-3
14082			14082

14082
MADISON, WI
CONTRACT NO: 8622

GREENINF - TURTLE PARK
LAKE MENDOTA DR ASSESSMENT DISTRICT - 2023
M:\DESIGN\Projects\14082\CAD\Servers\14082SWR-GreenInf_V3.dwg

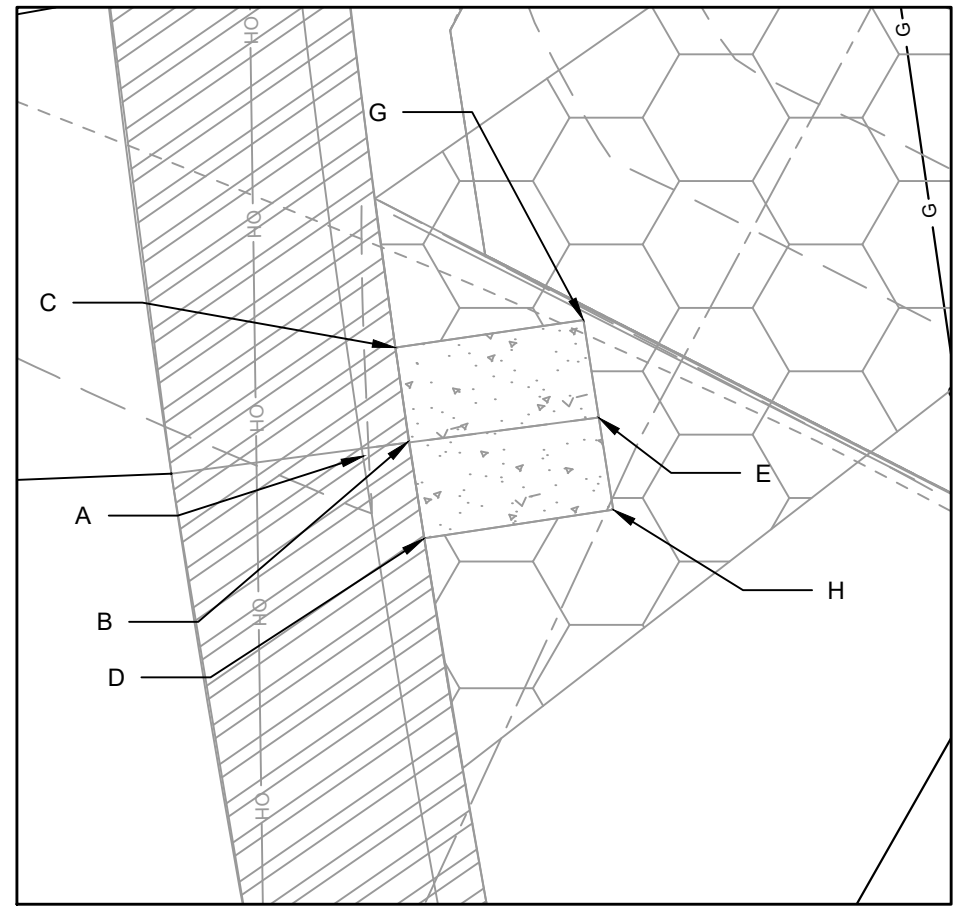


14082
GI-3

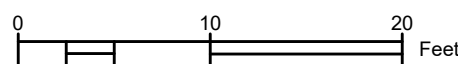


DETAIL POINT ELEVATIONS/DESCRIPTIONS

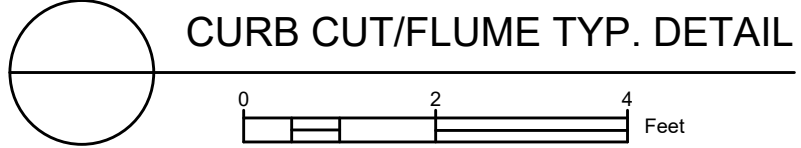
Point	Point Description	Distance from Existing FlowLine (ft)	Elevation
	Ex. EOG at CL of Flume	+0.125	909.05
A	Standard Gutter Flow Line at CL of Flume	0	908.93
B	Pro. Gutter Flow Line at CL of Flume Meeting Curb	-.17'(2")	908.76
C	Edge of Flume @ Gutter (Uphill)	varies	908.67
D	Edge of Flume @ Gutter (Downhill)	varies	908.47
E	Bottom of Flume at CL	-.33'(4")	908.59
G	Edge of Flume @ Bottom of Basin (Uphill)	varies	908.50
H	Edge of Flume @ Bottom of Basin (Downhill)	varies	908.30



TOTAL AREA = 1000 SF 5025 LAKE MENDOTA DR

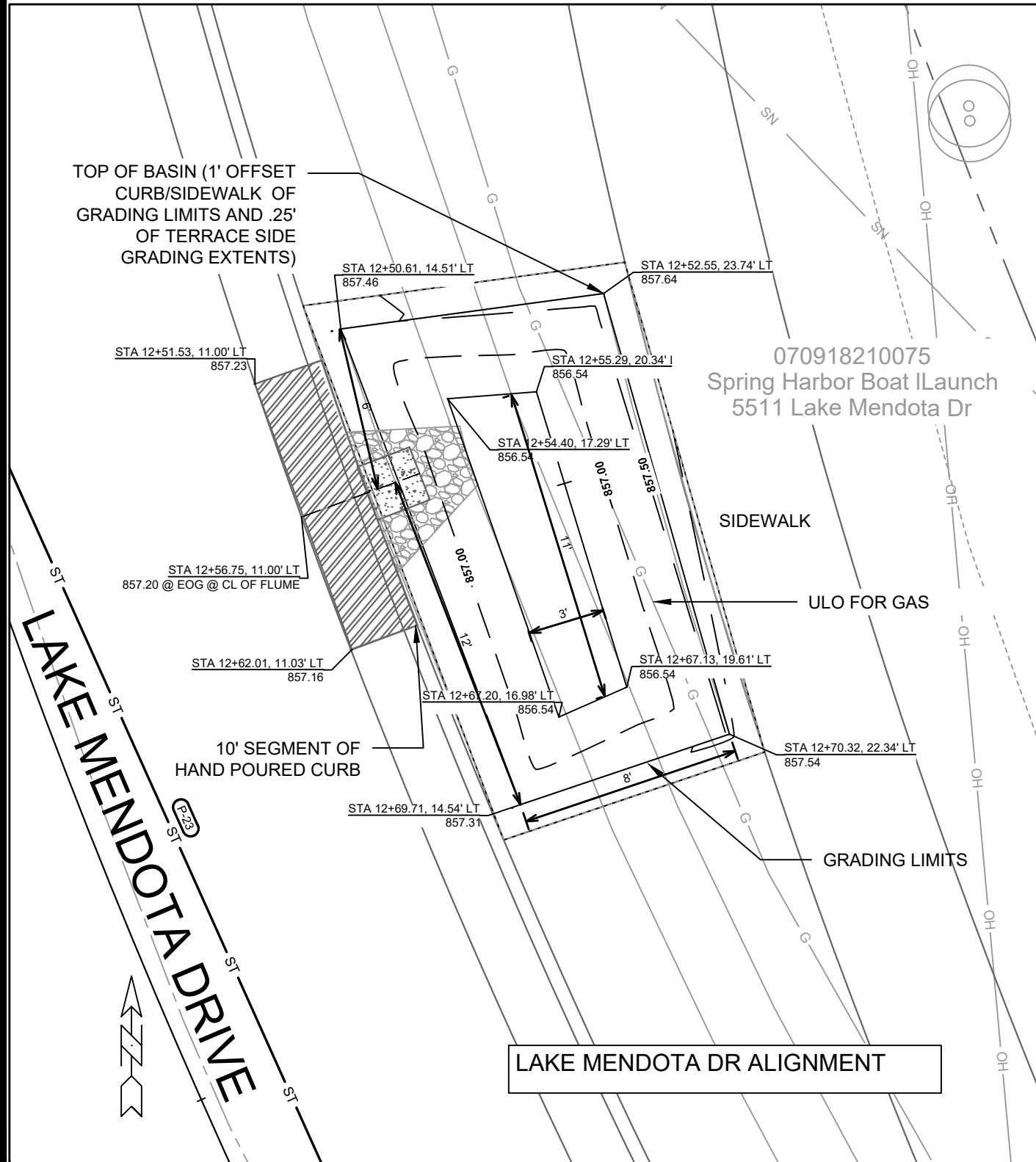


- NOTES:
- ALL AREAS WITHIN GRADING LIMITS TO RECEIVE CLASS I, TYPE A - ORGANIC EROSION CONTROL MATTING IF COMPLETED OUTSIDE OF GROWING SEASONS, SEE SPECIAL PROVISIONS
 - ALL AREAS OUTSIDE OF TOP OF BASIN SHALL RECEIVE TERRACE SEED MIX, DO NOT SEED WITHIN SIDE SLOPES OR BOTTOM OF BASIN.
 - SEE DETAIL D-1 AND D-2.

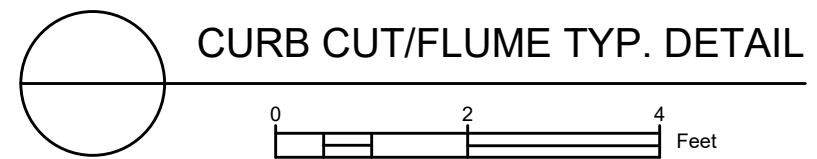
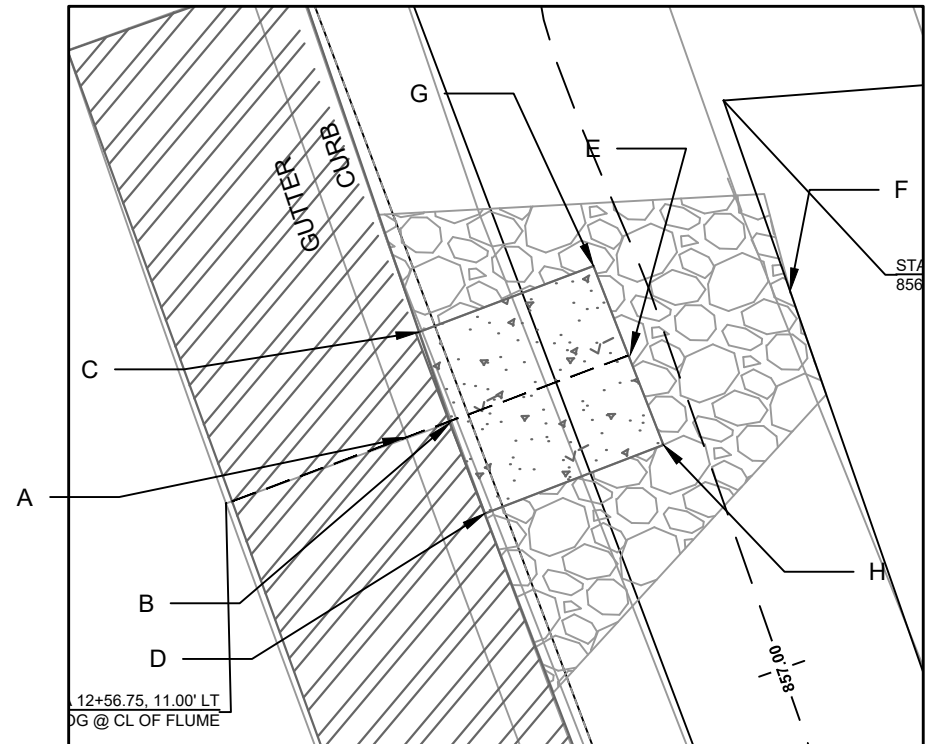


14082	14082	14082	14082
ADD.1	PLAN UPDATES	02/21/23	PDG
MARK	REVISION	DATE	BY
Designed By: PDG	Date: 2/21/2023 12:38 PM	Scale:	GI-4
14082	MADISON, WI	8622	CONTRACT NO.:
GREENINF - MERRILL SPRINGS RD	LAKE MENDOTA DR ASSESSMENT DISTRICT - 2023	M:\DESIGN\Projects\14082\CAD\sewers\14082SWR-GreenInf_V3.dwg	
14082	GI-4		

TOTAL AREA = 205 SF 5218 LAKE MENDOTA DR



DETAIL POINT ELEVATIONS/DESCRIPTIONS			
Point	Point Description	Distance from Existing FlowLine (ft)	Elevation
	Ex. EOG at CL of Flume	+0.125	857.20
A	Standard Gutter Flow Line at CL of Flume	0	857.08
B	Pro. Gutter Flow Line at CL of Flume Meeting Curb	-.17'(2")	856.91
C	Edge of Flume @ Gutter (Uphill)	varies	857.06
D	Edge of Flume @ Gutter (Downhill)	varies	857.04
E	Bottom of Flume at CL	-.33'(4")	856.74
F	Bottom of Stone/Pond	-.5'(6")	856.54
G	Edge of Flume @ Bottom of Basin (Uphill)	varies	856.89
H	Edge of Flume @ Bottom of Basin (Downhill)	varies	856.87



- NOTES:
1. ALL AREAS WITHIN GRADING LIMITS TO RECEIVE CLASS I, TYPE A - ORGANIC EROSION CONTROL MATTING IF COMPLETED OUTSIDE OF GROWING SEASONS, SEE SPECIAL PROVISIONS
 2. DO NOT SEED WITHIN SIDE SLOPES OR BOTTOM OF BASIN.
 3. SEE DETAIL D-1 AND D-2.

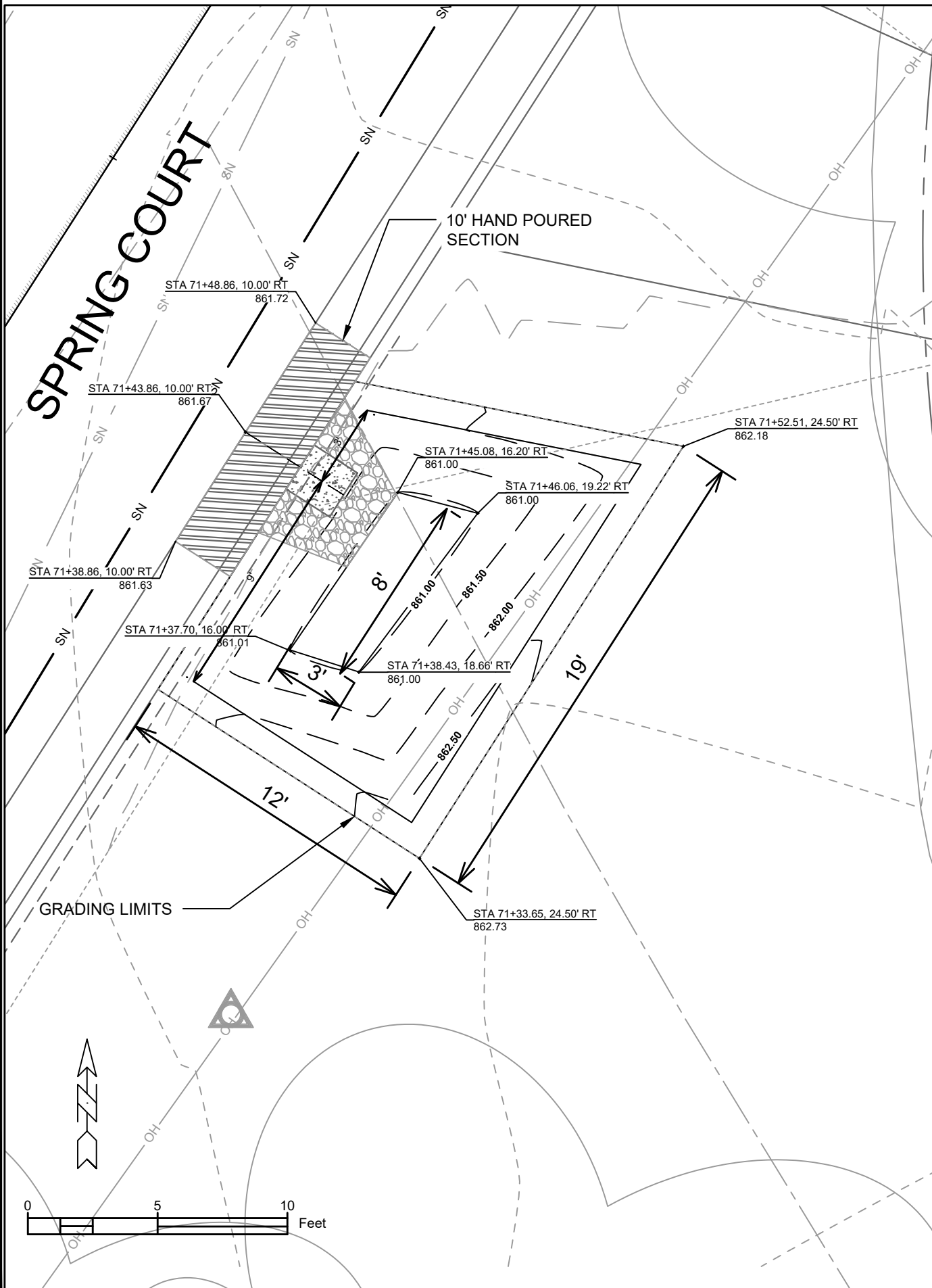
ADD.1	PLAN UPDATES	2/21/23	PDG	BY
MARK	REVISION	Date: 2/21/2023 12:38 PM	Scale:	
Designed By: PDG			14082	GI-5

14082
 MADISON, WI
 8622
 CONTRACT NO:
 GREENINF - SPRING HARBOR BOAT LAUNCH
 LAKE MENDOTA DR ASSESSMENT DISTRICT - 2023
 M:\DESIGN\Projects\14082\CAD\Severs\14082SWR-GreenInf_V3.dwg

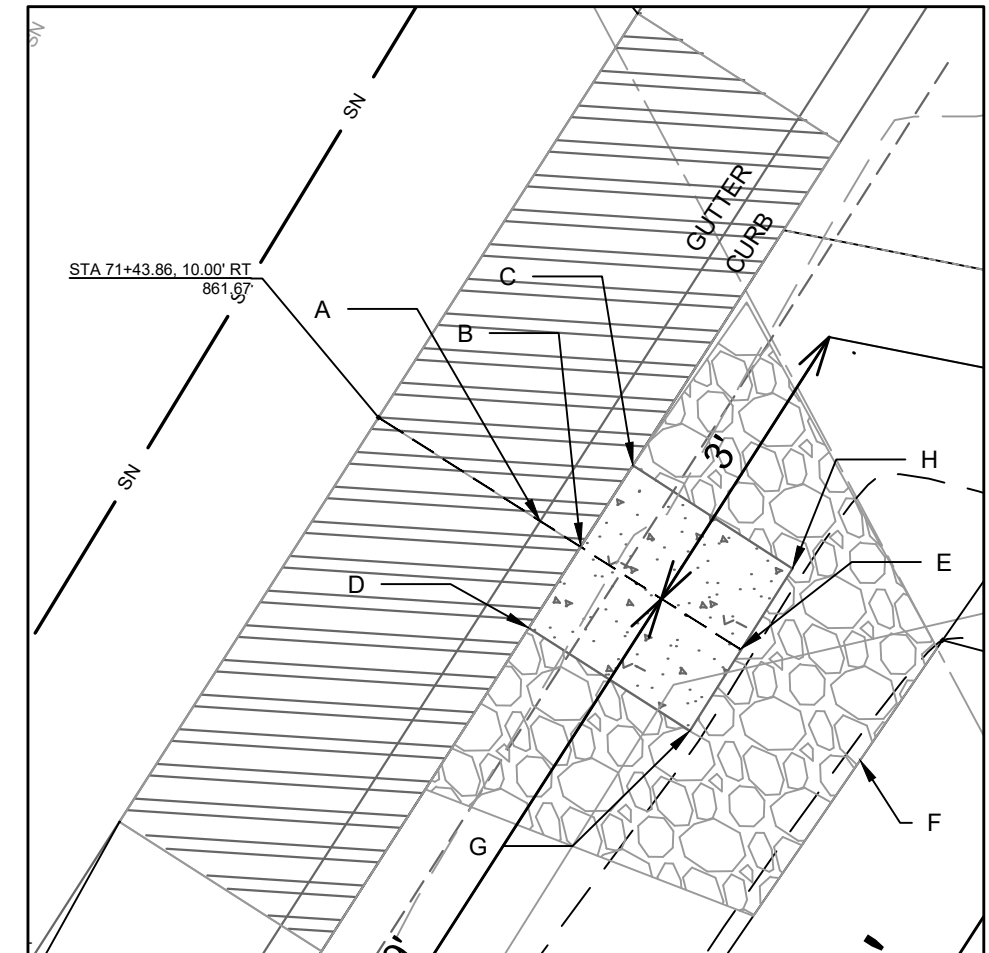


14082
 GI-5

TOTAL AREA = 200 SF 5141 SPRING CT



Point	Point Description	Distance from Existing FlowLine (ft)	Elevation
	Ex. EOG at CL of Flume	+0.125	861.67
A	Standard Gutter Flow Line at CL of Flume	0	861.55
B	Pro. Gutter Flow Line at CL of Flume Meeting Curb	-.17'(2")	861.38
C	Edge of Flume @ Gutter (Uphill)	varies	861.52
D	Edge of Flume @ Gutter (Downhill)	varies	861.50
E	Bottom of Flume at CL	-.33'(4")	861.21
F	Bottom of Stone/Pond	-.5'(6")	861.00
G	Edge of Flume @ Bottom of Basin (Uphill)	varies	861.44
H	Edge of Flume @ Bottom of Basin (Downhill)	varies	861.42

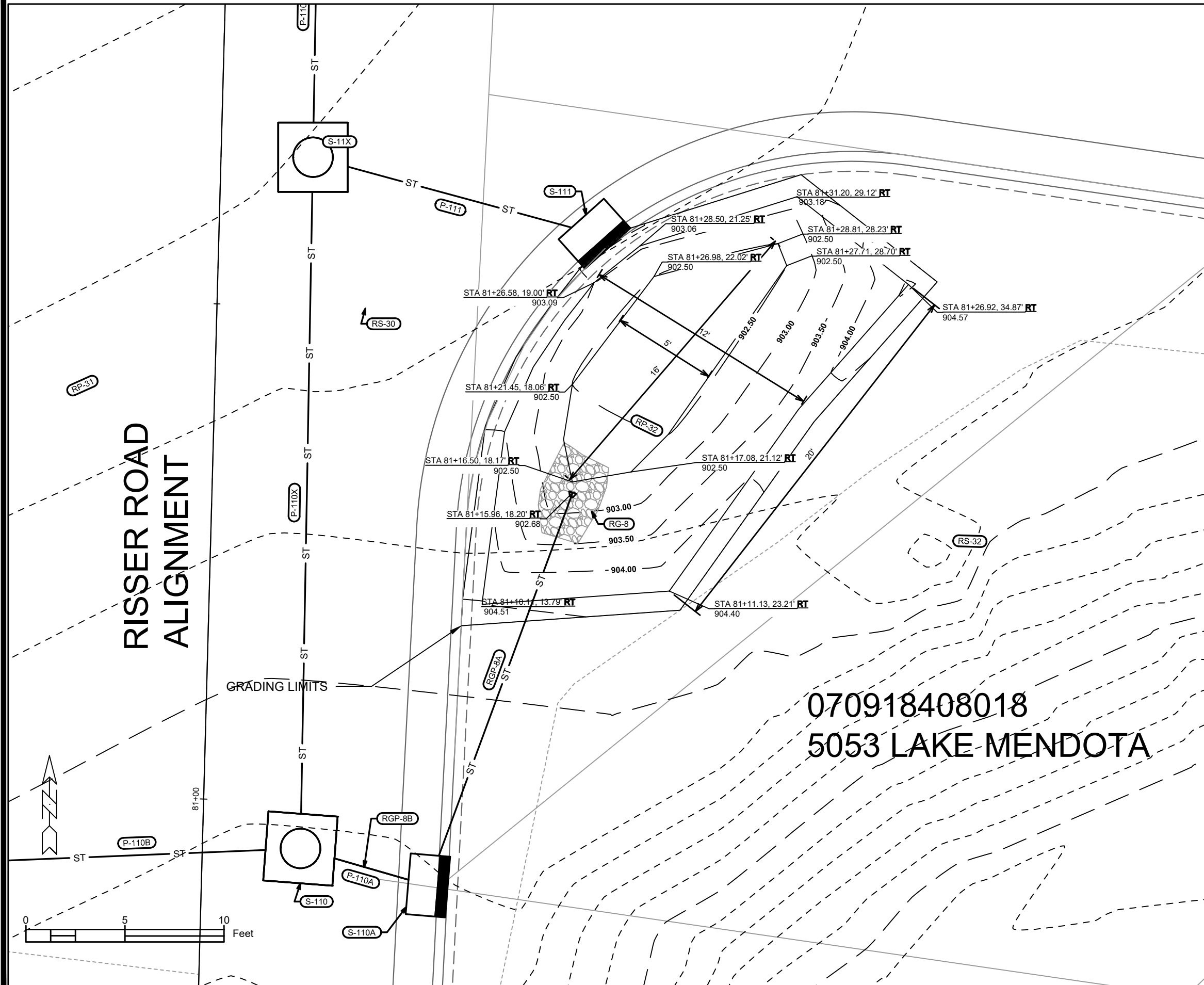


CURB CUT/FLUME TYP. DETAIL

NOTES:
 1. ALL AREAS WITHIN GRADING LIMITS TO RECEIVE CLASS I, TYPE A - ORGANIC EROSION CONTROL MATTING IF COMPLETED OUTSIDE OF GROWING SEASONS, SEE SPECIAL PROVISIONS
 2. DO NOT SEED WITHIN SIDE SLOPES OR BOTTOM OF BASIN.
 3. SEE DETAIL D-1 AND D-2.

14082	ADD.1	PLAN UPDATE	2/21/23	PDG	BY
	MARK	REVISION			
			Date: 2/21/2023 12:38 PM	Scale:	GI-6
14082	MADISON, WI		8622	CONTRACT NO.:	
GREENINF - TURTLE PARK NORTH					
LAKE MENDOTA DR ASSESSMENT DISTRICT - 2023					
M:\DESIGN\Projects\14082\CAD\sewers\14082SWR-GreenInf_V3.dwg					
14082					
GI-6					

TOTAL AREA = 330 SF 5053 LAKE MENDOTA DR



SEE SHEET U-17 (SCHEDULE) FOR PIPE & STRUCTURE INFORMATION

- NOTES:
1. ALL AREAS WITHIN GRADING LIMITS TO RECEIVE CLASS I, TYPE A - ORGANIC EROSION CONTROL MATTING IF COMPLETED OUTSIDE OF GROWING SEASONS, SEE SPECIAL PROVISIONS
 2. DO NOT SEED WITHIN SIDE SLOPES OR BOTTOM OF BASIN.
 3. SEE DETAIL D-1 AND D-2.

MARK	REVISION	DATE	BY
REV 1	ADD RAINGARDEN	5/9/23	PDG
DESIGNED BY	PDG	DATE	SCALE
14082	14082	5/9/2023 4:55 PM	G1-7

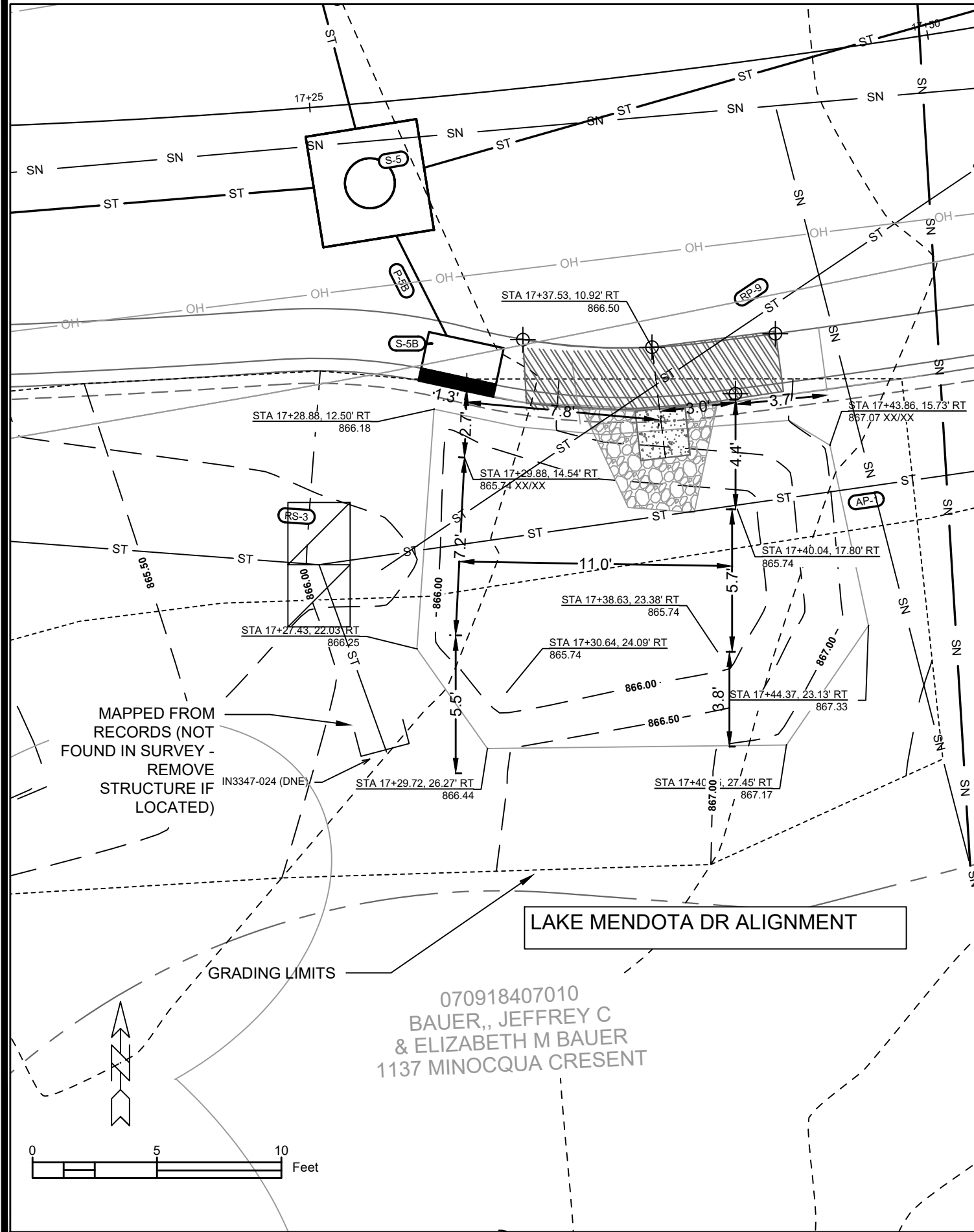
14082
 GREENINF - 5053 LAKE MENDOTA DR
 MADISON, WI
 LAKE MENDOTA DR ASSESSMENT DISTRICT - 2023
 CONTRACT NO: 8622
 M:\DESIGN\Projects\14082\CAD\sewers\14082SWR-GreenInf_V3.dwg



14082
 GI-7

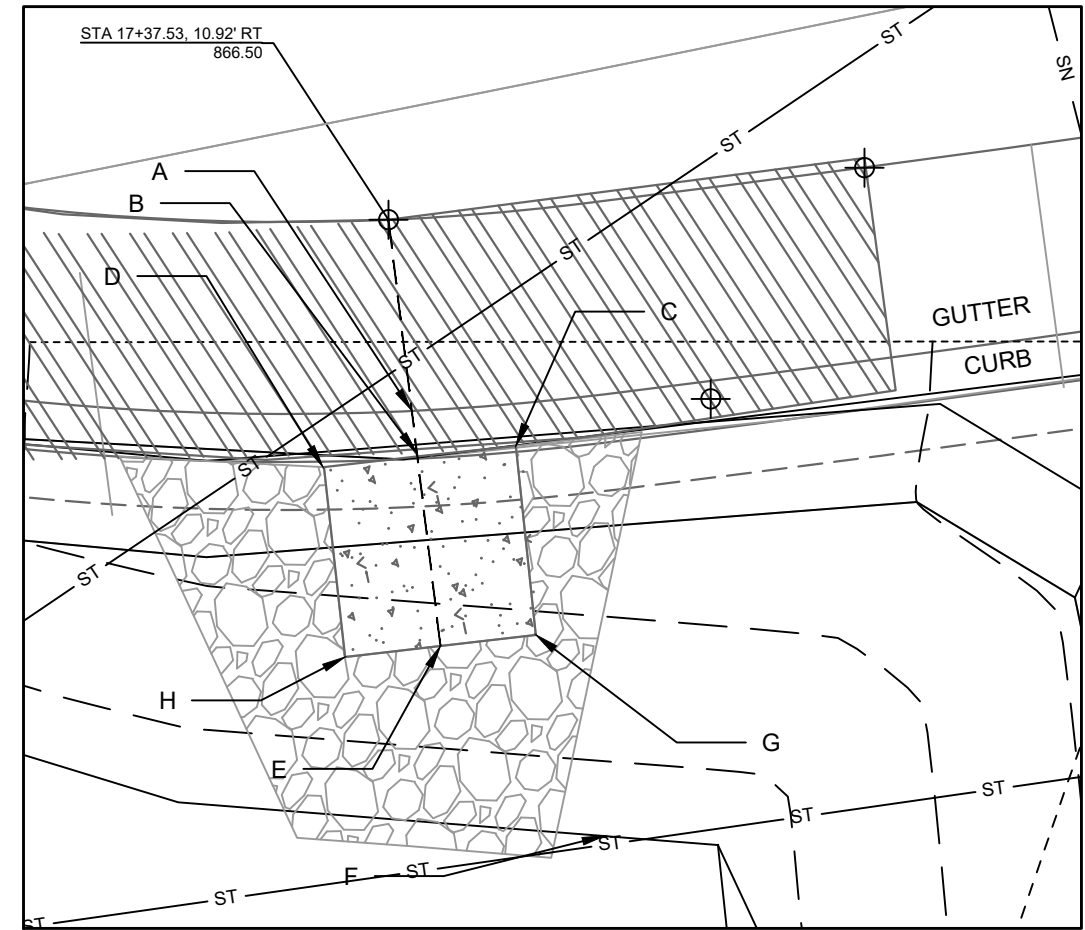
TOTAL AREA = 1025 SF 1137 MINOCQUA CRES

ADDED SHEET WITH REVISION 4

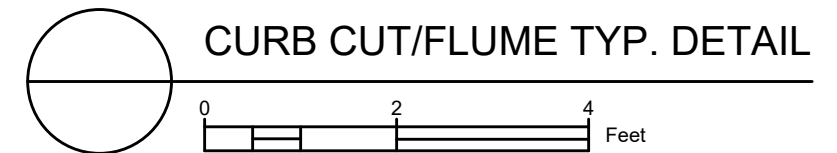


DETAIL POINT ELEVATIONS/DESCRIPTIONS

Point	Point Description	Distance from Existing	Elevation
	Ex. EOG at CL of Flume	+0.125	866.50
A	Standard Gutter Flow Line at CL of Flume	0	866.38
B	Pro. Gutter Flow Line at CL of Flume Meeting Curb	-.17'(2")	866.21
C	Edge of Flume @ Gutter (Uphill)	varies	866.29
D	Edge of Flume @ Gutter (Downhill)	varies	866.20
E	Bottom of Flume at CL	-.33'(4")	866.04
F	Bottom of Stone/Pond	-.5'(6")	865.74
G	Edge of Flume @ Bottom of Basin (Uphill)	varies	866.21
H	Edge of Flume @ Bottom of Basin (Downhill)	varies	866.12



- NOTES:
1. ALL AREAS WITHIN GRADING LIMITS TO RECEIVE CLASS I, TYPE A - ORGANIC EROSION CONTROL MATTING IF COMPLETED OUTSIDE OF GROWING SEASONS, SEE SPECIAL PROVISIONS
 2. ALL AREAS OUTSIDE OF TOP OF BASIN SHALL RECEIVE TERRACE SEED MIX, DO NOT SEED WITHIN SIDE SLOPES OR BOTTOM OF BASIN.
 3. SEE DETAIL D-1 AND D-2.



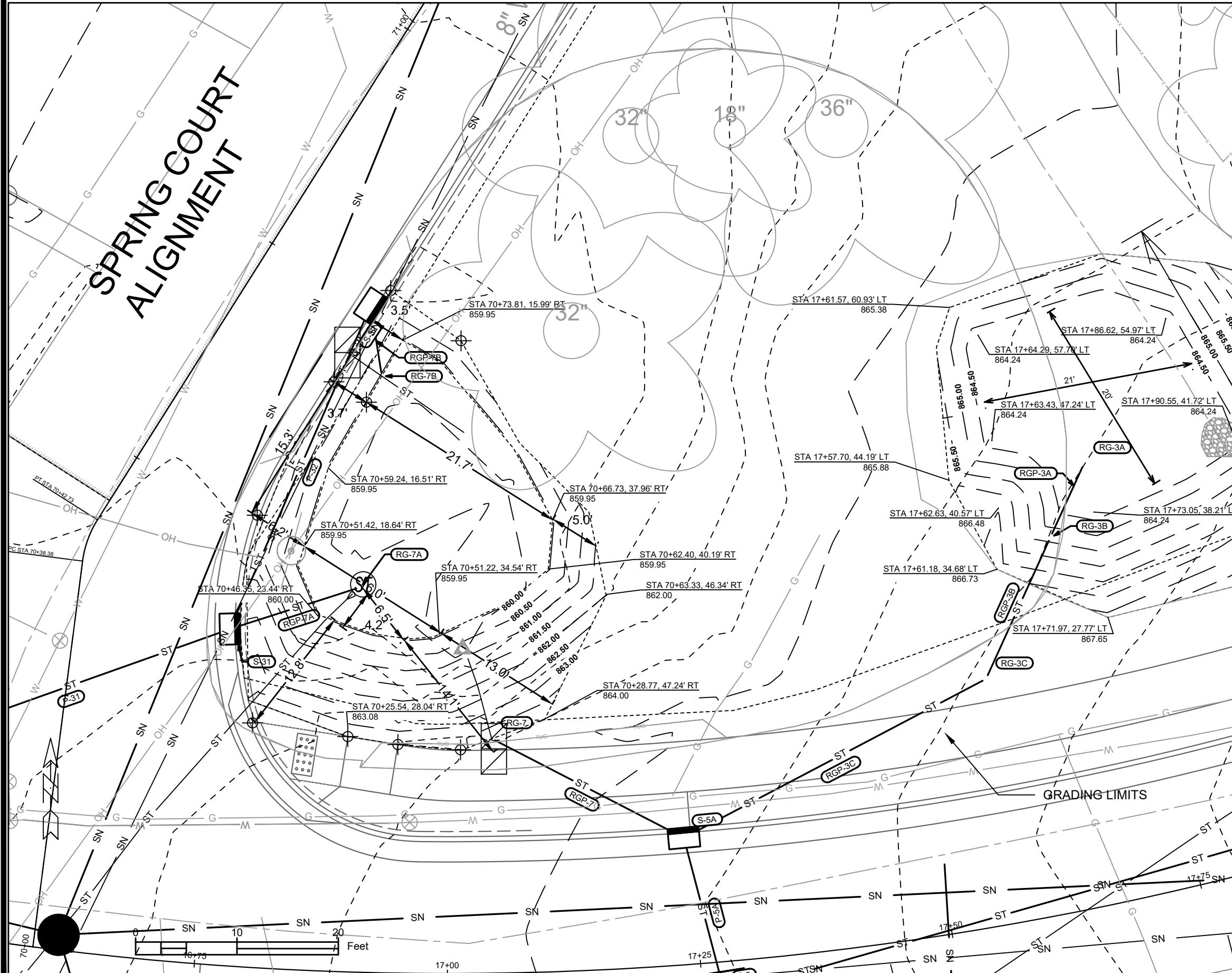
14082
MADISON, WI
MADISON, WI
CONTRACT NO.: 8622
14082
GI-8

GREENINF-1137 MINOQUA CRESSENT
LAKE MENDOTA DR ASSESSMENT DISTRICT - 2023
M:\DESIGN\Projects\14082\CAD\Severs\14082SWR-GreenInf_V3.dwg
Scale: 11:28 AM 7/13/2023
Designed By: SCL
REVISION
DATE
BY
PGD
GI-8

TOTAL AREA = 1090 SF

5140 LAKE MENDOTA DR

ADDED SHEET WITH REVISION 4



SEE SHEET U-17 (SCHEDULE) FOR PIPE & STRUCTURE INFORMATION

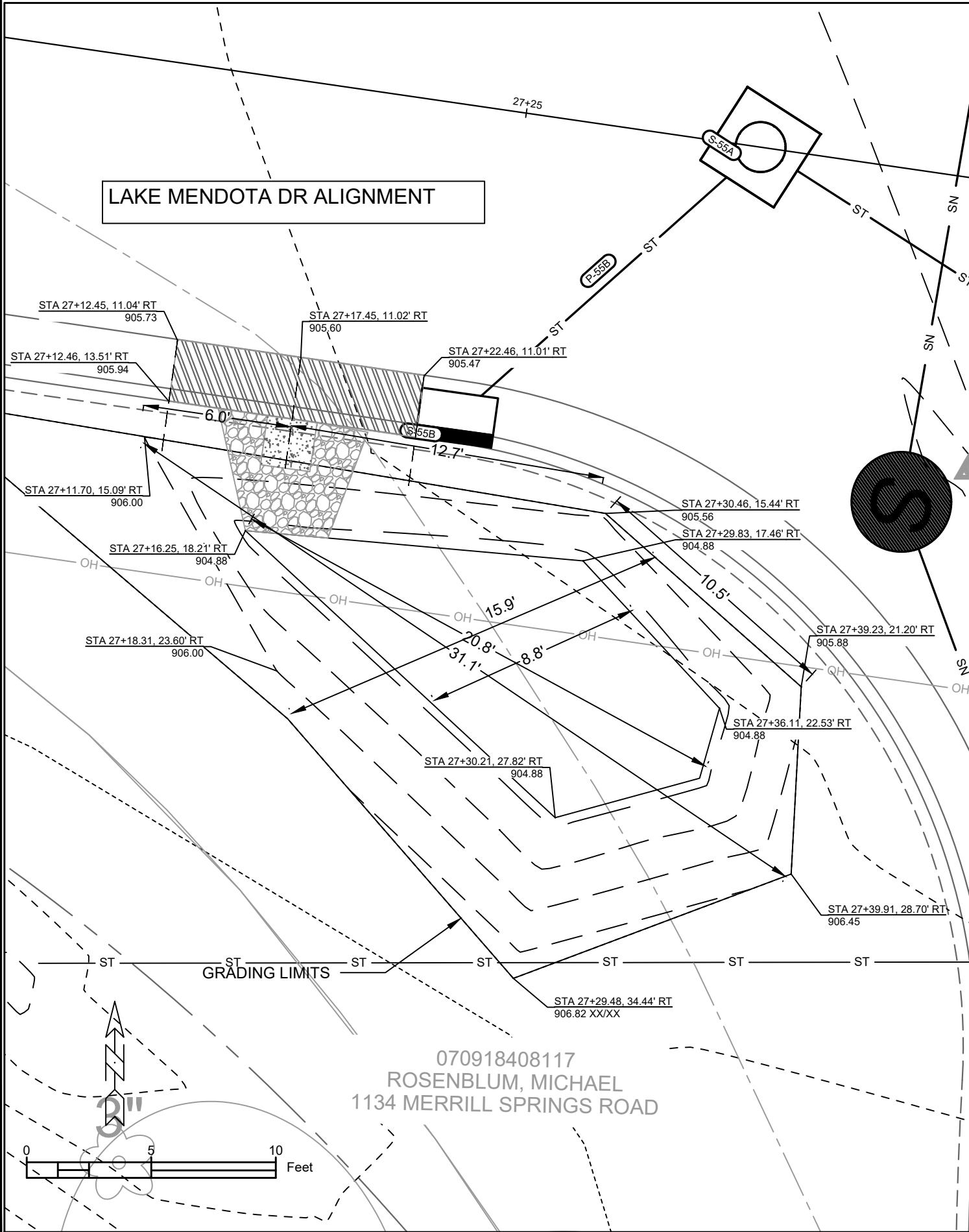
- NOTES:
1. ALL AREAS WITHIN GRADING LIMITS TO RECEIVE CLASS I, TYPE A - ORGANIC EROSION CONTROL MATTING IF COMPLETED OUTSIDE OF GROWING SEASONS, SEE SPECIAL PROVISIONS
 2. DO NOT SEED WITHIN SIDE SLOPES OR BOTTOM OF BASIN.
 3. SEE DETAIL D-1 AND D-2.

DATE	BY	PG
7/11/23		
REVISION		
ADD DESIGN TO PLAN SET		
MARK		
Designed By: PDG	Date: 7/13/2023 11:28 AM	Scale:
14082		
		GI-9

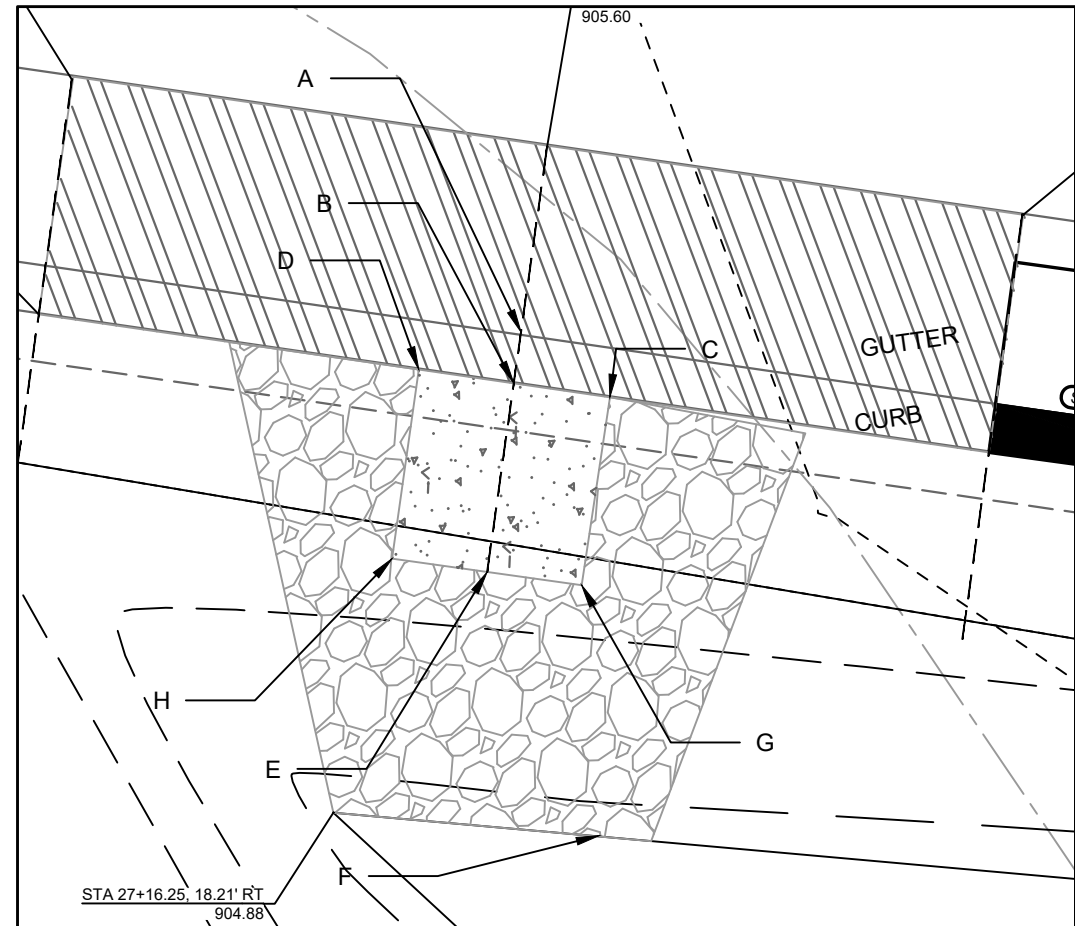
14082
 MADISON, WI
 CONTRACT NO: 8622
 GREENINF-TURTLE PARK REBUILD
 LAKE MENDOTA DR ASSESSMENT DISTRICT - 2023
 M:\DESIGN\Projects\14082\CAD\Severs\14082SWR-GreenInf_V3.dwg



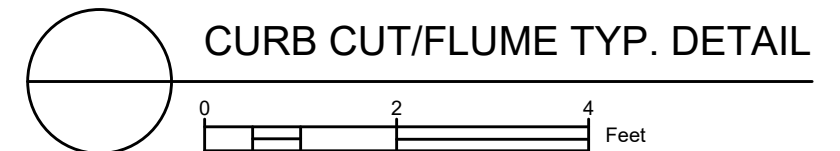
14082
 GI-9



Point	Point Description	Distance from Existing FlowLine (ft)	Elevation
	Ex. EOG at CL of Flume	+0.125	905.60
A	Standard Gutter Flow Line at CL of Flume	0	905.48
B	Pro. Gutter Flow Line at CL of Flume Meeting Curb	-.17'(2")	905.31
C	Edge of Flume @ Gutter (Uphill)	varies	905.41
D	Edge of Flume @ Gutter (Downhill)	varies	905.36
E	Bottom of Flume at CL	-.33'(4")	905.14
F	Bottom of Stone/Pond	-.5'(6")	904.88
G	Edge of Flume @ Bottom of Basin (Uphill)	varies	905.33
H	Edge of Flume @ Bottom of Basin (Downhill)	varies	905.27



- NOTES:
1. ALL AREAS WITHIN GRADING LIMITS TO RECEIVE CLASS I, TYPE A - ORGANIC EROSION CONTROL MATTING IF COMPLETED OUTSIDE OF GROWING SEASONS, SEE SPECIAL PROVISIONS
 2. ALL AREAS OUTSIDE OF TOP OF BASIN SHALL RECEIVE TERRACE SEED MIX, DO NOT SEED WITHIN SIDE SLOPES OR BOTTOM OF BASIN.
 3. SEE DETAIL D-1 AND D-2.



14082	MADISON, WI	8622	14082	G-10
GREENINF_-1134 MERRILL SPRINGS LAKE MENDOTA DR ASSESSMENT DISTRICT - 2023				
M:\DESIGN\Projects\14082\CAD\Servers\14082SWR-GreenInf_V3.dwg				
14082				
G-10				