



City of Madison Engineering Division

Mineral Point Road Reconstruction

Business Involvement Meeting #1

November 6th, 2024

Project ID 5992-07-23 & 5992-10-20

City of Madison, Mineral Point Road

(USH 12 to High Point Road)

Presentation will begin at 10:30

Thank you for attending. We will begin shortly...



Presentation Overview



Welcome



Introduction



Presentation



Question & Answer



Mead&Hunt

Rules and Housekeeping

- This meeting will be **recorded** and posted to the City's project page.
- All attendees will be **muted** during the presentation.
- Use **“chat”** option if you are having technical issues and a staff person can try to assist.
 - Chat will be disabled once presentation starts.
- After the presentation, participants may ask questions via the “Q&A” option, verbally, or by email.
 - Please use the **“Q&A”** option at the bottom of the screen to type a question.
 - To ask a question verbally, click the **“raise hand”** option at the bottom of your screen and the host will unmute you.
 - Email a question to azwieg@cityofmadison.com



This meeting is being recorded.

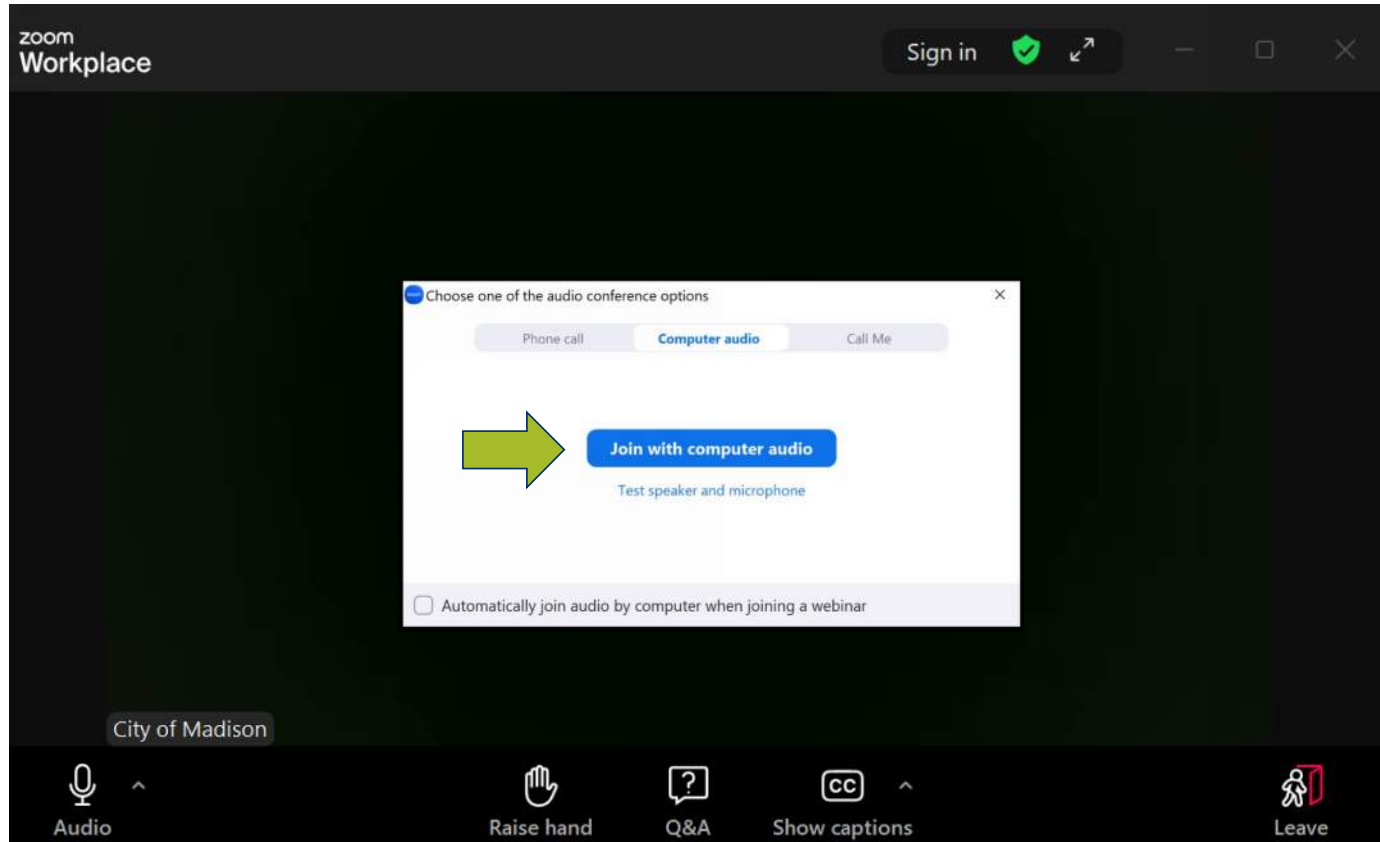
It is a public record subject to disclosure.

By continuing to be in the meeting, you are consenting to being recorded and consenting to this record being released to public record requestors.



**Mead
& Hunt**

How to Participate

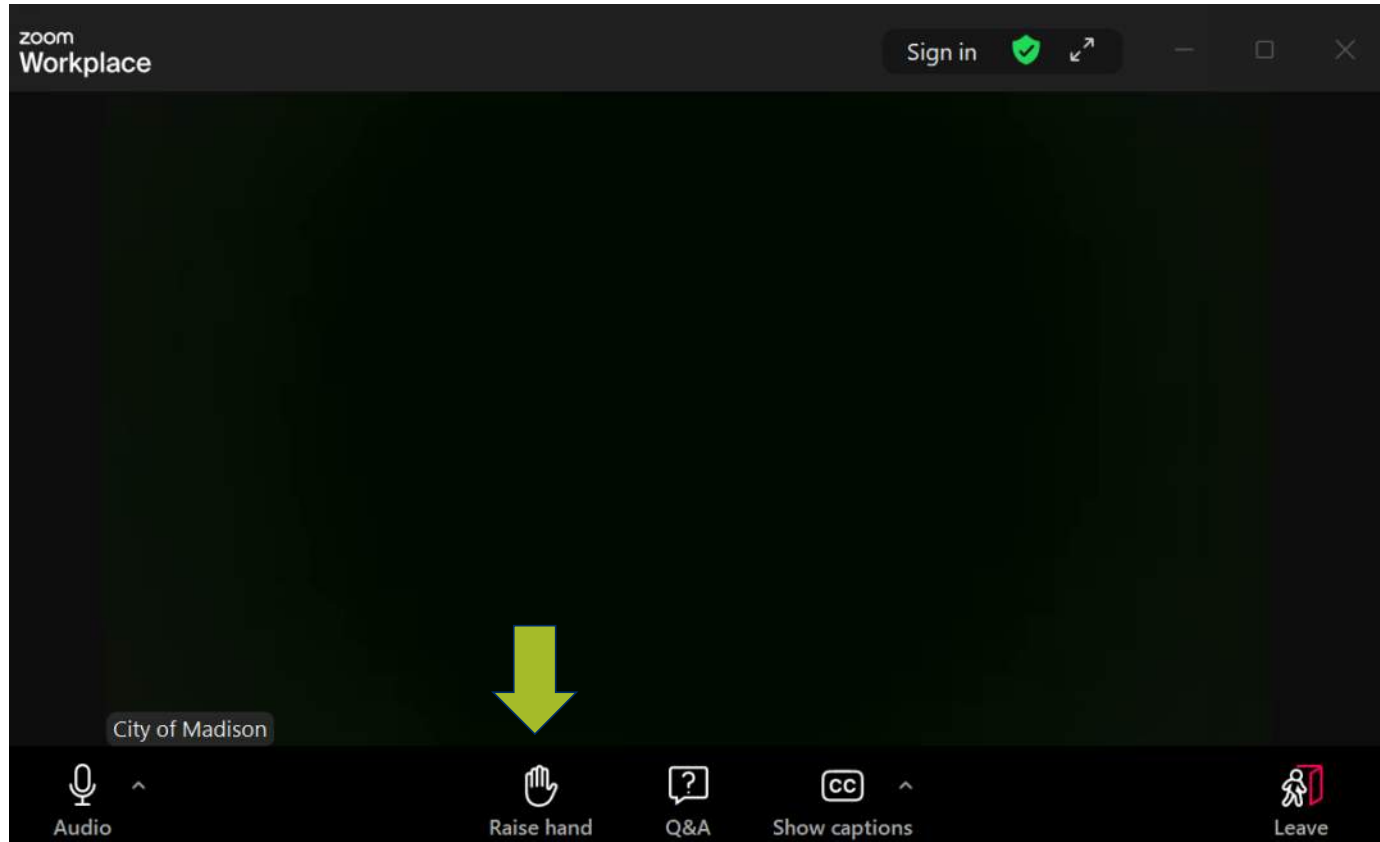


Join audio to ensure you will be able to hear the speaker



Mead
& Hunt

How to Participate

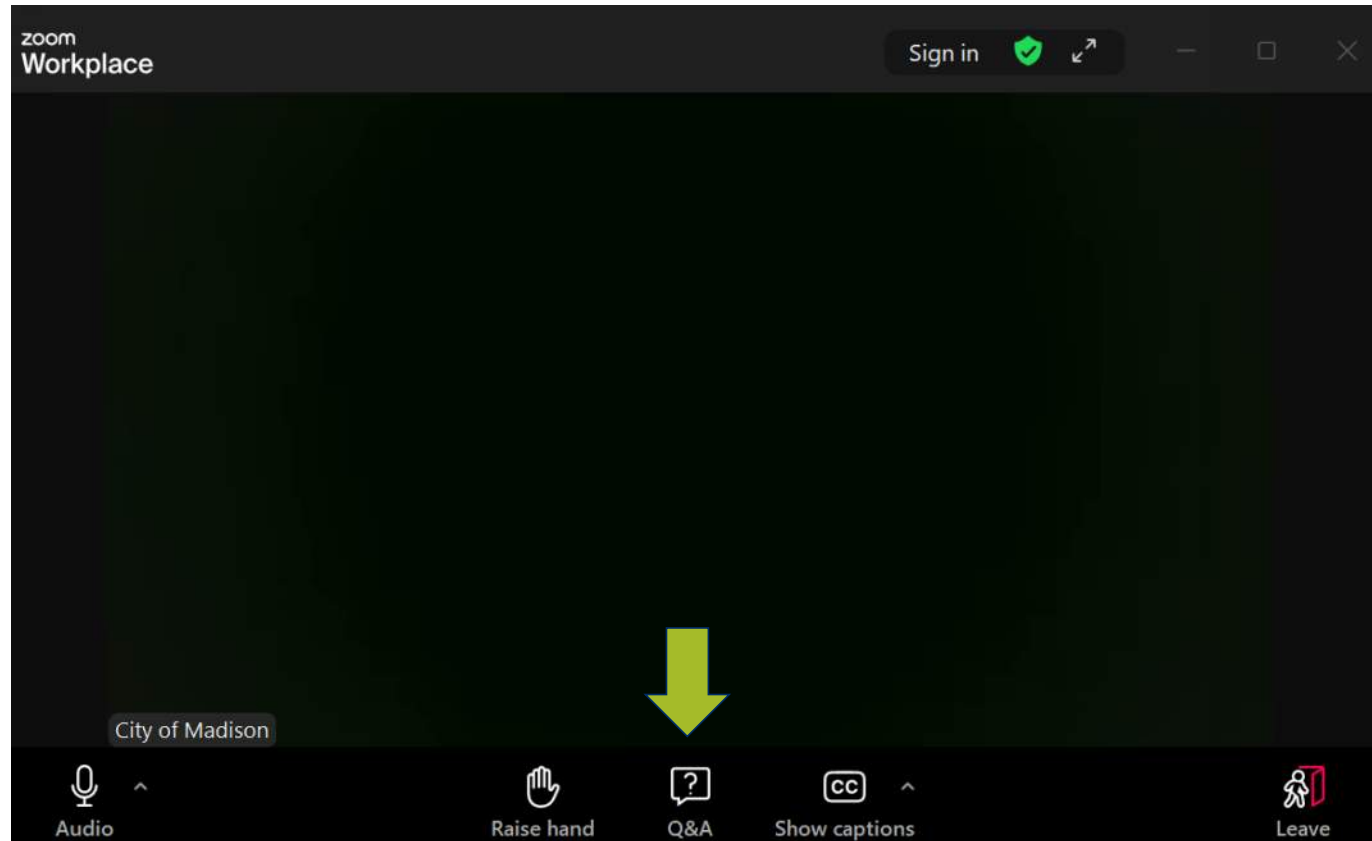


Raise hand to be unmuted and ask questions after the meeting



**Mead
& Hunt**

How to Participate

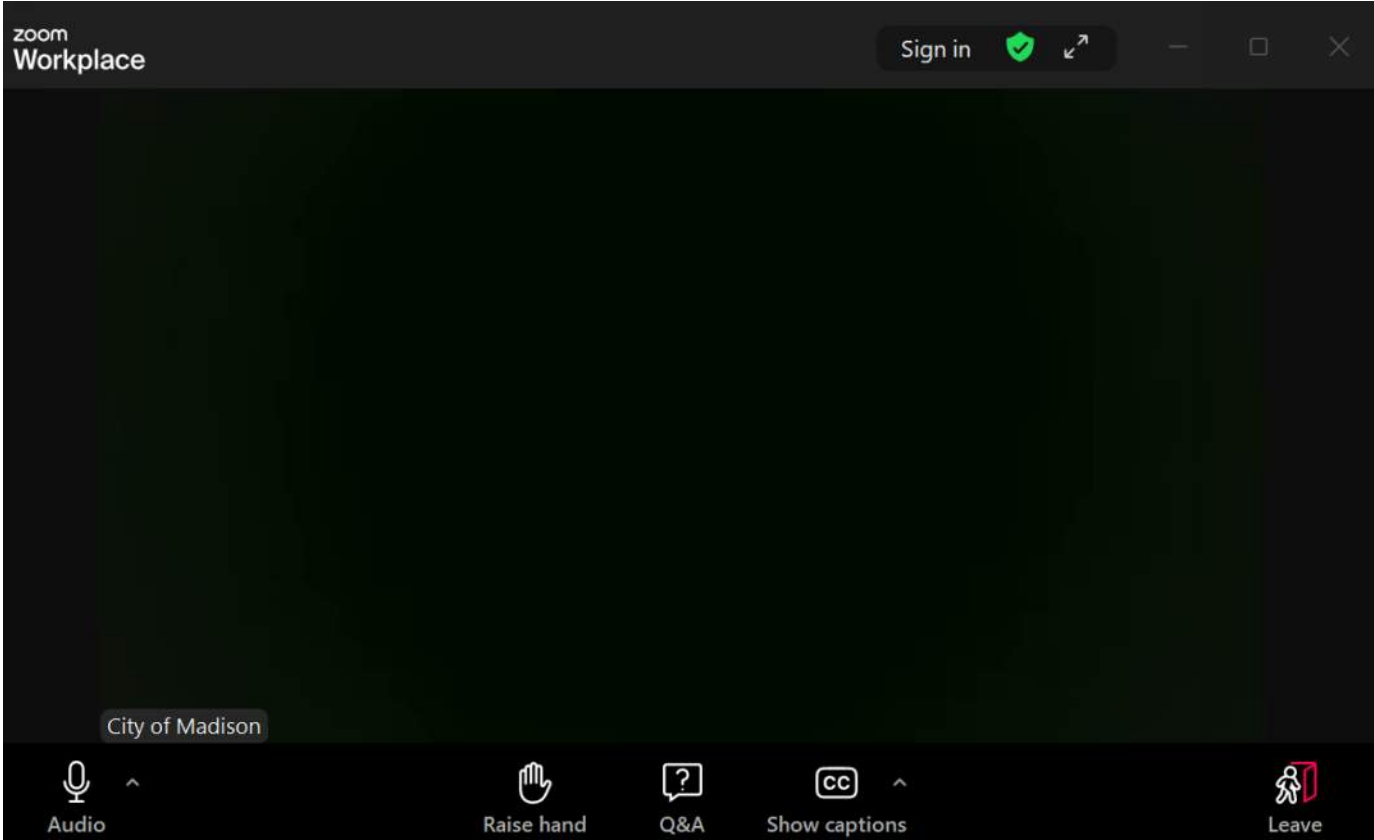


Use **Q/A** button for technical issues or questions. We will answer after the presentation



Mead
& Hunt

How to Participate

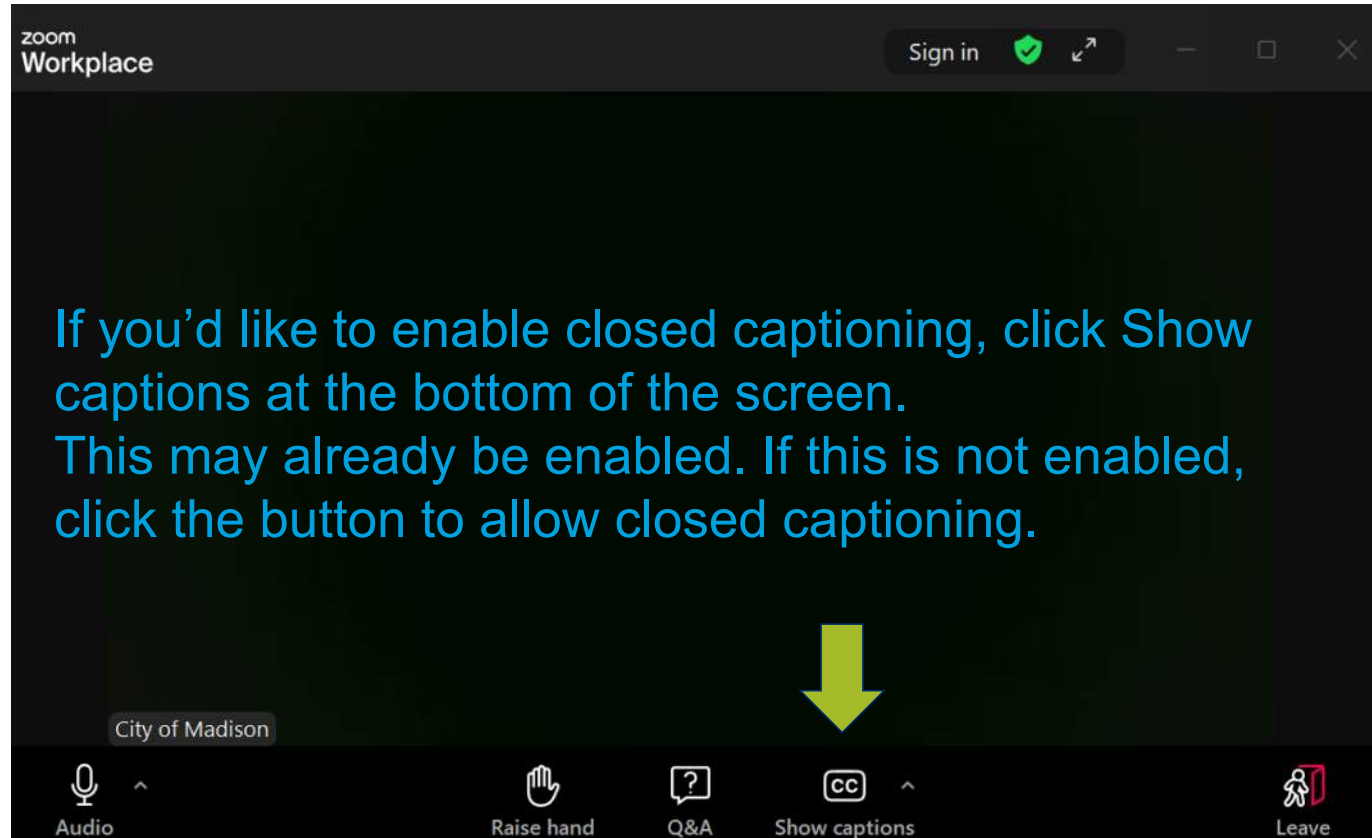


To leave the meeting click here.



Mead & Hunt

How to Participate



Mead
& Hunt

Presentation Overview

- Project Location
- Existing Conditions
- Project Improvements
 - Street
 - Drainage
 - Intersection
- Forestry Information
- Assessments Policy & Costs
- Construction Staging and Schedule
- Contact Information & Resources
- Question & Answers



Mead
& Hunt

Project Location



Mead & Hunt

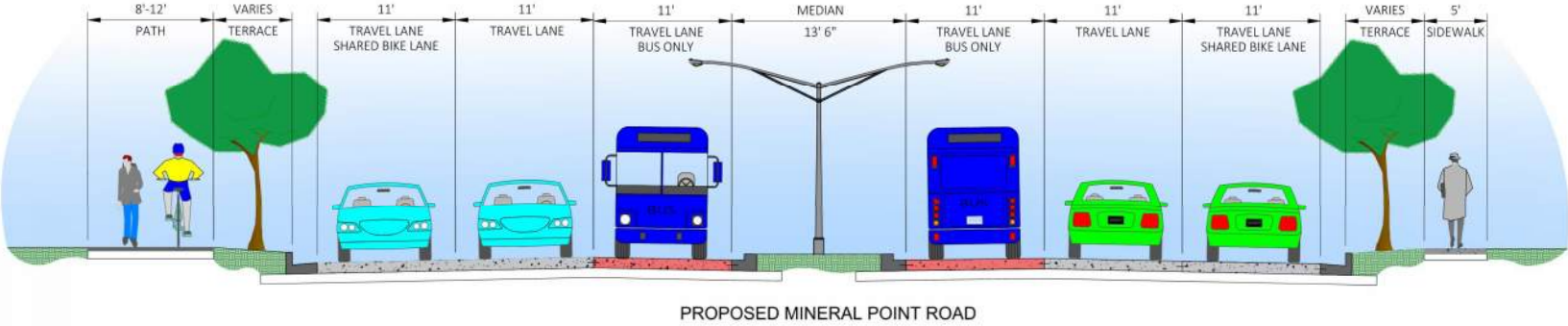
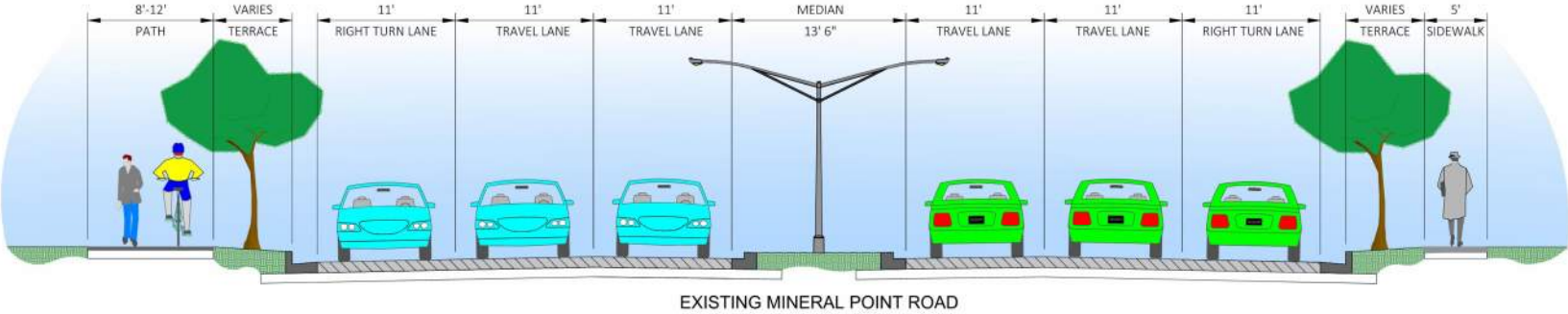
Existing Conditions

| Item | Mineral Point Road Existing Condition |
|--------------------------------------|--|
| Last Constructed | 1987, 2008, 2014 |
| Pavement Surface Evaluation & Rating | 3/10 – Structural Improvement Required, Over 75% of Pavement is Cracked & Deteriorated |
| Curb Rating | 4/10 |
| Width | 2 - 11' Vehicle lanes + 1 – 11' Bus Lane |
| Surface | Concrete |
| Walking Facilities | Mult-use Path (North) + Sidewalk (South) |
| Storm | Median Replacements |
| Crashes | 91 (33% Rear End & 24% Angle Crashes) |



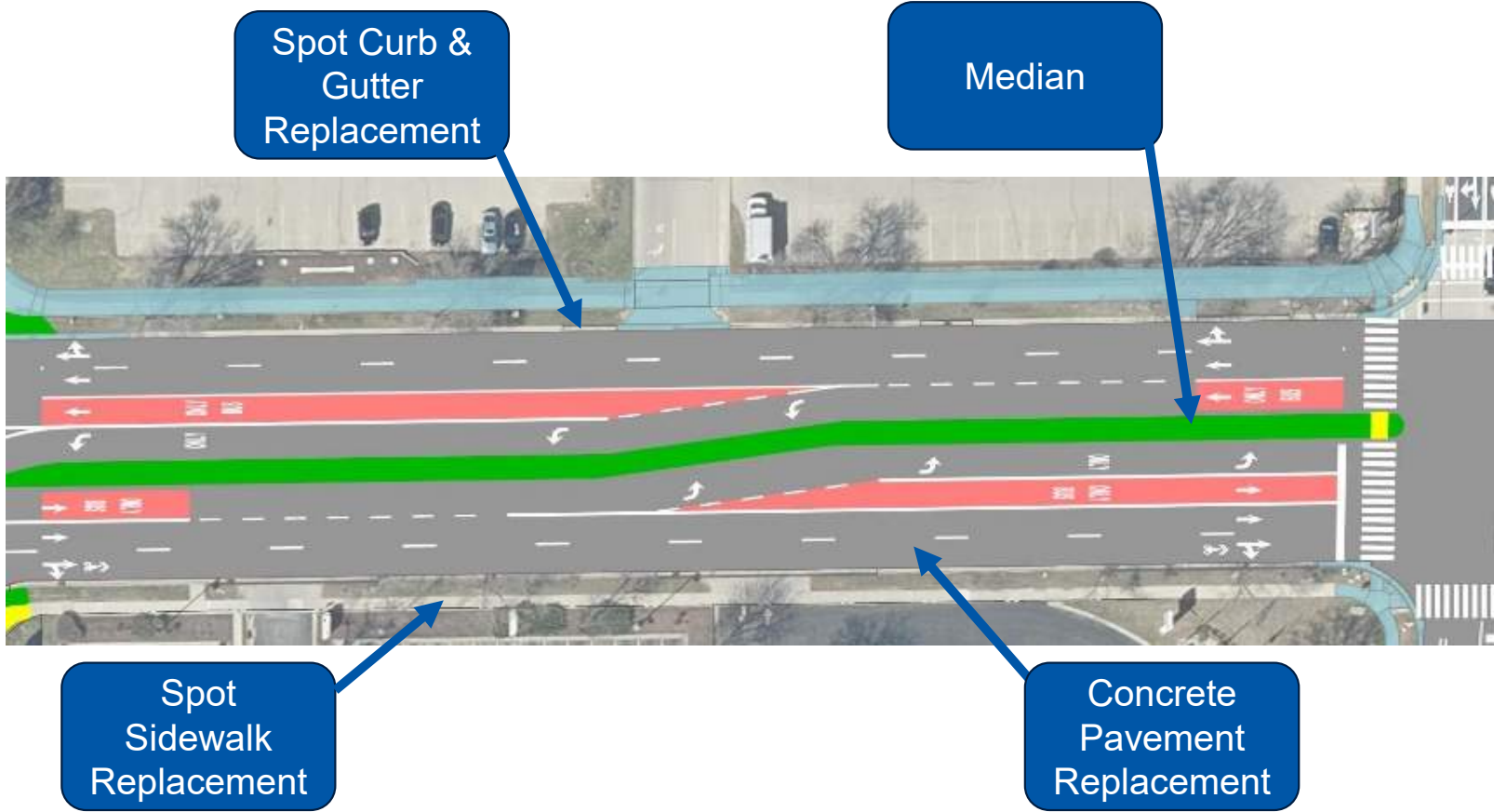
Mead
& Hunt

Proposed Improvements – Street



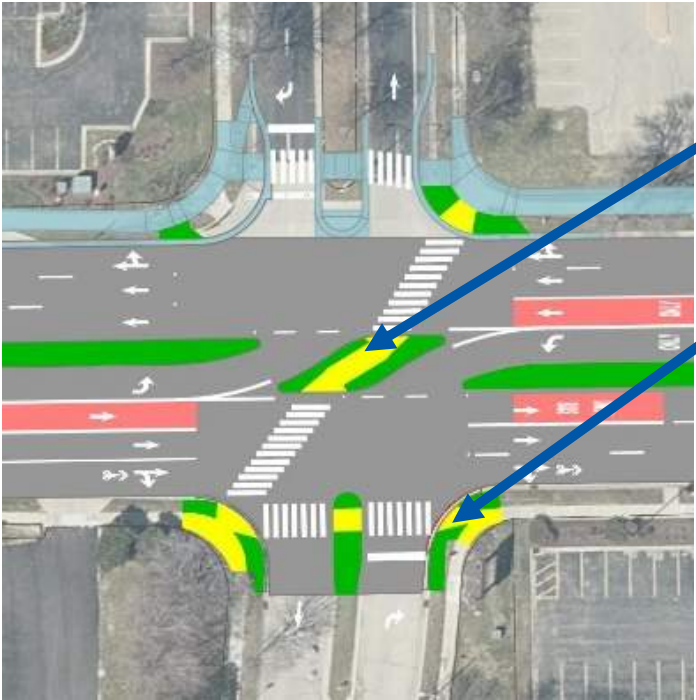
Mead & Hunt

Proposed Improvements - Street



Mead & Hunt

Proposed Improvements - Intersection



Tree Lane/Big Sky Drive

- Multi-Modal Crossing
- ADA Curb Ramps
- Traffic Signal
- Do Not Block for Driveway



S. High Point Road



Mead & Hunt

Forestry Information

- City Engineering has reviewed with City Forestry
- Forestry to collaborate during construction
- Trees to be pruned prior to construction
- No planned tree removals at this time
- Reasons for potential removal include:
 - Poor condition
 - Root damage
 - Unavoidable storm sewer conflict
- Tree Equity Score(treeequityscore.org)
 - 94 north of Mineral Point Road (34% canopy cover, maintain trees and low planting need)
 - 73 south of Mineral Point Road (8% canopy cover, priority to plan new trees)



Mead
& Hunt

Assessment Policy & Costs

- Special charge that has a direct benefit to the property
- Preliminary assessment will be mailed during design phase
 - Based on estimated quantities
 - Unit prices for driveways, pavement reconstruction, and terrace walks based on 2025 street improvement rates
 - Rates are an average of last 3 years of construction costs
 - Unit prices for private storm sewer connections and lighting based on estimated prices
- Assessments can be paid in lump sum or typically over 8 years with 5% interest
- Final assessment billed after project completion
 - Based on measured quantities
 - Unit prices for driveways, pavement reconstruction, and terrace walks will not change from preliminary
 - Unit prices for private storm sewer connections and lighting based on bid prices



Mead
& Hunt

Assessment Policy & Costs

| Item | Property Owner Share | City Share | Federal Share |
|------------------------------------|----------------------|------------|---------------|
| 10" Concrete Pavement Replacement | 40% | 0% | 60% |
| Driveway Apron | 20% | 20% | 60% |
| Sidewalk Replacement | 0% | 40% | 60% |
| Storm Sewer Main | 0% | 40% | 60% |
| Private Storm Connections (if any) | 40% | 0% | 60% |
| Street Lighting | 40% | 0% | 60% |

Note: Assessed per Linear Foot of Frontage and with direct accesses off Mineral Point Road

- Driveway apron replacement approx. \$1,000 each
- Street lighting replacement approximately \$2,500 per light



Mead
& Hunt

Real Estate

- Avoid and Minimize
- Types
 - Temporary Limited Easement (TLE)
 - Permanent Limited Easement (PLE)
- Potential Locations
 - Curb Ramps (TLE)
 - Drainage Corridor (PLE)



Mead
& Hunt

Construction

- Advertisement for Bids in November 2025
- Construction anticipated to begin in early spring 2026
- Project completion anticipated to be in 2027
- Anticipated \$10.9 million construction cost
- 3 Construction Operations
 - 12'x6' Box Culvert installation
 - 110" Micro-Tunnel installation
 - Roadway Construction (Pavement, Curb & Gutter, Sidewalk, Lighting, etc.)
- Each construction operations will include multiple stages
- Construction could include multiple operations concurrently
- Business access for customers and deliveries to be altered but maintained
- Business signs to remain in place
- Temporary wayfinding signs to be determined
- Businesses to be notified of changes to access through coordination with contractor and construction inspection team



Mead
& Hunt

Construction Staging

Mineral Point Road

- One lane of travel in each direction for an extended period of time
- Turn Lane restrictions during construction (i.e. No left turn or right turn)

S. High Point Road

- Two lanes of travel south of Mineral Point Road
- One lane of travel southbound north of Mineral Point Road during Micro-tunneling operations
- Full Closure for a limited time to install 12'x6' Box Culvert

Tree Lane/Big Sky Drive

- Full Closure for a limited time to install 12'x6' Box Culvert
- Full Access (left turns) to be limited during construction



Mead
& Hunt

Construction Staging

Beltline Eastbound On-Ramp and Westbound Off-Ramp

- Full or lane closure for a limited time
- Install Box Culvert and restore pavement
- Alternative Routes to be posted

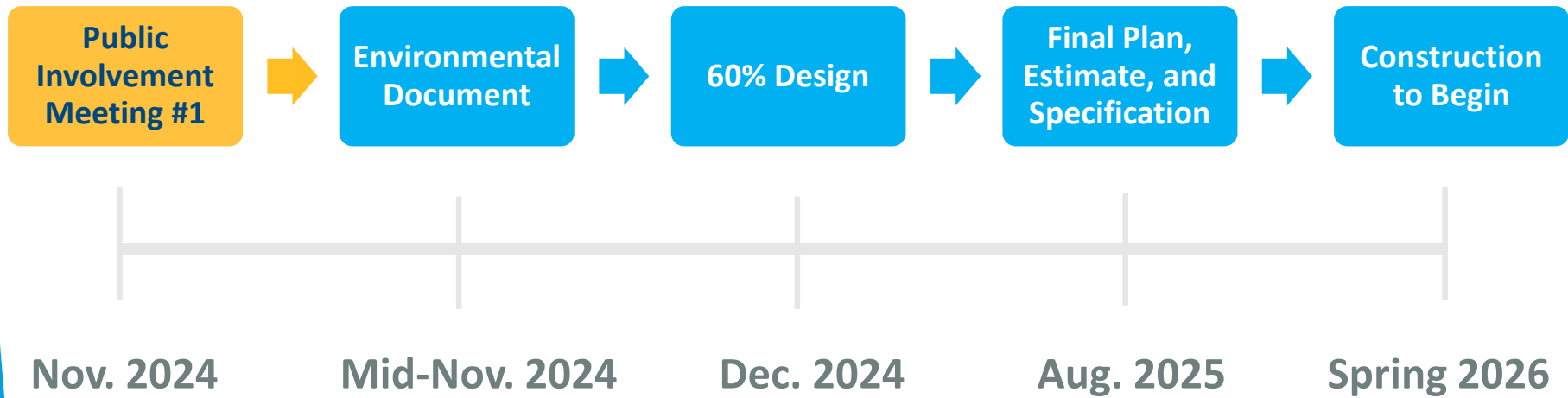
- No planned disruptions to sanitary sewer, water service, or Communication line
 - Emergency water service shut-offs possible, notify affected properties ASAP
- After construction, disturbed areas will be covered with topsoil, seed or sod, & erosion mat
 - Contractor is responsible for watering during construction
 - Property owner responsible after construction
- Public Meeting to occur prior to construction with additional details
 - Construction Timing & Duration
 - Traffic Control and Staging



Mead
& Hunt

Next Steps

WE ARE HERE



Mead & Hunt

Contact Information & Resources

- Engineering
 - Project Manager, Andrew Zwieg, 266-9219, azwieg@cityofmadison.com
 - Public Information Officer, Hannah Mohelnitzky, 669-3560, hmohelnitzky@cityofmadison.com
- Project Website: <https://www.cityofmadison.com/engineering/projects/mineral-point-road>
 - Sign-up for project email updates on the website
 - A PDF of the presentation, design information, & construction progress will be posted to the project website
- Facebook – City of Madison Engineering
- Twitter – @MadisonEngr
- Everyday Engineering Podcast – search “Everyday Engineering” on Apple iTunes or GooglePlay



Mead
& Hunt



Thank you for Attending!

Questions

Please use the ["Q&A"](#) option at the bottom of the screen to type a question.
To ask a question verbally, click the ["raise hand"](#) option at the bottom of your screen and the host will unmute you.

Engineering

Project Manager, Andrew Zwieg, 266-9219, azwieg@cityofmadison.com
Public Information Officer, Hannah Mohelnitzky, 669-3560,
hmohelnitzky@cityofmadison.com

Comment Form

Link: [Comments](#)

Scan QR code

