

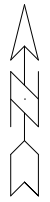
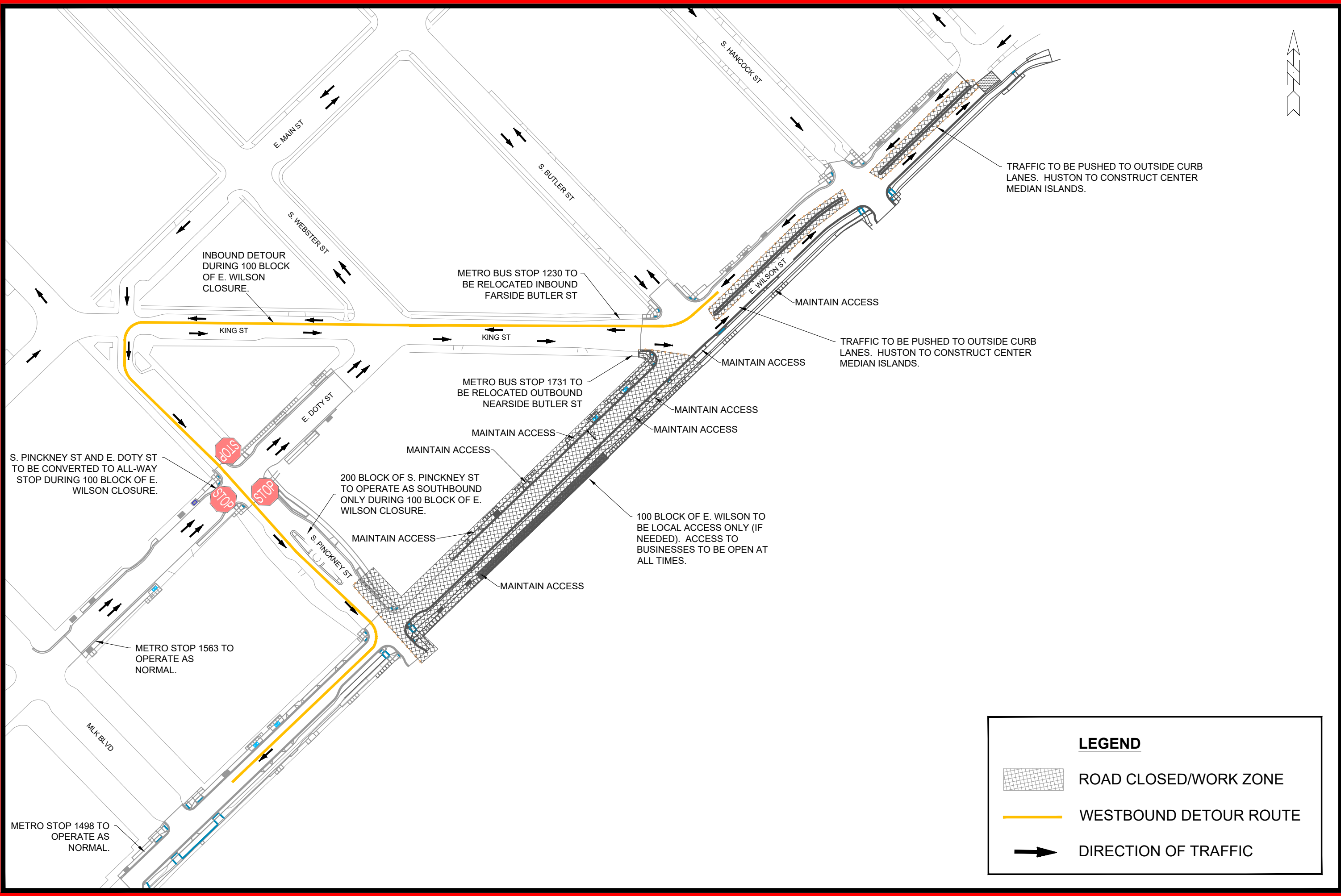
MARK	REVISION	DATE	BY
Designed By: LMC	Date:	11/15/20	TE
11543			

11543
 MADISON, WI
 CONTRACT NO:
 E. WILSON & DOTY ST - RECONSTRUCTION
 M:\DESIGN\Projects\11543\CAD\Traffic\11543 - 2025 Construction TC Coordination Phase 1.dwg

TRAFFIC CONTROL - PHASE 1



11543
 TE



TRAFFIC TO BE PUSHED TO OUTSIDE CURB LANES. HUSTON TO CONSTRUCT CENTER MEDIAN ISLANDS.

TRAFFIC TO BE PUSHED TO OUTSIDE CURB LANES. HUSTON TO CONSTRUCT CENTER MEDIAN ISLANDS.

100 BLOCK OF E. WILSON TO BE LOCAL ACCESS ONLY (IF NEEDED). ACCESS TO BUSINESSES TO BE OPEN AT ALL TIMES.

INBOUND DETOUR DURING 100 BLOCK OF E. WILSON CLOSURE.

METRO BUS STOP 1230 TO BE RELOCATED INBOUND FARSIDE BUTLER ST

METRO BUS STOP 1731 TO BE RELOCATED OUTBOUND NEARSIDE BUTLER ST

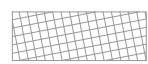


S. PINCKNEY ST AND E. DOTY ST TO BE CONVERTED TO ALL-WAY STOP DURING 100 BLOCK OF E. WILSON CLOSURE.

200 BLOCK OF S. PINCKNEY ST TO OPERATE AS SOUTHBOUND ONLY DURING 100 BLOCK OF E. WILSON CLOSURE.

METRO STOP 1563 TO OPERATE AS NORMAL.

METRO STOP 1498 TO OPERATE AS NORMAL.

LEGEND

-  ROAD CLOSED/WORK ZONE
-  WESTBOUND DETOUR ROUTE
-  DIRECTION OF TRAFFIC

MARK	REVISION	DATE	BY
Designed By: LMC	Date:	Scale: 1" = 20'	TE
11543			TE

11543
 MADISON, WI
 CONTRACT NO:
 E. WILSON & DOTY ST - RECONSTRUCTION
 M:\DESIGN\Projects\11543\CAD\Traffic\11543 - 2025 Construction TC Coordination Phase 2.dwg



11543
 TE