



STARKWEATHER CREEK PATH

RE-GRADING ALONG CREEK BANK TO WIDEN CHANNEL UNDER BRIDGE TO MAINTAIN CAPACITY

BCYCLE STATION

THICKENED EDGE + RAILING

RE-GRADE ASPHALT PATH

TREE AND BRUSH REMOVALS

AREA STORM INLET ADDED

CONCRETE RAMP-UP

RETAINING WALL + RAILING

GALLAGHER AVE

HERMINA ST

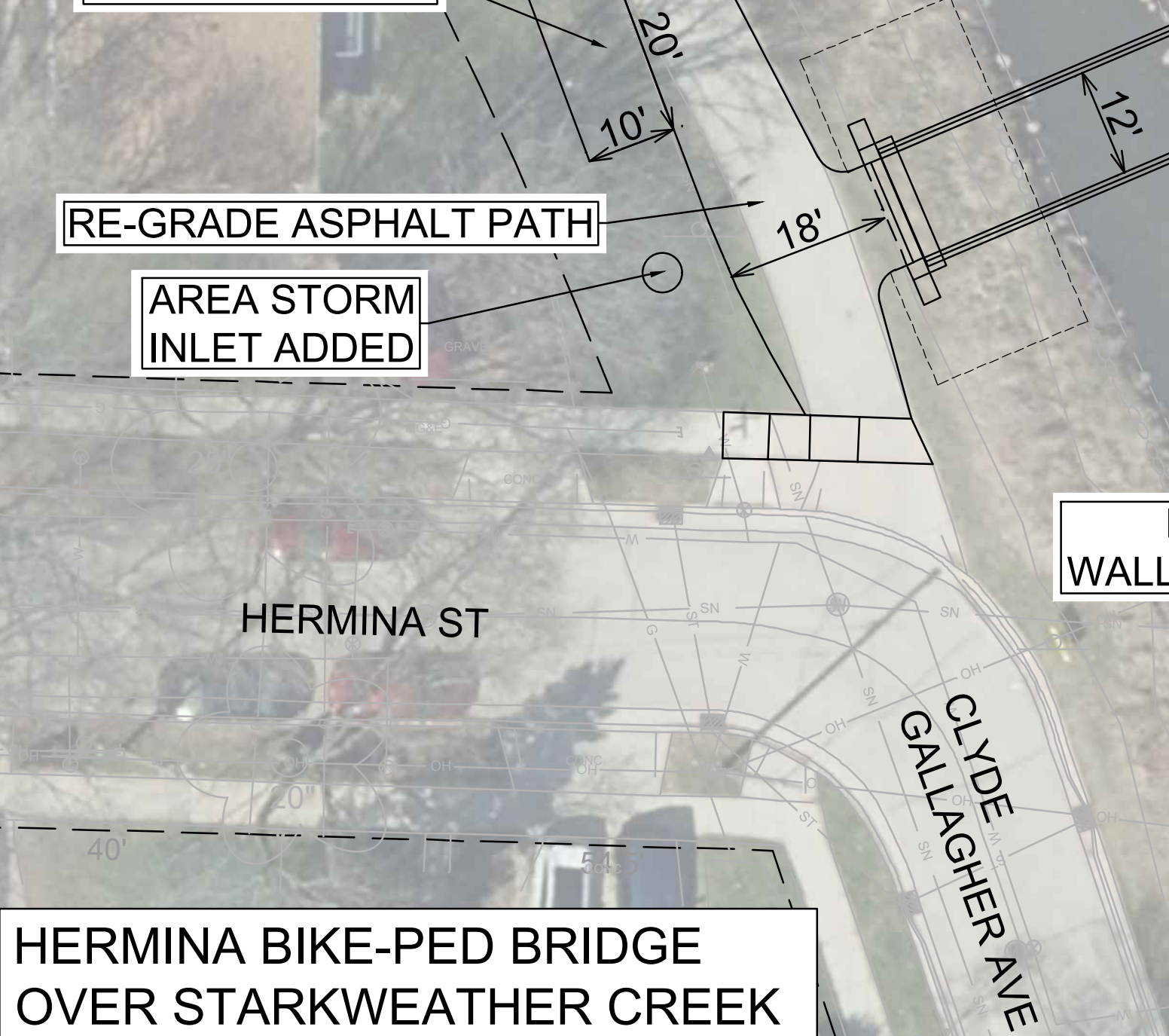
HERMINA ST

GALLAGHER AVE

STARKWEATHER CREEK

HERMINA BIKE-PED BRIDGE OVER STARKWEATHER CREEK

SANITARY LIFT STATION (TO REMAIN)



MARK	REVISION	DATE	BY
###	###	###	###
###	###	###	###
###	###	###	###
###	###	###	###

#####

CONTRACT NO: #####

#####



###