



Olin-Turville Court and E. Lakeside Street Assessment District - 2024 (Street Resurfacing)

Public Information Meeting
City of Madison Engineering Division
June 3, 2024

Thank you for attending. We will begin shortly...



Meeting Technical Housekeeping

- This meeting will be **recorded** and posted to the project page.
- All attendees should be **muted** to keep background noise to a minimum.
- Use the **“Q and A”** button for technical issues with meeting to troubleshoot with staff to assist.
- Use the **“Q and A”** button to type questions about presentation. Questions will be answered live after the presentation.
- Inappropriate questions may be dismissed.
- Use the **“raise your hand”** button to verbally ask your question. You will be prompted to unmute when it is your turn.

This meeting is being recorded.

It is a public record subject to disclosure.

By continuing to be in the meeting, you are consenting to being recorded and consenting to this record being released to public record requestors.

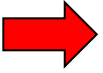




How to Participate

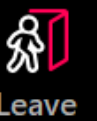
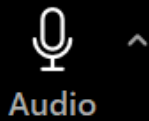
Choose one of the audio conference options

Phone call **Computer audio** Call Me

 **Join with computer audio**
Test speaker and microphone

Automatically join audio by computer when joining a webinar

City of Madison



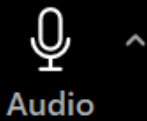
Make sure to join audio 





How to Participate

City of Madison



Audio



Raise hand



Q&A



Show captions



Leave

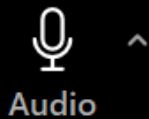
Raise your hand to be unmuted
For comments or ask additional questions.





How to Participate

City of Madison



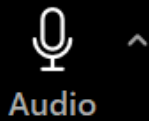
Use **Q&A button** if you have technical issues or a question for the panelists.





How to Participate

City of Madison



**Use Q&A button for all other questions.
We will answer after the presentation.**



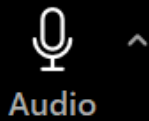


How to Participate

To leave the meeting, click leave.



City of Madison



Audio



Raise hand



Q&A



Show captions



Leave

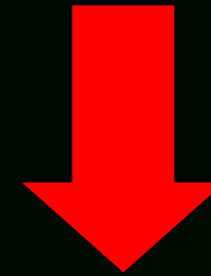




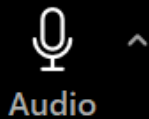
How to Participate

If you'd like to enable closed captioning, click "show closed captions" button on the bottom of the screen.

This may already be enabled. If this is not enabled, click the button to allow closed captioning.



City of Madison



Audio



Raise hand



Q&A



Show captions



Leave



Project Contact Introductions

- City Project Manager – Reid Stiteley (Streets)
- City Staff Information – Kyle Frank (Sewers), Ali Heinritz (Traffic), Kelly Post (Parks)
- Alder Information – Alder Evers (13) & Alder Knox Jr (14)

Presentation Overview

- Project Location
- Existing Conditions
- Proposed Design
- Forestry Information
- Construction & Access
- Project Schedule
- Contact Information & Resources



Project Location



Project Limits

Olin-Turville Court from John Nolen Drive to E. Lakeside Street
E. Lakeside Street from John Nolen Drive to Olin-Turville Court

Existing Conditions

Item	Existing Condition
Last Surfaced	Surfaced 1988
Pavement Surface Evaluation & Rating	Asphalt Surface. Longitudinal and transverse cracking. Rating 3
Curb Rating	Rating 7
Width	Varies 24-32 feet / 2-way traffic / parking along east side
Sidewalk	On east side
Sanitary	6-inch vitrified clay pipe installed 1928 (E. Lakeside St)
Water	8-inch ductile iron pipe installed 1988 (E. Lakeside St). Rating 9
Storm	12-inch RCP installed 1988 (E. Lakeside St) 24-inch corrugated metal 1988 (Olin-Turville culverts)

Proposed Design

➤ Street Construction

- Stay within existing City Right-of-Way
- Resurface asphalt pavement (pulverize and shape)
- Replace road base as needed
- Existing street width, lane configuration, and parking to match existing
- Replace concrete curb and gutter, sidewalk, and curb ramps as needed
- Install new pavement markings and signage
- Resurface asphalt path connections to Wingra Creek Bike Path

➤ City Utility Reconstruction

- Sanitary – Replace section of sagging sanitary main (E. Lakeside St)
- Storm – Replace corrugated metal culverts with RCP culverts (Olin-Turville Ct)
- Water – Existing water main to remain
- Lighting – Existing lighting to remain
- Signals – Existing signals to remain

➤ Additional Coordination

- Madison Gas and Electric – Private utility relocations as needed



Forestry Information

- City Engineering will review the project with City Forestry and a Forestry representative will work with the contractor and inspector during construction.
- City Forestry will perform tree pruning prior to construction in order to provide the required clearance above the street.
- After the project is complete, City Forestry will evaluate the new terraces within City right-of-way for new and replacement planting sites
- The minimum terrace width for planting is 5 feet
- 1 planned tree removal due to condition:
 - 1115 Olin-Turville Ct – 15” Maple

Construction & Access

- Residents will be notified at least 2 weeks prior to start of construction
- Allowed working hours are 7:00 am to 7:00 pm Monday – Saturday and 10:00 am to 7:00 pm Sundays
- No street parking allowed during work hours
- Overnight parking will be available to local traffic when possible
- Street closed to thru traffic during the project. Open to local traffic (residents)
- Boat launch access maintained throughout project (requires phased construction)
- The contractor is responsible for daily street sweeping and dust mitigation

Construction & Access – Water Shut-Offs

- No water shut-offs are anticipated
- Emergency shut-offs may occur if the existing main is damaged during construction.

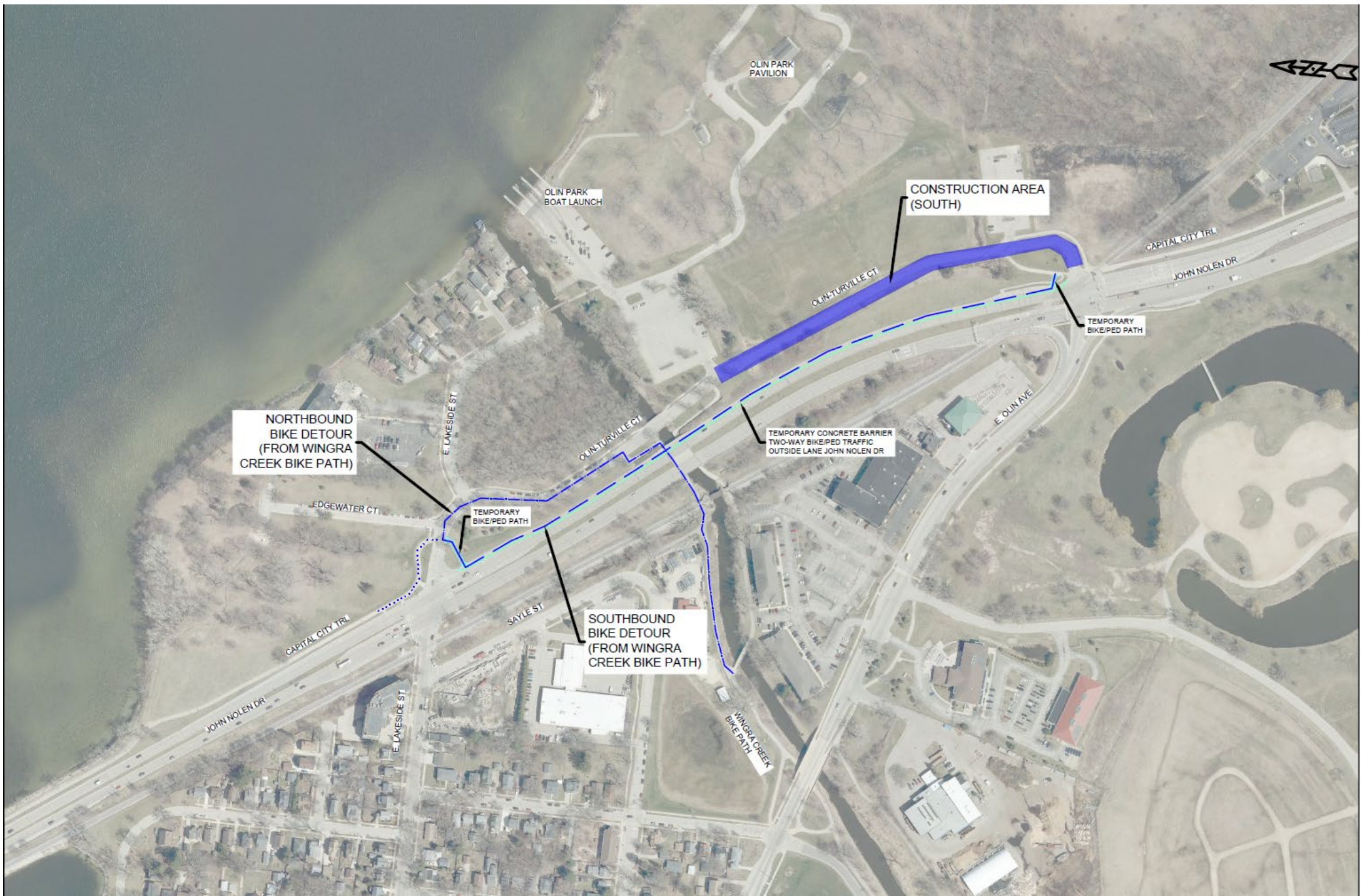
Construction & Access – Bike/Ped Detour

➤ Capital City Trl Detour

- Detour route will be used throughout construction
- Detour will route pedestrians from Capital City Trl onto John Nolen Dr
- Temporary concrete barrier wall used on John Nolen Dr to protect pedestrians
- Temporary paths and curb openings will be used to transition on and off John Nolen Dr
- Temporary signs and pavement markings will be used to mark detour and crossings

➤ Wingra Creek Bike Path

- Two detour setups will be used throughout construction due to construction phasing
- Detour will route pedestrians from Wingra Creek Bike Path utilizing existing streets and protected path on John Nolen Dr
- Temporary signs and pavement markings will be used to mark detour and crossings



**NORTHBOUND
BIKE DETOUR
(FROM WINGRA
CREEK BIKE PATH)**

TEMPORARY
BIKE/PED PATH

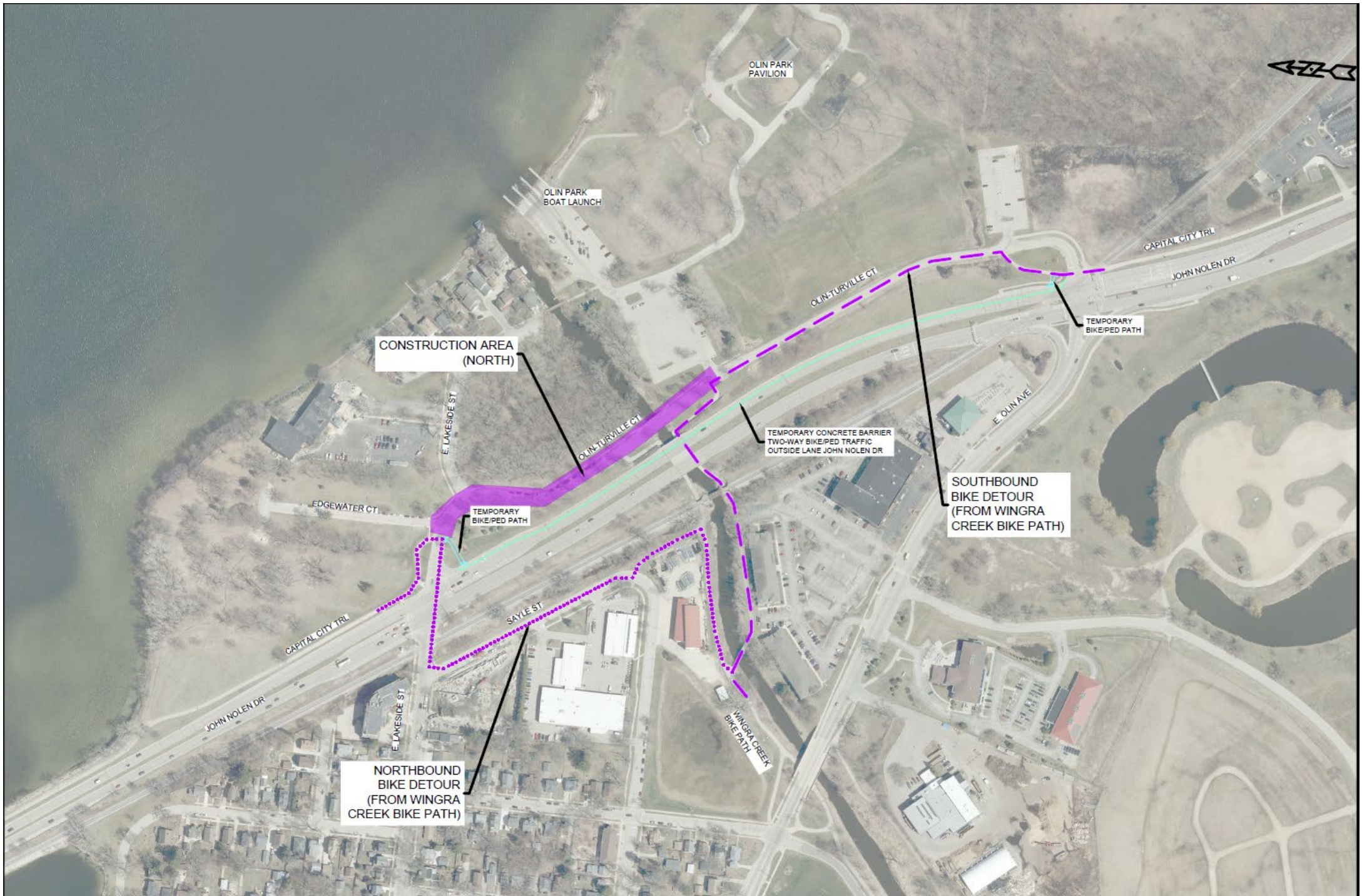
**SOUTHBOUND
BIKE DETOUR
(FROM WINGRA
CREEK BIKE PATH)**

TEMPORARY CONCRETE BARRIER
TWO-WAY BIKE/PED TRAFFIC
OUTSIDE LANE JOHN NOLEN DR

**CONSTRUCTION AREA
(SOUTH)**

TEMPORARY
BIKE/PED PATH





Approximate Project Schedule

- May 22, 2024: BPW Approval Public Hearing
- June 6, 2024: Common Council Approval Hearing
- June 13, 2024: Advertise for Bids
- September 9, 2024: Anticipated Start of Construction
- October 28, 2024: Anticipated End of Construction

Contact Information & Resources

Project Manager	Reid Stiteley	608-266-4093	rstiteley@cityofmadison.com
Sanitary & Storm Engineer	Kyle Frank	608-266-4098	kfrank@cityofmadison.com
Traffic Engineer	Alexandra Heinritz	608-267-1102	aheinritz@cityofmadison.com
Forestry Specialist	Brandon Sly	608-266-4816	bsly@cityofmadison.com
Park and Street Use Supervisor	Kelly Post	608-264-9289	kpost@cityofmadison.com
Pedestrian Bicycle Administrator	Renee Callaway	608-266-6225	recallaway@cityofmadison.com
Public Information Officer	Hannah Mohelnitzky	608-669-3560	hmohelnitzky@cityofmadison.com

- Project Website:
- Sign-up for project email updates on the website: <https://www.cityofmadison.com/OlinTurvilleLakeside>
 - Updates on closures & work progress will be posted to the project website
 - Recording for this meeting will be posted on project webpage



Facebook: City of Madison Engineering



Twitter: @MadisonEngr



Everyday Engineering Podcast: iTunes, GooglePlay

CITY OF MADISON

