



Capital City Trail Storm Sewer

Public Information Meeting

Public Information Meeting
City of Madison Engineering Division
February 20, 2025

Thank you for attending. We will begin shortly...



Rules and Housekeeping Items for this Meeting

- This meeting will be **recorded** and posted to the project page.
- All attendees should be **muted** to keep background noise to a minimum.
- Use the **“Q and A”** button for technical issues with meeting to troubleshoot with staff to assist.
- Use the **“Q and A”** button to type questions about presentation. Questions will be answered live after the presentation.
- Inappropriate questions may be dismissed.
- Use the **“raise your hand”** button to verbally ask your question. You will be prompted to unmute when it is your turn.



This meeting is being recorded.

It is a public record subject to disclosure.

By continuing to be in the meeting, you are consenting to being recorded and consenting to this record being released to public record requestors.



Meeting Technical Housekeeping

- This meeting will be recorded and posted to the project page.
- All attendees should be muted to keep background noise to a minimum.
- Use the “Q and A” button for technical issues with meeting to troubleshoot with staff to assist.
- Use the “Q and A” button to type questions about presentation. Questions will be answered live after the presentation.
- Inappropriate questions may be dismissed.
- Use the “raise your hand” button to verbally ask your question. You will be prompted to unmute when it is your turn.



This meeting is being recorded.

It is a public record subject to disclosure.

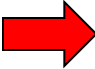
By continuing to be in the meeting, you are consenting to being recorded and consenting to this record being released to public record requestors.



How to Participate

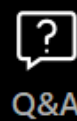
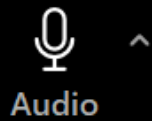
Choose one of the audio conference options

Phone call **Computer audio** Call Me

 **Join with computer audio**
Test speaker and microphone

Automatically join audio by computer when joining a webinar

City of Madison



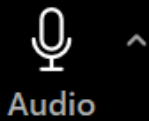
Make sure to join audio 





How to Participate

City of Madison



Audio

Raise hand

Q&A

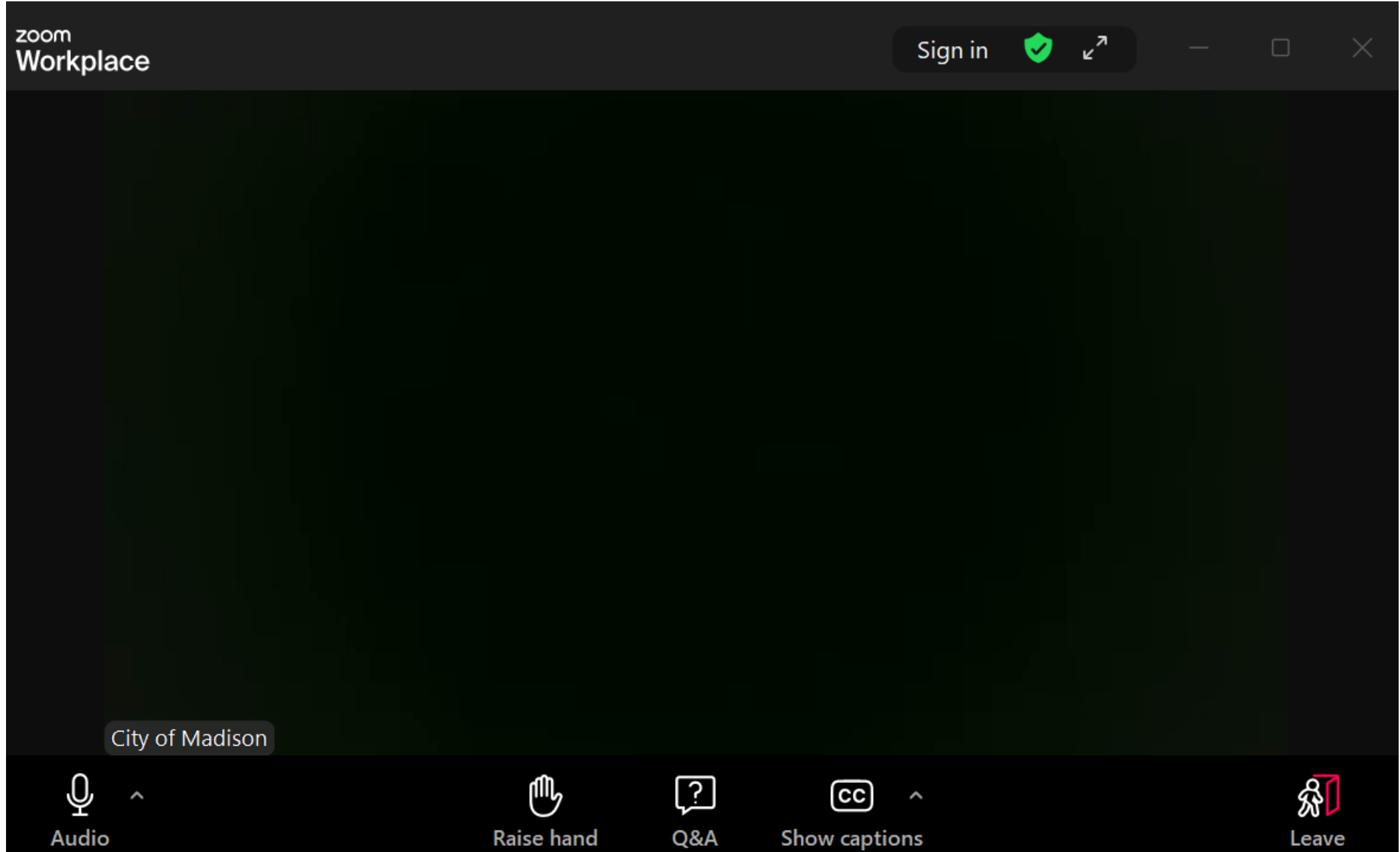
Show captions

Leave

Raise your hand to be unmuted
For comments or ask additional questions.



How to Participate



Use **Q&A button** if you have technical issues or a question for the panelists.



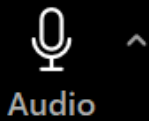
CITY OF MADISON





How to Participate

City of Madison



**Use Q&A button for all other questions.
We will answer after the presentation.**



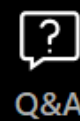
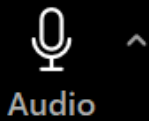


How to Participate

To leave the meeting, click leave.



City of Madison

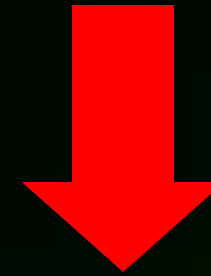




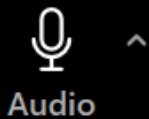
How to Participate

If you'd like to enable closed captioning, click "show closed captions" button on the bottom of the screen.

This may already be enabled. If this is not enabled, click the button to allow closed captioning.



City of Madison



Audio



Raise hand



Q&A



Show captions



Leave



Presentation Overview

Thank You for participating!

- Welcome (Hannah Mohelnitzky, Public Information Officer, City of Madison)
- Introduction (Alder Marsha Rummel, District 6)
- Presentation *Daniel Olivares, City Engineering - Sewer Section*
- Q&A (facilitated by Hannah Mohelnitzky)
 - Assisted by:
 - *Janet Schmidt, City Engineering – Principal Engineer, Sewer Section*
- Presentation will be available on the website
 - <https://www.cityofmadison.com/engineering/projects/capital-city-trail-storm-sewer-replacement>



Presentation Overview

- ▶ **Project Location**
- ▶ Project Scope & Existing Conditions
- ▶ Proposed Design
- ▶ Public Right-Of-Way
- ▶ Forestry Information
- ▶ Project Approval Schedule
- ▶ Construction Schedule & Access
- ▶ Contact Information & Resources
- ▶ Q&A



Project Location

CAPITAL CITY TRAIL (E. MAIN ST.)

- BETWEEN S. BLOUNT ST. & S. BREARLY ST.



Project Area

- PLANNED DISTURBANCE WILL BE LIMITED TO AREA SOUTH OF COMMUTER PATH.
- SEWER WILL BE INSTALLED THROUGH CROSSINGS AT S. LIVINGSTON ST, S. PATERSON ST, & S. BREARLY ST
- COMMUTER PATH – PRIORITIZE ACCESS, MIN. CLOSURES, TEMP. ROUTING/FLAGGING
- STREET INTERSECTIONS MAY BE CLOSED AT TIMES
- SIDEWALKS SHOULD REMAIN ACCESSIBLE



Presentation Overview

- ▶ Project Location
- ▶ **Project Scope & Existing Conditions**
- ▶ Proposed Design
- ▶ Public Right-Of-Way
- ▶ Forestry Information
- ▶ Project Approval Schedule
- ▶ Construction Schedule & Access
- ▶ Contact Information & Resources
- ▶ Q&A



Project Scope

- ▶ **REPLACE PUBLIC STORM SEWER (1909) WITH NEW HERCP AND BOX CULVERT**
 - ▶ APPROX 1750 L.F. OF SEWER MAIN
- ▶ **INCREASE PIPE SIZE & CONVEYANCE CAPACITY**
- ▶ **INSTALL WATER-TIGHT SEWER**
 - ▶ MINIMIZE INFLOW FROM GROUNDWATER
 - ▶ REDUCE ROOT INTRUSION
 - ▶ IMPROVE ABILITY TO CLEAN/CLEAR SEWER
- ▶ **INSTALL INLETS TO IMPROVE COLLECTION OF SURFACE OVERFLOWS**



FRACTURING FROM ROOT INTRUSION



IMPROVISED PATCH REPAIRS



PATCH W/PLYWOOD FORM IN PLACE,
GRAVEL ACCUMULATION



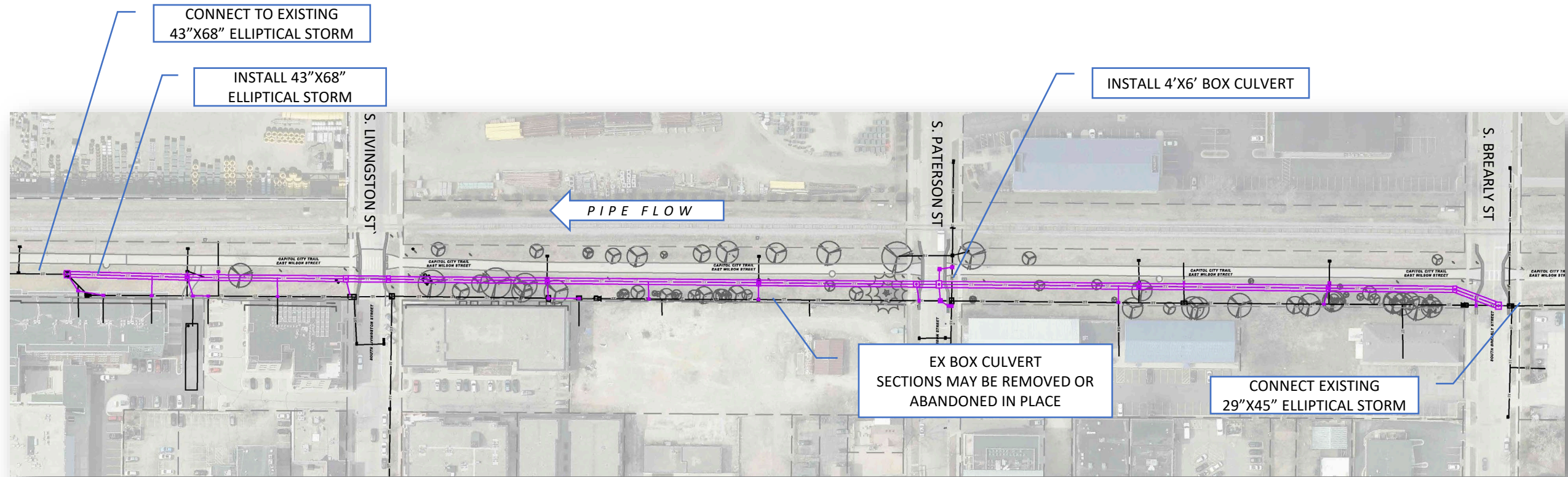
ROOF SPALLING IN AREAS BELOW TREES,
EXPOSING STEEL REBAR

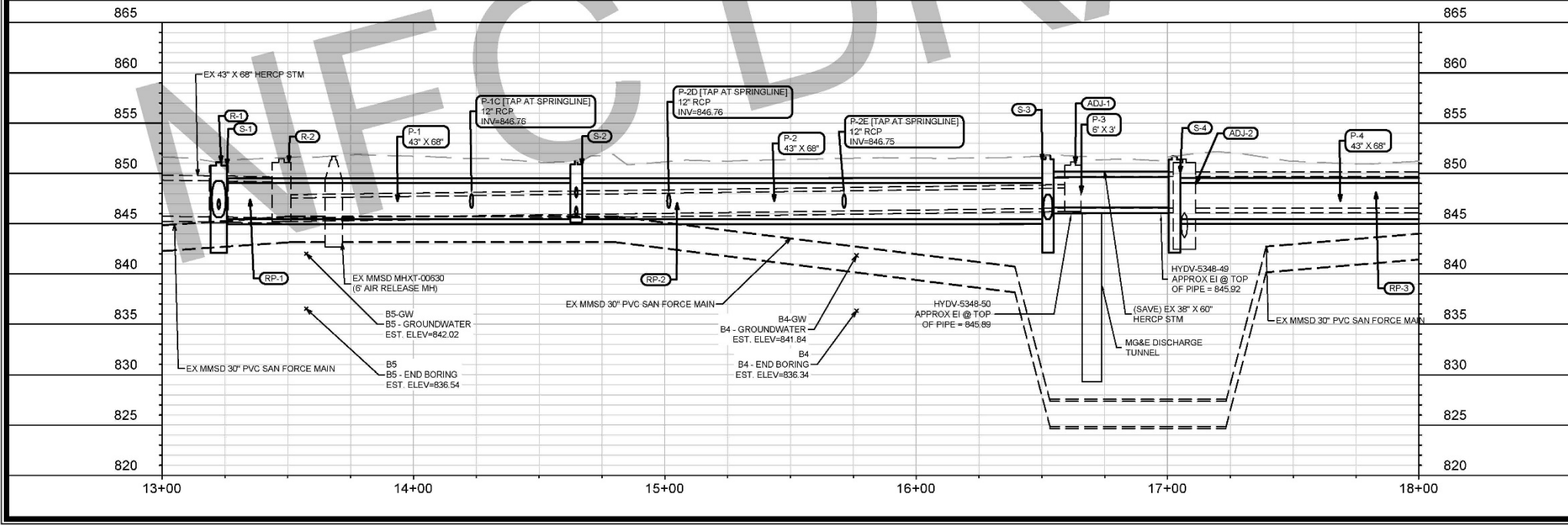
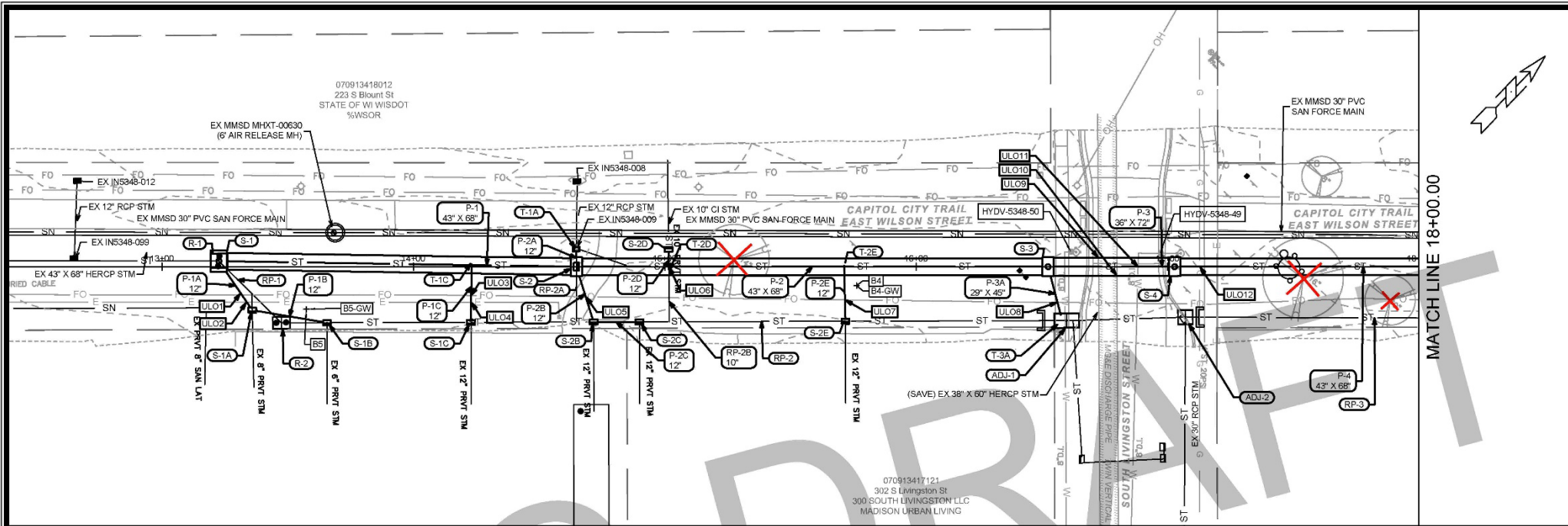
Presentation Overview



- ▶ Project Location
- ▶ Project Scope & Existing Conditions
- ▶ **Proposed Design**
- ▶ Public Right-Of-Way
- ▶ Forestry Information
- ▶ Project Approval Schedule
- ▶ Construction Schedule & Access
- ▶ Contact Information & Resources
- ▶ Q&A



Proposed Storm Design

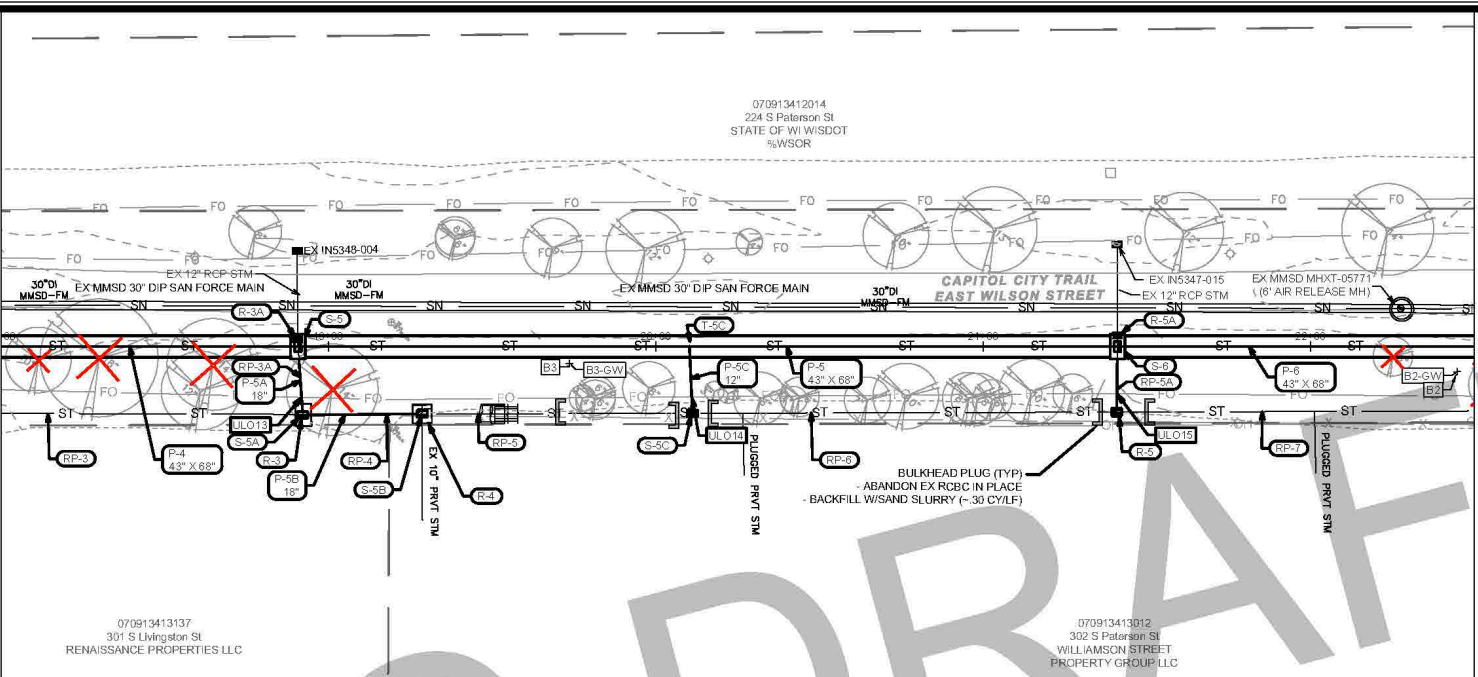




SEWER PLAN AND PROFILE - CAPITAL CITY TRAIL STORM SEWER		15271	MADISON, WI	
CAPITAL CITY TRAIL STORM SEWER		#####	CONTRACT NO.:	
I:\DESIGN\Projects\15271\CAD\Sewers\15271SWR-PipeNetwork.dwg				
				
15271		U-1		

MATCH LINE 18+00.00

MATCH LINE 22+50.00



870

870

865

865

860

860

855

855

850

850

845

845

840

840

835

835

830

830

825

825

18+00

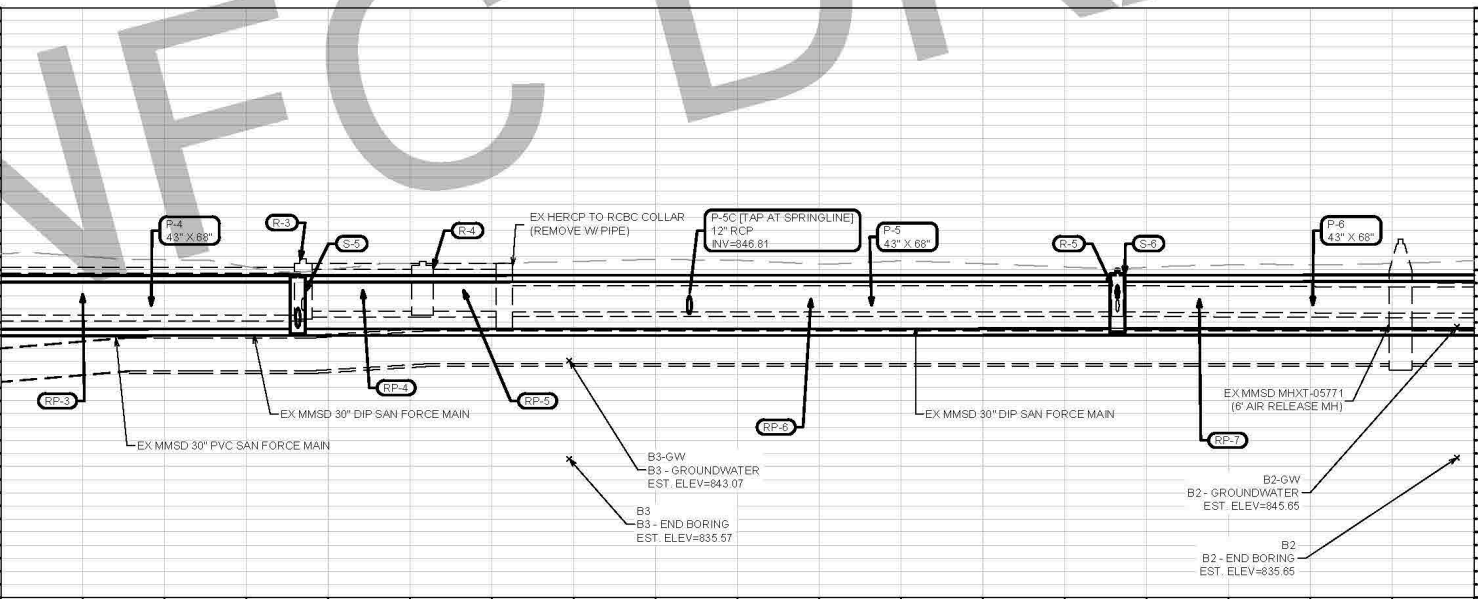
19+00

20+00

21+00

22+00

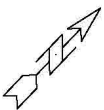
22+50




070913412014
 224 S Paterson St
 STATE OF WI WISDOT
 %WSOR

070913413137
 301 S Livingston St
 RENAISSANCE PROPERTIES LLC

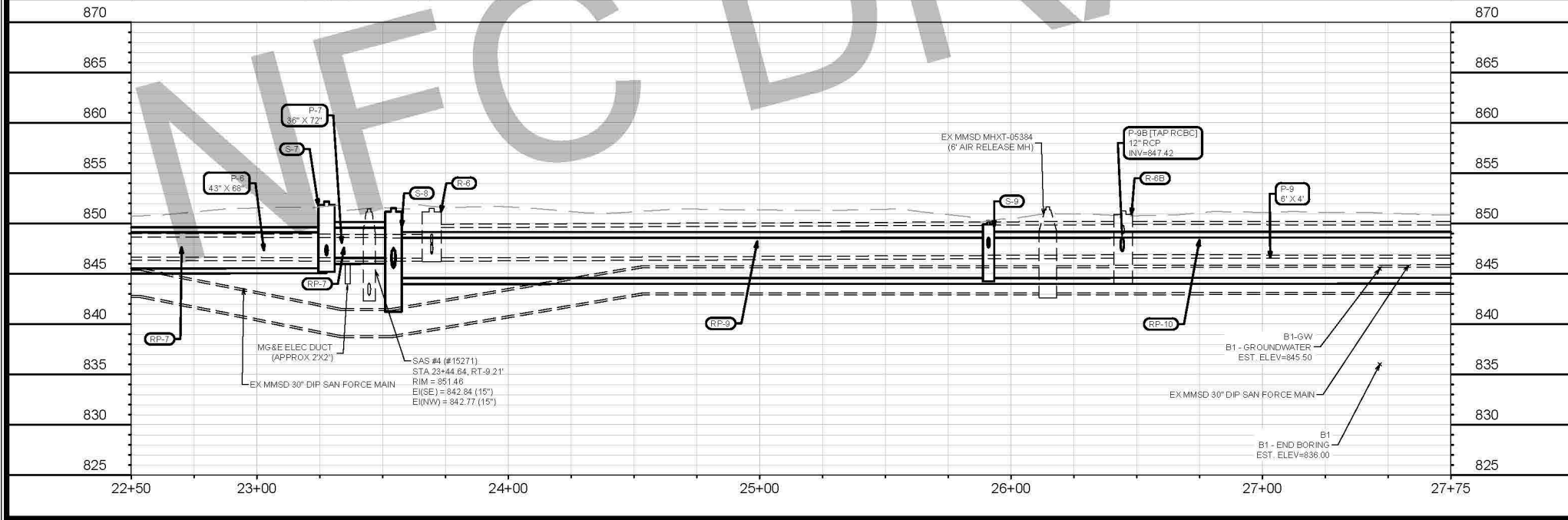
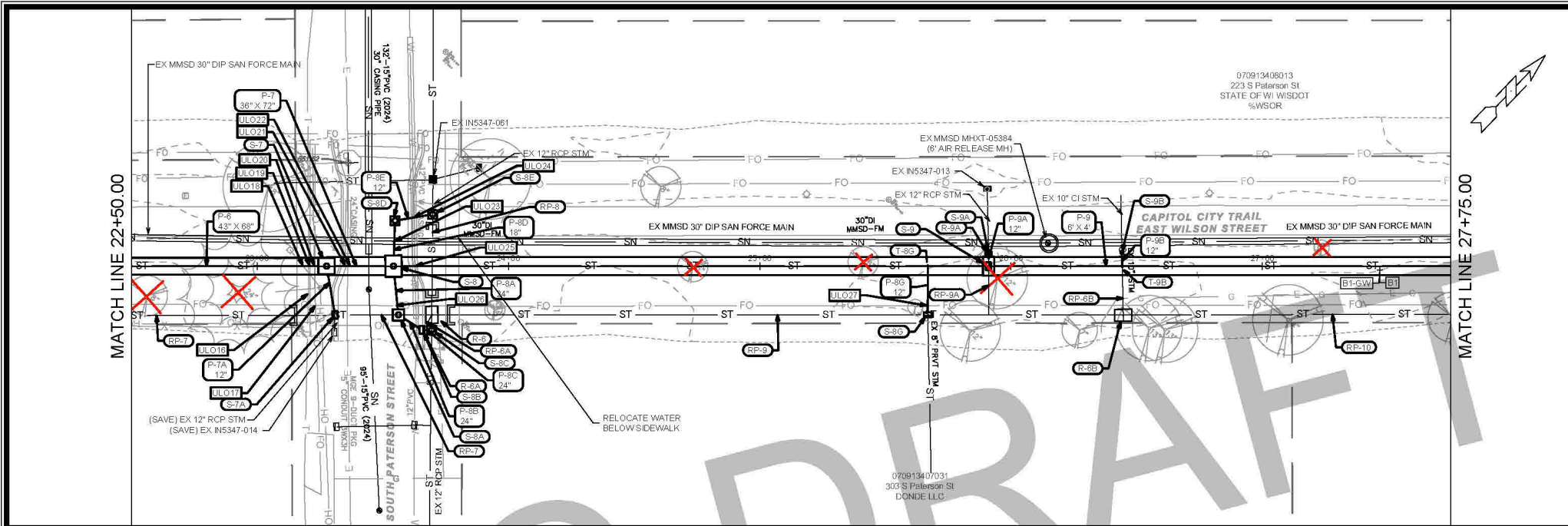
070913413812
 302 S Paterson St
 WILLAMSON STREET
 PROPERTY GROUP LLC



NEFC DRAFT

SEWER PLAN AND PROFILE - CAPITAL CITY TRAIL STORM SEWER		15271
CAPITAL CITY TRAIL STORM SEWER		MADISON, WI
M:\DESIGN\Projects\15271\CAD\ISewers\15271SWR-PipeNetwork.dwg		CONTRACT NO. #####
		U-2
15271		U-2
U-2		





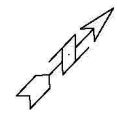
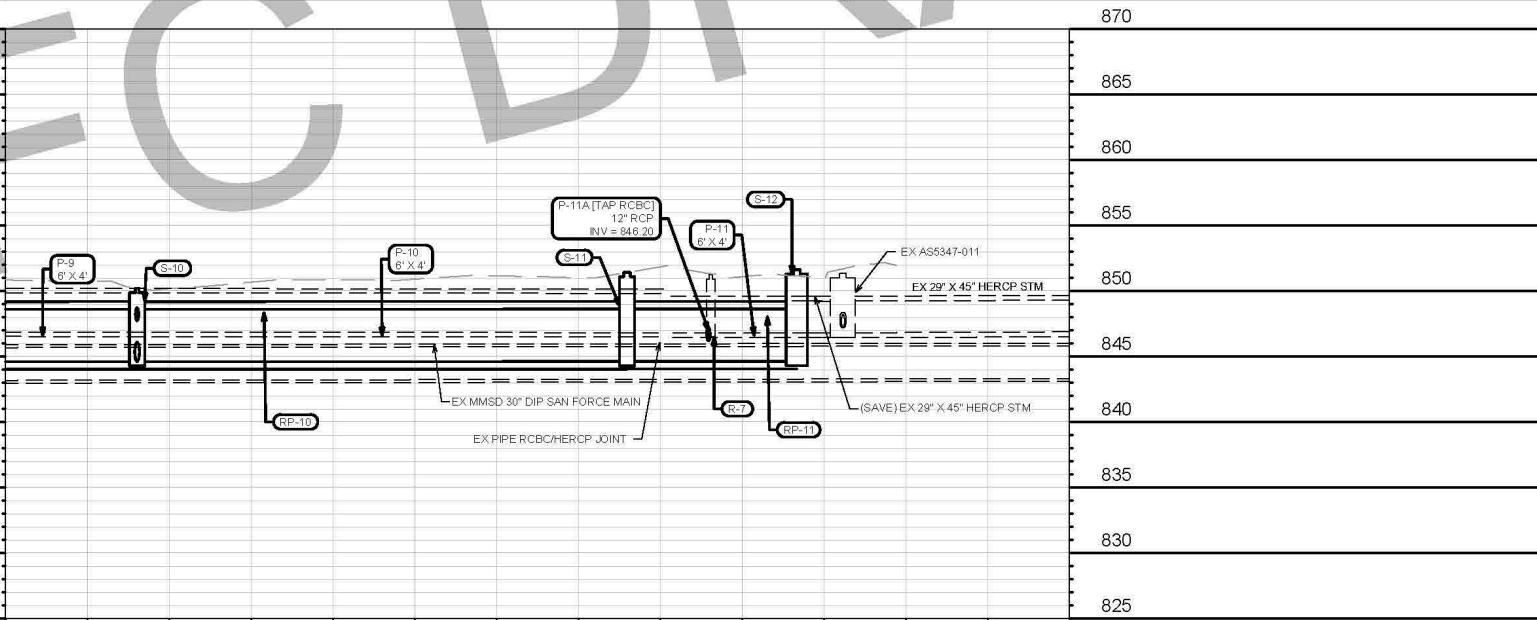
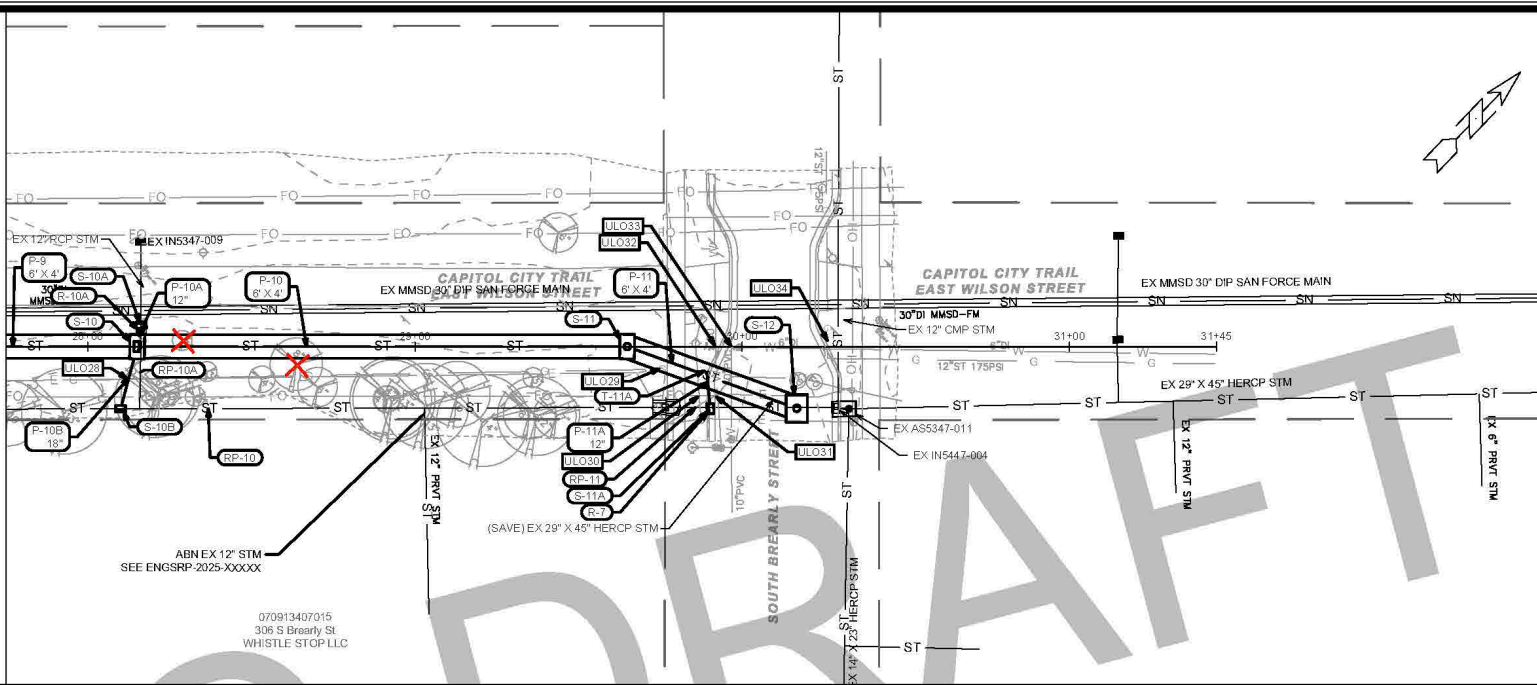
SEWER PLAN AND PROFILE - CAPITAL CITY TRAIL STORM SEWER		15271
CAPITAL CITY TRAIL STORM SEWER		MADISON, WI
M:\DESIGN\Projects\15271\CAD\ISewer\15271SWR-PipeNetwork.dwg		#####
CONTRACT NO.:		15271
U-3		U-3




MATCH LINE 27+75.00

870
865
860
855
850
845
840
835
830
825

27+75 28+00 29+00 30+00 31+00



NEEC DRAFT

SEWER PLAN AND PROFILE - CAPITAL CITY TRAIL STORM SEWER	15271	MADISON, WI
CAPITAL CITY TRAIL STORM SEWER	#####	CONTRACT NO.
M:\DESIGN\Projects\15271\CAD\ISewers\15271SWR-PipeNetwork.dwg Date: 2/16/2011 12:30 PM User: T-S Scale: U-4		
 15271 U-4		



Presentation Overview

- ▶ Project Location
- ▶ Project Scope & Existing Conditions
- ▶ Proposed Design
- ▶ **Public Right-Of-Way**
- ▶ Forestry Information
- ▶ Project Approval Schedule
- ▶ Construction Schedule & Access
- ▶ Contact Information & Resources
- ▶ Q&A



Public Right-Of-Way

- EXISTING STORM SEWER IS INSTALLED WITHIN PUBLIC ROW, BUT CLOSE TO SHARED PROPERTY LINE
- STORM SEWER ALIGNMENT WILL BE RELOCATED WITHIN ROW
- LOCATION SELECTED TO:
 - REDUCE IMPACTS TO COMMUTER PATH
 - ACCOMMODATE SEWER ABANDONMENT
 - PROVIDE EASIEST ACCESS FOR PRIVATE STORM RECONNECTIONS
 - REDUCE TREE REMOVALS
 - AVOID UTILITY CONFLICTS
 - AVOID RAILROAD PERMITTING AND CONFLICTS

Presentation Overview

- ▶ Project Location
- ▶ Project Scope & Existing Conditions
- ▶ Proposed Design
- ▶ Public Right-Of-Way
- ▶ **Forestry Information**
- ▶ Project Approval Schedule
- ▶ Construction Schedule & Access
- ▶ Contact Information & Resources
- ▶ Q&A



Forestry Information

- ▶ *ENGINEERING IS COORDINATING WITH CITY FORESTRY TO COMPLETE A TREE INVENTORY*
- ▶ *FORESTRY WILL ASSIST WITH:*
 - *DETERMINING THE HEALTH OF TREES*
 - *DETERMINING PRUNING & MAINTENANCE REQUIRED FOR CONSTRUCTION ACCESS*
 - *OPTIONS FOR REPLACEMENT*
- ▶ *PLANS WILL INCLUDE “NO ROOT CUT” (NRC) NOTES WHERE POSSIBLE/APPLICABLE*

Presentation Overview

- ▶ Project Location
- ▶ Project Scope & Existing Conditions
- ▶ Proposed Design
- ▶ Public Right-Of-Way
- ▶ Forestry Information
- ▶ **Project Approval Schedule**
- ▶ Construction Schedule & Access
- ▶ Contact Information & Resources
- ▶ Q&A



Project Approval Schedule

- *BOARD OF PUBLIC WORKS: MARCH 12, 2025*
 - *APPROVE PLANS & SPECIFICATIONS*
- *COMMON COUNCIL: MARCH 25, 2025*
- *FIRST BID: MARCH 27, 2025 OR APRIL 24, 2025*
 - *PENDING COORDINATION WITH CITY ENGINEERING DEPARTMENTS & FORESTRY*
- *POTENTIAL START DATES: JUNE 16, 2025 OR JULY 14, 2025*



Construction & Access

- *TRAFFIC ENGINEERING WILL PROVIDE:*
 - *SINAGE & TRAFFIC CONTROL REQUIREMENTS*
 - *DATES & DURATION OF ROW CLOSURES AFFECTING TRANSPORTATION*
- *PUBLIC WORKS CONTRACTOR ACCESS & STORAGE WILL BE LIMITED TO RIGHT OF WAYS (ROW) INCLUDING THE AREA ALONG THE PATH (WHICH IS ROW).*
 - *TEMPORARY FENCING MAY BE PLACED ALONG SHARED LOT LINES*
 - *SPECIFIC LAYDOWN & VEHICLE STORAGE REQUIREMENTS WILL BE SPECIFIED IN CONTRACT & PRECONSTRUCTION MEETINGS*



Presentation Overview

- ▶ Project Location
- ▶ Project Scope & Existing Conditions
- ▶ Proposed Design
- ▶ Public Right-Of-Way
- ▶ Forestry Information
- ▶ Project Approval Schedule
- ▶ Construction Schedule & Access
- ▶ **Contact Information & Resources**
- ▶ Q&A

Contact Information & Resources

▶ Engineering

- Daniel Olivares, (608) 261-9285, daolivares@cityofmadison.com
- Janet Schmidt, (608) 261-9688, jschmidt@cityofmadison.com
- Public Information Officer, Hannah Mohelnitzky, 669-3560, hmoelnitzky@cityofmadison.com

▶ Project Website: <https://www.cityofmadison.com/engineering/projects/capital-city-trail-storm-sewer-replacement>

- Sign-up for project email updates on the website
- A PDF of the presentation, design information, & construction progress will be posted to the project website

▶ Facebook – City of Madison Engineering

▶ Instagram -- @MadisonEngr

▶ X – @MadisonEngr

▶ Podcast: Search Everyday Engineering on Apple iTunes or your podcast provider

Presentation Overview

- ▶ Project Location
- ▶ Project Scope & Existing Conditions
- ▶ Proposed Design
- ▶ Public Right-Of-Way
- ▶ Forestry Information
- ▶ Project Approval Schedule
- ▶ Construction Schedule & Access
- ▶ Contact Information & Resources
- ▶ **Q&A**



Thank You for Attending!

- ▶ **Q&A**
 - Please use the **“Q&A”** option at the bottom of the screen to type a question.
 - To ask a question verbally, click the **“raise hand”** option at the bottom of your screen and the host will unmute you.

