



STRAND
ASSOCIATES®

Excellence in Engineering Since 1946

City of Madison

E. JOHNSON STREET PROJECT

(North Baldwin Street to First Street)

April 4, 2019

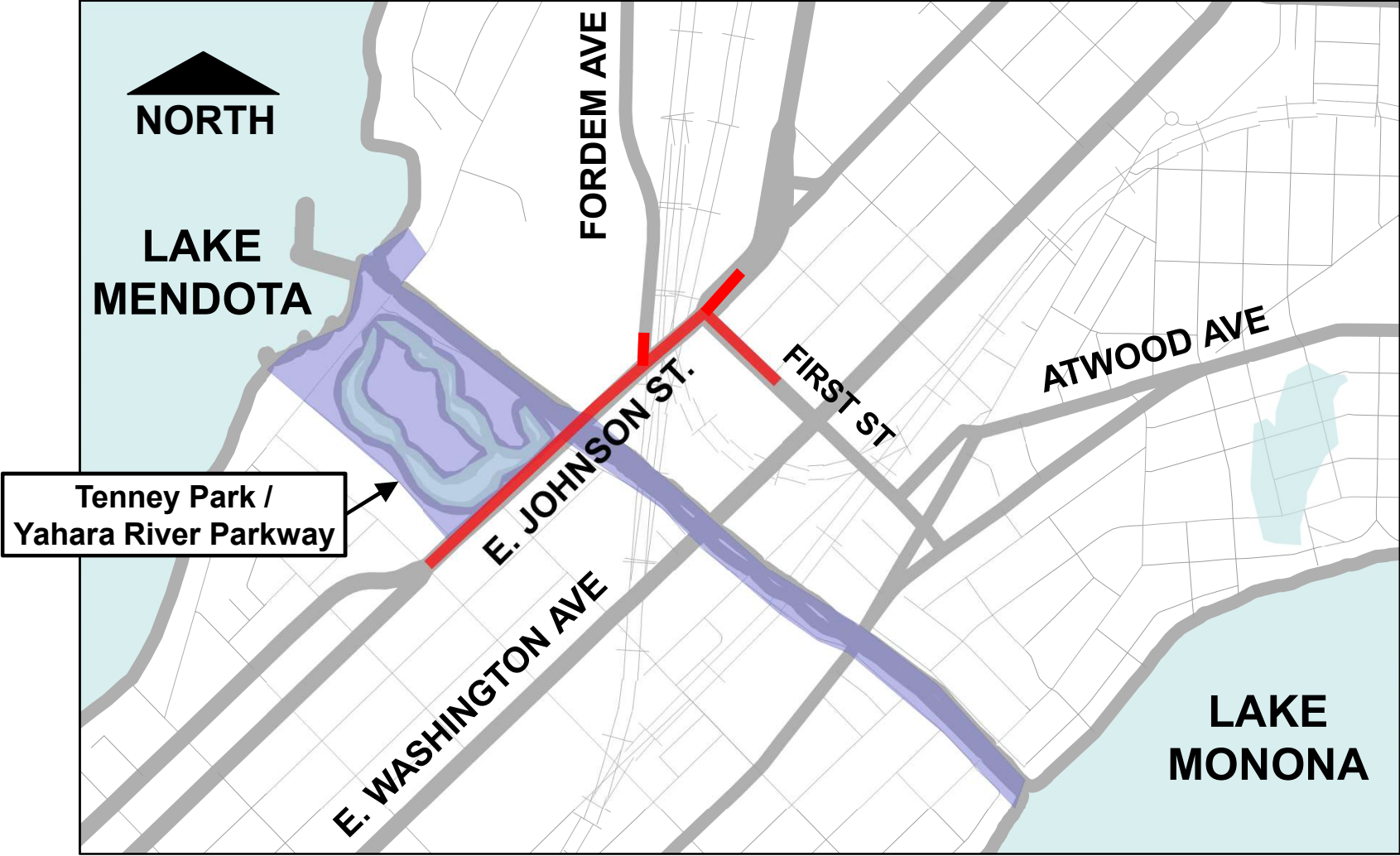


Overview

- Project Location & Limits
- Need for Project
- Schedule
- Overview of Design
- Project Website



Project Location and Limits



Need for Project

- Why Improve E. Johnson Street?
 - Incomplete Bicycle Accommodations
 - Poor Pavement Condition
 - Address Long-Term Operational Needs
 - Underground Utilities



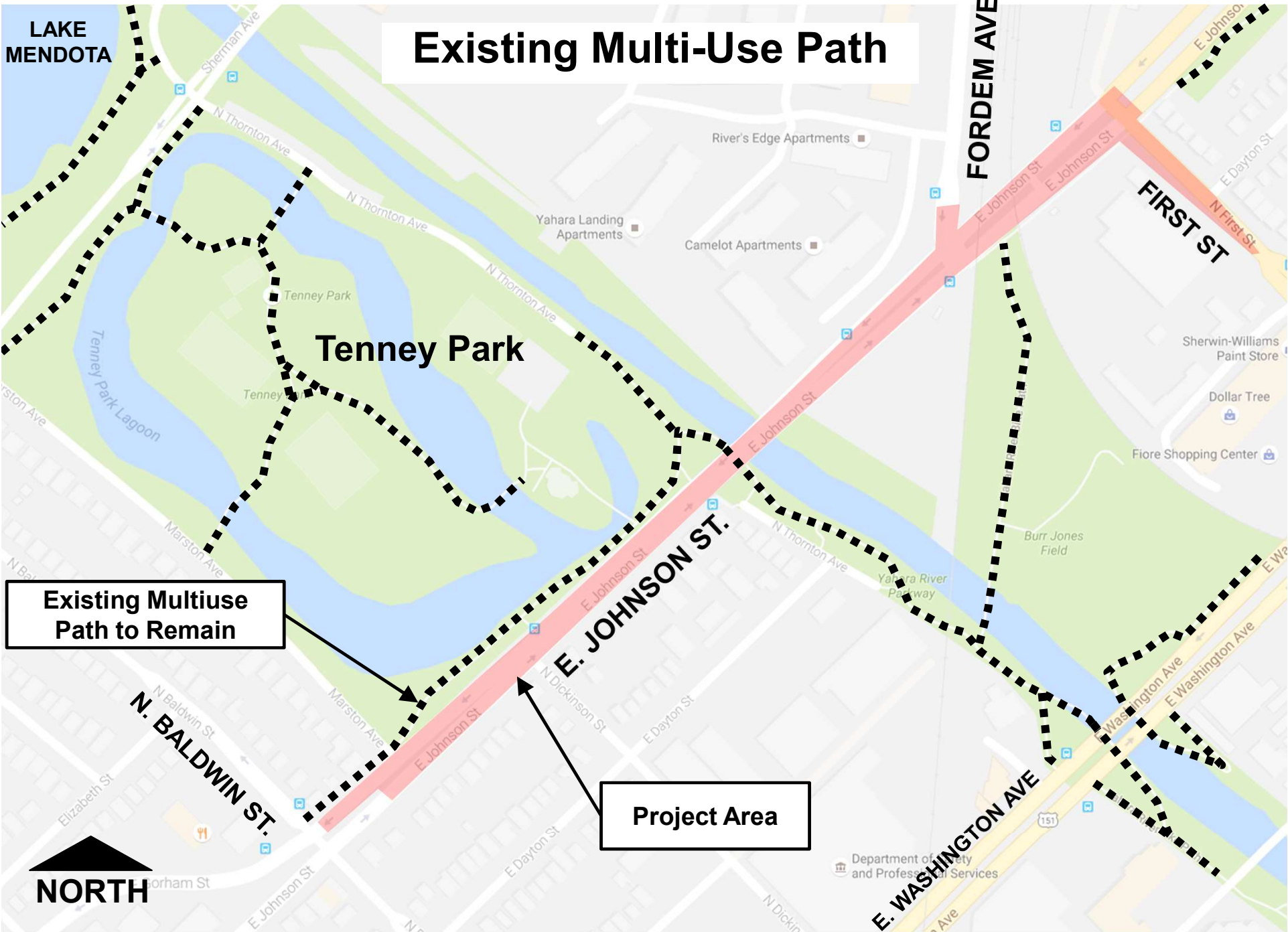
Project Scope:

- New Pavement
- Curb and Gutter
- Widening of First Street
- Sidewalk Repairs and New Multi-Use Path
- Storm Sewer
- Lighting
- Sanitary Sewer
- Water Main
- Pavement Marking
- Signing

Overview of Project

- Typical Cross Section
- First Street Intersection Improvements
- Multimodal & Crossing Improvements
- 2018 Flooding Considerations
- Lighting
- Construction Staging





Existing Multi-Use Path

Tenney Park

FORDEM AVE

FIRST ST

LAKE MENDOTA

Existing Multiuse Path to Remain

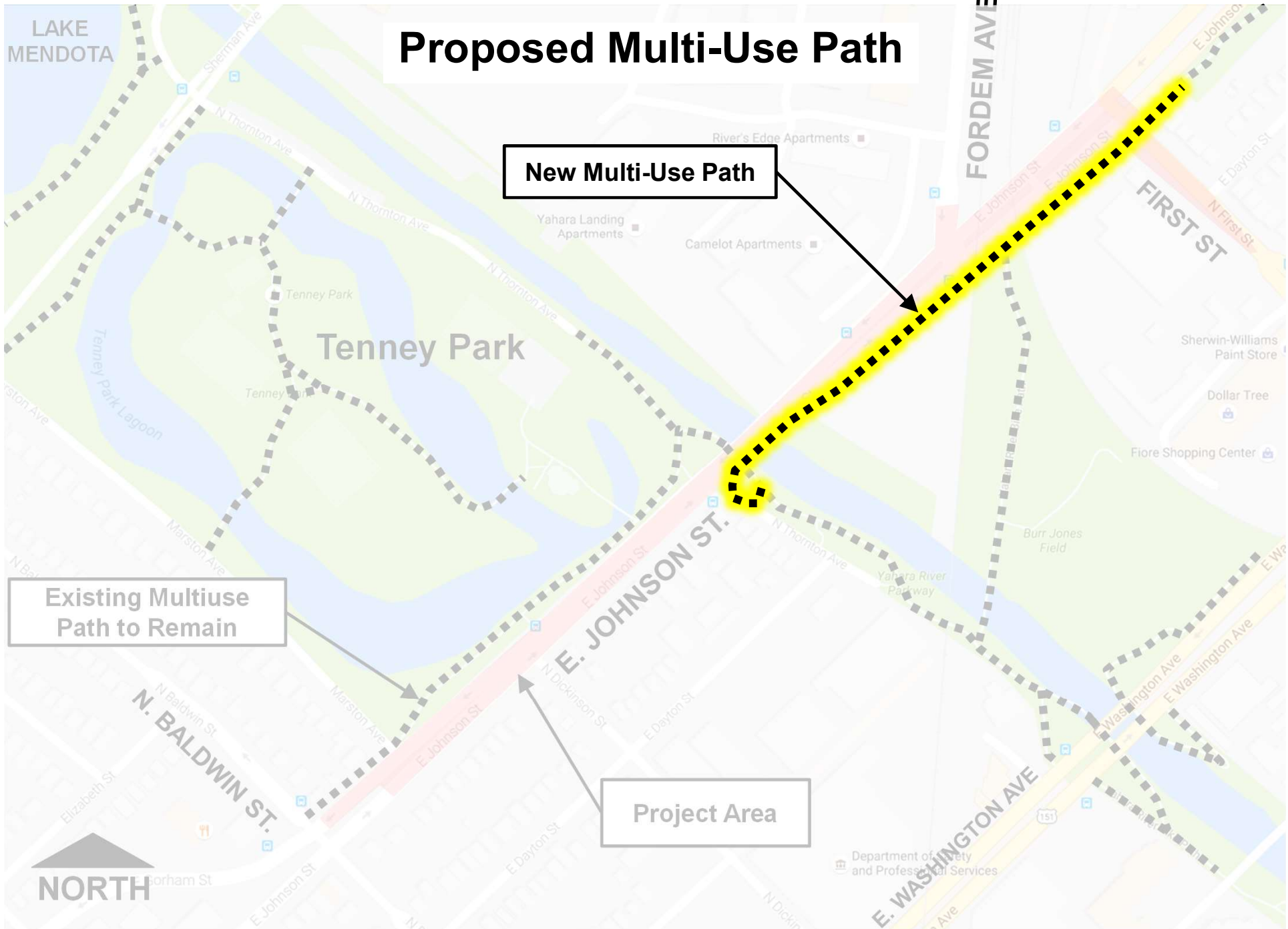
Project Area

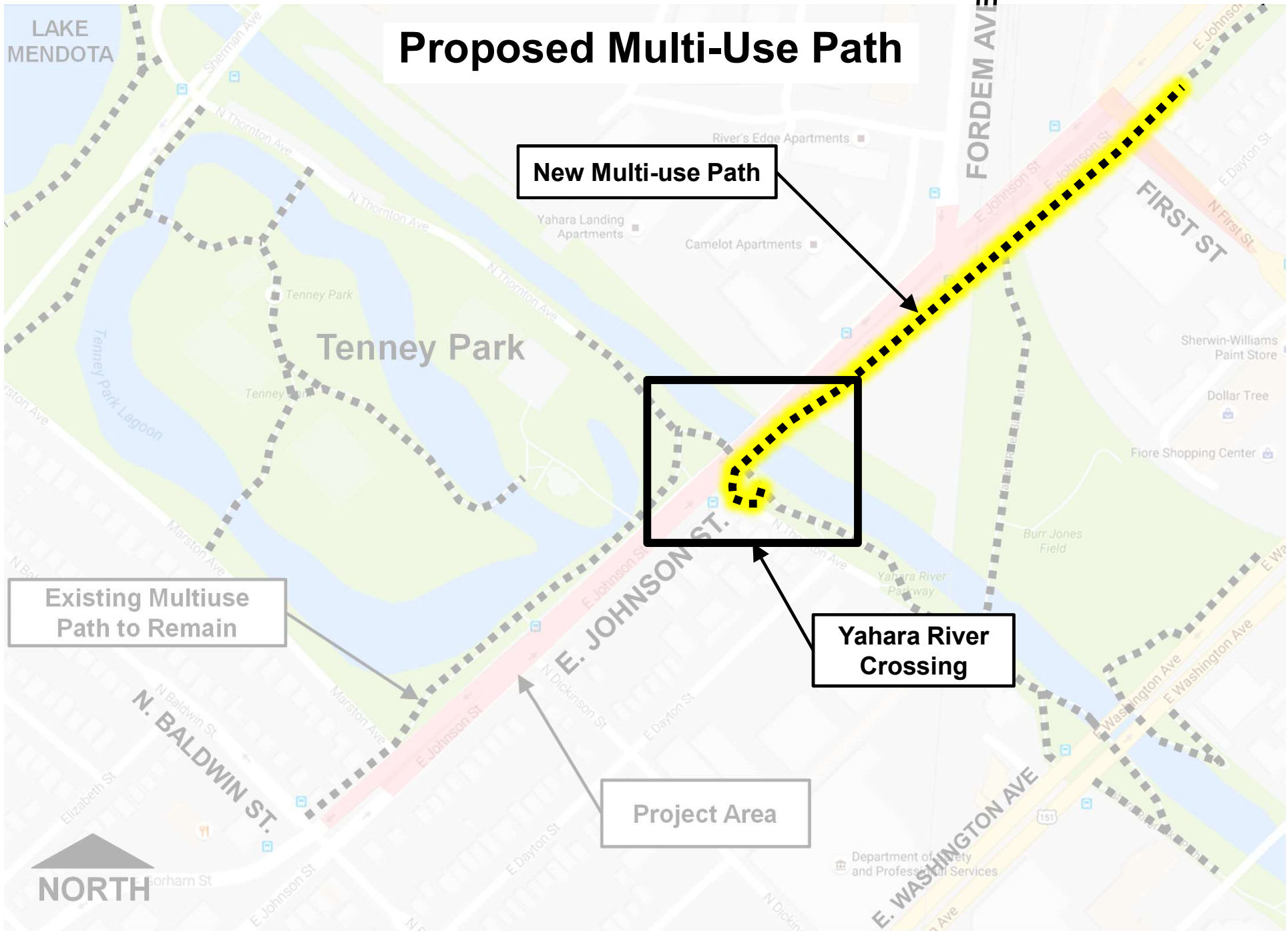
NORTH

N. BALDWIN ST.

E. JOHNSON ST.

E. WASHINGTON AVE





Proposed Multi-Use Path

New Multi-use Path

Existing Multi-use Path to Remain

Yahara River Crossing

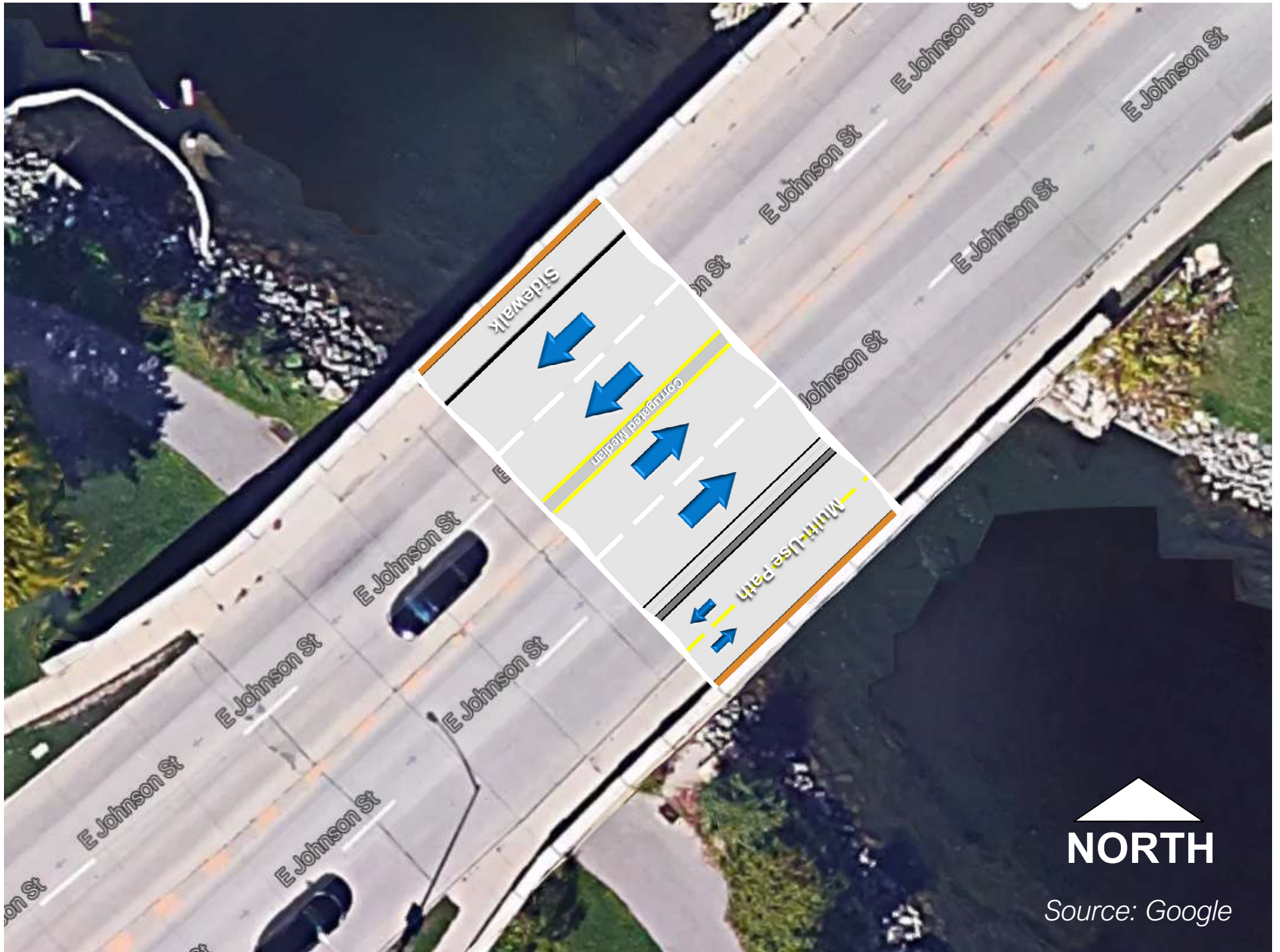
Project Area



Existing Yahara River Bridge Looking East



Source: Google




NORTH

Source: Google



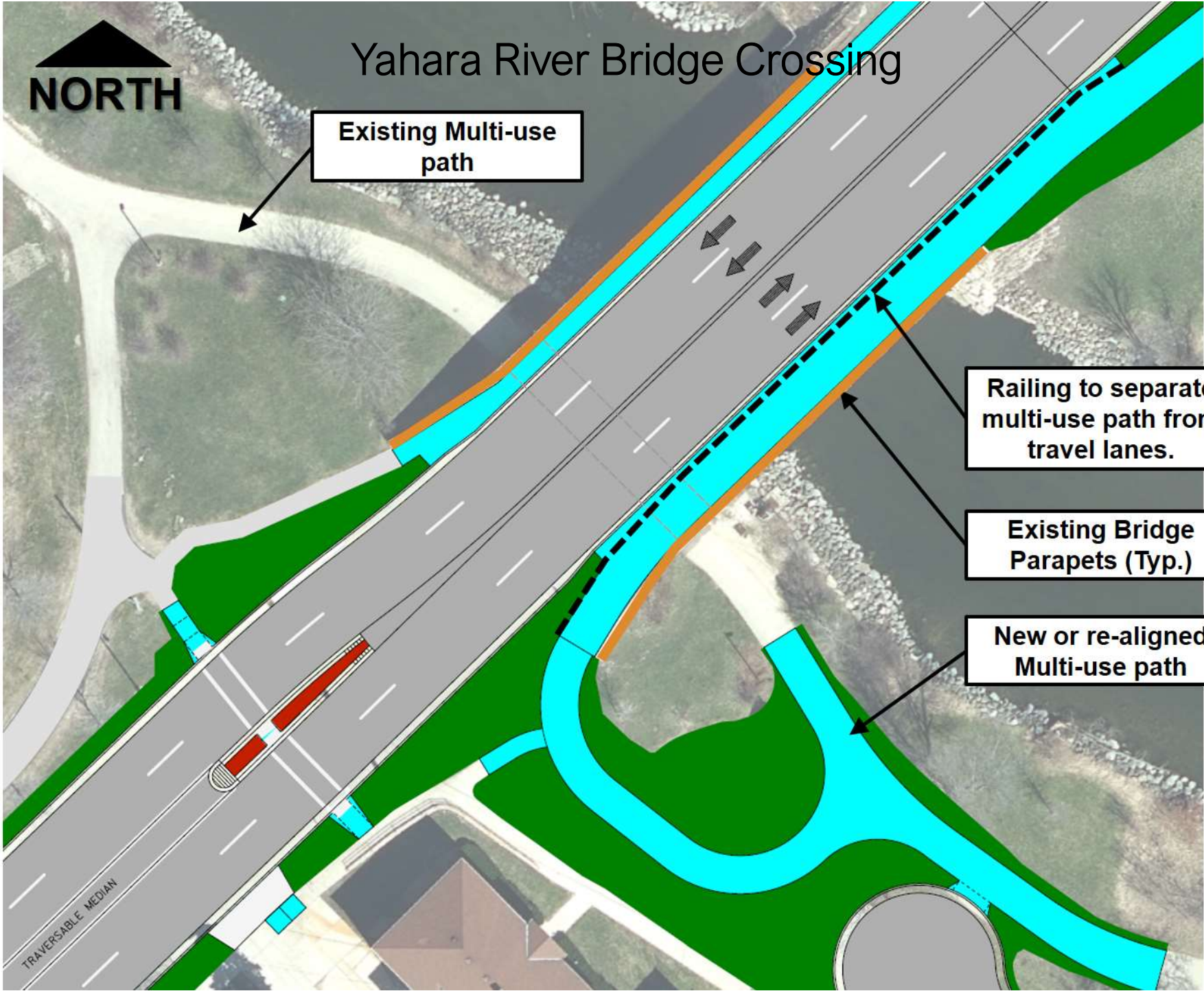
Yahara River Bridge Crossing

Existing Multi-use path

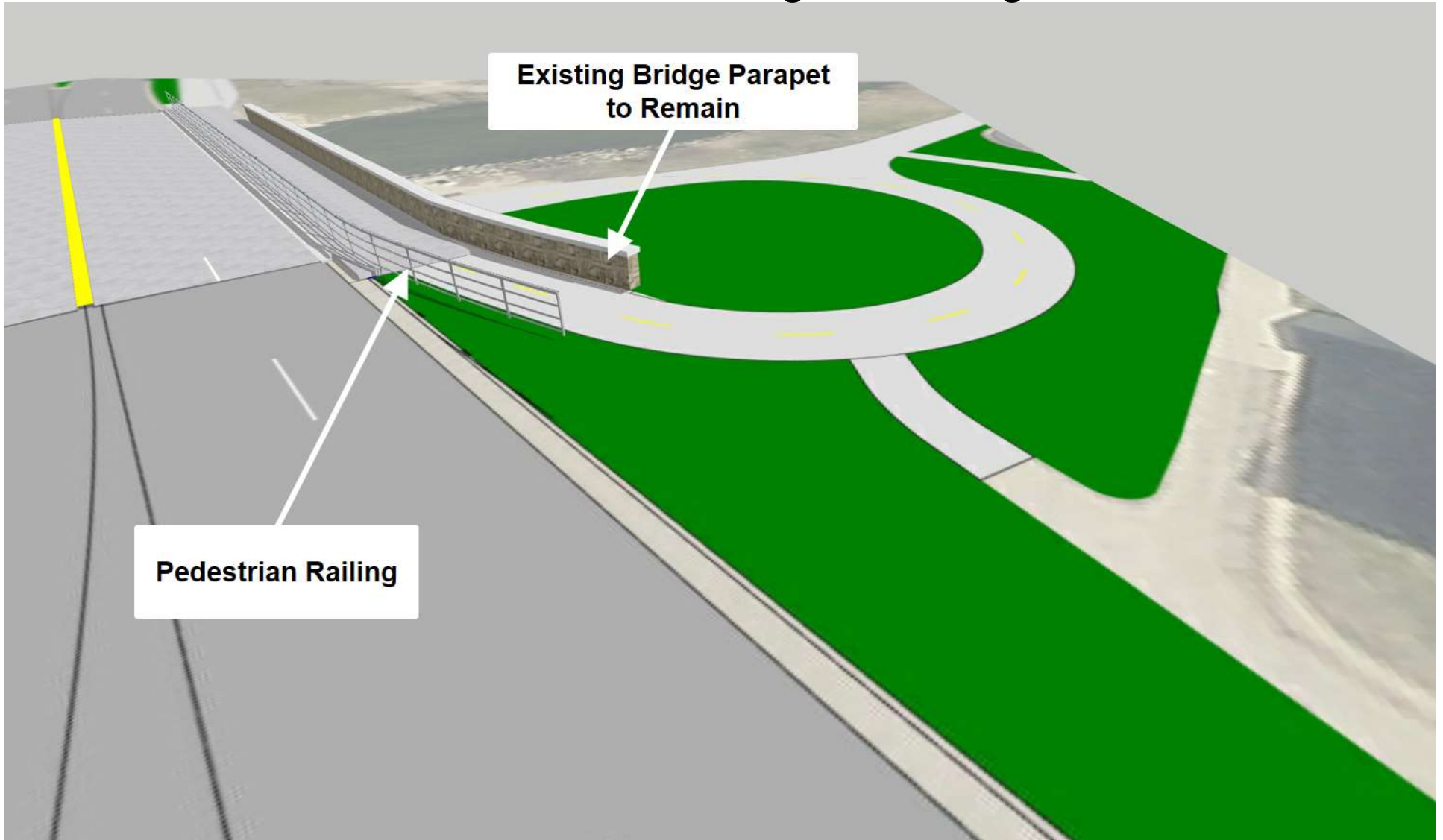
Railing to separate multi-use path from travel lanes.

Existing Bridge Parapets (Typ.)

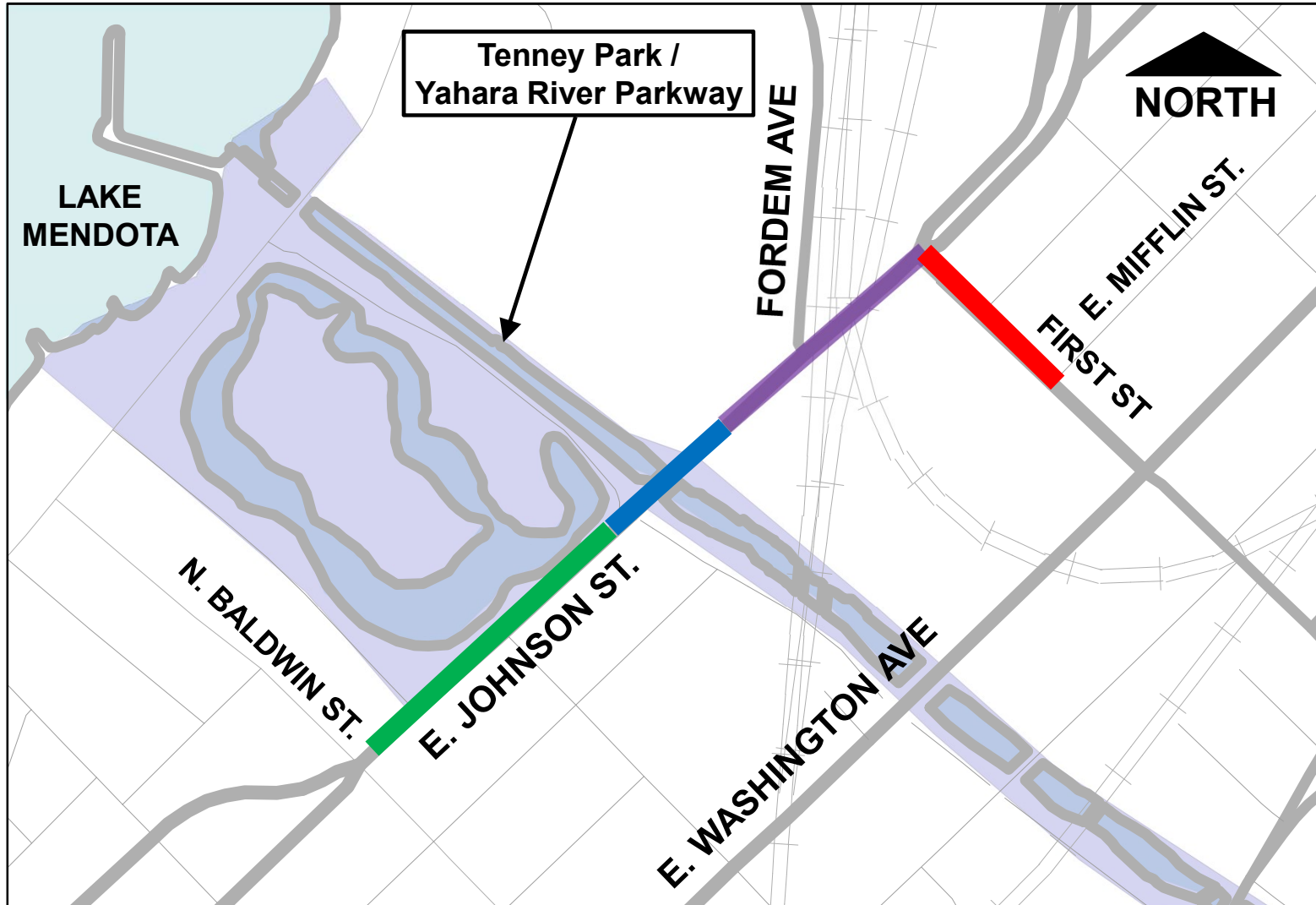
New or re-aligned Multi-use path



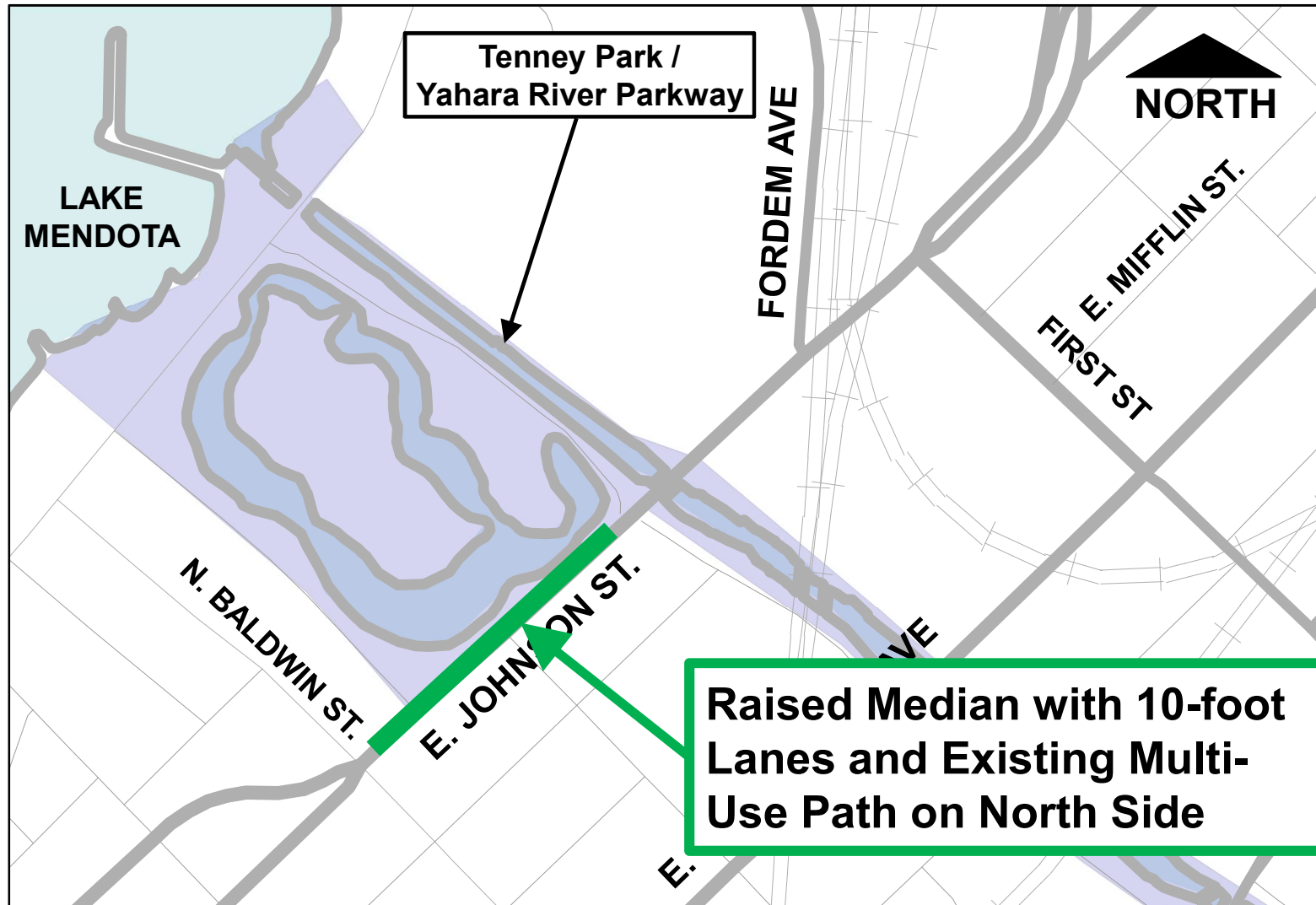
Yahara River Bridge Crossing



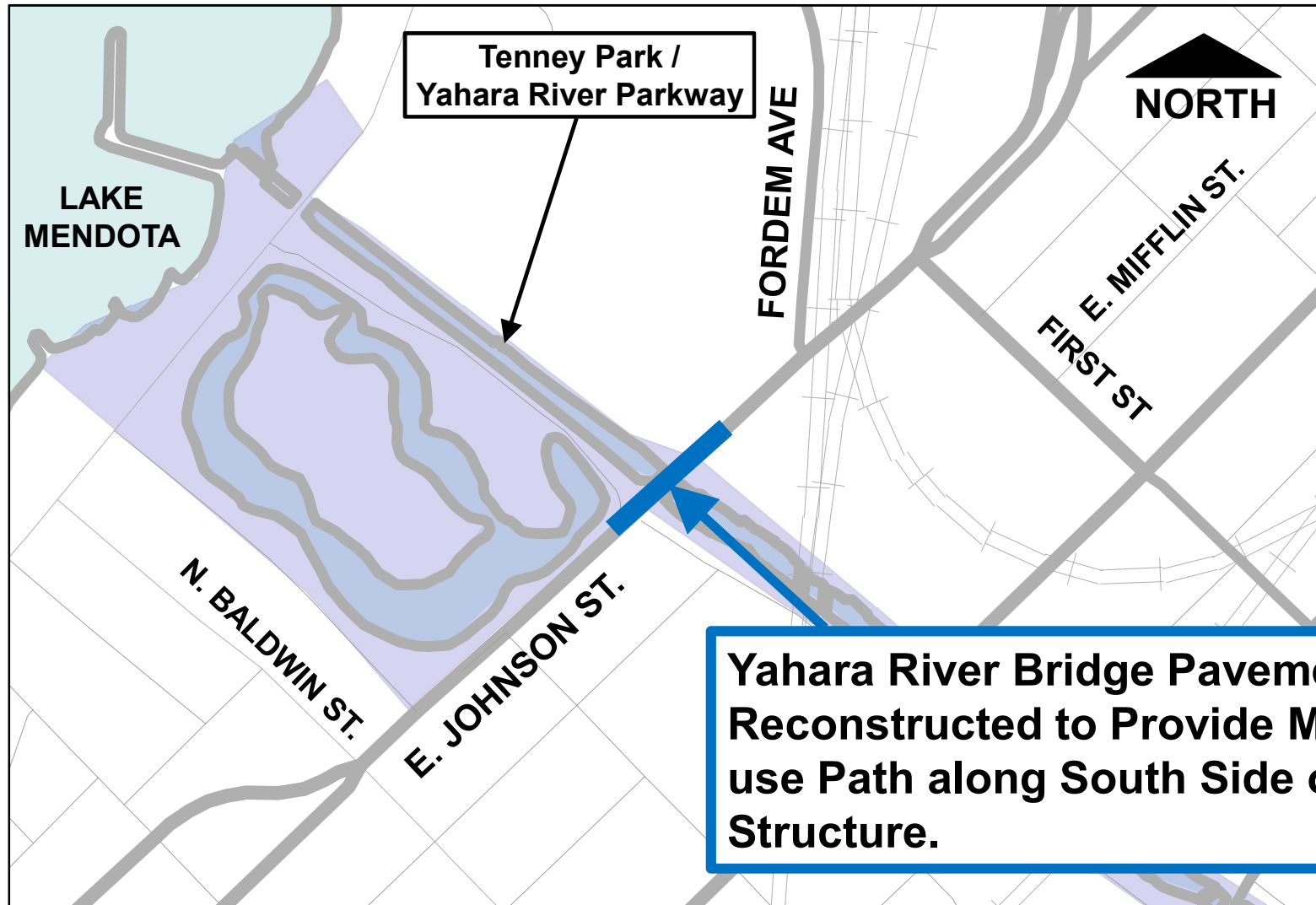
Typical Roadway Cross Sections



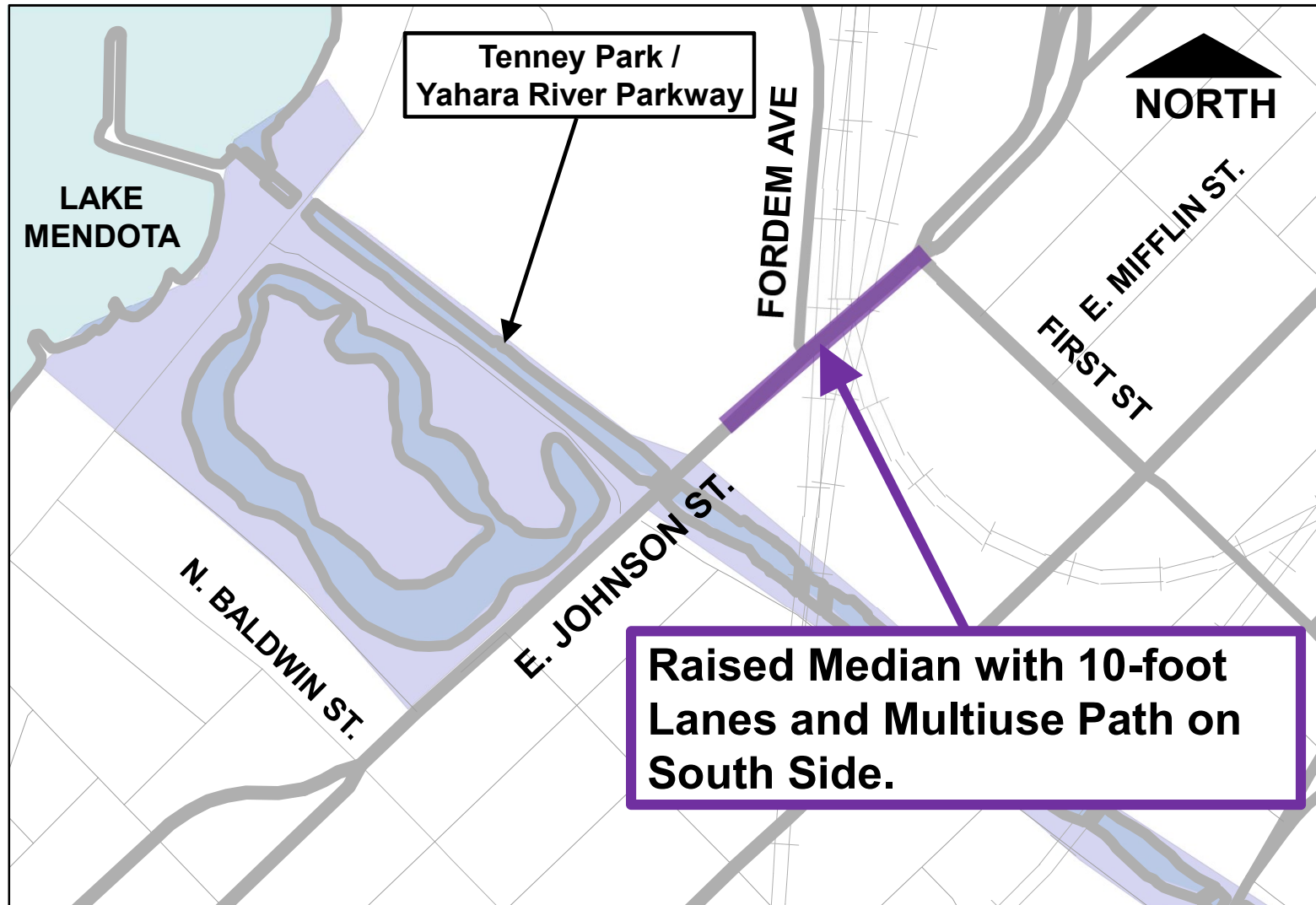
Typical Roadway Cross Sections



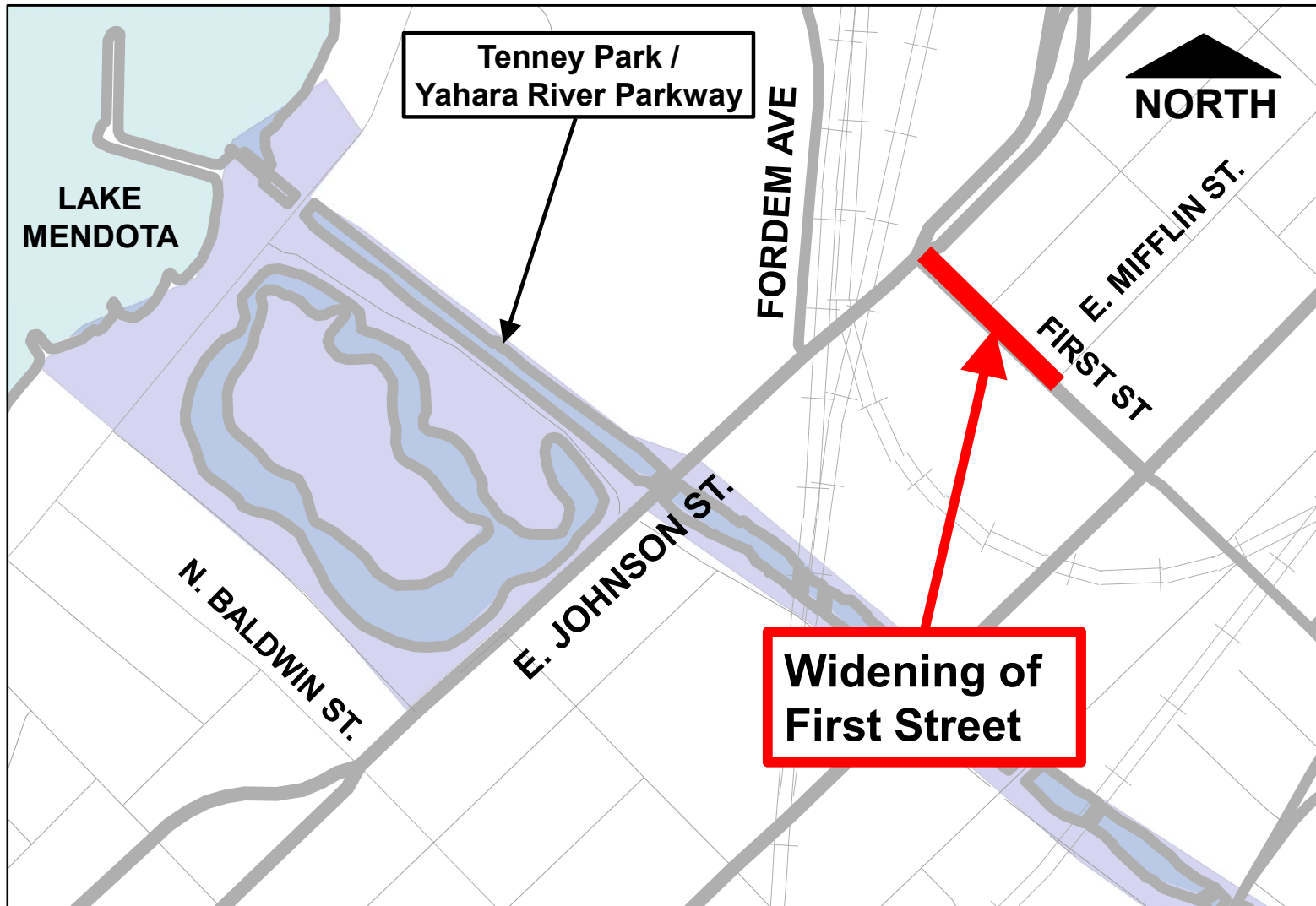
Typical Roadway Cross Sections



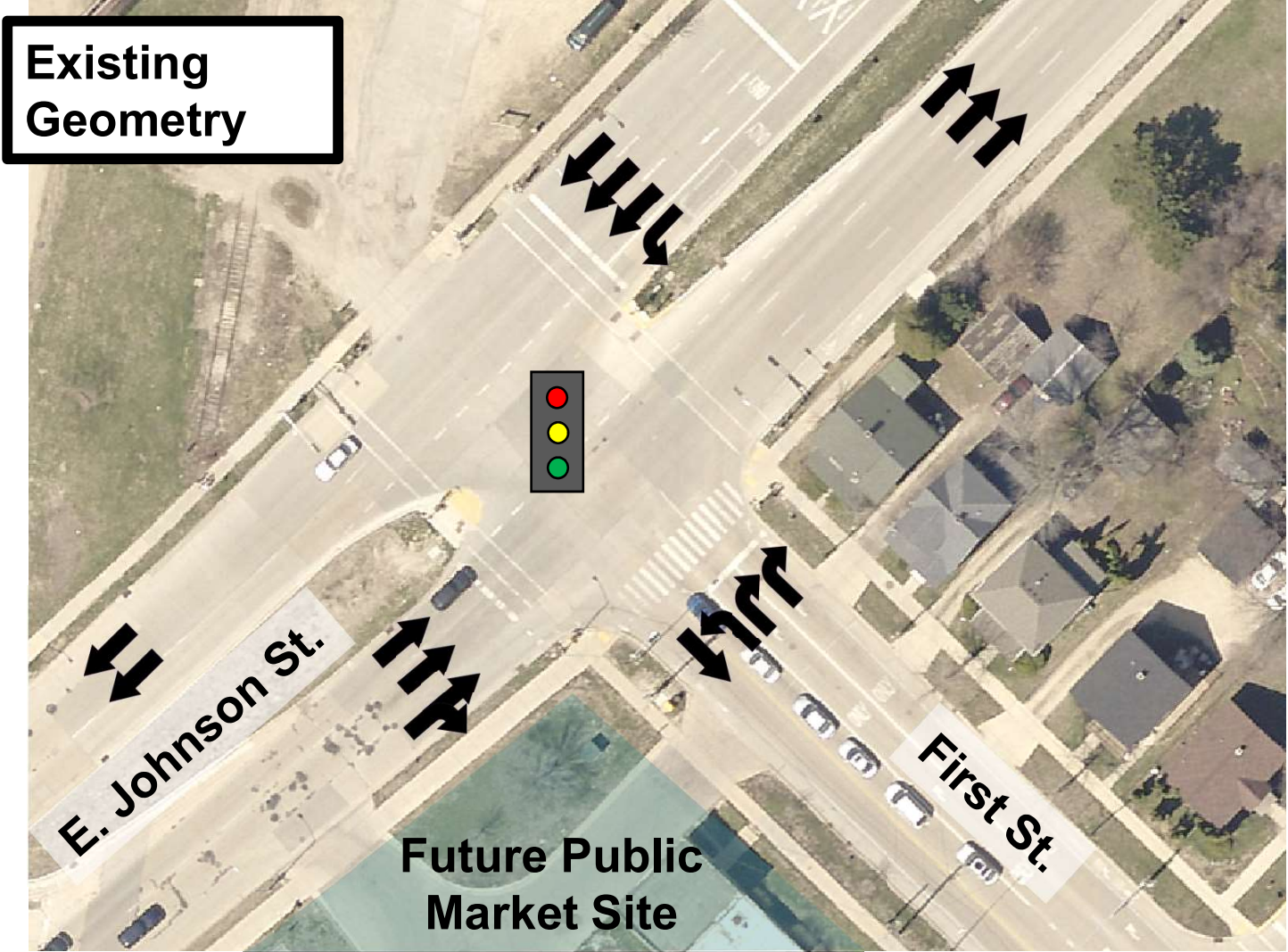
Typical Roadway Cross Sections



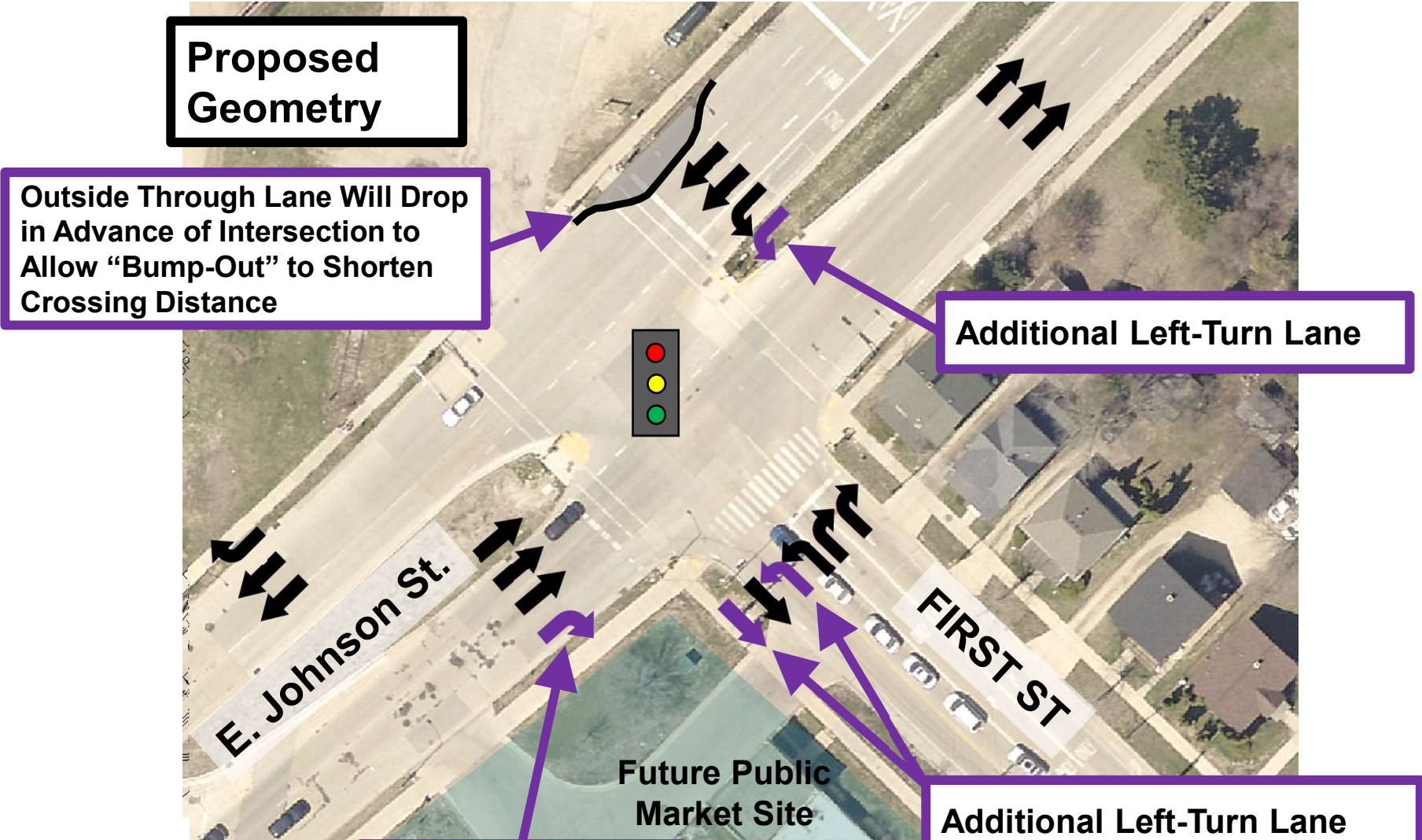
Typical Roadway Cross Sections



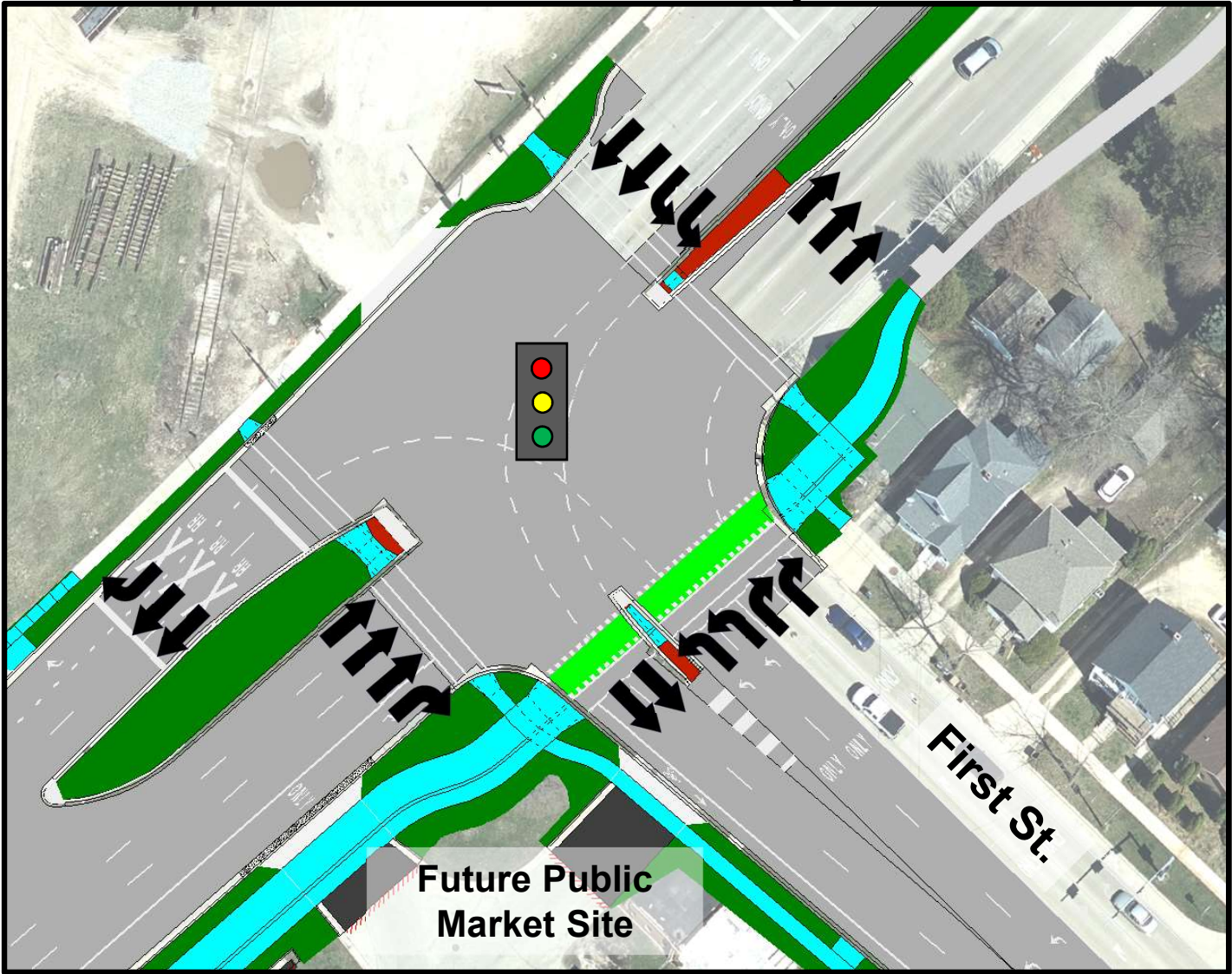
Overview of First Street Improvements



Overview of First Street Improvements

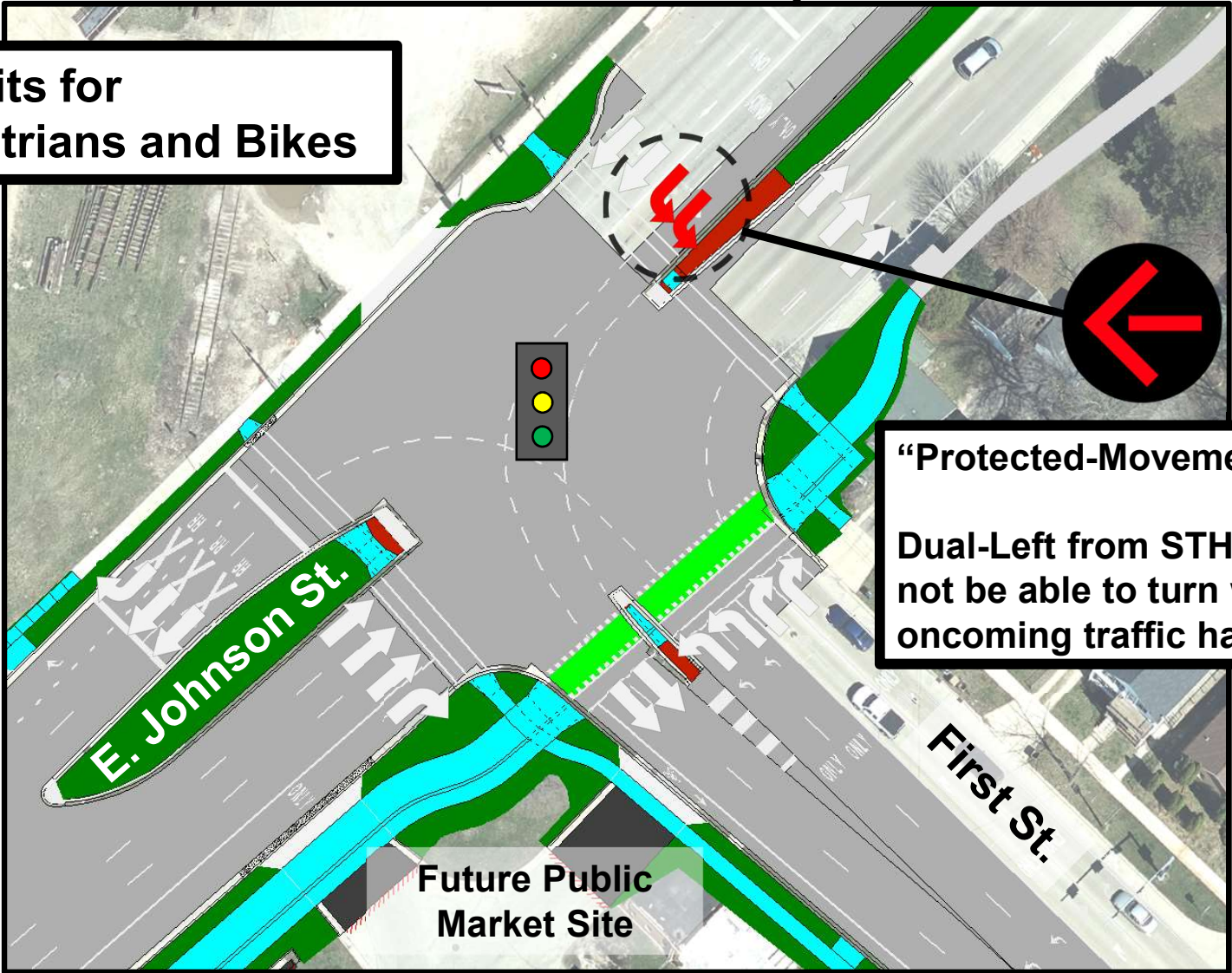


Overview of First Street Improvements



Overview of First Street Improvements

**Benefits for
Pedestrians and Bikes**



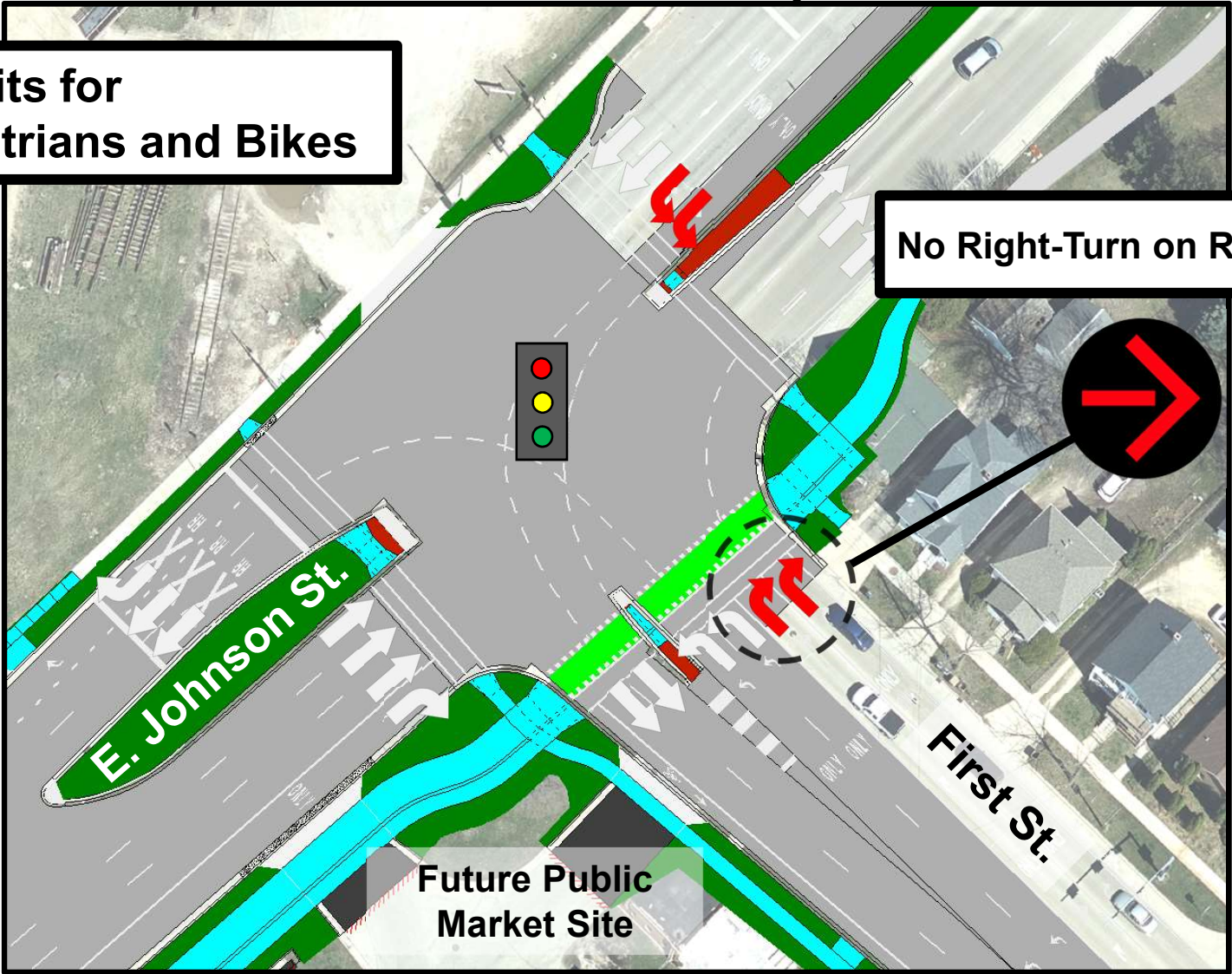
“Protected-Movement”
Dual-Left from STH 113 will not be able to turn when oncoming traffic has green.



Overview of First Street Improvements

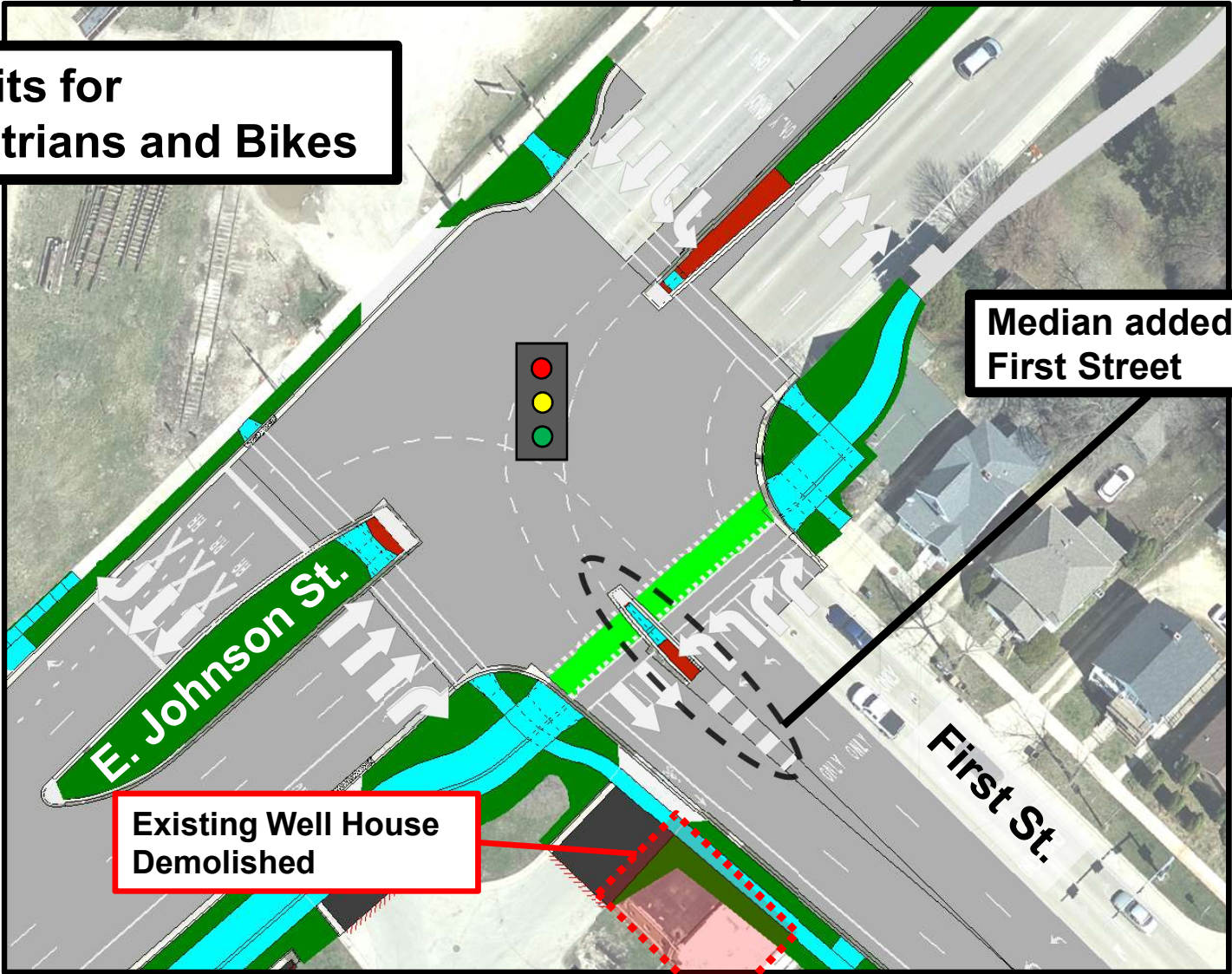
Benefits for Pedestrians and Bikes

No Right-Turn on Red.



Overview of First Street Improvements

**Benefits for
Pedestrians and Bikes**



**Median added on
First Street**

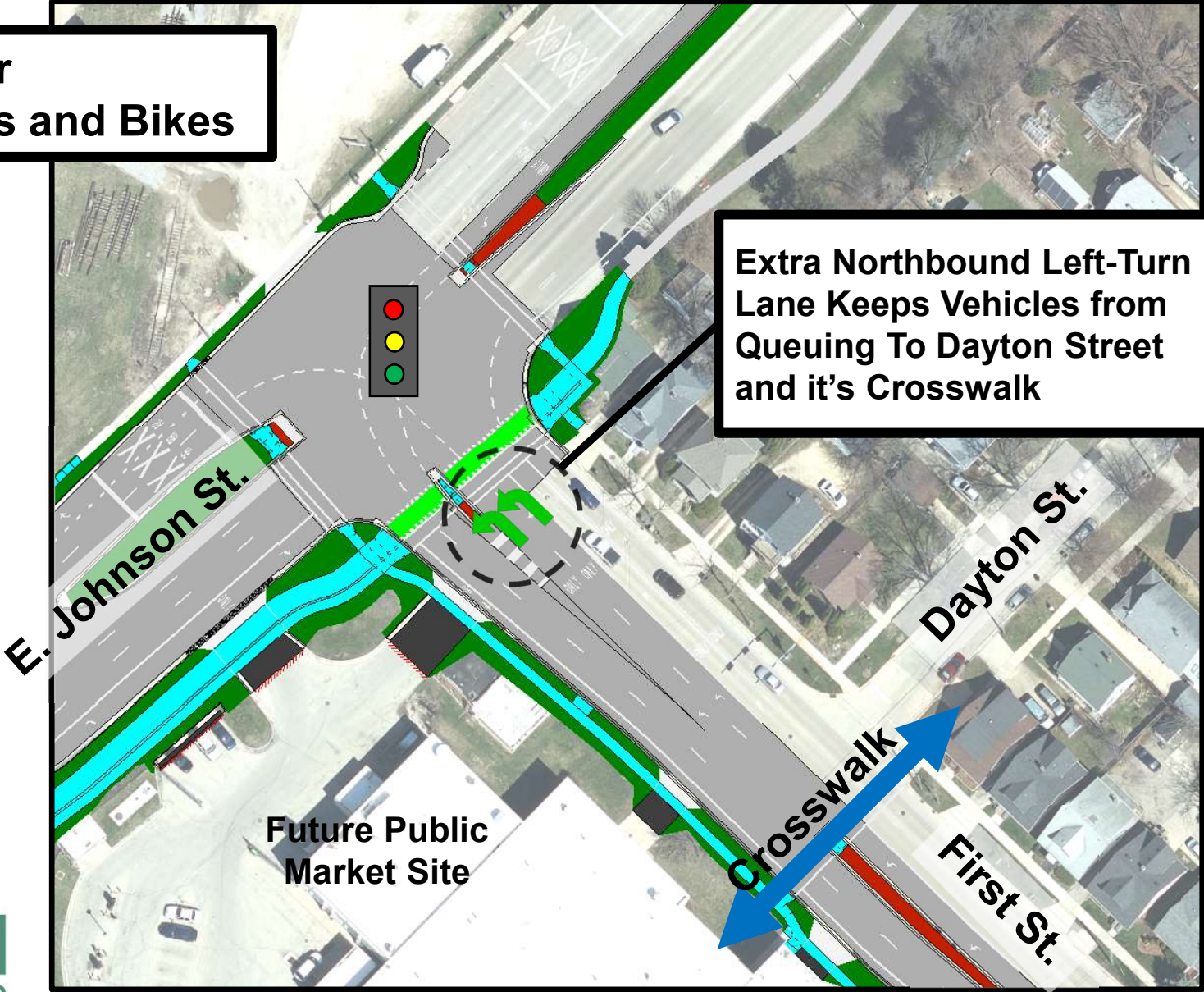
**Existing Well House
Demolished**



Overview of First Street Improvements

Benefits for Pedestrians and Bikes

Extra Northbound Left-Turn Lane Keeps Vehicles from Queuing To Dayton Street and it's Crosswalk



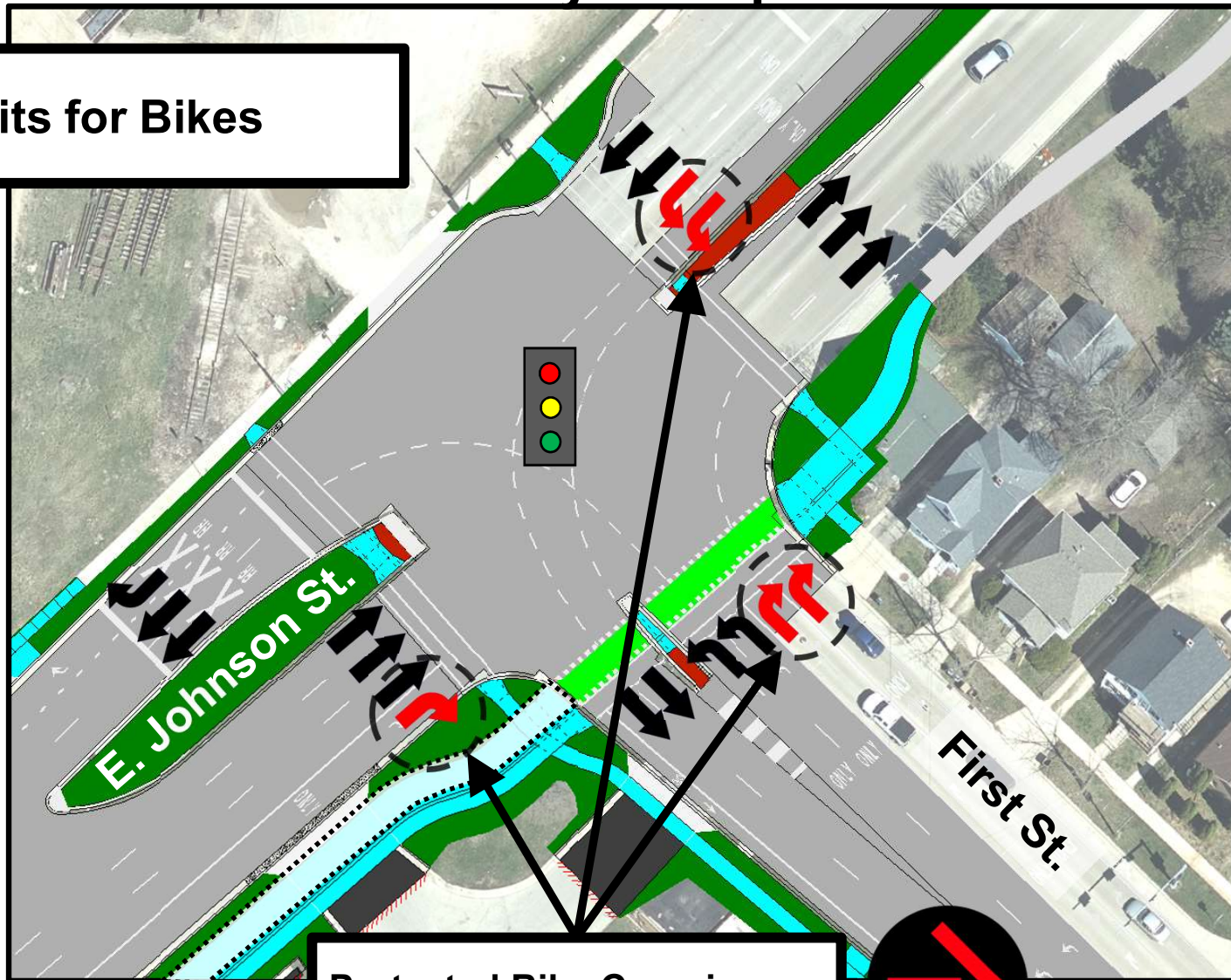
Overview of Bicycle Improvements

Benefits for Bikes

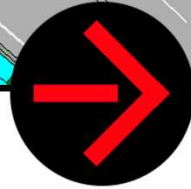


Overview of Bicycle Improvements

Benefits for Bikes



Protected Bike Crossing

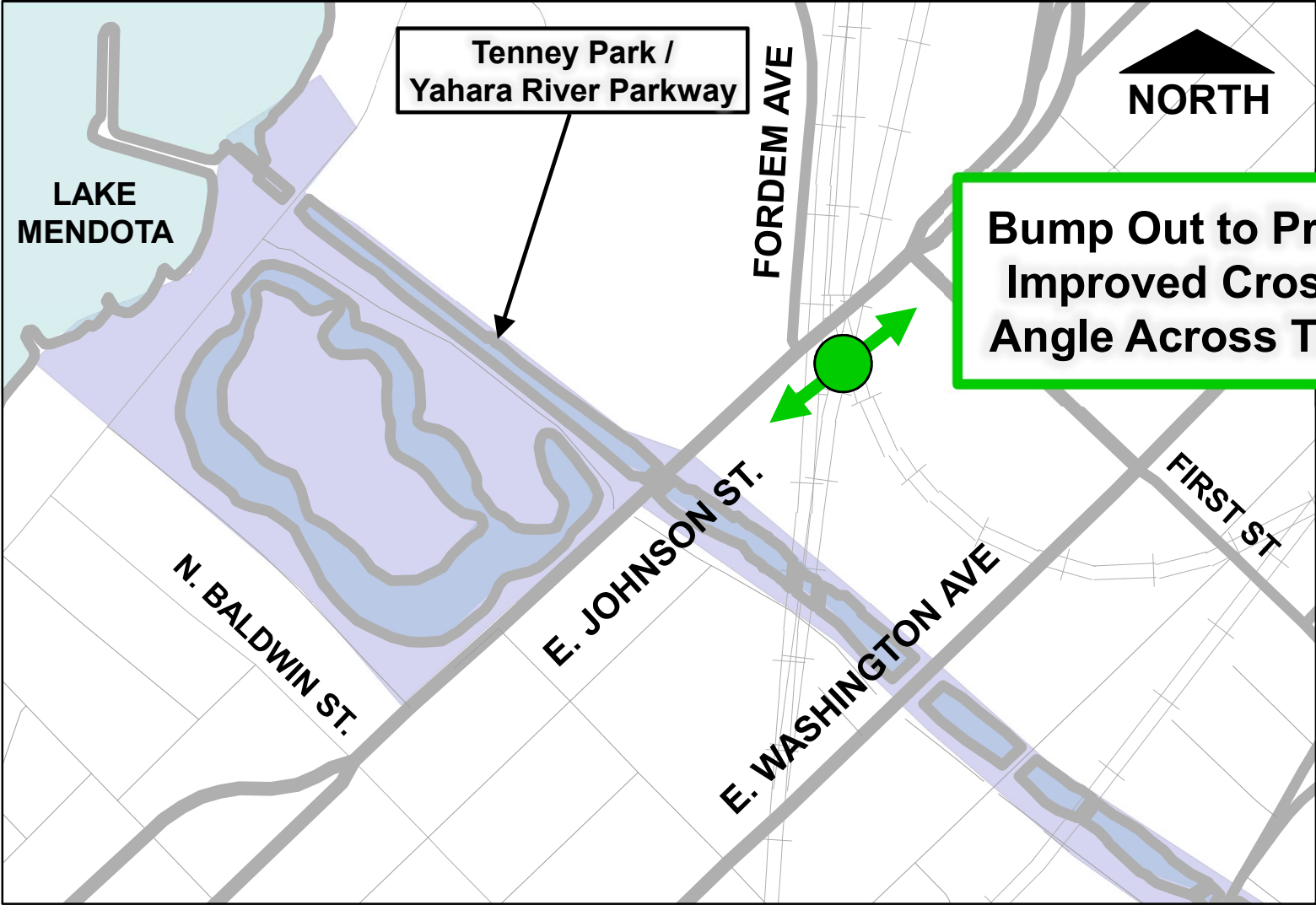


Crossing Improvements

- ADA Compliant curb ramps will be provided.
- Crosswalks will be marked.
- Similar colored crosswalk markings maintained at Marston Avenue (shown in picture) and added at First Street.



Railroad Crossing Improvements

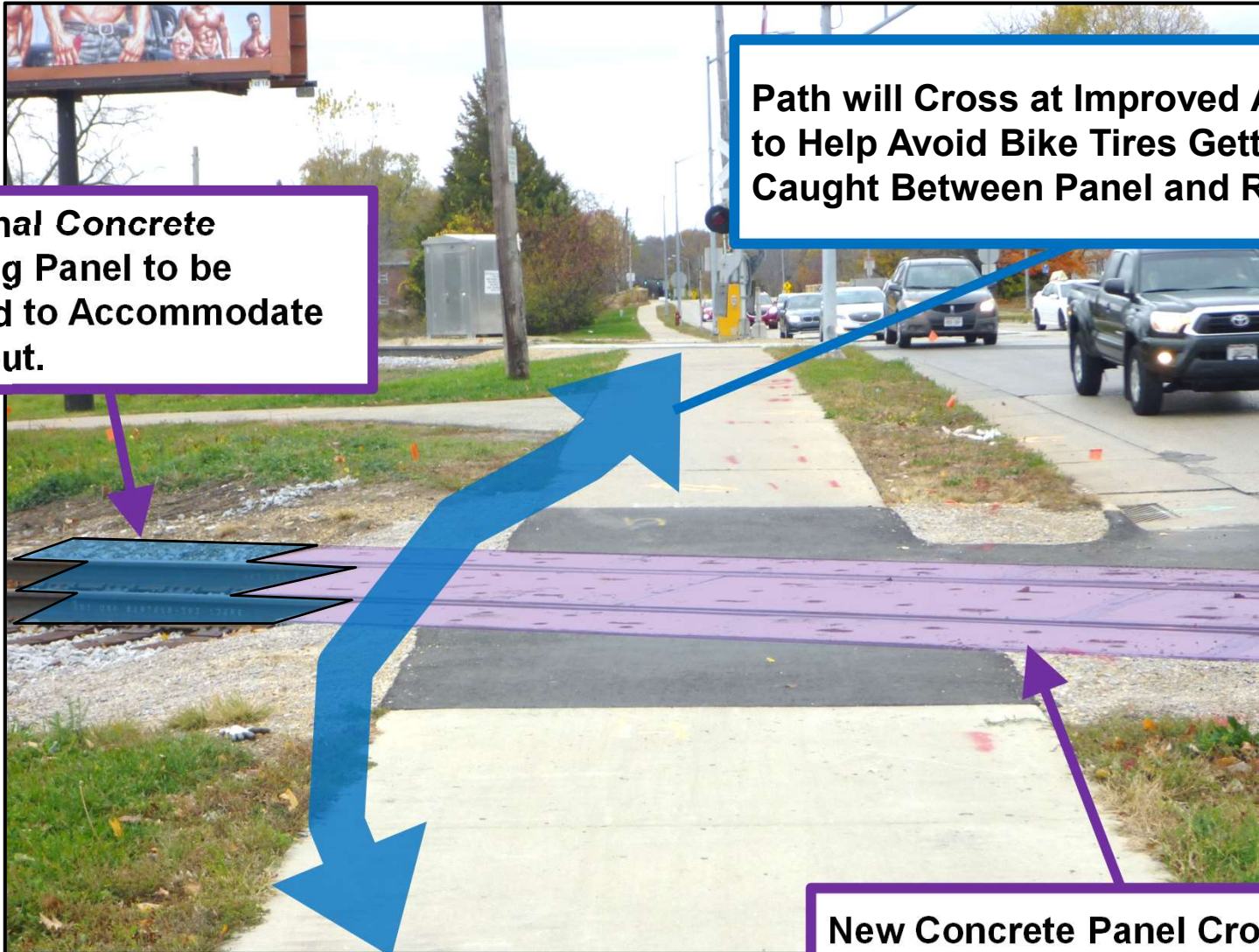


Railroad Crossing Improvements

- Reconstructed roadway will match the new crossing surface installed in 2015.
- Improvements will be made to the angle of crossing for multi-use path.



Railroad Crossing Improvements (Multi-Use Path)



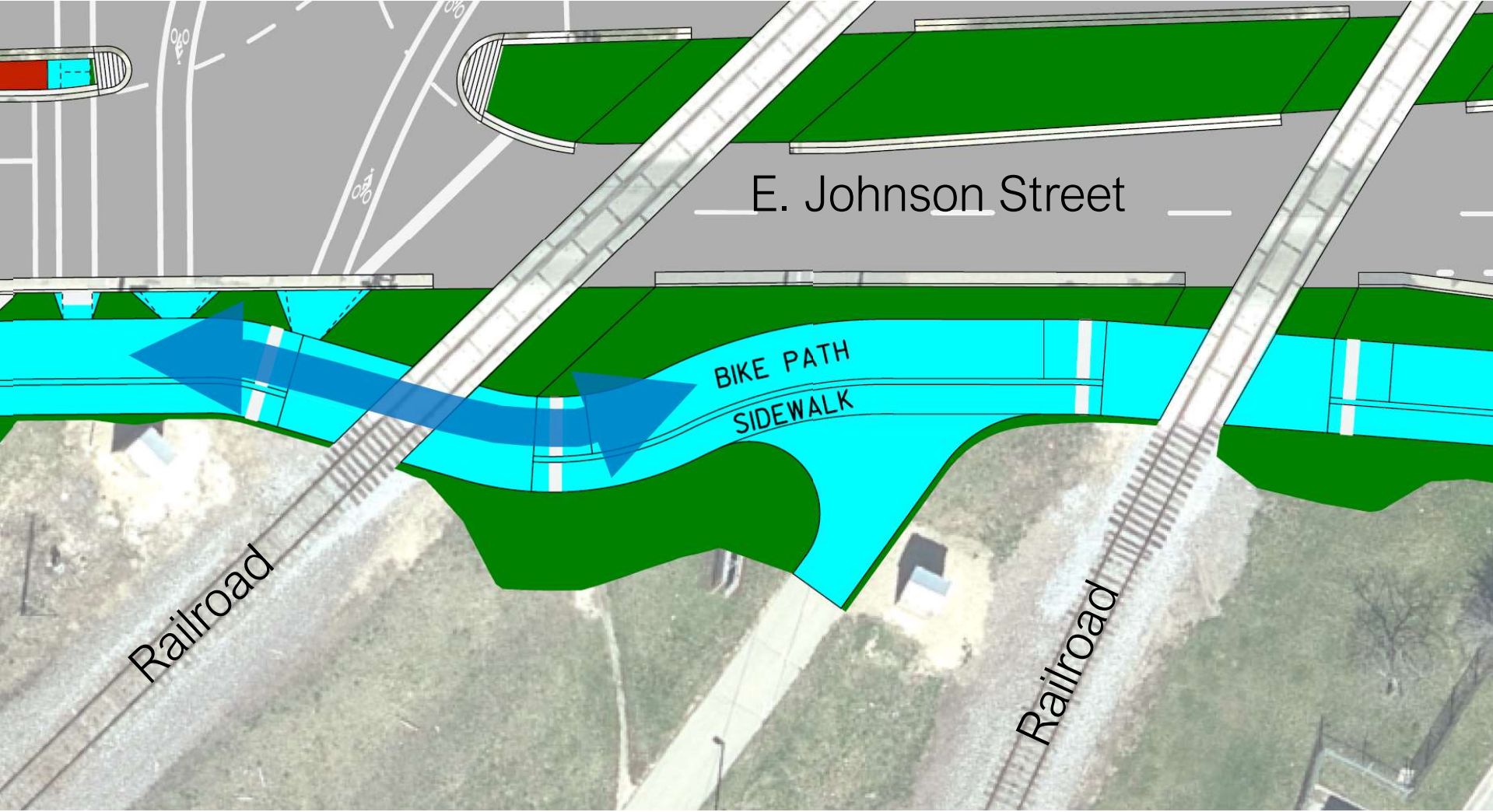
Path will Cross at Improved Angle to Help Avoid Bike Tires Getting Caught Between Panel and Rail.

Additional Concrete Crossing Panel to be Installed to Accommodate Bump out.

New Concrete Panel Crossing Installed in 2015 (To Remain)



Railroad Crossing Improvements



2018 Flooding Design Considerations



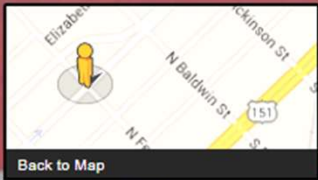
Design revised in late 2018 to raise E. Johnson Street about a foot in this area to help avoid similar situation in future.



Lighting



New "Standard" Light Pole

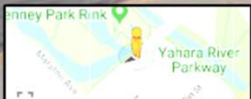
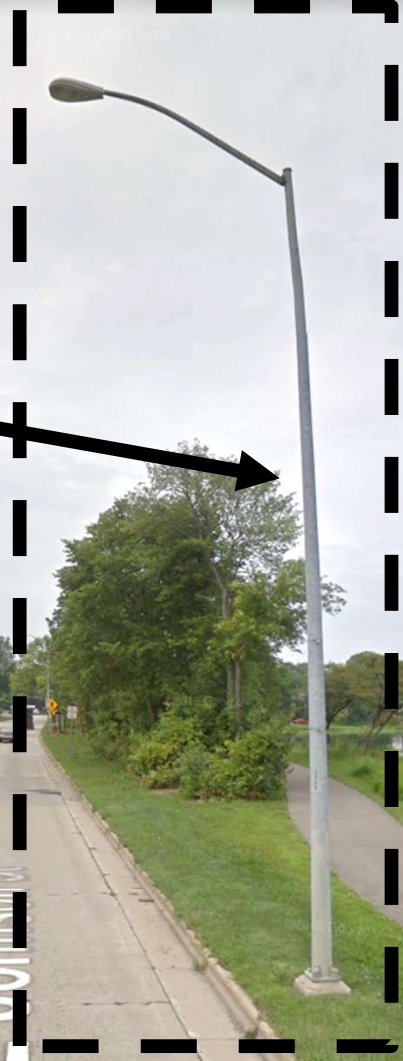


Back to Map

Google

Lighting

Existing Light Poles West of River to Remain Where Possible

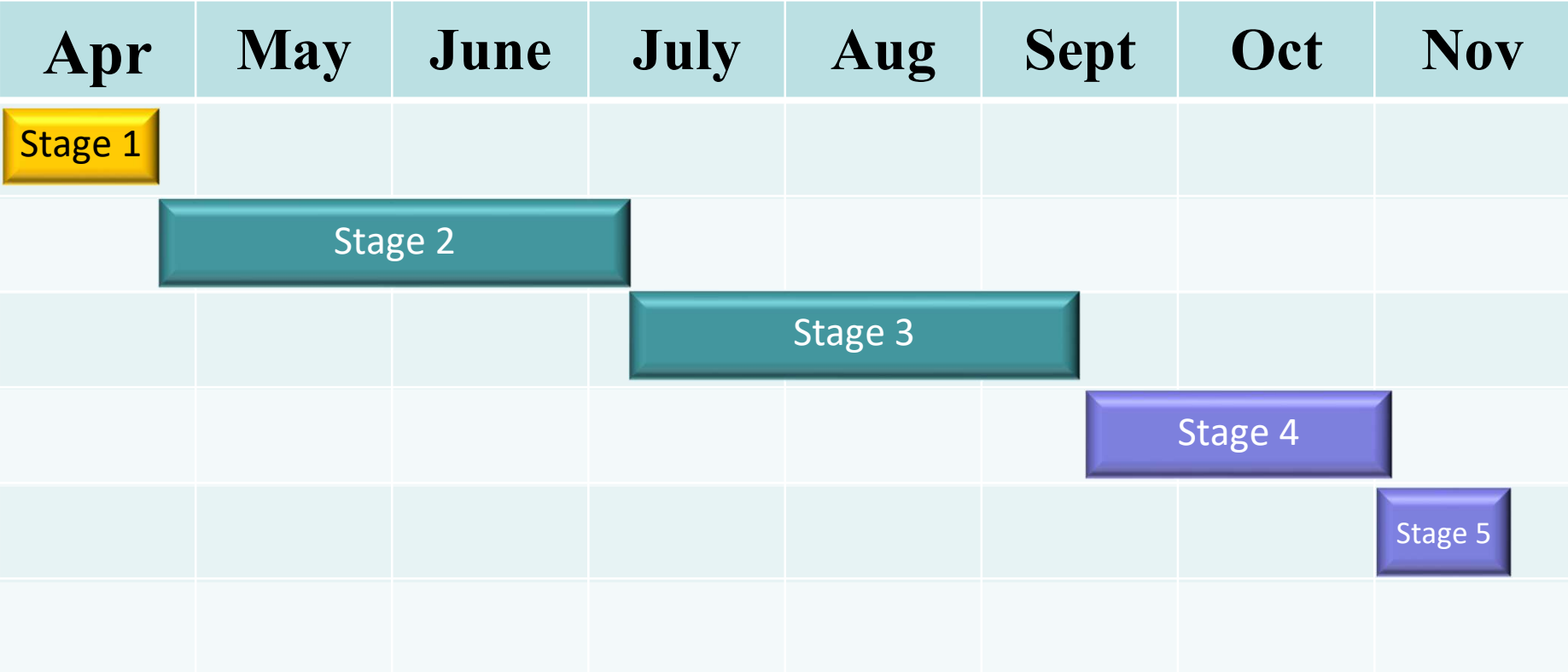


Staging of Traffic During Construction

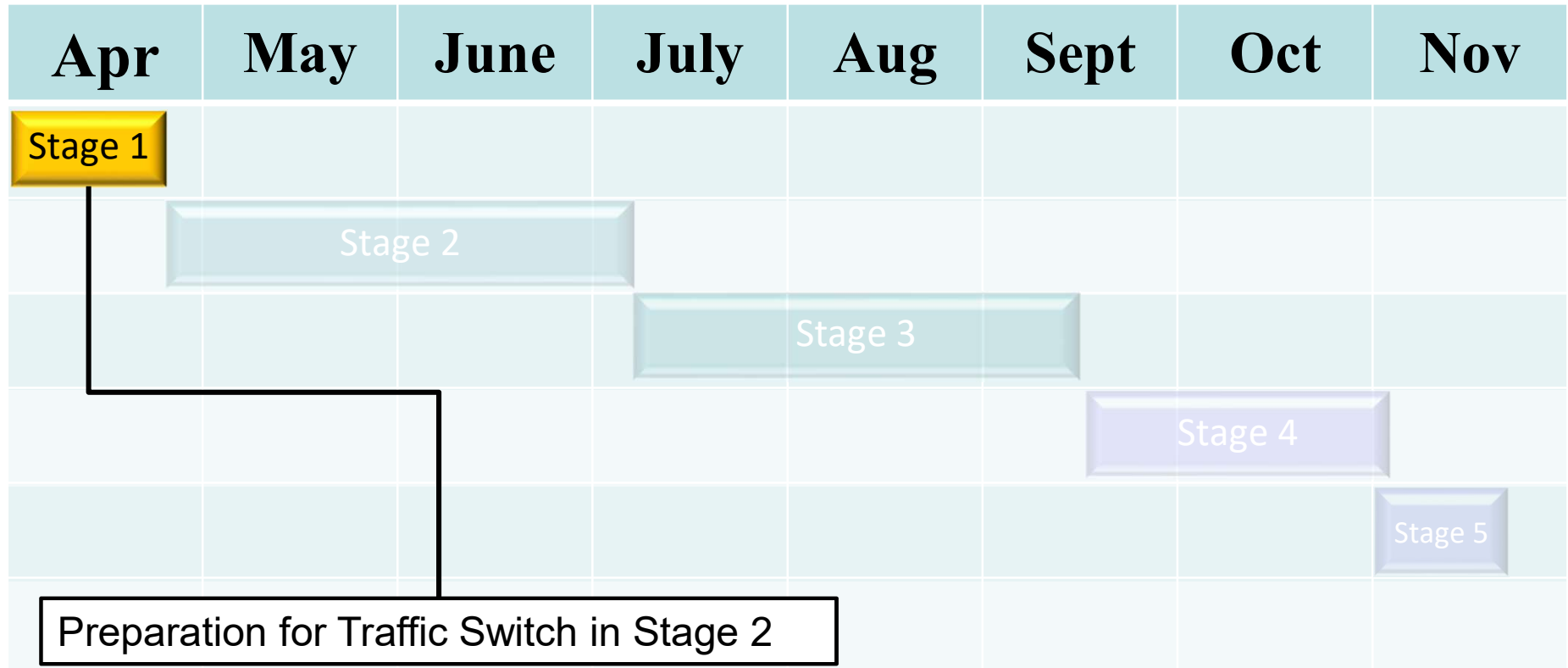
- E. Johnson Street will remain open to traffic during construction:
 - One travel lane in each direction
 - Left-turn lanes at intersections (where space allows)
 - Sidewalk on one side of the roadway open at any given time
 - Short-Term Closures for Certain Construction Activities
- ***Construction – April through November 2019***



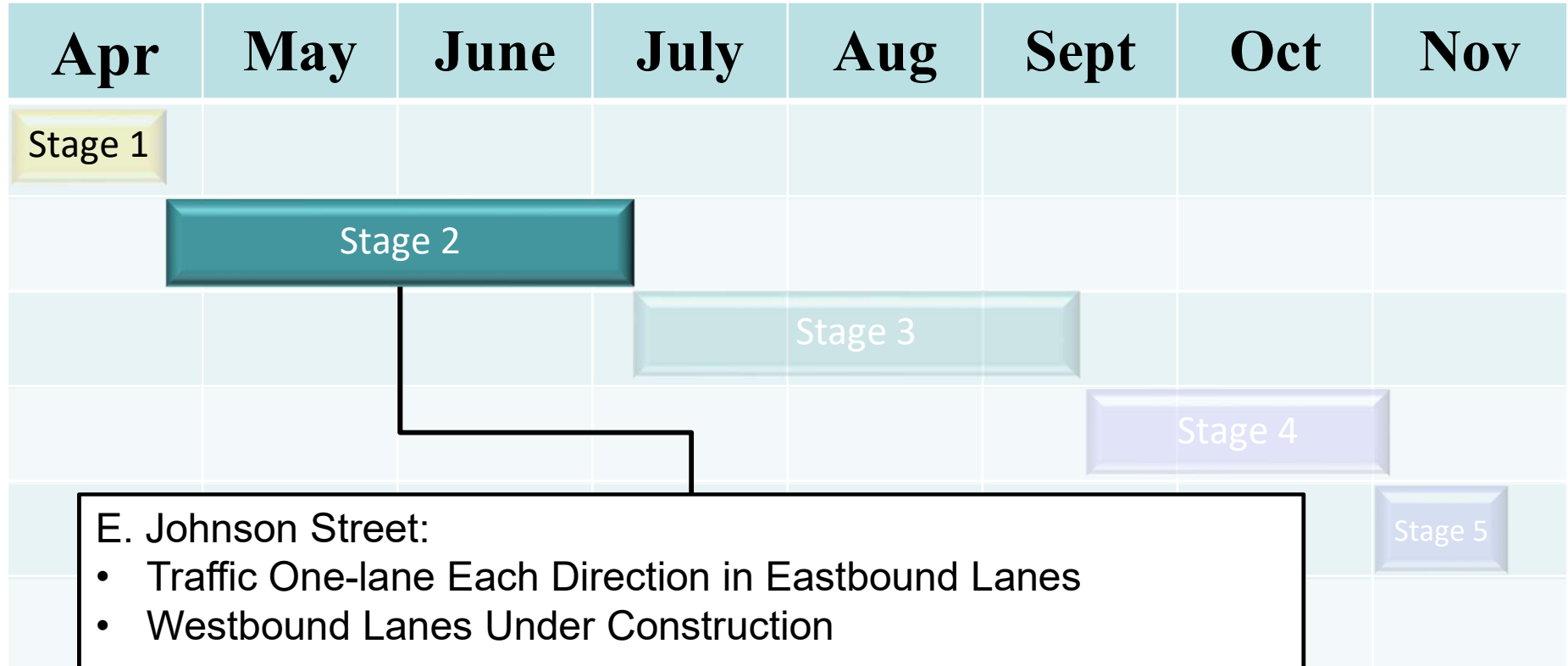
Staging of Traffic During Construction



Stage 1



Stage 2



E. Johnson Street:

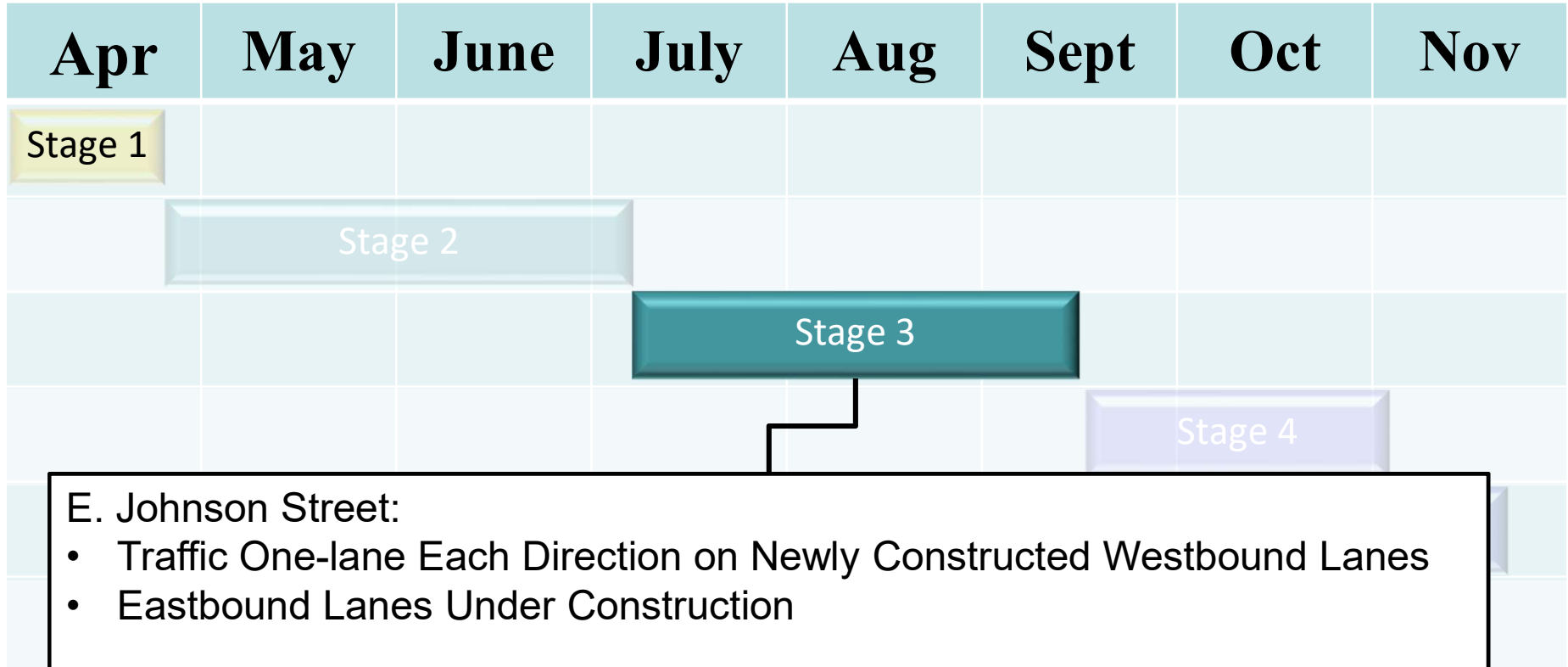
- Traffic One-lane Each Direction in Eastbound Lanes
- Westbound Lanes Under Construction

First Street:

- Traffic One-lane Each Direction on Existing Northbound Lanes
- Southbound Lanes/Widening Under Construction



Stage 3



E. Johnson Street:

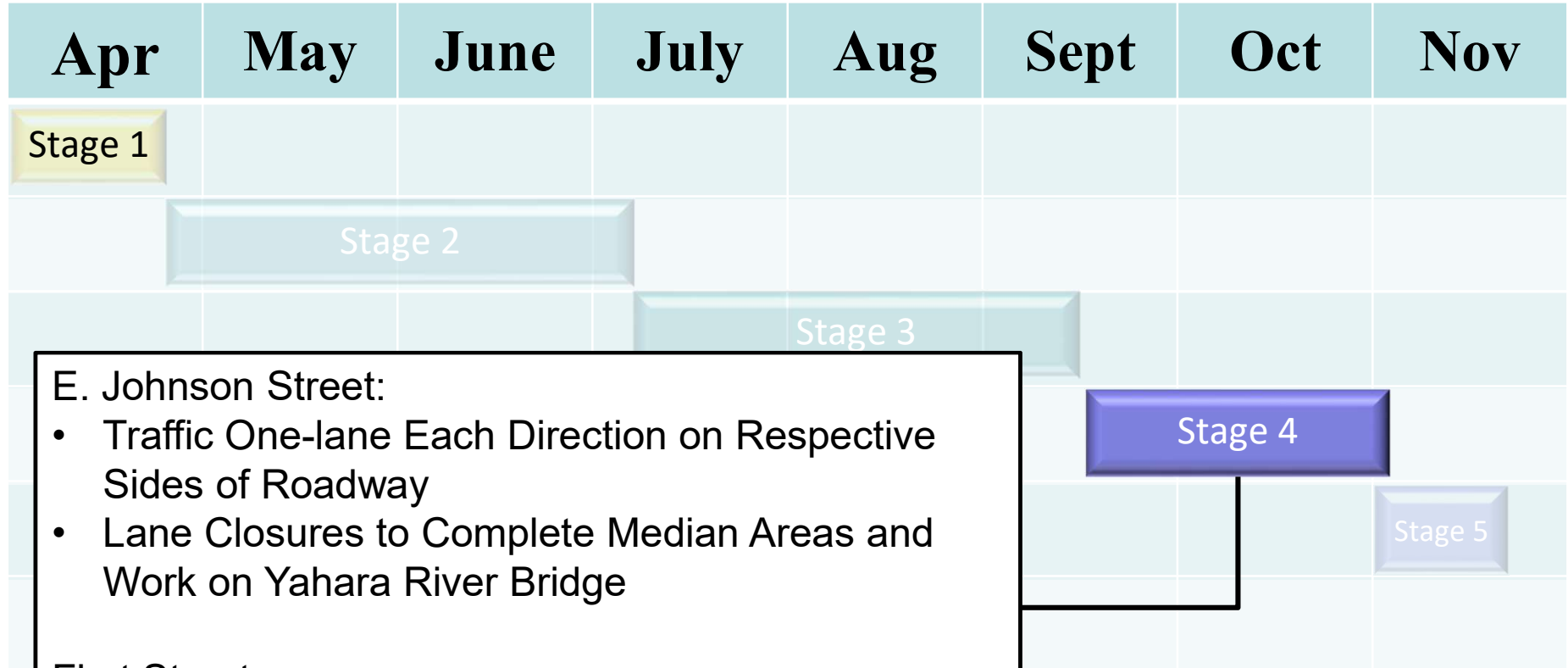
- Traffic One-lane Each Direction on Newly Constructed Westbound Lanes
- Eastbound Lanes Under Construction

First Street:

- Traffic One-lane Each Direction on Existing Northbound Lanes and Newly Constructed Southbound Lanes
- Median Lanes Under Construction



Stage 4



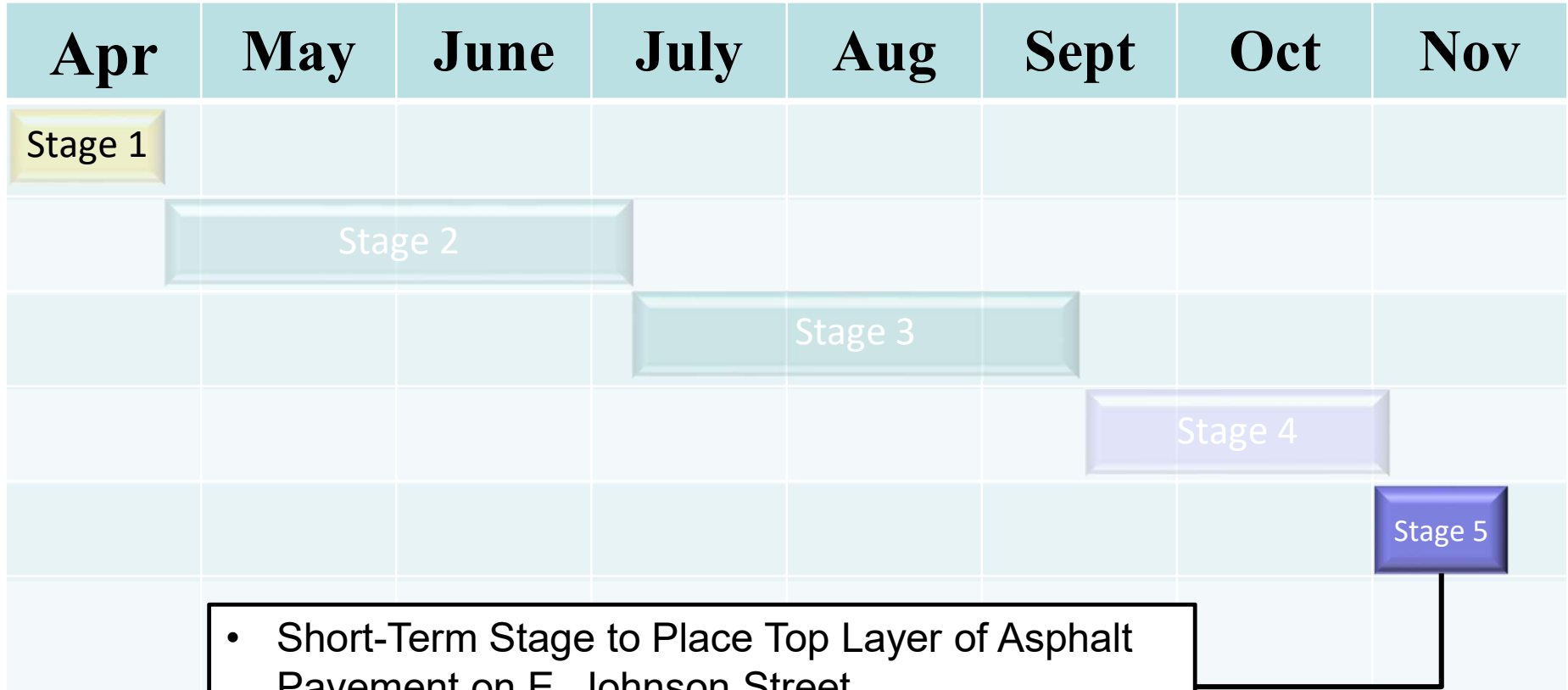
E. Johnson Street:

- Traffic One-lane Each Direction on Respective Sides of Roadway
- Lane Closures to Complete Median Areas and Work on Yahara River Bridge

First Street:

- Traffic Two-lanes Northbound and One-lane Southbound on Respective Sides of Roadway
- Inside Lane Closures to Complete Median Areas

Stage 5



- Short-Term Stage to Place Top Layer of Asphalt Pavement on E. Johnson Street.
- Involves One-way Closures and Detours

Questions

- Project Website
 - Project Contact Info.
 - PDF of this Presentation
 - PDF of Plans
 - Sign-Up for Project Updates

The screenshot shows the City of Madison Engineering website. The header includes the City of Madison logo and navigation links: Accounts, Services, Jobs, Agencies, Data, Contact, and a search bar. The main navigation bar lists: Home, Bike, Road Construction, City Facilities, Sewer/Storm, and Resources. The breadcrumb trail reads: City of Madison > Engineering > Projects > Johnson St, East. The page title is "Johnson St, East". A map shows the project location in Madison, WI, near the Monona and Kegonsa lakes. The "Project Details" section lists: Project Type: Road Construction, Location: 1400 E. Johnson St, Madison, WI, Area: East, Estimated Schedule: 03/15/2019 to 10/31/2019, and Project Status: In Design. The "Project Contact" section lists Chris Petykowski, (608) 267-8678, and cpetykowski@cityofmadison.com. There is an "Active Project List" dropdown and a "Subscribe to Email List" section with an email input field.

<http://www.cityofmadison.com/engineering/projects/johnson-st-east>





STRAND
ASSOCIATES®

Excellence in Engineering Since 1946