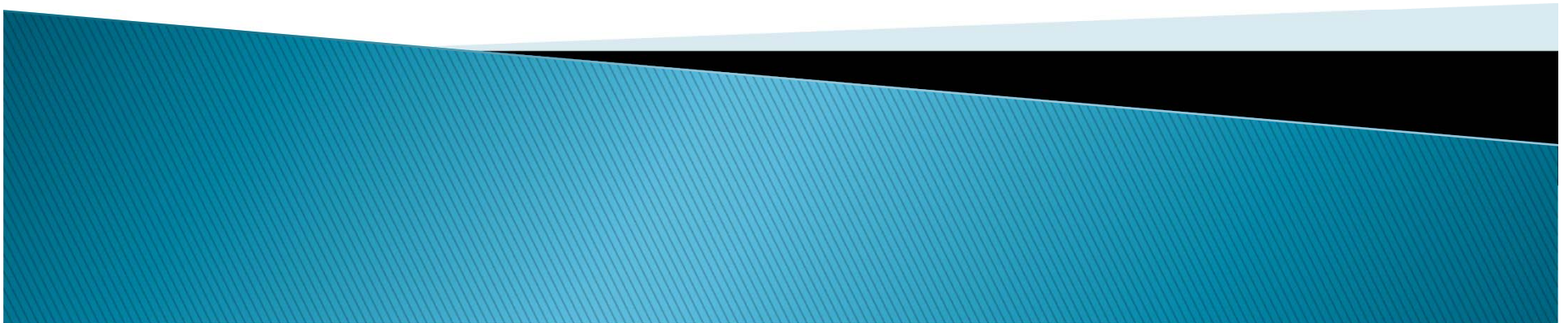
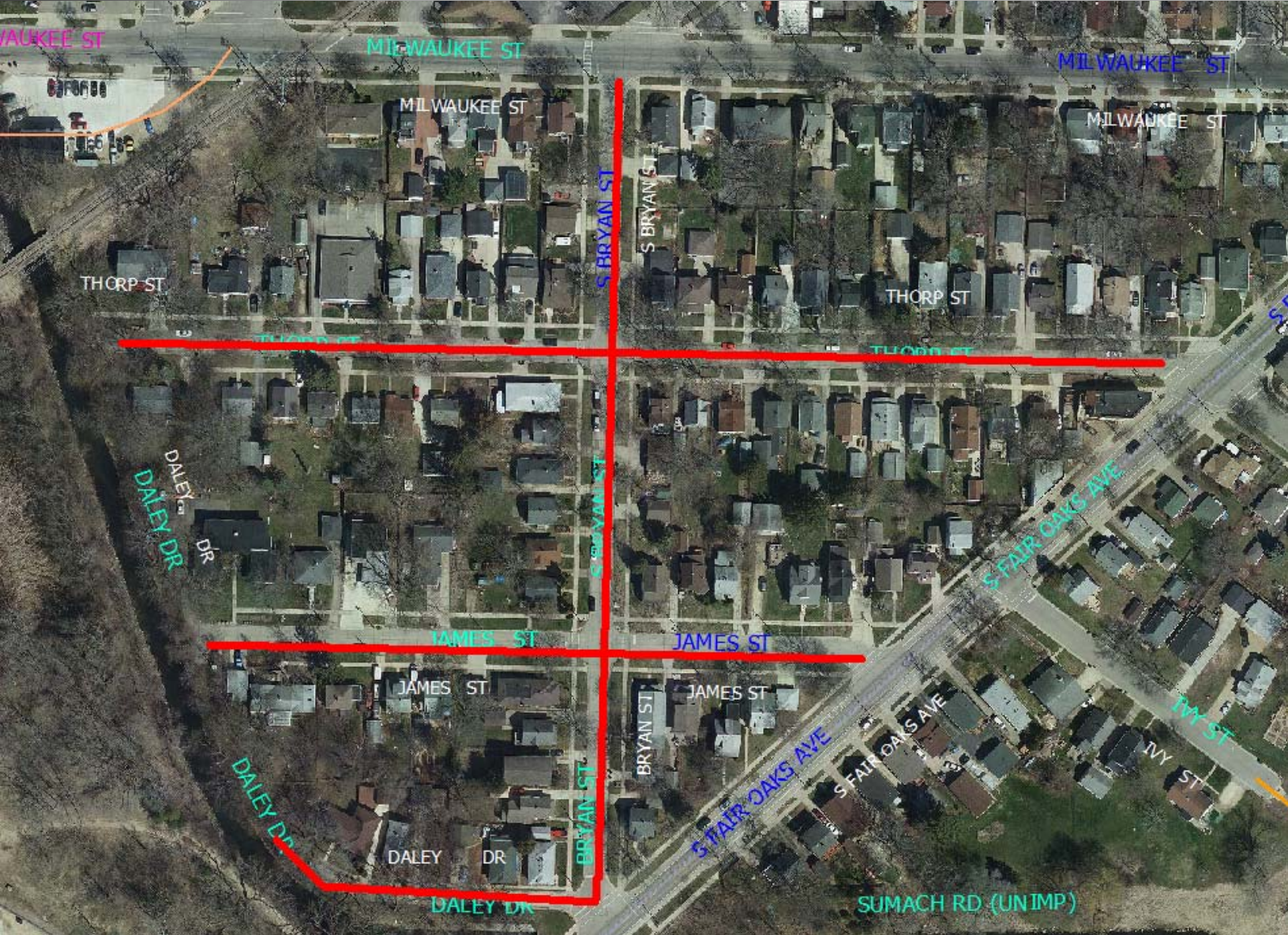


S. Bryan Street, Daley Drive, James Street and Thorp Street

Public Information Meeting
February 15, 2018



Location



Preview of presentation

- ▶ Existing Conditions
- ▶ Scope of project
- ▶ Proposed design
- ▶ Forestry info
- ▶ Assessment policy
- ▶ Next steps/Schedule
- ▶ What to expect during construction
- ▶ Q&A, discussion

Existing Conditions - S. Bryan Street

Item	Existing Condition
Last Surfaced	1977
Pavement Rating	4
Curb Rating	2
Width	24 ft
Surface	Asphalt over concrete
Sanitary	8" VP 1926
Storm	12-VP 1924
Water	6" Cast Iron, 1924

Existing Conditions - Daley Drive

Item	Existing Condition
Last Surfaced	1930
Pavement Rating	4
Curb Rating	4
Width	14-15 ft
Surface	Asphalt + Concrete
Sanitary	8" VP 1960
Storm	12-VP 1929
Water	6" Cast Iron, 1928

Existing Conditions—James Street

Item	Existing Condition
Last Surfaced	1976
Pavement Rating	4
Curb Rating	4
Width	24 ft
Surface	Asphalt over concrete
Sanitary	6" VP 1960
Storm	12-VP 1927
Water	6" Cast Iron, 1927

Existing Conditions - Thorp Street

Item	Existing Condition
Last Surfaced	1976
Pavement Rating	4
Curb Rating	4-5
Width	24 ft
Surface	Asphalt over concrete
Sanitary	6" VP 1960, 6" VP 1926
Storm	12-VP 1927
Water	6" Cast Iron, 1924, 1927

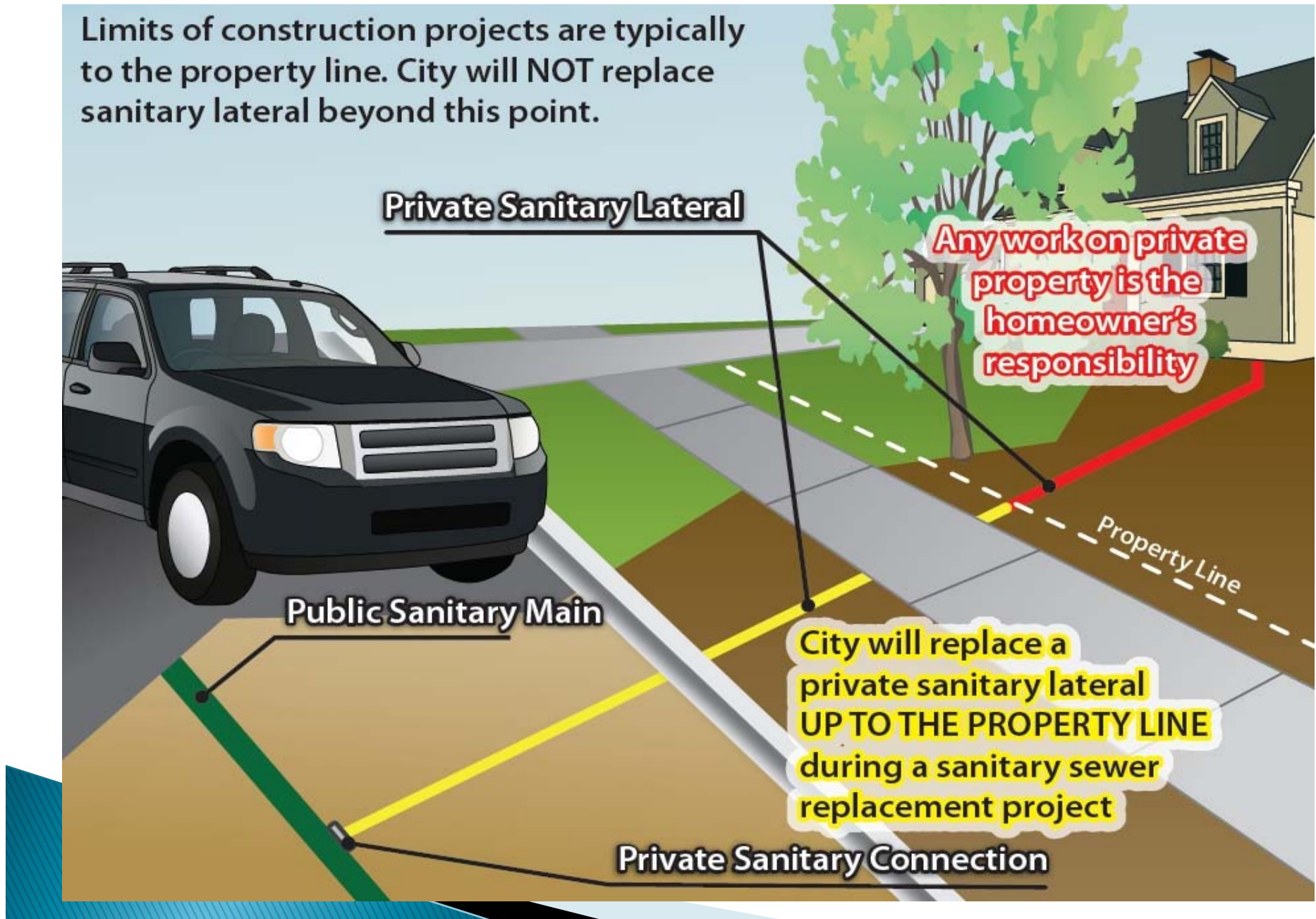


Scope – City Utility Work

- ▶ Replace water mains and services
- ▶ Replace sanitary sewer, sanitary force main, and laterals
- ▶ Replace storm sewer

Utility Details – Sewer Lateral

Limits of construction projects are typically to the property line. City will NOT replace sanitary lateral beyond this point.



Forestry

- ▶ Estimated tree removals in project limits – 12 trees + 5 box elder clumps. Mostly condition-related (5 of them are preemptive ash removals).
- ▶ Ash tree planned for removal on this project would be removed regardless of project, City's Emerald Ash Borer response plan.
- ▶ Some illegal plantings, remove as needed.
- ▶ Please contact Marla Eddy from forestry directly w/ ?s
- ▶ When project is complete, Forestry will evaluate terraces for potential tree planting spots. (New trees typically planted the next spring.)

Scope – Street work

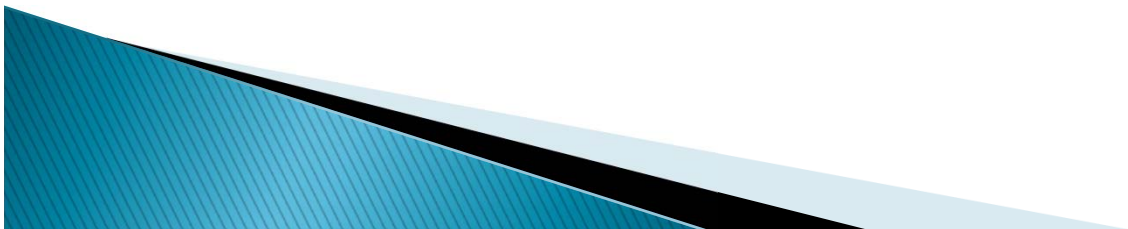
- ▶ Replace curb and gutter, replace pavement, replace drive aprons, spot repairs of sidewalk
- ▶ Terrace walk replaced unless prop owner requests that it not be replaced.
- ▶ Overall street widths same as existing on Bryan, James, Thorp.
- ▶ Reconfigure street ends James (driveways + lift station), Thorp (cul-de-sac)

Scope – Street work

- ▶ Daley drive – add curb cuts for cross walk across Daley, add cross walk across Bryan @ Daley.
- ▶ Daley – Typical curb north side, alley (flat) curb south side. Width similar to existing (slightly wider than ex., with the alley curb).

Proposed Design

- ▶ Review Plan.....



Terrace Rain Gardens

- ▶ Optional for those who want them & have suitable terraces (wide, flat, adequate space between driveways/trees, etc., no utility conflicts). If interested, contact Phil Gaebler pgaebler@cityofmadison.com, 266-4059 ASAP.

Assessment Policy

- ▶ Concrete Curb, existing Sidewalk & Drive Aprons: Owner 50% / City 50%
- ▶ Sanitary Sewer Lateral: Owner 25%/ City 75%
- ▶ Rain garden (OPTIONAL) Owner \$100/City pays the balance
- ▶ 40 ft frontage ballpark PRELIMINARY \$3700 –will vary at each property (frontage, driveway size, amount of sidewalk repair needed, etc).
- ▶ Payable in lump sum or over 8 years w/ 3% interest

Tentative Schedule

- ▶ Mail estimated assessments 2/23/18
- ▶ BPW Hearing 3/7/18
- ▶ CC Hearing 3/20/18
- ▶ Advertise for Bids on 4/5/18
- ▶ Construction beginning early June 2018.

Construction – Terraces

- ▶ Whole terrace/Right-of-way will get disturbed. Remove any plantings, raised beds, structures, stone landscaping, retaining walls, pavers, railings, etc. that you wish to save from the terrace prior to construction. Contractor will not replace/reinstall these items.

Construction

- ▶ Parking removed for project duration
- ▶ Road closed during project, local traffic only
- ▶ Residential driveways closed up to 20 days, commercial drives remain accessible (brief interruptions). Contractor will notify you in advance of driveway closures.
- ▶ Typically ~2 planned water shut-offs (up to 8 hours but usually about 4 hours) – contractor will notify ahead of time. Occasionally emergency shut-offs if old main breaks.

Mailings you will get from us...

- ▶ Estimated assessments + public hearing info for BPW and CC.
- ▶ Driveway forms (please read + fill out + return to us to express your preference!)
- ▶ Informational letter prior to start of work (save! Will have inspector's contact info + Contractor info)
- ▶ Finalized assessment/bill – about a year after work is done
- ▶ Feel free to call/contact us anytime w/ questions!

Contacts

- ▶ Project Manager, Street & Sidewalk design –
Lisa Coleman 266-4093
lcoleman@cityofmadison.com
- ▶ Storm Sewer – Fadi El Musa Gonzalez 243-5214
felmusagonzalez@cityofmadison.com
- ▶ Sanitary Sewer – Mark Moder 261-9250
mmoder@cityofmadison.com
- ▶ Water Utility – Pete Holmgren 261-5530
pholmgren@madisonwater.org
- ▶ Rain Gardens – Phil Gaebler, 266-4059
pgaebler@cityofmadison.com
- ▶ Forestry– Marla Eddy 266-4450
meddy@cityofmadison.com

Discussion

