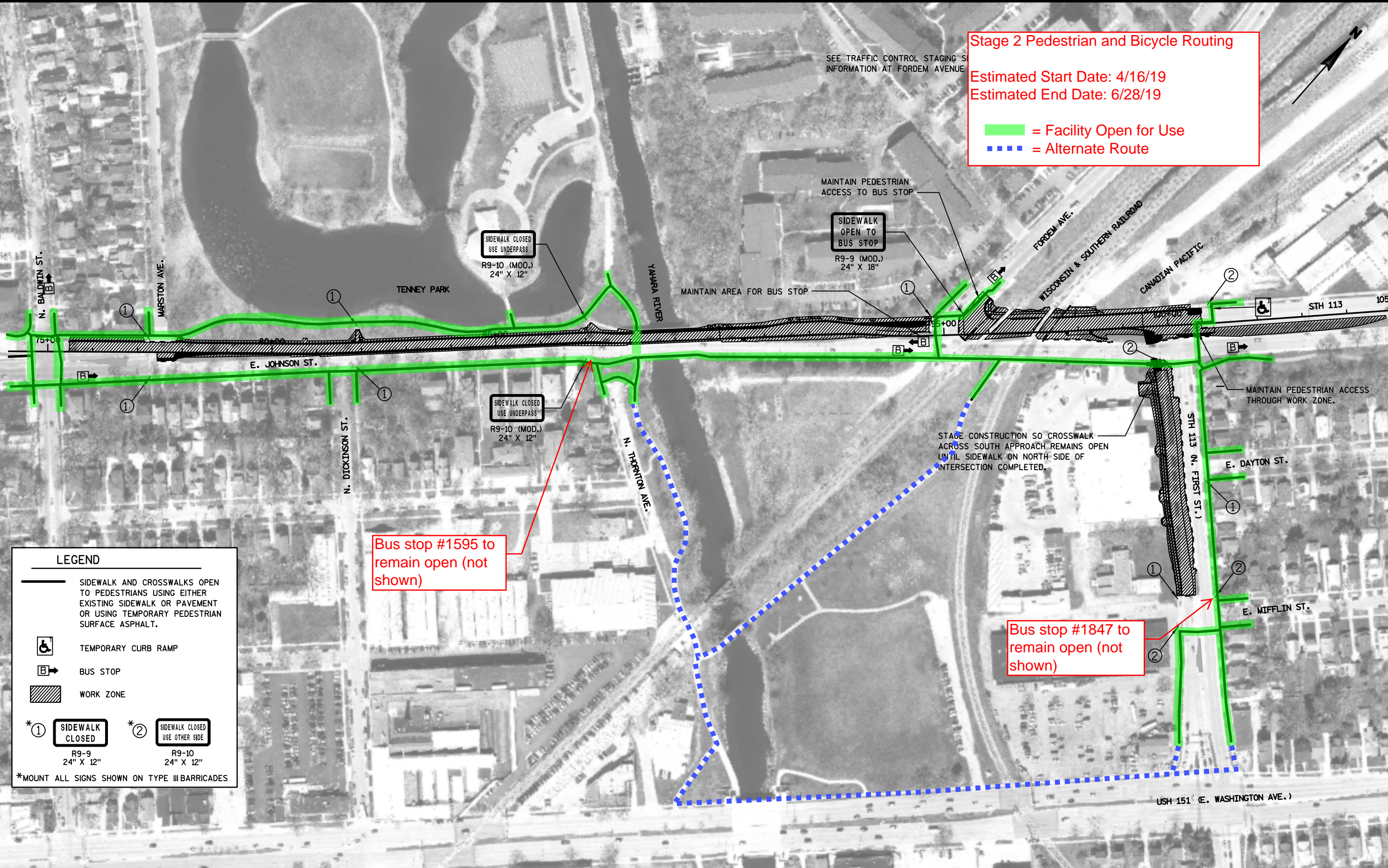


Stage 2 Pedestrian and Bicycle Routing
 Estimated Start Date: 4/16/19
 Estimated End Date: 6/28/19

█ = Facility Open for Use
- - - = Alternate Route



LEGEND

- SIDEWALK AND CROSSWALKS OPEN TO PEDESTRIANS USING EITHER EXISTING SIDEWALK OR PAVEMENT OR USING TEMPORARY PEDESTRIAN SURFACE ASPHALT.
- TEMPORARY CURB RAMP
- BUS STOP
- WORK ZONE
- SIDEWALK CLOSED**
R9-9
24" X 12"
- SIDEWALK CLOSED**
R9-10
24" X 12"

*MOUNT ALL SIGNS SHOWN ON TYPE III BARRICADES

Bus stop #1595 to remain open (not shown)

Bus stop #1847 to remain open (not shown)