



Public Involvement Meeting #1

Garver Path

(Sugar Avenue – Milwaukee Street)



Introductions & Project Contacts

Reid Stiteley

City of Madison Engineering

(608) 266-4093

rstiteley@cityofmadison.com

Chris Petykowski, P.E.

City of Madison Engineering

(608) 267-8678

cpetykowski@cityofmadison.com

Aaron Steger, P.E.

KL Engineering, Inc.

(608) 663-1218

asteger@klengineering.com

Hannah Mohelnitzky

City of Madison Engineering

Public Information Officer

(608) 242-6003

hmoelnitzky@cityofmadison.com

Alder Marsha Rummel

City of Madison Common Council

district6@cityofmadison.com

Alder Grant Foster

City of Madison Common Council

district15@cityofmadison.com



Meeting Outline & Expectations

6:00 – 6:15	Open House
6:15 – 6:45	Welcome & Project Presentation
6:45 – 7:15	Q & A / Comments
7:15 – 8:00	Open House



Meeting Goals



- Purpose & Need of the Project
 - Benefits to the Community
- Preliminary Design Features
 - Pathway & Structures
 - Aesthetics & Lighting
- Project Schedule
 - Design and Construction
- Provide Feedback & Ask Questions

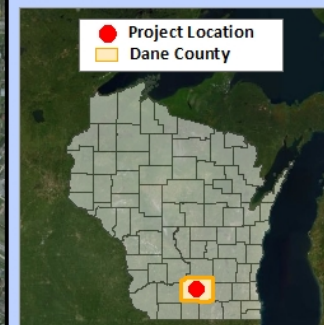
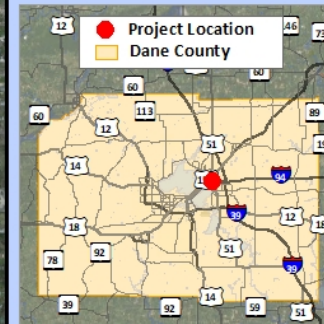


Project Overview



Project Location

Project ID: 5992-10-40
City of Madison, Garver Path
(Sugar Ave – Milwaukee St)
Non-Highway
Dane County



Project Purpose & Need



- Existing Path & Structure Condition
- Access to Neighborhoods, Parks, and Commercial Areas



Project Purpose & Need

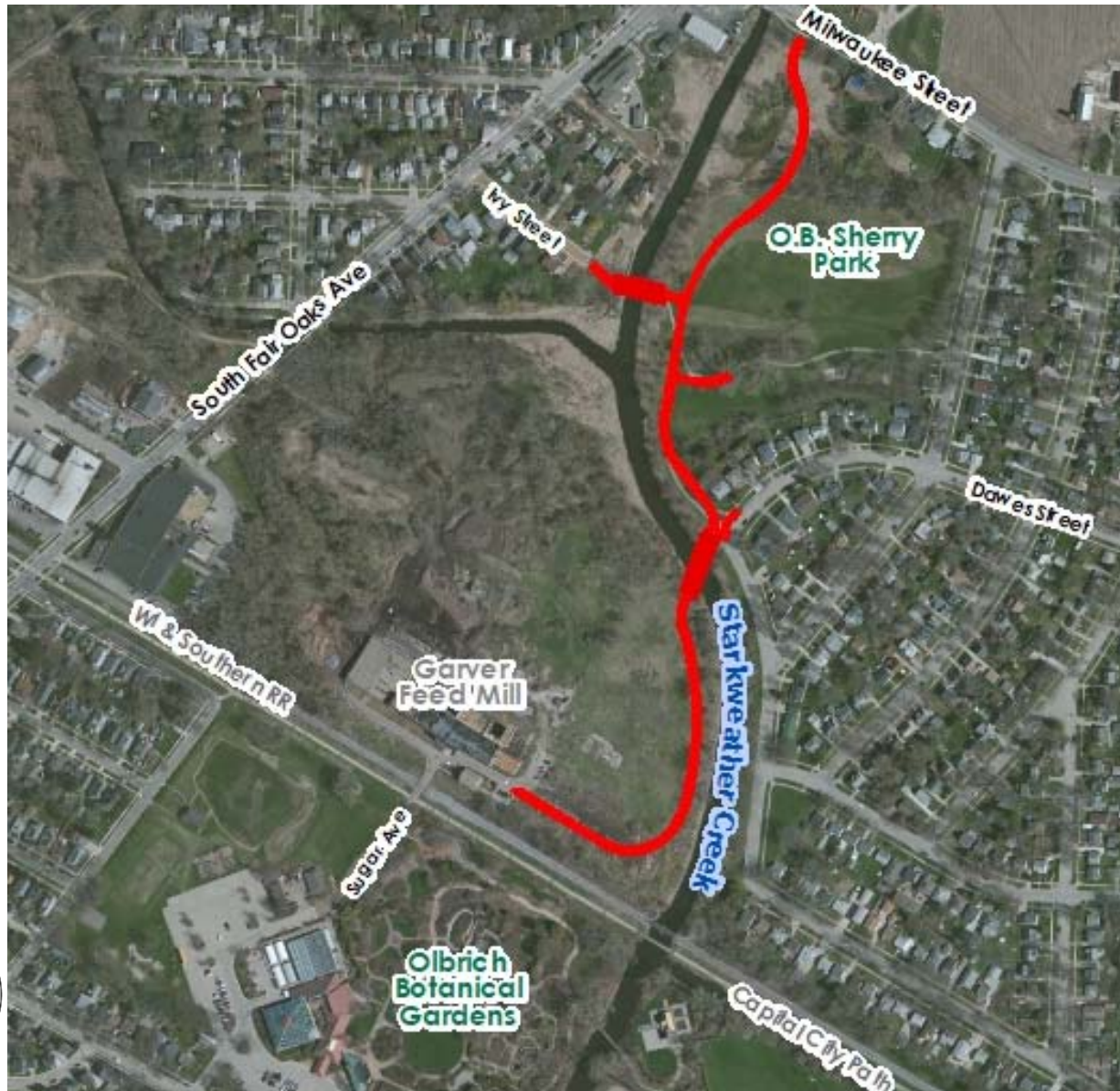
- Pathway Connections & Network
 - Dawes Street to Capital City Path
 - Ultimate Connection to Sun Prairie



Future Pathway Network



Future Garver Path



Proposed Improvements



Typical Section

- 10-ft Wide Asphalt Path
- 14-ft Clear Width Across Structures



Proposed Improvements



Garver Feed Mill

- Pathway Routed thru Garver Feed Mill
- Shared-Use with Bikes & Vehicles
- Pavement Marking & Signing for Awareness
- National Register of Historic Properties

Section 4(f) Resource Evaluation & Documentation:

Special consideration given to certain park lands and conservation areas as well as to National Register or Register eligible historic sites.



Proposed Improvements

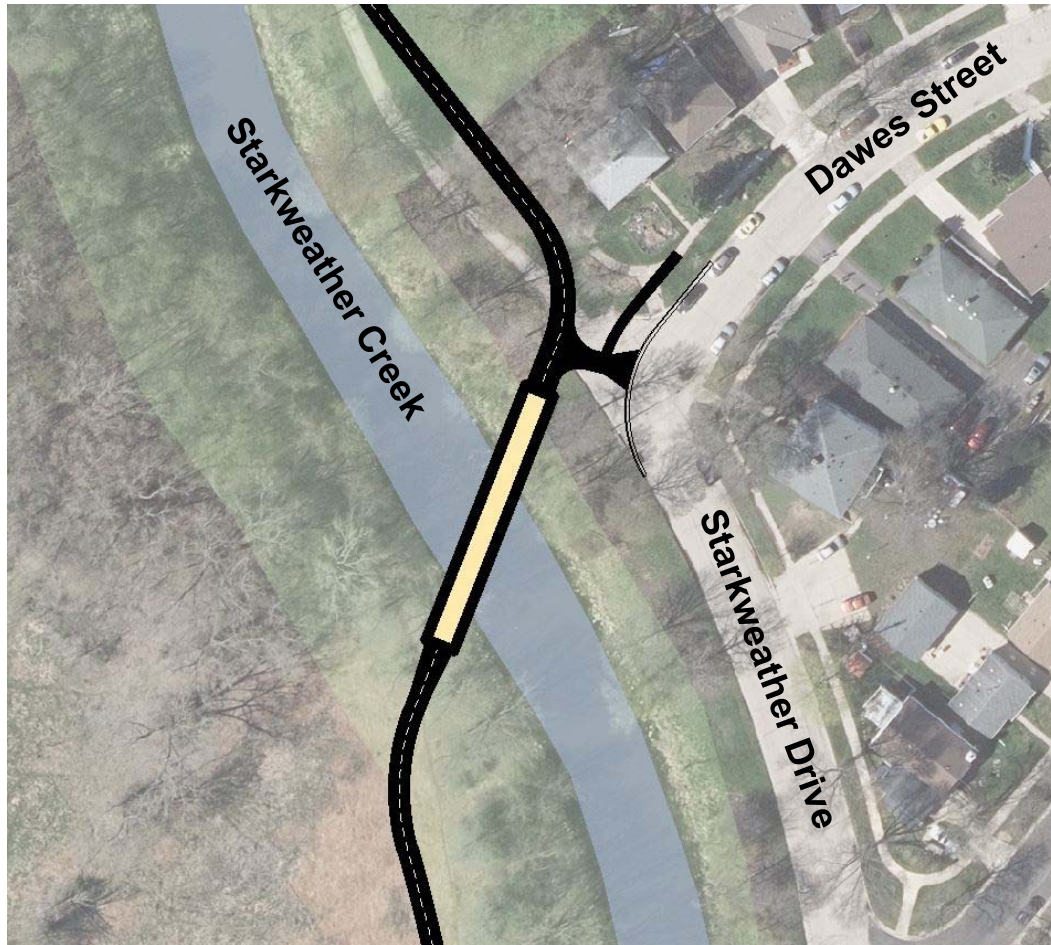


Option 2B

- Green Sharrow Pavement Markings
 - Bicycles
 - Pedestrians
- STOP Signs for Access Road
 - Awareness of “Traffic” Mix



Proposed Improvements

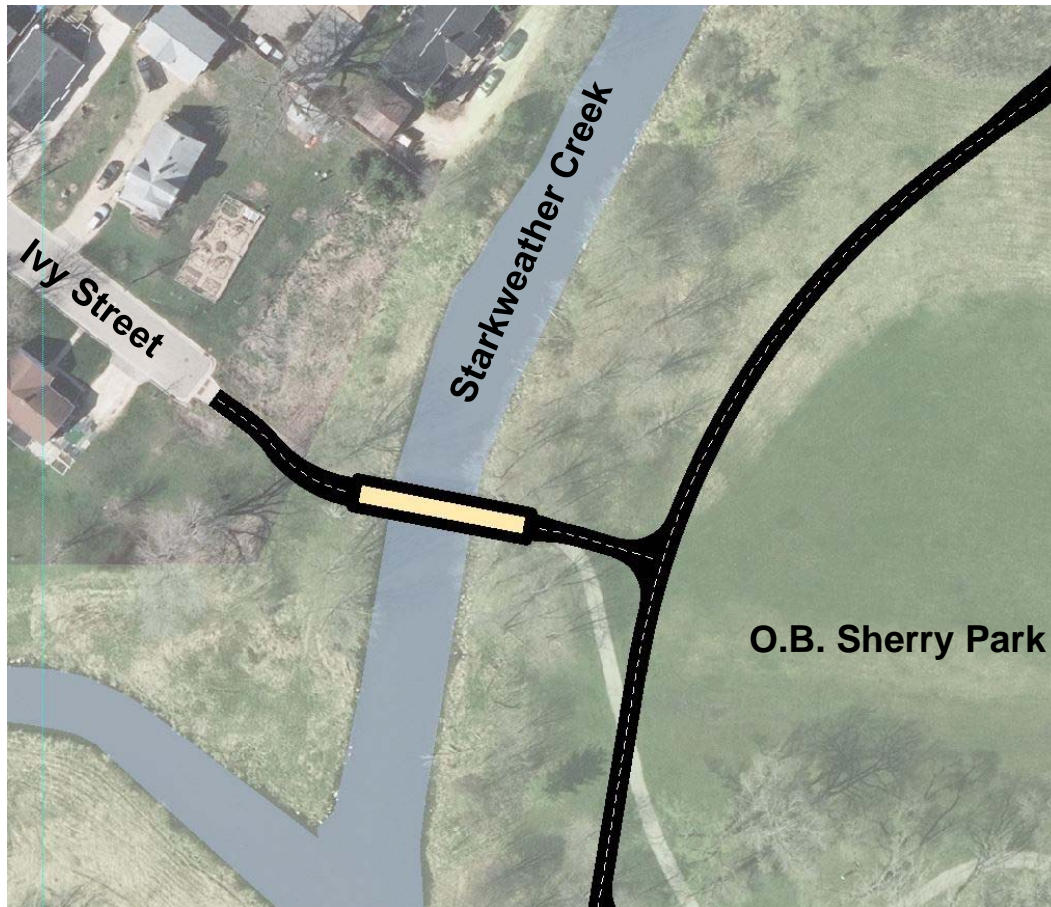


Dawes Street

- New Bridge Structure over Starkweather Creek
- Navigational Clearance under Bridge for Paddlers
- Structure/Path Alignment Minimizing Tree & Park Space Impacts
- Sidewalk & Curb Ramp Realignment



Proposed Improvements



Ivy Street

- Replace Bridge Structure over Starkweather Creek
 - Wider for User Safety
 - Concrete Deck for Plowing
- Improve Navigational Clearance under Bridge for Paddlers



Proposed Improvements



O.B. Sherry Wetland near Milwaukee Street

- New Structure over O.B. Sherry Park Wetlands
- Various Bridge & Culvert Options being Considered
- Avoid Starkweather Creek Floodway Limits
- Connection to Milwaukee Street



Proposed Improvements



Structure Aesthetics

- Natural Weathered Steel Truss Structure
- Concrete Deck
 - Consistent Maintenance
 - Safety (Tripping & Slipping)
- Cut Limestone Abutments along Creek



Proposed Improvements



Pathway Lighting

- Along Path
 - User Safety & Security
 - On “All” Night
- LED Fixtures with Spill Control Feature
 - 3000K Color Temperature
 - 20-ft Poles



Proposed Improvements



Ongoing Design Tasks

- Starkweather Creek Floodway and Floodplain Impacts
- Structure Type, Size, Location over O.B. Sherry Park Wetlands
- Path Design Through Garver Feed Mill Development
- Construction Access Route



Project Schedule & Costs

Summer – Fall 2019

- Preliminary Design
- Environmental Document

Winter 2019/2020 – Summer 2020

- Final Design
- 2nd Public Involvement Meeting

Spring 2021 – Summer 2021

- 3rd Public Involvement Meeting (Pre-Construction)
- Construction

Anticipated Construction Costs


- \$1.7 Million
 - \$850,000 (Federal Funds)
 - \$850,000 (Local Funds)



Project Information & Website

<https://www.cityofmadison.com/engineering/projects/garver-path>

Garver Path



Project Details

- Project Type: [Bike](#)
- Location(s):
 - 3267 Garver Green
Madison, WI 53714
- Area: East
- Aldermanic District(s): [District 6](#)
- Estimated Schedule: 05/10/2021 to 08/27/2021
- Project Status: In Design

Project Contact:

Reid Stiteley
608-266-4093
rstiteley@cityofmadison.com

[Active Project List](#)

Subscribe to Email List:

Subscribe
for Email
Updates



Comment Forms
Please Return by August 2, 2019



Comments or Questions ?

