

# John Nolen Watershed

Proposed Conditions  
100-Year Rain Event

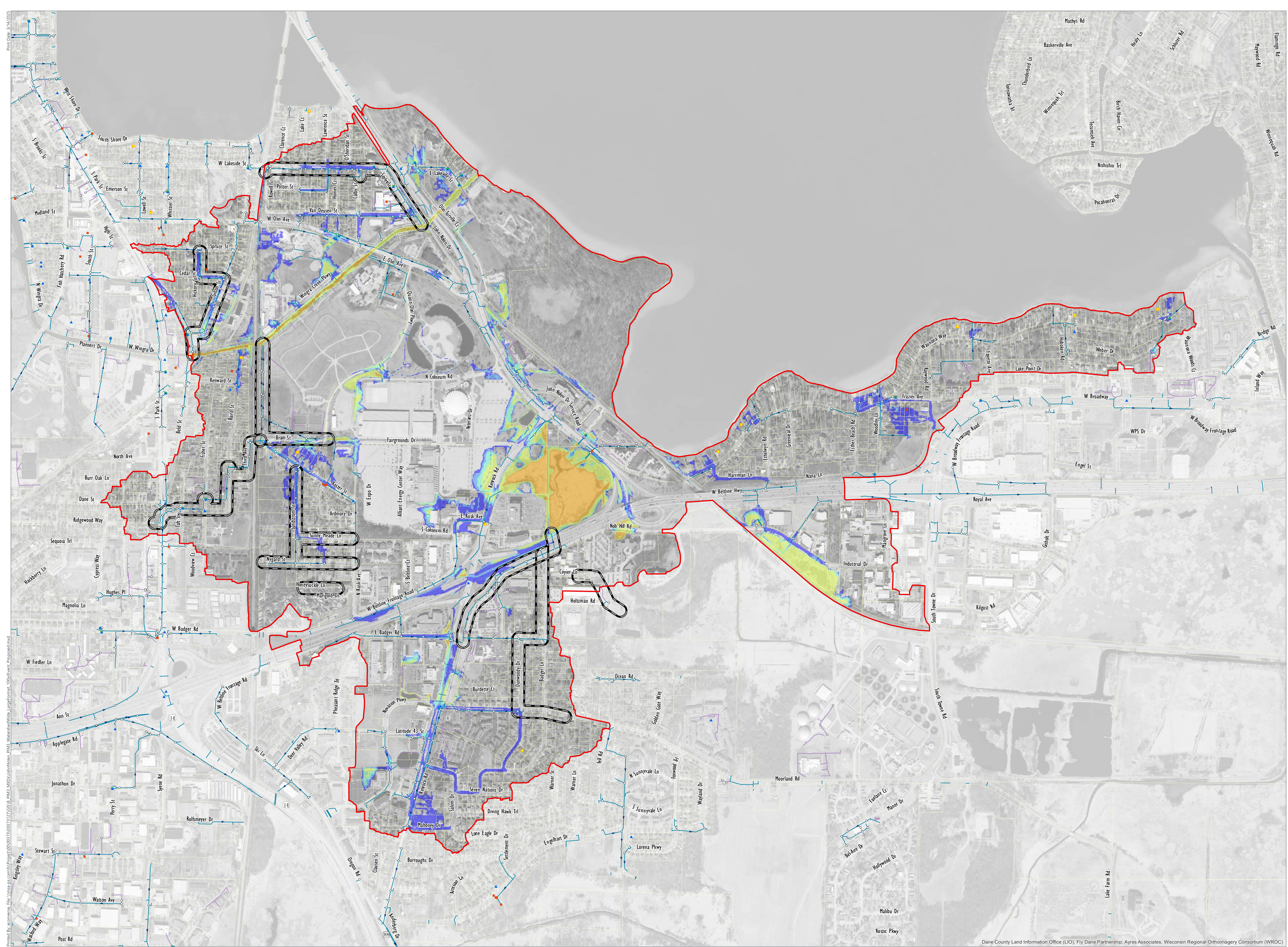
City of Madison Watershed  
Studies

- Proposed Solution Area
- John Nolen Watershed
- Access
- Inlet/Catch Basin
- Public Pipe
- Private Pipe
- Open Channel
- Reported Flooding
- Historic/Observed Flood Points
- Priority Inlets
- Operations Flooding Points

1% Annual Exceedance Probability Storm

Maximum Water Depth (ft)

- 0 - 0.25
- 0.25 - 0.5
- 0.5 - 1
- 1 - 3
- 3 - 6
- > 6



Data Sources:  
Storm System: City of Madison (2022)  
Aerial: City of Madison (2024)  
Flooding Reports/Observations: City of Madison



0 300 600 Feet

