



# E MAIN STREET AND S HANCOCK STREET CONSTRUCTION - 2025

Public Information Meeting  
City of Madison Engineering Division  
[3/4/2025]

*Thank you for attending. We will begin shortly...*



# Meeting Technical Housekeeping

**Thank You for participating!**

- This meeting will be recorded and posted to the project page.
- All attendees should be muted to keep background noise to a minimum.
- Use the “Q and A” button for technical issues with meeting to troubleshoot with staff to assist.
- Use the “Q and A” button to type questions about presentation. Questions will be answered live after the presentation.
- Inappropriate questions may be dismissed.
- Use the **“raise your hand”** button to verbally ask your question. You will be prompted to unmute when it is your turn.

**This meeting is being recorded.**

**It is a public record subject to disclosure.**

By continuing to be in the meeting, you are consenting to being recorded and consenting to this record being released to public record requestors.

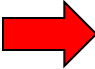




# How to Participate

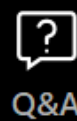
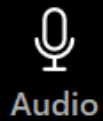
Choose one of the audio conference options

Phone call   **Computer audio**   Call Me

 **Join with computer audio**  
Test speaker and microphone

Automatically join audio by computer when joining a webinar

City of Madison



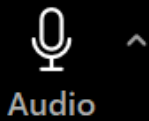
Make sure to join audio 





## How to Participate

City of Madison



Audio

Raise hand

Q&A

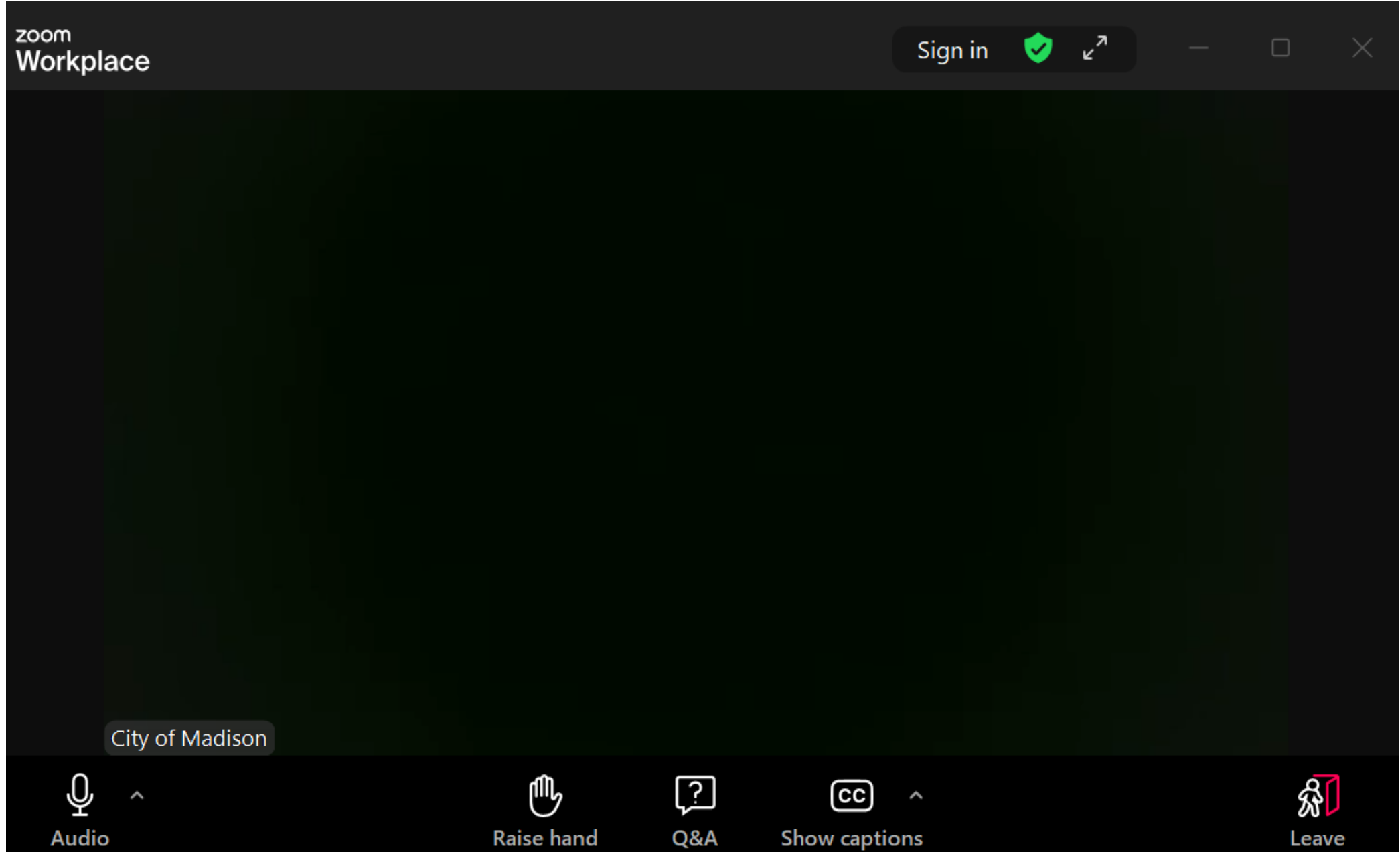
Show captions

Leave

**Raise your hand** to be unmuted  
For comments or ask additional questions.



## How to Participate



Use **Q&A button** if you have technical issues or a question for the panelists.



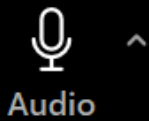
CITY OF MADISON





## How to Participate

City of Madison



**Use Q&A button for all other questions.  
We will answer after the presentation.**



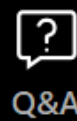
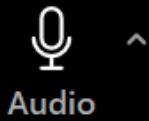


## How to Participate

To leave the meeting, click leave.



City of Madison



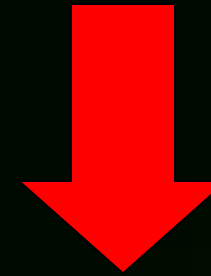




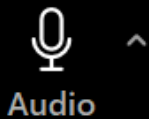
## How to Participate

**If you'd like to enable closed captioning, click "show closed captions" button on the bottom of the screen.**

**This may already be enabled. If this is not enabled, click the button to allow closed captioning.**



City of Madison



Audio

Raise hand

Q&A

Show captions

Leave



# Presentation Introductions

**Thank You for participating!**

- Welcome (Andrew Zwiig, Principal Engineer, City of Madison)
- Introduction (Alder Michael Verveer, District 4 and Alder Marsha Rummel, District 6)
- Presentation (Emma Almy, Street Engineer and Project Manager)
- Q&A (facilitated by Andrew Zwiig)
  - Assisted by:
    - Todd Chojnowski, Sewer Engineer, City of Madison
    - Tim Pearson, Water Engineer, City of Madison
    - Jeremy Nash, Traffic Engineer, City of Madison
- Presentation available on the website
  - [www.cityofmadison.com/EMainSHancockResurfacing](http://www.cityofmadison.com/EMainSHancockResurfacing)



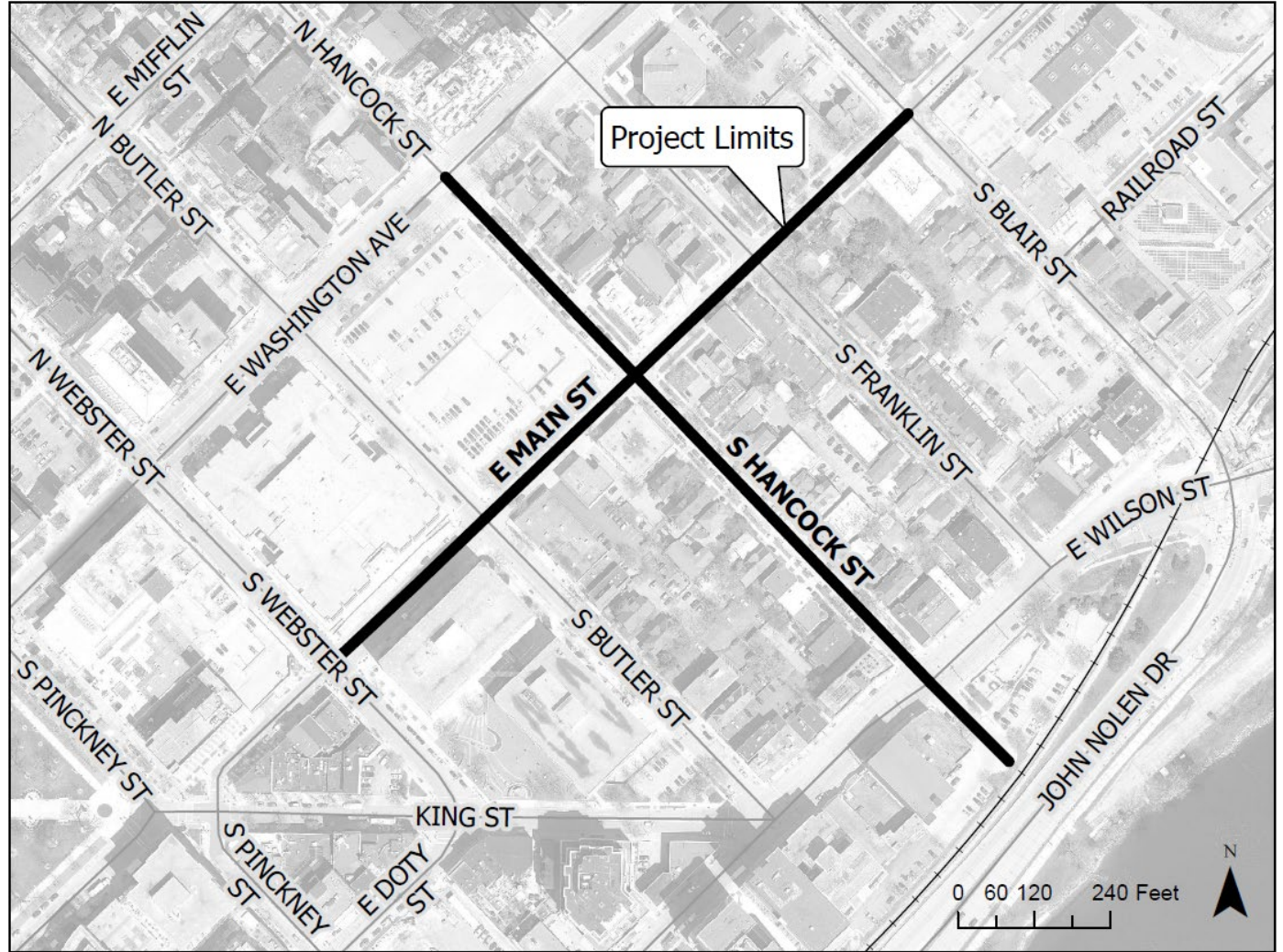
# Presentation Preview

- Project Location
- Meeting Purpose
- Complete Green Sheets
- Vision Zero
- Before and After (For Each Block)
- Contraflow Bike Lane on S Hancock Street
- Sanitary Sewer Lateral Installation
- Water Impacts to Residents
- Proposed Lighting
- Forestry
- MG&E Work
- Construction and Access
- Assessment Policy and Cost
- Project Schedule
- Next Steps
- Contact Information and Resources
- Q & A

# Project Location

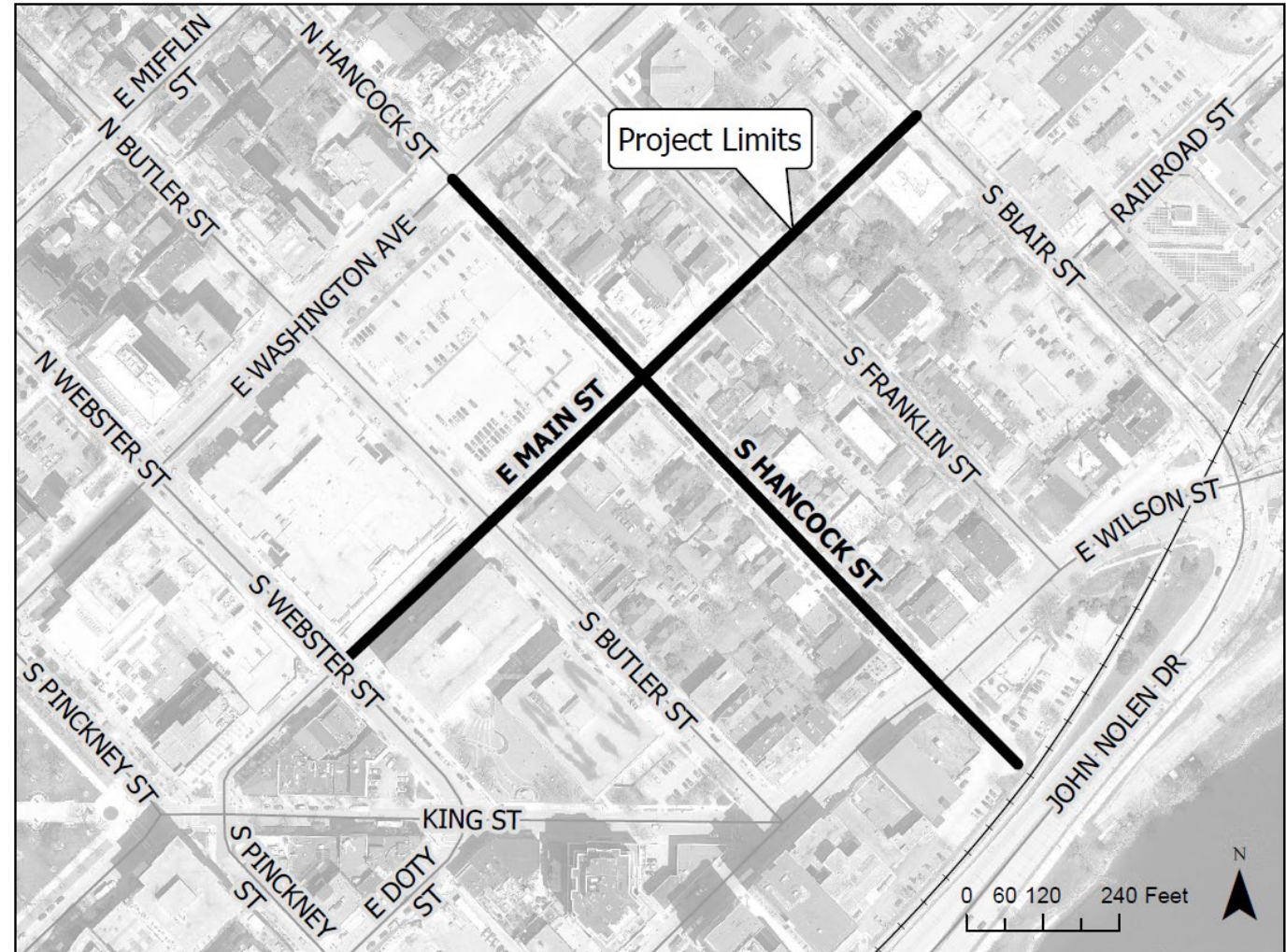
E Main Street – Webster to Blair

S Hancock Street – East Washington  
to railroad/end

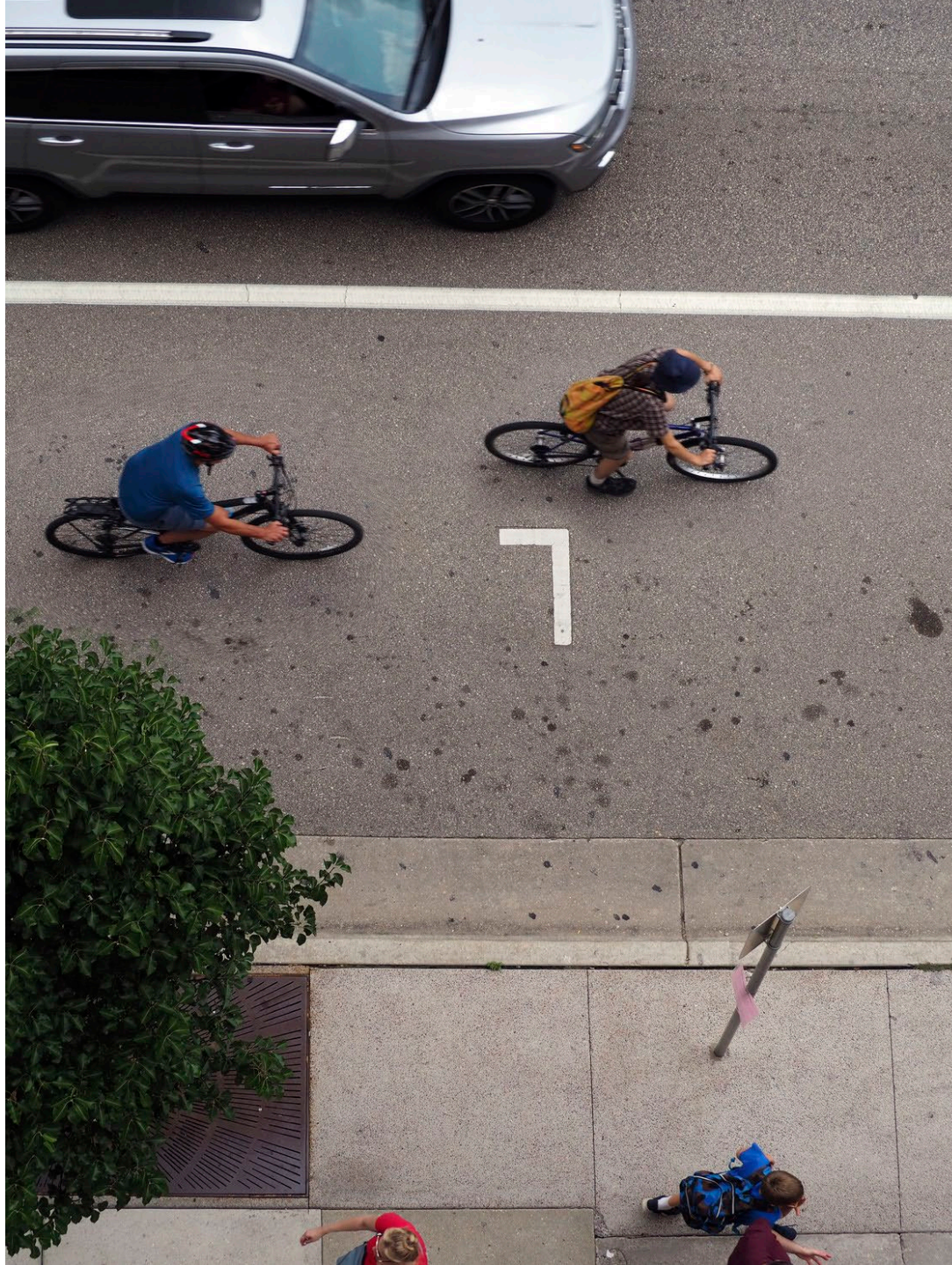


# Meeting Purpose

- To inform the public on the scope of work
- Communicate with residents on the assessments
- To inform the public on the approval schedule and construction access

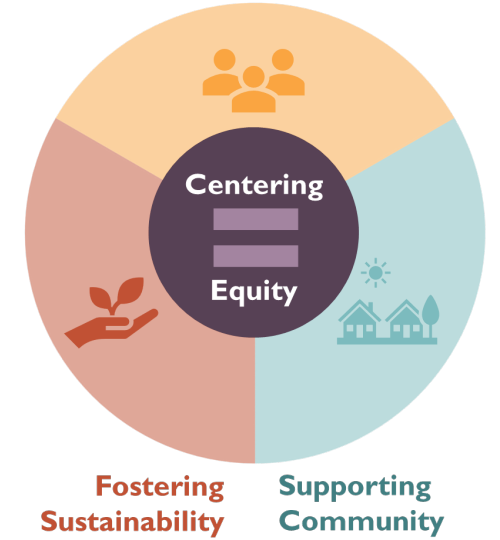


# City of Madison Complete Green Streets Guide



## STREET VALUES

Putting People First



## MODAL HIERARCHY



Approved January 6, 2023



## Principles of Complete Green Streets

- Streets are for everyone, no matter who they are or how they travel.
- There is no one design but instead each design considers the specific context of the neighborhood and street.
- Streets are designed and operated to prioritize safety, comfort and access for all users.
- Green infrastructure integrates sustainability in the right of way to help our City be more resilient and helps provide a welcoming public place.

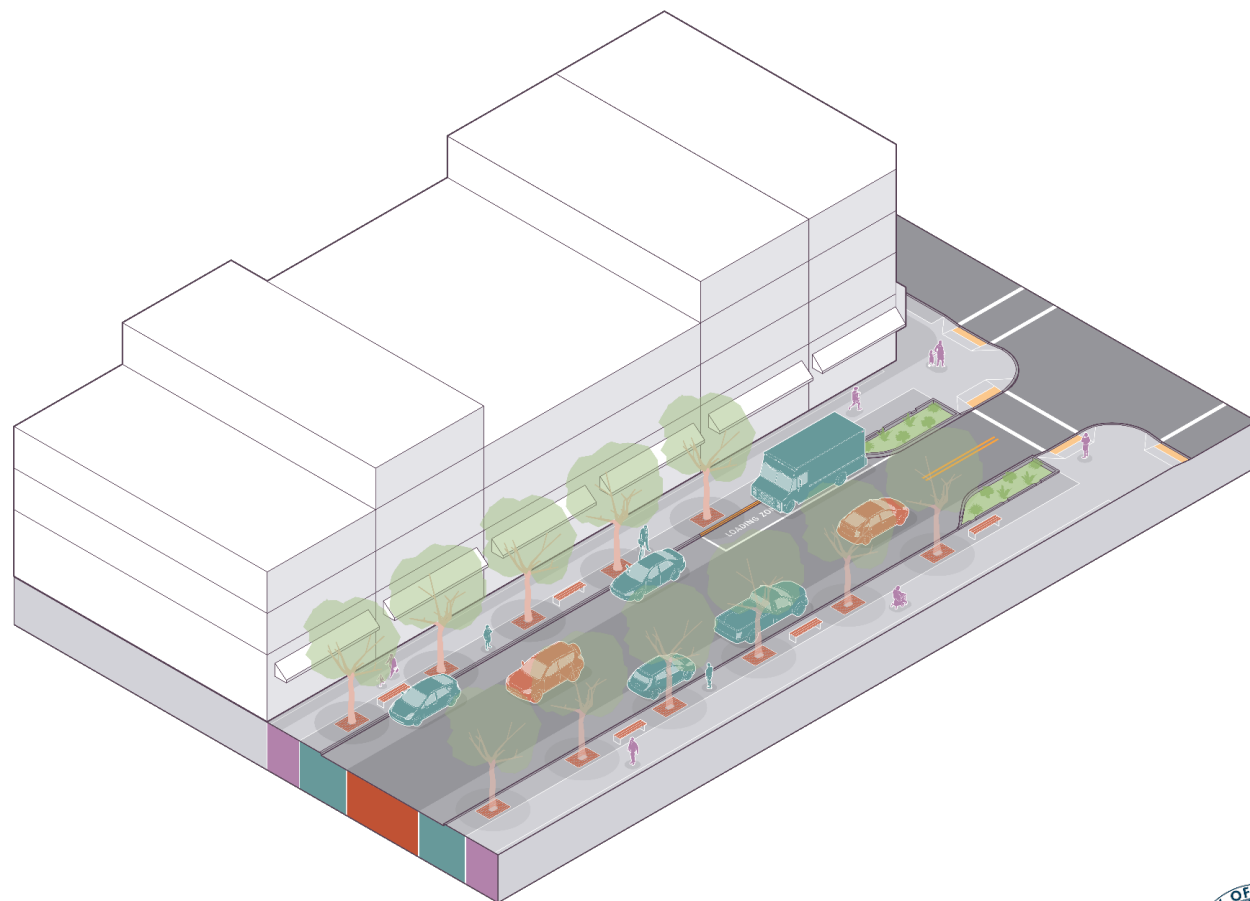
# E MAIN STREET

## Street Type: Mixed-Use Neighborhood Street

**Context:** Downtown and mixed-use corridors and districts.

**Description:** Streets that provide access and convey relatively low numbers of people.

**Target Speed:** 20–25 mph

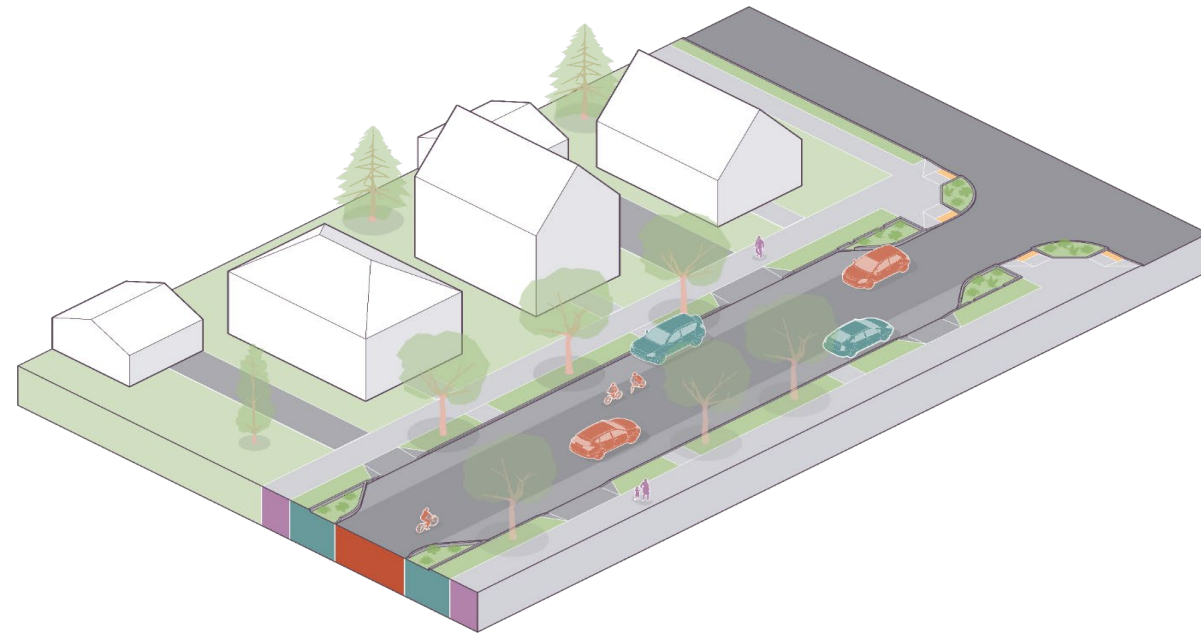




# HANCOCK STREET

## Neighborhood Street

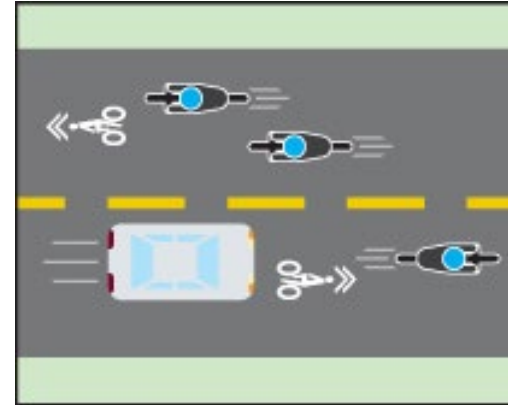
**Context:** Residential neighborhood  
**Description:** Wider neighborhood streets. Includes some higher-traffic streets and transit routes that should be designed to prioritize neighborhood quality of life. Allows two drivers to pass each other without stopping.  
**Target Speed:** 20 mph or less



# E Main St

## All Ages Ability Bike Network Street

- Priority street for safe, comfortable bike connection
- Serves as alternative to East Washington Ave
- Bike Boulevard
  - Preferred motor vehicle traffic volume of less than 2,000 vehicles per day
  - Speed of 20 miles per hour



# VISION ZERO MADISON



- ▶ Initiative to eliminate traffic deaths and severe injuries on City streets by 2035
- ▶ Increase safe, healthy, equitable mobility for all ages and abilities

## Crash History

- S Hancock St – 1 crash since 2019, property damage only (PDO)
- E Main St – 5 crashes since 2019, 4 PDO and 1 injury

## Current Walking and Biking Facilities

- Sidewalks on both sides of street
- Shared space with motor vehicles for bicyclists

VISION  
ZERO  
MADISON

ACTION PLAN  
2020 - 2035

CITY OF MADISON



# Before – 200 Block of E Main Street

## Webster to Butler

### Aboveground

- Pavement Rating – Fair
- Curb Rating – Fair
- Ped ramps –  $\frac{3}{4}$  not compliant with standards
- Street Width – 48' gutter to gutter
- Terrace and Sidewalk - Good
- Streetlights – north side only
- Street trees – 4 along the south side

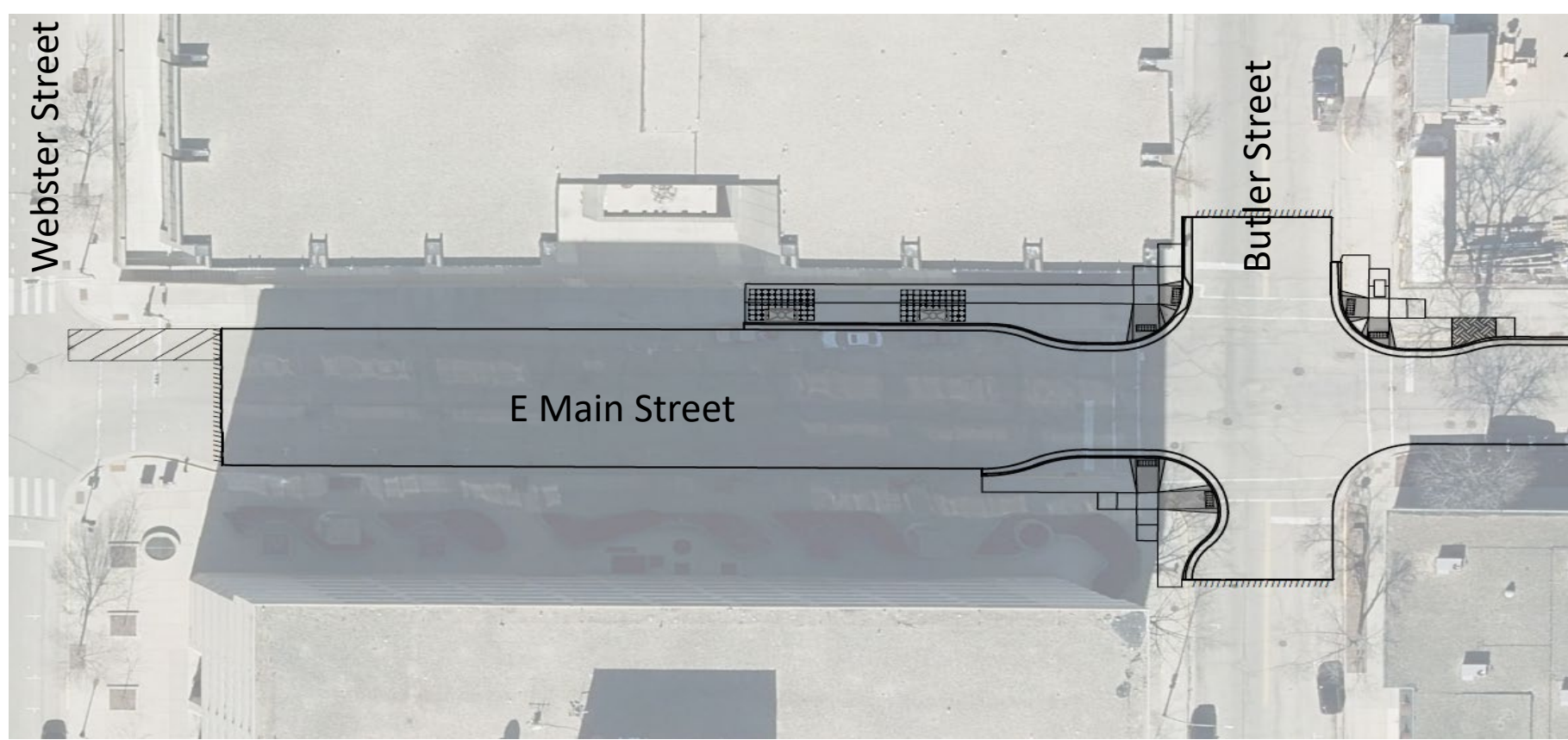
### Underground

- Sanitary Sewer – None (Abandoned in 2013)
- Storm Sewer - 15" Concrete (2013), 15" Clay (1910)
- Water Utility – 4" Sand Cast Iron (1882)



In front of GEF buildings, looking east towards Butler

# After – 200 Block of E Main Street



## Webster to Butler Aboveground

- New pavement and base
- Replace poor section of curb on north side
- Bumpout curb and replace ped ramps at  $\frac{3}{4}$  corners of Butler intersection
- Replace or install new streetlights as needed
- Plant 2 trees (with terrace support systems) in front of GEF 1
- New pavement markings

Sidewalk access will be maintained on one side

## Underground

- Sanitary Sewer – No sanitary sewer work anticipated
- Storm Sewer – New concrete pipe and new inlets at Butler intersection
- Water Utility – New 8" main and add hydrants at Butler intersection

# Before – 300 Block of E Main Street

Butler to Hancock

## Aboveground

- Pavement Rating – Fair
- Curb Rating – Fair
- Ped ramps –  $\frac{3}{4}$  not compliant with standards
- Street Width – 36' gutter to gutter
- Terrace and Sidewalk - Good
- Streetlights – north side only
- Street trees – 6 along the north side, 3 along the south side

## Underground

- Sanitary Sewer – 6" Clay in street (1910), 8" PVC in southern sidewalk (1996)
- Storm Sewer - 15" Clay (1910)
- Water Utility – 4" Sand Cast Iron (1882)

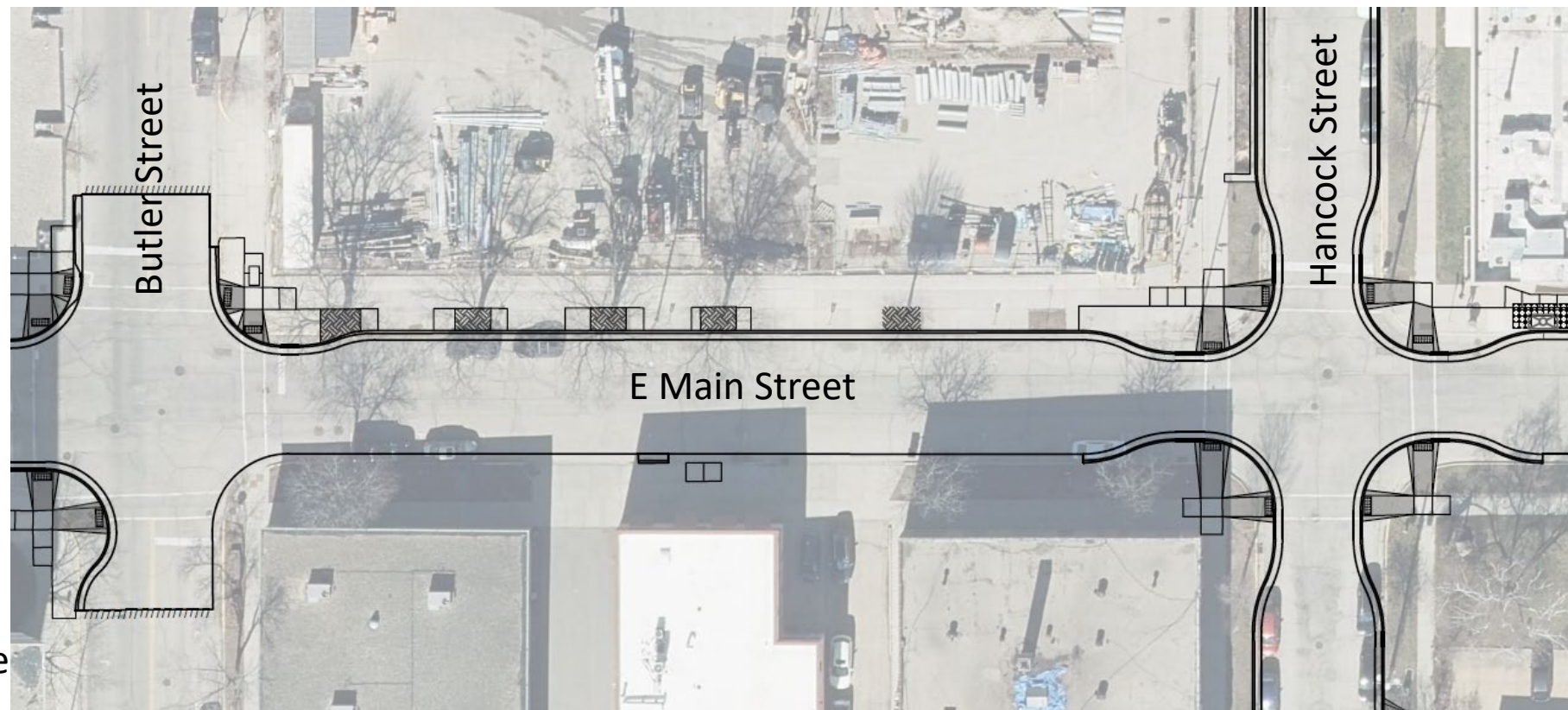


In front of daycare, looking east  
towards Hancock

CITY OF MADISON



# After – 300 Block of E Main Street



## Butler to Hancock Aboveground

- New pavement and base
- New curb on north side
- Bumpout curb and replace ped ramps at Hancock intersection
- Replace or install new streetlights as needed
- Expand cutouts for trees on north side
- New pavement markings

## Underground

- Sanitary Sewer – New PVC main in street
- Storm Sewer – New RCP and new inlets at Hancock intersection
- Water Utility – New 8” main and new hydrants at intersection

Sidewalk access will be maintained on one side

# Before – 400 Block of E Main Street

Hancock to Franklin

## Aboveground

- Pavement Rating – Fair
- Curb Rating – Good
- Ped ramps – None compliant with standards
- Street Width – 36' gutter to gutter
- Terrace and Sidewalk - Good
- Streetlights – north side only
- Street trees – 1 along the north side, 3 along the south side

## Underground

- Sanitary Sewer – 6" Clay (1910), 8" PVC (1996)
- Storm Sewer - 15" Clay (1910)
- Water Utility – 4" Sand Cast Iron (1882)



In front of St Patrick's, looking west towards Capitol

CITY OF MADISON





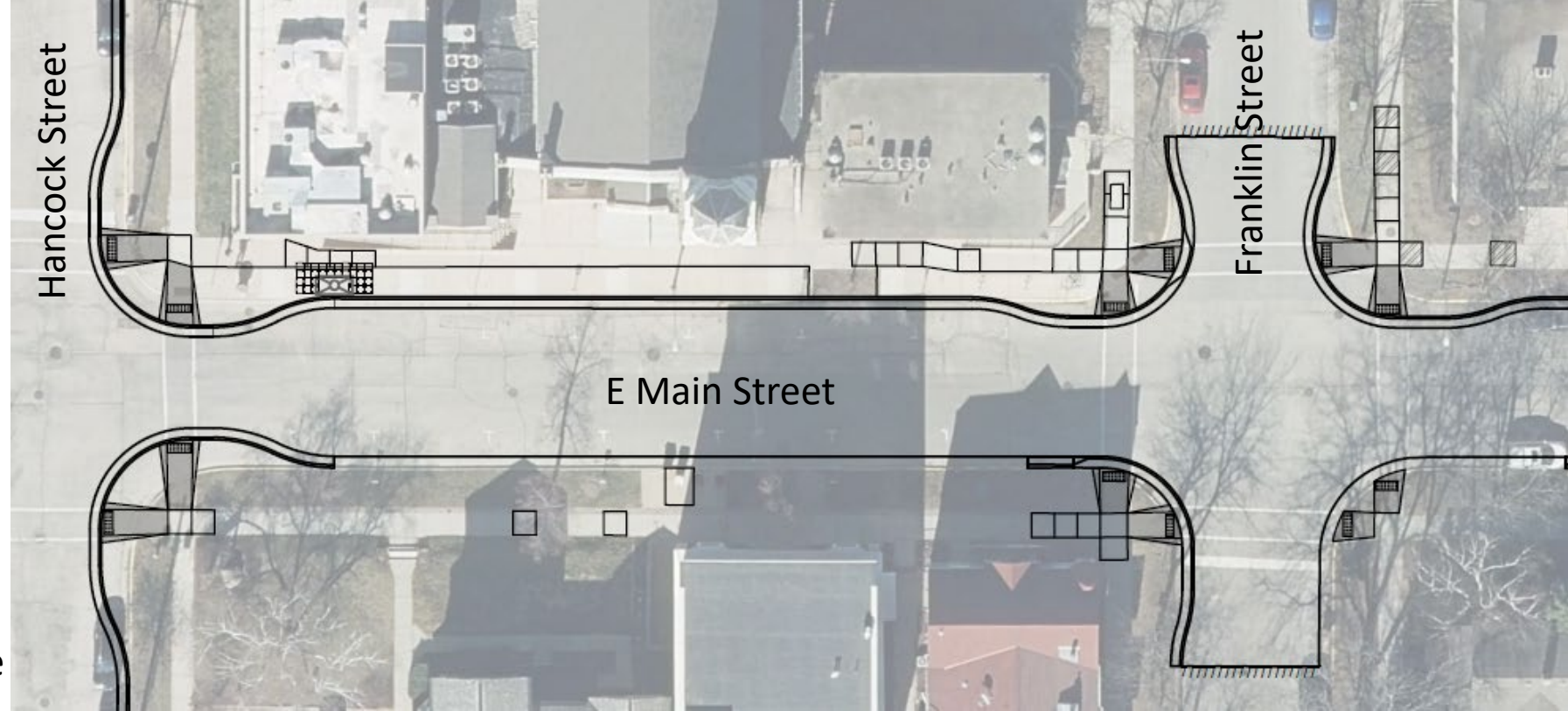
# After – 400 Block of E Main Street

## Hancock to Franklin Aboveground

- New pavement and base
- New curb on north side
- Bumpout curb and replace ped ramps at Franklin intersection
- Replace or install new streetlights as needed
- Plant 1 trees (with terrace support system) in front of church
- New pavement markings

## Underground

- Sanitary Sewer – New PVC mains in street
- Storm Sewer – New RCP and new inlets at Franklin intersection
- Water Utility – New 8” main and new hydrants at intersection



Sidewalk access will be maintained on one side

# Before – 500 Block of E Main Street

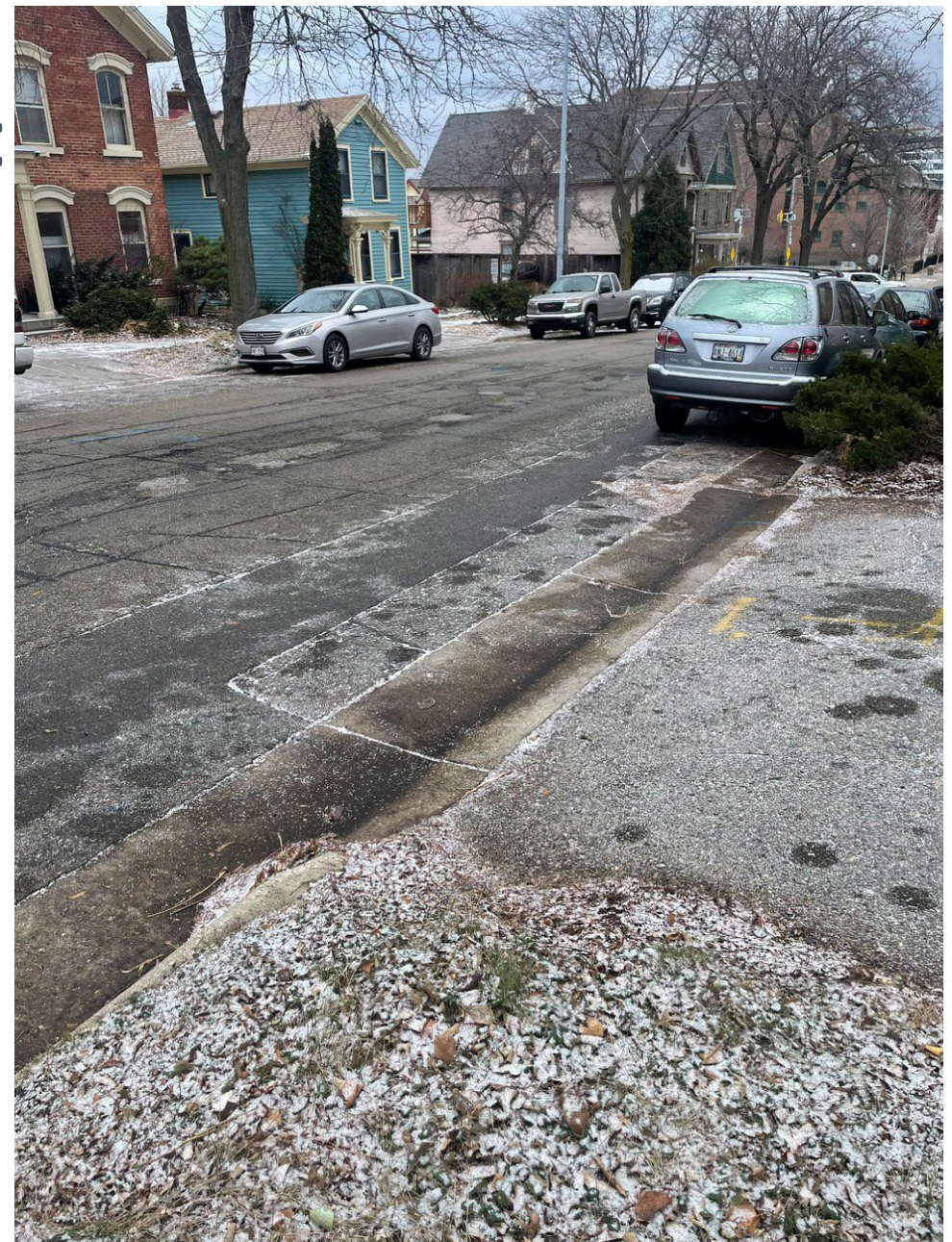
## Franklin to Blair

### Aboveground

- Pavement Rating – Fair
- Curb Rating – Good
- Street Width – varies 36'-38' gutter to gutter
- Terrace and Sidewalk - Good
- Streetlights – north side only
- Street trees – 8 along the north side, 5 along the south side

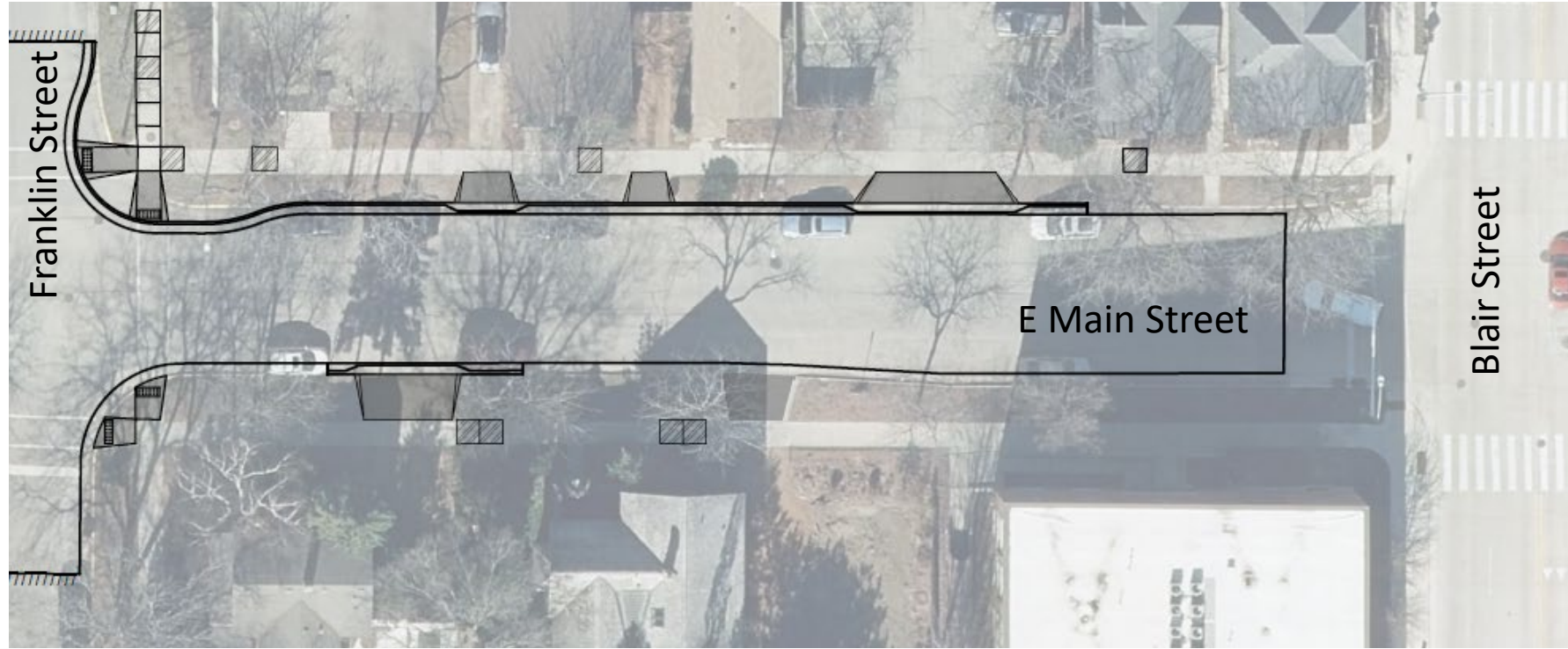
### Underground

- Sanitary Sewer – 8" PVC (1999)
- Storm Sewer – 30" Concrete (1999)
- Water Utility – 4" Sand Cast Iron (1882)



In front of Emily Thompson house,  
looking east towards Blair

# After – 500 Block of E Main Street



## Franklin to Blair

### Aboveground

- New pavement and base
- New curb and driveways on north side for sanitary lateral work
- Spot replace sidewalk squares to remove trip hazards and for sanitary laterals
- Replace or install new streetlights as needed
- New pavement markings

### Underground

- Sanitary Sewer – New PVC laterals
- Storm Sewer – No work planned
- Water Utility – New 8” main

Sidewalk access will be maintained on one side

Contractor to maintain access to driveways as much as possible

# Before – First Block of S Hancock Street

## East Washington to Main

### Aboveground

- Pavement Rating – Poor
- Curb Rating – Fair
- Street Width – 33' gutter to gutter
- Terrace and Sidewalk – Decent
- Streetlights – west side only
- Street trees – 4 along the west side, 6 along the east side

### Underground

- Sanitary Sewer – 6" Clay (1906)
- Storm Sewer – None in street
- Water Utility – 12" Sand Cast Iron (1930)



In front of southern rain garden, looking north towards East Wash

# After – First Block of S Hancock Street



## N Hancock Street

- Bumpout curb and replace ped ramp in front of Lutheran church
- New storm inlet

## East Washington to Main Aboveground

- New pavement and base
- New curb and driveways
- Bumpout curb and replace ped ramps at East Washington
- Spot replace sidewalk squares for sanitary laterals
- Replace or install new street and ped lights as needed
- New pavement markings

## Underground

- Sanitary Sewer – New PVC main and laterals
- Storm Sewer – New inlets at East Washington
- Water Utility – New 12” main

Sidewalk access will be maintained on one side

Contractor to maintain access to driveways as much as possible

# Before – 100 Block of S Hancock Street

## Main to Wilson

### Aboveground

- Pavement Rating – Poor
- Curb Rating – Fair
- Street Width – 33' gutter to gutter
- Terrace and Sidewalk – Decent
- Streetlights – west side only
- Street trees – 9 along the west side, 9 along the east side

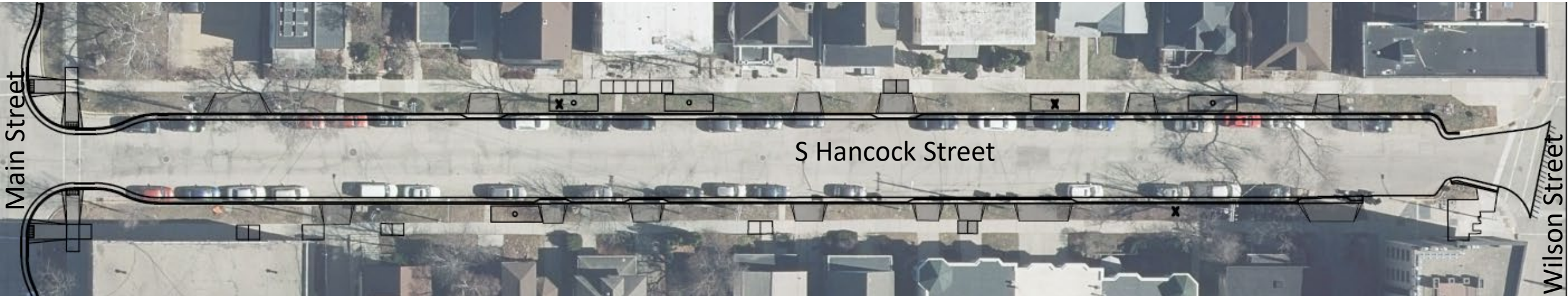
### Underground

- Sanitary Sewer – 6" Clay (1906)
- Storm Sewer – None in street
- Water Utility – 12" Sand Cast Iron (1930)



In front of 110 S Hancock, looking south towards Wilson

# After – 100 Block of S Hancock Street



## Main to Wilson

### Aboveground

- New pavement and base
- New curb and driveways
- Replace sidewalk squares to remove trip hazards and for sanitary lateral replacement
  - Majority will be replaced
- Replace or install new street and ped lights as needed
- New pavement markings
- Plant 5 street trees

### Underground

- Sanitary Sewer – New PVC main and laterals
- Storm Sewer – No work
- Water Utility – New 12" main

Sidewalk access will be maintained on one side

Contractor to maintain access to driveways as much as possible

# Before – 200 Block of S Hancock Street

## Wilson to railroad/end

### Aboveground

- Pavement Rating – Good
- Curb Rating – Good
- Street Width – 40' gutter to gutter
- Terrace and Sidewalk – Good
- Streetlights – east side only
- Street trees – 2 along the west side, 2 along the east side

### Underground

- Sanitary Sewer – 10" Clay (1907)
- Storm Sewer - 20" Clay (1955), 27" Concrete (1980), 21" Concrete and 36" Concrete (1915)
- Water Utility – 16" Ductile Iron (1992)



In front of Water Utility well, looking south towards Lake Monona



# After – 200 Block of S Hancock Street

## Main to Wilson

### Aboveground

- New pavement and base
- New curb for storm and sanitary sewer work
- Replace sidewalk squares for sanitary lateral replacement
- Replace or install new street and ped lights as needed

### Underground

- Sanitary Sewer – New main and laterals
- Storm Sewer – Replace clay storm
- Water Utility – No work

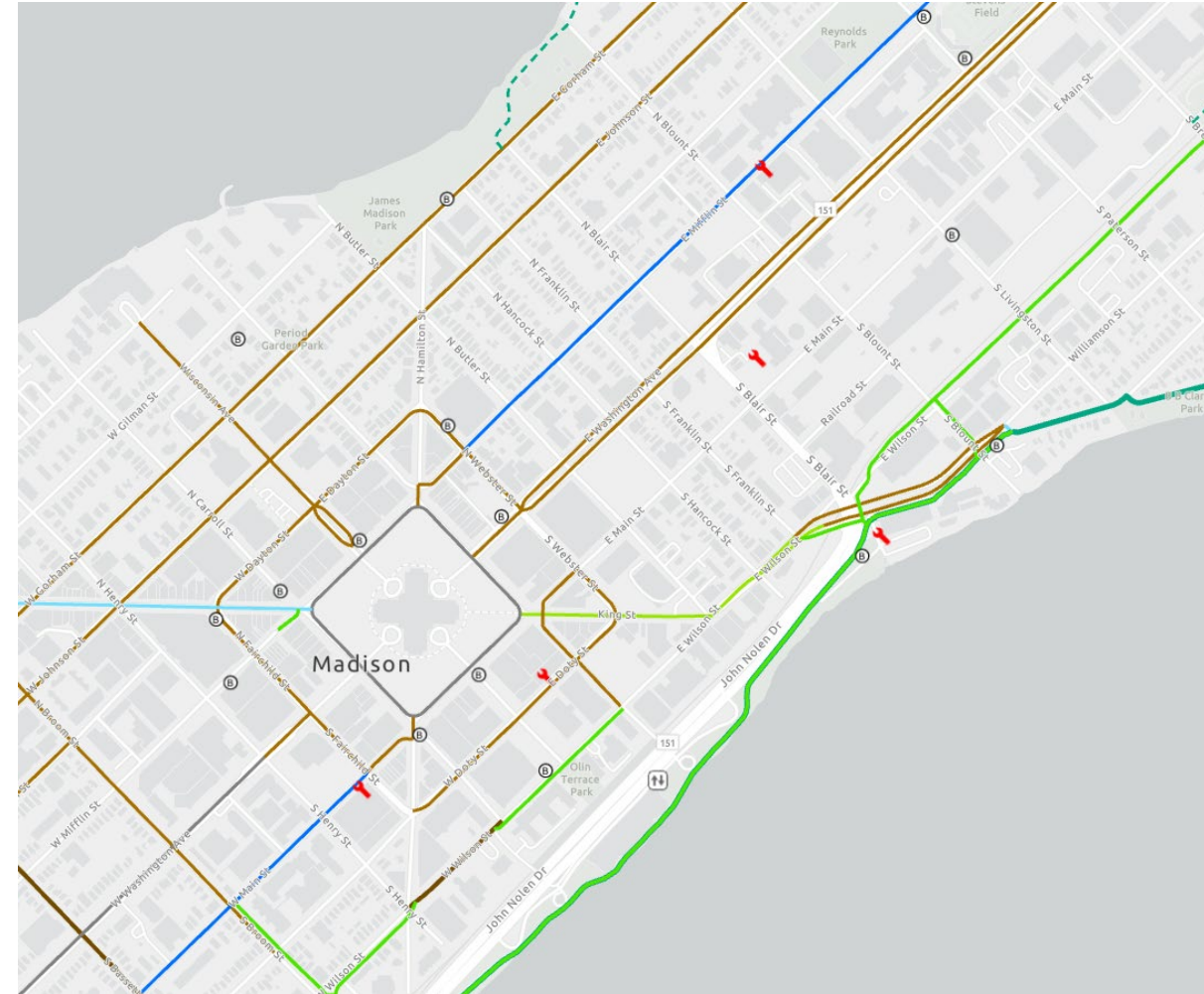


Sidewalk access will be maintained on one side

Contractor to maintain access to driveways as much as possible

# Contraflow Bike Lane on S Hancock Street

- Better bike connectivity
- No changes to parking
- Narrows wide travel lane to standard width
  - Slows vehicle speeds
- Decreases sidewalk riding
- Green skips across E Washington Ave

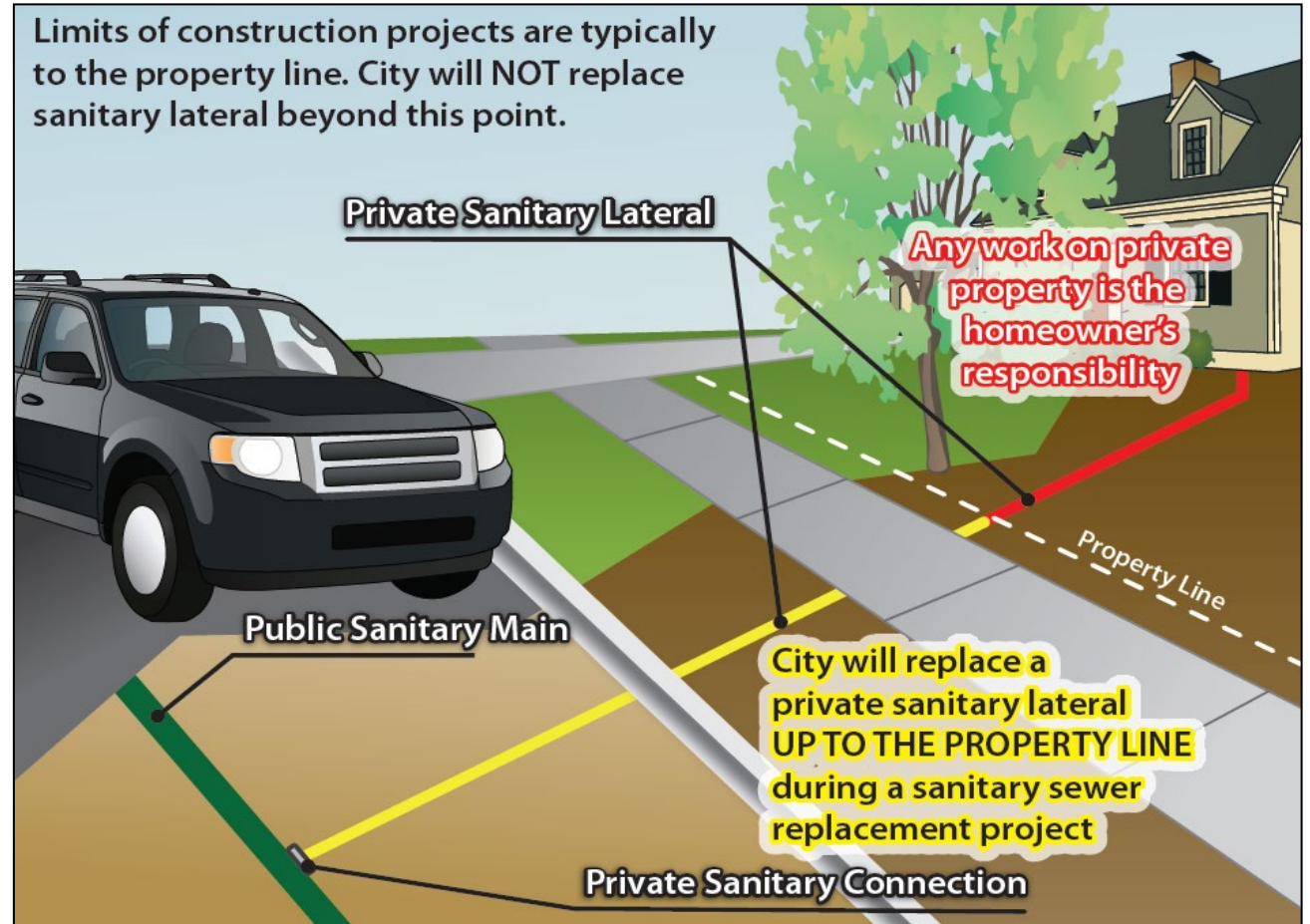


# Contraflow Bike Lane on S Hancock Street (cont'd)



# Sanitary Sewer Lateral Installation

- Replace to property line
- Laterals will be reconnected
- Work beyond the property line is the homeowner's responsibility
- Service will be maintained



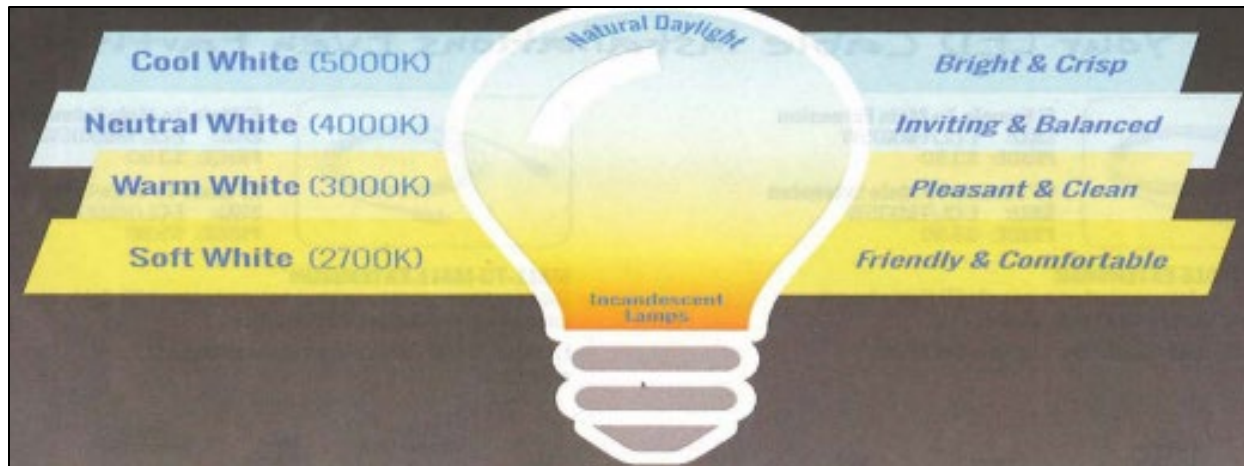
# Water Impacts to Residents

- All replacements and reconnects are funded by the Water Utility, so property owners will not see an assessment for this work
  - Property owners interested in a water service upgrade should contact Tim Pearson.
- The current plan is to replace the water main in place, which will involve a temporary water main system above ground
  - More information to follow
- Each resident can expect 2-3 scheduled water outages during construction
- Scheduled outages are typically 4-6 hours in duration
- Residents will receive a 48-hour notice prior to any scheduled water outage
- Outages can result in air and discolored water in service lines
  - Here is a link for what do in the event this happens:
    - [www.cityofmadison.com/water/water-quality/discolored-water](http://www.cityofmadison.com/water/water-quality/discolored-water)

# Proposed Lighting

## New street lighting along E Main Street

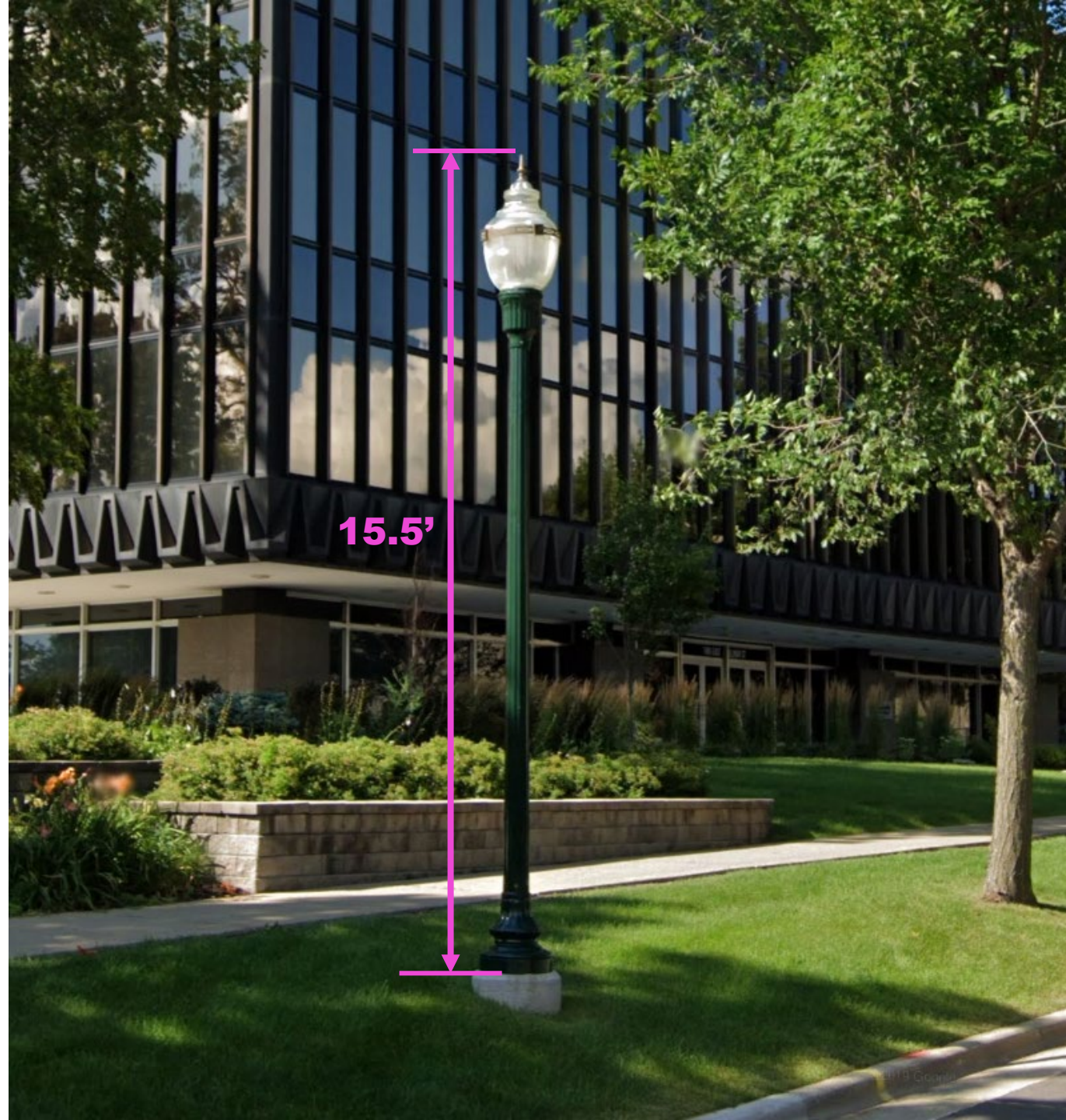
- Steel poles
- Height: 30'
- LED Fixture
  - Lower color temperature – 3,000K
- Installed on one side of the street
  - North terrace
  - Spacing between lights: ~180 feet
- No assessment to property owners to replace existing 30ft tall lights



# Proposed Lighting (cont'd)

## Potential Pedestrian Scale lighting on S Hancock Street

- Bassett Style
- Height: 15.5'
- LED Fixture
  - Lower color temperature – 3,000K
  - House Side Shield to limit back light
- Installed on both side of the Street
  - Spacing between lights: ~90'
  - Mid-block only
    - Tall (30') lights at intersections
- 100% of cost assessable to property owners



# Forestry

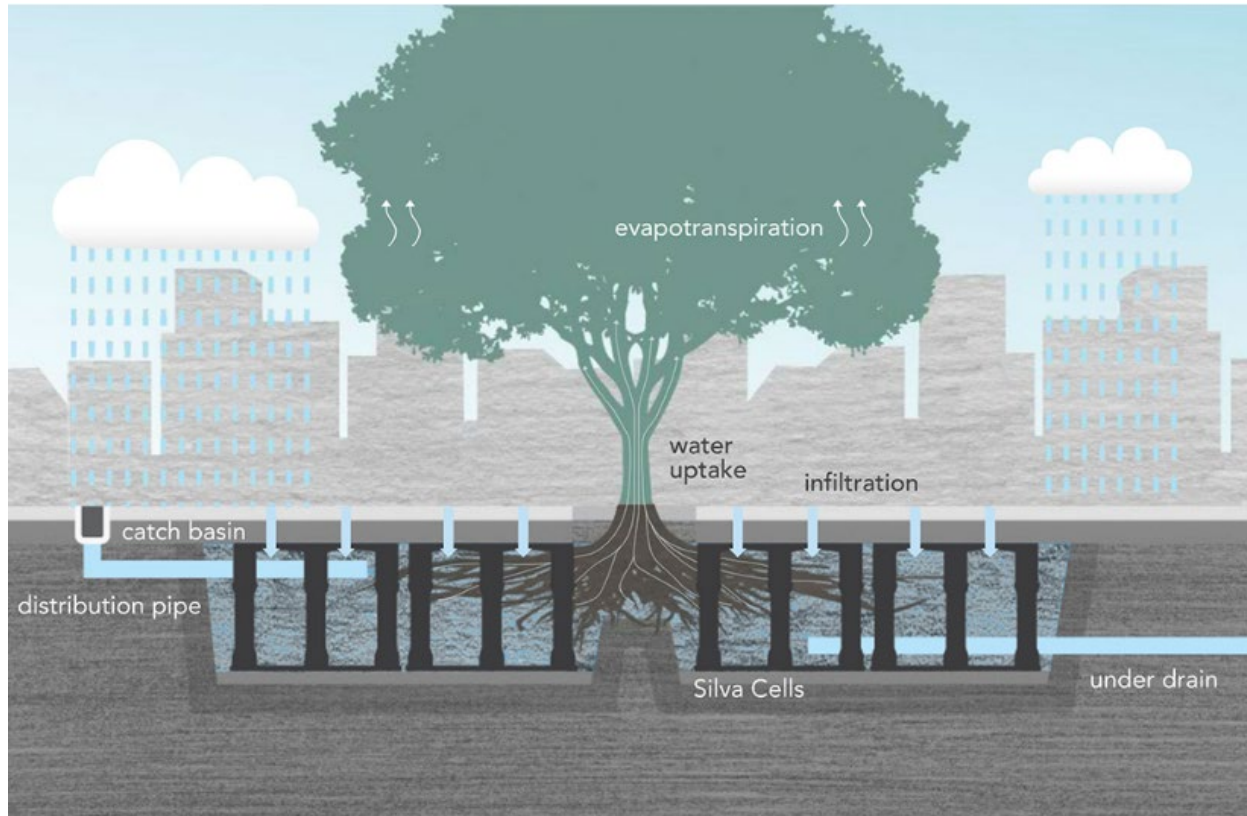
- 4 anticipated street tree removals due to poor health condition
  - 2" Gingko fronting Brayton Lot (along E Main Street)
  - 19" Maple fronting 115 S Hancock St
  - 19" Maple fronting 140 S Hancock St
  - 6" Planetree fronting 139 S Hancock St
- 8 anticipated street tree plantings
  - 2 tree plantings in terrace support systems in front of GEF 1 (along E Main Street)
  - 1 tree planting in terrace support system in front of church (along E Main Street)
  - 2 tree plantings fronting 121 S Hancock St
  - 1 tree planting fronting 112 S Hancock St
  - 1 tree planting fronting 139 S Hancock St
  - 1 tree planting fronting 141 S Hancock St
- Tree Equity Score = 90/100
  - Goal is to protect and maintain existing trees
  - [www.treeequityscore.org](http://www.treeequityscore.org)
- Engineering and Forestry staff are currently working on identifying potential areas for additional tree plantings.





# Forestry (cont'd)

## Terrace Support System



# MG&E Work

- Madison Gas & Electric will be replacing their electric duct in E Main Street, from Webster to Blair.
- This work will most likely require relocations to the gas main.
- Their work is anticipated to begin before the City project and take about 5 months. Engineering and MG&E staff are currently coordinating the schedule of this work.



# Construction & Access

- Construction on Hancock is expected to begin in August 2025 and end October 2025
- Construction on Main is expected to begin Spring 2026 and end Fall 2026
- Residents, property and business owners will be notified 2 weeks prior the start of construction
- Access to commercial driveways will be maintained as best as possible during construction
  - Brief interruptions to access can happen when construction activities are in front of a driveway. The contractor shall coordinate such work with the building manager or business owner.
- Residential driveway access will be maintained during most of construction but can be closed up to a cumulative total of 20 days, residents are notified before
  - Not accessible when contractor is working directly in front
  - Closed when curb, sidewalk, and driveway apron installed
- Standard working hours are 7:00 am to 7:00 pm Monday – Saturday and 10:00 am to 7:00 pm Sundays
- On street parking will not be allowed during construction hours
  - Engineering staff is currently working with Metro Transit staff about allowing residents to park in Brayton Lot during construction. More information to follow.



# Construction & Access (cont'd)

- Any existing landscaping within the Right-of-Way will likely be disturbed
- Please remove any plantings, raised beds, structures, pavers, stone landscaping, railings, etc... that you wish to save from the terrace prior to construction
  - Contractor will not replace/reinstall these items after construction
- Disturbed bare ground will be restored with topsoil, grass seed, and erosion matting

# Assessment Policy & Costs

- Special charge for work being done that has a direct benefit to the property
- Street Assessment Policy
  - Properties assessed for asphalt pavement replacement (10' width) based on property frontage
    - No assessments for Curb & Sidewalk
  - Properties assessed for sewer lateral and driveway apron replacement based on specific dimensions measured during construction
  - Assessed costs for specific items are based on an average of bid prices from the last 3 years of projects = standardizes costs, removes bidding variability
    - Unit Prices for Driveways, Pavement Reconstruction, and Terrace Walks will be set rates
    - Unit Prices for Sanitary Laterals and Private Storm Connections will be based on final bid prices
- Preliminary, estimated assessments to be mailed prior to project construction start
- Each condo owner will receive an assessment letter instead of the condo association
- Final assessments will be calculated, and final billing will be sent the following year of construction completion (mailed in 2027)
- Assessments are payable in lump sum or in up to 8 installments at the current interest rate (4% for 2025 approval)

# Assessment Policy & Costs (cont'd)

Item	Property Owner Share	City Share
10-ft width of Asphalt Pavement Replacement*	100%	0%
Remainder of Pavement width	0%	100%
Driveway Apron Replacement	50%	50%
Sidewalk Replacement	0%	100%
Curb & Gutter Replacement	0%	100%
Sanitary Sewer Main Replacement	0%	100%
Sanitary Sewer Laterals to Property Line Replacement	25%	75%
Storm Sewer Main Replacement	0%	100%
Private Storm Connects, New or Existing	100%	0%
Water Main & Services Replacement	0%	100%
Street Trees Removals & Plantings	0%	100%
Street and Ped Lights Replacement	0%	100%
Street and Ped Lights New Installation	100%	0%

\*Based on LF Frontage of Individual Properties

A reduction factor will be applied to single/two-family residential corner lots



# Project Schedule

- 3/21/2025: Mail Estimated Assessments, Public Hearing Notice
- 4/2/2025: BPW Public Hearing
- 4/15/2025: Common Council Public Hearing
- 6/5/2025: Advertise for Bids
- 8/25/2025: Estimated Start Construction on Hancock



# Next Steps

- Upcoming opportunities for public involvement
  - Fill out the questionnaire if not done already
    - Closes next Tuesday (3/11) at 5 pm
  - Sign-up for project email updates on the website
  - Attend Board of Public Works public hearing
  - Attend Common Council public hearing
- Public notified via website updates and/or mailing
- Visit Project Website
  - [www.cityofmadison.com/EMainSHancockResurfacing](http://www.cityofmadison.com/EMainSHancockResurfacing)





Thank You for Attending!

# Contact Information & Resources

- Questions
  - Please use the [“Q&A”](#) option at the bottom of the screen to type a question.
  - To ask a question verbally, click the [“raise hand”](#) option at the bottom of your screen and the host will unmute you.
- City Staff
  - Street Engineer and Project Manager, Emma Almy, (608) 261-5537, Email: [EAlmy@cityofmadison.com](mailto:EAlmy@cityofmadison.com)
  - Sewer Engineer, Todd Chojnowski, Email: [TChojnowski@cityofmadison.com](mailto:TChojnowski@cityofmadison.com)
  - Water Engineer, Tim Pearson, Email: [TPearson@madisonwater.org](mailto:TPearson@madisonwater.org)
  - Traffic Engineer, Jeremy Nash, Email: [JNash@cityofmadison.com](mailto:JNash@cityofmadison.com)
  - Traffic Engineer, Gretchen Aviles Pineiro, Email: [GAvilesPineiro@cityofmadison.com](mailto:GAvilesPineiro@cityofmadison.com)
- Project Website: [www.cityofmadison.com/EMainSHancockResurfacing](http://www.cityofmadison.com/EMainSHancockResurfacing)
  - Sign-up for project email updates on the website
  - Updates on closures & work progress will be posted to the project website
  - Recording for this meeting will be posted on project webpage

CITY OF MADISON

