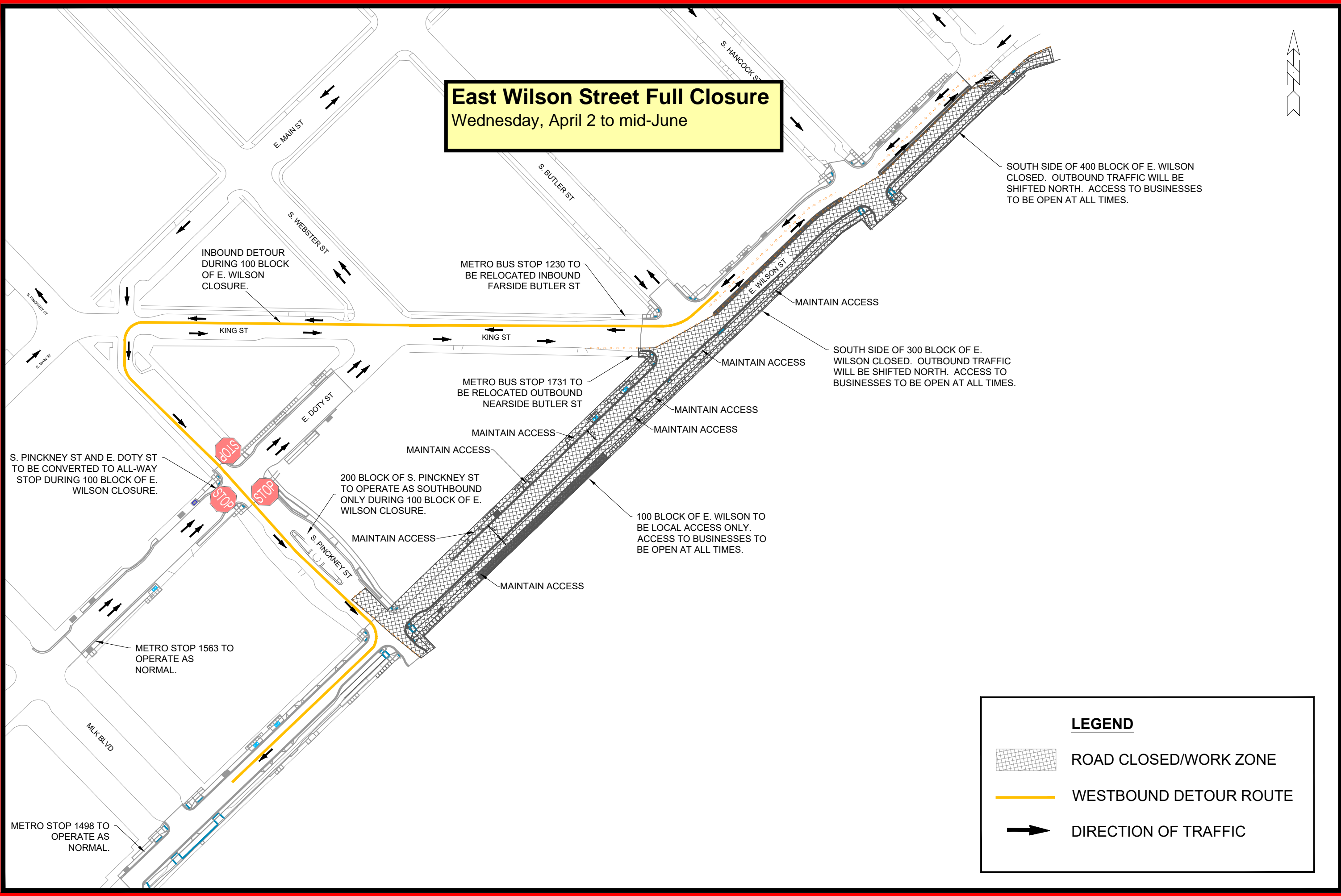
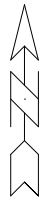


East Wilson Street Full Closure
 Wednesday, April 2 to mid-June



SOUTH SIDE OF 400 BLOCK OF E. WILSON CLOSED. OUTBOUND TRAFFIC WILL BE SHIFTED NORTH. ACCESS TO BUSINESSES TO BE OPEN AT ALL TIMES.

SOUTH SIDE OF 300 BLOCK OF E. WILSON CLOSED. OUTBOUND TRAFFIC WILL BE SHIFTED NORTH. ACCESS TO BUSINESSES TO BE OPEN AT ALL TIMES.

100 BLOCK OF E. WILSON TO BE LOCAL ACCESS ONLY. ACCESS TO BUSINESSES TO BE OPEN AT ALL TIMES.

INBOUND DETOUR DURING 100 BLOCK OF E. WILSON CLOSURE.

S. PINCKNEY ST AND E. DOTY ST TO BE CONVERTED TO ALL-WAY STOP DURING 100 BLOCK OF E. WILSON CLOSURE.

200 BLOCK OF S. PINCKNEY ST TO OPERATE AS SOUTHBOUND ONLY DURING 100 BLOCK OF E. WILSON CLOSURE.

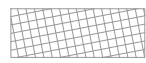


METRO BUS STOP 1230 TO BE RELOCATED INBOUND FAR SIDE BUTLER ST


METRO BUS STOP 1731 TO BE RELOCATED OUTBOUND NEARSIDE BUTLER ST

METRO STOP 1563 TO OPERATE AS NORMAL.

METRO STOP 1498 TO OPERATE AS NORMAL.

LEGEND

-  ROAD CLOSED/WORK ZONE
-  WESTBOUND DETOUR ROUTE
-  DIRECTION OF TRAFFIC

11543		DATE	BY
MADISON, WI		REVISION	
E. WILSON & DOTY ST - RECONSTRUCTION		Designed By: LMC	Date:
TRAFFIC CONTROL - PHASE 1		Scale: 1" = 20'	TE
M:\DESIGN\Projects\11543\CAD\Traffic\11543 - 2025 Construction TC Coordination Phase 1.dwg		CONTRACT NO:	
		11543	
		TE	