

CITY OF MADISON – PROPOSED PROJECT

# Starkweather Creek Streambank Repair

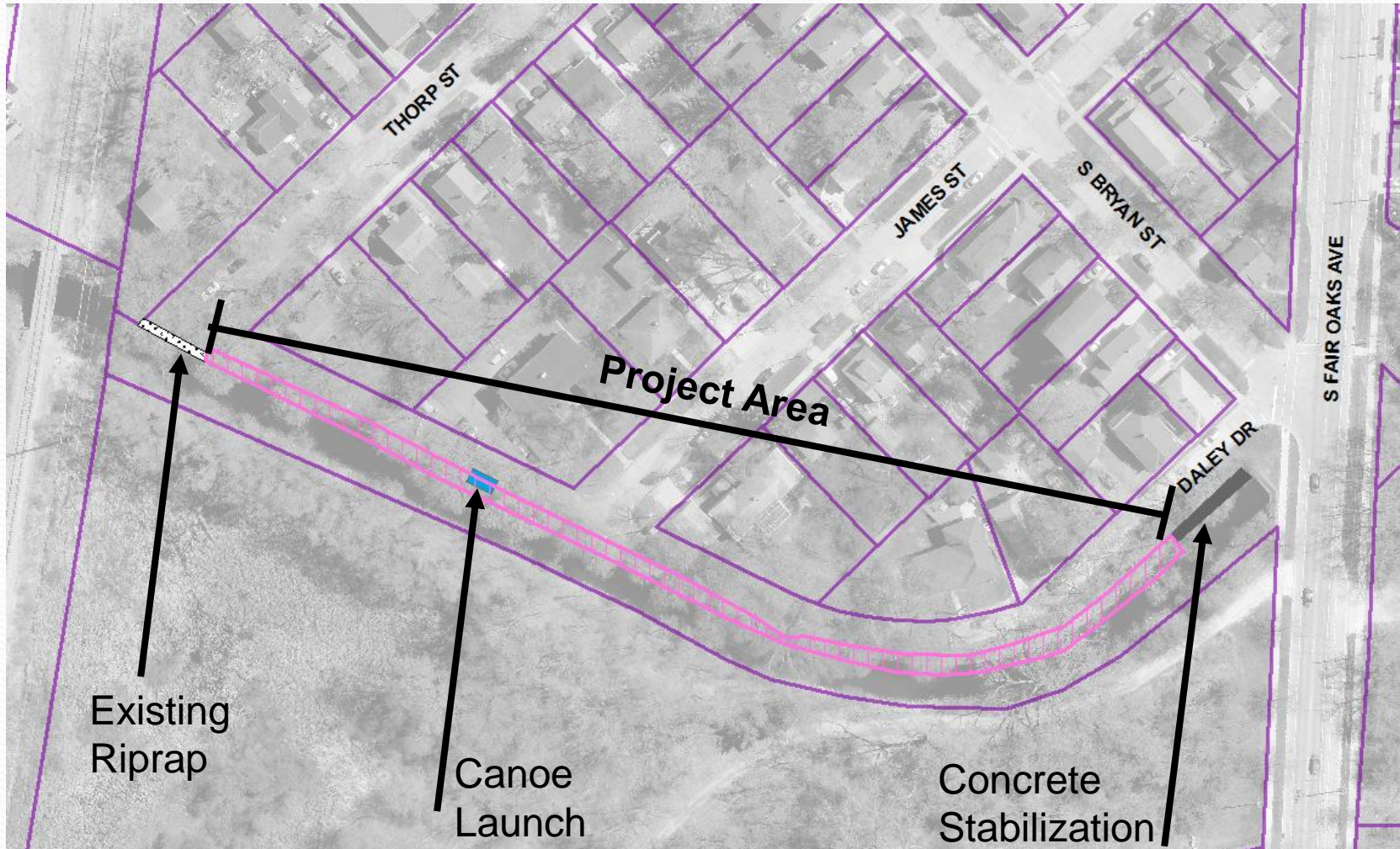


# Overview

- Project Location
- Existing Condition
- Proposed Restoration
- Tree Impacts
- Canoe Launch
- Reconstruction project review



# Project Area-within Right-of-Way



# Starkweather Creek Streambank- Existing Condition



6/5/18 Lake Monona ~845.93'

# Starkweather Creek Streambank- Existing Condition



6/5/18 Lake Monona ~845.93'



6/16/18 Lake Monona ~846.51'

# Starkweather Creek Streambank- Existing Condition



6/16/18 Lake Monona ~846.51'



6/5/18 Lake Monona ~845.93'

# Starkweather Creek - Canoe Launch



6/5/18 Lake Monona ~845.93'



6/5/18 Lake Monona ~845.93'

# Starkweather Creek Streambank- Existing Condition



6/5/18 Lake Monona ~845.93'



# Starkweather Creek Streambank- Existing Condition



6/16/18 Lake Monona ~846.51'



6/16/18 Lake Monona ~846.51'

# Starkweather Creek Streambank- Existing Condition



6/16/18 Lake Monona ~846.51'



6/16/18 Lake Monona ~846.51'

# Starkweather Creek Streambank- Existing Condition



6/16/18 Lake Monona ~846.51'

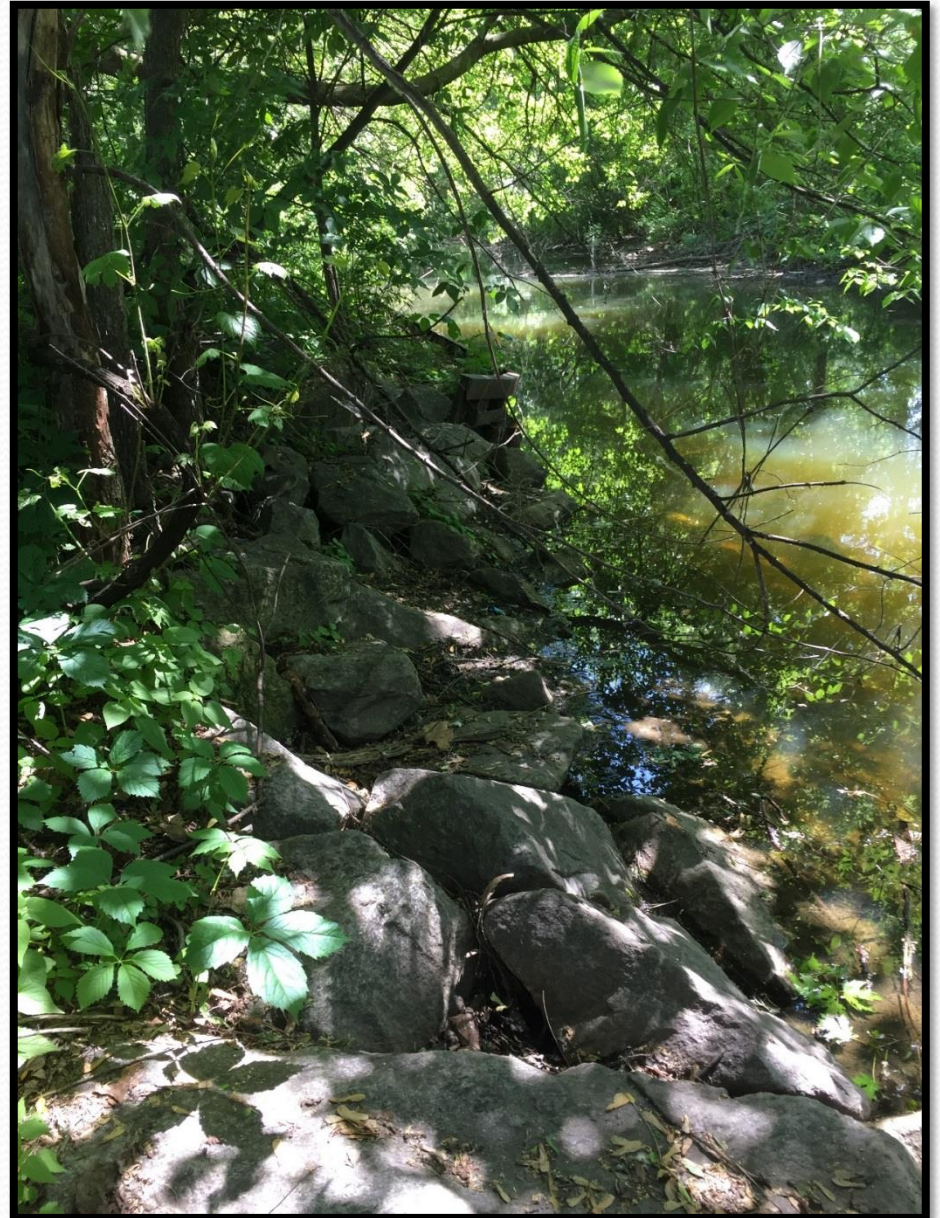


6/16/18 Lake Monona ~846.51'

# Starkweather Creek Streambank- Existing Condition

Existing Riprap near Thorp St

- No bulkhead to remove here



6/5/18 Lake Monona ~845.93'

# Proposed Streambank Changes

- Remove failing steel bulkhead and replace with Rock Riprap-will help connect stream to floodplain
- Move/Redesign Canoe Launch



# Concrete Streambank

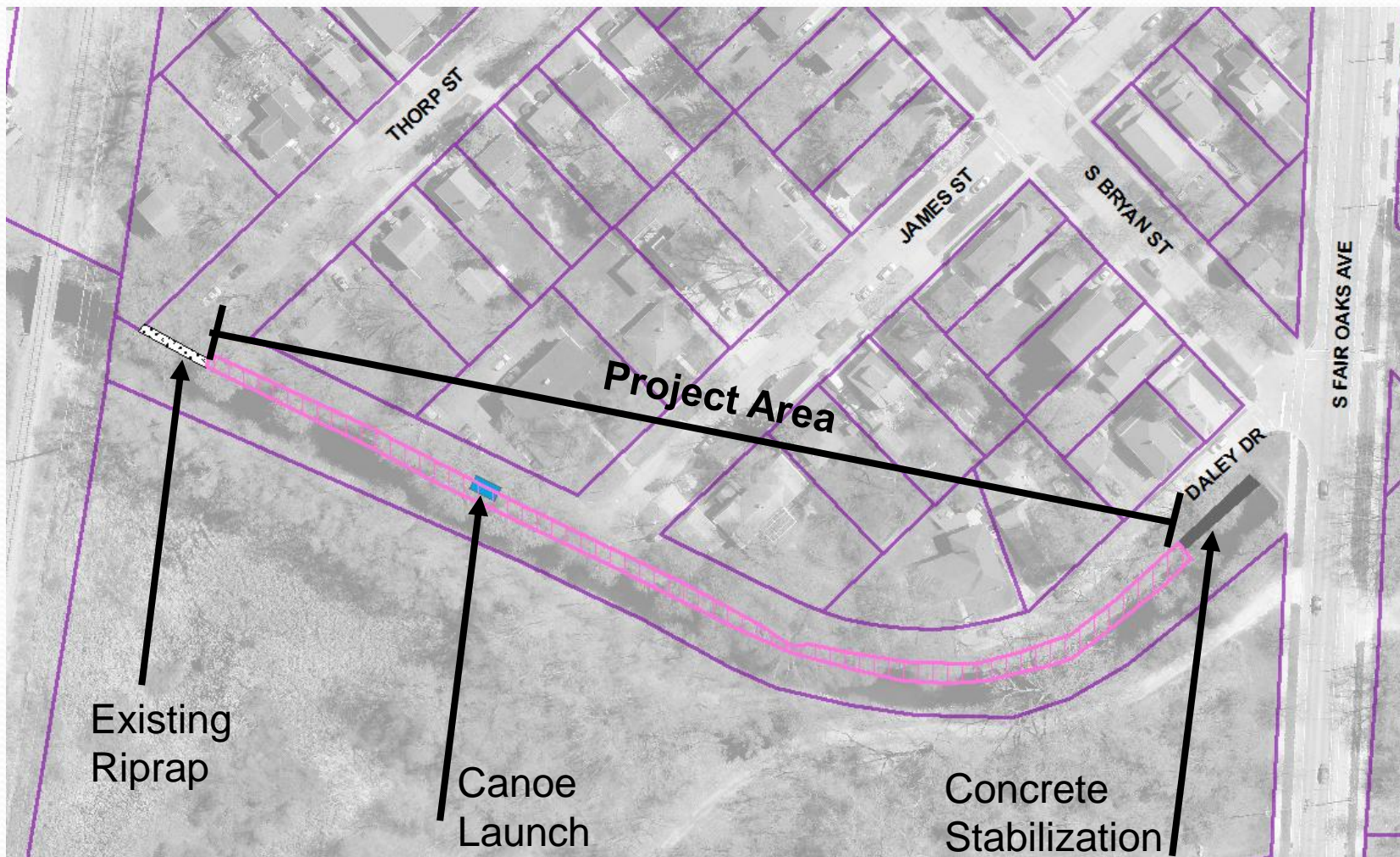
- Likely to be replaced at same time as bridge (not scheduled)
- Basic reinforcement with 2019 project
  - Remove some trees
  - Fill cracks



# Types of Shoreline Stabilization

- **Soft-armor bioengineering**-Plant materials into structures that are designed to withstand wave and ice action
  - Sensitive to long water fluctuations
  - Root structures naturally stabilize the shoreline
- **Rock riprap**-common hard-armor technique which consists of large rocks placed in the water and up along the shoreline
  - Lined with geotextile fabric to prevent wave action from removing soil from behind rocks, causing slumping

# Project Area



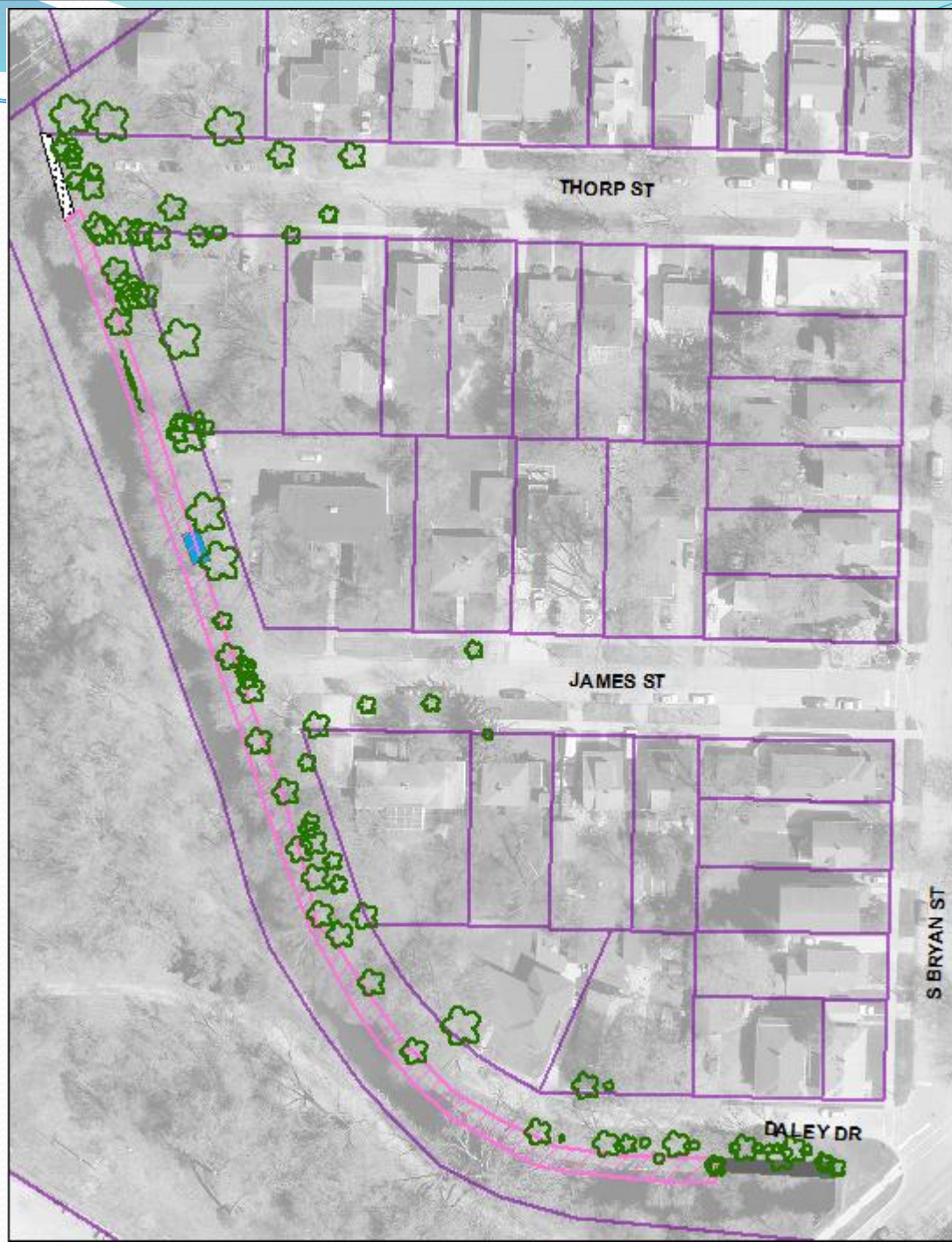




# Trees

- Need to bring in large equipment to remove the bulkhead
- Need to bring in dump trucks of riprap to riprap shoreline
- Trees that will remain on shoreline will be trimmed this winter (2018-2019)
- Existing Trees
  - Mulberry, Box Elder, Ash = non-native (removed)
  - Silver Maples = native, but drop branches and can be a hazard (may remove)
  - Swamp White Oak & River Birch = quality floodplain native species (will try to protect)

# Trees-Existing



# Trees

- City will assess streambank after construction to decide where trees can be planted
  - Native species
  - Floodplain species



*River Birch  
(to protect)*

*Swamp White Oak  
(to protect)*

# Trees

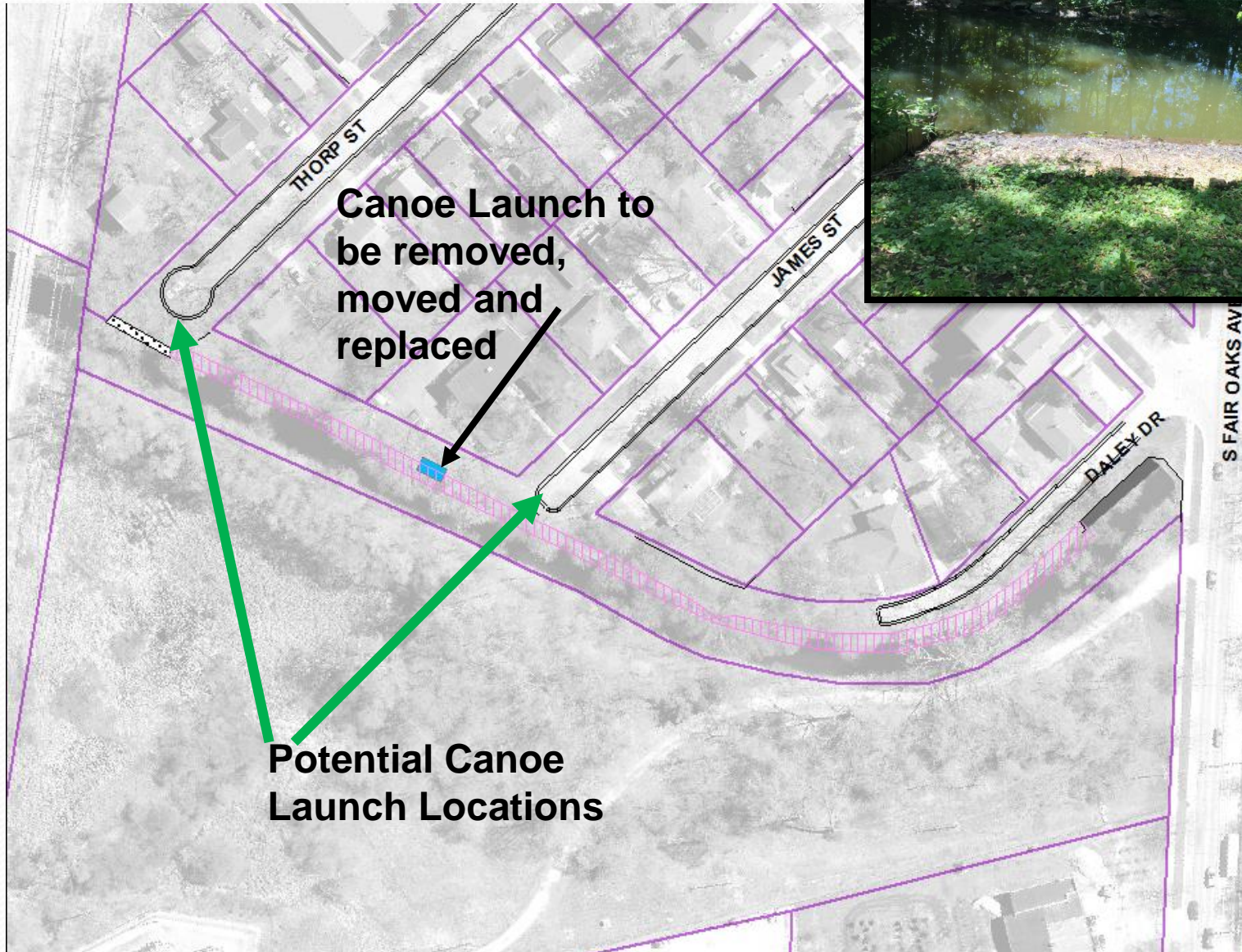


# Canoe Launch

- Current use?
  - Who?
  - For what?
- City proposes to move to more accessible location for entire neighborhood



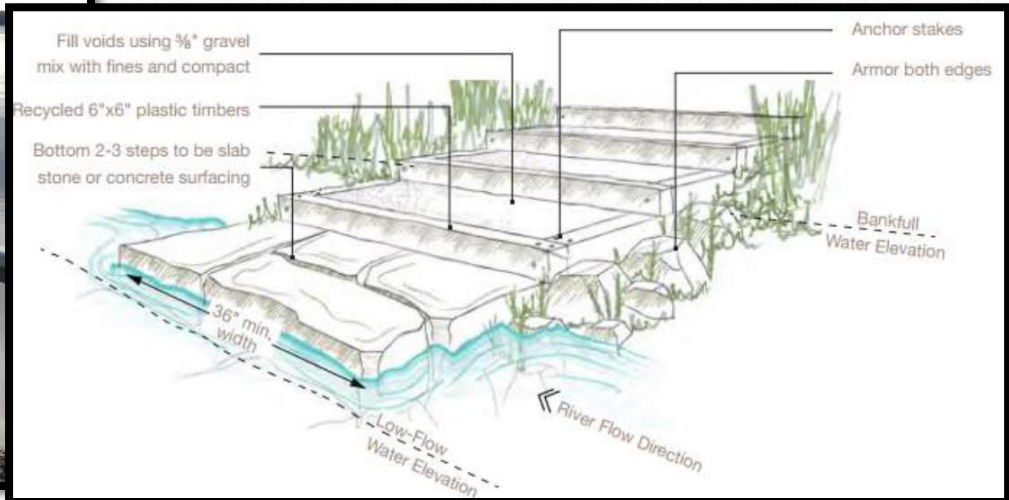
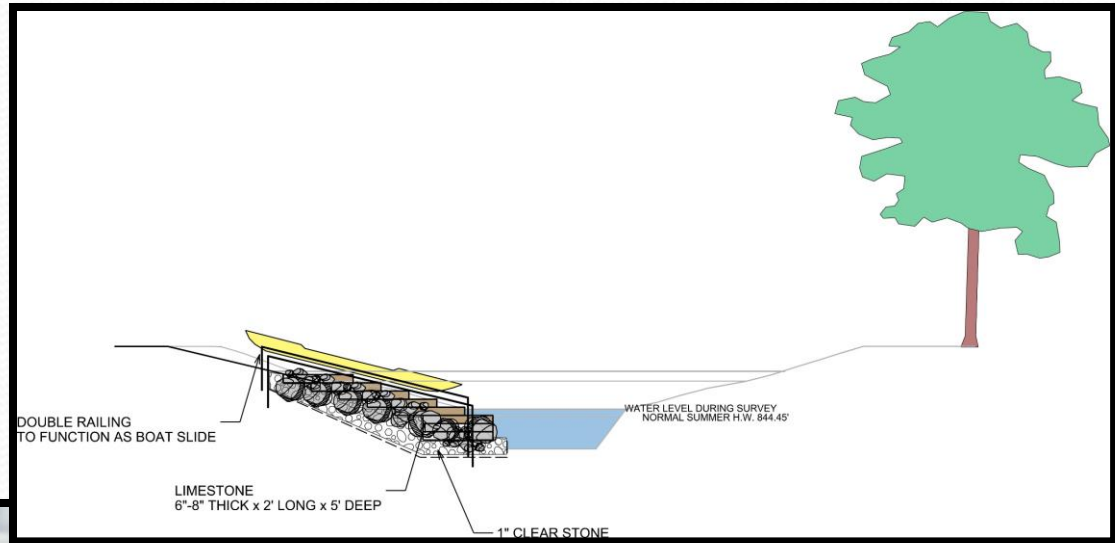
# Canoe Launch



# Canoe Launch Design Possibilities

Dependent on:

- Cost
- Use
- Location





# Proposed Native Sedges and Forbs

- Low perennials and sedges
- Tolerant of fluctuating water and long duration under water
- Planting species to be determined based on elevation from ordinary high water mark



# Anticipated Timeline

- Permitting - fall/winter 2018
- Construction – likely 4-6 weeks June-November
  - Currently planned to be included as part of street reconstruction contract



# COMMENTS OR QUESTIONS?

## Contact Information:

Jojo O'Brien

266-9721

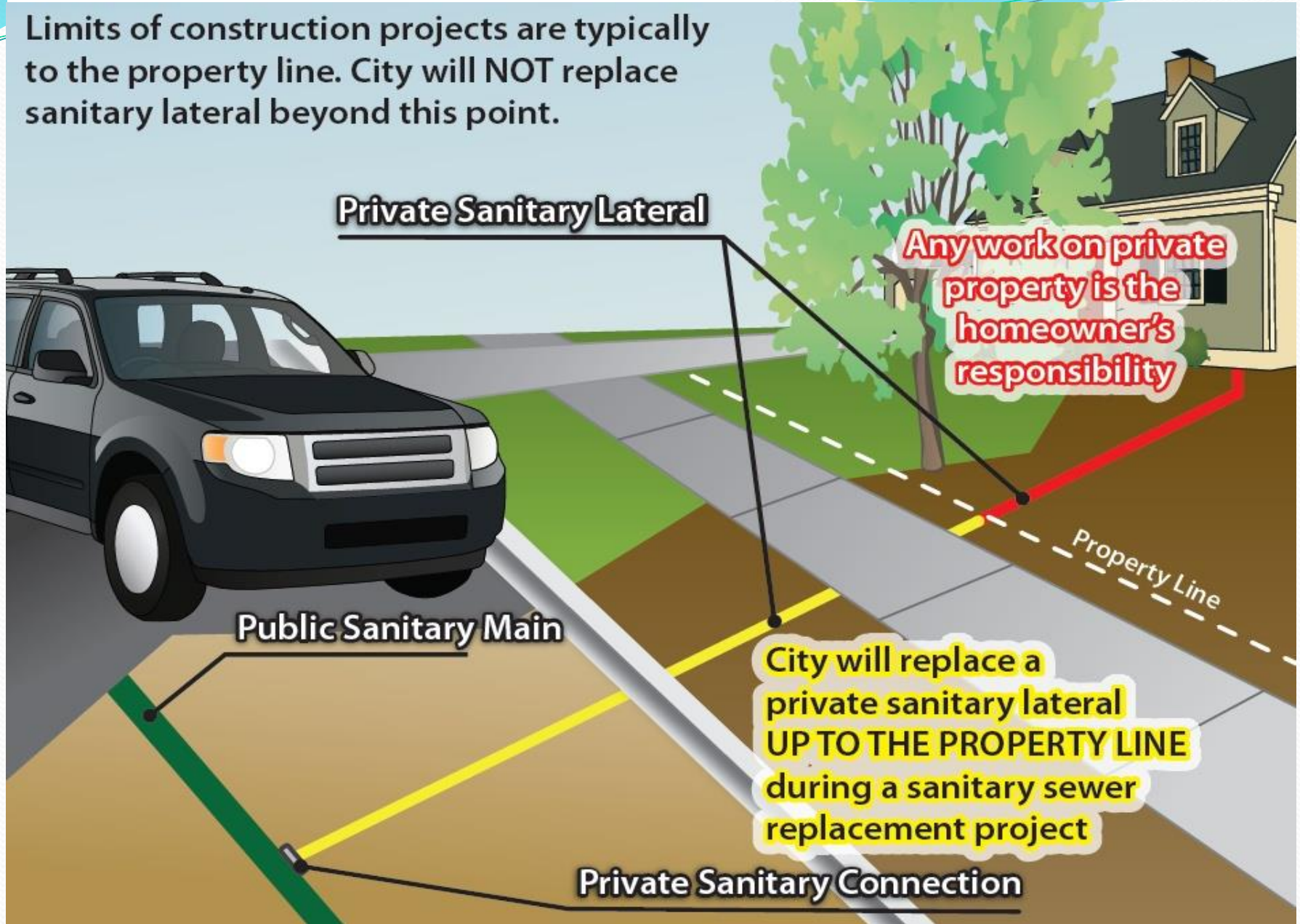
[JOBrien@cityofmadison.com](mailto:JOBrien@cityofmadison.com)

# Review of Project Scope

- Replace water mains and services
- Replace sanitary sewer main & laterals
- Replace sanitary sewer lift station & force main
- Replace storm sewer
- Replace pavement, curb and drive aprons
- Replace sidewalk as needed
- Restore streambank on northeast of Starkweather Creek

# Utility Details – Sewer Lateral

Limits of construction projects are typically to the property line. City will NOT replace sanitary lateral beyond this point.



# Street Design Details

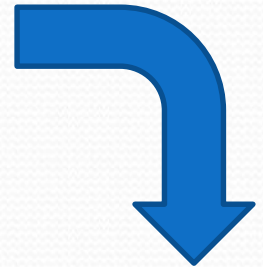
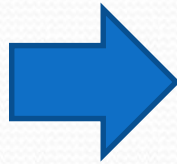
- Reconfigure street ends: James (driveways + lift station), Thorp (cul-de-sac)
- Terrace walk replaced unless prop owner requests that it not be replaced.
- Daley – Typical curb north side, alley (flat) curb south side
- Install 3 speed humps on Bryan

# Forestry

- Estimated tree removals in project limits –12 trees + 5 box elder clumps. Mostly condition-related (5 of them are preemptive ash removals).
- Ash trees planned for removal on this project would be removed regardless of project per the City's Emerald Ash Borer response plan.
- Some illegal plantings, remove as needed.
- Please contact Marla Eddy from forestry directly w/ ?s
- When project is complete, Forestry will evaluate terraces for potential street tree planting spots. (New trees typically planted the next spring.)

# Terrace Rain Gardens

- Optional for those who want them & have suitable terraces (wide, flat, adequate space between driveways/trees, etc., no utility conflicts). If interested, contact Phil Gaebler [pgaebler@cityofmadison.com](mailto:pgaebler@cityofmadison.com), 266-4059 ASAP.
- Helps reduce volume of runoff





# Tentative Schedule

- Mailed estimate assessments last February
  - Contact project engineer for emailed copy
- Advertise for bids on 2/7/19
- Start construction around 4/1/19 (variable)
- Construction expected to last approximately 5 months

# Construction

- Road closed during project, local traffic only
  - Access on dead-ends will be very difficult at times
- Allowed construction hours are 7AM to 7PM
  - Expect the contractor to start promptly at 7AM
- Driveway access
  - Open at most times, but may only be open from one end of the block at times
  - Residential driveways closed up to 20 days
  - Commercial driveways closed for short durations while work is done at the driveway

# Construction

- On Street Parking
  - Consider phasing project to maintain some on-street parking during construction
  - Parking not allowed during the day within the construction zone, but may park over night (7pm to 7am)
- Typically ~2 planned water shut-offs (up to 8 hours but usually about 4 hours) – contractor will notify ahead of time. Occasionally emergency shut-offs if old main breaks.

# Construction - Terraces

- Whole terrace/Right-of-way will get disturbed. Remove any plantings, raised beds, structures, stone landscaping, retaining walls, pavers, railings, etc. that you wish to save from the terrace prior to construction. Contractor will not replace/reinstall these items.

# Mailings you will get from us...

- Estimated assessments + public hearing info for BPW and CC (already sent)
- Driveway forms (please read + fill out + return to us to express your preference!)
  - Contact Jim Wolfe for an emailed copy
- Info letter prior to start of work (save! Will have inspector's contact info + Contractor info)
- Finalized assessment/bill – about a year after work is done
- Feel free to call/contact us anytime w/ questions!

# Additional Project Contacts

- Project Manager - Jim Wolfe, 266-4099  
jwolfe@cityofmadison.com
- Storm & Sanitary Sewer – Matt Allie, 266-4058  
mallie@cityofmadison.com
- Lift Station – Kyle Frank, 266-4098  
kfrank@cityofmadison.com
- Water Utility – Pete Holmgren 261-5530  
pholmgren@madisonwater.org
- Rain Gardens – Phil Gaebler, 266-4059  
pgaebler@cityofmadison.com
- Forestry– Marla Eddy 266-4450  
meddy@cityofmadison.com

# Useful City Websites

- Project website:
  - <http://www.cityofmadison.com/engineering/projects>
- Report flooding
  - [www.cityofmadison.com/reportflooding](http://www.cityofmadison.com/reportflooding)

# Citations

- <http://www.shoreline.msu.edu/shorelinemgt/>