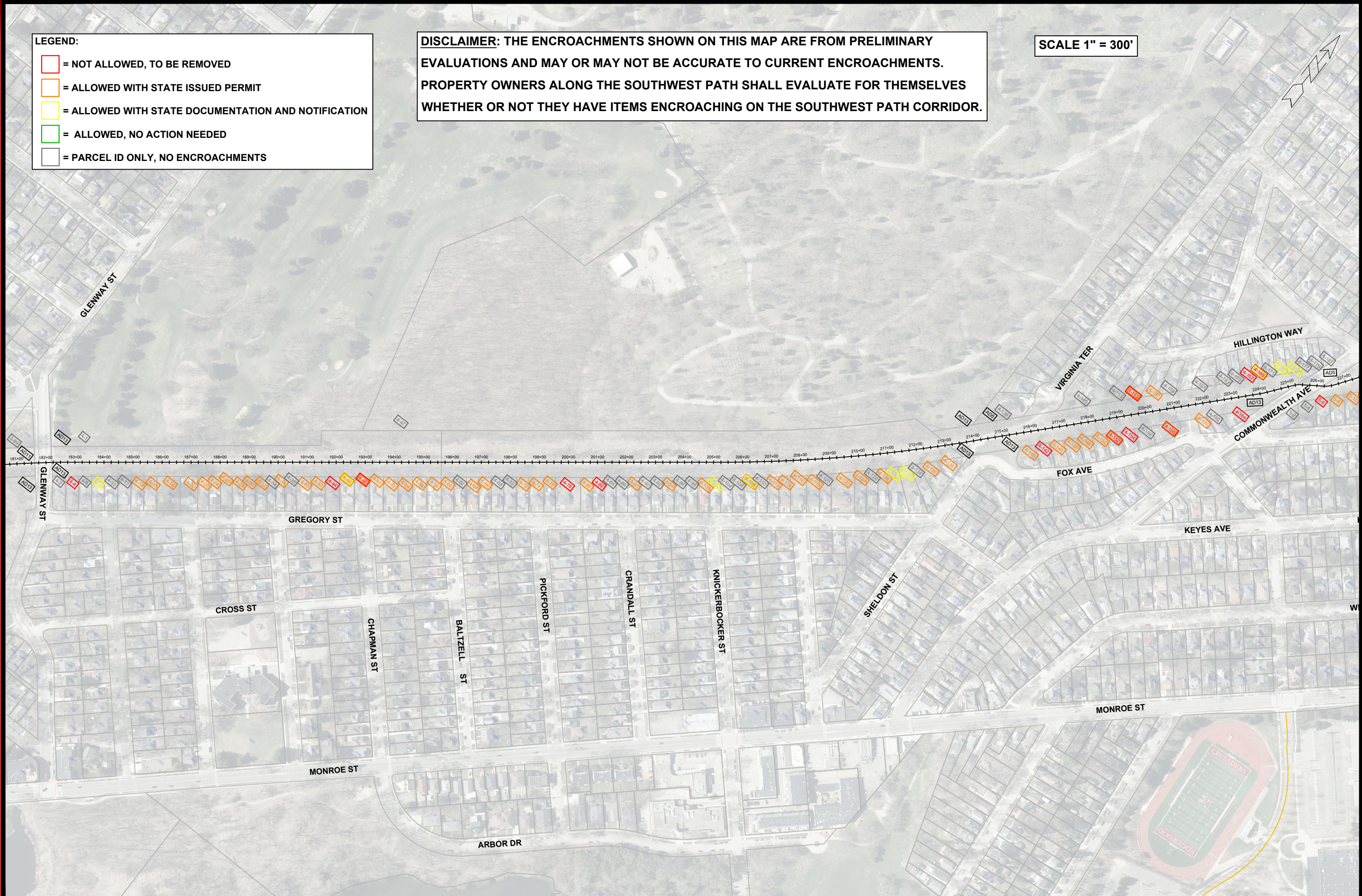


LEGEND:

- = NOT ALLOWED, TO BE REMOVED
- = ALLOWED WITH STATE ISSUED PERMIT
- = ALLOWED WITH STATE DOCUMENTATION AND NOTIFICATION
- = ALLOWED, NO ACTION NEEDED
- = PARCEL ID ONLY, NO ENCROACHMENTS

DISCLAIMER: THE ENCROACHMENTS SHOWN ON THIS MAP ARE FROM PRELIMINARY EVALUATIONS AND MAY OR MAY NOT BE ACCURATE TO CURRENT ENCROACHMENTS. PROPERTY OWNERS ALONG THE SOUTHWEST PATH SHALL EVALUATE FOR THEMSELVES WHETHER OR NOT THEY HAVE ITEMS ENCROACHING ON THE SOUTHWEST PATH CORRIDOR.

SCALE 1" = 300'



MARK	DESIGNED BY	REVISION	DATE	BY
###	###	###	###	###
###	###	###	###	###
###	###	###	###	###
###	###	###	###	###

Scale: 1:300
Date: 7/27/2023 11:39 AM
P-4

SOUTHWEST PATH ENCROACHMENTS - GLENWAY ST TO COMMONWEALTH AVE
 #####
 #####
 CONTRACT NO: #####
 F:\Encommon\Projects\Southwest Bike Path\Aaron's Files\SWPathEncroachments.dwg

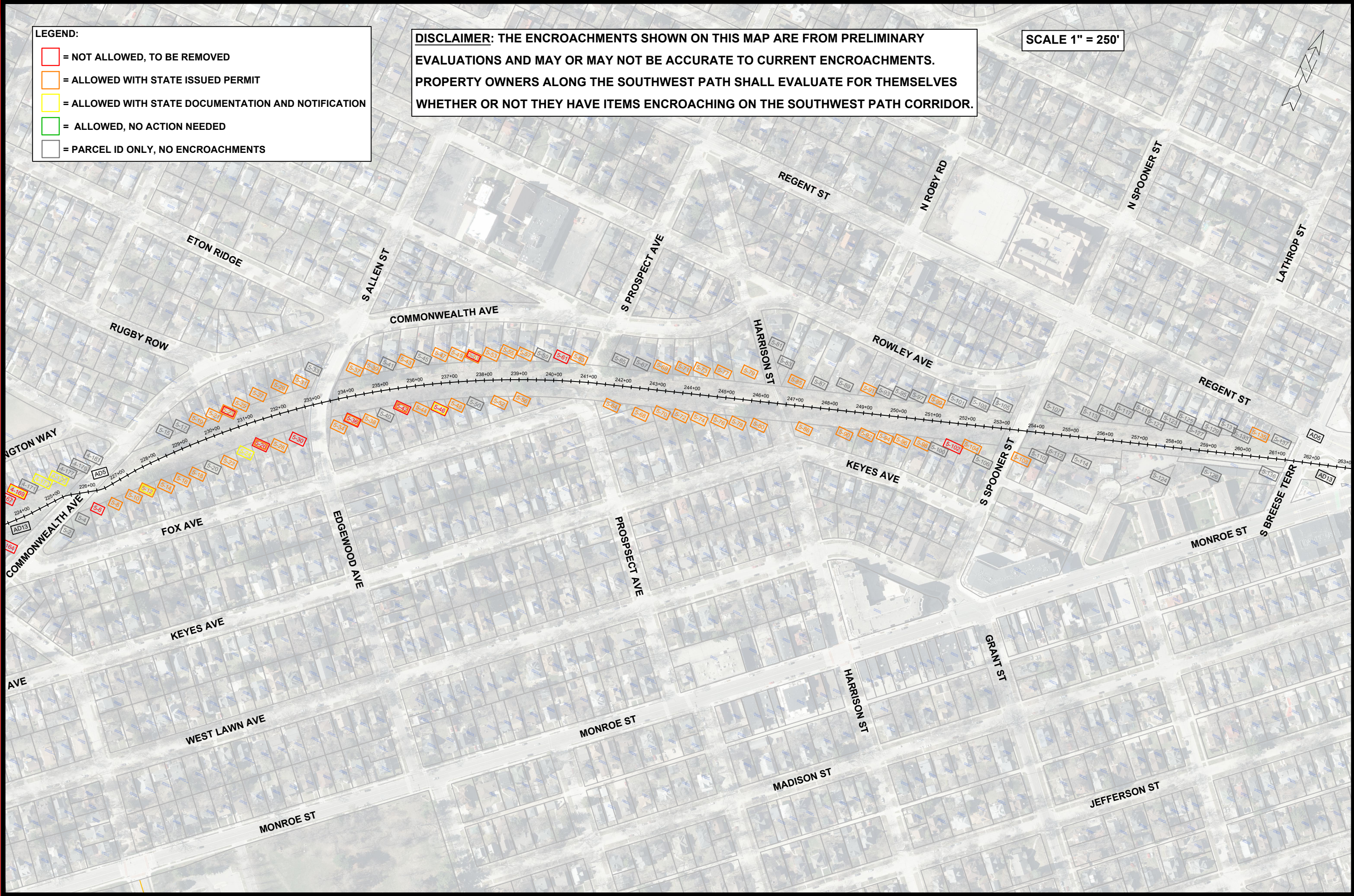


LEGEND:

- = NOT ALLOWED, TO BE REMOVED
- = ALLOWED WITH STATE ISSUED PERMIT
- = ALLOWED WITH STATE DOCUMENTATION AND NOTIFICATION
- = ALLOWED, NO ACTION NEEDED
- = PARCEL ID ONLY, NO ENCROACHMENTS

DISCLAIMER: THE ENCROACHMENTS SHOWN ON THIS MAP ARE FROM PRELIMINARY EVALUATIONS AND MAY OR MAY NOT BE ACCURATE TO CURRENT ENCROACHMENTS. PROPERTY OWNERS ALONG THE SOUTHWEST PATH SHALL EVALUATE FOR THEMSELVES WHETHER OR NOT THEY HAVE ITEMS ENCROACHING ON THE SOUTHWEST PATH CORRIDOR.

SCALE 1" = 250'



SOUTHWEST PATH ENCROACHMENTS - COMMONWEALTH AVE TO REGENT ST

MARK	REVISION	DATE	BY
###	###	###	###
###	###	###	###
###	###	###	###

Designed By: ### Date: 7/2/2023 11:37 AM Scale: 1"=250'

CONTRACT NO: #####

P-5

F:\Common\Projects\Southwest Bike Path\Aaron's Files\SWPathEncroachments.dwg

P-5