



Public Involvement Meeting #1

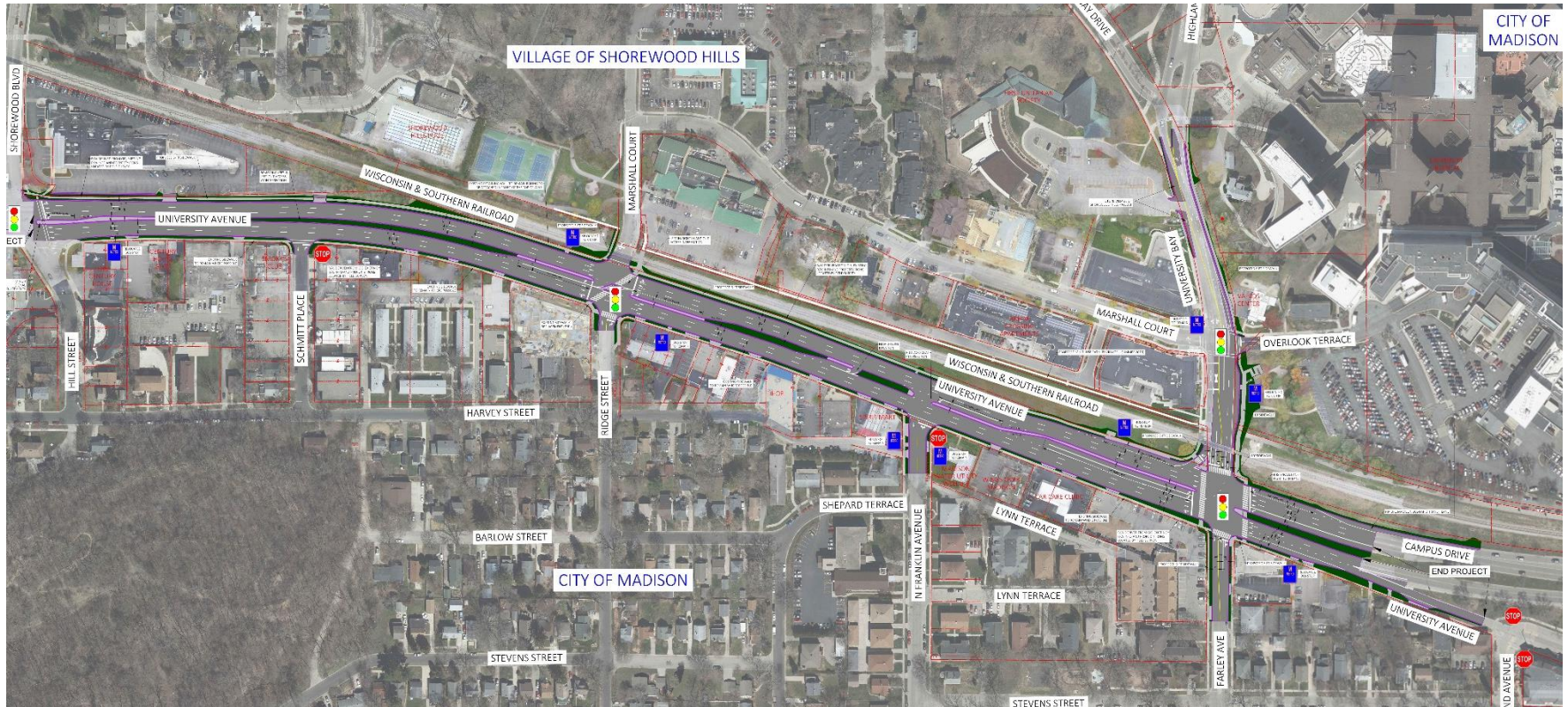
University Avenue

(Shorewood Blvd – University Bay Dr)

Public Involvement Meeting Outline

6:00 – 6:30	Open House
6:30 – 7:15	Welcome & Project Presentation
7:15 – 7:45	Presentation Q & A
7:45 – 8:00	Open House

Project Overview



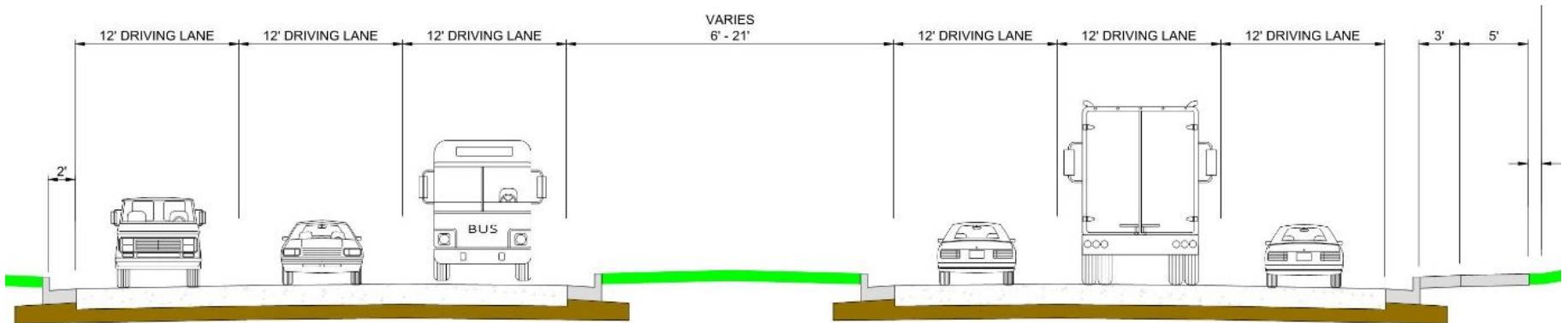
Project Needs



- Poor Pavement Condition
- Substandard Roadway Geometrics
- Lack of Bicycle Accommodations
- Absence of Pedestrian Facilities
- Safety and Operations inefficiencies at Intersections
- Pedestrian/Bicycle Crossing on University Bay Drive of Campus Drive Bike Path
- Insufficient stormwater drainage collection and conveyance

University Ave. – Typical Section

Existing Typical Section



- 3-12' Driving Lanes in Each Direction
- Sidewalk only on south side
- 52,000 vehicles per day

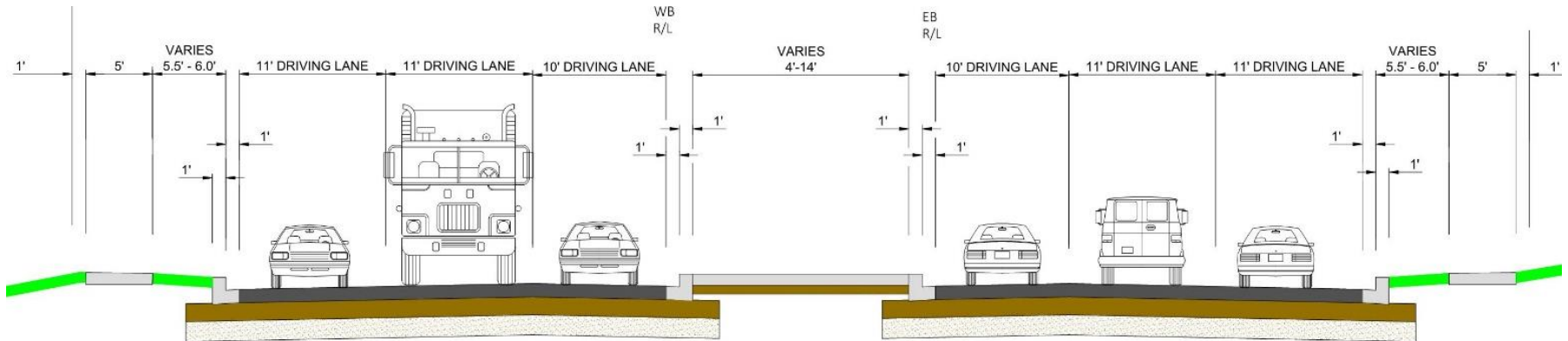
University Ave. – Typical Section

Proposed – Alternative Considerations

- 105-ft to 106-ft Right of Way Width
- Maintain 6 Traffic Lanes, Median & Left Turn Lanes
- Bicycle Lanes
- New Sidewalk on North Side
- Multi-use Path
- Future Bus Rapid Transit Route
- National Highway System
- Enhance user experience

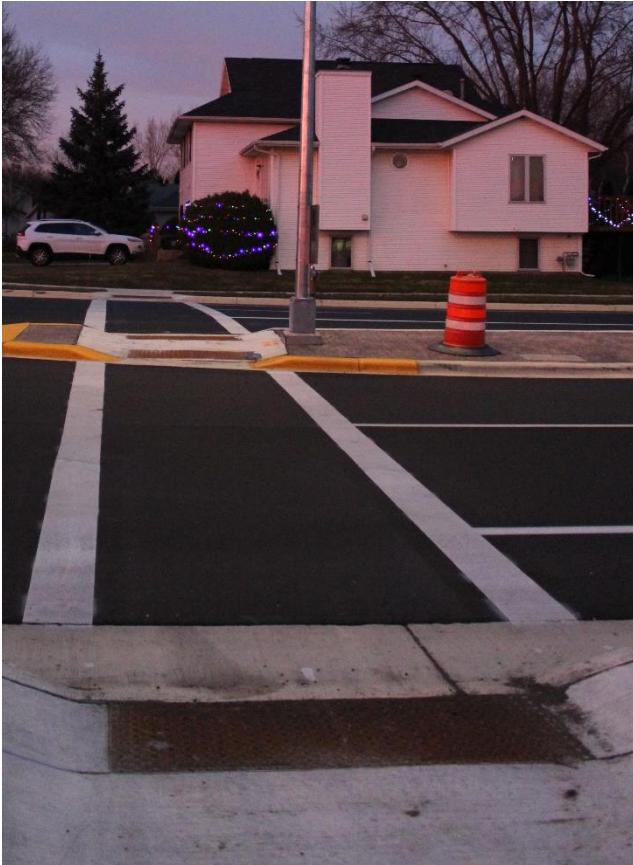
University Ave. – Typical Section

Proposed (Current 30% Design)



- 2 – 11' & 1 – 10' Driving Lanes in Each Direction
- New Sidewalk on North Side
- Wider Terraces

Proposed Improvements



Pedestrian Improvements

- New Curb Ramps
- Widen Terrace
- New North Side Sidewalk
- Continental Crosswalk Marking

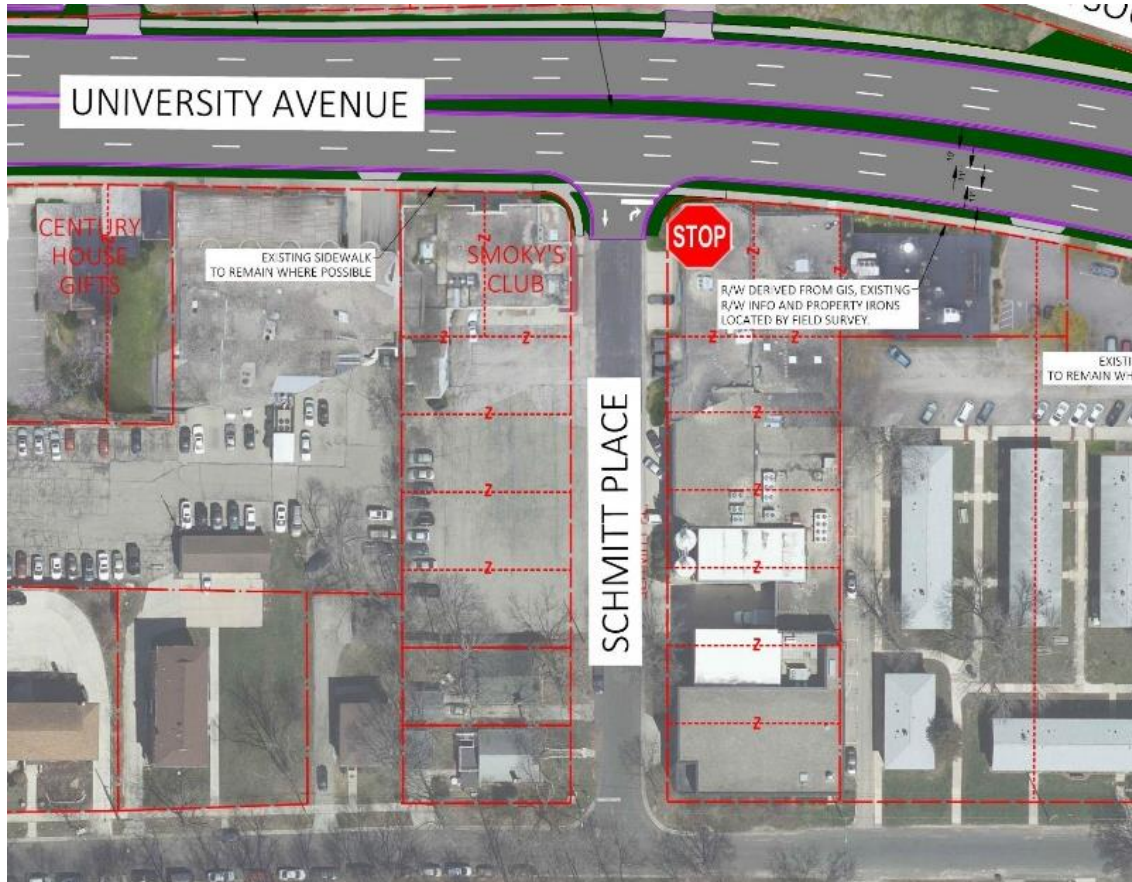
Proposed Improvements



Safety and Operations Improvements

- New Traffic Signals
- Westbound crest curve improvement
- Dual Eastbound Left Turn at University Bay Drive
- Leading Pedestrian Interval

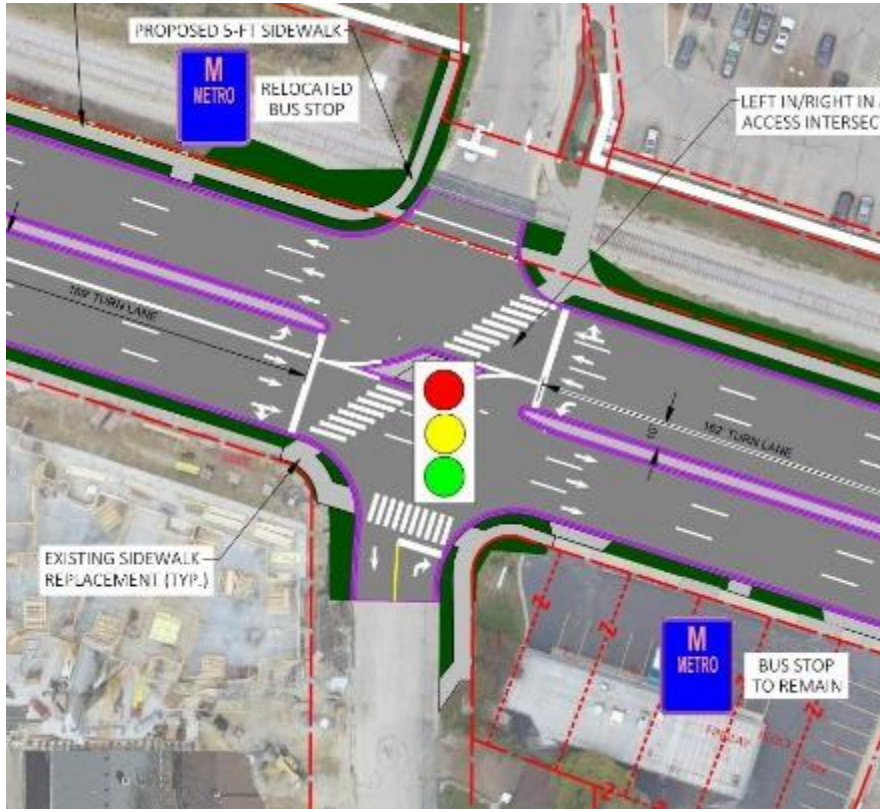
Proposed Improvements



Schmitt PI – Draft

- Narrow Exist Median
- R/W Pinch Point
- Poor Sight Distance
- Close Median
- Left Turn In and Out are prohibited

Proposed Improvements



Marshall Ct/Ridge St – Draft

- Maintain Configuration – Left turn from Marshall Ct. and Ridge St. Prohibited
- University Ave. Left Turn Lanes Lengths maintained
- Sidewalk on North Side (Access to Multi-Use Path)
- Removed SE Crossing to Median
- Far Side WB Bus Stop

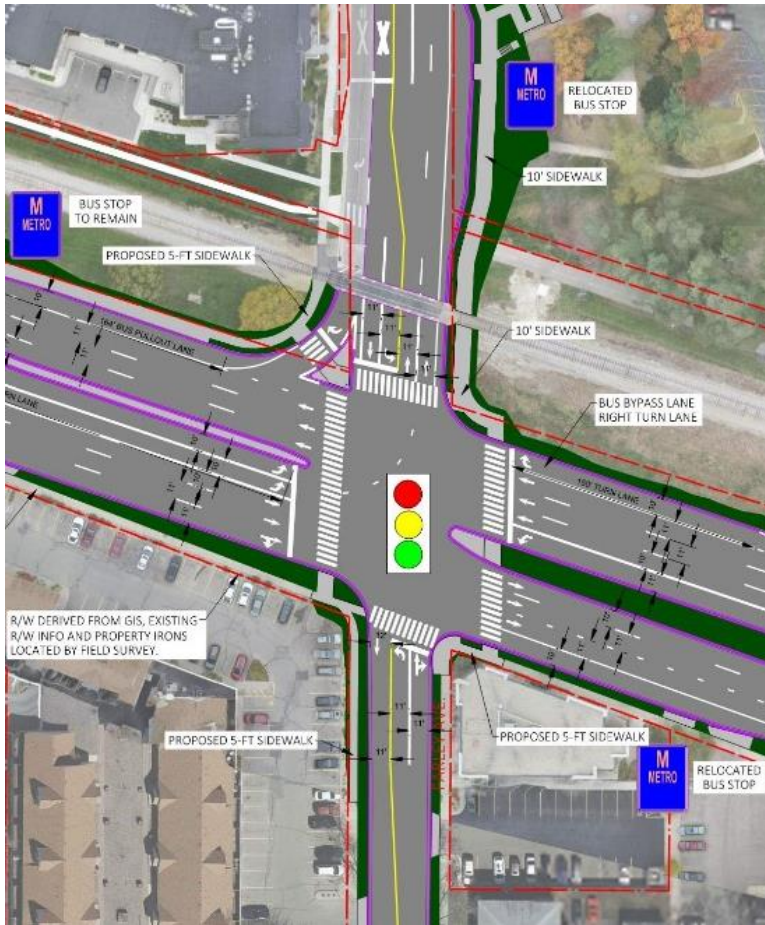
Proposed Improvements



N. Franklin Ave. – Draft

- Maintain Left Turn Lane Lengths
- U-Turn near intersection
- Remove University Avenue Pedestrian Crossing

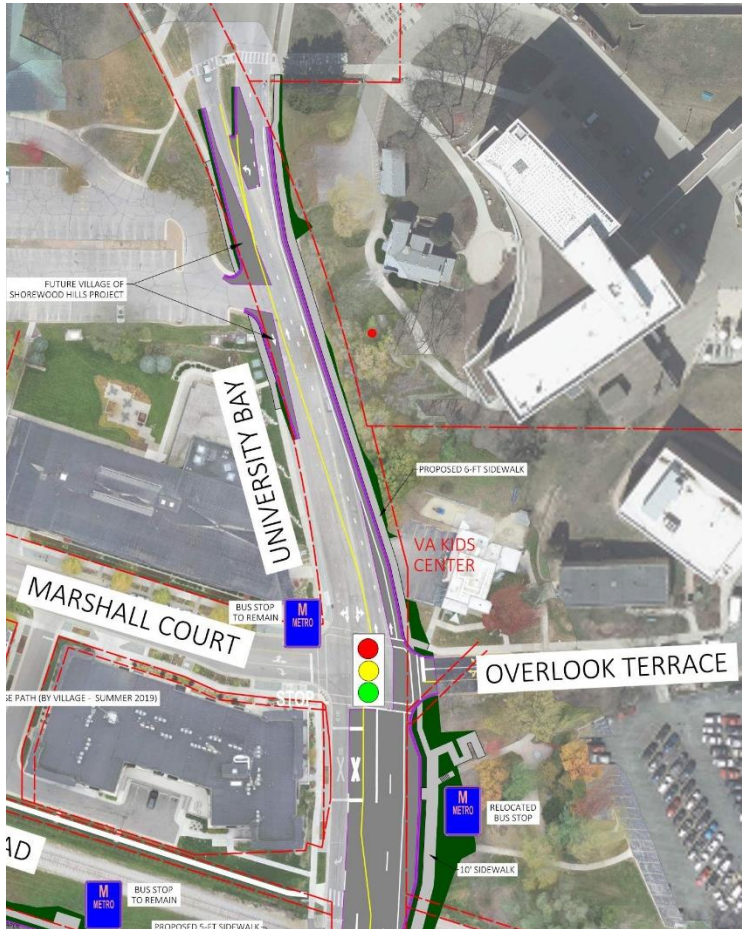
Proposed Improvements



University Bay Dr./Farley Ave. – Draft

- Dual EB Left Turn Lanes
- Far side EB Bus Pullout
- Far side WB Bus Pullout to remain
- WB Bus Bypass Lane/Right Turn Lane
- Improved East Side Crossing

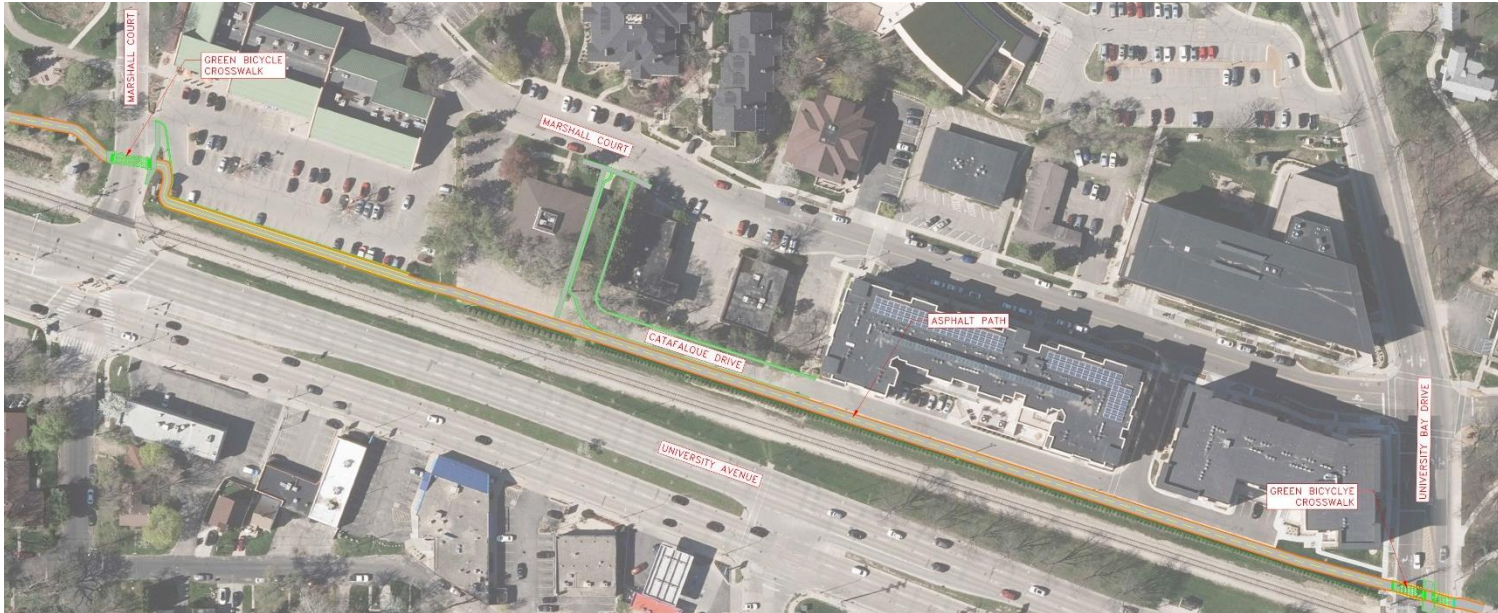
Proposed Improvements



University Bay Drive – Draft

- Two Northbound Lanes
- Northbound Bicycle Lane & Southbound Shared Lane
- Northbound Bus Pullout
- 10-ft Sidewalk on east side from University Bay Dr. to Overlook Terrace
- New 6-ft sidewalk on east side from Overlook Terrace to Children's Hospital
- Additional Traffic Signal at Overlook Terrace

Proposed Improvements

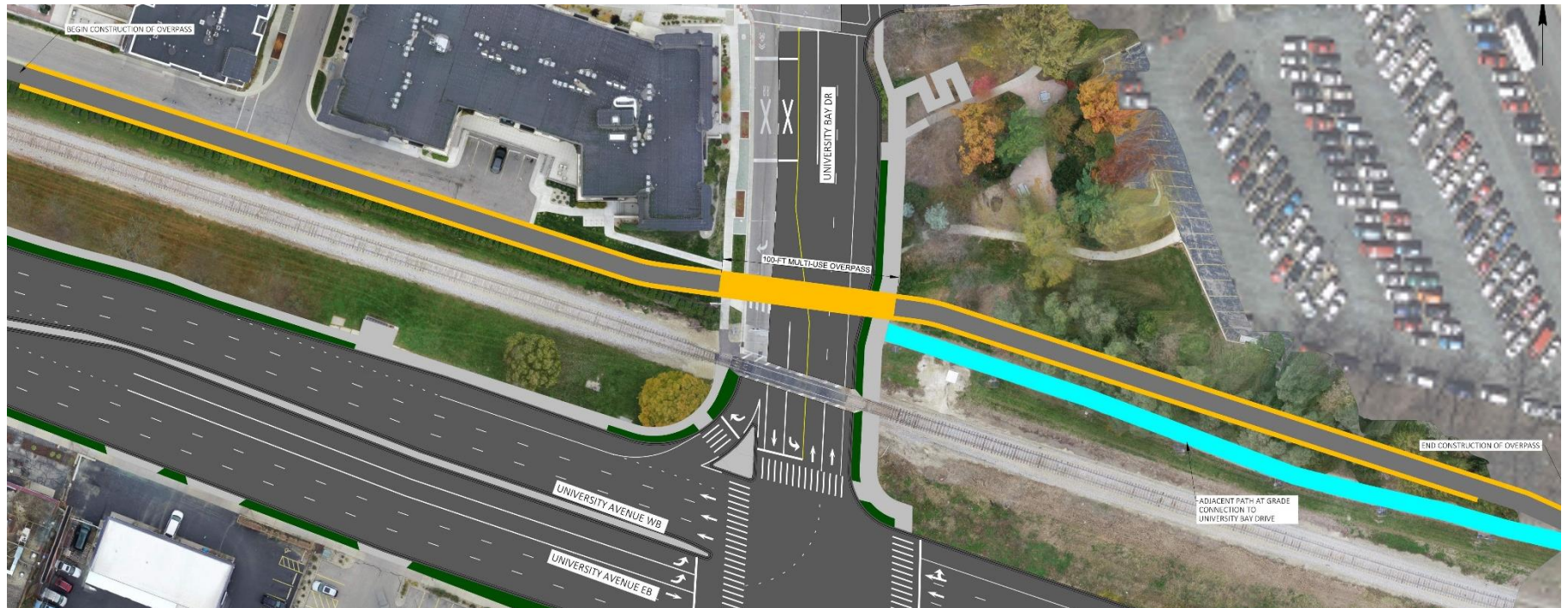


Village of Shorewood Hills Multi-use Path Project

- Path Connection Between Marshall Court and University Bay Dr.
- At-grade Crossing of University Bay Drive
- Construction Scheduled for Summer 2019

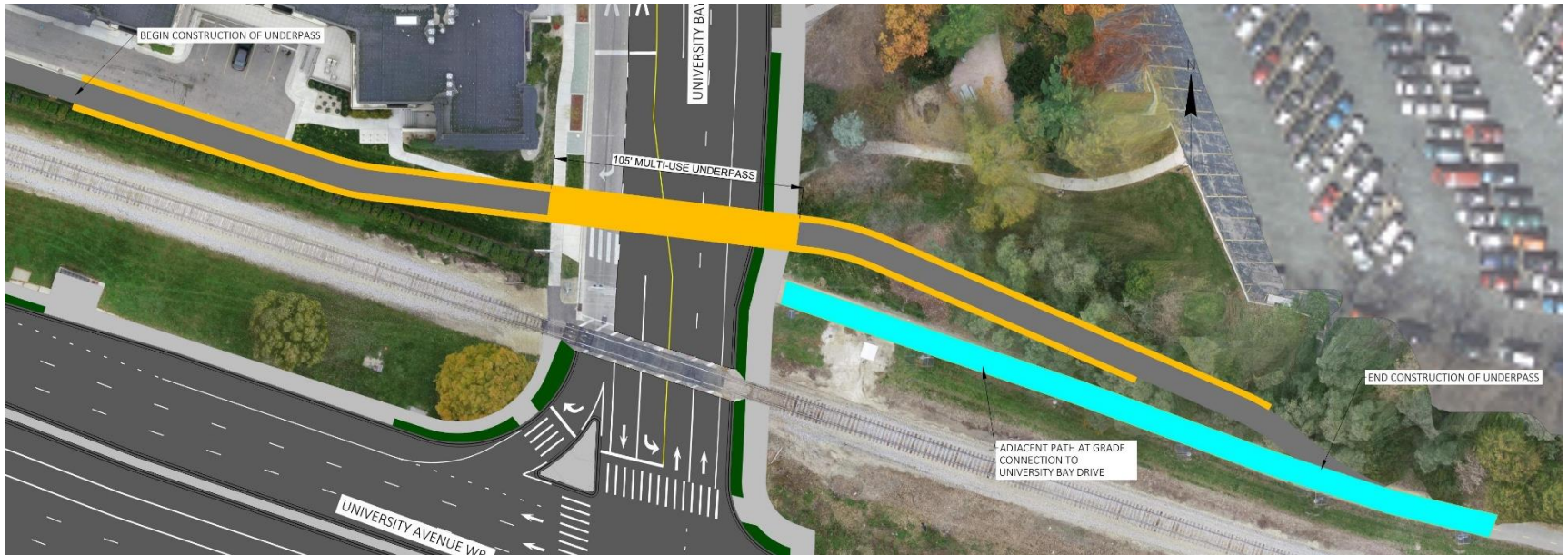
Proposed Improvements

University Bay Drive – Possible Grade Separated Overpass Bike/Ped Crossing



Proposed Improvements

University Bay Drive – Possible Grade Separated Underpass Bike/Ped Crossing



Metro Transit

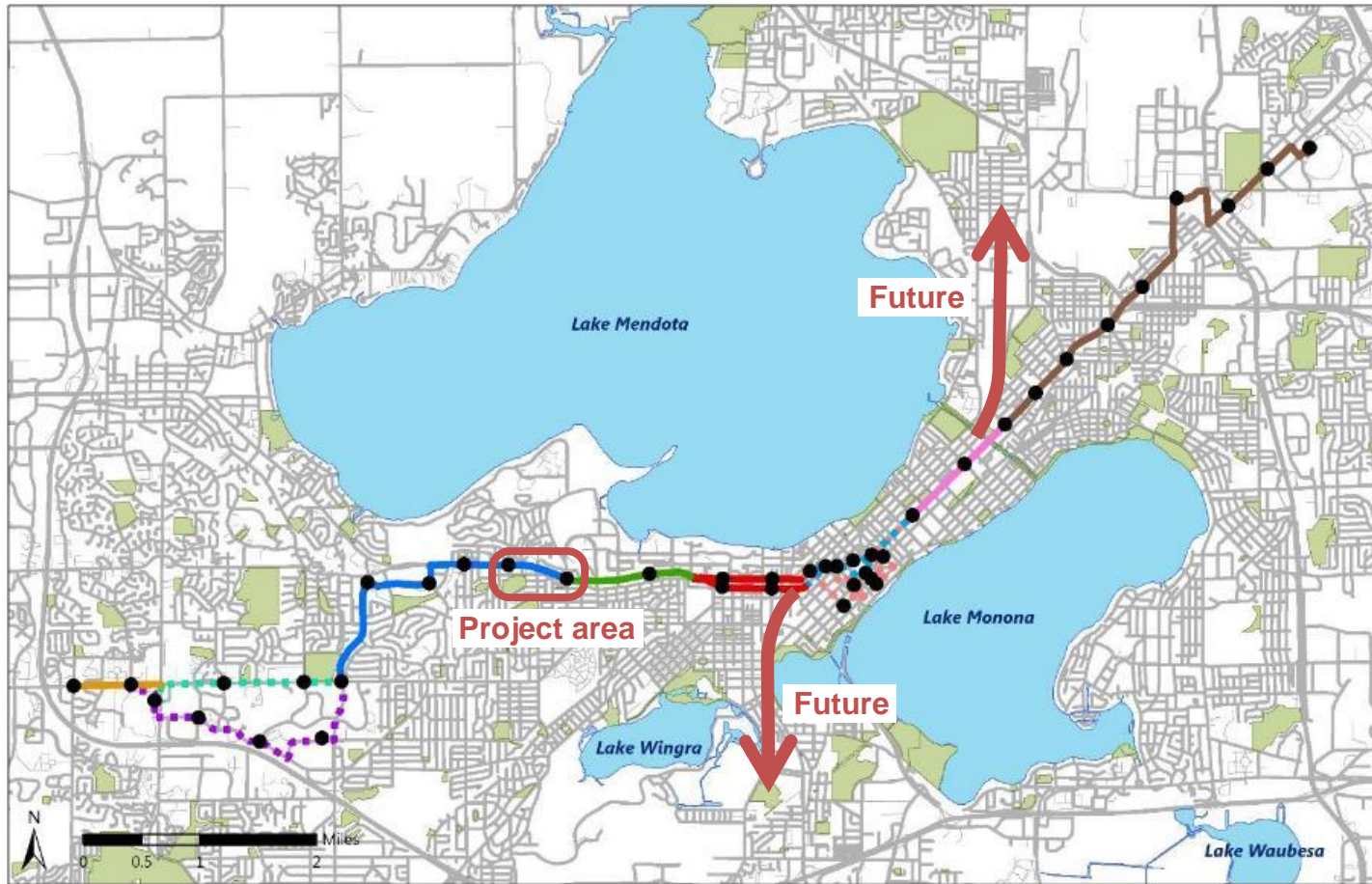
Bus Accommodations

- Bus Stop Pull outs
 - EB University Ave. after Farley Ave.
 - University Bay Drive NB after railroad tracks
- Bus Stops moved to far side
 - WB University Ave. after Marshall Court
 - EB University Ave. after Hill Street
- Bus Stops to remain in place
 - WB University Ave. Pull out after University Bay Dr.
 - EB University Ave. after Ridge Street
 - N. Franklin Ave

Madison Bus Rapid Transit (BRT)

- University Ave. is part of the first planned route between East Towne and West Towne
 - Planned stations at University Bay Drive and Shorewood Boulevard
- Operate in mixed traffic with limited stops, signal priority, and off-board fare collection
- Westbound bypass lane queue skip at University Bay
- Project will accommodate future shoulder running on Campus Drive for BRT buses when traffic is heavy
- Coordination with BRT Study Team is ongoing

Madison Bus Rapid Transit (BRT)



University Avenue Watershed

University Avenue Watershed

- Update existing local storm sewer structures and inlets
- Conducting feasibility study on large diameter storm pipes/tunnel options
 - Feasibility study to be completed in July; design alternatives will be evaluated
- Willow Creek Watershed Study in the City of Madison will kick off July/August 2019
 - Completed Concurrently with University Avenue design

Project Schedule

Spring – Fall 2019

- Complete University Bay Dr. Underpass/Overpass Feasibility Study
- Environmental Document
- Preliminary Plans
- Right of Way Plat
- 2nd Public Involvement Meeting

Winter 2019/2020 – Summer 2020


- Final Plans
- Purchase Right of way
- 3rd Public Involvement Meeting

Spring 2021 – Fall 2021

- Construction

Project Website & Notifications

University Avenue



Project Details

- Project Type: [Road Construction](#)
- Location(s):
 - 2737 University Avenue
 - Madison, WI 53705
- Area: West
- Aldermanic District(s): [District 5](#)
- Estimated Schedule: 04/01/2021 to 11/01/2021
- Project Status: In Design

Project Contact:

Glen Yoerger
(608) 261-9177
gyoerger@cityofmadison.com

[Active Project List](#)

Subscribe to Email List:

Project Details
University Ave is scheduled for reconstruction from Shorewood Boulevard/Hill St to University Bay Drive/Farley Ave. A map of the project limits can be found here: [Project Limits PDF](#)

The City of Madison is jointly participating with the Village of Shorewood Hills on the design and construction. The project includes reconstruction of pavement, curb & gutter, sidewalk as necessary, street lighting, traffic signals, water main, sanitary sewer and storm sewer. Design alternatives will include analysis to try and improve pedestrian & bicycle connectivity, bus rapid transit initiatives and stormwater drainage.

Schedule
Construction is scheduled for 2021

Public Meetings
The City of Madison and Village of Shorewood Hills will host a Public Involvement Meeting regarding the project on June 13th at 6:00 pm at the UW Credit Union Corporate Headquarters, 3500 University Avenue. The meeting will be an open house format with a formal presentation beginning at 6:30 pm. The public is encouraged to attend the meeting and offer ideas and comments on the design concepts for the project.

Map **Satellite**

Last Updated: 05/31/2019

UPDATE: A Public Information Meeting has been scheduled for June 13th. See details below.

<https://www.cityofmadison.com/engineering/projects/university-avenue>

<https://www.facebook.com/CityOfMadisonEngineering/>

Please Complete and Return Comment Forms by July 3, 2019



Project Contacts

Glen Yoerger, P.E.

City of Madison Engineering

(608) 261-9177

gyoerger@cityofmadison.com

Mike Bakalars, P.E.

KL Engineering, Inc.

(608) 663-1218

mbakalars@klengineering.com

Alder Shiva Bidar

City of Madison Common Council

district5@cityofmadison.com

Karl Frantz

Village of Shorewood Hills

(608) 267-2680

kfrantz@shorewood-hills.org

Hannah Mohelnitzky

City of Madison Engineering

Public Information Officer

(608) 242-6003

hmoelnitzky@cityofmadison.com

Presentation Q & A

