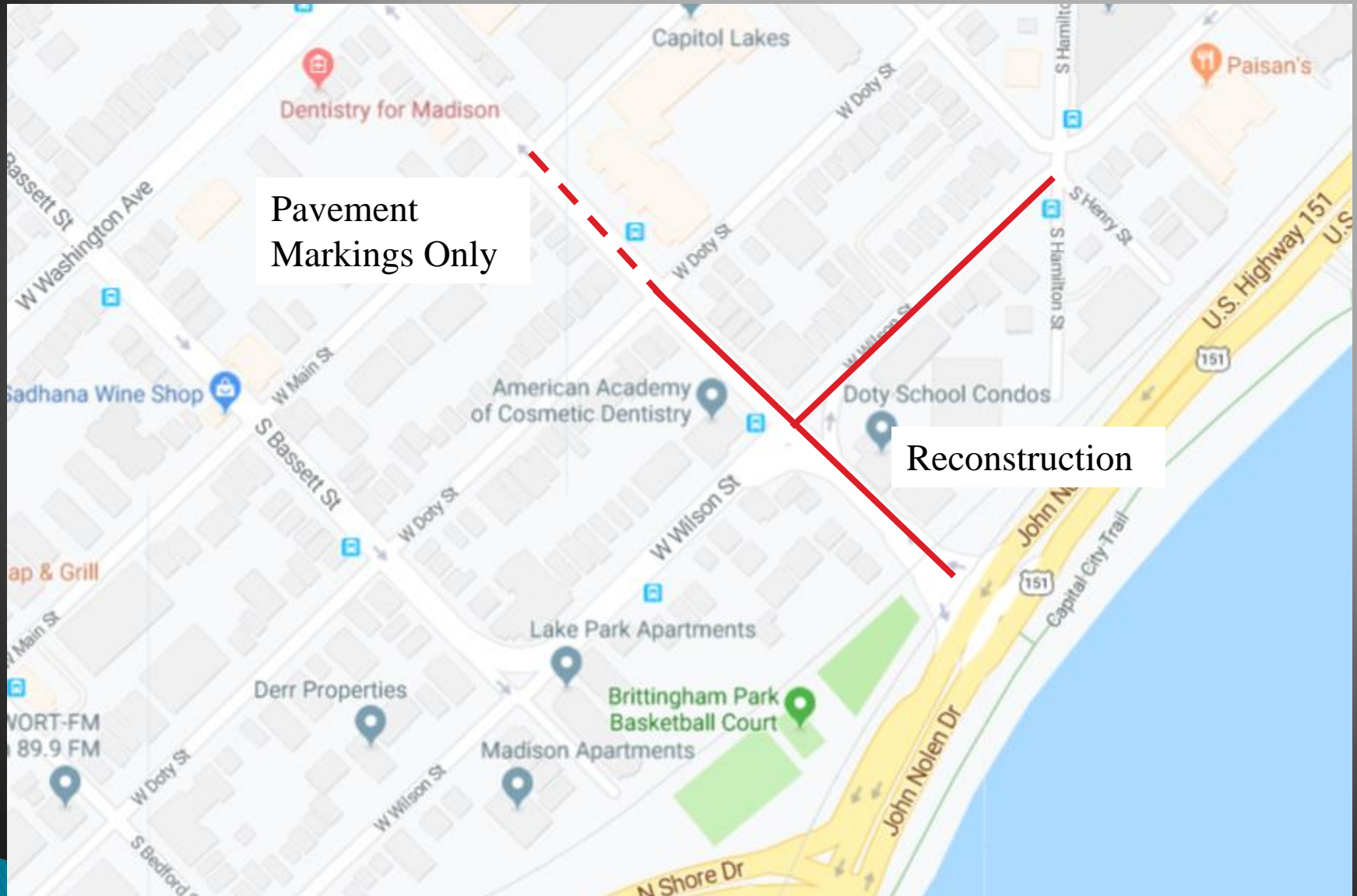


# W. Wilson St. & S. Broom St. Public Informational Meeting

May 20, 2019

# Location



Pavement  
Markings Only

Reconstruction

# Project Scope

- ▶ W. Wilson St.
  - Replace utilities (water, sanitary)
  - Replace pavement
  - Replace curb & sidewalk as necessary
  - Street lighting
- ▶ S. Broom St.
  - Replace curb and pavement
  - Replace sanitary & water (Wilson – Doty)
  - Bike facilities, including markings Doty – Main
  - Street lighting

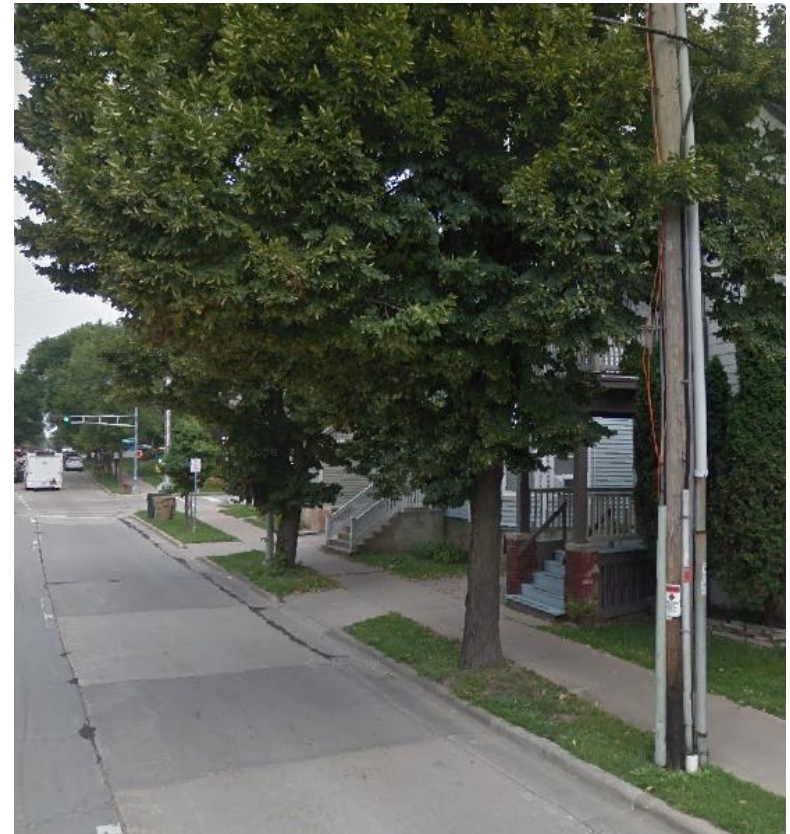
# Tree Protection & Removals



- ▶ Tree removals on W. Wilson
  - 9 ash tree removals (302, 304, 312, 324, 329, 332, 342, 350)
  - Ash trees have not been treated
- ▶ 3 planned removals on Broom St
  - 1 due to health, 2 due to proposed shared path

# Tree Protection & Removals

- ▶ Design around trees as much as possible
- ▶ Protect trees that are to remain
- ▶ Terrace space on S. Broom St.



# Tree Planting

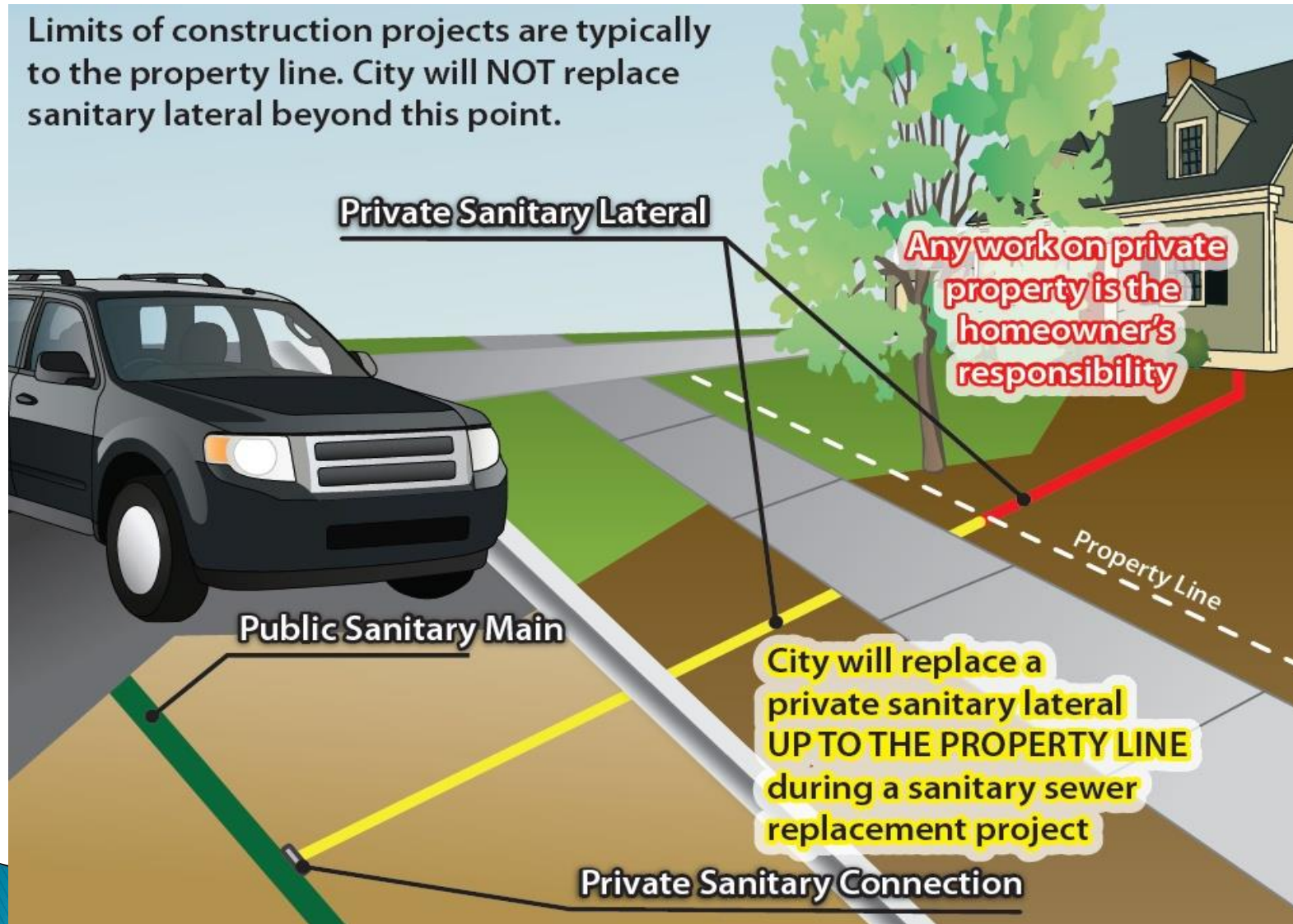
- ▶ Engineering will review the project with Forestry to identify locations for new tree plantings
- ▶ Coordinate design with Forestry to maintain planting locations where possible
- ▶ Following the project, City Forestry will plant new trees

# City Utility Work – Sanitary

- ▶ Existing Sanitary Sewer
  - W. Wilson St.: 6” clay pipe, installed in 1905
  - S. Broom (John Nolen–Wilson): 10” PVC, from 1995
  - S. Broom (Wilson–Doty): 12” clay pipe, from 1906
- ▶ Proposed Sanitary Sewer Work
  - Replace main on W. Wilson & on Broom between Wilson & Doty
  - Replace laterals to the property line
  - Leave existing main between John Nolen & Wilson

# City Utility Work – Sanitary

Limits of construction projects are typically to the property line. City will NOT replace sanitary lateral beyond this point.





# City Utility Work – Water Main

- ▶ Existing water mains
  - W. Wilson St.: 4” cast iron from 1882 (breaks)
  - S. Broom (John Nolen–Wilson): 2” copper from 1995
    - Serves few properties
  - S. Broom (Wilson–Doty): 4” cast iron from 1915
- ▶ Proposed water main work
  - Replace main on W. Wilson & on Broom between Wilson & Doty
  - Reconnect services to the new mains
  - Leave existing main between John Nolen & Wilson

# City Utility Work – Storm Sewer

- ▶ Limited storm sewer on W. Wilson, only at intersections
- ▶ Storm sewer on Broom was installed in 1995
- ▶ Replace inlets to match into new curb
- ▶ (Re)Connect any private storm sewer discharges to the storm sewer system

# Street Details

- ▶ Existing Street: W. Wilson St.
  - Asphalt pavement rated 4 out of 10
  - Existing curb and gutter rated 7 out of 10
  - 3 travel lanes (2 inbound), with no bike facility



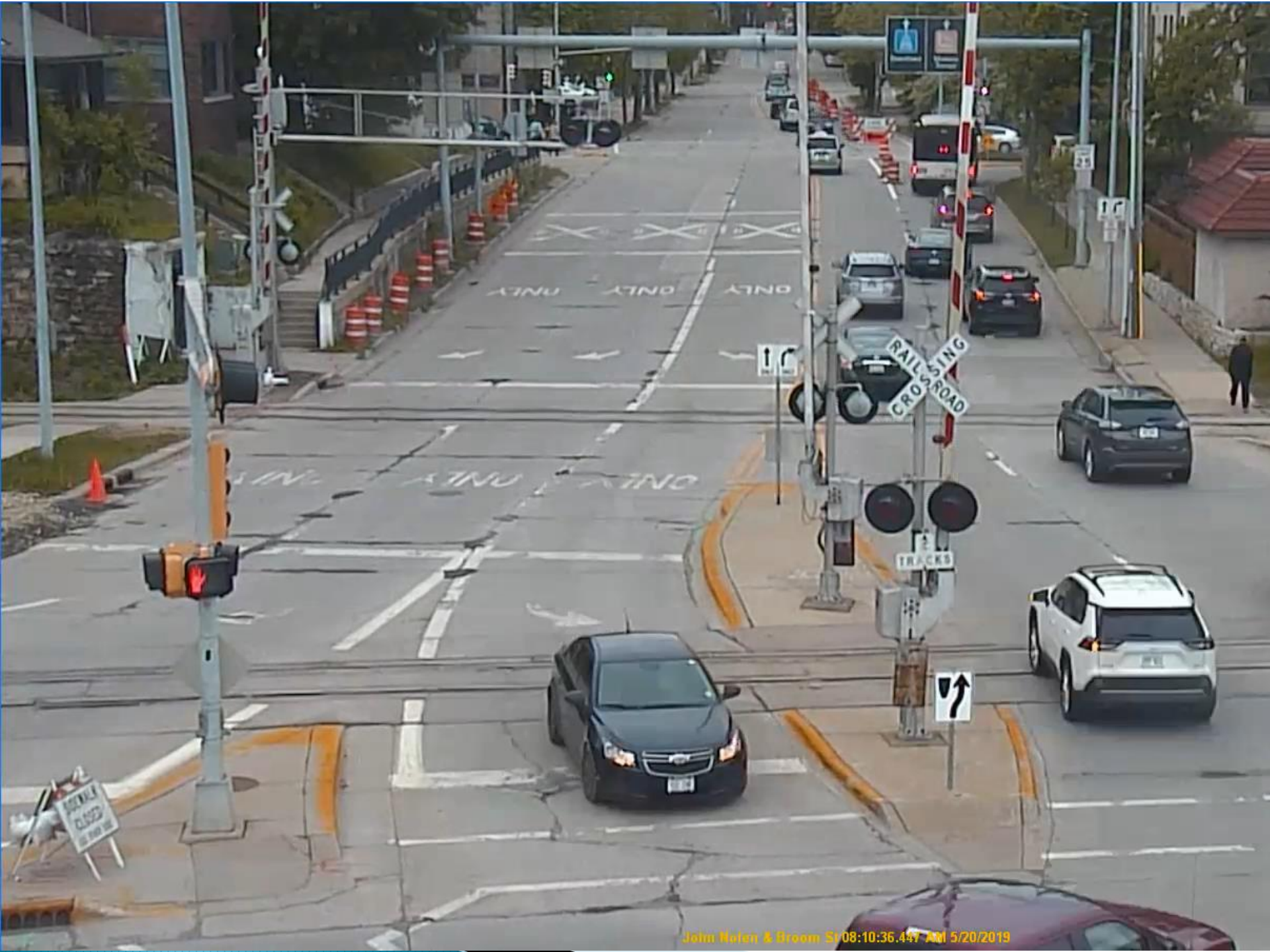
# Street Details

- ▶ Existing Street: S. Broom St.
  - Concrete pavement rated 6 out of 10; curb 8 of 10
  - Closer inspection shows joint failures
  - 3–5 travel lanes, no bike facility or connection to path



# Corridor Study & Test

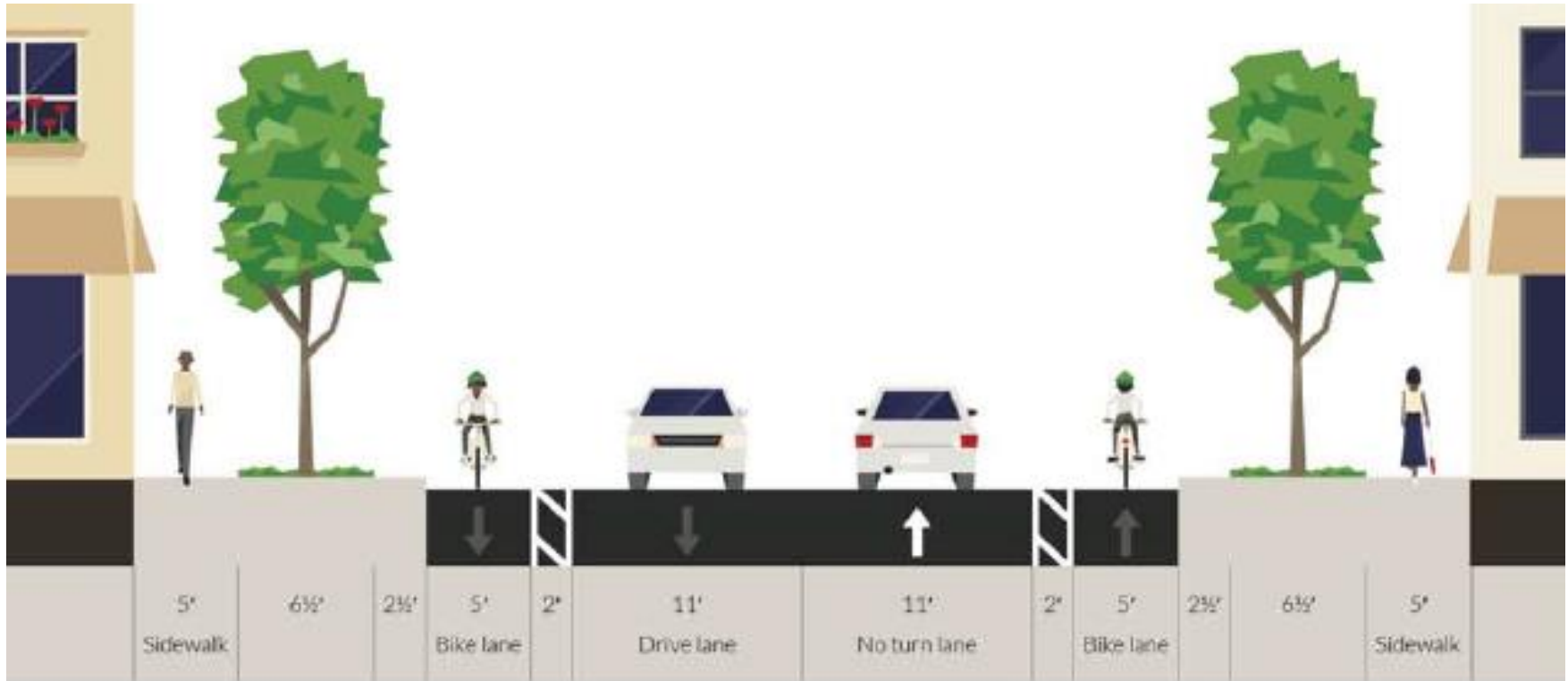
- ▶ City Dept. of Transportation has been conducting a corridor study of Wilson St.
  - Not complete, but interim recommendations for 300 block
- ▶ Include some proposed improvements to Broom
- ▶ Test of lane reductions on Broom & Wilson
  - Started early May
  - Observations show proposed changes are acceptable for traffic flow



# Proposed Street Work – Wilson

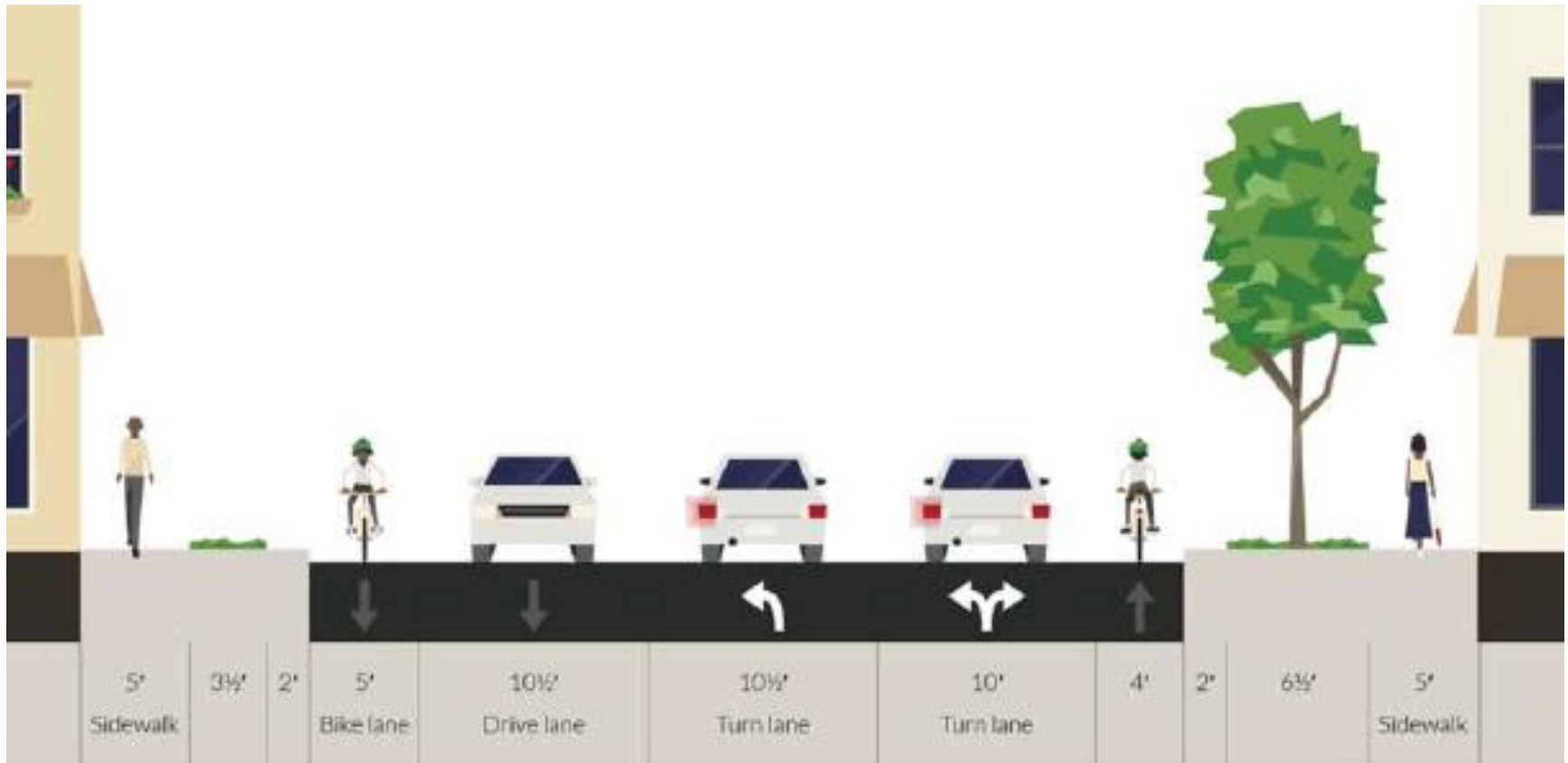
- ▶ Remove existing asphalt pavement & install new asphalt pavement
- ▶ Replace curb & sidewalk as needed
  - Sidewalk drainage issues
- ▶ Install bike lanes in both directions
  - Remove a travel lane for a portion of block
  - Widen near Hamilton to develop 2<sup>nd</sup> travel lane
  - Buffered bike lanes on most of block
- ▶ Replace street lighting & install new pedestrian scale lighting

# Wilson St. (Broom to mid-block)





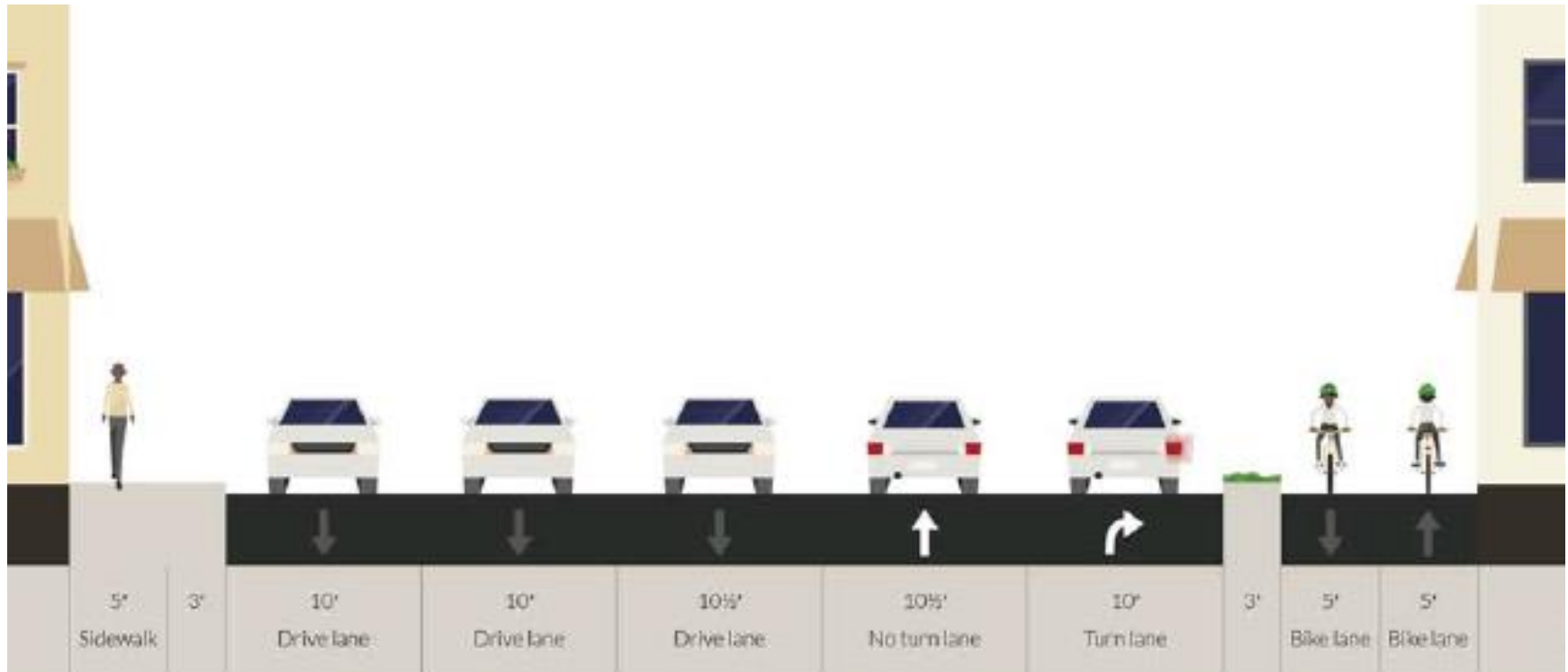
# Wilson St. (mid-block to Hamilton)



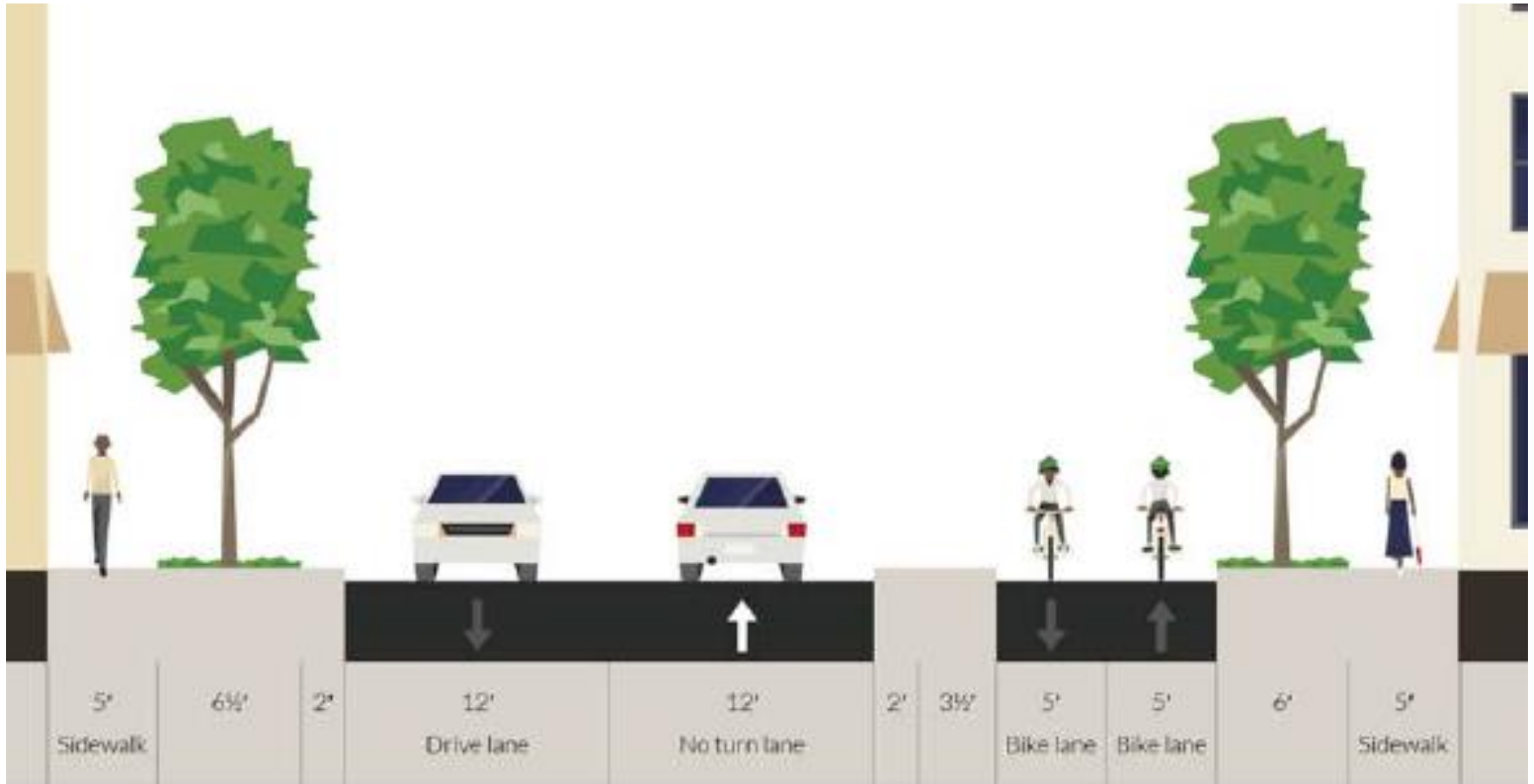
# Proposed Street Work – Broom St.

- ▶ Remove concrete pavement & curb, and install new curb and asphalt pavement
- ▶ Install shared use path between John Nolen & Wilson, with raised crossing at Wilson
  - Narrow 5 travel lanes, right-turn only at Wilson
  - Remove smaller trees, save larger trees
- ▶ Buffered, 2-way cycle track from Wilson to Main
  - Remove a travel lane between Doty & Main
  - Remove parking between Doty & Main, including a couple of spots on Doty St.
- ▶ Replace street lighting & install new pedestrian scale lighting

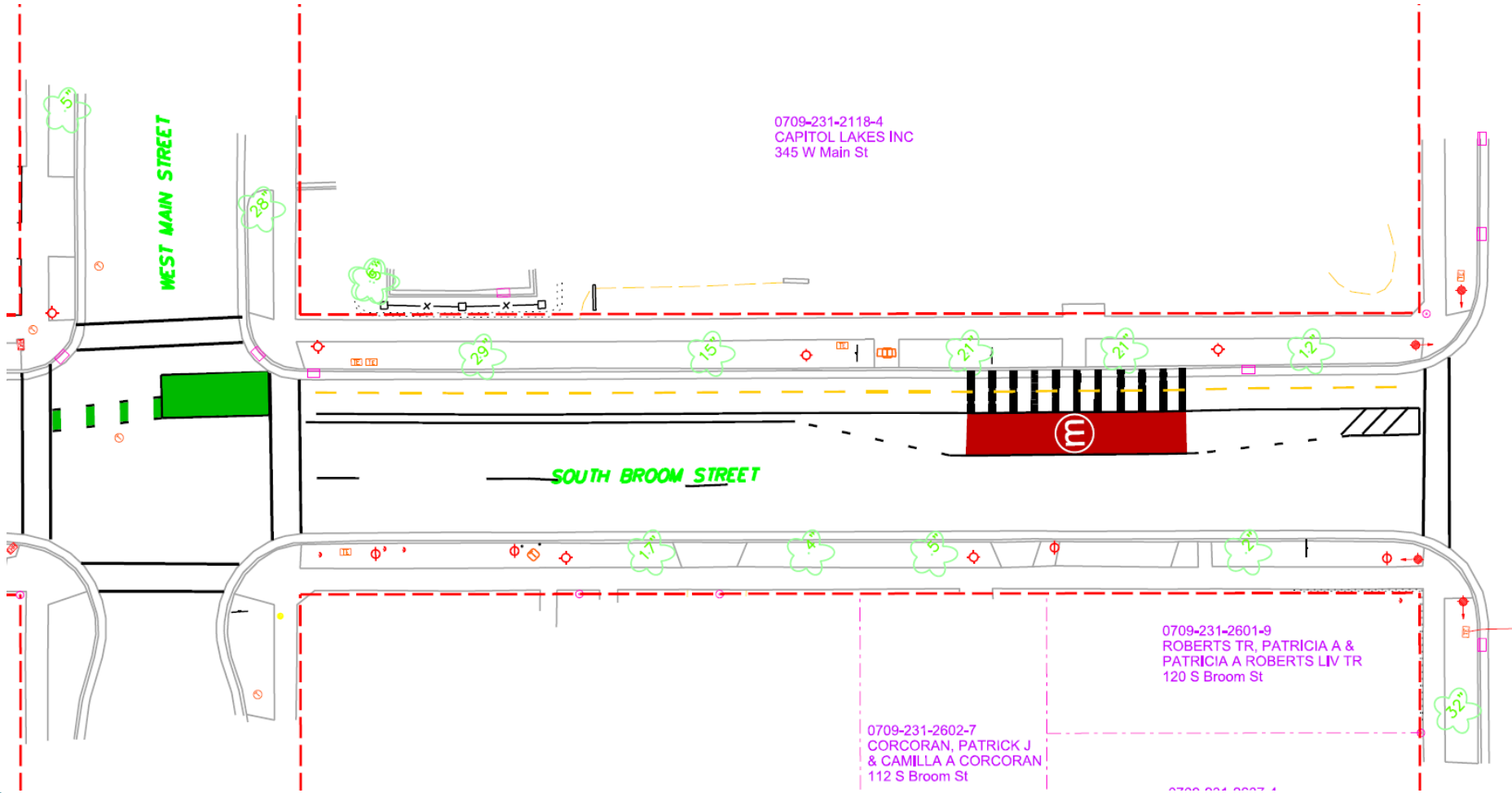
# Broom St. (John Nolen to Wilson)



# Broom St. (Wilson to Doty)



# Broom St. (Doty to Main)



# Proposed Street Plan

- ▶ 2019 project plan

# Construction Schedule & Impacts

- ▶ Anticipated Schedule: Fall 2019, Spring 2020
  - W. Wilson St. potentially start in September
  - S. Broom St. likely spring 2020
  - Contractor option for all work to be done in 2020
- ▶ W. Wilson work will take approx. 2-1/2 months
- ▶ S. Broom St. work will take approx. 3 months
  - Some construction work could overlap
- ▶ During construction, work hours will be limited to 7AM to 7PM
- ▶ Water main construction will result in 2 water shut-offs to each property, on average
  - Potential for breaks during construction

# Construction Traffic Impacts

- ▶ Wilson St. will likely be closed to through traffic during construction
- ▶ Maintain 1 in lane in both directions on Broom St., when possible
  - May need to reduce to one-way between Doty & Wilson, which would need to be coordinated with closure on Wilson
- ▶ Maintain pedestrian access on 1 side
- ▶ Driveway access for most of project
  - Residential (< 5 stalls) may be closed up to 20 days
  - Commercial driveways (> 5 stalls) will be kept open, except when working immediately at the driveway



# Assessment Policy & Costs

| Item                       | Property Owner Share | City Share |
|----------------------------|----------------------|------------|
| Curb and Gutter            | 50%                  | 50%        |
| Pavement                   | 0%                   | 100%       |
| Replace Sidewalk/Apron     | 50%                  | 50%        |
| Cycle tracks (Broom)       | 0%                   | 100%       |
| Storm Sewer                | 0%                   | 100%       |
| Private Storm Connects     | 100%                 | 0%         |
| Sanitary Sewer Main        | 0%                   | 100%       |
| Sanitary Sewer Laterals    | 25%                  | 75%        |
| Water main & services      | 0%                   | 100%       |
| Pedestrian & Street Lights | 100%                 | 0%         |

# Assessment Policy & Costs

- ▶ Assessments were mailed 5/10
- ▶ Final assessments will be mailed in the summer following the project completion, likely 2021
- ▶ Final assessments will be calculated based on bid prices and measured quantities
- ▶ Assessments can be paid in lump sum or over 8 years with 4% interest

# Anticipated Project Timeline

- ▶ BPW Public Hearing 5/22/2019
- ▶ Mailing with public hearing notice 5/24/19
- ▶ CC Hearing 6/4/19
- ▶ Advertise for Bids 7/25/19
- ▶ Possible construction start 9/16/19

# Project Contacts

- ▶ Project Engineer: Jim Wolfe, 266-4099, [jwolfe@cityofmadison.com](mailto:jwolfe@cityofmadison.com)
- ▶ Storm & Sanitary Sewer: Kyle Frank, 266-4098, [kfrank@cityofmadison.com](mailto:kfrank@cityofmadison.com)
- ▶ Traffic, Signals & Lighting: Gretchen Aviles, 266-4899, [gavilespineiro@cityofmadison.com](mailto:gavilespineiro@cityofmadison.com)
- ▶ Water: Pete Holmgren, 261-5580, [pholmgren@madisonwater.org](mailto:pholmgren@madisonwater.org)

# Discussion