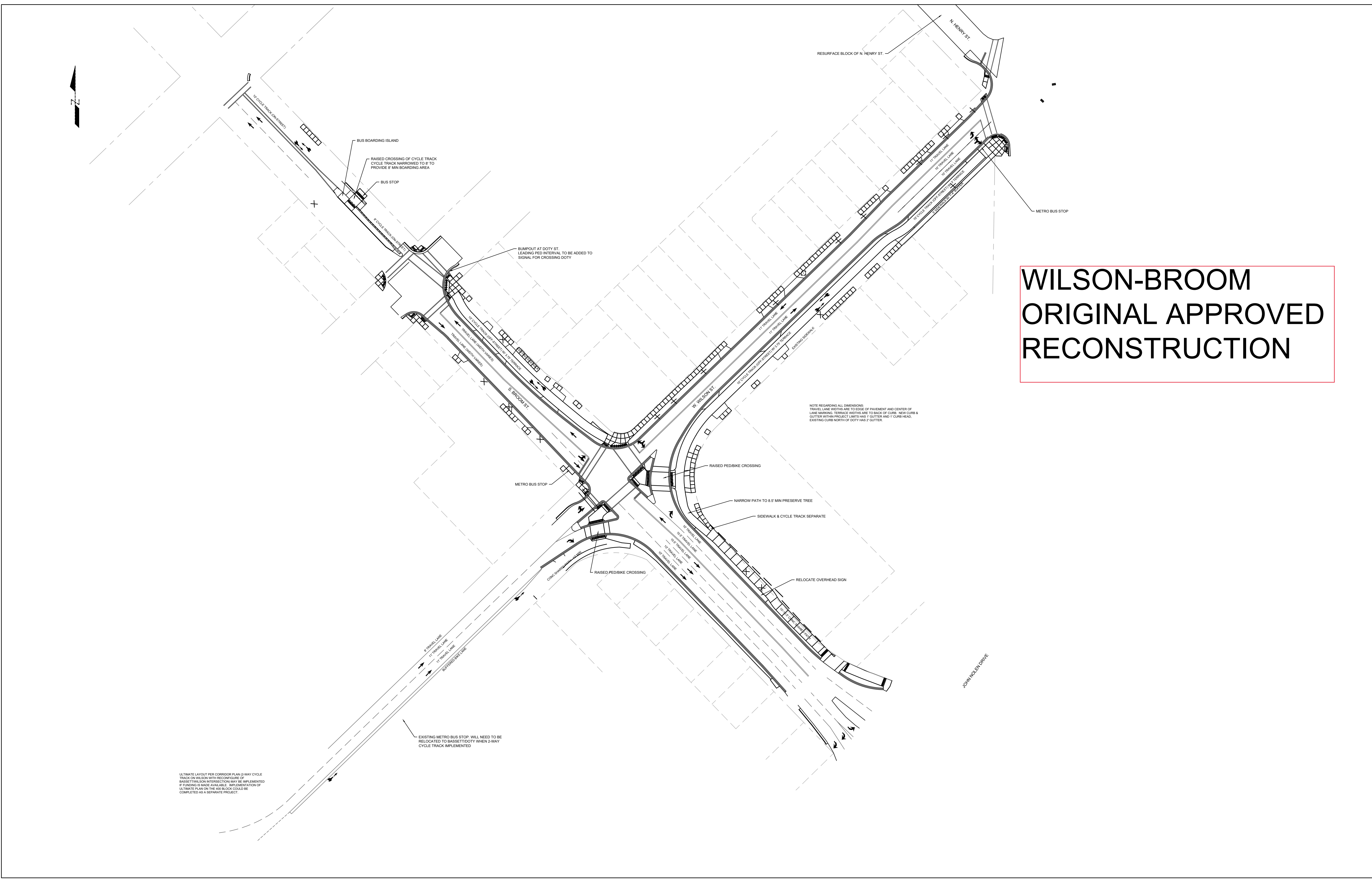


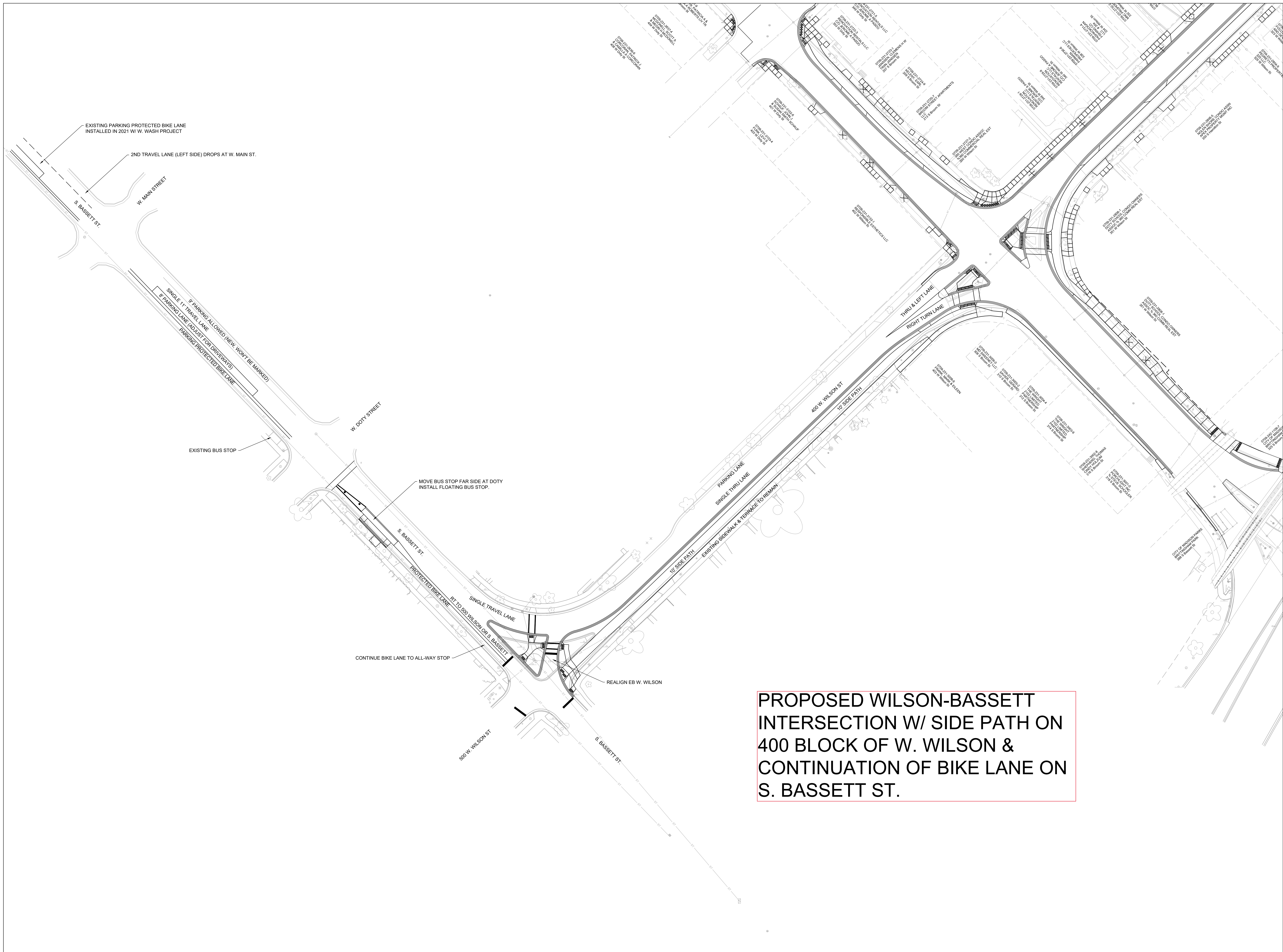
WILSON-BROOM ORIGINAL APPROVED RECONSTRUCTION

ULTIMATE LAYOUT PER CORRIDOR PLAN (2-WAY CYCLE TRACK ON WILSON WITH RECONFIGURE OF BASSETT/WILSON INTERSECTION) MAY BE IMPLEMENTED IF FUNDING IS MADE AVAILABLE. IMPLEMENTATION OF ULTIMATE PLAN ON THE 400 BLOCK COULD BE COMPLETED AS A SEPARATE PROJECT.

EXISTING METRO BUS STOP WILL NEED TO BE RELOCATED TO BASSETT/DOTY WHEN 2-WAY CYCLE TRACK IMPLEMENTED

NOTE REGARDING ALL DIMENSIONS: TRAVEL LANE WIDTHS ARE TO EDGE OF PAVEMENT AND CENTER OF LANE MARKING. TERRACE WIDTHS ARE TO BACK OF CURB. NEW CURB & GUTTER WITHIN PROJECT LIMITS HAS 1' GUTTER AND 1' CURB HEAD. EXISTING CURB NORTH OF DOTY HAS 2' GUTTER.





**PROPOSED WILSON-BASSETT
INTERSECTION W/ SIDE PATH ON
400 BLOCK OF W. WILSON &
CONTINUATION OF BIKE LANE ON
S. BASSETT ST.**

