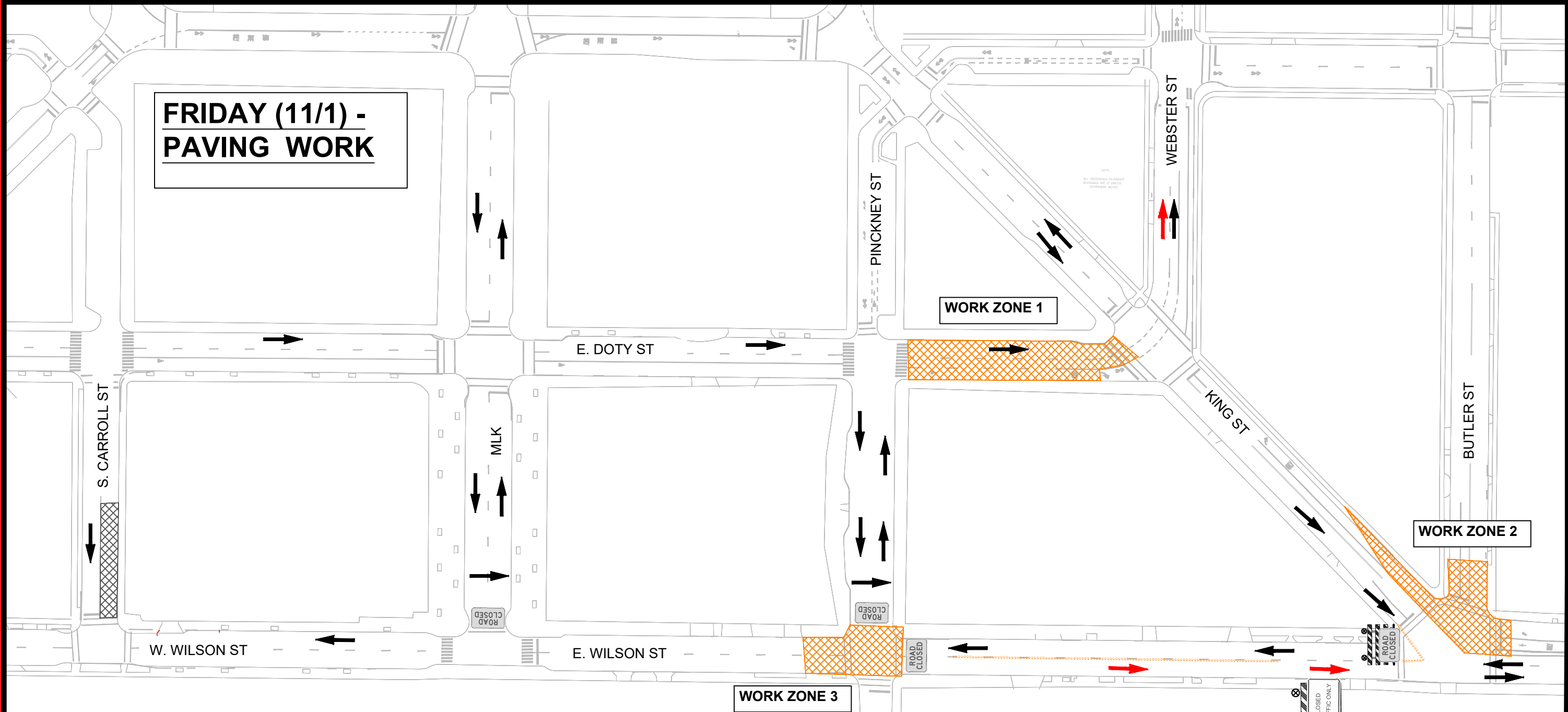


FRIDAY (11/1) - PAVING WORK



WILSON & DOTY ST PAVING - FRIDAY 11/1

- WORK ZONE 1 (DOTY ST FROM PINCKNEY TO KING):
 - 7AM TO 9AM
 - FINAL PAVING SURFACE ON DOTY ST.
 - ONE EASTBOUND LANE TO BE MAINTAINED AT ALL TIMES.
- WORK ZONE 2 (WILSON ST AND BUTLER ST INTERSECTION):
 - 9AM TO 11:30AM
 - BINDER COURSE PAVING WITHIN BUTLER/KING/WILSON INTERSECTION
 - ALL WORK TO TAKE PLACE IN ALREADY CLOSED OFF PORTION OF ROAD
- WORK ZONE 3 (WILSON ST AND PINCKNEY ST INTERSECTION):
 - 11:30AM TO 4PM
 - FINAL PAVING SURFACE WITHIN WILSON ST AND PINCKNEY ST INTERSECTION.
 - CLOSURE TO START AT 11:30AM. WORK IS EXPECTED TO BE COMPLETED BY 4:00PM ON 11/1.
 - WESTBOUND TRAFFIC TO BE DETOURED USING KING ST TO WEBSTER ST TO MIFFLIN ST TO FAIRCHILD ST TO DOTY ST TO MARTIN LUTHER KING JR BLVD.

LEGEND:

- TEMPORARY DETOUR ROUTE
- TRAFFIC FLOW
- LANE/ROAD CLOSED

MARK	REVISION	DATE	BY
11543	11543	10/30/2024 9:52 AM	Custom
11543		TC - 1	
11543		MADISON, WI	
11543		CONTRACT NO: 8735	
11543		TRAFFIC CONTROL - WILSON ST PAVING- SATURDAY	
11543		DOTY & WILSON - RECONSTRUCTION	
11543		M:\DESIGN\Projects\11543\CAD\Traffic\11543TE-Traffic Control - Paving Saturday 10-19.dwg	
11543		CITY OF MADISON WISCONSIN	
11543		11543	
11543		TC - 2	