



**MADISON
PARKS**

Mall Concourse Maintenance Support

Dedicated to Service Excellence

The Team



Support At A Glance

Services:

- Snow removal
- Trash and recycling pickup
- Debris clean up
- Sidewalk sweeping
- Seasonal banner installation
- Abandoned item pickup
- Fountains
- Food cart and special event service

Maintenance:

- Bus stops/shelters
- Landscape planting for planting beds
- Park visitor center and grounds
- Sidewalk power washing
- Turf
- Hardscapes
- Flower planter seasonal changes

Support Overview

Snow is removed from the service area, including sidewalk area and bus shelters

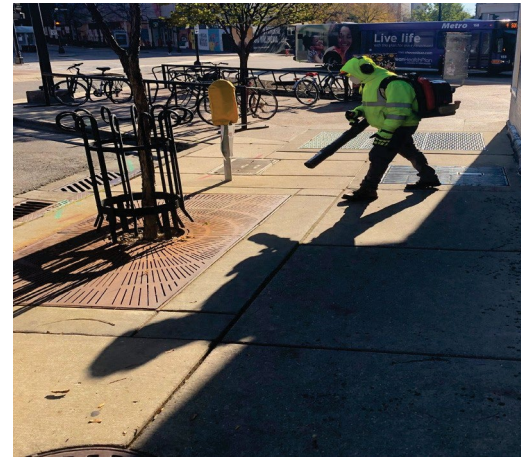


Daily trash and recycling pickup, including trash removal from sidewalk areas

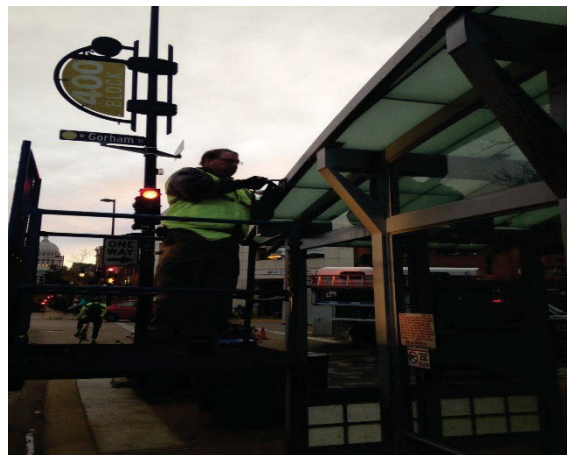


Support Overview

Sweeping sidewalks, including leaf collection



Cleaning and maintenance of Bus stops/shelters



Support Overview

Turf maintenance

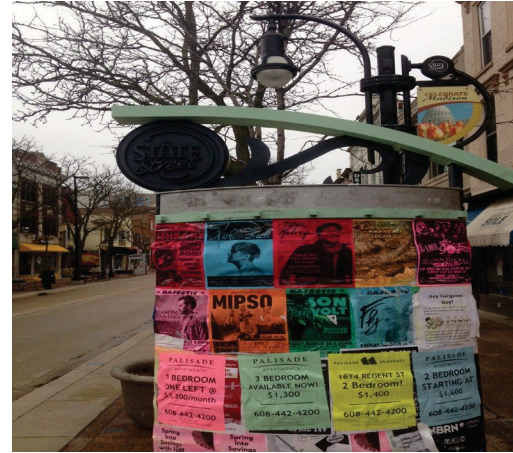


Flower planter seasonal change-out/maintenance



Support Overview

Seasonal banner change-out on State Street and Capitol Square



Hardscape Maintenance



Support Overview

Landscape planting and maintenance program for area planting beds

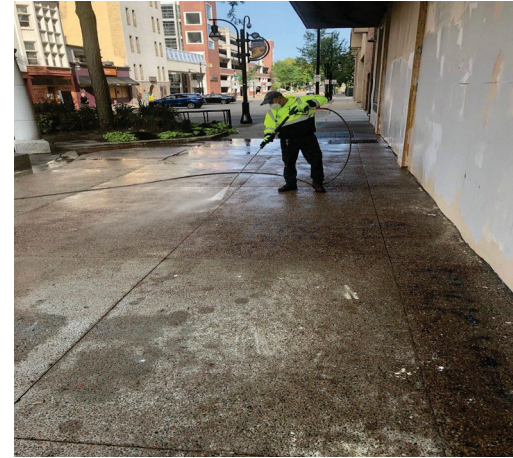


Maintenance and cleaning of the Peace Park visitor center and grounds



Support Overview

Sidewalk washing program



Kiosk Maintenance



Fountain Maintenance



Support Overview

Remove abandoned items



Food cart and special event services



A Committed to Service Excellence



Operations Contacts

For questions or issues related to services provided, please contact:

- ▶ **Mark Kiesow**, Mall Concourse Supervisor
(608) 266-6031 or mkiesow@cityofmadison.com
- ▶ **Chad Hughes**, Parks Operations Manager
(608) 267-8804 or cmhughes@cityofmadison.com
- ▶ **CJ Ryan**, Parks Assistant Superintendent
(608) 266-4714 or cryan@cityofmadison.com

Administrative Contact

For questions regarding billing please contact:

- ▶ **Jennifer Stoiber**, Finance & Administrative Manager
(608) 266-4214 or jstoiber@cityofmadison.com

Thank you for allowing us to be of service to you!