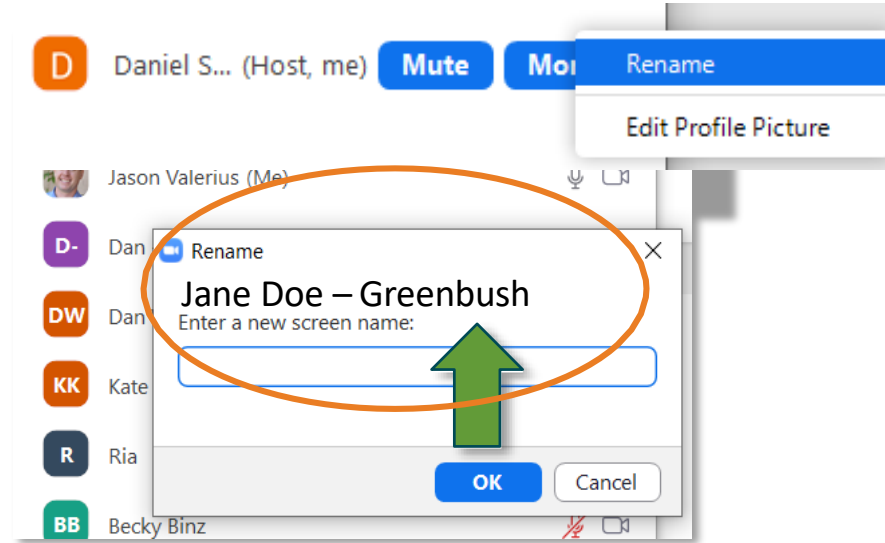


# WHILE YOU ARE WAITING FOR THE MEETING TO START

- Check to see your name is correct.
  - The name must match the name you used to register for this meeting.
  - You can edit it if needed



## Meeting Logistics

- All participants will be muted during the presentation and unmuted for the discussion sessions.
- Please use the “Raise Hand” button if you have a question. We will take questions during discussion sessions.
- This meeting will be recorded and available online to view later.



# disclaimer

- **This meeting is being recorded.**
- **It is a public record subject to disclosure.**
- By continuing to be in the meeting, you are consenting to being recorded and consenting to this record being released to public record requestors.

# Introduction

- Corey Stelljes; P.E. - City of Madison Parks Division Project Engineer
- Ann Freiwald, P.L.A -City of Madison Parks Division Planning and Development Manager



# Welcome

- Thanks for coming, we're looking forward to talking about Burrows Park. We want to hear your thoughts and ideas, so to make sure everyone has an equal chance to speak...
- - We address all comments/questions during discussion periods and at the end of the presentation.
- - No disparaging remarks about others' comments or City Staff.
- - If you are not comfortable speaking tonight, please call or email

Burrows Park -  
Pavement  
Reconstruction 2024

---

*play*  
**MADISON  
PARKS**



# Meeting Agenda

- Welcome and Introductions
- Project Background
- Project Details and Options
- Timeline
- Online Survey Analysis
- FAQ's
- Questions and Answers
- Next Steps

# Burrows Park History and Ammenities

- Established 1909
- Designated a City of Madison landmark on May 19, 1975, and is on the National Register of Historic Places
- Area= 10.56 acres
- Amenities
  - Parking Lot
    - Approx 41 stalls
  - Lake Shore access
  - Sailing storage and access
  - Reservable historic shelter
  - Playground
  - “Bird” Effigy Mound
    - Built: ca. 700 - 1200 A.D.
  - Soccer/play fields
  - Traffic
    - Approx 50-75 cars/day (Source: Streetlight 2021)
    - Approx 70 reservations per year (Shelter and Fields)





# Project Background

- Annual system infrastructure needs evaluation and asset management
  - Madison Parks maintains approximately 90 parking lots and roadways
  - Approximately 30-40 year life before resurfacing
  - Lots budgeted for replacement each year based on need and budget
- Burrows asphalt in poor condition and drainage issues need fixed
  - Rated 3 (out of 10) on PASER scale
  - One of the 5-10 worst lots in Parks for condition
  - Reconstruction recommended
- Total site evaluation and design
  - Modern lot standards and rules mean required changes
    - Parking islands
    - Stormwater treatment
    - Turning radii
    - Signage
    - Tree protection
    - Burial grounds monitoring and protection



<b>3</b> <b>Poor</b>	Closely spaced longitudinal and transverse cracks often showing raveling and crack erosion. Severe block cracking. Some alligator cracking (less than 25% of surface). Patches in fair to poor condition. Moderate rutting or distortion (1" or 2" deep). Occasional potholes.
<b>2</b> <b>Very Poor</b>	Alligator cracking (over 25% of surface). Severe distortions (over 2" deep) Extensive patching in poor condition. Potholes.
<b>1</b> <b>Failed</b>	Severe distress with extensive loss of surface integrity.

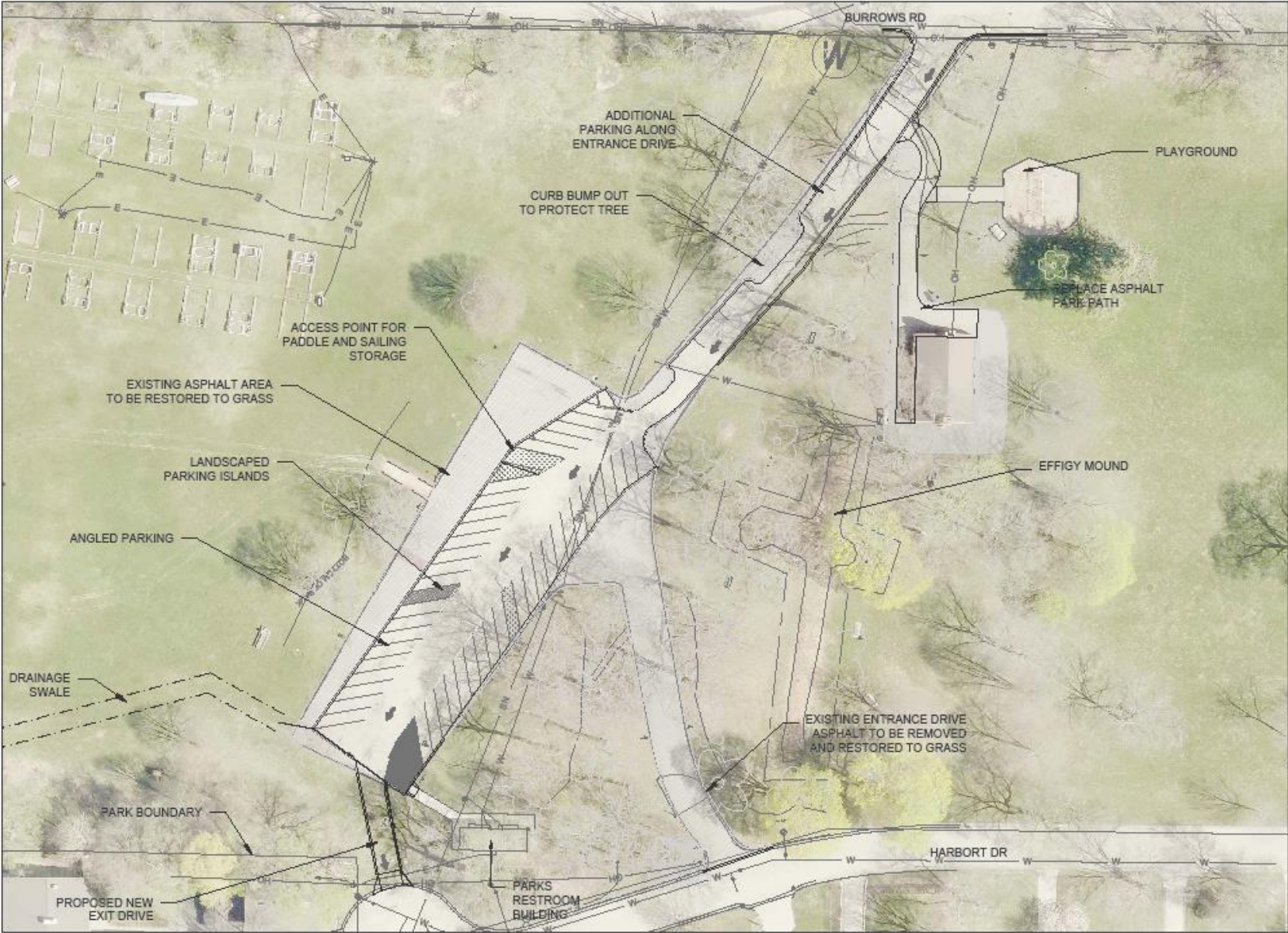


# Project Summary

- Reconstruct existing parking lot, roadways, and path to shelter
- Reconfigure roadways and traffic flow
  - One way in and out of park
  - 2 options for traffic flow
  - Take online survey for preferred direction
  - Additional storm sewer from end of Harbort Drive to Lake Mendota
- Reduce overall size of parking lot and roadway surfaces
- Preserve parking capacity
- Move south entrance/exit drive to west
  - Avoid effigy mound and tree impacts
- Change to angled parking stalls
- Preserve boat and sailing access



# Burrows- Counter Clockwise Traffic Flow



City of Madison  
 Department of Public Works  
**PARKS DIVISION**  
 City-County Building, Suite 104  
 210 Martin Luther King, Jr. Blvd.  
 Madison, WI 53703

**play  
 MADISON  
 PARKS**

Graphical Scale  
 0 50 N

PROJECT:  
**BURROWS PARK  
 LOT RECONSTRUCTION  
 2024**

PROJECT ADDRESS:  
**BURROWS PARK  
 25 BURROWS RD  
 MADISON, WI 53704**

Although every effort has been made to guarantee that these plans and drawings are correct, the contractor and subcontractors are deemed to be responsible for the accuracy and completeness of the work and to be responsible for the same.

ITEM	DATE
ADVERTISED	TBD

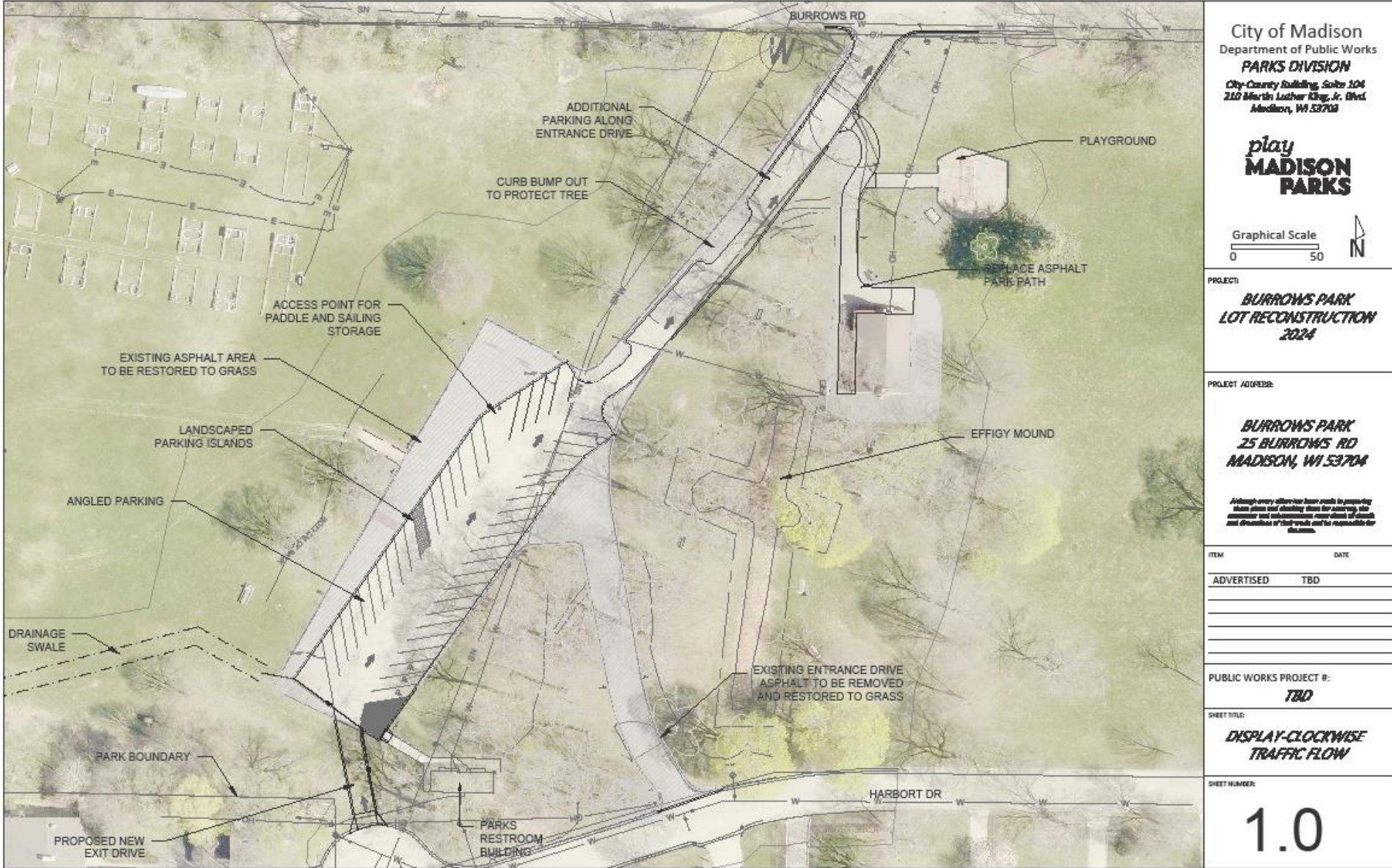
PUBLIC WORKS PROJECT #:  
**TBD**

SHEET TITLE:  
**DISPLAY-COUNTER  
 CLOCKWISE TRAFFIC FLOW**

SHEET NUMBER:  
**1.0**

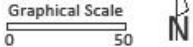


# Burrows- Clockwise Traffic Flow



City of Madison  
 Department of Public Works  
**PARKS DIVISION**  
 City-County Building, Suite 204  
 210 Martin Luther King, Jr. Blvd.  
 Madison, WI 53703

*play*  
**MADISON  
 PARKS**



PROJECT:  
**BURROWS PARK  
 LOT RECONSTRUCTION  
 2024**

PROJECT ADDRESS:  
**BURROWS PARK  
 25 BURROWS RD  
 MADISON, WI 53704**

Although every effort has been made in preparing these plans and drawings, there can be no warranty, express or implied, for the accuracy, completeness or appropriateness of the same, and the contractor shall be responsible for the same.

ITEM	DATE
ADVERTISED	TBD

PUBLIC WORKS PROJECT #:  
**TBD**

SHEET TITLE:  
**DISPLAY-CLOCKWISE  
 TRAFFIC FLOW**

SHEET NUMBER:  
**1.0**

# Project Goals and Benefits



- **Help protect our lakes through stormwater management**
  - High water table on site makes management by infiltration difficult
  - Reducing the impervious area (asphalt) in the park by 44% or 16,000 square feet
  - Reducing asphalt results in fewer pollutants and runoff
- **Maximize our Park Greenspace**
  - Change in traffic pattern and angled parking
  - Increasing the number of parking stalls from 41 to 51 while decreasing asphalt area
  - Planted parking islands reduce heat, provide shade, and increase bio diversity
- **Protect our urban forest by minimizing tree impacts**
  - Narrowing and relocation of park drives
  - Hand work around trees
  - City's No Root Cut policy
- **Respect and protect the effigy mound**
  - Disturbance to mound area minimized
  - Restored to grass
  - Guidance from City Landmarks Commission and WI State Historical Society
- **Preserve access for park users**
  - Number of parking stalls remain the same or slightly increased
  - Wheelchair accessible stalls added or restored to usable condition
  - Access to sailing storage preserved

# Timeline- Burrows Park Reconstruction

2020-2022	Asset management and rating identified project
2023	Project Budget and Preliminary Planning
2024	Public Engagement
Fall 2024	Project design, permitting, and bidding
2025	Construction
2026	Final Plantings and Establishment





## Online Survey Analysis

- June 1<sup>st</sup>- June 20<sup>th</sup>
- Survey open through July 1<sup>st</sup>
  - Final results will be posted on project webpage
  - Public feedback tool- for information only

## FAQ's

- **Will this affect my reservation?**
  - 2025 construction dates determined
  - Reservation times blocked out
- **Why is traffic flow being changed to one way in/out of park?**
  - Most efficient design
  - Allows for most parking and usage with least asphalt area
  - Narrowing of each roadway to one lane minimized tree impacts
- **What is being done about the water ponding in the lot and park?**
  - New inlets in lot and at Harbort Dr entrance/exit
  - New storm sewer pipe to lake
  - Lot grading to address ponding on pavement
- **Will there be bio retention basins, ponds, or permeable pavement installed?**
  - Probably not
  - Water table is very high at this location
  - Infiltration very difficult to achieve in these circumstances
  - Decrease in pollutant load driven by reduction of asphalt area
  - Stormwater treated to MEP (Maximum Extent Practicable)

- **What about the City budget and cost?**
  - Project budget to be determined after public engagement complete and scope determined
  - Maximum allocated budget about is \$700k
  - Capital vs Operational City of Madison Budget (Wisconsin State Statute)
  - Project does not impact projected 2025 operational shortfall
- **Has a traffic study been done?**
  - Overall volume of traffic (streetlight and reservation data)
  - Traffic flow, turning, parking, roadway dimensions etc (Reviewed by City Traffic Engineering)
  - Burrows Rd and Harbort Dr are Village of Maple Bluff
- **The intersection at Warner Dr and N Sherman Ave doesn't function well. Can anything be done to address this?**
  - Parks and Madison Traffic Engineering are currently discussing options to improve this
  - Possible future project
- **What are the proposed accommodations for cyclists and pedestrians?**
  - Bikes and Pedestrians can use the park drive as proposed
  - Additional future bike path, sidewalk, and pedestrian improvements being discussed with future Warner Dr project
- **Next steps and additional public engagement?**
  - Project final design
  - City internal review
  - Madison Board of Public works (Date TBD)
    - Public Comment
  - Madison Common Council (Date TBD)
    - Public Comment
  - Dates to be posted on project website when known

# PUBLIC INPUT PERIOD

Please use the “raise hand” feature if you wish to provide comments



# NEXT STEPS

- Gathering public input
  - Be sure to contact us with comments
  - Madison Parks will analyze public input and site conditions
  - Final Design
  - Permitting
  - Bidding
  - Construction
  - Updates Posted to project webpage

Watch the City Parks “Project Portal” website for the Community Survey and project updates!  
<https://www.cityofmadison.com/parks/projects/burrows-park-pavement-reconstruction-2024>







- **Questions or comments**
- Email at [cstelljes@cityofmadison.com](mailto:cstelljes@cityofmadison.com)
- Take Online Survey Until July 1st
- Monitor Project Webpage for updates